

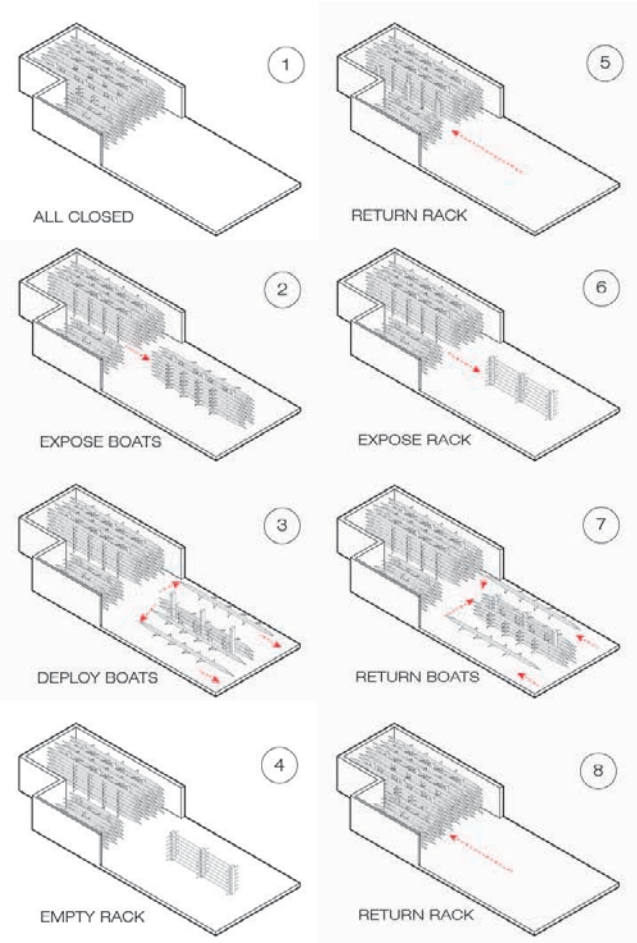
ICBDESIGN



# ARCHITECTURE CORE DESIGN







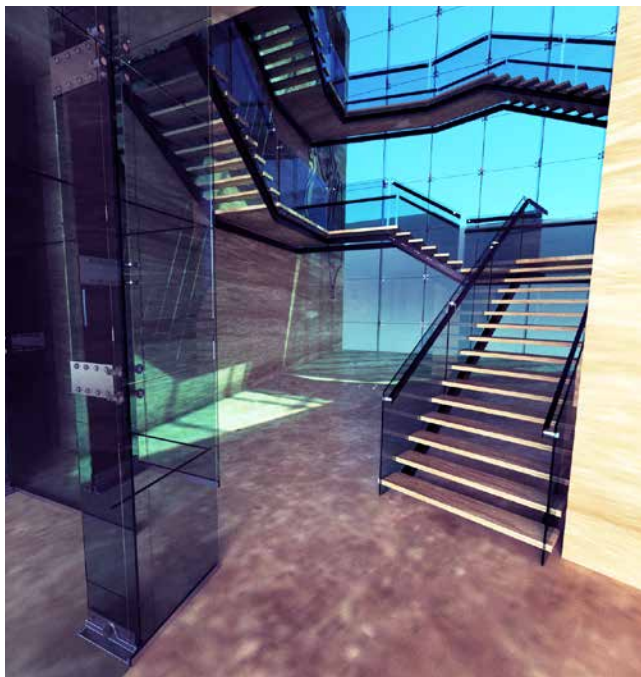
575 W 218<sup>TH</sup> STREET

ARCH 302 COLUMBIA UNIVERSITY BOATHOUSE

THE DESIGN PROPOSES A CONTEXTUAL RESPONSE TO CONFLICTING GOALS OF PRIVATIZATION AND PUBLIC INTEGRATION, A PREFORMATIVE SOCIAL ATRIUM ANCHORS THE BOATHOUSE ON THE SITE; PROVIDED BY THE INNOVATIVE BOAT STORAGE SYSTEM. CUTTING EDGE STRUCTURAL GLASS CONNECTIONS AND TENSION CABLE BEAMS ALLOW EXTREMELY LONG SPANS IN TRANSPARENT ELEMENTS IN THIS SPACE. COMPLEMENTED BY PASSIVE HOUSE RATED R40 INSULATED TRAVERTINE WALL CONSTRUCTION IN THE ATHLETIC TRAINING SPACES BALANCING THE ATRIUM'S THERMALLY NEGATIVE IMPACT DURING THE SUMMER.







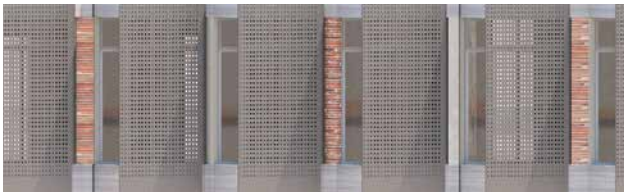
575 W 218<sup>TH</sup> STREET

ARCH 302 COLUMBIA UNIVERSITY BOATHOUSE

THE COLUMBIA SPORTS COMPLEX SITS AS AN ABNORMALITY IN THE NEIGHBOURHOOD OF INWOOD. COLUMBIA WISHES TO MAINTAIN PRIVACY UNDER THE GUISE OF SECURITY; WHILE A BUILDING SUCH AS A BOATHOUSE IS ONLY USED FOR A SHORT PERIOD OF TIME THROUGHOUT THE YEAR. BY EXPANDING THE GYM SERVICES, PUBLIC PROGRAMMING AND FINISHED OUTDOOR SPACE ALLOWS THE BUILDING TO BE PRODUCTIVE AND POSITIVE FOR BOTH THE COLLEGE AND THE NEIGHBOURHOOD.

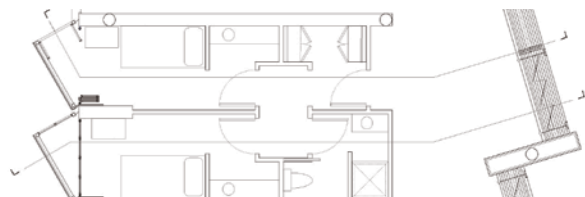
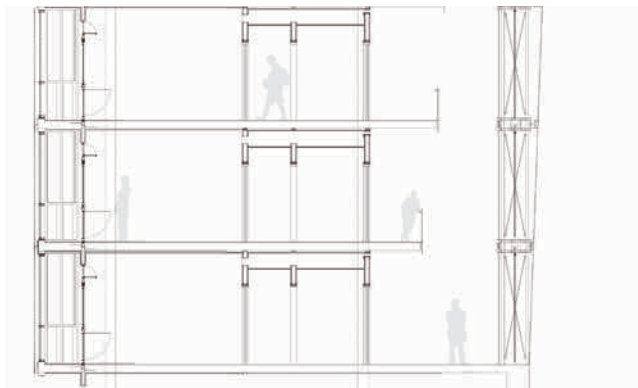
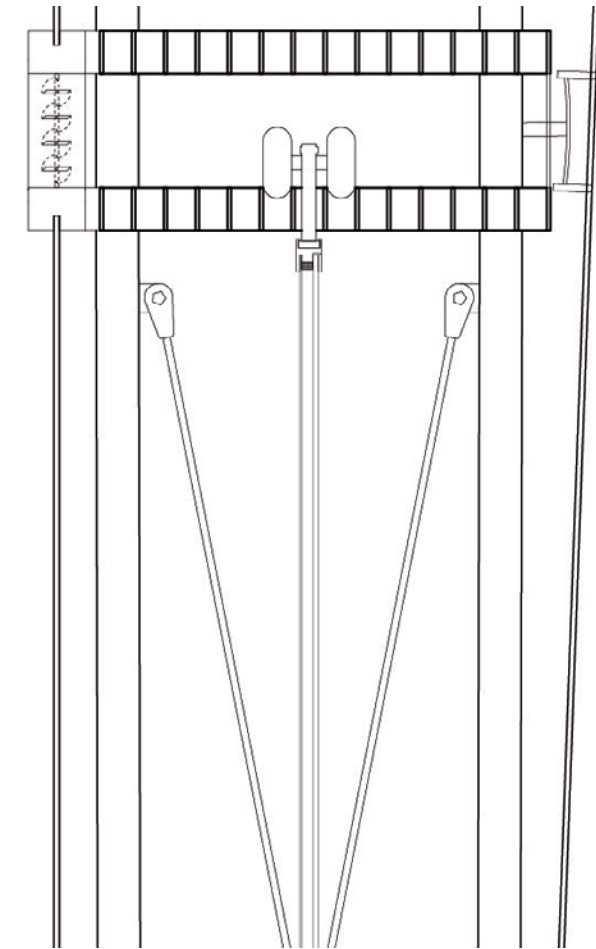






1 OLD FULTON STREET  
ARCH 301 DORMITORY  
AN AALTONIAN INSPIRED DORMITORY REACTS TO ENVIRONMENTAL PRESSURES OF CONSTRUCTION IN THE 21ST CENTURY. CONVERSELY PROVIDING MAXIMUM PRIVACY IN 170 SINGLE BED UNITS, WITH PRIVATE BALCONIES, ARRANGED IN NEIGHBORHOODS TO CREATE WELCOMING TRANSITIONAL PRIVACY FOR INCOMING FRESHMAN AT ST. FRANCIS UNIVERSITY.

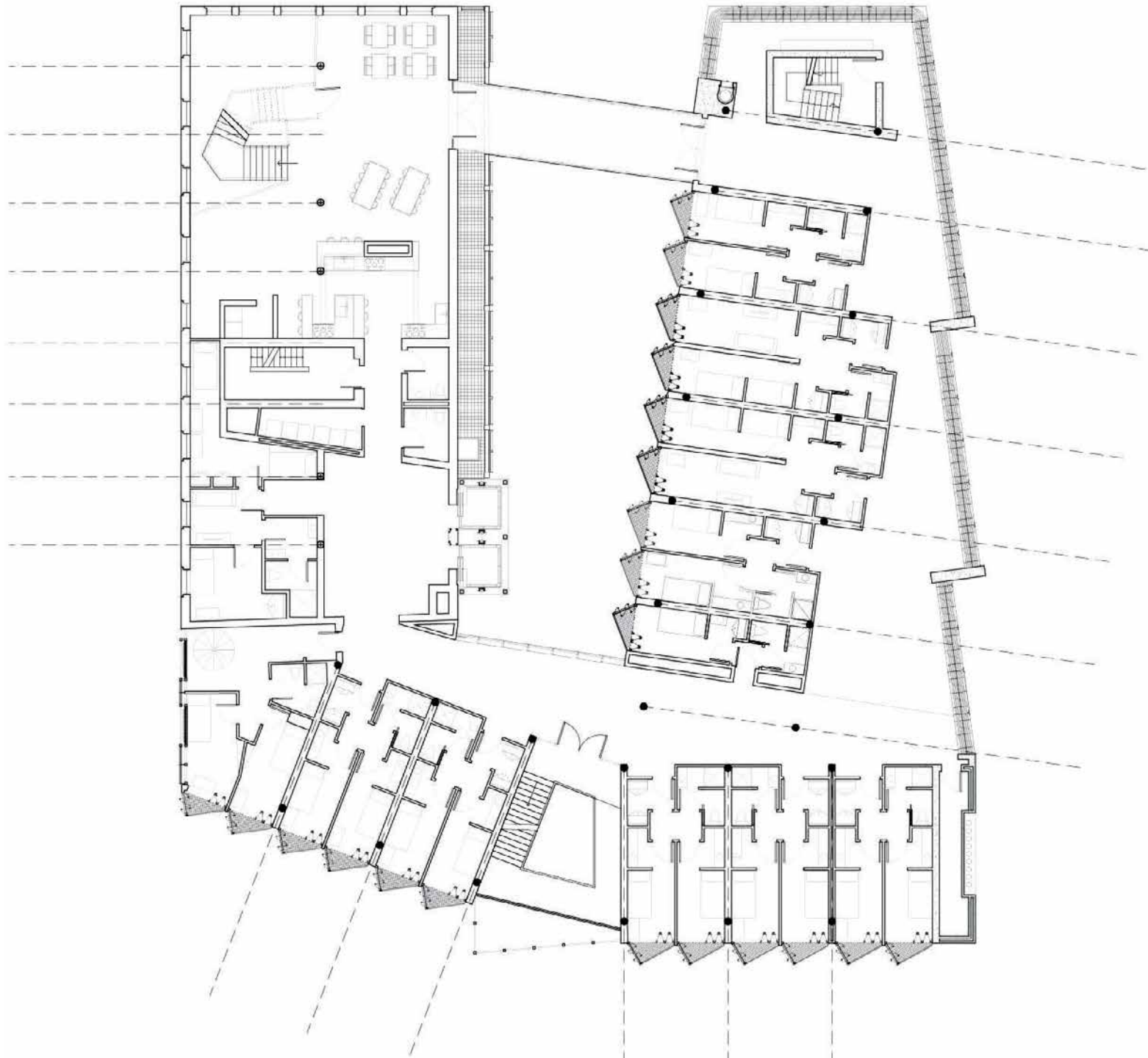




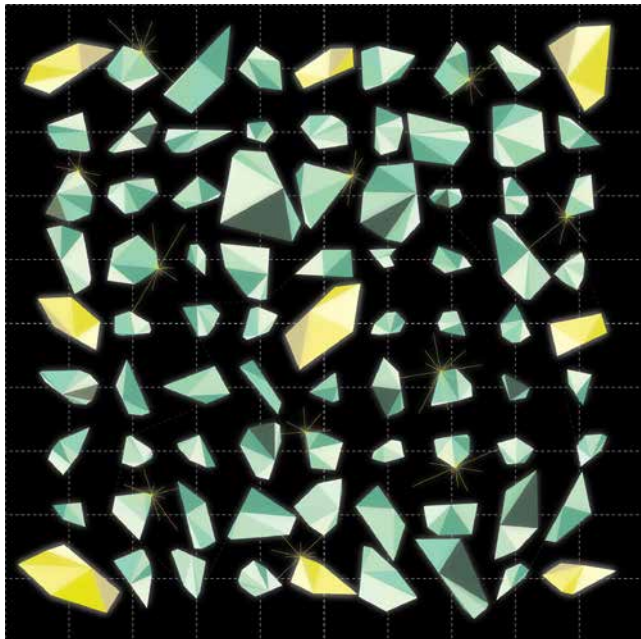
1 OLD FULTON STREET

ARCH 301 DORMITORY

THERMAL WALL ASSEMBLY AND SPACE PLANNING CREATES POSITIVE AIR PRESSURE THROUGH SOLAR HEAT GAIN. ALLOWING THE DORMITORY ROOMS TO HAVE A CONSTANT AIR FLOW. THE ADDITION TO THE EXISTING BUILDING ON THE SITE BECOMES GROUP PROGRAM SPACE ON EACH FLOOR; THE NEW CENTER OF SOCIAL INTERACTION FOR THE ENTIRE FLOOR. THE HALLWAYS ACT AS NEIGHBOURHOOD STREETS FOR SMALLER GROUP INTERACTIONS. THE FINAL LAYER OF PRIVACY IS THE ROOM ITSELF.







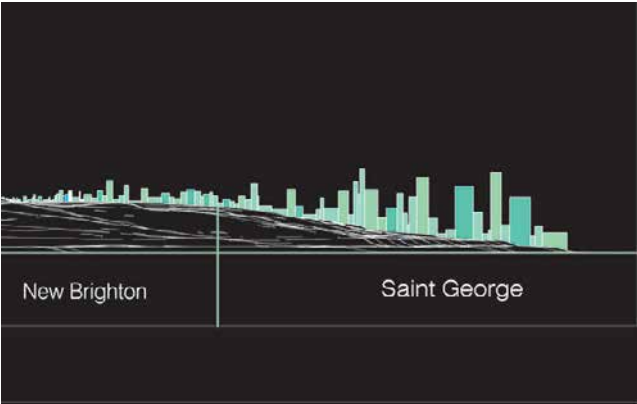
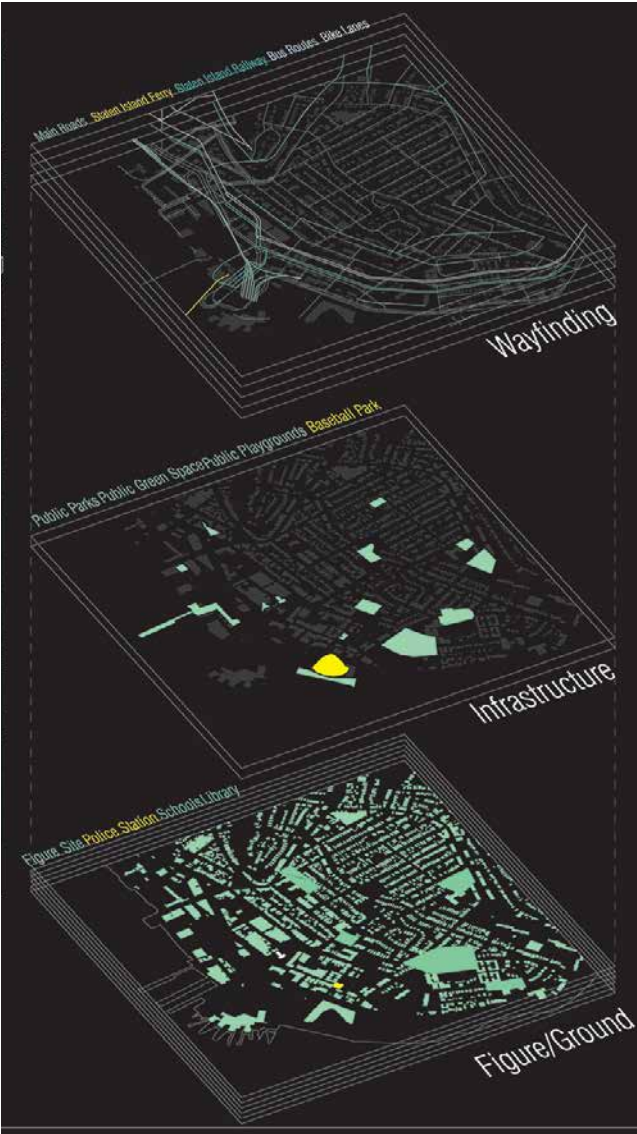
70 SAINT MARKS PLACE

ARCH 201 KINDERGARTEN

GEOGRAPHIC INFORMATION SYSTEMS (GIS) BECOMES THE FRAMEWORK FOR AN INFORMED SYSTEM ON THE STATEN ISLAND SITE. VORONOI PROCESSING OF PUBLIC GREEN SPACE ACROSS STATEN ISLAND INFORMS THE DESIGN AT MULTIPLE SCALES; CREATING A SPACE INGRAINED WITH NATURE AND NURTURE FOR THE CHILDREN OF ST. GEORGE NEIGHBORHOOD.



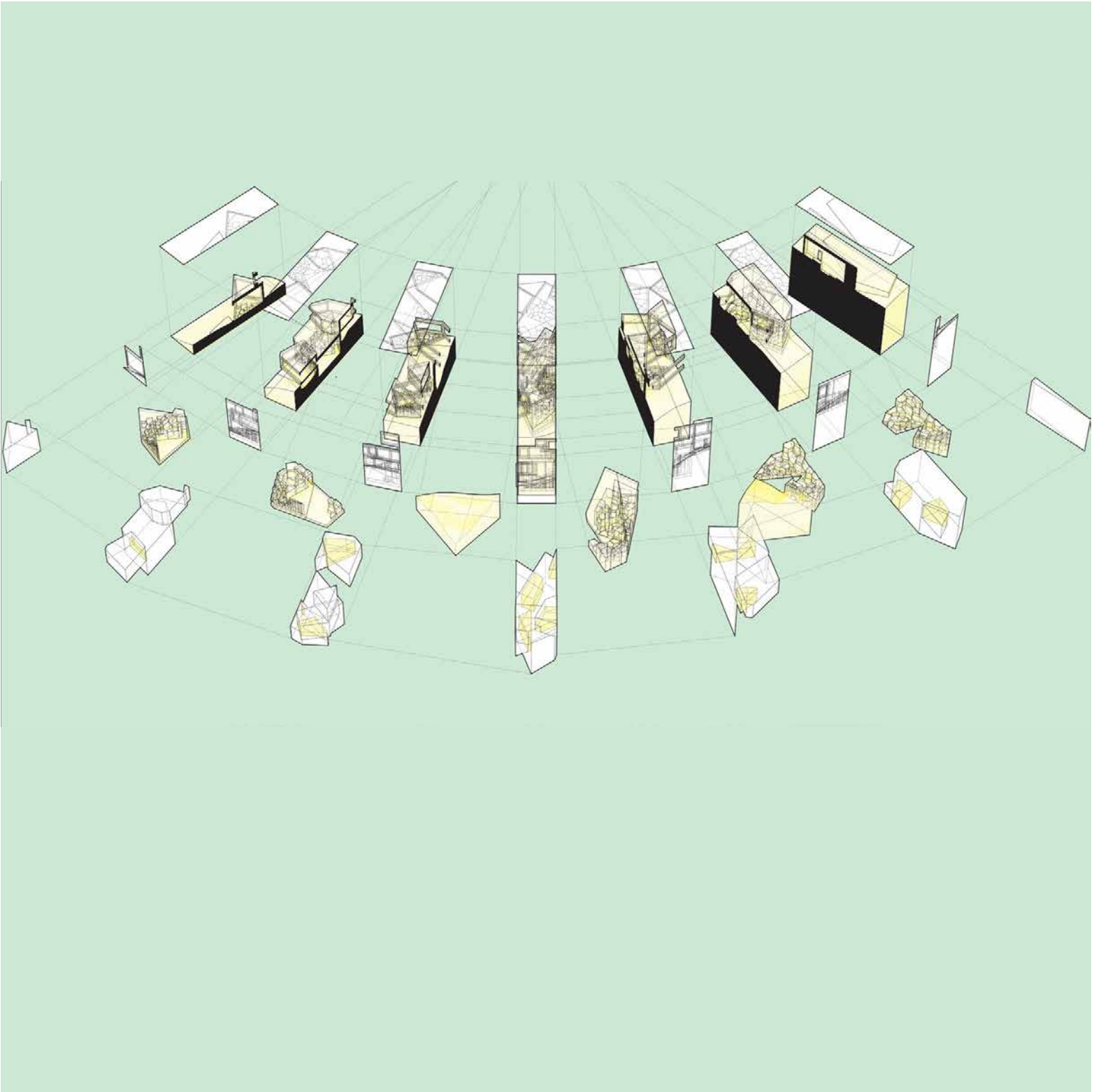




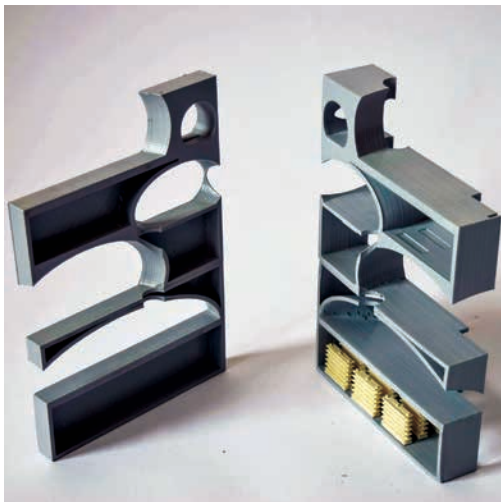
70 SAINT MARKS PLACE

ARCH 201 KINDERGARTEN

THE NURTURING ASPECT OF KINDERGARTENS IS THE MOST IMPORTANT PART OF CREATING A SAFE ENVIRONMENT FOR CHILDREN. STATEN ISLAND IS SO DIFFERENT FROM THE REST OF NEW YORK CITY. THE INTEGRATION AND DEVELOPMENT OF GREEN SPACES IN STATEN ISLAND WERE NURTURED THROUGH THE NEIGHBOURHOODS. THIS LOCAL LEVEL OF ENGAGEMENT BECOMES THE GOAL OF THE KINDERGARTEN.



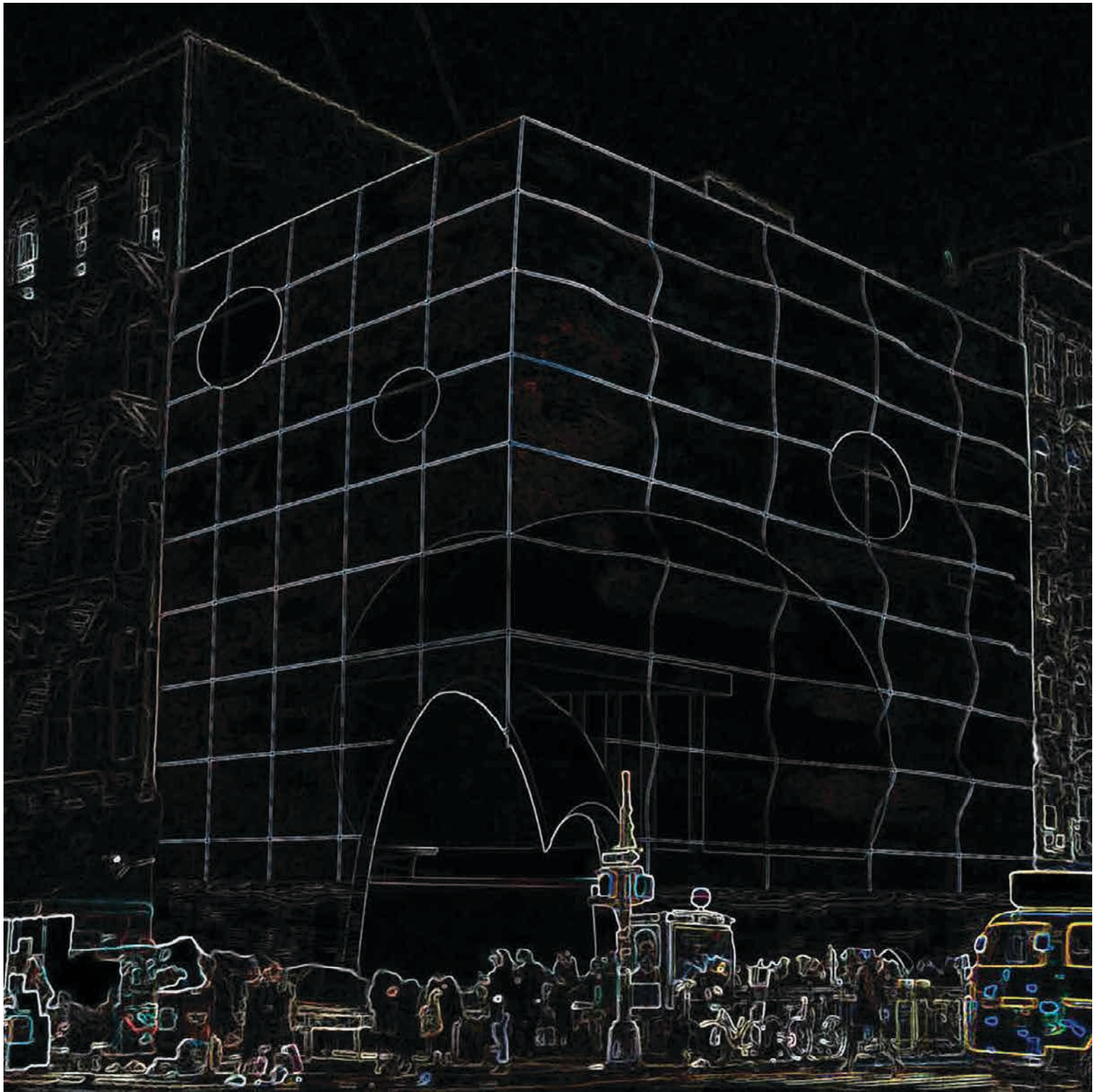




250 GRAND STREET

ARCH 202 LIBRARY

CONCRETE CASTING IN SCALE MODELS CREATED DIALOGUE FOR SPATIAL MANIPULATION. THIS ANALOGUE MODEL MAKING STRATEGY MANIFESTS INTO SOCIAL BUBBLES FLOATING IN A LIBRARY IN CENTRAL CHINATOWN.





# ARCHITECTURE ADVANCED THEORETICAL DESIGN

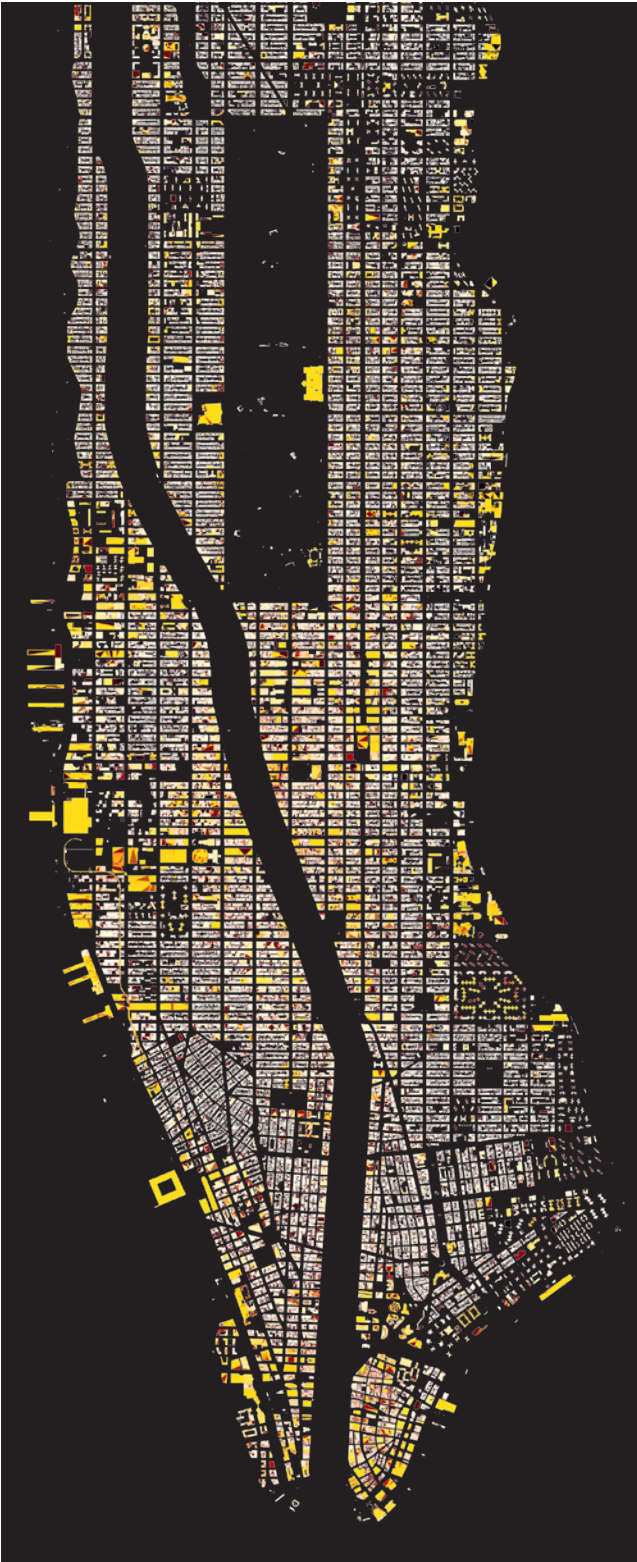




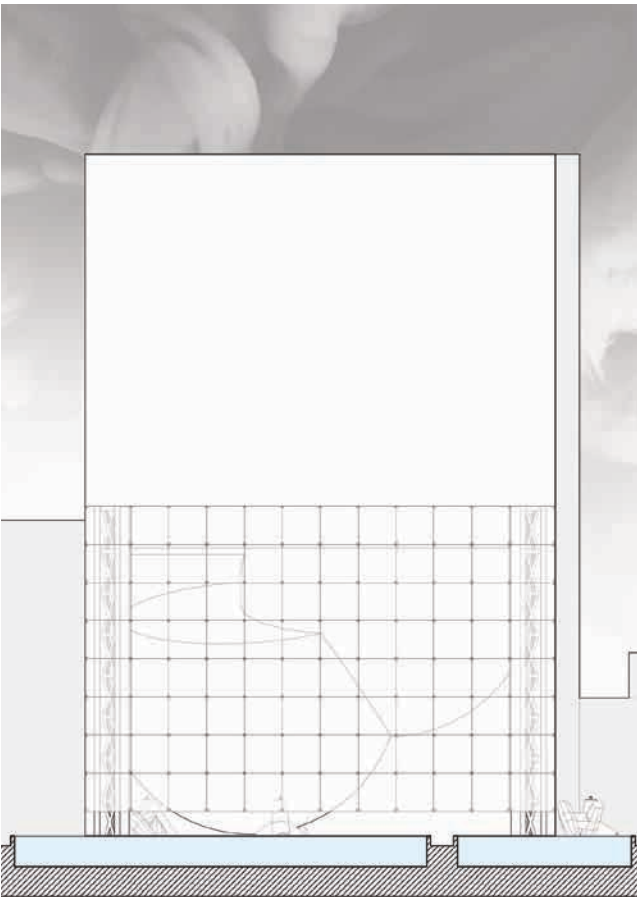
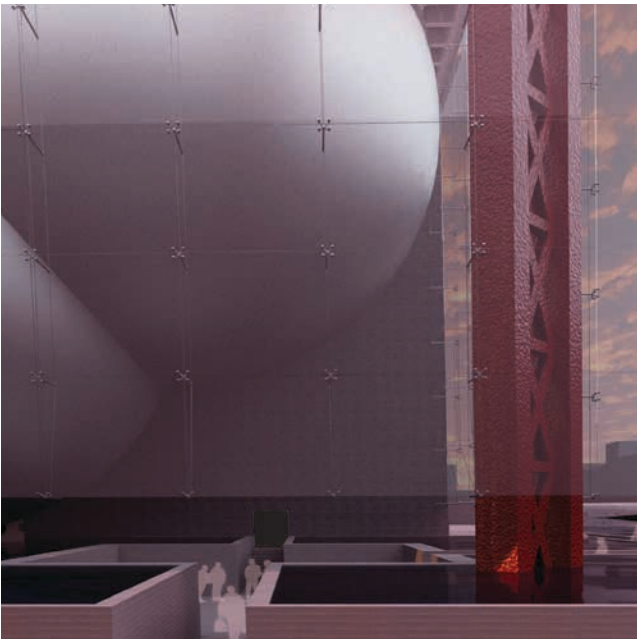
RECONSTRUCTING THE AVENUE

CARVING A NEW URBAN FABRIC WITH CIVIL DISOBEDIENCE

EXPLORING THE POSSIBILITIES OF WHAT A STREET CAN BECOME WHEN CLOSED TO PUBLIC TRAFFIC. REDEFINING THE URBAN FABRIC OF NEW YORK CITY TO REACT TO ITS PUBLIC NEEDS. THE PROJECT EXAMINES DRAMATIC MOMENTS IN THE HISTORY OF NEW YORK CITY; AND HOW THE MOST PIVOTAL AVENUE IN THE CITY COULD HAVE BEEN THERE FOR THE CITY. AN VEIN IN THE CITY OF LIFE REACTIVE TO THE CONDITIONS PRESENTED TO IT. AN EMBRACE IN TIMES OF DESPAIR, AN EAR FOR TIMES OF ANGER AND A GOLDEN EXAMPLE OF WHAT IT MEANS TO BE NEW YORK.



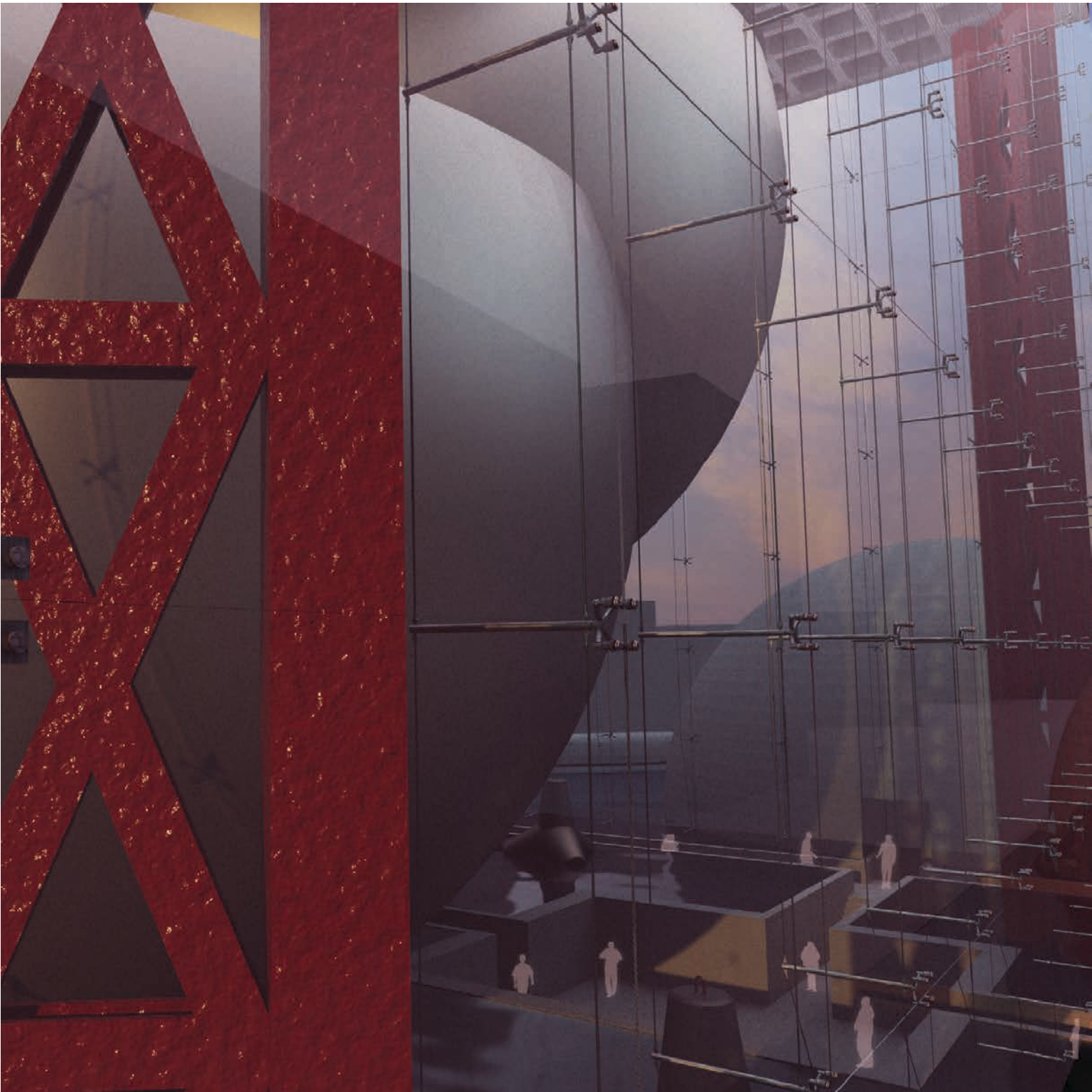




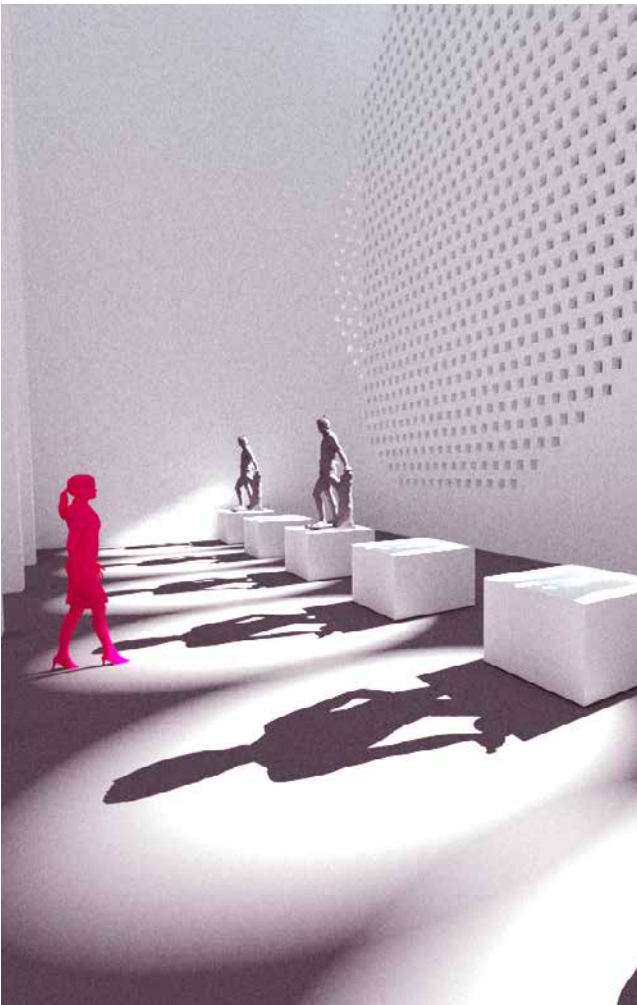
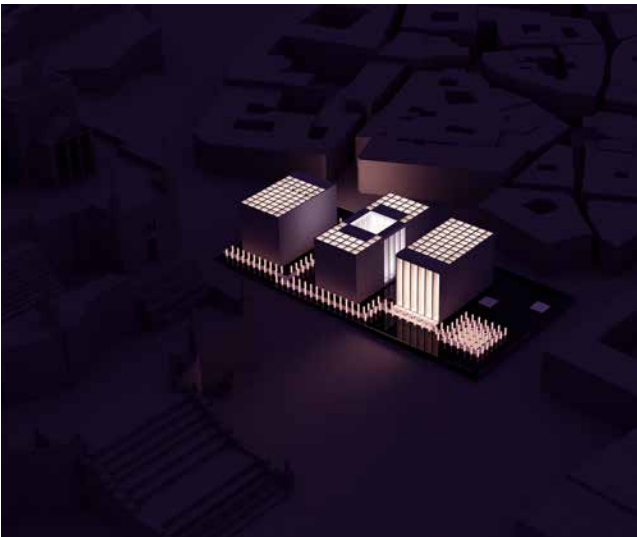
25-35 LAFAYETTE AVE.

A NEW ADDITION TO THE BROOKLYN ACADEMY OF MUSIC

A PROPOSAL FOR A NEW BUILDING TO COMPLEMENT THE EXISTING BROOKLYN ACADEMY OF MUSIC; EXPANDING IT TO A FULL EDUCATIONAL ACADEMY. FORMALLY EXPOSING NEW CONCERT HALLS FLOATING INTO A PUBLIC SPACE. SEEMINGLY FLOATING THE DORMITORY AND EDUCATIONAL SPACES ABOVE. PROVIDING THE BROOKLYN ACADEMY OF MUSIC WITH THE ABILITY TO HOUSE 150 STUDENTS; AS WELL AS EDUCATE MANY MORE. ADDING A NEW MUSIC HUB TO THE BOROUGH, AND BRINGING A WHOLE NEW INTERACTIVE SPACE FOR THE NEIGHBOURHOOD.







VIA DI S. VENANZIO 8

A MUSEUM OF THE LOST QUEER HISTORY

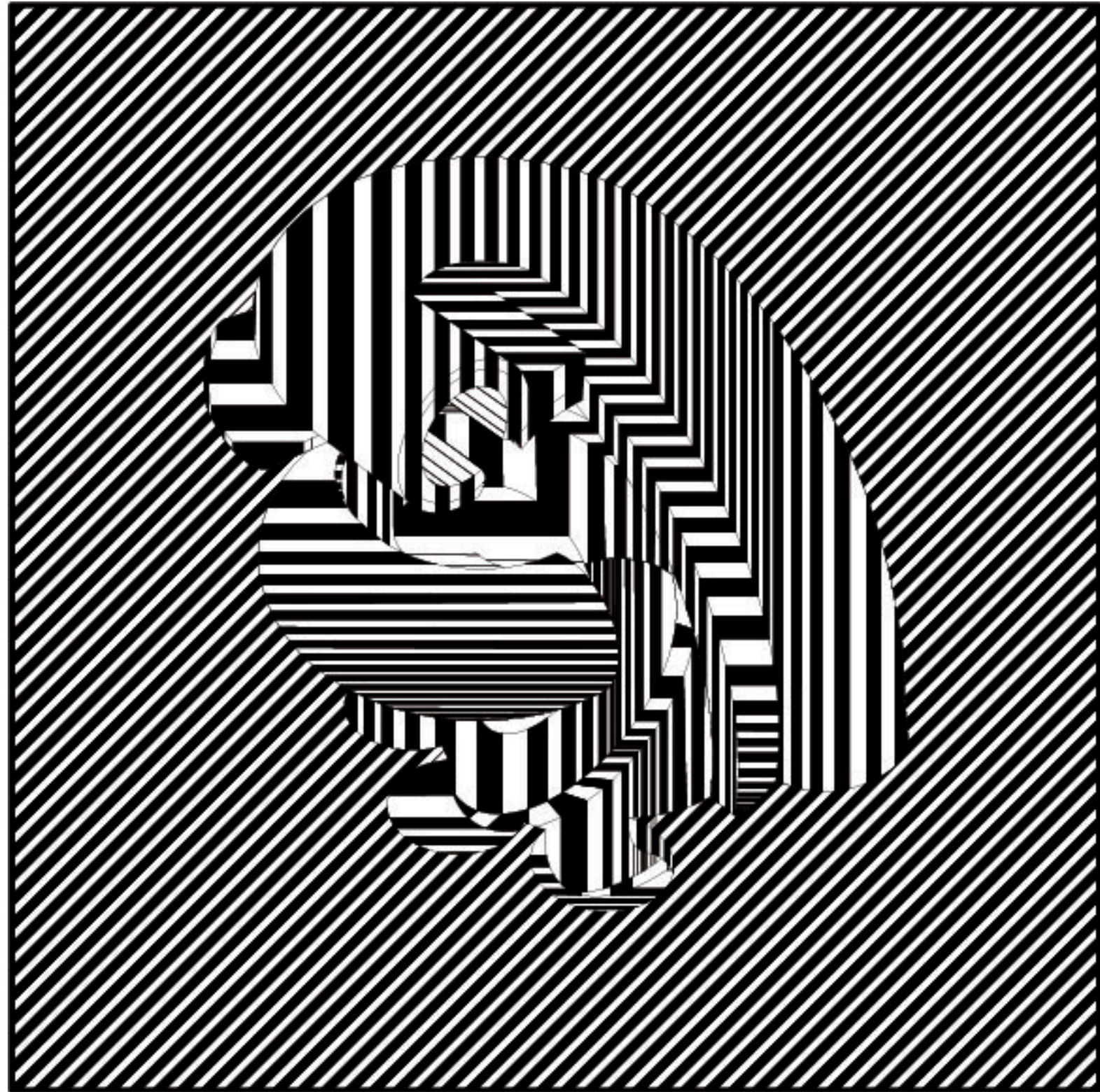
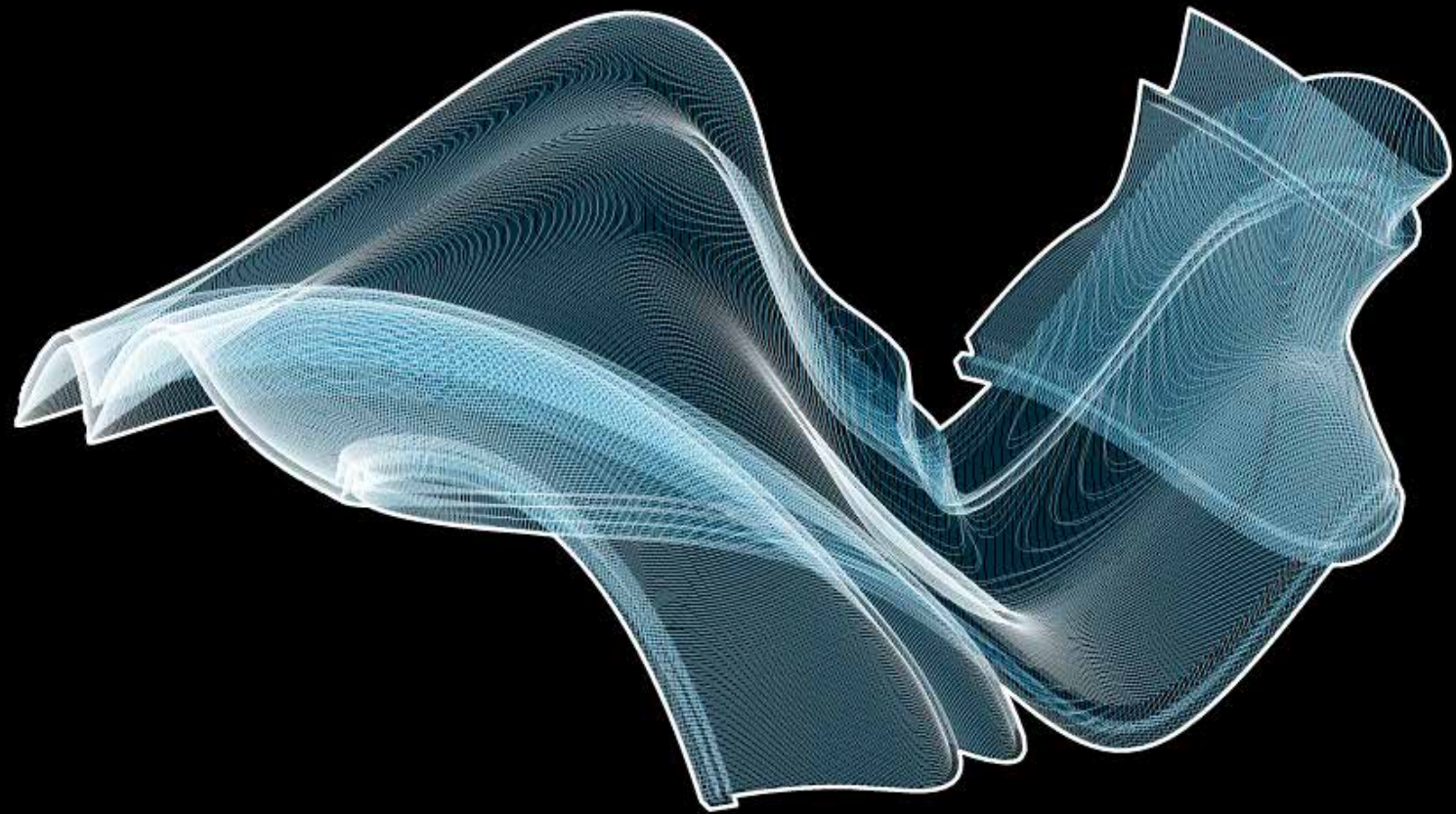
IN A SEMESTER REVOLUTIONIZED BY COVID-19. AN UNPRECEDENTED SITUATION CREATED THE OPPORTUNITY FOR IN DEPTH RESEARCH INTO THE URBAN FABRIC, HISTORY, AND SOCIO-POLITICAL IDEALS OF THE CAPITAL OF ITALY, ROME. A DEEP ANALYSIS OF THE HISTORY OF LGBT+ HISTORY IN THE STATE, CHURCH AND ROMAN ANTIQUITY. THIS REVEALED THE NEED FOR A MEMORIAL OF ERASURE, PROMISE AND OPPORTUNITY. RIGHT IN THE ORIGIN OF ITS YEARLY CELEBRATION OF PRIDE. A ROCK IN A STREAM OF COMPLACENCY, A BEACON OF CHANGE; ECHOING THE NEW IDEAS SHARED BY THE CHURCH AND BEGINNING TO MANIFEST IN THE STATE. A MUSEUM AND MONUMENT TO THE LOST HISTORY THAT HAS BEEN DESTROYED BY THE CITY, STATE AND CHURCH OF ITS ROOTS IN HOMOSEXUALITY. THE INGRAINED BELIEFS DESTROYED BY THE CHURCH AND FORGOTTEN BY THE STATE.



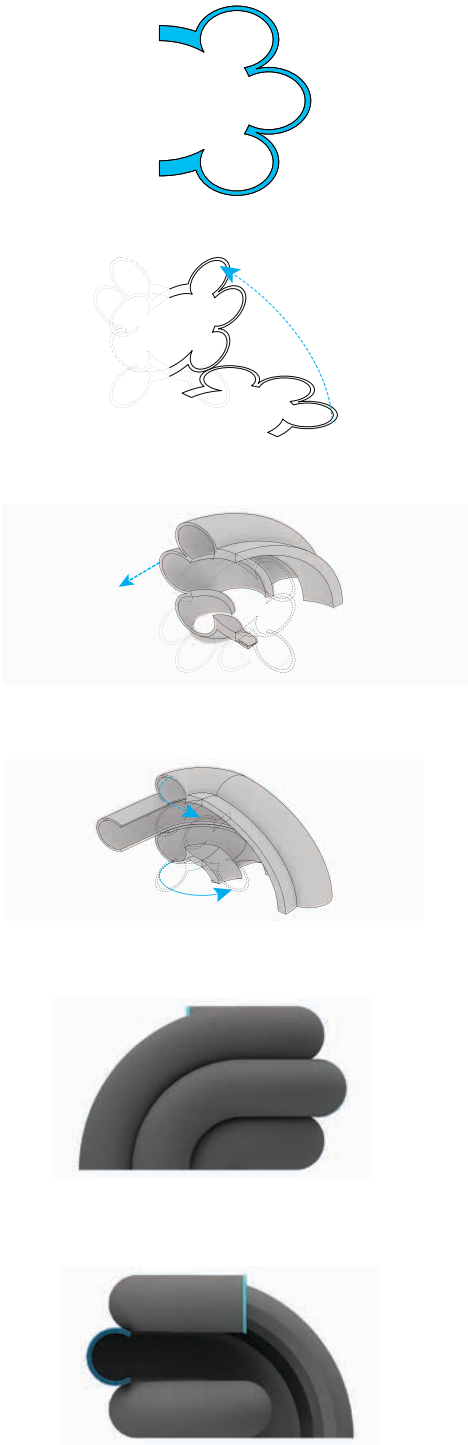


# ARCHITECTURAL REPRESENTATION

## COMPUTATION AND ANALYSIS







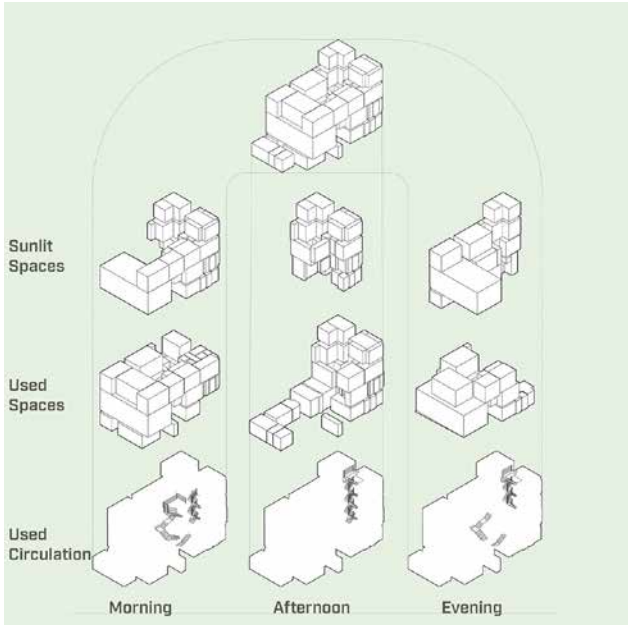
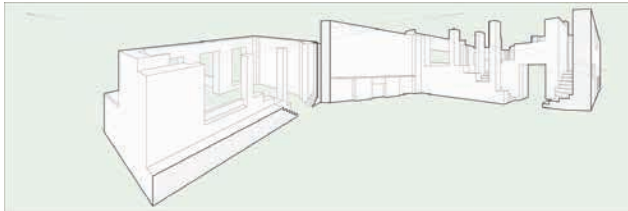
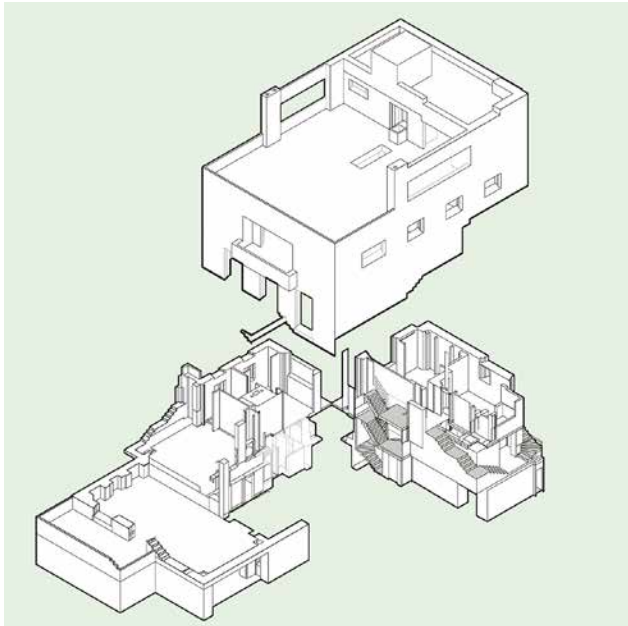
FAMILIAR, BUT STRANGE

ARCH 261 BIZARRE BAZAAR

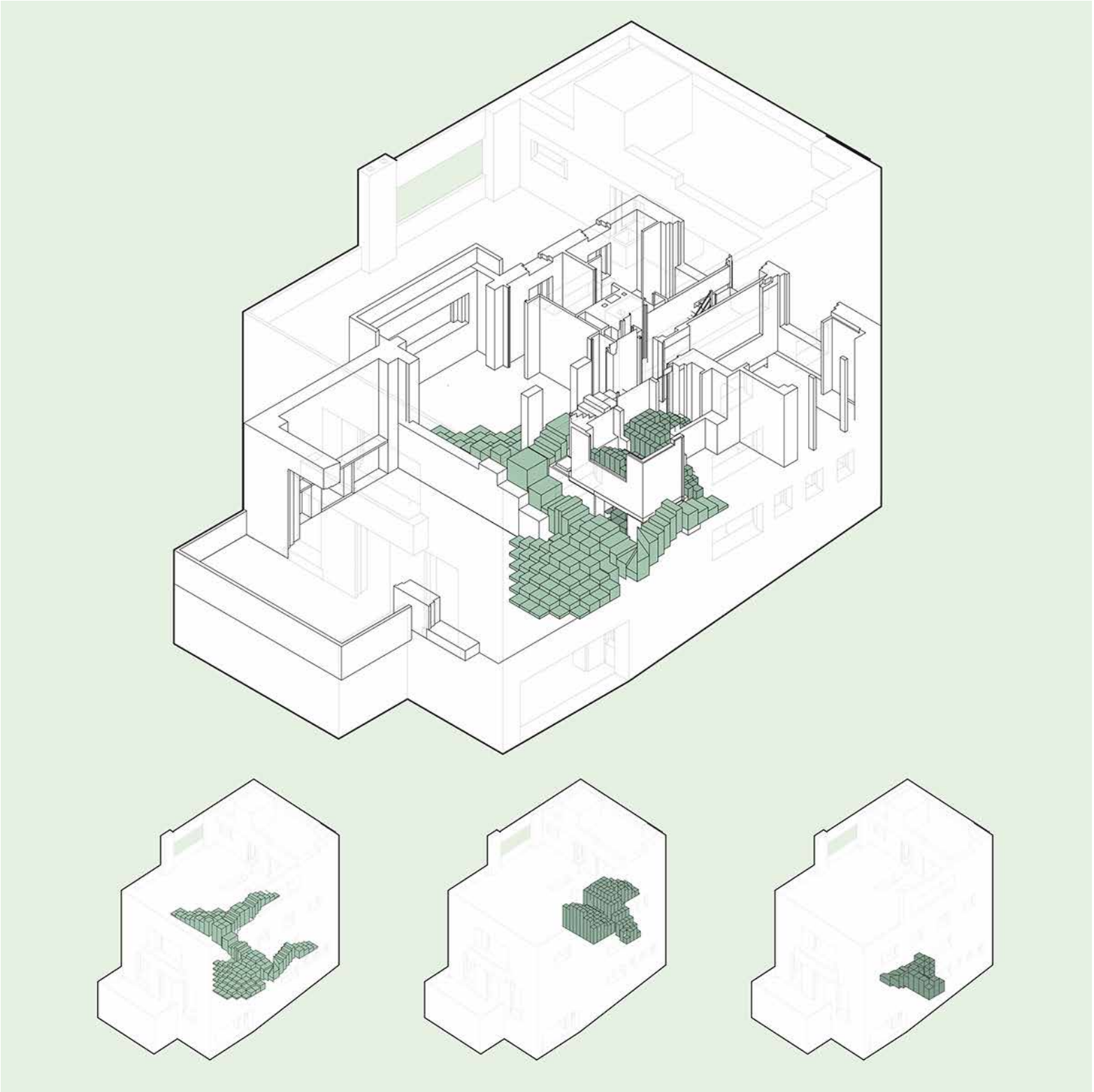
AN EXERCISE IN DIGITAL REPRESENTATION USING ABSTRACT GEOMETRY EXTRACTED FROM TO NOLI MAP. EXPERIMENTAL REPRESENTATION TECHNIQUES WERE PARAMOUNT, FOCUSING ON LEARNING AND ADAPTING GRAPHICS WITH FORM. TEACHING THE USE OF PROGRAMS LIKE V-RAY AND MAXWELL FOR RENDERING. AS WELL AS ANALYTICAL DRAWING TECHNIQUES TO EXPRESS FORM TROUGH DEPTH AND GRAPHICS.



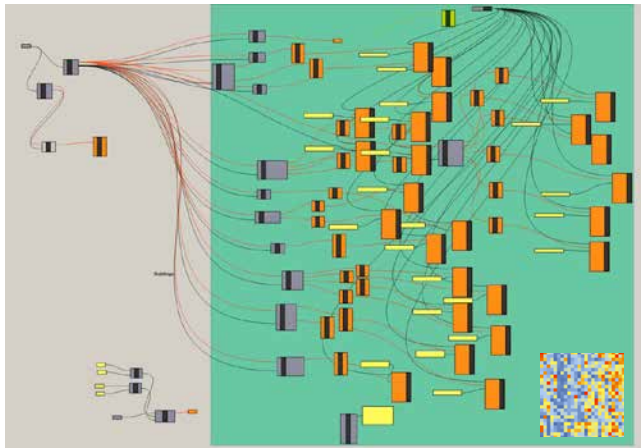
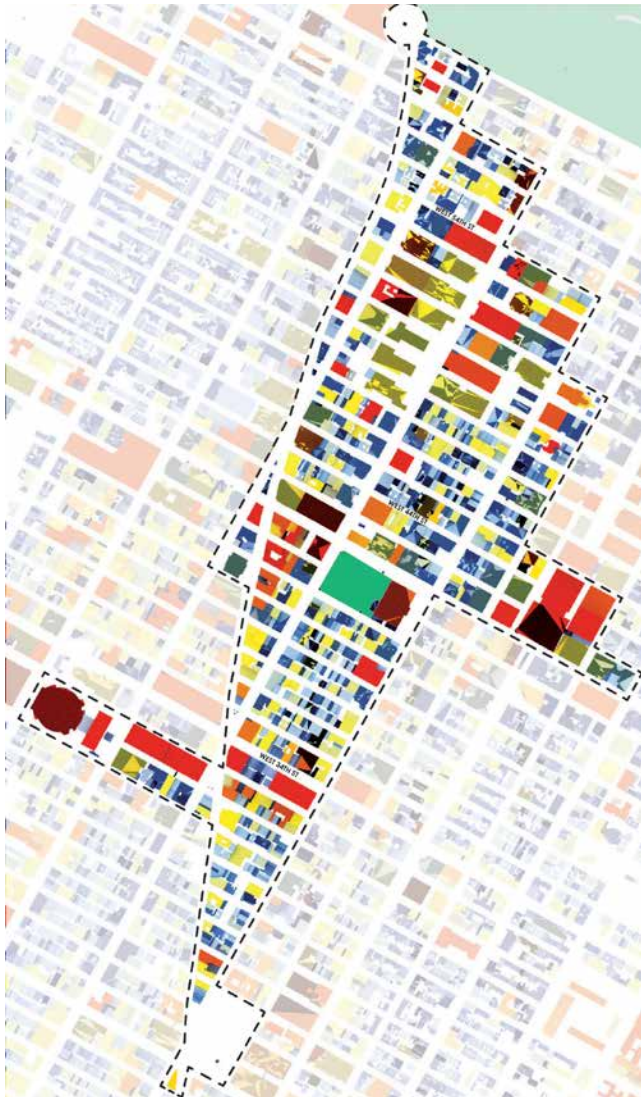




VILLA MULLER  
ARCH 262 REPRESENTATION  
AN ANALYTICAL EVALUATION OF ADOLF LOOS' ARCHITECTURE AND VOYEURISM. HIS PRECISE CONTROL OF SECTION IS DIAGRAMMED AND ANALYZED THREE DIMENSIONALLY TO UNPACK HIS ARCHITECTURAL TOOLS.



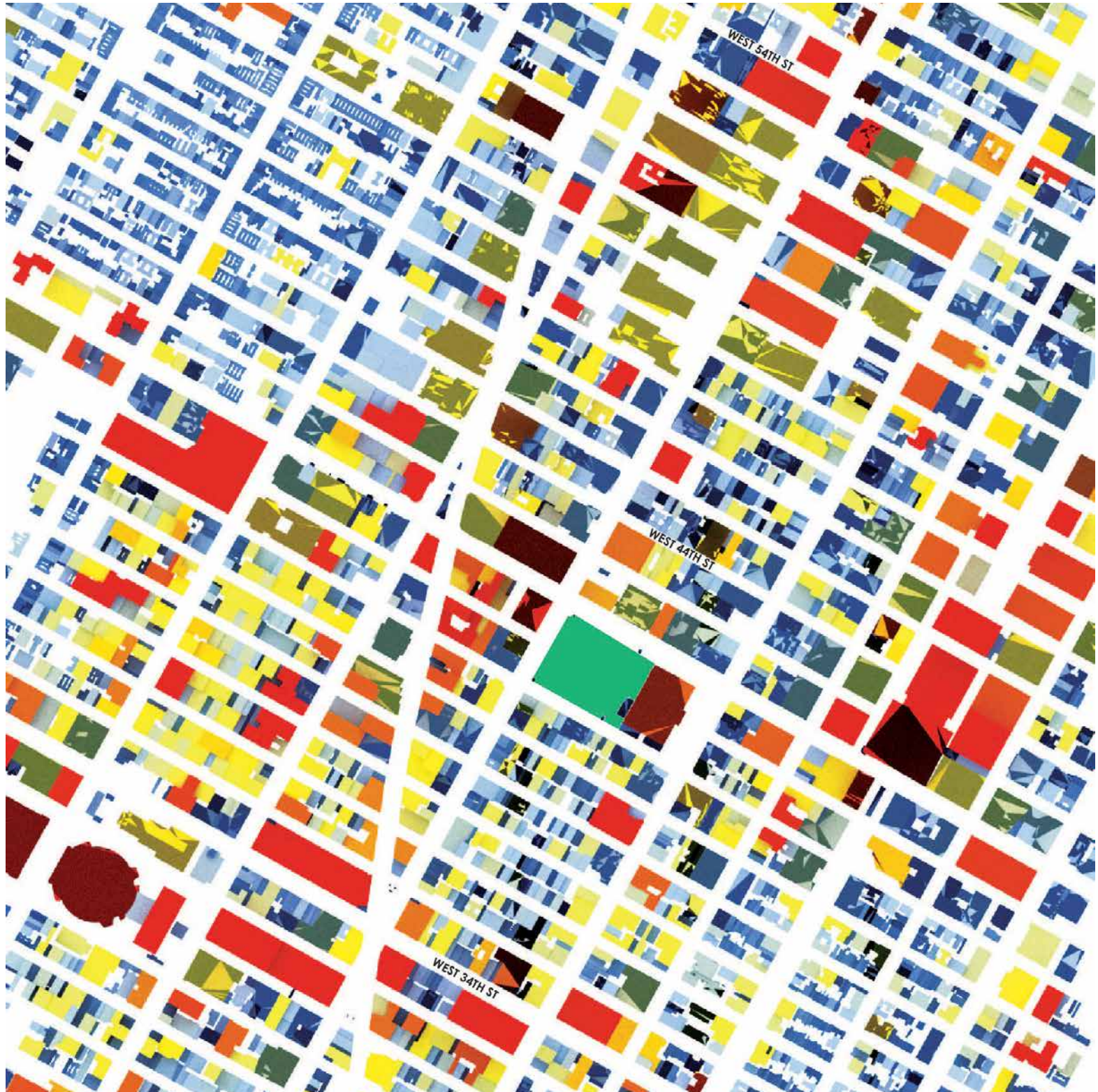




URBAN GENEALOGIES

GRASSHOPPER COMPUTATIONAL DESIGN | PROF. GONZALO LOPEZ

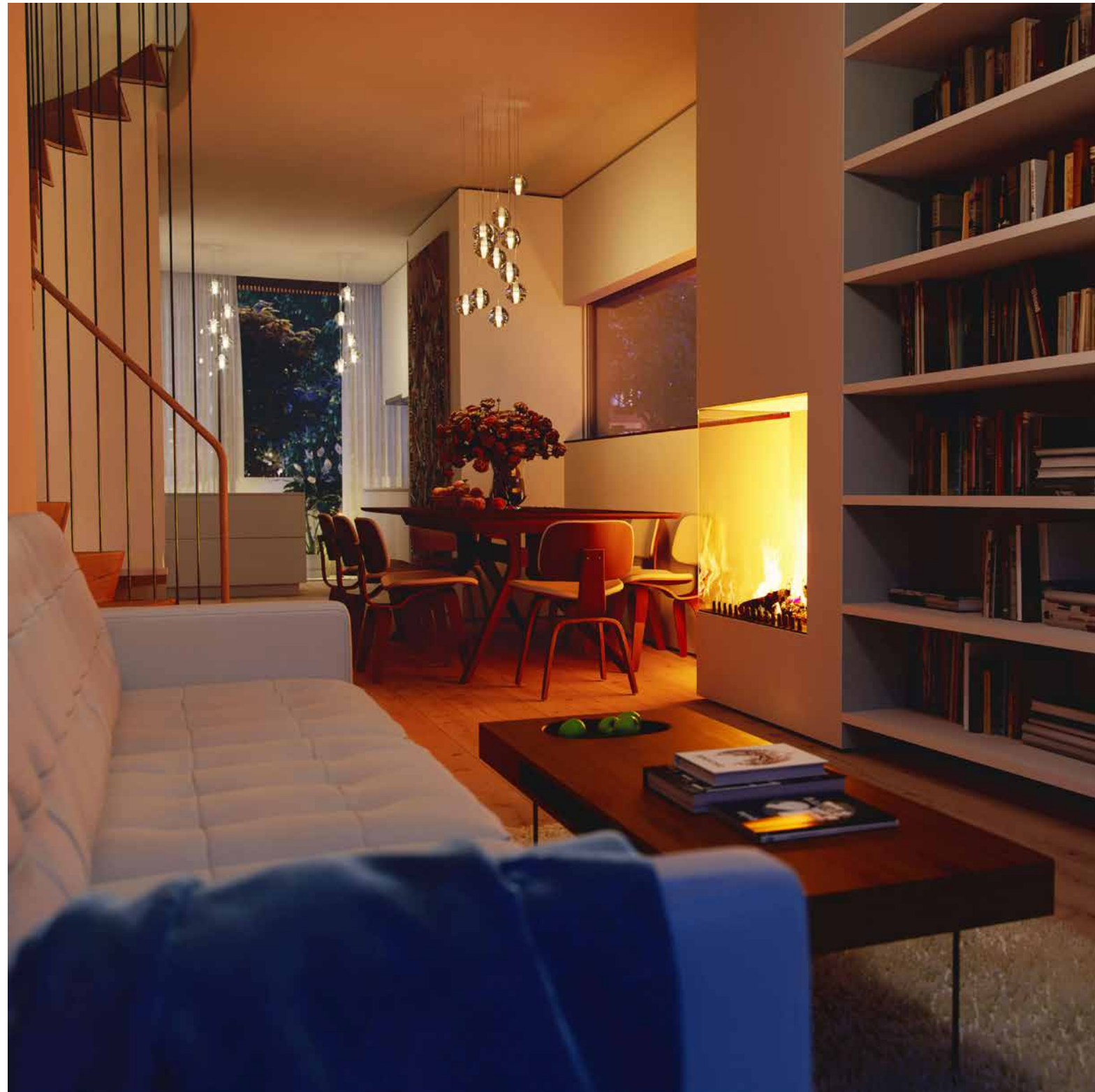
GRASSHOPPER BASED ANALYSIS OF MIDTOWN MANHATTAN. TAKING ON A LARGE SCALE ZONE ENCOMPASSING COLUMBUS CIRCLE TO MADISON SQUARE PARK, BROADWAY IS ANALYZED AS A CARVE THROUGH THE GRID OF MANHATTAN. SPATIAL ANALYSIS IS COMPLETED THROUGH COMPLEX REMAPPING OF POLYSURFACE NORMALS THROUGH GRASSHOPPER INTO A TEXTURE MAP FOR RENDERING. ALLOWING QUICK EXAMINATION OF VOLUMETRIC SPATIAL DATA.





# ARCHITECTURE & INTERIORS

## PROFESSIONAL WORK



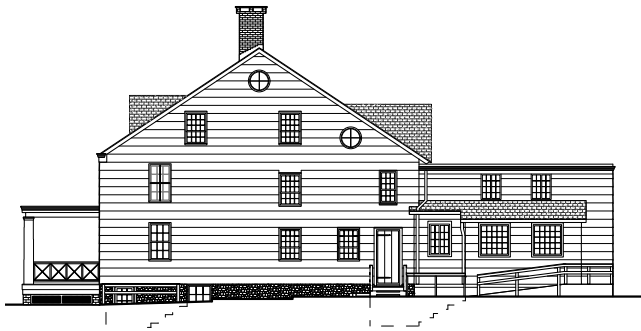




300 VANDERBILT AVE.  
WITH: RAMONA ALBERT ARCHITECTURE

HISTORICALLY, VANDERBILT AVENUE ACTED AS A THOROUGHFARE FLANKED BY CARRIAGE HOUSES. MANY OF THESE CARRIAGE HOUSES CONTINUE TO EXIST TODAY. THE FORM OF THE BUILDING FOLLOWS THE DEEP HISTORY OF THE STREET AND NEIGHBORHOOD. DETAILED RENDERINGS WERE DEVELOPED TO THOROUGHLY DESCRIBE THE FEELING OF THE BUILDING. PERFECTING THE SMALLEST BLOCK ON THE LOT FROM A CHALLENGE TO A FEATURE.





LLOYD MANOR HOUSE

15 LLOYD HARBOR ROAD, CONDITIONS REPORT AND LANDMARK DOCUMENTATION : CTA/PCH

LLOYD MANOR HOUSE WAS ORIGINALLY BUILT IN 1767 FOR THE FAMILY FOR WHICH IT SHARES ITS NAME. IT ACTED AS THE CENTRAL HOME FOR A 3,000 ACRE AGRICULTURAL PLANTATION. THROUGH THE YEARS IT HAS RECEIVED MULTIPLE ADDITIONS AND HAD THEM SUBSEQUENTLY REMOVED. THE MANOR NOW EXISTS AS AN AMALGAMATION OF MANY DIFFERENT TIME PERIODS AND CONSTRUCTION METHODS.







BEDFORD-UNION ARMORY  
NEW HEIGHTS YOUTH INC. | MASTERPLAN : MARVEL ARCHITECTS | HISTORICAL PRESERVATION: CTA ARCHITECTS  
A LARGE SCALE URBAN PROJECT IN THE HEART OF BROOKLYN. PROGRAM INCLUDING A NEW RECREATION CENTER FOR AFFORDABLE ATHLETIC AND FITNESS RESOURCES FOR LOCAL FAMILIES, SCHOOLS AND YOUTH LEAGUES. FLEXIBLE COMMUNITY SPACES, AND OFFICE SPACES FOR NON-PROFIT COMPANIES. MASTER PLAN BY MARVEL ARCHITECTS, INTERIORS, ENTRY AND HISTORIC PRESERVATION BY CTA ARCHITECTS P.C. CURRENTLY IN PROCESS



# CRAFTSMANSHIP & GRAPHICS

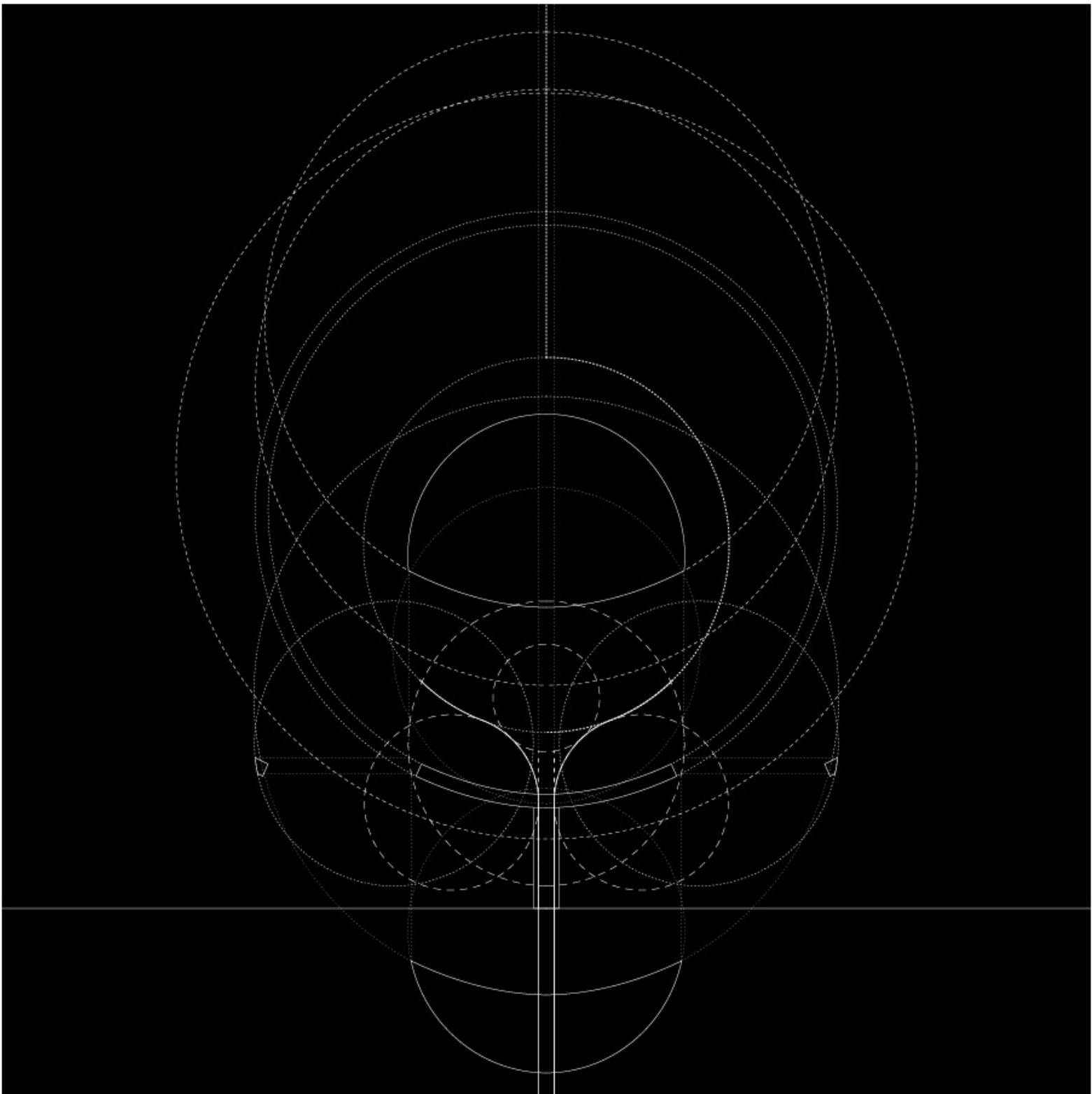




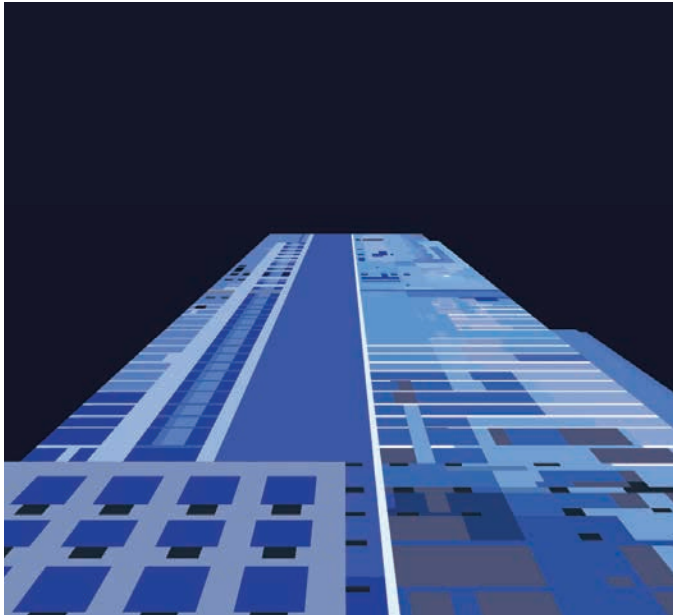


24x24x24 SOLSTICE EXHIBIT  
AT THE STOREFRONT FOR ART AND ARCHITECTURE

A 24 HOUR LONG MARATHON OF EVENTS HOSTED BY 24 ARCHITECTS AND DESIGNERS. CENTERED ON 24 STOOLS THAT PROVIDED AN ANTIDOTE TO THE OVER POLISHED DESIGN. AN OPPORTUNITY TO CONNECT, PROPOSE, AND ENGAGE DIVERSE DESIGN INTERESTS. DESIGNERS HOST AN HOUR OF PROGRAMMING DURING THE LONGEST DAY OF THE YEAR. OUR PROPOSAL CREATED A VIRTUAL INSTALLATION THROUGH GOOGLE CARDBOARD ACCESSIBLE THROUGH SMART PHONES, EXPLAINING THE PERSONS, PLACES, AND THINGS INVOLVED IN THE PROCESS OF MAKING. FEATURED IN ARCHITECTURAL DIGEST COVERAGE OF THE EVENT







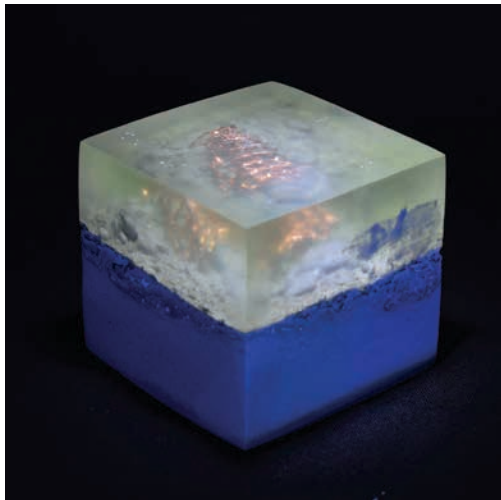
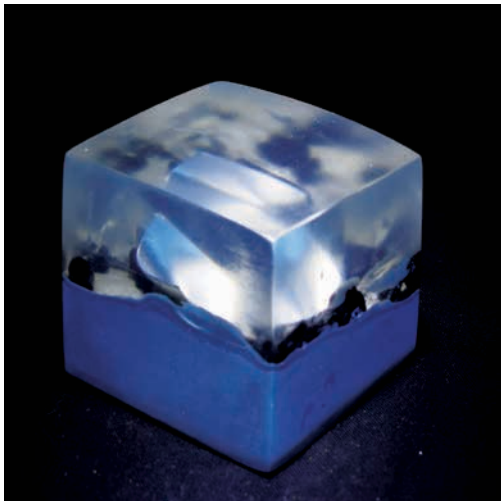
BROOKLYN PORTRAITS

333 SCHERMERHORN STREET, 300 ASHLAND PLACE, 100 WILLOUGHBY STREET

DOWNTOWN BROOKLYN IS AN EVER RAPIDLY GROWING CENTER FOR LIFE IN NEW YORK CITY. LARGE SCALE APARTMENT COMPLEXES CREATE INTRINSIC NEIGHBORHOODS WITHIN THEMSELVES, YET THEY ARE A WORLD AWAY FROM TRADITIONAL BROOKLYN NEIGHBORHOODS. CONNECTING BUILDINGS VISUALLY AND ARTISTICALLY OPENS UP NEW AVENUES FOR CONNECTION.







ON THE ART OF MAKING  
RESIN, CONCRETE AND IMPEDIMENTA

MIXED MEDIA PRODUCTION COMES ALIVE IN THREE DIMENSIONAL PAINTINGS. DIFFERENT TEXTURES AND COLORS ARE SKEWED THROUGH RECTANGULAR FORCED PERSPECTIVE OF THE FORM. EACH PIECE GOES THROUGH A MULTI-LAYER CASTING SEQUENCE. THEY ARE THEN SANDED, POLISHED, GLAZED AND SEALED BY HAND.

FEATURED IN THE SAAMA ANNUAL ARCHITECTURAL MODEL CATALOGUE



CHRISTOPHER BROWN

EDUCATION:

BACHELOR OF ARCHITECTURE, PRATT INSTITUTE, BROOKLYN, NY, ANTICIPATED 2021  
WITH MINORS IN PSYCHOLOGY AND SOCIAL JUSTICE / SOCIAL PRACTICE  
GEORGIA DUAL ENROLLMENT PROGRAM, CHATTAHOOCHEE TECHNICAL COLLEGE, ATLANTA, GEORGIA, 2014-2016

EMPLOYMENT:

DESIGN TECH I, CTA ARCHITECTS P.C., DECEMBER 2018 - PRESENT  
DESIGN ASSISTANT, RAMONA ALBERT ARCHITECTURE, 2017 - 2018  
INTERN, ART PLUMBING COMPANY, 2014 - 2016

PERSONAL ACTIVITIES:

PANELIST: PRATT FUTURES, PASS THE MIC WITH DANA MCKINNEY, 2020  
MEMBER: SOCIETY OF AMERICAN REGISTERED ARCHITECTS; NEW YORK, 2020  
FEATURED IN THE SAAMA ARCHITECTURAL MODELS CATALOGUE, 2020  
INAUGURAL MEMBER: THE ARCHITECTURE LOBBY, PRATT INSTITUTE CHAPTER, 2020  
PRATT ROME SCHOLAR, 2020  
STUDENT REPRESENTATIVE, PRATT DEAN SEARCH COMMITTEE, 2019  
STUDENT MEMBER, BROOKLYN HISTORICAL SOCIETY, 2018 - PRESENT  
CHIEF FINANCIAL OFFICER, PRATT INSTITUTE STUDENTS FOR INCLUSIVENESS IN DESIGN (SAID), 2017 - PRESENT  
ACTIVE MEMBER, GEORGIA TRUST FOR HISTORICAL PRESERVATION, 2016-2018  
ACTIVE MEMBER, SAVANNAH HISTORICAL SOCIETY, 2016 - 2018  
SPEAKER, SAVANNAH COLLEGE OF ART AND DESIGN; ARCHITECTURAL PRESERVATION YOUTH SUMMIT, 2016

