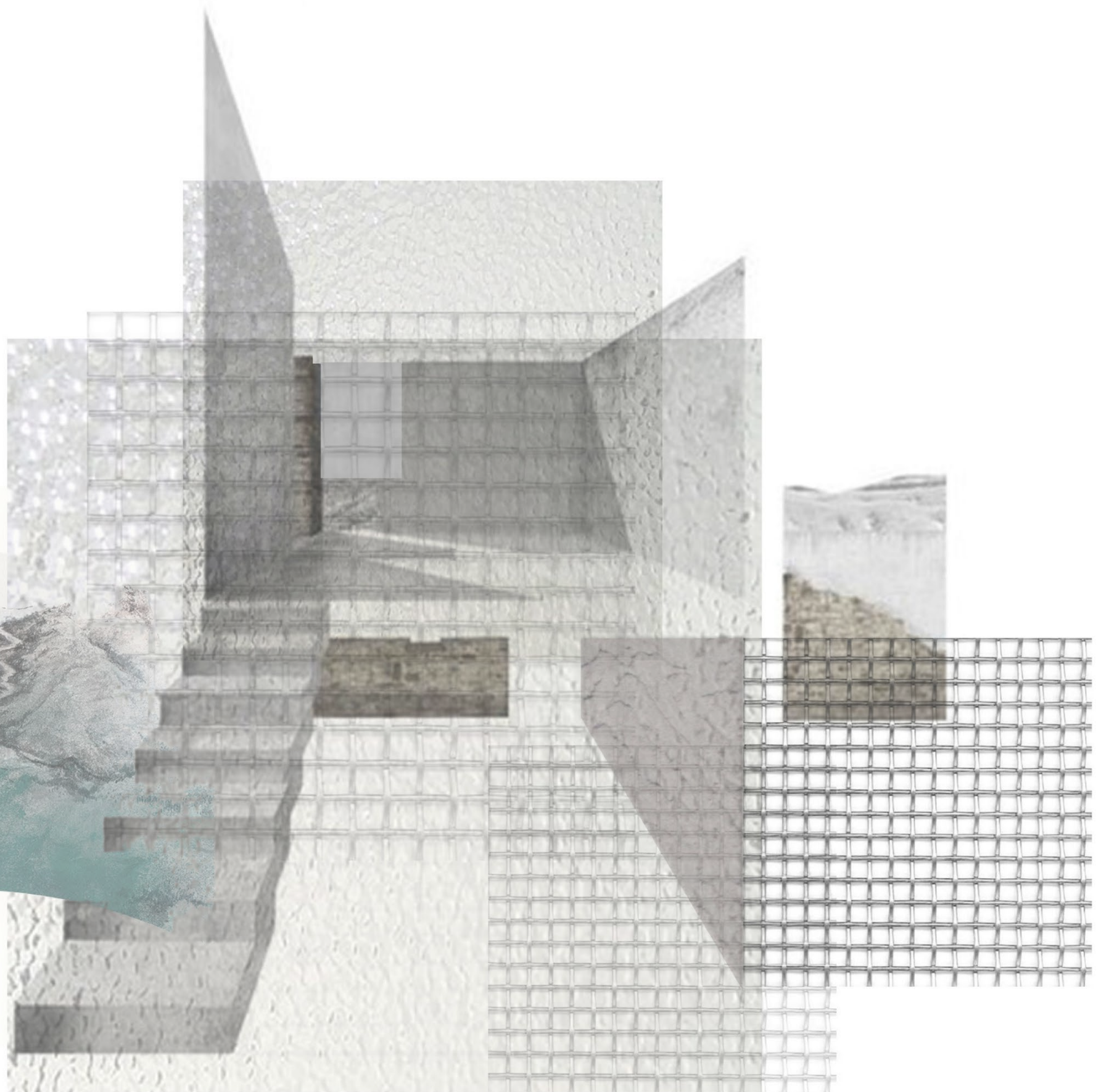
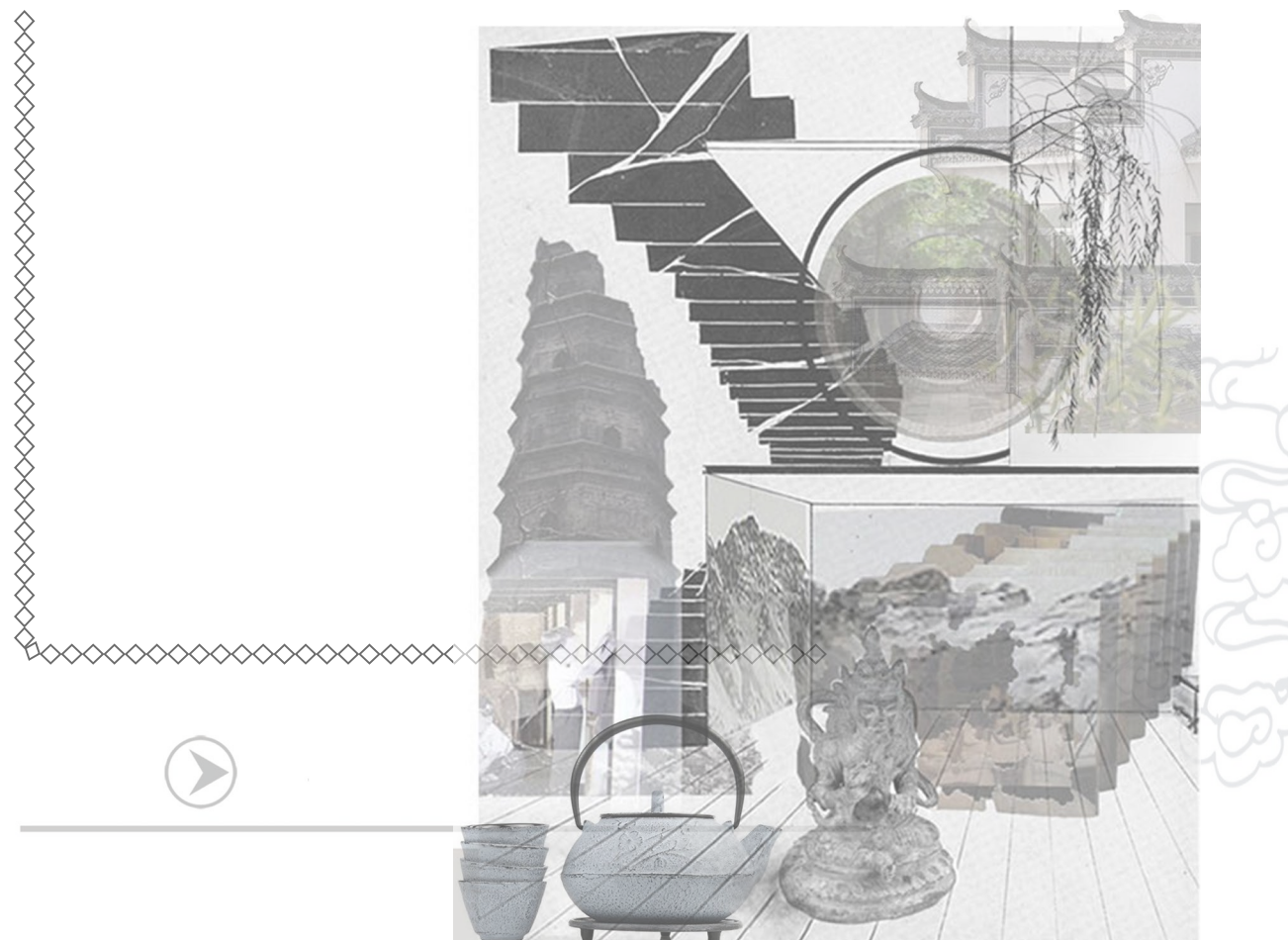
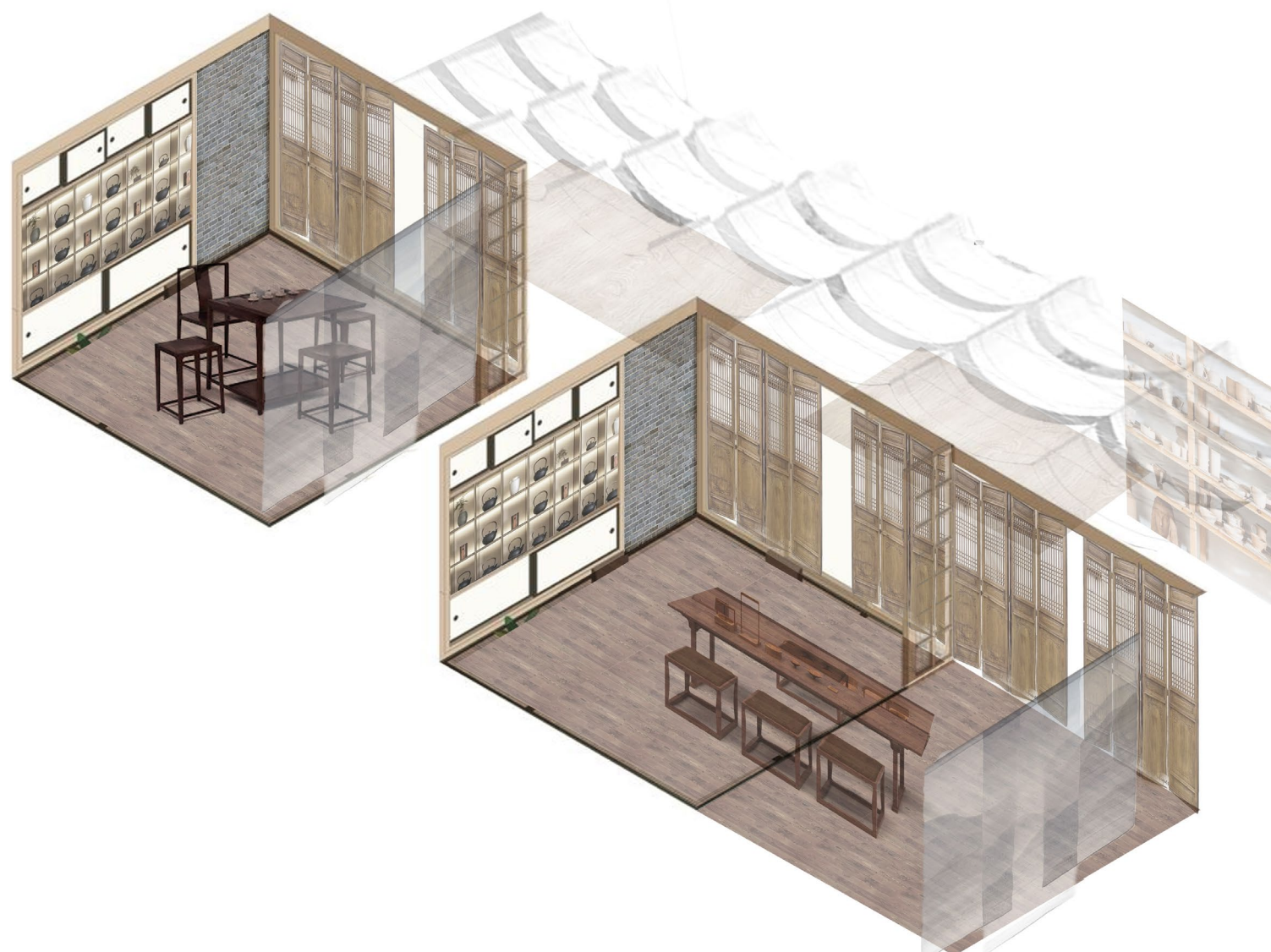
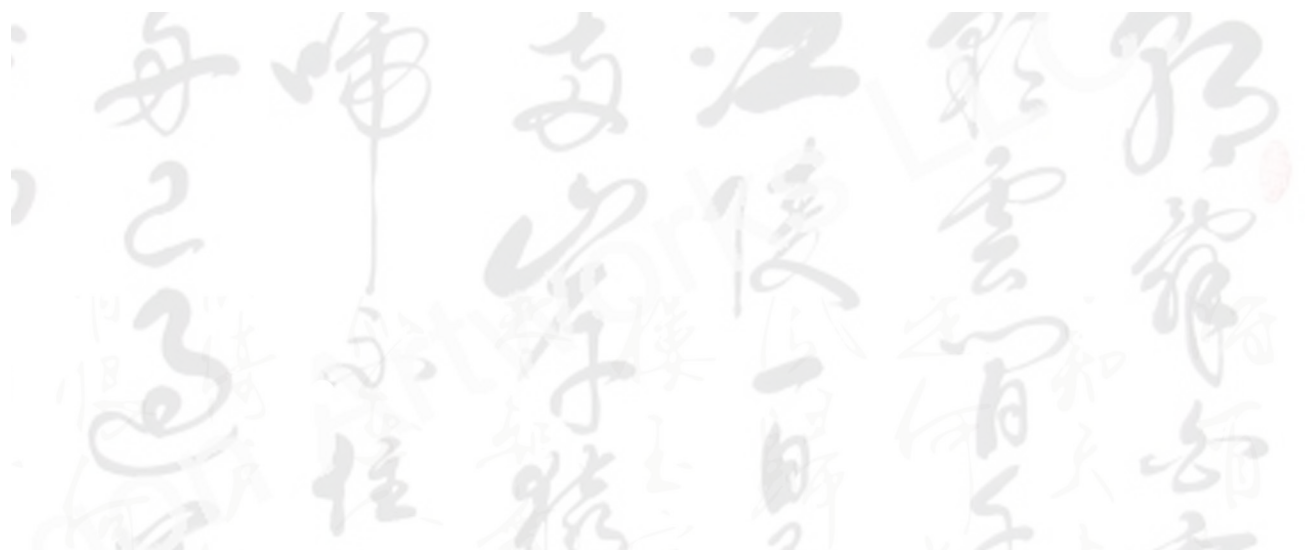


METAMORPHOSIS

"ON" TEA HOUSE

PRATT INSTITUTE- IND
INT 405-06
XINYU YU
PROFESSOR BRENDAN MORAN





A TEAHOUSE's EVOLUTION

A NEW MUSEUM

HISTORY CANNOT BE FORGOTTEN
IN BRICKS, IN TEA, IN MINDS.



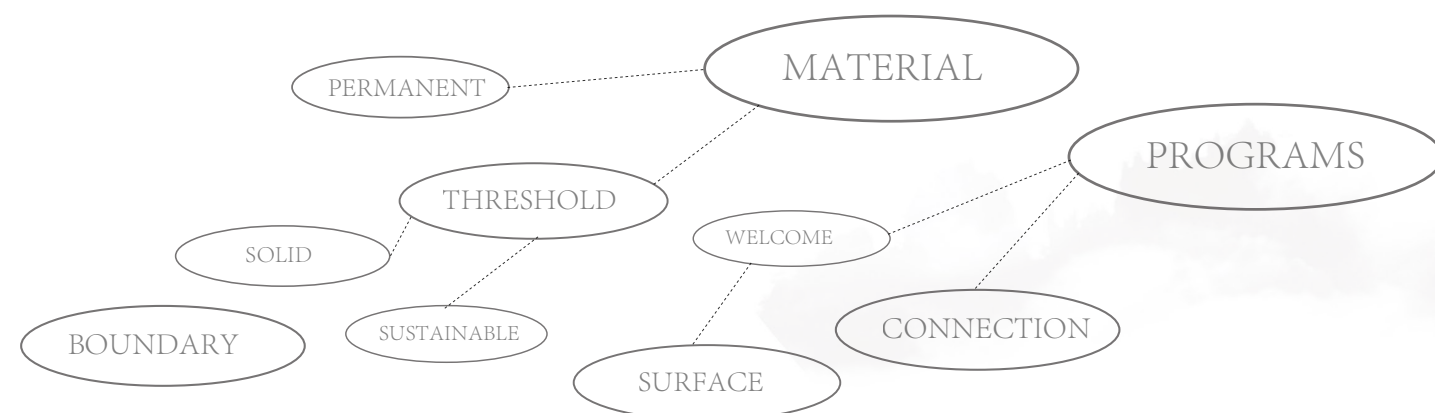
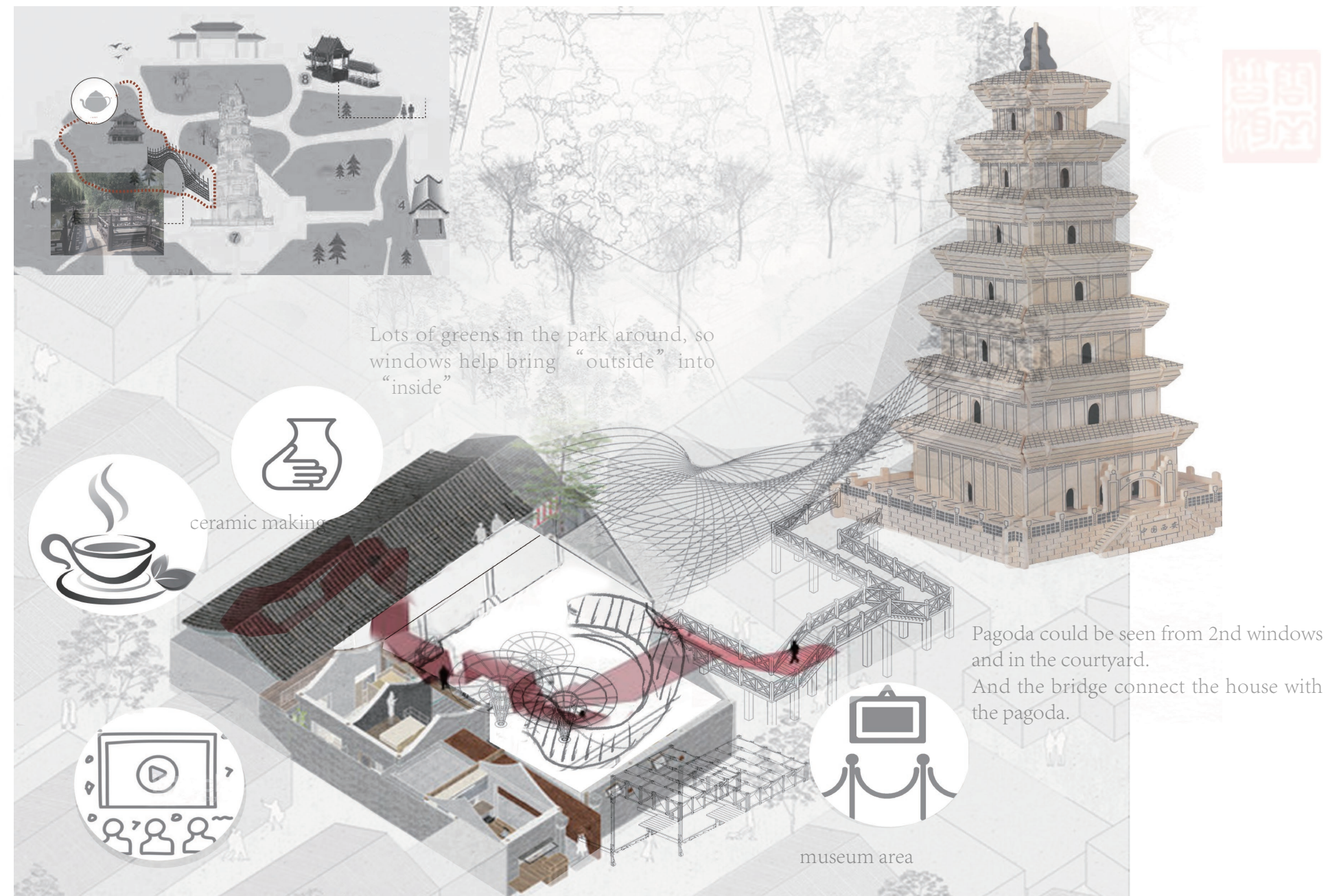
"ON" TEAHOUSE

- How to design modern building(structure) in traditional site?
- How can the whole building be renovated (transition between “hallway” &” room”)?
- How can the interior space be linked with the exterior bridge& courtyard?

My project is to design in a Chinese teahouse near an ancient pagoda, adding museum as a new program, which **educates visitors about the ancient tea culture and buddha culture.**

By redesigning the teahouse, the new tea & buddhism museum will recontextualize tea practise within the traditional culture (pagoda and teahouse), by employing modern elements that display the traditions using modern interpretations of traditional interior and exterior elements.

Also, increasing the local people’s interests of museum culture that lost nowadays is another task of the project.



Hallway is the space between rooms to let people pass.

My design strategy is to treat long “hallway” as potential space to let people stop as “room” does.

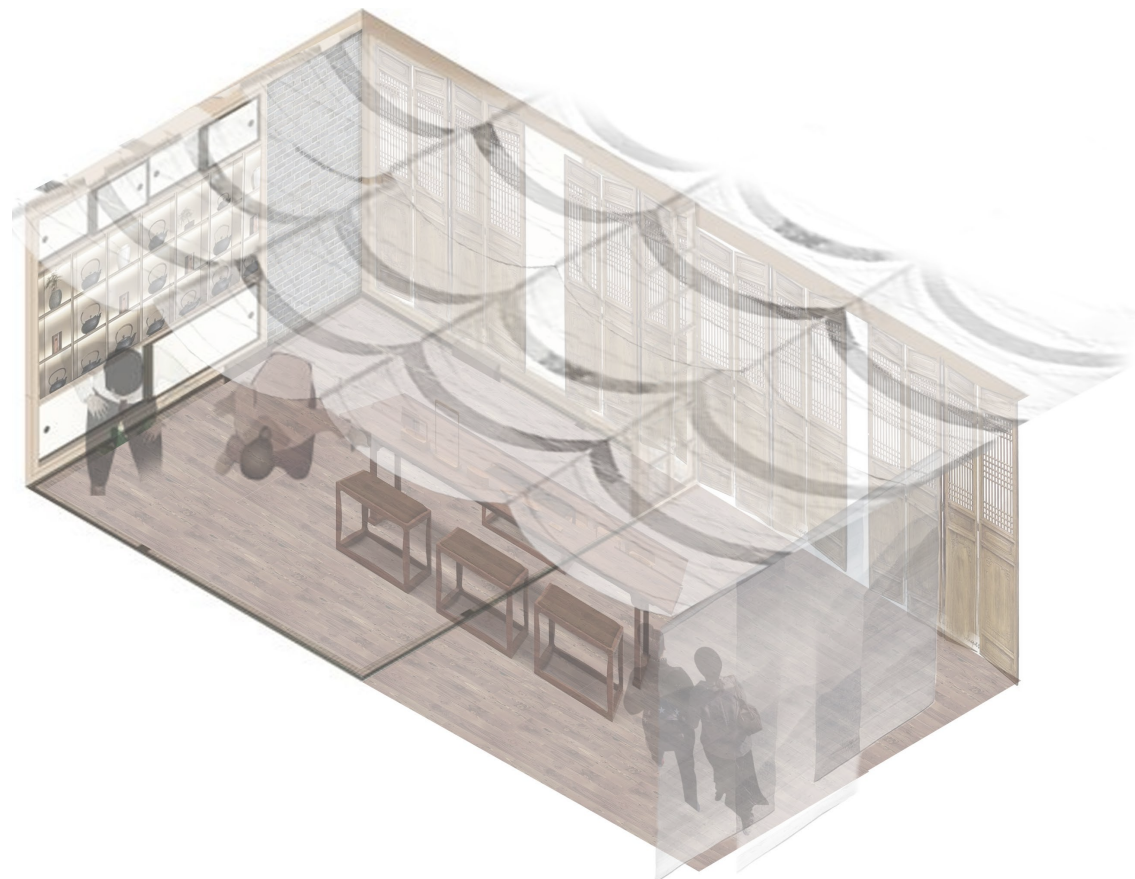
CULTURAL RELATIONSHIP:

Teahouse --Pagoda

Buddhism deems that tea helps with cultivating the body and mind. Therefore, **drinking tea** has become a common practice of monks. They “get up, wash their face and hands, and drink tea in the morning. Then, they sit during meditation and then take a nap.



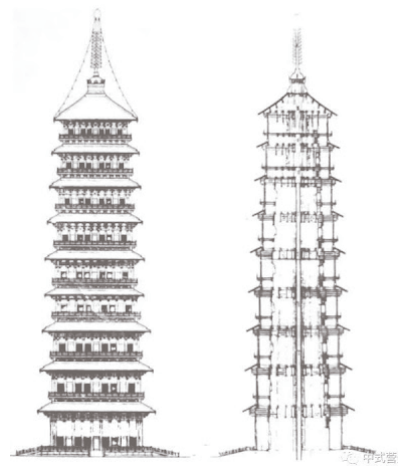
Yum cha (traditional Chinese: 飲茶) also known as going for dim sum (Cantonese: 食點心), is the Chinese tradition of brunch involving Chinese tea and dim sum. **Traditionally, the elderly gather to eat dim sum after morning exercises.**



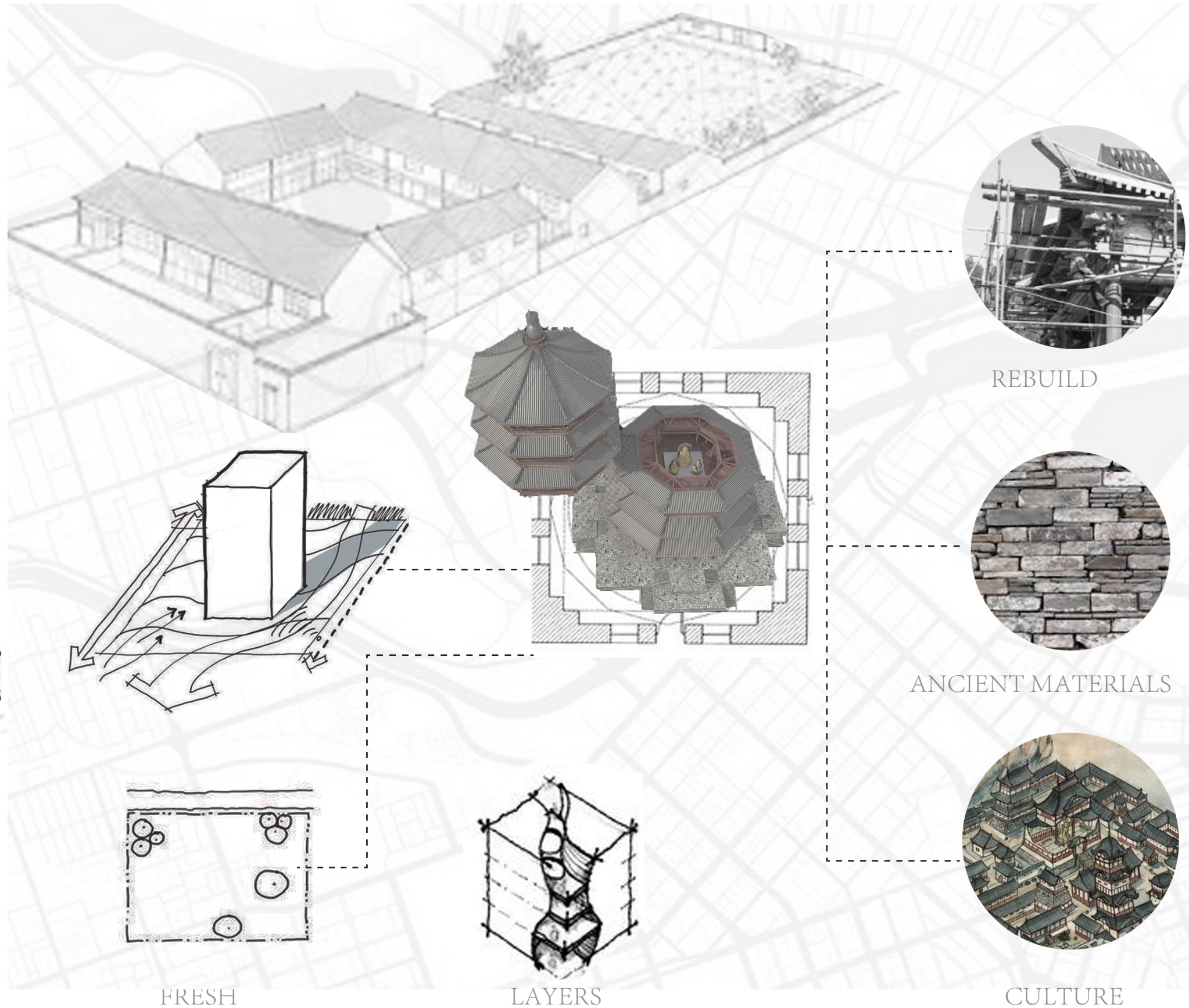
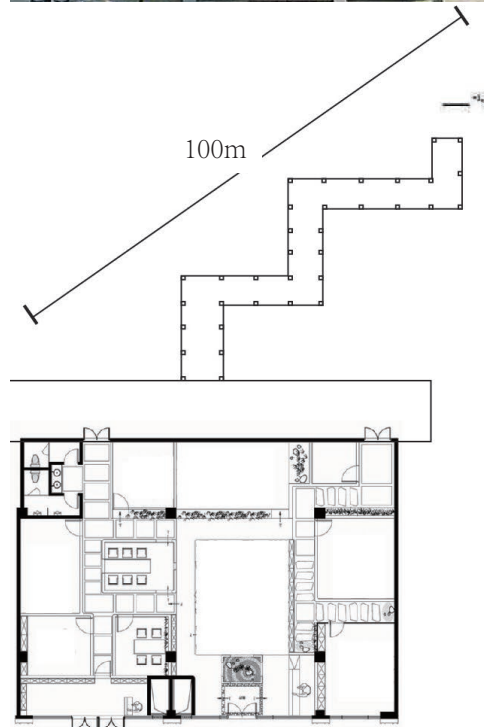
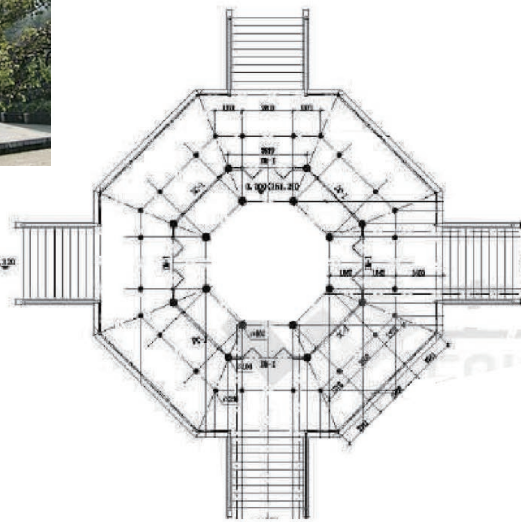
SIGNIFICANCE OF SITE

Local people built the whole park for honoring the ancient pagoda. There are visitor center, pavillions, viewing platforms, etc.

The site needs to near an ancient architecture or landmark so it has the connection between new and old.



facade



REBUILD

ANCIENT MATERIALS

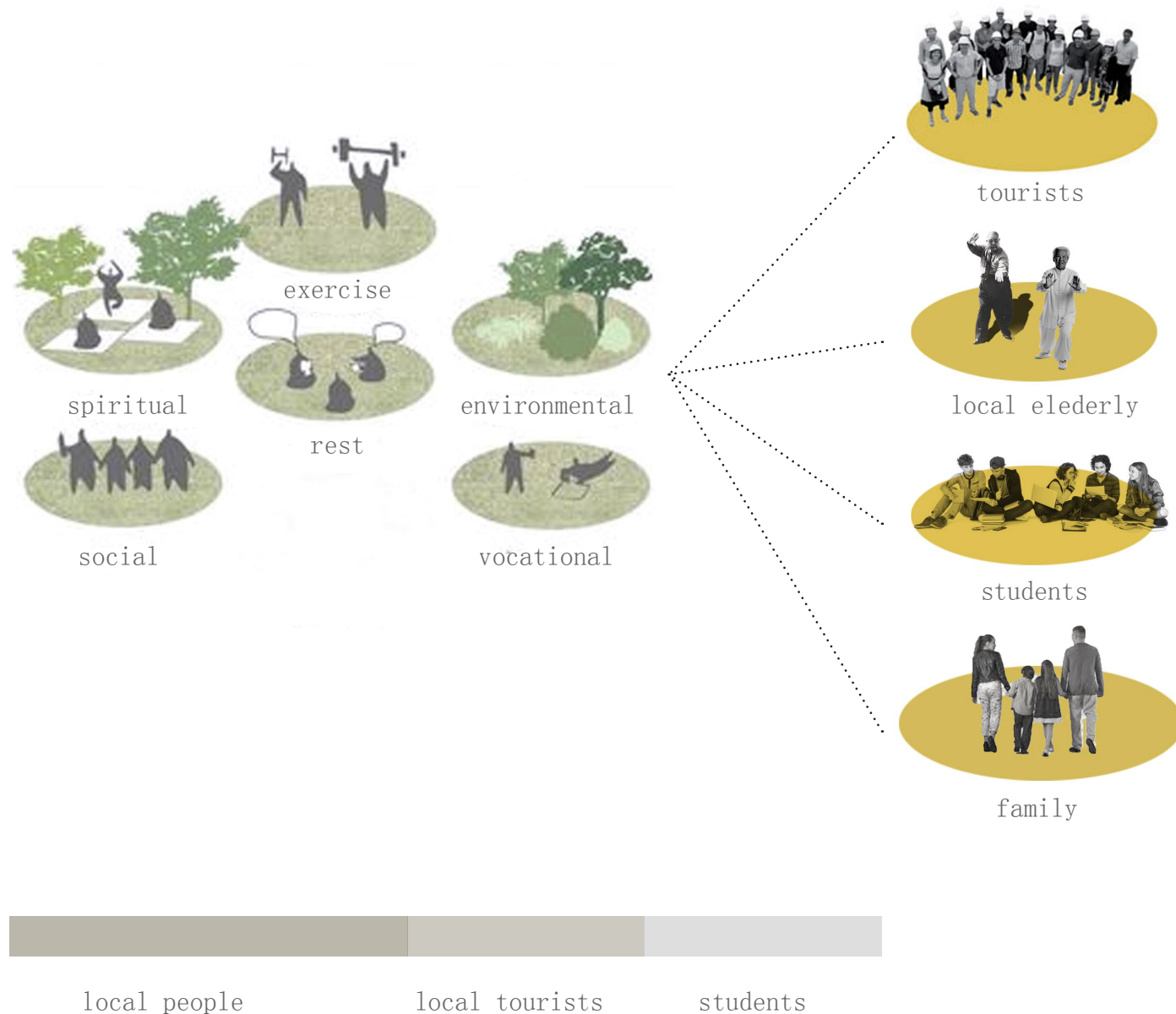
CULTURE

LAYERS

FRESH

USERS

tourists-elder-families-students

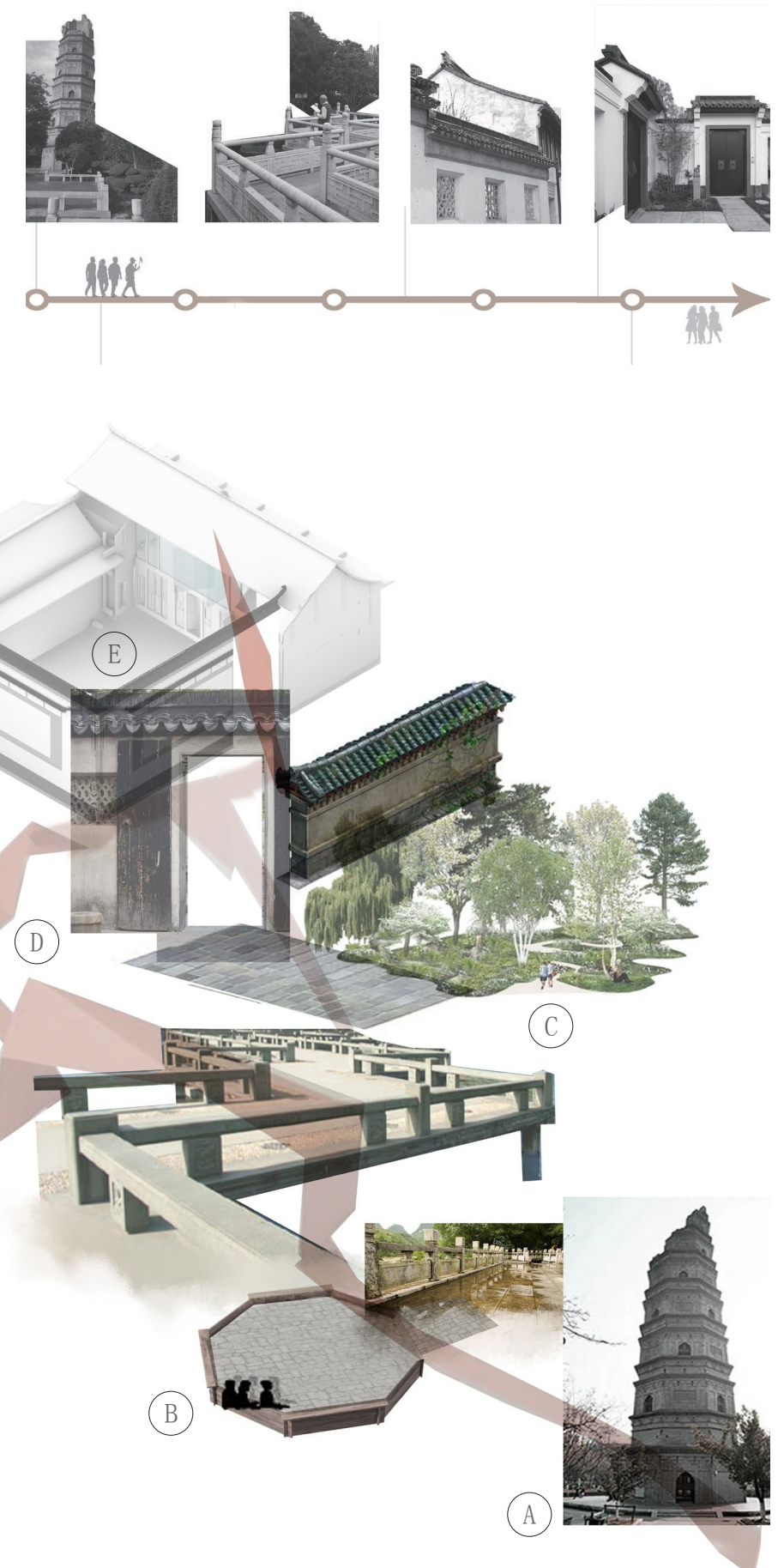


When referring the traditional Chinese culture, morning tea culture could not be missed. During each weekends or holidays, local people will begin their morning tea activity. Generally, the morning tea will be joined by a whole family or a group of good friends. In Chinese idea, morning tea is an enjoyable thing which can spend leisure time and relax selves thoroughly.

VISITNG SEQUENCE:

Historical site--ancient bridge--woods--front entrance--tea joy

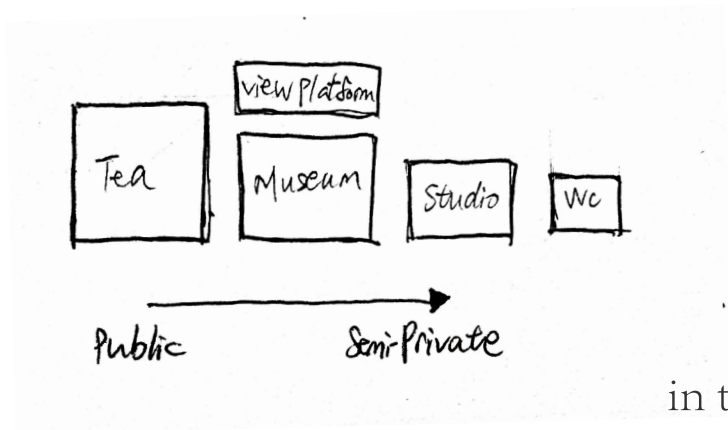
The design is not only about teahouse itself, but also the outside bridge, which is the connection between teahouse and pagoda. The “sequence” of visiting route helps the transition of space and program design, and the connection between cultures



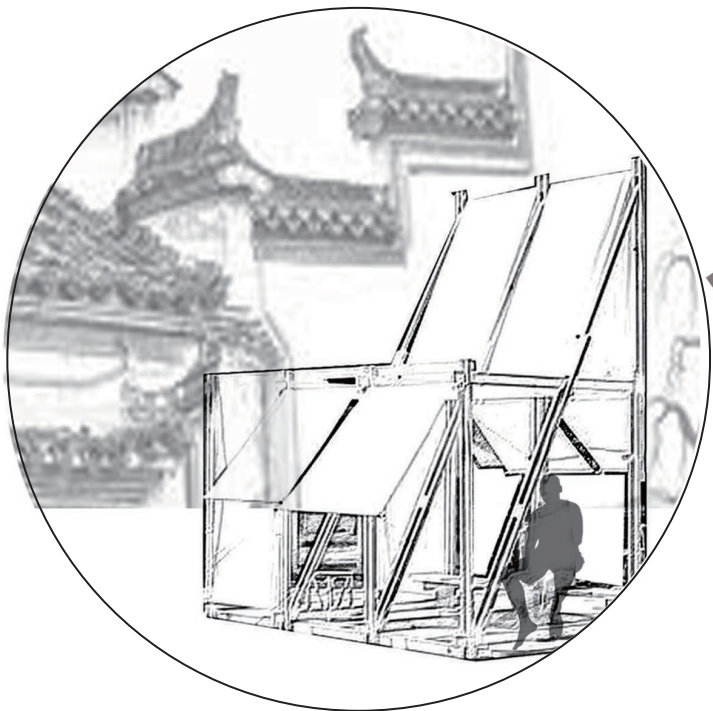
The sequence contains several important spaces (stops), each one possess a unique program. All these link together, break the rules of traditional room, also hallway.

LINKS IN THE SEQUENCE

programs & space to stop



in the courtyard (display)



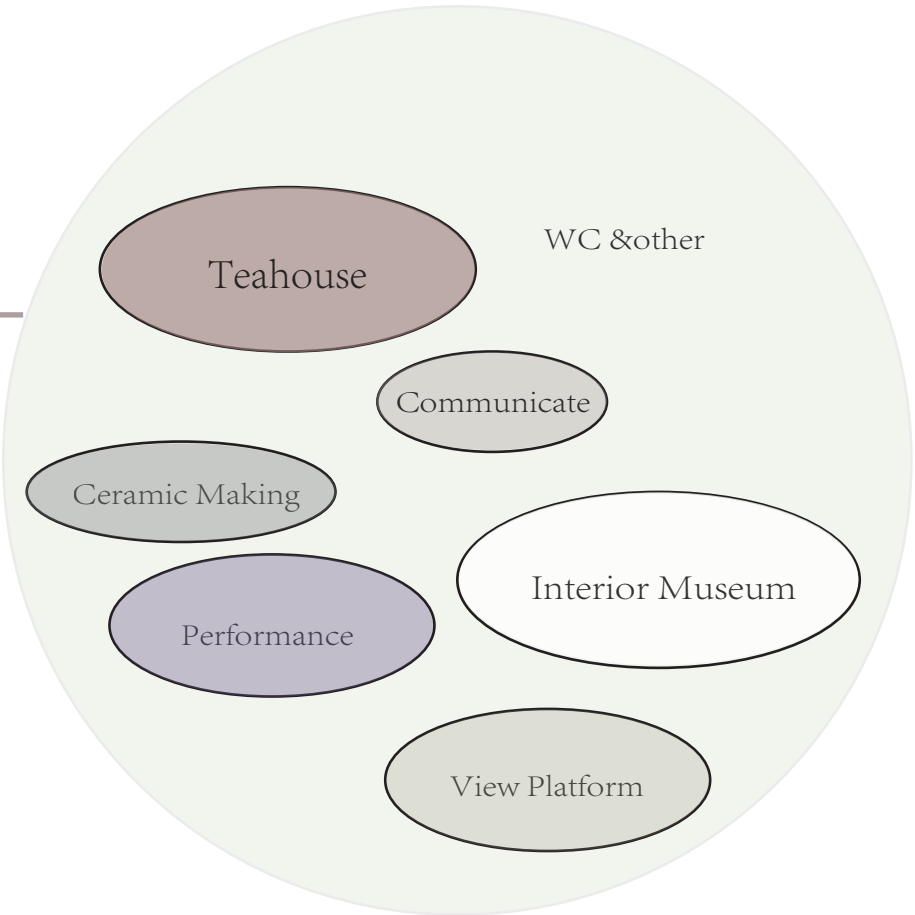
front entrance of teahouse



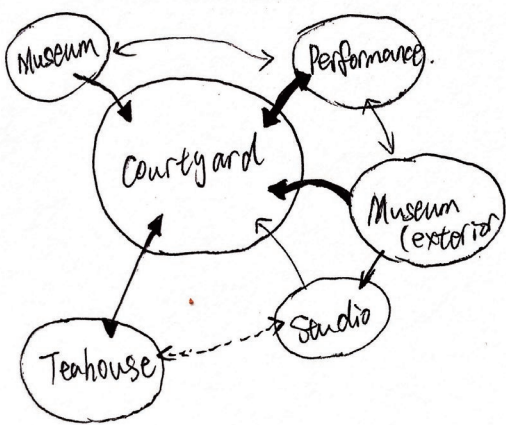
on the bridge (display)



in front of the pagoda



Interior Space

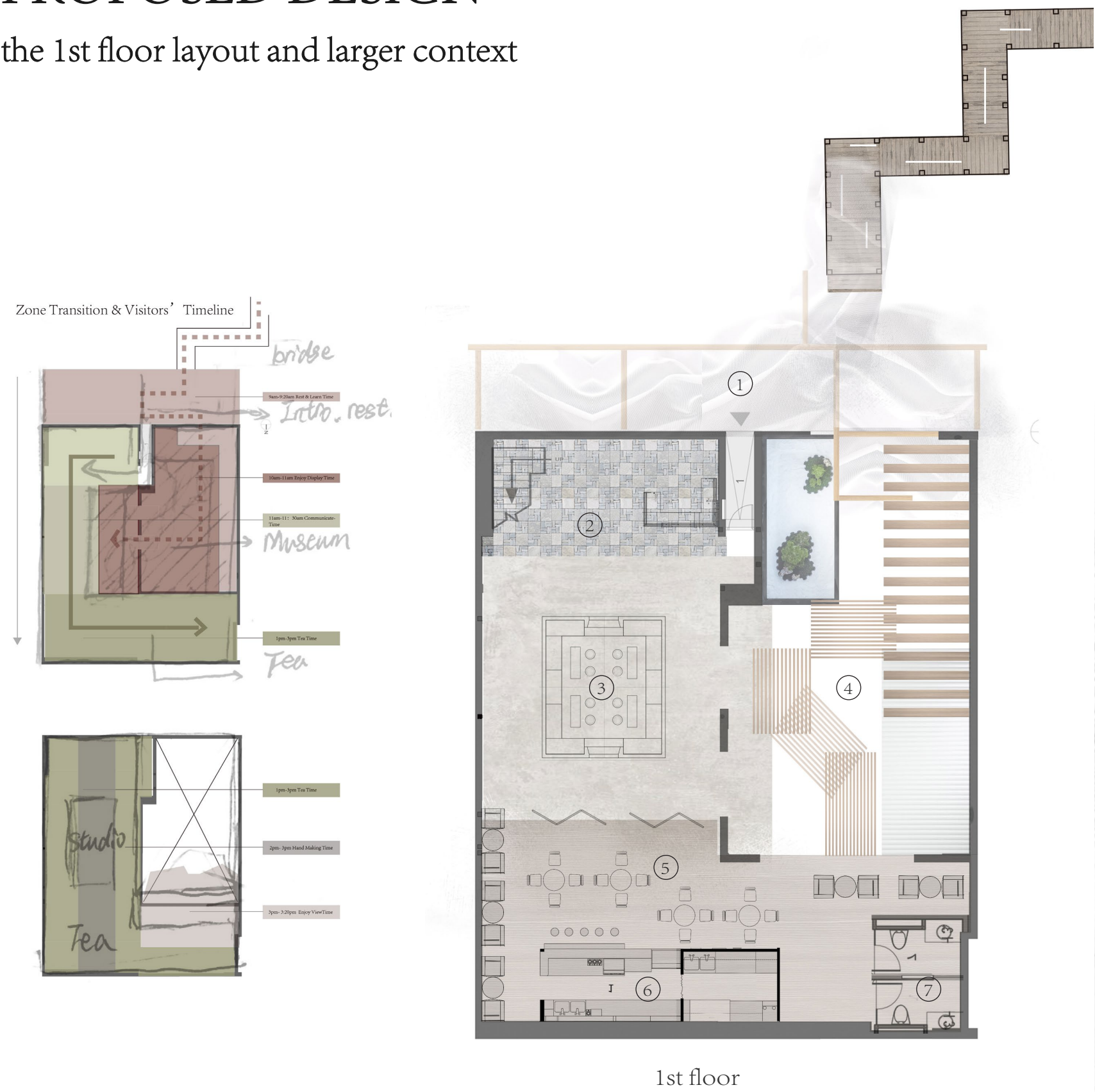


Program Size.



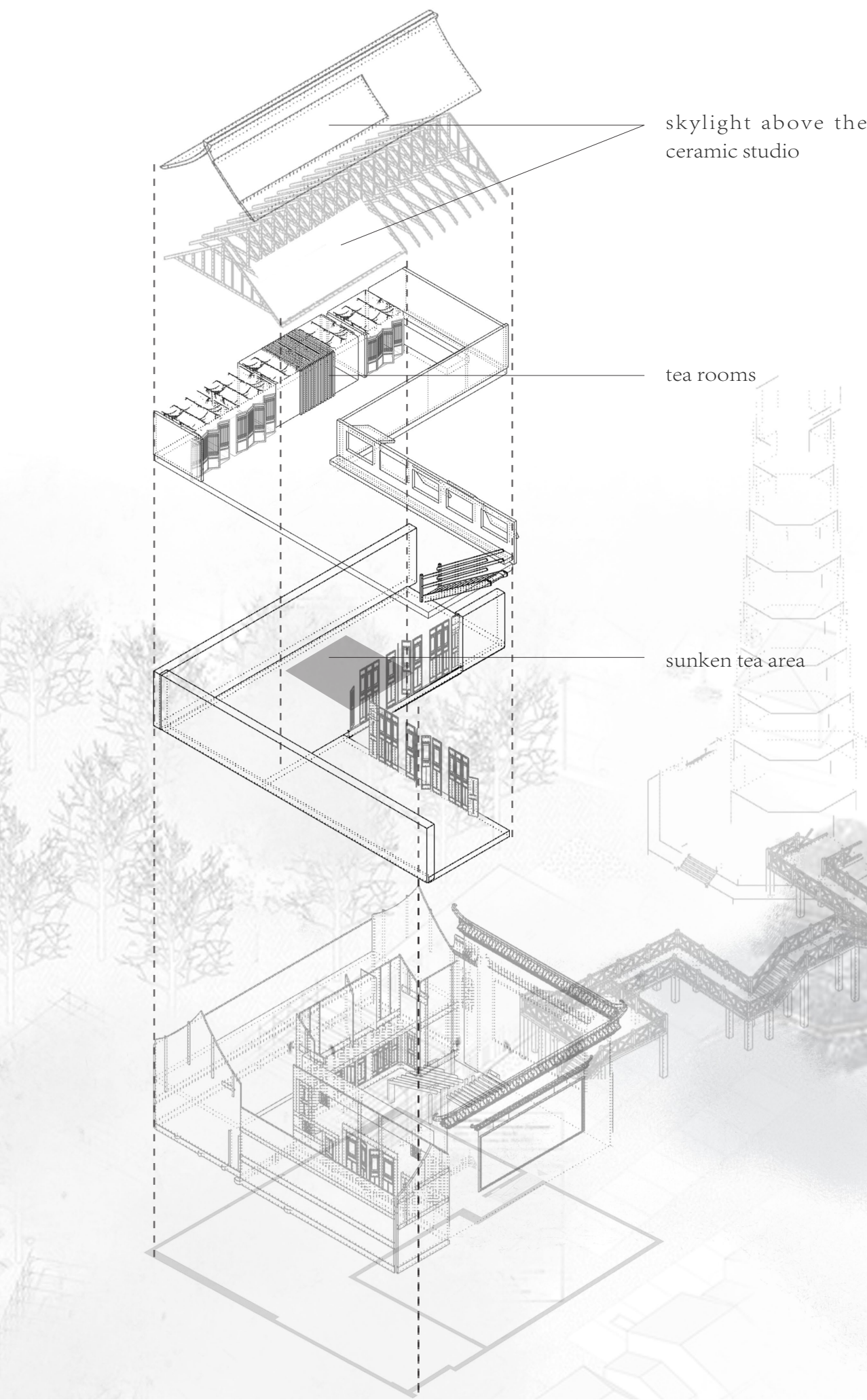
PROPOSED DESIGN

the 1st floor layout and larger context



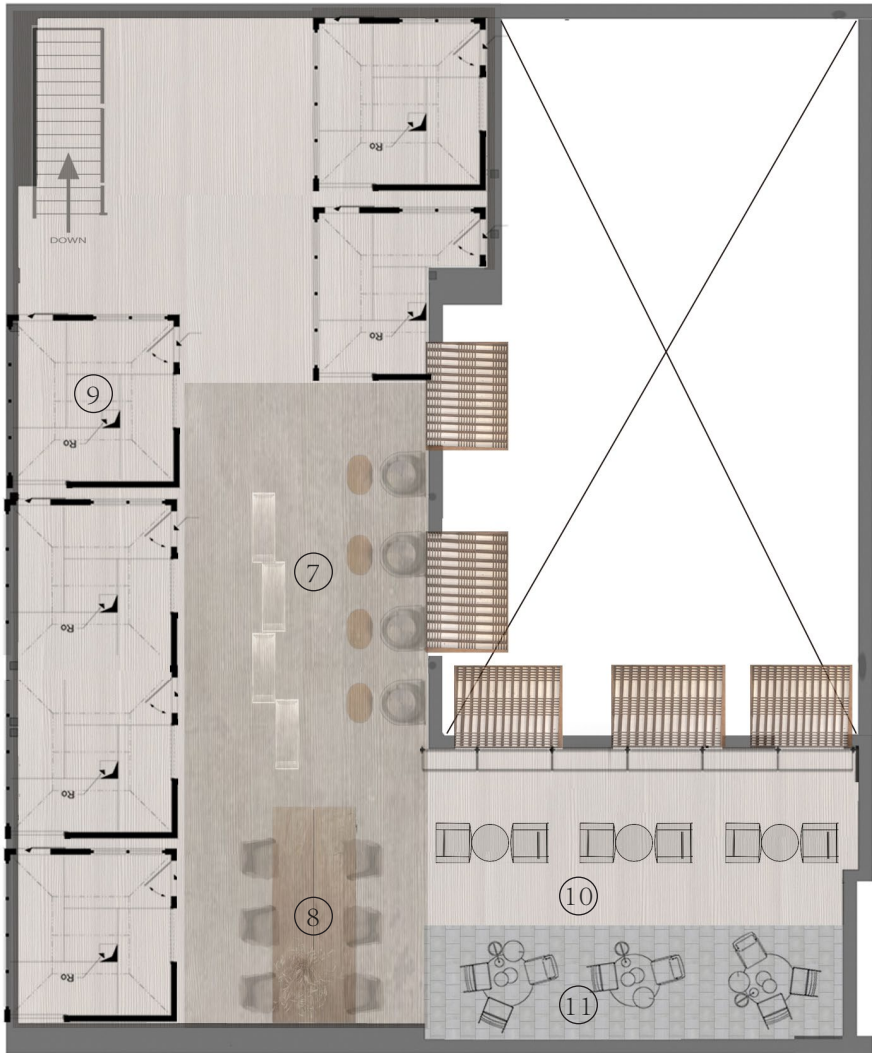
- Display & Rest Area
- Museum Area
- Lobby Area
- Public & Community Area
- Tea Area
- View Platform Area
- Studio Area
- Tea Area

- ① front rest space
- ② reception & stair
- ③ tea & chat area
- ④ courtyard & display
- ⑤ drink & dimsum area
- ⑥ WC



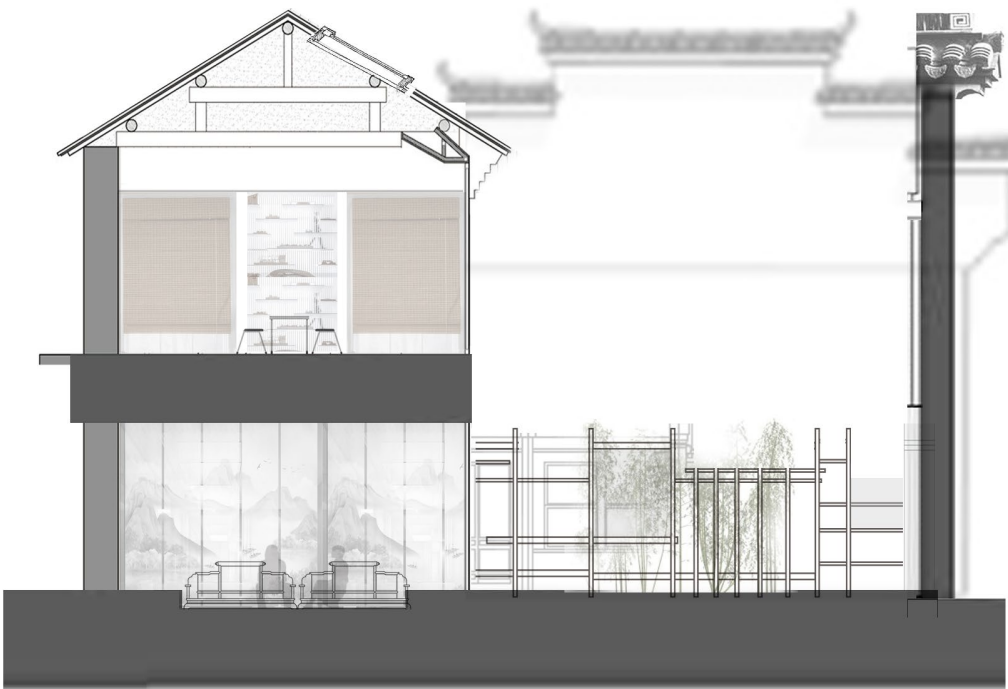
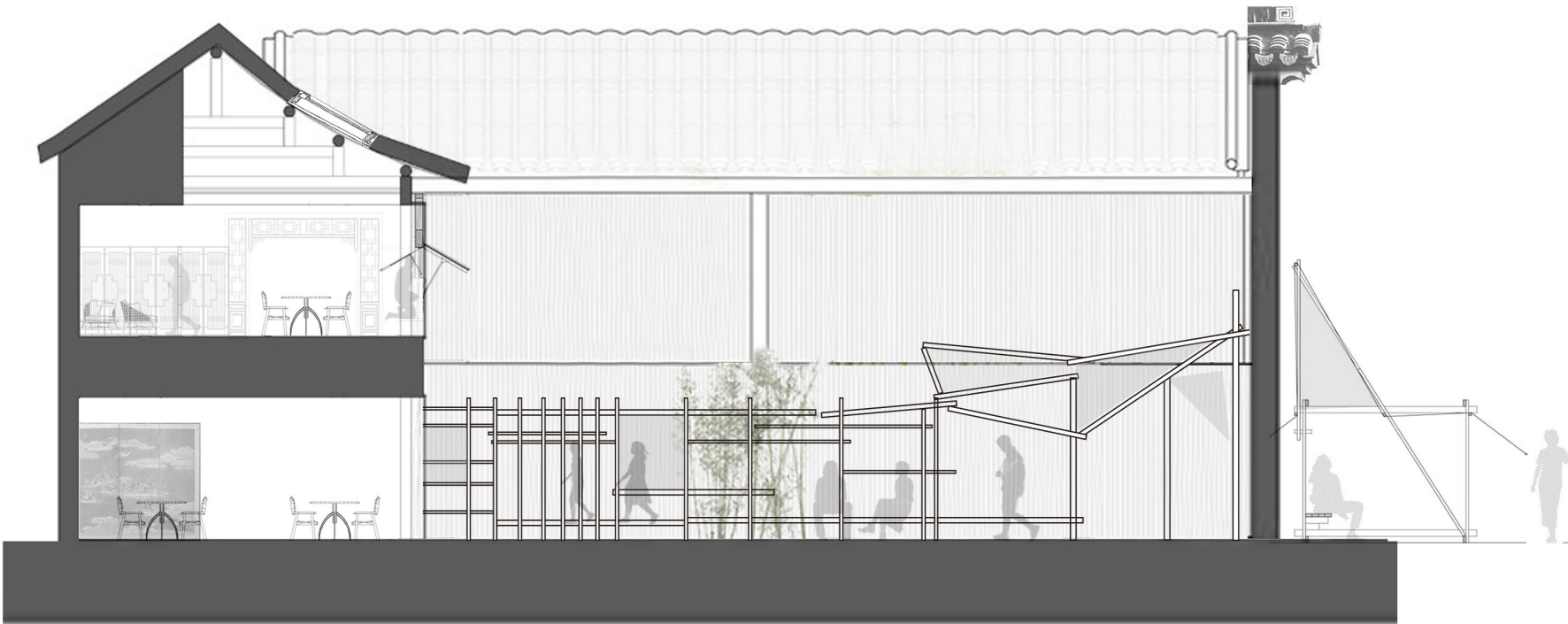
PROPOSED DESIGN

the 2nd floor layout and sections



2nd floor

- ⑦ pottery display & electric wheels
- ⑧ preparation area
- ⑨ tea room
- ⑩ tea & chat area
- ⑪ view & reading area

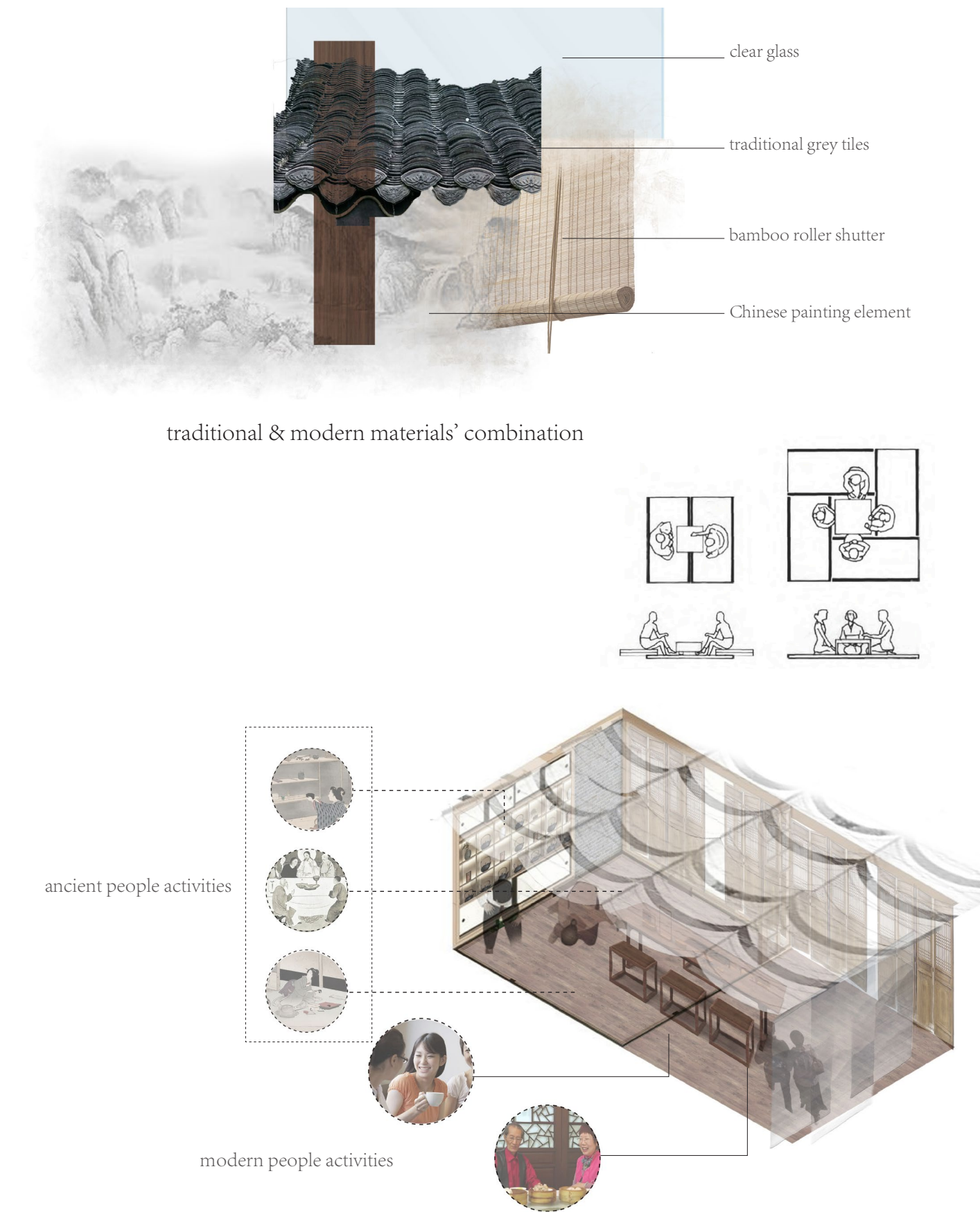


Courtyard was initially a empty space with greens, but my idea is to let people have more fun and stay for longer time in it. So the wood structure system there let people go through or have a rest inside.

Making the connection between the interior and exterior courtyard stronger is one of my goal.

DETAIL DESIGN

Tea room



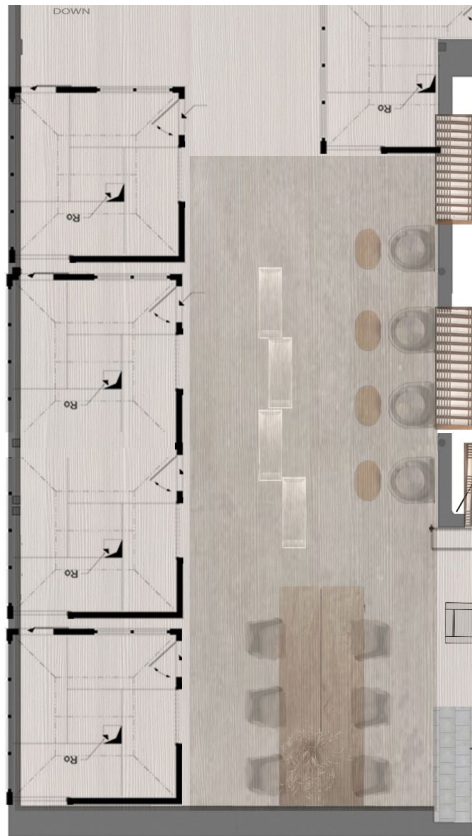
Adding pagoda elements inside, like the using of grey tiles, the polygon shape window lattice, and Chinese traditional folding screen. The soft ceiling aims to bring "fresh" air inside, and when visitors look up, they would see Chinese painting pattern on it.

DETAIL DESIGN

Ceramic making studio --- Hallway between tea rooms

Using the similar language in the courtyard to design the studio space. No physical & solid walls but using minimal structures to define the hallway space.

The wood structure supports the shelves and working desk. Visitors could take time here to design and work on their own ceramic art.



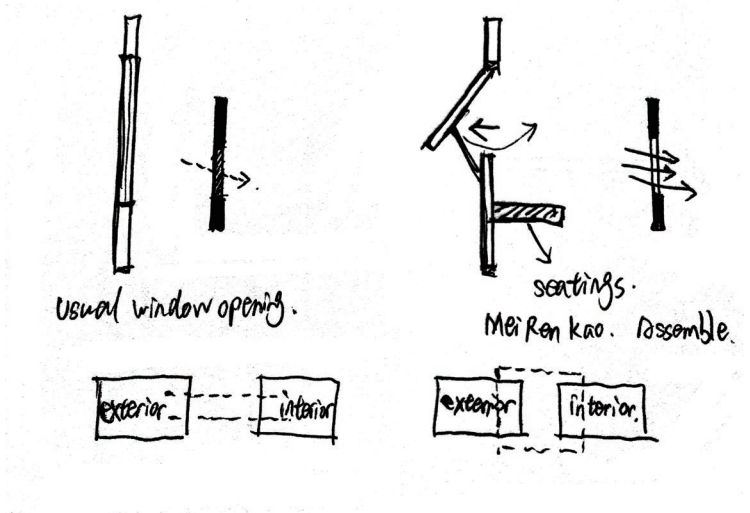
DESIGN STRATEGY---Wall Shutter System



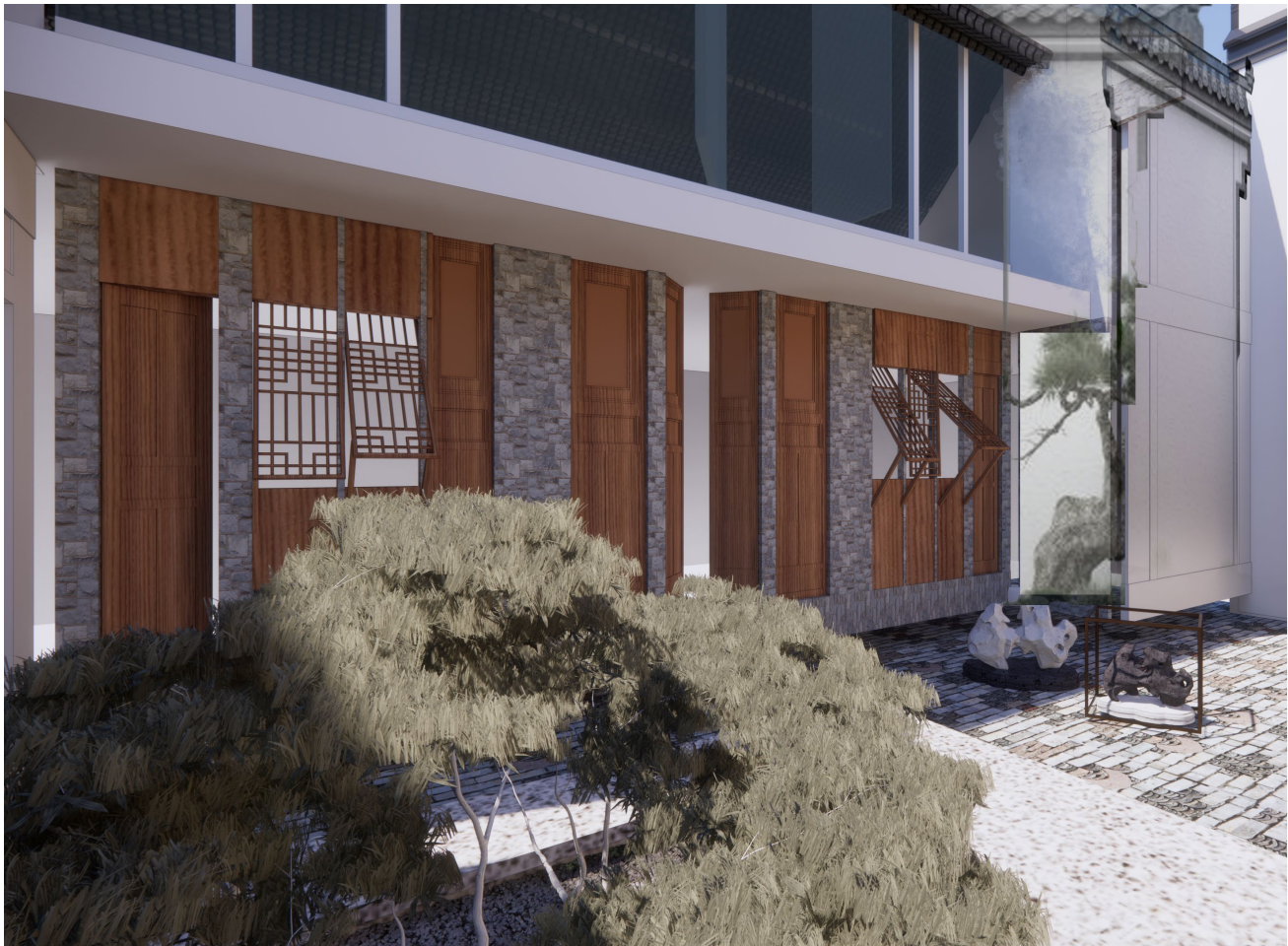
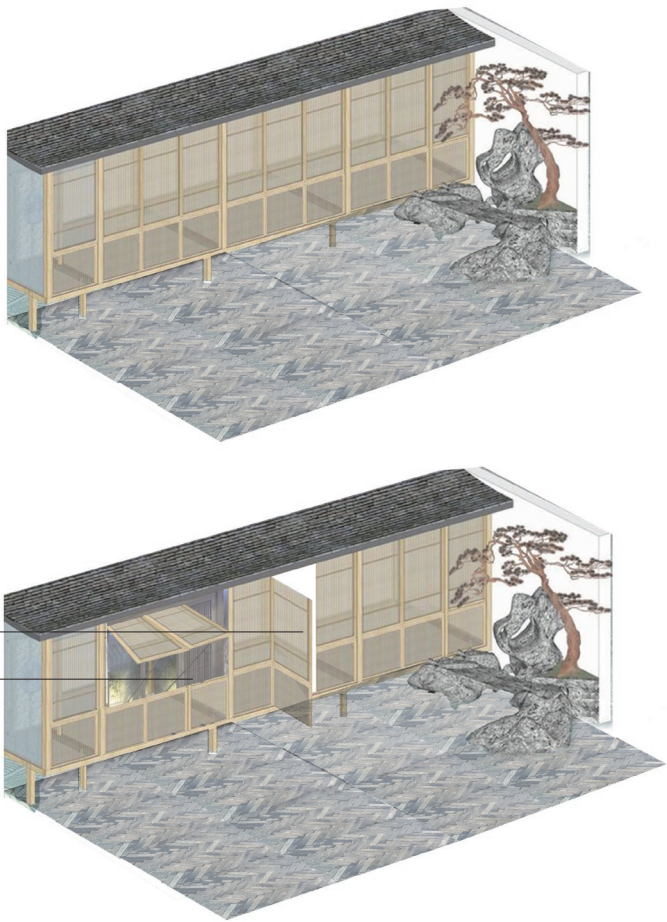
traditional Chinese folding doors



supported by simple oblique brace and opened horizontally

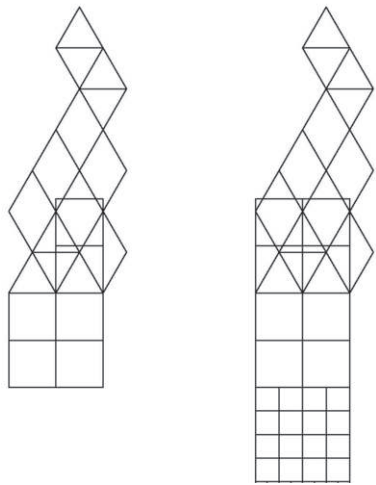


Combine the traditional folding door idea with the “open horizontally” idea. The opening and closing of the door forms a rich courtyard space in the square, which is suitable for moving and static.



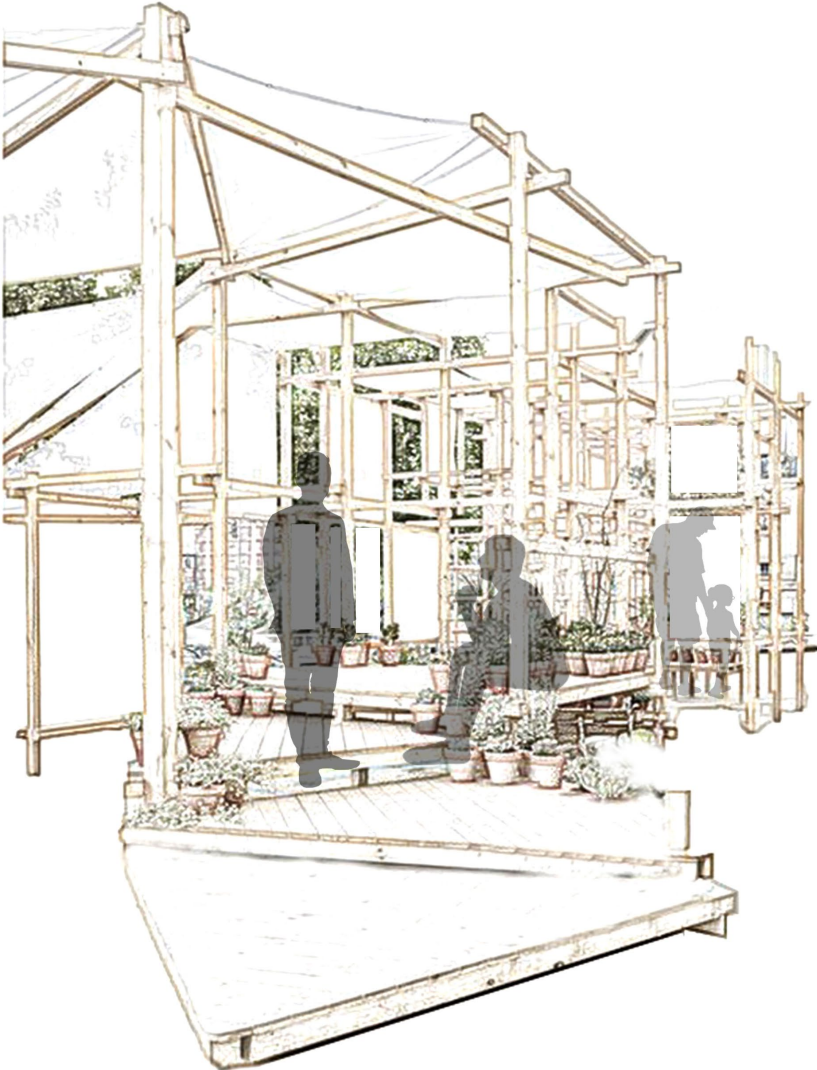
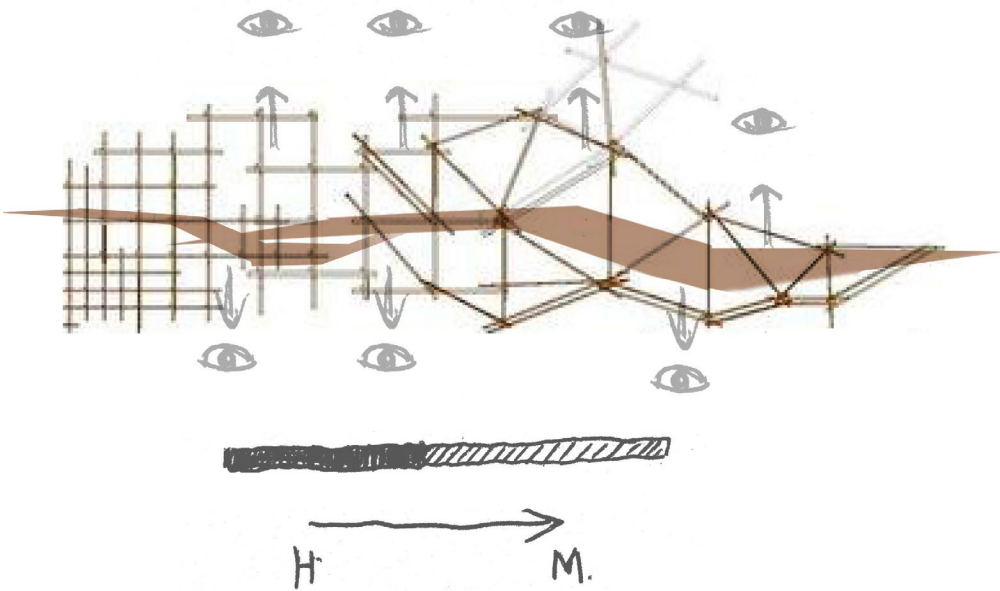
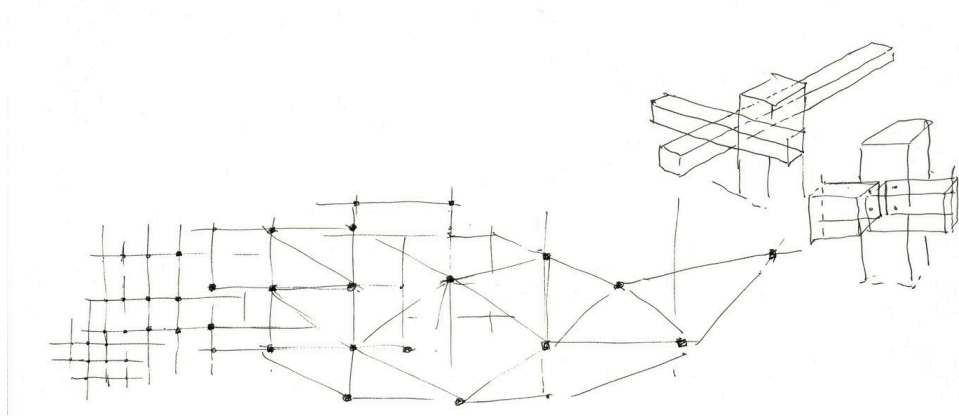
Courtyard System

Hallway into a space to stop



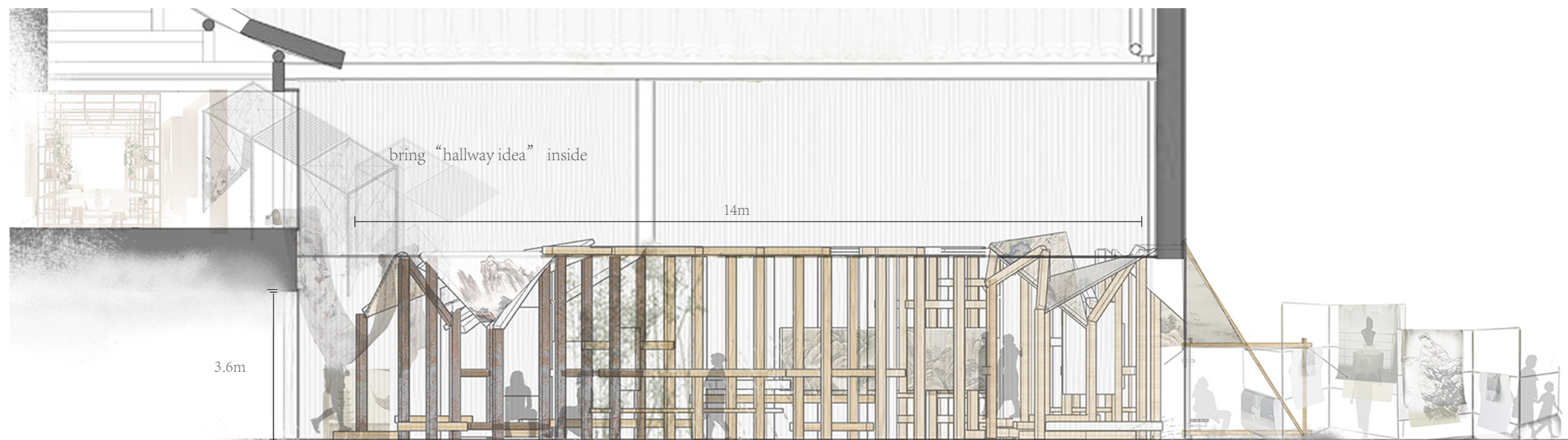
A transition of space

The space is like a bridge between outside and inside space. Visitors could choose to sit inside or just go through it. By using translucent material to cover some part of the space, it makes sure the space has a bit of privacy but also connection with the outside space.

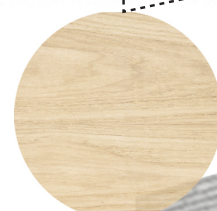


concept collage

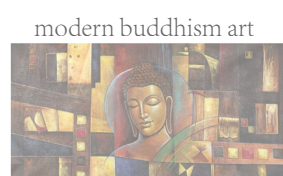




copper metal texture



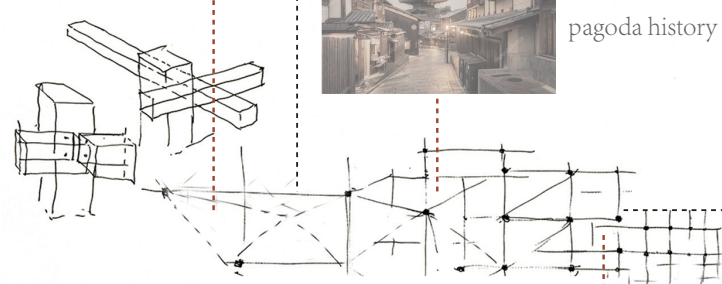
Chinese wooden bamboo



modern buddhism art



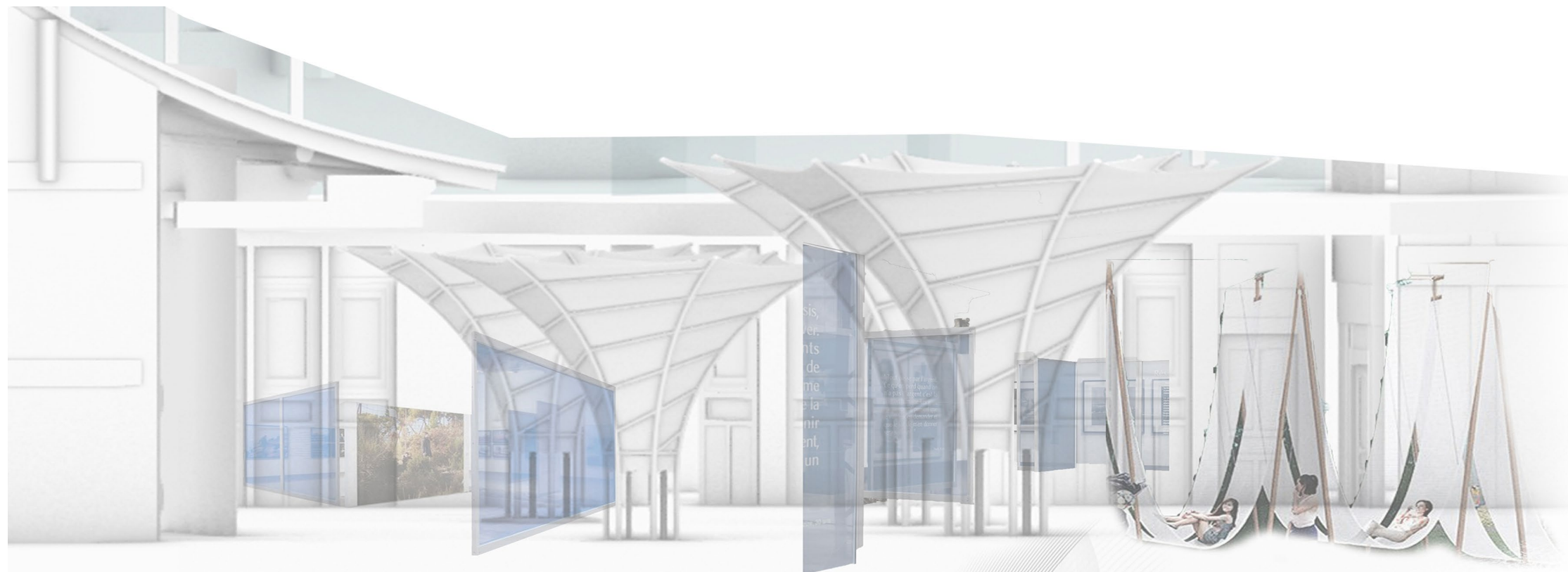
pagoda history



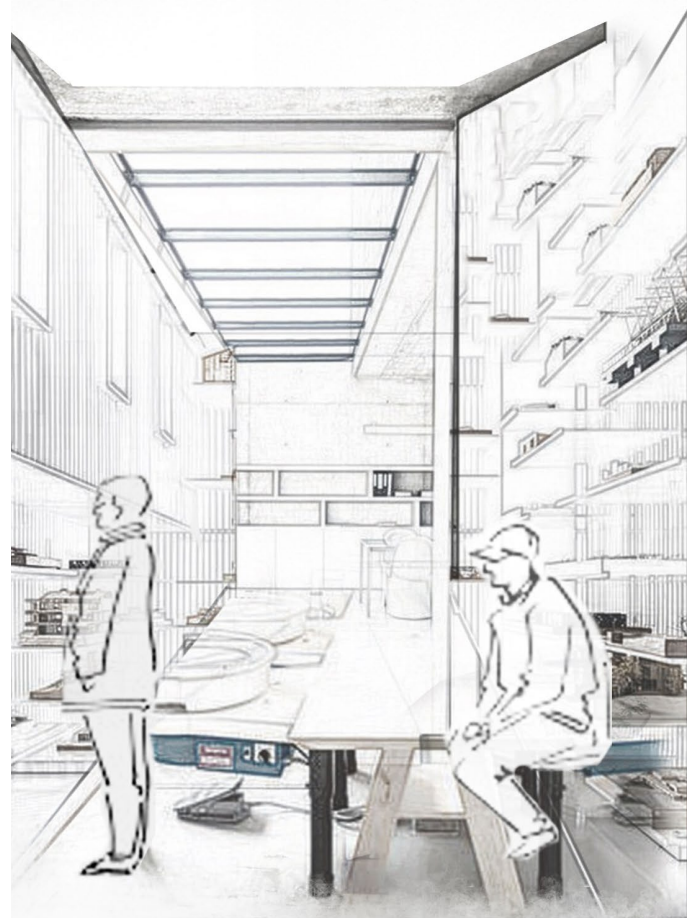
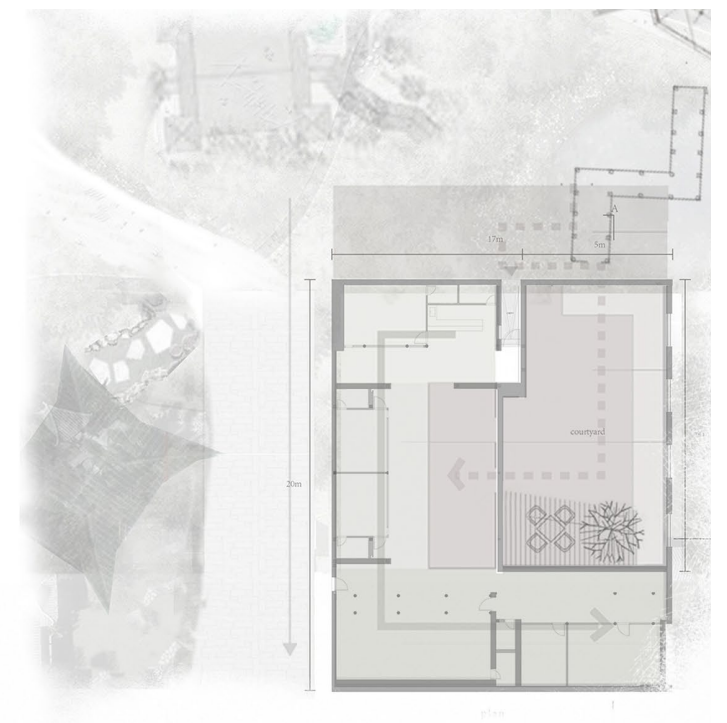
Chinese traditional painting display

When visitors go through the hallway, the change of the space and materials give them different feelings. The space which is close to the bridge and pagoda looks more traditional, using wooden bamboo and traditional paintings are displayed here. When approaching the teahouse, the material is changed to copper metal, and modern arts are displayed here.





courtyard space (display area)



ceramic studio area (hallway space with skylight above)

Treat long “hallway” as potential space to let people stop and rest as “room” does. -----(turn courtyard into display area, turn hallway between tearooms into ceramic making studio)

