

HSIEH , YI • TING
2011-2021

INTERIOR DESIGN

PORTFOLIO



AURA
2021



MICRO-CITY
2012



VOICE.
2011



RESIDENCE D.
2016



SINGLE UNIT
2017



RESIDENCE L.
2018

ACADEMIC

PROFESSIONAL

An architectural rendering of a modern medical examination room. The room features a large, light-colored examination table on the left, a curved wooden desk with a computer monitor and stool on the right, and a sink area with a window in the background. The walls are made of vertical wooden slats, and the ceiling has a large skylight. A potted plant hangs from the ceiling on the right. The word "AURA" is overlaid in the center.

AURA

Primery Clinic Project

Chicago, Illinois

2021 |

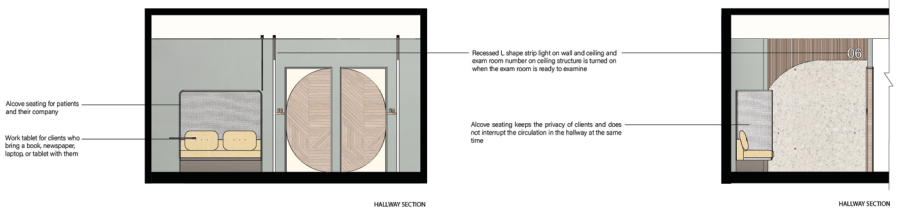
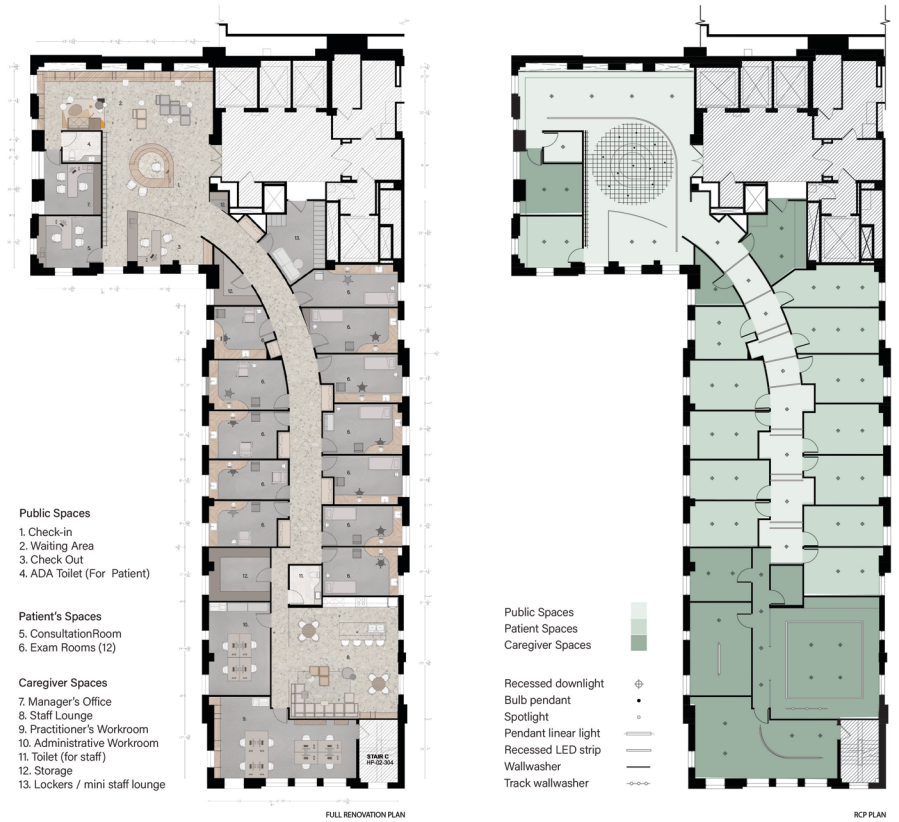
Full Renovation + Partial Renovation
Group Project

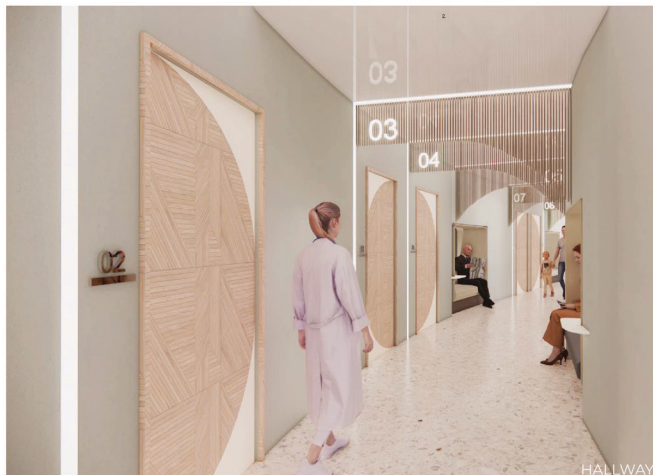


AURA primary care clinic is located in Chicago, Illinois. It focuses on creating a stressless medical experience, preventative care and sees patients by appointment only. The caregivers know the patient's family histories and manage their wellness. To provide the client a comprehensive medical experience and enjoy the pleasant aura in the clinic.

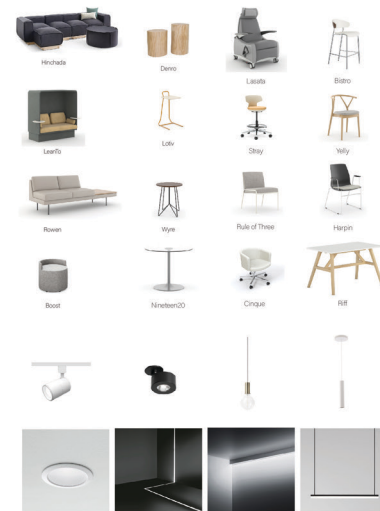
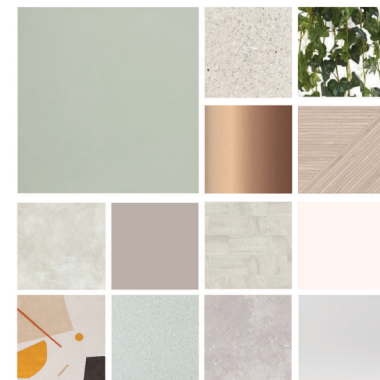
The concept Aura is oriented to the delicate full-scale experience that allows clients to immerse themselves in the comfortable and relaxed surroundings. To encounter the spa-like feel and amenities seen in hospitality are instrumental in creating a sense of "homefulness" and well-being. The design showcases the soft tone with the materials to correspond to the clinic's exclusive experience and give clients a hospitable atmosphere. The aims are to build a warm and affectionate medical environment to ease patients' discomfort and combine technology to assist physicians in working efficiently.

A clean and straightforward route separates clients and the faculty's entrance to create a seamless flow that clients can easily find the direction and chill in the waiting area. Within the technology and the guiding lighting fixture, to integrate an intimate and innovative clinical environment. The curve counter made with wood and frosted glass welcomes clients with a silky greeting; moreover, clients can decide to check-in by themselves from the digital devices or ask staff to assist with, allow different requirements from various clients. The manager's office is located close to the waiting area for the immediate service for clients and enables the manager to grasp the clinic's overall situation. The wooden bookcase/seatings system in the waiting area is designed for the flexibility that allows the clinic to decide how many seats are providing. It can easily follow social distancing if needed, and the principle also follows selection of the sofa. The modular sofa is convenient for the clinic to change the arrangement to respond to the occasion or requirement by time. Living plants bring an energetic vibe into the clinic; the plants' variety will also serve the space with novelty.





MATERIAL/ FURNITURE/ LIGHTING

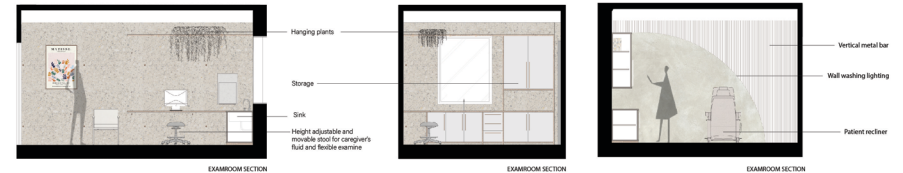
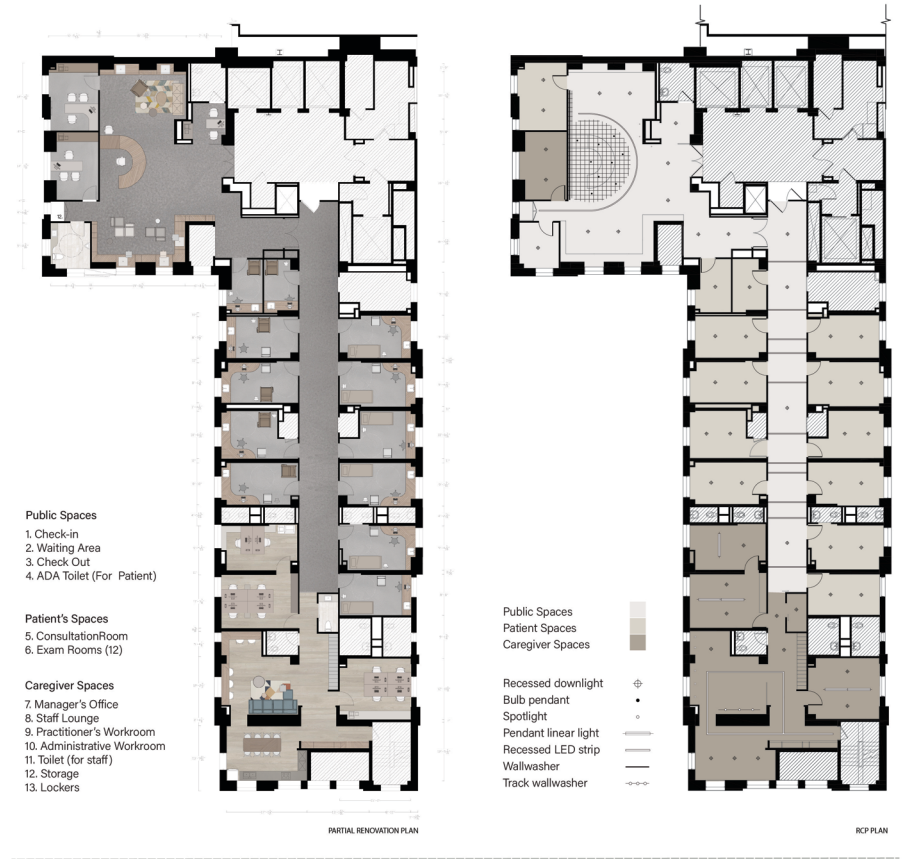




AURA primary care clinic is located in Chicago, Illinois. It focuses on creating a stressless medical experience, preventative care and sees patients by appointment only. The caregivers know the patient's family histories and manage their wellness. To provide the client a comprehensive medical experience and enjoy the pleasant aura in the clinic.

The concept Aura is oriented to the delicate full-scale experience that allows clients to immerse themselves in the comfortable and relaxed surroundings. To encounter the spa-like feel and amenities seen in hospitality are instrumental in creating a sense of "homefulness" and well-being. The design showcases the soft tone with the materials to correspond to the clinic's exclusive experience and give clients a hospitable atmosphere. The aims are to build a warm and affectionate medical environment to ease patients' discomfort and combine technology to assist physicians in working efficiently.

A clean and straightforward route separates clients and the faculty's entrance to create a seamless flow that clients can easily find the direction and chill in the waiting area. Within the technology and the guiding lighting fixture, to integrate an intimate and innovative clinical environment. The curve counter made with wood and frosted glass welcomes clients with a silky greeting; moreover, clients can decide to check-in by themselves from the digital devices or ask staff to assist with, allow different requirements from various clients. The manager's office is located close to the waiting area for the immediate service for clients and enables the manager to grasp the clinic's overall situation. The wooden bookcase/seatings system in the waiting area is designed for the flexibility that allows the clinic to decide how many seats are providing. It can easily follow social distancing if needed, and the principle also follows selection of the sofa. The modular sofa is convenient for the clinic to change the arrangement to respond to the occasion or requirement by time. Living plants bring an energetic vibe into the clinic; the plants' variety will also serve the space with novelty.





WAITING AREA



HALL WAY

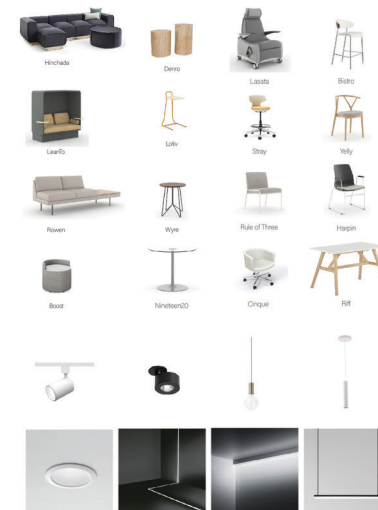
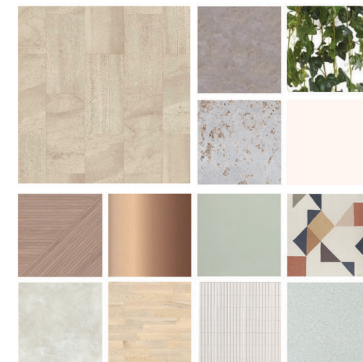


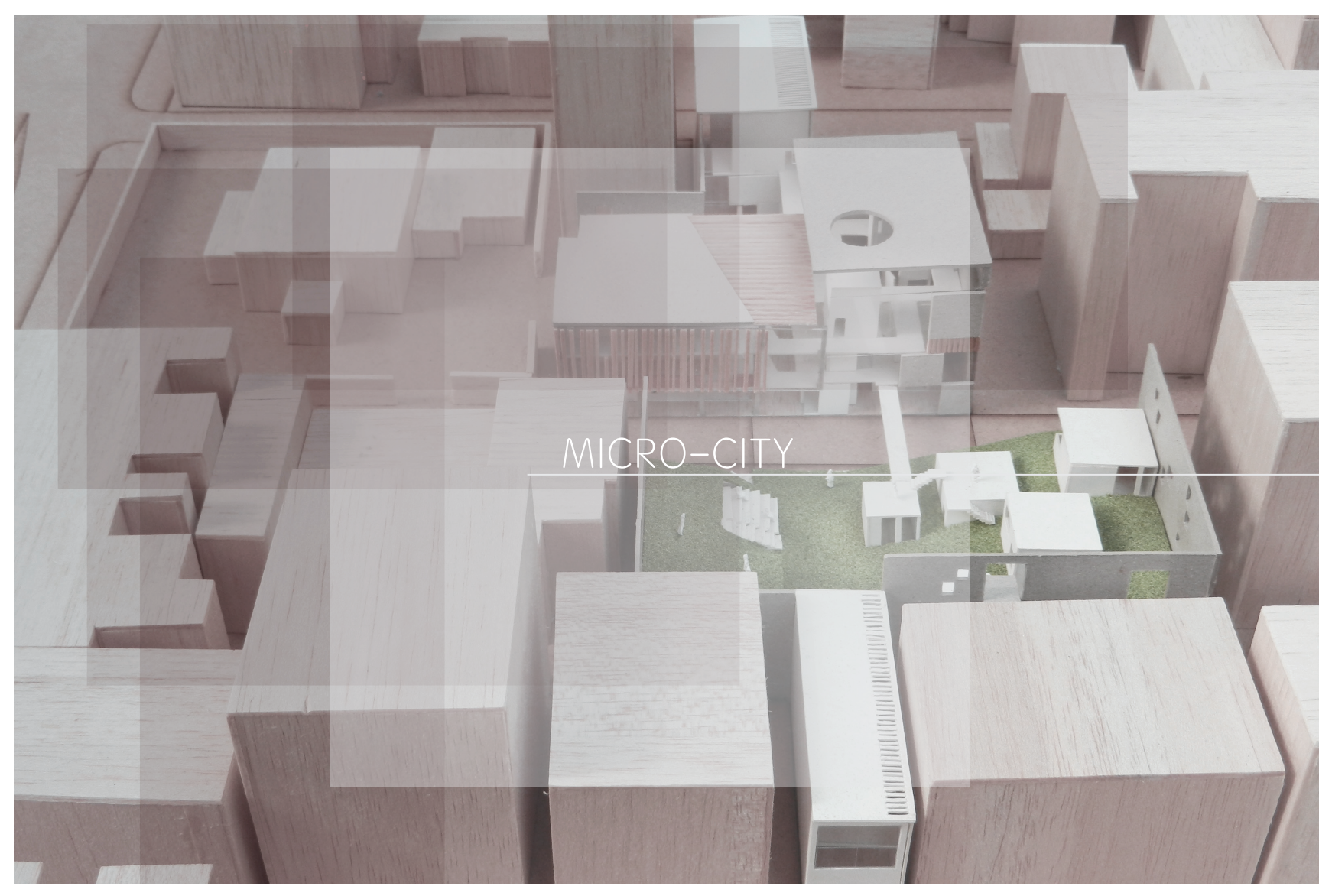
EMPLOYEE LOUNGE



EXAM ROOM

MATERIAL/ FURNITURE/ LIGHTING



An architectural model of a micro-city, constructed from light-colored wood blocks. The model features a dense arrangement of rectangular blocks of varying heights, creating a complex urban landscape. A central area is covered in green grass, with a small white structure and a few tiny human figures. A semi-transparent white rectangular box is overlaid on the model, containing the text "MICRO-CITY".

MICRO-CITY

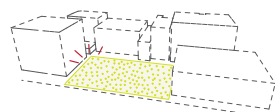
Graduation Project

Taipei, Taiwan | 1920 m² | 2012 |



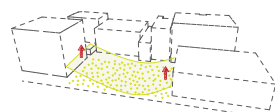
The site is situated at the central of Taipei city. The neighborhood represents a typical urban pattern of the early developed urban area in Taipei, which reveals two different appearances of the building. You can find mega-scaled department store buildings standing on the main streets, turn your eyes to the back alleys, there are all residential buildings that are less than five-stories.

The site is located at the area where the old and the new elements coexist, the buildings are old where are in contrast with the trendy stores in the building. The cinema next to the site was renovated from a historic site that had been the American Embassy. It is a successful renovation, people are attracted to the area by it's elegant atmosphere, and for this reason, It has formed a very special business district. Many small business as well as designer shops are operating, restaurants offering foreign cuisine are lined up along the alleys. Young people come here for shopping and the elderly come here to relish the nostalgia it exudes.

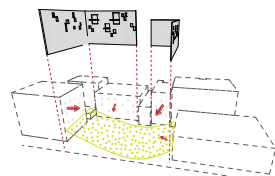


Discover

In such a crowded and dense city like Taipei, we found a flat green that is idled for a long time. This green leads us to contemplate the relationship between building and the environment. In order to preserve the green while implement the objective that we intend to give on the site, we reshape the green.



Lift



Interaction

MICRO-CITY

privacy

Artists' Residencial Area

identity

Cafe
Flower Studio
Clothes Studio
Furniture Studio
CD Shop
Lomo Shop

diversity

Artist Studio

speciality

Artistic Book Store

Openness

Open-air Gallery

INTENTION

Our proposition is to bring art into life. MICRO-CITY is a community based on the aggregate of artist studios. People can have interaction with art by being a part of the process of art creation through observation. Moreover, they can have contact with the artists. To enhance the overall integrity, we place in artists' residence, galleries, artistic shops, lecture rooms, cafes, an open-air cinema and an artistic bookstore. Our intention is to integrate art into people's daily life.

From the center of the site, we made an extension external that connects street blocks with the old buildings. Several small building masses are positioned on the green section, and the reshaped green surface cover the site with a plaza. Through the difference of ground levels, we were able to seamlessly connect the new building masses to the existing buildings. By doing so, we opened parts of the old buildings to build stronger connections in between.

educational
Lecture Room
Gallery

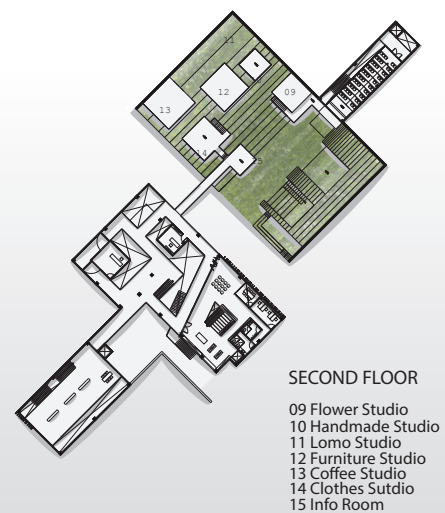
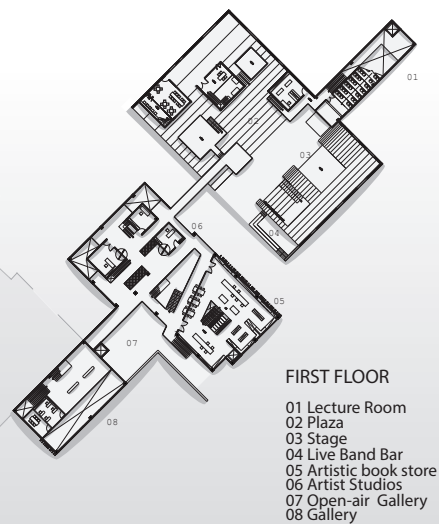
publicity
Plaza
Holiday Bazaar

enjoyment
Open-air Cinema

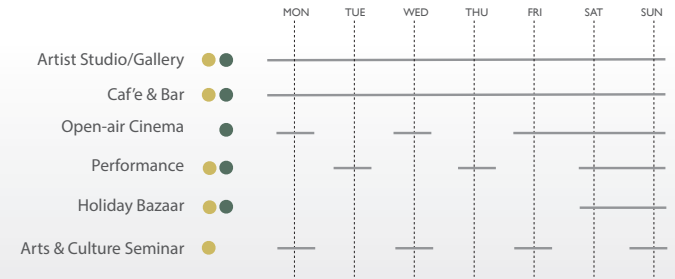
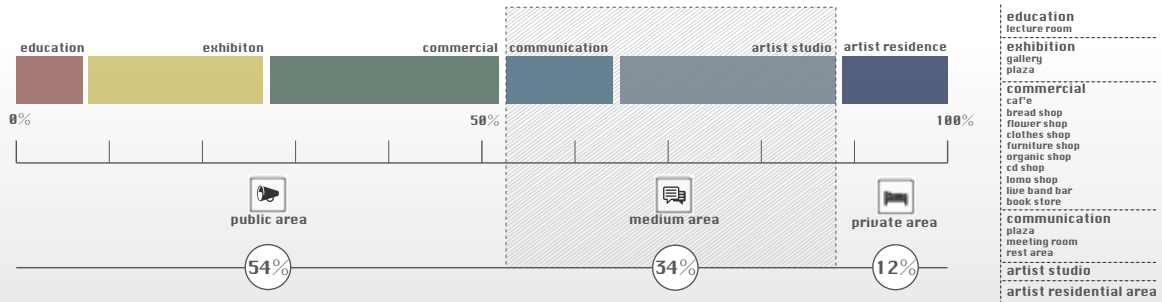
flexibility
Public Flat
Open-air Concept

entertainment
Live Band Bar





E
X





The green hidden in the hustle bustle city, it provides the space to gratify daily life with any character people can find in themselves, we intent on build an ideal community that people do not pursuit art but to interact with it.

MICRO-CITY



People can have interaction with art by being a part of the process of art creation through observation. Moreover, they can have contact with the artists. To enhance the overall integrity, we place in artists' residence, galleries, artistic shops, lecture rooms, cafes, an open-air cinema and an artistic bookstore.



VOICE.

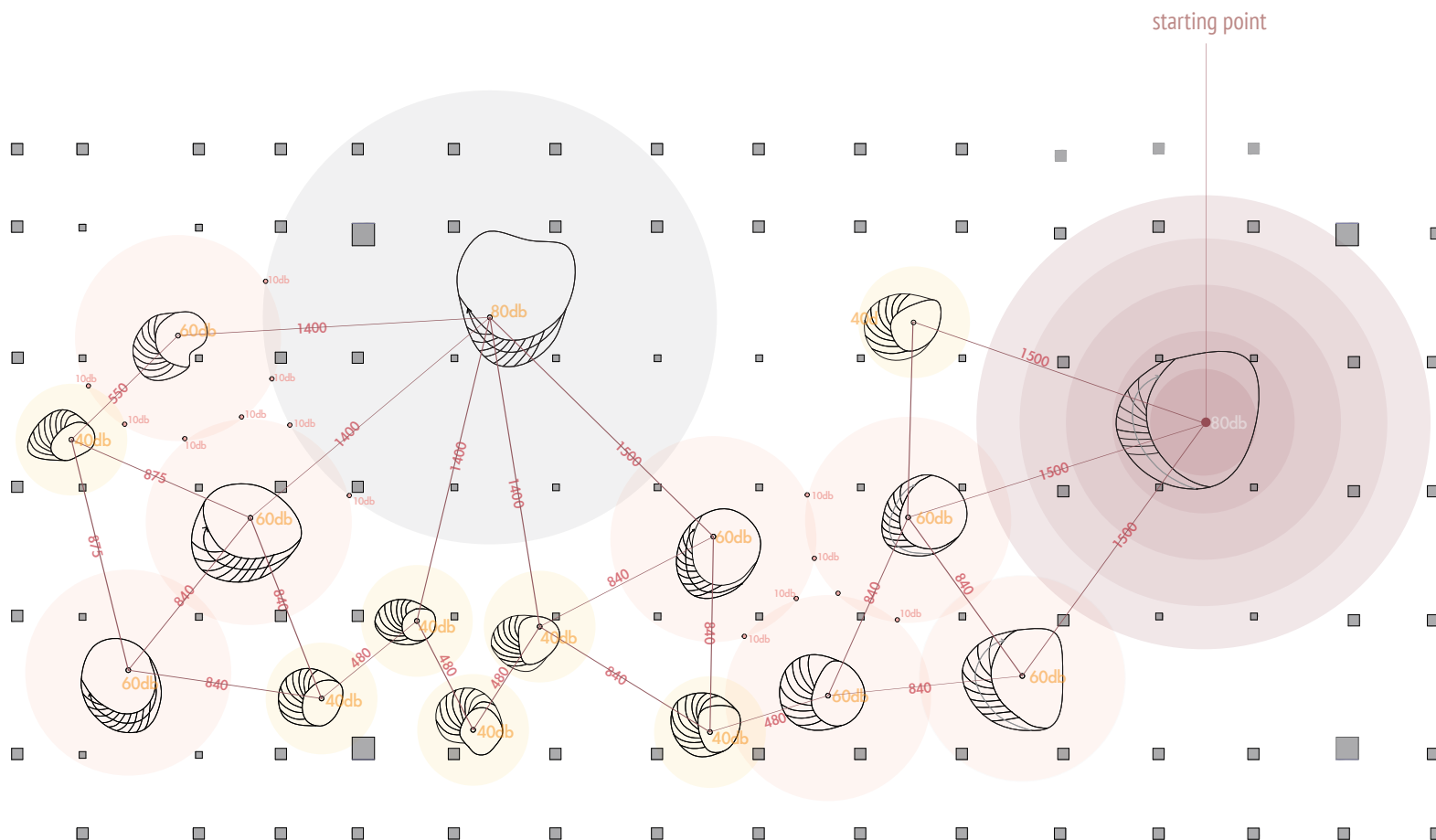
National Collegiate Spatial Design
Competition ; Coexist

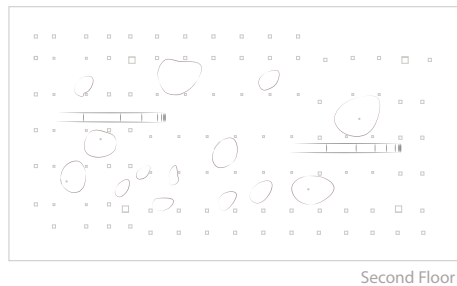
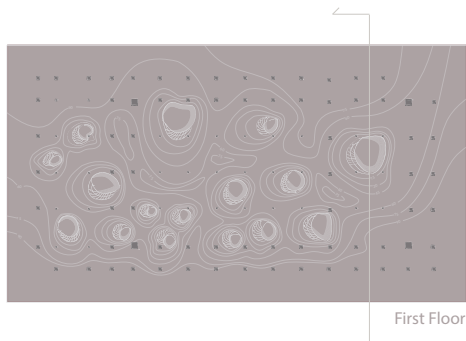
Taichung, Taiwan | 1000 m² | 2011 |

Group Project

The diagram shows a red line representing the public route from the station to the building. The route starts at the station, goes up the stairs, and then follows a path through the building's entrance area, which is marked with a red line. The building's entrance is located on the right side of the diagram, and the route leads directly to it.

The development of the plan is based on the corresponding distances which were inferred by the formula, and the limitation of the original columns in the site. To initiate from the starting point, extending to second sound field and the third one so on and so forth, all the sound fields gradually scatter over the site.

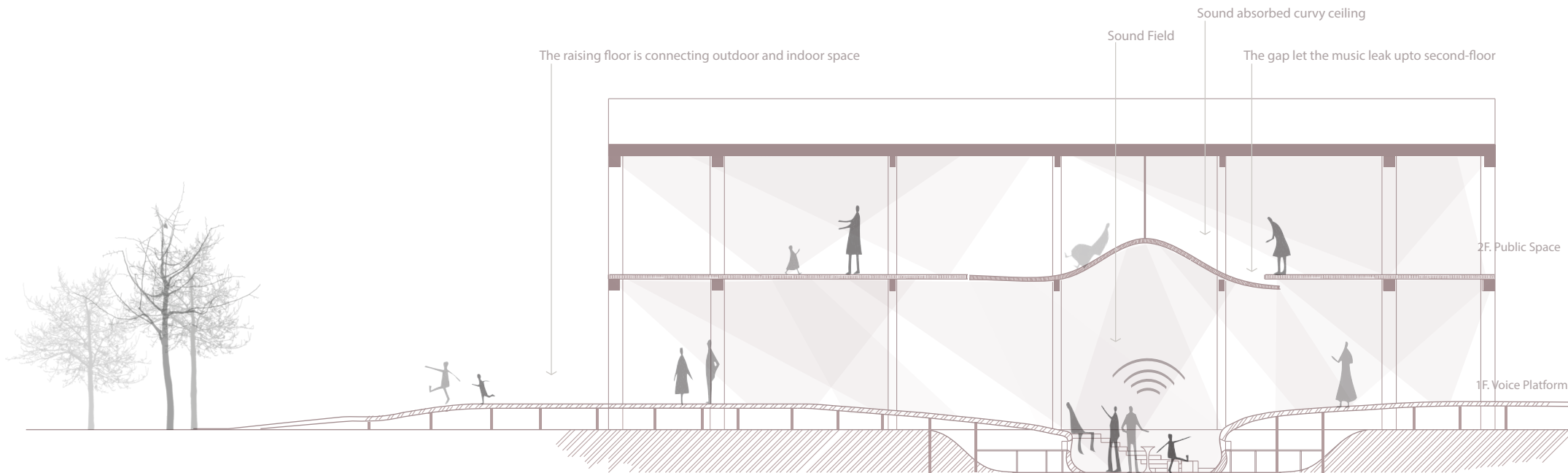




Slightly raise the floor from outdoor into the interior, digging up the ground at the voice points that were positioned, and forming the half-opened underground space as a sound field. People can use the device in the sound fields to play music.

The terrain is slowly fluctuant followed by the distribution of sound fields, to open the corresponding position second-floor slab, we place the new curvy ceiling which has a sound absorption effect.

All the curvy ceilings are fixed by the structure that extends from the third-floor slab, the curvy ceilings generate respective gaps between itself and the second-floor slab in different angles. People who are wandering on the second floor can sit and lie on the specific ceiling they like, and hearing the music came from downstairs.

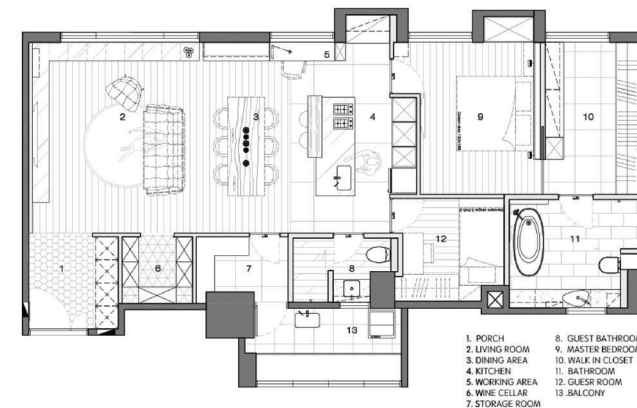


Architecture Is Music In Space, As It Were A Frozen Music

– Friedrich Wilhelm Joseph von Schelling



VOICE.



RESIDENCE D.

Interior Designer / Project Manager

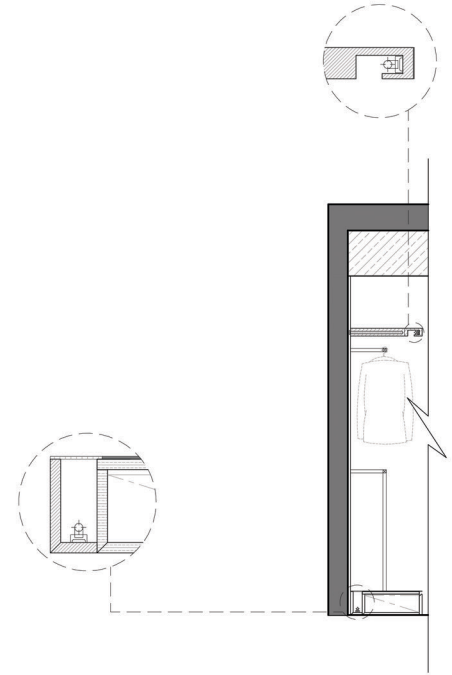
Taipei, Taiwan | 95 m² | 2016 |

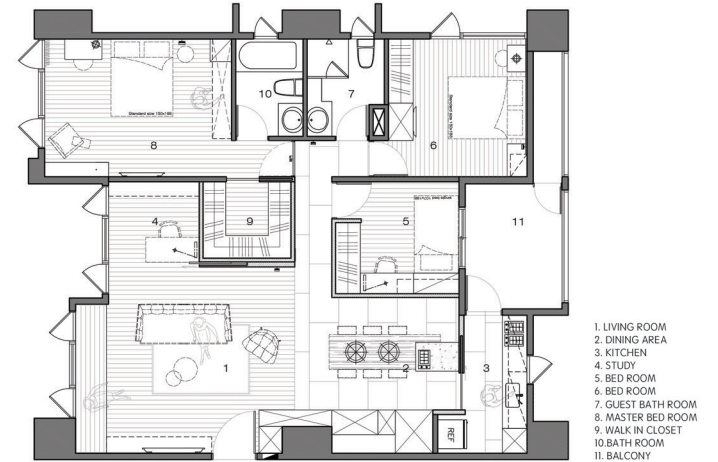
The previous owner of the apartment has kept three bedrooms and an enclosed kitchen in it, however, the functional requirement has changed. The new owner is a young couple who were lived in the United States and fascinated with Japanese culture. They have a collection of 100 pairs of shoes, over 400 bottles of wine, and several artworks by pop artist such as Takashi Marukami.

The owner demands plenty of spots to display their collection and a lot of space for the storage. To accomplish all the requirement and maintain maximal open space for them, the new layout provides an L shaped low drawer which can display the artworks on it but also storage items. Beside the drawer are bookshelves and the working area. Near the front door is deepened shoe cabinet. Along the wall are the wine cellar, storeroom, and the guest bathroom. Hidden doors are aligning with the wall to display artwork.









RESIDENCE L.

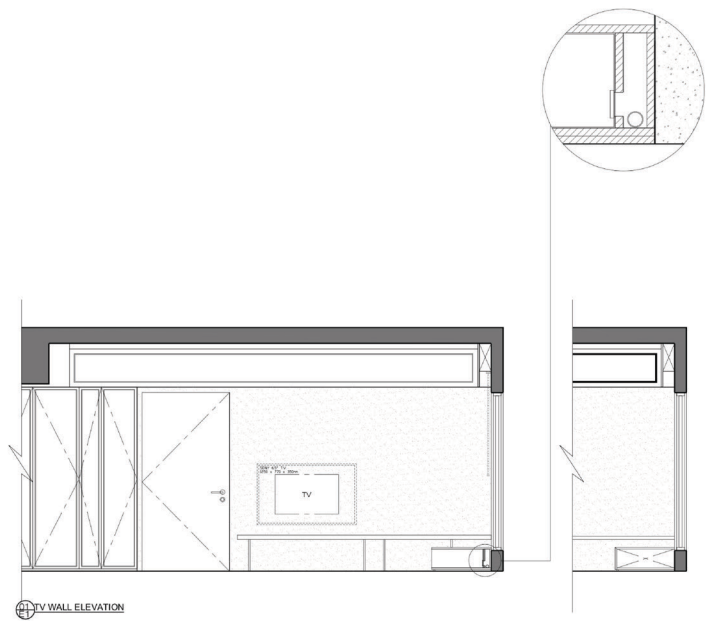
Interior Designer / Project Manager

New Taipei, Taiwan | 130 m² | 2018 |

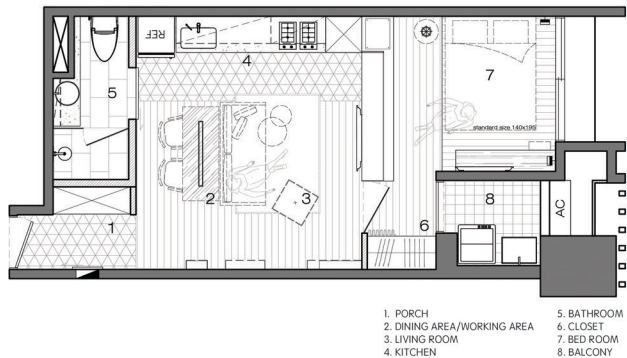
The apartment is owned by a family who lives with three dogs and two cats, both the spouses are an animal lover. They want to build an animal-friendly environment, thus, the walls are painted in a special coating which is easy to clean. All the piles are made by stainless steel and the sloping shelves fixed on the wall of the master room is designed for cats to jump on.

The original layout was included four bedrooms and a big kitchen; however, it does not fit with the requirement. The new layout removed one bedroom and replace with a study, a walk-in closet, and enlarge the living room area. The kitchen area and another bed room are reduced to accomplish a bigger dining room with an island bar. The collocation of color is based on family's favorite color - blue. Rather than put the blue element into the fabrics, we try to implement the color into the iron pieces, and embellish the grey wall with navy blue sloping shelves.









SINGLE UNIT

Interior Designer / Project Manager

New Taipei, Taiwan | 37 m² | 2017 |

In this 37 m² apartment, all the requirements for living are equipped. The owner has a high standard for the kitchen, therefore, the layout is developed based on the design of kitchen. The layout is divided into two parts: the open area, and the private area. The fields in the open area are defined by the flooring materials, the floor in the kitchen area are tiles which are easy to maintain, and the floor in the living room are solid flooring. There are not much space for storage, sloping shelves and hooks are the solutions.

The television cabinet in the living room contains several functions. The cabinet not only can create additional storage spaces for the bedroom, the glass above the cabinet also can provide the sunshine for the living room. Even though this is a tiny apartment, the owner still requires to keep the privacy between the living room and bedroom. Therefore, the cabinet itself and the curtains above the cabinet can be drawn down for isolating the bedroom.





HSIEH YI•TING