

RV
D

INTERIOR DESIGN
PRATT INSTITUTE



1-4

IRAVAT
RESIDENTIAL DESIGN



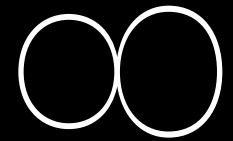
9-12

PLANAR
EQUILIBRIUM
RESIDENTIAL DESIGN



1-4

POLYMORPHING
PETALS
RETAIL/ INSTALLATION
DESIGN



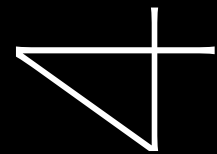
9-12

EXPRESSION
MODELS/SKETCHES/PHOTO



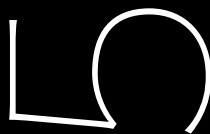
5-8

IFETAYO
WORKPLACE DESIGN



5-8

ASPIRAR
HOSTEL DESIGN



1-4

CAMBIO
CAFE/BAR DESIGN



9-12

PYER MOSS
EXHIBITION DESIGN

My name is Rianna V Desai

I am a **detail-oriented** creative that seeks to add **poetry to function**. My versatile design interests help me pursue problem solving through unconventional **multi-disciplinary** methods. **Process, analysis and intentionality** are key in my design ideation. Keeping socio-cultural and environmental needs at the forefront is an important goal in my process. I am interested in **curating special atmospheres** and bringing out my **culture** and personality through my creations. As a creative professional, I consider myself an **empathetic designer**, looking to constantly learn and grow.

IRAVAT

Information

Project Type : Residential

Location : Khandala, India

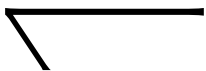
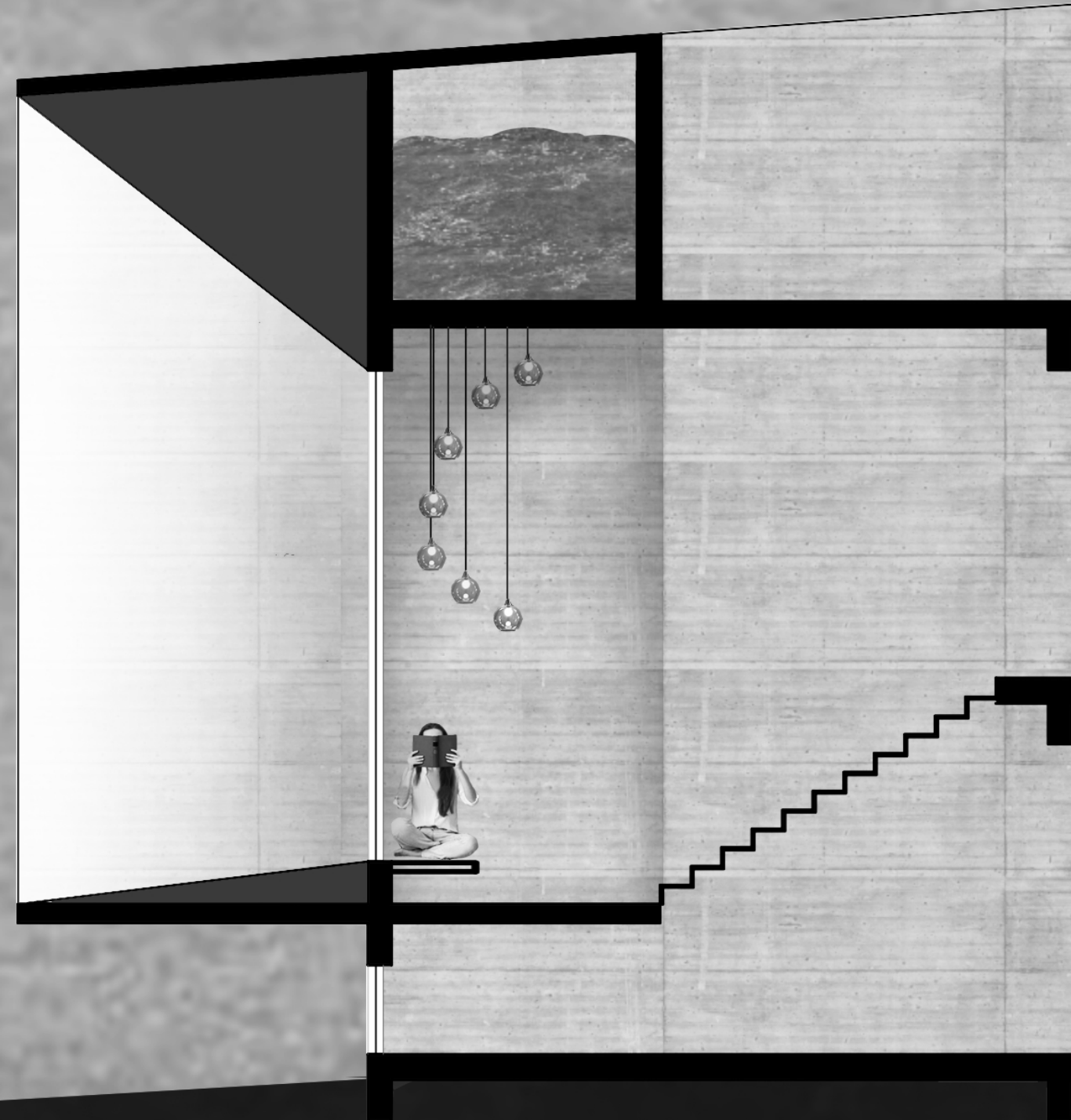
Date : 2019

Type : Internship project at RED Architects

Skill : Autocad, Photoshop

Description

Iravat is a luxury holiday home designed to create a tension between the hilly mountainside and architecture . The interiors are designed with intentionality and attention to detail. A project that I worked on at RED Architects , an interior design and architecture firm in Bombay, India.



FIRST FLOOR PLAN

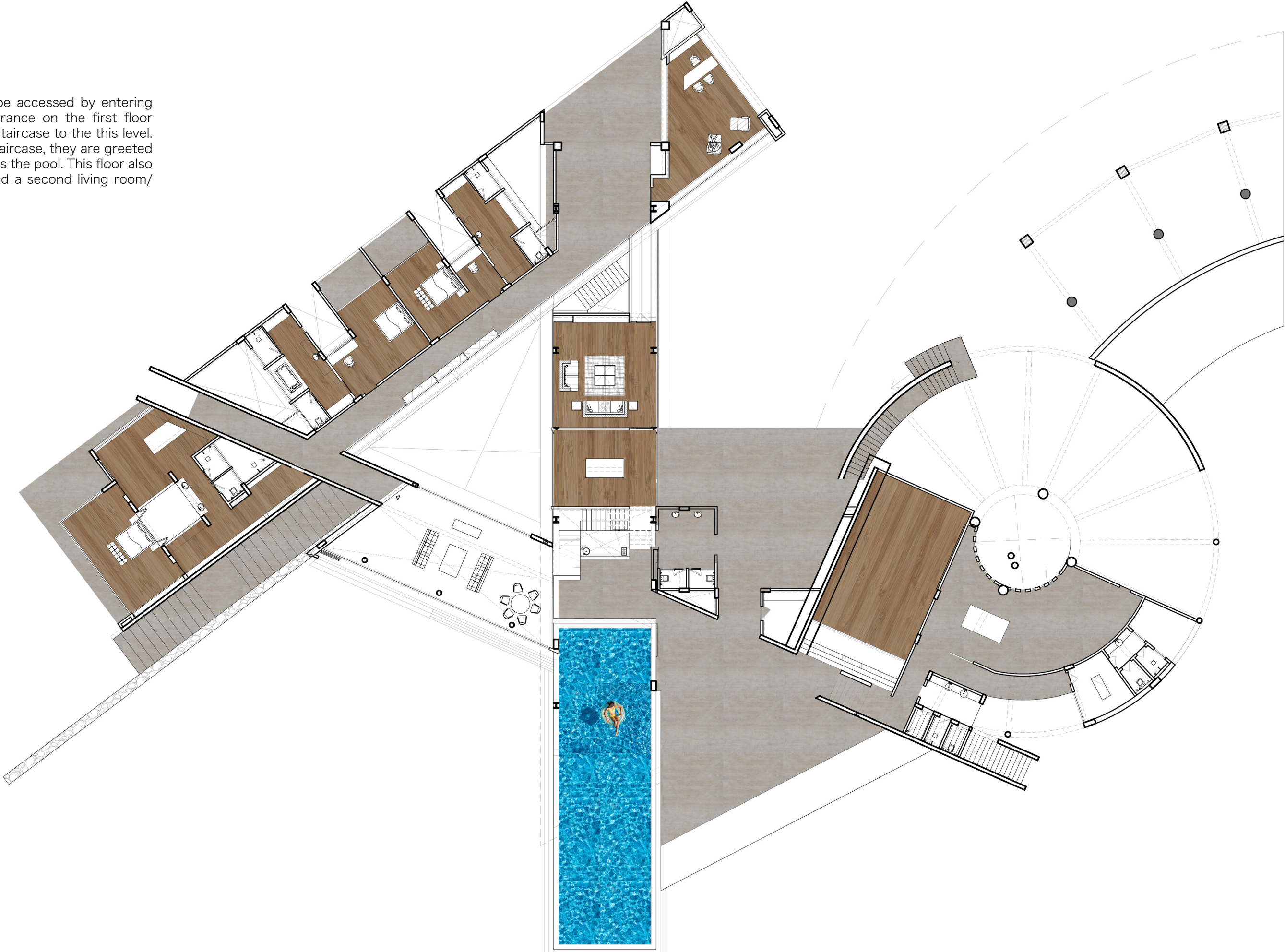
Iravat is a holiday home located in Khandala, India. The architecture stands proudly on the hillside with brilliant views that are framed by the interiors.

The dynamic plan boasts the layered design, brilliant scale of the space and the curated entry sequence. One can access the inside by driving up past the curved sloped driveway to the first floor where the user is greeted by the living room and floating dining room, which are accompanied by the kitchen.



GROUND FLOOR PLAN

The ground floor can be accessed by entering through the main entrance on the first floor and taking the central staircase to the this level. As one descends the staircase, they are greeted by the bar that overlooks the pool. This floor also hosts the bedrooms and a second living room/ gathering space.



BUILDING SECTION

This building section illustrates the character of the space and its strong presence in nature.

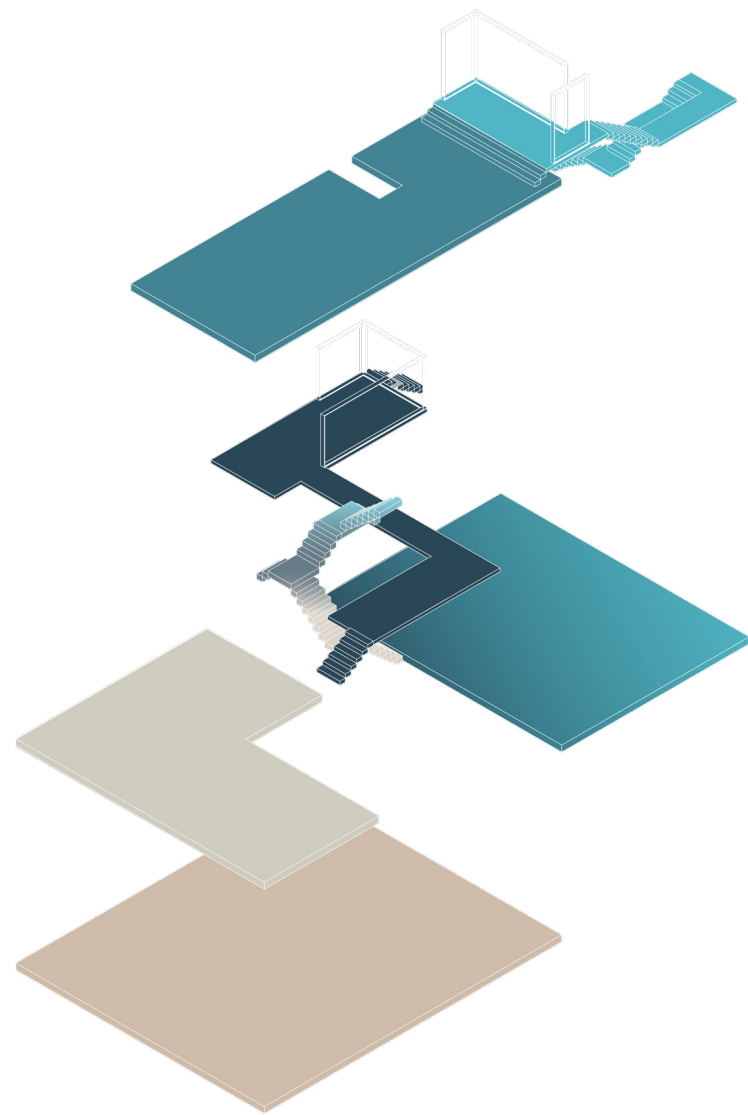
This drawing was drafted in AutoCad and rendered in Photoshop



PLANAR EQUILIBRIUM

Information	Project Type : Residential
	Location : Brooklyn, New York
	Date : 2019
	Type: Academic project at Pratt Institute (project is archived at Pratt)
Description	Skill : Model making, Rhino, Photoshop, Illustrator, Autocad
	<p>This urban dwelling is designed for a unique family. It is designed to have distinct spaces for the use of individual family members and other spaces for the family to occupy together. The central circulation in the house connects to all the smaller thresholds and interstitial zones creating sectionally dynamic spaces.</p> <p>The design acts as an equilibrium achiever, mitigating the family's polar personalities through its sectional levels that are connected seamlessly through the central staircase.</p>

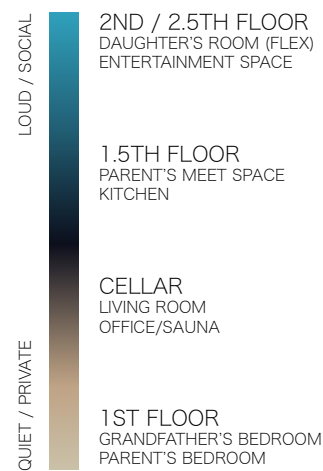




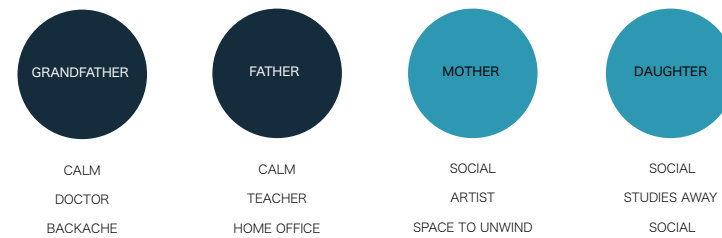
- _____ 2.5TH FLOOR - protruding balcony
- _____ 2ND FLOOR - daughter's bedroom & entertainment space
- _____ 1.5TH FLOOR - kitchen & parent's meet space
- _____ 1ST FLOOR - grandfather & parents' bedrooms
- _____ CELLAR - dining/living roo, home office & sauna

SPATIAL ORGANISING DIAGRAM

SPACE TYPOLOGY DIAGRAM

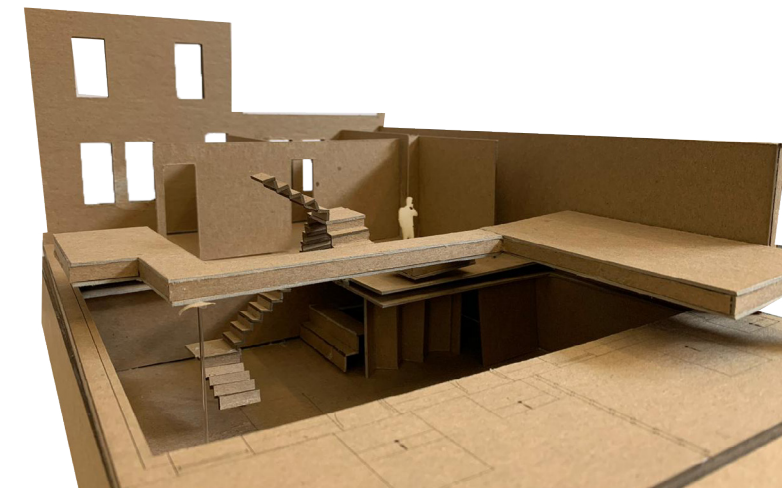
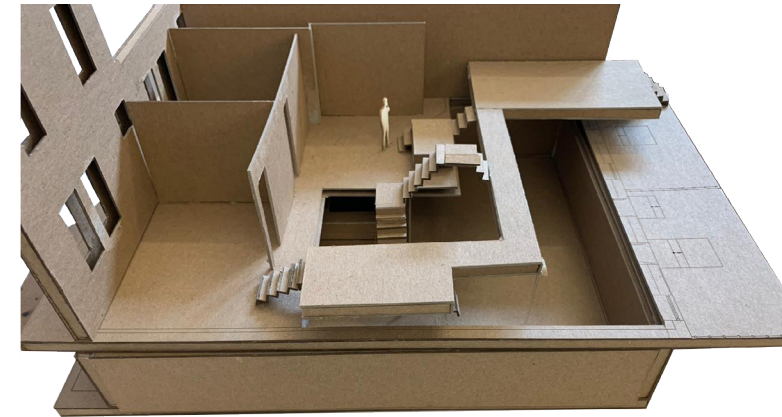


CLIENT ANALYSIS / PERSONALITIES + NEEDS



DESIGNING SPACES FOR THE CLIENT

These diagrams illustrate the thought behind program location and client needs. Each space is customised for the family's special requirements, keeping in mind noise levels and privacy.



PROCESS MODELS

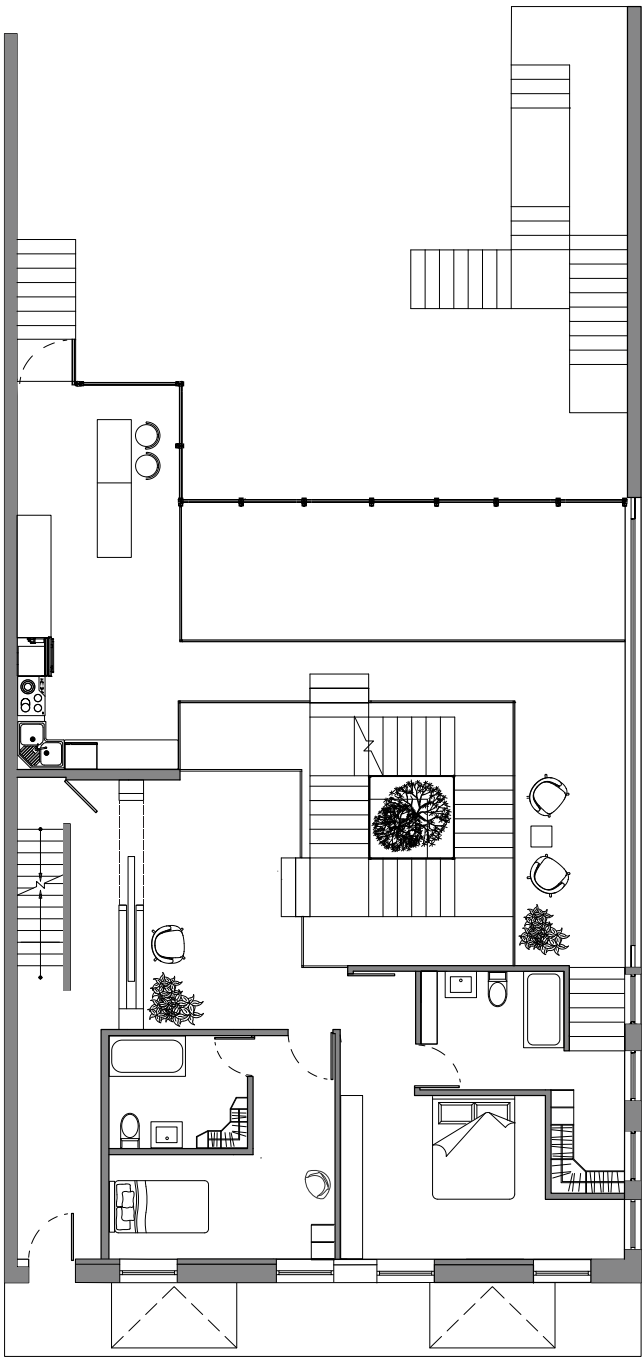


EXTERIOR FACADE
(BACKYARD FACING IN)

1st and 1.5th floor plan, drafted and rendered.

This plan illustrates the floating 1.5th level that can be accessed via the main staircase. It houses the kitchen and the floating walkway to the parent's meet space. The backyard can be accessed through the kitchen.

ORTHOGONAL PLAN



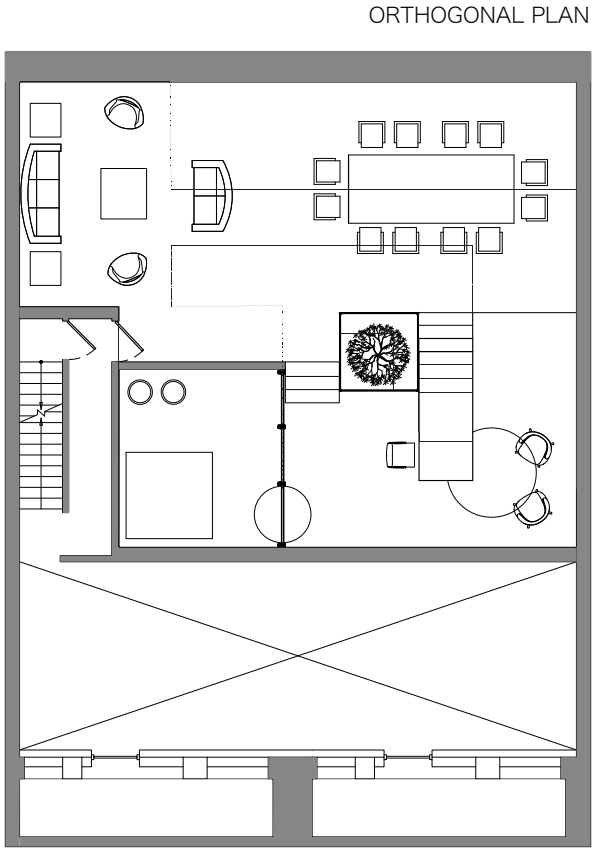
PERSPECTIVAL RENDERED PLAN



FIRST FLOOR PLAN

Below is the Cellar floor plan, drafted and rendered.

The cellar houses the living and dining space as well as the home office and sauna



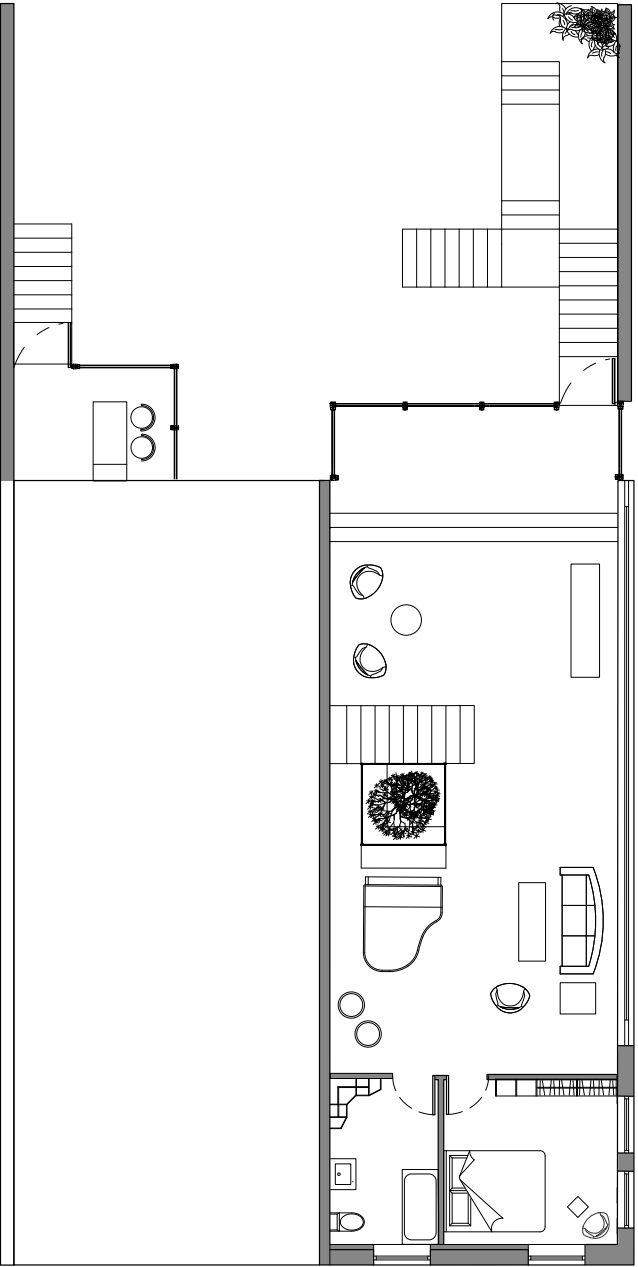
To the right is the 2nd floor plan, drafted and rendered.

The 2nd floor houses the daughter's bedroom, entertainment space and direct access to the backyard



CELLAR FLOOR PLAN

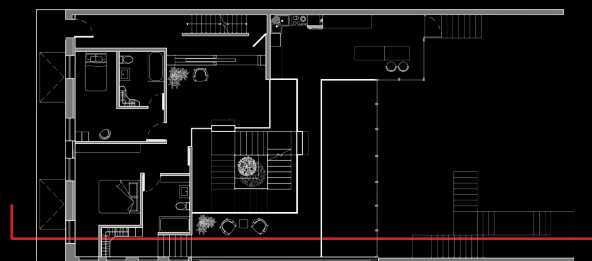
ORTHOGONAL PLAN



PERSPECTIVAL RENDERED PLAN



SECOND FLOOR PLAN



LONG BUILDING SECTION

This perspectival rendered section captures the dynamism of the design, illustrating how the changing levels creates new adjacencies between programs. The section shows the generous sunlight the cellar receives as well as the visual biophilia creating a conversation between the interiors and exterior.

The section cuts through the daughter's bedroom, entertainment space, the parent's closet and meet space, the home office, dining room and the backyard niche seating

SHORT BUILDING SECTION

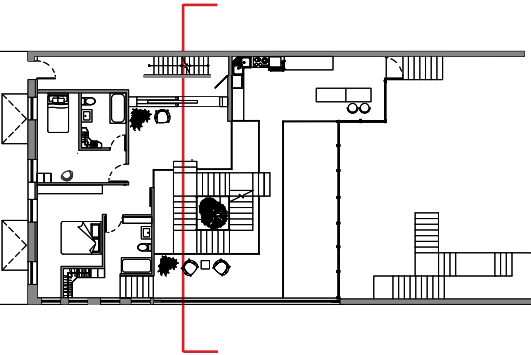
This perspectival rendered section provides a view into the house, cutting through the sauna, home office, parents meet space and enetrainment space.

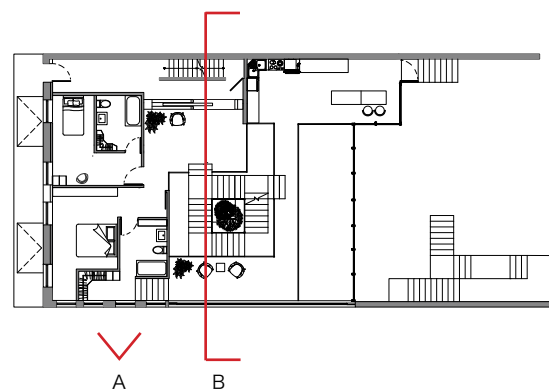
The staircase wraps around the glass atrium, connecting all the levels together seamlessly.

This section also shows off the partly fixed glass partition that allows for sun to soak the cellar.



FINAL MODEL





A - Detail perspective of the walk in wardrobe and stairs to the parents' meet space.

B - Partial vertical section of the building, showing the parents' meet space, the level below and above and the central glass atrium that runs through the height of the house.





CELLAR

Dining room
Home office
Atrium & staircase

IFETAYO

Information

Project Type : Cultural Dance Center

Location : Crown Heights, Brooklyn

Date : 2020

Type : Academic project at Pratt Institute

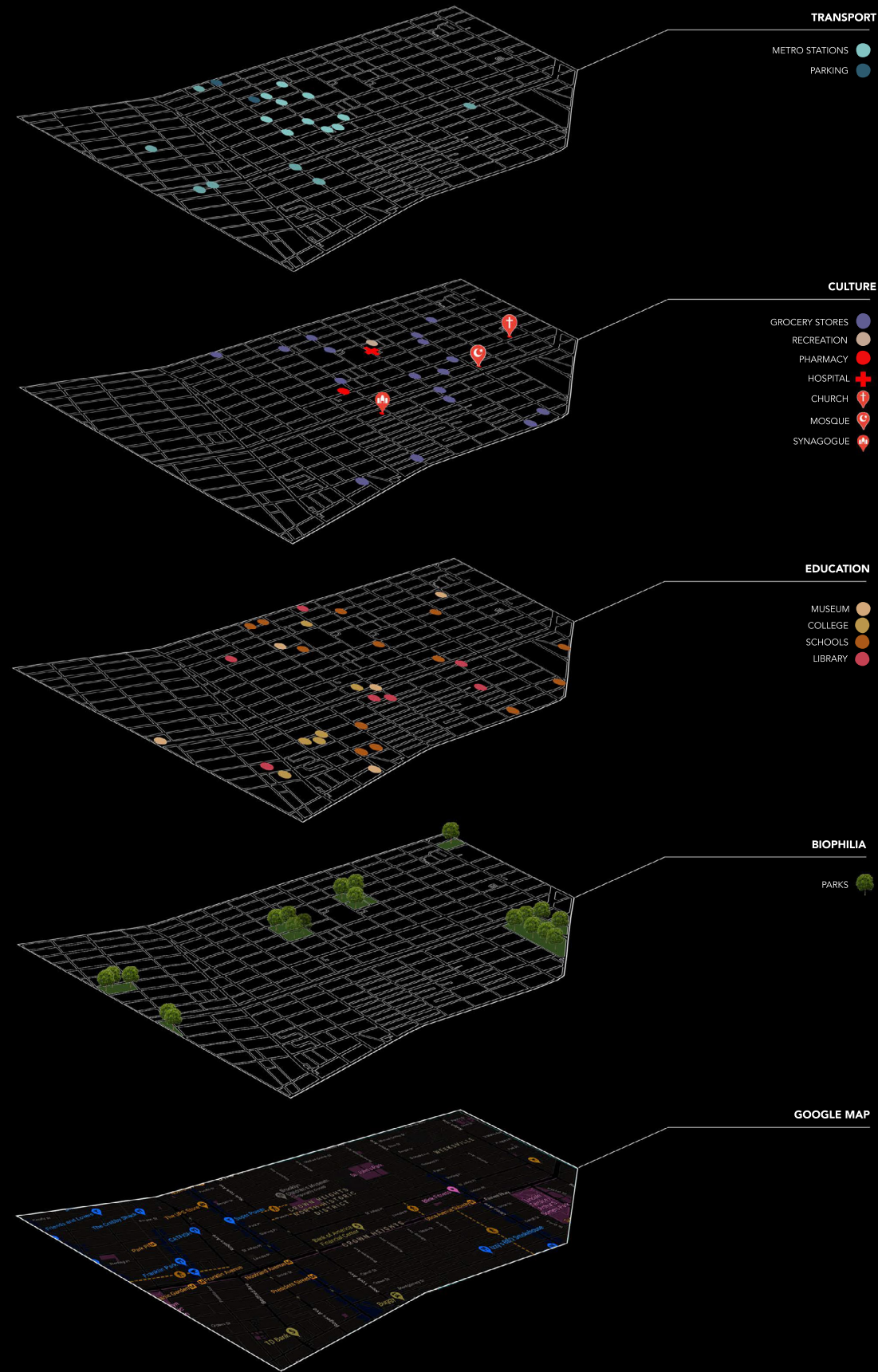
Skill : Rhino, Autocad, Photoshop, Illustrato

Description

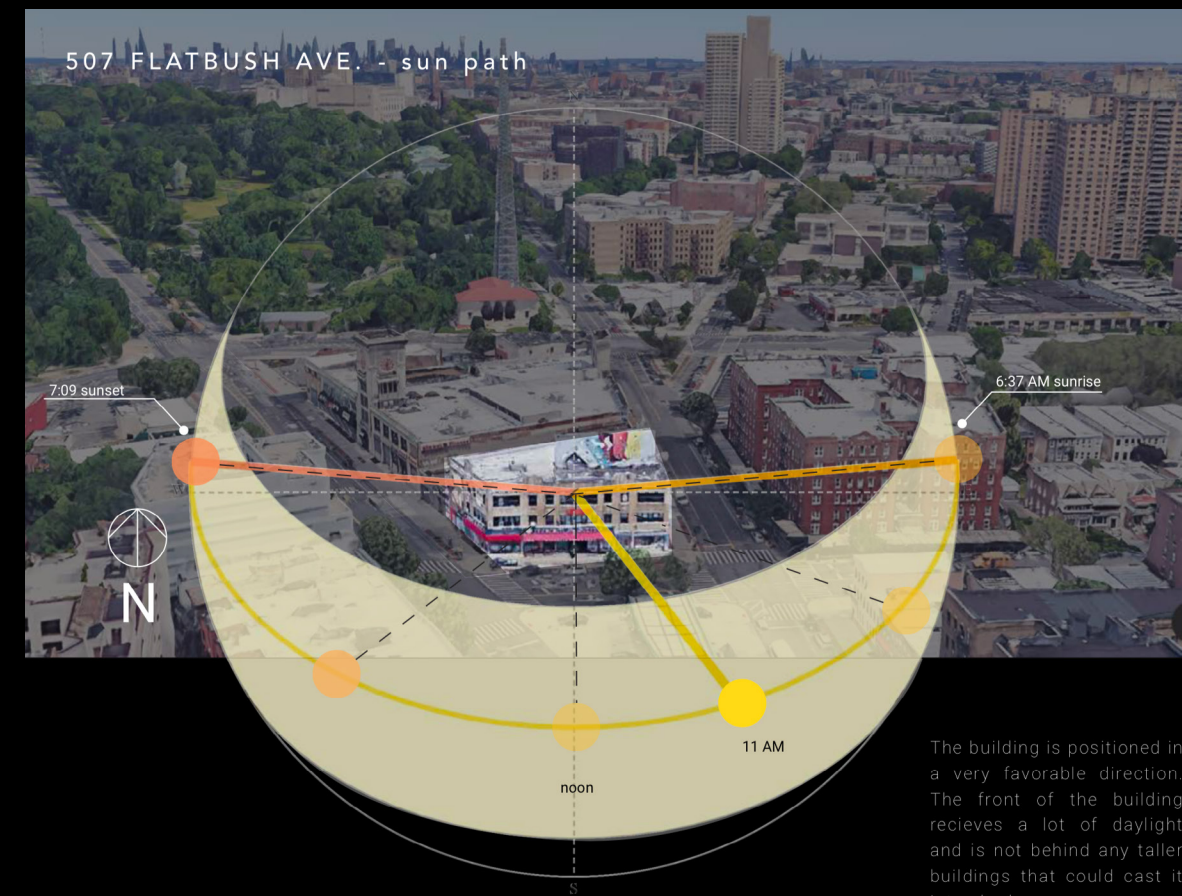
Ifetayo is an organisation that teaces youth about African culture and heritage through the arts. The space designed is a cultural dance center and HQ for Ifetayo in Crown Heights, Brooklyn.

The design is a reflection of the African-American diaspora that exists so richly in Brooklyn. The space is designed for maximum efficiency while also paying great attention to detail and research





CROWN HEIGHTS NEIGHBORHOOD ANALYSIS



The building is positioned in a very favorable direction. The front of the building receives a lot of daylight and is not behind any taller buildings that could cast it into shadows.

EQUINOX CHARTS

today - September 14

Dawn:	06:10:33
Sunrise:	06:37:40
Culmination:	12:50:27
Sunset:	19:02:33
Dusk:	19:29:36
Daylight duration:	12h24m53s
Distance (km):	150.389,141
Altitude:	-29.11°
Azimuth:	57.23°

March Equinox - March 19

Dawn:	06:32:47
Sunrise:	06:59:43
Culmination:	13:03:24
Sunset:	19:07:46
Dusk:	19:34:45
Daylight duration:	12h8m36s
Distance (km):	148.990,431
Altitude:	-33.28°
Azimuth:	56.95°

June Equinox - June 20

Dawn:	04:51:30
Sunrise:	05:24:30
Culmination:	12:57:35
Sunset:	20:30:39
Dusk:	21:03:40
Daylight duration:	15h6m9s
Distance (km):	152.021,530
Altitude:	-13.22°
Azimuth:	42.34°

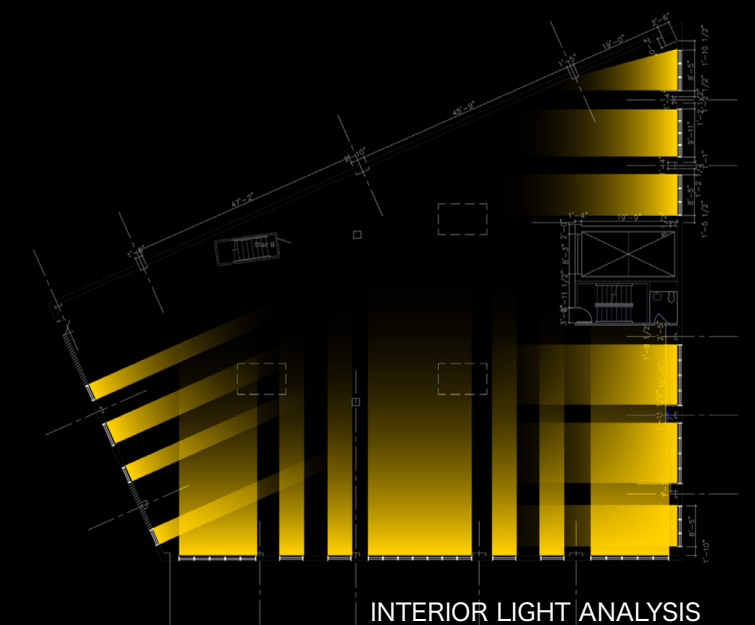
Dec Equinox - December 20

Dawn:	06:45:29
Sunrise:	07:16:06
Culmination:	11:54:15
Sunset:	16:32:24
Dusk:	17:03:00
Daylight duration:	9h16m18s
Distance (km):	147.164,899
Altitude:	-36.29°
Azimuth:	91.16°

BUILDING LIGHT ANALYSIS

Neighborhood and building analysis to better understand the context in which the design would grow

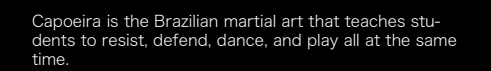
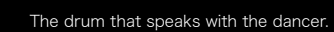
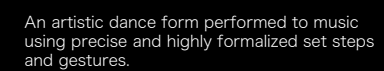
window shape affecting light entering space, the unusual shape of the building allows for an interesting geometry analysis that the natural light entering the space adds to the overlap of light paths creates an interesting space dividing mechanism to keep in mind while planning the space and its programs



The growth graph of ifetayo is great and hence this space can be designed as its HQ. And hence while there is a ton of space for the children, in-cluding a fun rooftop space for performances, there should be a good office environment

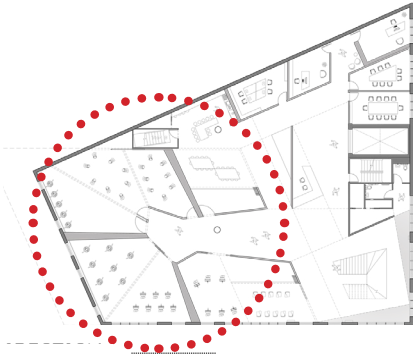
- 31

IFETAYO

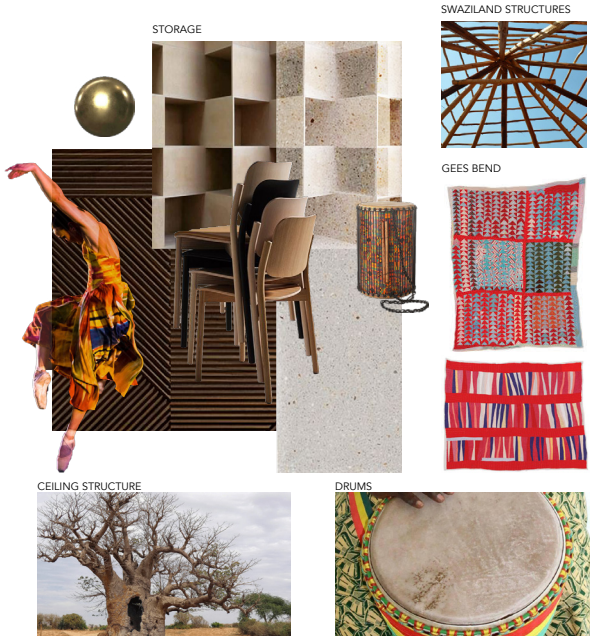




IBIS DRUMS STUDIO



Studios are located on the bottom left of the plan, getting prime window access as well as facing the important corner. The studios are divided with a space saving tanbour door system elevated by a fractalised ceiling condiiton inspired by the baobab tree and swaziland vernacular architecture. The space opens up through the a widening mouth with simultaneous access to all studios at once. The space is designed to create an interaction amongst all the students as they enter their own spaces Immediate asscess to : stairs and canteen



CULTURE & DESIGN PRECEDENTS

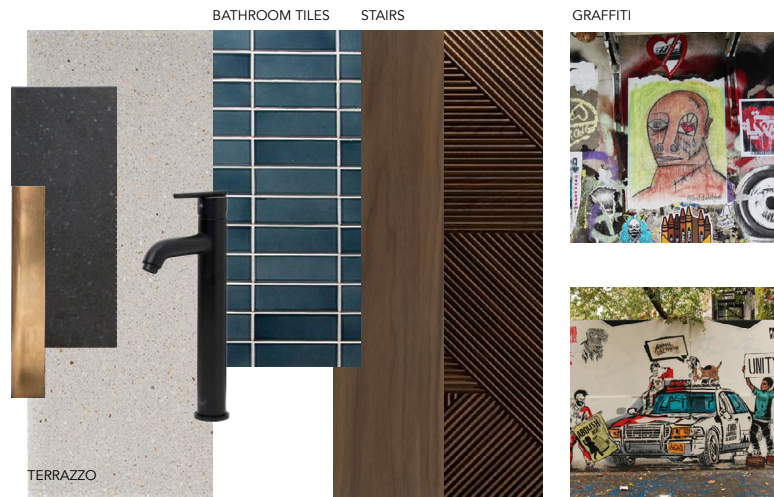
Gees bend + shelving + tambour
Inspired by the bold drama of the Gees Bend quilts, the shelving and tambour room dividers are designed to have vibrant colours and patterns. The use of the diamond pattern symbolises cycles of life, and the changing patterns symbolises the birth of a new life.

Baobab + ceiling structure
The Baobab, The Tree of Life, heavily inspired the design of the space as well as the detailed ceiling structure. The fractalised branches give form to function in the ceiling, bringing all the spaces together.

Swaziland + ceiling structure + material
Swaziland vernacular architecture includes a sturdy wooden striated ceiling structure that inspired the material and form of the ceiling structure in the studios.

DETAIL FLOOR PLAN





CULTURE & DESIGN PRECEDENTS

Swaziland + toilet + material

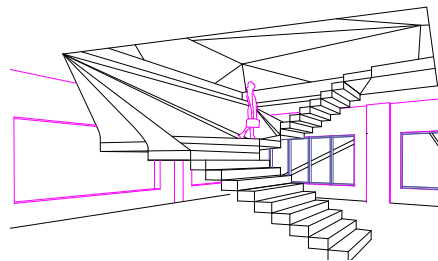
Using the same wood in the gallery space and designing the toilet for a cooler colour palette.

Niches + gallery + graffiti

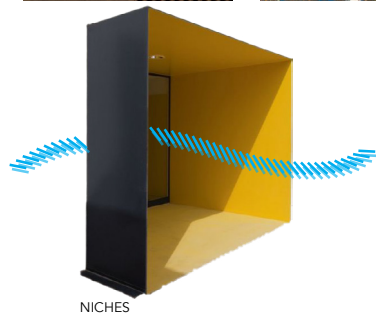
Designing the staircase area as a space of respite and gathering by adding a gallery space and seating niches to curate moments to allow for conversations and appreciation of Brooklyn's culture through graffiti.

Diane Von Forstenburg + facade

Using the glass facade and roof structure as inspiration to create tension between the exterior view and facade of the building, to highlight and bring attention to Ifetayo.

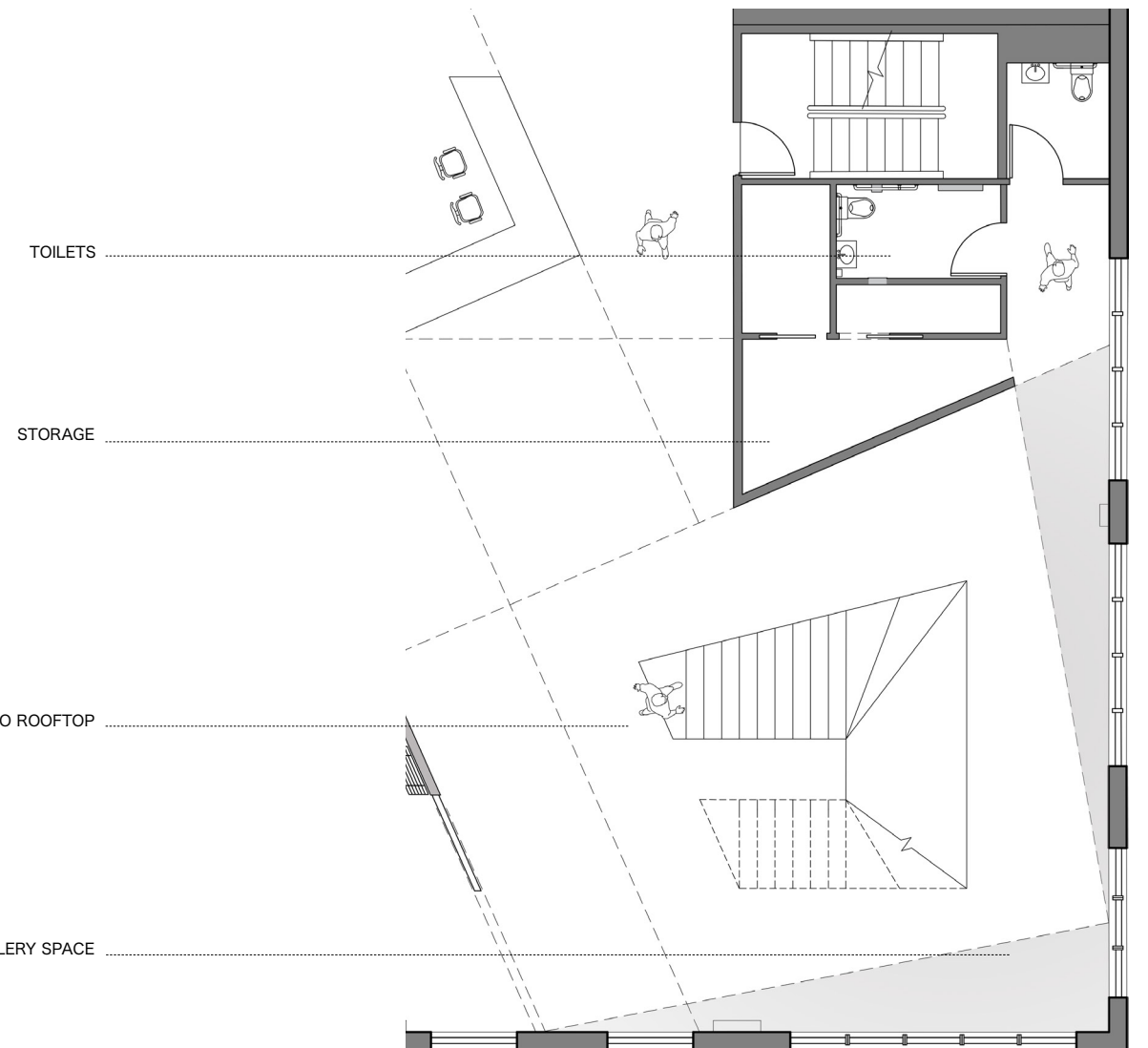


DIANE VON FORSTENBURG



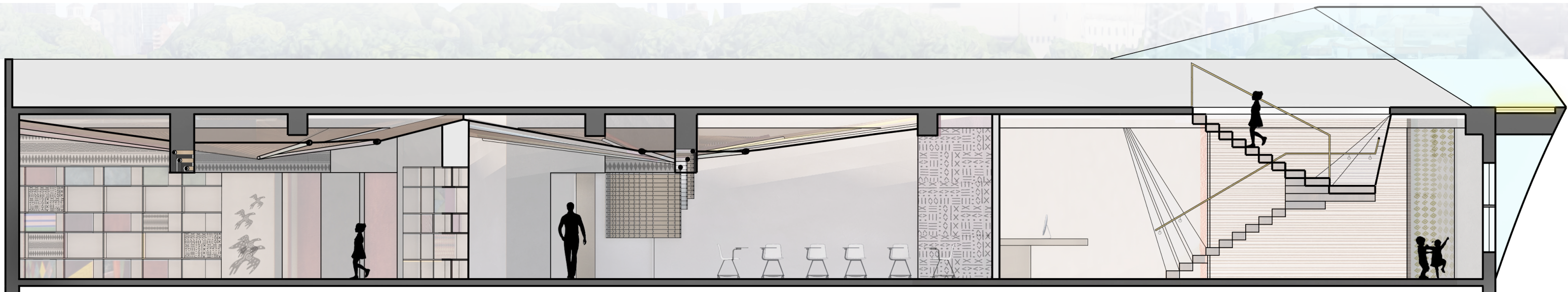
NICHES

The staircase gallery space is a dynamic space for both conversation and introspection. Creating a skylight condition and changing the facade at this bottom right corner will allow light to flood in and create a conversation from the interior to the exterior providing the street view a glimpse into the cultural exchange happening at Ifetayo. Creating a landmark for culture and secondly design. The gallery space could be used to showcase great inspiring works for the children.



GALLERY / STAIRCASE

SECTION





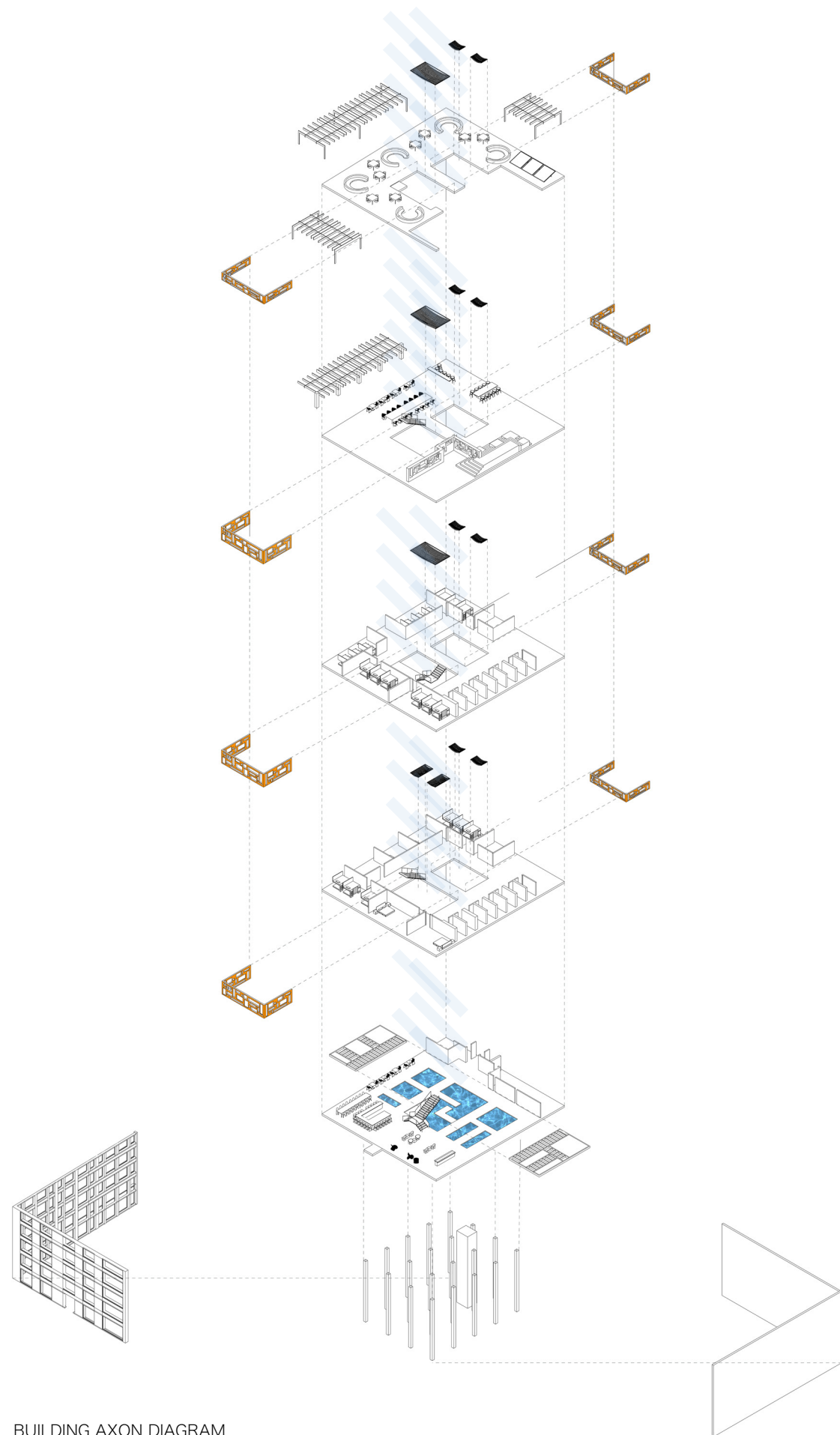
KORI STUDIO

ASPIRAR

Information	Project Type : Hostel
	Location : New Mexico, Mexico
	Date : 2020
	Type : Academic group project at Pratt Institute
	Skill : Rhino, Photoshop, Illustrator

Description	<p>The hostel , Aspirar, gets its name from its trademark hammock design. This boutique hostel has a central courtyard open to ventilation, the space is designed to provide an oasis in the city by creating a contemporary eclectic and relaxing space for young travellers.</p> <p>The unique hammock design of the hostel provides respite in the middle of the hot city by not only bringing natural ventilation into the space but by also curating moments to socialise.</p> <p>The hostel has a cafe, work space, games room , pool and a rooftop lounge.</p>
-------------	---



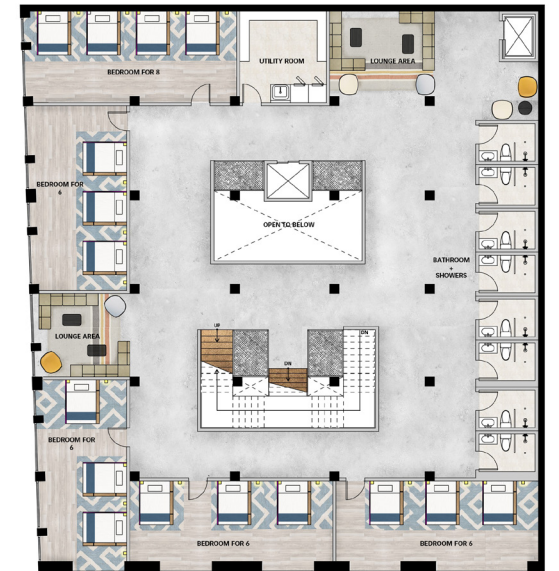


BUILDING AXON DIAGRAM

1ST FLOOR PLAN



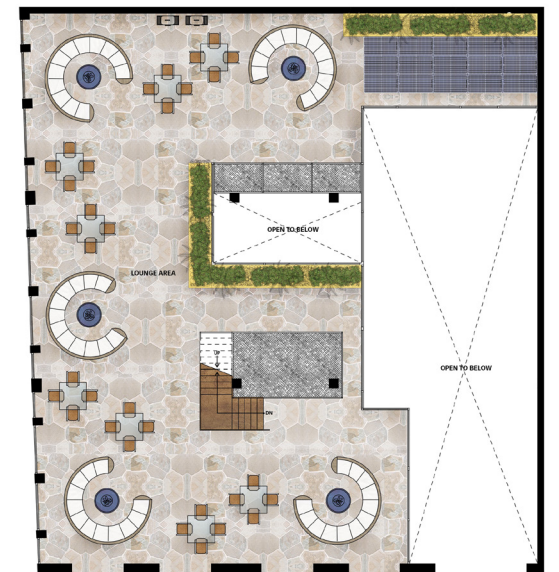
2ND FLOOR PLAN



4TH FLOOR PLAN



ROOFTOP PLAN



The axon diagram shows programs on each floor that are interconnected to one another by the central ventilation and hammock design. The first floor hosts the reception and an eclectic cafe and bar. The reception also has a water feature that brings a cooling factor into the space.

The hostel logo symbolises the sense of biophilia that is designed into the space through elements like the hammock.



HOSTEL LOGO



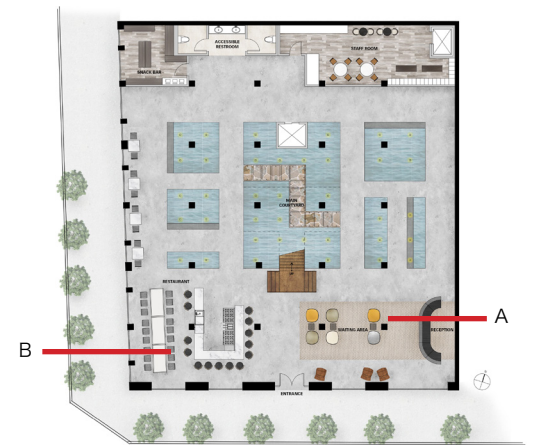
RECEPTION



CAFE&BAR VIGNETTE (B)

MATERIAL · FURNITURE · LIGHTING

1ST FLOOR PLAN



A - Aspirar reception. The materiality reflected in this space is that of the existing brick architecture juxtaposed with contemporary furniture. The use of fayetoogood's Roly-Poly lounge chairs add a fresh pop of colour that works well with the wooden lounge chairs and rattan pendent. Large potted plants add a touch of green that lift the space and provide fresh vibrancy.

B - Aspirar Cafe & Bar. The yellow clay walls along with the brick create a warm atmosphere that goes well with the varying rattan pendants that create dynamic patterns through light. The metal stools add a contemporary chicness to the bar.

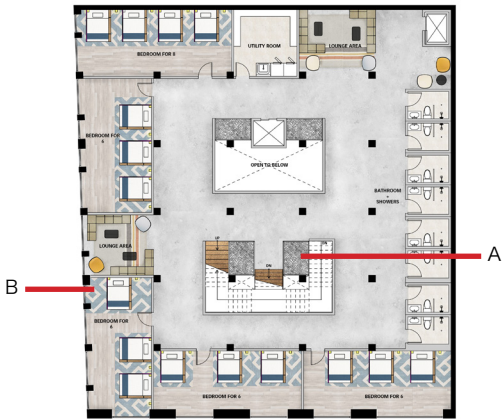


RECEPTION VIGNETTE (A)

MATERIAL · FURNITURE · LIGHTING



FLOATING HAMMOCKS (A)



2ND & 3RD FLOOR PLAN

A - Hammocks. The hammocks are central to the design of his hostel. These casual lounge spaces create potential for serendipitous social exchanges, adding an excited buzz to the atmosphere

B - Bedroom. This vignette provides a glimpse into the curated aesthetic for the bedrooms. The colour palette of blues and linen whites provide an escape from the hot su, giving the visitors their own mini oases to unwind in.

LINEN CURTAIN

PLASTER WALL

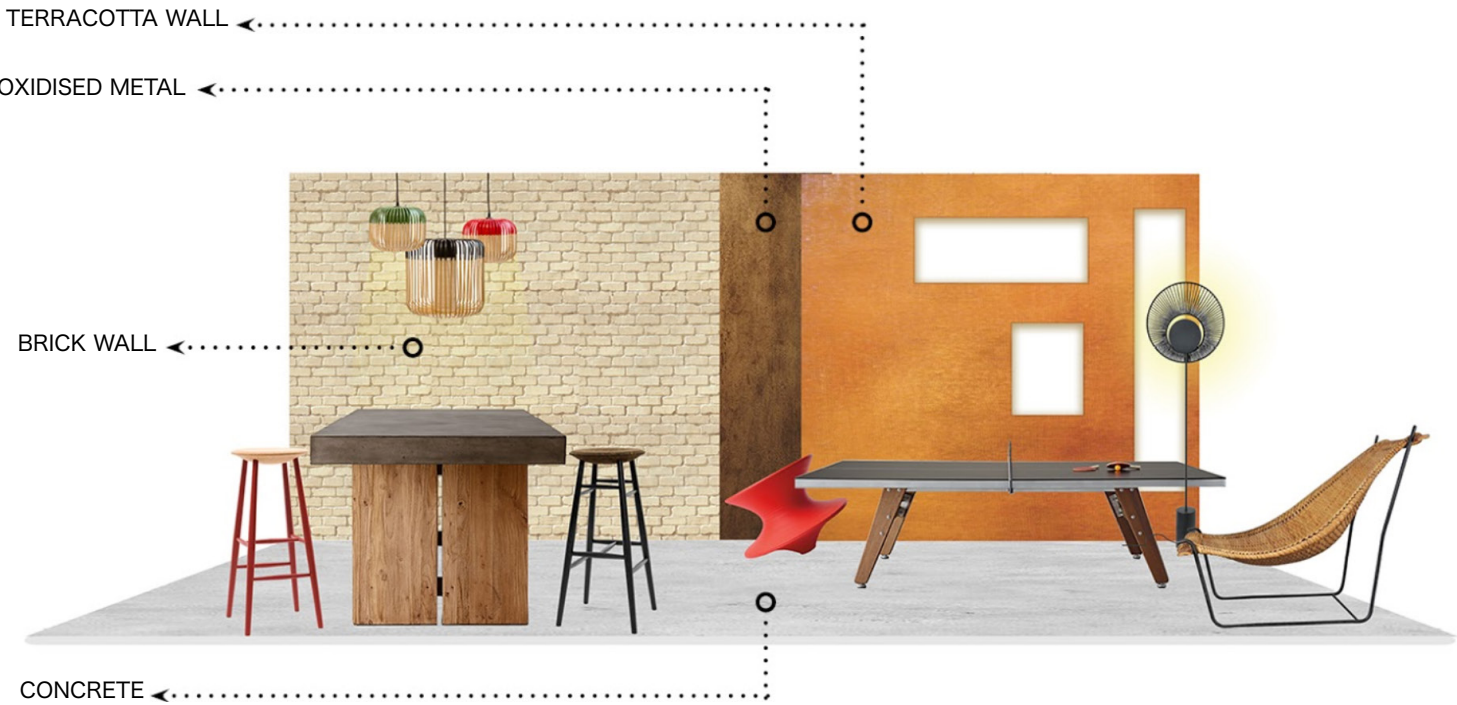
WOOL RUG

OAK WOOD FLOOR

BEDROOM VIGNETTE (B)

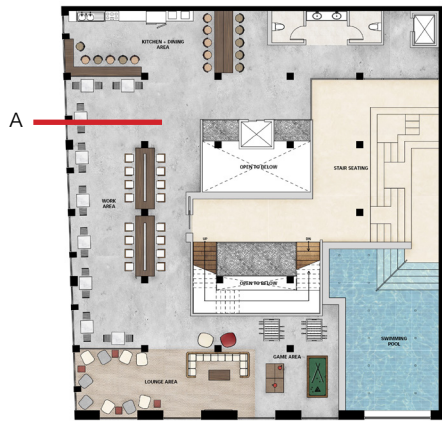
MATERIAL · FURNITURE · LIGHTING



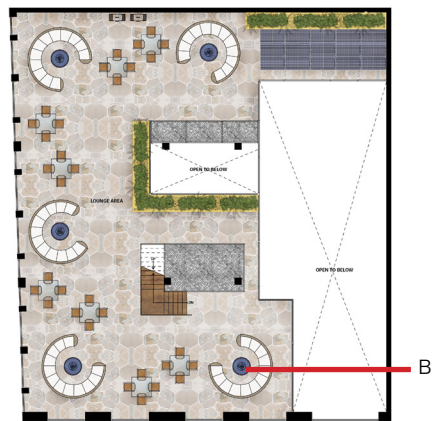


WORK SPACE & GAME ROOM VIGNETTE (A)

MATERIAL · FURNITURE · LIGHTING



4TH FLOOR PLAN



ROOFTOP PLAN

A - Work lounge and game room. Furnished with movable furniture to give the space a more relaxed and collaborative atmosphere.

B - Rooftop lounge. A lounge with a view and custom fire-place seating.



ROOFTOP LOUNGE (B)

CAMBIO

Information Project Type : Cafe & Bar

Location : Brooklyn, New York

Date : 2020

Type : Academic group project at Pratt Institute

Skill : Autocad, Rhino, Photoshop, Illustrator

Description Cambio is a Cafe turned Bar where one can be served coffee in the day and sake at night. The space is located on 191 Smith street in Brooklyn. Cambio's facade has been re designed for outdoor seating, a potential flex space through the folding doors and the pick up window for deliveries. The space has a shifting atmosphere from day to night, where the program shifts from a casual exhibition cafe space to a rave bar space with a built in stage in the bottom floor.



DESIGN CONCEPT

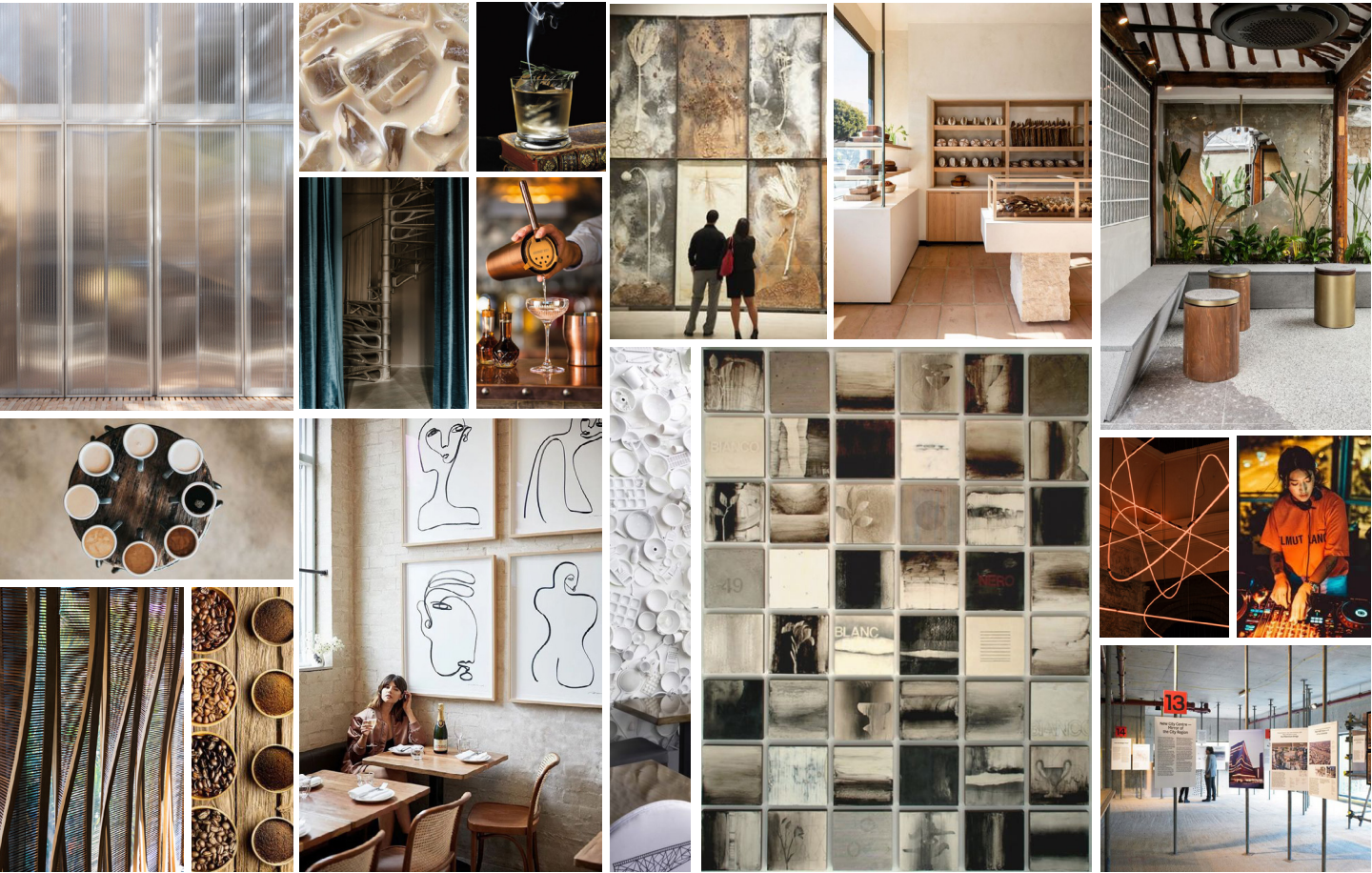
La मकान
ma.ka.n = house

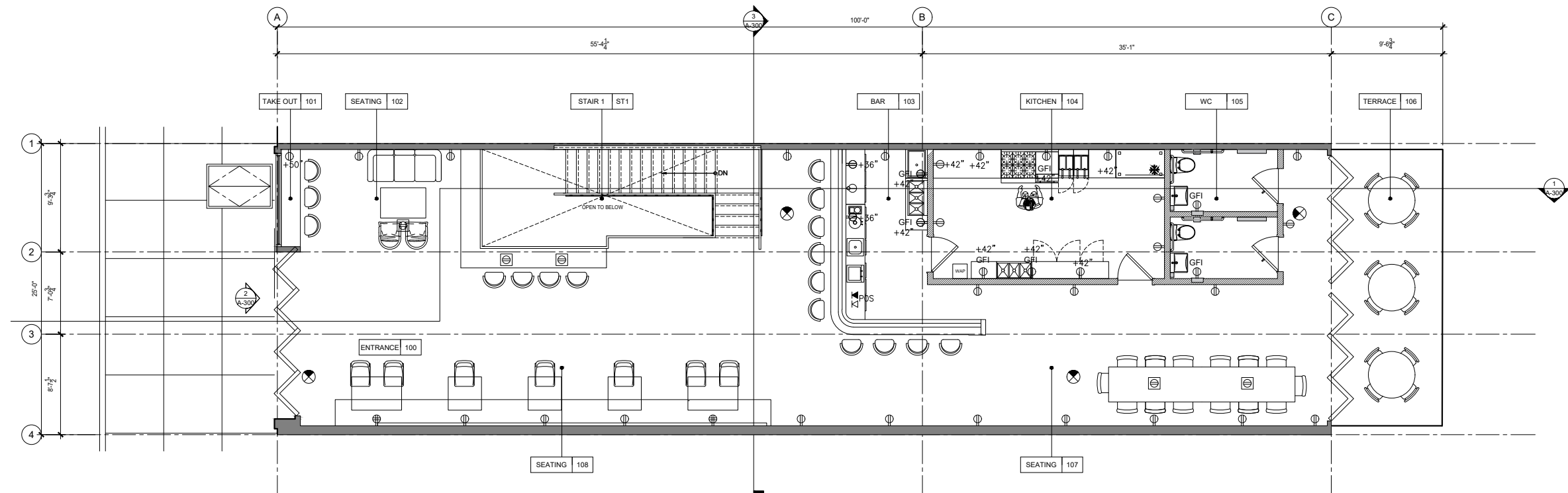
Logo of a mock design studio for the group project. A confluence of languages and cultures amongst the three group members: Indian / Turkish / Nicaraguan, overlapping Hindi, Arabic and Spanish in the name of the company, La Makaan.

This cafe, located on 191 Smith street in Brooklyn, New York, is named “Cambio”. Cambio in Spanish means “shift”, which speaks to the changing program of the cafe (day) into a bar (night).

The space shifts from a coffee cafe exhibition space to a tapas bar rave space.

MATERIAL MOOD COLLAGE



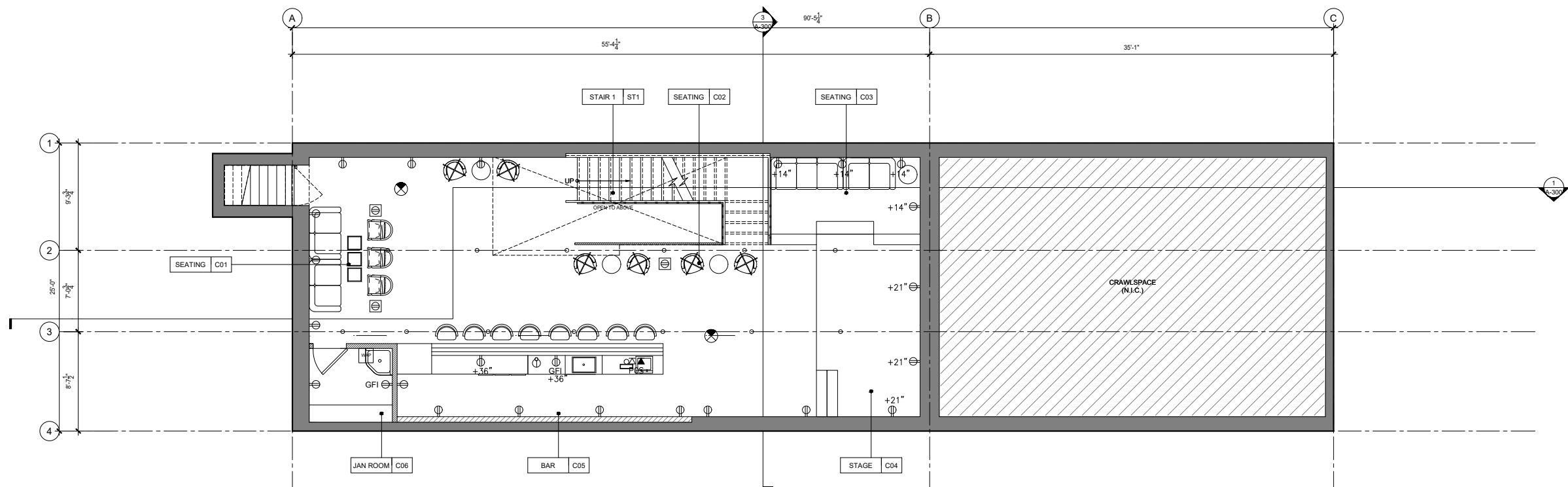


1 FIRST FLOOR POWER AND SIGNAL PLAN

3/16" = 1'-0"



COMMUNITY TABLE



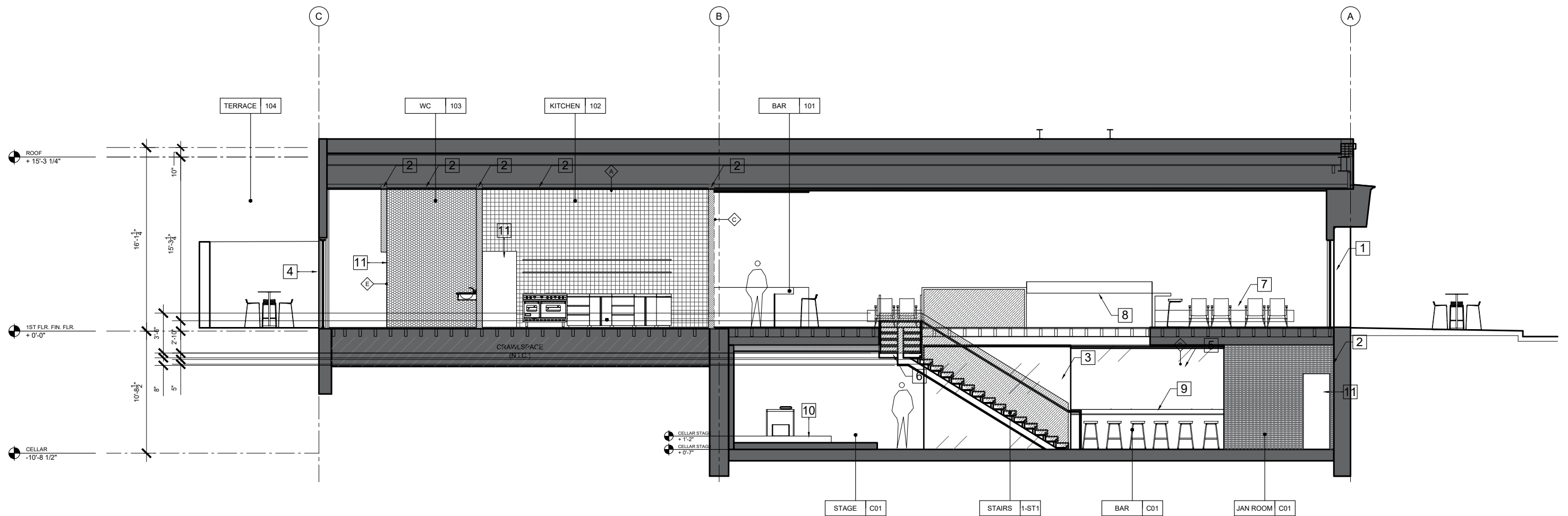
2 CELLAR POWER AND SIGNAL PLAN

3/16" = 1'-0"



FEATURE WALL SEATING AREA

The two floor plans showcase the different seating typologies for different types of interactions. They show the two bar locations as well as the custom stage built in the cellar for intimate performances. They illustrate the proximity of the the signature bar to the kitchen and access to ADA toilets



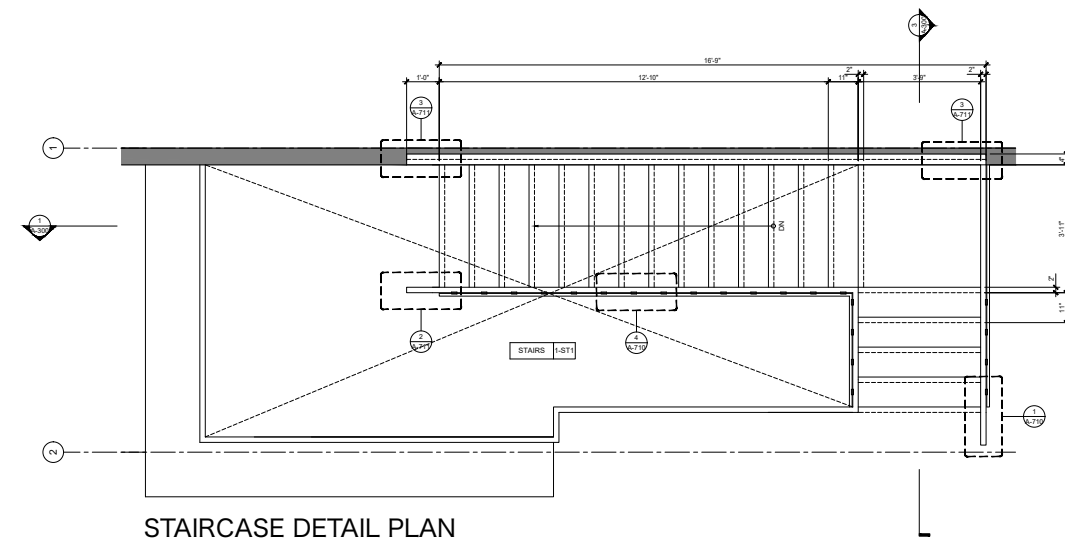
BANQUETTE SEATING

BUILDING SECTION

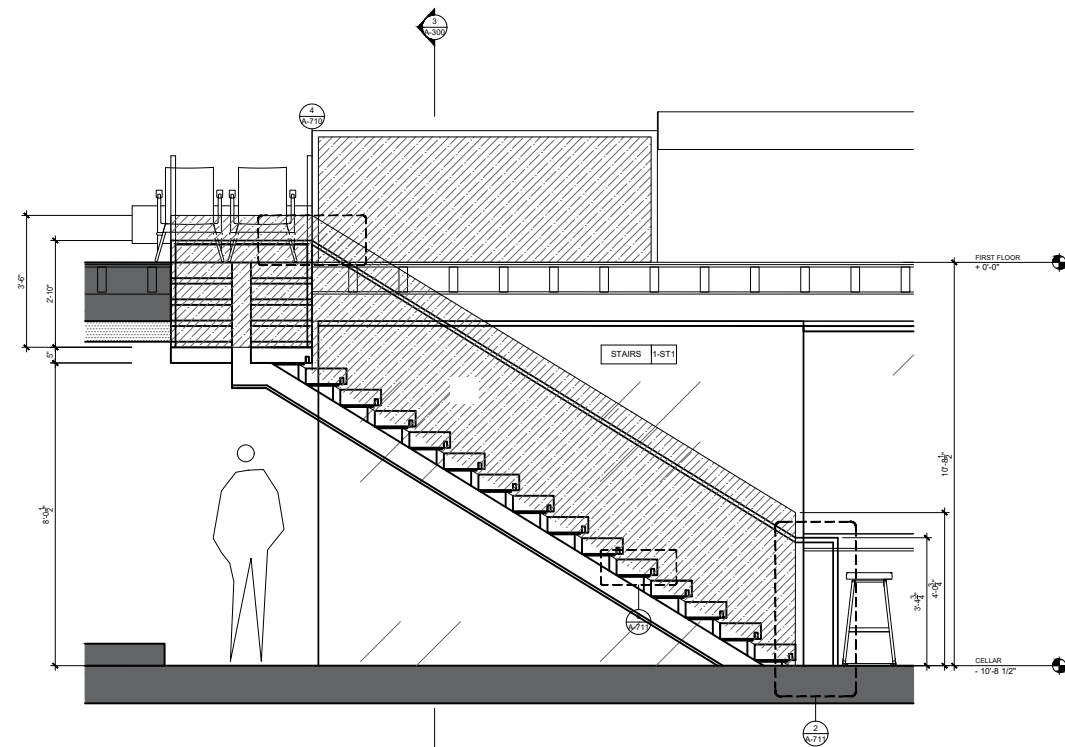
- SHEET NOTES**
- 1 ENTRANCE MOVED WITH GLASS FOLDING DOORS ADDED
 - 2 NEW GYPSUM WALLS ADDED
 - 3 TRANSLUCENT GLASS SCREEN ADDED
 - 4 TERRACE ENTRANCE MOVED WITH GLASS FOLDING DOORS ADDED
 - 5 FURRED WALL WITH TRANSLUCENT GLASS SCREEN ADDED
 - 6 NEW COMMUNICATING STAIR
 - 7 BUILT-IN SEATING
 - 8 BUILT-IN COUNTER TOP
 - 9 BUILT-IN BAR
 - 10 BUILT-IN STAGE
 - 11 NEW DOORS ADDED
 - 12 NEW WINDOW ADDED

The building section shows the transition of spaces while boasting the staircase that creates a moment of pause in the space.

The banquette seating arrangement consists of fixed and movable furniture. The colours, charcoal, matcha, wood come together to create a space that can transition from day to night while maintaining its moody eclectic atmosphere punctuated by the neon light installation.

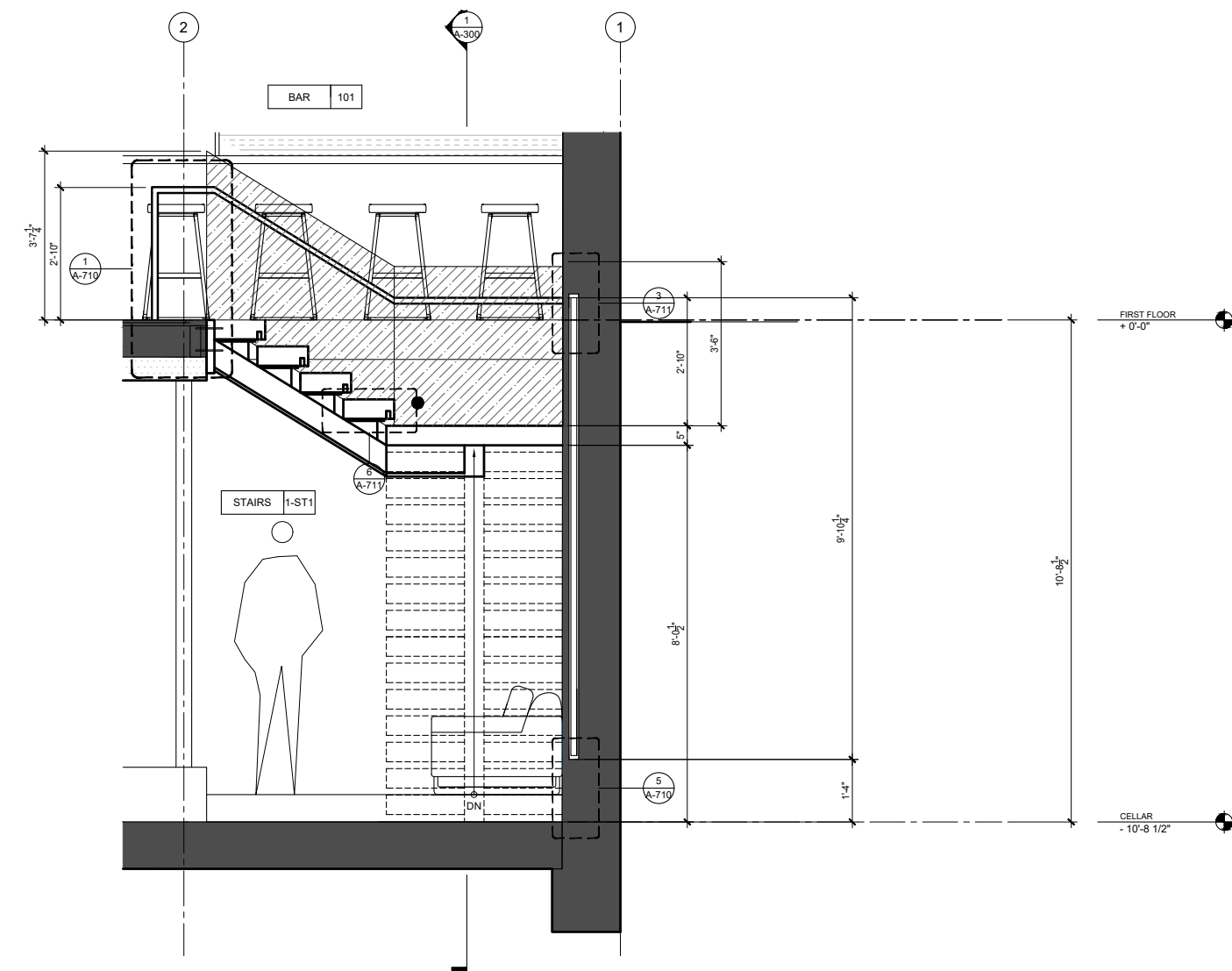


STAIRCASE DETAIL PLAN



STAIRCASE DETAIL SECTION

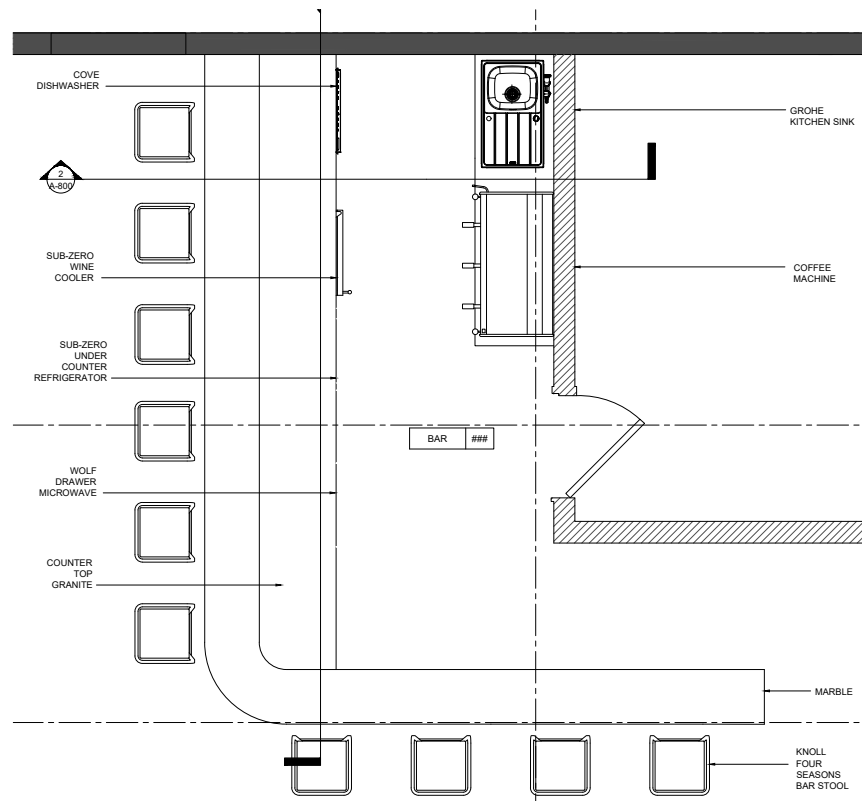
Cambio's staircase is vital to its design as it is the threshold between the day program and night program. The custom staircase has a built in handrail and a fluted glass guard rail as well as integrated lighting. This minimal, contemporary design complements the eclectic cafe.



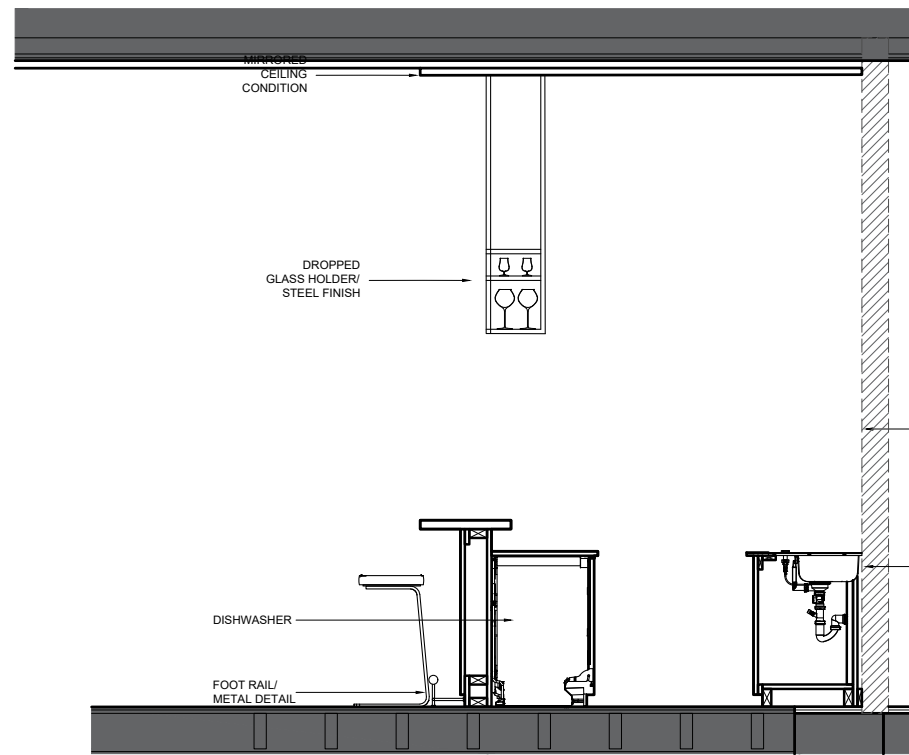
STAIRCASE DETAIL SECTION



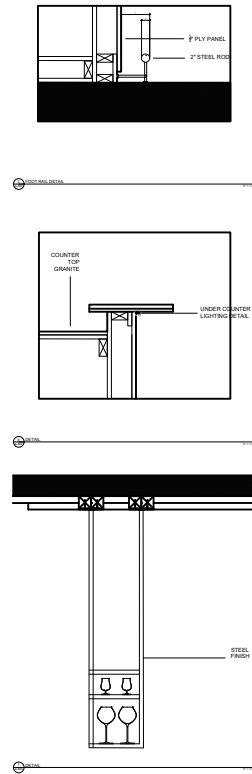
STAIR PERSPECTIVE



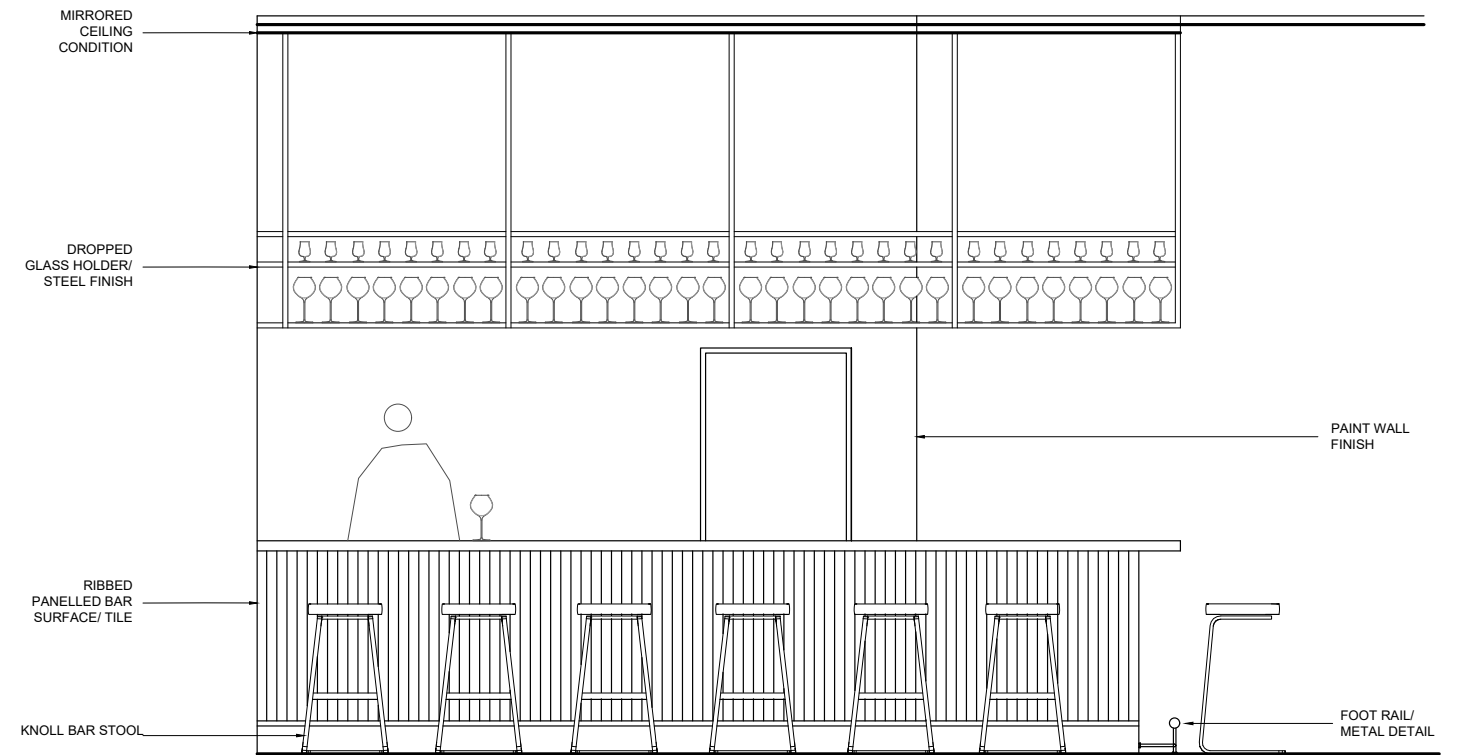
BAR DETAIL PLAN



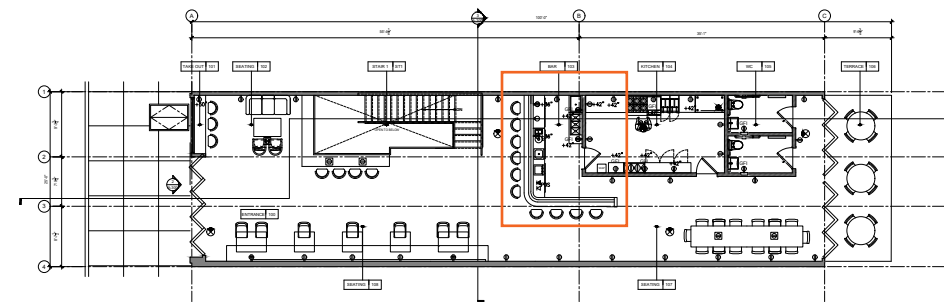
BAR DETAIL SECTION



CASEWORK DETAILS



BAR DETAIL ELEVATION



The Cambio signature bar is designed to have a fluted bar surface accented by a dull gold footrail. The built-in glass holder has integrated lighting as well. The L shaped bar creates a moment of social and cultural exchange.



CAMBIO BAR

PYER MOSS

“FASHION WITH A CONSCIENCE”

Information

Project Type : Exhibition

Location : New York

Date : 2020

Type : Academic group project at Pratt
Institute

Skill : Rhino, Autocad, Photoshop
Illustrator

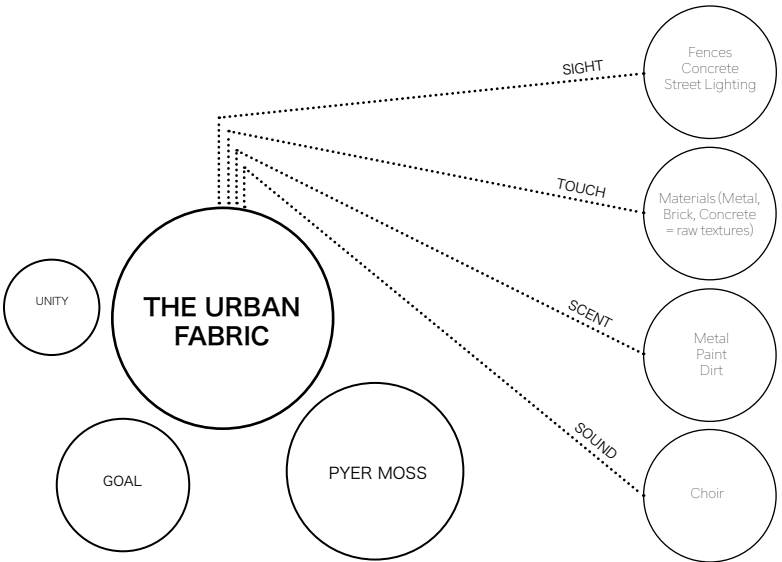
Description

Created by the avant-garde fashion designer Kerby Jean-Raymond, the brand Pyer Moss celebrates the Black Experience as a tool for empowerment through fashion. His provocative designs often represent an “urban” edge, and render an homage to Black heritage, celebrating its cultural strength and passion. Pyer Moss interprets fashion as more than form and material - as an authentication of identity.

Fashion with a Conscience features selected pieces from Pyer Moss’ “Normal” collection, and honors the career and culture of designer Kerby Jean-Raymond.



MAPPING OUT IDEAS BASED ON BRAND RESEARCH AND THE COLLECTION "NORMAL"



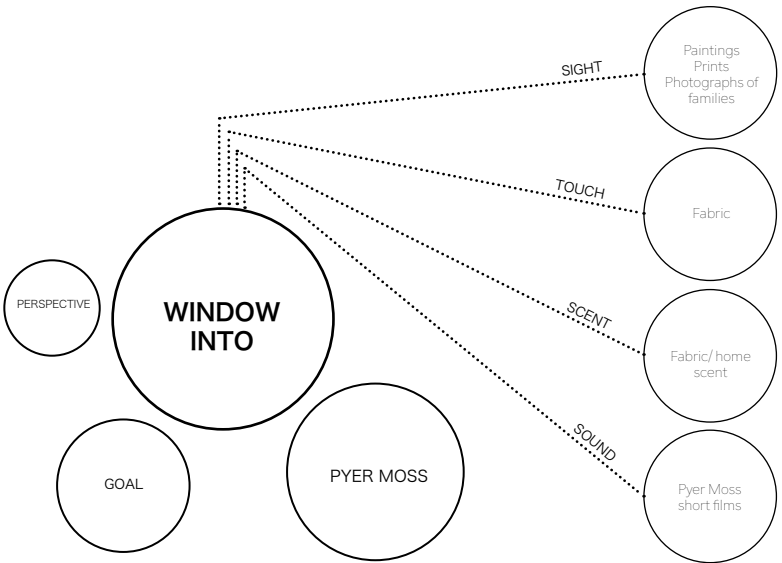
urban fabric as the setting in the exhibition



Highlight the Black neighborhood experience in an urban way through streets and courts



- reflecting the power in streetwear and its effortless style
- the idea of uniting through fashion- accessible fashion - high fashion streetwear



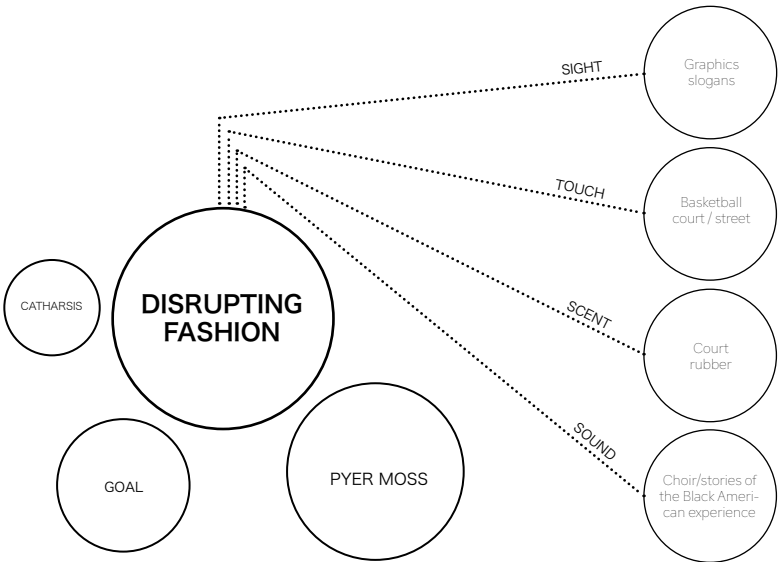
reflecting the domestic black experience and uniting black communities through an introspection into their lives



creating an intimate and personal interior setting that reflects the domestic experience



- pieces that have black portraits doing daily activities
- highlighting the artist -Derrick Adams



Social Justice + Black Lives Matter



- Demonstrate how Pyer Moss uses fashion to fight social justice and how BLM is an active part of his shows.
- To provide a catharsis through the court setting

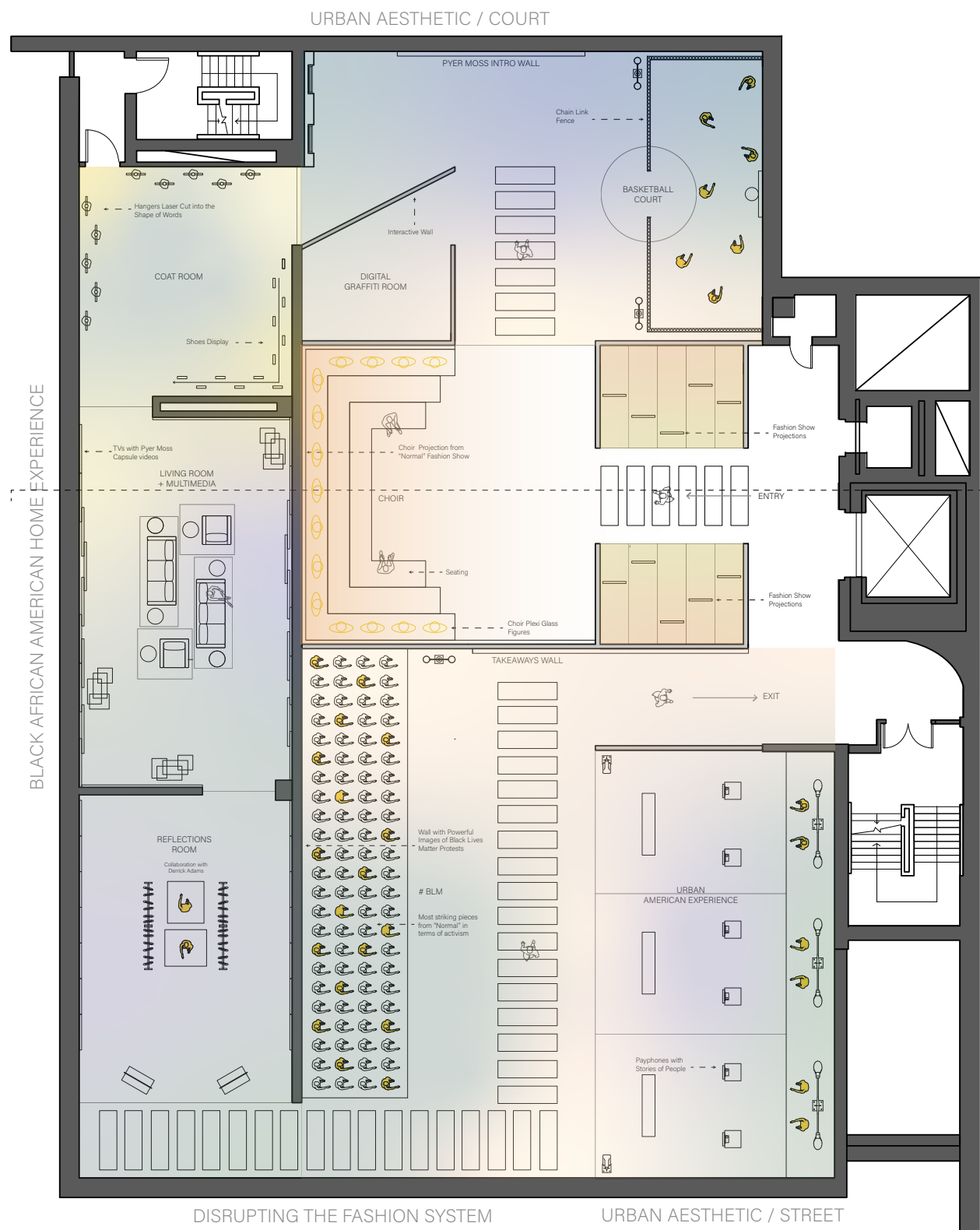


- Pieces from "Normal" that have typology directed towards Black Lives Matter
- Fashion as an expression

The collection, "NORMAL", as described by PYER MOSS

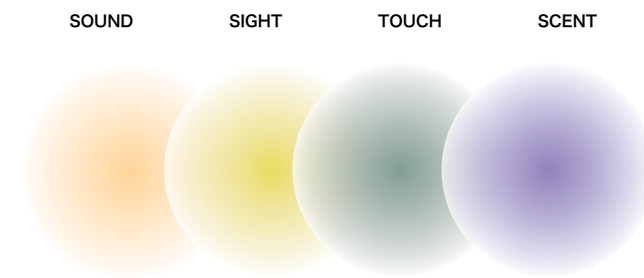
In "American, Also. Lesson 2" named "Normal" we focused on telling stories of the common black family experience. We led the installation with a runway show at the historic Weeksville Heritage Center. Followed by runway shows in Shanghai & Lagos. We followed up with the Director X led film "Seven Mothers." A film that focuses on the family life of Kerby Jean-Raymond and the 7 women who raised him after his mother passed away in 1994.





MAPPING SENSES THROUGH THE EXHIBITION EXPERIENCE

KEY TO SENSES PLAN



Museum-goers



Choir Plexi Glass Figures



Pyer Moss Fashion Pieces / Mannequins



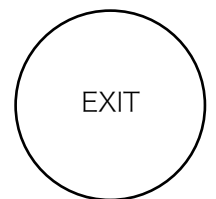
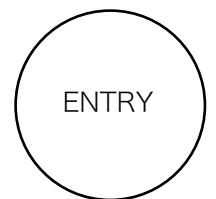
Crosswalk

NARRATIVE DEVELOPMENT

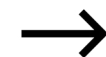
COAT CLOSET
THRESHOLD
FOR HOME
EXPERIENCE

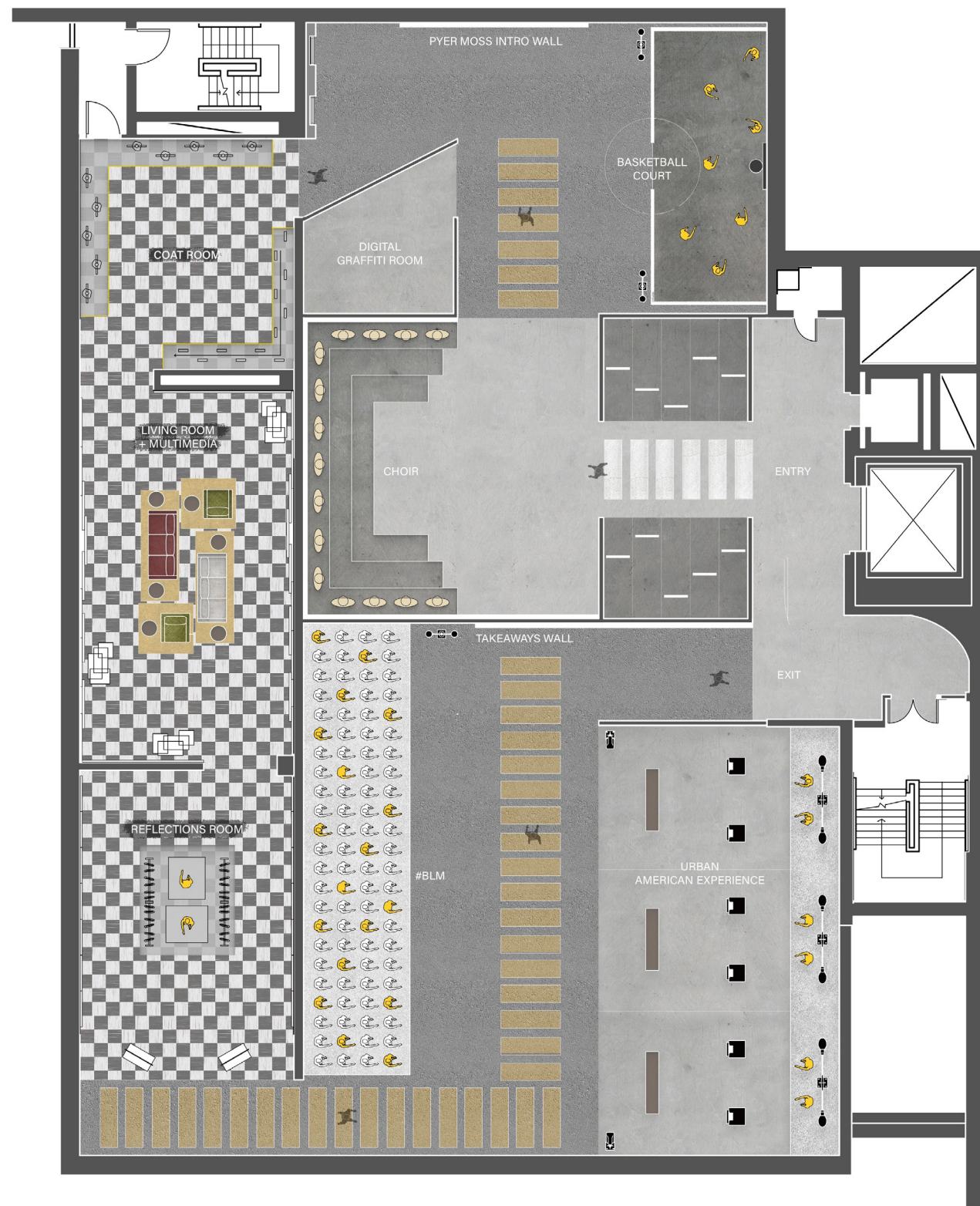


THRESHOLD TO
EXHIBITION
MINDSET



REFLECTIONS
ROOM
THRESHOLD
FROM HOME
BACK TO
URBAN
SETTING





RENDERED FLOOR PLAN

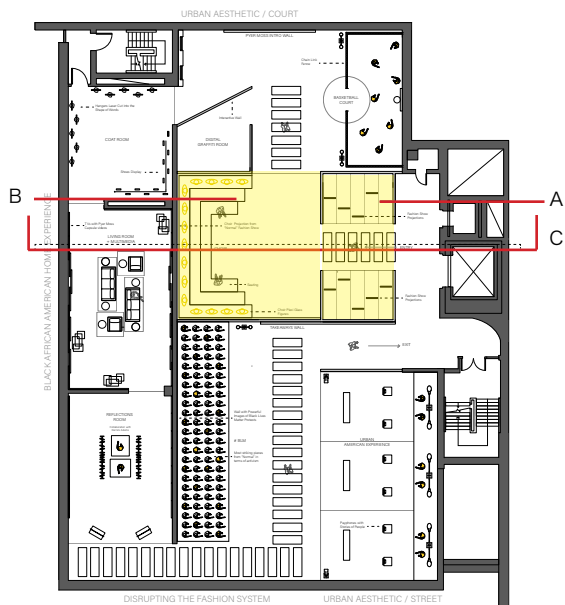


MATERIAL COLLAGE



Concept material collage illustrates the tactility and array of textures in the exhibition. The space is a playground for the senses rooted in research, analysis and fashion with a conscience.

The rendered floor plan illustrates the transition from the urban exterior into the tiled interior home space.



A - The entry threshold is designed to have a dropped ceiling with dynamic moving panels with models wearing the “NORMAL” collection. The dropped ceiling opens up into a large immersive choir space.

B - The visitor is greeted by the choir so that there can be an immediate immersion into the brand this is Pyer Moss. This was inspired by the short film based on this collection as well as the presence of choirs in every Pyer Moss fashion show.

C - The section illustrates the entry threshold ceiling manipulation, immersive choir space and living room.



CHOIR STOOP (B)



SHORT SECTION (C)



ENTRY THRESHOLD (A)

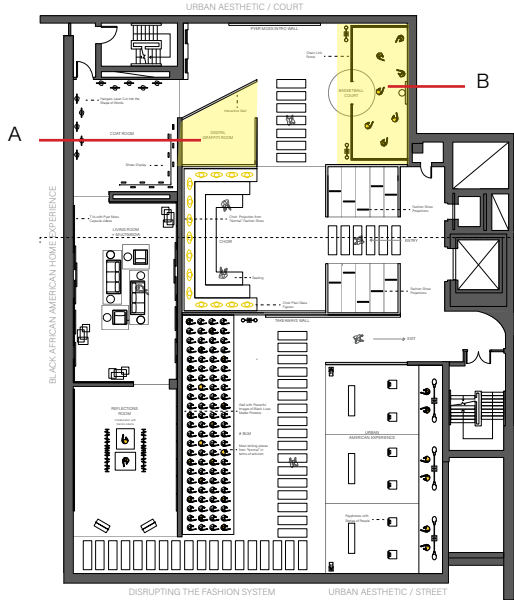


COURT SIDE DISPLAY (B)

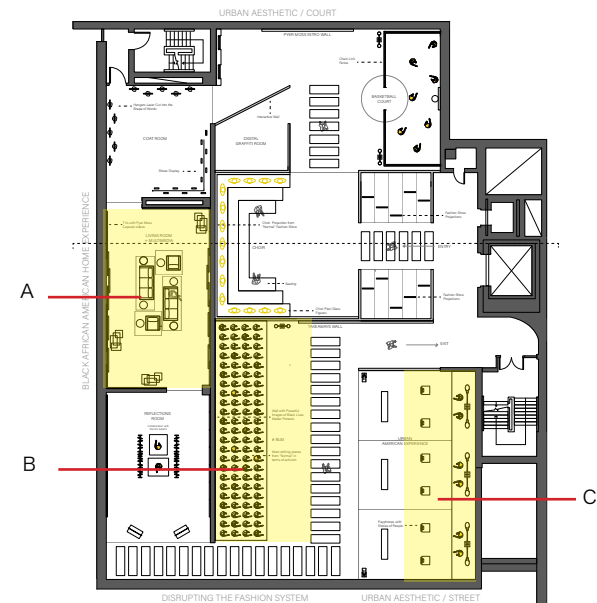
A - The digital graffiti space is an invitation to the visitor to be part of the creative process and to integrate back into the urban context which has been Pyer Moss's playground.

B - The court-side display is used to showcase the athletic wear of the collection. Kirby calls on memories of playing basketball in street side courts. We echo that same sentiment here as a tribute to this iconic Black American experience. We use the court as a space of catharsis to draw a parallel to the "NORMAL" collection.

Thus, these spaces begin to tell a story of the brand that is Pyer Moss.



COLLABORATIVE DIGITAL GRAFFITI WALL (A)



A - The T.V. room brings the visitor to a more intimate setting to not only provide further insight into “NORMAL” but also to showcase Pyer Moss’s digital content and short film on the collection.

B - The protest display takes us back to the public urban setting . Pyer Moss empowers through fashion, using stories and experiences to weave his collections. This display includes many mannequins at varying heights dressed in this collection. The mannequins providing solidarity in numbers.

C - Opposite the protest is a continued urban story telling experience at interactive phone booths. Each phone has a unique experience of fashion and culture.



T.V. / LIVING ROOM EXPERIENCE (A)



PROTEST DISPLAY (B)



PHONE BOOTH EXPERIENCE ELEVATION (C)

POLYMORPHING PETALS

Information

Project Type : Retail

Location : New York

Date : 2019

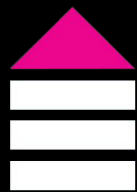
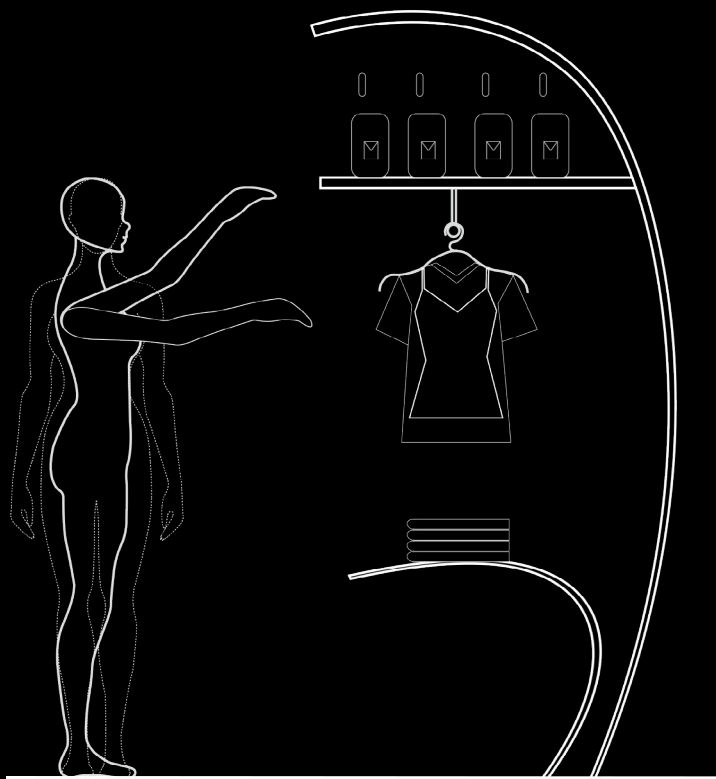
Type : Academic project at Pratt Institute

Skill : Model making, Rhino, Photoshop,
Illustrator, Autocad

Description

Housing Works thrift store design that is inspired by the companies values. An installation design that is a nod to the interconnectedness of the Housing Works community. The design is meant to be an immersive experience that is derived from the structure of the organisatio. Polmorphing Petals is an organic aggregation of engineered petals that come together in varying planes to create a boundary condition. This porous boundary is designed with the function of creating space and as a display system. The design is a confluence of form and function.





HOUSING WORKS

Housing Works is a New York City based non-profit fighting AIDS and homelessness. The charity is well known for its entrepreneurial businesses including a chain of Thrift Shops, which supports efforts to end AIDS and homelessness. They are also known for their social justice activism.

Anthropometric analysis to understand retail displays to design for the Housing Works thrift stores.



Bass wood bending experimentation with scale, thickness and form

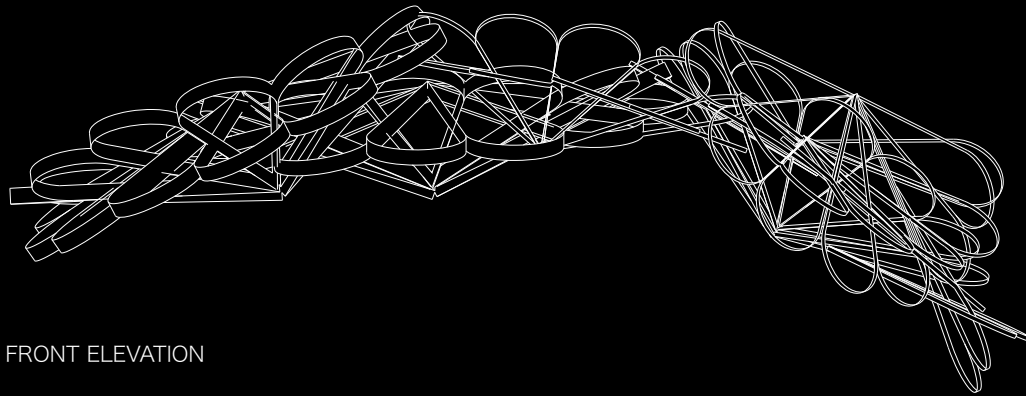


Thicker bass wood bent into a loop

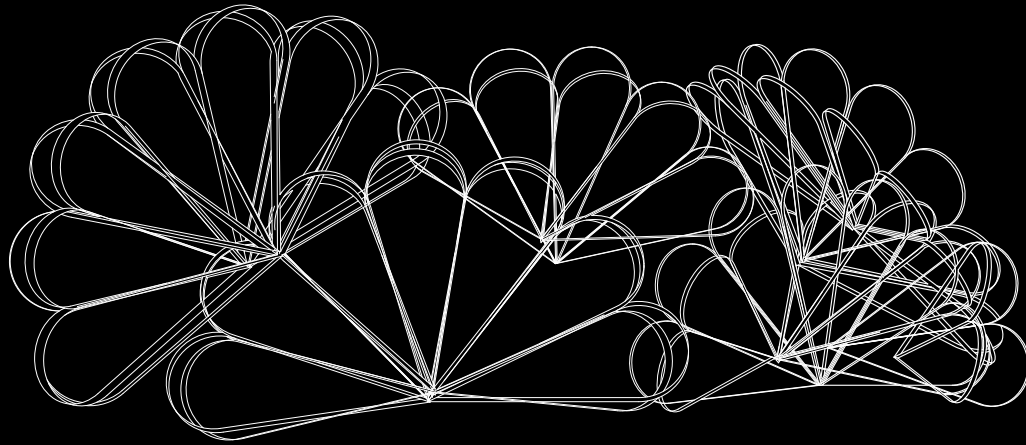


Creating loops fastened with copper wire to create an aggregation of loops

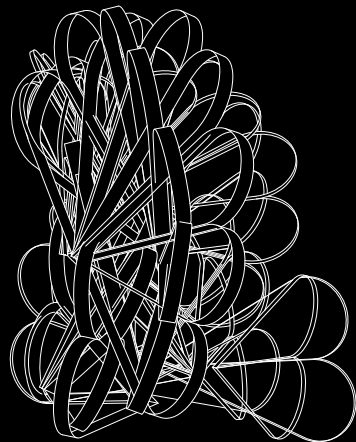
PLAN



FRONT ELEVATION



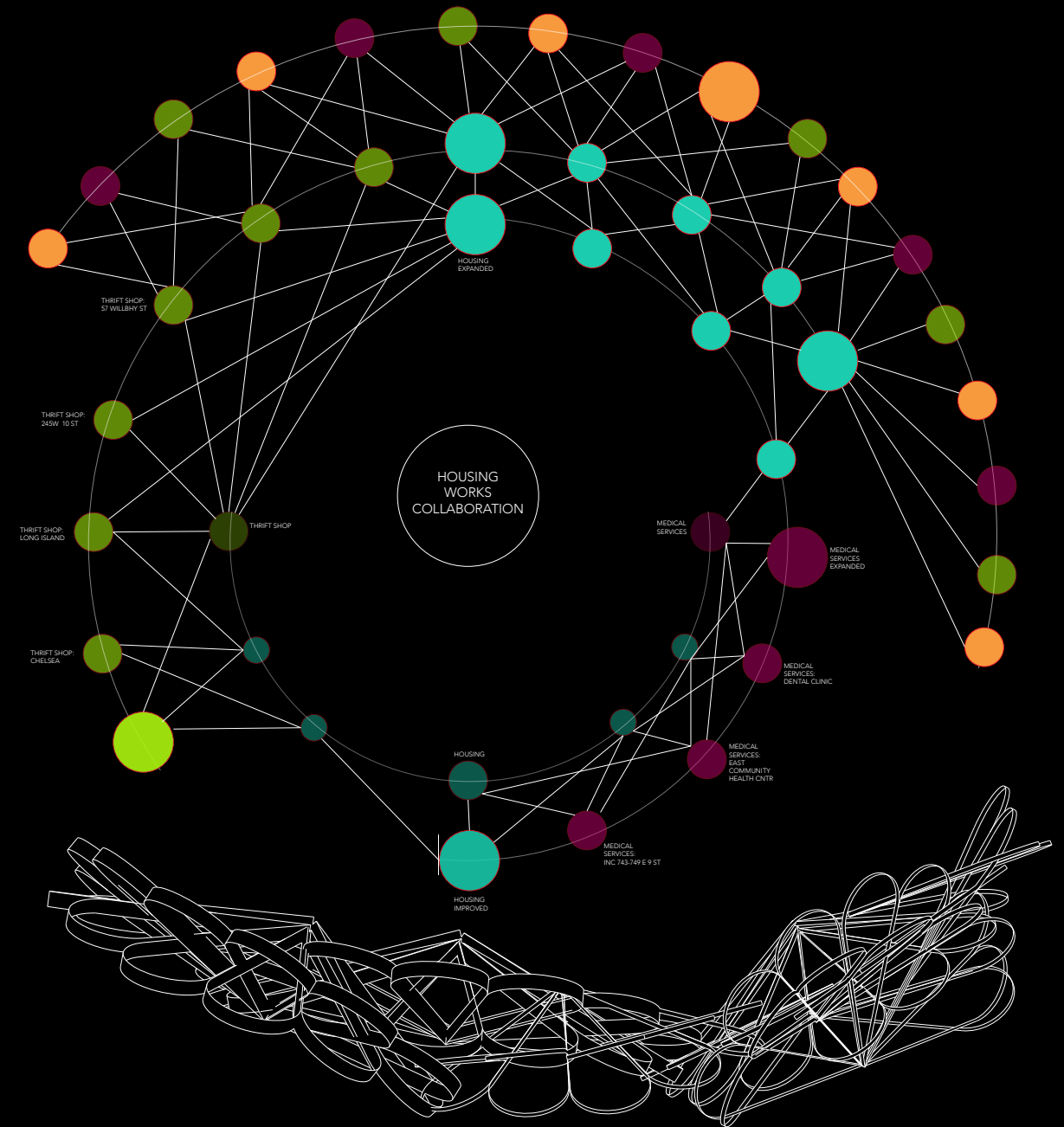
LEFT ELEVATION



COLLABORATION

Housing Works as an organisation has grown exponentially over the years due to their business strategy of collaborating with different facets that could help them grow a larger revenue and ease their housing costs. They have expanded their services to thrift shops, bookstores, cafes, medical services in several locations all around New York and Brooklyn. Their company boards include experts from a large array of fields- media, retail to name a few. Hence, collaboration has been the key to their success and growth.

HOUSING WORKS COLLABORATION DIAGRAM

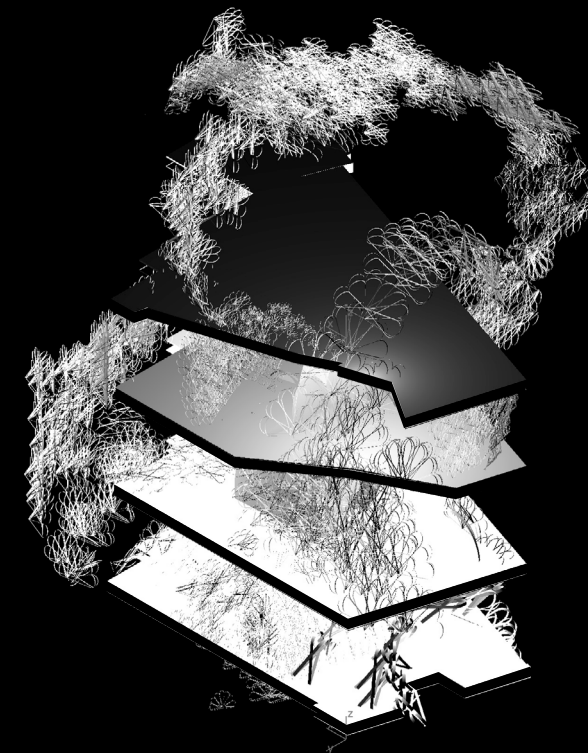
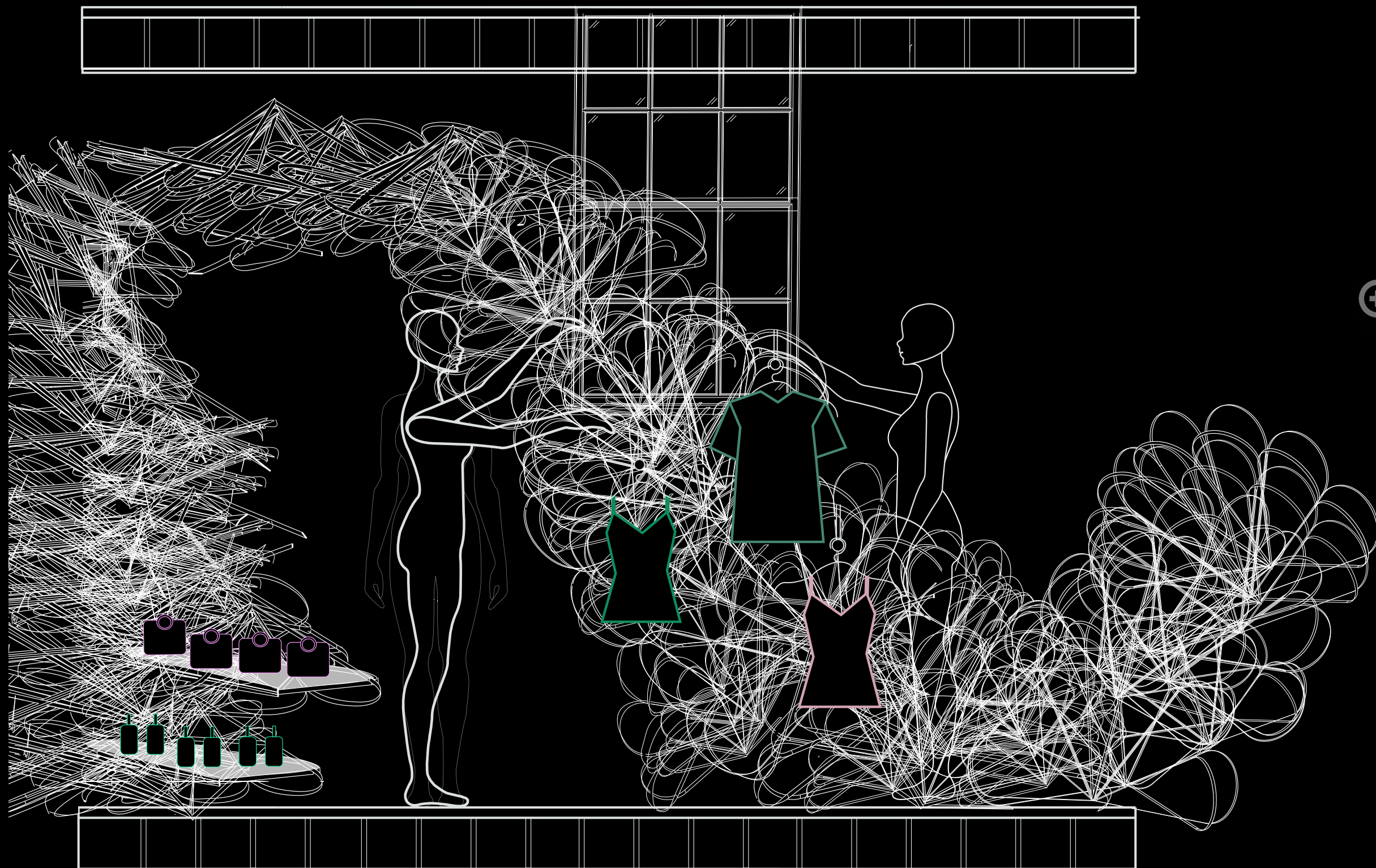


Final boundary condition // Polymorphing Petals

This design makes uses varying thickness, scale and axes to create an organic multiplying form.

The model is made from bent bass wood and copper wire connections





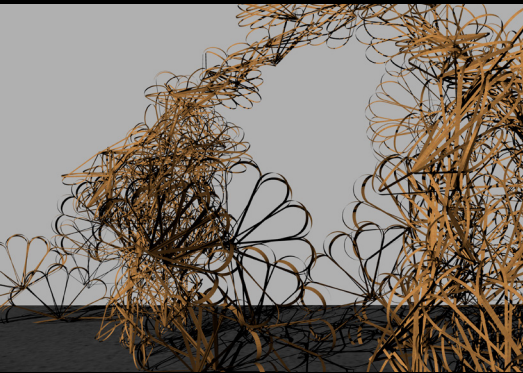
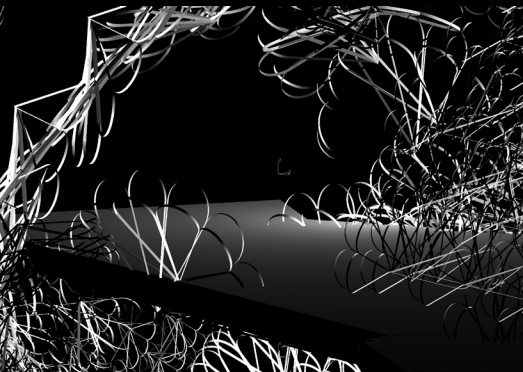
The building axon captures the essence of the swarm by illustrating how the petals inhabit the space.

The section is a detail view of the 3rd floor.

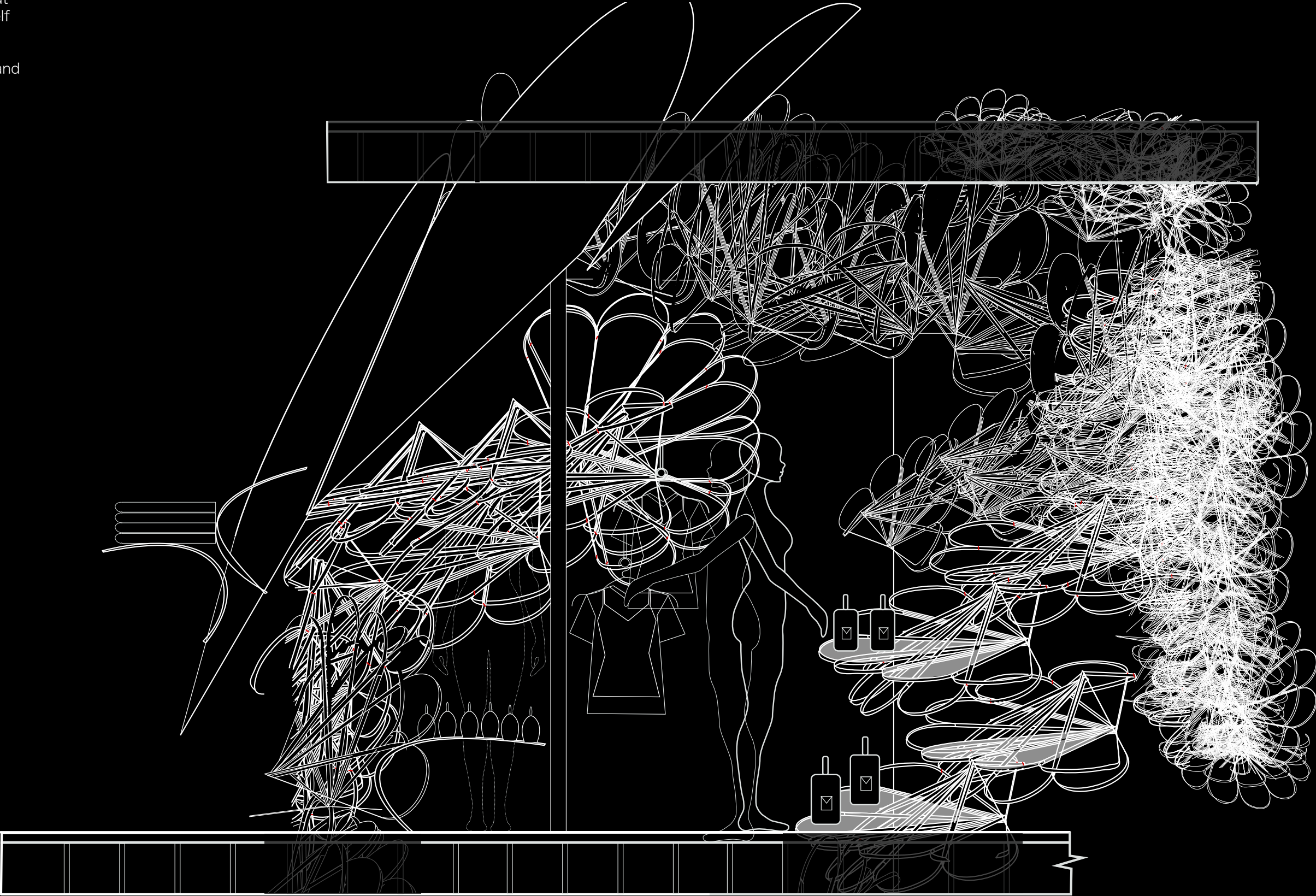
This section shows the functional use of the boundary in the thrift store setting.

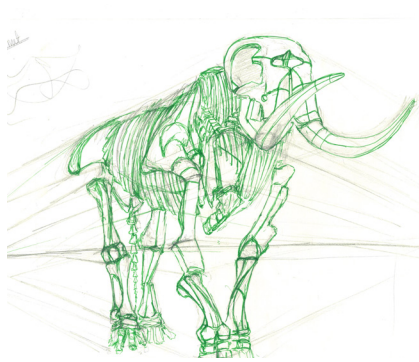
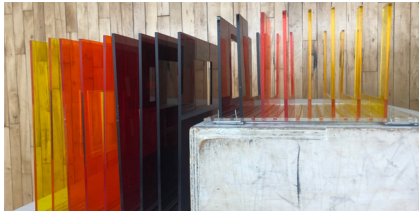
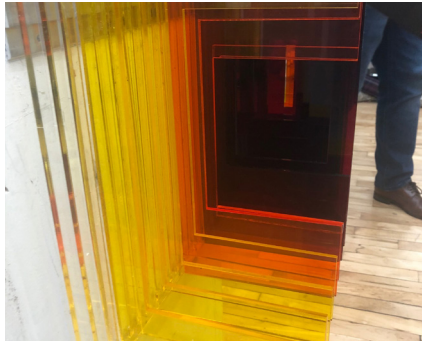
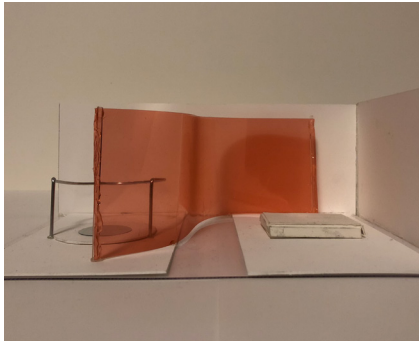
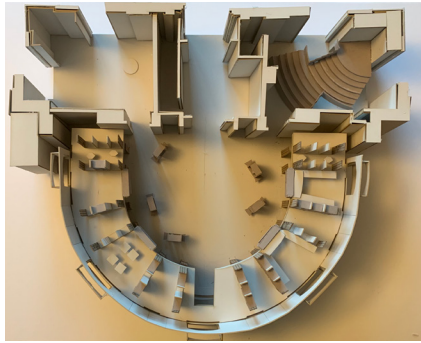
The petals at changing axes divide space but also form displays to hang clothes or to shelf objects.

The section illustrates the swarm of petals and the immersive nature of the installation.



CONCEPTUAL RENDERS

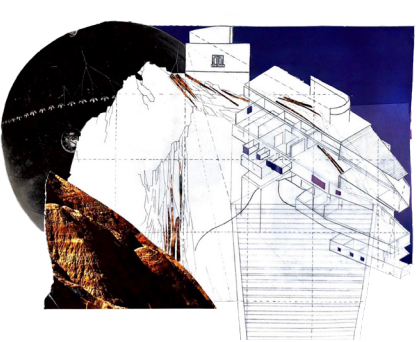
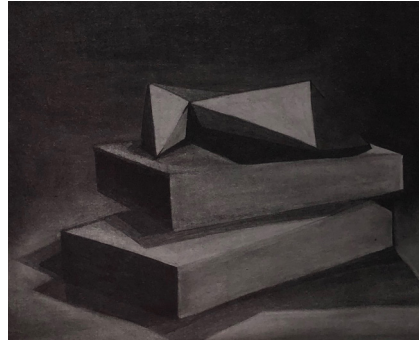
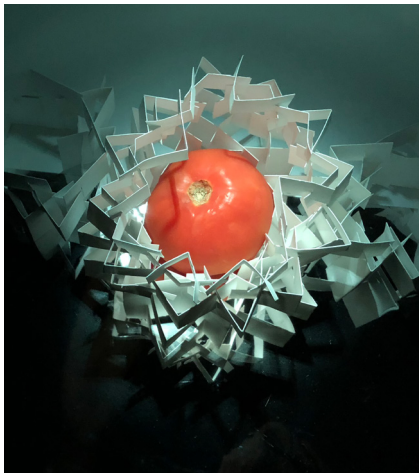
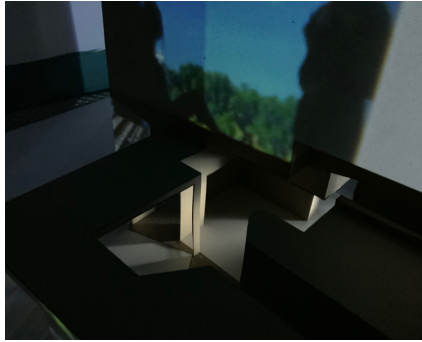
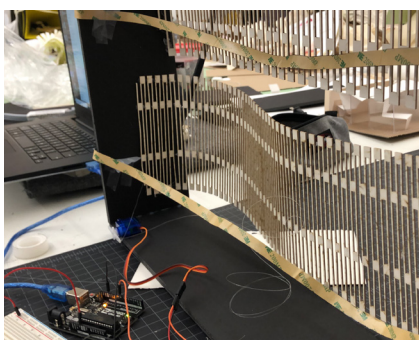
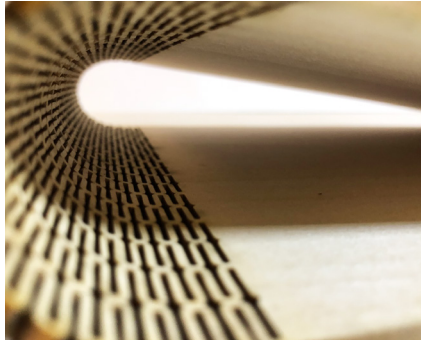
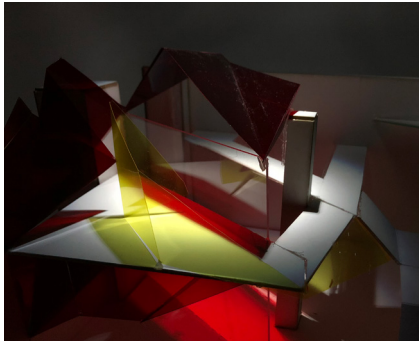
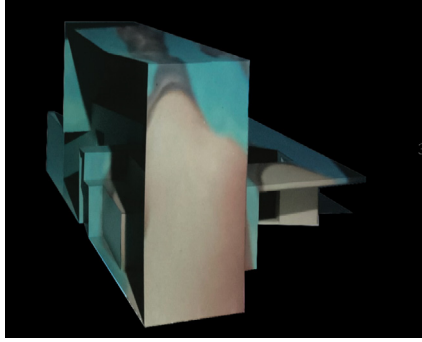
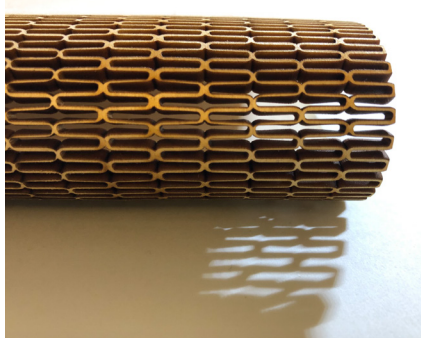
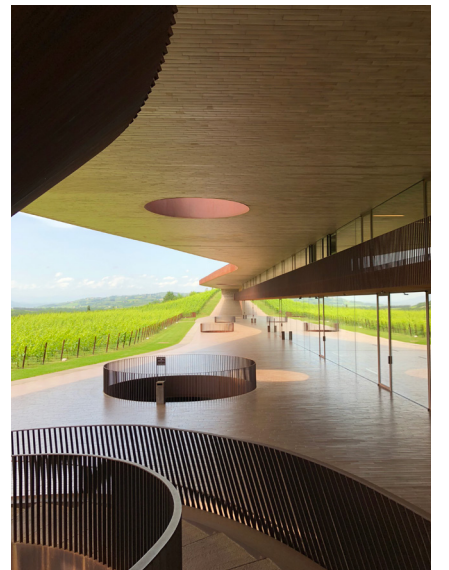
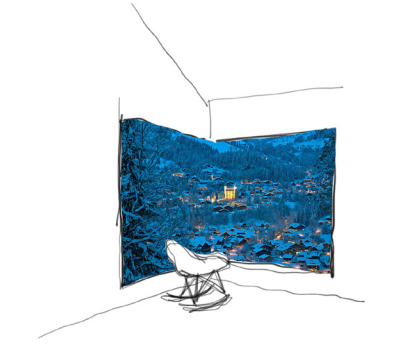
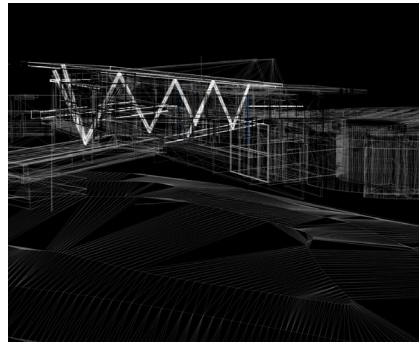
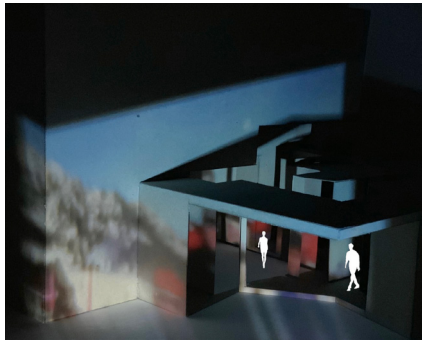
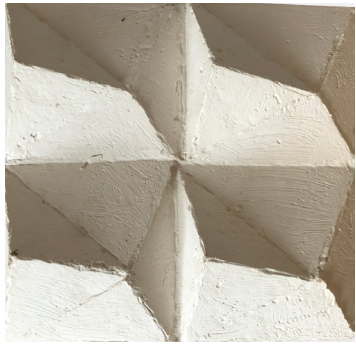
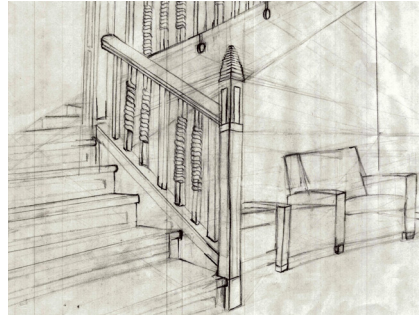
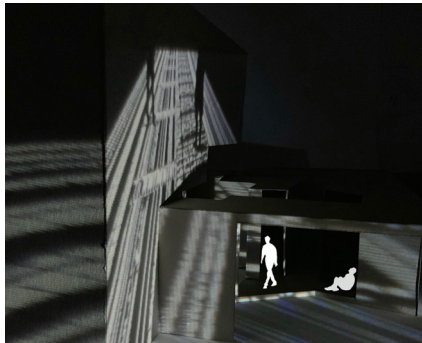
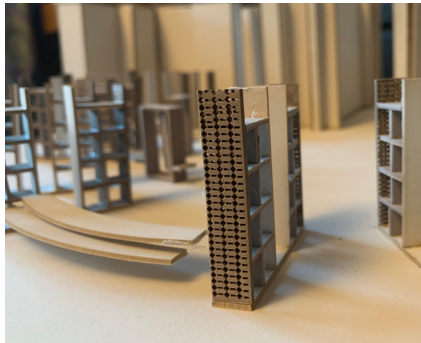




∞ EXPRESSION

MODELS/ SKETCHES/ PHOTOGRAPHY
SELECTION OF EXPERIMENTS OVER THE PAST
4 YEARS USING :

LASER-CUTTING/COLOUR ACRYLICS/PLASTER MOLDING/WOOD BENDING/
ARDUINO/MATERIAL SAMPLES/CNC/PROJECTION/RHINO/CHIPBOARD
SKETCH MODELS/PAPER FOLDING/CHARCOAL/PHOTOSHOP/ON SITE
DRAWINGS/LIGHT-COLOUR-FORM



M O D E L S S K E T C H E S P H O T O G R A P H Y

