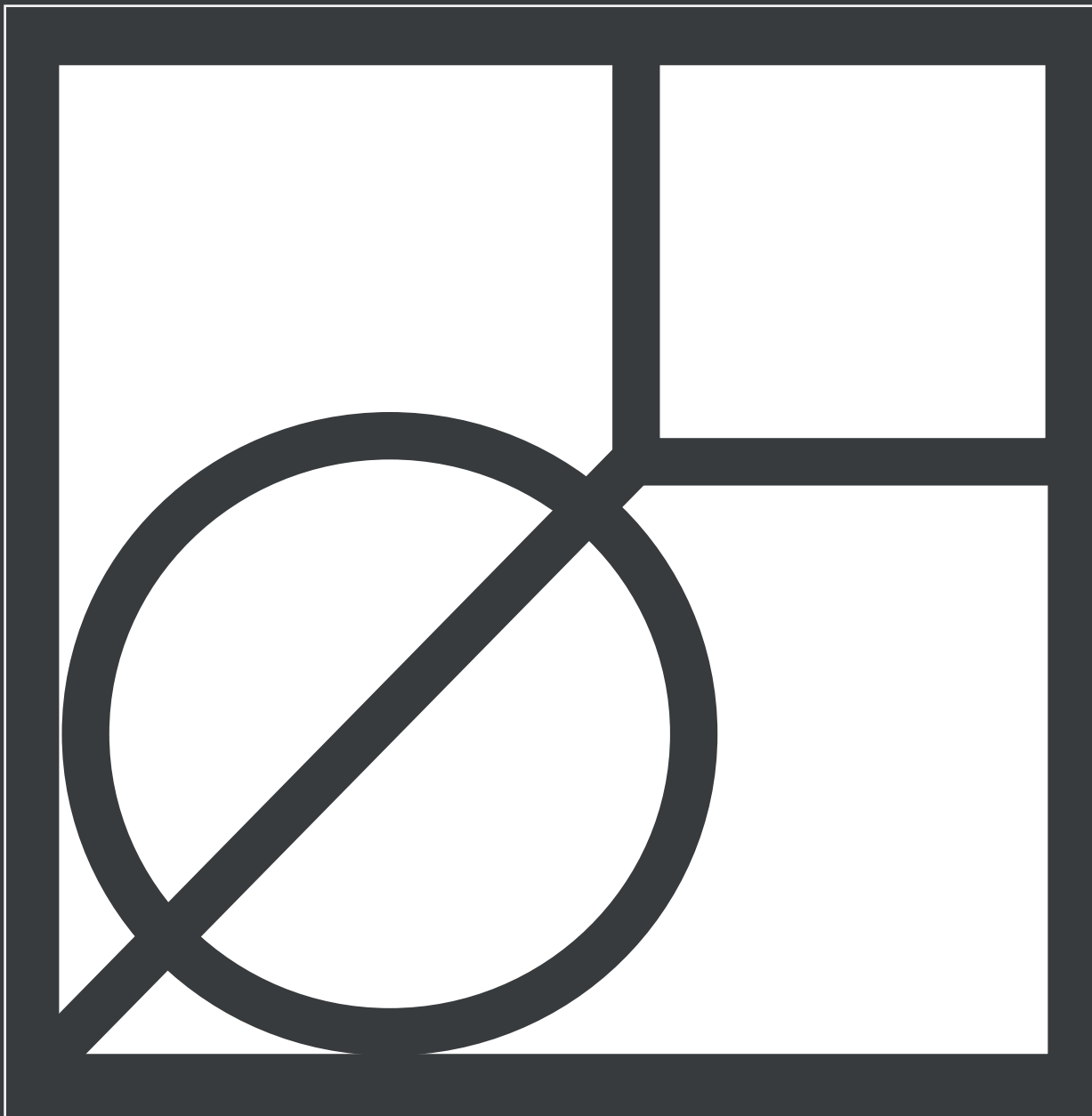


YENNA CHOI



PORTFOLIO

01

THE WATERLILY

title page.....	3
palette.....	7
plan.....	9
elevations.....	10
perspectives.....	11

02

INTER CONNECTED MOMENTS

title page.....	13
plan	17
RCP.....	18
section A.....	19
elevations	20
perspectives.....	21
section B.....	22

03

COEFFICIENT CLUSTERS

title page.....	23
plan.....	27
section	28
programs.....	29
palette.....	30
perspective.....	31

04

PARALLEL PIECES

title page.....	33
model drawings.....	37
site.....	38

05

FALLING FLOWERS

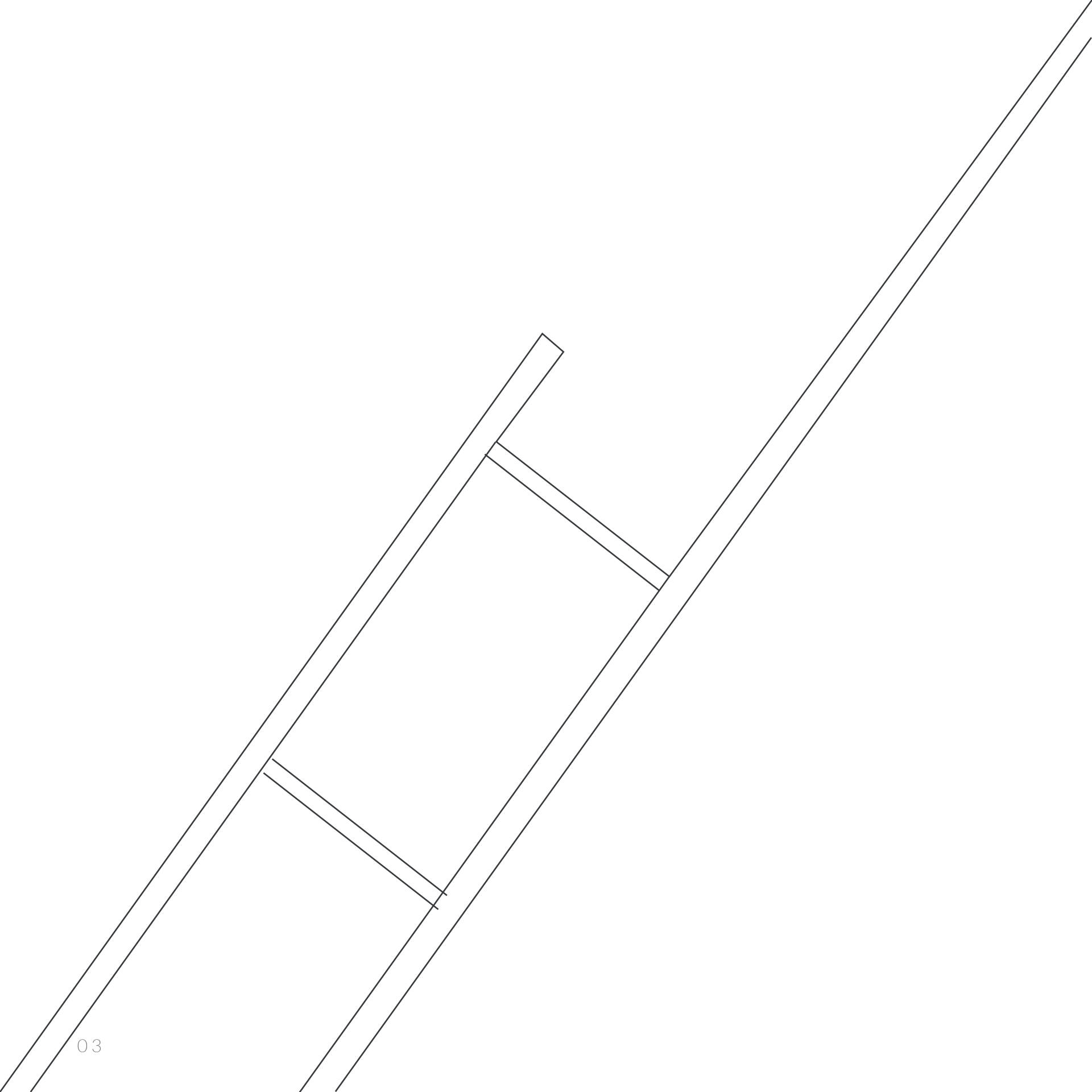
title page.....	39
seating.....	43
modules.....	44

06

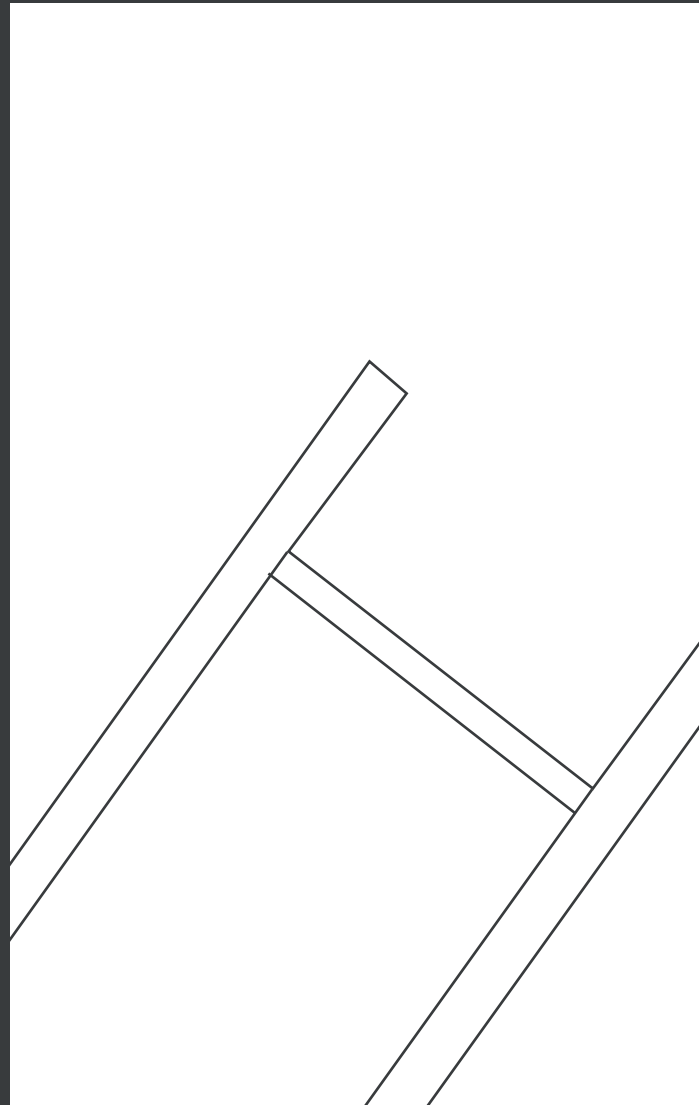
HAVEN

title page.....	45
community.....	49
stop motion.....	50
phases.....	51
residential.....	53
structure.....	54
perspectives.....	55

CONTENTS



THE WATERLILY



In this project, we were to use the Farnsworth house as our site and reimagine the space to fit a certain program, in this case, a cafe. We were also required to pick a painting and use it as a guide for material selections and lighting techniques to create an atmospheric condition that was similar to the art piece. The Waterlily cafe is based on Claude Monet's The Waterlilies.





The Waterlilies
Claude Monet

THE INSPIRATION

The Waterlily cafe is inspired by the painting The Waterlilies by Claude Monet. This piece not only influenced the color palette of the design, but also the atmospheric qualities achieved through materiality and its interaction with light. In my analysis of the painting I found there to be the following modes of perception: volume in the water, surface on the leaves, film in the impressionist marks, and illuminant in the seemingly glowing flowers.

COLOR DISTRIBUTION



(S) Surface (V) Volume
(I) Illuminant (F) Film

1. Dark Wood Veneer (S)
2. Purple Velvet (S)
3. Olive Green Velvet (S)
4. Brass Detail (I)
5. Concrete (S)
6. Iridescent Pink Wallpaper (F)
7. Black Leather (S)
8. Light Green Onyx (V)
9. Dark Green Marble (V)
10. White Linen (F)

OUTDOOR SEATING



LOUNGE SEATING



ORDER COUNTER



TABLE SEATING





PROGRAM DISTRIBUTION

Bar Seating 106 SF, OCC 7	Kitchen 95 SF
Table Seating 453 SF, OCC 14	Powder Room 35 SF
Outdoor Seating 485 SF, OCC 16	Counter and Register 102 SF
Lounge Seating 154 SF, OCC 5	



Front Elevation



Back Elevation



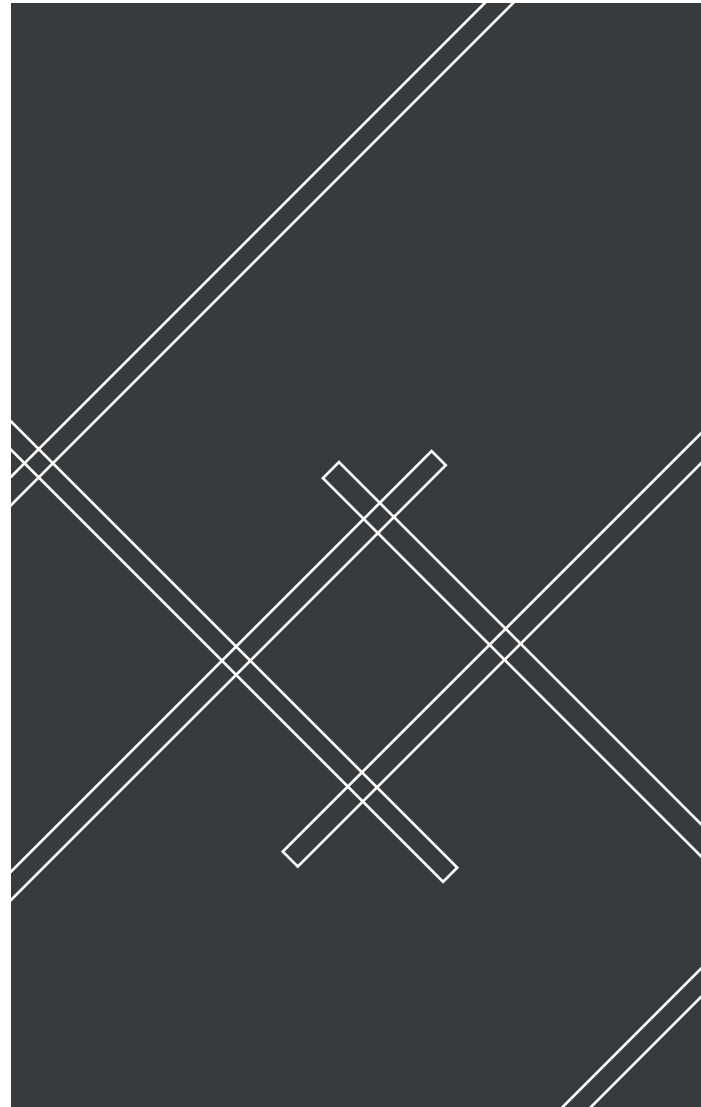
Right Elevation



Left Elevation



INTERCONNECTED MOMENTS



This residential project was designed to a specific clientele. In this case, my family consisted of four working women coming from Japanese and Chinese Heritage. In this residence, I attempted to blend the two cultures and fuse traditional and contemporary design for this multigenerational family. Through a modular pattern inspired by ancient east asian joinery, spaces are permeated and programs begin to interact with each other as an attempt to keep members of the family connected despite their independent schedules.

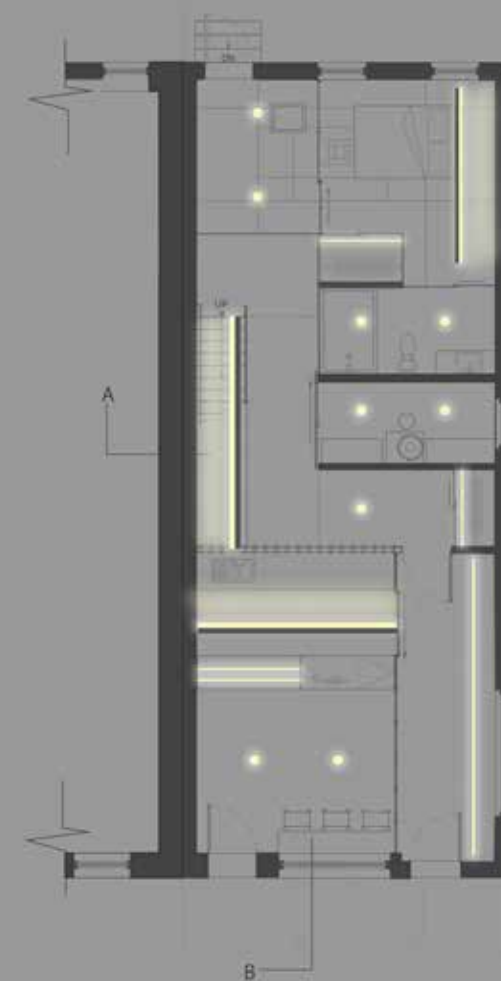




FIRST FLOOR PLAN



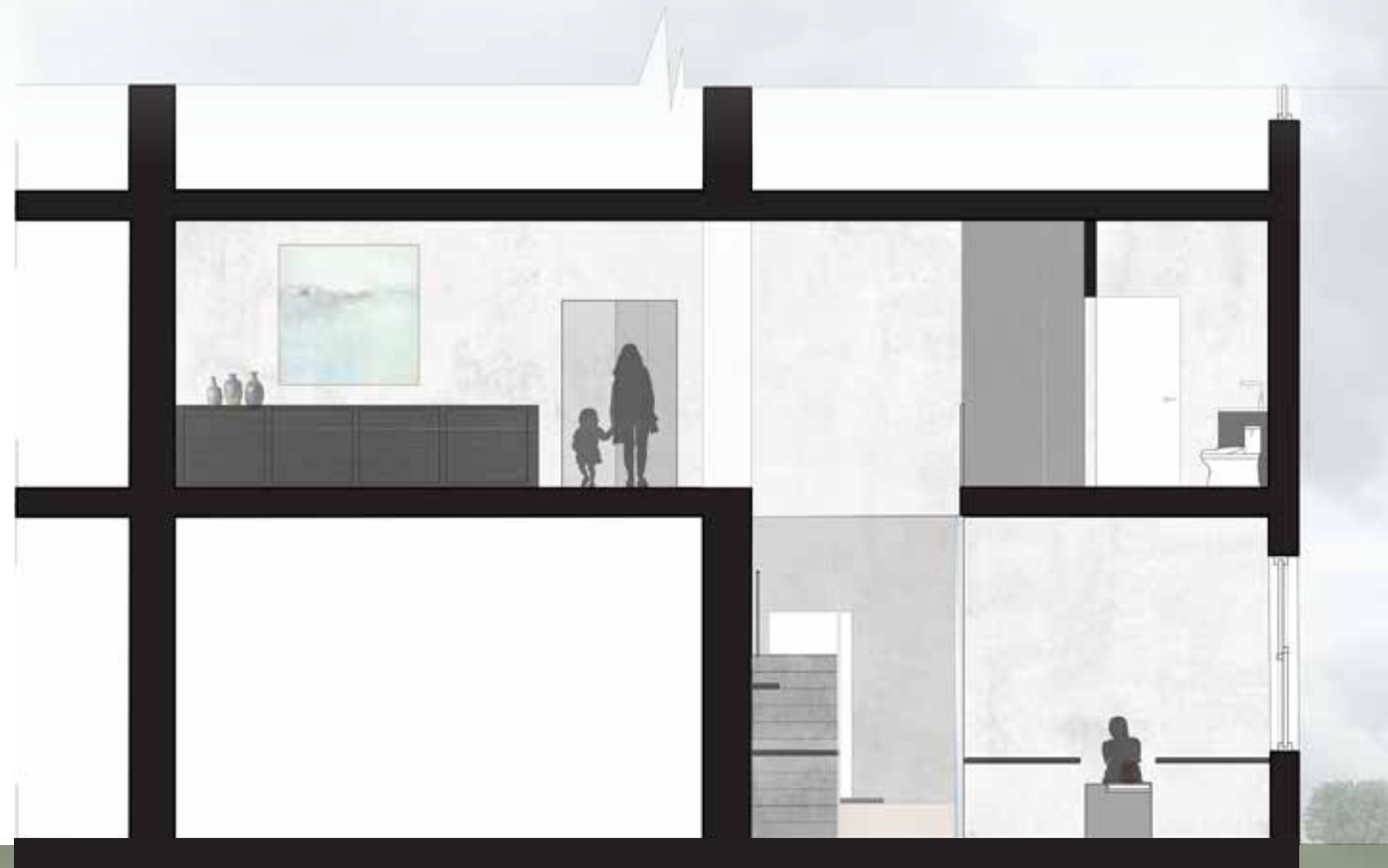
SECOND FLOOR PLAN



FIRST FLOOR RCP



SECOND FLOOR RCP

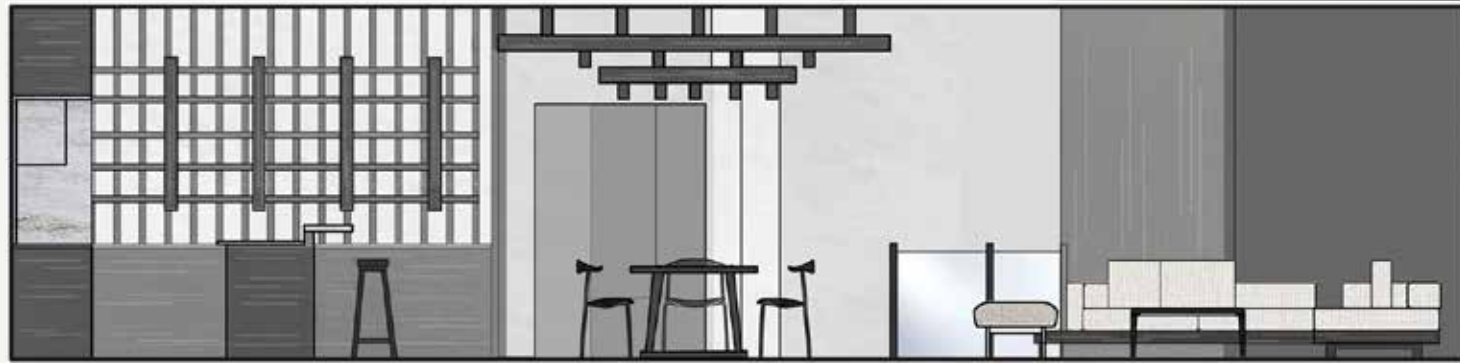


SECTION A



SECTION B

DINING ROOM ELEVATION



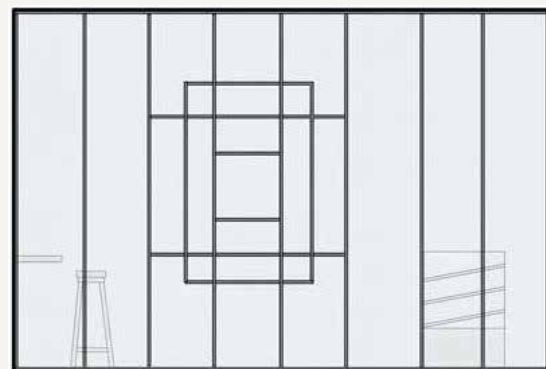
OFFICE ELEVATION

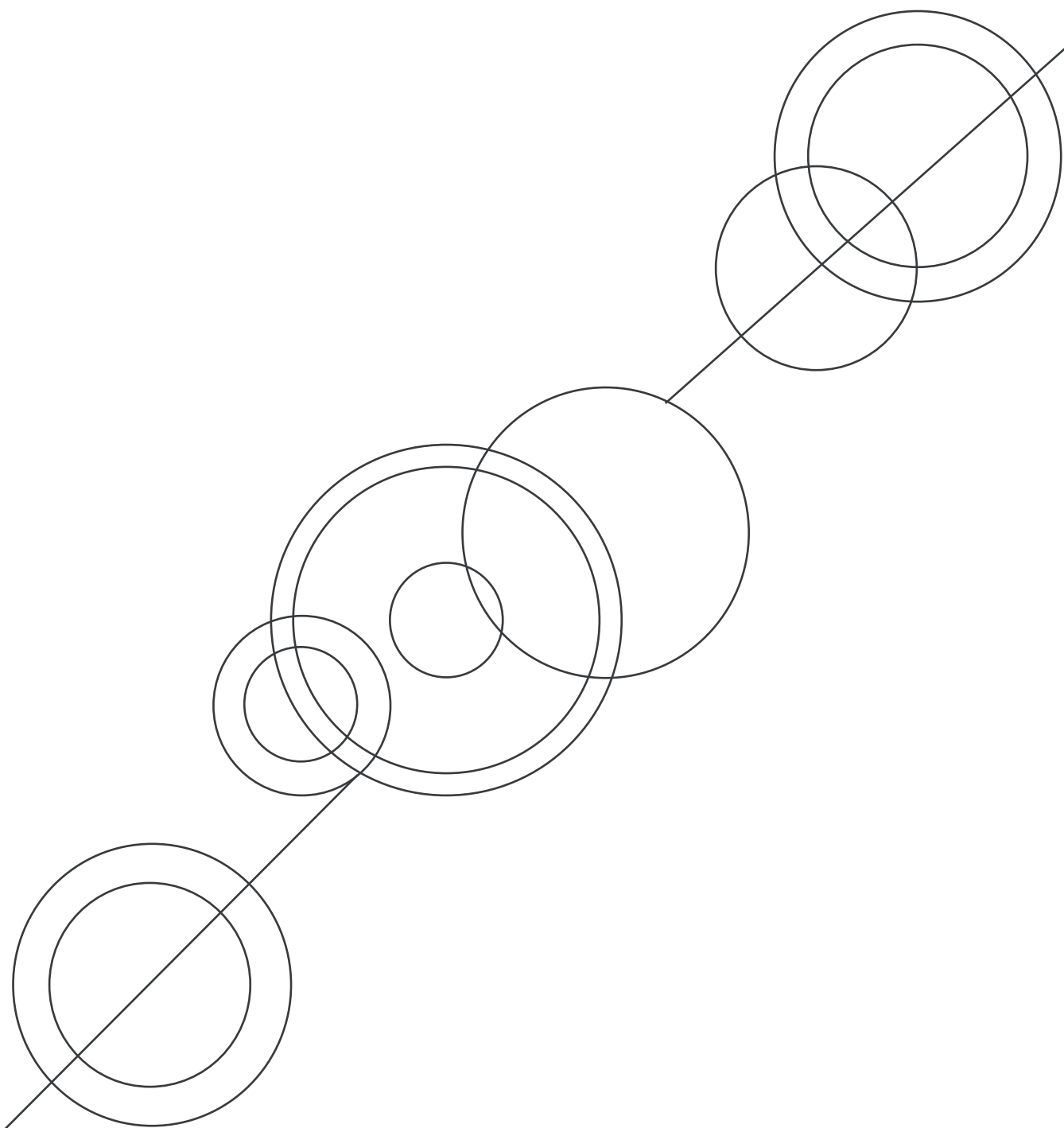


CAFE ELEVATION

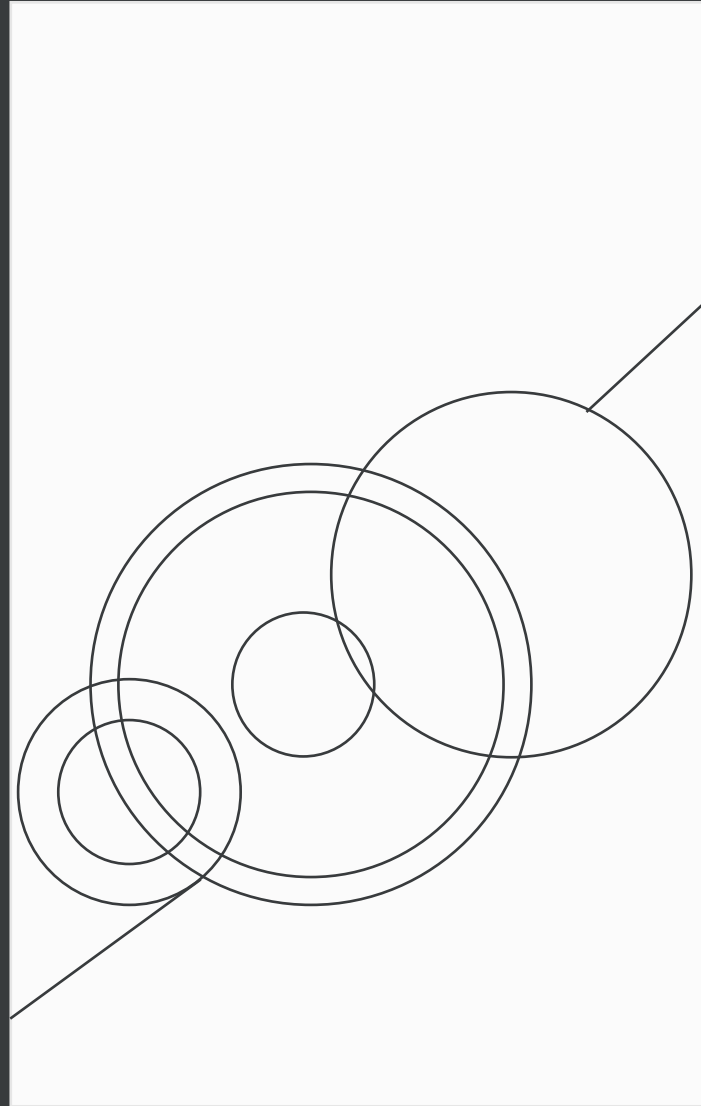


CAFE ELEVATION





COEFFICIENT CLUSTERS



This is an office project for the United Nations Department of Inclusion and Sustainability Development. Built on Sustainability Goal #17 : Partnerships for the Goal by fostering dialogue and collaboration between global institutions and making sure that a diverse set of voices are heard. This is the key to progress in meeting policies that push the other sustainability goals.

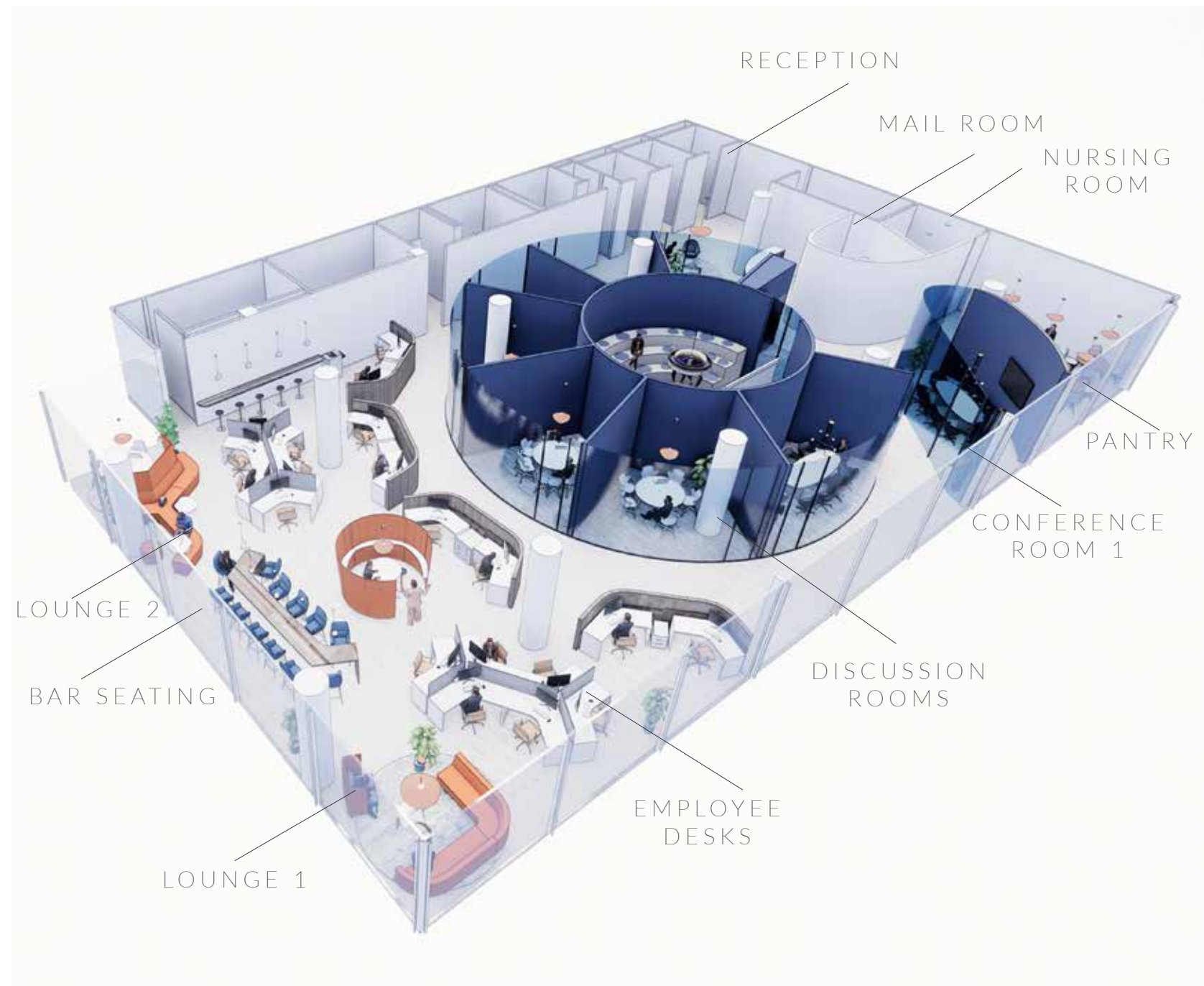






Coefficient Clusters is inspired by the movement of Burolandschaft, an office spatial organization method that promotes collaboration and fosters communication through open layouts. Also referred to as office landscape, the plan removes the rigid structure often found in traditional layouts and opts for a more organic freeflowing layout. Clusters of desks and other various work spaces can be found in the back of the building, close to the natural light provided by the windows. The layout centers around an auditorium open to both employees and the public to learn more about the DISD's Sustainability goals and practices.





PANTRY

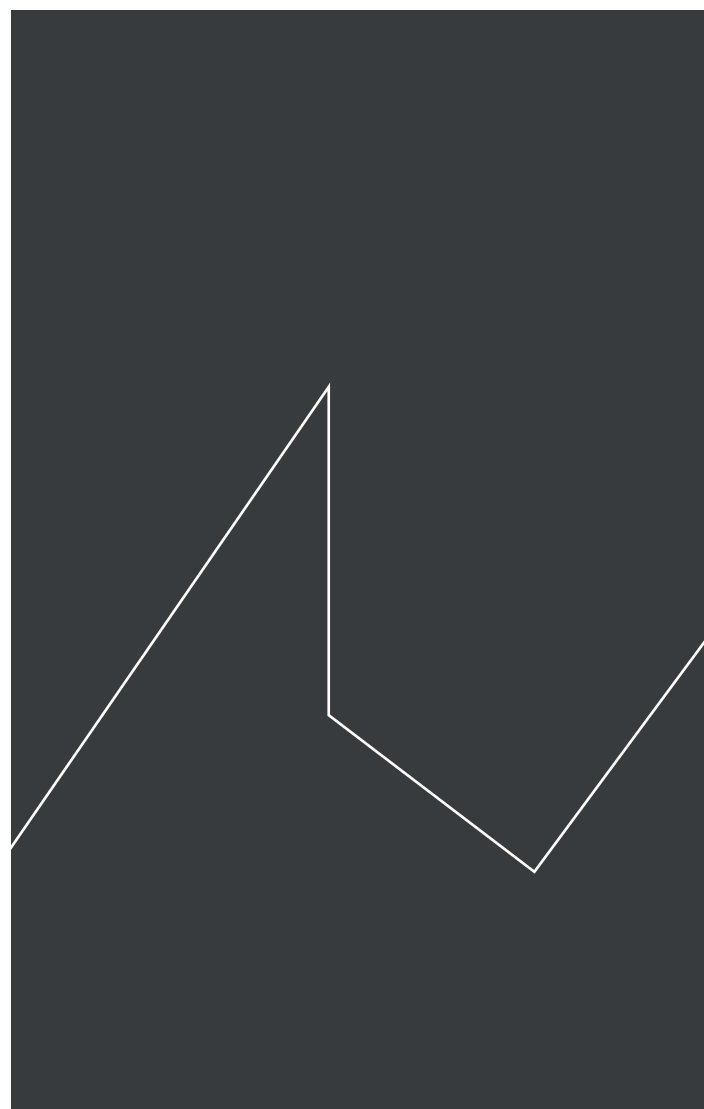


MATERIAL PALETTE

Drawing inspiration from the UN's logo, I chose blue as the main color to indicate collaboration. The blue is most concentrated at the central hub of meeting spaces spiraling out of the auditorium. On the other hand, spaces for employees, such as desk and lounge spaces, are indicated by orange. To align with the sustainability values of the UN, it was important to use sustainable materials such as recycled denim and reclaimed wood.

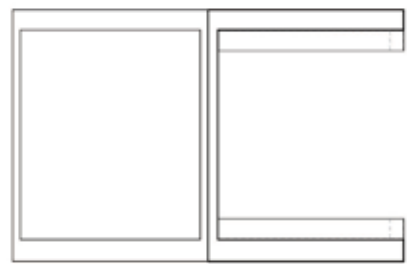
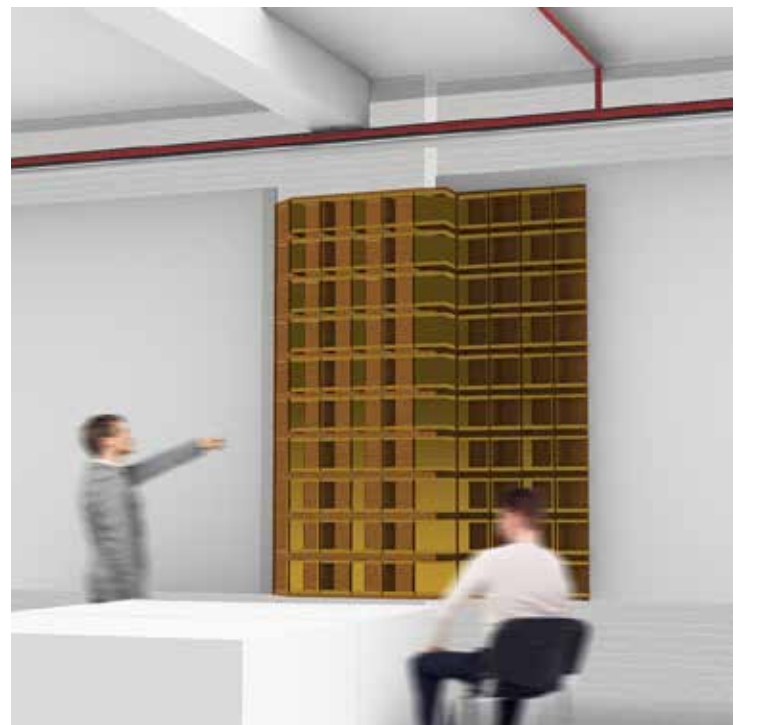
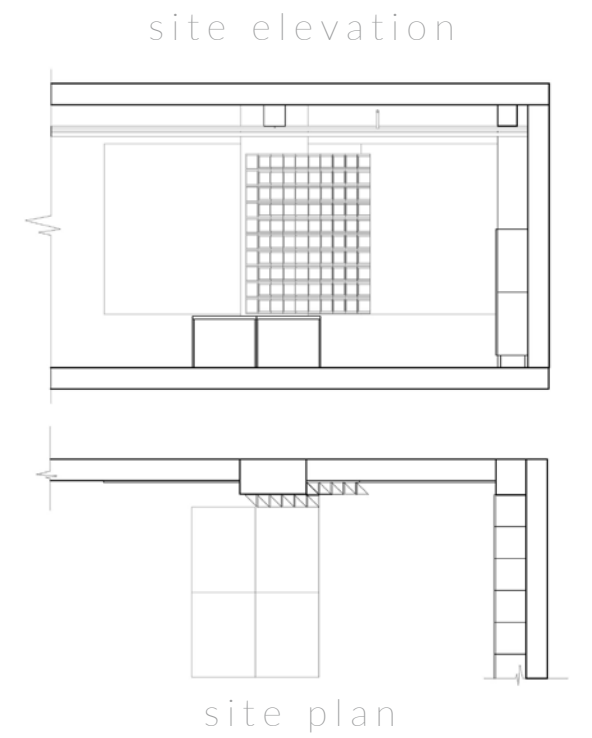
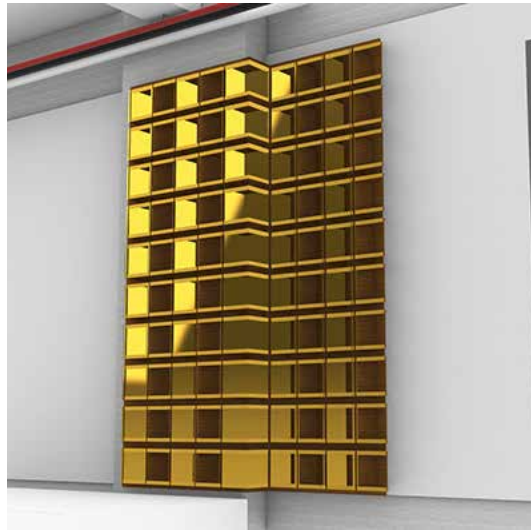


PARALLEL PIECES

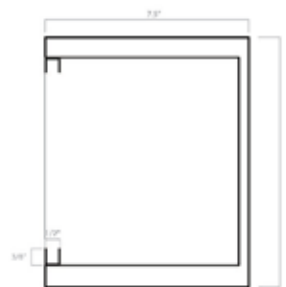


For this project we were asked to create a corner condition for our studio. Because our studio is overflowing with students' work, I wanted my condition to be able to function like a cubby system in order to open up work surfaces which tend to be crowded with tools and materials. By utilizing a modular model, the shelving system can fit one next to another, allowing for expandability depending on the number of students in the room. When two modules are combined, they create a square cubby for storage. The railings which also connect serve to create a sliding partition which allows students to protect their personal items.

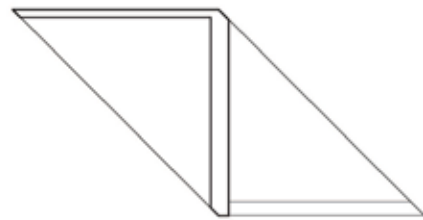




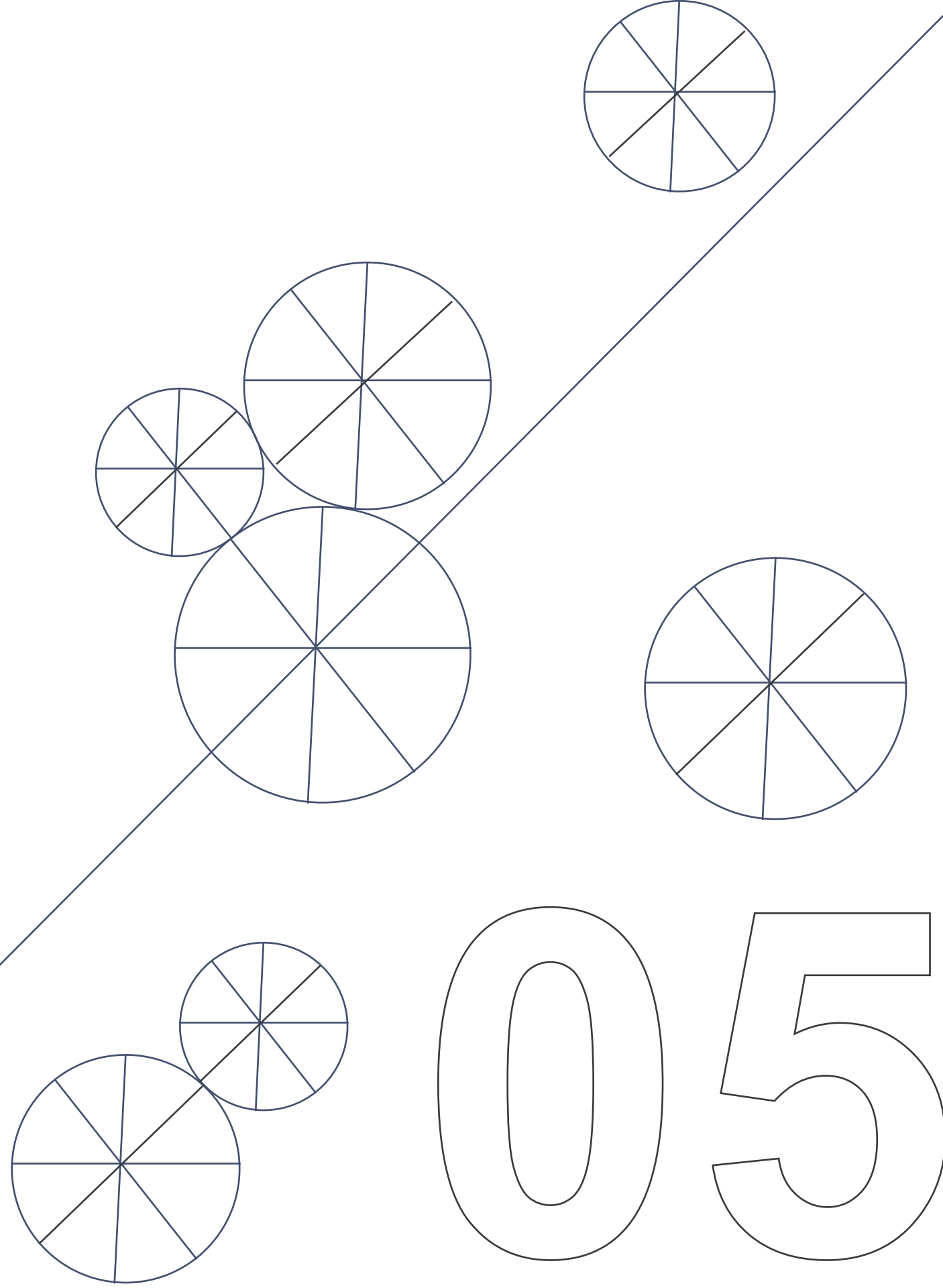
front elevation



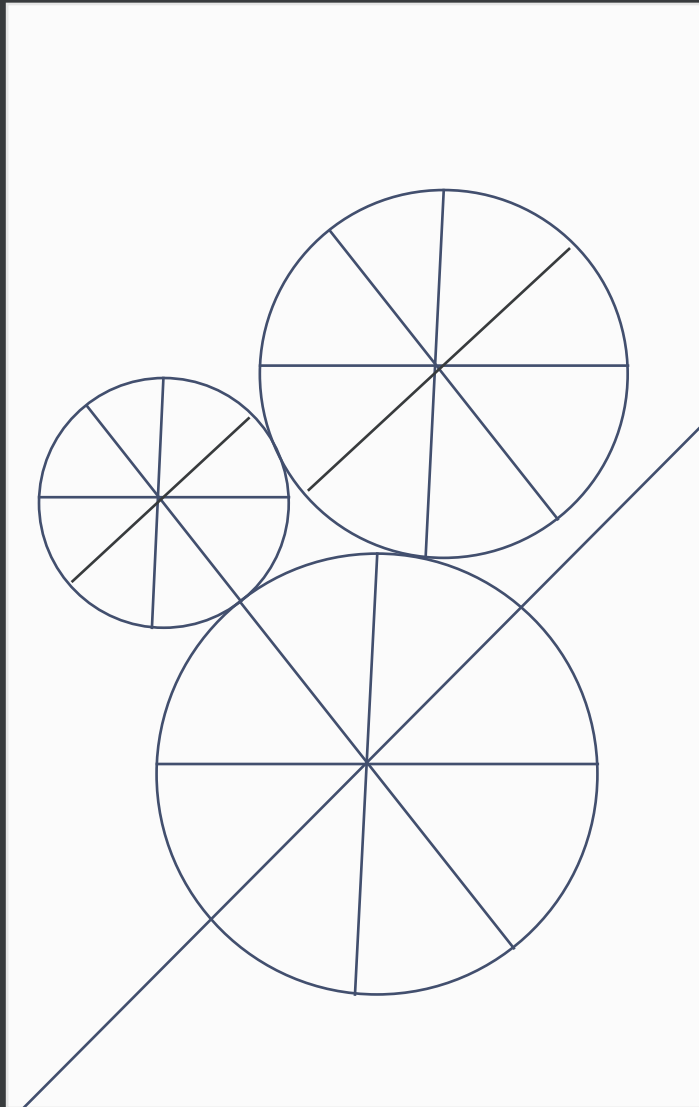
section



plan



FALLING
FLOWERS



A full scale curtain project designed for the United Nations Department for Inclusive Social Development. The project aims to not only block sunlight, but also provide insulation and additional floor seating for employees.



INITIAL STUDIES



The flower motif connect to one another and vary in size and depth. With these variations along with the difference in materiality, the curtain becomes its own composition. The heavier canvas is used primarily on the top and bottom where the motif is used most densely. The sparsity in the center gives the impression that the motif is falling like flowers from a tree. The thick canvas, when juxtaposed against the sheer cotton creates a strong contrast that makes the white flowers appear as if they are glowing under the sun. In addition, because the flowers are sewed to each other, the circular shape creates these perforations which allow for light to break through the small gaps. The curtain is purposefully made to be a couple feet longer than the height of the site window so that the fabric floods onto the floor to make a seating space for employees of the UN to enjoy when they need a break.

FRONT



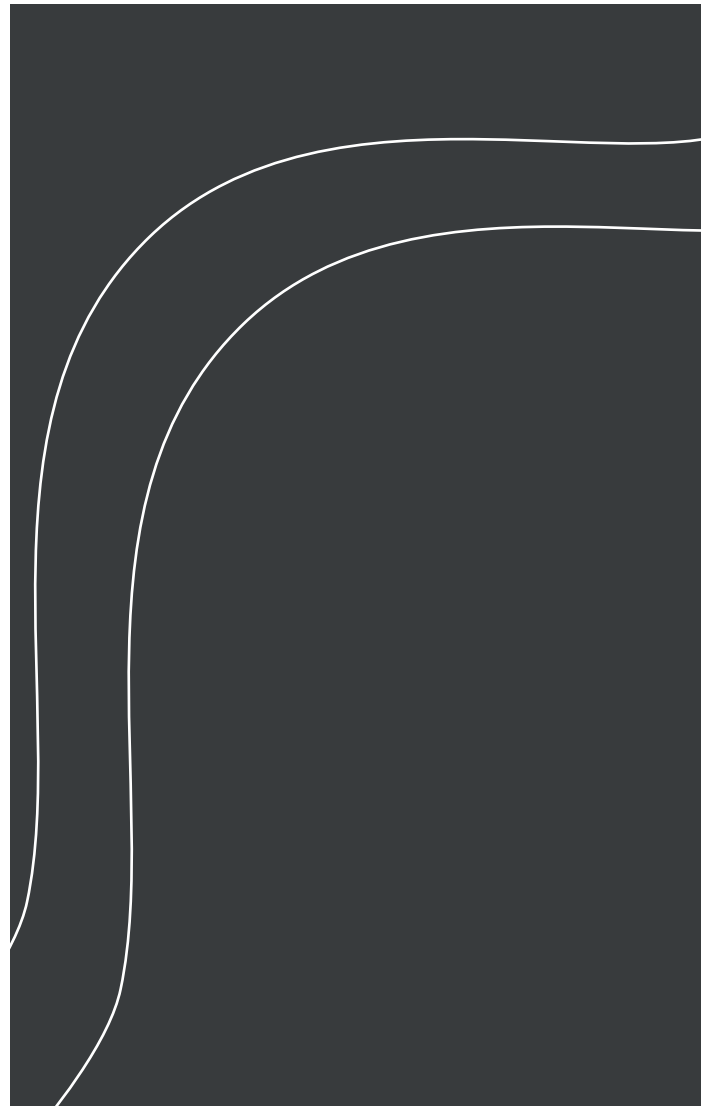
BACK



06

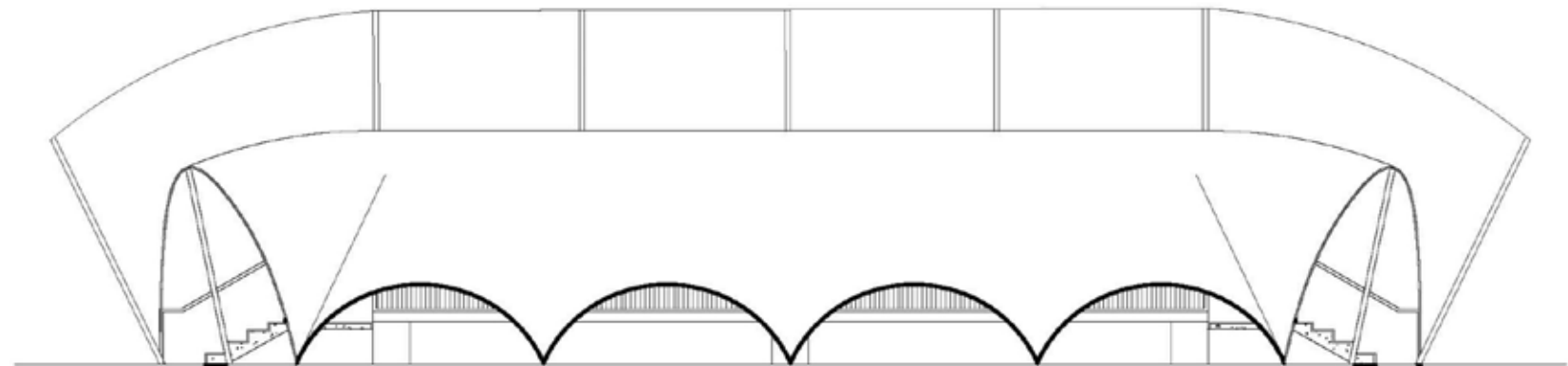


HAVEN

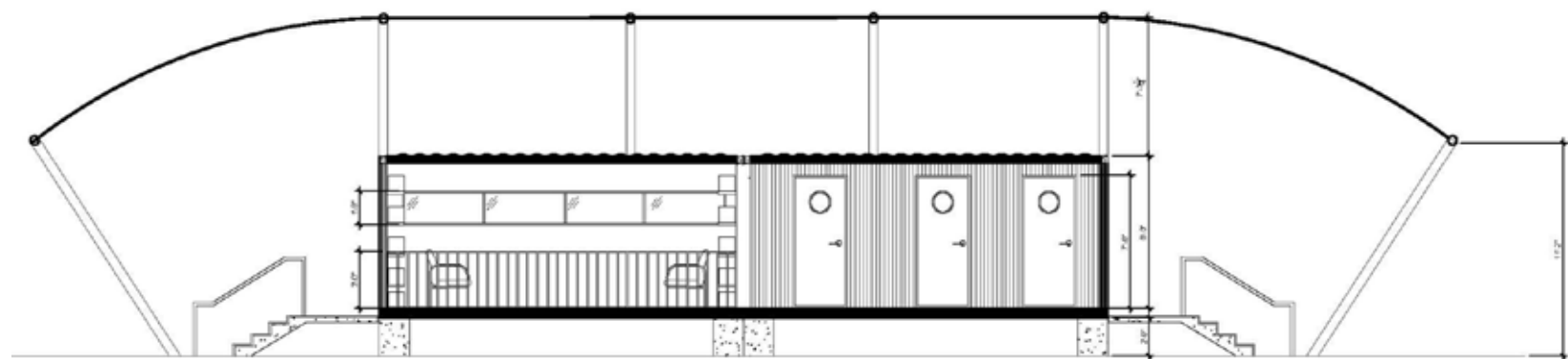


Haven is an alternative design solution to emergency housing that returns dignity to the community impacted. By following a three phase process, Haven makes the shift from temporary shelters to permanent housing a seamless process. The bedroom modules will be used as the phase 1 response: immediate temporary shelter. During this period, we move on to phase 2: interim housing. The structures contain containers on both sides and the median is captured by tensile material which allows light to diffuse into the space. The residential units will utilize the same bedroom modules from phase 1 .





right elevation



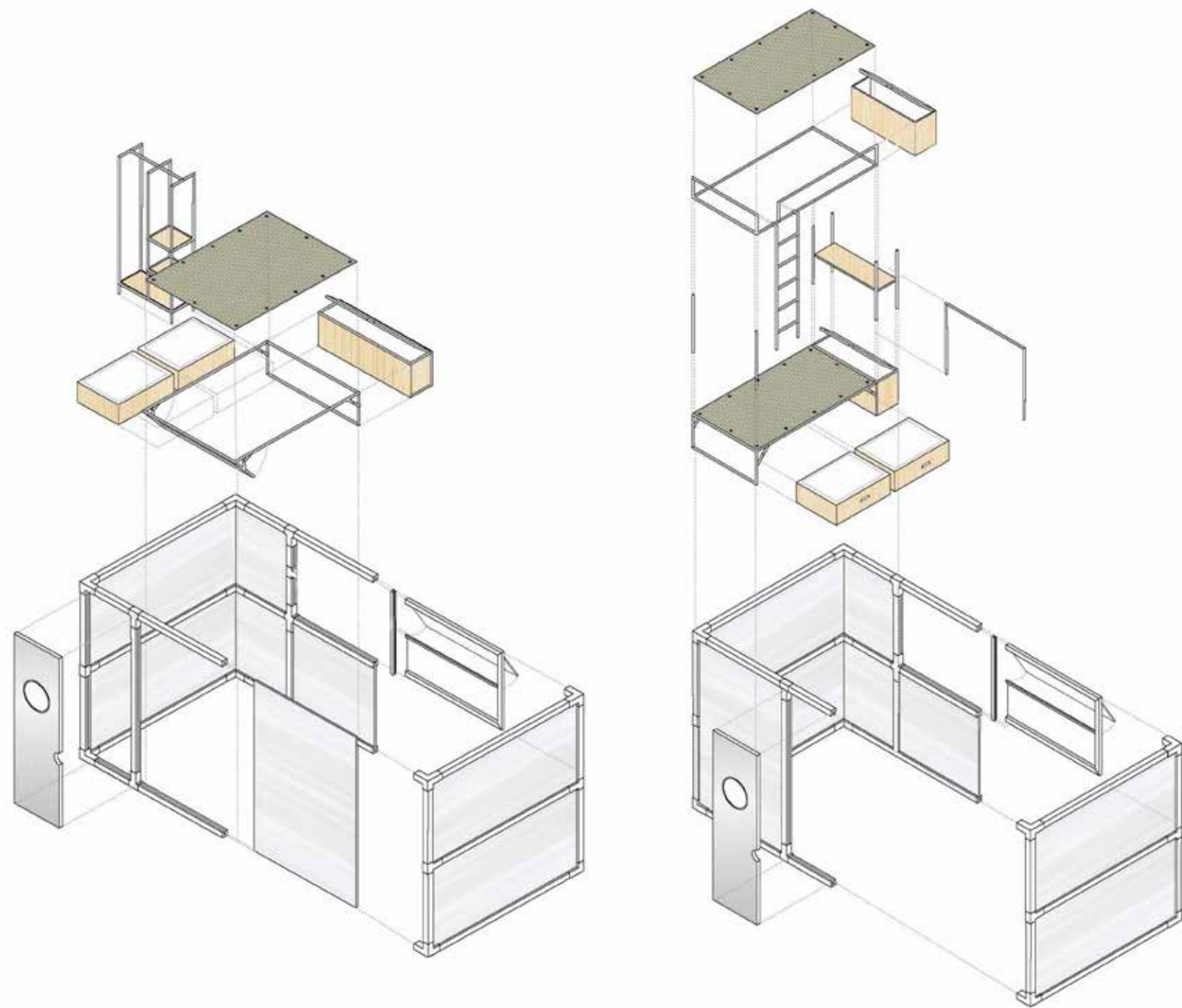
section a



front elevation

section b





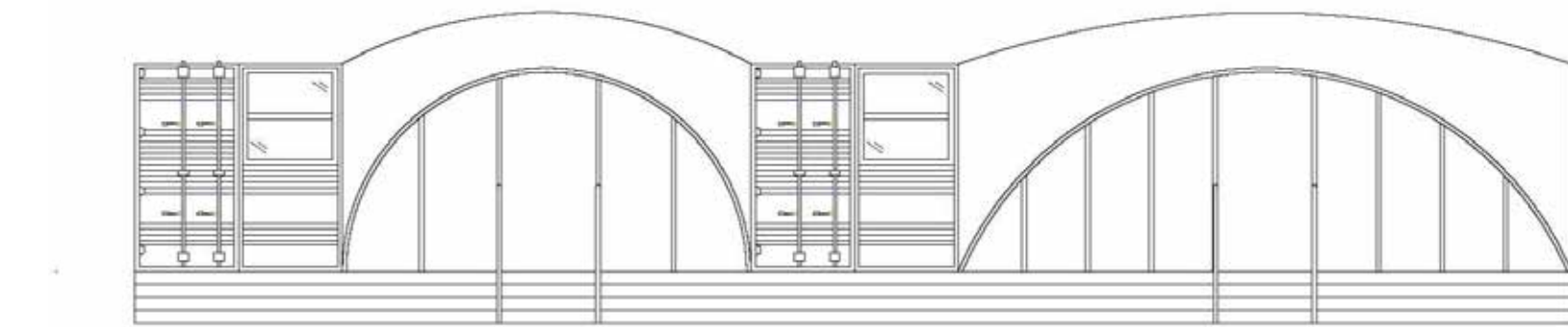
PHASE 1

Phase 1 is the temporary emergency shelter required immediately after the disaster occurs. The span within phase 1 can range from days to weeks or at least until a better solution is provided. These bedroom modules come prefabricated with an aluminum frame and plastic carbonate sheets that slide in accordingly. The corner pieces allow for further expansion so that families can stay together while also having privacy in the very public arena.



PHASE 2

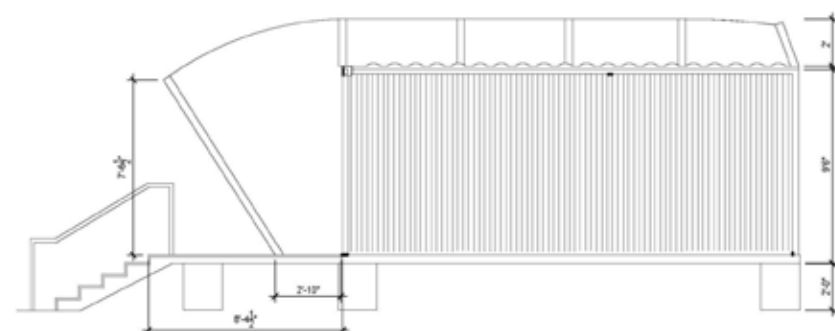
Phase 2 is temporary housing usually taking the form of a rented apartment or a prefabricated unit. The interim housing is provided until families can find a more permanent solution. The span can take months to even years but this solution does allow for a return to everyday activities such as school and work. The architectural membrane is a material commonly used for building temporary structures. The material used in my project comes from the Japanese company Hiraoka. The polyester fabric is treated with an acrylic and PVC coating to maintain durability under different weather conditions while still allowing the tensile to stretch. Haven utilizes the translucent membrane for the communal spaces to allow light to permeate in and out of the space while the opaque version will signify more private areas such as the residential units.



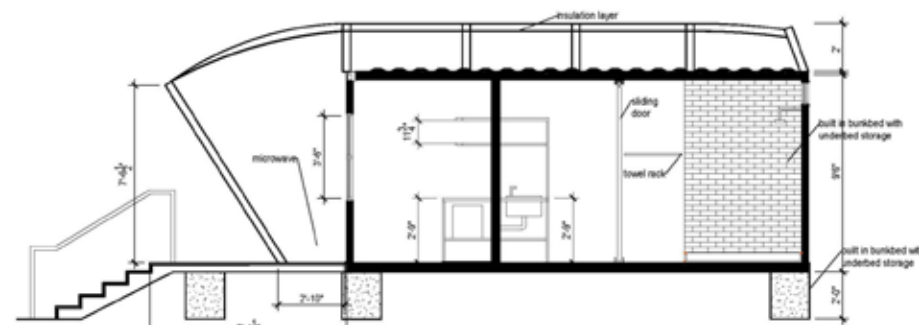
front elevation



back elevation

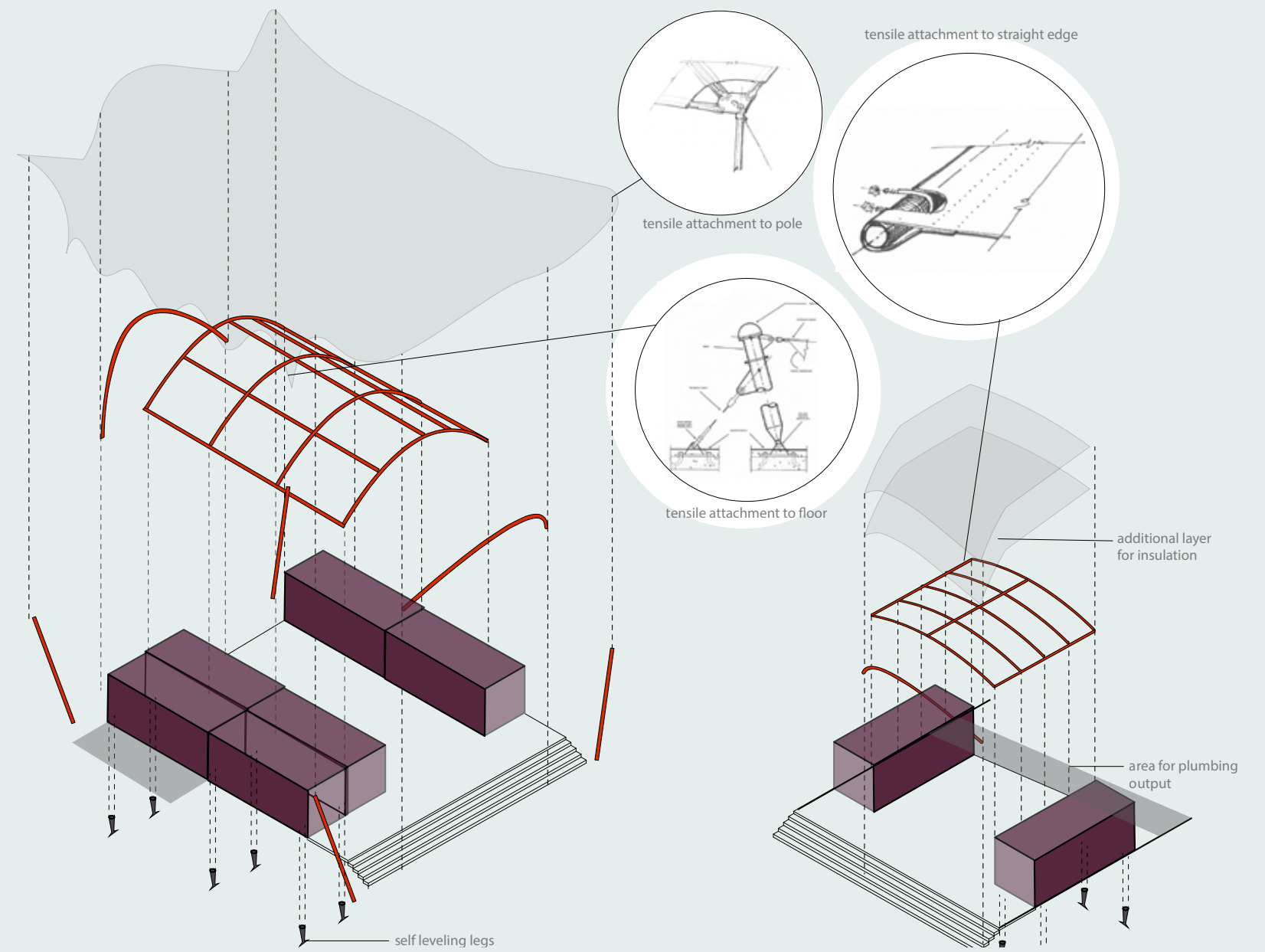


right elevation



section

STRUCTURE





outdoor patio

HAVEN 55



community center daycare



bedroom module



residential unit, kitchen

HAVEN 56

YENNA CHOI

INTERIOR DESIGN

WORK EXPERIENCE

TOBIAS DESIGN COLLABORATIVE

Intern

December 2020 - April 2021

- 3D Modeling and Rendering for Bandito Restaurant
- Developed color and material palettes for interiors
- Cultivated Brand Identities for clients

VIDEO AND MEDIA RESOURCES

Student Worker

January 2020 - March 2020

- Lent DVDs and film & photography equipment to students
- Took reservations for screening and meeting rooms and assisted set up for events
- Learnt how to work filming and photography equipment

ALLBIRDS

Retail Ambassador

July 2019 - December 2019

- Worked as a sales associate at the Soho location
- Learned about shoe design and sustainable fabric and sole alternatives
- Built relationships with customers to endure their satisfaction with their purchase and experience

CONTACT



+01(949) 922 6763



choiyenna@gmail.com



<https://yennachoi.myportfolio.com>



Brooklyn, New York
Irvine, California

EDUCATION

Pratt Institute

Interior Design BFA
2017-2021

SKILLS

- Revit
- Rhino 6
- Autocad
- Indesign
- Illustrator
- Photoshop
- Premiere Pro
- After Effects
- Adobe Acrobat
- Enscape

LANGUAGES

- English
- Korean