

portfolio
2019-2020
ayman H

OFFICE DESIGN

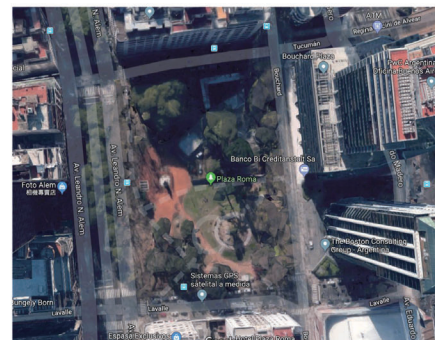
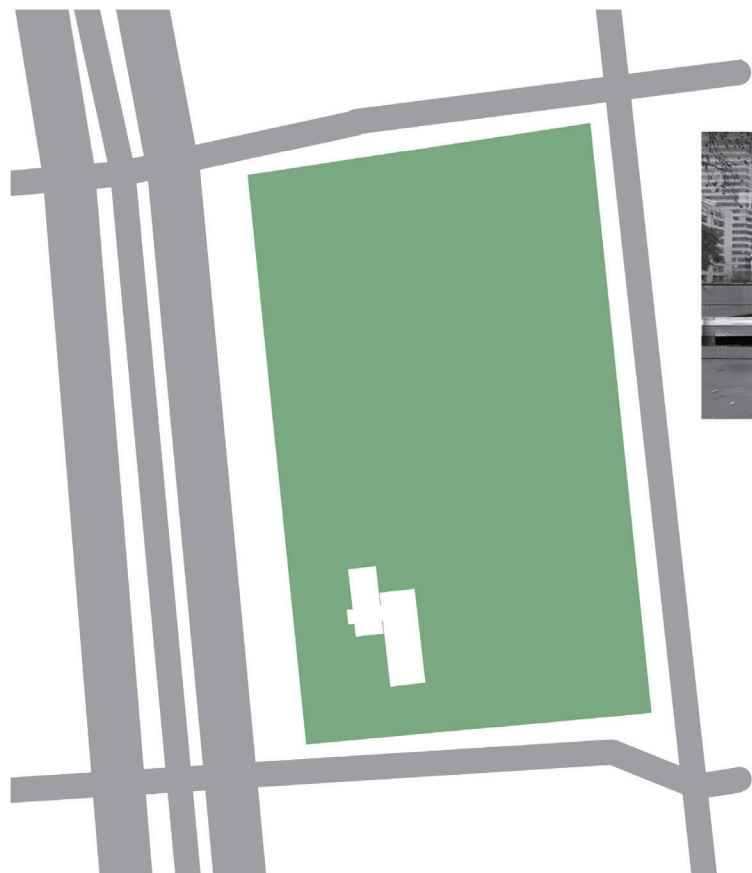
- MUSIC INDUSTRY



Concept Statement:

As the music industry developing, the music is no longer the only element. The cooperation of artists in different fields is getting more and more important, so as the music and performance creating space. Curves are used to create spaces that can easily gather artists to cooperate.

Site



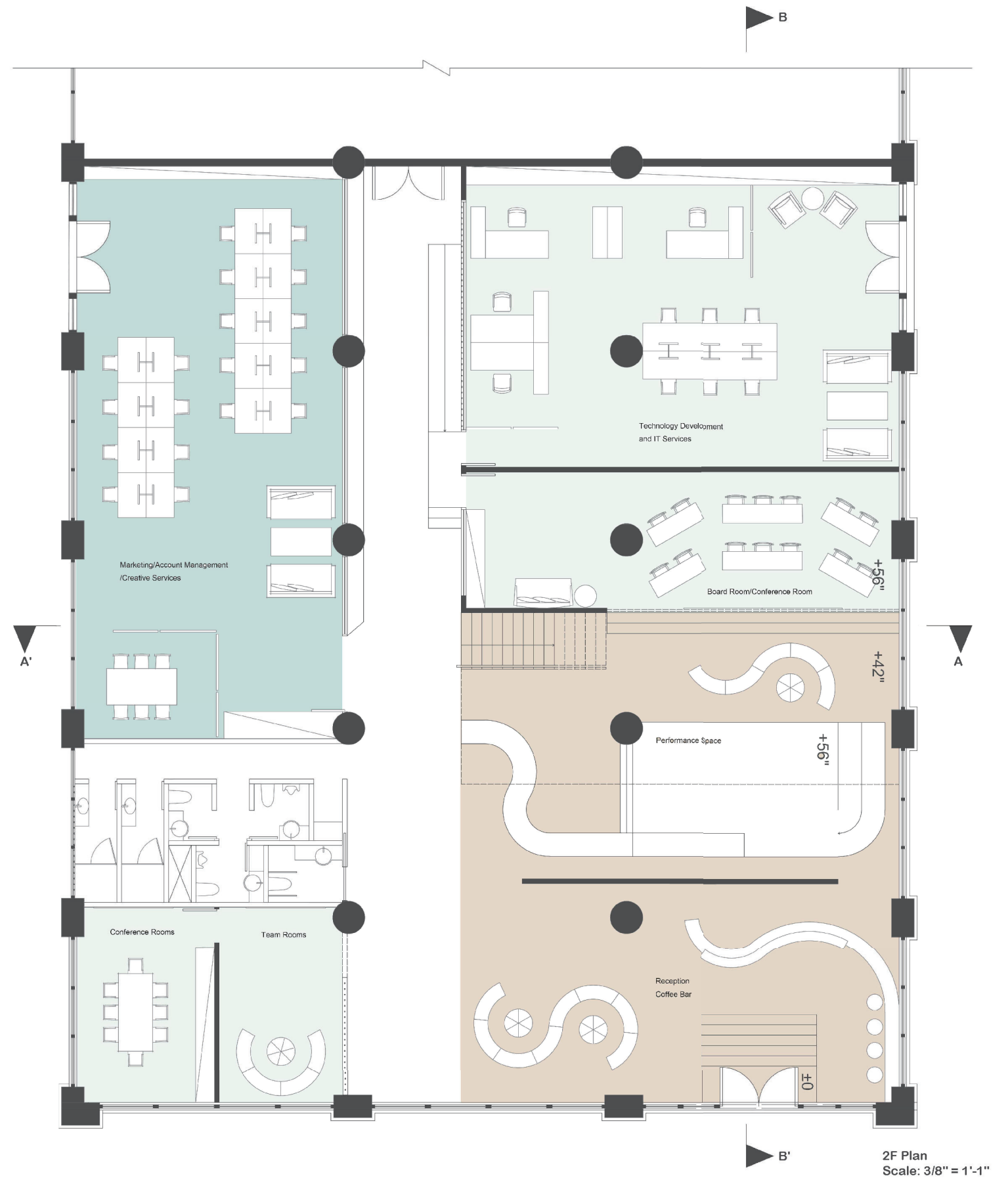
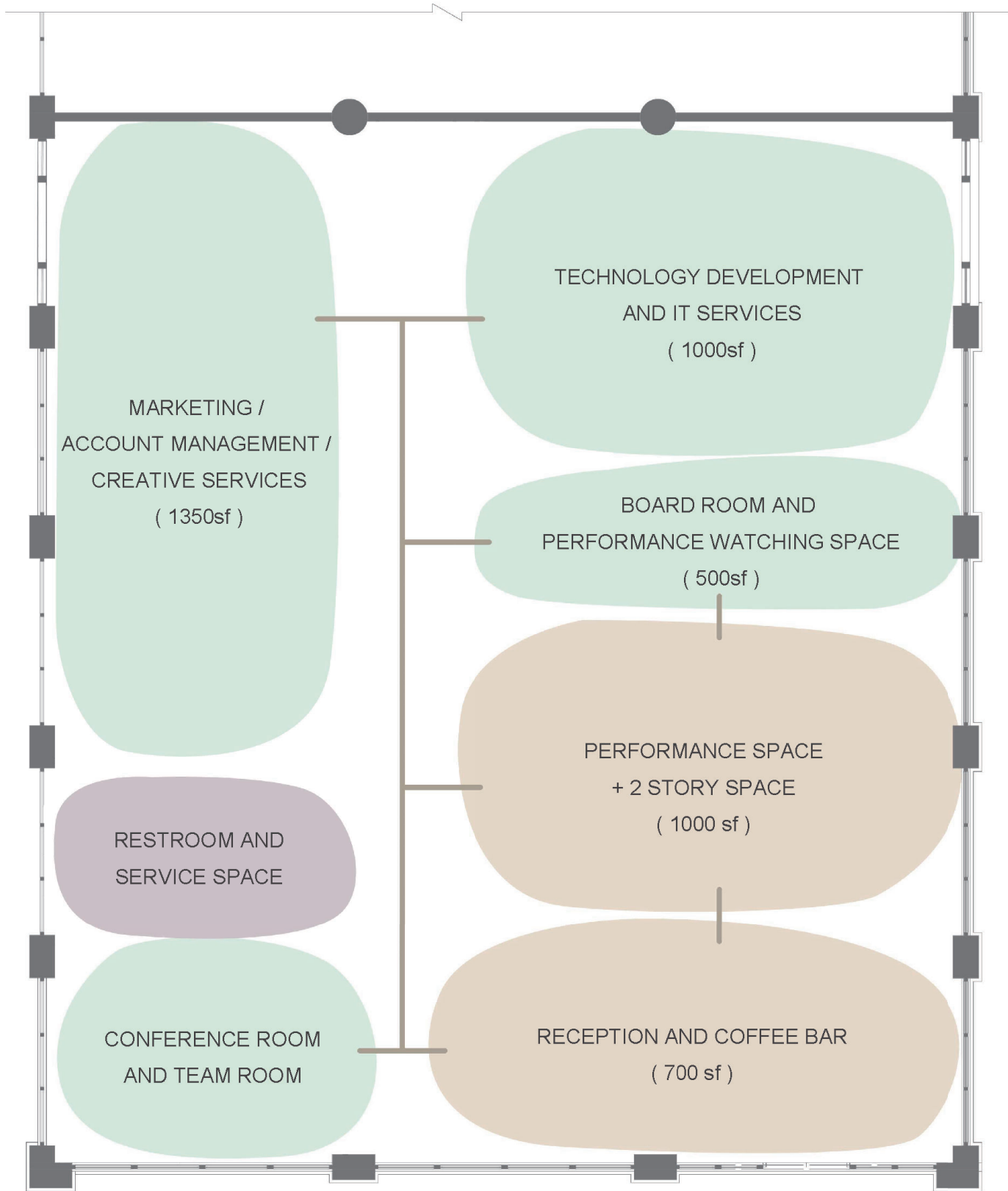
Materials

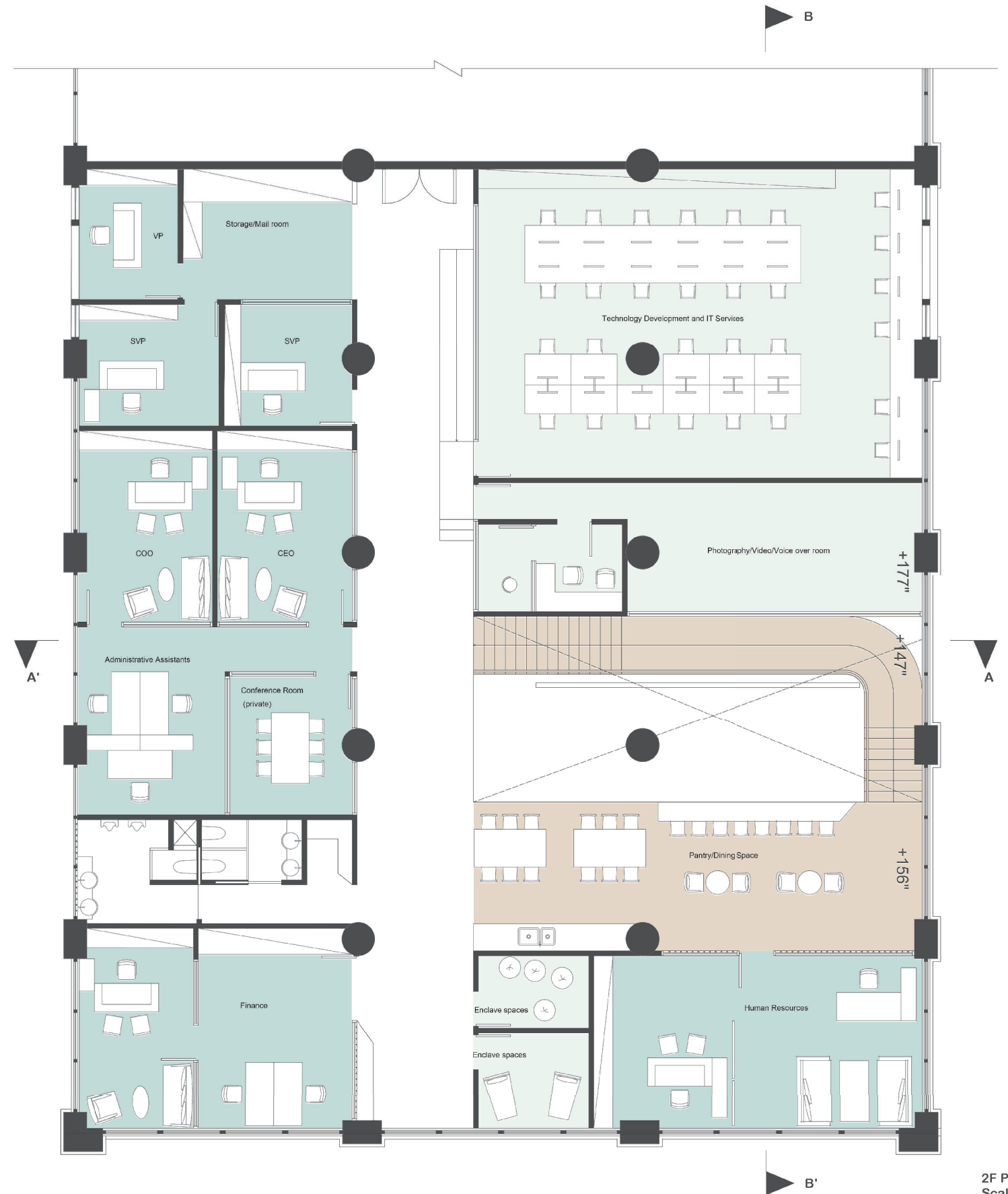
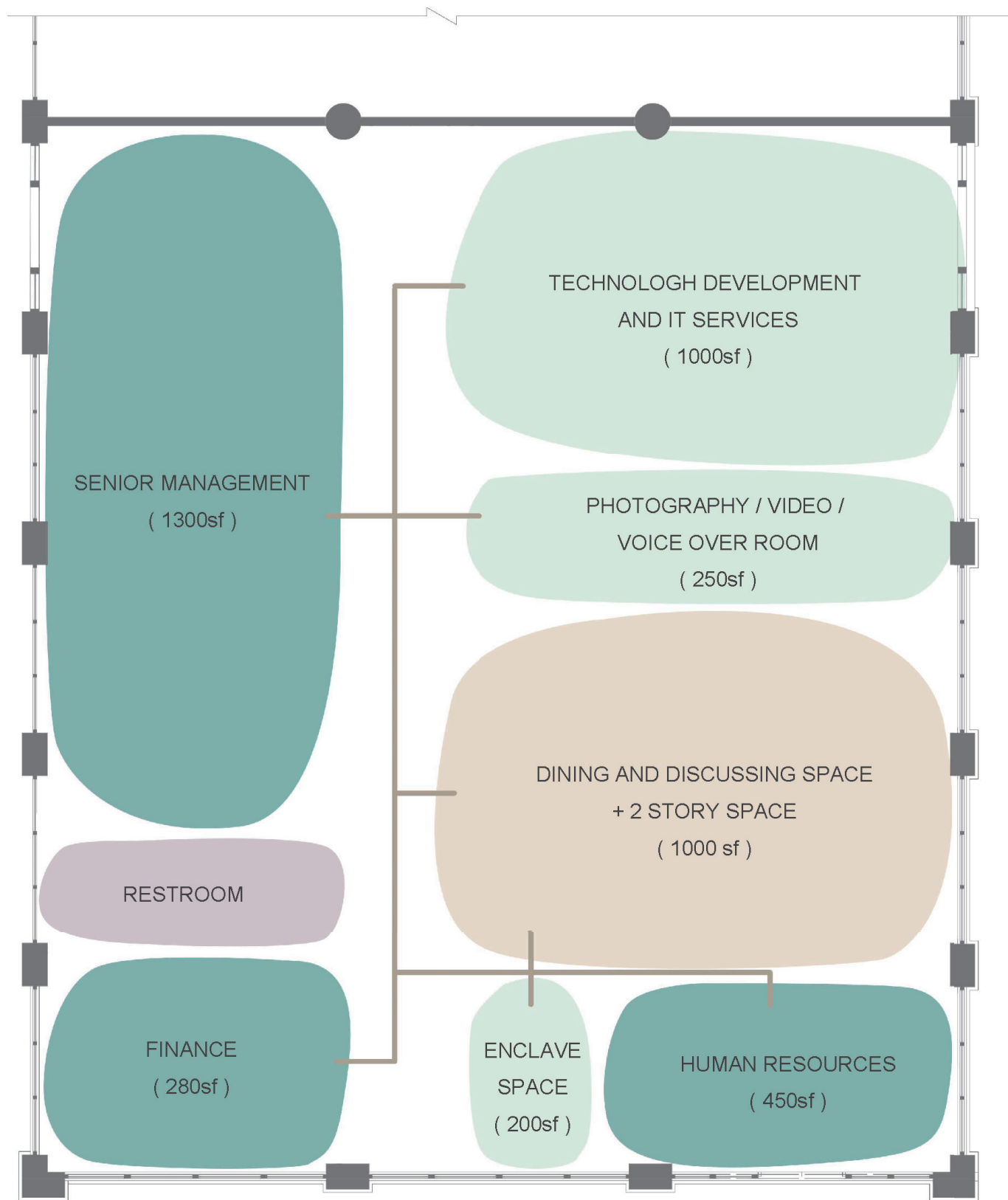


Chosen Furniture

Kinzie Screen from HBF
Standing Desk from Knoll
Desk Chair from Knoll







2F Plan
Scale: 3/8" = 1'-1"



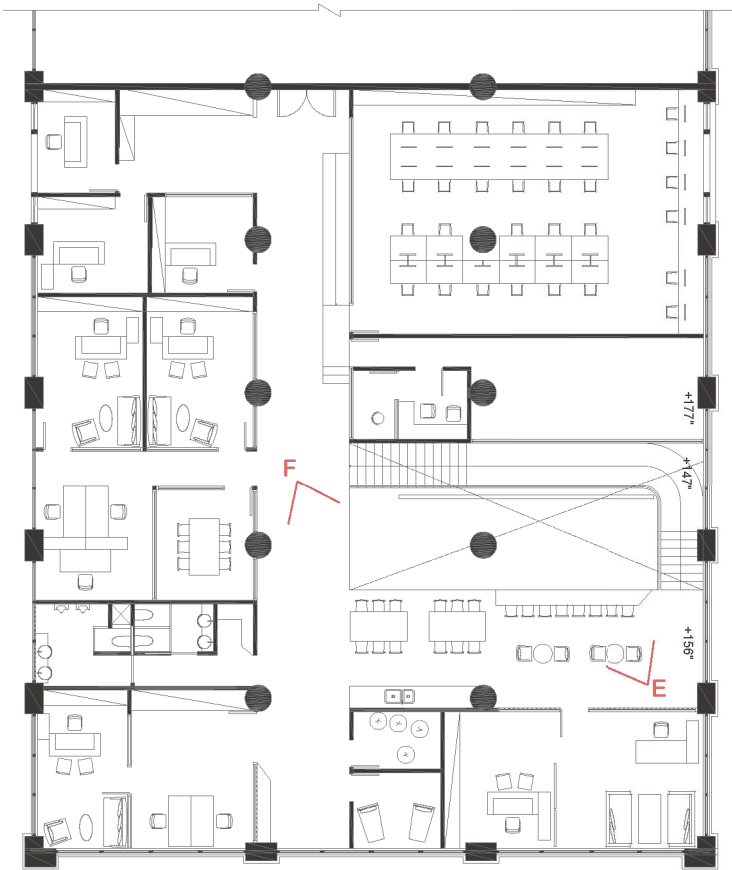
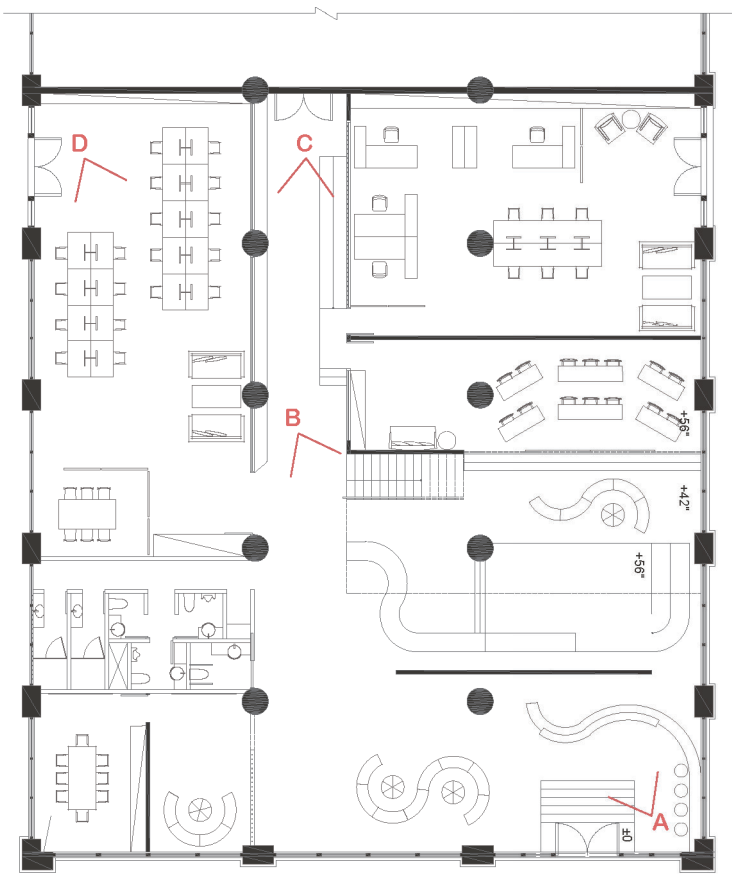
Section A-A'
Scale: 3/8" = 1'-1"

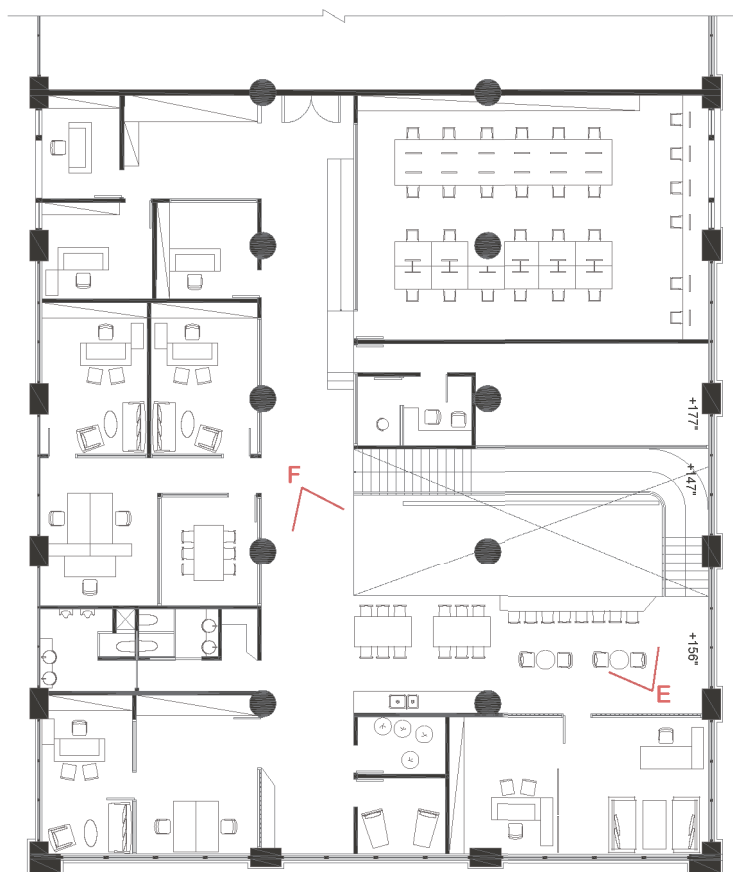
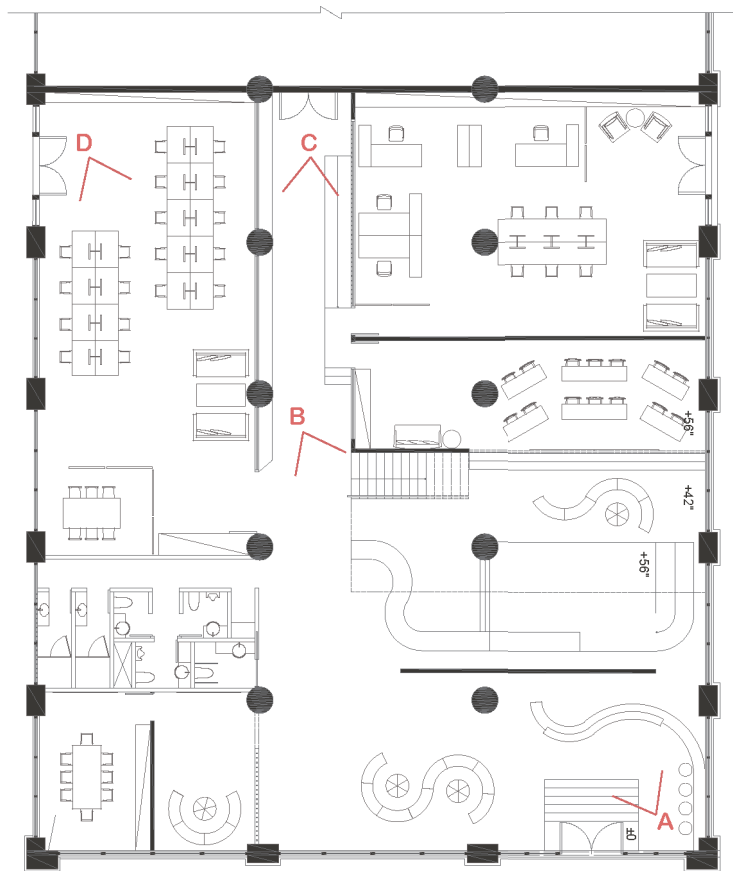


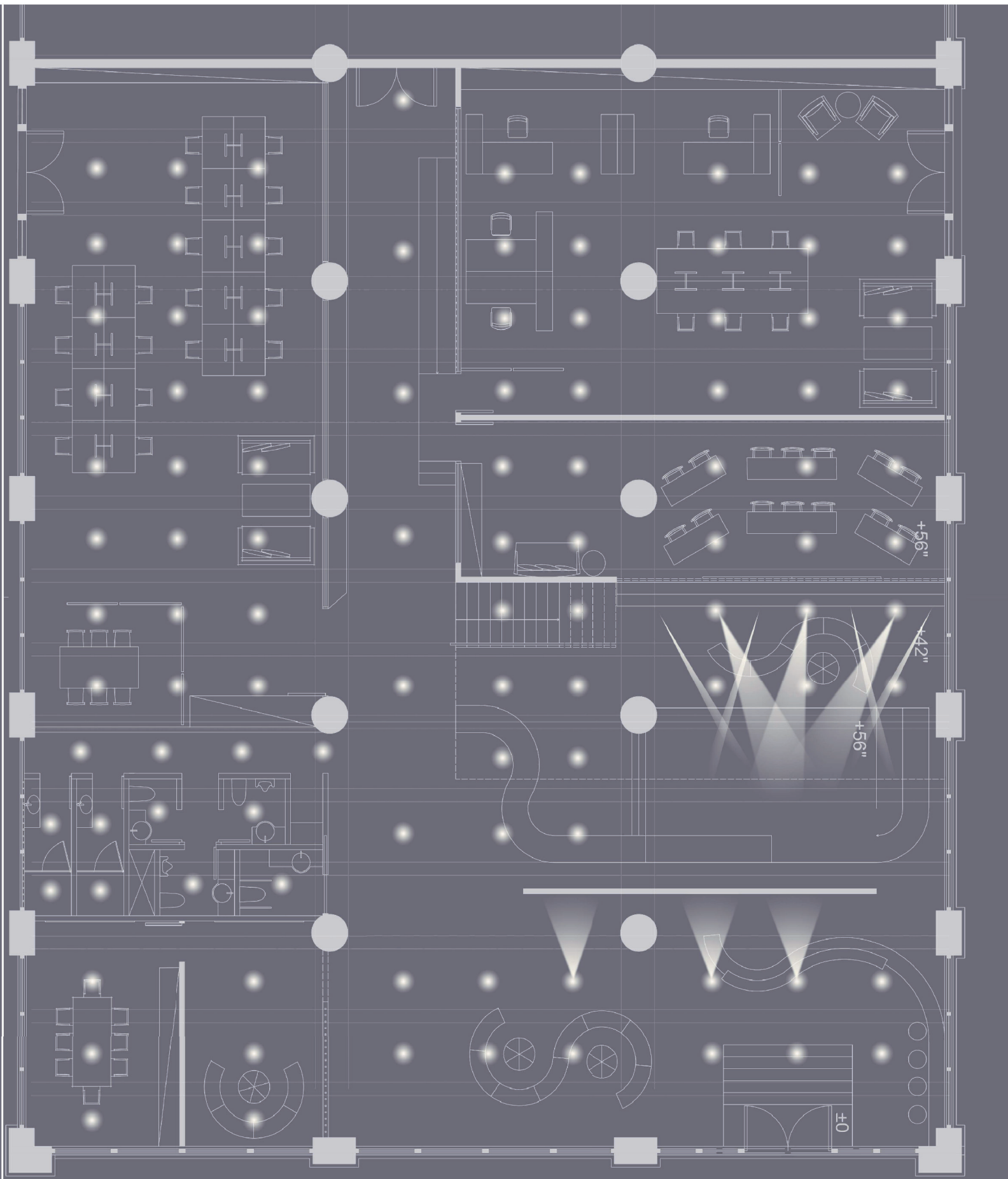
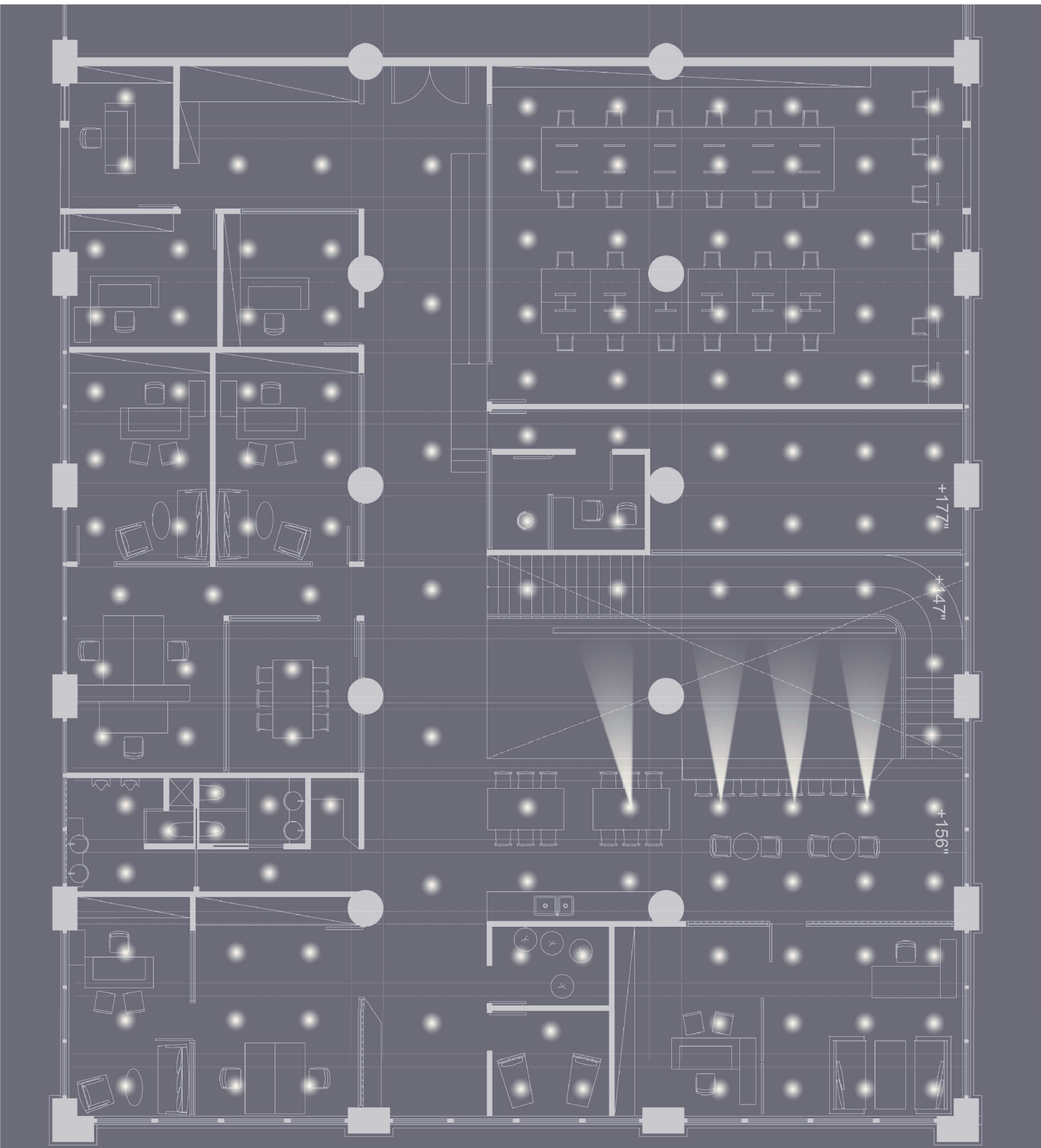
B'

Section A-A'

Scale: 3/8" = 1'-1"







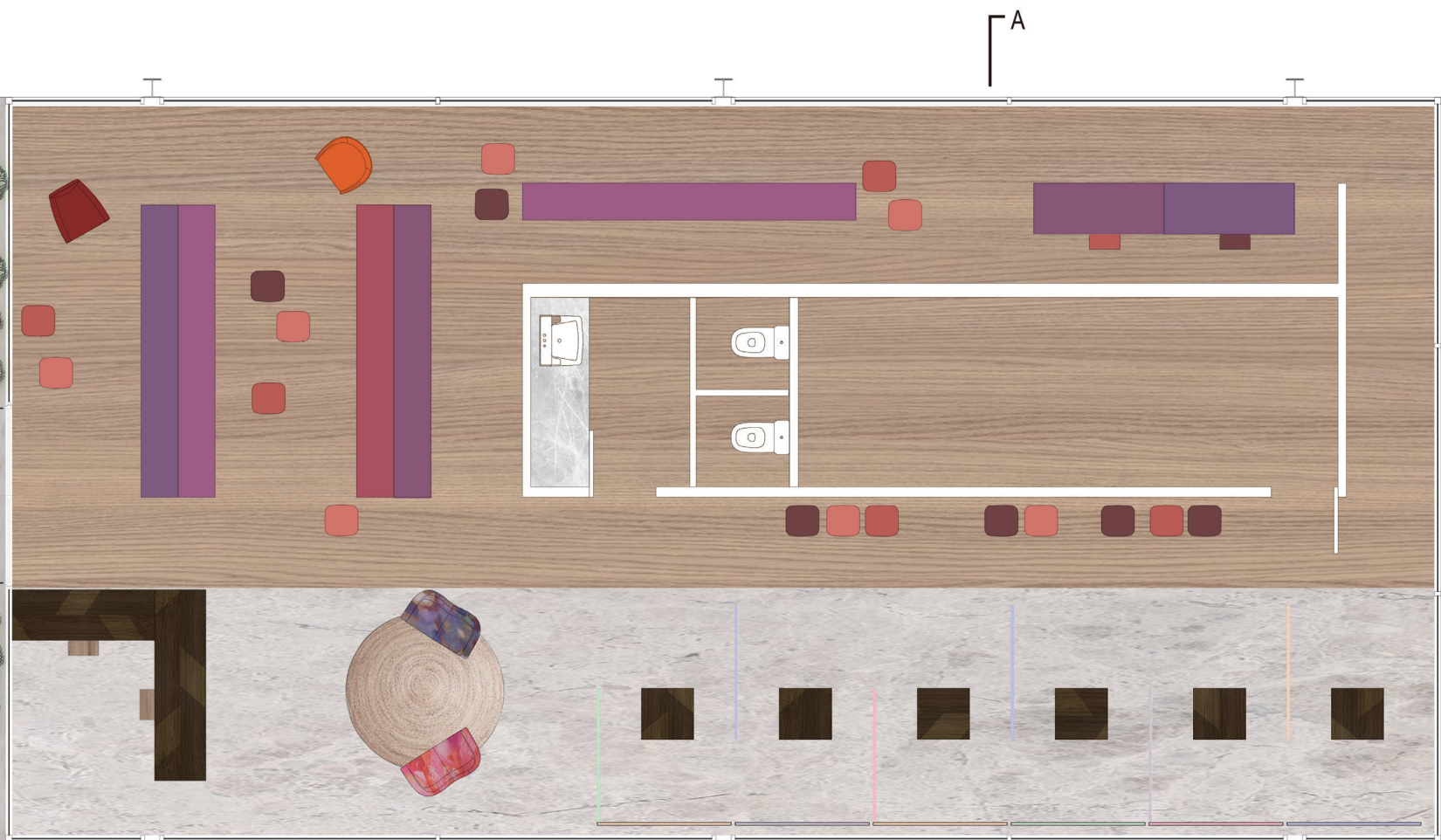
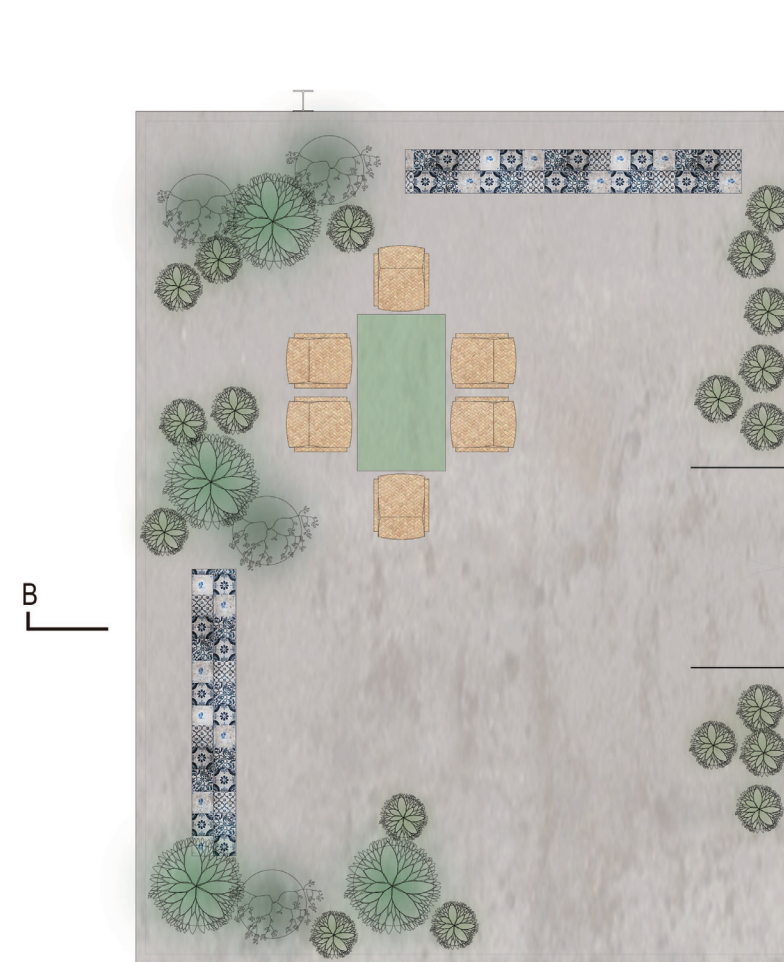
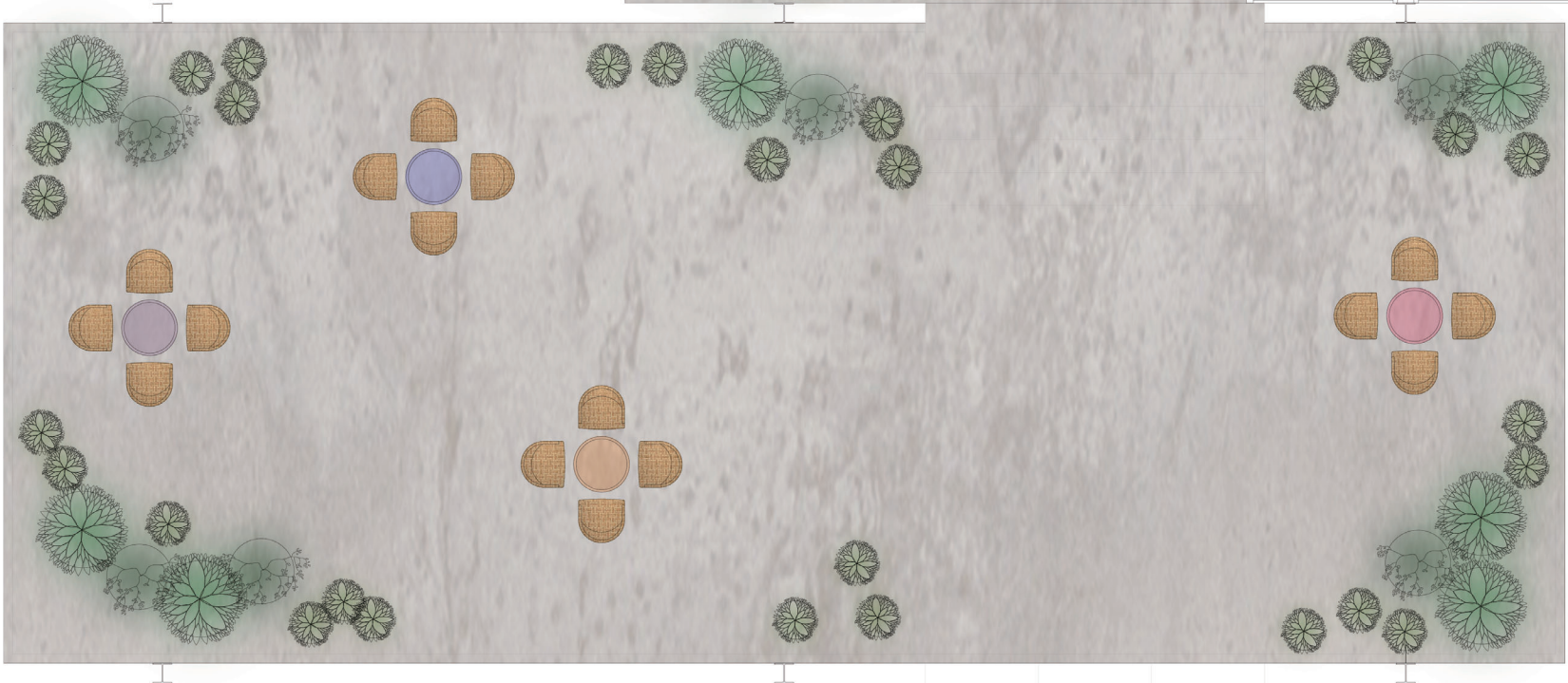
PALETTE — Library and Tourist Center in Buenos Aires, Argentina

Class: INT 715-05 FA19

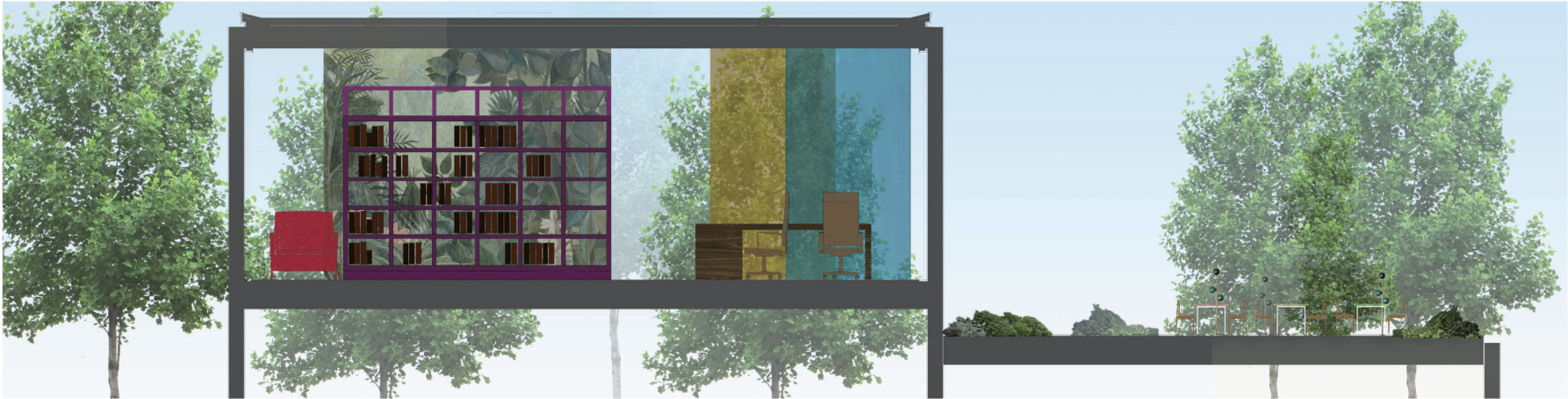
Professor: Monica Kumar / Amanda Arikol

Name: YueMin Hu / JiWon Lee





Plan
Scale: 1/4"=1'-0"



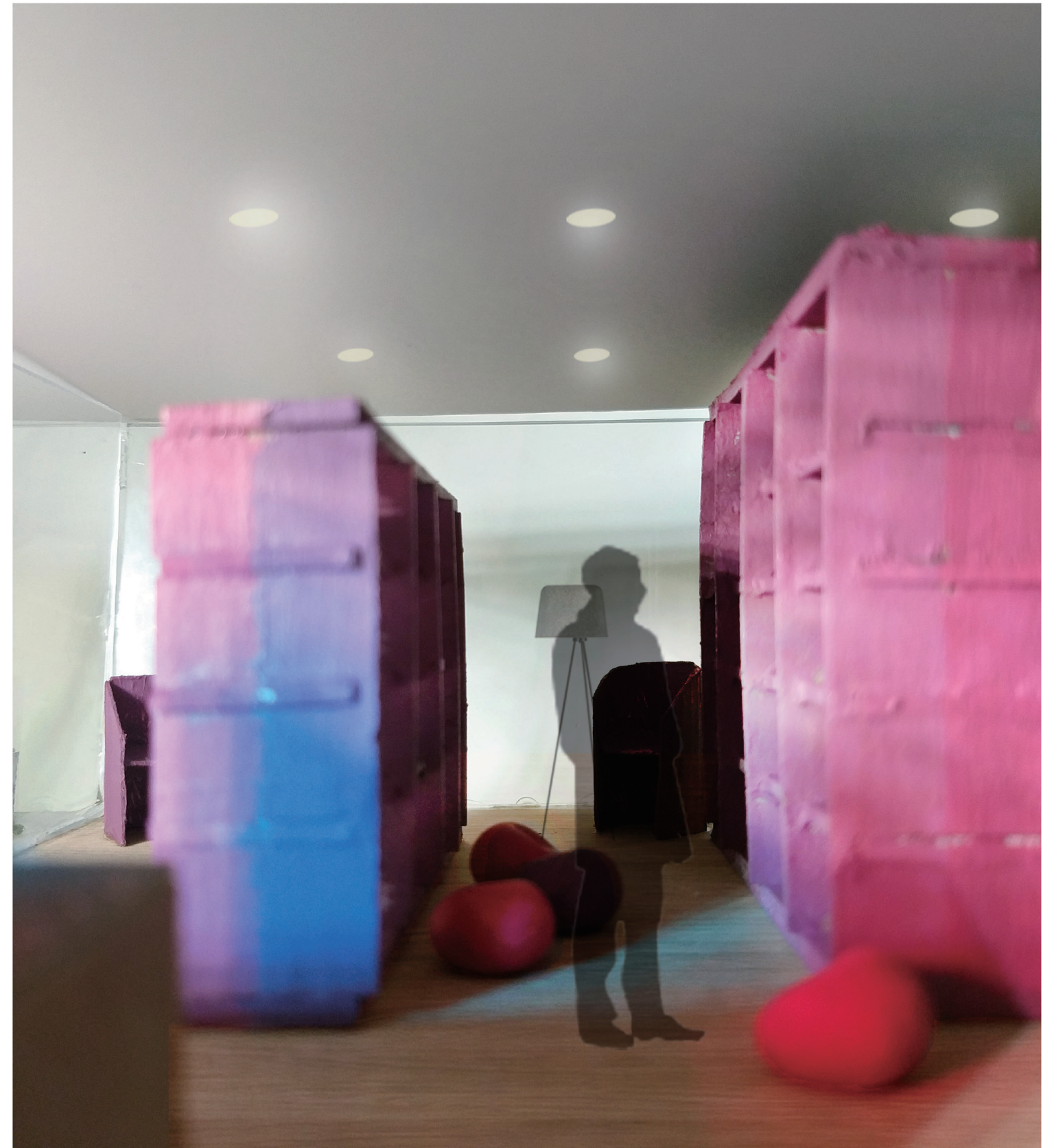
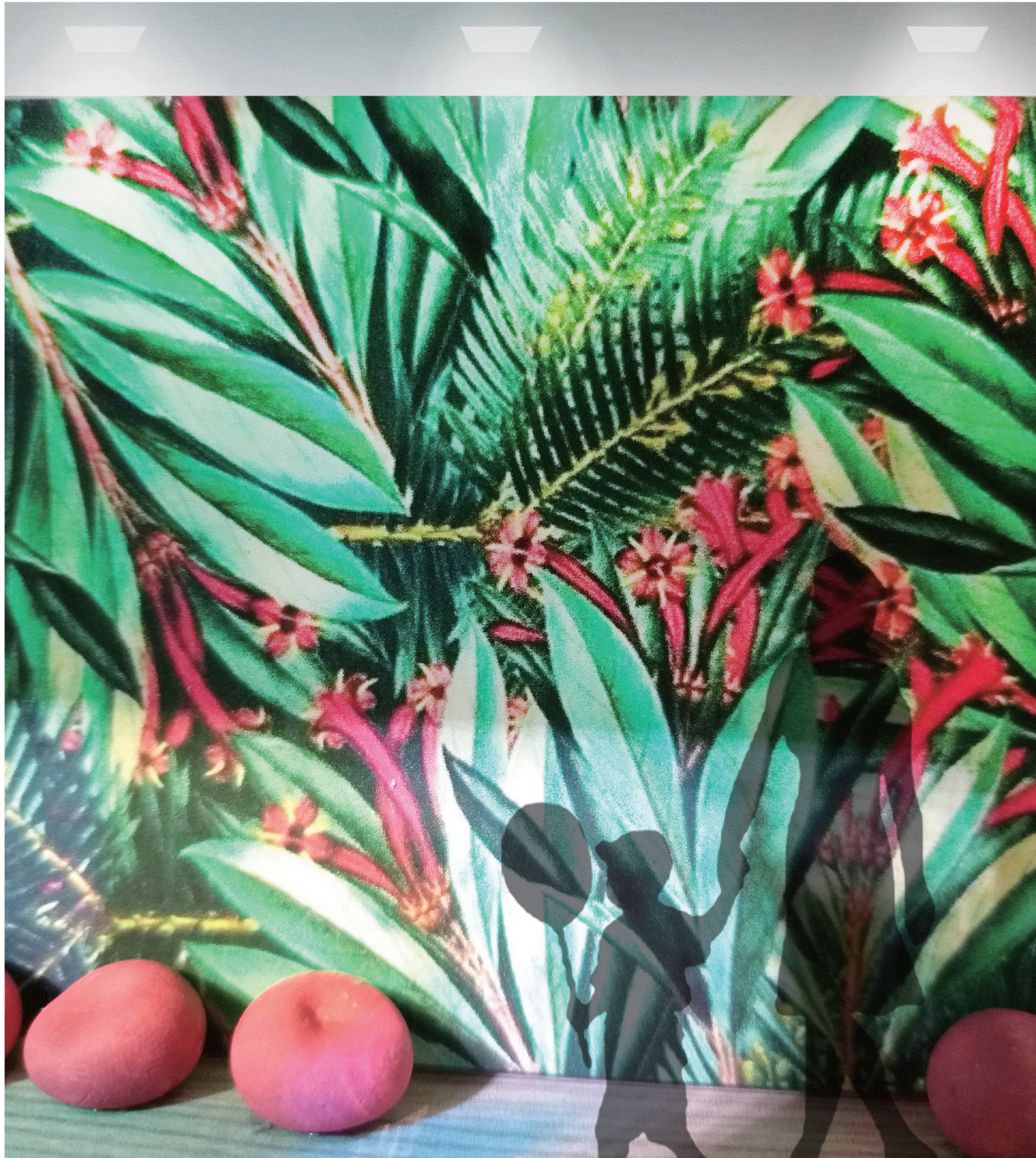
Daytime Elevation
Scale: 3/8"=1'-0"



Daytime Elevation
Scale: 3/8"=1'-0"



Perspective





Perspective

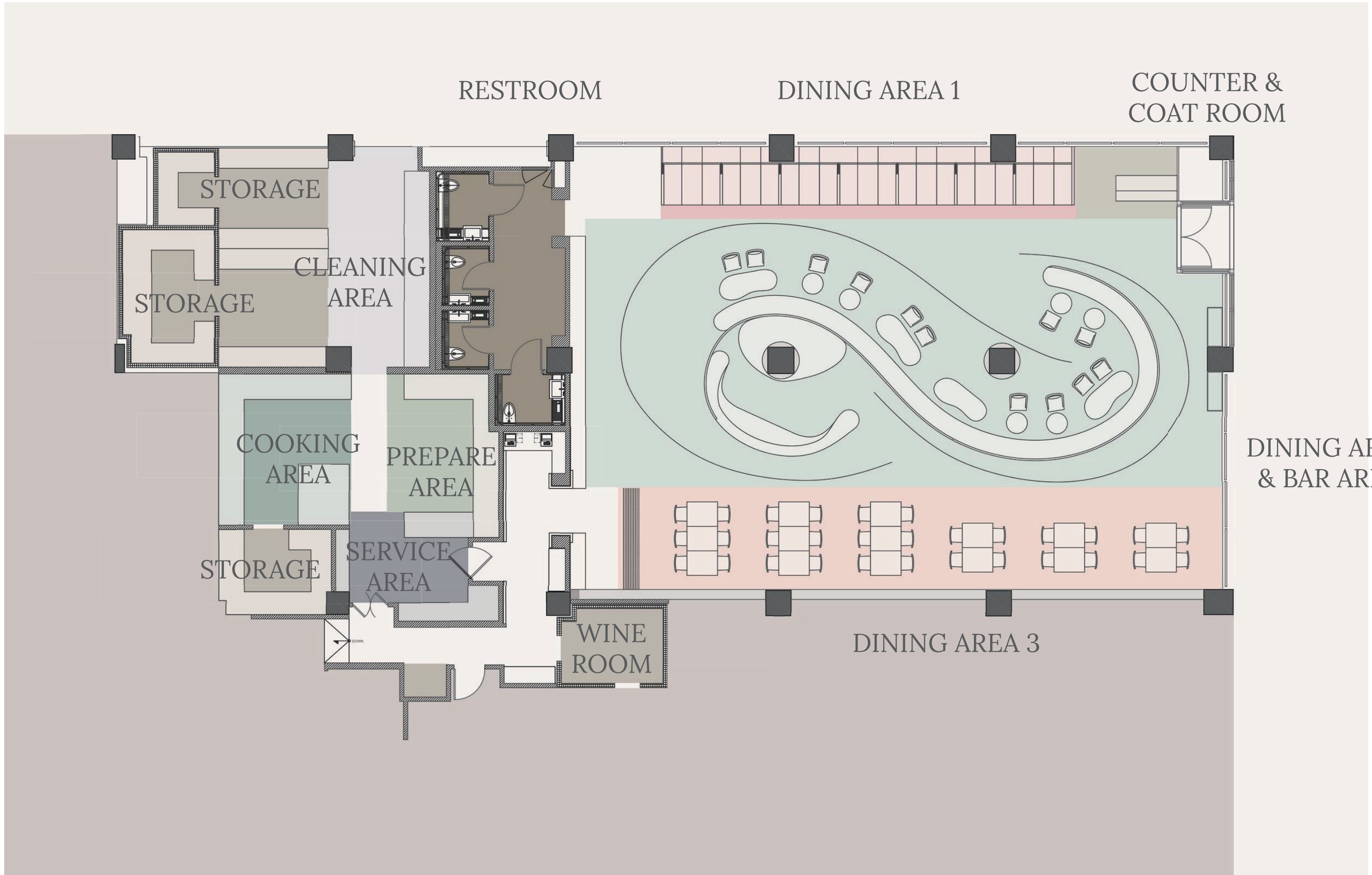
GALLERY SPACE x FOOD SPACE

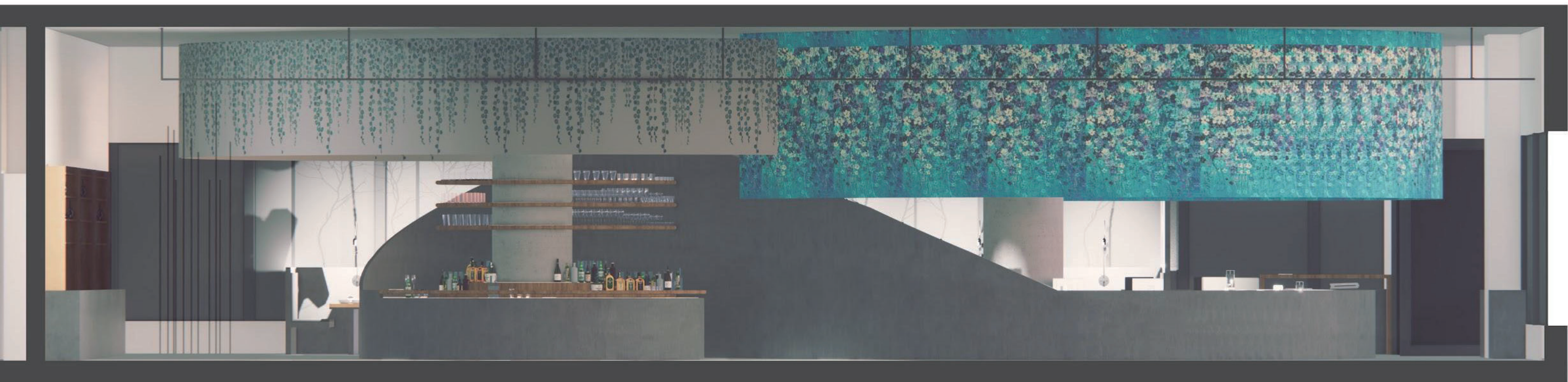
STATEMENT

THIS RESTAURANT IS A COMBINATION OF FOOD SPACE AND PROJECTION GALLERY WHICH PROVIDE ARTISTS A CONCEPTUAL SPACE TO EXHIBIT THEIR ARTWORK AND ALLOW PEOPLE TO ENJOY THE ARTS IN A DIFFERENT WAY.

DURING PANDEMIC

MOST GALLERIES ARE CLOSED DURING PANDEMIC, PEOPLE CAN ONLY SEE ARTWORKS ONLINE. THIS RESTAURANT PROVIDE DINING SPACES WITH PARTITIONS THAT ALLOW PEOPLE TO NOT ONLY EAT HERE BUT ALSO ENJOY THE PROJECTION EXHIBITION.

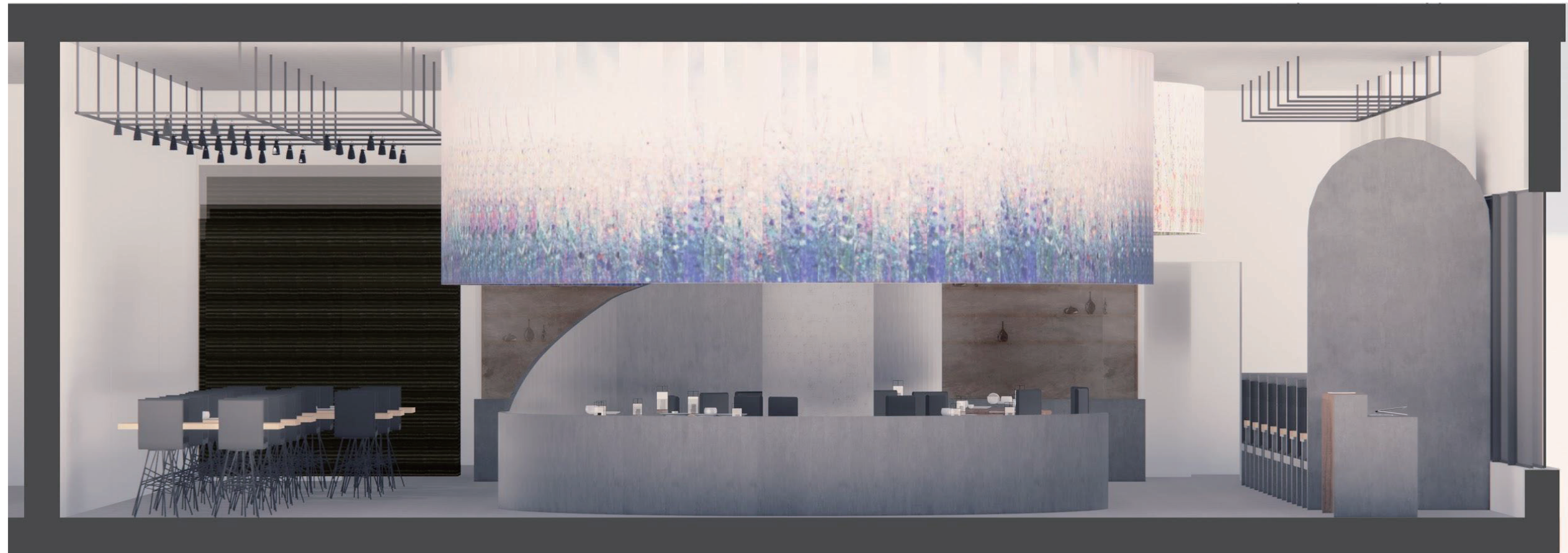




SECTION A



SECTION B



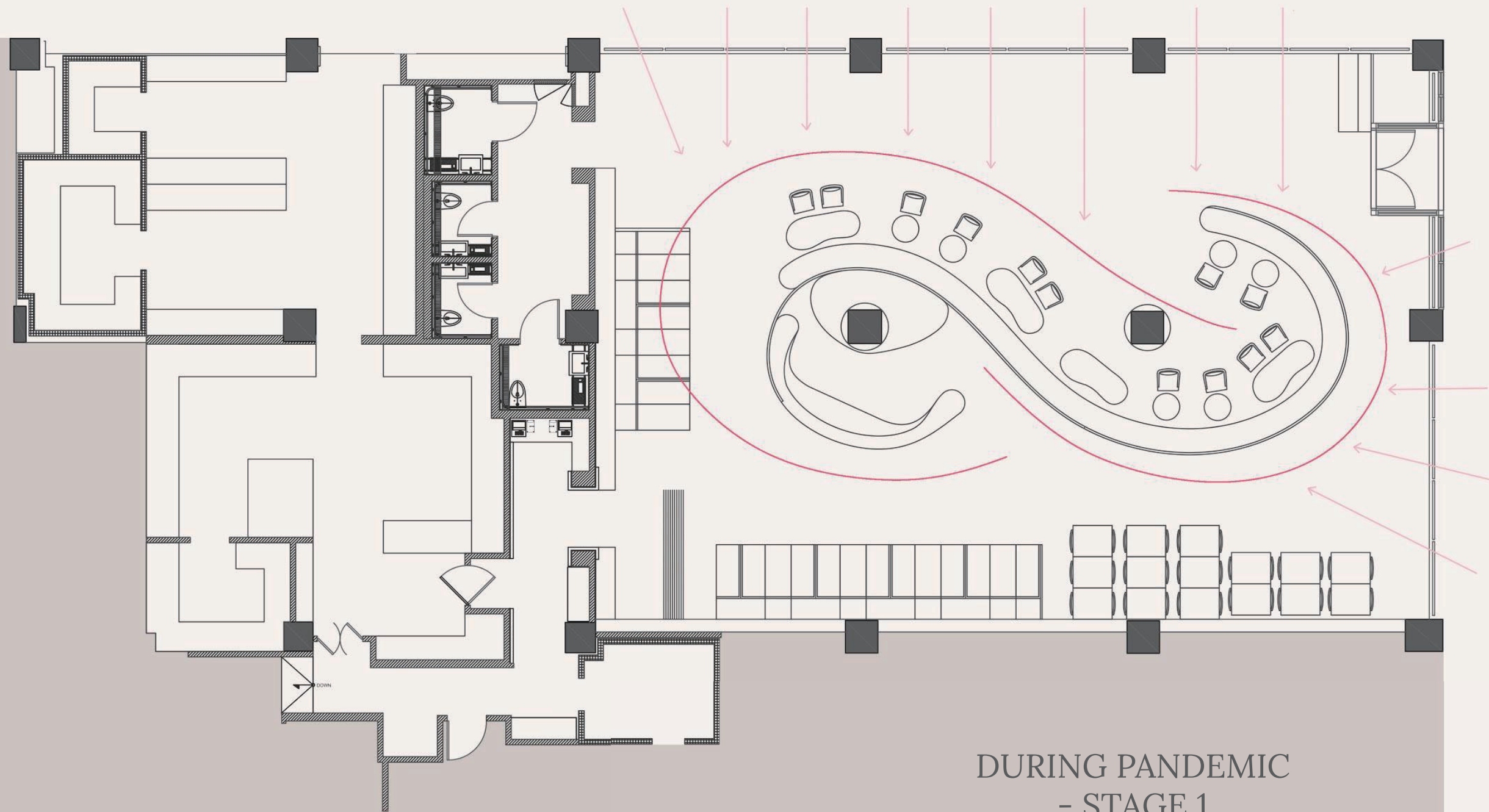
SECTION C









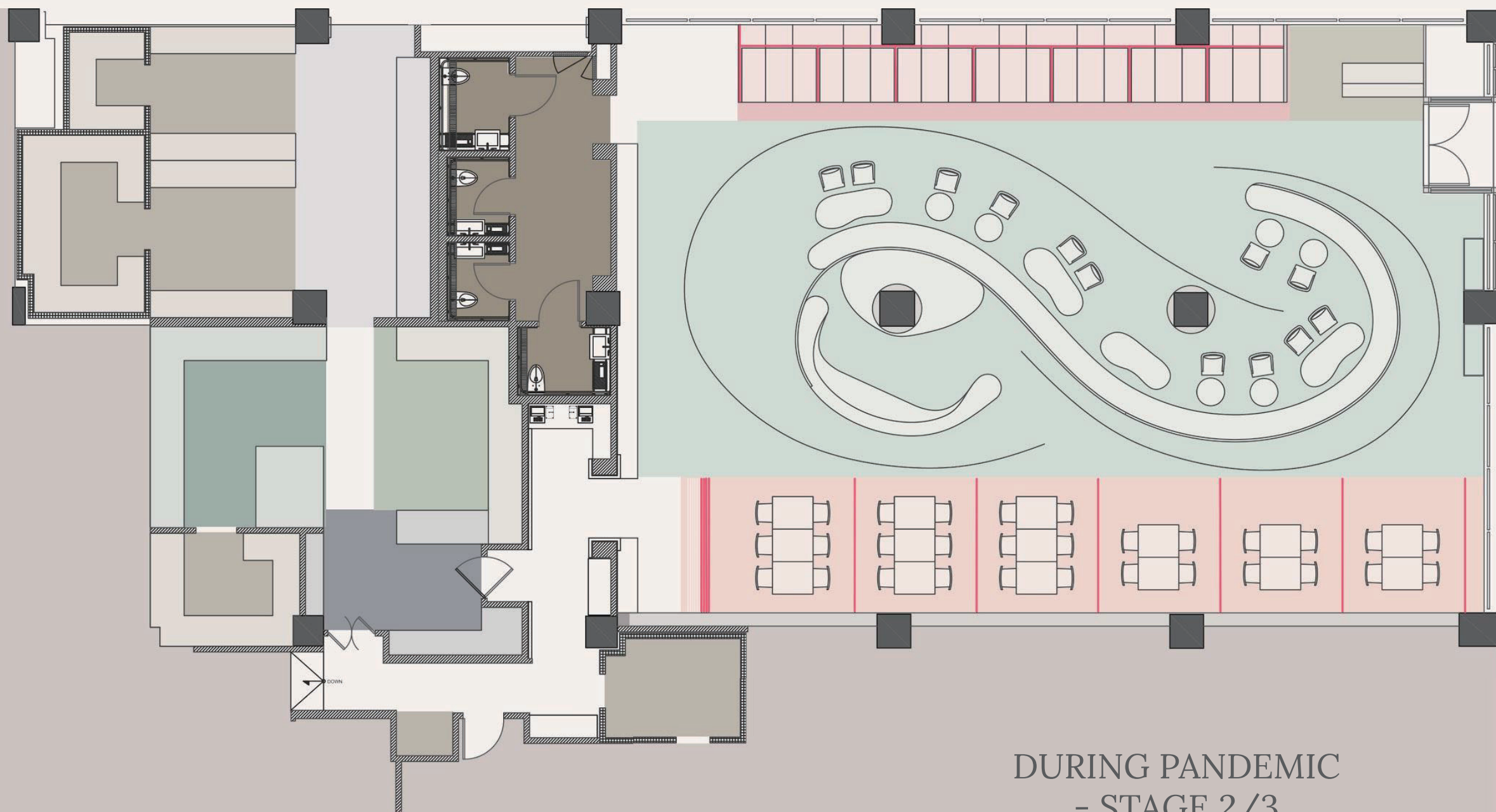


DURING PANDEMIC
- STAGE 1









DURING PANDEMIC
- STAGE 2/3



