

PORTFOLIO

BINGYU HU

2016 - 2019

CONTENTS

01. NEW VITALITY: SPIRAL GARDEN AS STRATEGY

Revitalization of traditional quadrangle dwellings in hutong, Beijing, China, 2016

01

02. COMMUNITY OF DIVERSITY: FROM CELL TO DISTRICT

Shared spaces as connection between labor and domesticity, Glasgow, UK, 2018

09

03. FLOATING CLOUDS & FLOWING SPACES

Interpretation of Chinese painting in modern villa design, Beijing, China, 2015

17

04. ARTISTIC LIFE: COMBINATION OF STUDIO AND EXHIBITION

Innovation of art site in urban village, Beijing, China, 2017

25

05. FUTRUE LIVING: BEYOND SKYSCRAPER

exploration of extended living space in 2030, China, 2018

33

OTHER WORKS

HORSE: DECOMPOSITION AND RECOMBINATION

new manifestation of engraving painting, Beijing, China, 2017

37

A BITE OF JIANCHUAN

observation and expression of minority dining culture, Yunnan, China, 2017

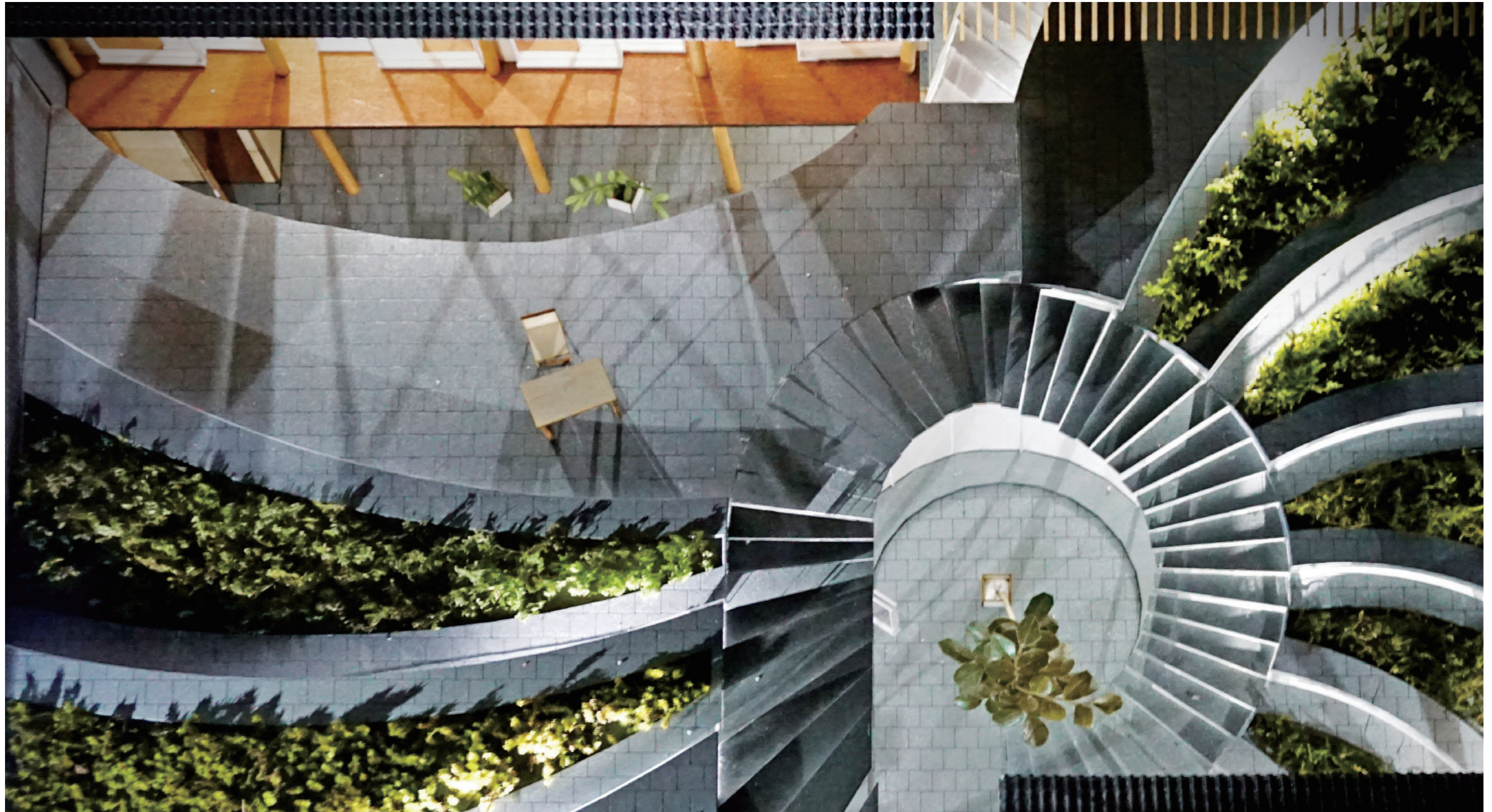
41

Chatting with people and observing people are ways in which I get inspiration.

Sometimes a good concept is difficult to form through thinking, but a good idea could pop in within a casual talk. That's why I think communication is always important. It helps people get a new angle of perspective when minds come together and collide with each other.

I can't talk directly to you, but all the things I want to present are in this portfolio. Through several projects I want to narrate my understanding of space, architecture and life. Although it's not the whole story about my learning and creating experiences, it gives a summary of those years' exploring.

Now let's start the communication. Hope you'll enjoy it.



01. NEW VITALITY: SPIRAL GARDEN AS STRATEGY

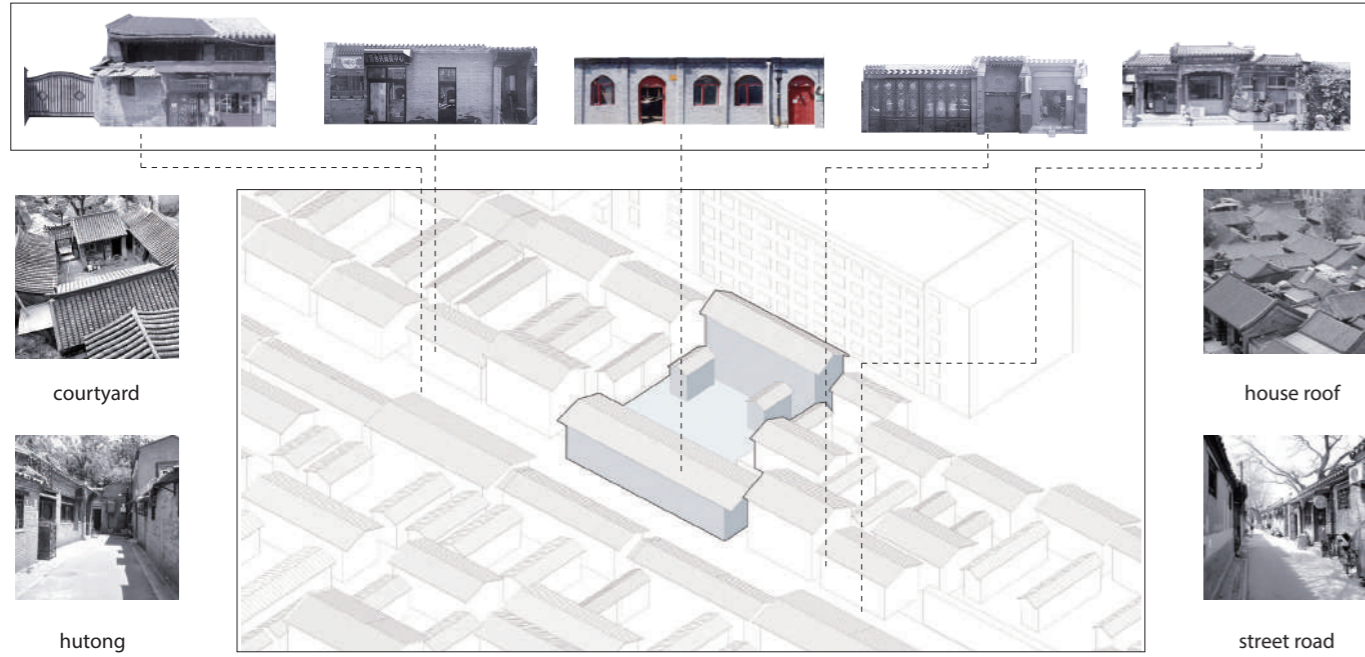
Revitalization of traditional quadrangle dwellings in hutong

'Down by the salley gardens my love and I did meet, she passed the salley gardens with little snow-white feet' -- W. B. Yeats

This project focuses on the renovation of the old Beijing quadrangle houses, as a part of the urban redevelopment plan in Dashilar. One of the concerns of this project is to breath new life into traditional courtyard, this is accomplished by a creation of spiral roof garden, which gives more functional indoor spaces and meanwhile, researve initial purpose of courtyard - close to nature. The main character of this dwelling is a hutong inn, as a new commercial activities brought in traditional district. Public spaces offer new function, as well as the new form of space, colliding with traditional building type and living style.

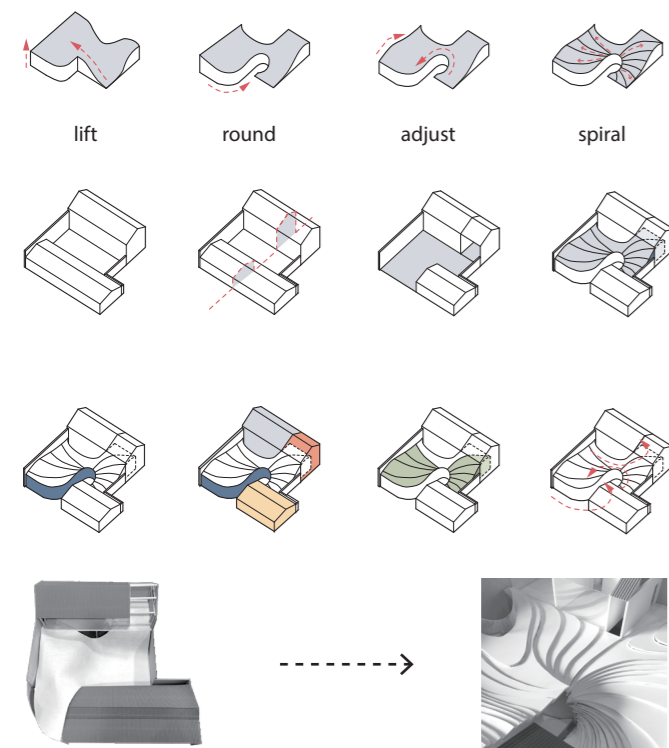
Location: DASHILAR, BEIJING, CHINA
Instructor: Han Wenqiang, Yang Yu
Individual work
9-12/2016
in CAFA

tradition

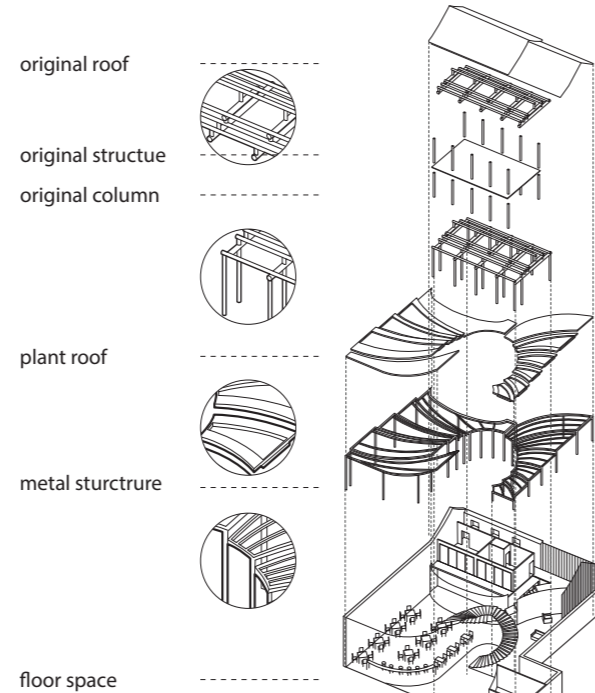


Dashilar Area, the commercial center in Ming and Qing dynasties, represents the essence and root of local culture. Nowadays, however, huge population density and the improper use of traditional dwellings make this place crowded and disordered. The limited dwelling areas and narrow streets couldn't satisfy modern life. Therefore, it becomes necessary to inject fresh blood into this district under the original building context.

strategy

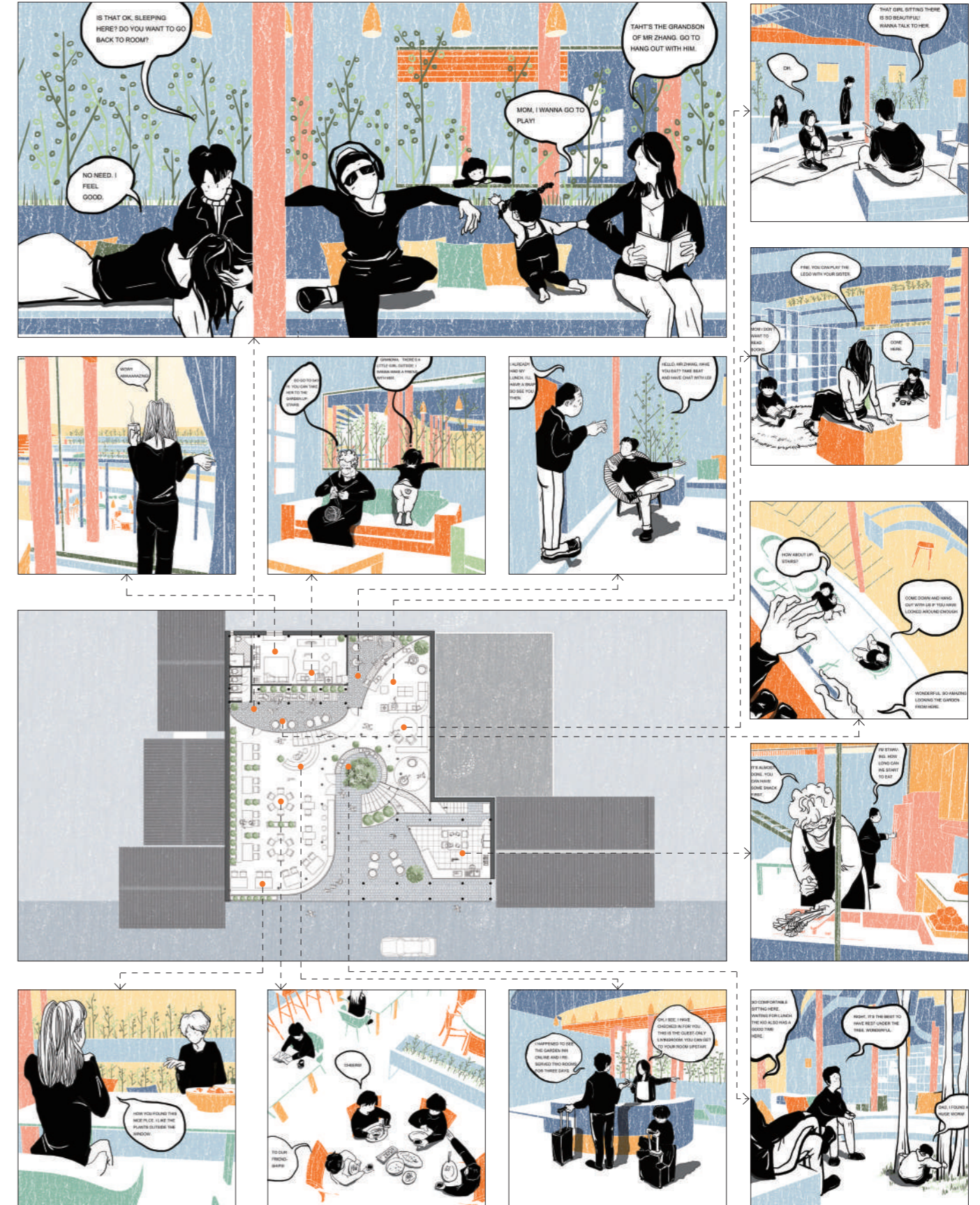


structure



The contrast between fresh and old is accomplished vividly by introducing new structure while reserving part of traditional structure. Meanwhile, spiral stairs and easement curves keep those into an integral harmony.

story: come to the inn



New space offers the original dwelling a diverse environment as an inn. Numerous stories and encounters happened there. Only becoming a background or carrier of people's activity could a space makes sense.

panorama

Reaching to the unity of function and form, the quadrangle dwelling starts a new business mode - hutong inn after renovation. The exist of courtyard is for creating public outdoor space where residents could gather and communicate. The new form of the renovation echoes this purpose. By applying a roof garden, the limitation of the four seperated and individual houses has been broken. Meanwhile, interior public spaces has be enlarged. Furthermore, ascending the courtyard expands outdoor spaces in a vertical dimension. Spiral stais bring enjoyment and freshness into a traditional order. Based on that, plants on the roof and street facade bring about ecology and green, revitalizing the building at another level. Juxtaposition of new and old, liberation of space, diversity of function, utilization of ecology, all the chapters which change the traditional dwelling into an idealistic integrity compose a lively panorama.





promenade



Following the entrance, one could ascend the stairs surrounded by plants on the roof garden, or get into the flowing interior space. All the amusements and special experiences are hiding in the promenade within the renovated space.



encounter



Spaces possessing different functions become opposite sceneries with each other, therefore, spontaneously making coincident encounters. With sight communication, from space to space, the renovated quadrangle is filled of surprise.



01. Overlapping: Experiment of Future Educational Space

Experiment of Future Educational Space

'Down by the salley gardens my love and I did meet, she passed the salley gardens with little snow-white feet' -- W. B. Yeats

This project focuses on the renovation of the old Beijing quadrangle houses, as a part of the urban redevelopment plan in Dashilar. One of the concerns of this project is to breath new life into traditional courtyard, this is accomplished by a creation of spiral roof garden, which gives more functional indoor spaces and meanwhile, researve initial purpose of courtyard - close to nature. The main character of this dwelling is a hutong inn, as a new commercial activities brought in traditional district. Public spaces offer new function, as well as the new form of space, colliding with traditional building type and living style.

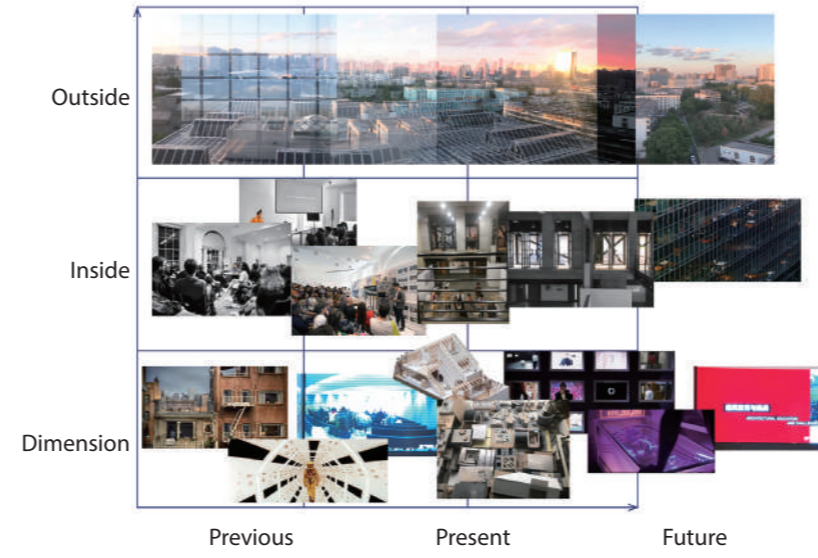
Location: HUAJIADI, BEIJING, CHINA
 Instructor: Fu Yi, Han Wenqiang, Han Tao
 Individual work
 02-05/2019
 in CAFA

Concept



Windows and Screen

Sequence



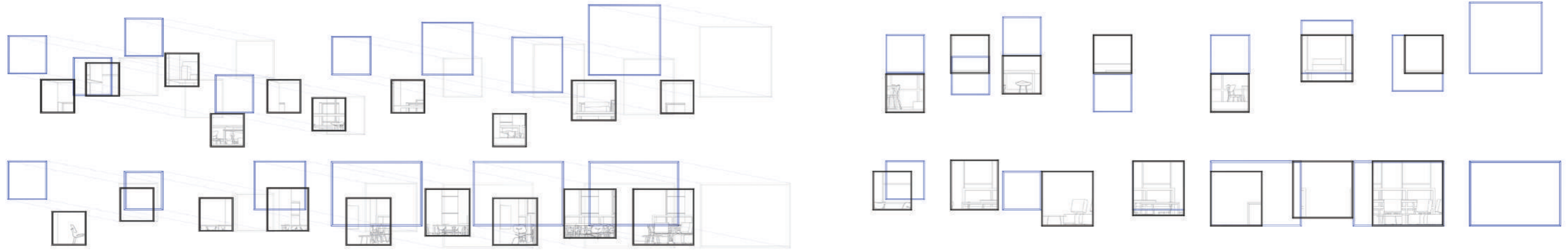
Previous Present Future

Interweaving



From: Paul Klee

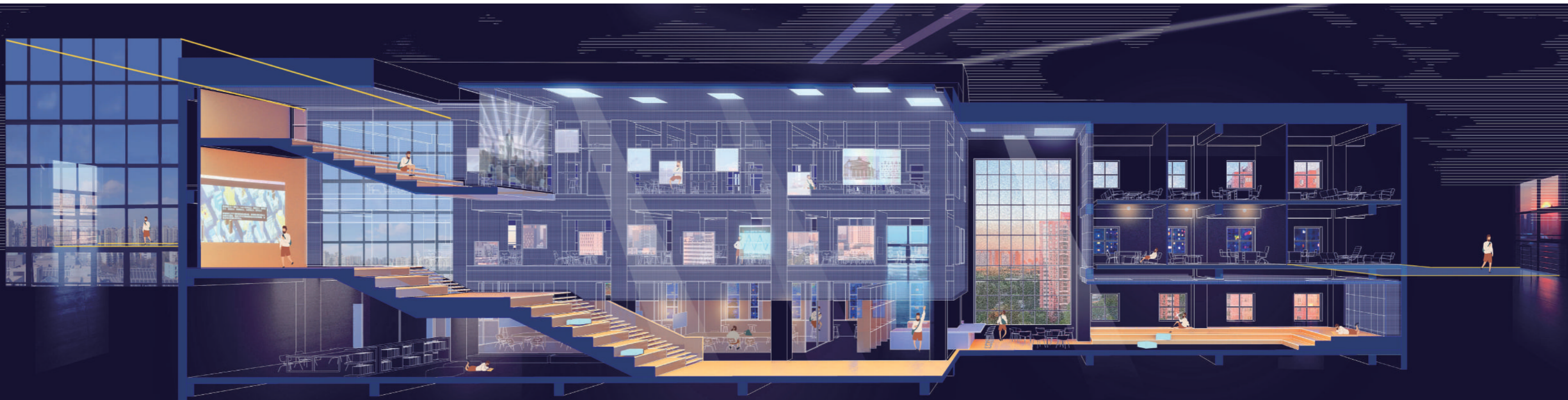
Viewing



Isometric View

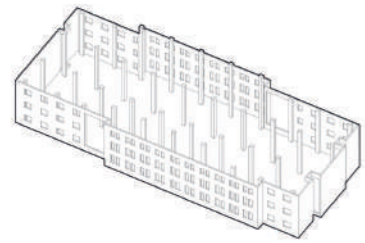
Isometric Projection View

Section



Process

Reaching to the unity of function and form, the quadrangle dwelling starts a new business mode - hutong inn after renovation. The exist of courtyard is for creating public outdoor space where residents could gather and communicate. The new form of the renovation echoes this purpose. By applying a roof garden, the limitation of the four seperated and individual houses has been broken. Meanwhile, interior public spaces has be enlarged. Furthermore, ascending the courtyard expands outdoor spaces in a vertical



Existing Facade



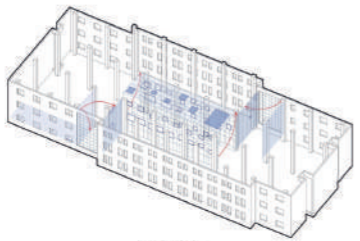
Projection



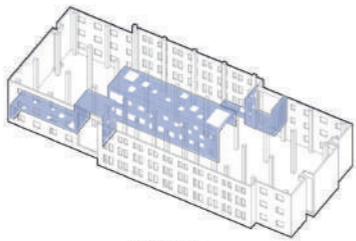
Enclosure



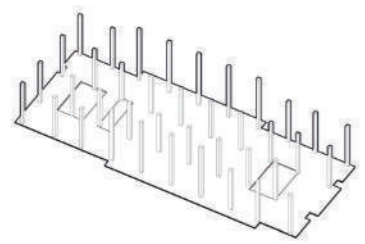
Opening Grid



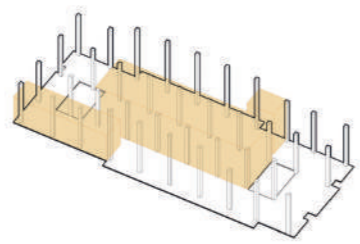
Extension



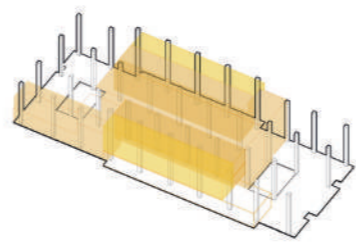
Translucent Box



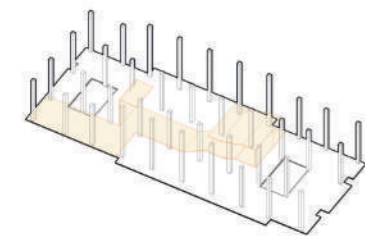
Column Grid



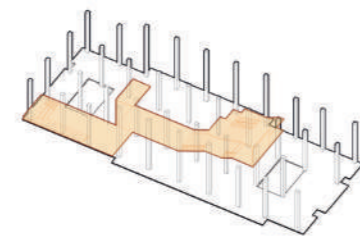
Central Space



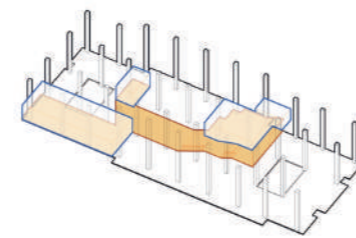
Space Layers



Vertical Connection

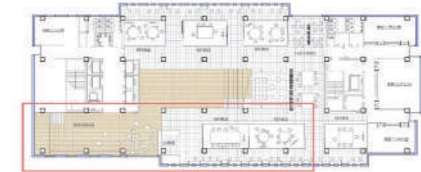
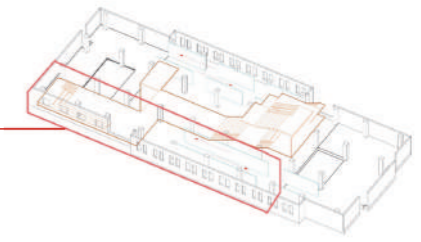


Floor Folding

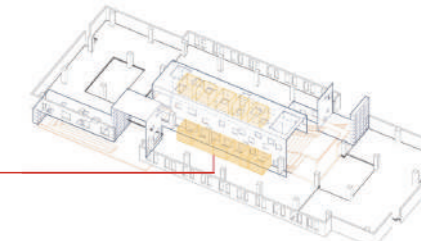


Public Space

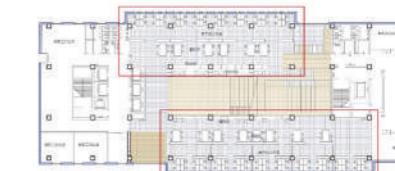
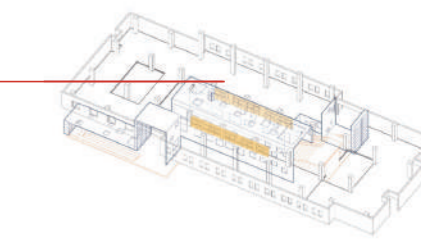
Functional Spaces



Plan #7



Plan #8



Plan #9

Meeting Space



Informa Meeting Space



Studio



Outdoor spaces is an important part of this art site. Open court yard for visitors is a good place where big installations for intervention and show could take place. Court yards between studios where artists could host activities or have chat are comparably private and exclusive. It is also a place for artists to create their work,

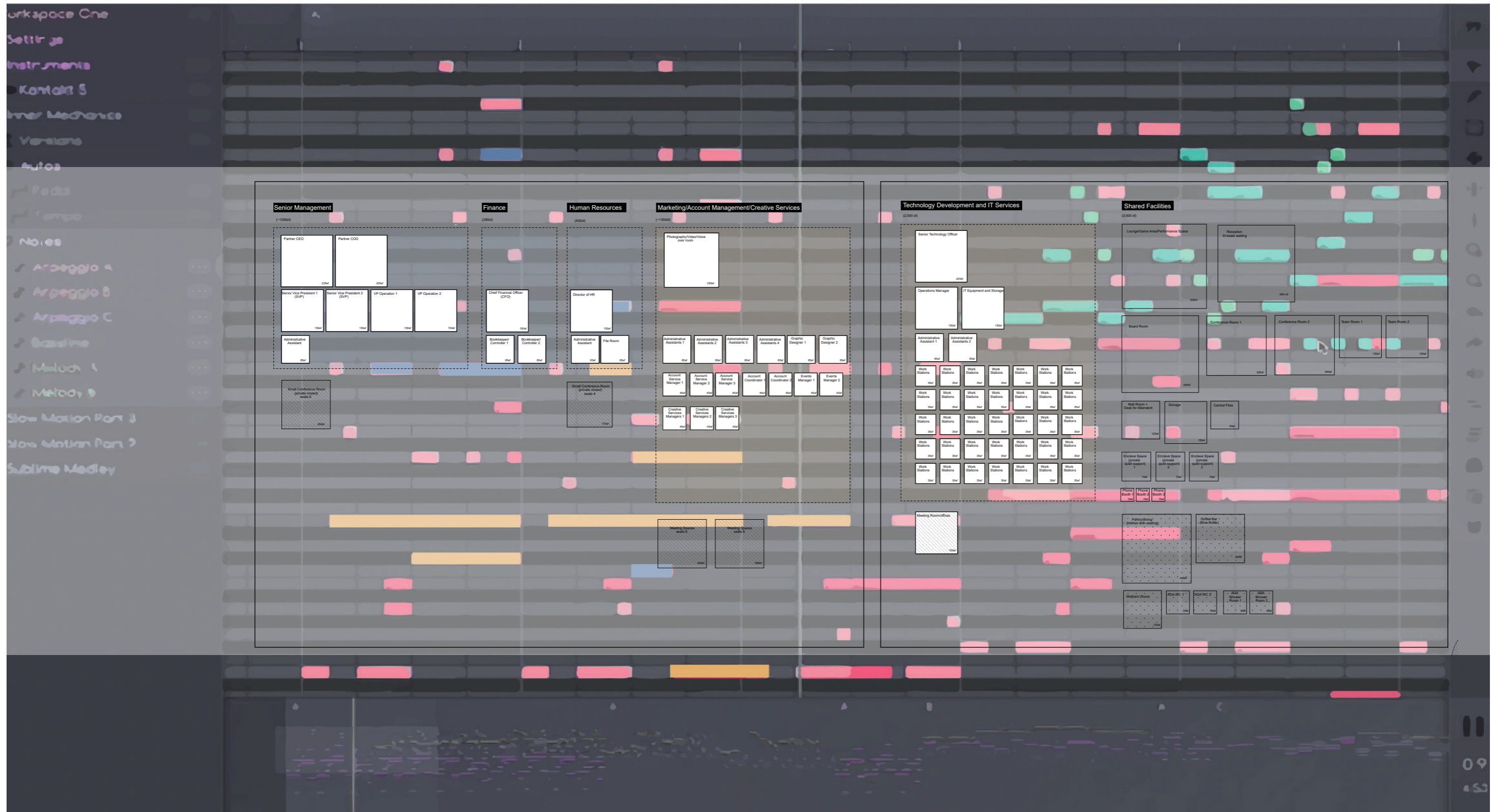
Corridor



Permeability and continuity are critic characteristics of the gallery. From cafe to corridor, from court yard to exhibition room, it's flexible for people to move their steps and enjoy art works consistently.

Model





01. NEW VITALITY: SPIRAL GARDEN AS STRATEGY

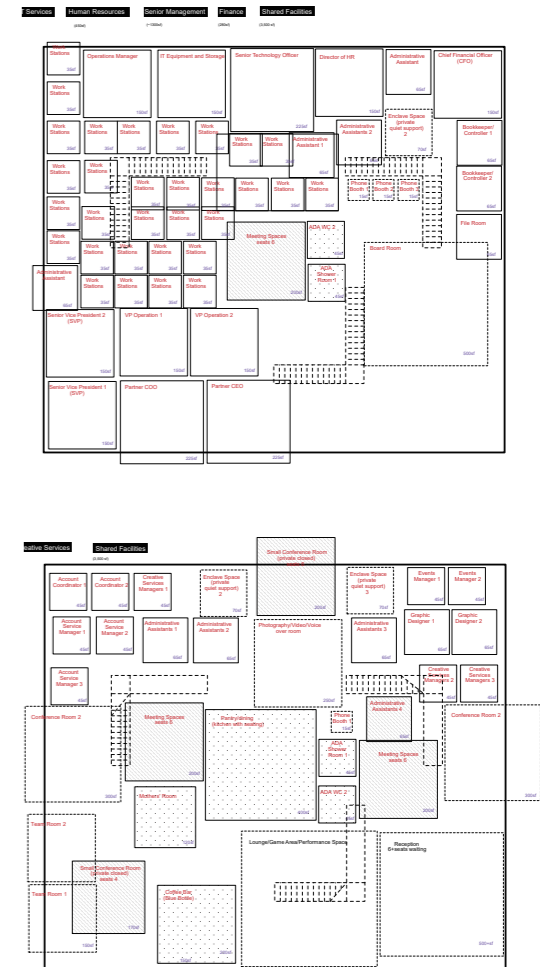
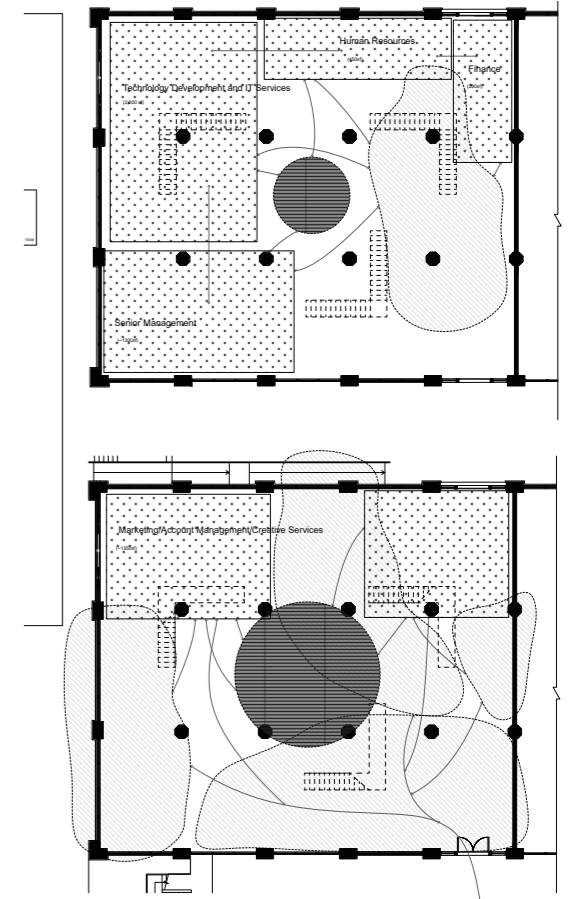
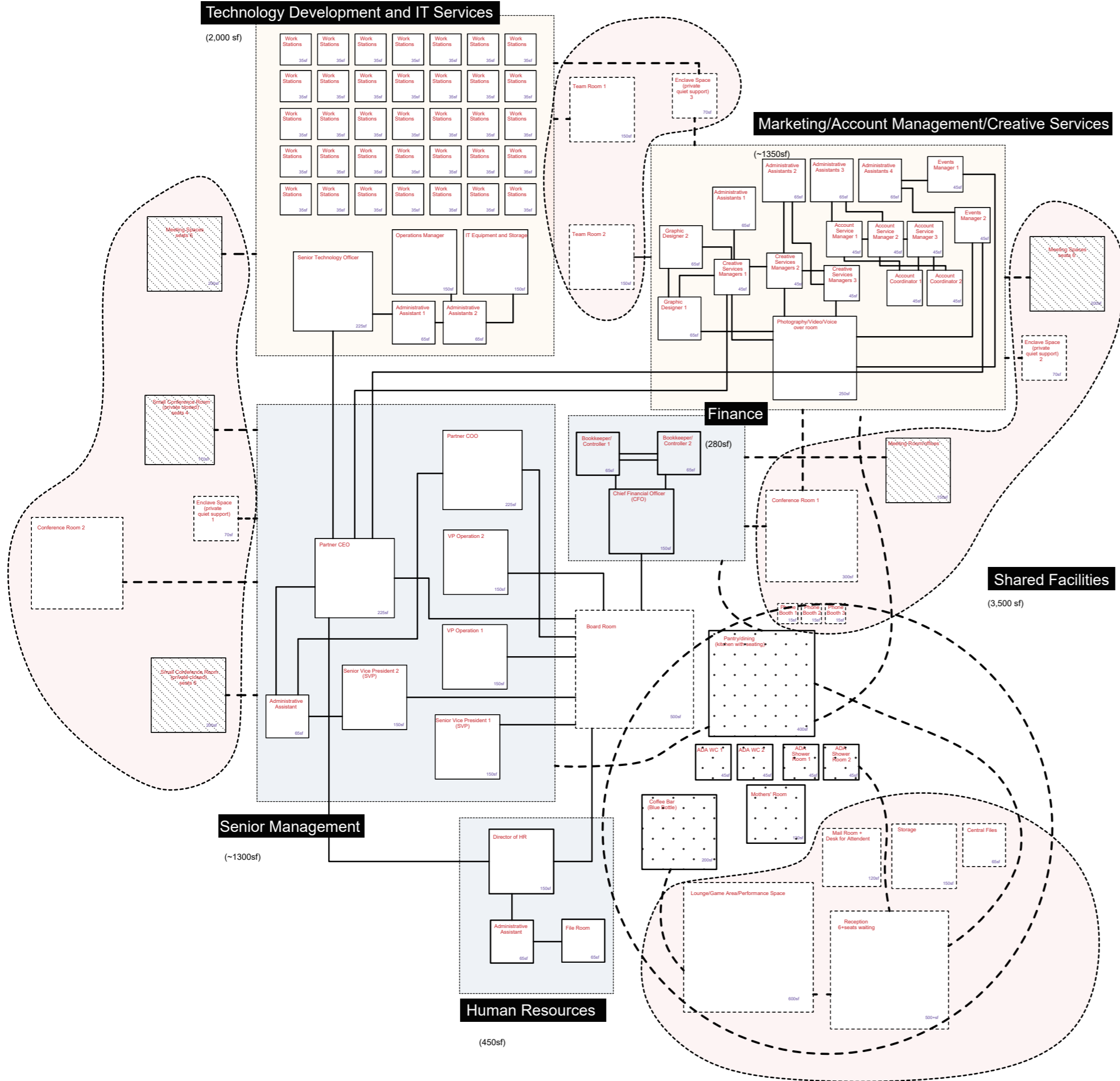
Revitalization of traditional quadrangle dwellings in hutong

'Down by the salley gardens my love and I did meet, she passed the salley gardens with little snow-white feet' -- W. B. Yeats

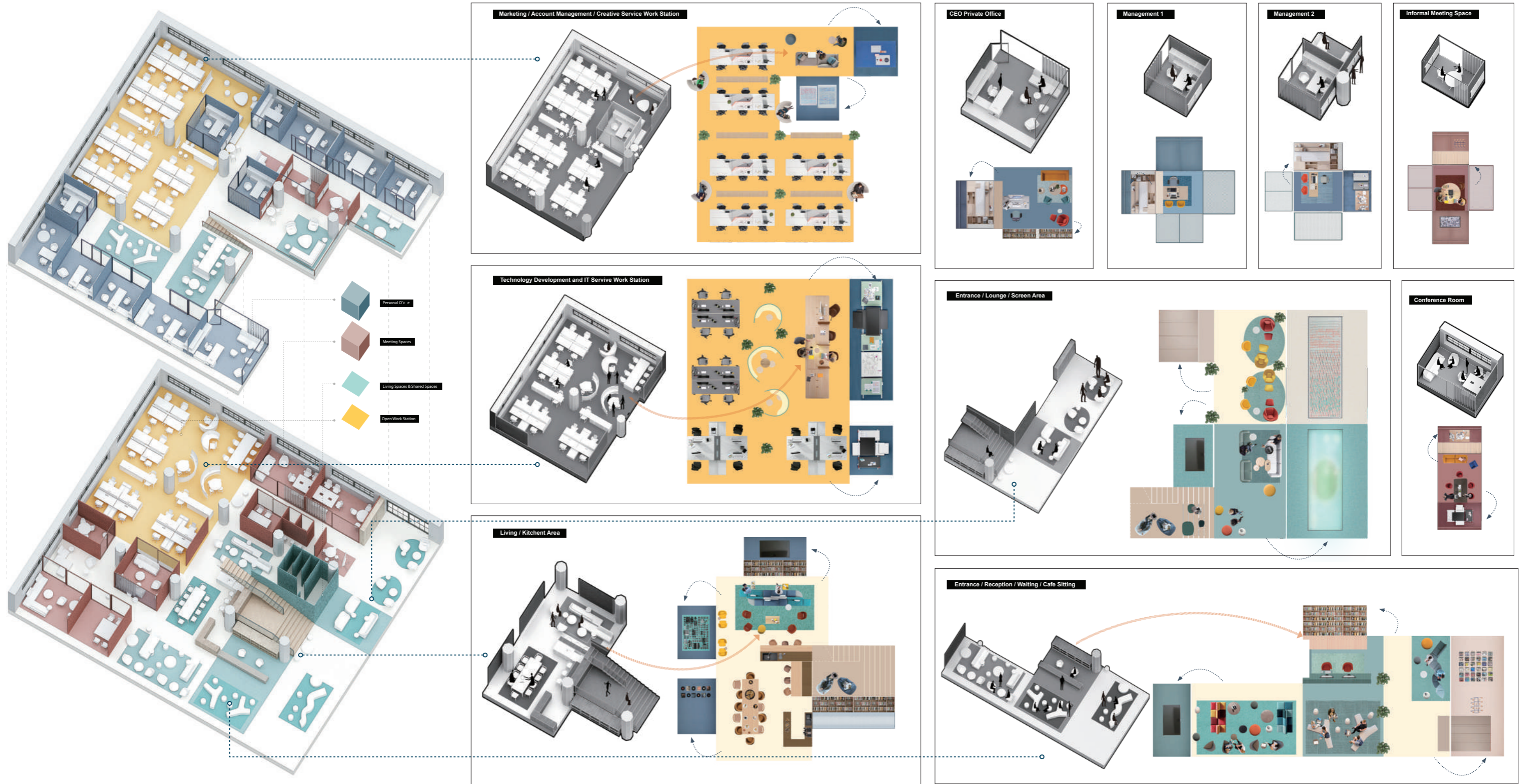
This project focuses on the renovation of the old Beijing quadrangle houses, as a part of the urban redevelopment plan in Dashilar. One of the concerns of this project is to breath new life into traditional courtyard, this is accomplished by a creation of spiral roof garden, which gives more functional indoor spaces and meanwhile, reserve initial purpose of courtyard - close to nature. The main character of this dwelling is a hutong inn, as a new commercial activities brought in traditional district. Public spaces offer new function, as well as the new form of space, colliding with traditional building type and living style.

Location: DASHILAR, BEIJING, CHINA
 Instructor: Han Wenqiang, Yang Yu
 Individual work
 9-12/2016
 in CAFA

organization



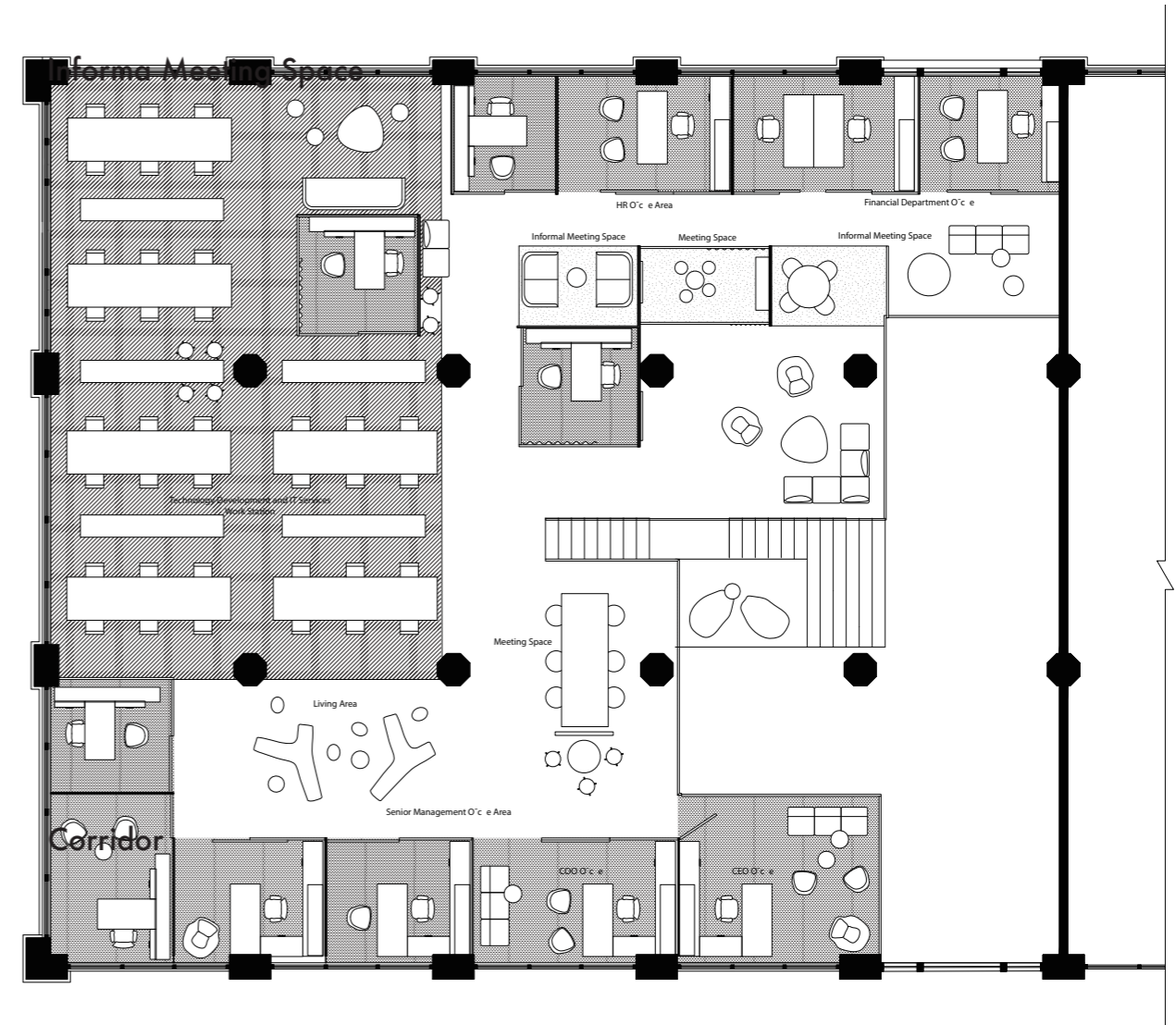
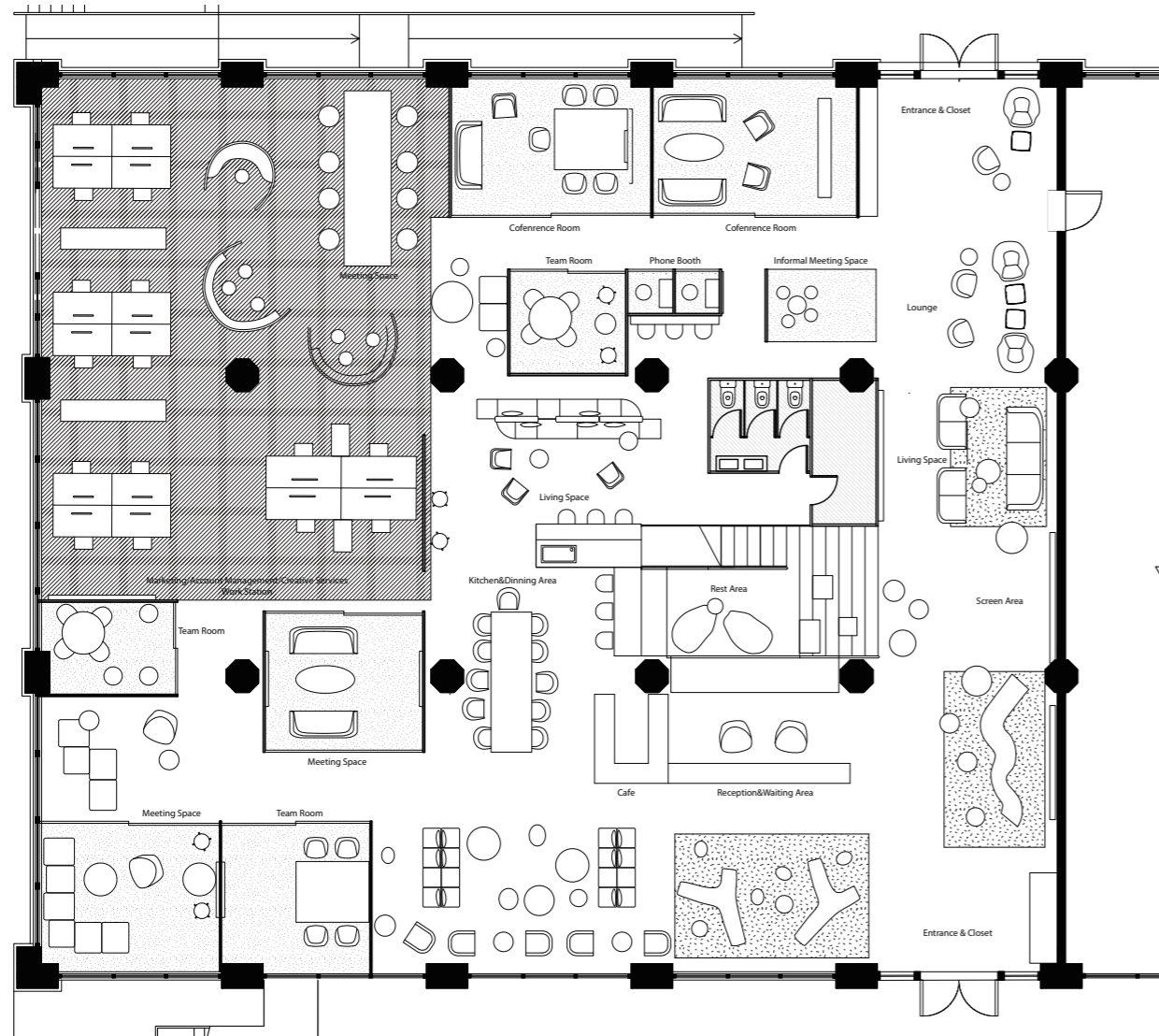
Digital Paste-up & Collage



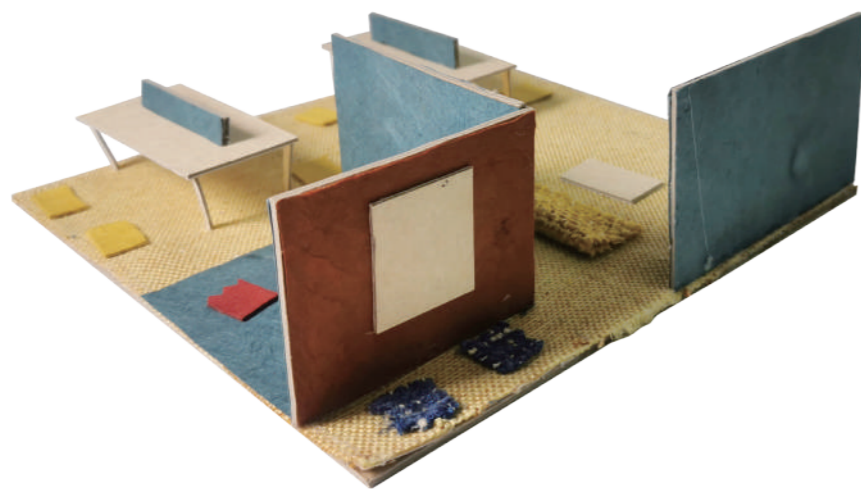
Each individual unit is analyzed and designed in the way from Florence Knoll - The Paste-up, but in a digital way. Colors are used as codes to visualize different functional areas. They define the spaces. The work spaces were produced through the process of extracting them, grouping them, collaging them, with materials and furniture,

Walking through this work place, people see different color panels, carpets, ceilings. They give specific implications of the function in the spaces. With a degree of transparency, those areas are overlapping and collaging with each other, giving an active and lively work place for creating music and videos.

Program



Paste-up



Outdoor spaces is an important part of this art site. Open court yard for visitors is a good place where big installations for intervention and show could take place. Court yards between studios where artists could host activities or have chat are comparably private and exclusive. It is also a place for artists to create their work,

Permeability and continuity are critic characteristics of the gallery. From cafe to corridor, from court yard to exhibition room, it's flexible for people to move their steps and enjoy art works consistantly.

Private Office



Open Office

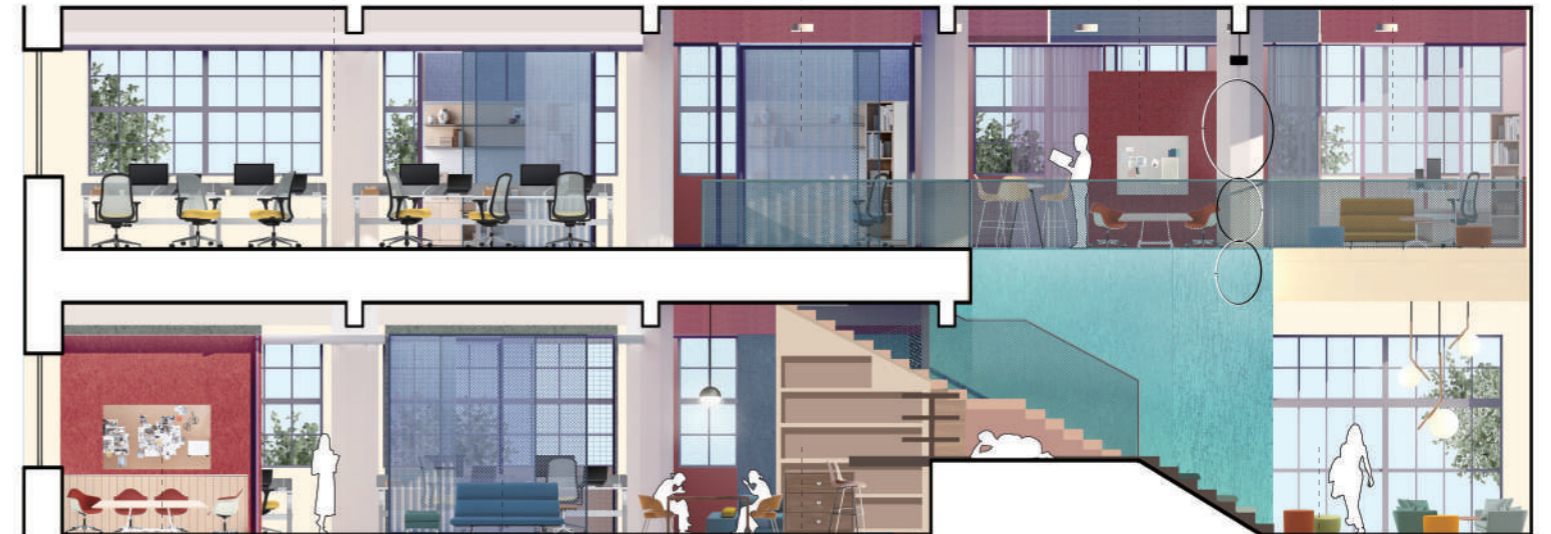


Private Office Informal Meeting Open Office Informal Meeting Private Office



Waiting Area Reception Rest Living Area Phone Booth Conference Room

Open Office Semi-private Office Informal Meeting Meeting Space



Conference Room Meeting Space Kitchen & Dining Atrium



02.COMMUNITY OF DIVERSITY: FROM CELL TO DISTRICT

Shared spaces as connection between labor and domesticity

'You know, it's life that's always right and the architect who's wrong.' -- Le · Corbusier

The investigation of this project center on the relationship between domesticity, labor and urban form. The site for speculation is Tradeston in Glasgow - a historical district adjacent to the river Clyde and the city center, with potential to be a live/work/creative industries node. In all ages, productive activity and domestic provision are the enduring and underlying motivation for collective living. The cultural production that results from the interface between domestic life and productive is of particular interest in contemporary society. This work focuses on sharing space as an architecture form of the connective tissue between their relationship. Across different scales, from the intimacy of a private interior to the design of an urban district.

Location: Glasgow, United Kingdom

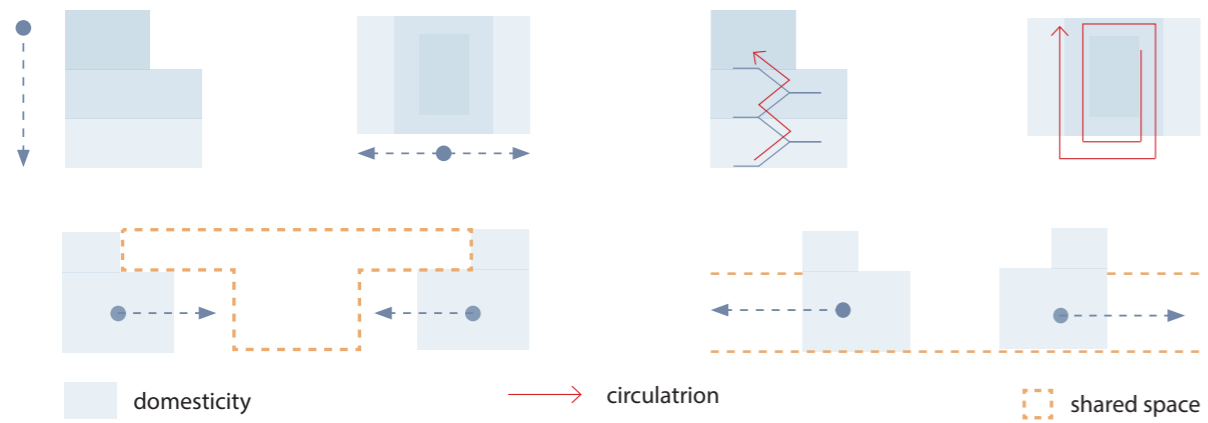
Instructor: Robert Mantho

Individual work

10-12/2018

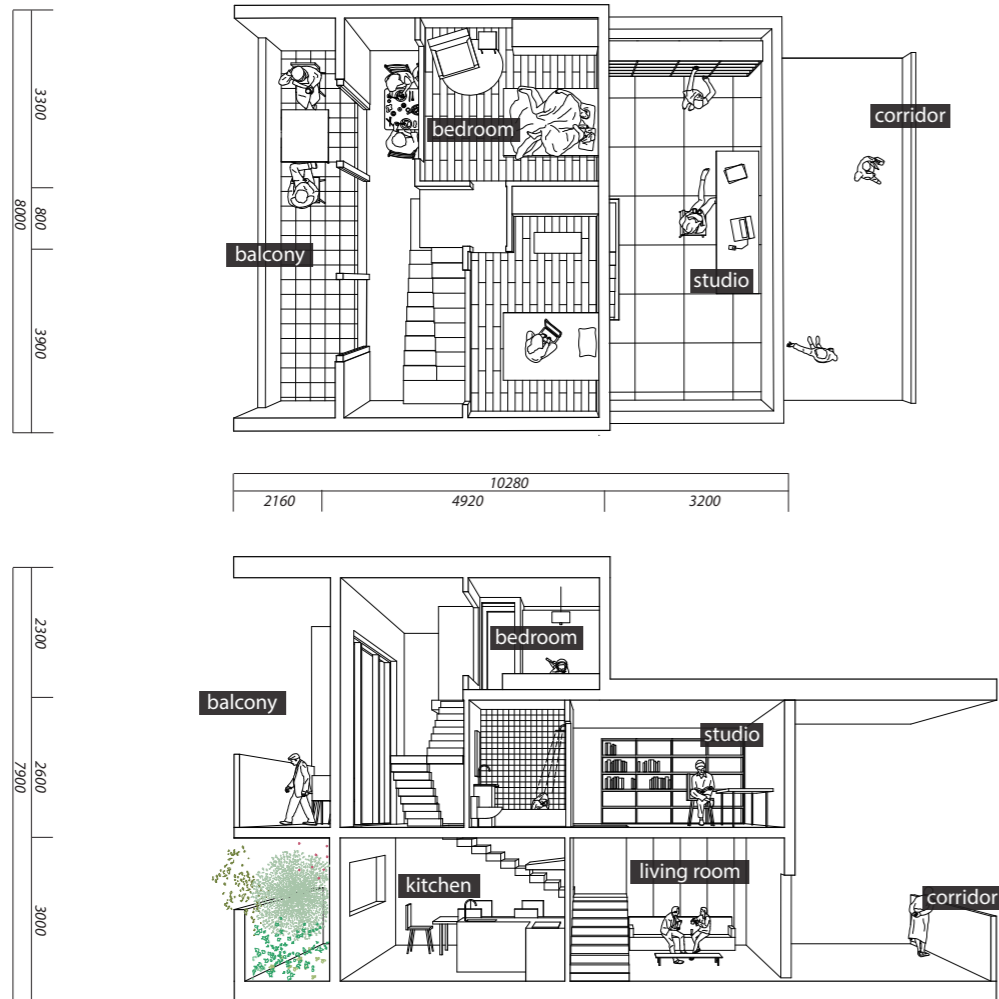
in Mackintosh School of Architecture, Glasgow School of Art

cell

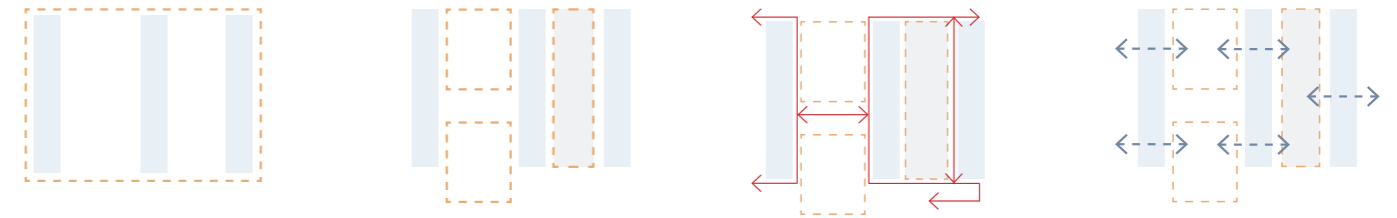


from private to public

The single unit with three stories was designed in such a way that the common area adjoins the shared area inside of building, and the private area - which consists of 2 bedrooms on the third floor, faces the facade of street. Vegetation was strategically placed at the facade as well, which generates green views and ensure the privacy.

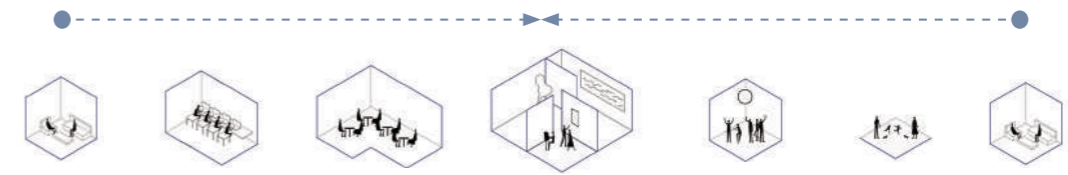


block



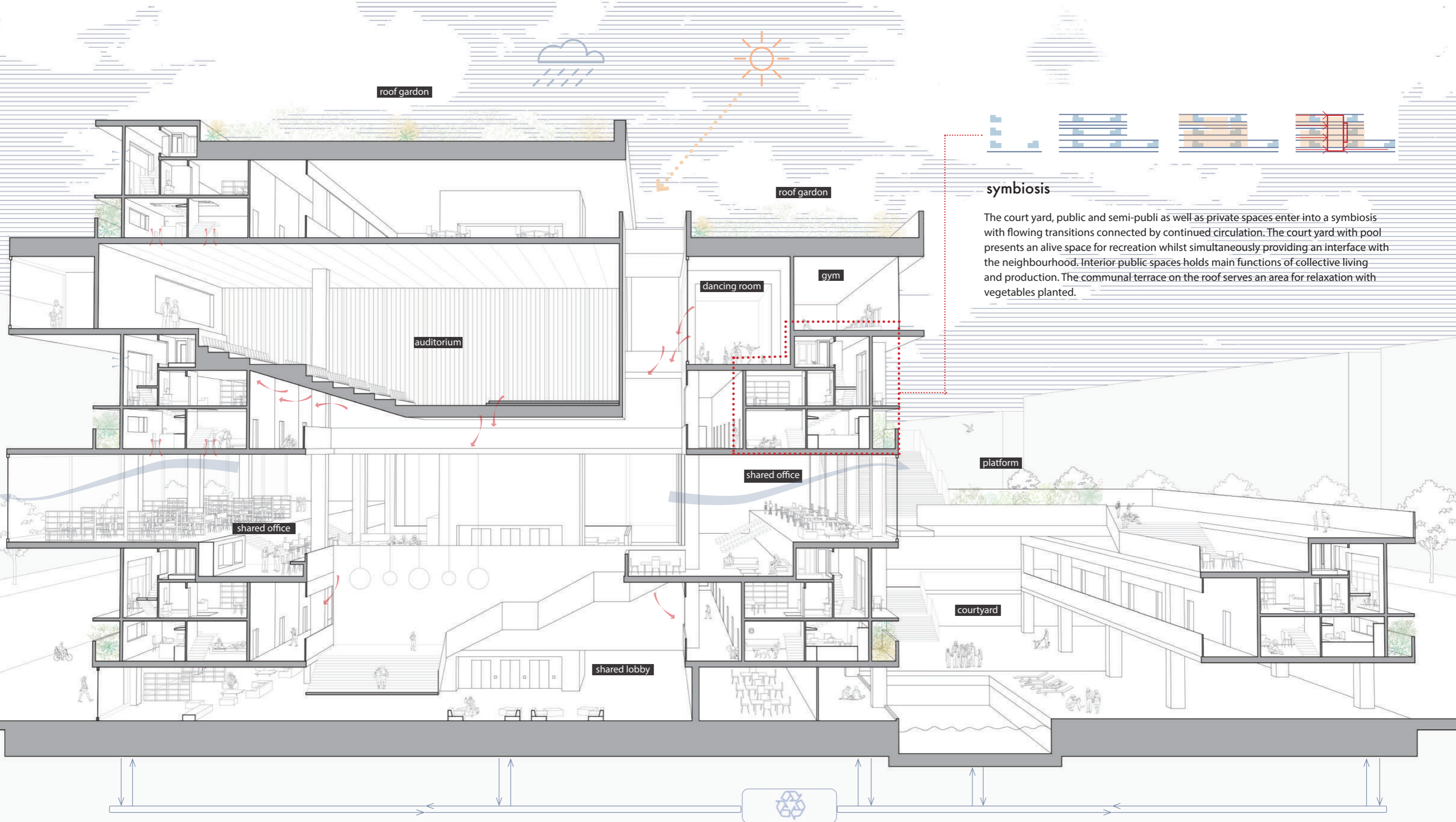
from domesticity to labor

Private cells that offer intimate domesticity distribute evenly within a block. Vacant areas squeezed by them are divided into parts of interior and outdoor spaces. In terms of various form of collective activities from entertainment to production, those spaces turn to serve the needs flexibly.



energy sharing

To accomplish an authentic sharing both functionally and ecologically, the whole block takes the strategy of sustainability, with cross ventilation, natural shading, neutral energy loop, water recycling and vegetation planting. To be mentioned, Photovoltaic energy generation can be applied to building, along with energy transfer. Extra energy produced by sharing space offers heating for single private unit.



symbiosis

The courtyard, public and semi-public as well as private spaces enter into a symbiosis with flowing transitions connected by continued circulation. The courtyard with pool presents an alive space for recreation whilst simultaneously providing an interface with the neighbourhood. Interior public spaces holds main functions of collective living and production. The communal terrace on the roof serves an area for relaxation with vegetables planted.

indoor sharing



shared office



community living room

outdoor sharing



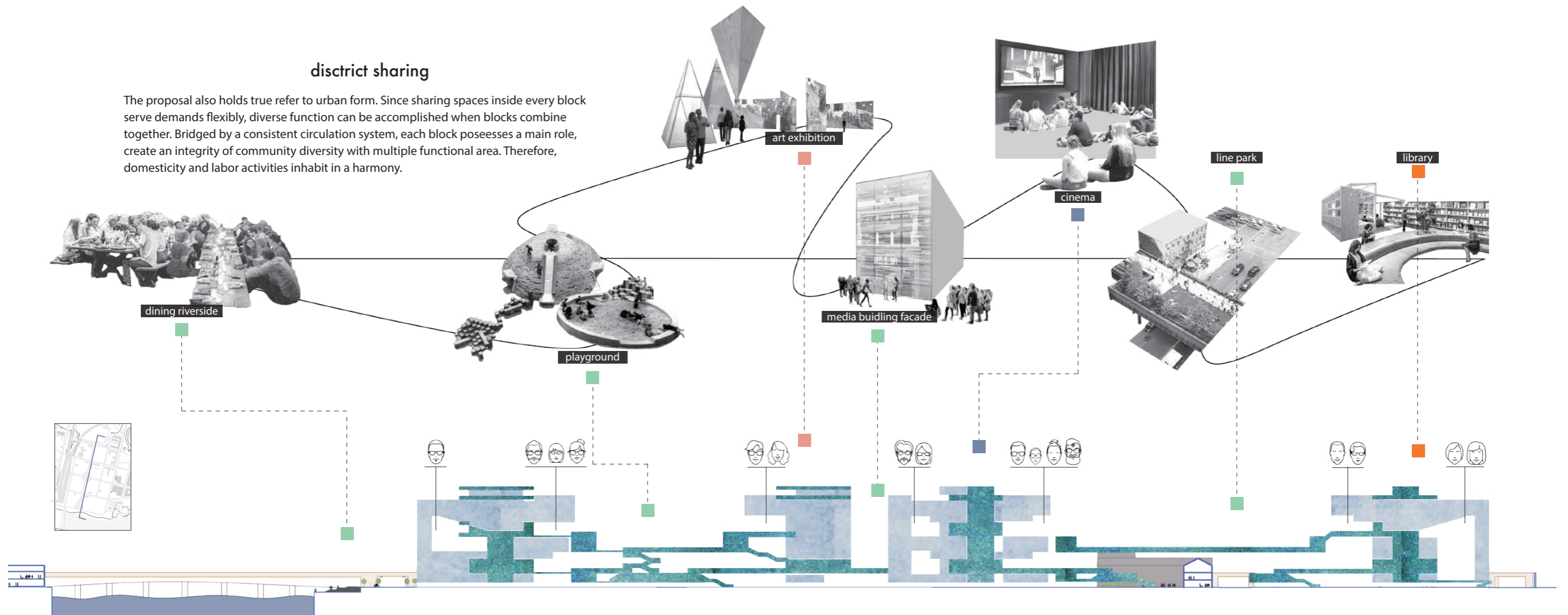
street connection



shared courtyard

district sharing

The proposal also holds true refer to urban form. Since sharing spaces inside every block serve demands flexibly, diverse function can be accomplished when blocks combine together. Bridged by a consistent circulation system, each block possesses a main role, create an integrity of community diversity with multiple functional area. Therefore, domesticity and labor activities inhabit in a harmony.





04.ARTISTIC LIFE: COMBINATION OF STUDIO AND EXHIBITION

Innovation of art site in urban village

'...Contemporary art comes to us through the medium of exhibition...' -- Jean-Marc Poinsot 'Thinking about exhibitions'

As a disorganized industrial area, far away from city center but nearer than suburban and rural areas, CAOCHANGDI has become a place attracting a lot of artists and designers to open their studios. While this place possesses low cost and is comparably quiet, it is not a best place for artists to live and work. The chaotic situation brought by local merchants and migrant workers make it stagnate. Few people come to see art works and visit galleries here. With the intention of building an artistic area, the main strategy is to blend present conditions together and make this district into mixed-use, bringing about innovations and popularities.

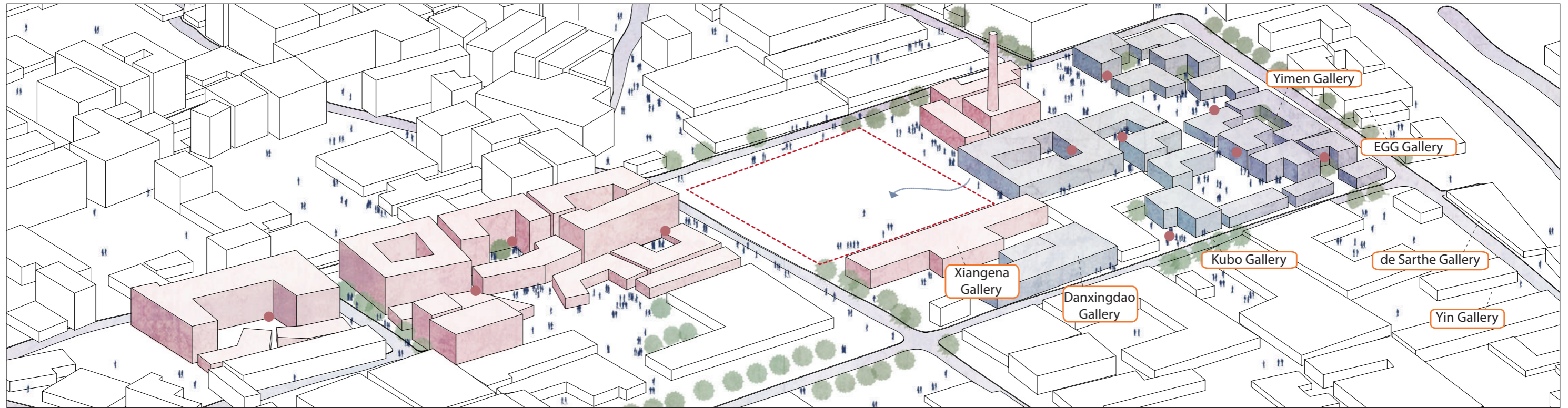
Location: CAOCHANGDI, BEIJING

Instructor: Liu Siyong

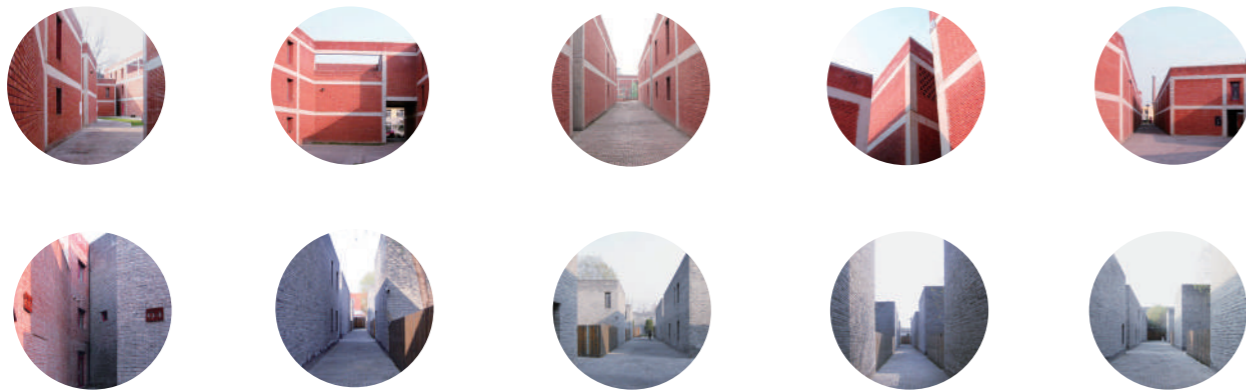
Individual

01-02/2017

in CAFA



● personal studio □ gallery



collision

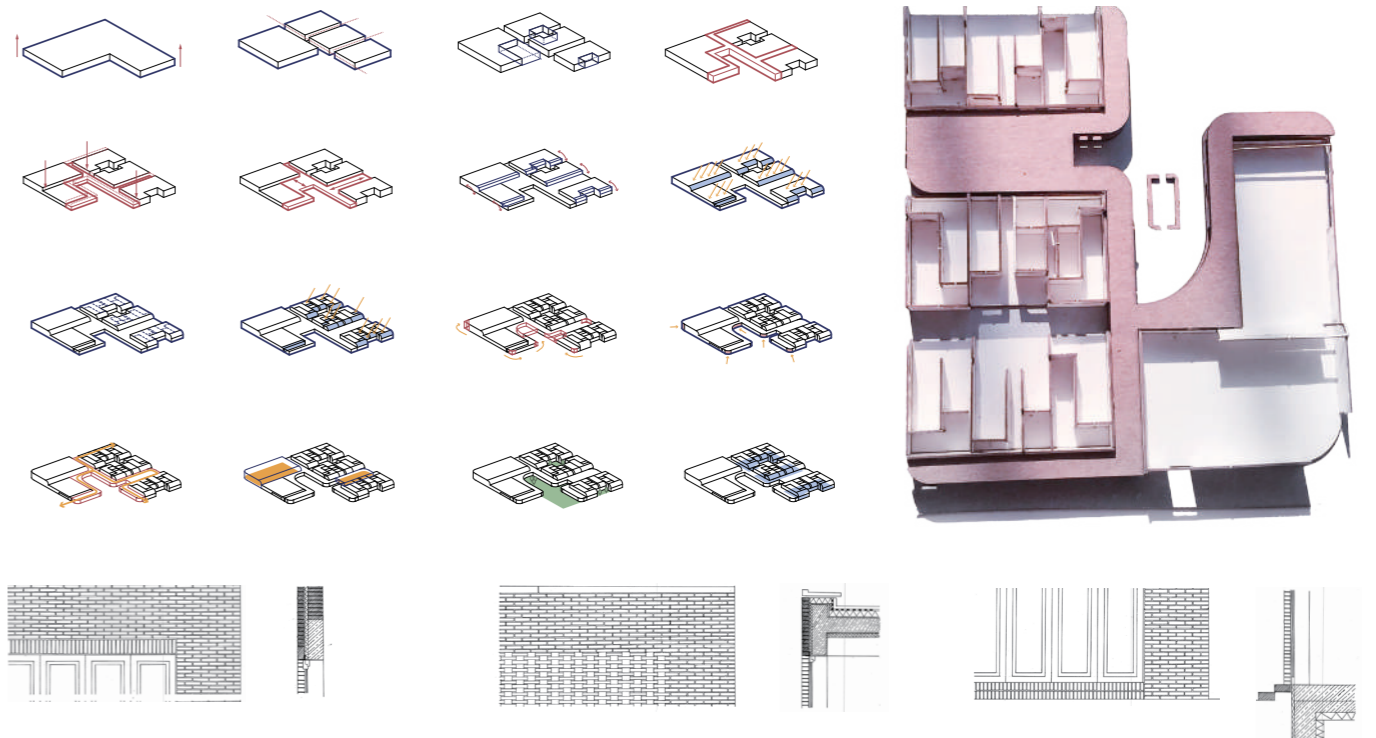
red yard:

Type uniformity is a main character of this area, distributed into two parts. Made by traditional and local red bricks, red yards possess a vintage atmosphere. Buildings in red yard are in relatively larger volumes.

grey yard:

Grey yard occupies the westside. Several small houses made by grey bricks with a courtyard compose half the area. Simple and modern are main tones in contrast with the traditional and vintage style of red yard.

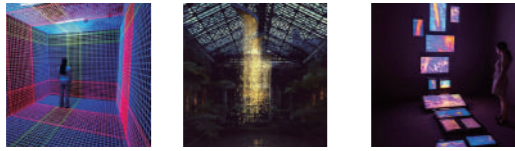
process



balance

In between with the grey yard and the red, the new building massing tries to find a balance. Given the complicated and chaotic building context in the whole CAOCHANGID District, it's not rational to create a new form of architype. But its important to break those two blocks, connecting them and making more public spaces.

exhibition



light and video



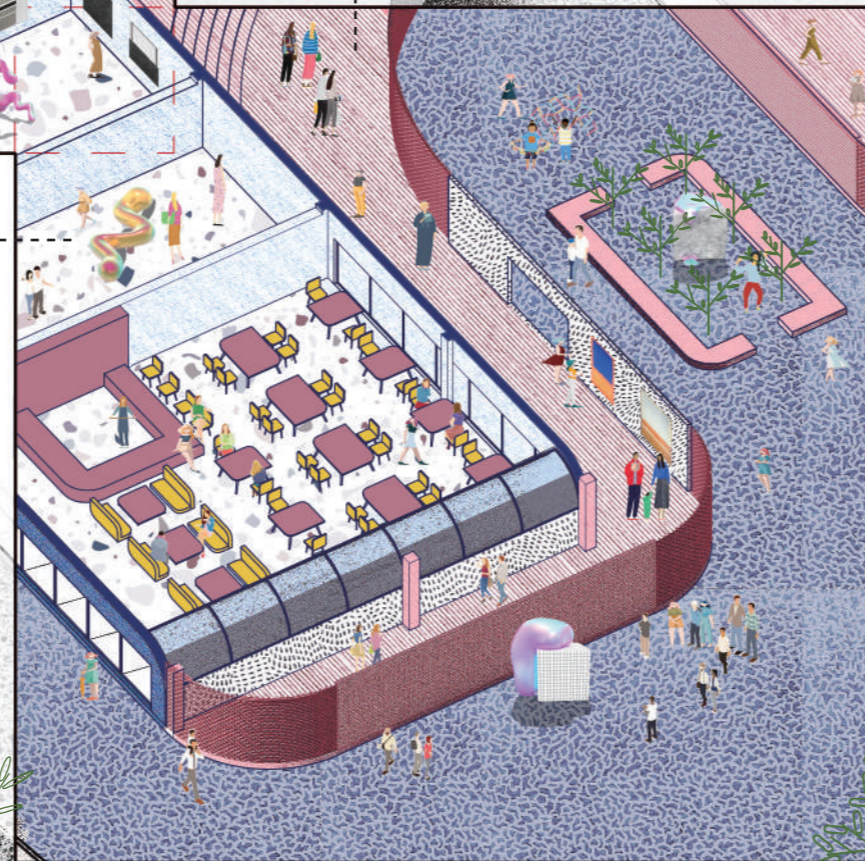
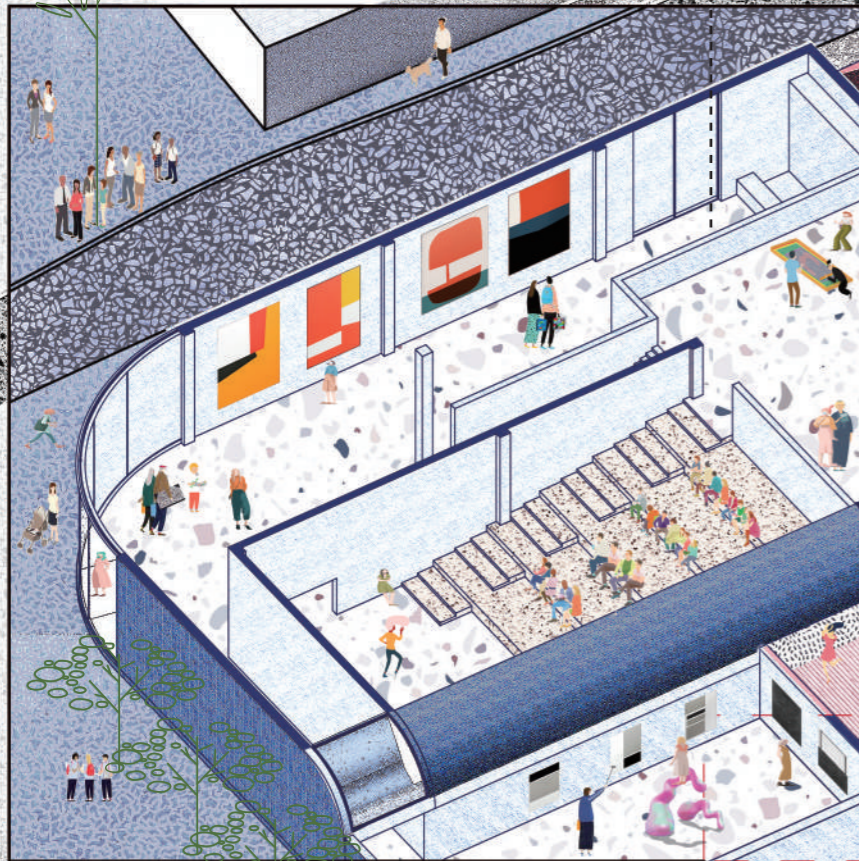
outdoor installation



corridor exhibition



objects



immerse scene

outdoor installation



permeation



outdoor creation



corridor



Outdoor spaces is an important part of this art site. Open courtyard for visitors is a good place where big installations for intervention and show could take place. Courtyards between studios where artists could host activities or have chat are comparably private and exclusive. It is also a place for artists to create their work,

Permeability and continuity are critic characteristics of the gallery. From cafe to corridor, from courtyard to exhibition room, it's flexible for people to move their steps and enjoy art works consistently.



05.FUTURE LIVING: BEYOND SKYSCRAPER

exploration of extended living space in 2030

'A well-planned life should have an effective climax.' -- Paul Starrett, Changing the Skyline

In 2030, most floor area in the city will be occupied. Commercial and residential buildings build up to a grand city forest. A small but complete type of house would be a trend. people could live and work within a basic and unit space due to sensible design of space function and artificial intelligence.

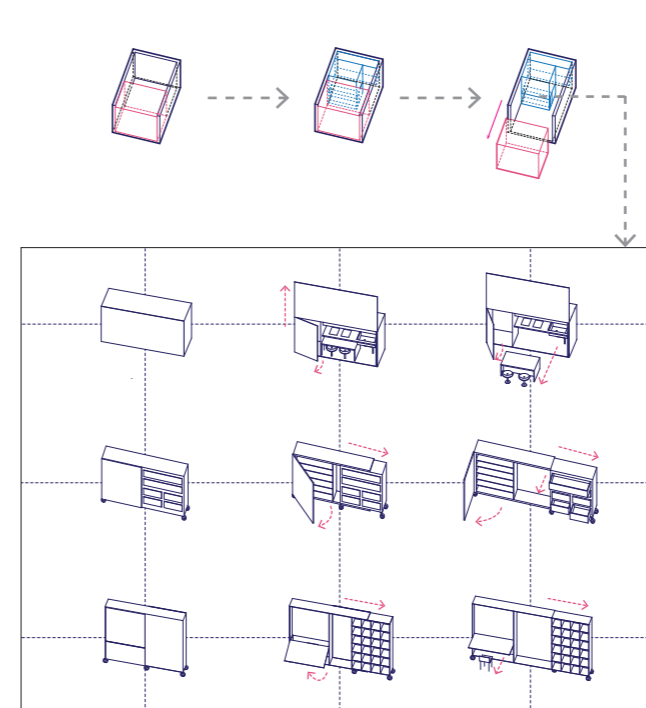
A house is more than a definition of home. It could be a working space, a screen offering grand city view, a base storing personal information, a device by which people can contact with other house, even a movable transportation...

Location: Bijing
Instructor: Fu Yi, Han Tao, Han Wenqiang
Individual work
07-08/2018
in CAFA

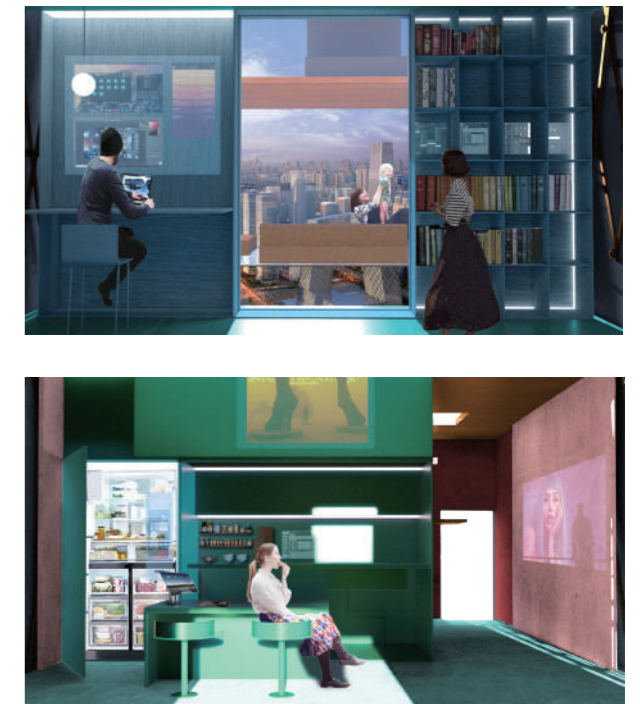
function



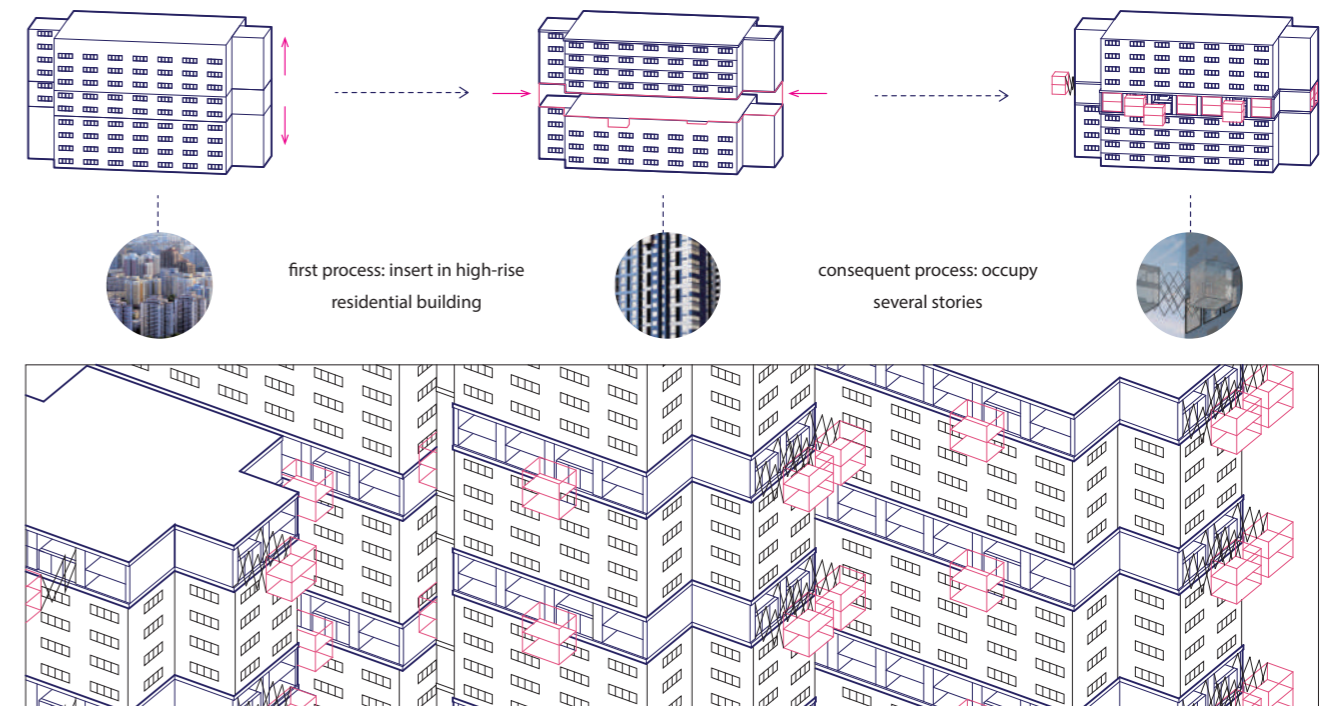
module



technology



insert



Imagining waking up among the city forest, celebrating surrounded by city night scene. All the activity could happen in the stretched glass box, like floating in the sky. This is a unique and special scene in a modern future city. Certainly, digital devices and intelligence furniture will cover the whole box, making it private and comfortable for living.

To broaden living space but not to occupy any more floor areas, a stretching box becomes an approach. When it's inside, the house could be a bedroom and a living room. When it stretches out, several functional module furniture develop different type of space. Furthermore, the extended box create an intirely special and excited experience of living in a modern city.

Other Works

A BITE OF YUNNAN

observation and expression of minority dining culture



Our studio took the trip to Jianchuan, a small town in South China in order to gain social cognition and practice. Through the perspective of cultural anthropology, through the study of field survey methods, we studeied urban public space and human behavior.

As for my work, by careful observation and record of the dinning culture including food, kitchen untensils and lay out of local restaurants, I systematically research and collect all the elements. Then, through a thinking process of summerize and refines, a series of illustrations with subjective expression became the production of my research.

Location: JIANCHUAN, YUNNAN, CHINA

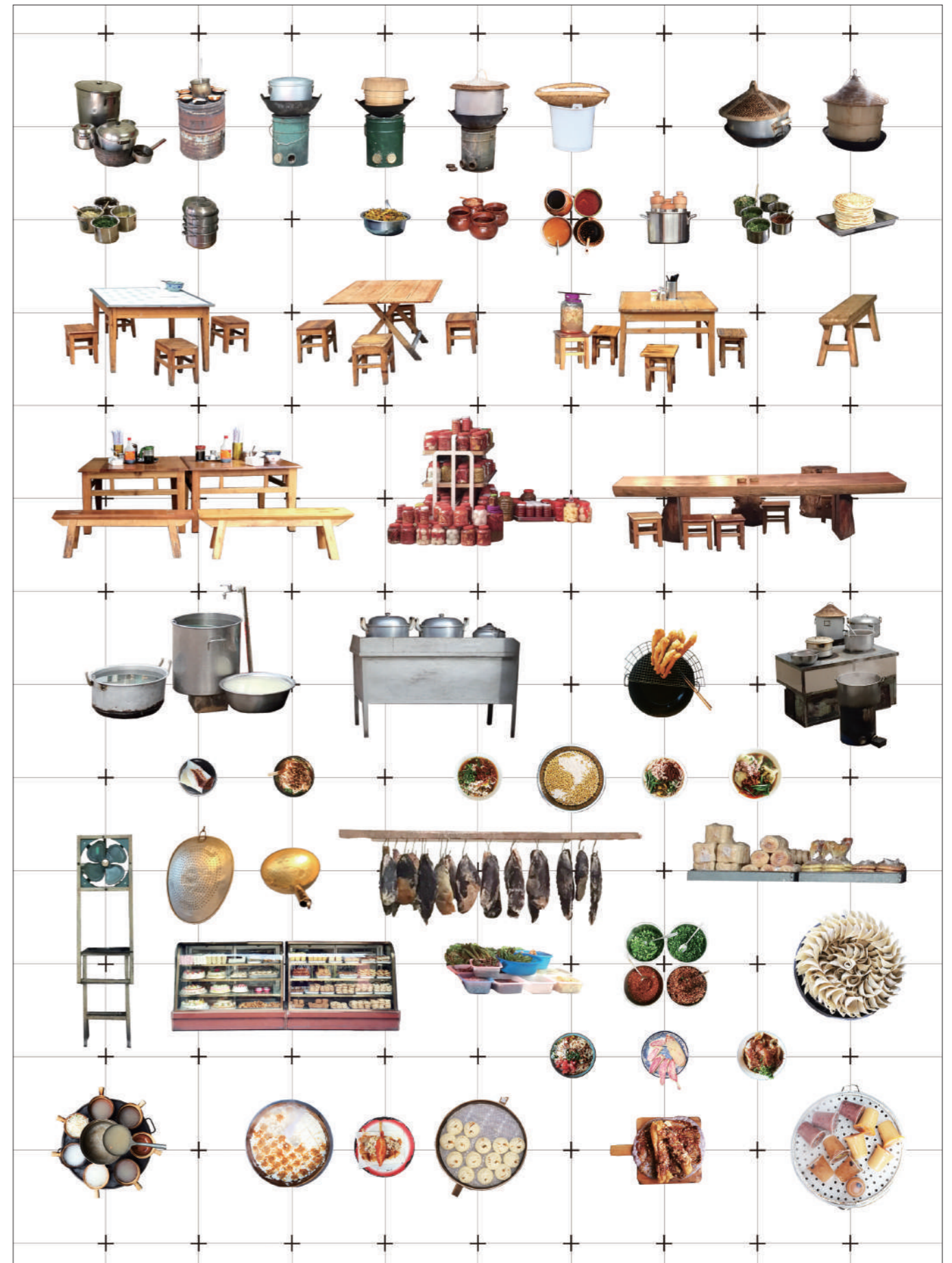
Istructor: Fu Yi

Individual work, social practice

04-05/2017

in Yunnan

elements





recombination

By summarize and refines, four types of local restaurants were generalized, along with their characteristic food and utensils. Native people with local distinctiveness were divided into four main groups. Reorganizing all the elements and combining them into graphic expression, a vivid picture of local culture and atmosphere comes into view.

