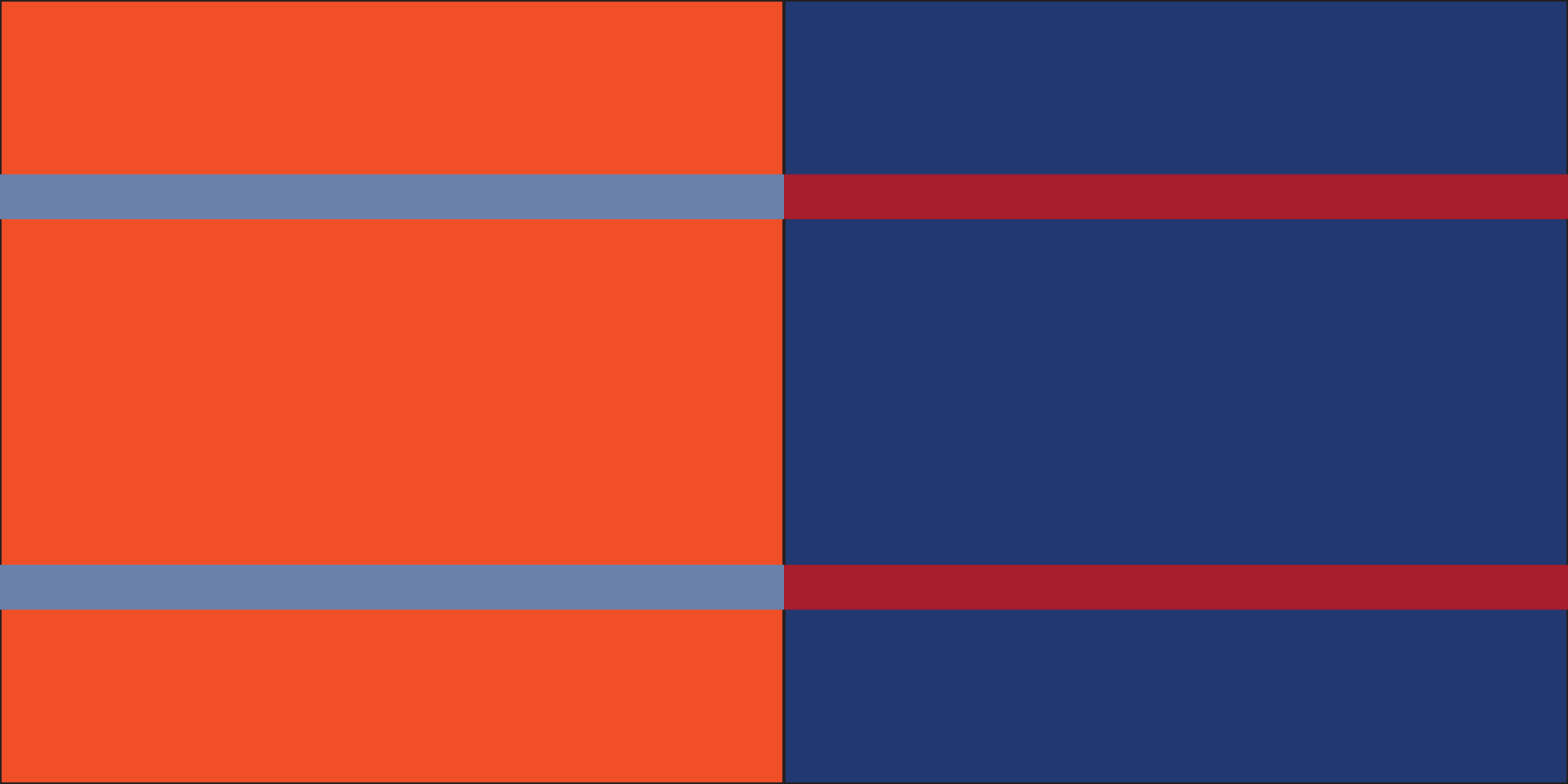




ANTHONY MIKSAD



01

Orchestrated Interstice

This performative residential home explores the concept of overexposure.

17

Courtyard Water House

This high end residential project is a direct reaction to rising sea levels in Hamptons, NY.

29

Linear Water House

This low income housing proposal is a direct reaction to rising sea levels in Brooklyn, NY.

37

Mono Sabio

This group restaurant design in Brooklyn, NY is based off of the artistic expression of Frida Kahlo.

45

Pashchim Hostel

This group Hostel project in Kathmandu, Nepal addresses restoration and preservation.

55

United Nation’s Office

This commercial project in New York, NY created a nostalgic and collaborative work environment.

61

Volution

This design based on a spiral, created a calming environment as reprieve from technology.

67

Artistic Explorations

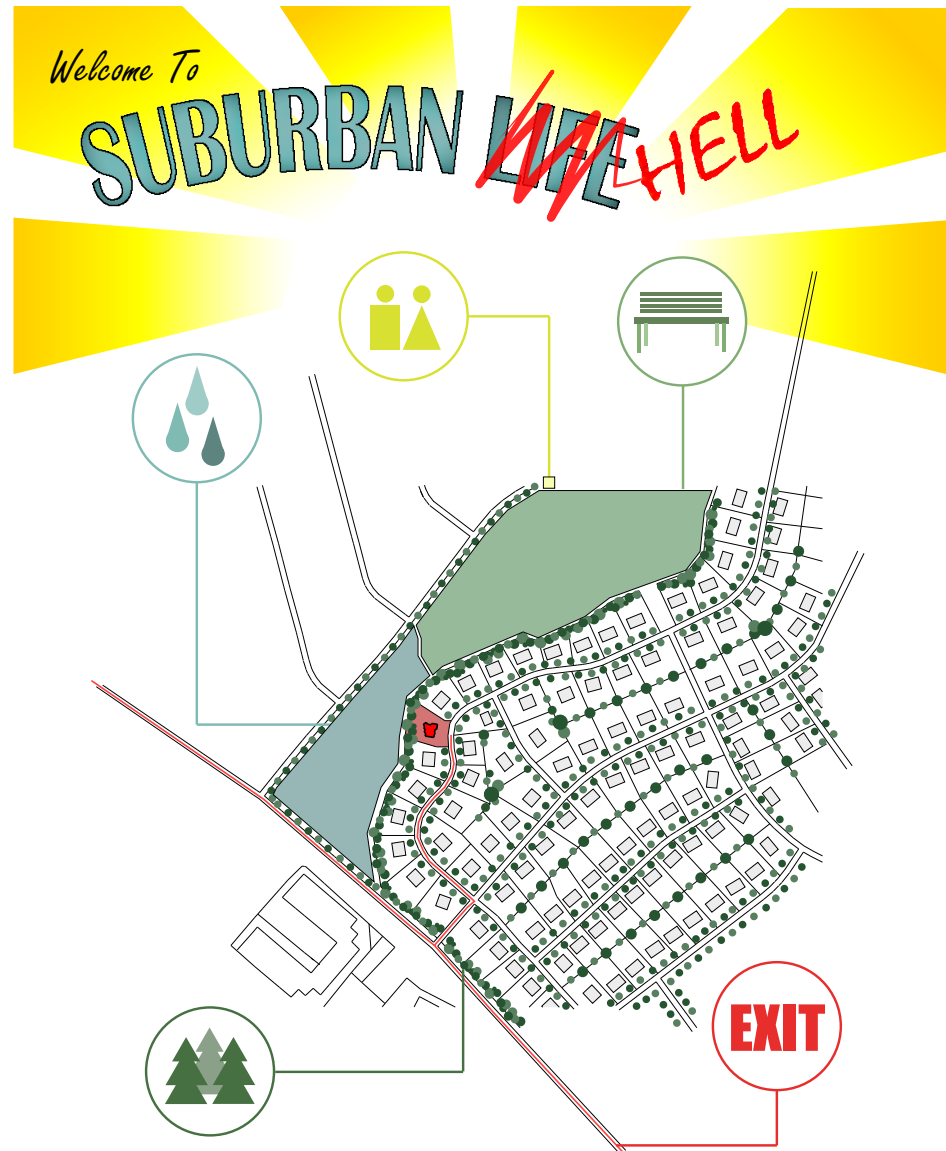
This is a collection of Textile Design projects and Production Design.



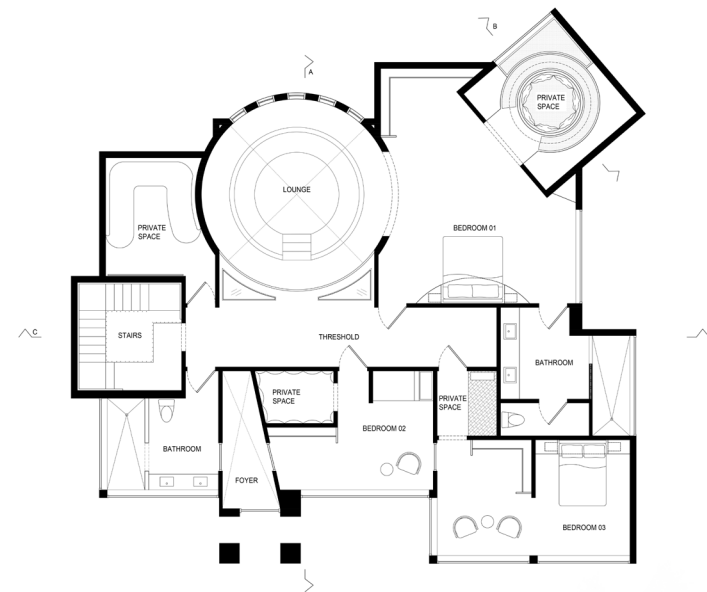
Orchestrated Interstice

Advisor Annie Kwon

This project is a reaction to the overexposure encountered in an idyllic suburban community. This performative study will analyze the relationship between the community and the inhabitant, the occupant with the other members of the house, and the inhabitant with themselves. The interior will express the exterior architectural elements, and create a series of visual thresholds that expose the users while they interact within the spaces. This project will use materials, lighting, and specific design interventions derived from different decades of suburban design, that will help pull the users out of the typical suburban landscape, and immerse them in a malformed reality.



SITE CONTEXT - EXISTING HOUSE

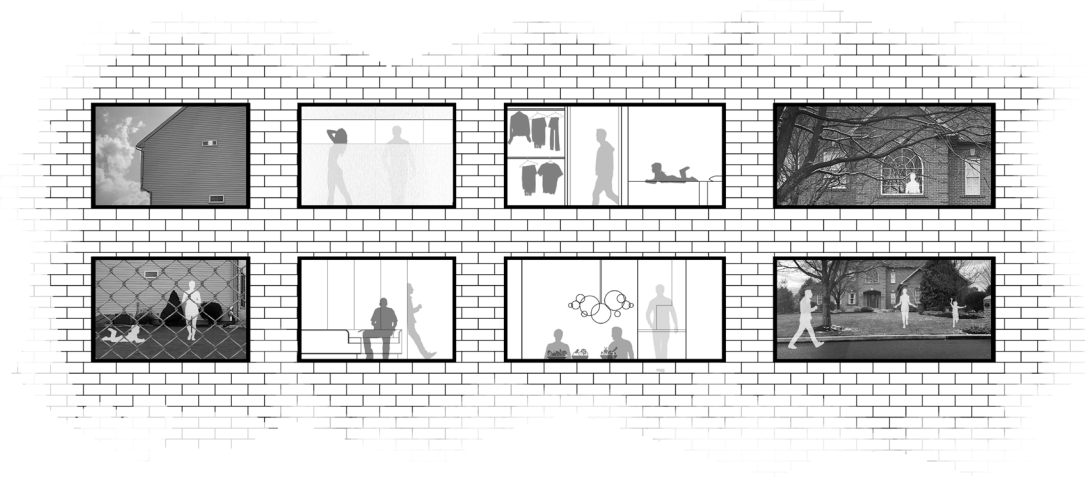


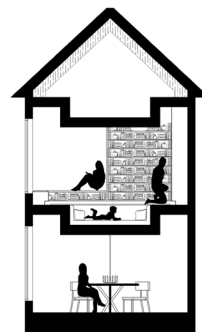
PRIVACY IN SUBURBIA

Below is photo documentation of the public boundaries of a suburban environment. The photographs are broken down into two categories: Intrusive and Safety Zones. While walking through the neighborhood, the inhabitant feels a sense of restriction when it comes to land ownership. The houses are set far back enough from the paths that you cannot touch them, but close enough that you can see into the windows.



This boundary being established by the homeowners creates a performative environment. This performance allows neighbors to watch over one another and view what they are purchasing, who they are socializing with, and how they go about their day to day lives. My design attempts to enhance this voyeurism by creating large glass viewports on the exterior of the house to allow the occupants to “perform” for the surrounding neighbors.













COURTYARD WATER HOUSE

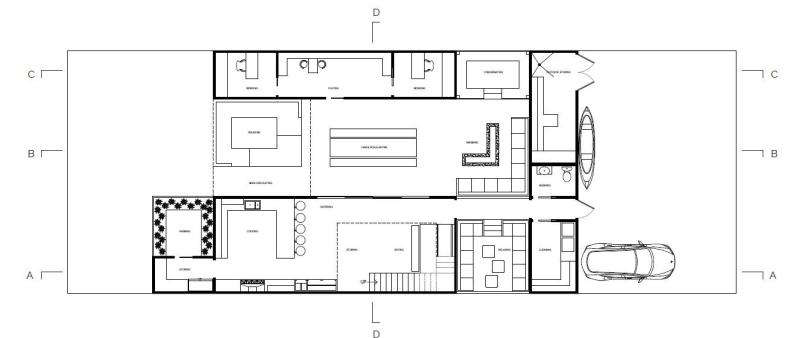
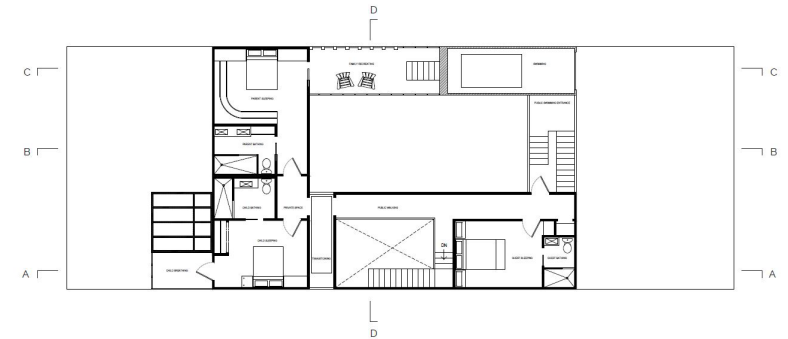
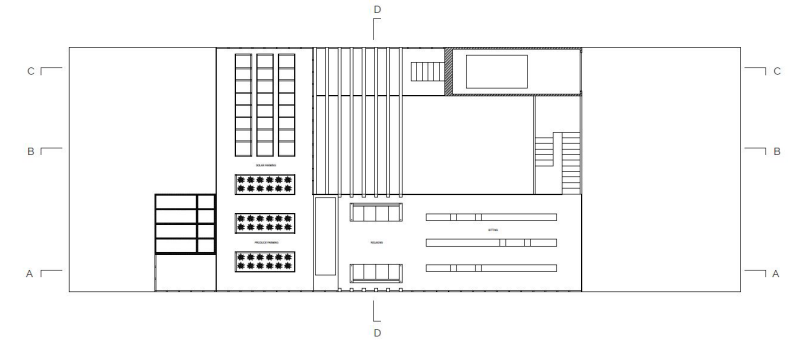
Advisor - David Ling

This high-end design in Hamptons, NY has a large focus on sustainability, without the loss of space. Three scales of farming have been seamlessly integrated into the design, including herb farming in the landscaping and a greenhouse off of the kitchen. Open concept space planning allowed for a central courtyard and gives a distinct separation between public and private space. The house is an entertainment hub with multiple levels of lounge areas, a screening room, outdoor dining table, and rooftop deck with produce and solar farming.



THE VESSEL

The proposed house consists of a total of eight shipping containers and six Flexifloat platforms. The layout of the containers allows for a central courtyard, which helps divide the public entertainment spaces from the private ones. The home is designed for a family of four, with dedicated offices, playroom, pool, and multiple lounge areas. There is also a large moveable glass wall in the kitchen, allowing for easily accessible indoor / outdoor circulation.









SUSTAINABILITY

The layout of the containers allows for a central courtyard, a front and back yard, and multiple rooftop decks. These outdoor spaces are primarily entertainment areas, with an underlying program of sustainable production of energy and food. There are three scales of gardening and solar panels. The Flexifloat platform structure, underneath the house, is hollow and holds all of the plumbing, filtration systems, and irrigation lines.

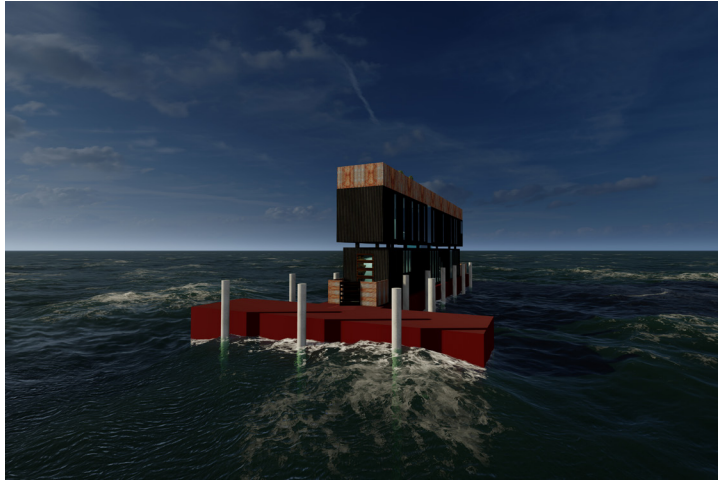




LINEAR WATER HOUSE

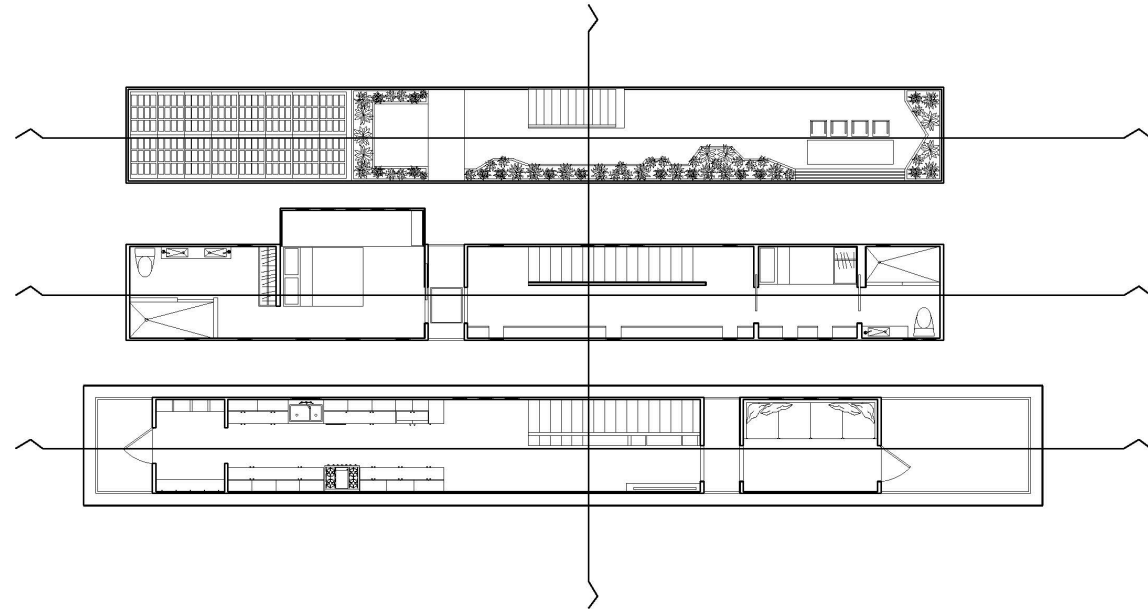
Advisor - David Ling

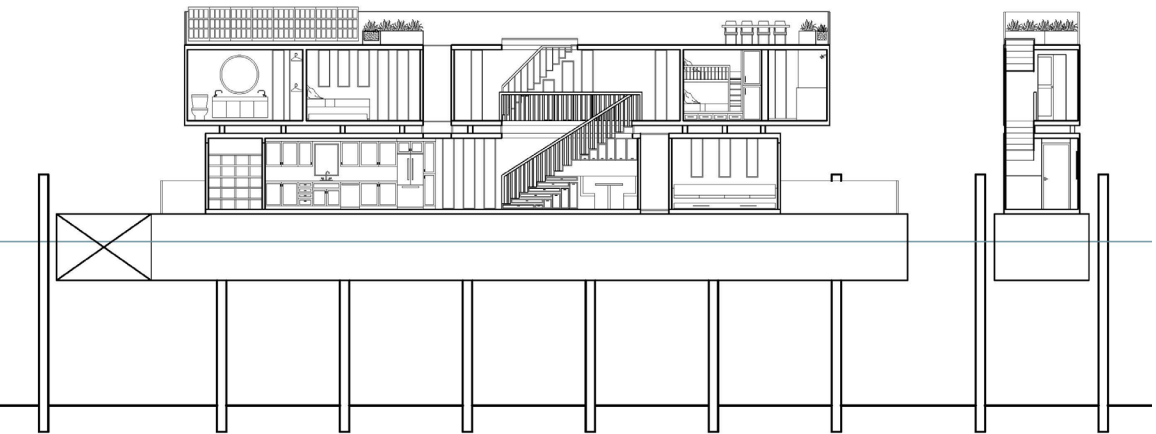
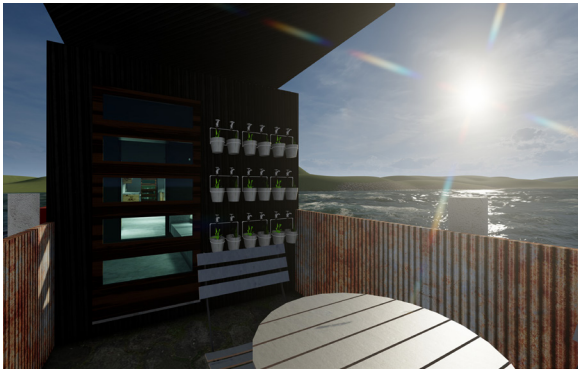
This project reuses shipping containers to create a modular home accessible for low-income housing. Sustainability is a key factor in the design by adding three scales of farming within the confines of the house. The linear home fits a family of four, and has enough space for two bedrooms, two bathrooms, and a complete living area. There are also two outdoor spaces that help the occupant with both produce and solar farming. The home was designed to be repeated in a nested configuration for housing development.

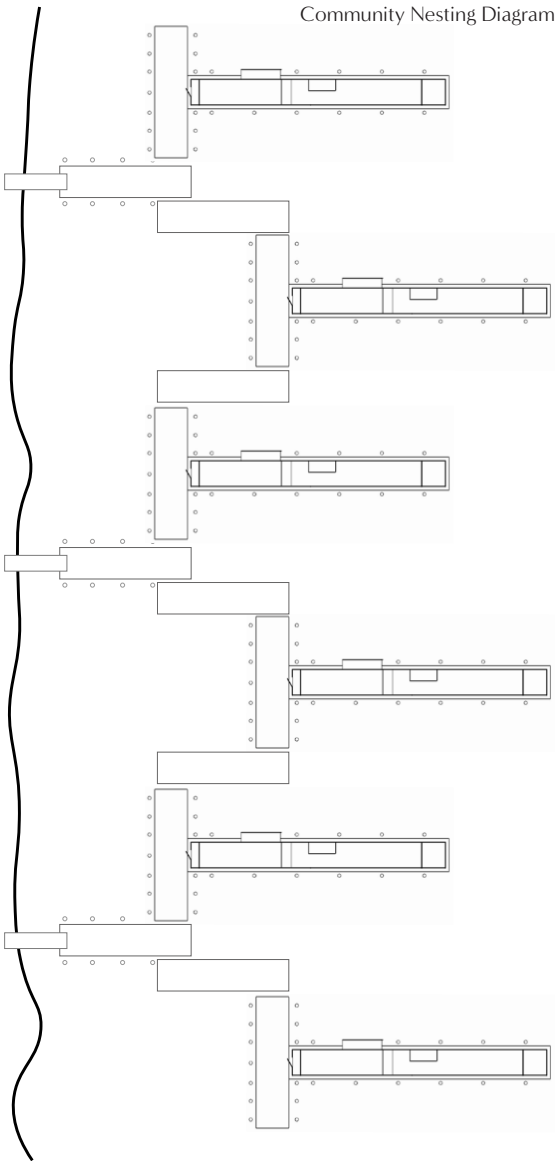


THE VESSEL

This home consists of three shipping containers and two Flexifloat platforms. The house is able to fit a full kitchen, dining room, lounge, two bedrooms, two bathrooms, and two outdoor deck within its compact quarters. Linear windows are repeated often to allow excess natural lighting while keeping the integrity of the structure. The house is also run on solar power.









MONO SABIO

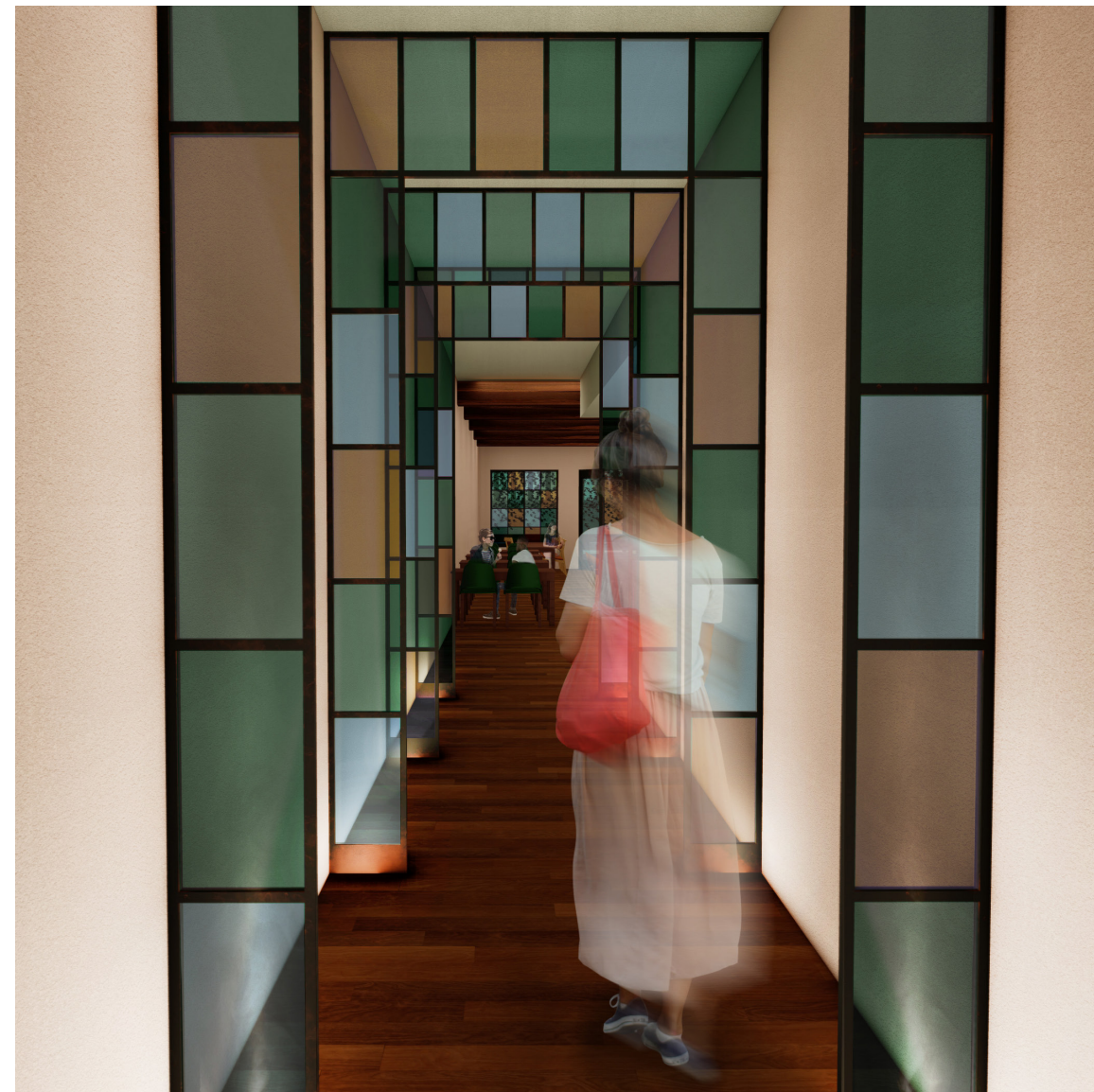
Advisor - Salvatore Raffone
Partners - Amanda East , Amelia Onishi

This group restaurant design is inspired by the artistic expression of Frida Kahlo. The space pushes the boundaries of “Beauty” in an interior, while creating a fun and intimate eatery in the heart of Downtown Brooklyn. The interior is filled with quirky materials and rich colors, that invite guests to explore the different niche spaces nested throughout. The main feature is the two story stairwell that is clad in back-lit resin panels. The panels are filled with flowers and fruits and then it transitions to being filled with quirky “tchotchke’s” embracing the true narrative behind Frida Kahlo’s work.



DINING

The first floor of Mono Sabio has a light color palette, that allows for a more comfortable and serene dining experience. Low lighting, and the use of stained glass, gives the occupant a sense of intimacy. The kitchen was designed to be open to the patrons through the tapas bar. This gives a more inclusive adventure for the diners to participate with.





DRINKING

The illuminated stairwell, encased in object-infilled resin panels, invites guests downstairs to the bar and lounge. This space was designed to mimic the experience of a speakeasy. A large sectional welcomes guests with low lighting that frames the walls. The bar is clad in the resin panels, and also has space for standing tables, set to different standard table heights.





PASHCHIM HOSTEL

Advisor Robert Nassar

Partners - Amelia Onishi , Allison Piccone , Yifan Hu , Peter Na

This group hostel design in Kathmandu, Nepal, was curated to honor the idea of perseverance of the two remaining towers on site, and to preserve the architecture of the building on the exterior and embrace it in the interior. The third floor is serene and muted, allowing visitors to relax and focus on their well-being. The fourth floor is where the communal spaces are primarily held, including the kitchen, dining room, and library. This floor embraces more traditional colors and is more saturated. The space is designed to bring people together and invite them to share their stories to one another.

3RD FLOOR PLAN



4TH FLOOR PLAN



3RD FLOOR ELEVATIONS



4TH FLOOR ELEVATIONS



SECTIONS





WELLNESS

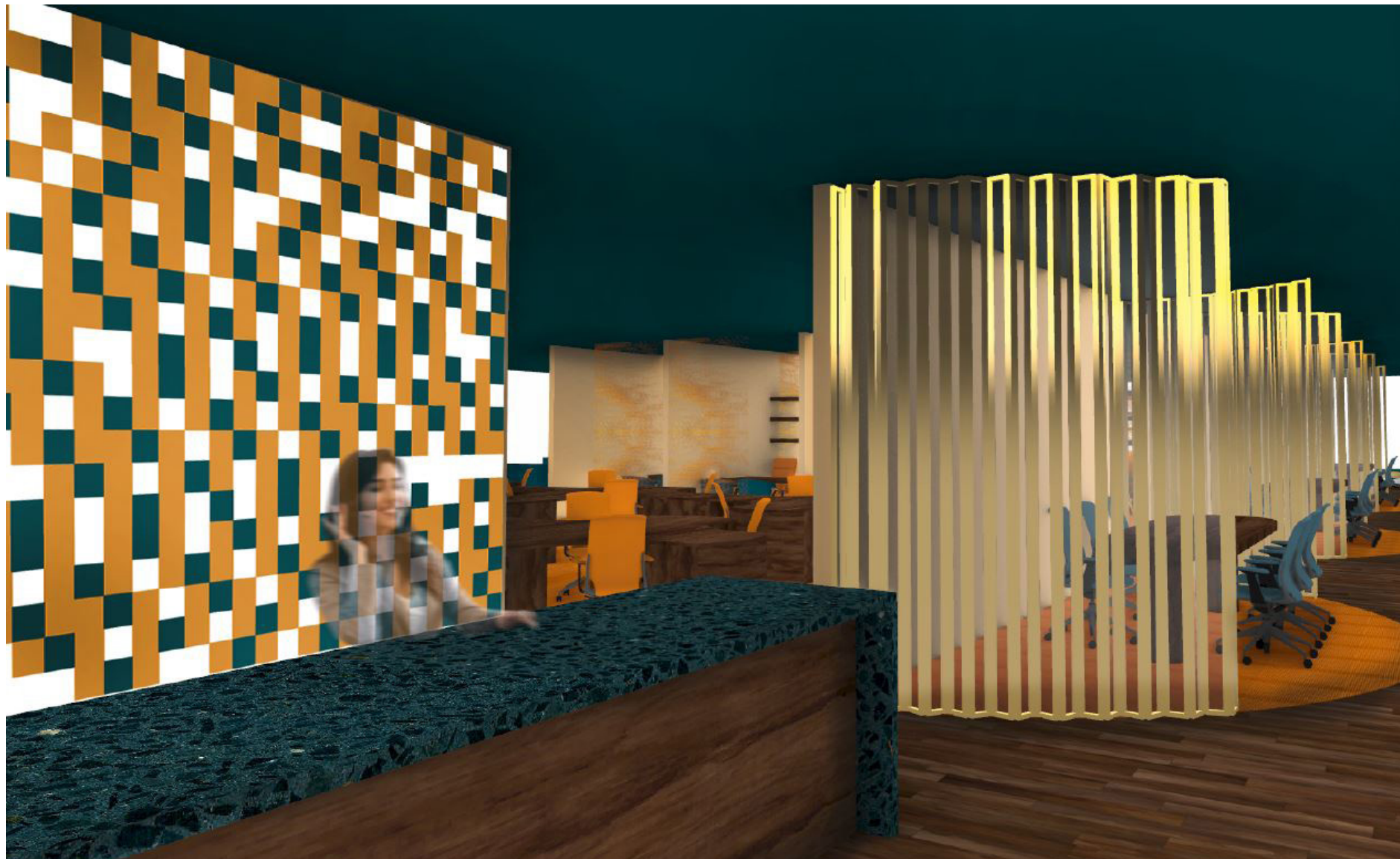
The third floor is designed to help the occupant decompress from travel. This is where the bedrooms, bathrooms, spa and reception are located. The beds are designed to allow for privacy in a shared space, while still letting occupants open the partitions for conversation. The architecture on this level has embraced a staggered motif that is translated in the circulation.



COMMUNITY

The fourth floor is designed to be a gathering space, allowing for all occupants to share stories and knowledge. This palette is more saturated and culturally adapted. The floor consists of a library, kitchen, dining areas, lounges, and outdoor spaces. The space is mostly open, encouraging guests to interact with each other. The center hold a large communal table, accessible to all.





UNITED NATION OFFICE SPACE

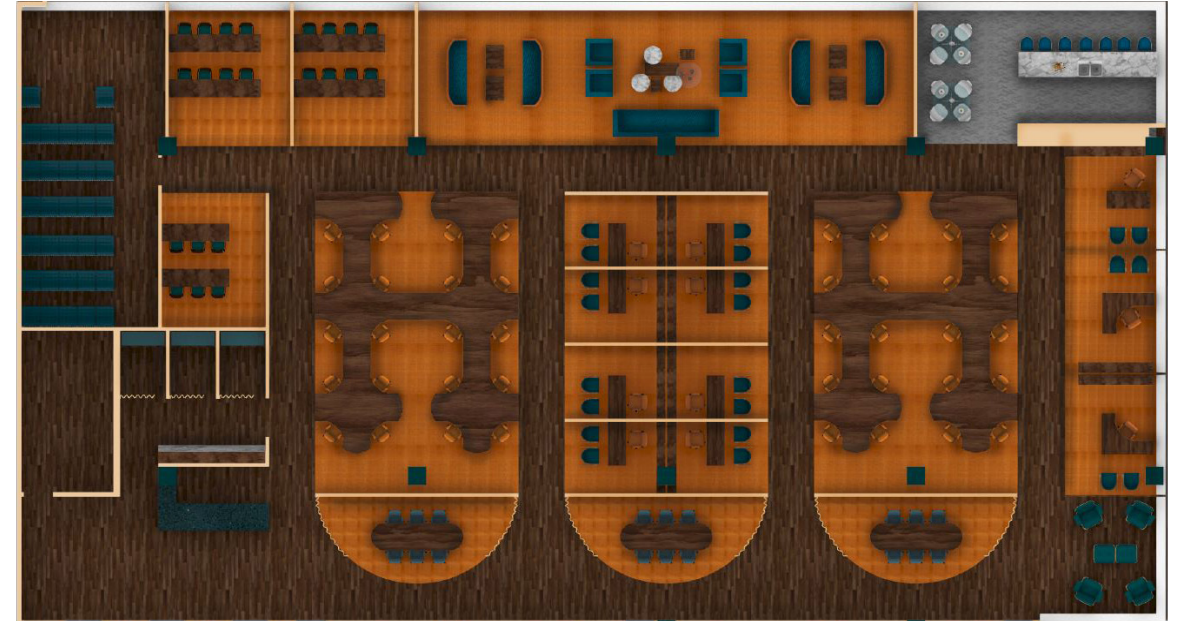
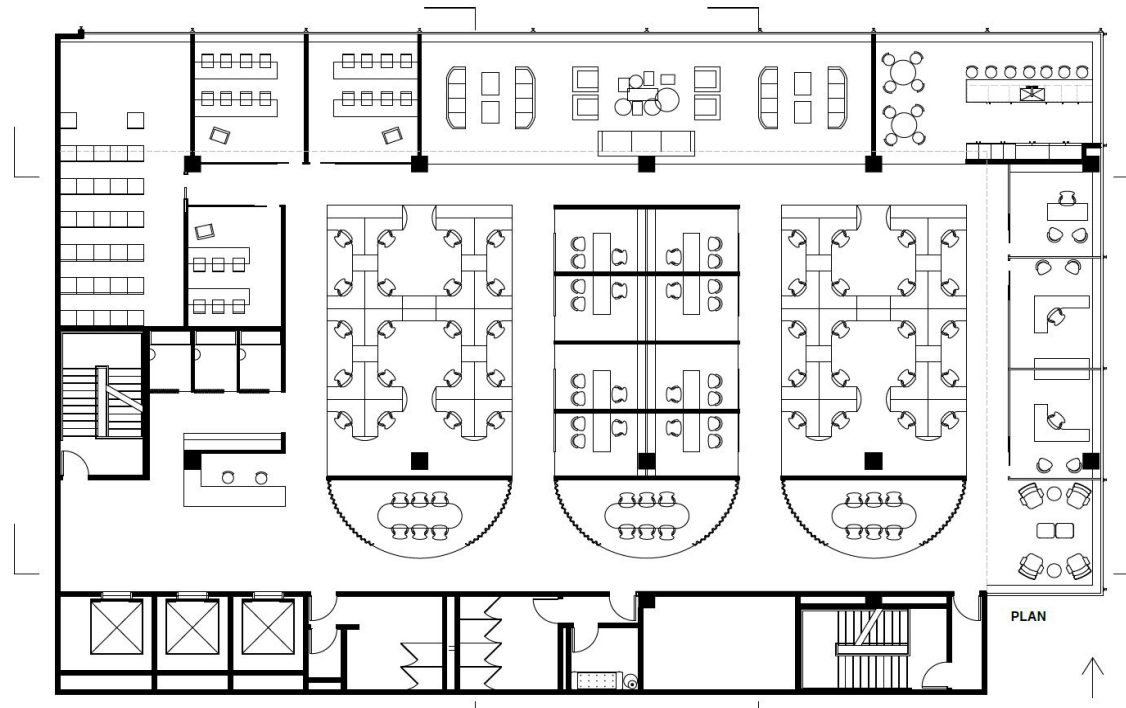
Advisor Robert Nassar

This office space is designed to encourage collaboration between departments of the U.N. Division for Inclusive Social Development. Using traditional geometries and unique methods of materiality, the space will feel enticing and seductive. Referencing design attributes from the 1950's, mixed with more modern aesthetics, the office will exude sophistication, color, and integration. The office uses a deep toned palette to allow the occupants to feel secure and comfortable as they focus their efforts to the work at hand.



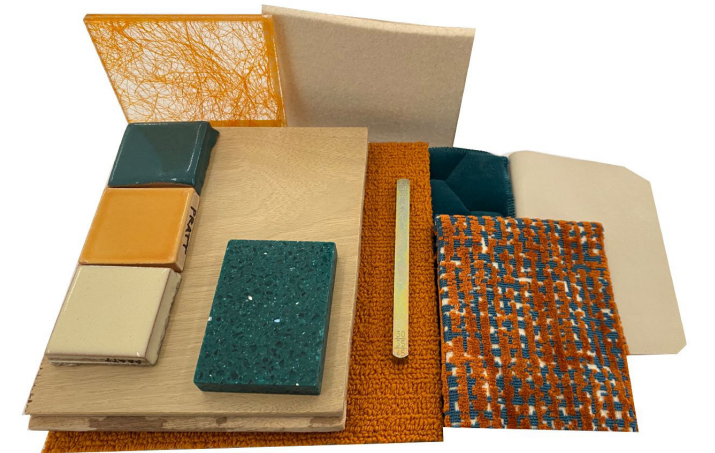
SPACE PLANNING

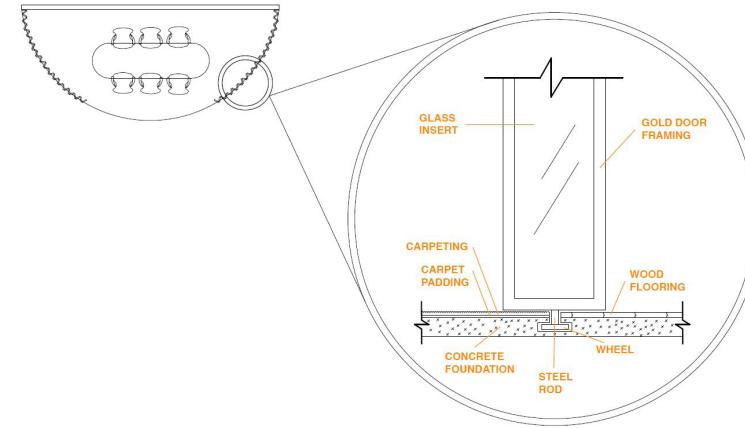
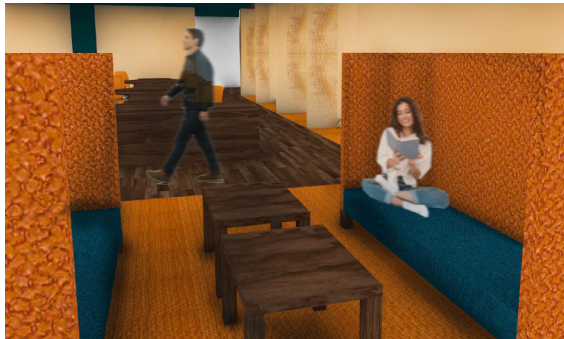
The space is a large square, which led to dividing the area with a grid. The small offices on the south side are curved, allowing for a less rigid circulation. The communal spaces are against the glass wall, allowing for maximum natural light. These spaces have limited partitions, which allows for light to carry throughout the space.



MATERIALITY

The office has two walls of glazing that brings in an exceptional amount of light. This allows for flexibility in the tones of the materials being used. The design is primarily finished in Teal and Orange, reminiscent of 1950's color palette's. Glass, with orange netting inset into it, is used as a sound-resistant partition for the executive offices. Brass is the primary metallic finish throughout.





PRIVACY SCREEN

Refrencing design from the 1950's, the design includes privacy screens in communal conference rooms. The screens are a brass finished security folding door system. This allows for a lightweight, moveable, partition that is also see through with glass inserts. It is also used for the private phone booths.

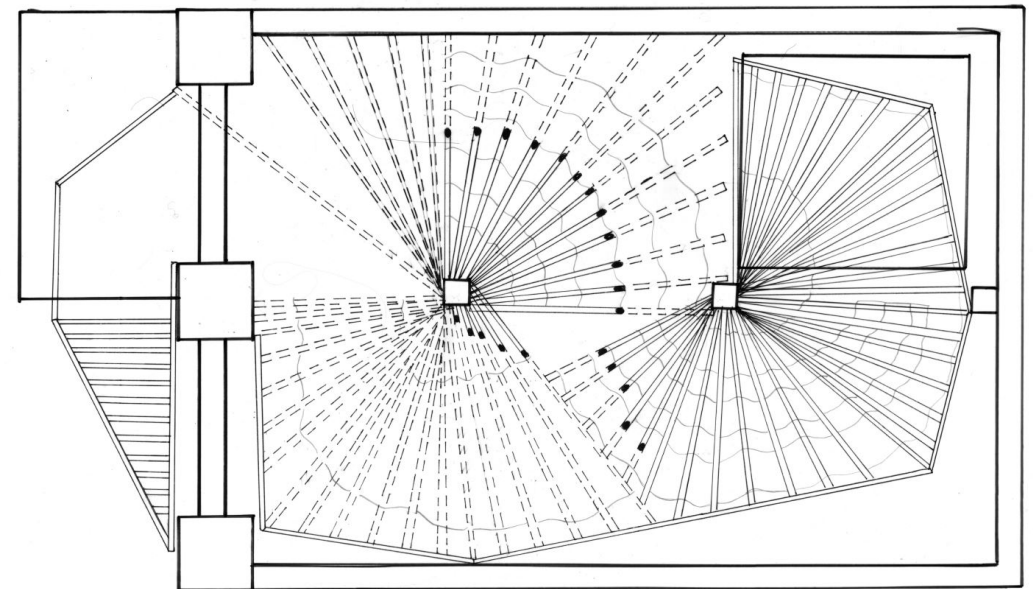
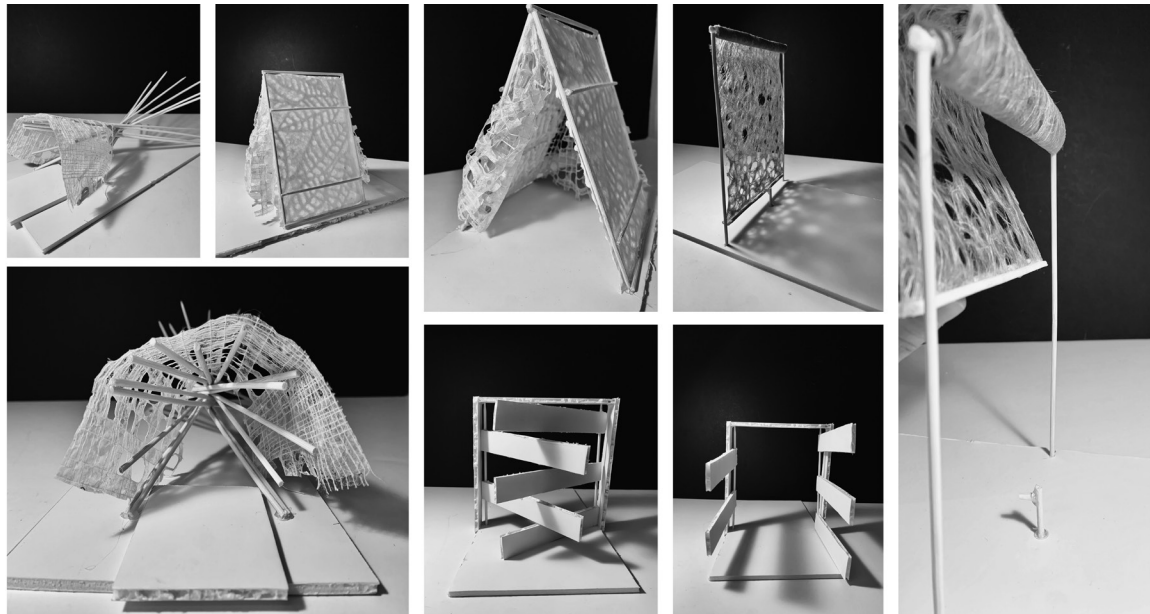
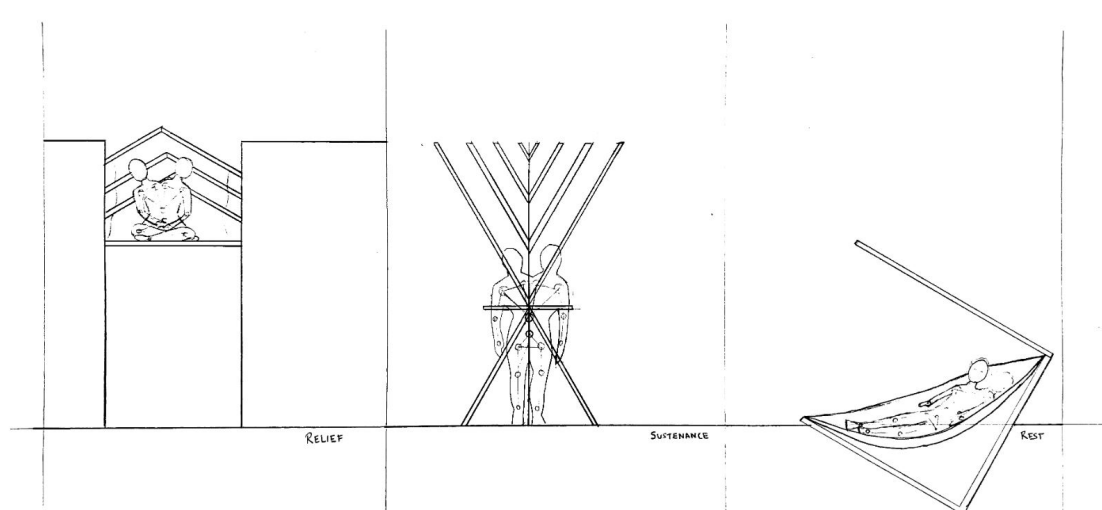


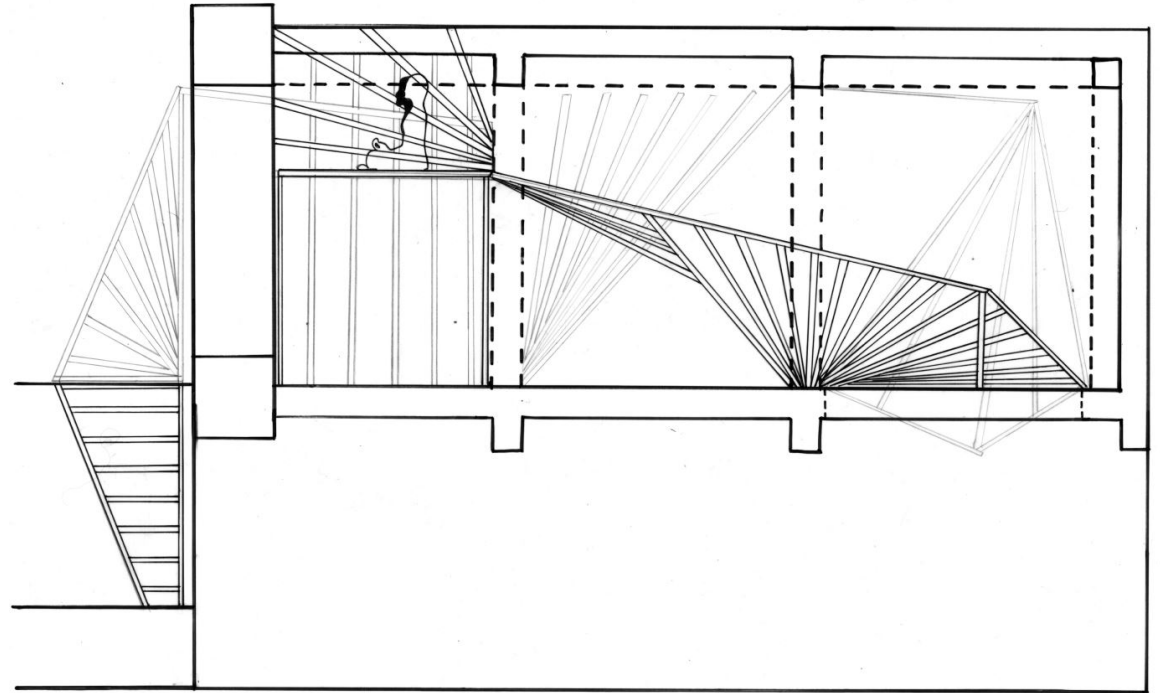


VOLUTION

Advisor Loukia Tsafoulia

Volution is a habitat set in a dystopic future, where technology controls the entire environment. The house was designed to be a space of relief from the stimulating world surrounding the occupants. The space is made of two separate spirals, that form around the existing central structural columns. Using a series of thin beams to create the fan forms, the occupant can easily maneuver fluently throughout the home. The columns then have a series of different fabrics woven through them to create multiple levels of comfort to help the occupant transition from the stimulating environment to a peaceful one.







Artistic Explorations

Self Guided

This collection of work includes projects in Textile Design, Pattern Making, and Production Design.

