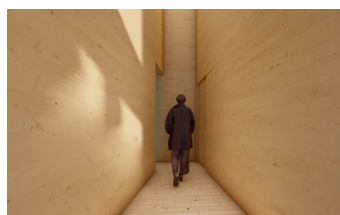




ORCHESTRATED INTERSTICE

Advisor Annie Kwon

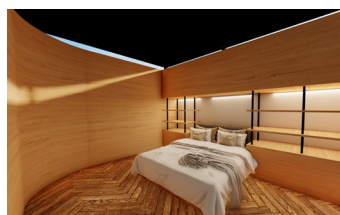
This project is a reaction to the overexposure encountered in an idyllic suburban community. This performative study will analyze the relationship between the community and the occupants. The interior will create a series of visual thresholds that expose the users while they interact within the spaces. This project will use specific design interventions derived from different decades of suburban design, that will help pull the users out of the typical suburban landscape, and immerse them in a malformed reality.



COURTYARD WATER HOUSE

Advisor David Ling

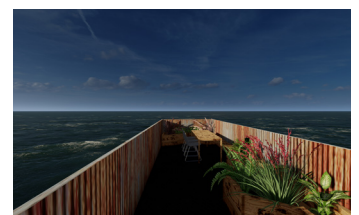
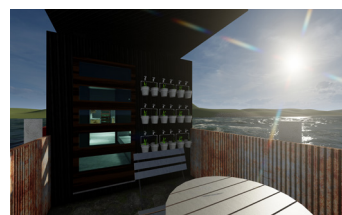
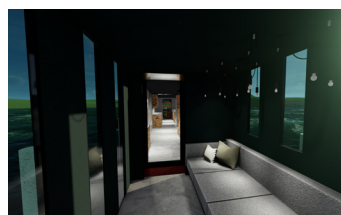
This high-end design has a large focus on sustainability, without the loss of space. Three scales of farming have been seamlessly integrated into the design, including herb farming in the landscaping and a greenhouse off of the kitchen. Open concept space planning allowed for a central courtyard and gives a distinct separation between public and private space. The house is an entertainment hub with multiple levels of lounge areas, a screening room, outdoor dining table, and rooftop deck with produce and solar farming.



LINEAR WATER HOUSE

Advisor David Ling

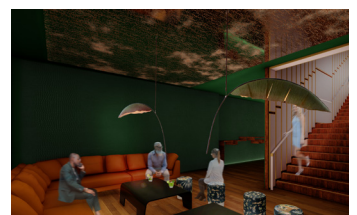
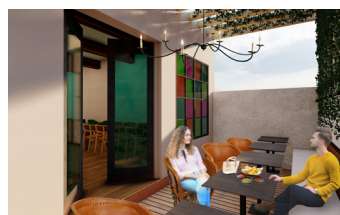
This project reuses shipping containers to create a modular home accessible for low-income housing. Sustainability is a key factor in the design by adding three scales of farming within the confines of the house. The linear home fits a family of four, and has enough space for two bedrooms, two bathrooms, and a complete living area. There are also two outdoor spaces that help the occupant with both produce and solar farming. The home was designed to be repeated in a nested configuration for housing development.



MONO SABIO

Advisor Salvatore Raffone

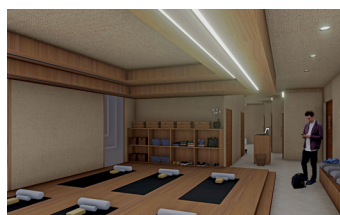
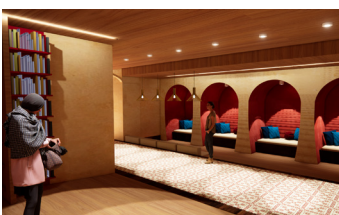
This group restaurant design is inspired by the artistic expression of Frida Kahlo. The space pushes the boundaries of “Beauty” in an interior, while creating a fun and intimate eatery in the heart of Downtown Brooklyn. The interior is filled with quirky materials and rich colors, that invite guests to explore the different niche spaces nested throughout. The main feature is the two story stairwell that is clad in back-lit resin panels. The panels are filled with flowers and fruits and then it transitions to being filled with quirky “tchotchke’s” embracing the true narrative behind Frida Kahlo’s work.



PASHCHIM HOSTEL

Advisor Robert Nassar

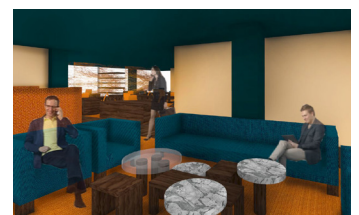
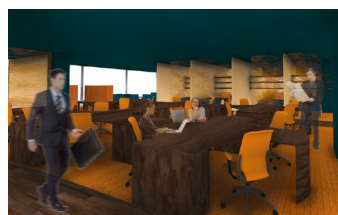
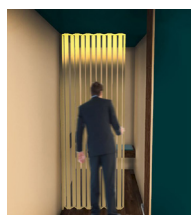
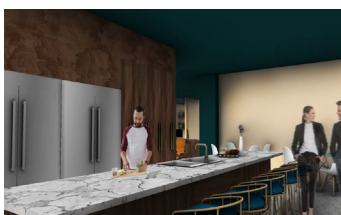
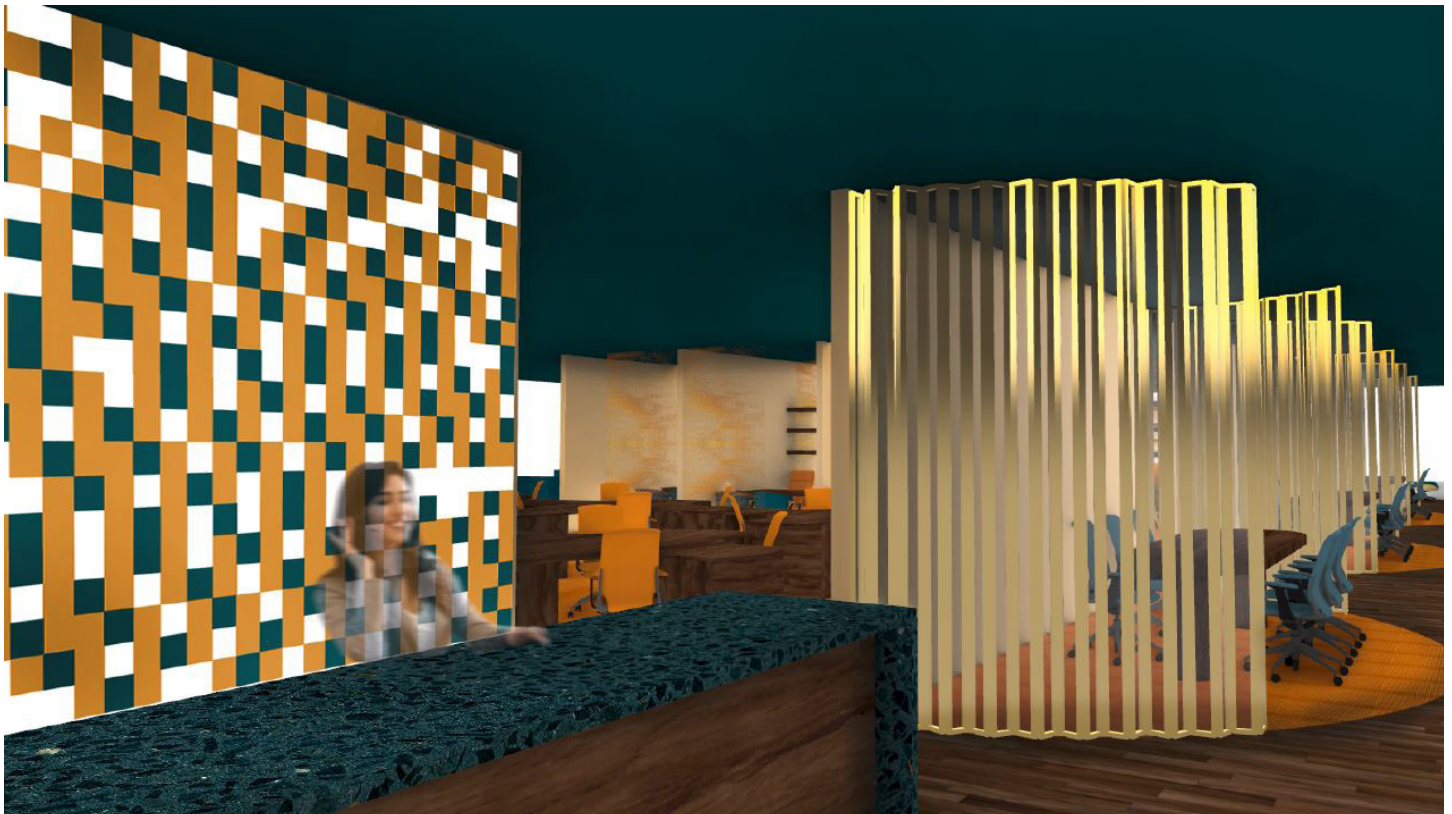
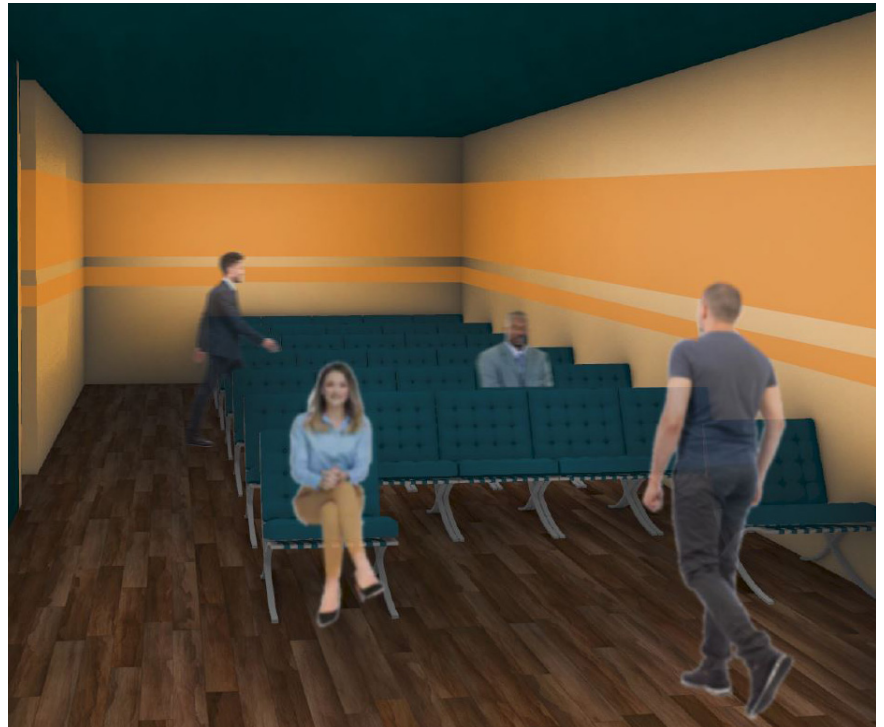
This group hostel design in Kathmandu, Nepal, was curated to honor the idea of perseverance of the two remaining towers on site, and to preserve the architecture of the building on the exterior and embrace it in the interior. The third floor is serene and muted, allowing visitors to relax and focus on their well-being. The fourth floor is where the communal spaces are primarily held, including the kitchen, dining room, and library. This floor embraces more traditional colors and is more saturated. The space is designed to bring people together and invite them to share their stories to one another.



UNITED NATION OFFICE SPACE

Advisor Robert Nassar

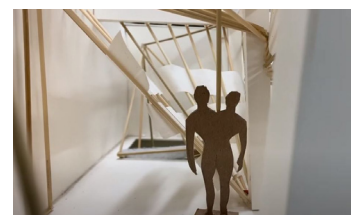
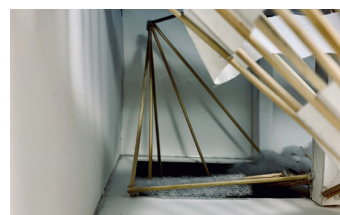
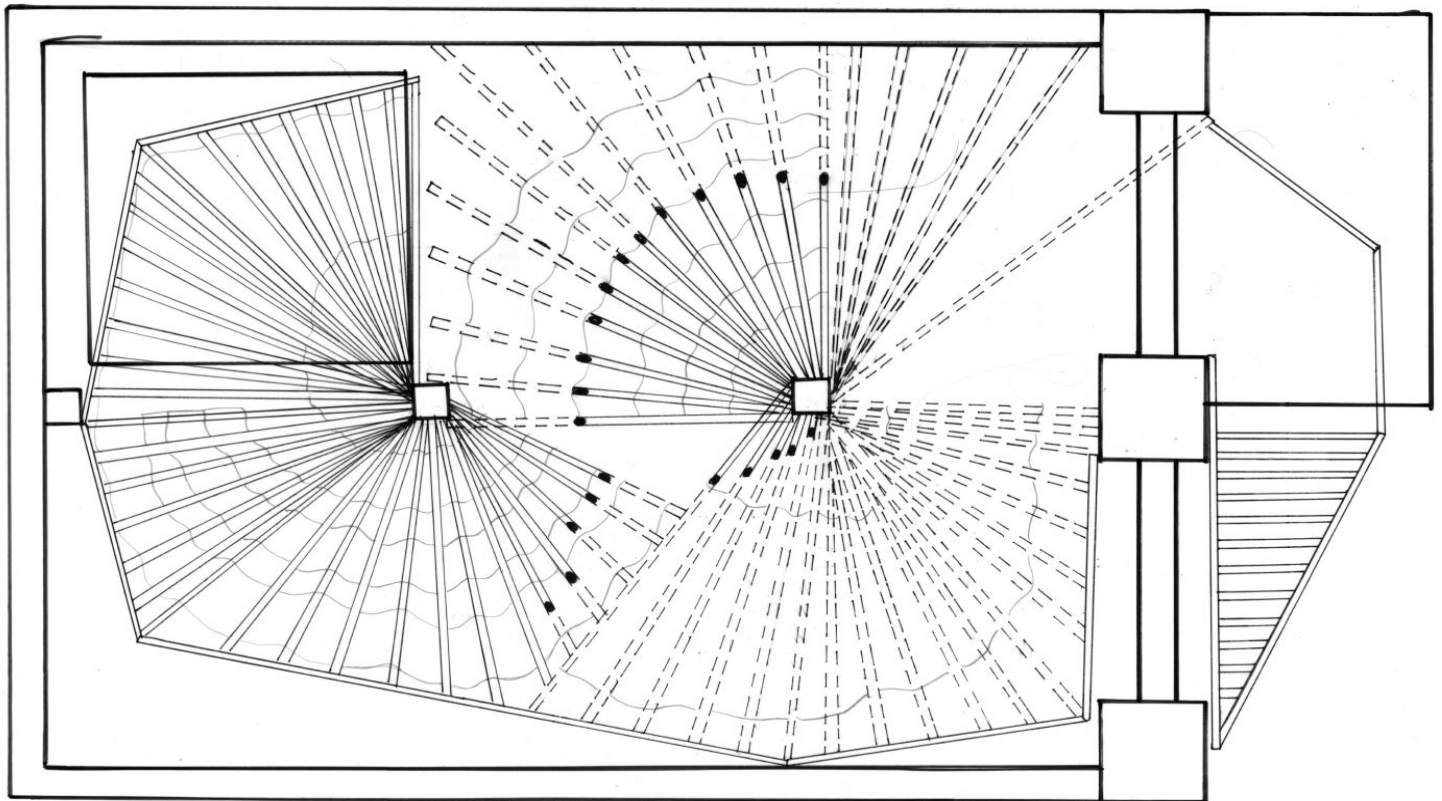
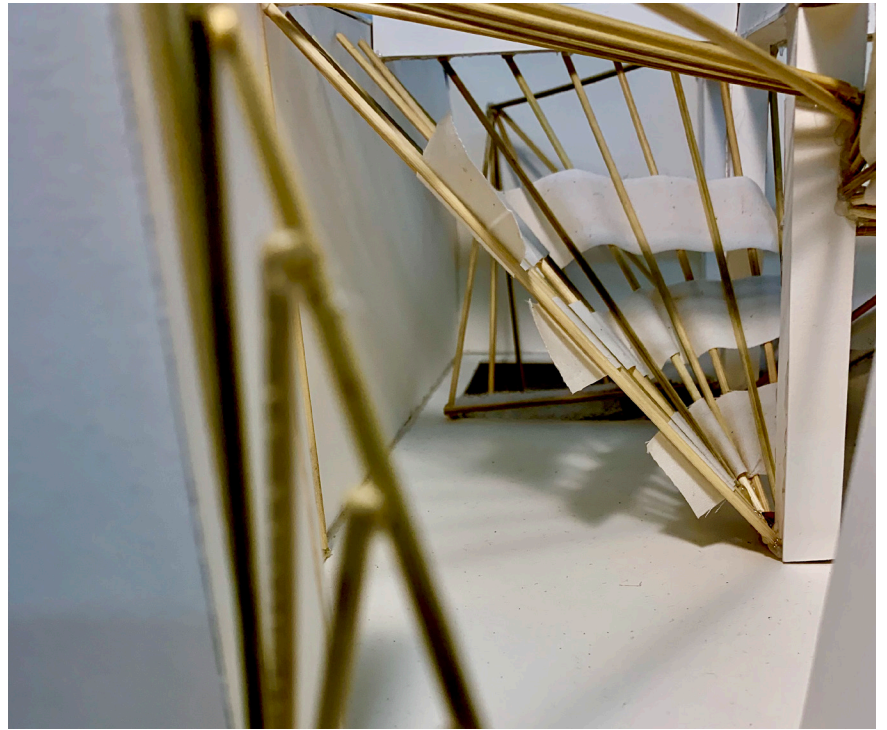
This office space is designed to encourage collaboration between departments of the U.N. Division for Inclusive Social Development. Using traditional geometries and unique methods of materiality, the space will feel enticing and seductive. Referencing design attributes from the 1950's, mixed with more modern aesthetics, the office will exude sophistication, color, and integration. The office uses a deep toned palette to allow the occupants to feel secure and comfortable as they focus their efforts to the work at hand.



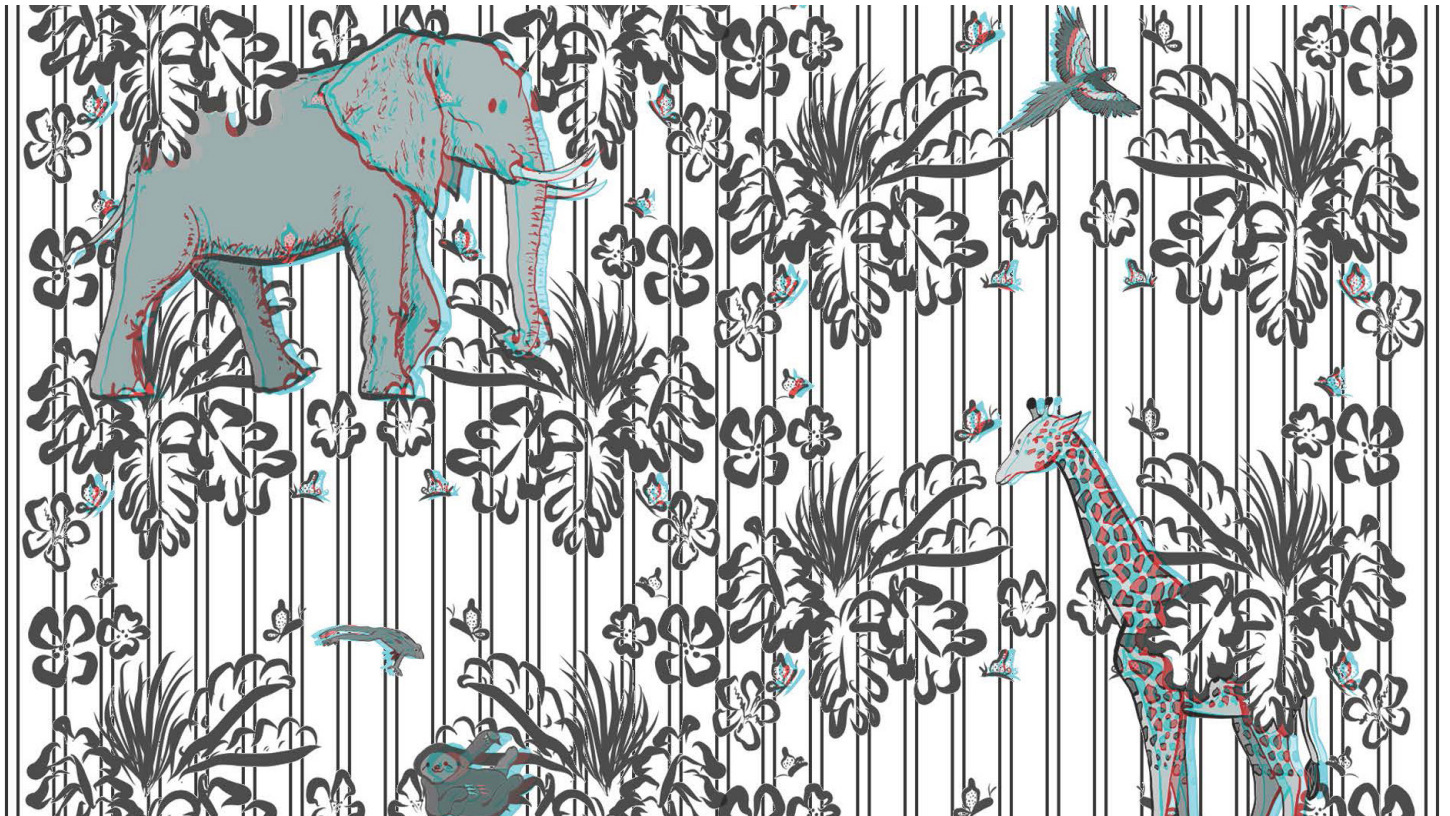
VOLUTION

Advisor Loukia Tsafoulia

Volution is a habitat set in a dystopic future, where technology controls the entire environment. The house was designed to be a space of relief from the stimulating world surrounding the occupants. The space is made of two separate spirals, that form around the existing central structural columns. Using a series of thin beams to create the fan forms, the occupant can easily maneuver fluently throughout the home. The columns then have a series of different fabrics woven through them to create multiple levels of comfort to help the occupant transition from the stimulating environment to a peaceful one.



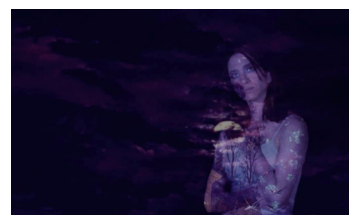
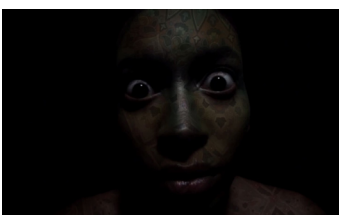
TEXTILES AND PATTERNS



ANTHONY MIKSAD

PRODUCTION DESIGN

Films Directed by Griffin Kaiser



anthonymiksad.com

484-553-2870

anthonymiksad@gmail.com