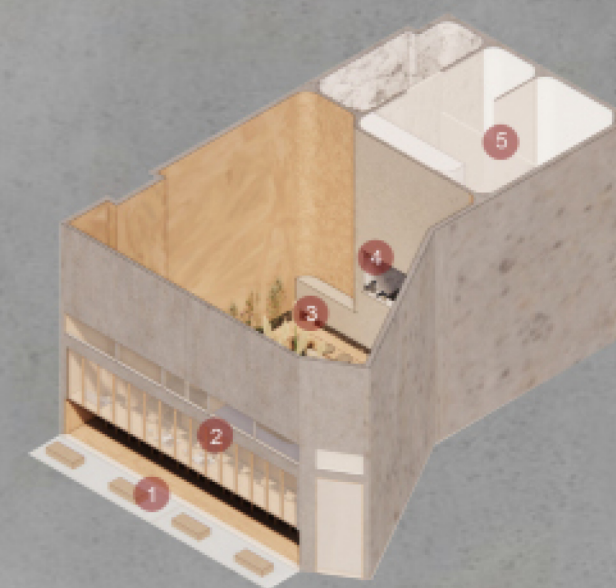


HYPER LOCAL INTERVENTION

The project is questioning how to rebuild the local interactive space for people who live in my neighbours in a different perspective. The study aims to create a public local community by re-examine the relationship between the private and public. The exploration will achieve the concept by a strategy of dominating a part of citizens private space to the public to benefit the host and neighbours at the same time.



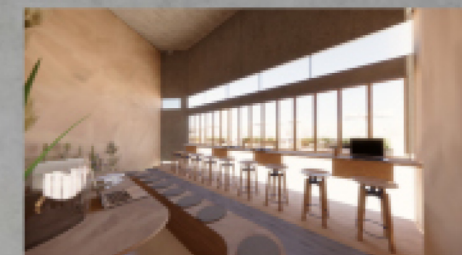
1 The gaps allow children to enter

3 The main seating area



2 Stool area

5 Blinds



4 Coffee making area

5 Sleeping area

