

FIRE+ CHARCOAL CAFE 03



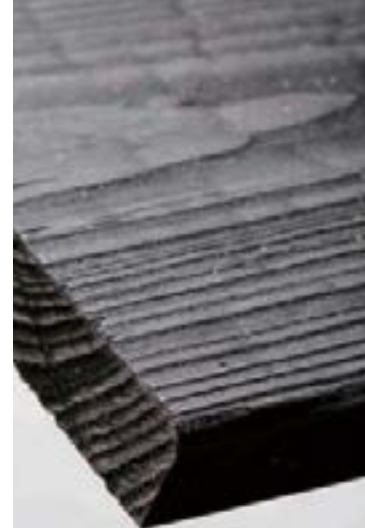
PROJECT BRIEF

Set up a cafe under Aspen Mountain to provide a resting place for skiers.

DESIGN STRATEGY

Starting from the local cold environment and the needs of skiers, stoves are set up indoors and outdoors to allow users to resist the cold. The colors are inspired by warm-toned paintings, Snow Effect on the Street in Argenteuil. Outdoor landscape stones can protect the privacy of users, allowing them to enjoy the scenery and feel safe.

MATERIAL RESEARCH - SHOU SUGI BAN



Colorfastness
Fire resistance
Stain Resistance
Water Resistance

Rational

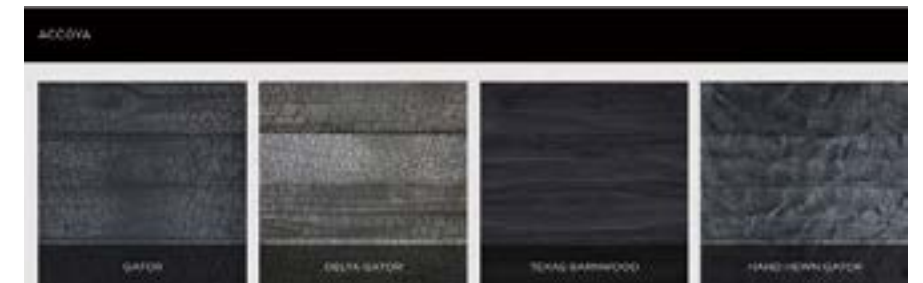
-Mode of perception: Surface mode and volume mode -This wood has the characteristics of fire resistance, anti-corrosion and insect resistance, so it can be used as a building material for the furnace inside the house. The whole material is made of fired, which gives a warm feeling in the cold weather.

Procurement

- Lumber is cut from Douglas fir and oak trees located in the Netherlands. Processing in Japanese cities including including Naoshima, Tonosho, Shodoshima, Takamatsu and Sakaide. Purchased by European companies, and mainly available in the US -Delta, a European company, is the local representative for Shou Sugi Ban. -Standard thickness is 0.8" and minimum width is 7". -The cost of Shou Sugi Ban is about \$8 per minimum standard, and the installation cost is \$15/sf.

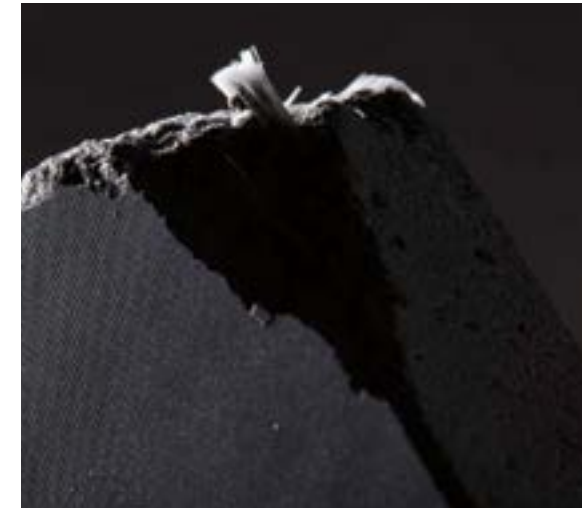
Installation Methods

-The wood can be used for cladding, siding, fences and furniture, in interior and exterior applications.
-Mainly installed on the wall or on the floor.





Fire resistance
Impact Resistance
Stain Resistance
UV Resistance
Frost resistant



DINAMIC.CCC

Rational

- Mode of perception: Surface mode
- This material has a strong hardness and sound protection, so it can be used to build the exterior of the cafe. Good sound protection ensures that the cafe shop's environment does not cause an avalanche.

Procurement

- Using a combination of fine cement and glass fiber in chopped fiber, continuous roving, and fiber mesh, the sheets are created in continuous forms. This technology is mainly used in Dinamic.ccc

which is located in Netherlands, so the materials are mainly purchased on the company's website.

- Dinamic.ccc is the local representative.

- Max 1.250 x 3.600 mm, Minimum thickness is 10mm

Installation Methods

- Applications are for exterior cladding of residential, commercial, and institutional buildings.

- No structural support needed,

- The material properties of GRC depend on the production method. The DinamiC•CCC panels are made by using the patented automated continuous process technique.

With this process it is possible to combine the patented matrix with a special reinforcement composition. Herewith a mixture of fibres is applied consisting of chopped fibres, continuous endless "rovings" and fibre mesh. This so called "cocktail-technology" is especially developed for the DinamiC•CCC products.

MATERIAL SCHEMES COMPARISON

Scheme A

Olfactory: Earth, Rose, Vanilla

Haptic: Oil

Gustatory: Chocolate pudding,
Avocado, Beef Gravy

Visual: Oil paintings: Vermeer,
Jean August Dominique Ingre

Auditory: Wagner, Beethoven,
Music in minor Key



Scheme B

Olfactory: Rain, Pine, Lemon
zest

Haptic: Sand paper

Gustatory: Lime Sorbet,
Cucumber, Sauerkraut

Visual: Watercolor Paintings:
Charles Demuth, John Singer
Sargent

Auditory: Mozart, Vivaldi,
Music in major Key



MATERIAL PROPOSALS & FURNITURE SELECTIONS



1 Antique Heart Pine, Interior Furniture
 2 Flat Cut Teak, Exterior Furniture
 3 Siwer Travertine, Exterior Floor
 4 Chiseled Finish, Stone, Interior Wall
 5 Pietra Dorata, Stone, Interior Wall
 6 Heart Pine, Interior Floor
 7 Wool Carpet, Interior Floor

8 leather, Brown, Furniture Cushion
 9 Fabric, Vinyl 83%, Polyester 17%, Furniture Cushion
 10 Pattern: Zenith, Color: Honey, Curtain
 11 Heath Ceramics, Restroom Wall
 12 Handmade Ceramic Tile, Restroom Wall
 13 L'antic Colonial, Restroom Wall



CLIENT PROFILE AND SITE INFRO

INTERIOR:

| | |
|-----------------------|-------|
| Reception / Host | 1 |
| Bar / Counter Service | 1 |
| Mail / Deliver | 1 |
| Pantry / Kitchen | 1 |
| Powder Room | 1-2 |
| Server Station | 1-2 |
| Storage | 1-2 |
| Seating | 25-35 |

COVERED TERRACE:
Lounge Seating
Cocktail Tables
Planter
Sculpture

LOWER TERRACE:
Lounge Seating
Sculpture
Planter



OWNER: Ms. Brown
Gender: Female
Age: 45
Personality: nice and helpful
Hobbies: skiing and photography

Ms. Brown graduated from Pratt Institute and went back to her hometown, Aspen. When she was a child, she dreamed of having a cafe on the Aspen Mountain for people to have a rest and enjoy the beautiful view of the mountain so she opened this cafe when she got back.

USER GROUP:
People visiting Aspen and local people as well



POSITION OF CAFE

CONCEPT COLLAGE

After-ski activities

Snow Mountain is closed at 4 pm. People will carry out various activities after the snow is over. There are many different kinds of restaurants under the snowy mountains, such as American, Italian, Japanese, etc. People will go to these restaurants to eat. The restaurant on the top of the hill will continue to open until 10:00 pm after the snow mountain is closed. Some people will choose to watch the sunset. Members of the Snow Mountain Club will hold various parties. Many people also decide to go to the coffee shop to rest. Some tourists from other places will want to stay in a hotel under the snowy mountains, while another part of the tourists will drive away. Snow Mountain is closed at 4 pm. People will carry out various activities after the snow is over. There are many different kinds of restaurants under the snowy mountains, such as American, Italian, Japanese, etc. Some people will choose to watch the sunset. Members of the Aspen Mountain Club will hold various parties. Many people also decide to go to the coffee shop to rest.

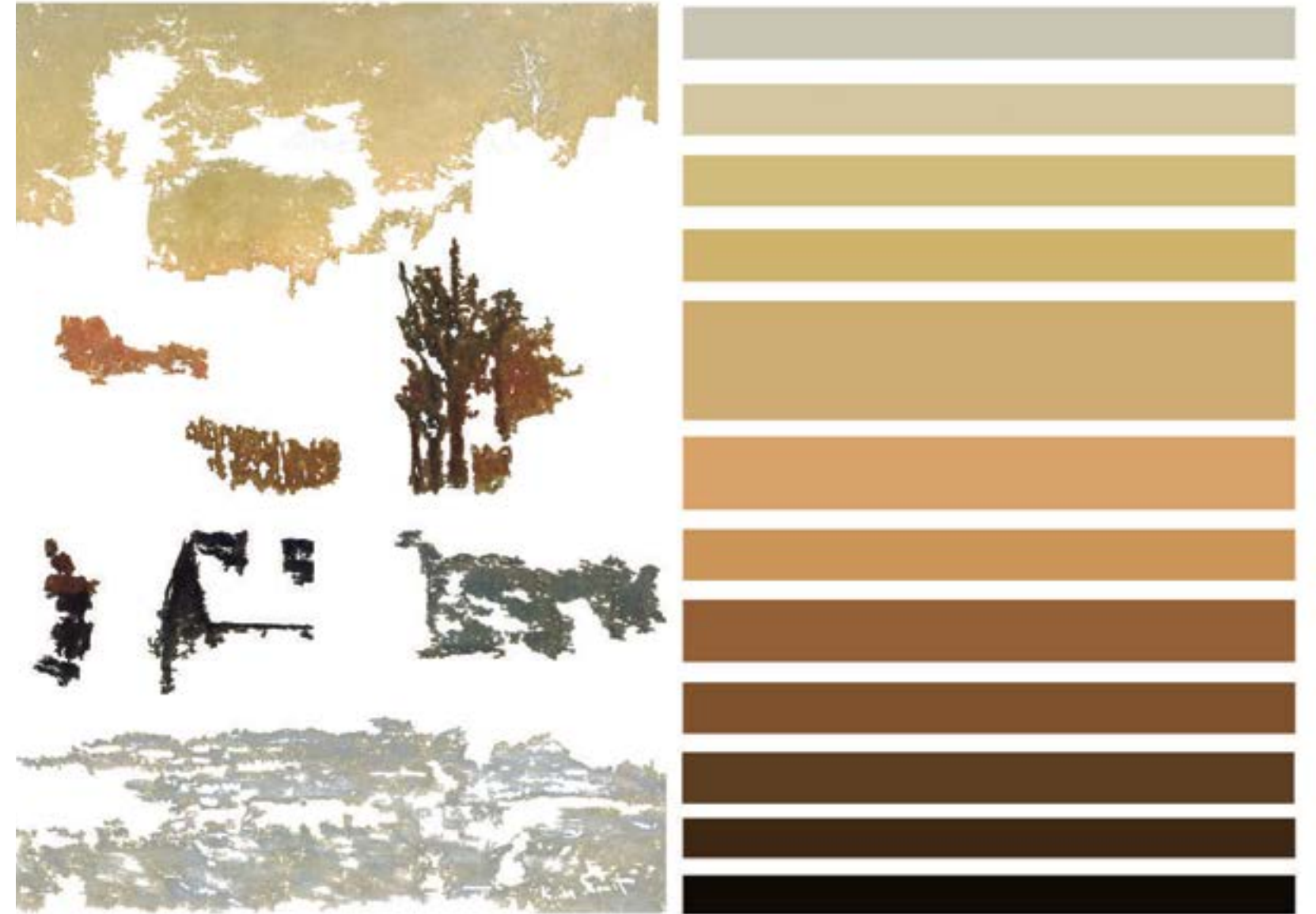


CONCEPT DEVELOPMENT- ARTWORK

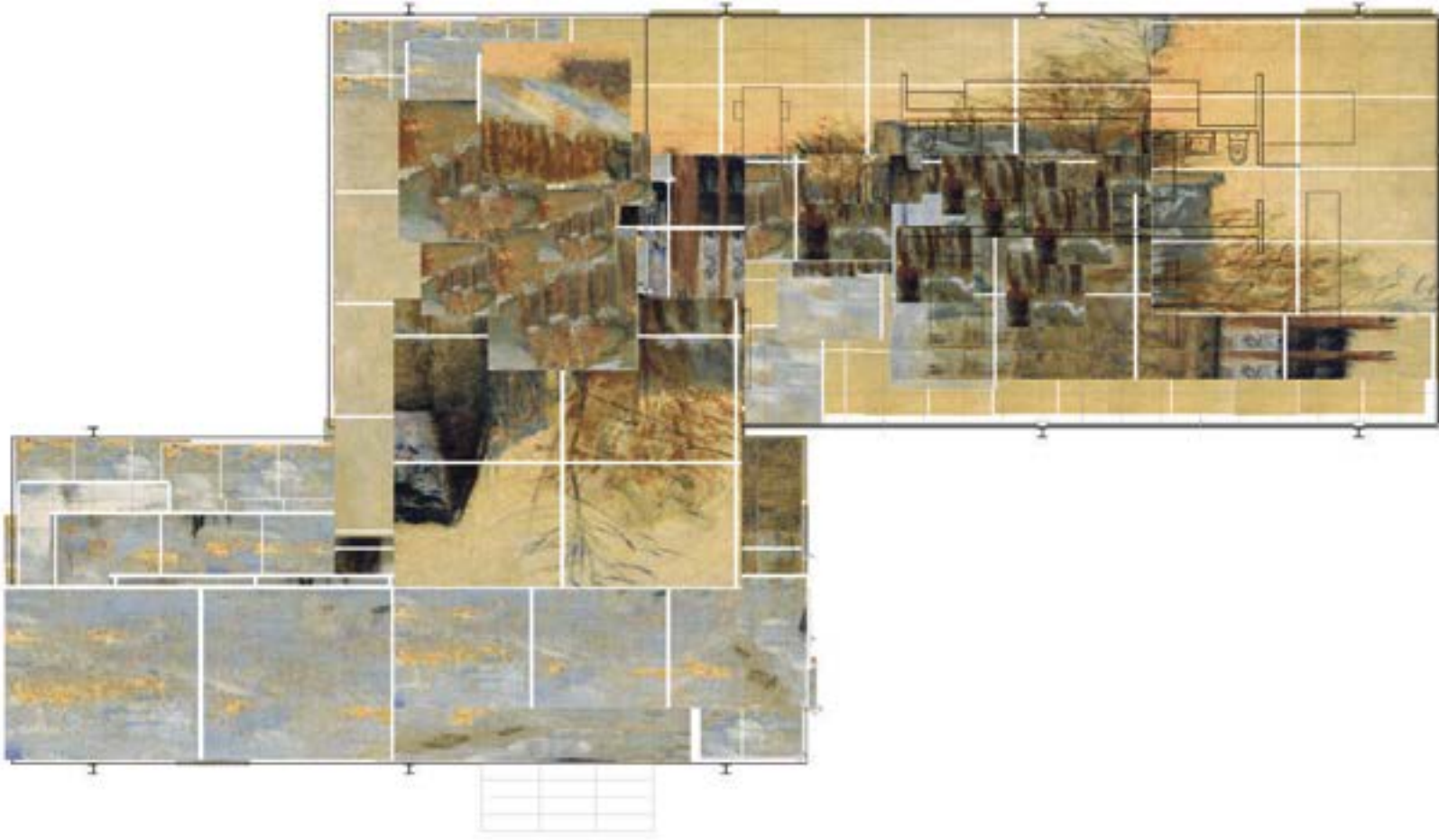


Snow Effect on the Street in Argenteuil, Claude Monet, 1872, Musee Marmottan

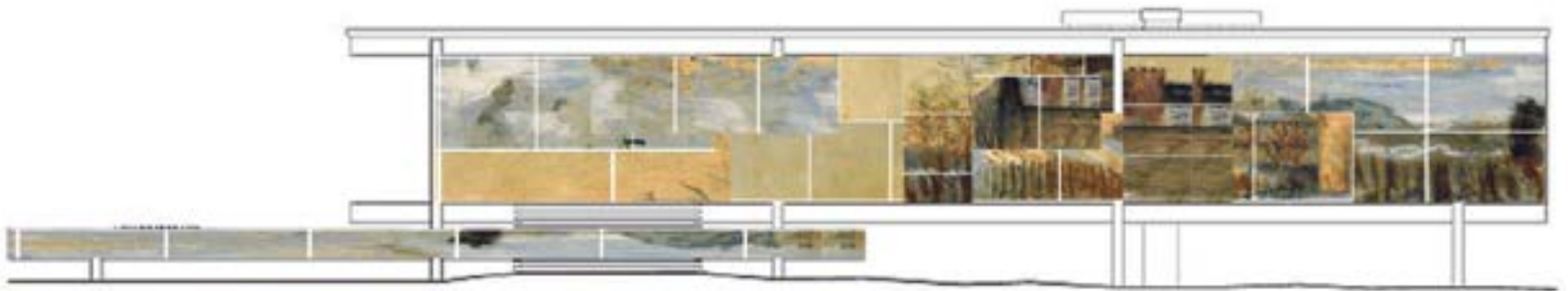
COLOR ANALYSIS



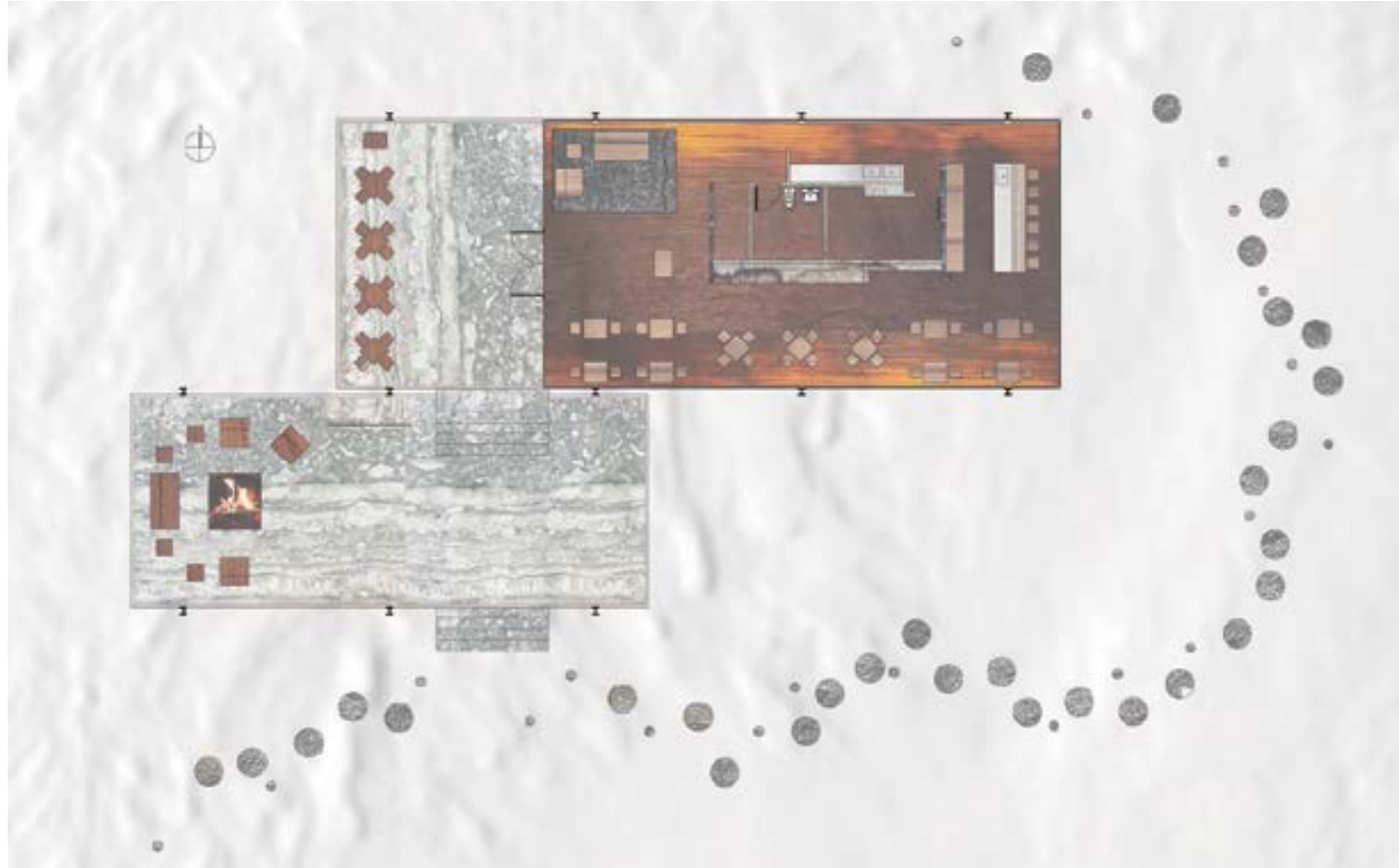
FLOOR PLAN COLLAGE



ELEVATION COLLAGE



RENDERED FURNITURE PLAN



RENDERED LIGHTING PLAN

