

## *Hyper Local Intervention*

The project will focus on how to de-emphasize the people's awareness of boundary in my home-city. The study aims to create a public community by re-examine the relationship between the private and the public.

The study discusses how to contributing a part of private space of FEW CAFE to share with the public while ensuring the living space of the owner.

### RESIDENCE

Rhino model

Rendering

Physical model test

2021



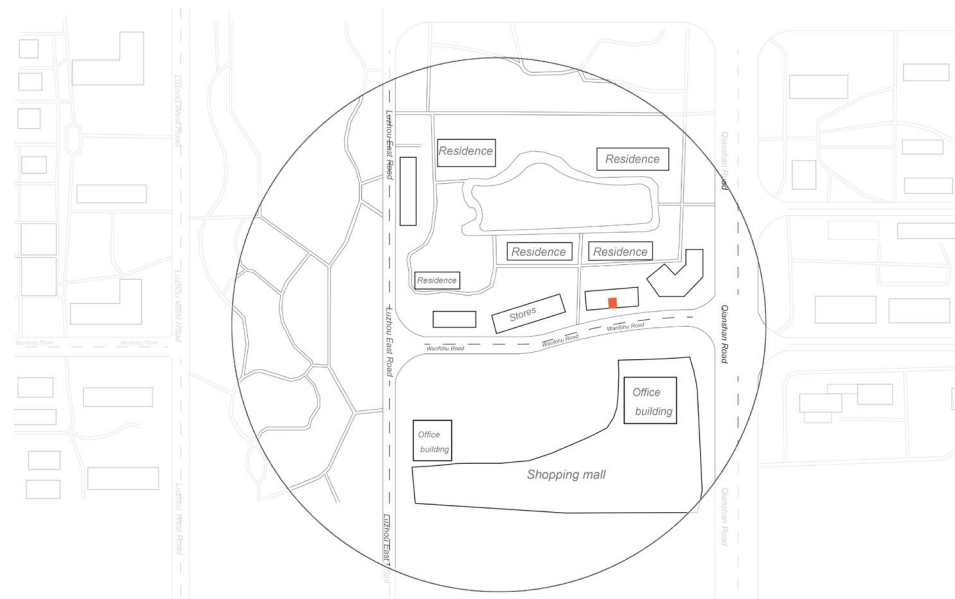
## MONTAGE

Site document

2021

The site is located in Hefei, China. The site locates in the very center of the new developed district in Hefei where gathers a large population in this area.

The montage is documenting the surrounding environemnts include the buildings, green belt and nearby facilities.



The site drawing is showing an overall view of the site and surrounding environments.

The drawing emphasizes the site and the nearby street, especially the surrounding residence, shopping malls and city park.

## SITE DRAWING

2D Drawing of the site  
Overall view of the site

2021



## ELEVATION

Site document

2021

The elevation mainly showing the detail construction of the site building, including the columns, the building structures and details on the second floor.

The drawing illustrates the different hierarchies from the front view of the site.



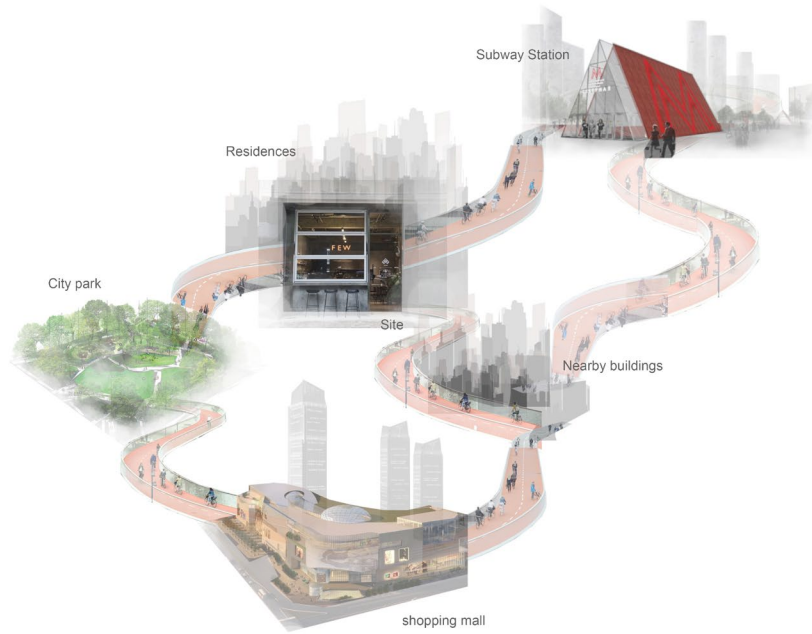
The section mainly shows the relationship between the site and the nearby constructions.

The section view includes the site, the seating area in front of the site, the shopping mall on the opposite side, the vegetations and all detail raised platforms.

## SECTION

Site relationship with nearby

2021



## SITE DIAGRAM

Site document

The site diagram is showing the relationship between the site and the nearby landmarks in a more visual strategy,

10min walk from City Park  
10min ride from Subway station  
5min walk from Shopping Mall

2021



The diagram1 (top) showing the exterior environment. Comparing to the skyscrapers on the back in the cool color. the colorful scenario that shows the installations and the pedestrians can tell the energy of the area in a more dramatic way.

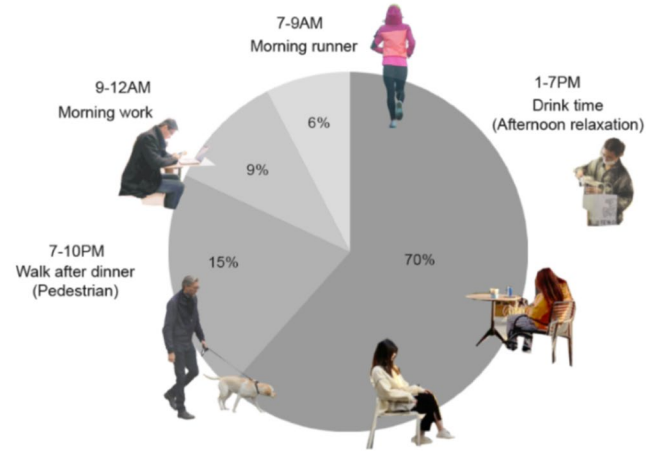
The diagram2 (bottom) illustrates the conceptual lifestyle the designer wants to create in this block.



## CITY PARK COLLAGE

Conceptual structure in city park

2021

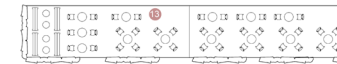
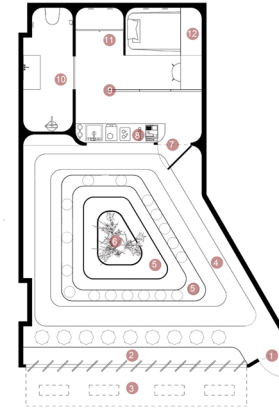


#### Age of neighbours:

50%	26—40
40%	16—25
5%	40+
3%	Children
2%	Puppy

#### Main recreational activities:

To work / To read	To chat
To drink	To walk the dog
To sit	To take photo



## PROGRAM RESEARCH

The pie chart  
documentation of programs

2021

The pie chart is showing all the  
program i collected from the local  
street. Observing all different types of  
people and their needs.

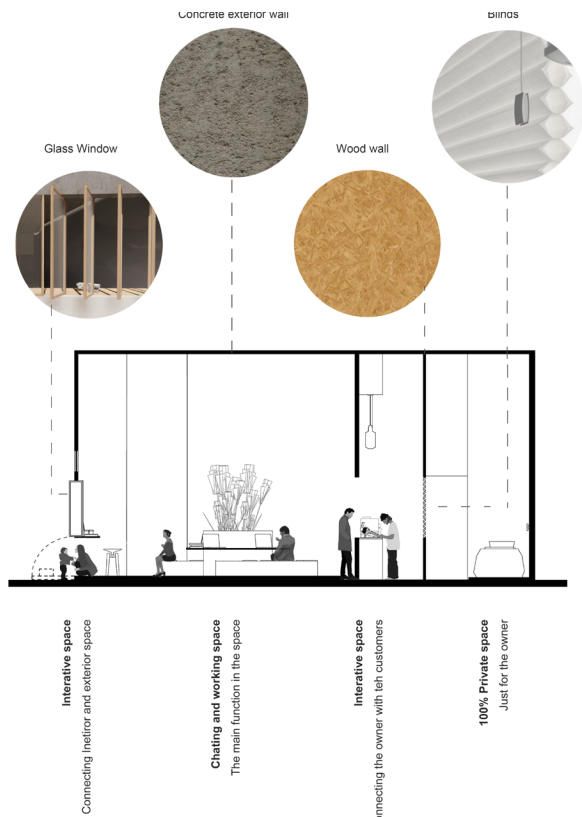
The research shows that the  
program the space needs are: to  
seat, to chat and to play.

1. Entrance
2. Seating area (facing toward)
3. Movable structure (Storefront)
4. Plank walking pathway
5. Customized working area
6. Green Space
7. Customized working area
8. Bedroom door
9. Coffee table (making and order)
10. Blinds
11. Bathroom
12. Storage
13. Bed and connecting
14. Outdoor seating area

## FLOOR PLAN

All the main program in the space  
AI drawing

2021



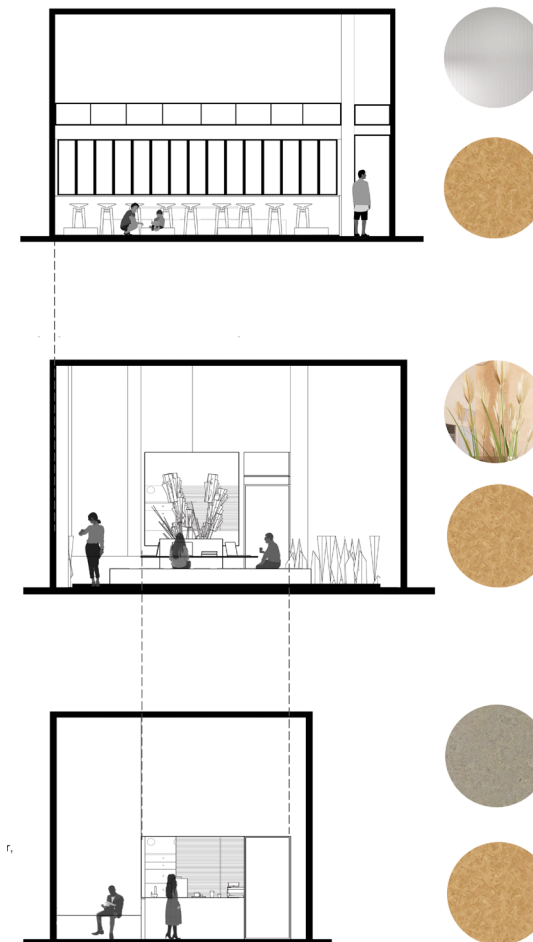
The section is showing the hierarchies in the space. All the activitier are clearly showing in the section with the figures.

Each space is indicatingt he materials and the details ares are used in the interiors.

## SECTION

Material  
Main section

2021



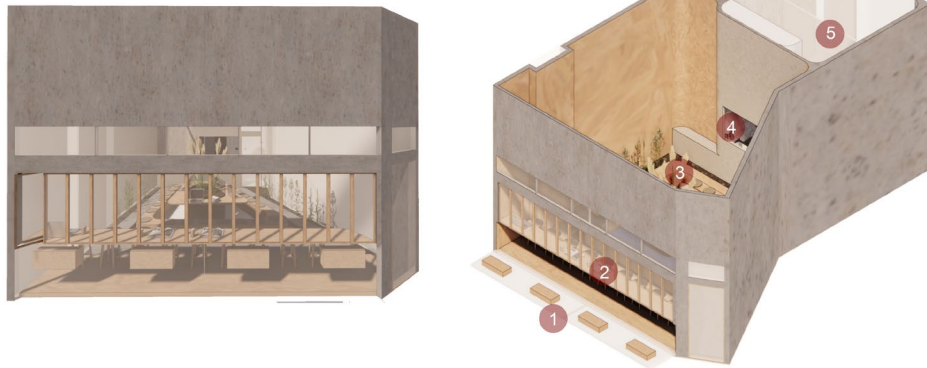
Three sections are showing the 3 different scenarios in the interior space for indicating the main activities the cutomers will happen in the space.

## SECTION( 3 LAYERS)

Section drawing  
Material  
Detail

2021





## STOREFRONT+ AXON

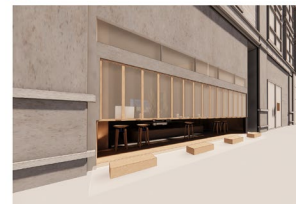
Rhino render  
3 D model

2021

The storefront render is showing the most important moment in the space. The storefront is the place to connect the exterior and interior.

The axon view illustrates the structures designed in the space, and the numbers are matching with the render on the right page.

1 The gaps allow children to enter



3 The main seating area



The renderings are showing the moments for different programs in communal and private space. The space is covered by 80% of wood to de-emphasize the boundaries between the exterior and interior for the neighbours.

2 Stool area



5 Blinds



4 Coffee making area



5 Sleeping area



## RENDERINGS

Rhino model  
Enscape renderings.

2021