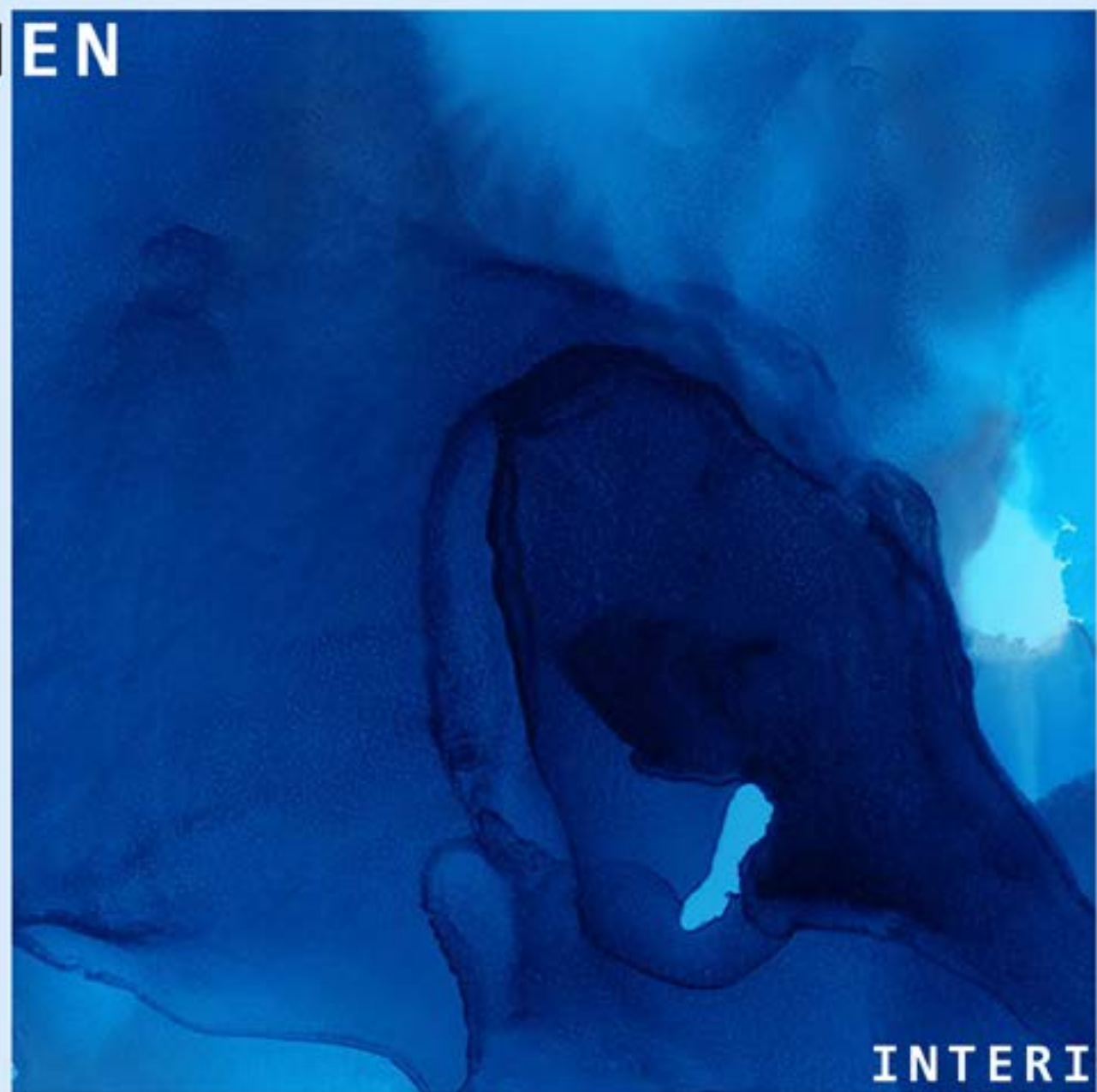
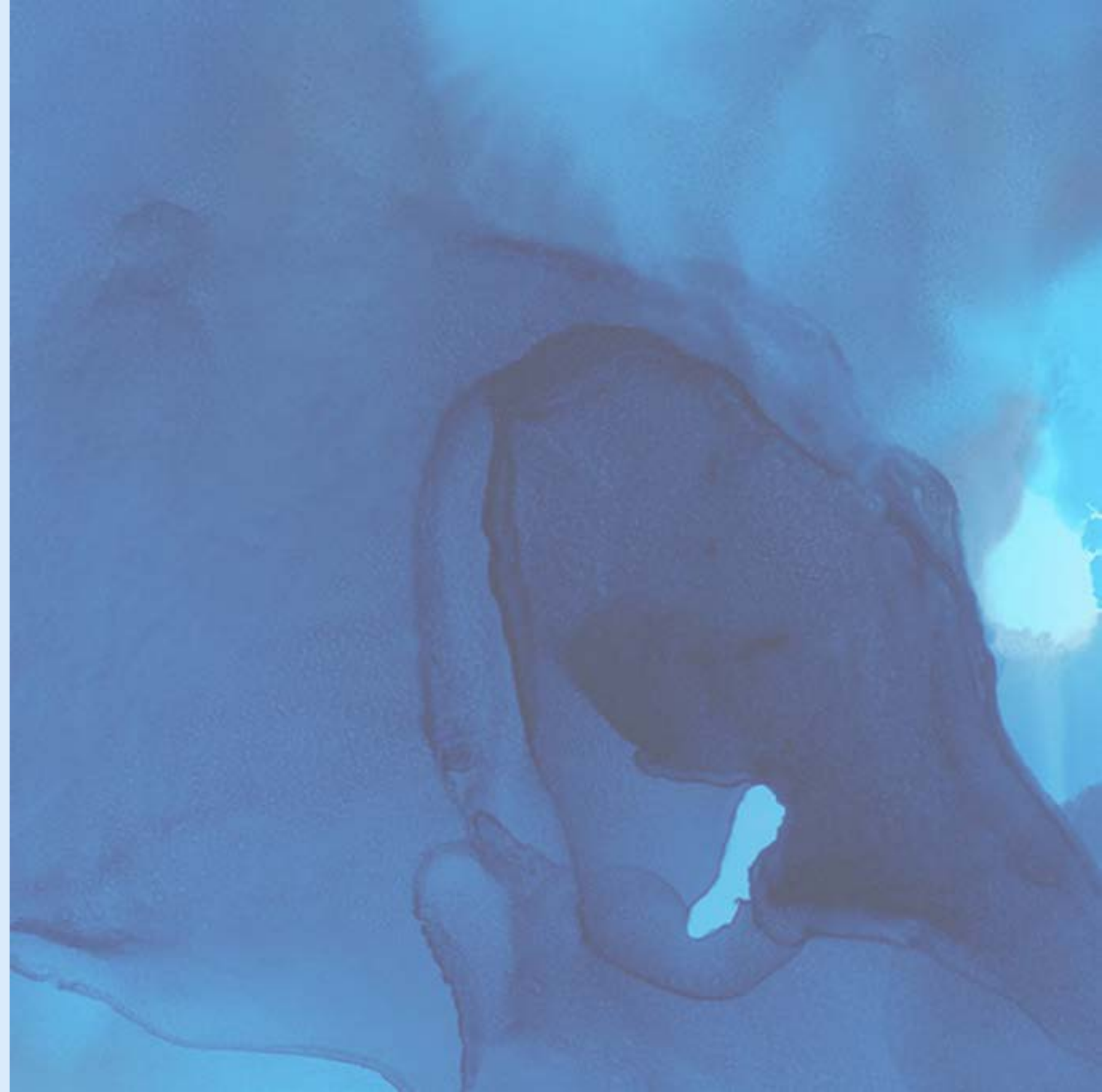


ZHONGYU  
CHEN



INTERIOR  
DESIGN



**01**



**NATURE SCHOOL**

P 01

**02**



**KEEP DANCING**

P 12

**03**



**FIRE+CHARCOAL**

P 22

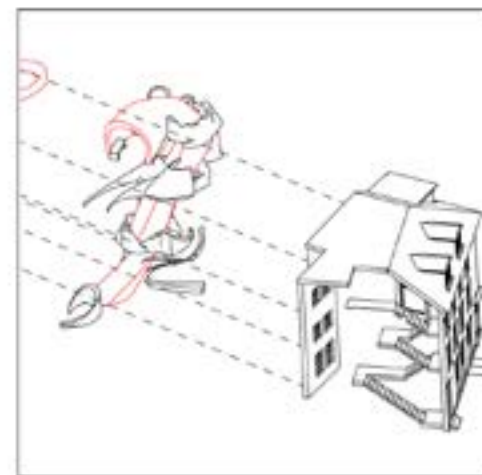
**04**



**BOOK FOREST**

P 32

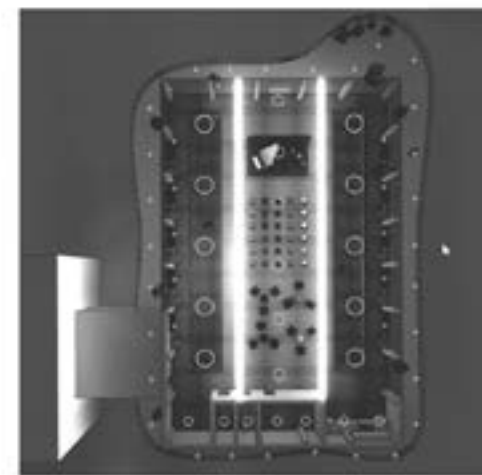
**05**



**FLOAT**

P 42

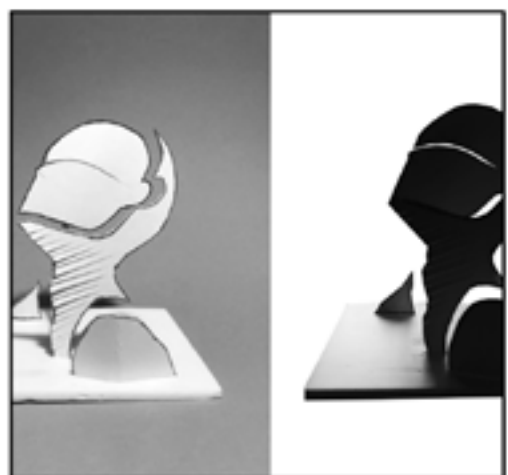
**06**



**JAZZ TIME**

P 52

**07**



**COLOR POWER**

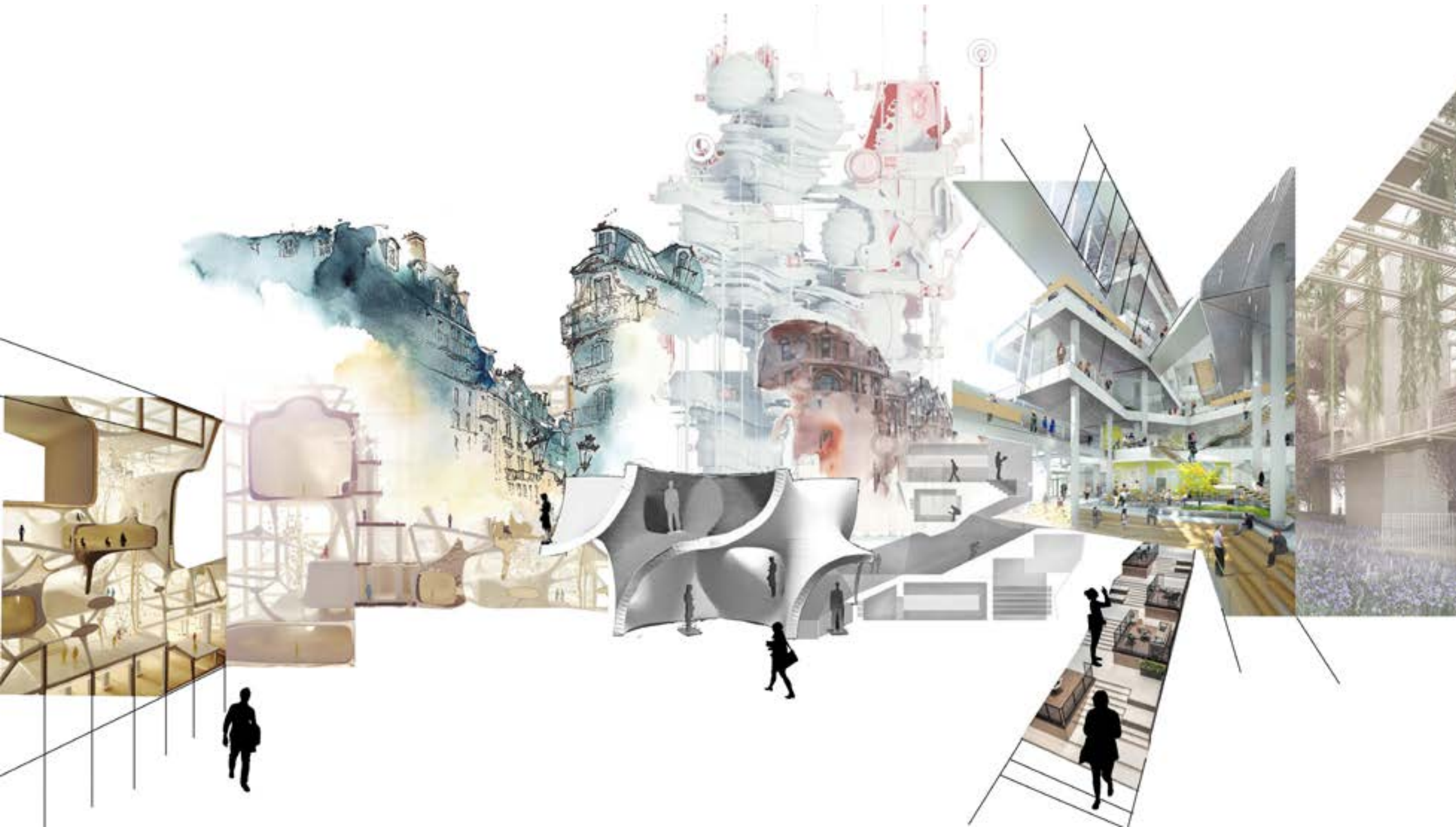
P 62

**08**



...

P



# NATURE SCHOOL 01

INSTRUCTOR  
JOHN NAFZIGER

## PROJECT BRIEF

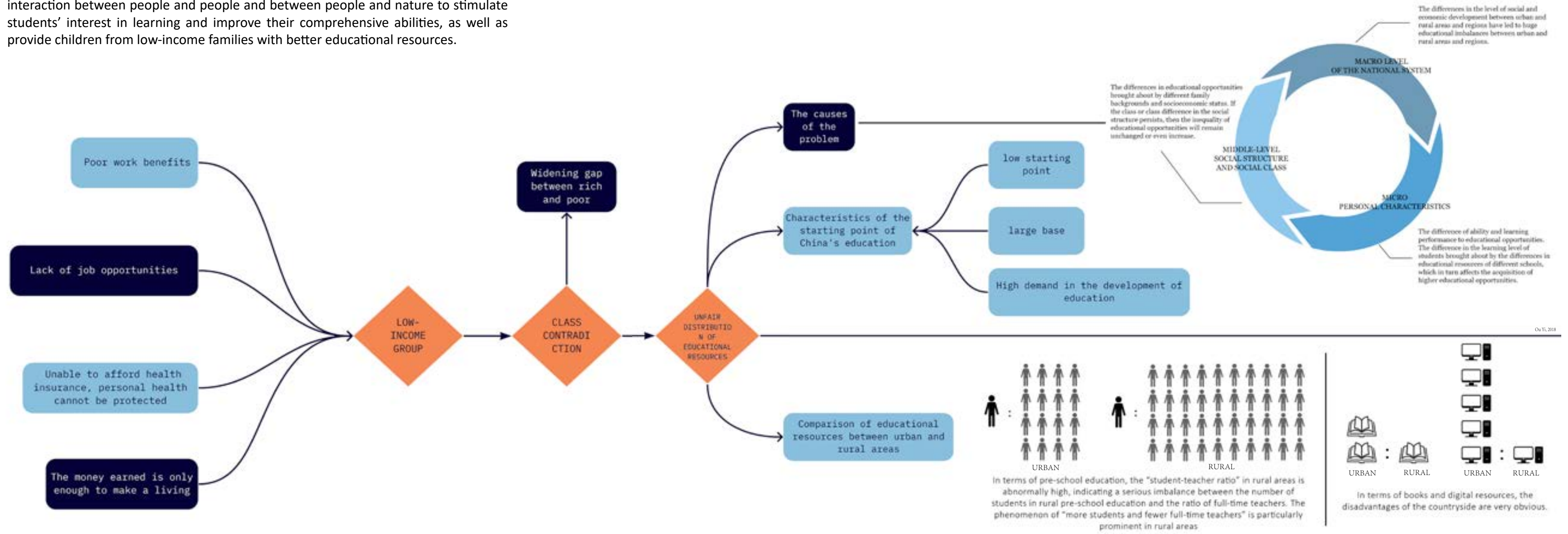
The aim of this project is to reduce the uneven distribution of rural and urban educational resources by de-signing a public school with a new education system for rural children in Xi'an, China.

## DESIGN STRATEGY

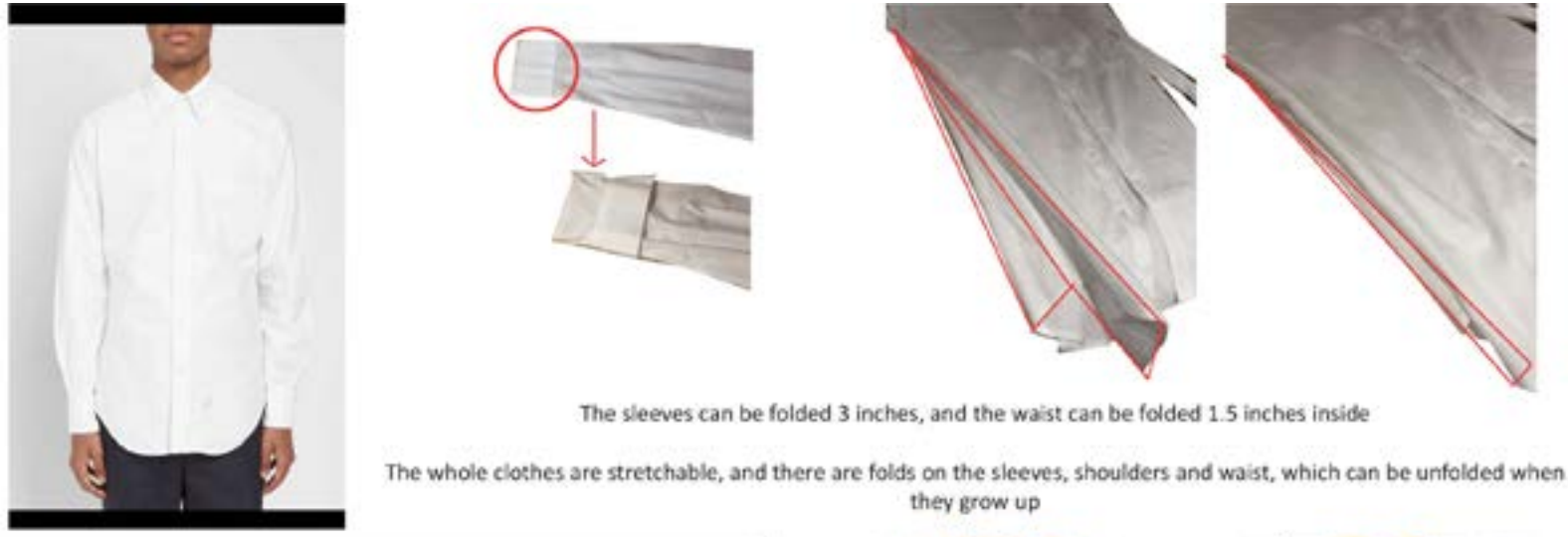
The main educational concept is nature education and shared education. The first is to integrate natural elements into the building. Unlike the traditional test oriented education model, nature education focuses on the connection between students and nature and the cultivation of personal abilities. The second is to provide advanced urban education resources to rural children by combining traditional education models and Internet education models.

# CURRENT STATUS OF LOW-INCOME PEOPLE

Through the design of a nature-based public school, the design focuses on the interaction between people and people and between people and nature to stimulate students' interest in learning and improve their comprehensive abilities, as well as provide children from low-income families with better educational resources.



BODY FIXTURE - The relationship between human and others



The school will give every new student a pure white uniform. At the end of each semester, students can choose to print two or three of their favorite photos on their clothes, or they can also print a paragraph. The school will help them design. In this way, every school uniform is unique, and students' experience will be recorded on the uniform and this also gives the uniform more meaning.



The attached vest and shirt are connected by buttons, which makes it easier for students to wear and take off. Students can personalize the shirts inside. For example, they can print a picture of an AR video about themselves on their clothes, so that when they want to share their experiences with others, people can scan the patterns on the clothes through their mobile phones to watch the AR videos. (What needs to be added is to protect personal privacy. Everyone's AR video has a password, and the video can only be watched with the consent of the video.)

## PRECEDENT STUDY, big concept, nature education

The Saunalahti School in Finland

The Finnish classrooms have the following characteristics: learning inclination, humanization, modernity and technology, flexibility and openness.

- 1 The school aims to encourage non-traditional classroom set-tings and various group learning.
- 2 The school is more supportive of students learning outside the classroom
- 3 The classroom and the class-room can be combined together.
- 4 Teachers have a lot of free space in the layout and design of the classroom, and they can dress up the classroom in accordance with their own educational concepts and teaching needs.



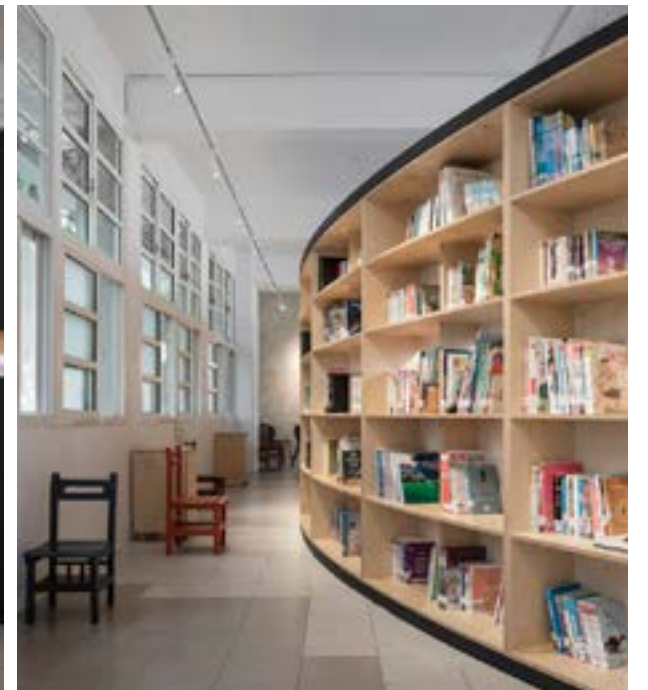
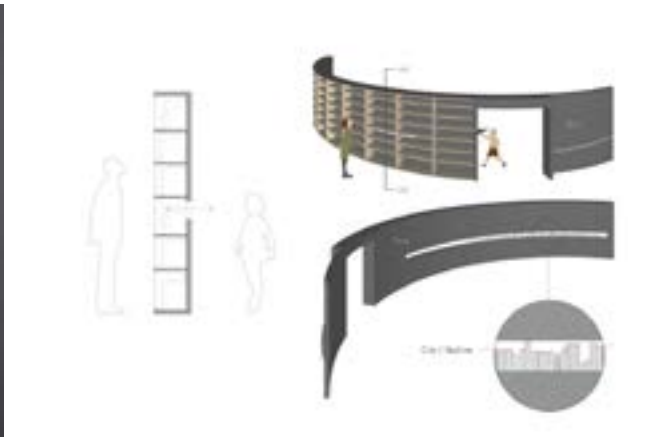
## PRECEDENT STUDY, detail, program design

Lan-Tian Elementary School

With limited resources, the school moved the library, which was originally located far from the classrooms, to a place near the classrooms. Two idle classrooms were combined and renovated into a new reading space.

**Multifunctional structure, one side is a blackboard, the other side can be used as a bookshelf.**

**Flexibility of space**



## INTERIOR COLLAGE



The atrium is a place where students gather, allowing a lot of sunlight to enter the room. Adequate sunlight is good for students to read and rest, so a large staircase with a resting place is designed and there are bookshelves on both sides of the stairs.

There will be gaps or protruding parts between different classrooms, and these spaces can be used to grow plants. Increase the utilization rate of space, and can create some additional programs such as lounge or printing room.



INSTRUCTOR  
JACK TRAVIS

# KEEP DANCING 02

## PROJECT BRIEF

Design a dancing school for African Americans in Brooklyn, and integrate African elements into the design to give users a sense of cultural identity.

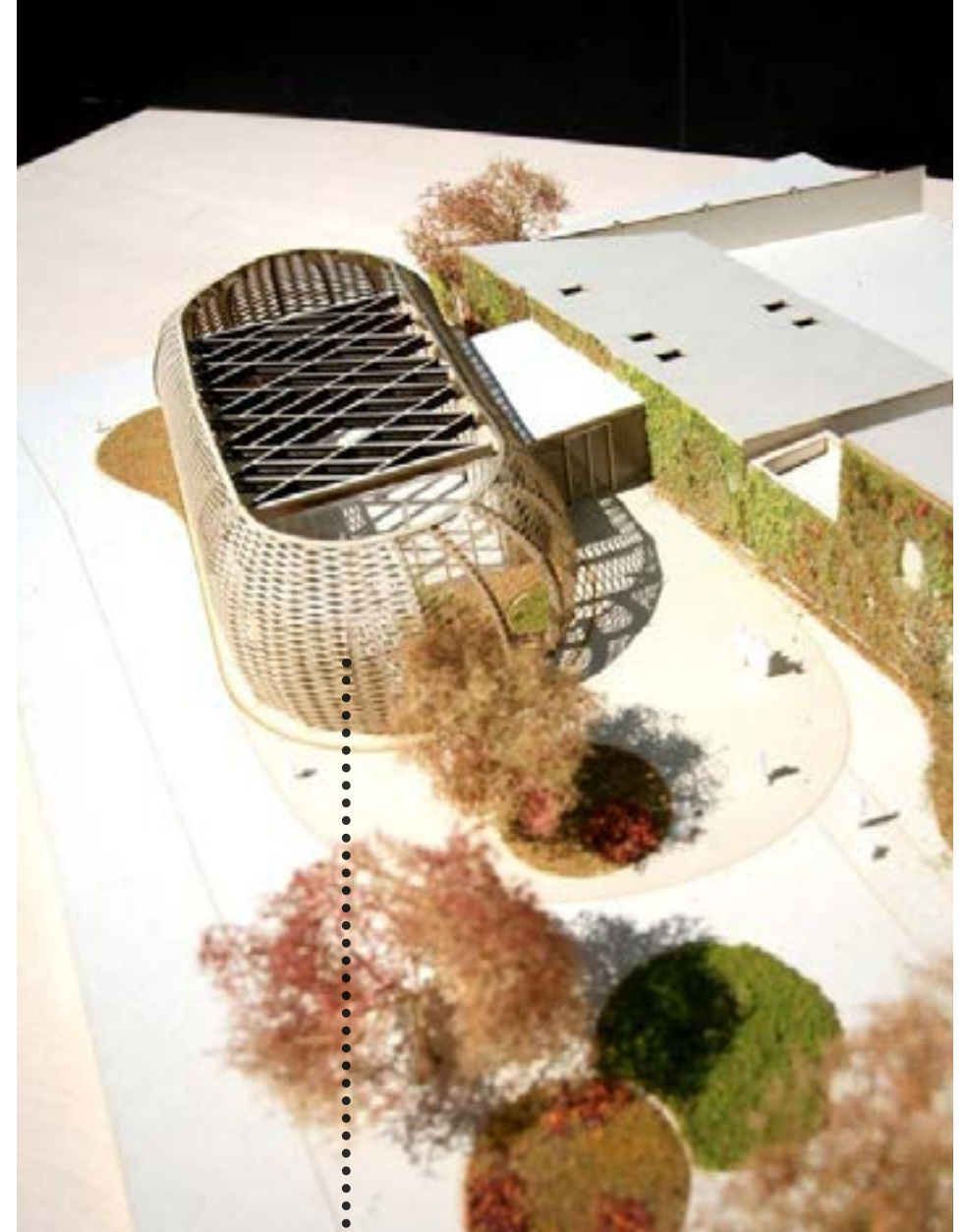
## DESIGN STRATEGY

Bring different aspects of African culture into the design, such as African symbolics, colors, and plants. Dance, representing the interaction between people, is an important part of African culture. Therefore, warm colors and baobab trees, people will carry out collective activities around it, are the main application directions, bringing the natural culture of Africa into the room. Add African masks and paintings on the side walls to enhance cultural elements.



# PRECEDENT STUDY - LIGHT AND SHADOW RESEARCH

WORKSHOP RICOSTRUZIONE  
ARCHITECTS: MARIO CUCINELLA ARCHITECTS  
YEAR: 2018  
REGGIO EMILIA, ITALY



A lot of this symbol representing justice is used in the side wooden structure

Community symbolic landmark. The dance school facade is woven with wood veneer. The curved external shading system provides shading while maintaining the overall simplicity of the building.

Create African patterns with shadows where there are no patterns

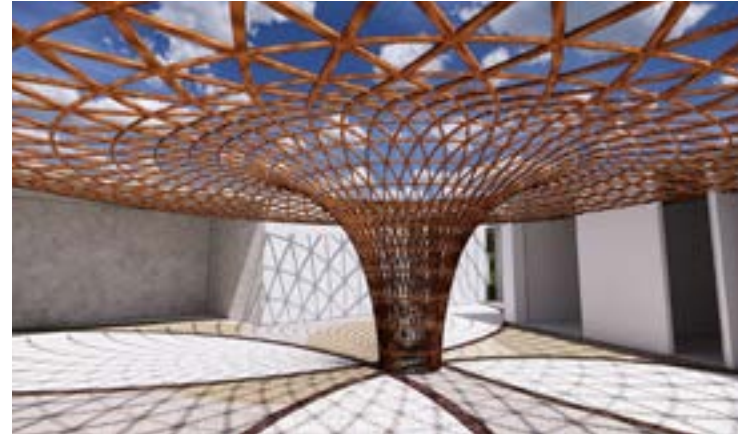
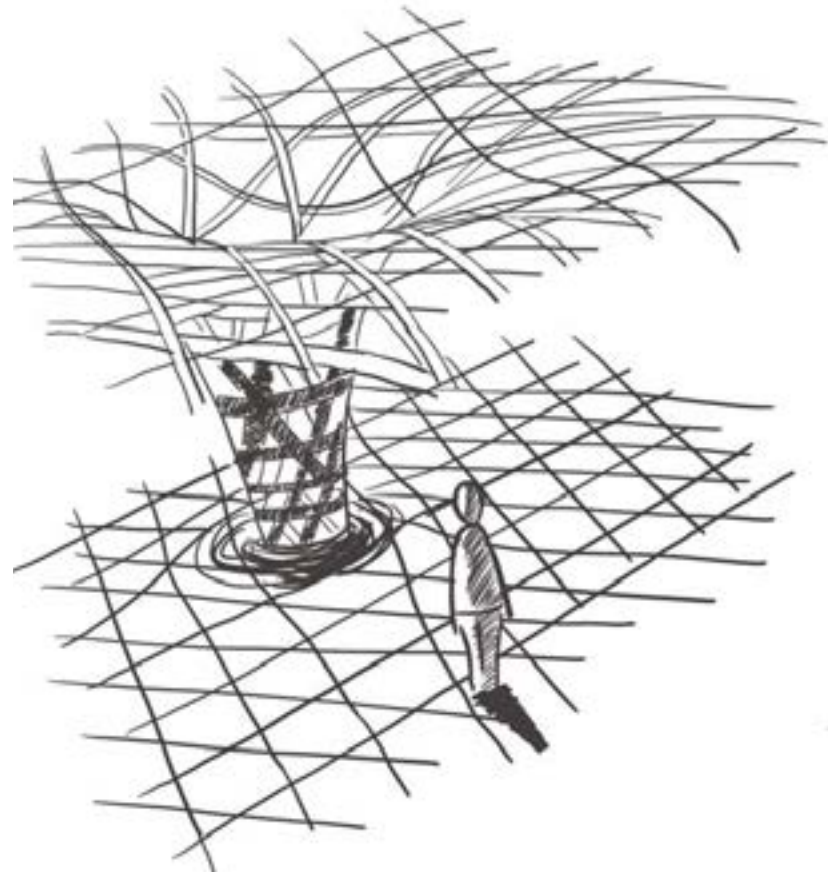
The package on the facade also forms two small garden terraces, which helps to shield the internal space and ensure the privacy of the classroom. Not only that, but the unique facade form also echoes the traditional weaving craftsmanship of the region and reflects the location of the dance school between the city and the countryside. At night, the building is lit like a lantern, warming people's hearts, and unique architectural elements become people's visual focus and symbolic landmarks.

## DESIGN PROCESS - BAOBAB TREE STRUCTURE

### Technique -- Glulam

Glued laminated timber, or glulam, is a highly innovative construction material. ... Glulam is a stress-rated engineered wood beam composed of wood laminations, or "lams", that are bonded together with durable, moisture-resistant adhesives. The grain of the laminations runs parallel with the length of the member.

This tree structure not only represents the baobab tree, but also projects the adinkra symbol onto the ground and side walls in the form of light and shadow, which well reflects the african culture



FRONT VIEW



TOP VIEW



DOWN VIEW



RENDERED PERSPECTIVE-- KITCHEN

What does a baobab tree symbolize? As distinctly African symbols, Baobab trees aren't just known for providing shade and nourishment but they're also a central part of traditional legend and lore. It is believed that kings and elders would hold meetings under the Baobab tree, with the belief that the tree's spirits would guide them in decision-making.

The structure of the baobab tree is set in the central area as a place for people to gather, and opening at the top of this area not only allows more light to enter the room, but also allows light to combine with this structure to produce light and shadow effects.

# FIRE+ CHARCOAL CAFE 03



**PROJECT BRIEF**  
Set up a cafe under Aspen Mountain to provide a resting place for skiers.

**DESIGN STRATEGY**  
Starting from the local cold environment and the needs of skiers, stoves are set up indoors and outdoors to allow users to resist the cold. The colors are inspired by warm-toned paintings, Snow Effect on the Street in Argenteuil. Outdoor landscape stones can protect the privacy of users, allowing them to enjoy the scenery and feel safe.

# MATERIAL RESEARCH - SHOU SUGI BAN



- Colorfastness
- Fire resistance
- Stain Resistance
- Water Resistance

## Rational

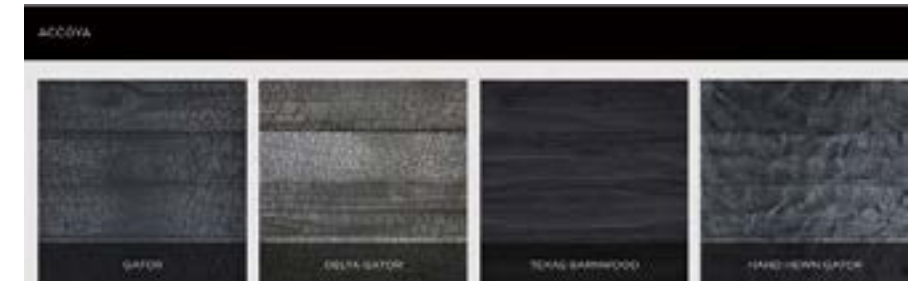
-Mode of perception: Surface mode and volume mode -This wood has the characteristics of fire resistance, anti-corrosion and insect resistance, so it can be used as a building material for the furnace inside the house. The whole material is made of fired, which gives a warm feeling in the cold weather.

## Procurement

- Lumber is cut from Douglas fir and oak trees located in the Netherlands. Processing in Japanese cities including Naoshima, Tonosho, Shodoshima, Takamatsu and Sakaide. Purchased by European companies, and mainly available in the US -Delta, a European company, is the local representative for Shou Sugi Ban. -Standard thickness is 0.8" and minimum width is 7". -The cost of Shou Sugi Ban is about \$8 per minimum standard, and the installation cost is \$15/sf.

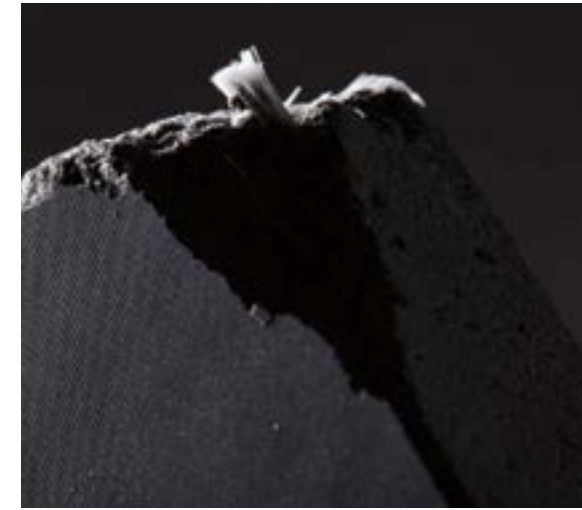
## Installation Methods

-The wood can be used for cladding, siding, fences and furniture, in interior and exterior applications. -Mainly installed on the wall or on the floor.





Fire resistance  
Impact Resistance  
Stain Resistance  
UV Resistance  
Frost resistant



## DINAMIC.CCC

### Rational

- Mode of perception: Surface mode
- This material has a strong hardness and sound protection, so it can be used to build the exterior of the cafe. Good sound protection ensures that the cafe shop's environment does not cause an avalanche.

### Procurement

- Using a combination of fine cement and glass fiber in chopped fiber, continuous roving, and fiber mesh, the sheets are created in continuous forms. This technology is mainly used in Dinamic.ccc

which is located in Netherlands, so the materials are mainly purchased on the company's website.

- Dinamic.ccc is the local representative.

- Max 1.250 x 3.600 mm, Minimum thickness is 10mm

### Installation Methods

- Applications are for exterior cladding of residential, commercial, and institutional buildings.

- No structural support needed,

- The material properties of GRC depend on the production method. The DinamiC•CCC panels are made by using the patented automated continuous process technique.

With this process it is possible to combine the patented matrix with a special reinforcement composition. Herewith a mixture of fibres is applied consisting of chopped fibres, continuous endless "rovings" and fibre mesh. This so called "cocktail-technology" is especially developed for the DinamiC•CCC products.

## MATERIAL SCHEMES COMPARISON

### Scheme A

Olfactory: Earth, Rose, Vanilla

Haptic: Oil

Gustatory: Chocolate pudding,  
Avocado, Beef Gravy

Visual: Oil paintings: Vermeer,  
Jean August Dominique Ingre

Auditory: Wagner, Beethoven,  
Music in minor Key



### Scheme B

Olfactory: Rain, Pine, Lemon  
zest

Haptic: Sand paper

Gustatory: Lime Sorbet,  
Cucumber, Sauerkraut

Visual: Watercolor Paintings:  
Charles Demuth, John Singer  
Sargent

Auditory: Mozart, Vivaldi,  
Music in major Key



# MATERIAL PROPOSALS & FURNITURE SELECTIONS



1 Antique Heart Pine, Interior Furniture  
 2 Flat Cut Teak, Exterior Furniture  
 3 Siwer Travertine, Exterior Floor  
 4 Chiseled Finish, Stone, Interior Wall  
 5 Pietra Dorata, Stone, Interior Wall  
 6 Heart Pine, Interior Floor  
 7 Wool Carpet, Interior Floor

8 leather, Brown, Furniture Cushion  
 9 Fabric, Vinyl 83%, Polyester 17%, Furniture Cushion  
 10 Pattern: Zenith, Color: Honey, Curtain  
 11 Heath Ceramics, Restroom Wall  
 12 Handmade Ceramic Tile, Restroom Wall  
 13 L'antic Colonial, Restroom Wall



## CLIENT PROFILE AND SITE INFRO

INTERIOR:

|                       |       |
|-----------------------|-------|
| Reception / Host      | 1     |
| Bar / Counter Service | 1     |
| Mail / Deliver        | 1     |
| Pantry / Kitchen      | 1     |
| Powder Room           | 1-2   |
| Server Station        | 1-2   |
| Storage               | 1-2   |
| Seating               | 25-35 |

COVERED TERRACE:  
Lounge Seating  
Cocktail Tables  
Planter  
Sculpture

LOWER TERRACE:  
Lounge Seating  
Sculpture  
Planter



OWNER: Ms. Brown  
Gender: Female  
Age: 45  
Personality: nice and helpful  
Hobbies: skiing and photography

Ms. Brown graduated from Pratt Institute and went back to her hometown, Aspen. When she was a child, she dreamed of having a cafe on the Aspen Mountain for people to have a rest and enjoy the beautiful view of the mountain so she opened this cafe when she got back.

USER GROUP:  
People visiting Aspen and local people as well



POSITION OF CAFE

## CONCEPT COLLAGE

### After-ski activities

Snow Mountain is closed at 4 pm. People will carry out various activities after the snow is over. There are many different kinds of restaurants under the snowy mountains, such as American, Italian, Japanese, etc. People will go to these restaurants to eat. The restaurant on the top of the hill will continue to open until 10:00 pm after the snow mountain is closed. Some people will choose to watch the sunset. Members of the Snow Mountain Club will hold various parties. Many people also decide to go to the coffee shop to rest. Some tourists from other places will want to stay in a hotel under the snowy mountains, while another part of the tourists will drive away. Snow Mountain is closed at 4 pm. People will carry out various activities after the snow is over. There are many different kinds of restaurants under the snowy mountains, such as American, Italian, Japanese, etc. Some people will choose to watch the sunset. Members of the Aspen Mountain Club will hold various parties. Many people also decide to go to the coffee shop to rest.



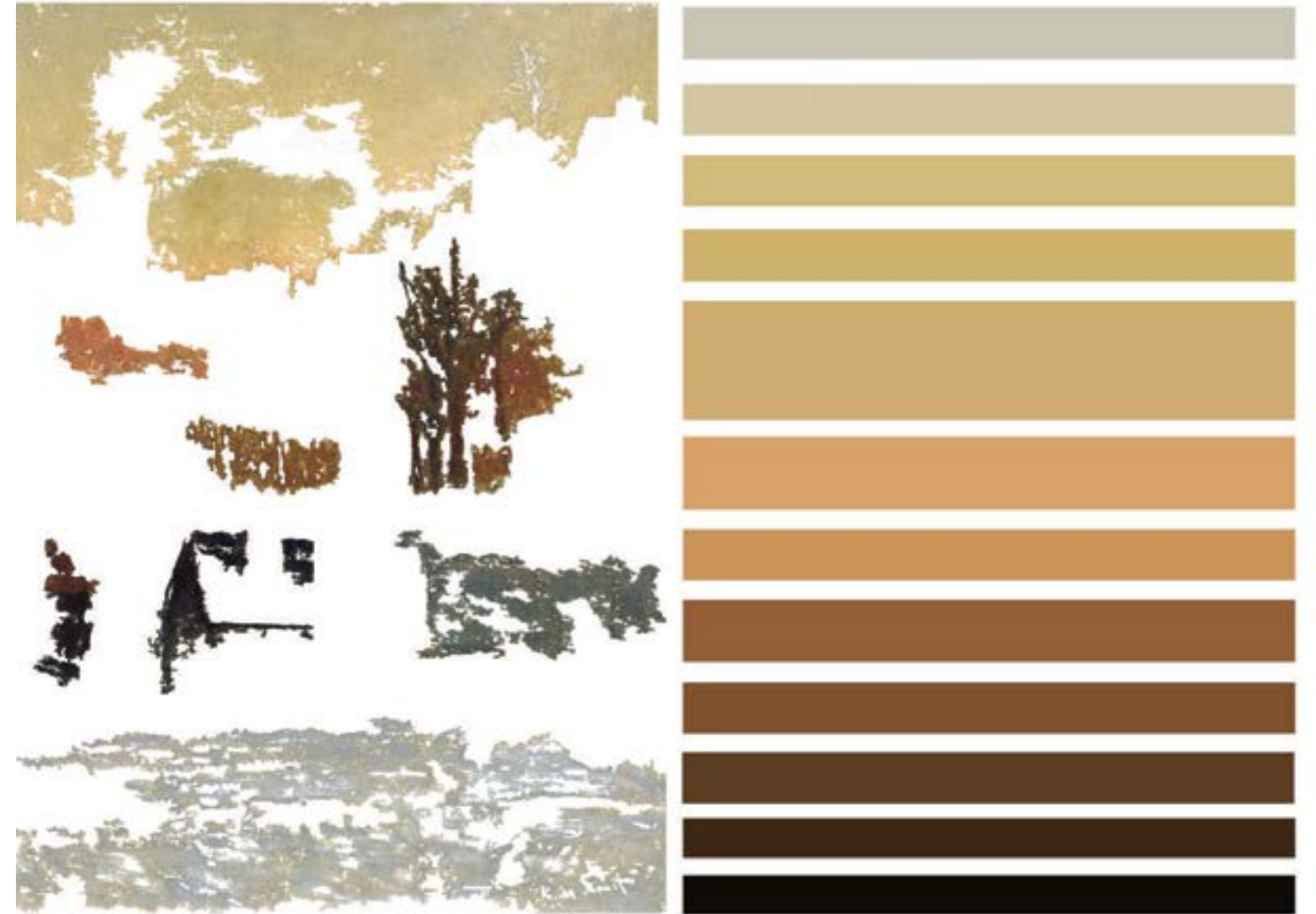


CONCEPT DEVELOPMENT- ARTWORK

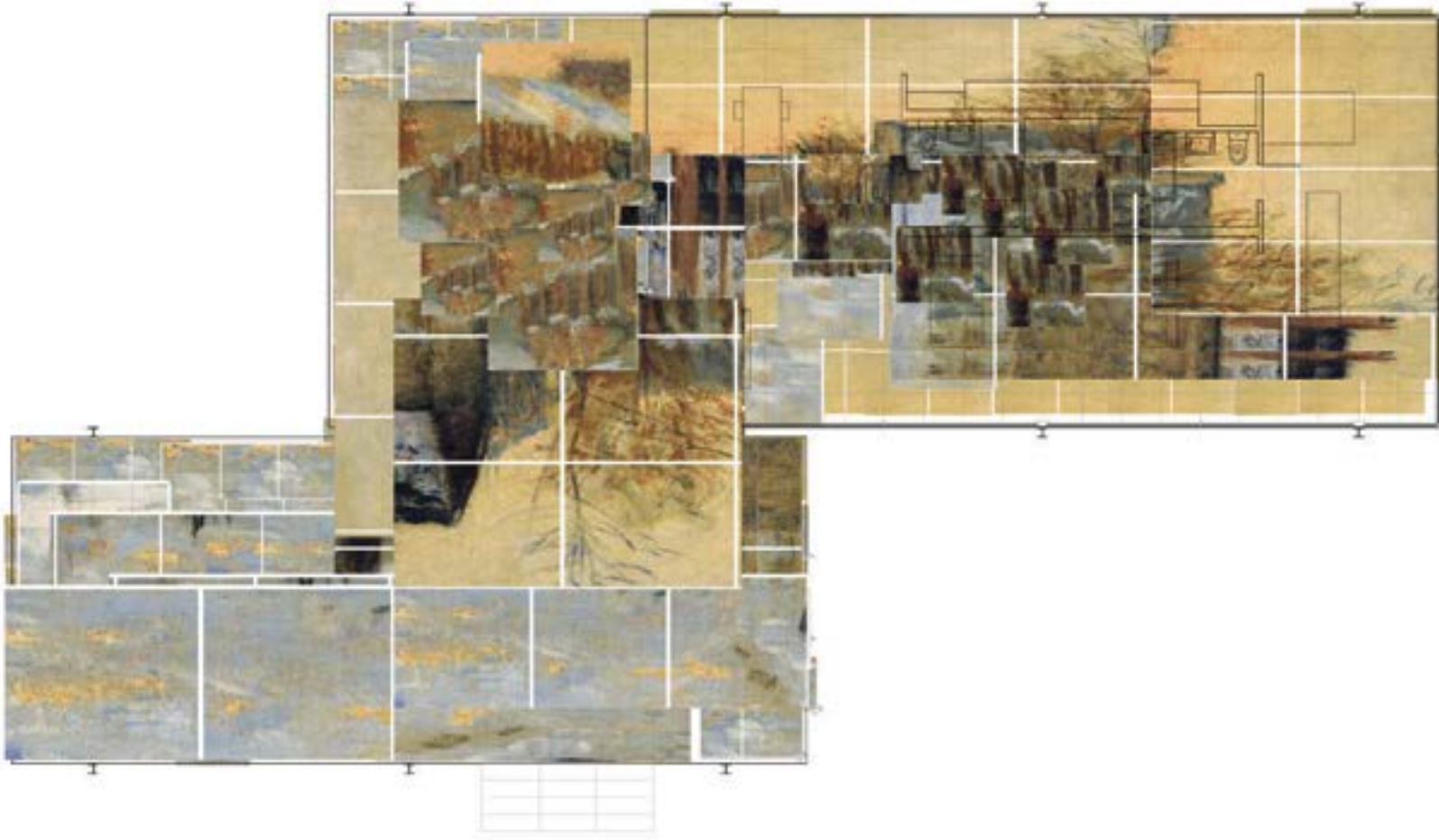


Snow Effect on the Street in Argenteuil, Claude Monet, 1872, Musee Marmottan

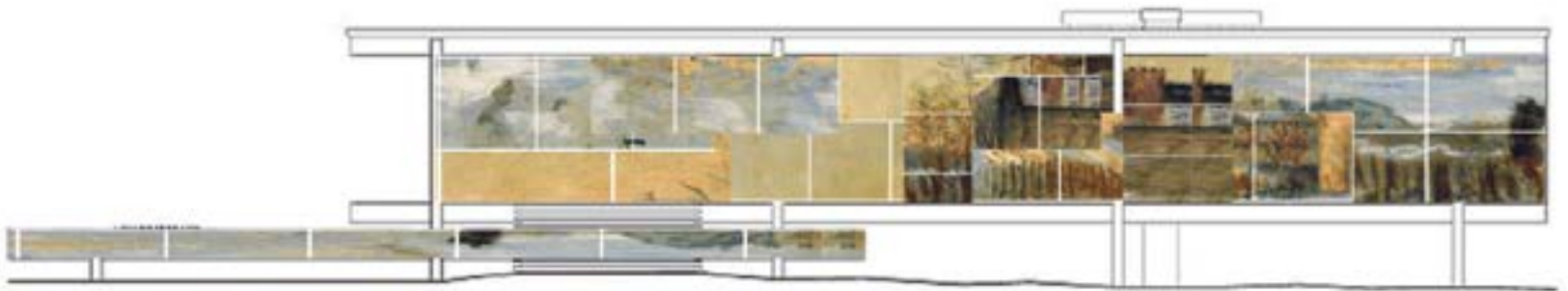
COLOR ANALYSIS



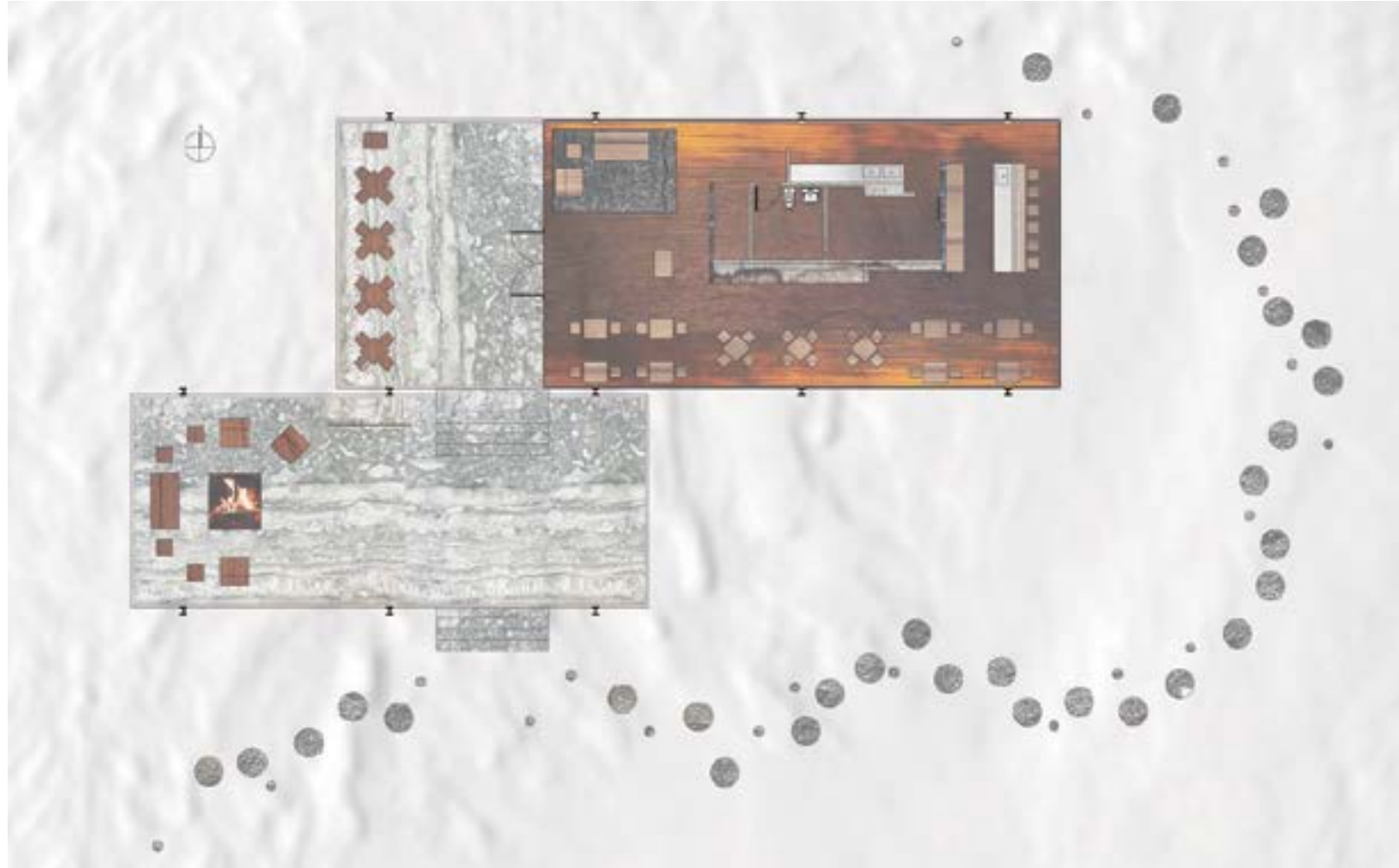
FLOOR PLAN COLLAGE



ELEVATION COLLAGE



# RENDERED FURNITURE PLAN



# RENDERED LIGHTING PLAN





# BOOK FOREST 04

INSTRUCTOR  
MARC SCHAUT

## PROJECT BRIEF

Redesign the Brooklyn Library to improve the efficiency and comfort of the space.

## DESIGN STRATEGY

Arranging the bookshelves from low to high creates a jungle feeling and can guide users from one floor to a higher level. The straight line book shelf combined with the semicircular structure of the site creates more viewing angles for the space. The public area is separated from the private area to protect privacy while ensuring a good user experience.

## FINAL FURNITURE CONSTRUCT



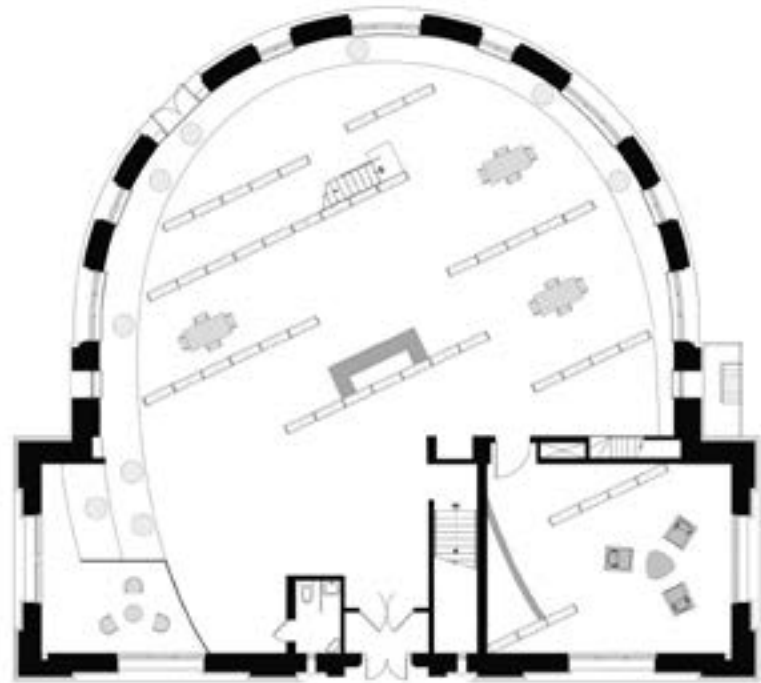
The main purpose of my final model is to allow people to have a more comfortable experience while standing or sitting and reading. This is a wearable chair, the front part of the chair can be tilted forward, and the user can read the bookshelf in the upper part of the front. The lower half of the front side can be used to store books. And there is a small light on the top of the front side to ensure that the user has enough light. At the back of the chair is a movable chair cushion that is designed to sit on the cushion while the user is sitting on the floor. And the user can unfold the main body of the chair to use more space and the device can provide good privacy.

## CONCEPT COLLAGE

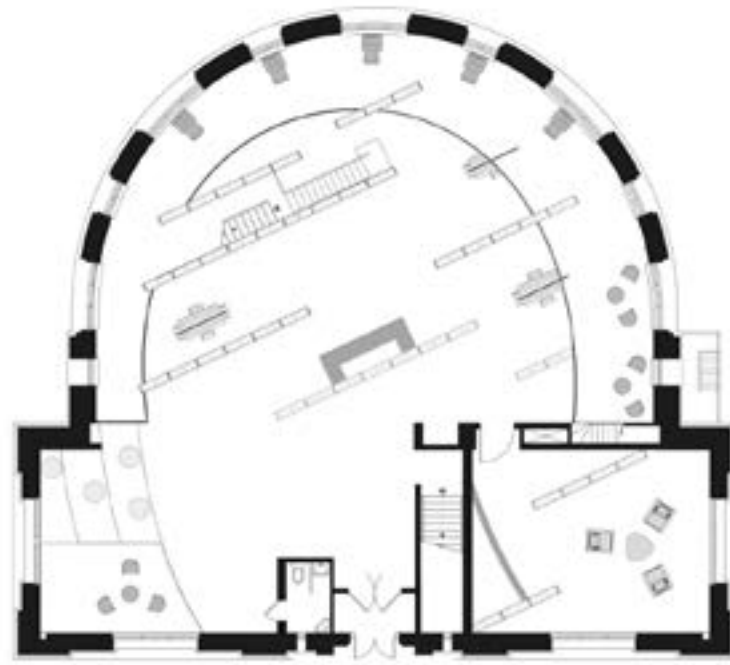


# FLOOR PLANS & SECTIONS

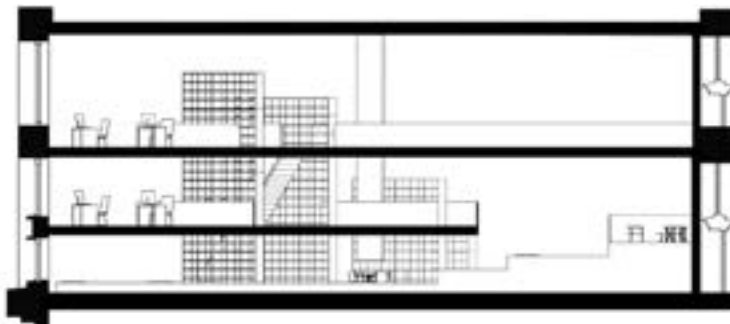
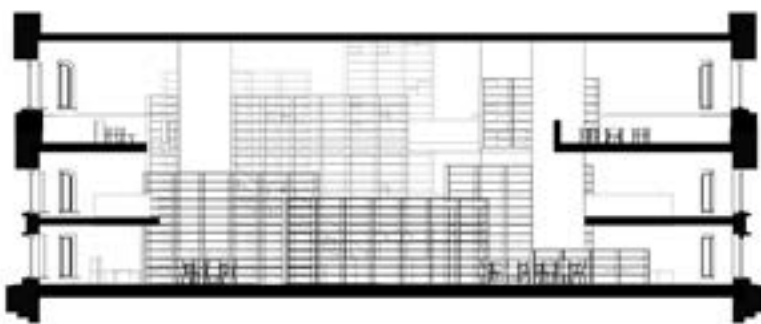
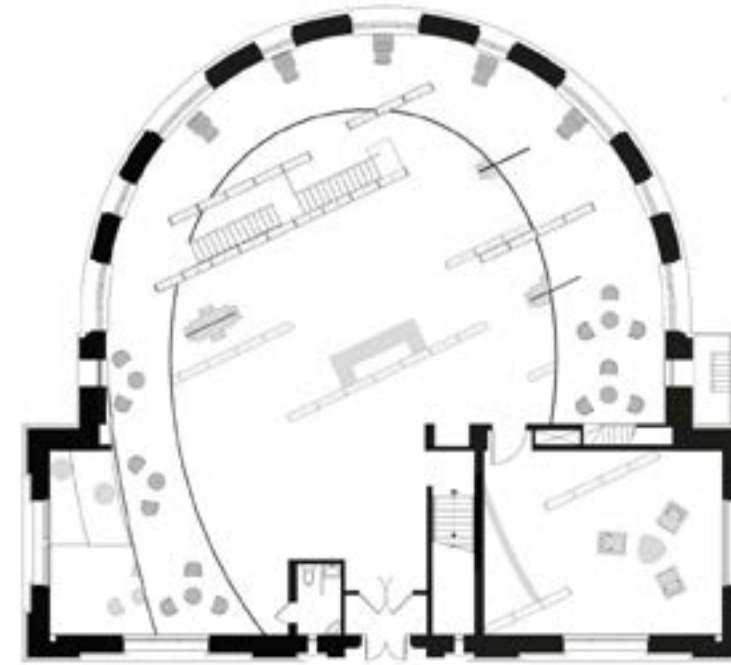
FIRST FLOOR



SECOND FLOOR



THIRD FLOOR



The bookshelves have different heights, which are placed from low to high, which can reflect the layering. Some bookshelves extend from one layer to the mezzanine or two layers to support. The stairs are hidden behind the back high bookshelf. The second and third floors use a similar principle to a circular staircase. The front is the computer area and the rest is the rest reading area.

which gives the reader more visibility and more light in the room. Another benefit of exposing the bookshelf is that it is very flexible. If the room is too exposed, you can put more books on the bookshelf to isolate the space. Water glass is placed on the reading table on the first floor, and there is a linear light under the water glass. There is a stepped chair around the first floor with a cushion placed on it. There is a group meeting place in the lower left corner and a bar in the lower right corner. The wine rack also uses the same principles as the summer vacation.

RENDER VIEWS





# FLOAT

05

INSTRUCTOR  
WILLIAM WATSON

**PROJECT BRIEF**

Design a four story retail store. Break the traditional concept and show the brand effect.

**DESIGN STRATEGY**

Starting from how to lead customers upstairs, try innovative staircase design. Inspired by “phantom”, it creates a feeling of floating upwards and a sense of mystery, which arouses the curiosity of customers to go upstairs to find out. Place clothes display racks around the “phantom” structure to increase the brand’s exposure.



# CLIENT RESEARCH - HOUSING WORKS

- 1990 Housing Works Founded 
- 1992 First Thrift Store Opens in Chelsea
- 1995 Housing Works breaks ground on East 9th St. Housing
- 1997 Housing Works goes to war with Gulliani
- 1998 East New York community health center opens
- 2005 Housing Works settles city lawsuit 
- 2016 HASA for All

Housing Works operates several enterprise businesses including acclaimed Housing Works Thrift shops and the Housing Works Bookstore Cafe. Together these businesses help provide crucial funding towards Housing Works mission in addition to providing employment opportunities to the community.



HOUSING WORKS' BOOK STORE ANALYSIS



HOUSING WORKS' THRIFT STORE ANALYSIS

## DESIGN PROCESS



For over 25 years, Housing Works has addressed the needs of over 30,000 individuals that other organizations deem “too challenging” to serve. Based on a harm reduction framework, our programs are both holistic and empowering. For example, we provide housing, healthcare, job training, legal services.

## STUDY MODEL



The interior is filled with a curved structure, which guides customers to go upstairs. The curved structure also makes the interior space more flexible, and can be used as a fitting room and shelf

## SECTION MODEL

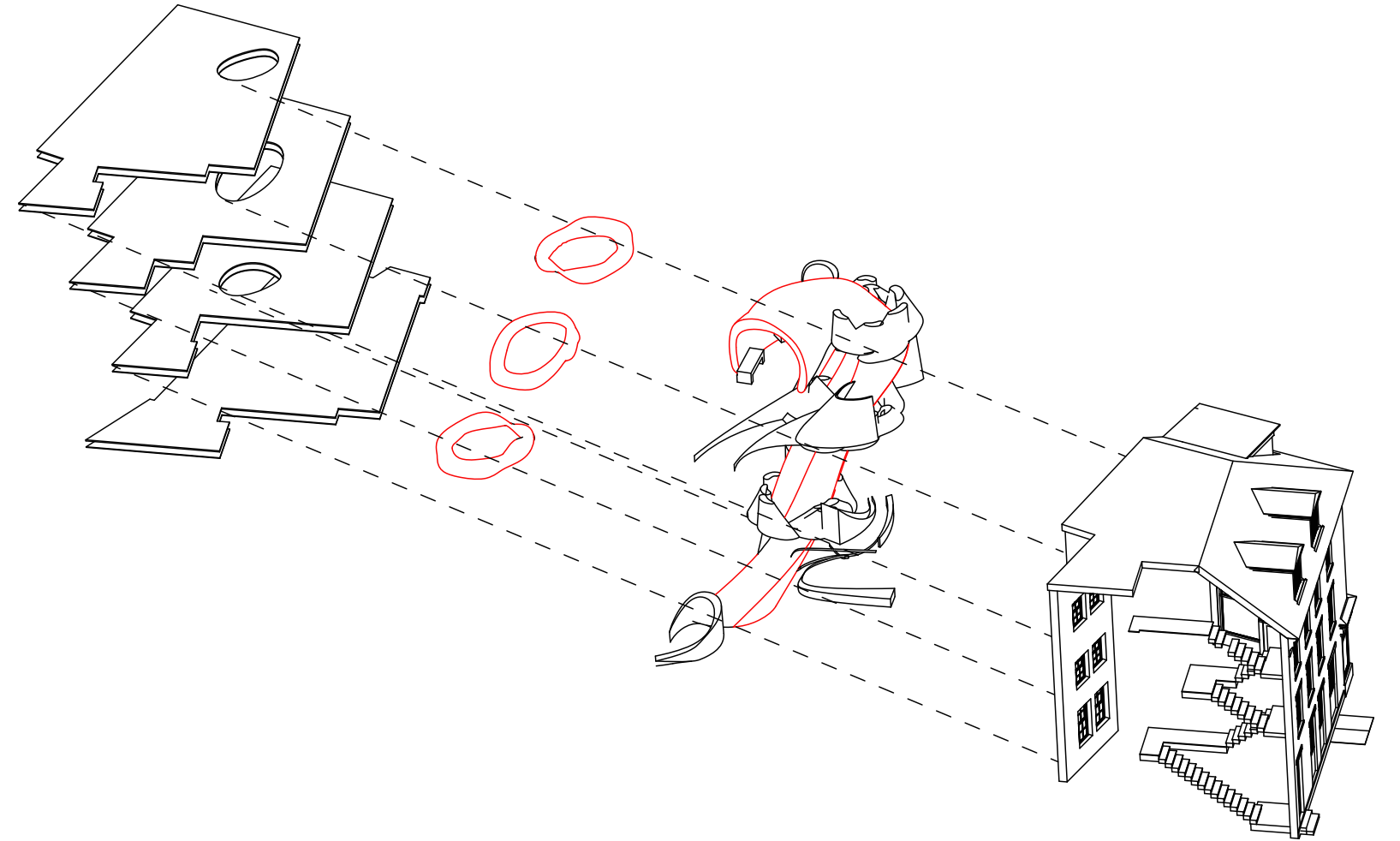


Inspired by the curved structure, a translucent spiral "phantom" like structure was created and wrapped around the stairs to connect the 4 floors. The whole structure gives people a floating feeling and creates a sense of mystery, guiding customers upstairs to find out.

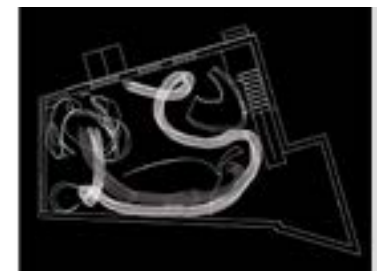
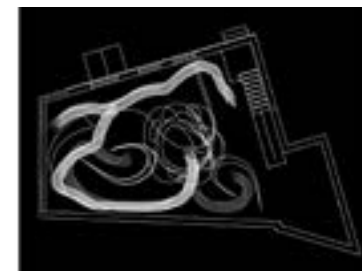
FINAL MODEL



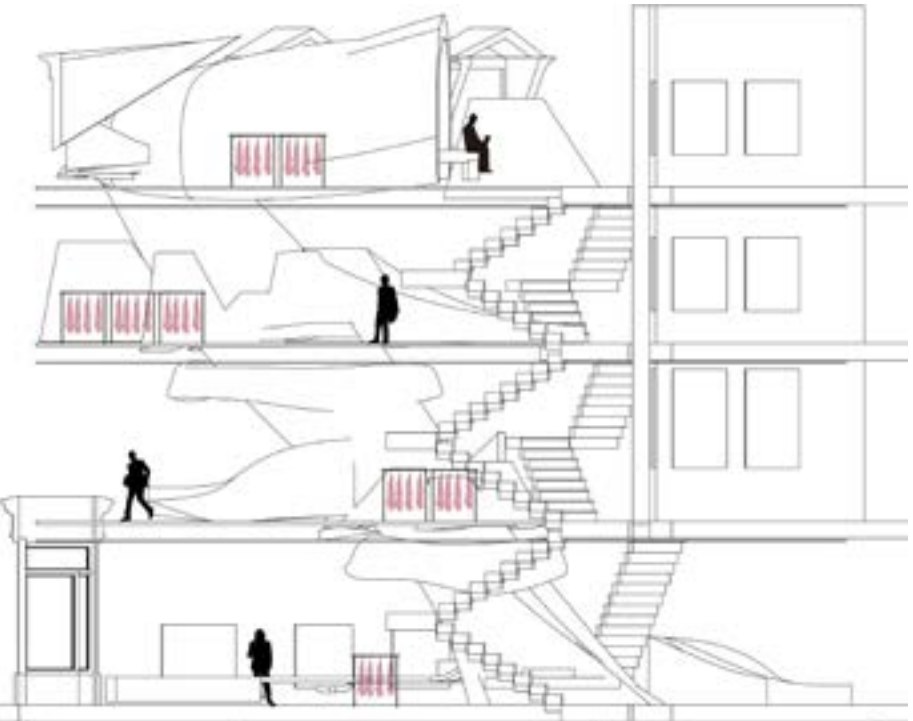
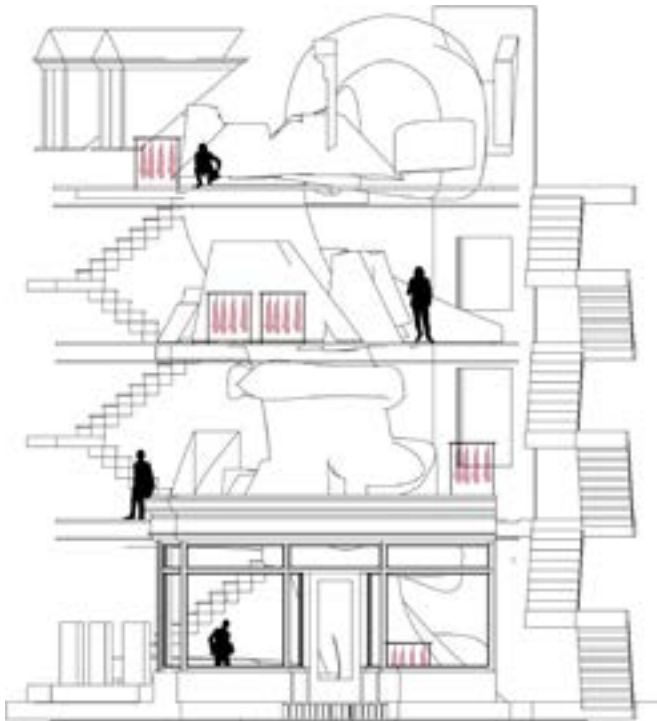
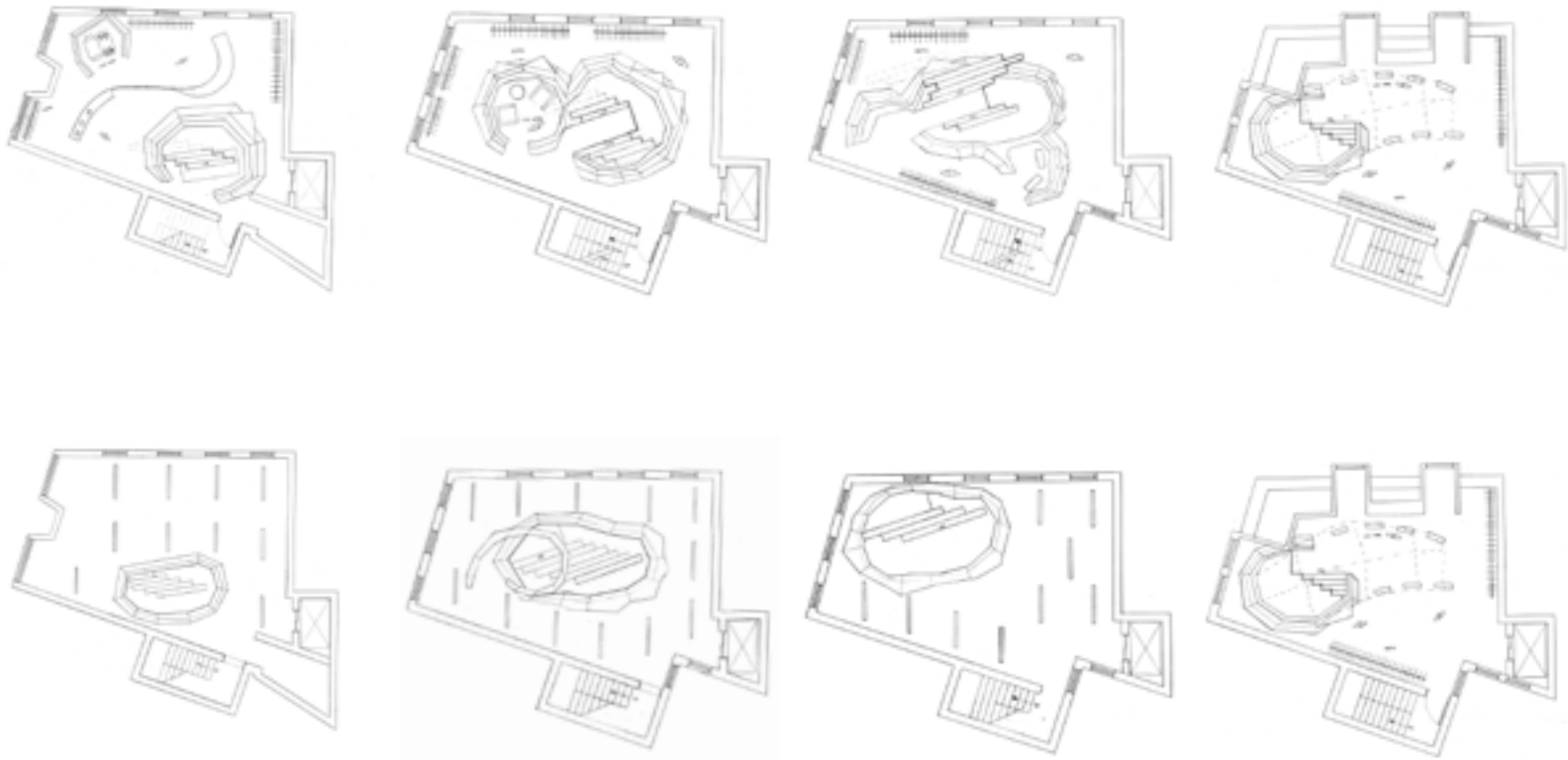
AXO DRAWING



CIRCULATION DIAGRAM



FLOOR PLAN, RCP, AND SECTION DRAWINGS





INSTRUCTOR  
TINA MIDTGAARD

# JAZZ TIME 06

**PROJECT BRIEF**

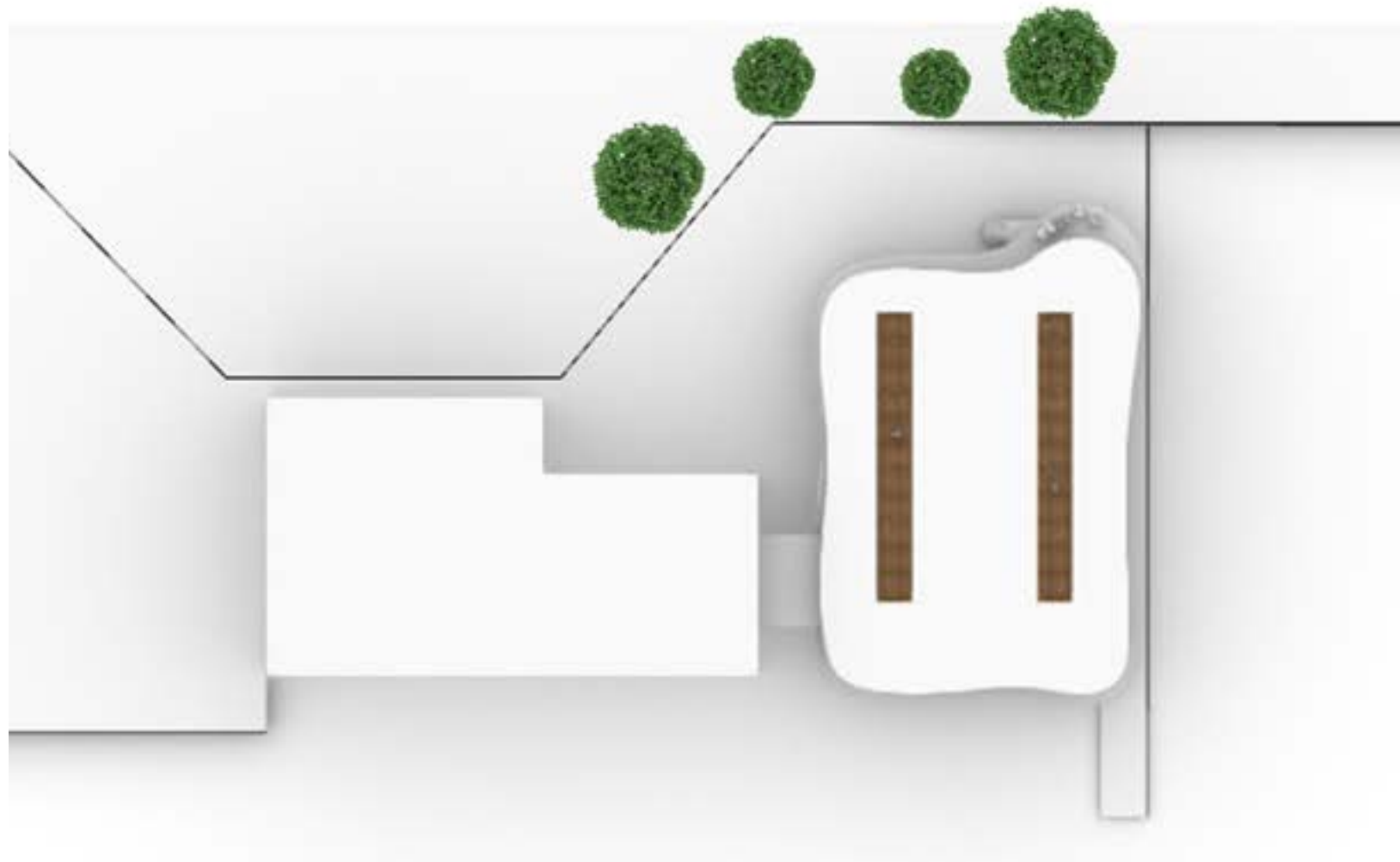
Design a culture house for the residents of Copenhagen, providing activities and entertainment for nearby residents, people of all ages.

**DESIGN STRATEGY**

The program is designed based on the cultural life of the local residents, and the space is for gatherings, concerts, and reading. The side walls are made of transparent glass, which provides plenty of sunlight and a good view, connecting with the adjacent park. To cater to the local leisure life philosophy, a large number of curved structures are adopted to provide a sense of comfort and rhythm.

## INTRODUCTION

The site is located at the entrance to Falledparken. Two buildings, one is a monumental sandstone post office and the other is a concrete modular, are connected by a transparent stair and elevator tower in glass. The mezzanine floor is designed to be a cooking school for 20 children and 2 instructors, and the first floor should be a library and flexible space. Based on the culture house concept, I am planning to design a place with wide view, comfort and safety.

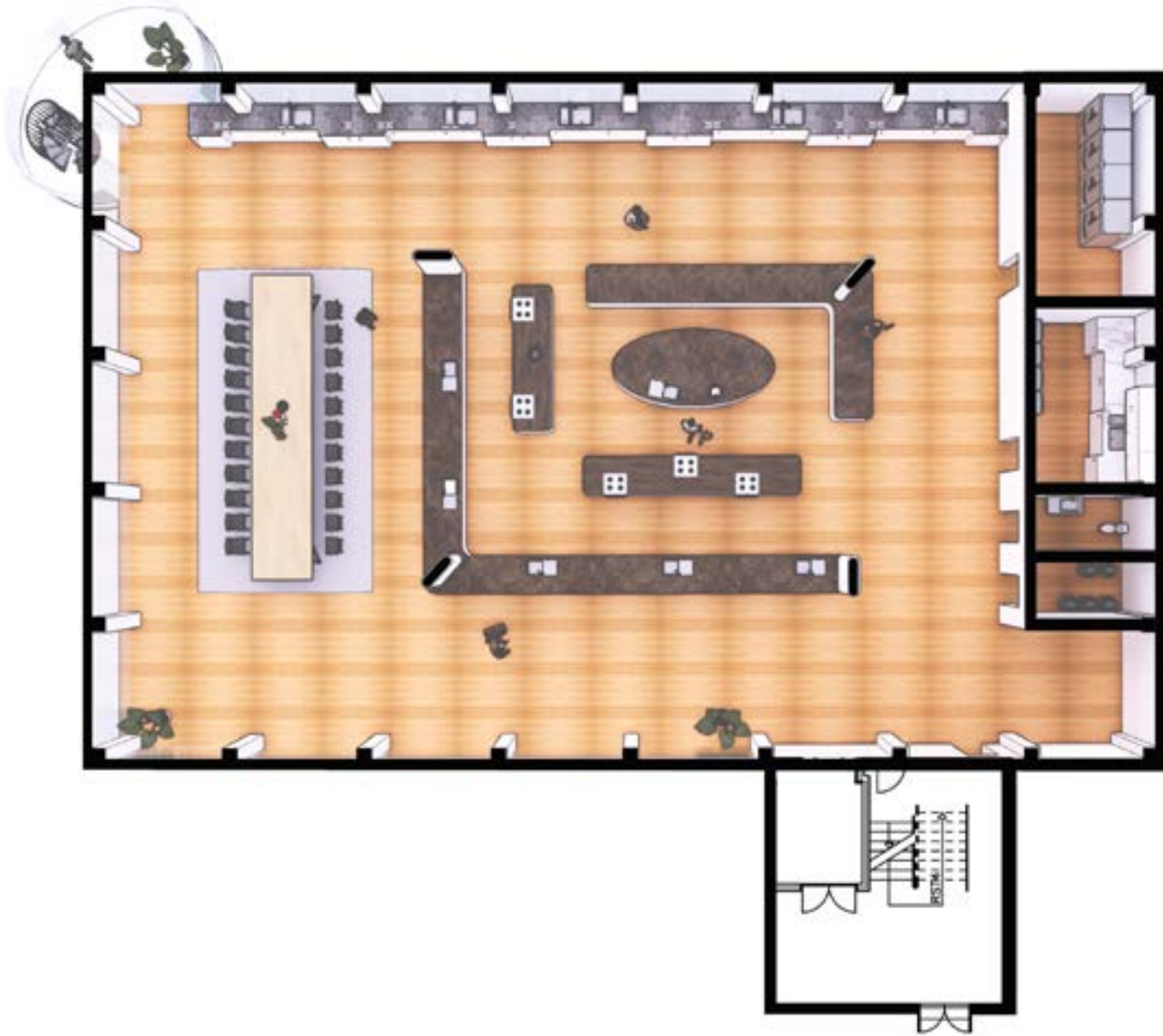


Inspired by the shape of the plant, the curvilinear structure is added to the original cuboid building, and the elements of nature are integrated into the building, which not only makes the building more vivid, but also creates more outdoor space for people to do the outdoor activities. The interior also uses a lot of curved elements. Considering that many children will come to this building, curved furniture can ensure their safety. The circulation will also become more diverse as the structure changes from a linear element to a curved element.

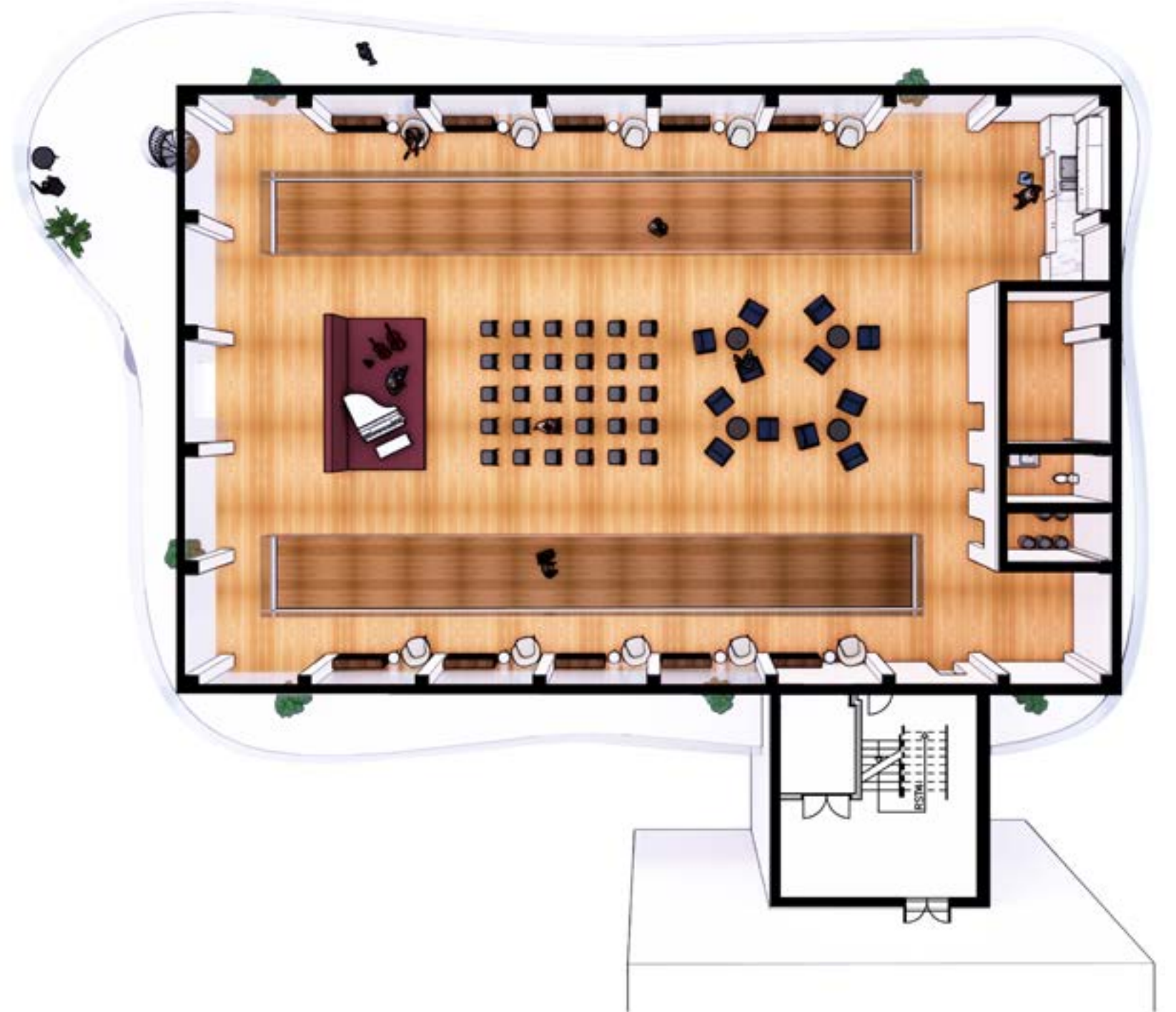
Because there is a slope on the ground, the balcony width of the mezzanine floor should allow people and vehicles to safely pass underneath.



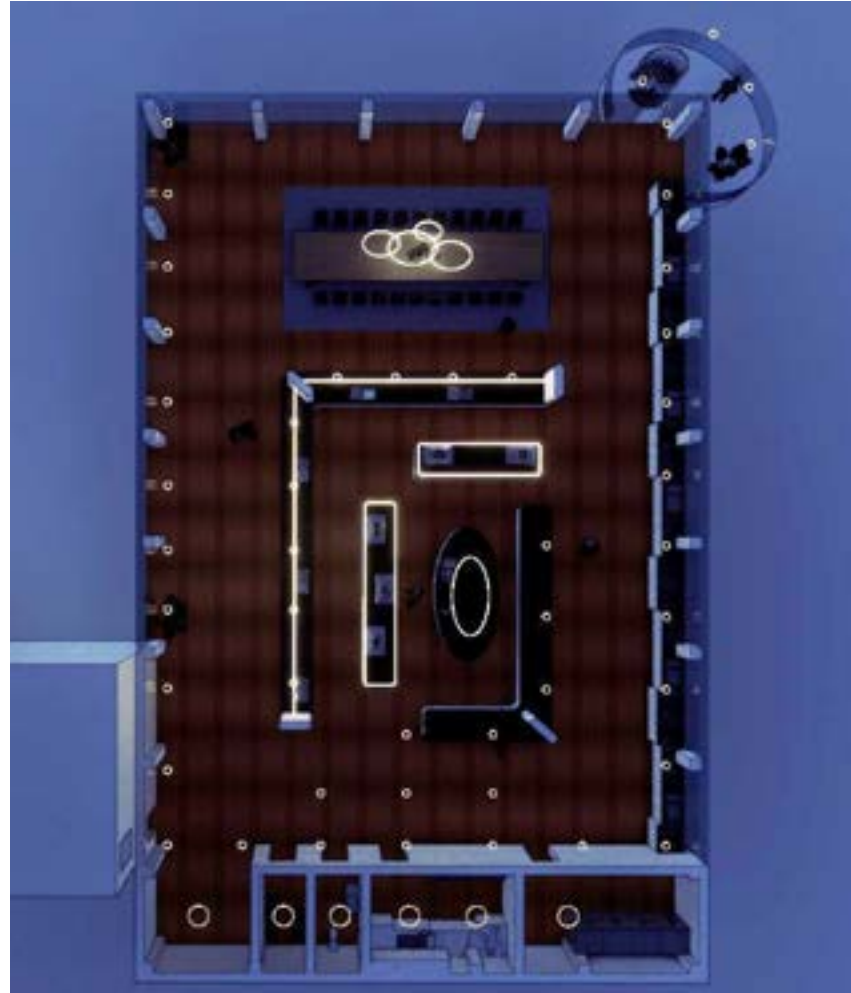
RENDERED MEZZANINE FLOOR PLAN



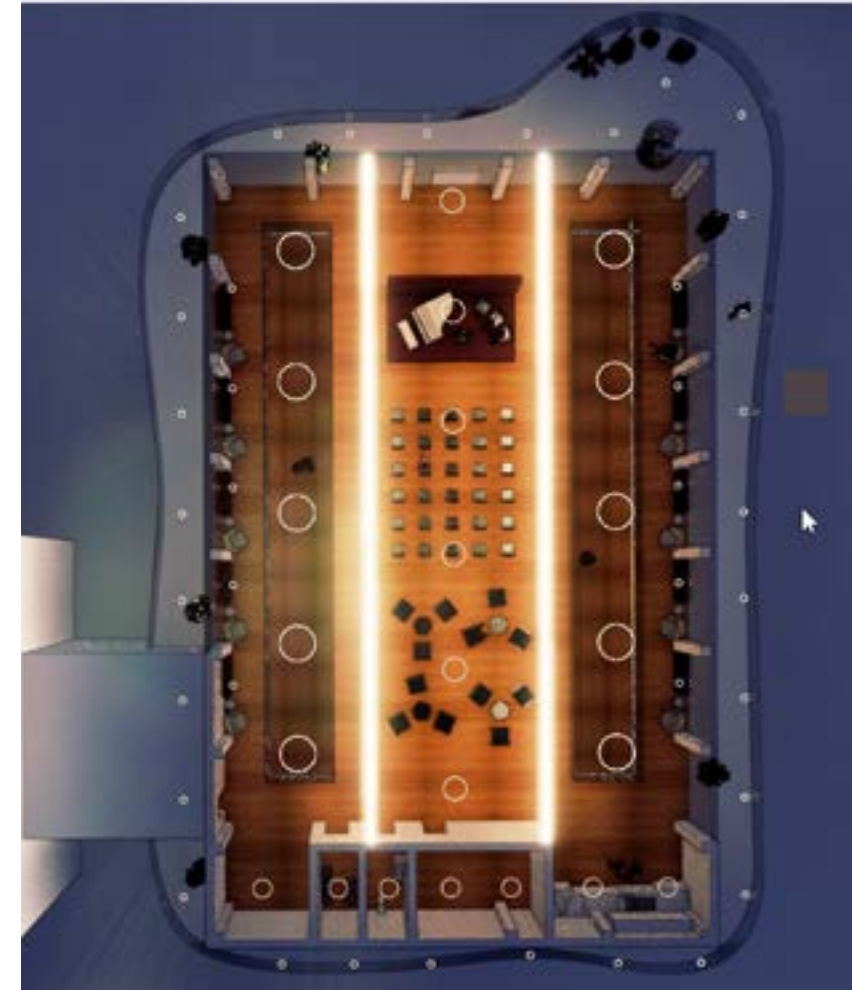
RENDERED FIRST FLOOR PLAN



PERSPECTIVE DRAWINGS AND LIGHTING  
Mezzanine Floor



First Floor





# COLOR POWER 07

## PROJECT BRIEF

By comparing the works of artists from different cultures, we explore colors and their influence on cultural interpretation.

## DESIGN STRATEGY

Mainly from the geometry, color, and three-dimensional or plane of the artwork to compare, understand the content that the artist wants to convey through his special technique. Finally, make a similar work of art based on my own understanding and knowledge learned.





Aaron Douglas  
American, 1899 - 1979

Aaron Douglas, widely acknowledged as one of the most accomplished and influential visual artists of the Harlem Renaissance, was born in Topeka, Kansas, on May 26, 1899.

Aaron Douglas pioneered the African-American modernist movement by combining aesthetic with ancient African traditional art. He set the stage for future African-American artists to utilize elements of African and African-American history alongside racial themes present in society.



1899



1927

God's Trombones was Johnson's masterwork and a breakthrough publication for Douglas. In his illustrations for this publication, and later in paintings and murals, Douglas drew upon his study of African art and his understanding of the intersection of cubism and art deco to create a style that soon became the visual signature of the Harlem Renaissance.



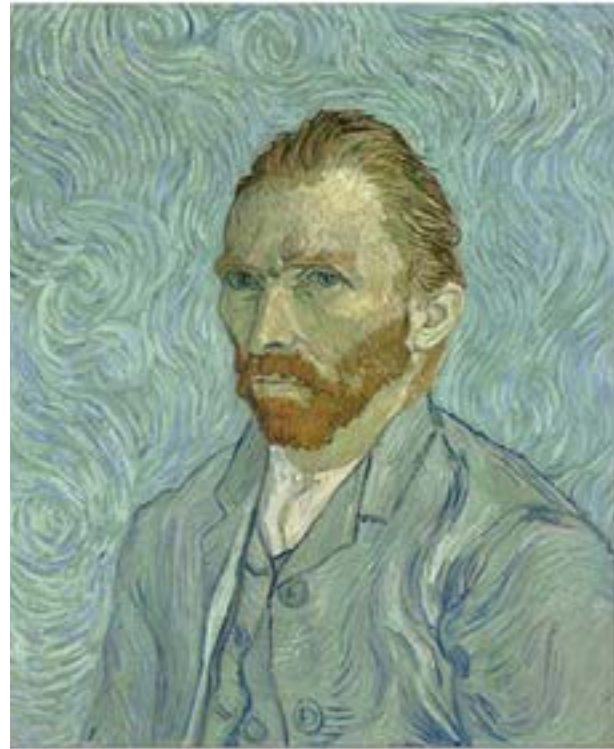
In 1936, Douglas was commissioned to create a series of murals for the Texas Centennial Exposition in Dallas. Installed in the elegant entrance lobby of the Hall of Negro Life, his four paintings charted the journey of African Americans from slavery to the present. Considered a leader of the Harlem Renaissance, the cultural phenomenon that promoted African and African American culture as a source of pride and inspiration, Douglas was an inspiring choice for the project.

1936



Into Bondage, 1936

1979



Vincent Willem van Gogh  
1853-1890

Vincent Willem van Gogh (30 March 1853 – 29 July 1890) was a Dutch post-impressionist painter who is among the most famous and influential figures in the history of Western art. His paintings include landscapes, still lifes, portraits and self-portraits, and are characterised by bold colours and dramatic, impulsive and expressive brushwork that contributed to the foundations of modern art.



1853 ————— Early Years 1881-1883 ————— The Middle Years: 1884-1887 ————— Latter Years: 1888 to 1890 ————— 1890

Vincent van Gogh's residence in The Hague during 1882 and 1883 proved to be a productive period in which he continued to hone his technique and explore similar yet fresh subject matter. During this time, he received his first commissions for several drawings of cityscapes in The Hague from an uncle who was also an art dealer.

His style changed immensely when he moved to Paris in 1886 and was greatly influenced by the work of the Impressionists and Neo-Impressionists. He began using a lighter palette of reds, yellows, oranges, greens, and blues, and experimented with the broken brush strokes of the Impressionists.

Van Gogh was also hugely influenced by Japanese prints and he painted dark outlines around objects, filling these in with areas of thick color.

Van Gogh started to imitate Gauguin's technique of painting from memory during this time which resulted in his paintings becoming more attractive and less realistic. Van Gogh's emerging style saw him emotionally reacting to subjects through his use of color and brush work. He deliberately used colors to capture mood, rather than using colors realistically.

## Aspiration, 1936



The five-pointed stars symbolize Texas—the Lone Star State—but also recall the North Star that guided escaped slaves to freedom before the

The shackled arms of slaves, rising from wavelike curves, evoke the transatlantic passage of slave ships.

This painting was created for the Texas Centennial of 1936, conveys Aaron Douglas's perception of a link between African/Egyptian and African American cultures. He depicts a historical progression from slavery to freedom, and a geographic progression from the agrarian slave or sharecropper labor of the South to the industrial labor of the North.

### Extraction & Color Ratio

Foreground



36%

Middle Ground



36%

Background



18%

## The Night Café, 1888



The painting was executed on industrial primed canvas of size 30 (French standard). It depicts the interior of the cafe, with a half-curtained doorway in the center background leading, presumably, to more private quarters. Five customers sit at tables along the walls to the left and right, and a waiter in a light coat, to one side of a billiard table near the center of the room, stands facing the viewer.

The five customers depicted in the scene have been described as "three drunks and derelicts in a large public room [...] huddled down in sleep or stupor." One scholar wrote, "The cafe was an all-night haunt of local down-and-outs and prostitutes, who are depicted slouched at tables and drinking together at the far end of the room."

### Extraction & Color Ratio

Background



30%

Middle Ground



20%

Foreground



50%

# COMPARISON

AARON DOUGLAS

Subtle gradations of color

Narrow range of tone

Two-dimensional

Concentric circles

Abstract

Silhouettes



Faceless human figures

Symbolic and general

Unity



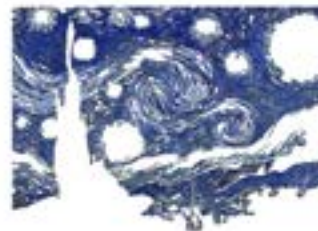
VINCENT VAN GOGH

Bold colours

Dramatic,

Impulsive

And expressive brushwork



Landscape

Imagination

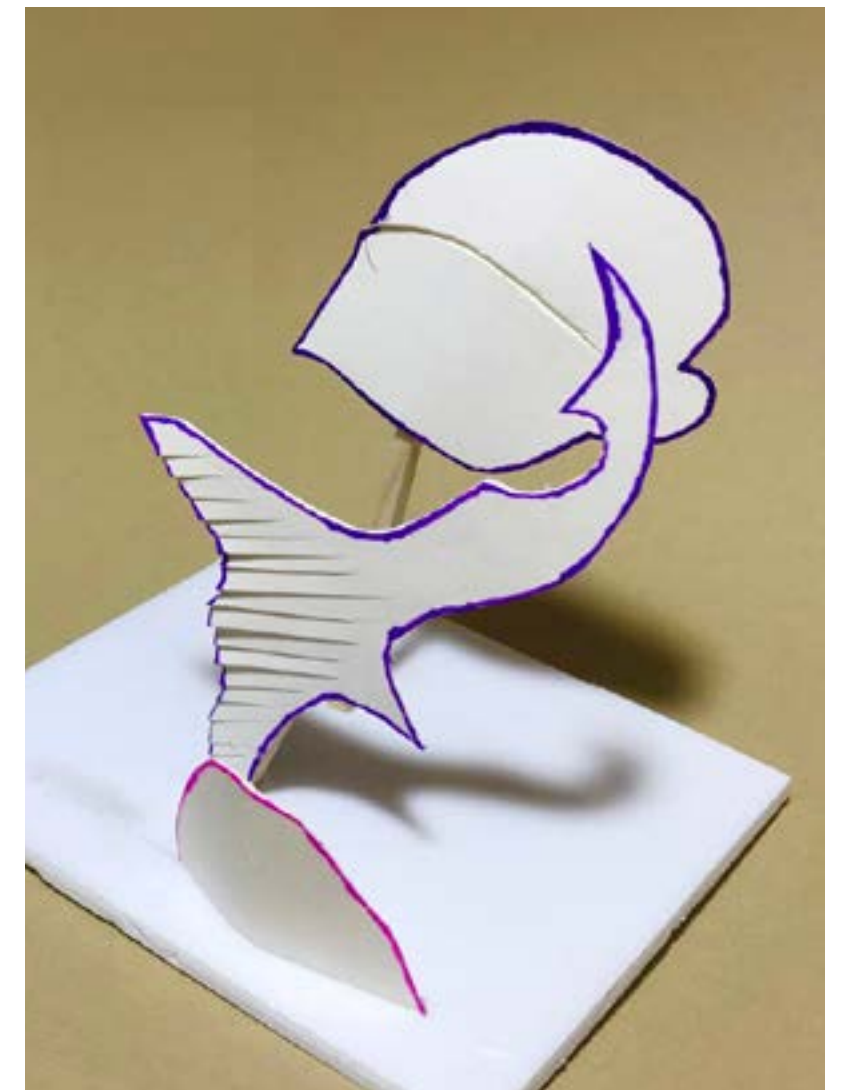
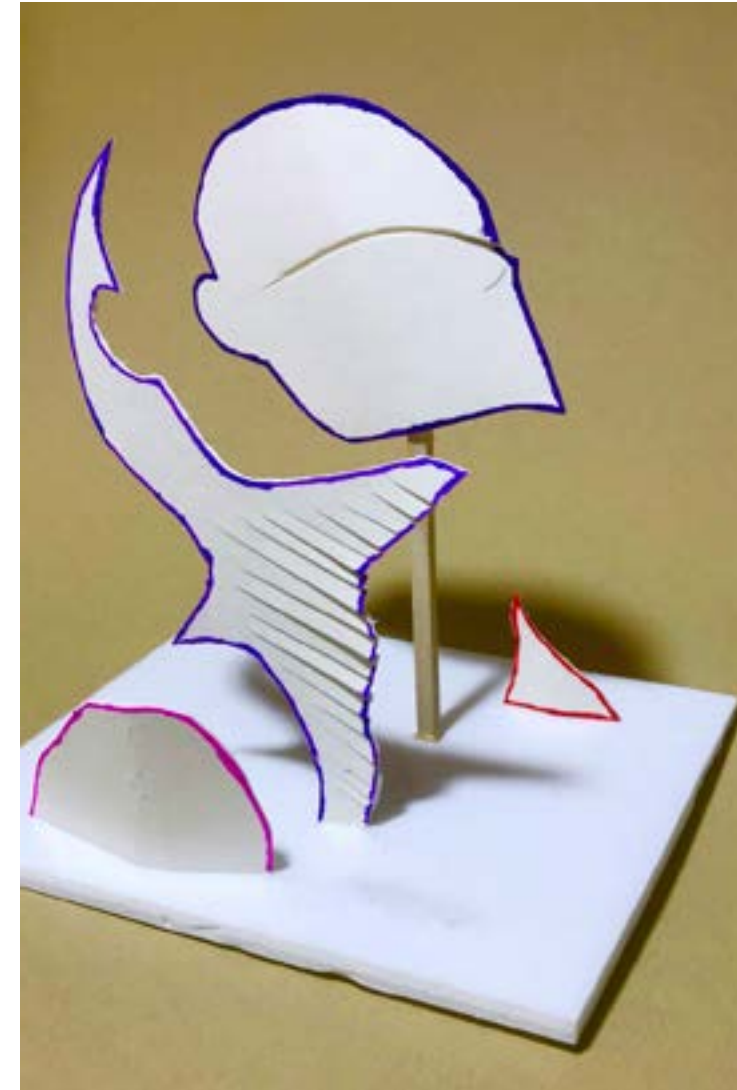


# 3D INTERPRETATION

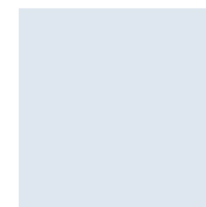
Symbolic & General

Silhouettes

Color gradient



COLOR PALETTE



LOGO



FRONT FOR DIFFERENT PARTS

**NUMBER**

Front: Georgia bold size: 60

**TITLE/TITLE AND HEADERS**

Front: Calibri regular and light size: 36

**SUBTITLE, LABELING**

Front: Calibri bold size: 18

Body Text, notes, statements

Front: Calibri regular size: 14

**Front: Georgia**

**Lorem Ipsum**

Lorem Ipsum

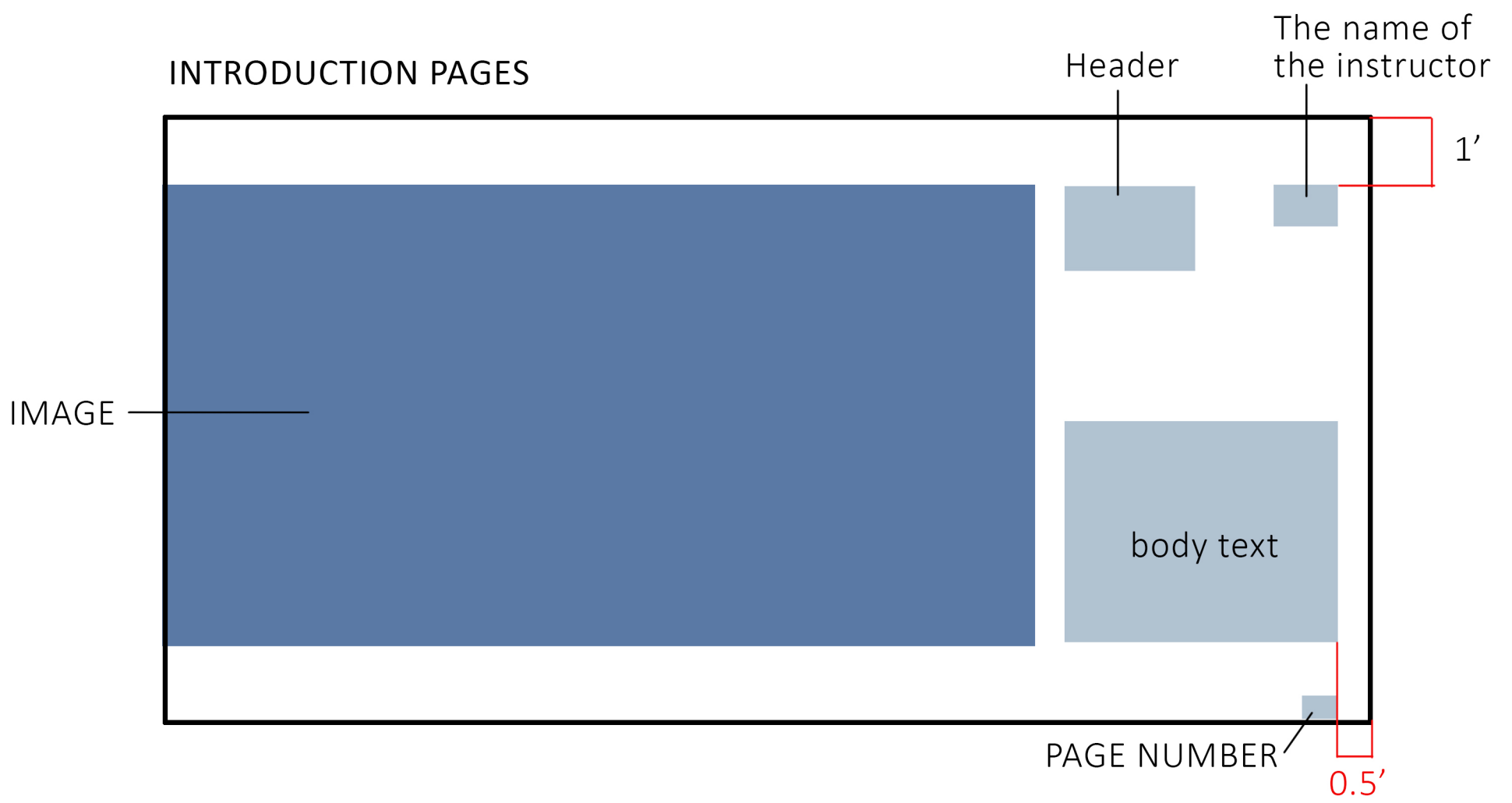
**Front: Calibri**

**Lorem Ipsum**

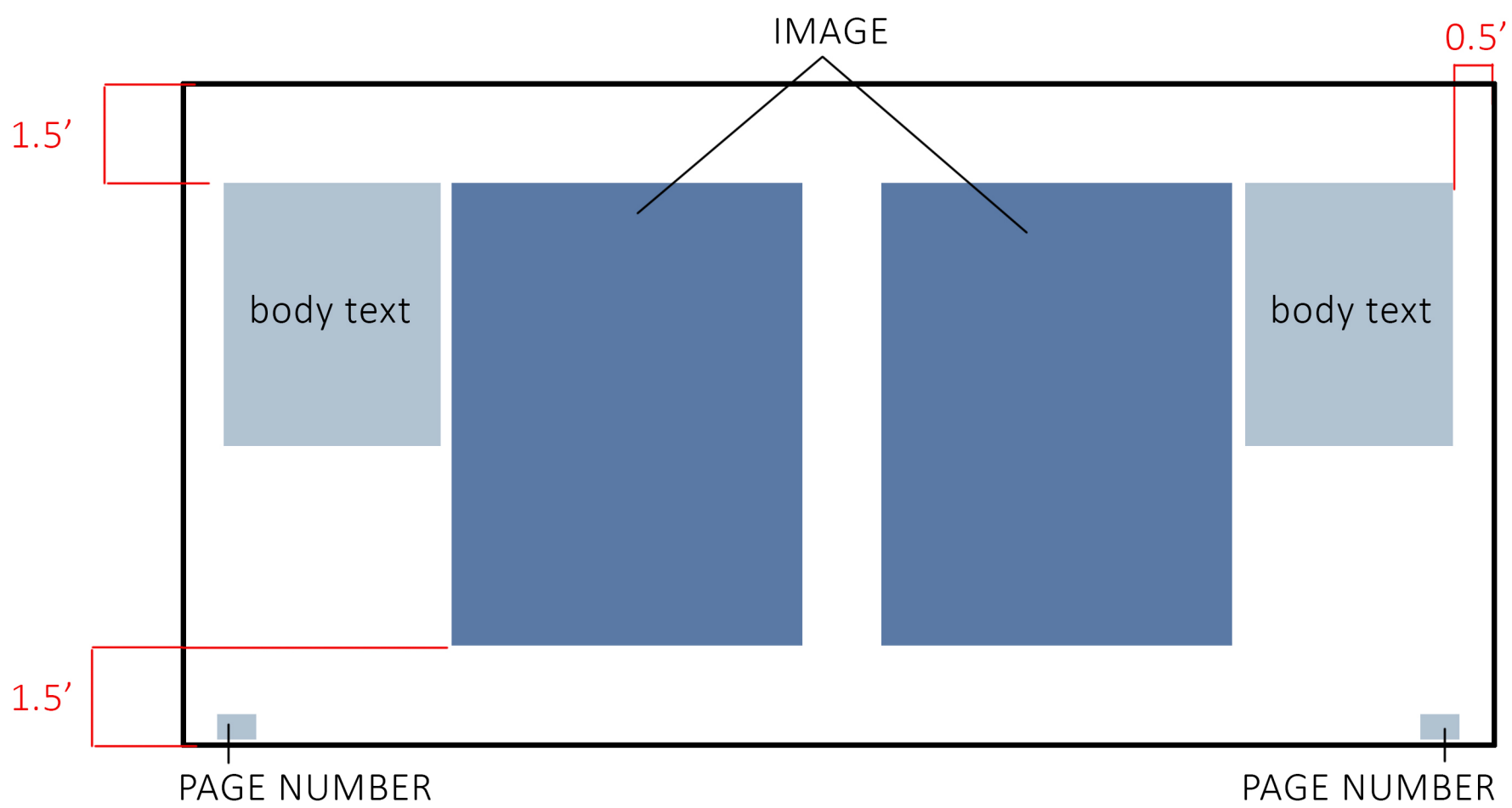
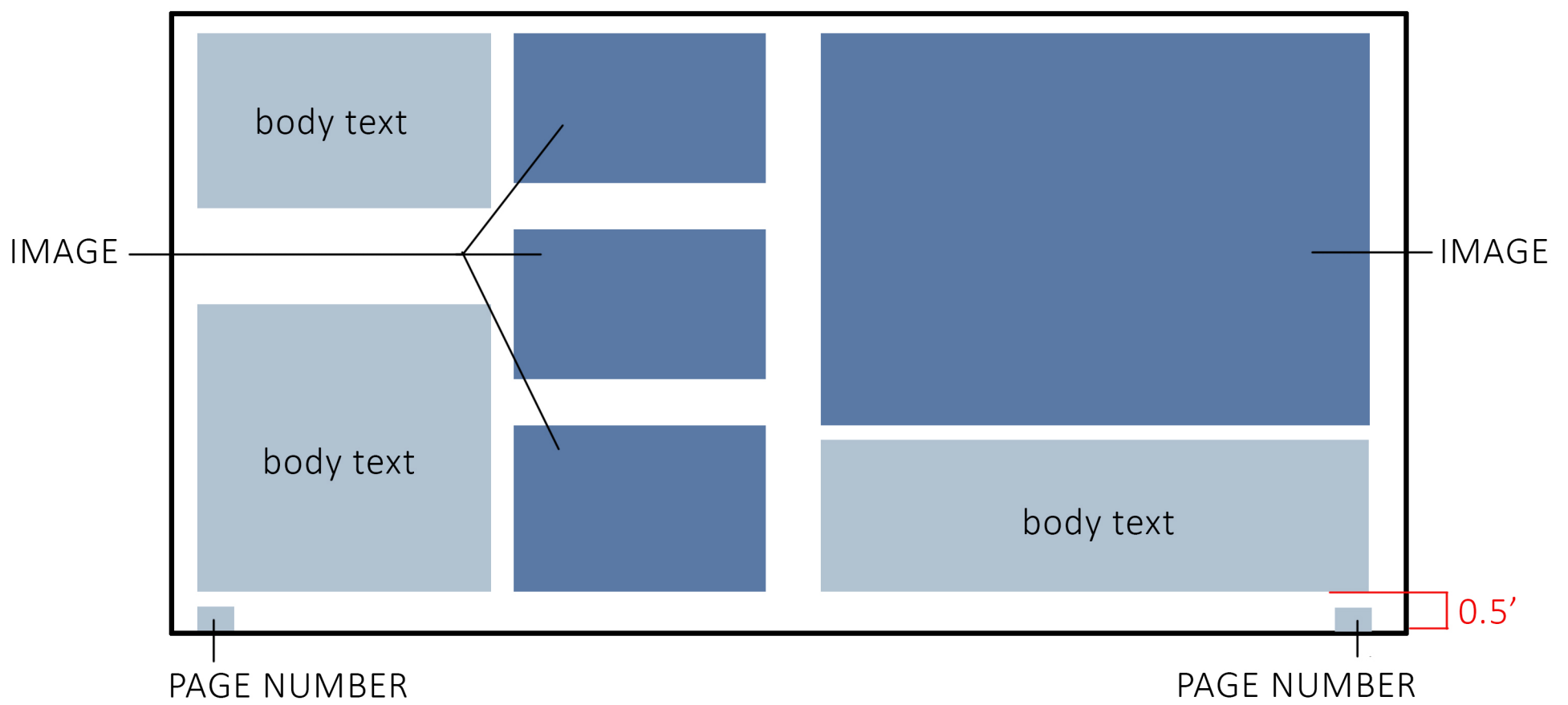
Lorem Ipsum

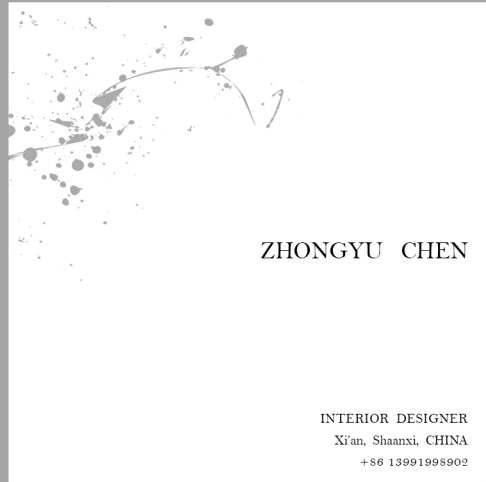
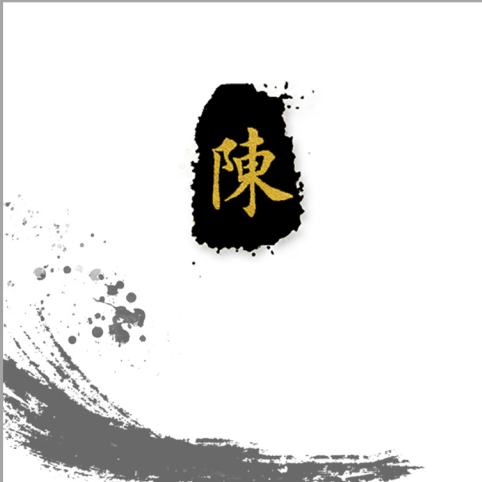
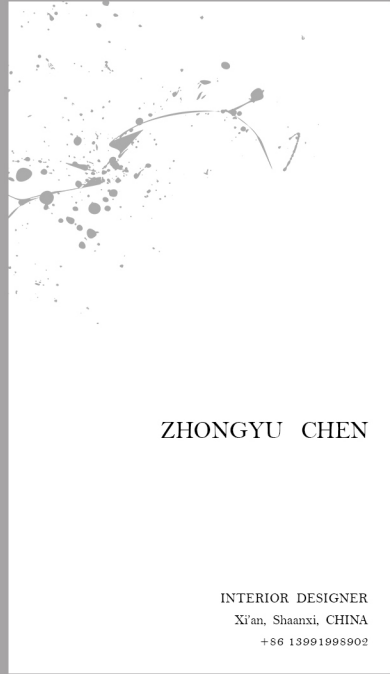
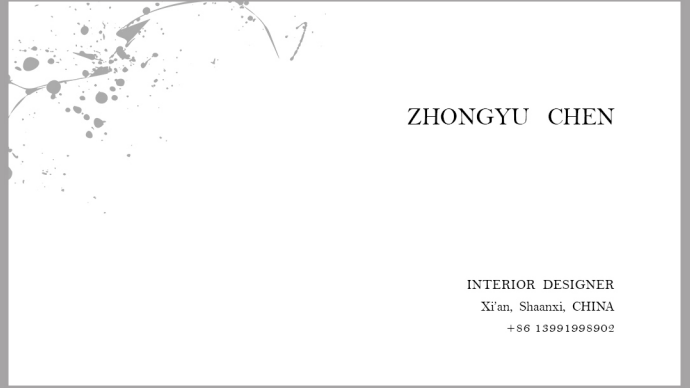
Lorem Ipsum

INTRODUCTION PAGES



DOCUMENTATION PAGES







# 陳

## Zhongyu Chen

Interior Designer  
Xi'an, China

Phone  
+86 13991998902

E-mail  
zchen51@pratt.edu

### SKILLS

Rhinoceros  
Enscape  
Sketchup  
AutoCAD  
Adobe Suite  
Microsoft Office  
Final Cut Pro  
Google Suite

lasercut  
3D Printing  
Model Making  
Wood Shop  
Hand Drafting

## EDUCATION

Pratt Institute  
Brooklyn, NY, USA  
Expected in 06/2021  
Bachelor of Fine Arts: Interior Design

Danish Institute of Study Abroad  
Copenhagen, Denmark  
01/2020 to 05/2020  
Study Abroad Program: Interior Architecture

---

## WORK EXPERIENCE

RUIJIE furniture company  
Shaanxi, China  
07/2019 to 08/2019  
06/2020 to 08/2020

### CONTENT OF WORK

Help the company research new furniture trends, light luxury, and find the future development direction of the market.

I went to Guangzhou in 2020 to participate in CIFF, China Furniture Fair, with the company's employees to learn about newly developed home furnishing products and newly generated interior design concepts.

Site research  
Material sourcing  
3D and physical model making  
Perspective rendering

---

## INTERESTS

Video clip - vlog production and movie editing  
FPV Drone - aerial photography and video recording

---

## LANGUAGES

English - able to communicate and write fluently  
Mandarin

陳

Zhongyu Chen

+86 13991998902 | zchen51@pratt.edu

# IFETAYO CULTURAL ARTS CENTER

Dance center

507 Flatbush Avenue, Brooklyn, New York

The project solved contemporary social and cultural problems through the design of the dance school. Enhance the cultural identity of African Americans in Brooklyn and add office space for Brooklyn's cultural and educational organization Ifetayo.



Atrium- space for gathering and meeting

Materiality

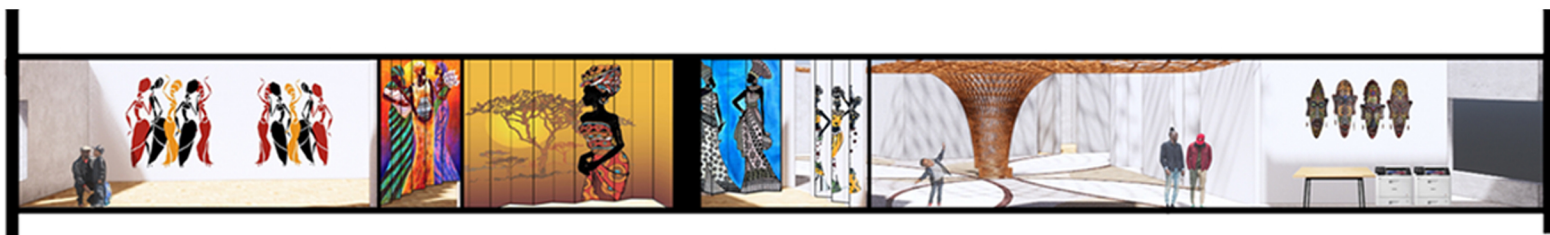


Kitchen

- 01- Steel
- 02- Wood
- 03- Concrete
- 04- Terrazzo
- 05- African Fabric



creating a vibrant indoor environment, so i will use some brightly colored materials, such as red, to stimulate people's vitality. combining traditional african materials and patterns.



Section - looking north

# 陳

Zhongyu Chen

+86 13991998902 | zchen51@pratt.edu

## BOOK FOREST

Brooklyn public Library

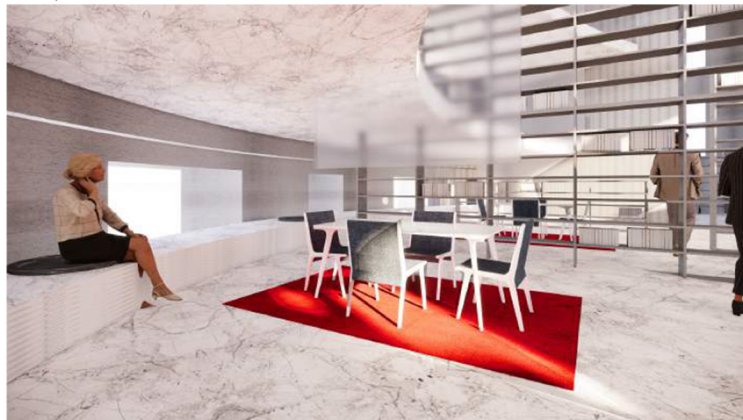
25 4th Avenue, Brooklyn, New York

The project solved contemporary social and cultural problems through the design of the dance school. Enhance the cultural identity of African Americans in Brooklyn and add office space for Brooklyn's cultural and educational organization Ifetayo. The site is a three-story building.



Perspective- on the second floor

Concept collage



Reading area- on the first floor



Materiality



Concrete



Marble



Grey Wood

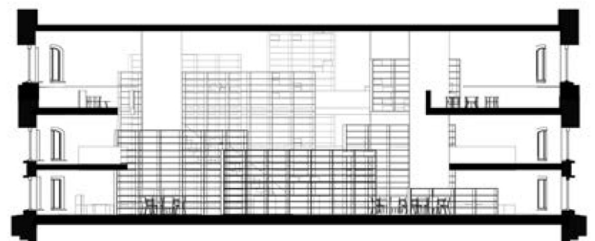


Oak

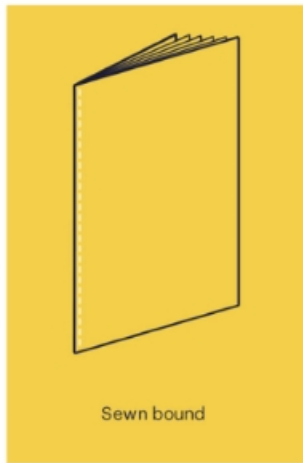


Bar area- on the first floor

Section

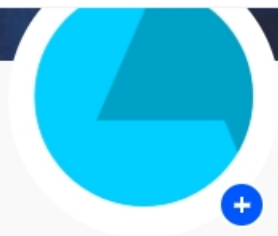


## Saddle sewn binding



Saddle Sewn binding is a book binding technique achieved by sewing together landscape folded pages with a cover into a portrait book. The stitching itself is done on an industrial sewing machine and lies on the spine of the book.

<http://texasbindery.com/SingerSewn/index.html>



## Zhongyu Chen

China

Info

**Work**

Moodboards

Appreciations

Insights

Drafts

**Edit Your Profile**



### JAZZ TIME 06

PROJECT BRIEF  
Design a culture h  
providing activit  
resident, people  
DESIGN STRATEGI  
The program is de



### NATUR SCHOC 01

PROJECT BRIEF  
The aim of this pro  
of rural and urban  
a public school w  
children in X'an, C  
DESIGN STRATEGI  
The main educat  
and shared educat



## NATUR SCHOC 01

**PROJECT BRIEF**  
The aim of this project is to design a public school for children in Kfar, C

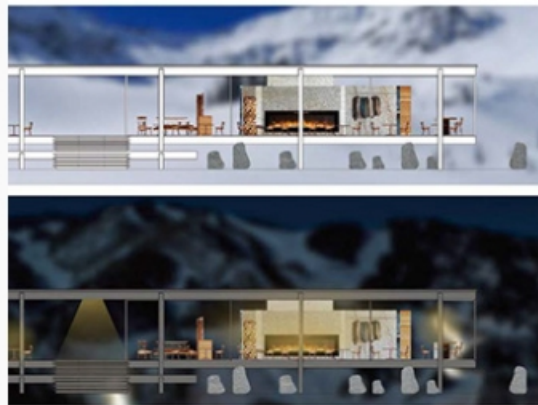
**DESIGN STRATEGY**  
The main educational and shared educational elements into the oriented education, the connection by cultivation of peers advanced urban, it by combining traditional education models.



## KEEP DANCE 02

**PROJECT BRIEF**  
Design a dance studio in Brooklyn, and into to give users a sense

**DESIGN STRATEGY**  
Bring different design, such as dance, represent an important place colors and fabrics activities around bringing them into. Add African masks enhance cultural



## FIRE+ CHARC CAFE 03

**PROJECT BRIEF**  
Set up a cafe under place for skiers.

**DESIGN STRATEGY**  
Starting from the idea of skiers, stores allow users to rest by warmness provided by Argentinean. Outside privacy of users, it feel safe.



## BOOK FOREST 04

**PROJECT BRIEF**  
Redesign the library and comfort of it

**DESIGN STRATEGY**  
Arranging the library to feel like a higher level. It with the service more viewing an separated from it ensuring a good



## FLOAT 05

**PROJECT BRIEF**  
Design a four-story concept and show

**DESIGN STRATEGY**  
Starting from the innovative ideas it creates a feeling of mystery which an upstairs to find out "phantom" through



## JAZZ TIME 06

**PROJECT BRIEF**  
Design a culture by providing services residents, people

**DESIGN STRATEGY**  
The project is to

