

INTERIOR DESIGN

PORTFOLIO

KAREN RWAMAKUBA

PRATT INSTITUTE

TABLE OF CONTENTS

PROJECTS

1 RESIDENTIAL

PROJECT 1- FARNSWORTH HOUSE
LIVE/WORK RESIDENCE



11 COMMERCIAL

PROJECT 2- OFFICE PROJECT: DESIGN WITHIN REACH STORE
BE SIDE MUSIC COMPANY



26 HOSPITALITY

Project 3- ATLANTIC AVE RESTAURANT
525 ATLANTIC AVE



FARNSWORTH HOUSE

LIFE/WORK RESIDENCE





CLIENT OWNED ARTWORK



Marilyn Monroe
Andy Warhol 1964

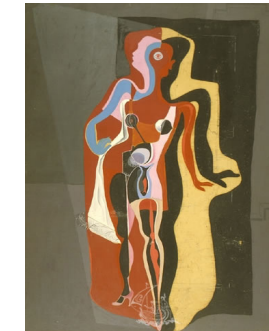


Figure. Barcelona Mannequin
Salvador Dalí 1926
Oil on canvas



Queen Ntombi of Swaziland
Andy Warhol 1985
Screenprint



Nobility of Time
Salvador Dalí 1984
Bronze



Guitar
Pablo Picasso 1914
Cardboard



Al Cerchio - Ballerina 2018
Damiano Taurino
Woodcarving

Client Descriptions:

Annabelle Thompson

Age: 27

Gender: Female

Physically Attributes: 5'8" Curly hair, Brown eyes,

Personality: Outgoing, social and private

Occupancy: Artist

Geography: Barcelona, Spain

The client will live in a live work space, that provides flexibility in turning a studio space into a exhibition space, and provide areas appropriate to hosting guests in an intimate setting, yet private areas will remain private. The client's love for food gastronomy, celebrating different vernacular languages, and local and art cultures.

IT IS ESSENTIAL FOR THE CLIENT TO HAVE A LIVING ROOM AND DINING AREA THAT IS AN INTIMATE AND WELCOMING SETTING TO ACCOMMODATE TO HER GUESTS, WHILE ALSO BEING A SPACE FOR HER TO LOUNGE AND NAVIGATE FREELY WHEN SHE IS NOT WORKING.



CONCEPT MODEL

The concept model plays with volume, transparency or opaquity of private spaces through the use of corrugated sheets as a representation of glass. The painting is used as reference of moving from public to private spaces.

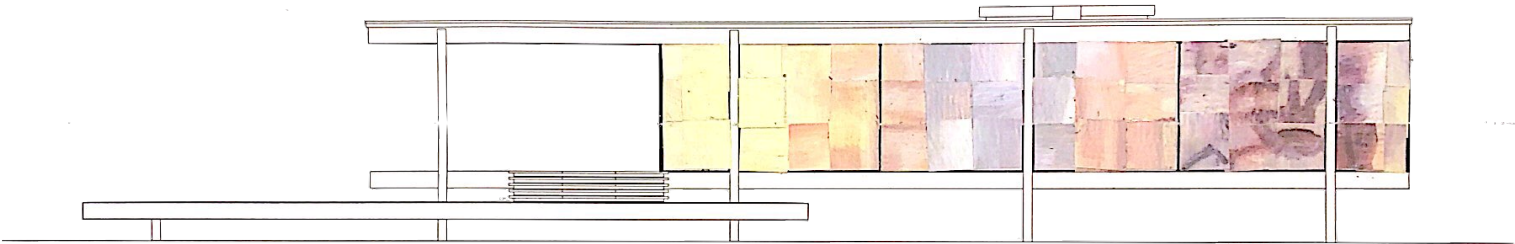


COLOR SEQUENCE



PAINTING INSPIRATION & HISTOGRAM

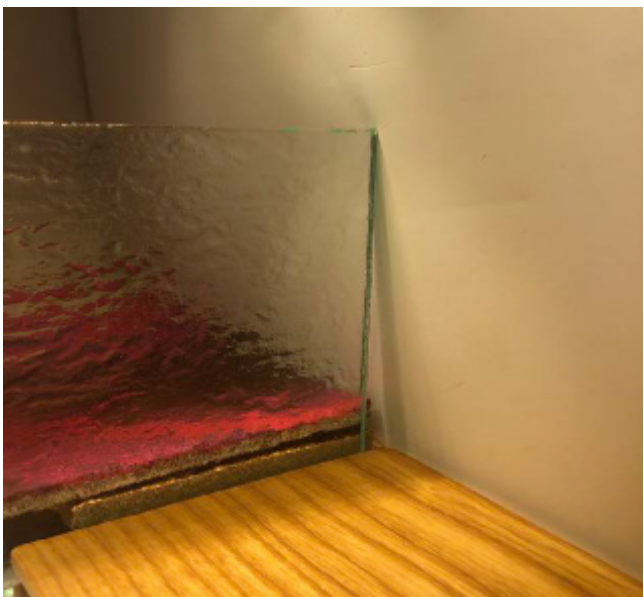
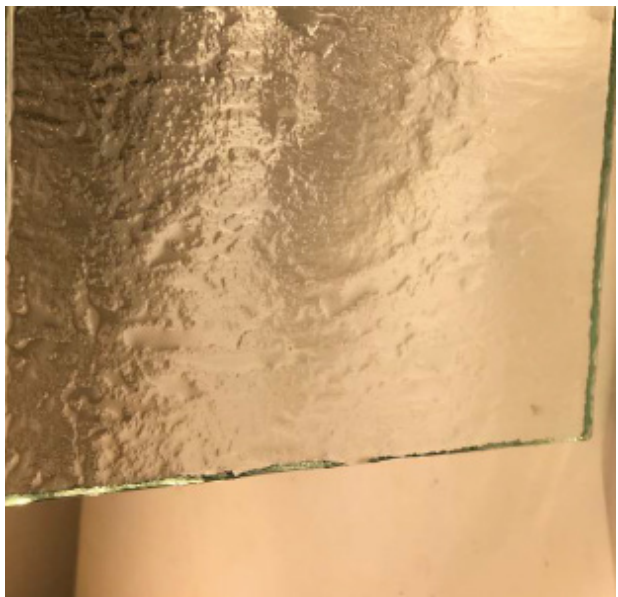
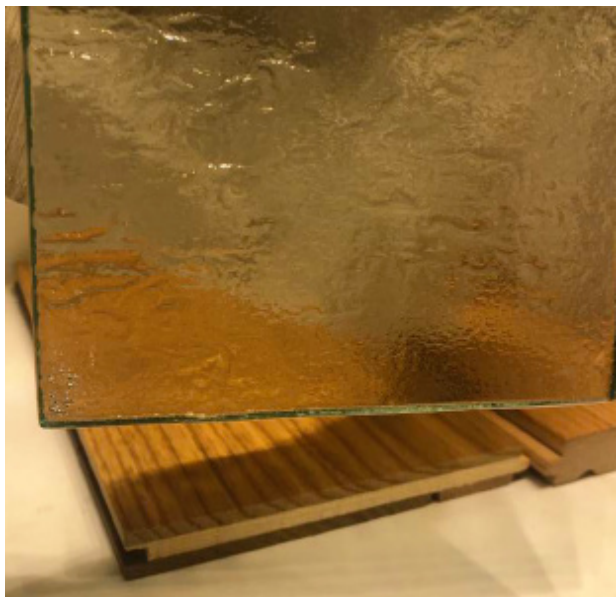
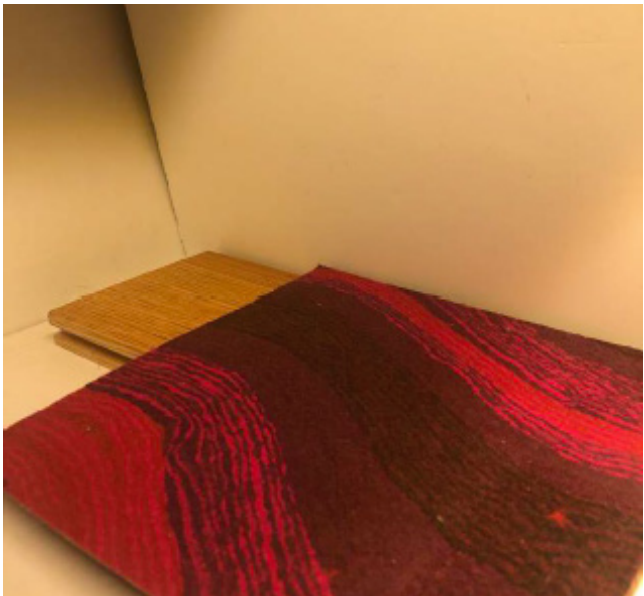
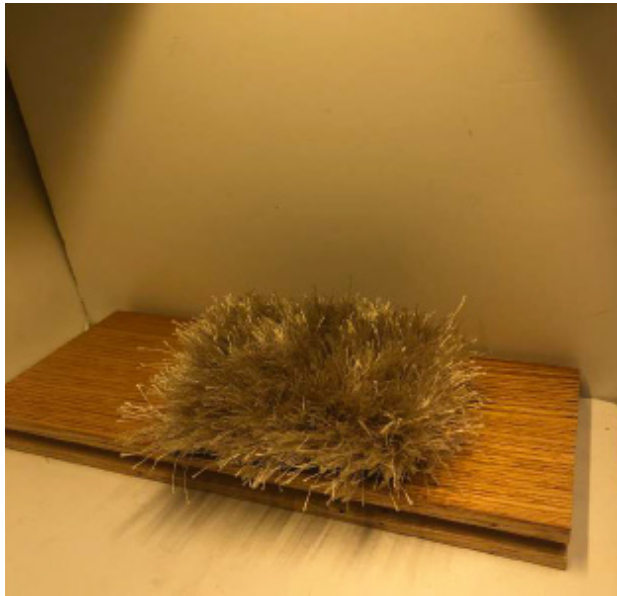
“Kids at Sunset Beach” By Kim Stenberg
I was inspired by this rich, impressionistic style oil painting by Stenberg due to its quality. Stenberg is able to capture volume in the strokes in the water and use of different hues and use warmth and cool tones well.



THIS WORK GREATLY DISPLAYS THE VERSATILITY OF THE CLIENT'S STUDIO EXPANDING INTO FOR THAN A LIVE WORK SPACE. IT INTRODUCES AN EXHIBITION AND WORKSPACE OPPORTUNITY FOR CLIENTS AND GUESTS TO TAKE PART IN WHILE ALSO BEING THE CLIENTS PERSONAL OFFICE. DEPENDING ON WHAT THE CLIENTS NEED FOR PRIVACY SHE HAS THE OPTION OF GLASS PARTITIONS, SHEER CURTAINS WITH TEXTILE DRAPERY AND ROLLER SOLAR SHADES.



LIGHT RIG TEST ON MATERIAL SELECTIONS



MATERIAL SELECTION CONCEPT

The idea of putting these materials together is to ultimately create intimacy and privacy in the space. The warmth of some of the materials are used to create warmth in the space, meanwhile maintaining neutral colors to help open the space. The glass is used as one of the materials to isolate space with its opaquity and texture. The textile drapery and curtains are used to create intimacy and privacy dependent on what the client needs in the moment. The carpet plays as one of the most intimate materials for the clients use. The way the light hits the carpet makes it welcoming, soft, and comforting for the clients experience in the space. The way the light hits on these fabrics makes a big differences as to how transparent or opaque it will appear in the space. The wood absorbs the light without giving too much of a reflection or glossiness. The material selections are used in to help create harmony in the space without overcomplicating the space.

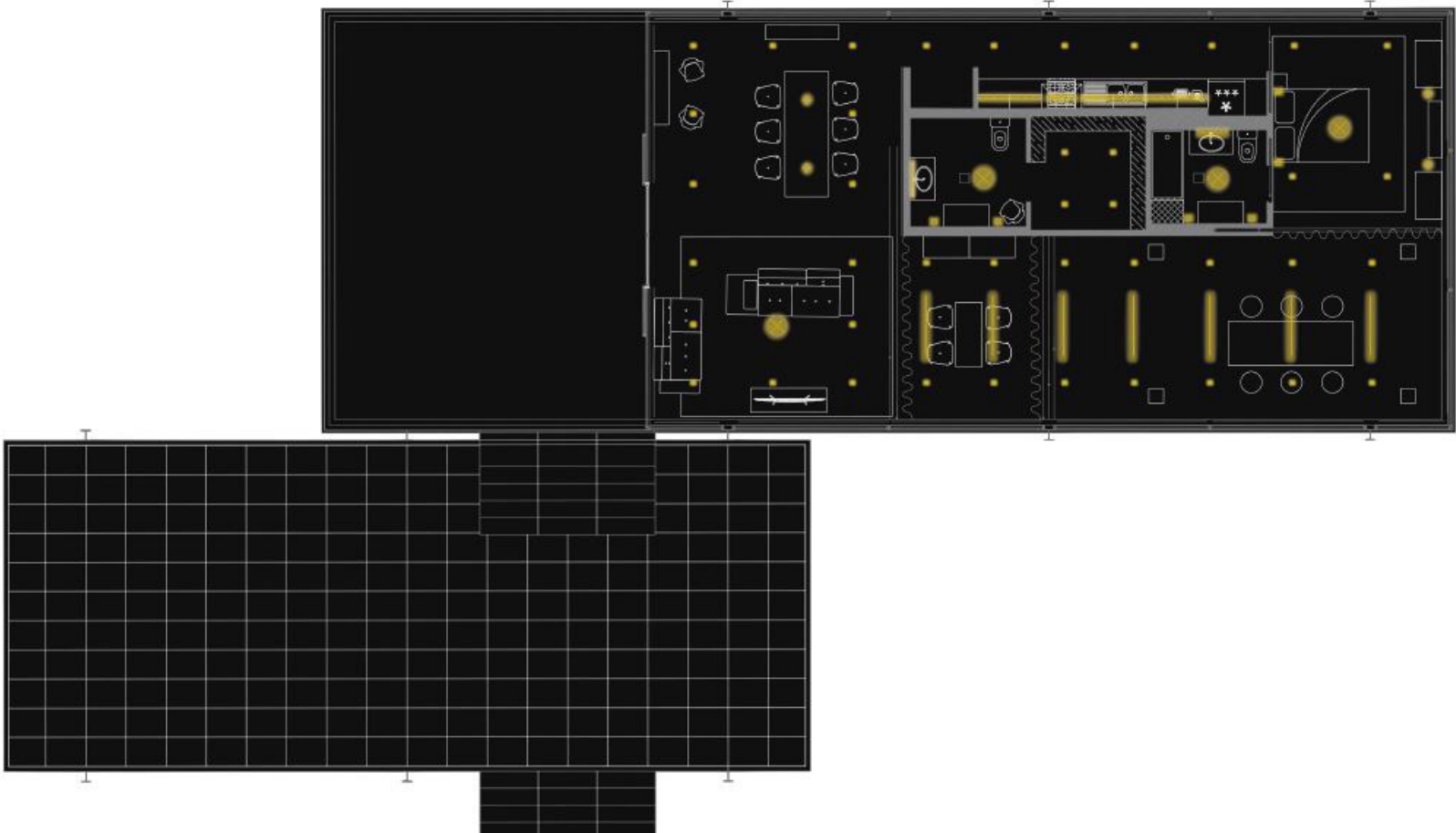


MATERIALS BY AREAS



FURNITURE SCHEDULE	
BS-01	Tabouret Haut Bar Stool
C-01	Limited Edition Bliss - Carpet
C-02	Alchemy Silk & Wool Rug
CH-01	HAL Leather Wood Chair
CH-02	Organic Chair
CR-01	Knoll Credenza Two Position
CR-02	Pixel Console
DR-01	Farmhouse Tallboy Dresser
DR-02	Farmhouse Extra Wide Dresser
S-01	Polder Sofa
T-01	Em Table

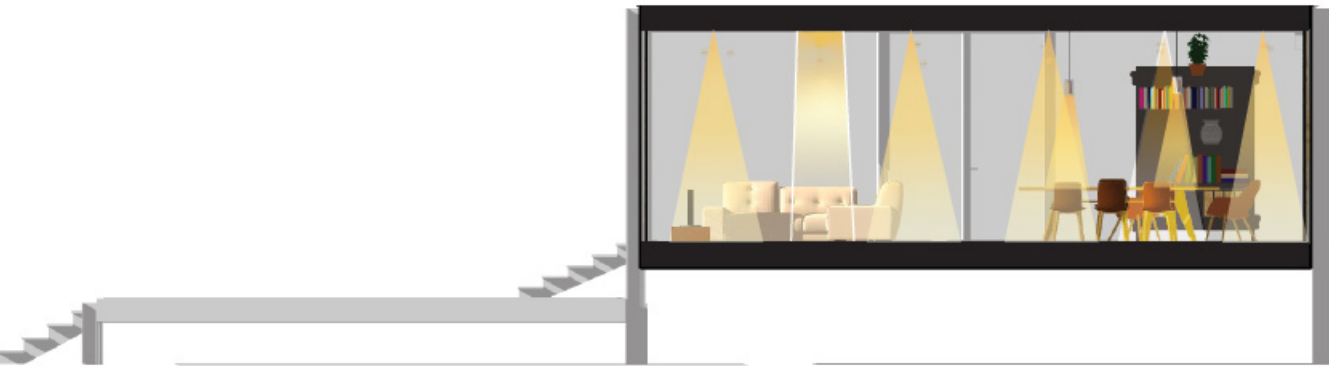
RENDERED LIGHTING PLAN



CODED LIGHTING PLAN



LIGHTING SECTION



EAST ELEVATION SECTION CUT



WEST ELEVATION SECTION CUT

NORTH ELEVATION SECTION CUT



NORTH ELEVATION



SOUTH ELEVATION



THE CLIENT'S BEDROOM SHOWCASES THE FALL TERRAIN BEING INTEGRATED WITH THE USE OF MATERIALITY AND PALETTE IN THE INTERIOR SPACE TO CREATE A WARM, INTIMATE AMBIANCE. THE USE OF A NATURAL COLOR PALETTE AND MATERIAL OPENS UP THE SPACE TO CREATE INTIMACY AND A COMFORTABLE SANCTUARY FOR THE CLIENT.



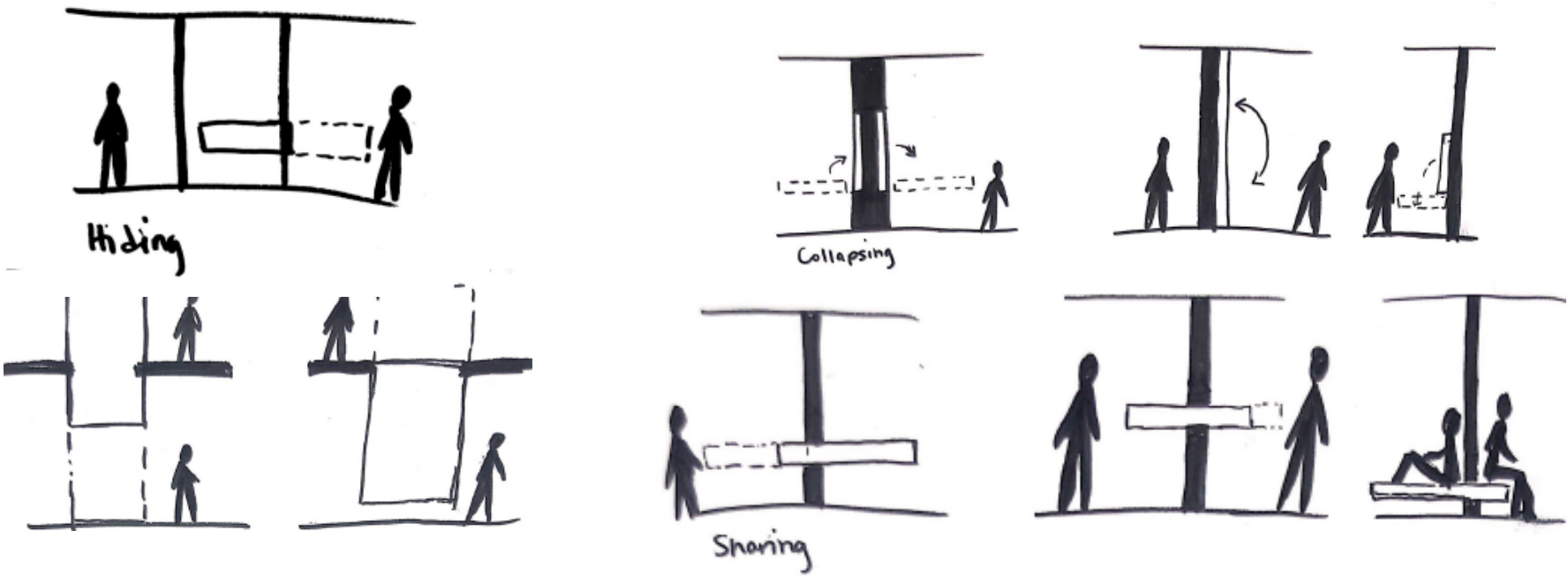
OFFICE PROJECT - DESIGN WITHIN REACH BUILDING

BE SIDE MUSIC COMPANY

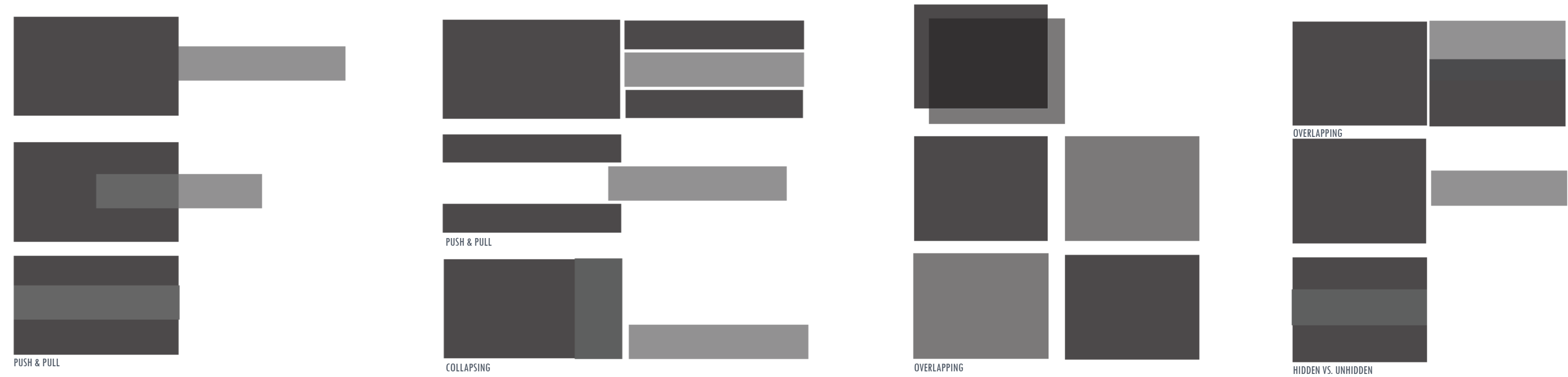


CONCEPT STATEMENT

I want to create a space that utilizes aspects of hoteling by focusing making the interior multi-functional in its use of its furniture system and wall condition. While providing this flexibility I seek to also be able to maintain privacy for other private offices spaces and refuge for employees and clients.

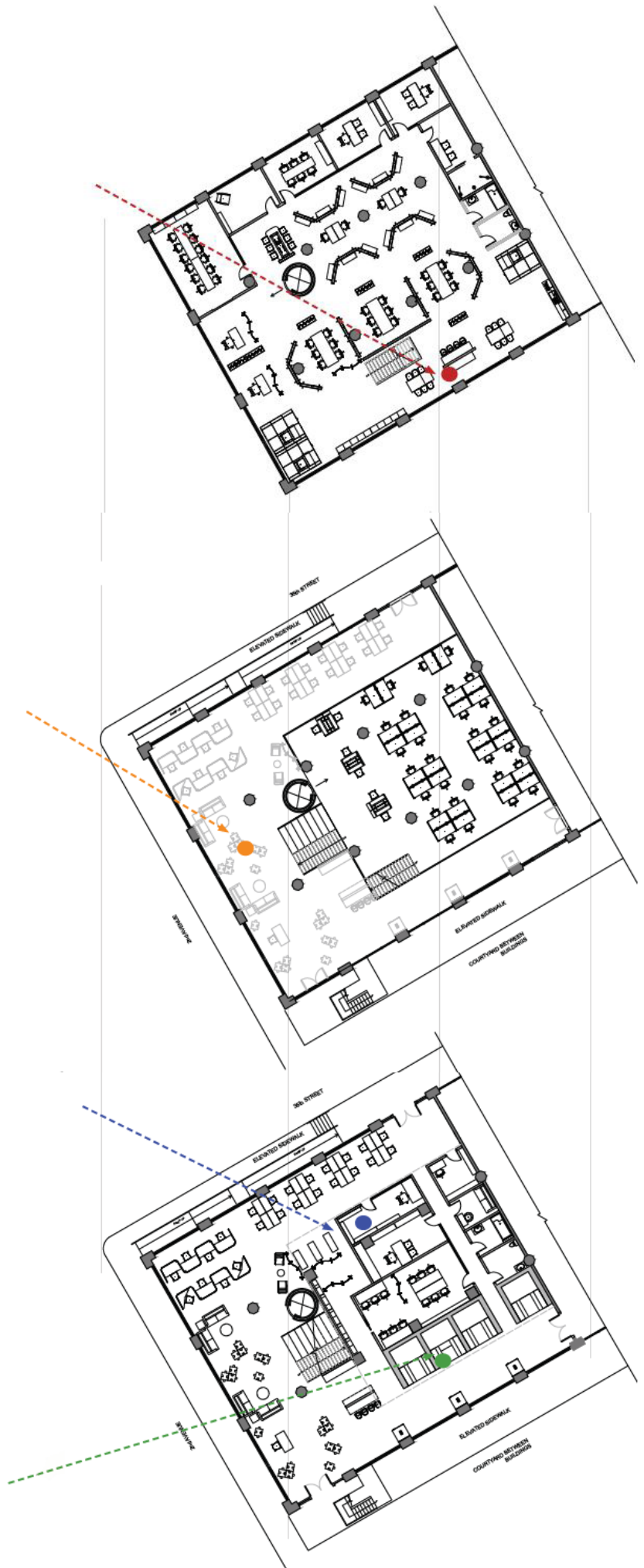
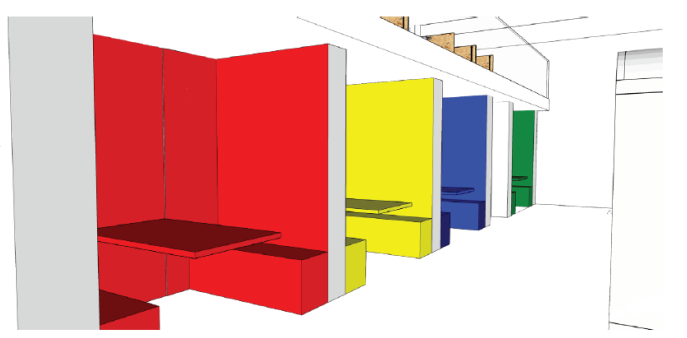
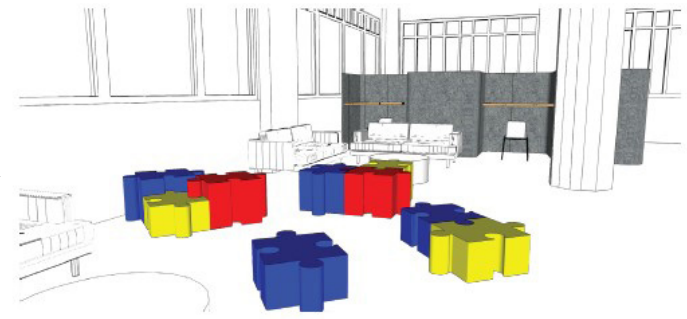
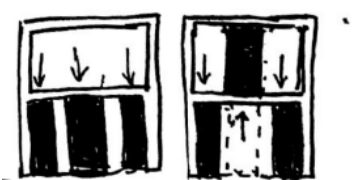
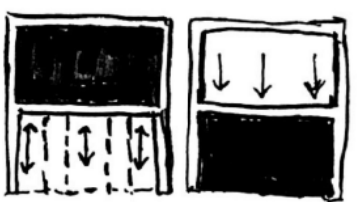
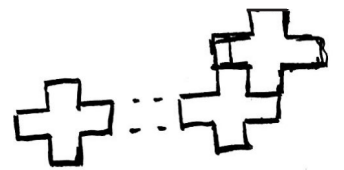
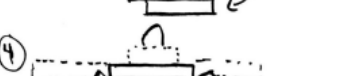
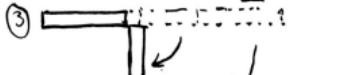
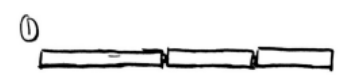
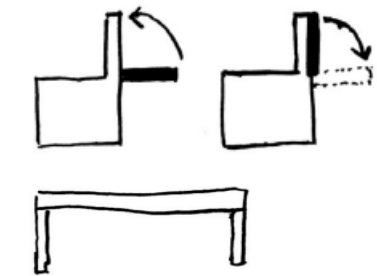


CONCEPT DIAGRAM



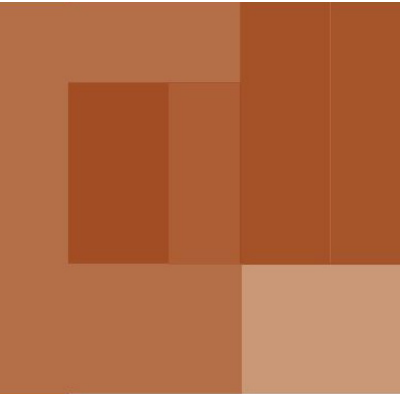
MULTIFUNCTIONAL FURNITURE SYSTEM

PERSPECTIVE
DIAGRAMS &
COLLAGE



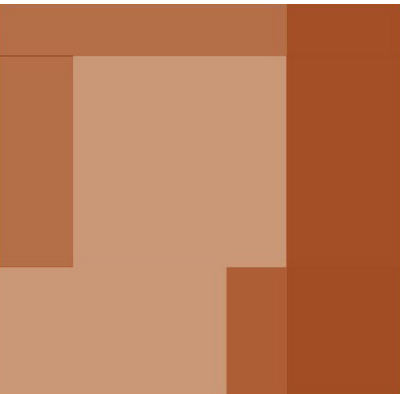
GROUND FLOOR PLAN

SECOND FLOOR PLAN- CODED DIAGRAM



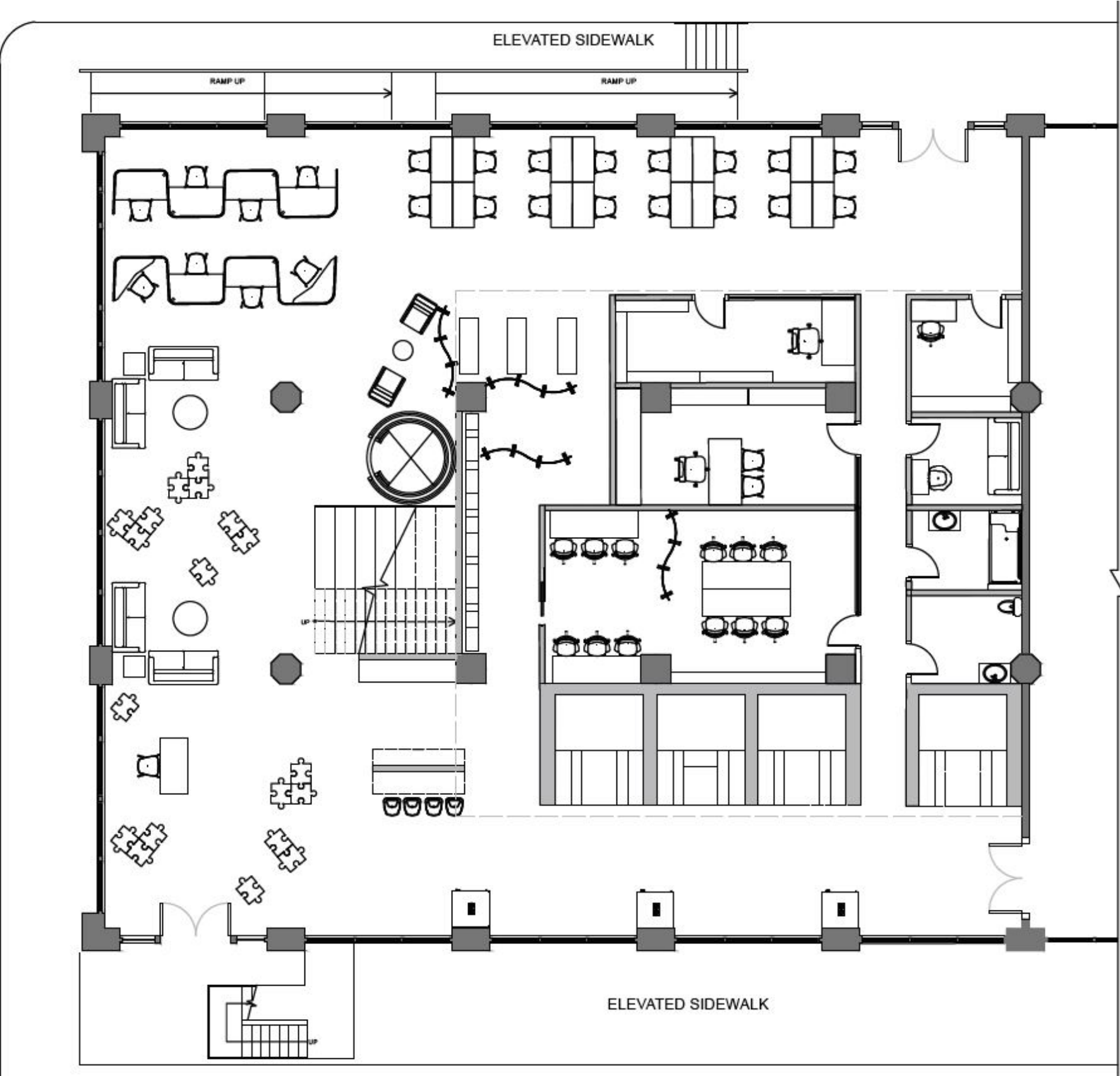
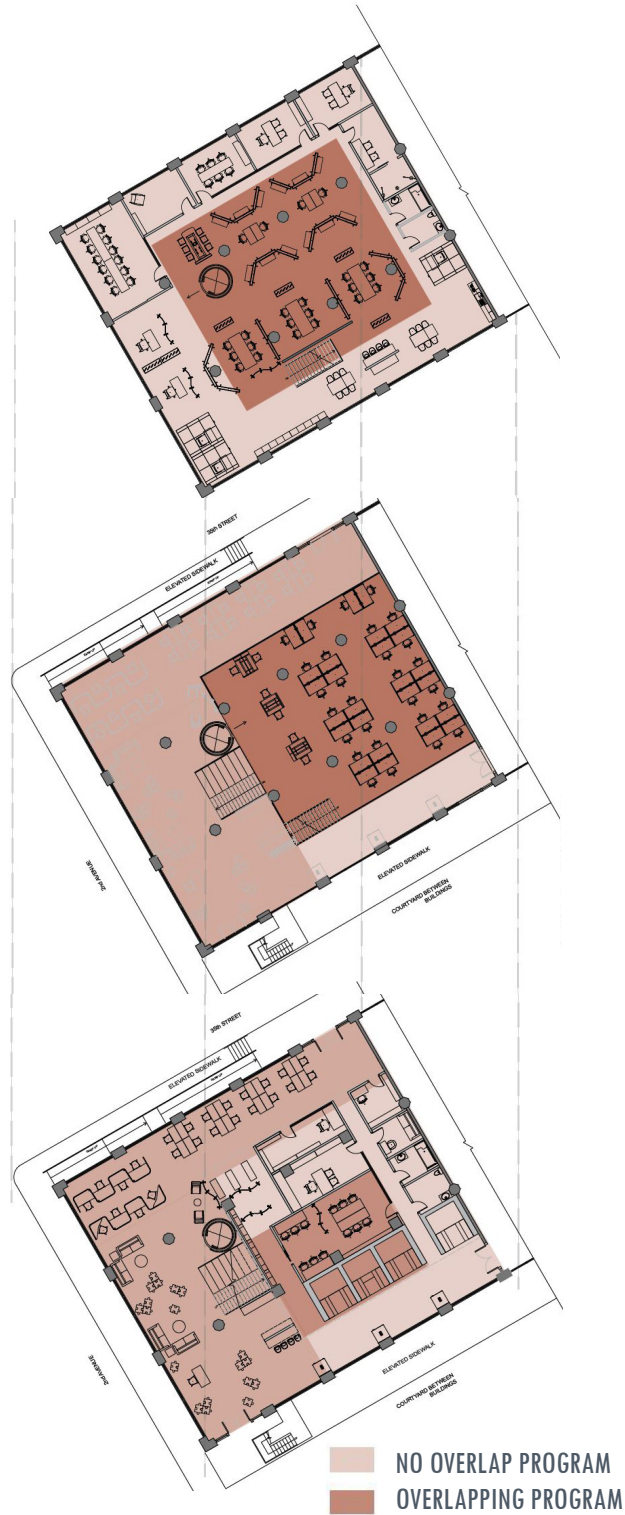
- PUBLIC
- SEMI-PRIVATE
- PRIVATE

GROUND FLOOR PLAN- CODED DIAGRAM



- PUBLIC
- SEMI-PRIVATE
- PRIVATE

OVERLAPPING PROGRAM DIAGRAMS

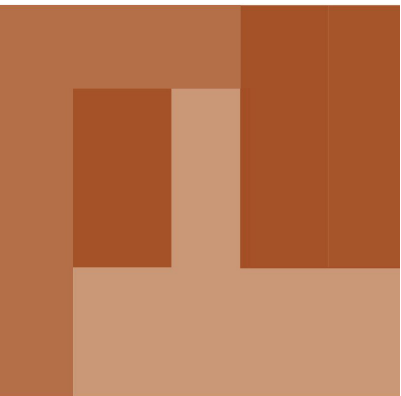


THE MUSIC OFFICE SPACE OFFERS A COLORFUL ARRAY OF NICHEs FOR CLIENTS AND GUESTS TO HAVE PRIVACY WITHIN THE RECEPTION AREA. THE NICHEs ARE PART OF THE MULTI-FUNCTIONAL FURNITURE SYSTEMS THAT ALLOWS FOR THE WALL CONDITIONS, TABLE AND BENCHES TO HAVE A PUSH AND PULL EFFECT TO CREATE UNIQUE OPPORTUNITY TO GATHER AND SOCIALIZE IN THEM TOO.



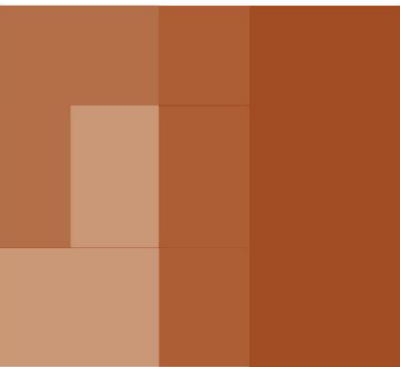
MEZZANINE FLOOR PLAN

SECOND FLOOR PLAN- CODED DIAGRAM



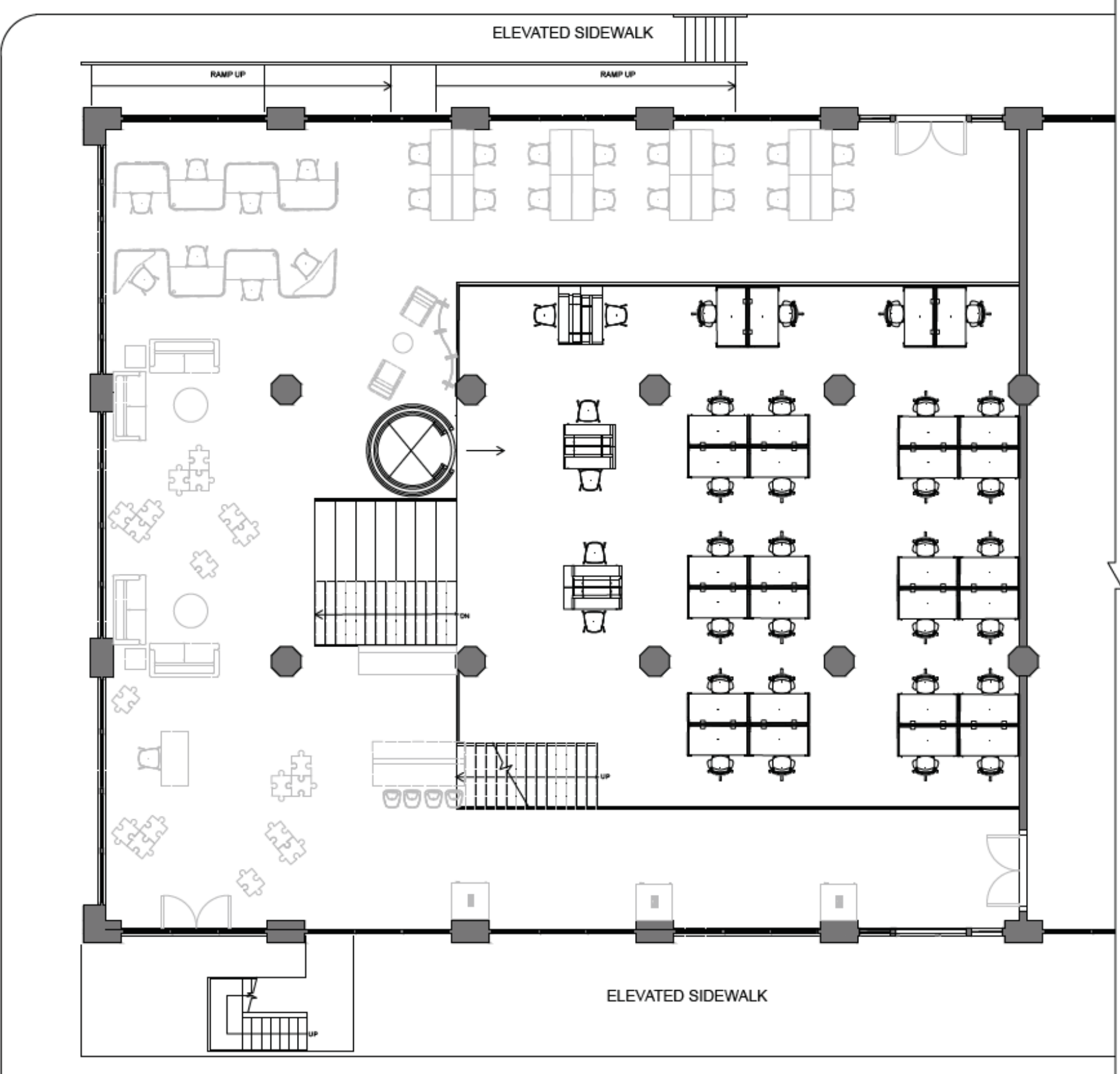
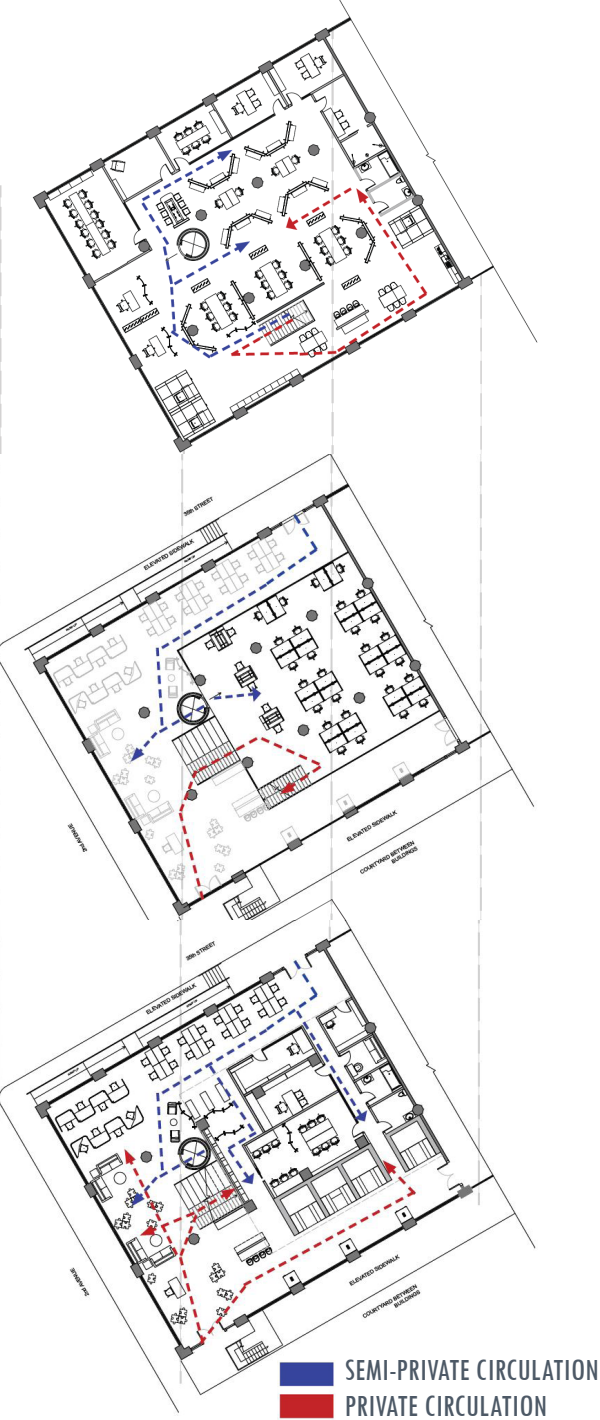
- PUBLIC
- SEMI-PRIVATE
- PRIVATE

GROUND FLOOR PLAN- CODED DIAGRAM



- PUBLIC
- SEMI-PRIVATE
- PRIVATE

CIRCULATION DIAGRAM

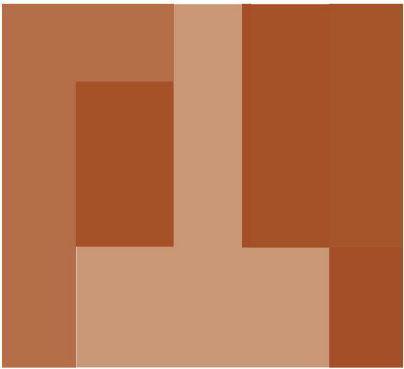


THIS WORK CONTINUES TO DISPLAY THE RANGE IN THE MULTI FUNCTIONAL FURNITURE SYSTEM AND WALL CONDITIONS FOR THE EMPLOYEES TO UTILIZES THEIR WORK ENVIRONMENT AND ALL IT HAS TO OFFER. COLLAPSIBLE WALLS TO ALLOW EMPLOYEES TO DINE OR WORK IN THE KITCHEN/DINING AREA OF THE OFFICE. PRIVACY SPACES ARE OFFERED IN PRIVACY BOOTHS, TEAM ROOMS, CONFERENCE ROOMS AND WITH THE USE OF PARTITIONS.



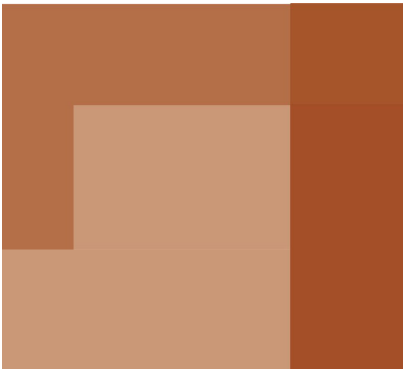
SECOND FLOOR PLAN

SECOND FLOOR PLAN- CODED DIAGRAM



PUBLIC
SEMI-PRIVATE
PRIVATE

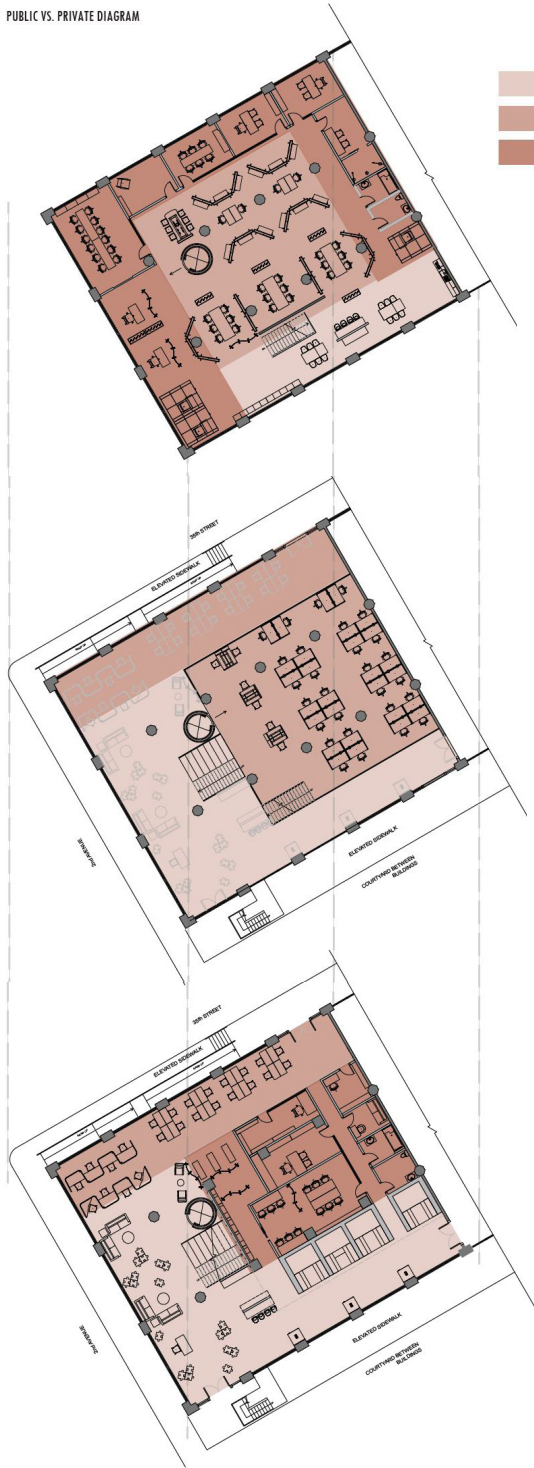
GROUND FLOOR PLAN- CODED DIAGRAM



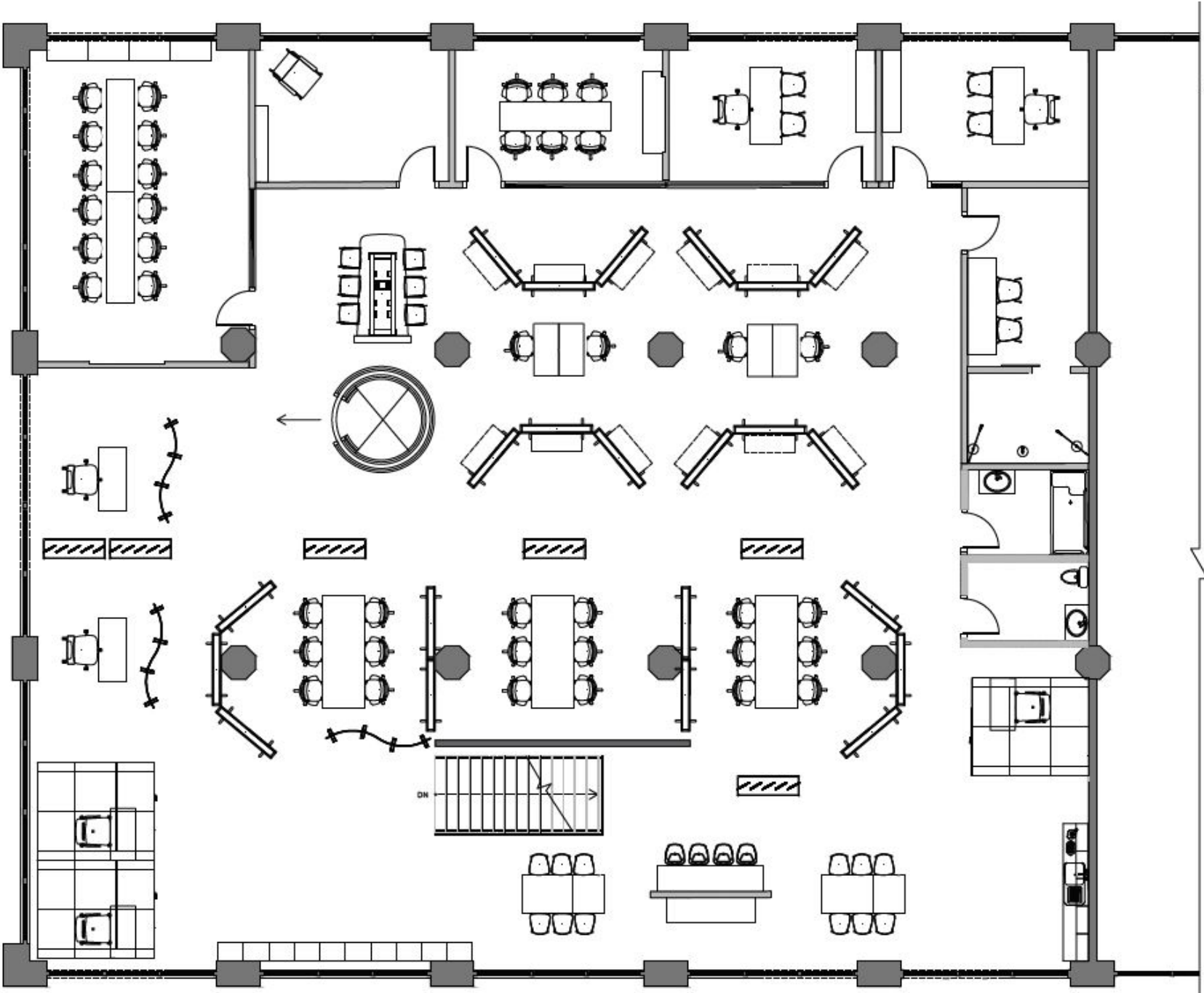
PUBLIC
SEMI-PRIVATE
PRIVATE

ISO DIAGRAMS

PUBLIC VS. PRIVATE DIAGRAM



PUBLIC
SEMI-PRIVATE
PRIVATE



THE CONFERENCE AND TEAM AREAS ARE SET UP IN A WAY WHERE THEY ARE SEPARATED BY PARTITIONS AND MULTI-FUNCTIONAL MOBILE WALL PARTITIONS. THESE PARTITIONS HELP CREATE FLEXIBILITY IN USING THE SPACE AND HAVING FLEXIBLE ZONES TO WORK. EMPLOYEES, CLIENTS AND GUESTS HAVE ACCESS TO THE ELEVATOR SO THOSE WITH DISABILITY OR HANDICAPS ARE ABLE TO NAVIGATE THE OFFICE SPACE WITH NO WORRIES TOO.



ATLANTIC AVE RESTAURANT

525 ATLANTIC AVE



SITE ANALYSIS

525 Atlantic Ave
Address: 525 Atlanlic Ave Brooklyn, NY 11217
Program: Cafe

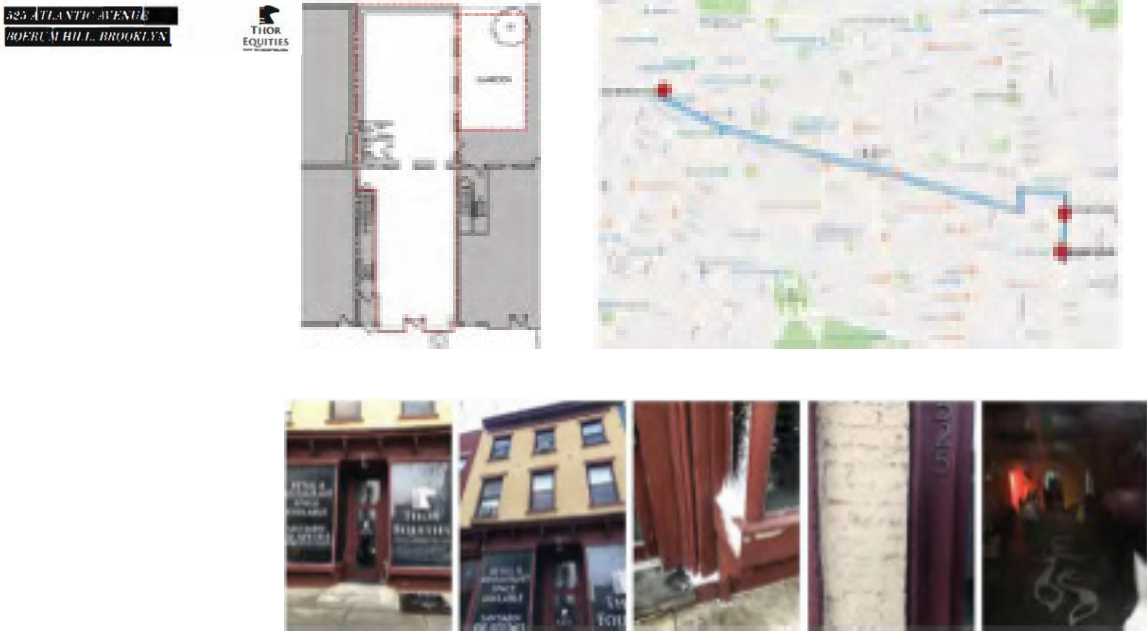
525 Atlantic Avenue is a townhouse anchored in the heart of Brooklyn's Boerum Hill neighborhood. It is located steps from the Barclay's Center and adjacent to the Atlantic Yards Project, 525 Atlantic Avenue is a good choice for a restaurant or retail location since it is in Atlantic Avenue's busy retail area. It was built in 1905 and has 3 stories, 3 units and a newly renovated 19th cenlury brick building thal features refurbished storefronts, interiors with exposed brick, 15-foot ceilings, and a landscaped garden.It is convicnllly located by Atlantic Terminal and Long Island Railroad making it accessible to over 123,00 commuters daily.

BKG Coffee Roasters
Address: 557 Myrlie Ave, Brooklyn, NY I 1205

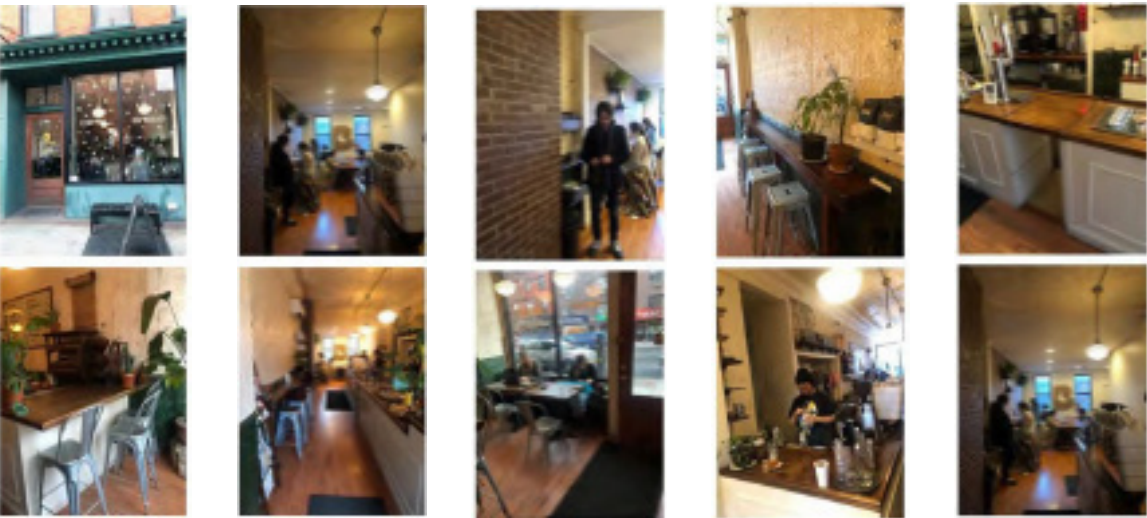
Prgram Cafe
BKG is a small batch coffee company founded by 3 brothers with a love for stellar coffee. The brothers are Craig. James and Alain; they only source 100% certified Arabica coffee beans for the taste and quality they want to achieve for their coffee. Their goal is to our delica1e balance between art and science that ensures our profiling extracts the most accurate representation of each coffee. They roast their coffee in small batch-es in order to maintain a better control of the roasting processs so that they are able to produce perfectly roasted coffee that has peaked freshness.

Clinton Hill. TB Coffee House
Address: 578 Myrlie Ave, Brooklyn, NY I 1205

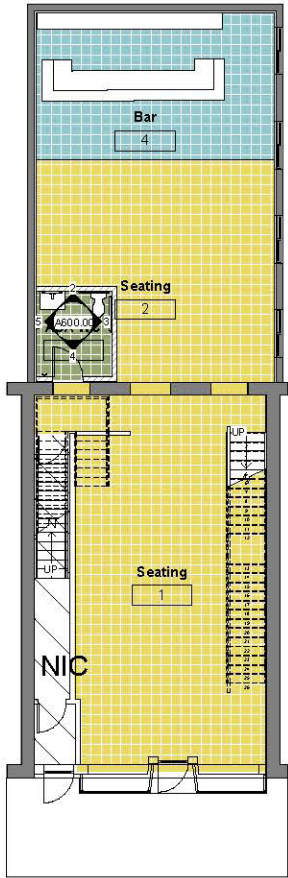
Program: Cafe
This first coffee shop is located in Clinton Hill, Brooklyn, where you can sit comfortably and leisurely by the window in a cozy chair or enjoy our backrard space. We have a complete!)’ private event space floor, which contains a Wifi, restroom, refrigerator, freezer, AC, tables, chairs and dedicated staff to ensure your next event is a success. Our event space accommodates 35 guests seated, and 60 guests standing. Our spaces can be tailored to meet all types of different events whether ii is a birthday part)’ , bridal shower, corporate dinner, happy hour, etc.



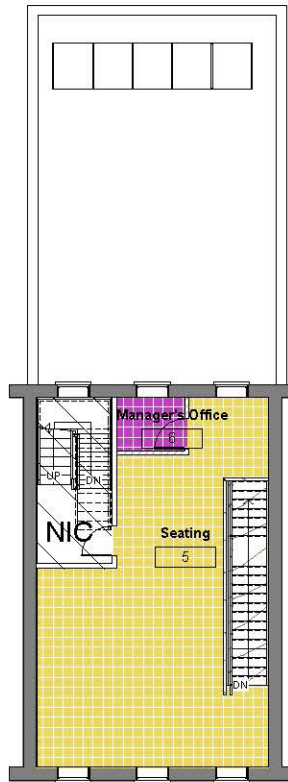
MILLWORK DETAILS ANALYSIS



CONSTRUCTION PLAN



③ LEVEL 1 SCHEMATIC DIAGRAM
1/8" = 1'-0"



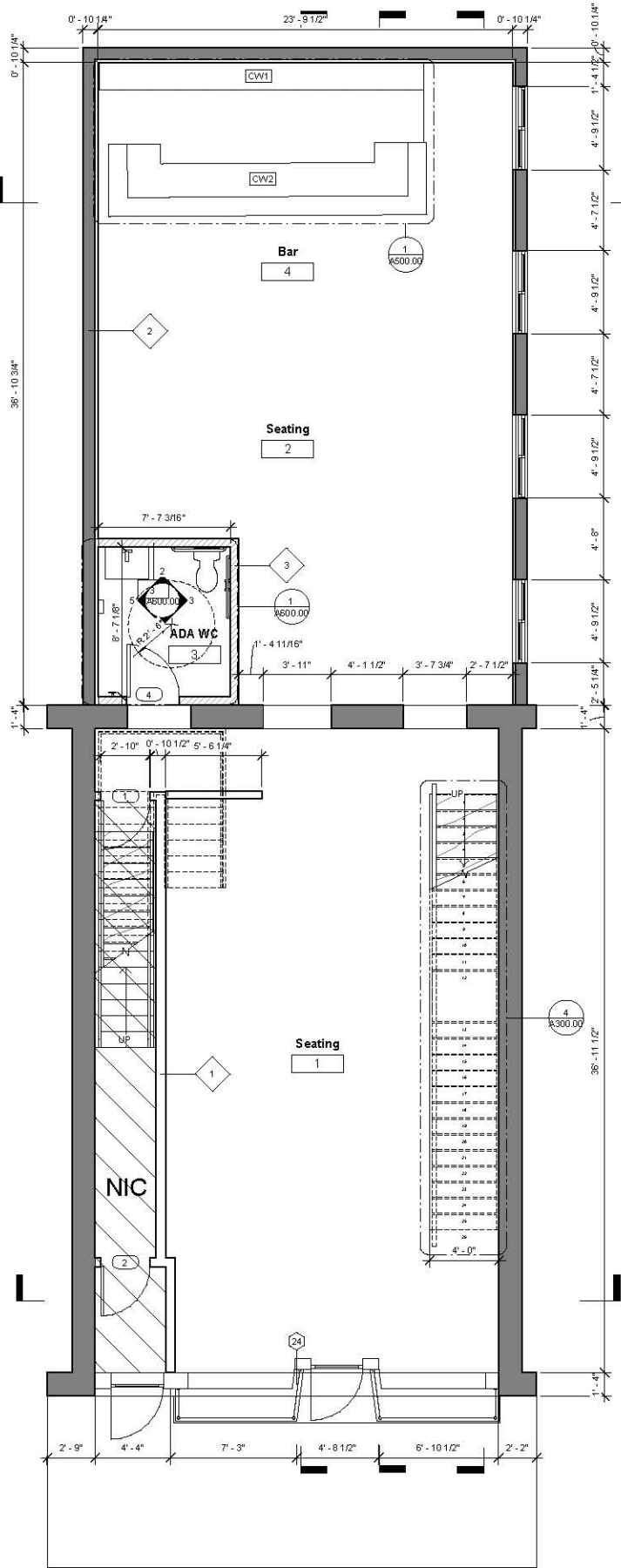
④ LEVEL 2 SCHEMATIC DIAGRAM
1/8" = 1'-0"

Room Legend

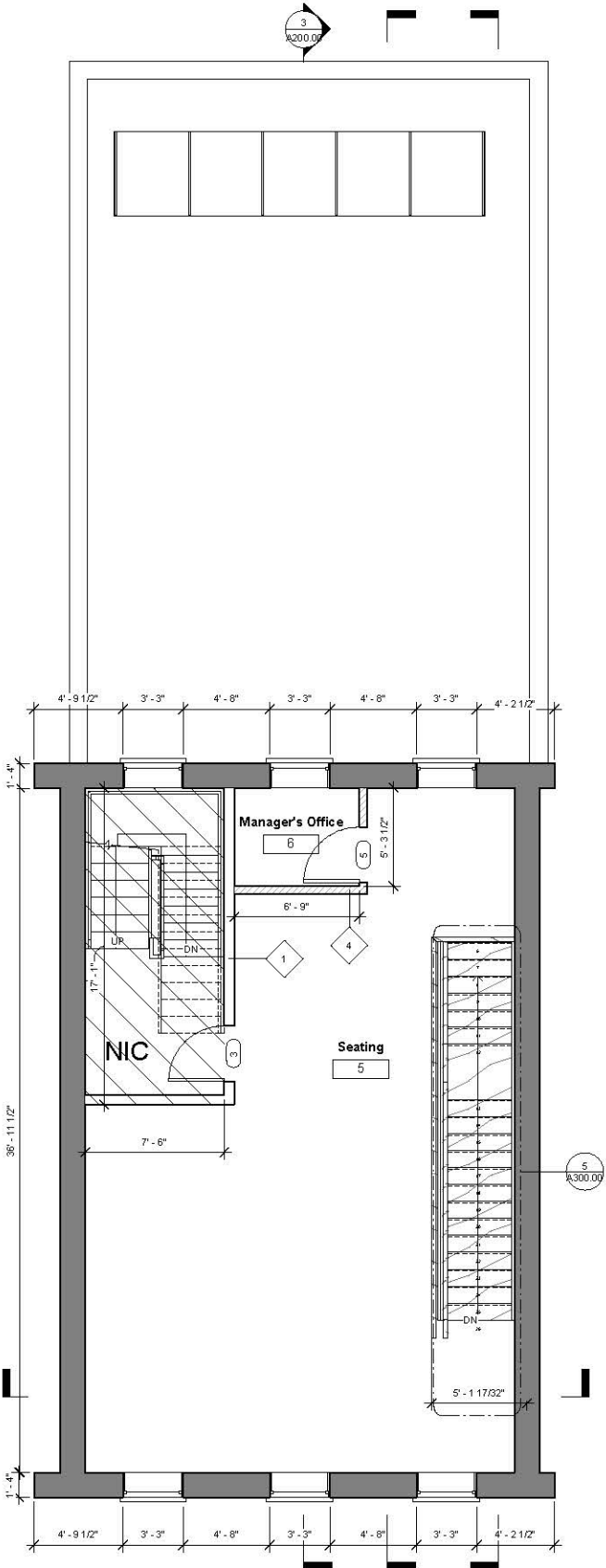
- ADA WC
- Bar
- Seating

Room Legend

- Manager's Office
- Seating



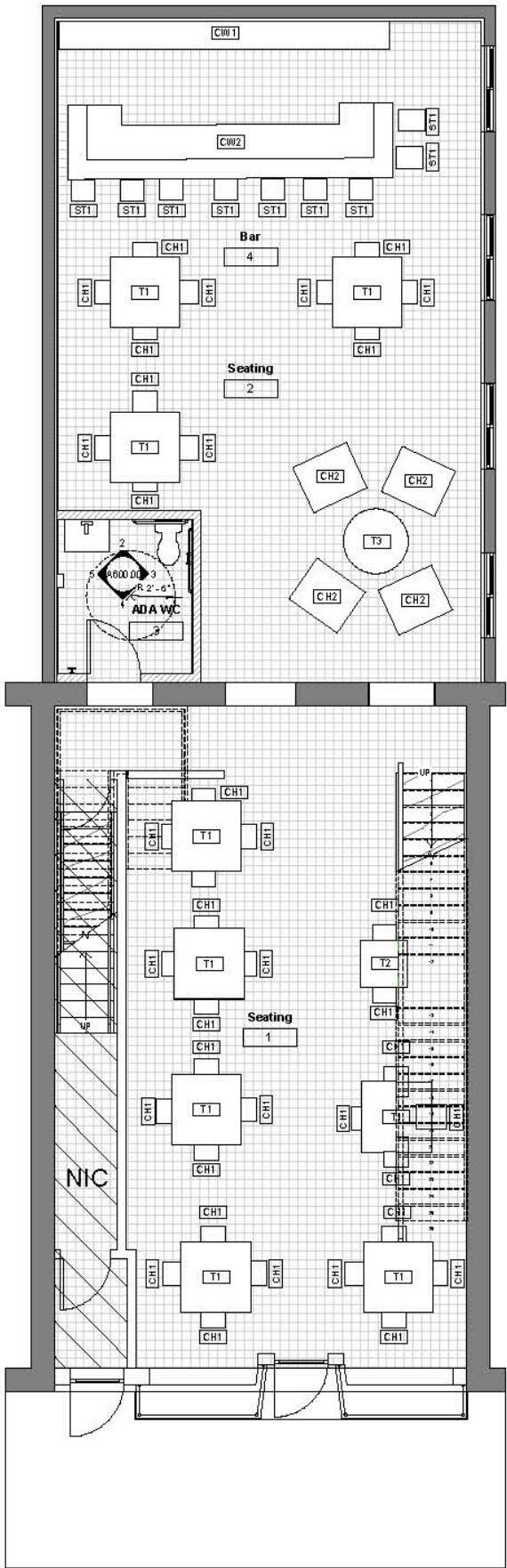
② LEVEL 1 CONSTRUCTION PLAN
1/4" = 1'-0"



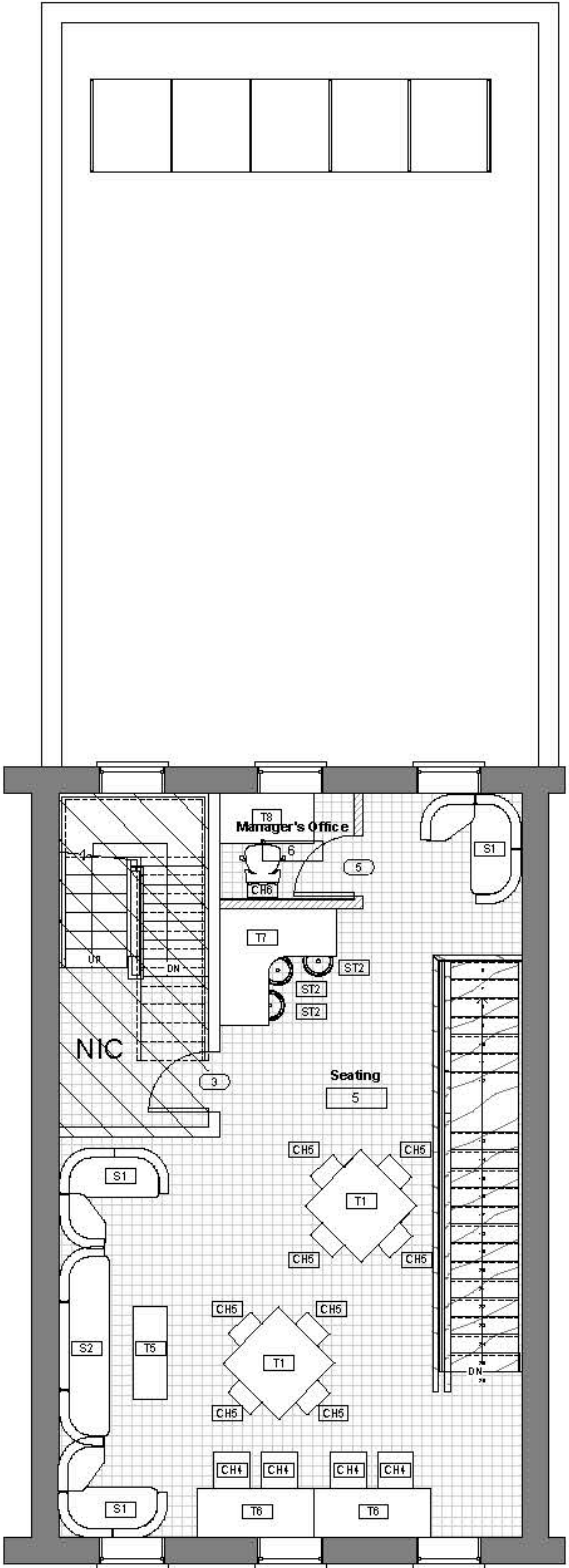
① LEVEL 2 CONSTRUCTION PLAN
1/4" = 1'-0"

FURNITURE PLAN

Furniture System Schedule									
Type Mark	Type	Count	Level	Description	Family and Type	Manufacturer	Table Finish	Model	Image
CH1	Shell Chair	38	Level 1	It provides a comfortable seating angle & an ideal degree of flexibility that follows the contours of the body & responds movements	Shell Dining Chair	Karl Andersson & Söner	Karl Andersson & Söner white oak & plastic laminate seating	Karl shell chair	
CH2	Plum lounge chair	4	Level 1	Plum lounge chair provides comfort. Its curving profiles and rounded surfaces give the collection its character	Furniture_Sofas-Armchairs_Capdell_Plum-lounge-chair: Plum lounge chair	Capdell	Capdell Upholstery Sofa	Capdell Plum	
CH4	Visaroll 2	4	Level 2	Visaroll 2 – the stackable four-legged chair on castors designed by Antonia Citterio – is perfect as a task and visitor chair as well as for conference seating. The flexible backrest and soft seat upholstery provide outstanding comfort. The seat cushion is available with different fabric covers in a selection of colours.	Visaroll2: Visaroll 2	Vitra	Vitra work chair with upholstery seating & plastic backrest 4 legged chair-Steel	Visaroll 2	
CH5	HAL wood	8	LEVEL2	The HAL Wood chair by Jasper Morrison is part of the multifaceted HAL family. The striking combination of a plastic seat shell and four-legged wooden base lends the chair its unique character. The comfortable seat shell is available in a selection of colours, whilst the chair legs come in a choice of three high-quality woods.	HAL_Wood: HAL wood	Vitra	Vitra Plastic Laminate & Upholstery Oak Legs	HAL wood	
CH6	Knoll_Office_Seating_Remix_High_Back	1	LEVEL2	Comfortable highback work chair with an adjustable height	Knoll_Office_Seating_Remix_High_Back: Knoll_Office_Seating_Remix_High_Back	Knoll, Inc.	Knoll Upholstery Steel Legs	Knoll remix	
S1	Corner Booth	4	LEVEL2	Haworth - Openest - Corner Booth	Haworth_Openest_CornerBooth: Corner Booth	Haworth	Haworth _ Wood _ Walnut VH-W35	HOAC	
S2	Double Booth	1	LEVEL2	Haworth - Openest - Double Booth	Haworth_Openest_DoubleBooth: Double Booth	Haworth	Haworth _ Wood _ White Oak VB-W35	HOA1-3	
ST1	Bop wood effect stool	12	Level 1	Bop Wood Effect Bar Stool	Bop Wood Effect Bar Stool	Knudsen Berg Hindenes	Knudsen Berg Hindenes Upholstery Oak Legs		
ST2	Seat - (Upholstery)	3	LEVEL2	Joe Stool- Upholstery	Furniture_Chairs-Stools-Benches_inoff_Joe-stool: Seat - (Upholstery)	Joe	Joe Upholstery Steel Legs		
T1	Default	11	Level 1 & Level 2	Karl-Andersson-Söner_ TAILOR-Round-Table-	Furniture_Tables_Karl-Andersson-Söner_TAILOR-Round-Table-o 1200 (f): Default	Karl Andersson & Söner	Karl Andersson & Söner Oak table		
T3	Flädie_Coffee Table_CO2	1	Level 1	Coffee table provides support with a simple design	Flädie_Coffe Table_CO2: Flädie_Coffe Table_CO2	Flädie Möbler	Flädie Möbler plastic white laminate on oak		
T5	TLL-2055 - 55d	1	LEVEL2	Haworth LTB Table	Haworth_LTB_Table: TLL-2055 - 55d	Haworth	Haworth Paint Vapor	TLL-20 20	
T6	70w29d	2	LEVEL2	Haworth - Planes HAT Rectangular	Haworth_Planes_HeightAdjust_Table_Rectangular: 70w 29d	Haworth	Haworth _ Laminate _ Maple H-AE	TARA Offect Bar Stool	
T7	70" x 70" x 29"	1	LEVEL2	Haworth Planes - HAT Corner-90 - WrapAround - 70" x 70" x 29"	Haworth_Planes_HeightAdjust_Table_Corner90_WrapAround - 70"x 70" x 29"	Haworth	Haworth _ Laminate _ Maple H-AE	TACR, TACE	
T8	CDS Single 160x80cm - Crank table	1	LEVEL2	The modular office table system CDS can be configured as individual tables, clusters of multiple work stations, spacious workbenches or meeting tables in various sizes. All are available either at a fixed height or as manual or motor-operated sit-stand solutions. The system is designed with a standard base frame, which is largely preassembled with fold-out legs. This allows CDS to fulfil the most stringent demands for flexibility in planning, use, logistics, assembly and maintenance.	CDS_Single_Table_160x80: CDS Single 160x80cm - Crank table	Vitra	Vitra laminate walnut Steel legs	CDS Single 160x80cm - Crank table	

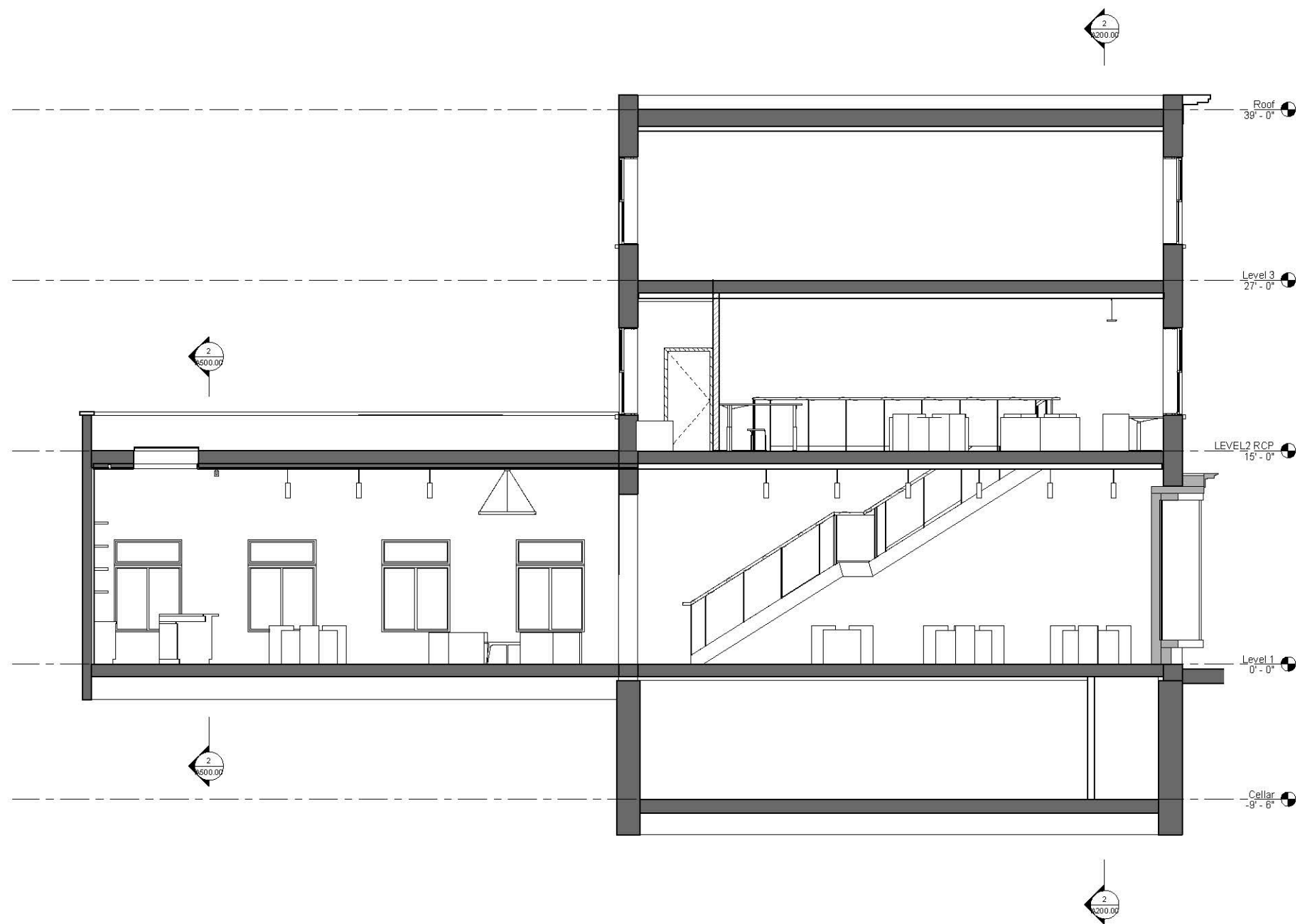


1 LEVEL1 FURNITURE PLAN
1/4" = 1'-0"

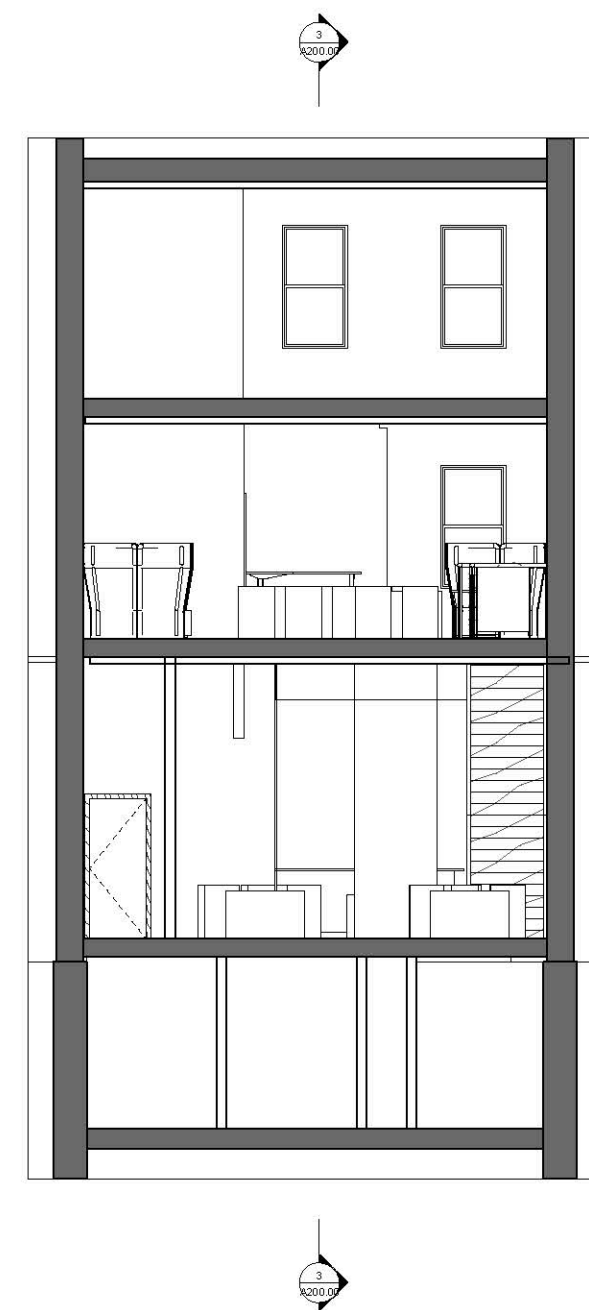


2 LEVEL 2 FURNITURE PLAN
1/4" = 1'-0"

SECTIONS

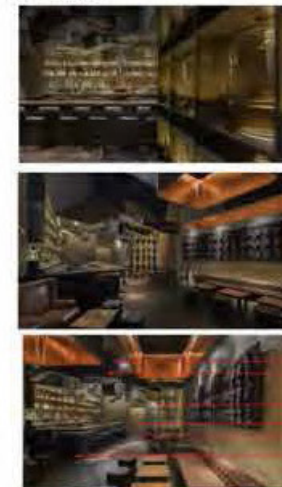
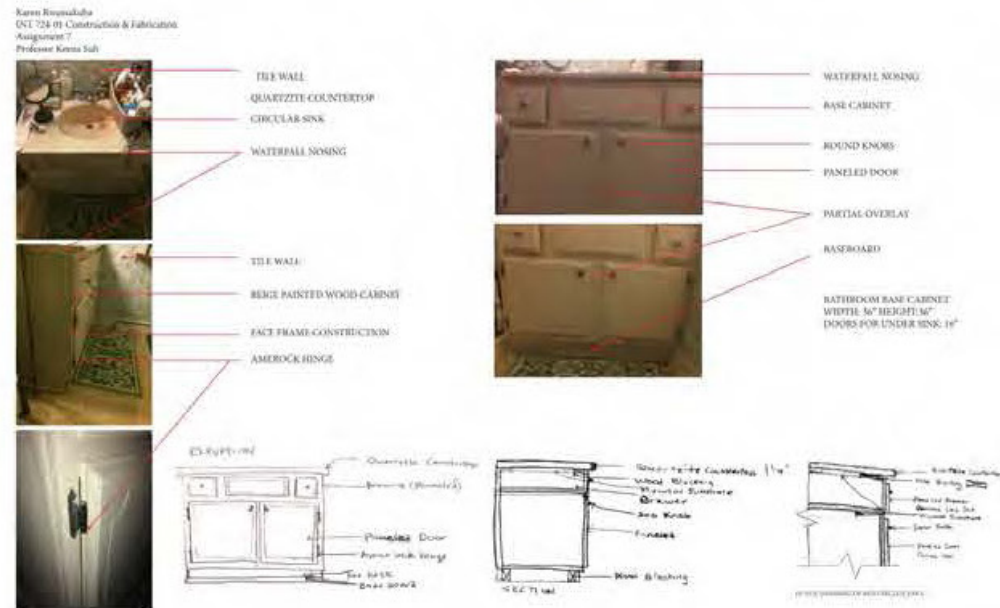


③ SECTION 5
1/4" = 1'-0"



② SECTION 3
1/4" = 1'-0"

MILLWORK & STAIRCASE DETAIL ANALYSIS

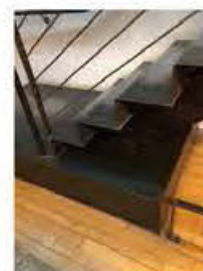
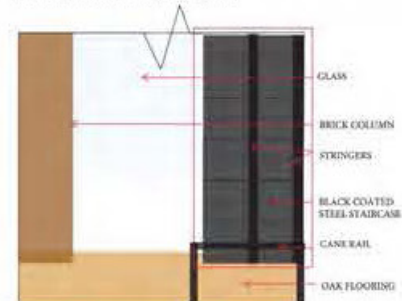


KAREN RWAMAKUBA
INT724-01 CONSTRUCTION & FABRICATION
ASSIGNMENT 5
PROFESSOR KEENA

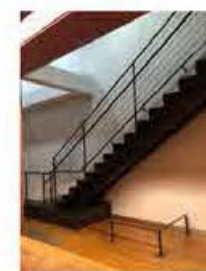
PHOTOS & SKETCHES, SECTION DETAILS

LOCATION- PRATT INSTITUTE INTERIOR DESIGN
BUILDING
STEUBEN HALL STEEL STAIRCASE

DEGRAM STEEL STAIRCASE AREA ELEVATION

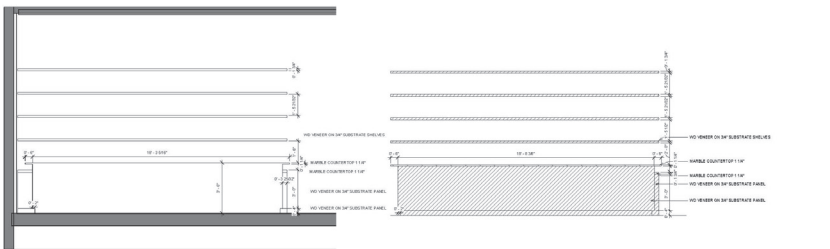
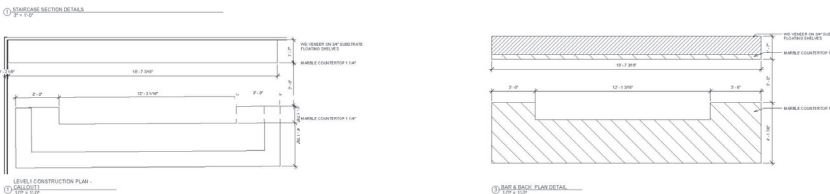
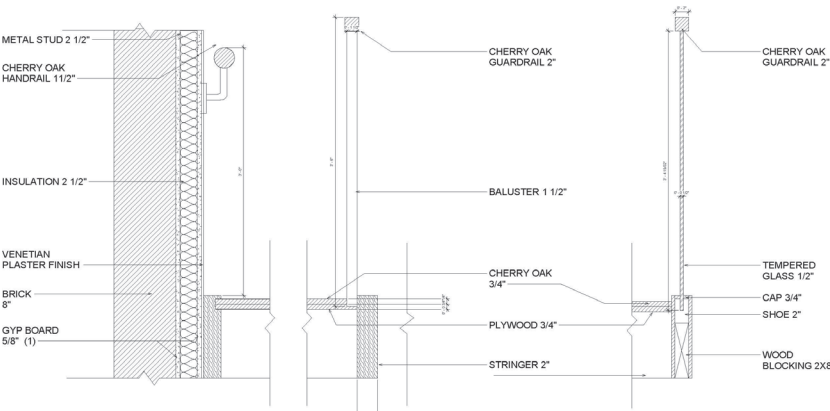


Steel Staircase is painted a black coated paint. The center where the main foot track takes place is worn out showing the true color of the steel. The guardrail, baluster and railings are made of steel as well. From the ground floor the floor finish is a wood finish, from the second floor its concrete finish.

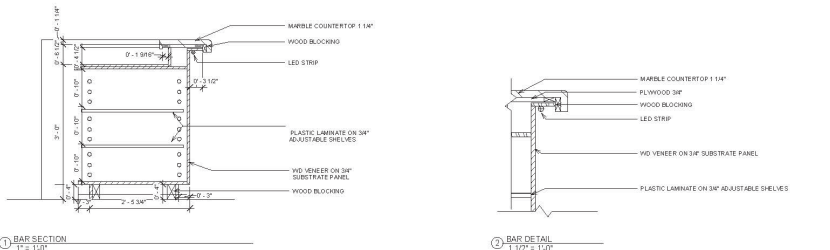


The steel staircase is being held up by two stringers. Handrails are on both sides and the guardrails consists of railings and balusters. The cane rail on the ground acts a barrier, preventing people from bumping their head.

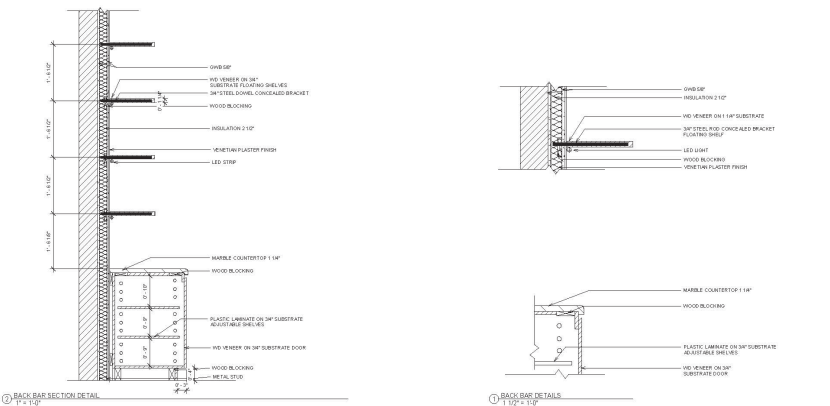
STAIRCASE PLANS & SECTIONS



MILLWORK DETAILS, PLANS AND SECTION



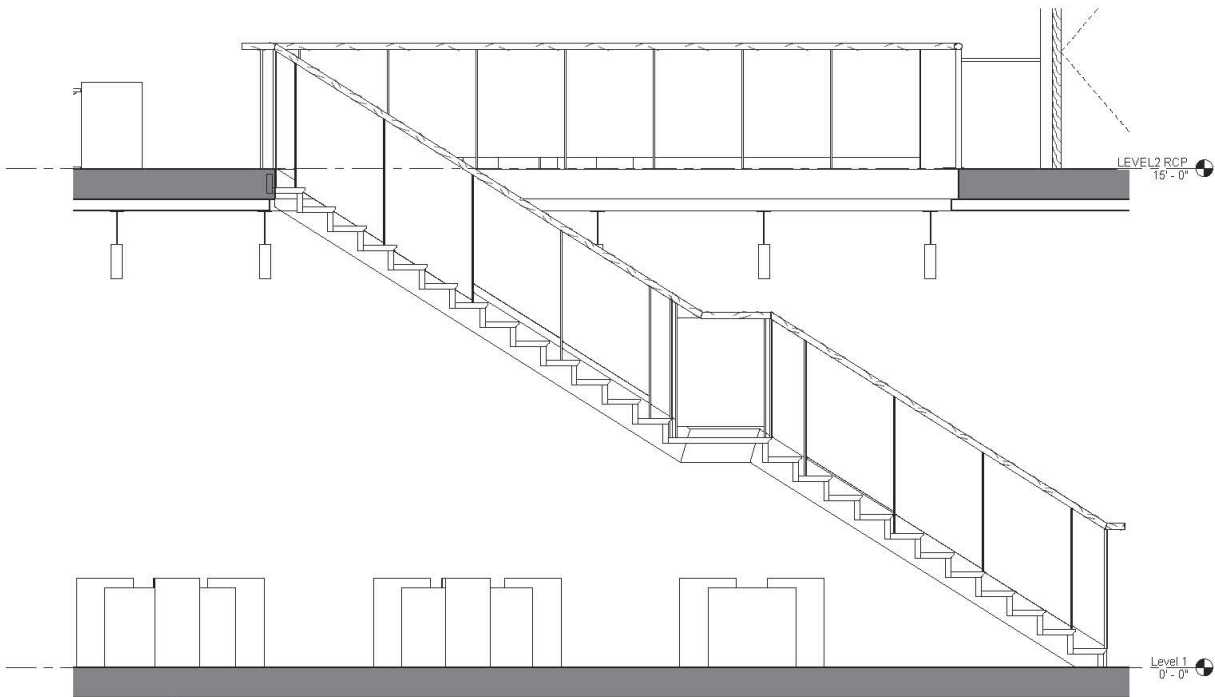
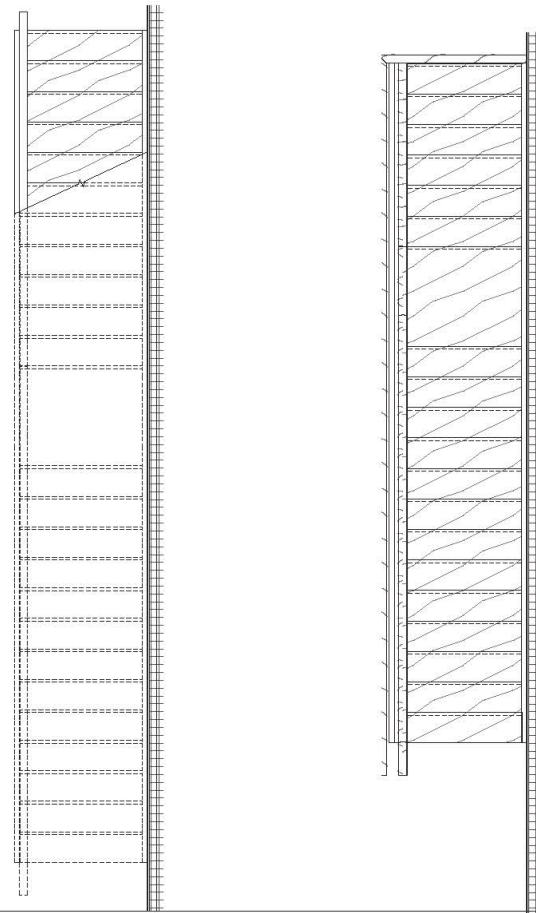
BAR MILLWORK SECTION AND DETAILS



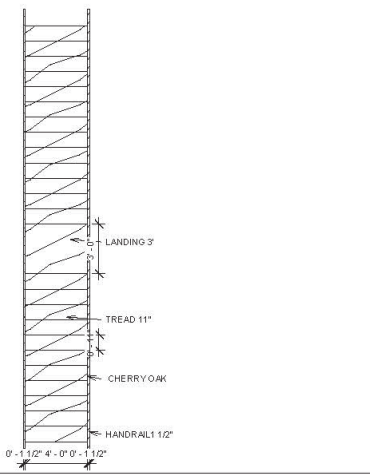
BAR MILLWORK SECTION AND DETAILS



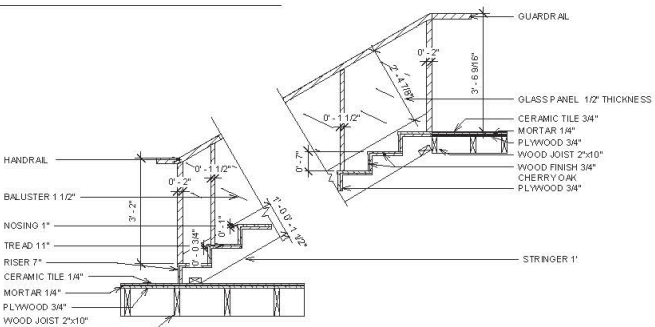
MILLWORK & FINISHES COLLAGE



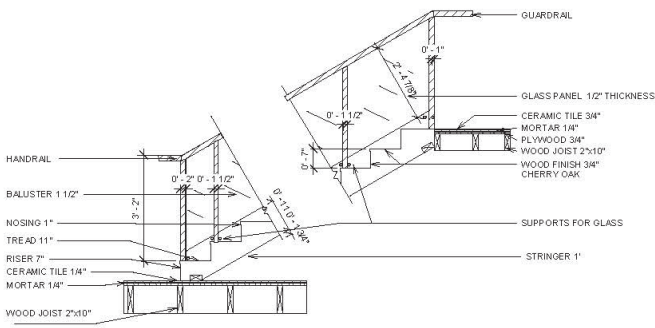
⑧ SECTION 4 CALLOUT
1/2" = 1'-0"



② STAIR PLAN
1/4" = 1'-0"



③ STAIRCASE ELEVATION DETAIL 1
1/2" = 1'-0"

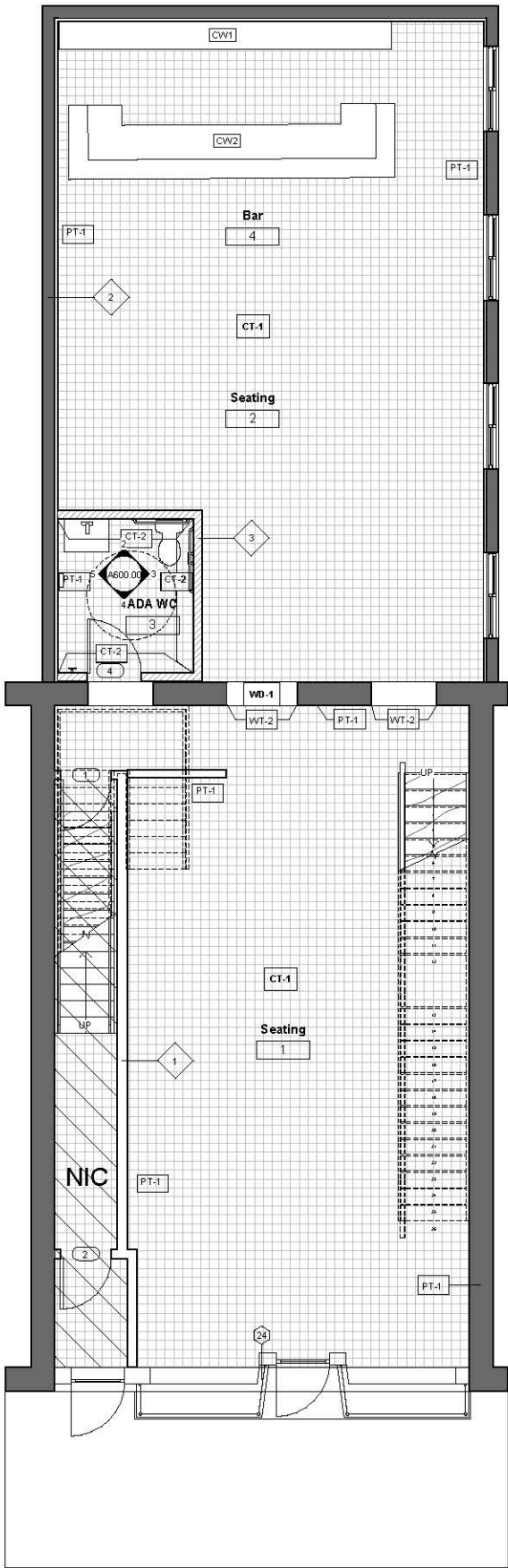


① STAIRCASE ELEVATION DETAIL 2
1/2" = 1'-0"

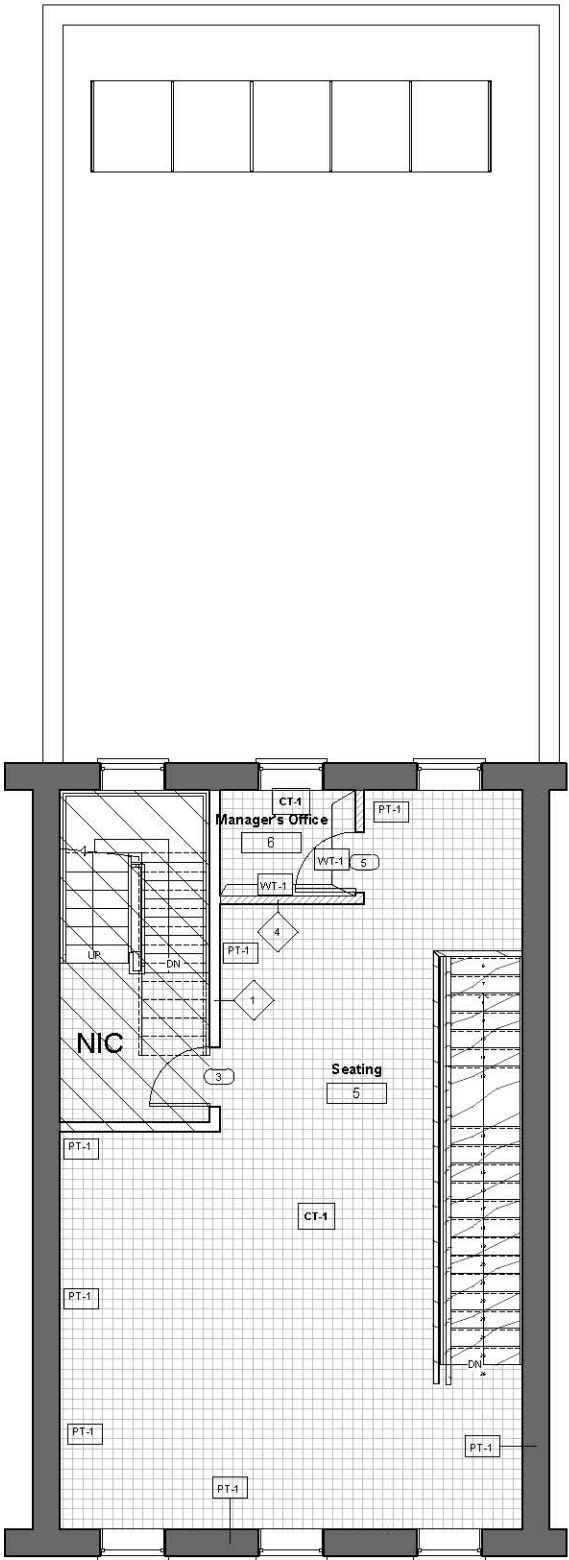
THE ENTRANCE OF THE RESTAURANT IS SET UP IN A WAY THAT ALLOWS FOR FLEXIBILITY LEADING DIRECTLY INTO THE BACK BAR AND LOUNGE AREA. LIGHTING IS SET UP TO WORK WITH A NICE AMBIENT ATMOSPHERE FOR THE GUESTS.



FINISH PLAN & SCHEDULE

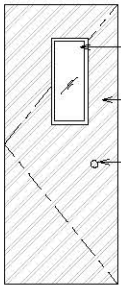


2 LEVEL 1 FINISH PLAN
1/4" = 1'-0"

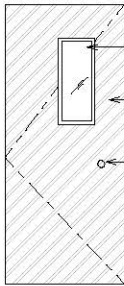


1 LEVEL 2 FINISH PLAN
1/4" = 1'-0"

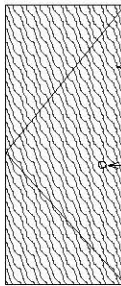
Finish Schedule						
TYPE MARK	Number	Name	Finishes			
			Level	Floor Finish	Ceiling	Wall
CT1 PT1 WT2 WD1	4	Bar	Level 1	Ceramic Tile	GWB	Venetian plaster finish & Cherry Oak veneer
CT1 PT1 WT2 WD1	1	Seating	Level 1	Ceramic Tile	GWB	Venetian plaster finish & Cherry Oak veneer
CT1 PT1	2	Seating	Level 1	Ceramic Tile	GWB	Venetian plaster finish
CT1 PT1	5	Seating	LEVEL2	Ceramic Tile	GWB	Venetian plaster finish
CT1 PT1 CT2	3	ADA WC	Level 1	Ceramic Tile	GWB	Venetian plaster & ceramic tile
CT-1 PT-1 WT-1	6	Manager's Office	LEVEL2	Ceramic Tile	GWB	Venetian plaster & wallpaper



DOOR
TYPE 1



DOOR
TYPE 2



DOOR
TYPE 3

3 DOOR ELEVATIONS TYPES
1/2" = 1'-0"



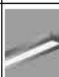




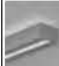

Door Schedule				
Mark	Family	Height	Width	Finish
1	Single-Flush	7' - 0"	2' - 10"	MATTE, BLACK COATED PAINT
2	Single-Flush	7' - 0"	2' - 10"	MATTE, BLACK COATED PAINT
3	Single-Flush	7' - 0"	3' - 0"	SATIN VARNISH FINISH
4	Single-Flush	7' - 0"	3' - 0"	MATTE, BLACK COATED PAINT
5	Single-Flush	7' - 0"	3' - 0"	SATIN VARNISH FINISH

THE UPSTAIRS RESTAURANT AREA ALLOWS FOR MORE LOUNGE SPACE AND WORK AREAS FOR GUESTS WHO WOULD PREFER MORE SILENCE . THERE IS ALSO ADMINISTRATION OFFICE FOR THE MANAGER AS WELL WHICH DOES NOT INTERFERE WITH THE CIRCULATION FOR THE GUESTS. THE PRIVACY BOOTHS WITH THE PARTITIONS ALLOWS FOR A MORE INTMACY AND PRIVATE LOUNGING.



REFLECTED CEILING PLAN & LIGHT FIXTURE SCHEDULE




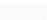



Lighting Fixture Schedule									
Type Mark	Count	Level	Description	Manufacturer	Model	Lamp	Wattage	Voltage	Image
L1	4	LEVEL2 RCP	Track Lighting	Lumenverx	Via2 Surface	LED	9 W		
L2	1	Level 1	Pendant	Amerlux	Nitro	LED	9 W		
L3	2	LEVEL2 RCP	Pendant	Lumenverx	Camber Pendant ICL	LED	9 W		
L4	36		Recessed Linear Parabolic	LUMENWE RX	CLUSTERS	LED	2 W	120 V	
L5	1	Level 1	Pendant	Lumenverx	Rim Round Pendant Dired/ndirect 48	LED	9 W		
L6	5	Level 1	Track Lighting	Amerlux	SPE G-M	LED	26 W		
L7	21		Pendant Cylinder	Amerlux	Rook 350/475	LED	9 W		
L8	5		Pendant	Lumenverx	Canyon Wall Direct Indirect	LED	9 W		
LA2	1	LEVEL2 RCP	Ighted Mirror , 24 Inch W x 33 Inch H	KOHLER Co.	K-99571-TL-NA		96 W		

THE BACK BAR AREA IN THE RESTAURANT ALLOWS FOR MORE LOUNGE ATMOSPHERE TO RELAX AND ALLOW THE GUESTS ACCESS TO NATURAL LIGHT FROM THE SKYLIGHT. GUESTS HAVE THE OPPORTUNITY TO MEET UP AND HAVE CASUAL DINING WITH THE LAYOUT WHICH ALLOWS FOR FLEXIBLE CIRCULATION AND ZONES FOR CASUAL DINING.



PARTITION TYPES



Specialty Equipment Schedule										
Type Mark	Type	Level	Count	Manufacturer	Model	Description	Finish	Image	Watts	Voltage
TA3	TA-ABS-110-120V 7-7.7A - 770-915W	Level 1	1	Excel Dryer	TA-ABS-110-120V 7-7.7A - 770-915W	ThinAir Series	Polished White Sloan		915 W	120 V
GB2	Not A Type, See Type Catalog	Level 1	1	KOHLER Co.	K-10545-S	42 inch ADA compliant grab bar	Kohler-Metal-CP- Polished_Chrome			
GB1	Not A Type, See Type Catalog	Level 1	1	KOHLER Co.	K-10544-S	36 inch ADA compliant grab bar	Kohler-Metal-CP- Polished_Chrome			
TA1	CP-Polished Chrome	Level 1	1	Kohler	K-13434-CP	Coralais Toilet Tissue Holder	Kohler-Metal-CP- Polished_Chrome			
TA4	CP-Polished Chrome	Level 1	1	KOHLER Co.	K-16256-CP	Double robe hook	Kohler-Metal-CP- Polished_Chrome			

RESTAURANT ALLOWS FOR MORE LOUNGE ATMOSPHERE TO RELAX AND ALLOW THE GUESTS TO CHOICES IN FURNITURE SYSTEMS TO MEET UP AND HAVE CAUSAL DINING.THE BLE CIRCULATION AND ZONES FOR CASUAL DINING. THE OPEN ARCHWAYS ALLOWS GUESTS TO BE PUSHED INTO THE BACK BAR AREA, UPSTARIS TO A MORE PRIVATE CO-WORK DINING EXPERIENCE

