

NATURE WITHIN AN URBAN SHELL

Peter Na

Prof. B.Moran

21/SP-INT402-6V

Pratt Institute School of Design, Interior Design Department

Table of Contents

CONCEPT	1 -
DESIGNING MODULES	5 -
SITE	11 -
GREEN CONTEXT / PROGRAMS	13 -
LIGHT / CIRCULATION	17 -
DESIGNING A POCKET OF NATURE	19 -
THESIS QUESTIONS	25 -
APPENDIX	27 -
BIBLIOGRAPHY	31 -

Thesis

Statement

This thesis will explore the relationship between humans and nature, as well as the connection between the two. Nature has been slowly depleting in most urban settings. We as humans do not realize the urgent need of nature surrounding us. This thesis will be applied to a communal mini-mall located within a bustling neighborhood in Seoul, South Korea. The users will be the ones who pass by or live/work nearby where they can come and take a break from reality and relax, taking off their urban shell.



Biophilia

A hypothetical human tendency to interact or be closely associated with other forms of life in nature : a desire or tendency to commune with nature.

Biophilic Elements



Sensory Stimuli

The smell of vegetation, percipitation, dirt etc, visual color stimuli by the variety of vegetation engages another level of community.



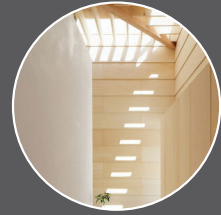
Various Vegetation

A variety of vegetation create atmosphere, mood and tone of space.



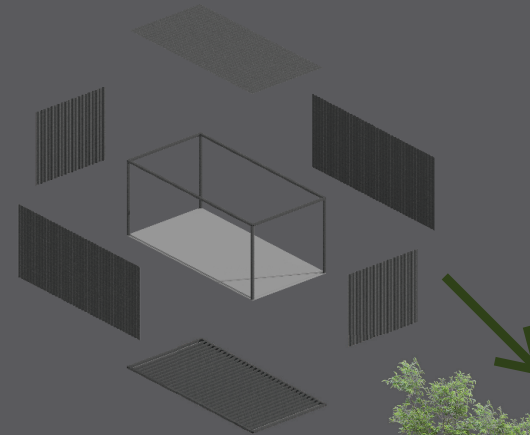
Shelter and Structure

The structure of vegetation imitate community and strength.

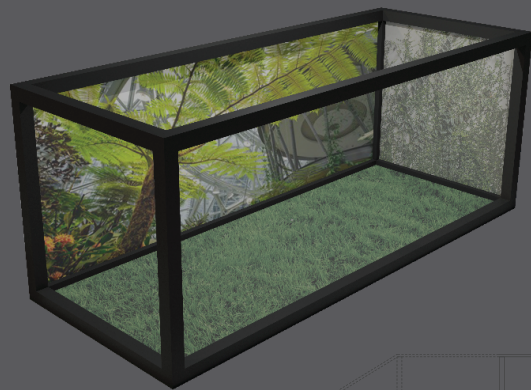


Diffused Natural Light

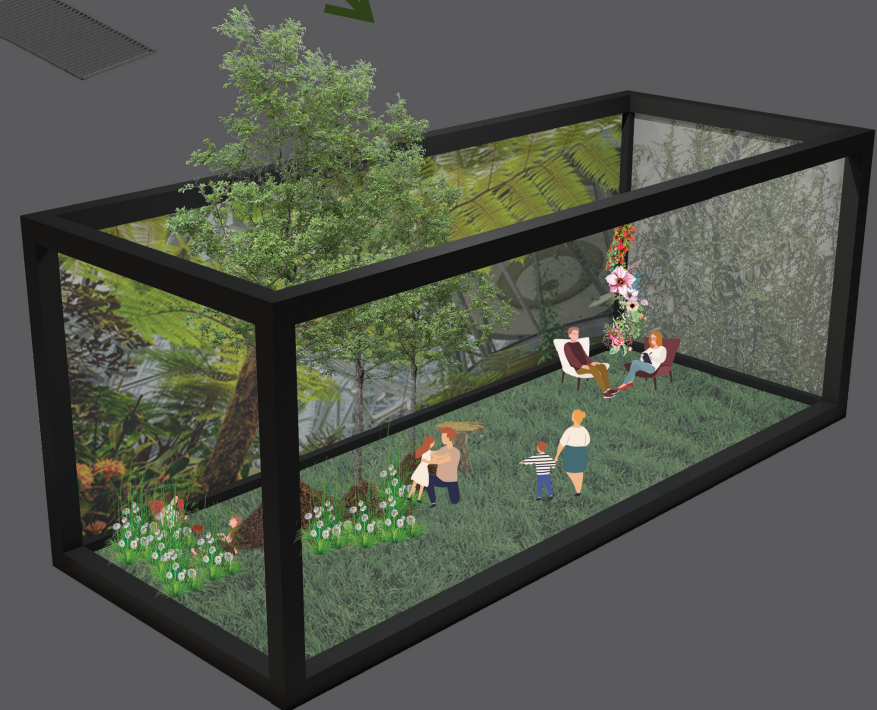
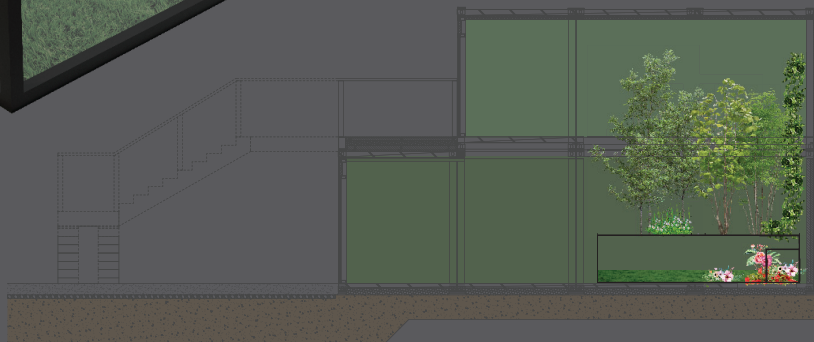
The use of natural light enhances the warmth and cozyness of space.



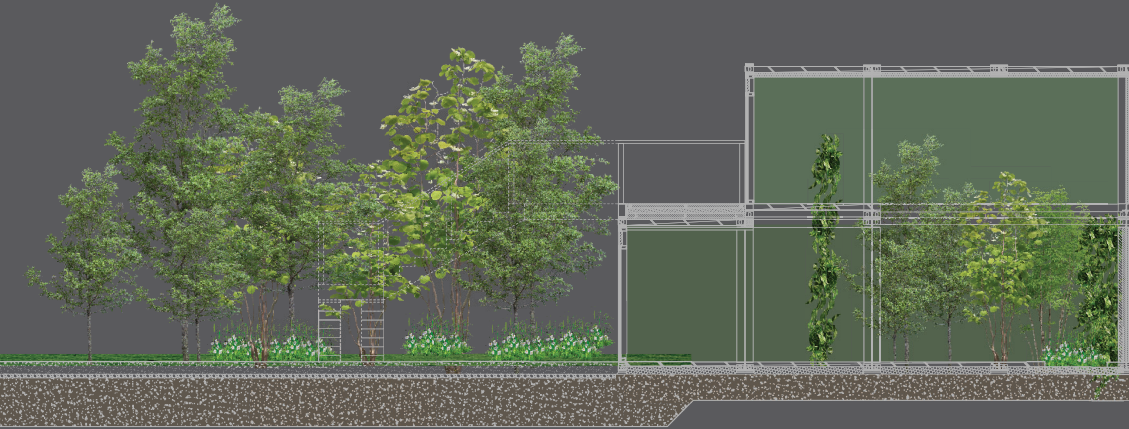
The existing architecture will represent the urban world outside the walls of the interior, the interior space will act agains the architecture, opposing each other. This will represent the current world we live in, yet remind us that nature is also a crutial part of life and is closer than thought.



Confining to the space, creation of being enclosed by nature.

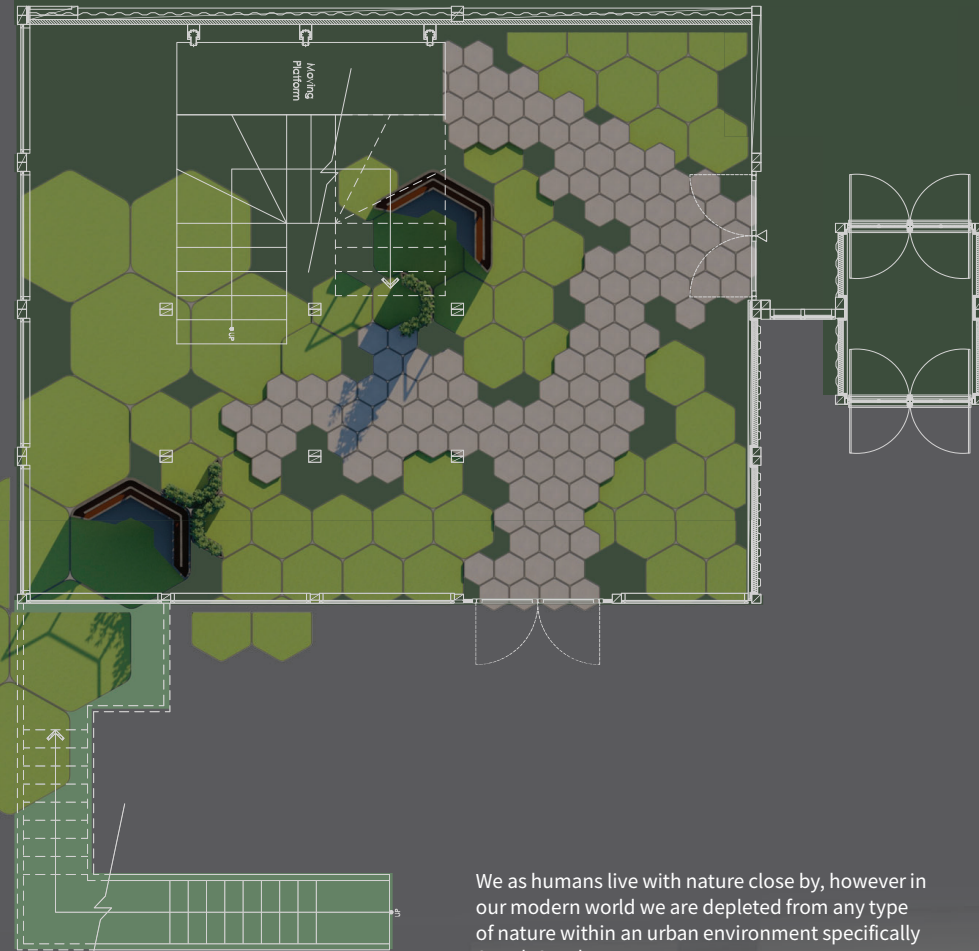
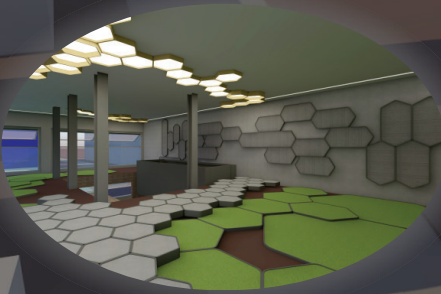
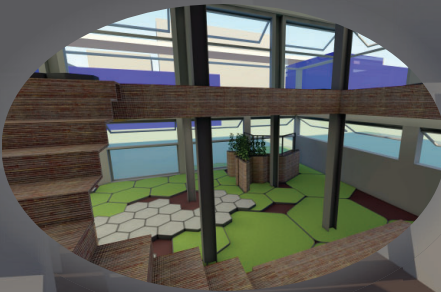
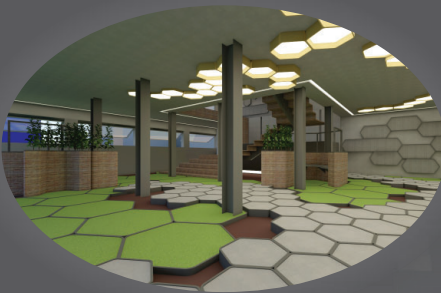


Pocket of Nature within an Urban Shell.



Design Concept

This thesis will dive into the relationship between nature and human interactions. through various different elements of biophilic design will create an atmosphere that users can immerse in and step away from the urban world that they live in. The site is located in Seoul, South Korea where they have a consistently developing urban setting, along with a large demographic of people. The structure of the chosen site resonates with this thesis, representing the urban shell that we live in, and the biophilic elements will be carefully implemented within the space to finalize the thesis of "Nature within a Urban Shell".



We as humans live with nature close by, however in our modern world we are depleted from any type of nature within an urban environment specifically Seoul, South Korea.

"Bringing nature into the confines of space."



View from NW building (facing SE)

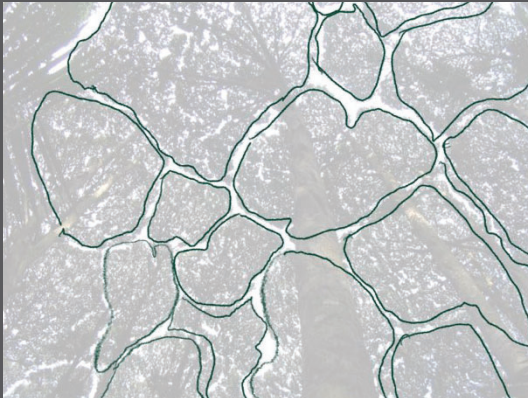
Crown Shyness

Nature within Human's

Crown Shyness

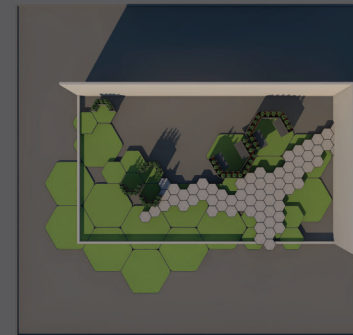
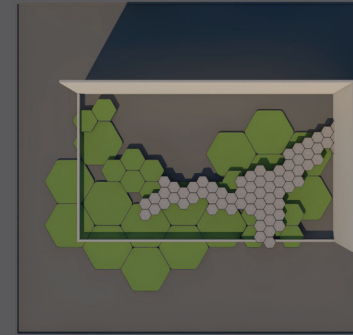
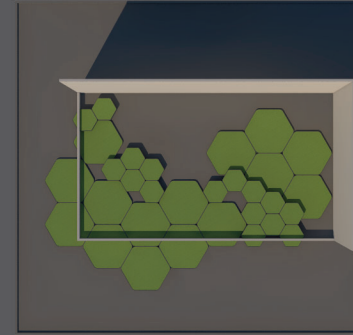
Is a phenomenon that occurs within adult trees that, where the leaves do not touch the adjacent tree. This can be seen in large forested areas where many trees are close to one another.

We as humans also resemble Crown Shyness within our everyday lives. This occurrence can be easily seen walking down the street without us even noticing. This phenomenon is a representation of who we are and how closely we are rooted into nature itself. The modules will be a symbol of us in nature, how they come together to create a whole.



Modularity

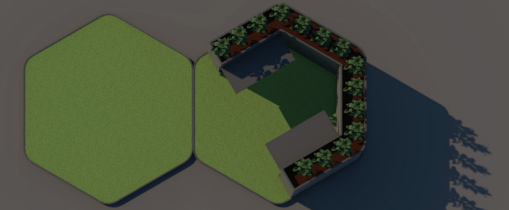
Interpreting Nature



Between the modules the small geometric shape that occurs will be filled with soil and planted with chosen flower/plants



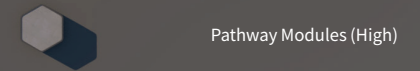
Each module will resemble the shape of the phenomenon; Crown Shyness. 3 different sizes will be used and each module can be modified into the needed types of material and finishes.



L Seating Modules (Low)



M Seating Modules (Medium)

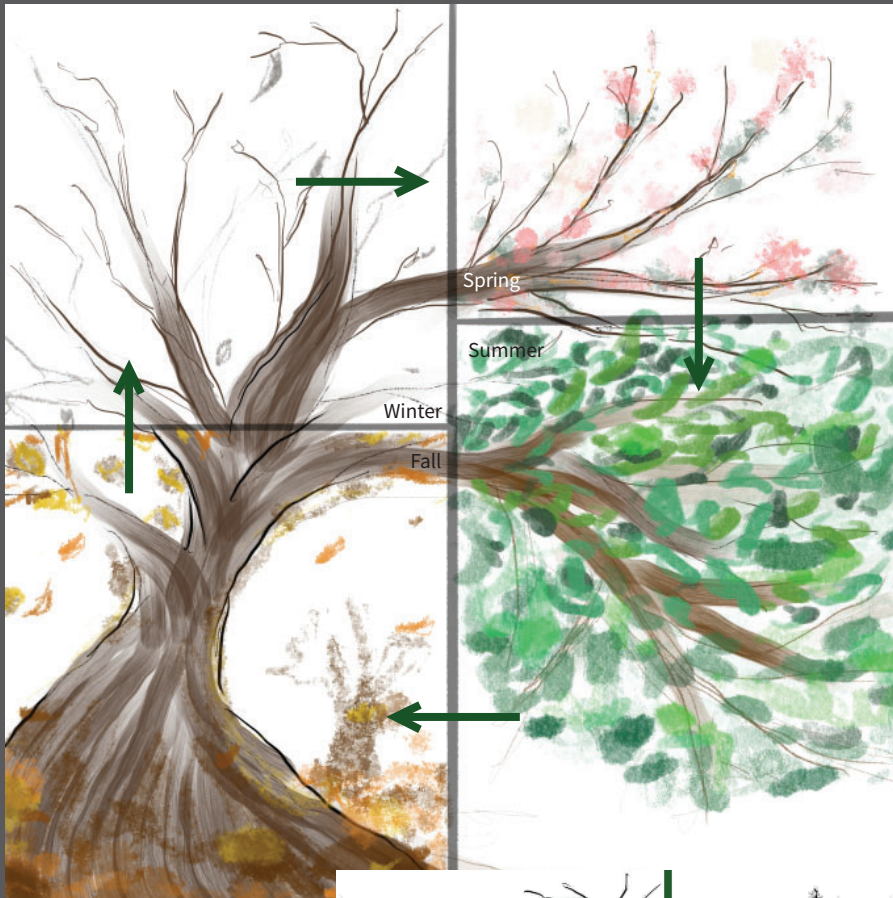


Pathway Modules (High)



Vertical Modules (Wall)

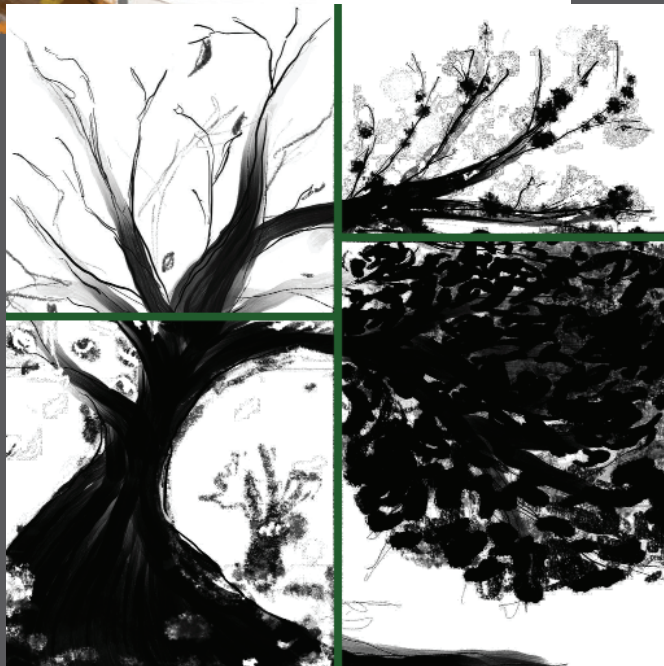
Cycle of Nature



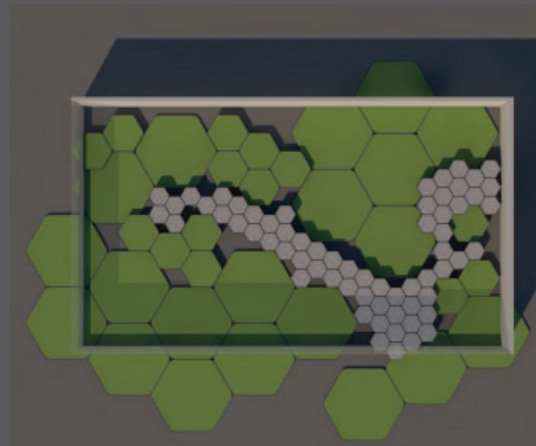
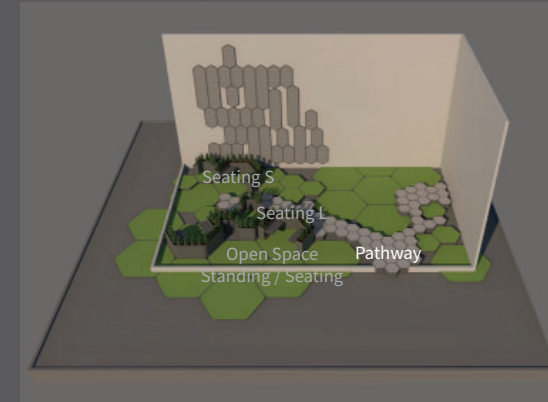
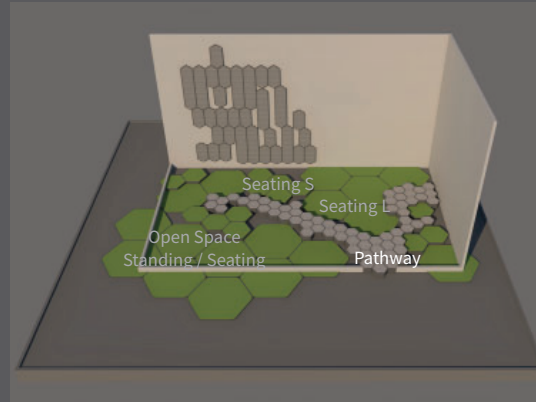
Cycle of Season's

The climate of Seoul also affects the cycle of nature. Korea has four distinct seasons, though the duration of each season differs drastically. The population of Korea's capitol can experience distinct climate cycles. The cycles not only change the scenery of the capitol, but within the setting of the site, this can also translate to the visibility that the greenery provides. This will also drastically change according to the seasonal changes.

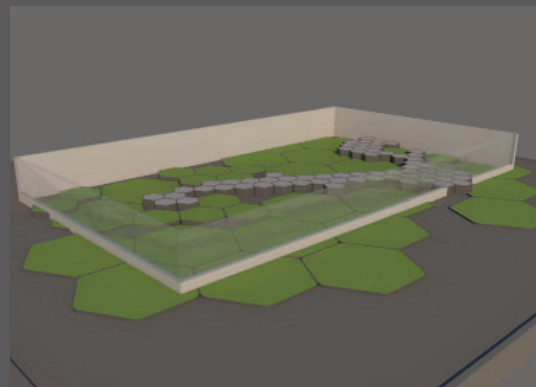
The greenery, specifically greenery that has leaves, naturally fall and grow back. During this process, the cover that the leaves provide open up visibility throughout the space when they fall off.



Modular Stacking



The height difference of each module will allow for a more visible understanding of the space, dividing the space without the use of a physical barrier

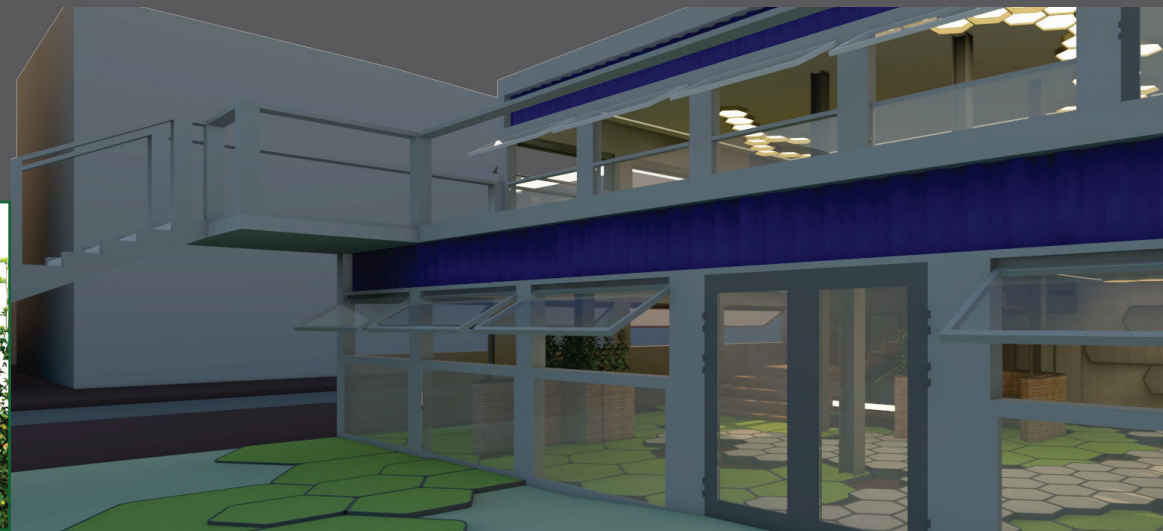
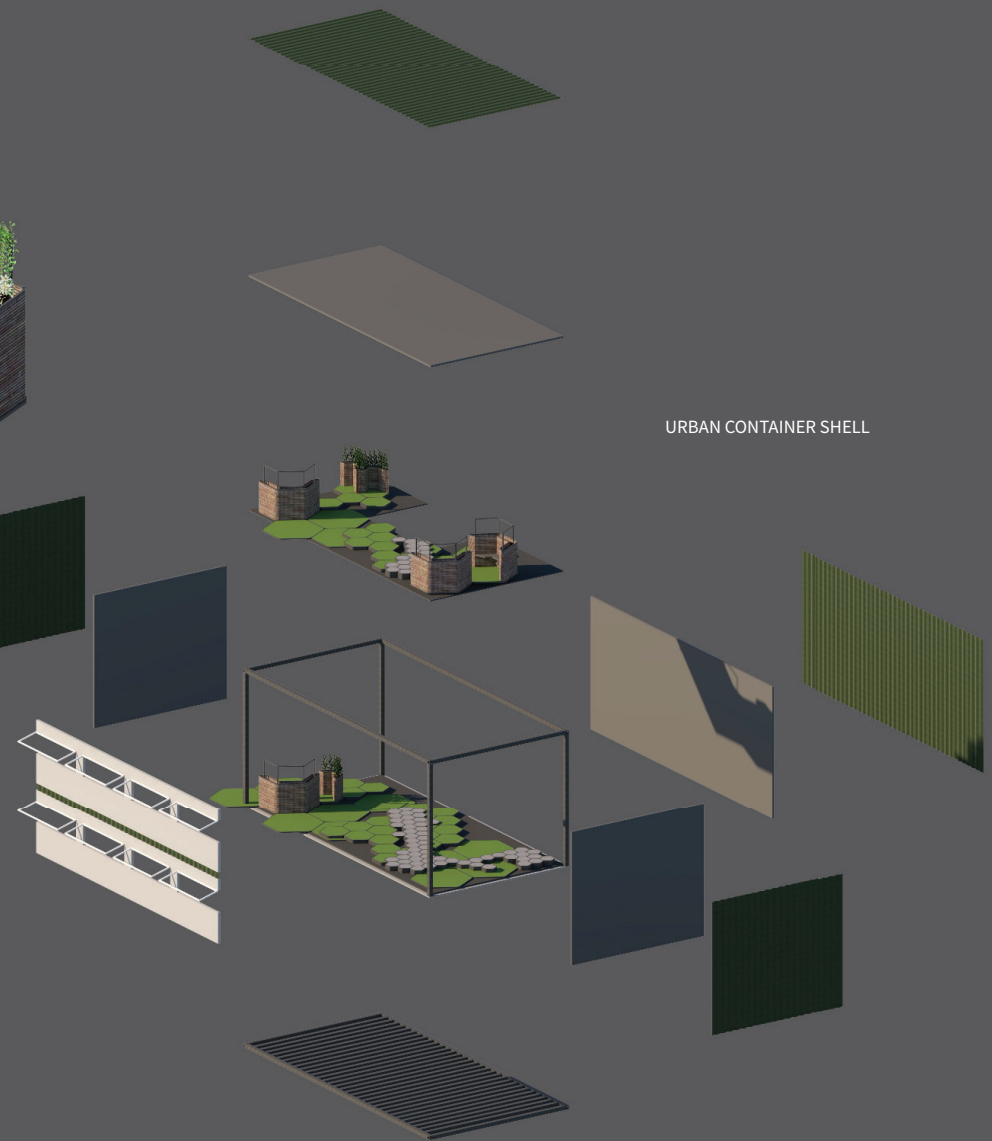
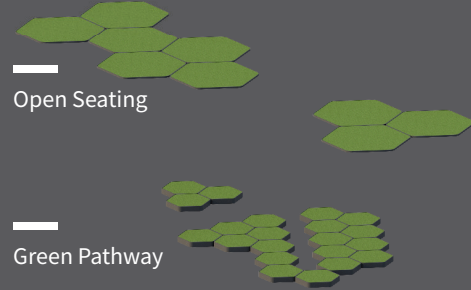
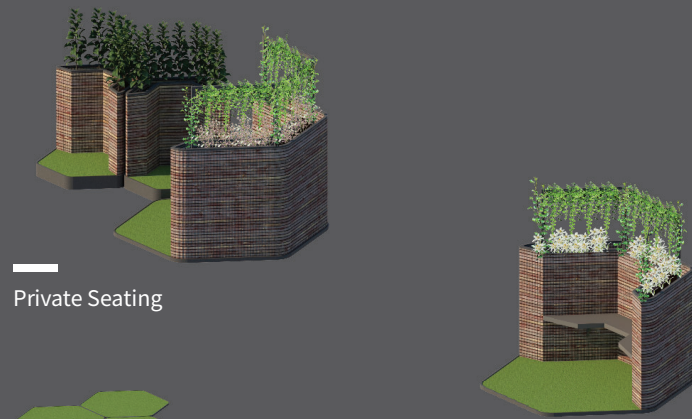


The addition of seating and vertical modules allows for a continuous connection between the horizontal and vertical space.

Nature Within

The world we see around us is the aftermath of heavy development; urbanism. The container box represents the artificial, far from nature environment; the Shell. The final piece, nature will fill the inside, a hidden gem within a "Urban Shell".

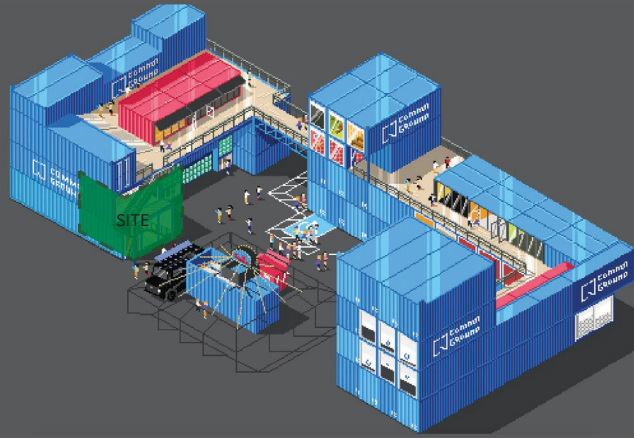
- 1 Silver Birch Tree
Symbolizing beginnings, renewal & purification.
- 2 Hawthorn Tree
Greek (Kratos - Strength / Akis - Sharp)
Symbolizing love, all types of love directed toward myself.
- 3 Rowan Tree
Celtic Mythology (Tree of Life)
Symbolizing courage, wisdom and protection.
- 4 Magnolia Flower / Tree - Single Tree within Void
Signifies love of Nature.
- 5 Daisy Flower
Symbolizes innocence in oneself.
- 6 Edelweiss
Symbolizes courage and devotion.
- 7 Chrysanthemum (Red / White)
Symbolizes happiness, longevity and joy.
- 8 Rose of Sharon (Mugoonghwa Flower) 무궁화 꽃
National flower of South Korea.
"Forever flower that will never die"



Site

COMMON GROUND / Seoul, South Korea

This complex is made up of 160 40ft container boxes. This complex is to represent the urbanism that has occurred around us, depleting nature from our surroundings.



The material/modularity of the structure closely represents how and what we have become.

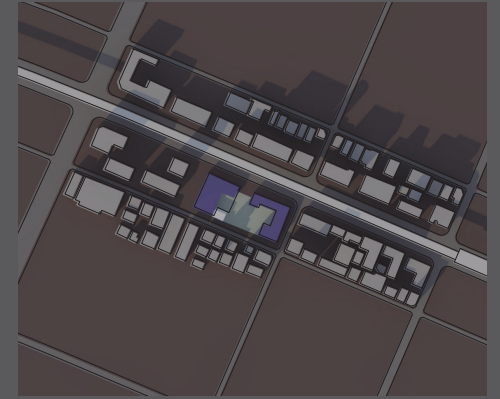


City Context

Satellite View (City Context)



Bird's Eye View (Shadow & Light)



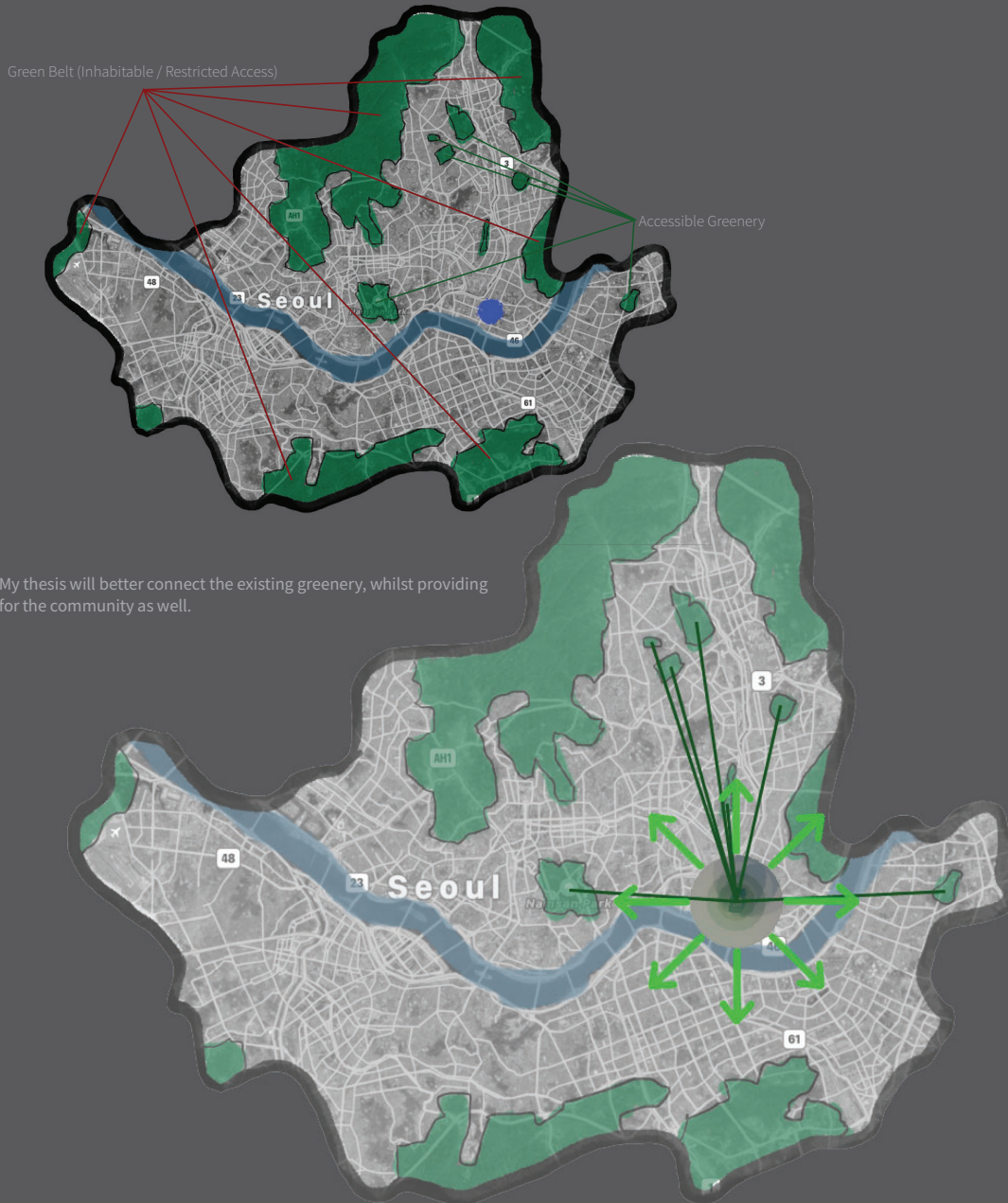
By understanding the surrounding, which is a heavily populated and architecturally dense surrounding. The lack of nature can be easily seen. The placement of my thesis project will allow not only a "Pocket of Nature", but it will stand out to all that pass by and fulfill our human connection with nature.



This site was chosen due to its large variety of demographics nearby, as well as ease of access due to one of the busiest subway stations adjacent to the site. The major factor of this site was the material that it was built with; container boxes. This represents the industrialized and technologically advanced modern society we live in, a drastic opposite of nature.

Surrounding Green Context

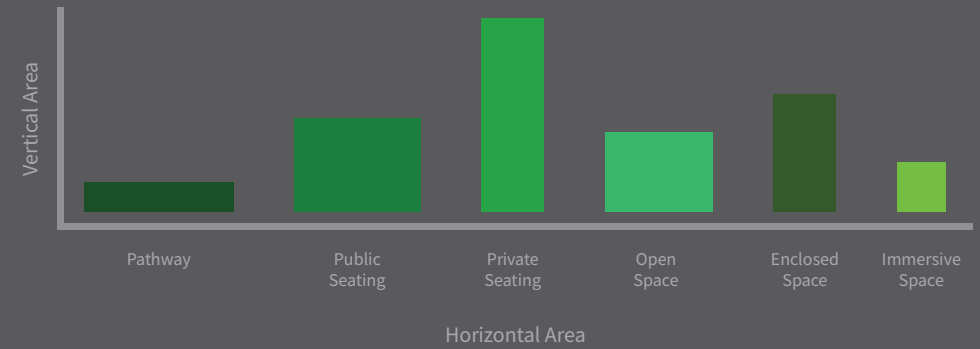
Seoul, South Korea is a heavily developed country, that has grown rapidly in the past century. Due to this boom of infrastructure and population, there was not enough room to spare for enough greenery.



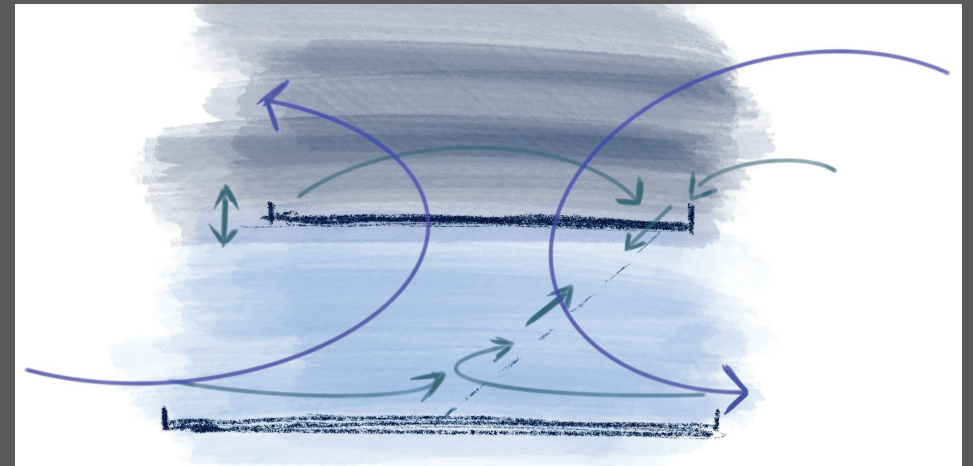
Programs

TOTAL AREA - 180m² / 1930 sqft

Pathway	10%	18 m ² / 193 sqft	Horizontal	Green + Color
Public Seating	25%	45 m ² / 482.5 sqft	Horizontal + Vertical	Green
Private Seating	20%	36 m ² / 386 sqft	Vertical	Color
Open Space	20%	36 m ² / 386 sqft	Horizontal	Green + Color
Enclosed Space	15%	27 m ² / 289.5 sqft	Horizontal + Vertical	Color
Immersive Space	10%	18 m ² / 193 sqft	Horizontal + Vertical	Green + Color



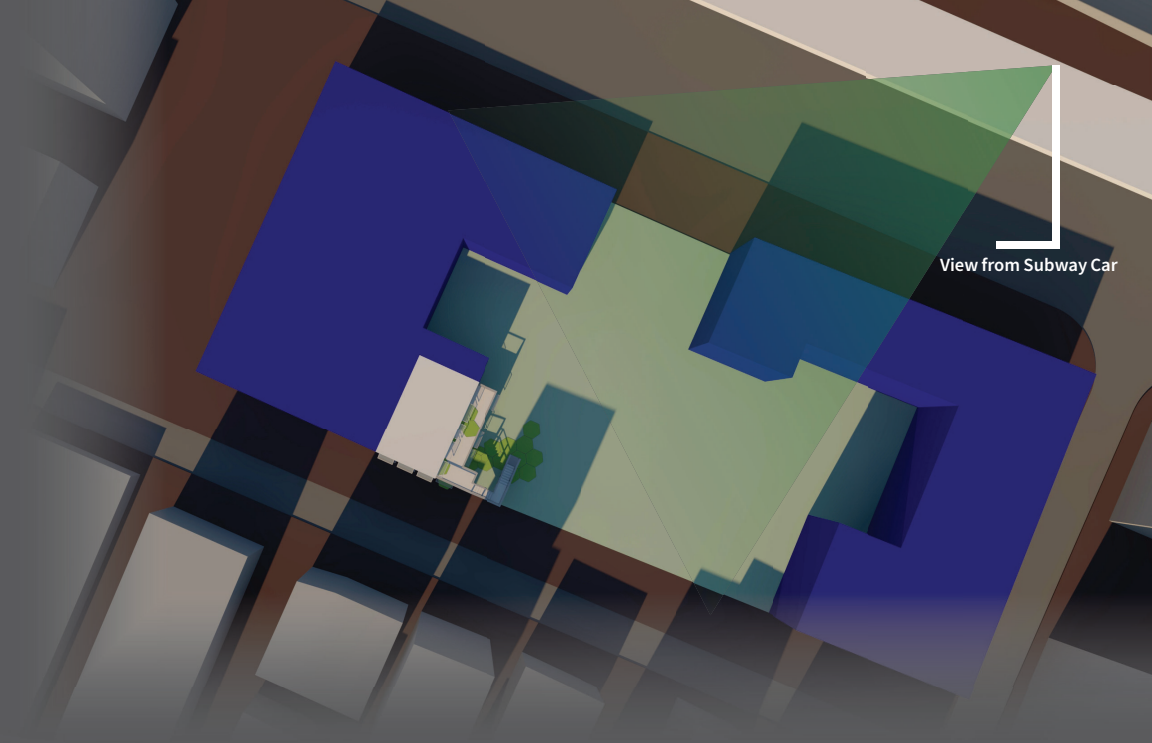
The programs of the space will all be intertwined with one another, meaning each space will come together to create a community within nature. Each floor will have different privacy measures. The first floor will be for a general population area for the users to roam about without the need of privacy. The second floor will be more secluded, however it will not be detached from the space. It will allow for a more intimate time with nature and as well as the surrounding company.



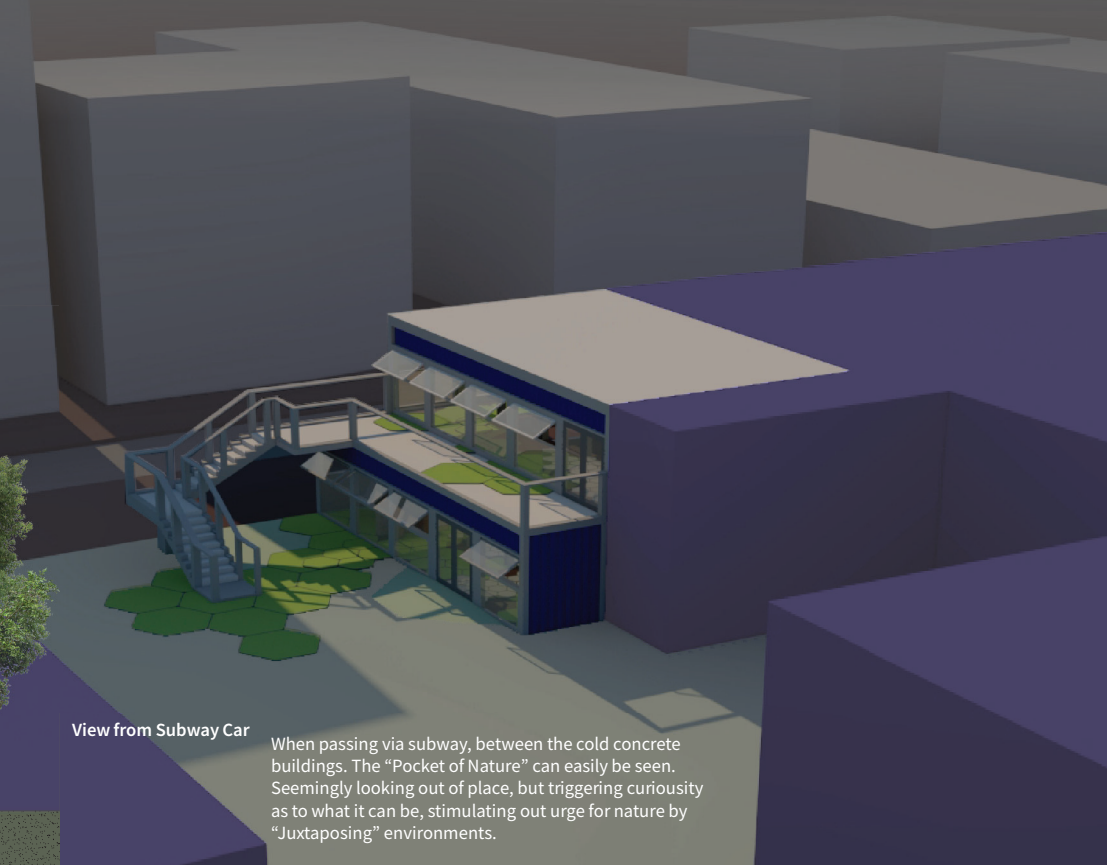
User .

The users of this program will be a majority of younger demographics along with nearby residential users as well. Nearby programs will also provide a larger demographic that will not be as large as younger demographic however, allow a larger demographic scale to access this program.

Juxtaposing Nature Within a City

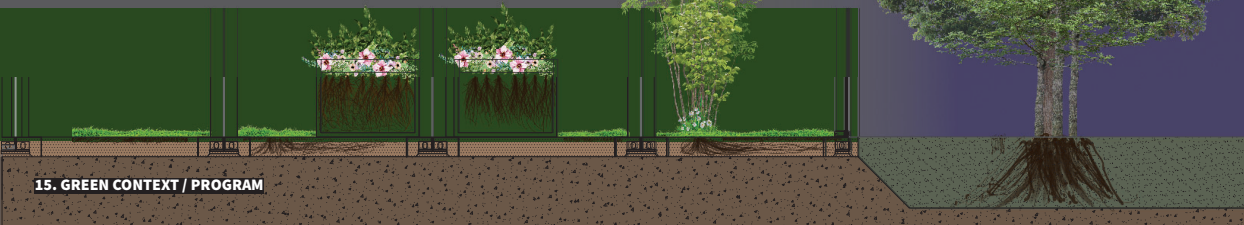


Look deep into nature, and then you will understand everything better. - Albert Einstein

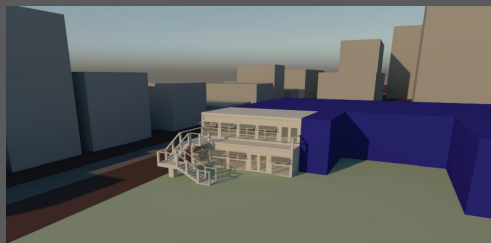


View from Subway Car

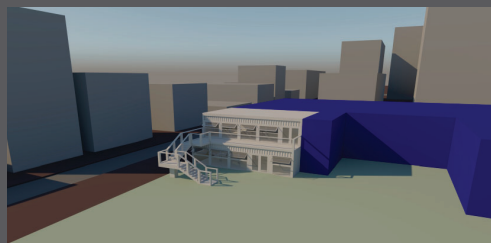
When passing via subway, between the cold concrete buildings. The "Pocket of Nature" can easily be seen. Seemingly looking out of place, but triggering curiosity as to what it can be, stimulating out urge for nature by "Juxtaposing" environments.



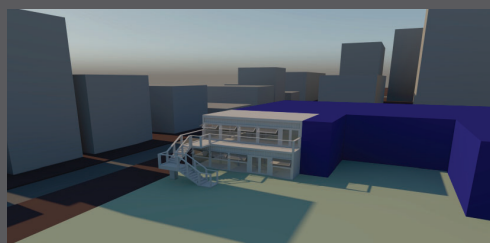
Natural Light



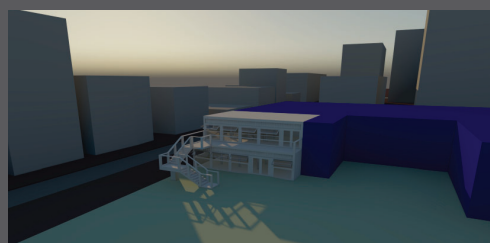
Morning



Noon



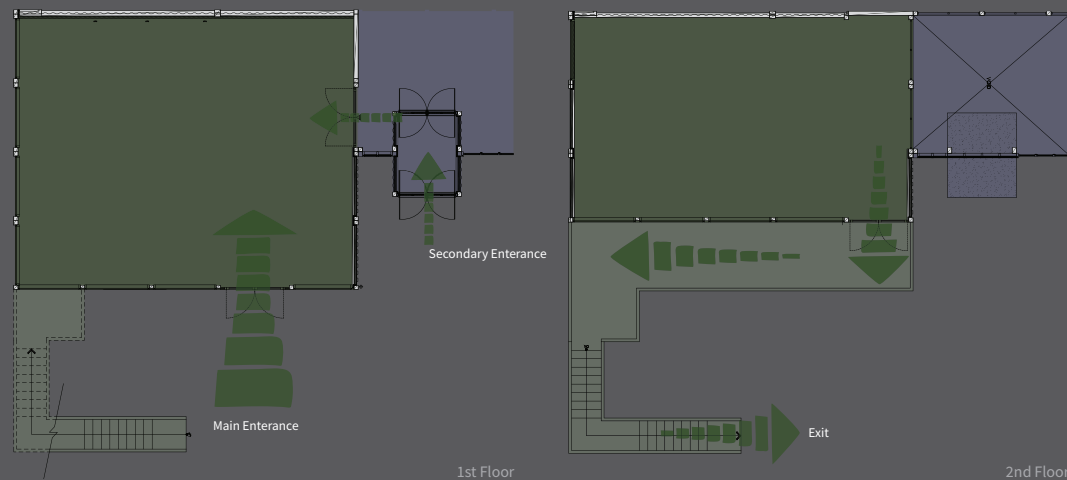
Afternoon



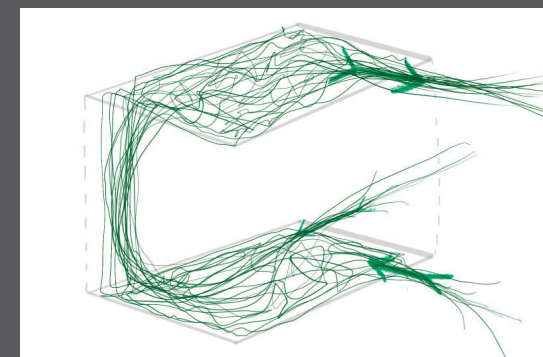
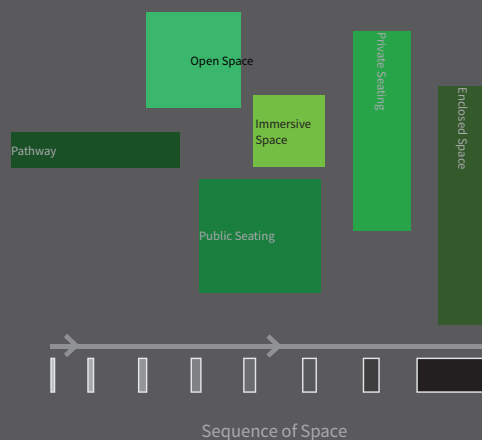
Late Afternoon



Circulation of Space

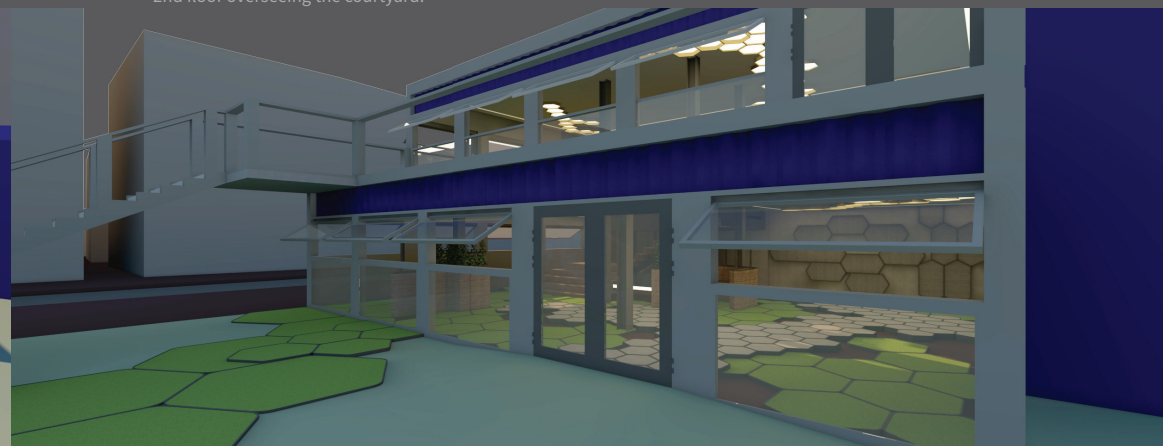
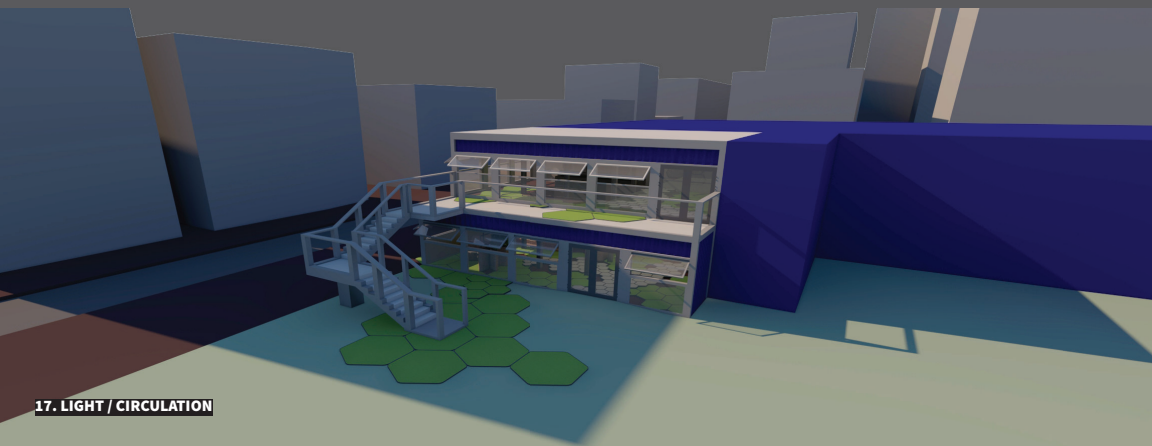


The users of the space will enter only through the first floor. Allowing for a sequential experience that is intended. The exit will be located on the second floor which oversees the courtyard that is the beginning and end simultaneously.



Vertical Movement

The view is overlooking the entrance and exit sequence. As the users would enter through the 1st floor main entrance and move throughout the space, moving vertically to the second floor and lastly exiting through the 2nd floor overseeing the courtyard.



Designing Nature



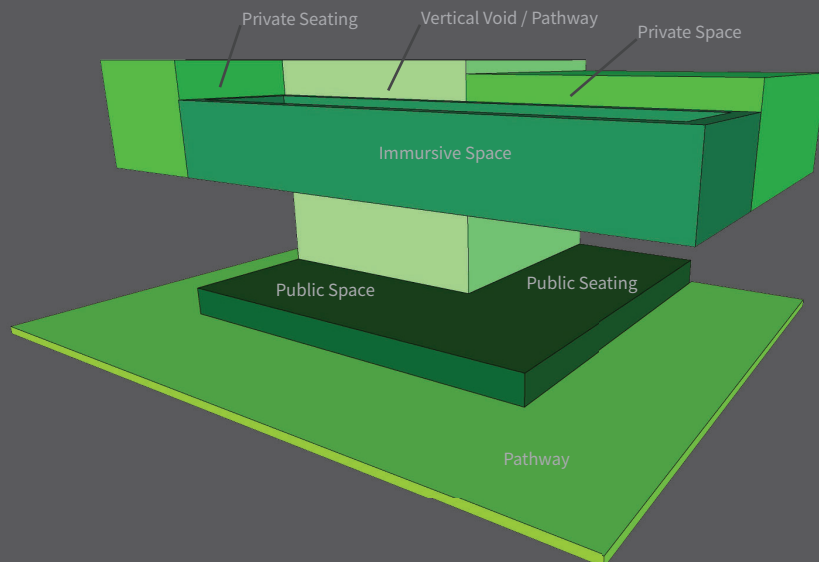
Center Void

The central void allows for the vertical connection to be enclosed by the 2F slab, allowing for a immersive experience of nature overall.

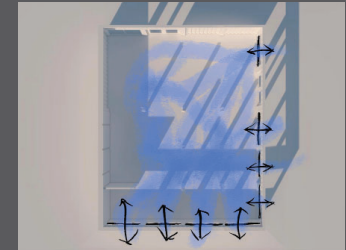
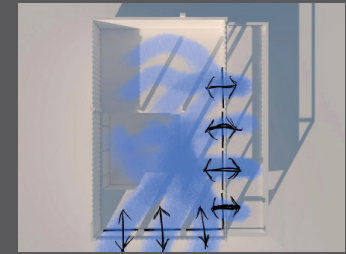
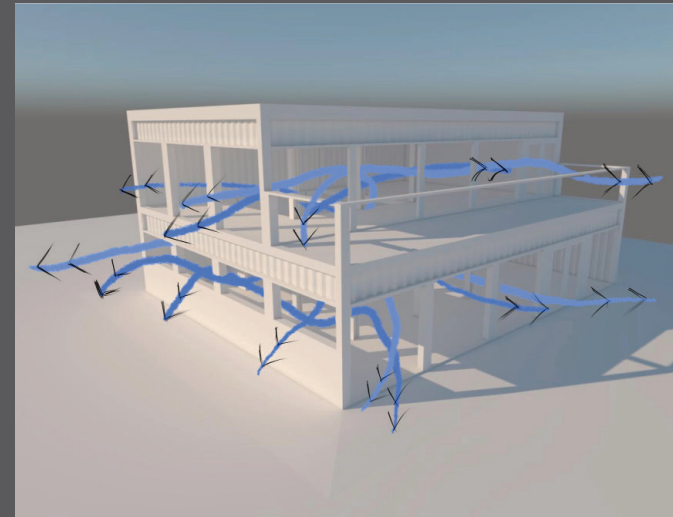
Pros

Private 1st Floor / Catwalk (private) 2nd Floor / Central Vertical Circulation / Platform creates different mood

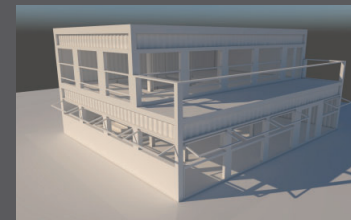
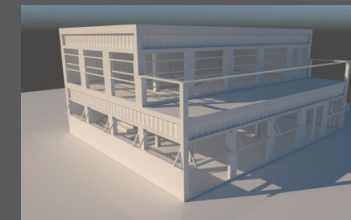
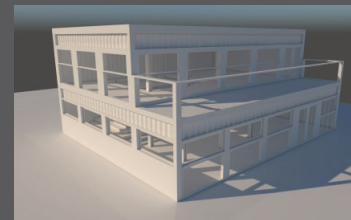
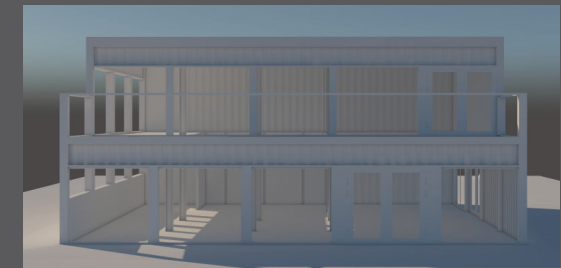
This layout allows for a larger visual of the space, allowing for a visually larger, wider space. This design also allows for a balcony layout for each floor.



Air Circulation



The air circulation will be independant from each floor, meaning that each individual floor can circulate seperately. The windows will allow for air, but also act as a balcony for the private areas.

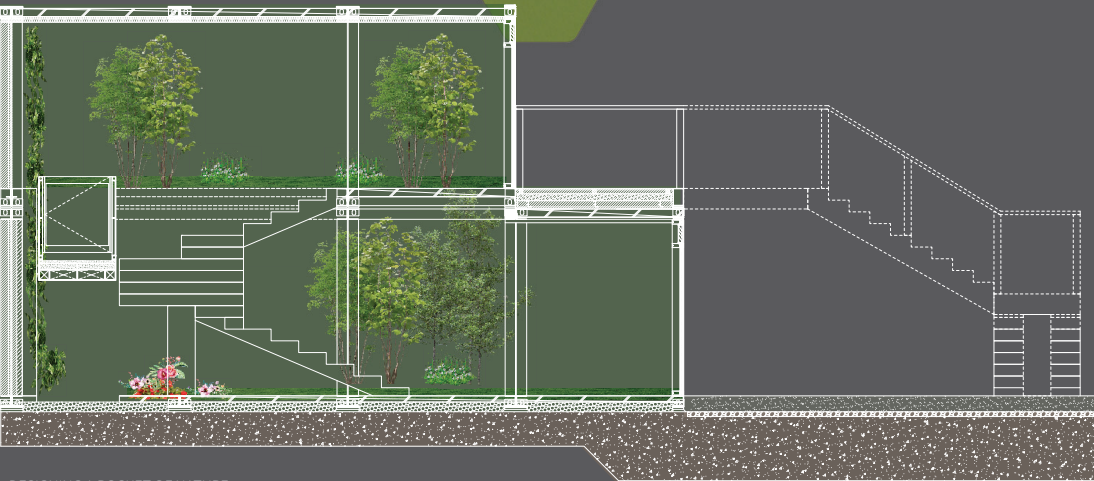
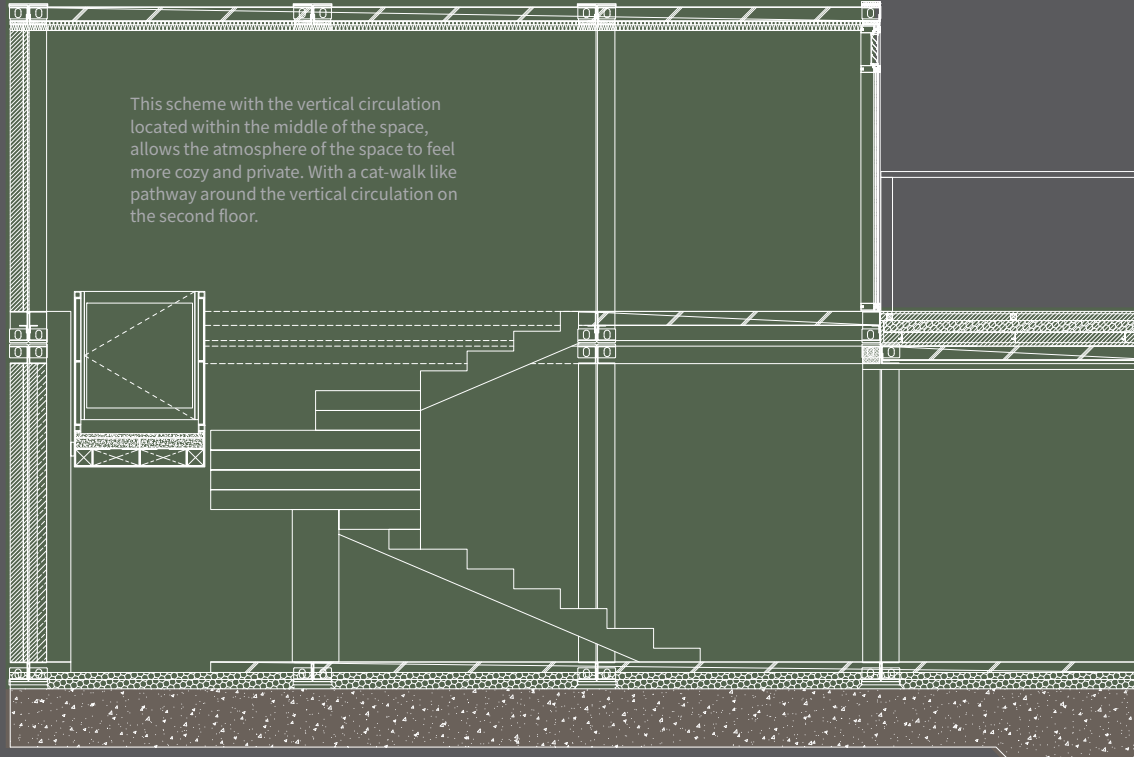
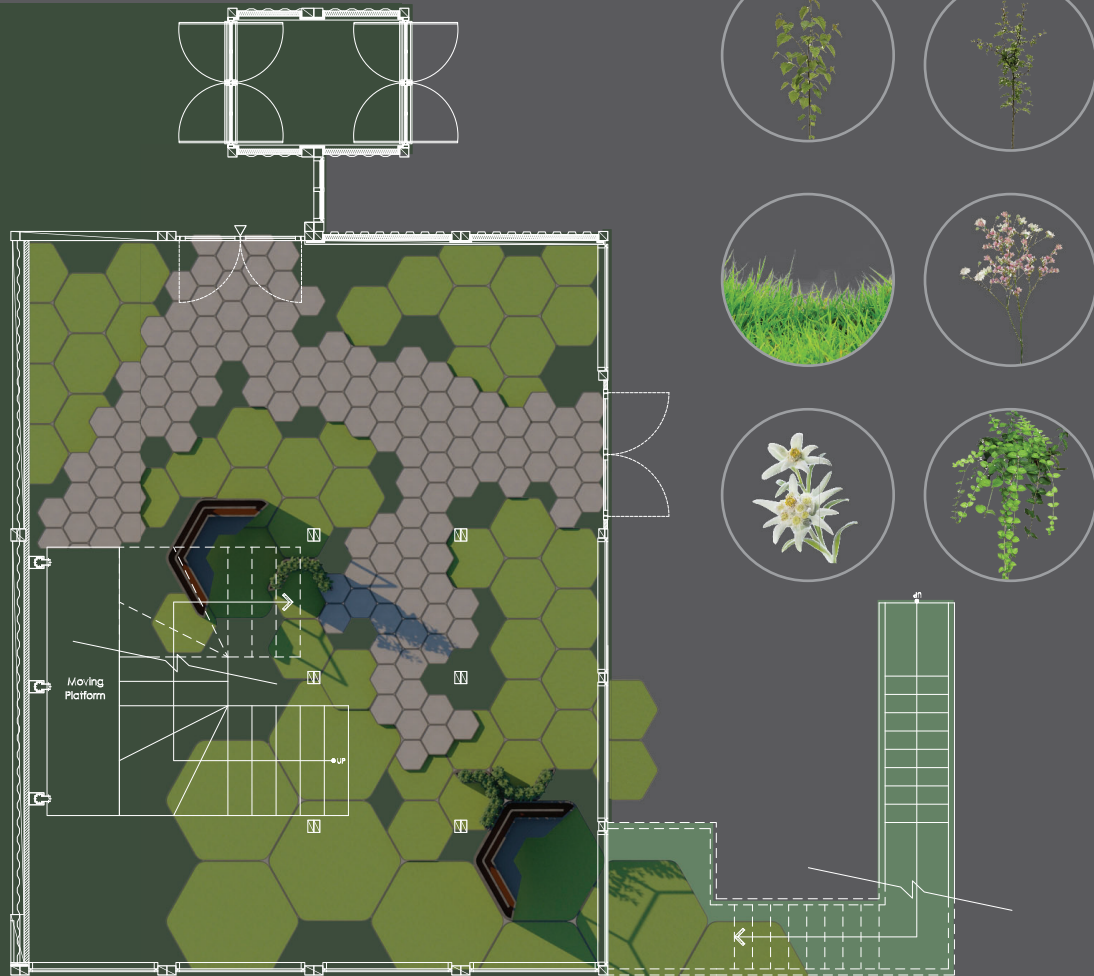


Closed

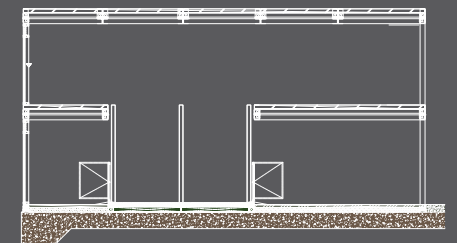
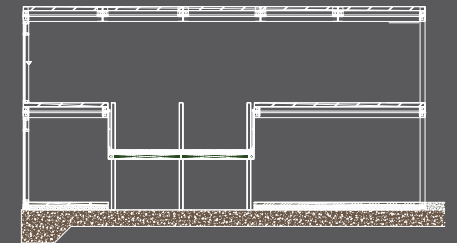
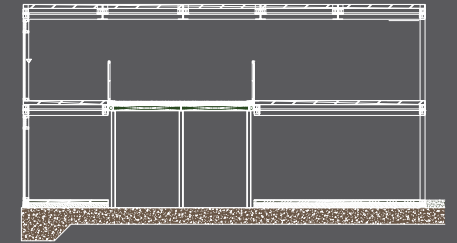
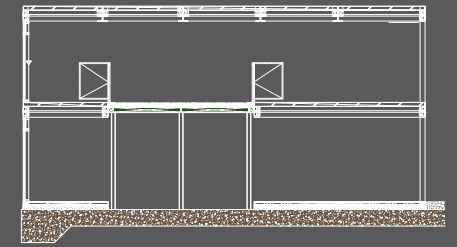
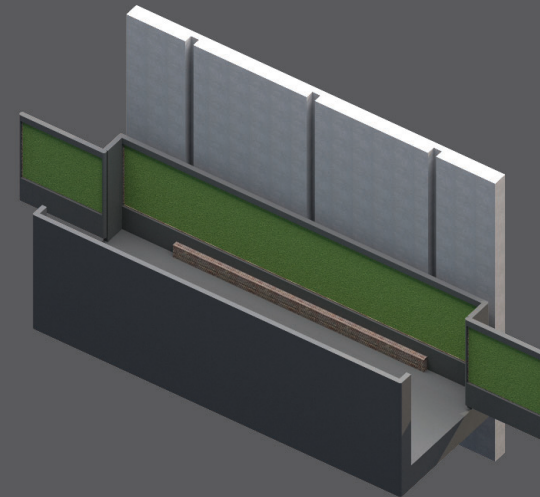
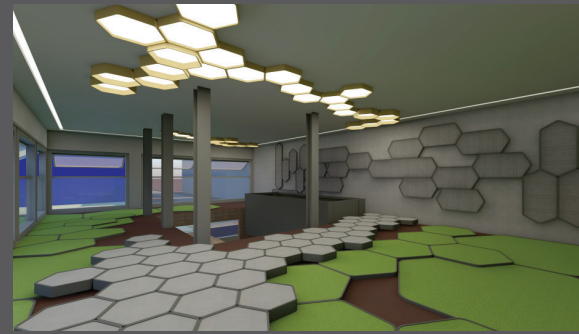
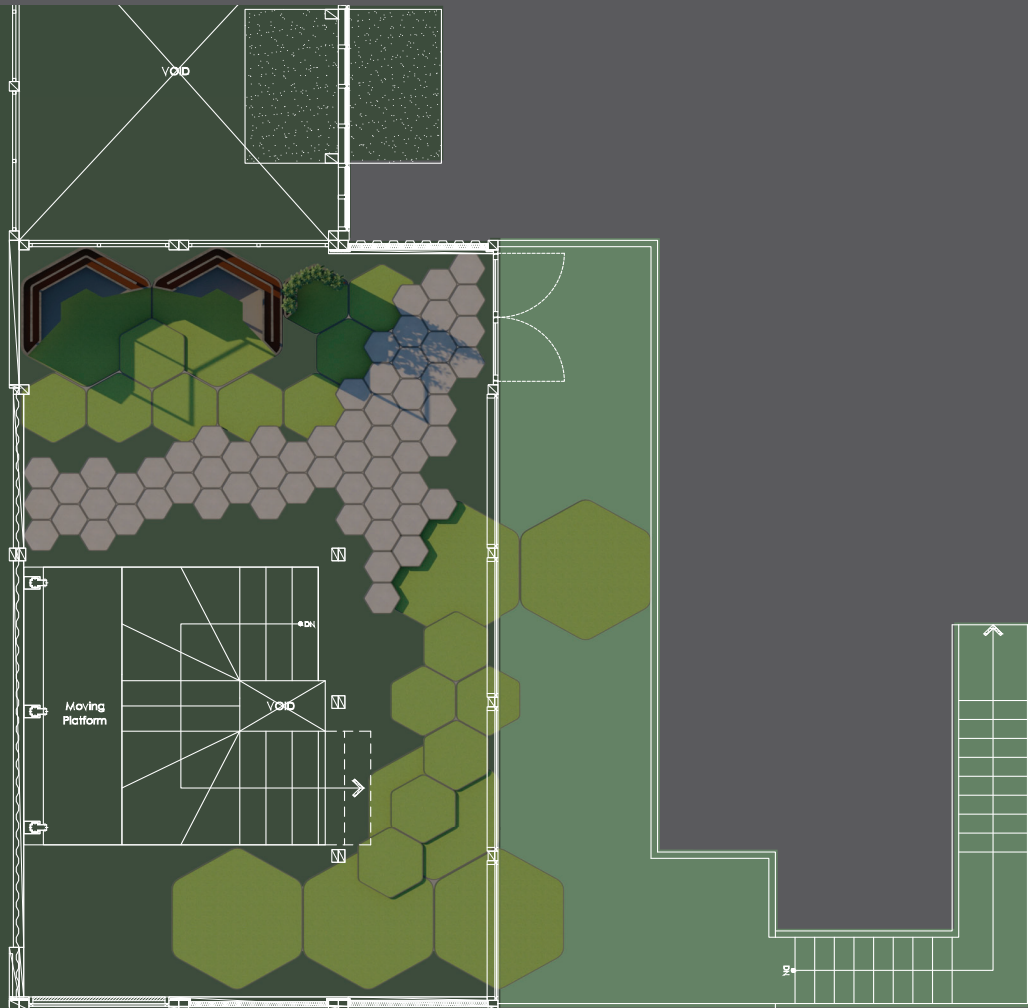


Open

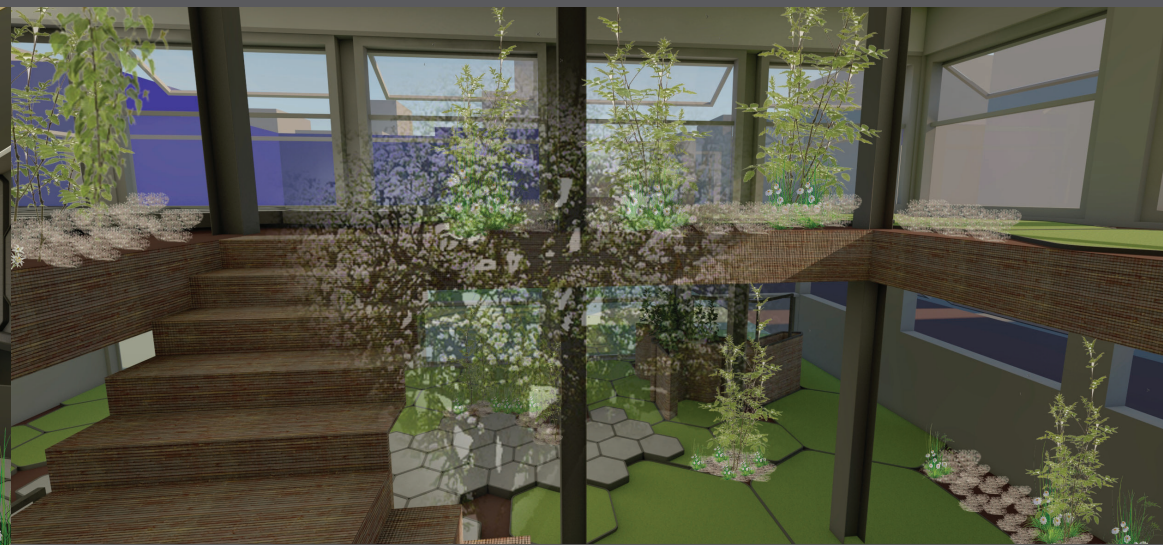
1st Floor Design



2nd Floor Design



The connection between the 1st and 2nd floor will not only connect the space, but the connection of nature as well.





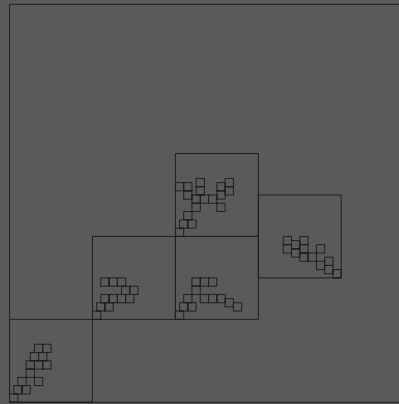
Various Vegetation

Diffused Natural Light

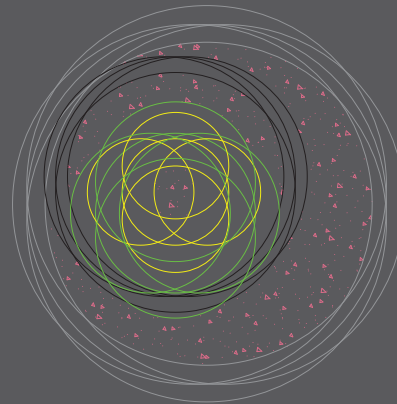
Sensory Stimuli

Shelter and Structure

We live in a world where we are deprived from nature's nurture, we don't realize how much we have pushed it away to further advance into the future. However, this has not only slowly pushed nature out of our urban environment, but the lack of nature has since allowed us as humans to lose our connection between nature as well. This thesis will further explore and experiment with nature and its specific elements that bond together to create a surround of nature experience.



Community Build-Up



Coexisting Ecosystems

here are multitudes of different elements that come together to create a biophilic interior. A biophilic interior consists of multiple different elements that ultimately come together as a whole to create the intended experience.



Bringing nature into space. The visual aspect as well as sense of smell; soil, moisture and plant. Creating a sense of being enclosed by nature.



The use of wood, which is a natural material, creates warmth through sense of touch.

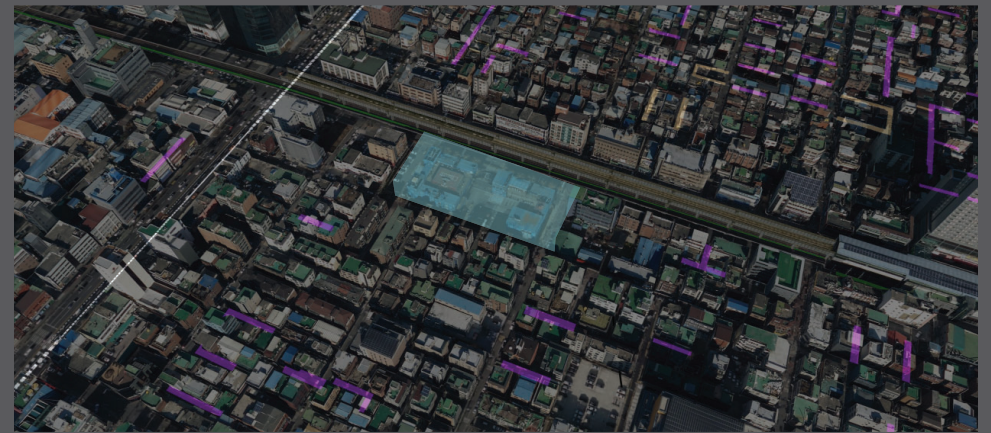


Natural light brings in the physical sense of warmth as well as a visual cue of warmth.

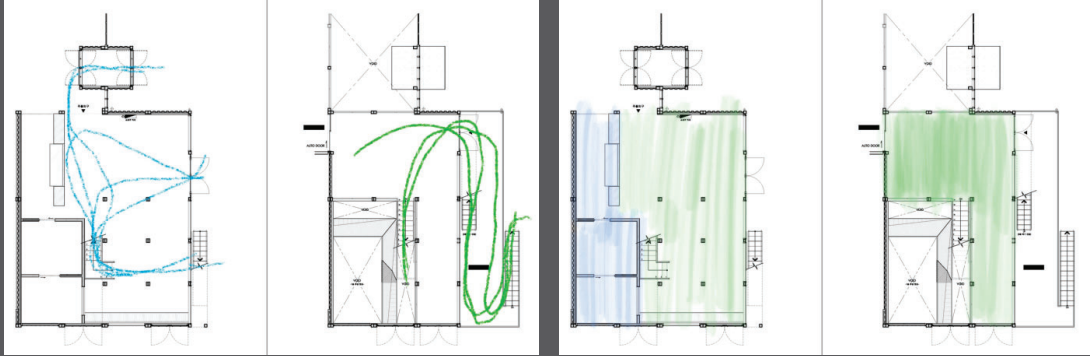
ADDITIONAL SITE INFORMATION



Height of nearby structures



Site Restricted Circulation (Too narrow / Obstructed / Construction etc)



- MACRO**
- . Located between high traffic areas
 - . Adjacent University (Kunkook University)
 - . Seoul Children's Zoo

- MICRO**
- . Raw material (URBAN)
 - . Multi-level (Vertical Space)
 - . Enclosed by other programs
 - . Multiple Entry Points

SQFT

Total	1,880 sqft (175m2)
1F	820 sqft (76m2)
2F	1,060 sqft (99m2)



