

**KELLY WEISS**

INTERIOR DESIGN

## DESIGNER STATEMENT

THROUGHOUT THIS PORTFOLIO YOU WILL FIND SOME OF MY RECENT WORK SHOWCASING MY TALENTS AS AN INTERIOR DESIGNER. FOR THE COMPLETION OF ALL PROJECTS, VARIOUS SKILL SETS WERE UTILIZED TO CREATE WORK IN 2D, 3D, AND 4D. TOOLS FOR CREATING IN 2D INCLUDE HAND SKETCHES, AUTOCAD AND PROGRAMS SUCH AS PHOTOSHOP, ILLUSTRATOR, AND INDESIGN WERE UTILIZED. PHYSICAL MODELS OF SPACES WERE EITHER HAND MADE OR MADE UTILIZING A LASER CUTTER. 4D MODELING PROGRAMS SUCH AS REVIT, SLETCUP, AND RHINO, WERE UTILIZED FOR CREATING 3 DIMENSIONAL MODELS OF SPACES.

ENJOY!  
-KELLY

## TABLE OF CONTENTS

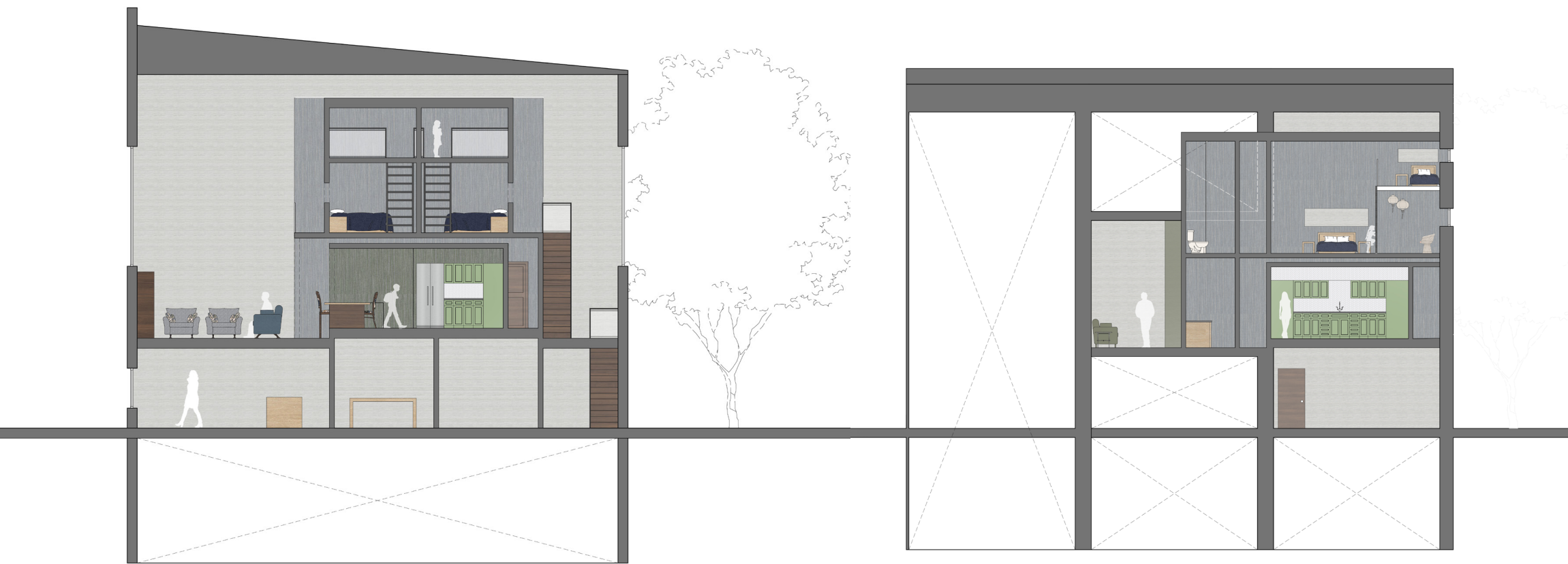
4	FULTON STREET APARTMENT
12	PEPSICO OFFICE BUILDING
20	PACIFIC BRANCH LIBRARY
30	HOUSING WORKS STORE
38	AIRPLANE BOEING 727
48	THE CHUXI TULOU HOSTEL
56	THIS IS NOT OUR LAND

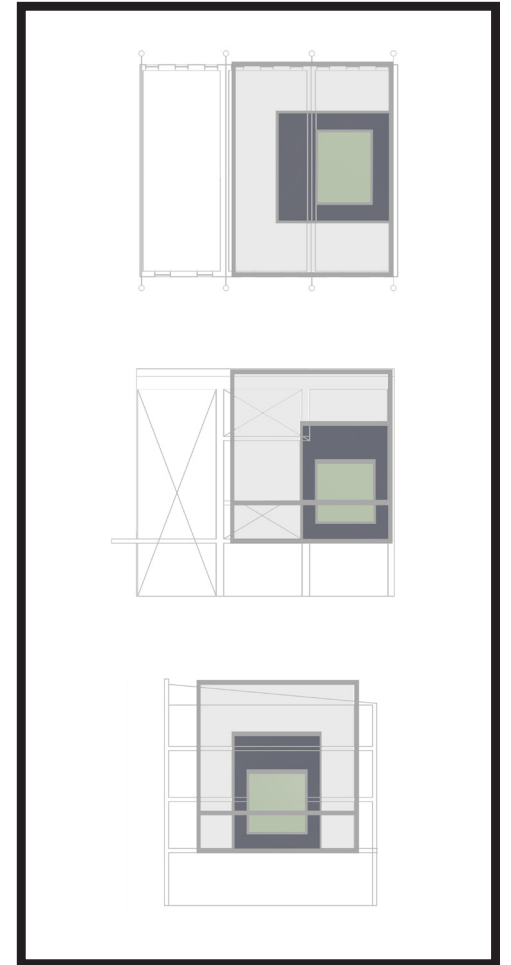
## FULTON STREET APARTMENT

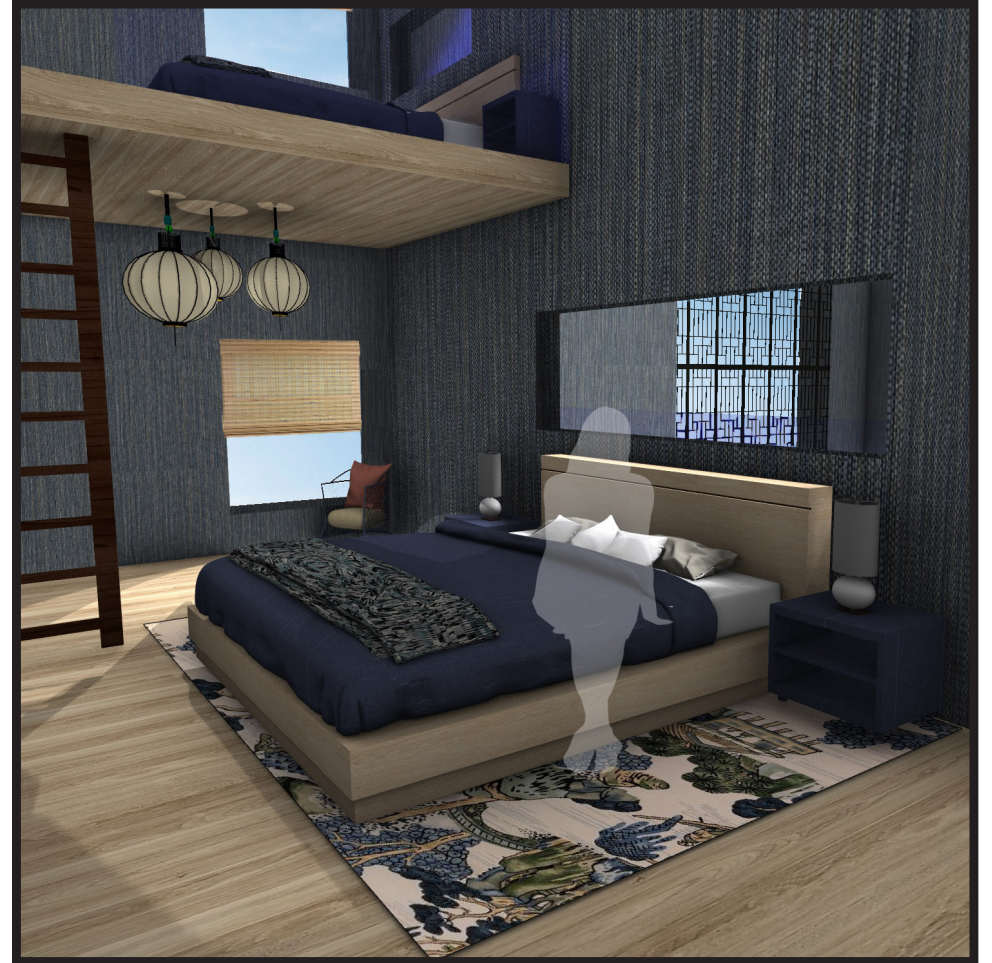
WHEN DESIGNING THIS PROJECT, I WAS ASKED TO CREATE AN APARTMENT FOR A MULTIGENERATIONAL FAMILY IN BROOKLYN, NEW YORK. IN THE APARTMENT, VARIOUS FLOOR PLATES WERE ABLE TO BE UTILIZED. AS SHOWN IN THE DIAGRAM TO THE RIGHT, I UTILIZED FOUR DIFFERENT FLOOR PLATES.

MY CLIENTS WERE THE WANG – ZHOU FAMILY, A CHINESE FAMILY RELOCATING TO BROOKLYN FOR A FRESH START. FOR THIS PROJECT, I UTILIZED A NESTING CONCEPT AND NESTED DIFFERENT PROGRAMS IN THE SPACE. THERE ARE DIFFERENT NESTED AREAS IN BOTH THE FLOOR PLANS AND ELEVATIONS OF THE SPACE. TO ACHIEVE THIS NESTING CONCEPT I MADE A BOX WITHIN A BOX FOR MY SPATIAL PROGRAM.





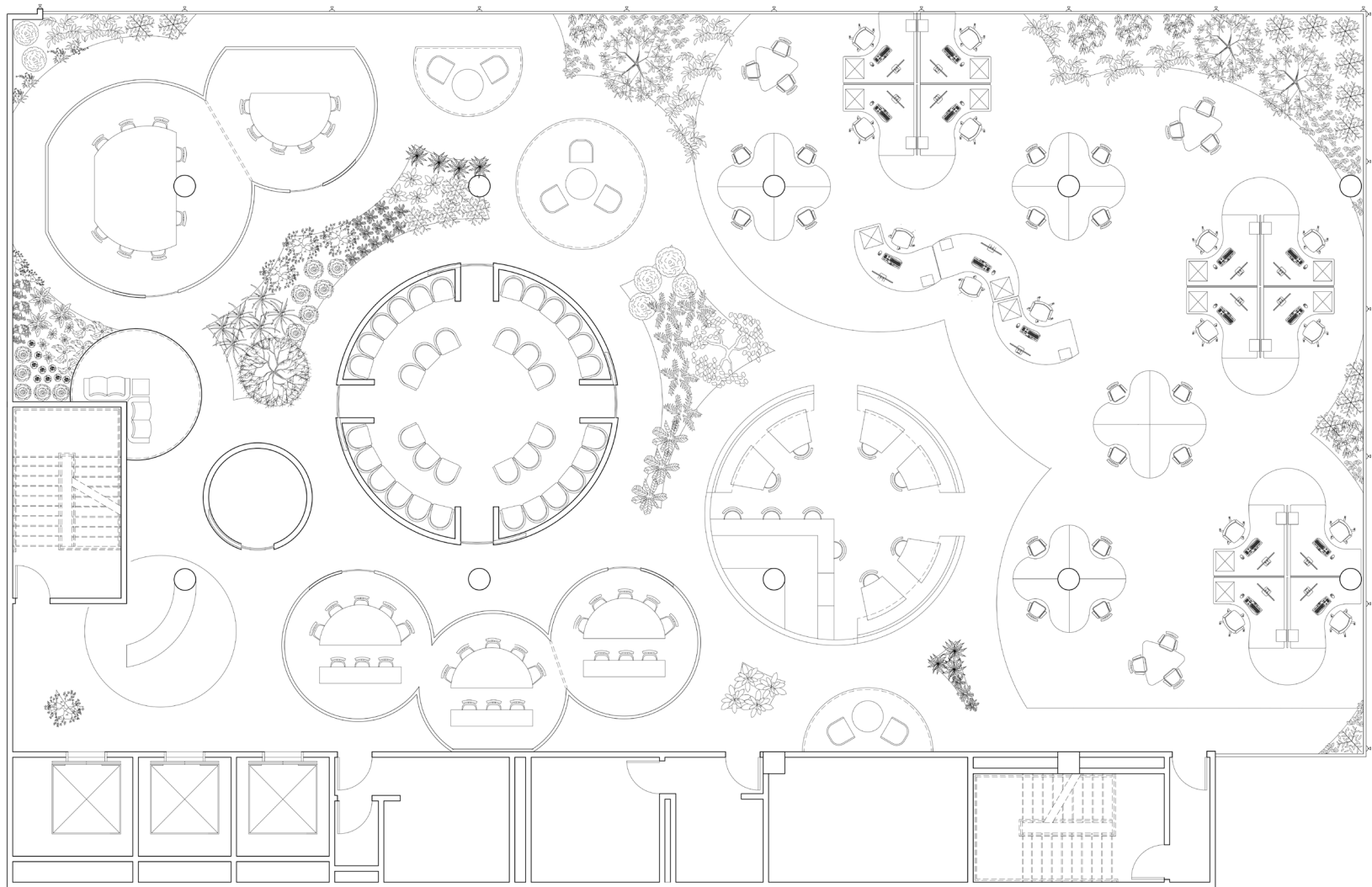


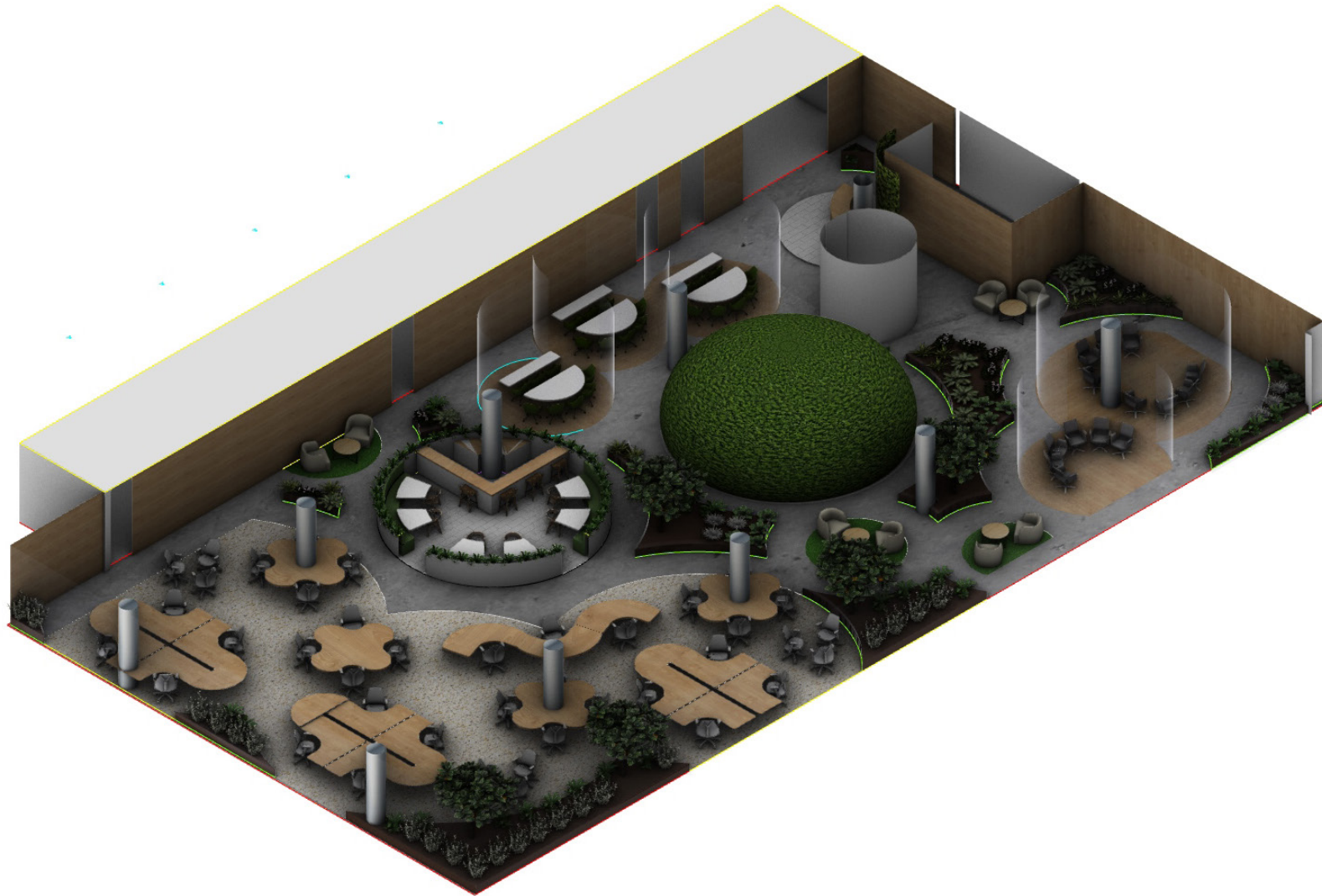


## PEPSICO OFFICE BUILDING

THE CONCEPT OF THE PEPSI CO OFFICE SPACE IS TO ENCOORPORATE PLANTS INTO THE OFFICE. THIS WILL ABIDE BY THE “WELL STANDARD” BY CREATING A HOLISTIC WORK PLACE. THE DESIGN IS ALSO SUSTAINABLE AND WILL CONTRIBUTE TO THE UNITED NATIONS 7TH SUSTAINABILITY GOAL. THE PLANTS IN THE OFFICE WILL PRODUE CROPS THAT WILL BE DONATED TO LOCAL FOOD BANKS TO HELP END WORLD HUNGER.





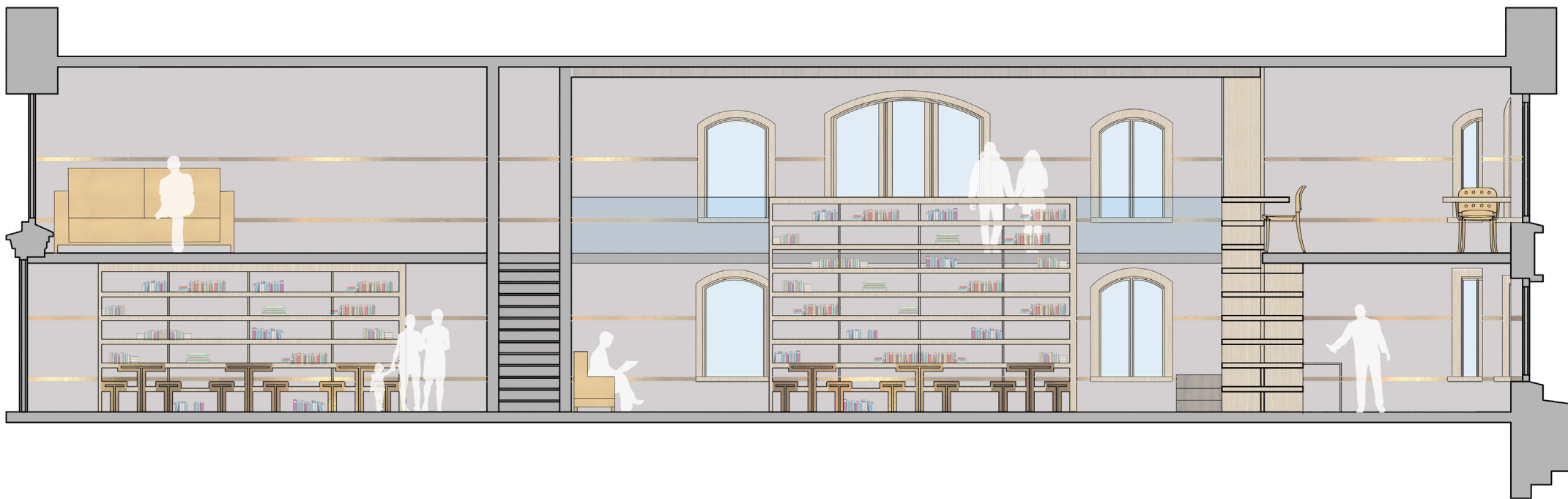


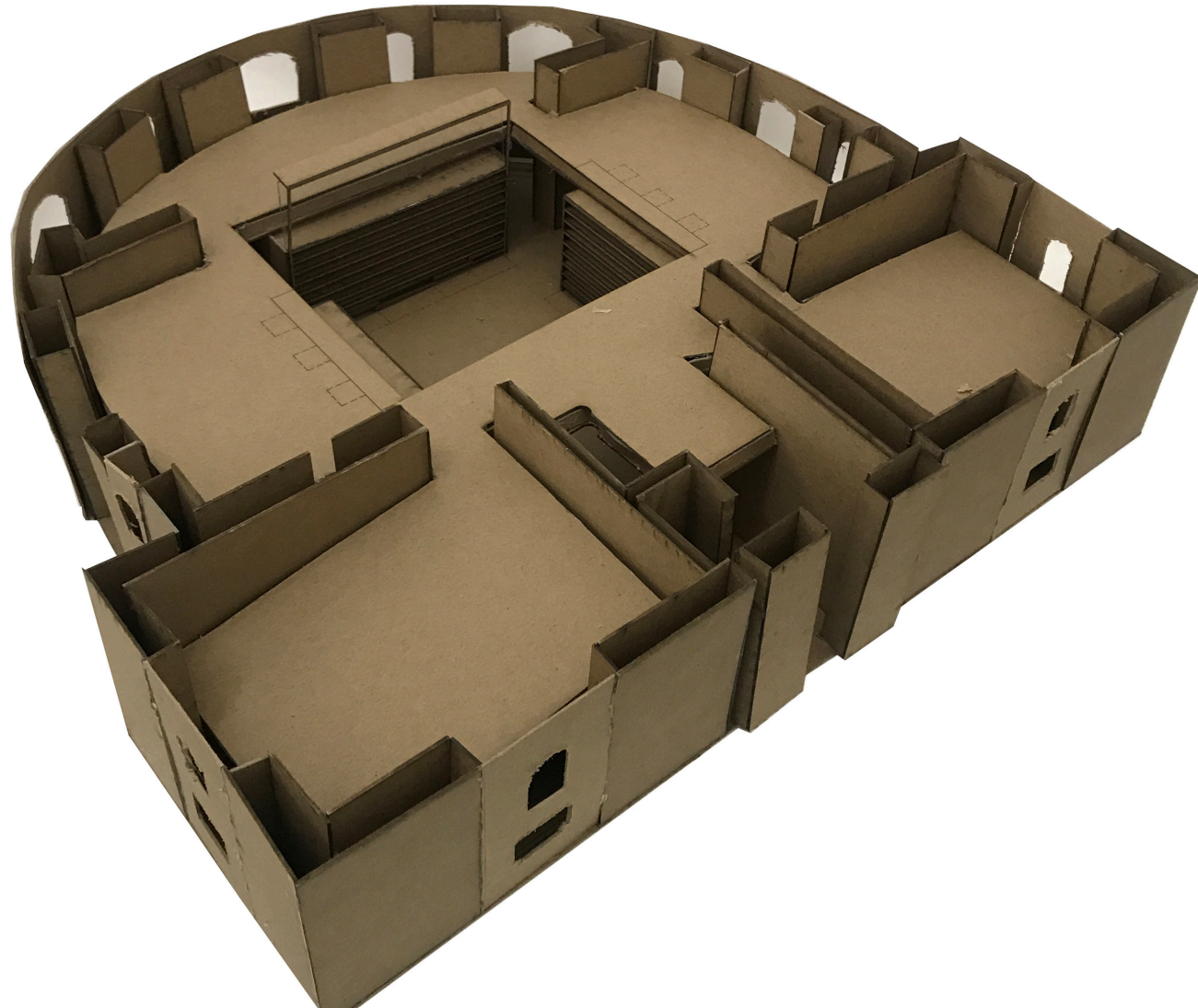


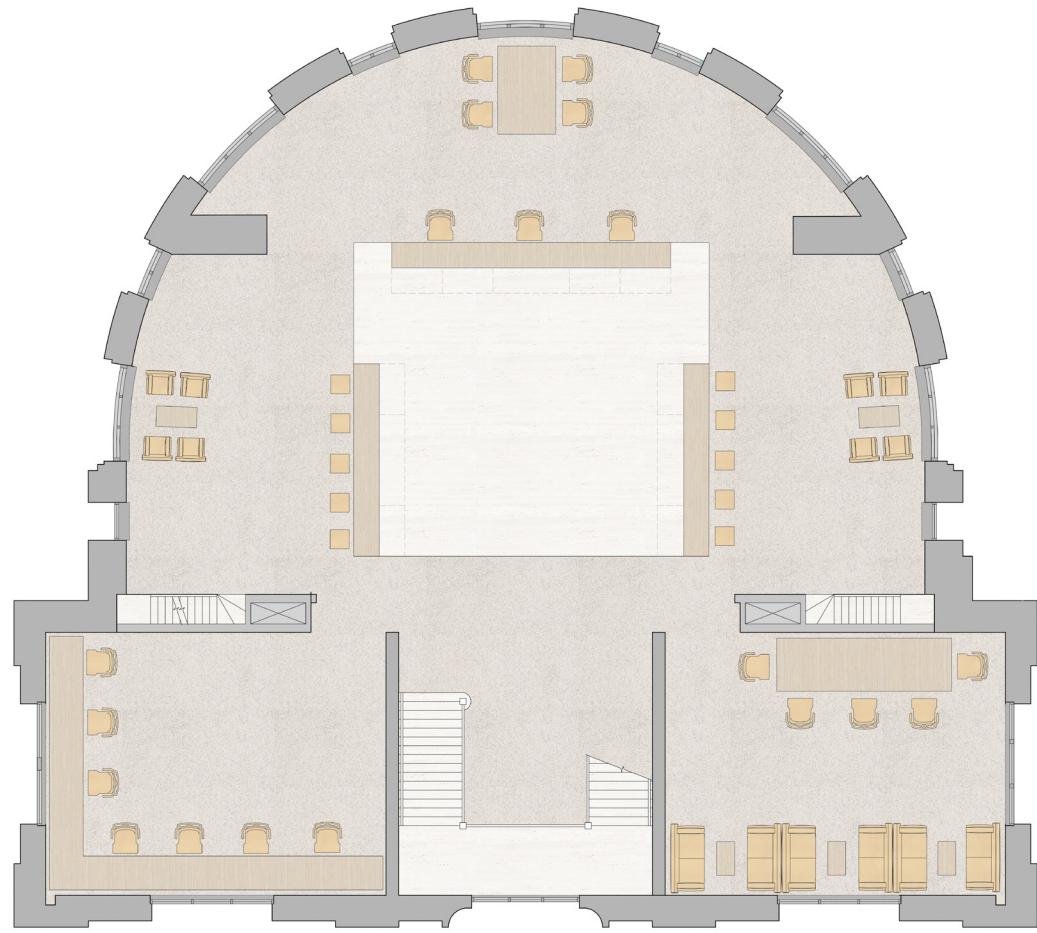
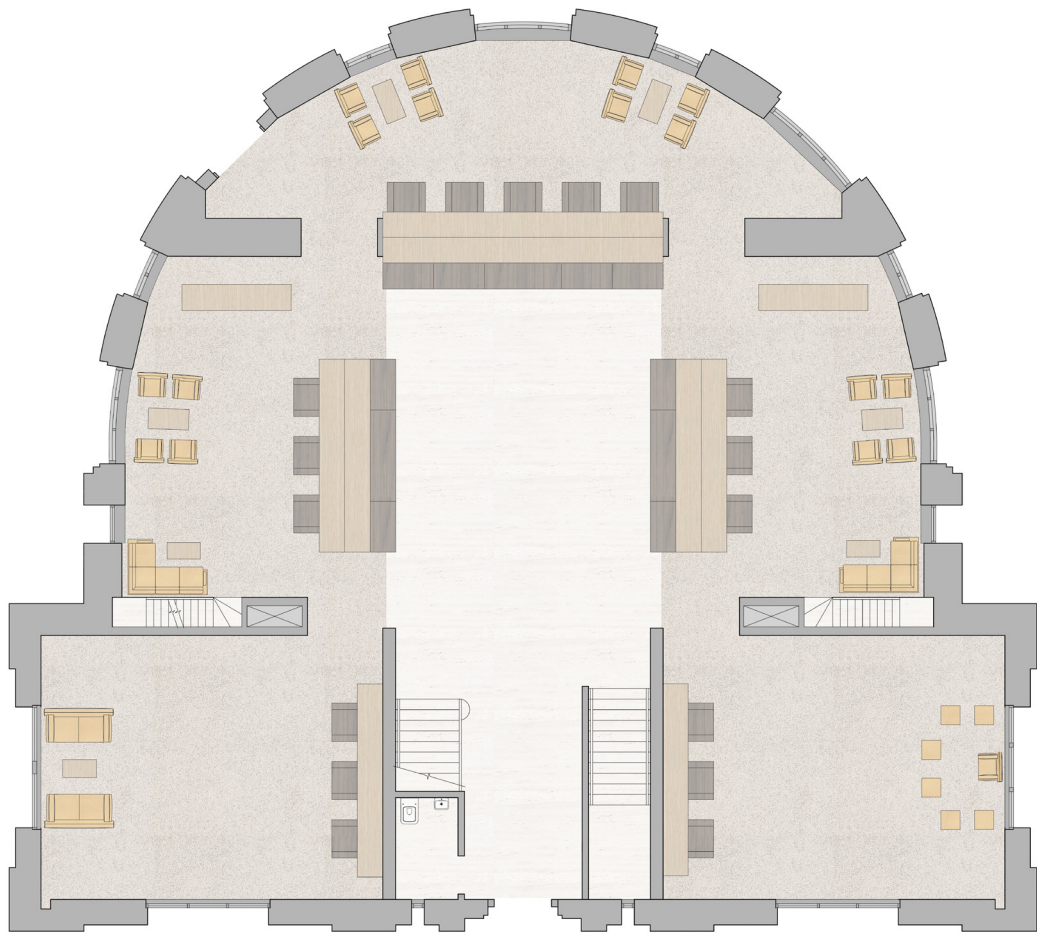
## PACIFIC BRANCH LIBRARY PROJECT

WHILE STUDYING USERS OF A LIBRARY, IT WAS NOTICED THAT PEOPLE OFTEN HAVE A DIFFICULT TIME REACHING BOOKS LOCATED ON HIGH SHELVES. THROUGH THIS, I DESIGNED A FURNITURE SYSTEM THAT SERVED AS A BOOKSHELF, WITH STAIRS THAT COULD BE PULLED OUT FROM THE SHELF. THIS HELPED PEOPLE GET TO HARD TO REACH PLACES, AND IT ALSO SERVES AS A COMMUNAL SPACE, AS PEOPLE COULD SIT ON THE STAIRS AND ENJOY THEIR READINGS. I ALSO DEVELOPED A SYSTEM WHERE TABLES AND BENCHES COULD ALSO BE PULLED OUT FROM THE SHELVES. HERE, PEOPLE COULD WORK INDIVIDUALLY OR WITH MULTIPLE OTHER PEOPLE. THIS FURNITURE PROGRAM ALLOWS GUESTS A FLEXIBLE FURNITURE ARRANGEMENT TO MAXIMIZE THEIR EXPERIENCE IN THE LIBRARY AND OFFER THEM A PUBLIC OR PRIVATE SPACE TO WORK. THIS FURNITURE PIECE WAS INTEGRATED THROUGHOUT THE LIBRARY TO BETTER ACCOMMODATE THE COMMUNITY WITHIN THE LIBRARY.







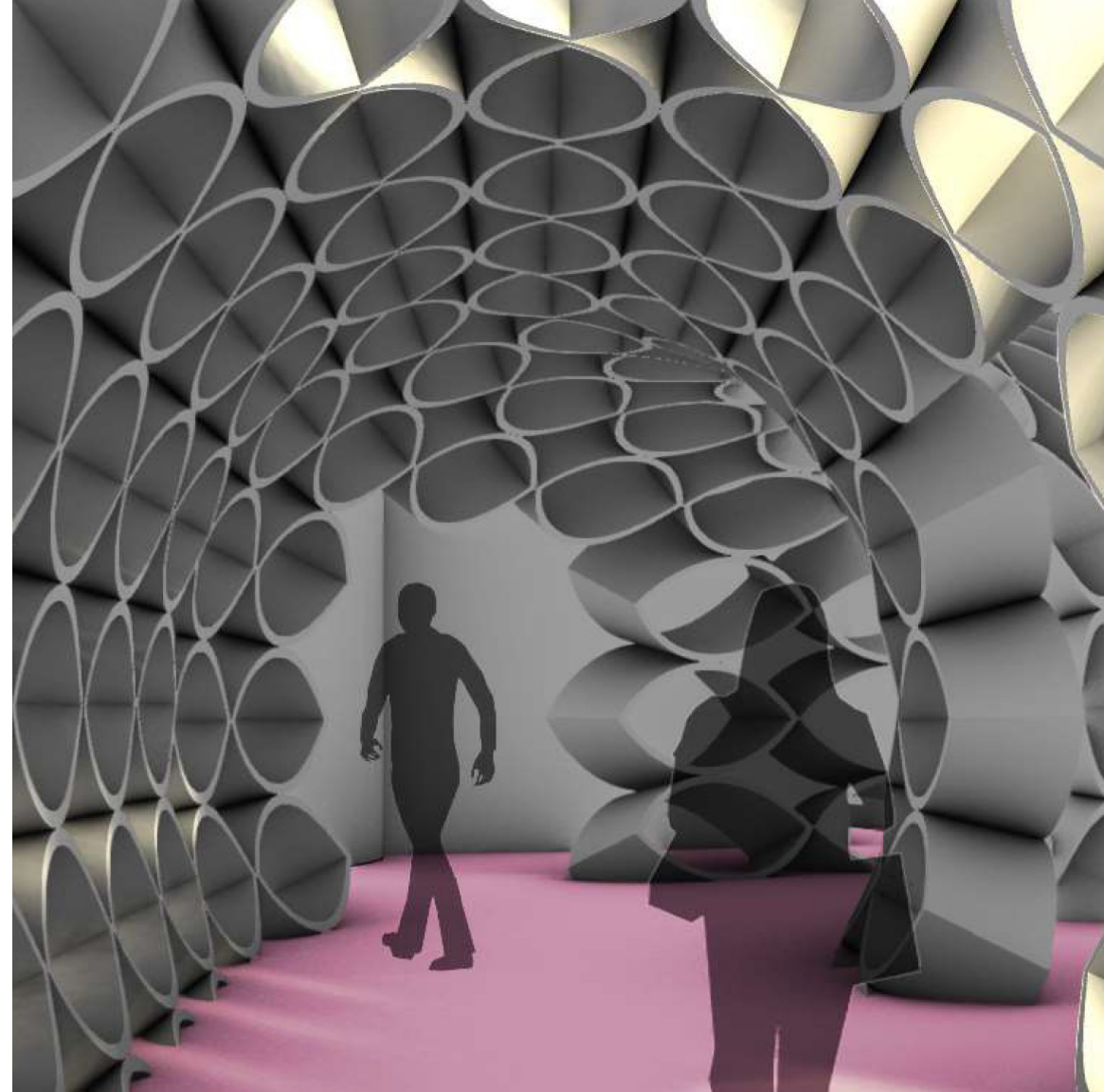


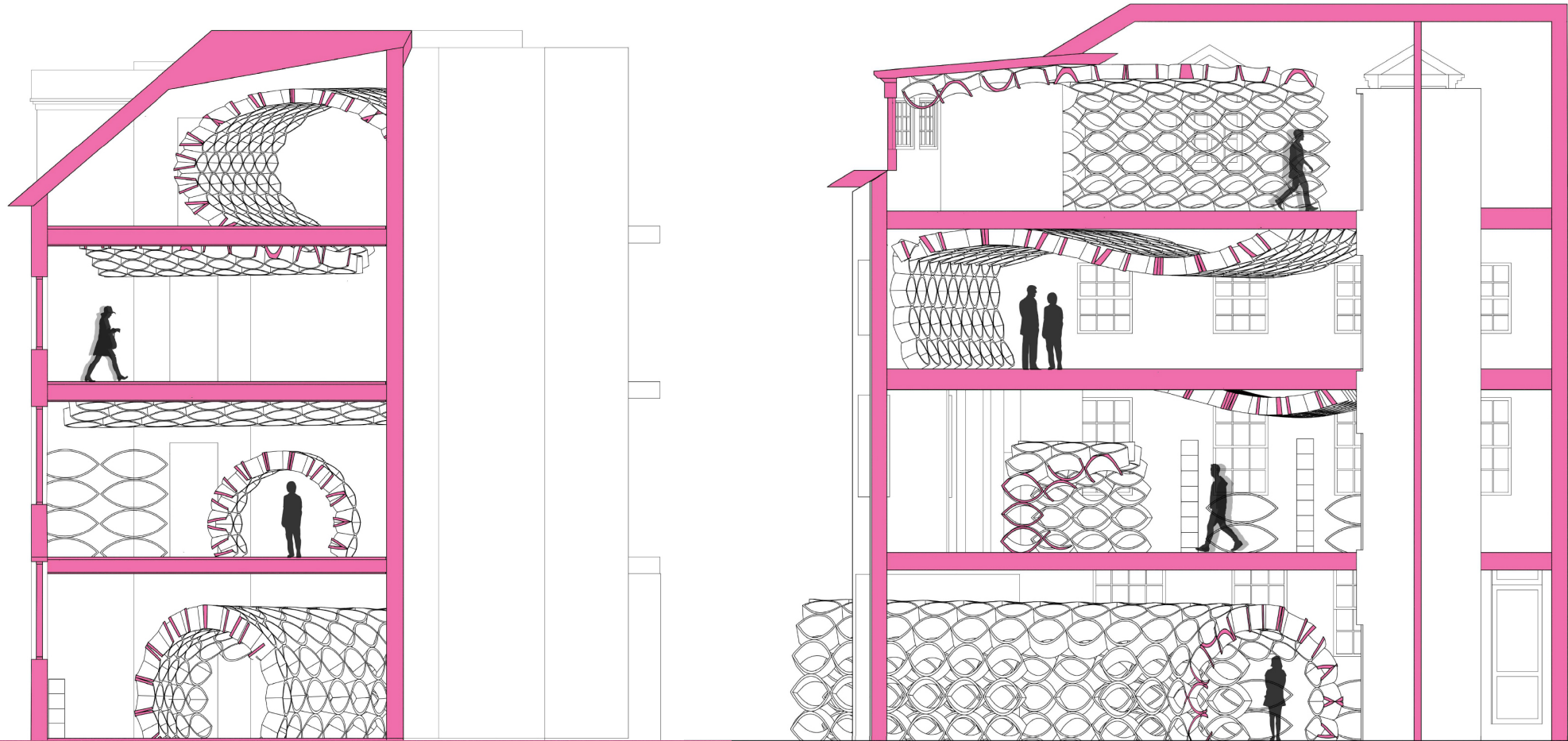


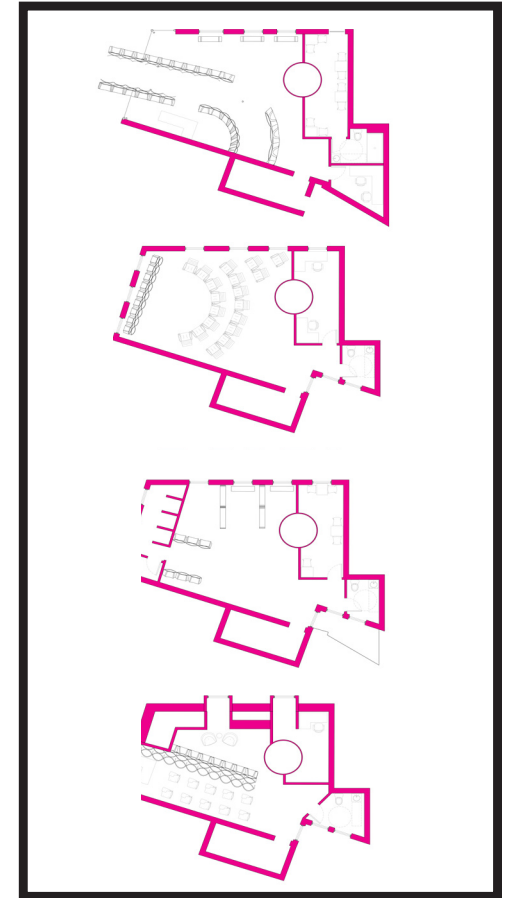
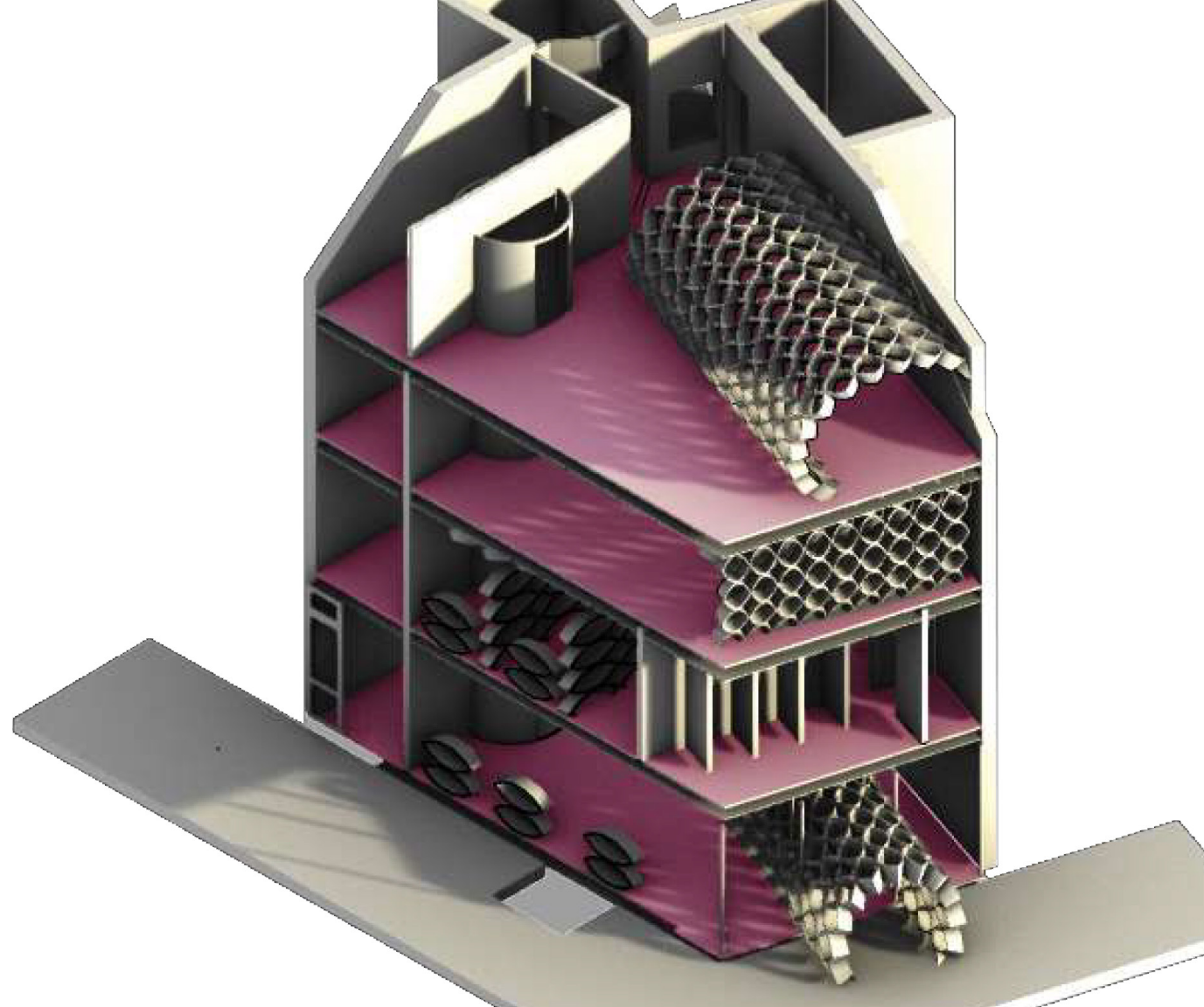
## HOUSING WORKS STORE

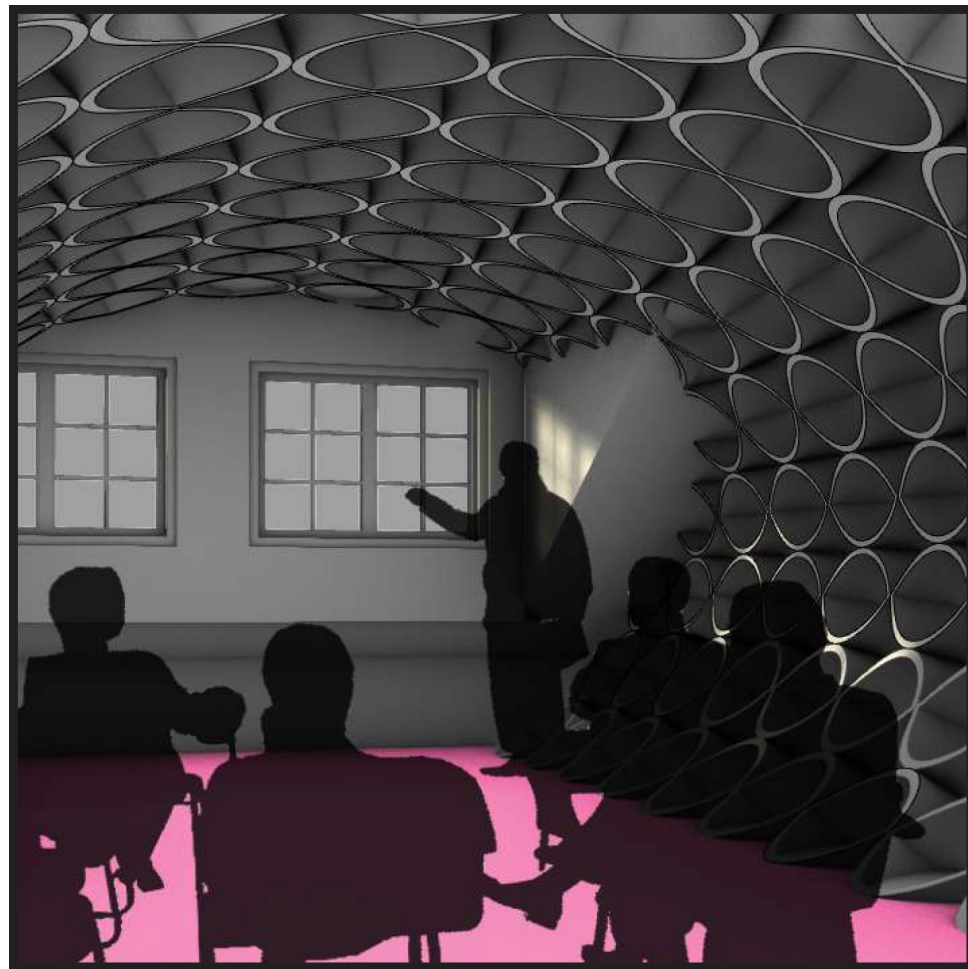
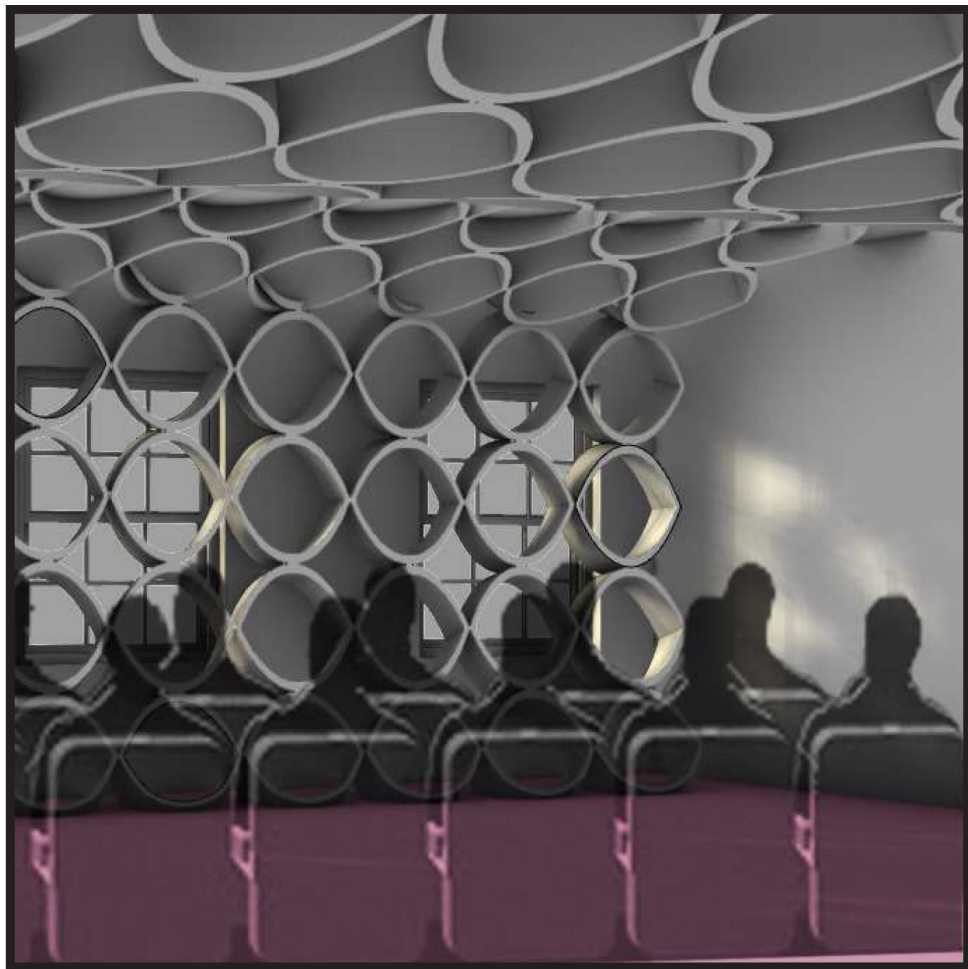
HOUSING WORKS IS A NON-PROFIT ORGANIZATION THAT SUPPORTS CHARITIES FOR AIDS, HIV, AND HOMELESSNESS. I WAS GIVEN A SITE IN GREENWICH, NEW YORK TO VISIT AND DESIGN. THIS STORE IS AN EXISTING STARBUCKS, BUT WILL BE CONVERTED INTO A THRIFT SHOP FOR HOUSING WORKS, AS THEY RECEIVE THEIR DONATIONS FROM THRIFT STORES, LIBRARIES, AND CAFES. WITHIN THE STORE, AN EDUCATIONAL SERVICE MUST BE ADDED TO THE PROGRAM TO INFORM PEOPLE ABOUT HIV AND AIDS.

IN THE BEGINNING PROCESS OF THIS PROJECT, I WAS ASKED TO CREATE A BOUNDARY OR SYSTEM BASED OFF OF A WORD THAT DESCRIBED HOUSING WORKS MISSION. I CHOSE THE WORD "LIBERATE" BECAUSE HOUSING WORKS IS LIBERATING TO PEOPLE WHO ARE STRUGGLING WITH AIDS, HIV, OR HOMELESSNESS. THE BOUNDARY WAS PLACED THROUGHOUT THE STORE TO EXUDE THE LIBERATING FEELING THROUGHOUT THE SPACE.



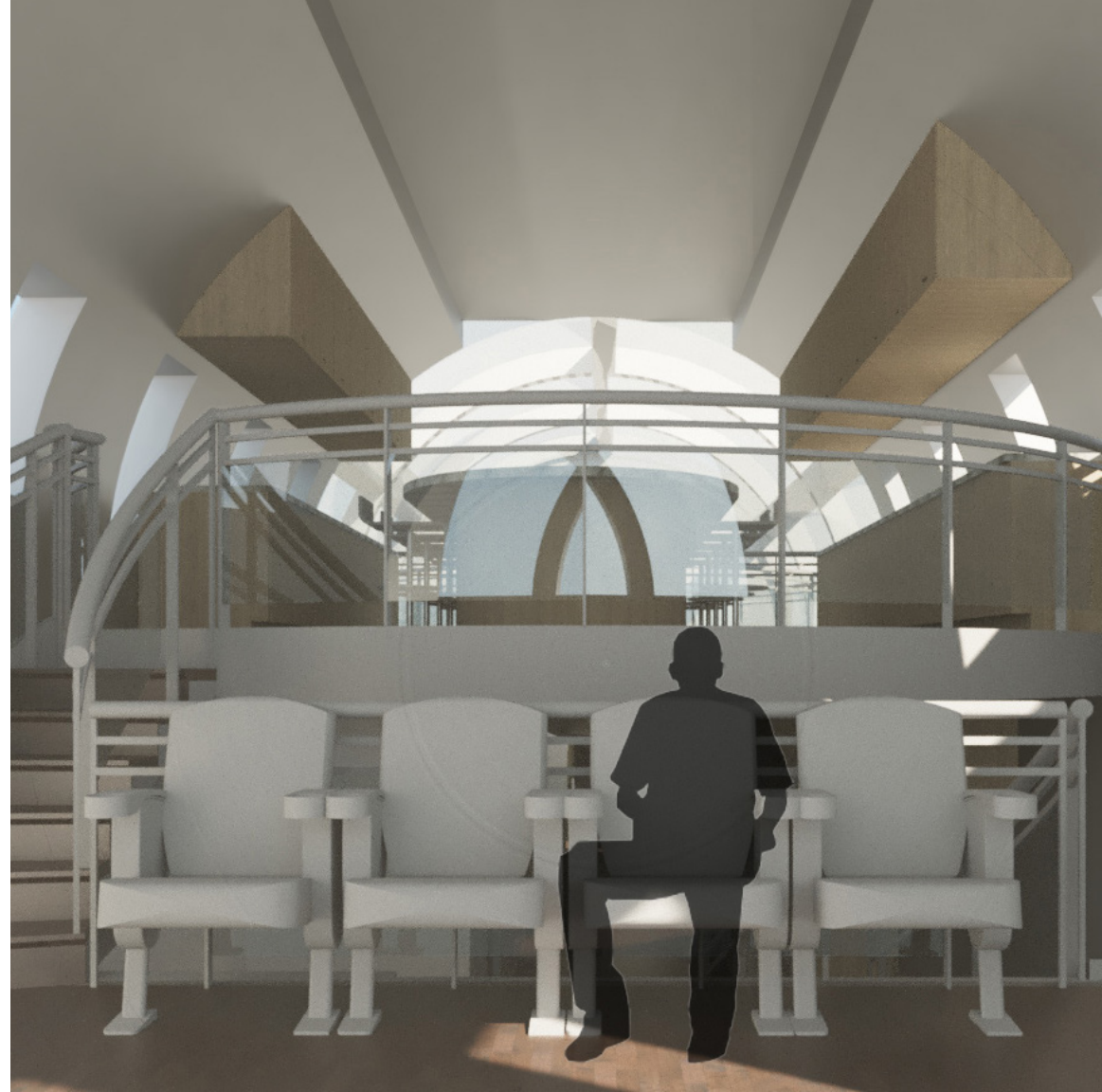


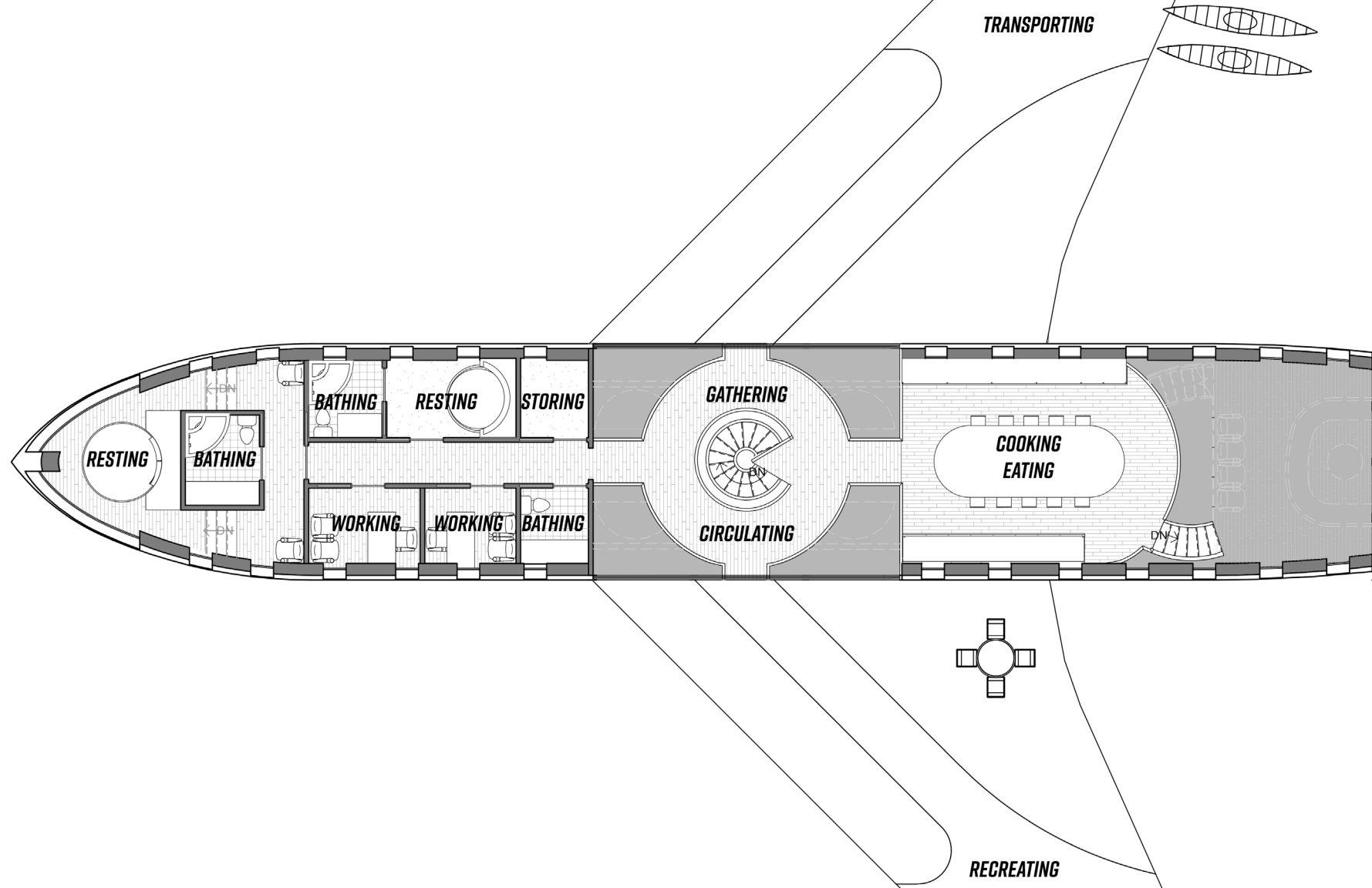


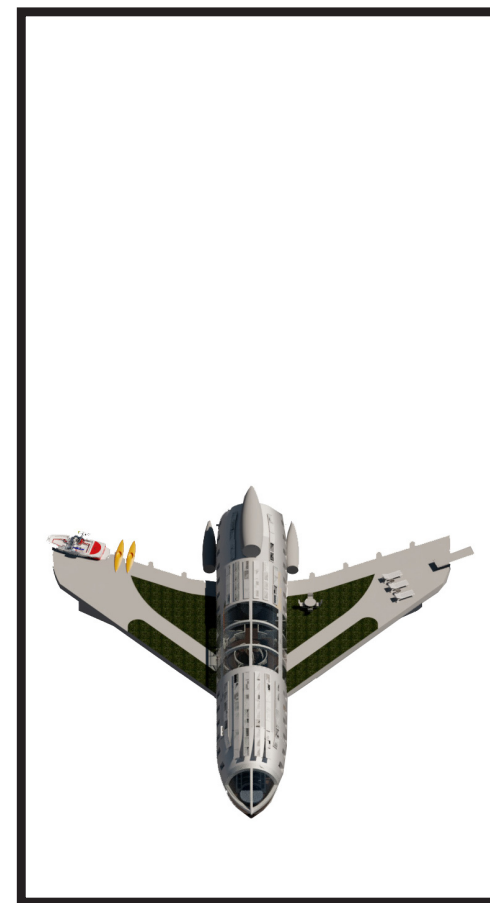
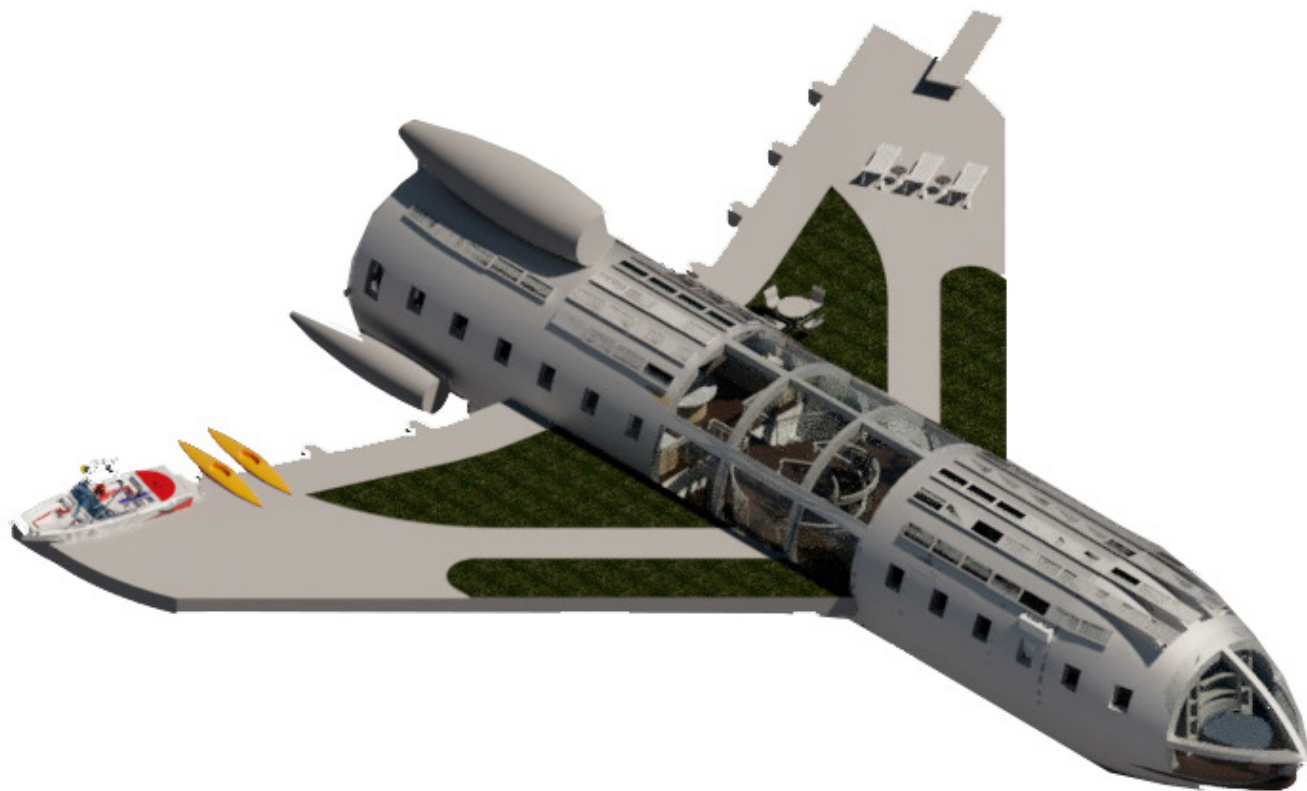


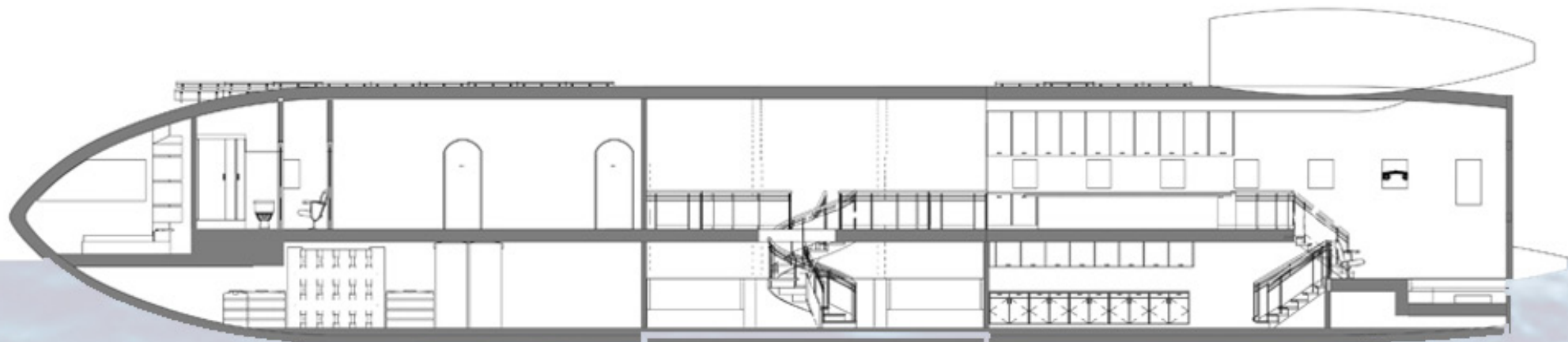
## AIRPLANE BOEING 727

THE CONCEPT OF THE AIRPLANE DESIGN IS TO CREATE A DWELLING FOR A FAMILY OF FOUR WITHIN THE RETIRED JET PLANE. A BOEING 727 WAS DESIGNED TO ACCOMMODATE A RESIDENTIAL SITUATION THAT IS ABLE TO FLOAT ON WATER.









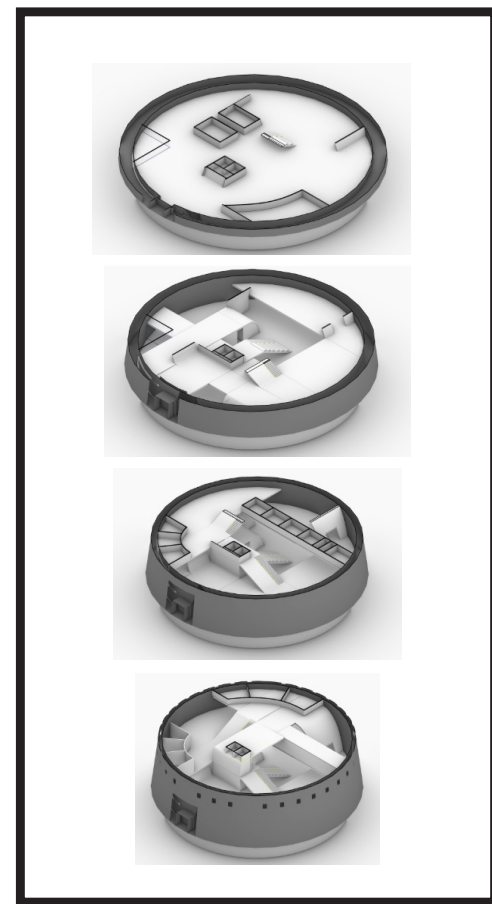
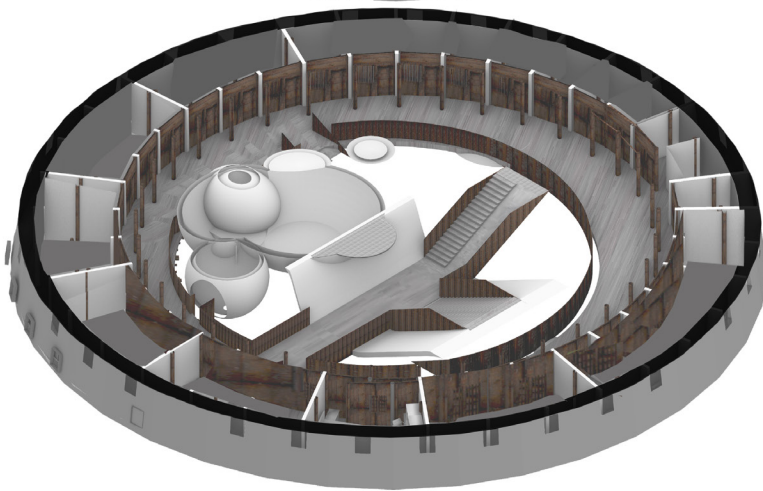
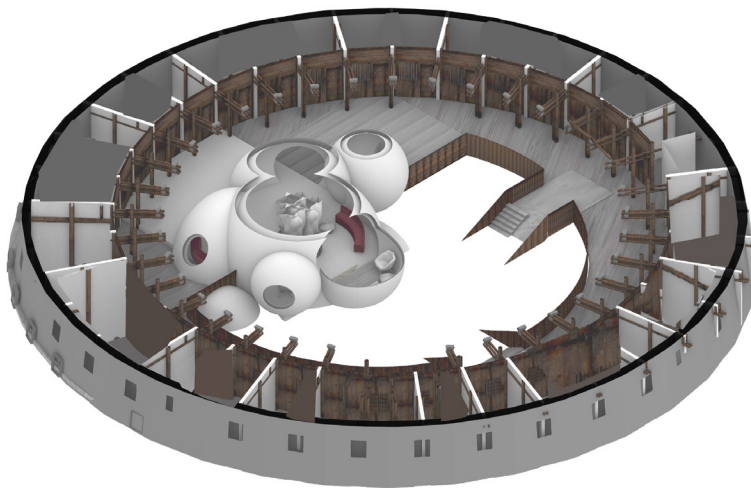
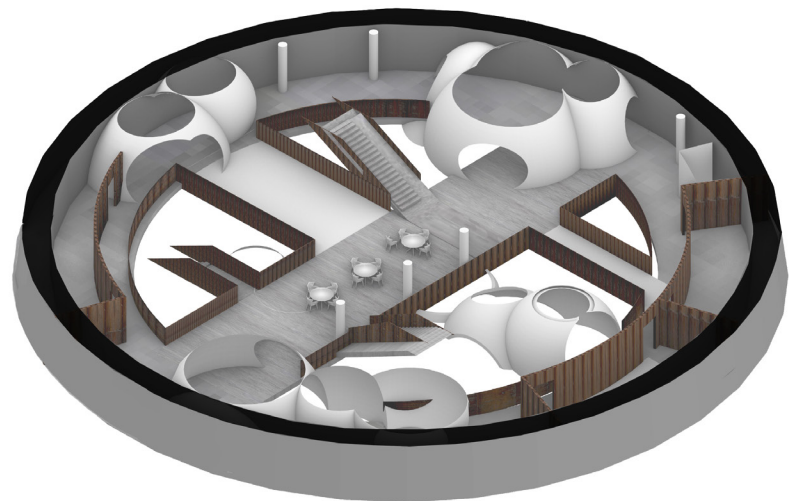


## THE CHUXI TULOU HOSTEL

THE CHUXI TULOU HOSTEL IS LOCATED IN CHINA. THE CONCEPT OF THIS MODEL IS DESIGNED AFTER THE COMMUNAL PLATE. THE COMMUNAL PLATE IS A LARGE CUSTOM WITHIN THE CHINESE CULTURE.





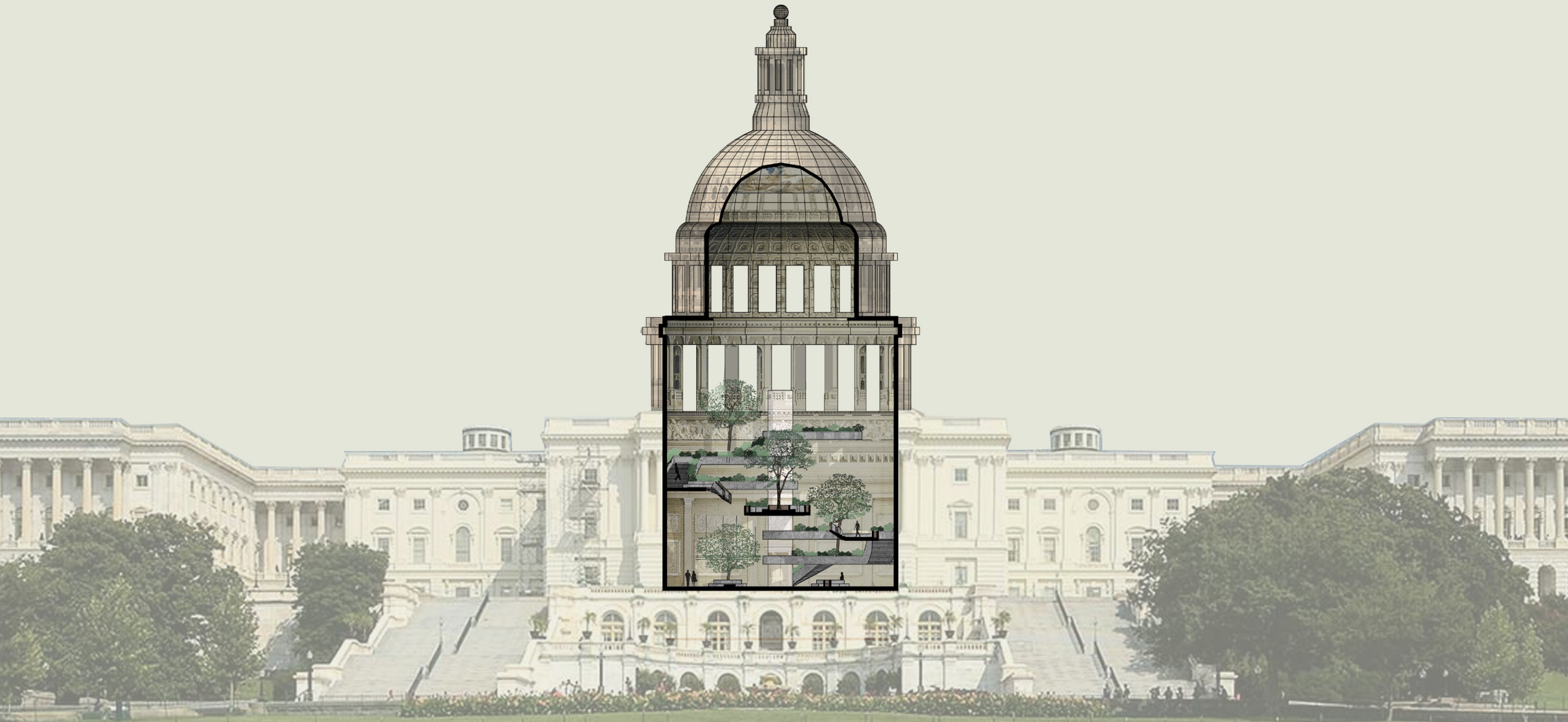




## THIS NOT OUR LAND

THIS PROJECT INSERTS A BOTANICAL GARDEN INTO THE UNITED STATES CAPITOL BUILDING. THIS INSTALLATION IS DESIGNED TO PROVOKE AWARENESS OF ENVIRONMENTAL DEGRADATION WITHIN THE AMERICAN LANDSCAPE. THIS INSTALLATION WILL SERVE AS A CONTEMPLATIVE SPACE FOR VISITORS, AND SENDS DIRECT AND INDIRECT MESSAGES TO GOVERNMENT OFFICIALS TO MAKE MORE ENVIRONMENTALLY CONSCIOUS DECISIONS.







SEA LEVELS  
ARE  
RISING

BE THE CHANGE

THE WORLD IS ON FIRE



KW