

COWS + OYSTERS

Brooklyn Army Terminal /

Student : Soh hee Oh

Prof. : Alexandra Barker

Design Studio 5 : Arch. 805.xx / Fall 2020

Crisicity : Urban Infrastructure in the Anthropocene

Cows + Oysters addresses the climate crisis by creating a place to observe how what we eat is produced and how it impacts the environment in both positive and negative ways, while promoting environmentally sustainable agricultural awareness and green industrial practices.

The project is conceived as a demonstration of embracing the negative externalities of human consumption and using existing ecological systems to mitigate the consequence of waste. A core component is the anaerobic digester, which would receive food waste from Industry City and Sunset Park neighborhoods, converting it to usable energy and returning it back as electricity to offset the use of primary fuel resources from the power grid.

The program includes oyster farming, integrated with laboratories and algae facilities and an agricultural farm which accommodates grazing livestock to supplement the anaerobic digester which receives food waste from the surrounding area.

While the oyster farming supports job training and an education center to promote their effective use on water resources, as a natural tool to implement, pairing them with cows, which are themselves a major source of climate change - frames humanity as caught between the two systems, rather than standing apart from it.

Cows + Oysters advances an interconnected relationship between some of the last of the world's megafauna and complex filter feeders, and positions humans in the middle of a complex symbiosis, embracing the diversity of existing ecological systems for mutual benefit people, cows and oysters.



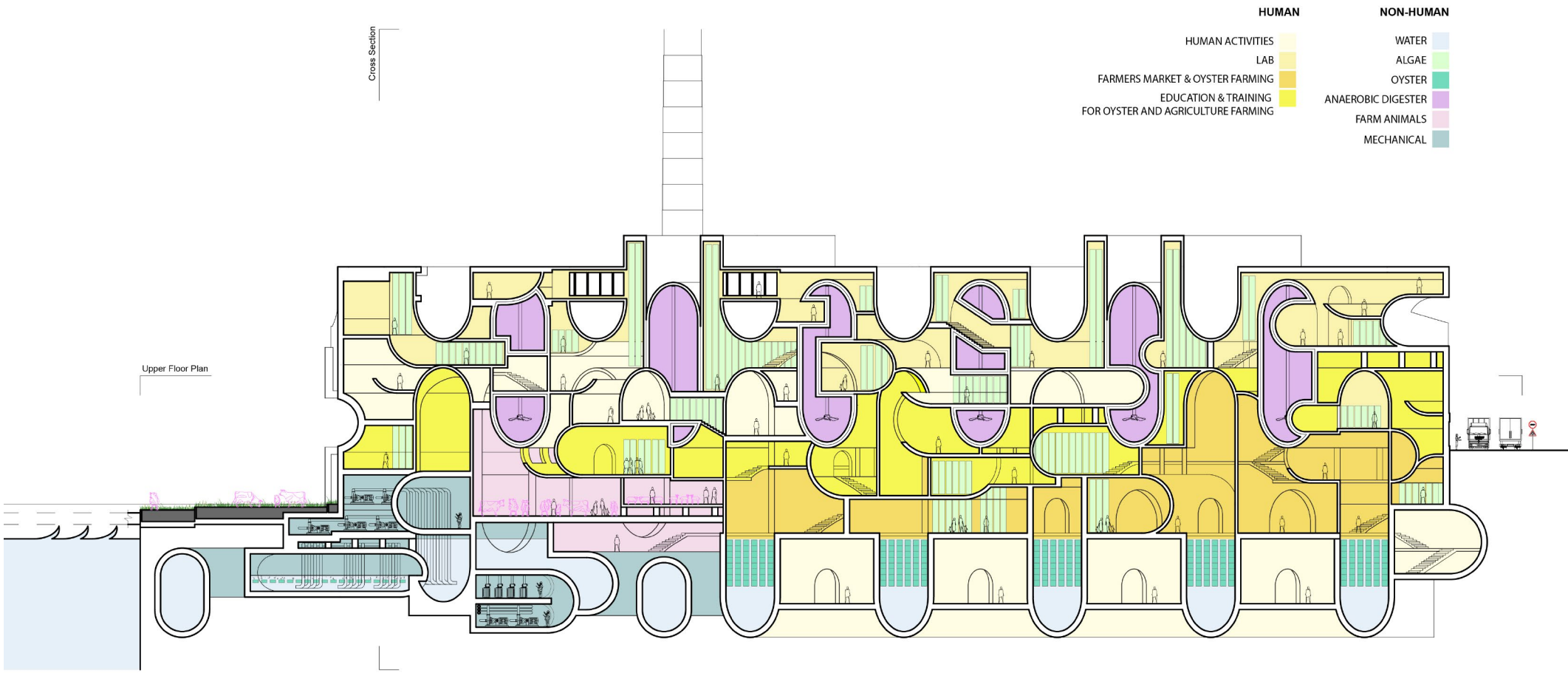


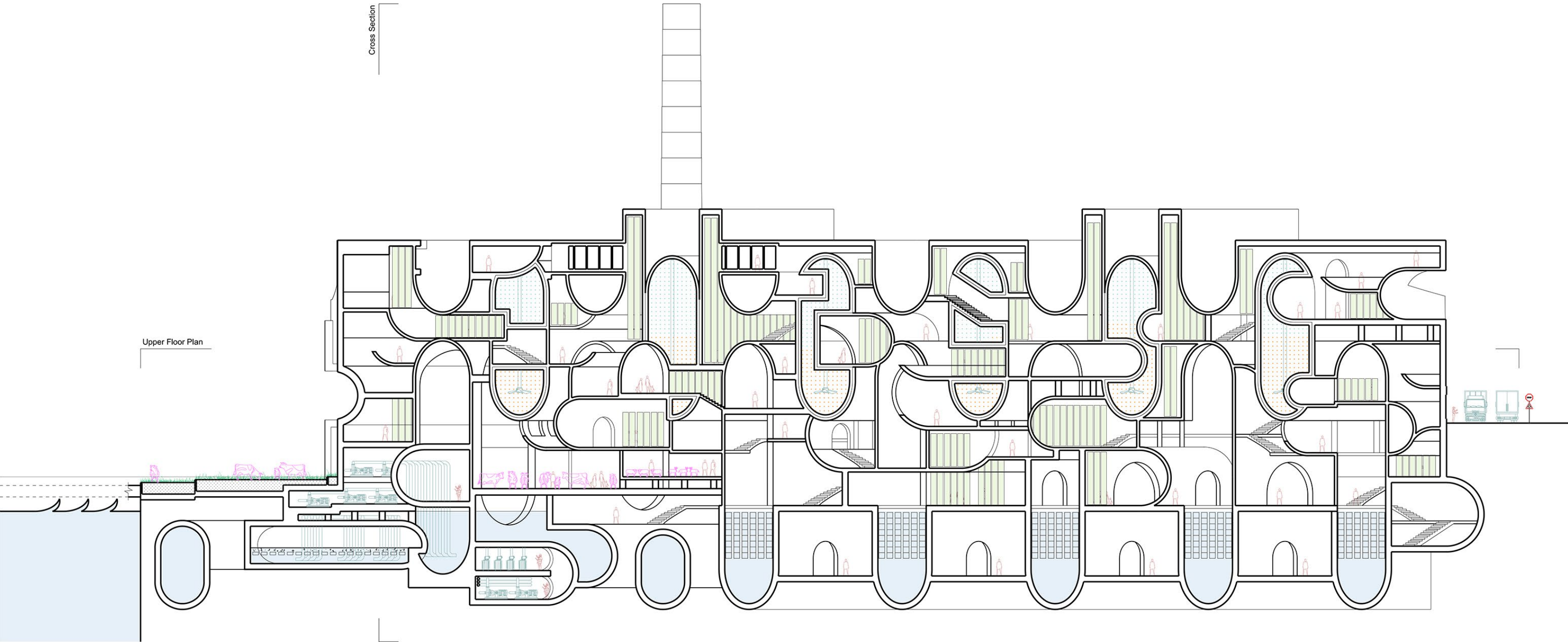
Site Plan at Brooklyn Army Terminal



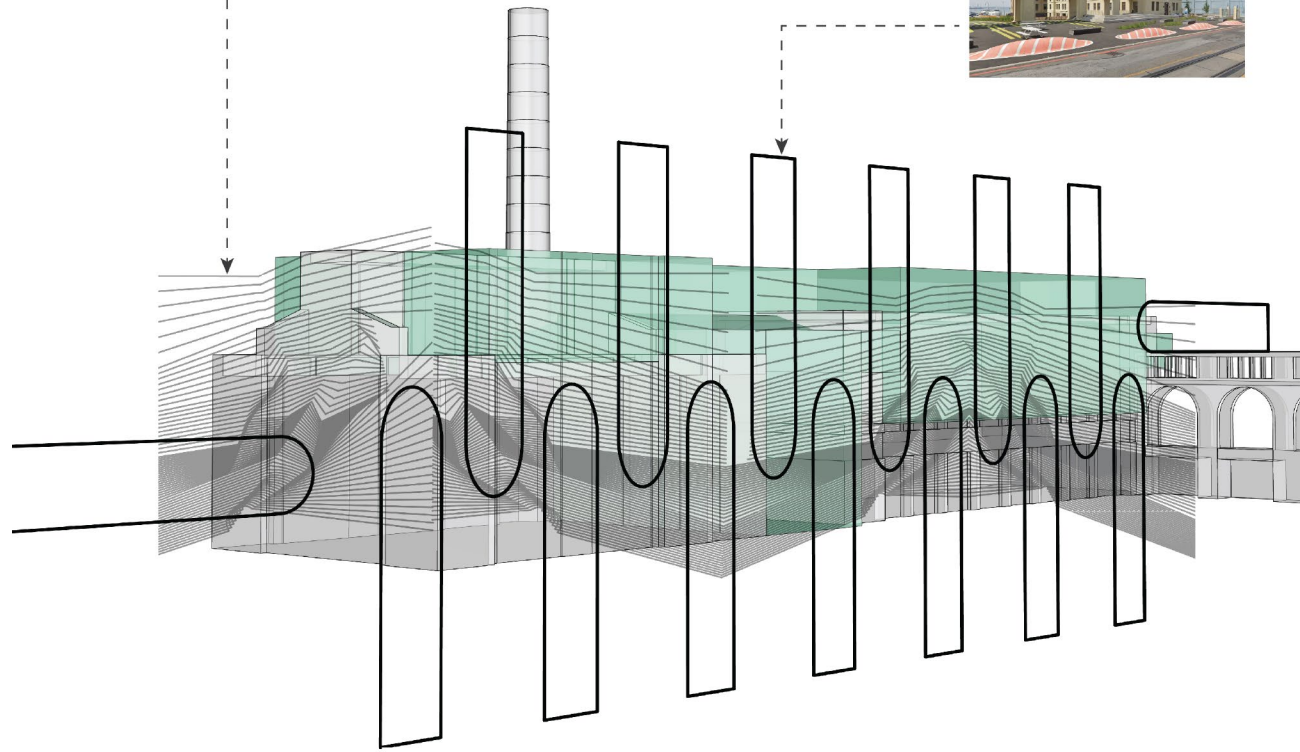


Resource Transfer Diagram for Anaerobic Digester

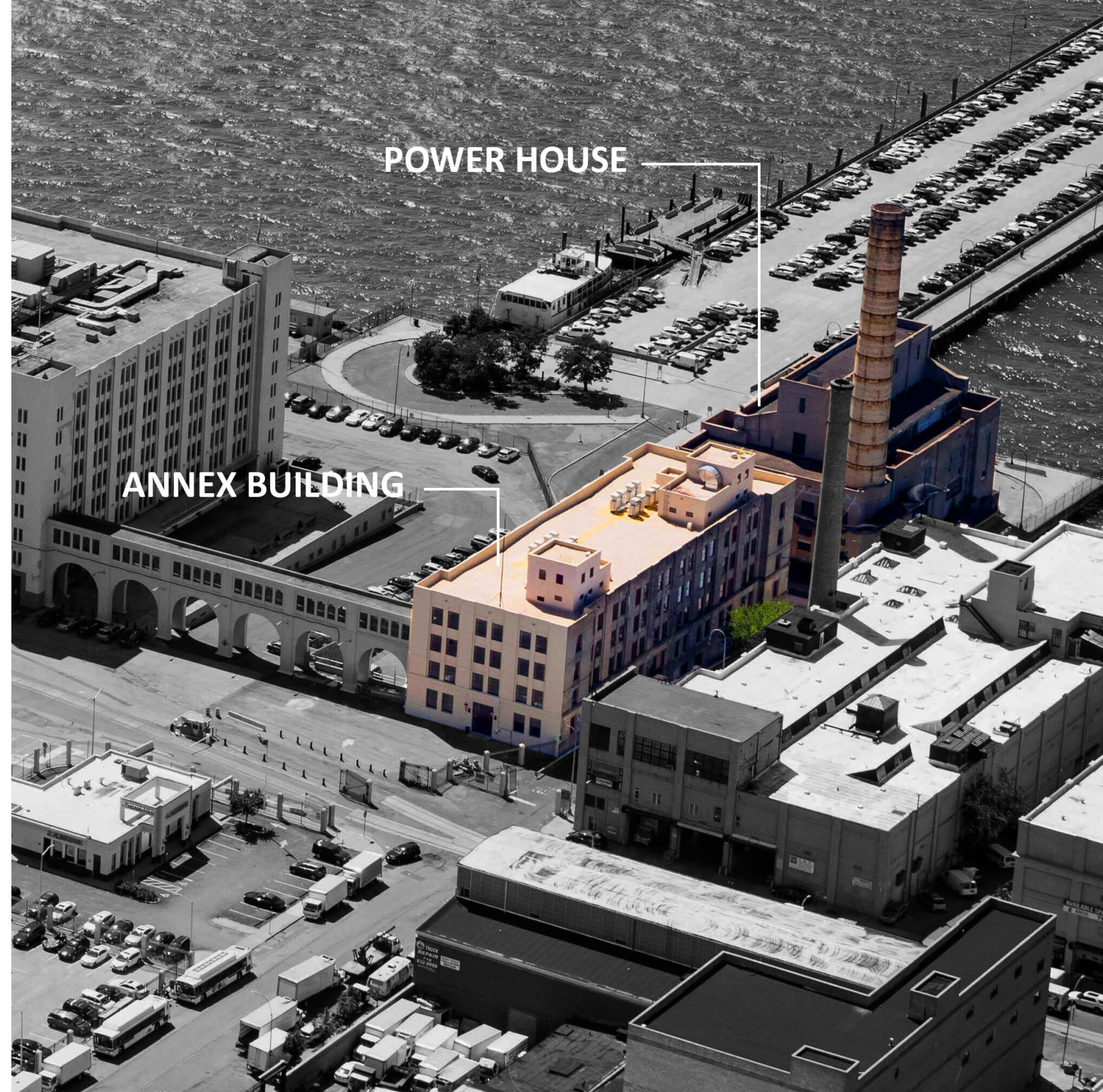




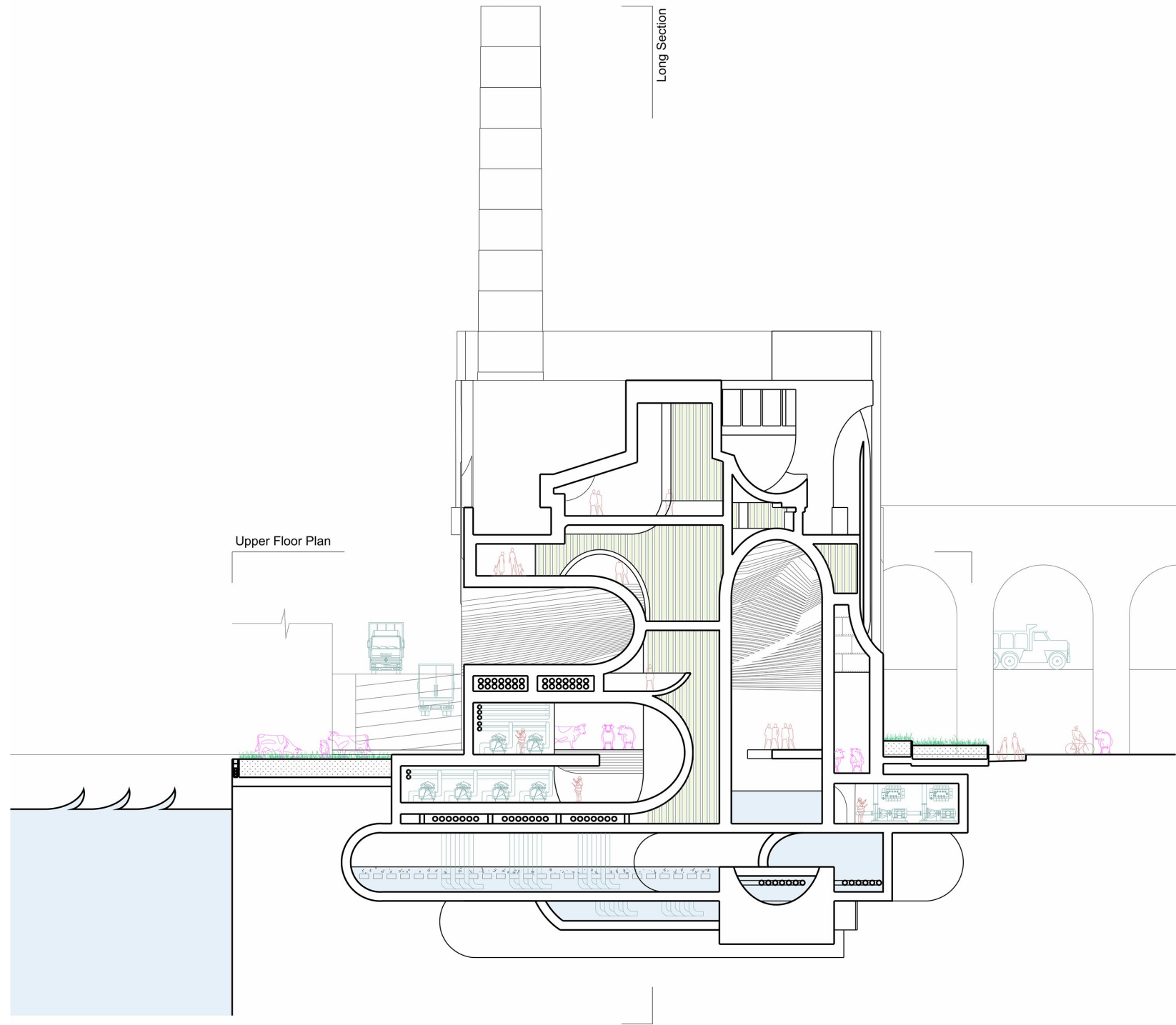
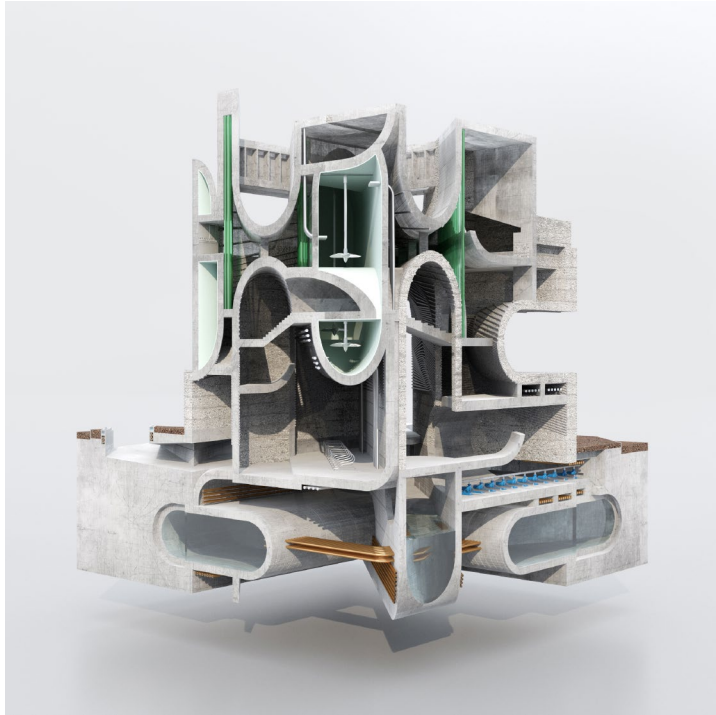
■ Addition
■ Existing

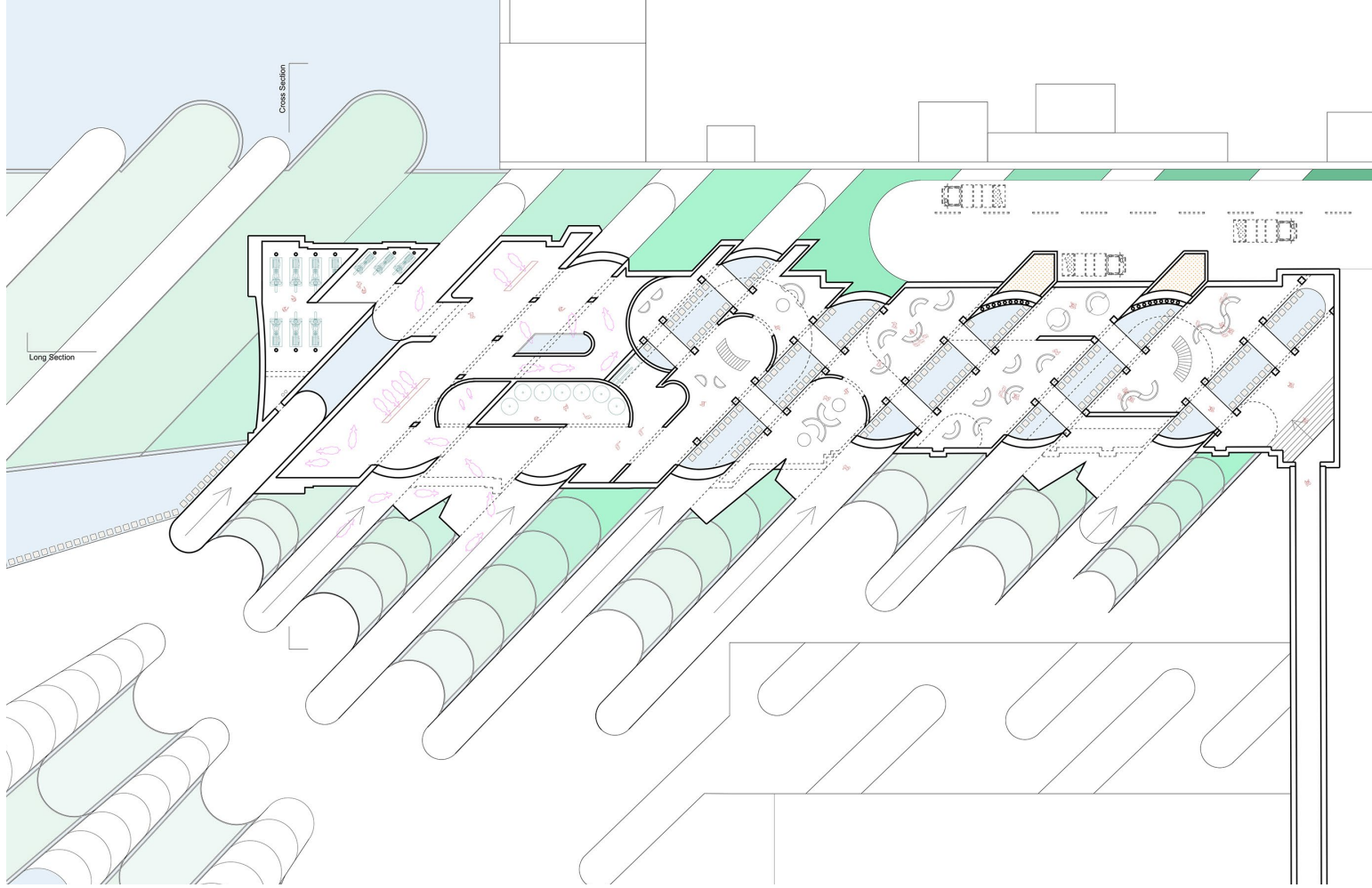


Massing Diagram

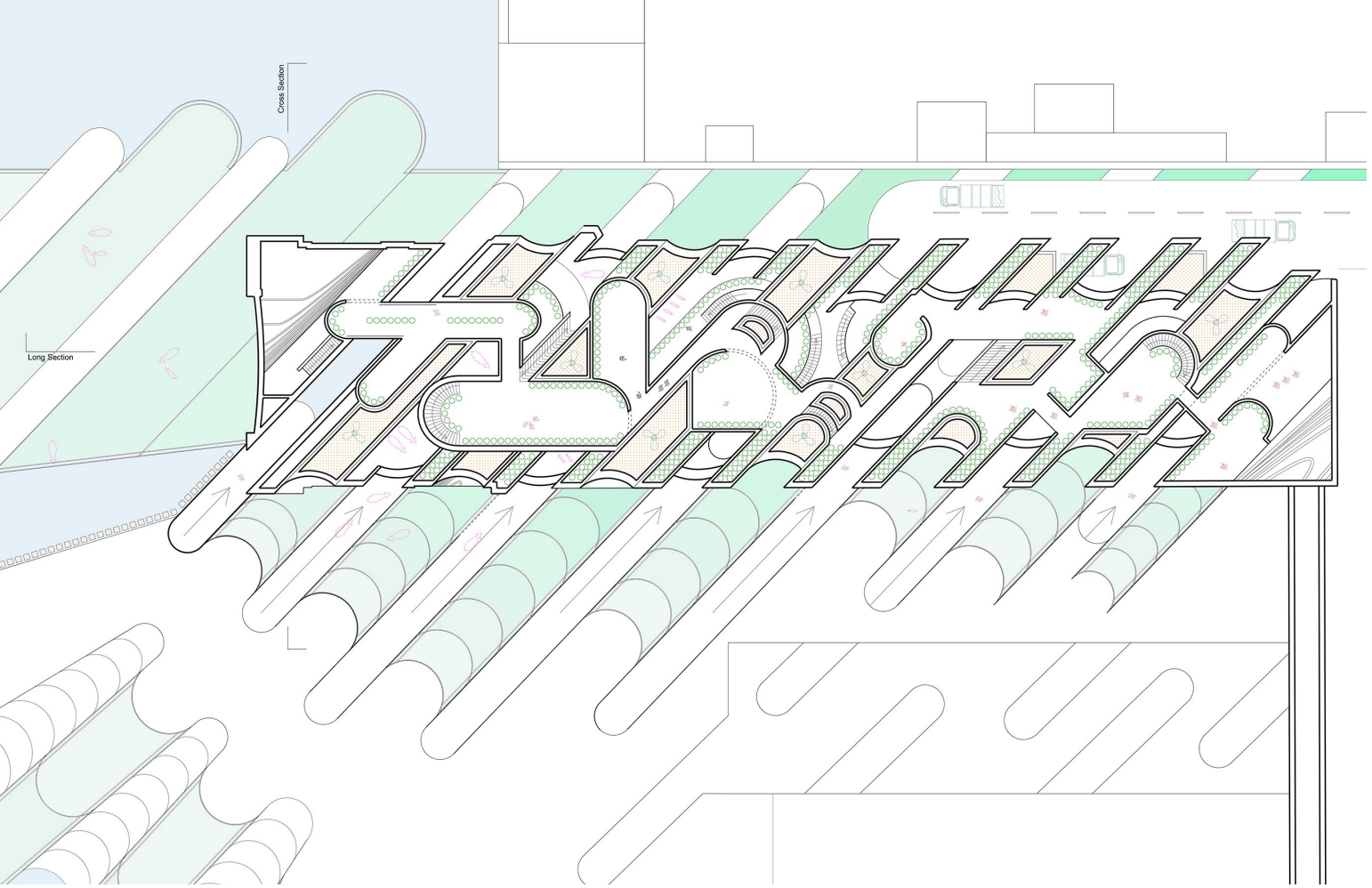








Ground Floor Plan



Upper Floor Plan

