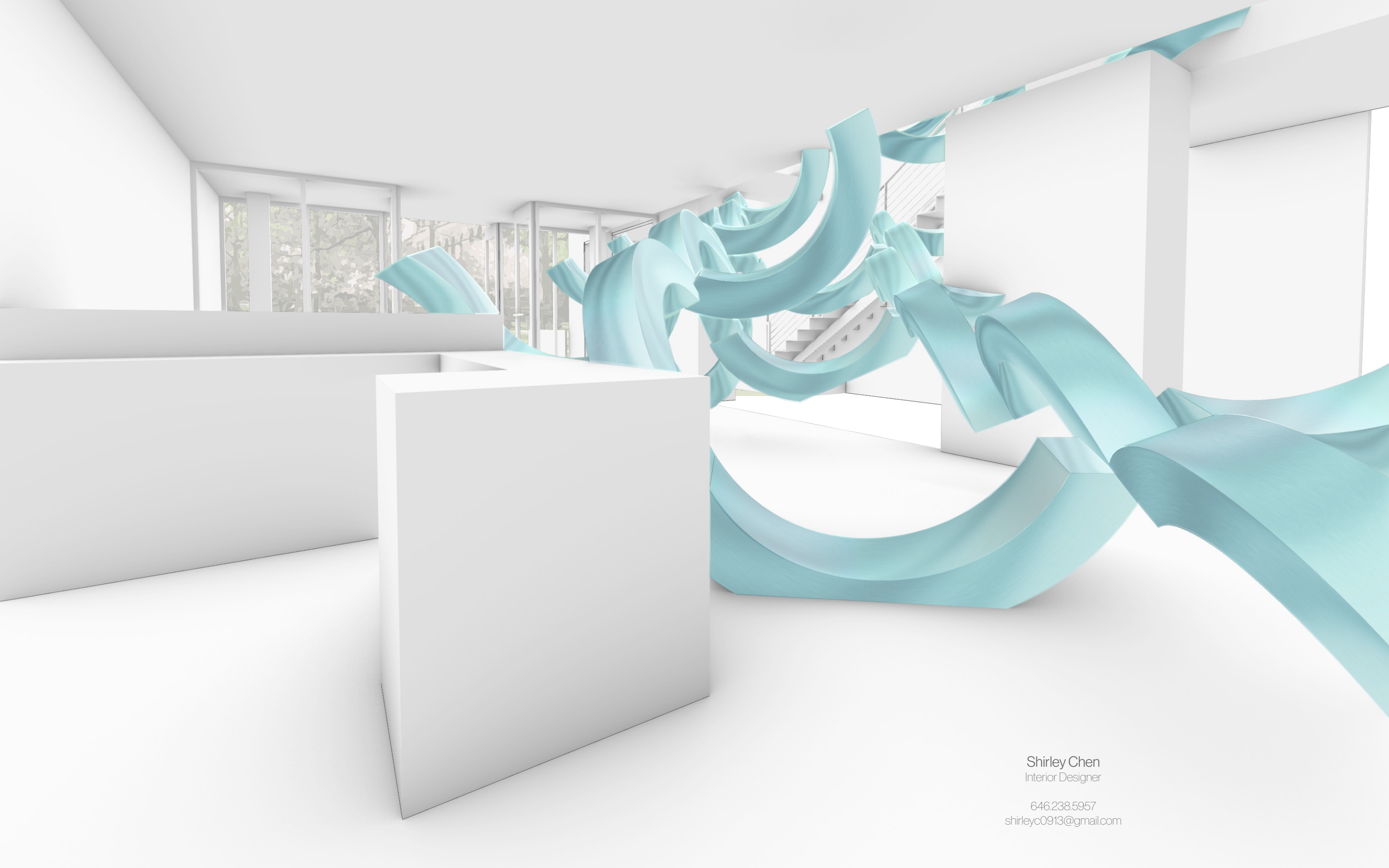




SHIRLEY CHEN DESIGN

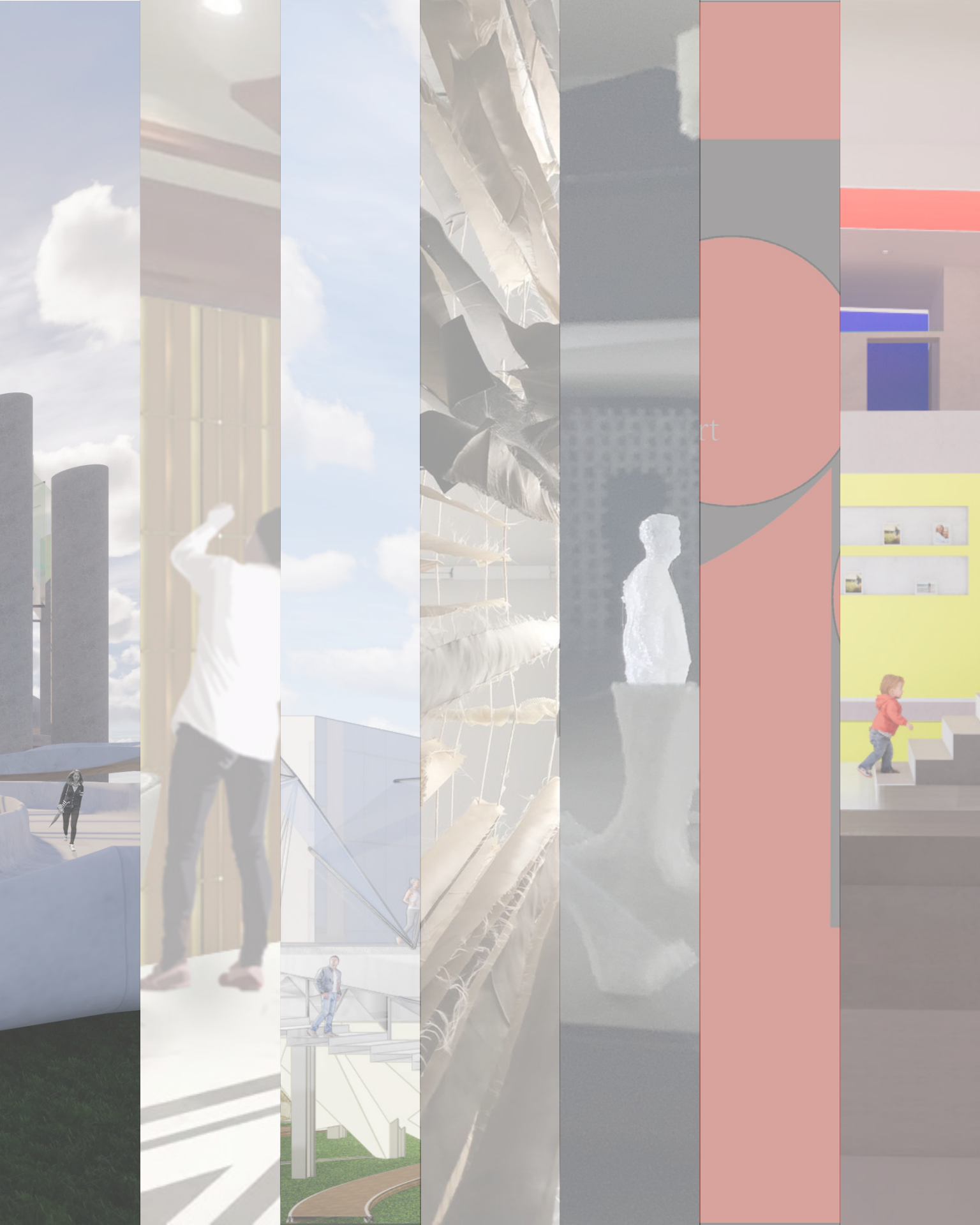
PORTFOLIO





Shirley Chen  
Interior Designer

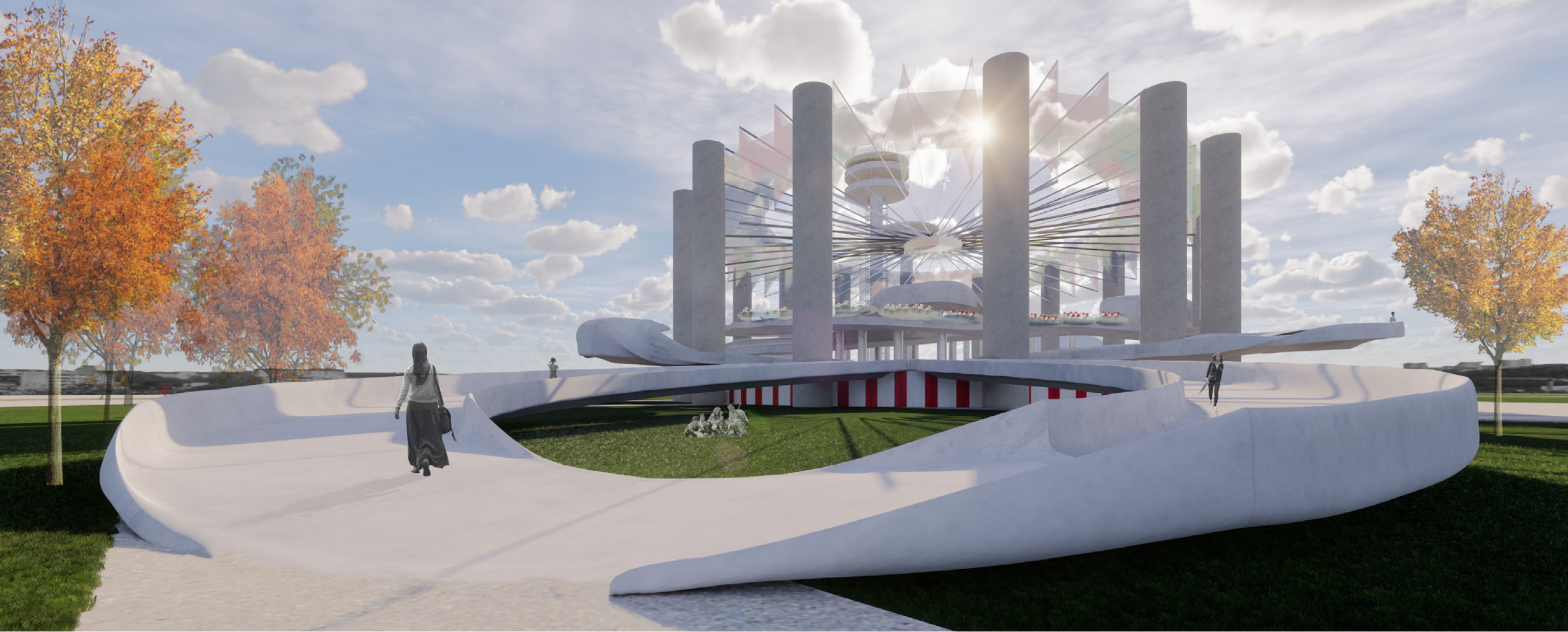
646.238.5957  
shirleyc0913@gmail.com



# CONTENTS

6	Pavilion LIVING CYCLE
18	Wall Panel DYNAMIC DUO
24	Indoor Public Space INTERCONNECTED SYSTEMS
30	Installation ECHO OF SACRIFICE
36	Retail MODULAR INFINITY
44	Bar / Restaurant POR: PART OF RED
56	Residential DWELLING IN COLOR





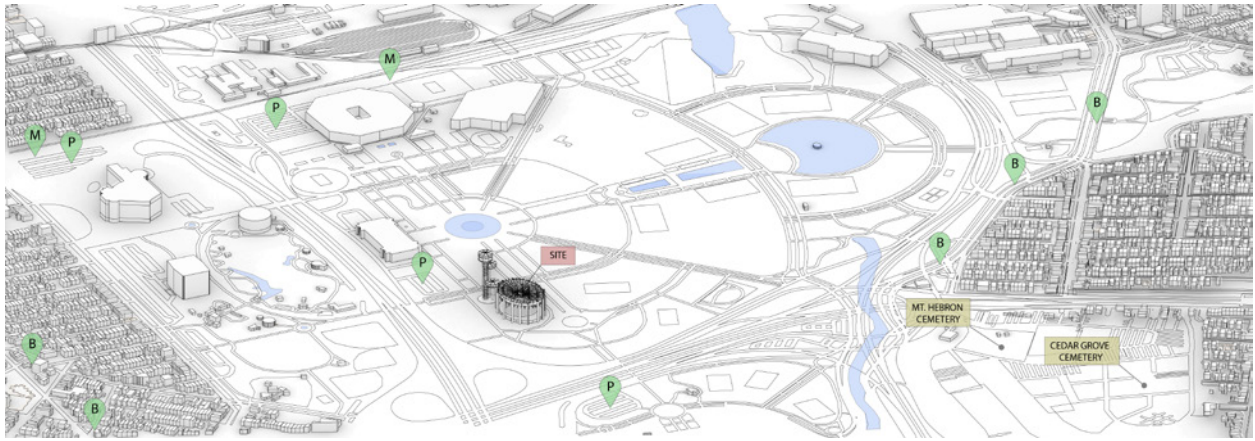
Site: New York State Pavilion, Queens, NY.

Pavilion

# LIVING CYCLE

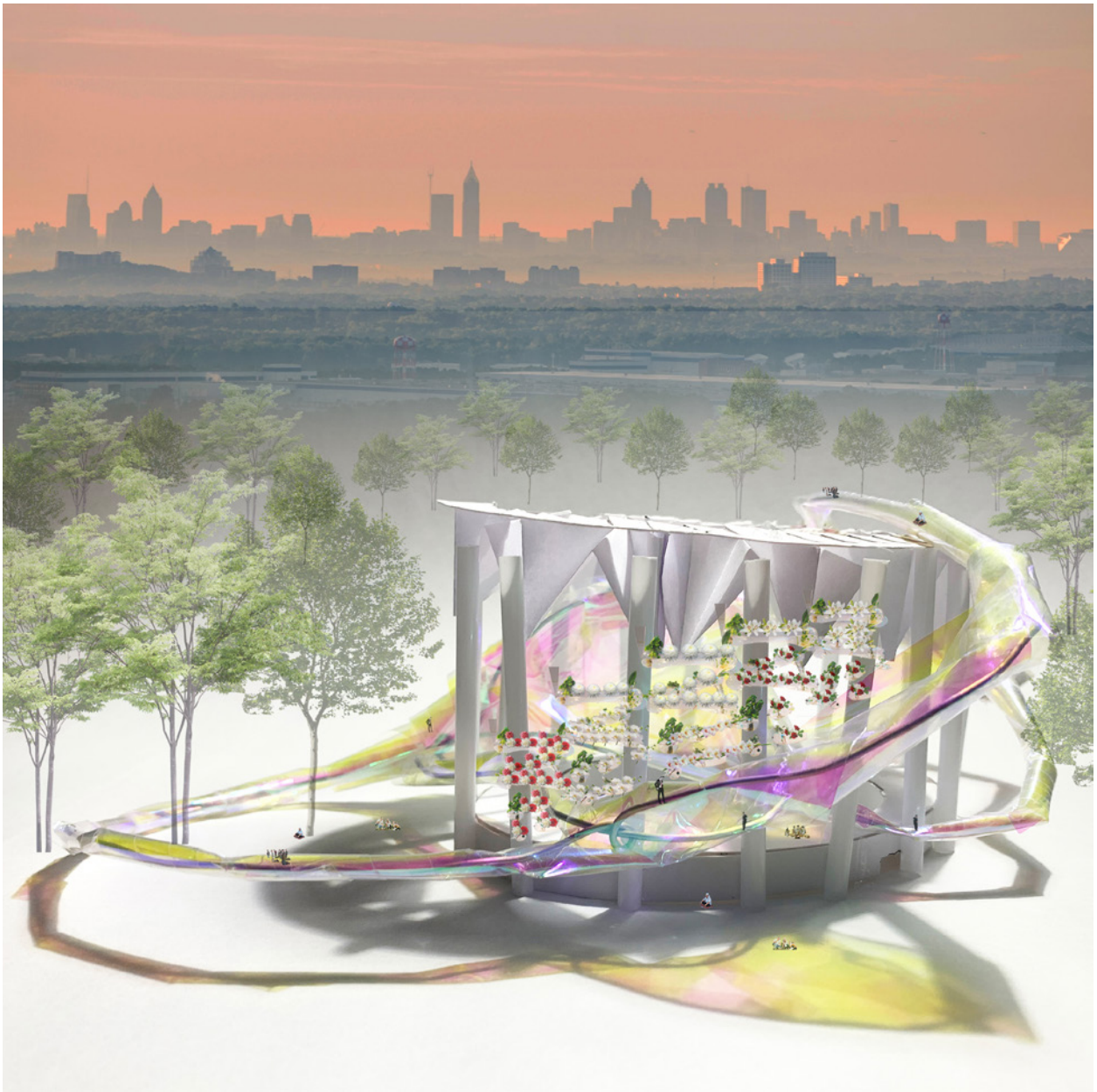
Exploring the concept of mourning a loss such as death, this project creates a journey for memorializing and healing together with others through ritualizing and gathering of various cultures. As the thread tying these cultures together, the flower field becomes the attraction into the open, inclusive New York State Pavilion.





3D site map of bus stops, parking lots, metro stops, and the nearby cemeteries

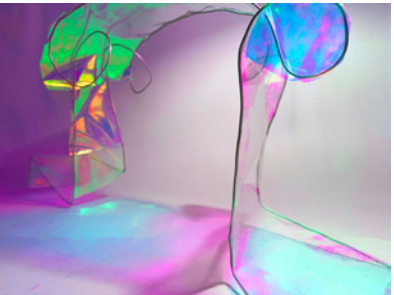
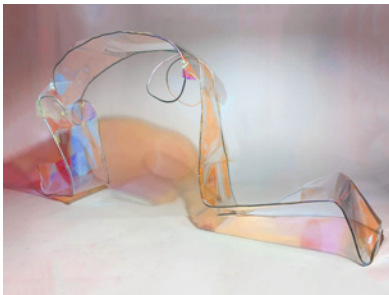
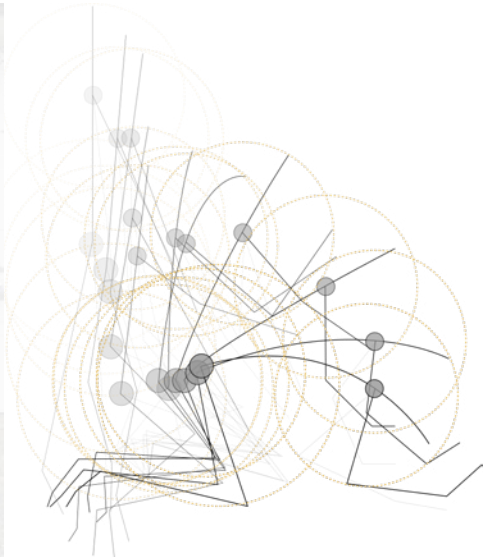
By exposing and celebrating death as part of life, the abandoned New York State Pavilion acts as an extension of the nearby cemeteries and gives the community a chance to mourn their losses individually and with others. Given a serene environment within this large open park where one can look out to the city, individuals are able to take a moment to memorialize and perform their rituals. Color and light act as a method to create soft boundaries between spaces and further amplify sensations.



Concept Collage

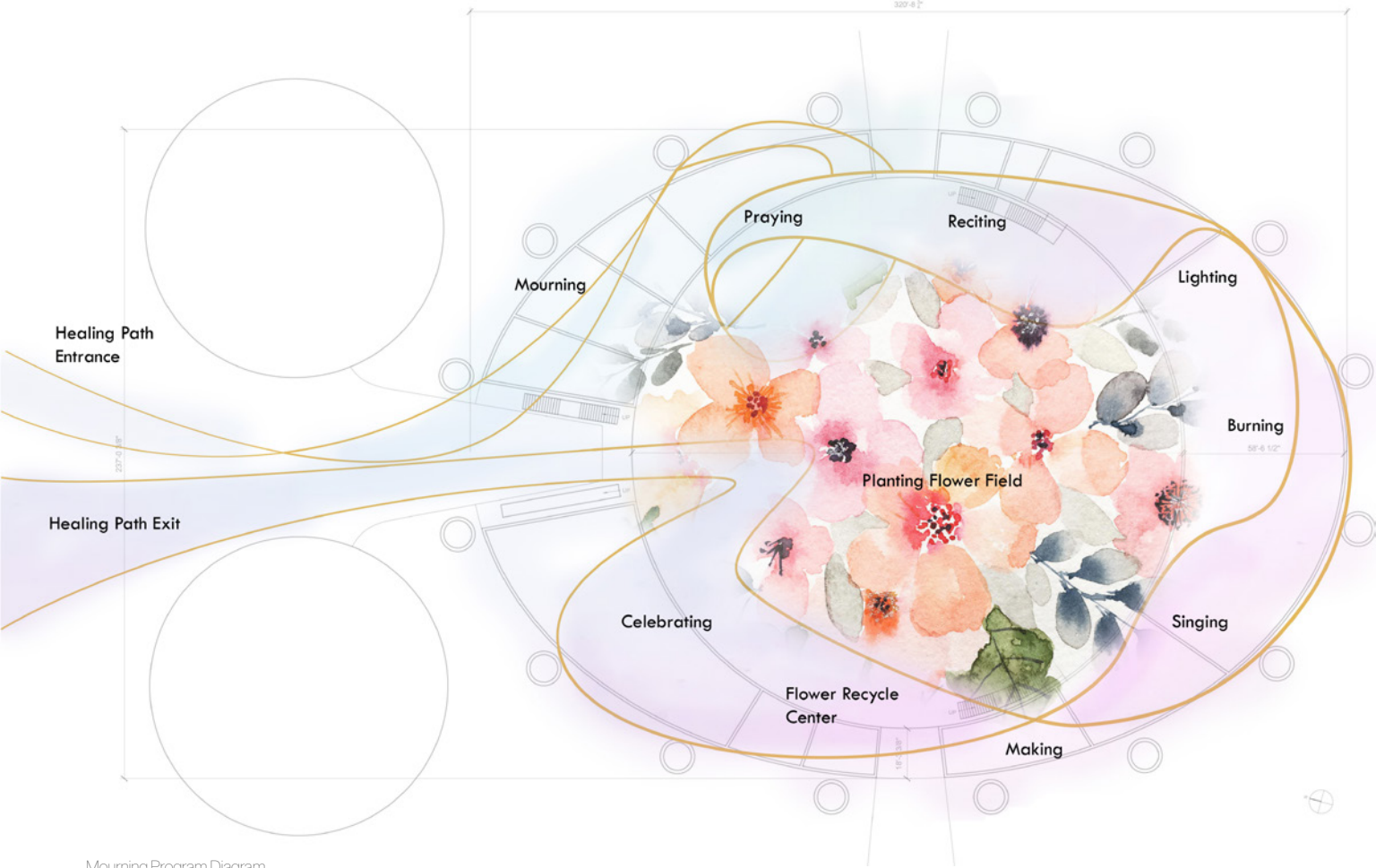


Ritual action of kneeling and bowing



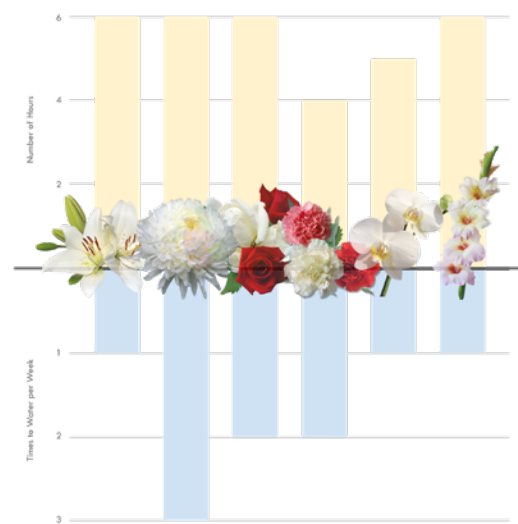
Color and Light Study Models



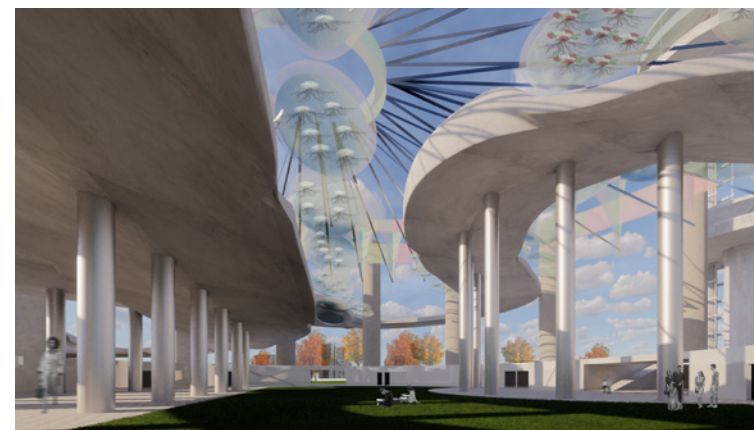


Mourning Program Diagram

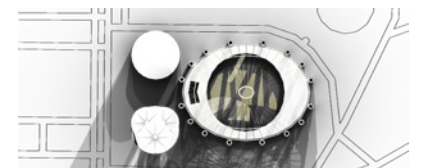
As the common ritual material between the various cultures in the community, the Pavilion is designed based on the popularity and needs of the flowers. These flowers located in custom hydroponic garden vessels are connected along the ramp and can be viewed and picked by individuals for their unique ritual bouquet.



Community event space dusk view



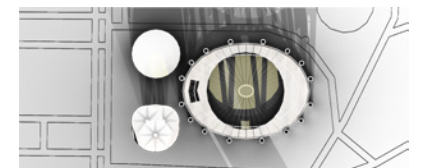
Community event morning view



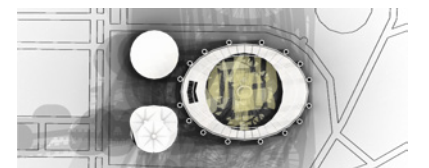
8AM Sun



12PM Sun

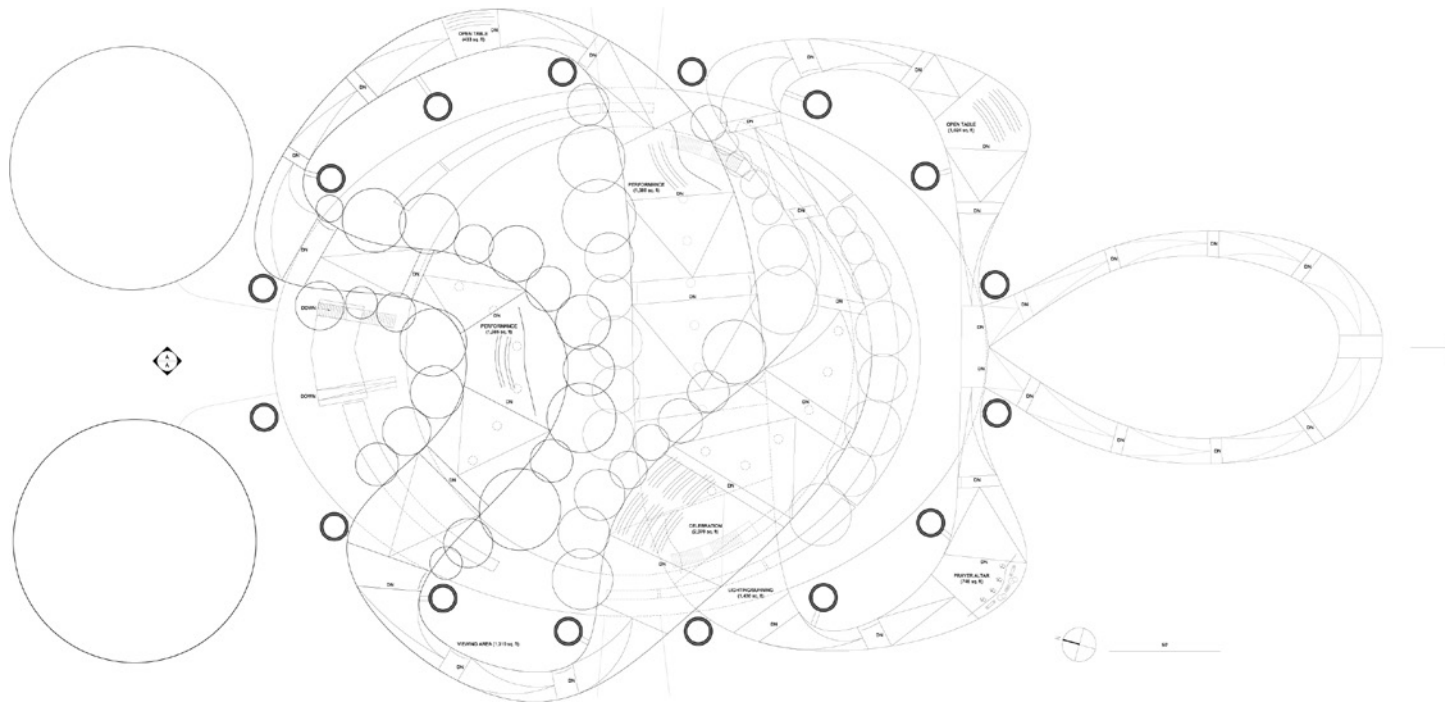


5PM Sun

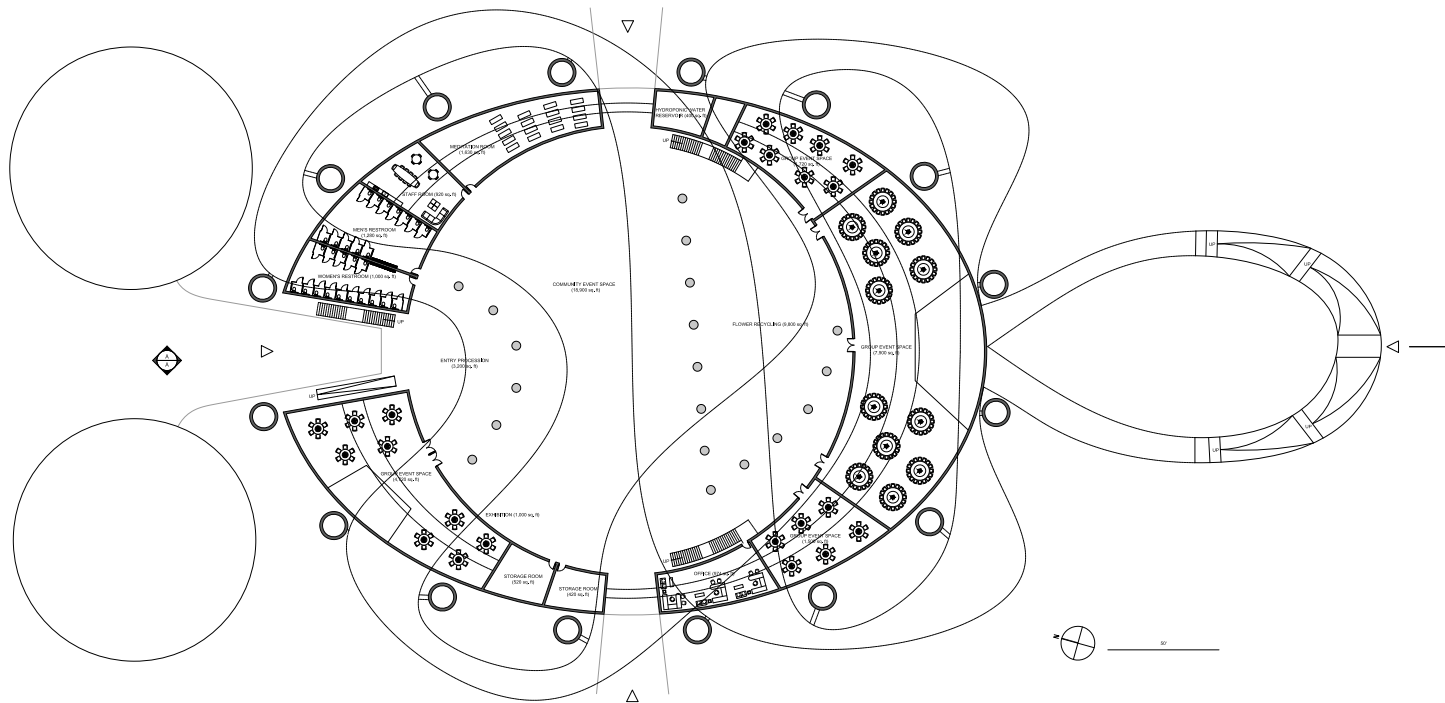


Combined Sun





Ramp Plan



Ground Floor Plan



Viewing out into the City



Lighting and Burning Space



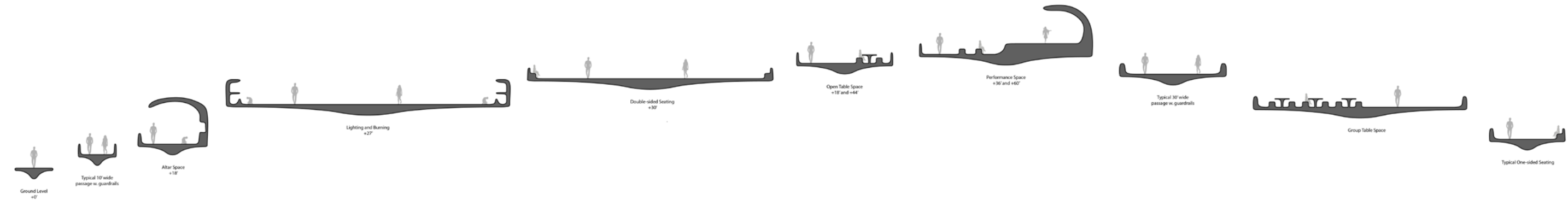
Prayer Altar Space

The ramp weaves in and out of the existing 100 feet columns and brings the users 60 feet into the air, allowing for them to walk along it and perform their various rituals, while giving them a different perspective of the space and the surrounding city.

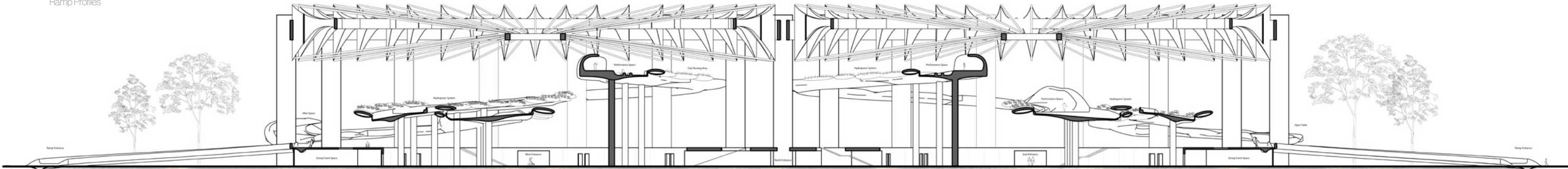


Performance Space

The continuous ramp is made from various curve profiles to accommodate for various programs. The custom curves forms the basis for the ground, walls, roofs, and even furniture.

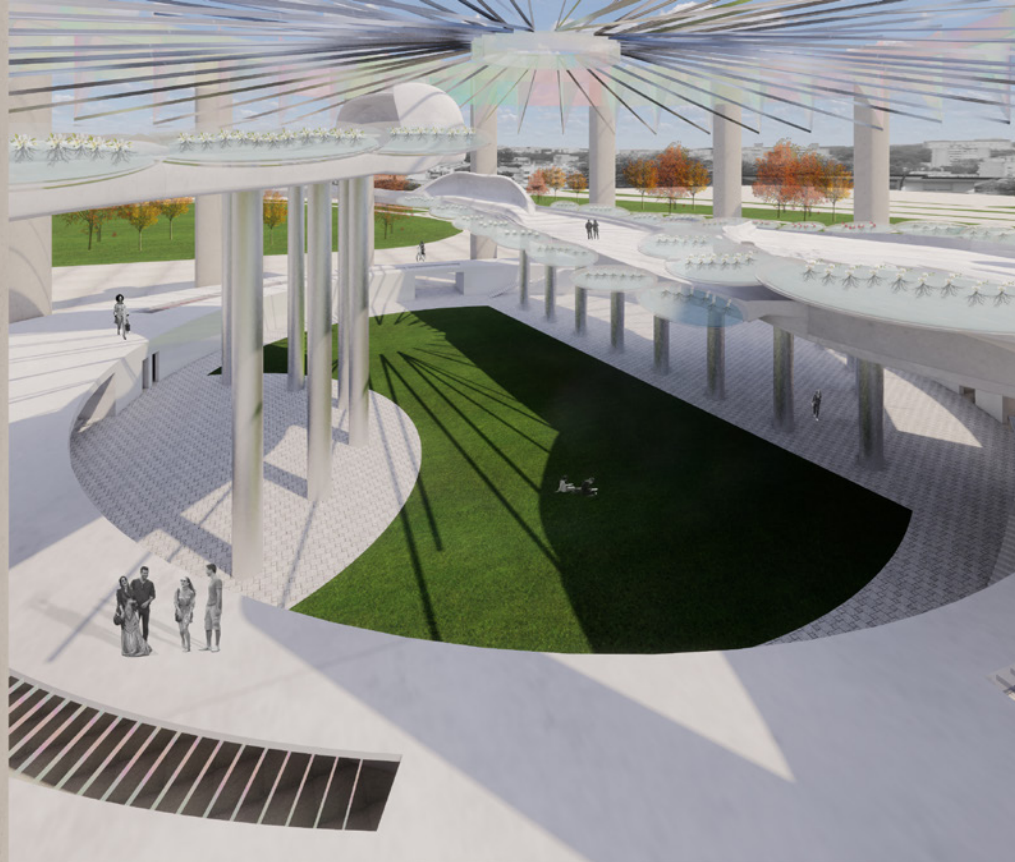


Ramp Profiles



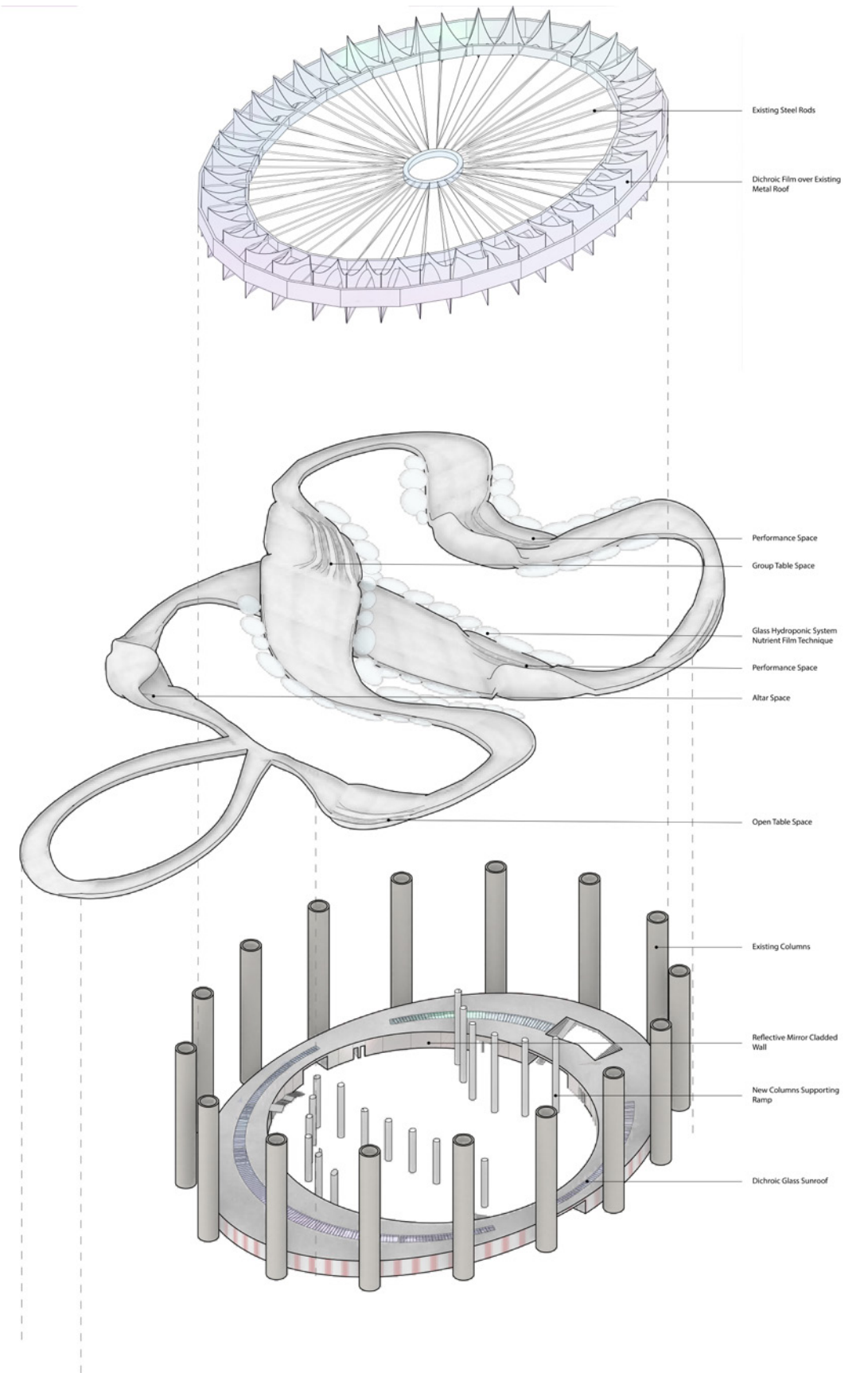
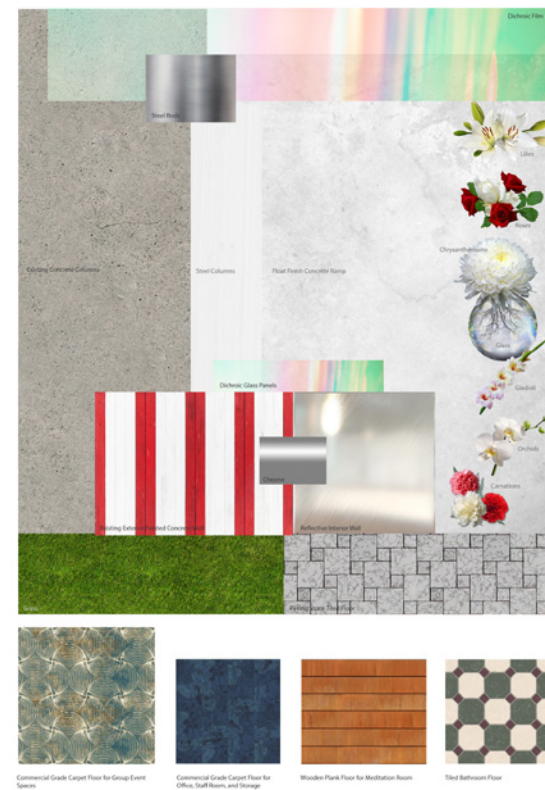
Section AA





View down from ramp

The combination of the existing materials such as the concrete columns and painted exterior wall with the new materials such as dichroic glass, carpet, and tiles creates a serene and relaxing environment for one to take a moment from the busy city to memorialize and heal.







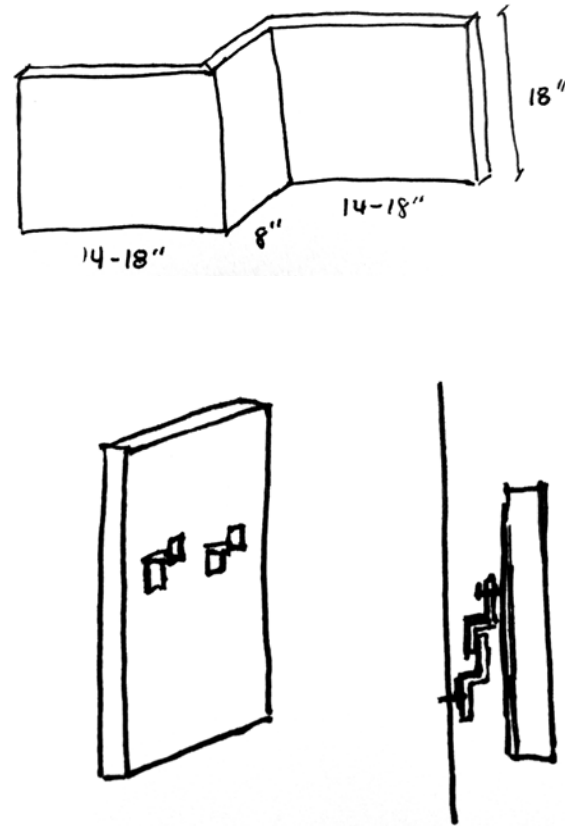
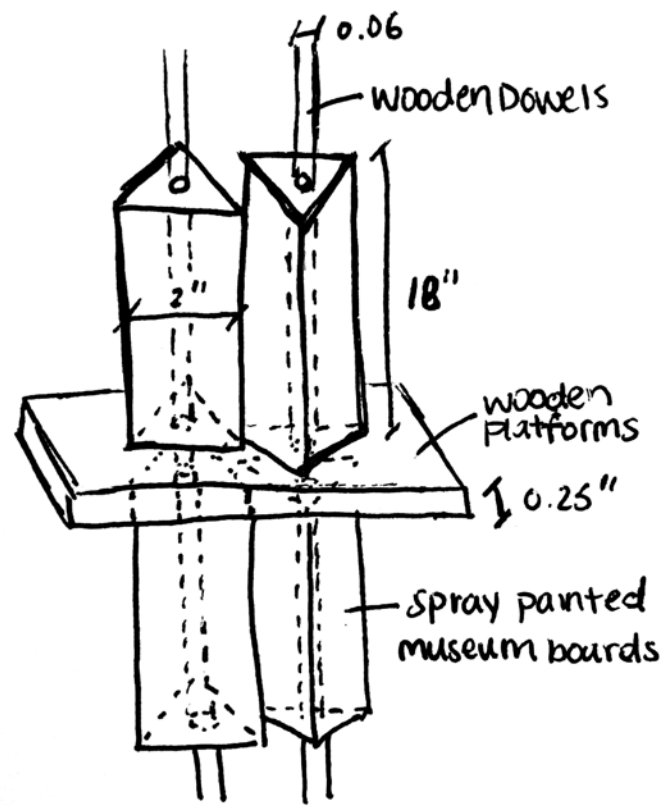
Site: Any Wall

Wall Panel

# DYNAMIC DUO

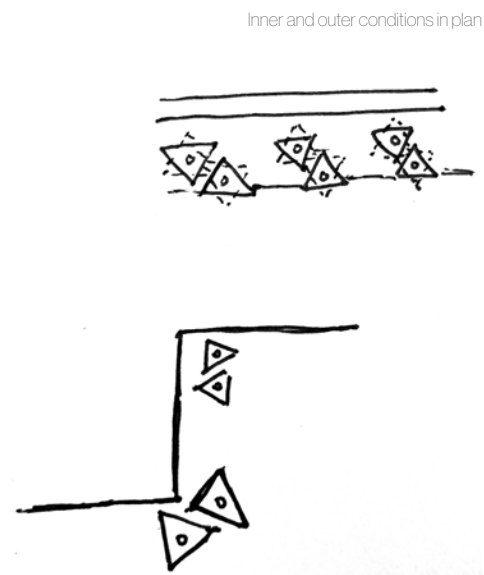
The objective of this project is to design a wall panel and build a 1' = 1' model that is able to resolve inner and outer corner conditions. The design of this panel was inspired by interactive walls in which modules can rotate. However, within this design each module affects the one next to it, thus the name "Dynamic Duo". Whenever one pivots, the neighboring one also pivots showing the color change of two different sides.



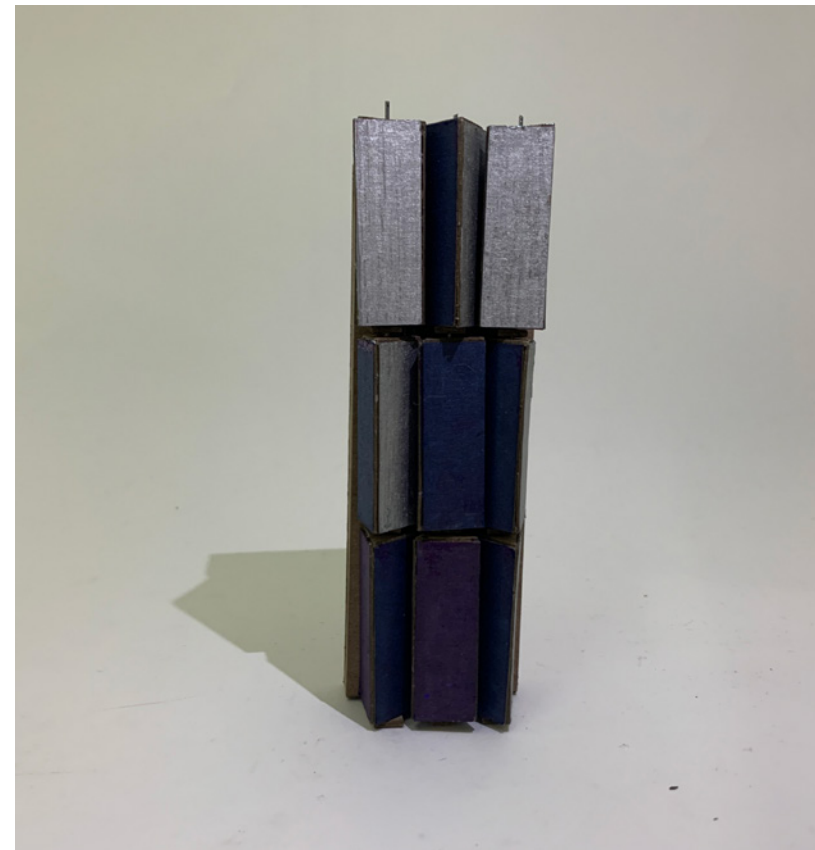


Hand sketches explaining the design idea and dimensions

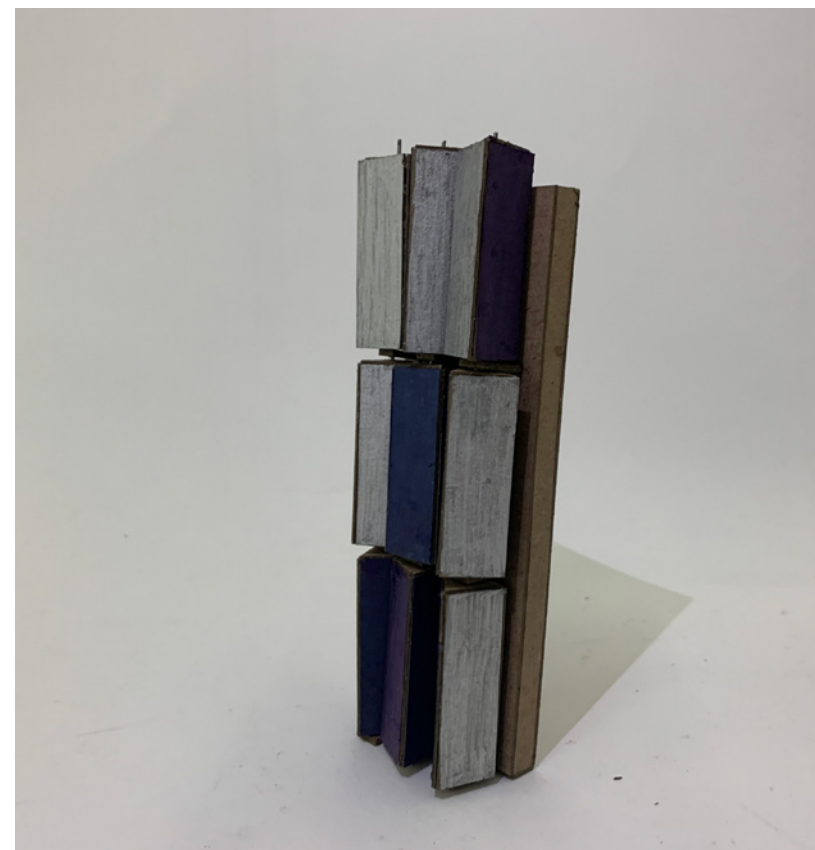
The design of the panel was explored through sketches and a small study model. Each of the modules is held up by a rod through the center and spins off an axis. Through an offset of the neighboring module, the two cause each other to pivot when touched.

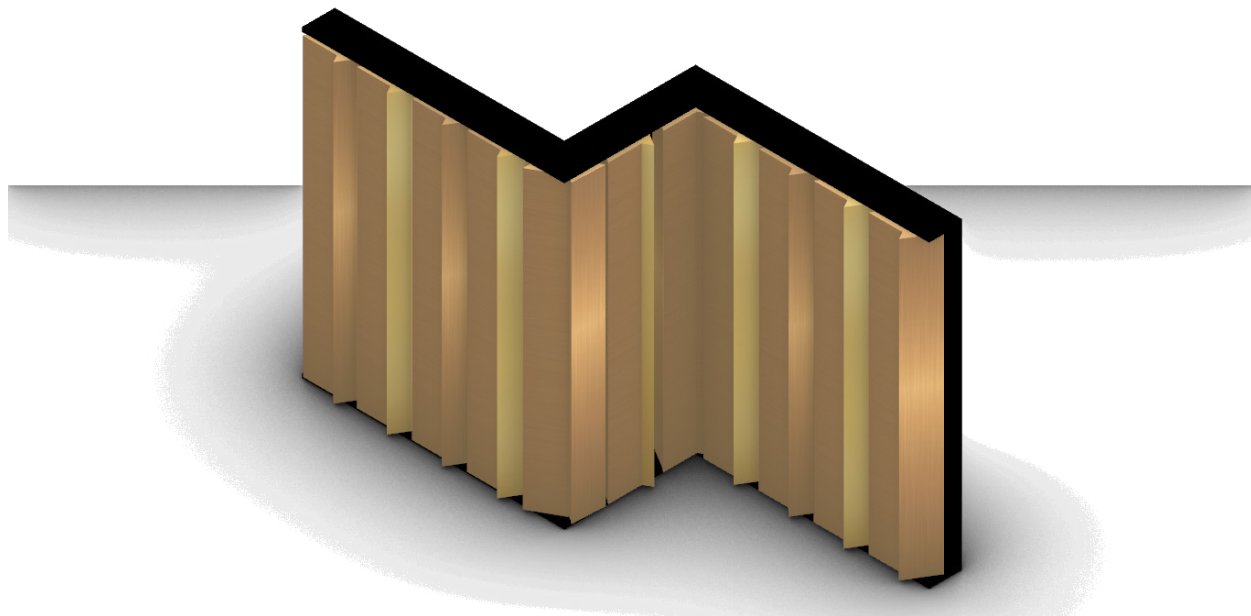
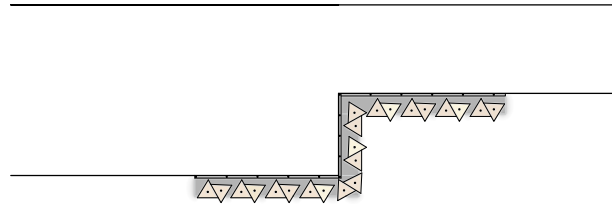


Inner and outer conditions in plan



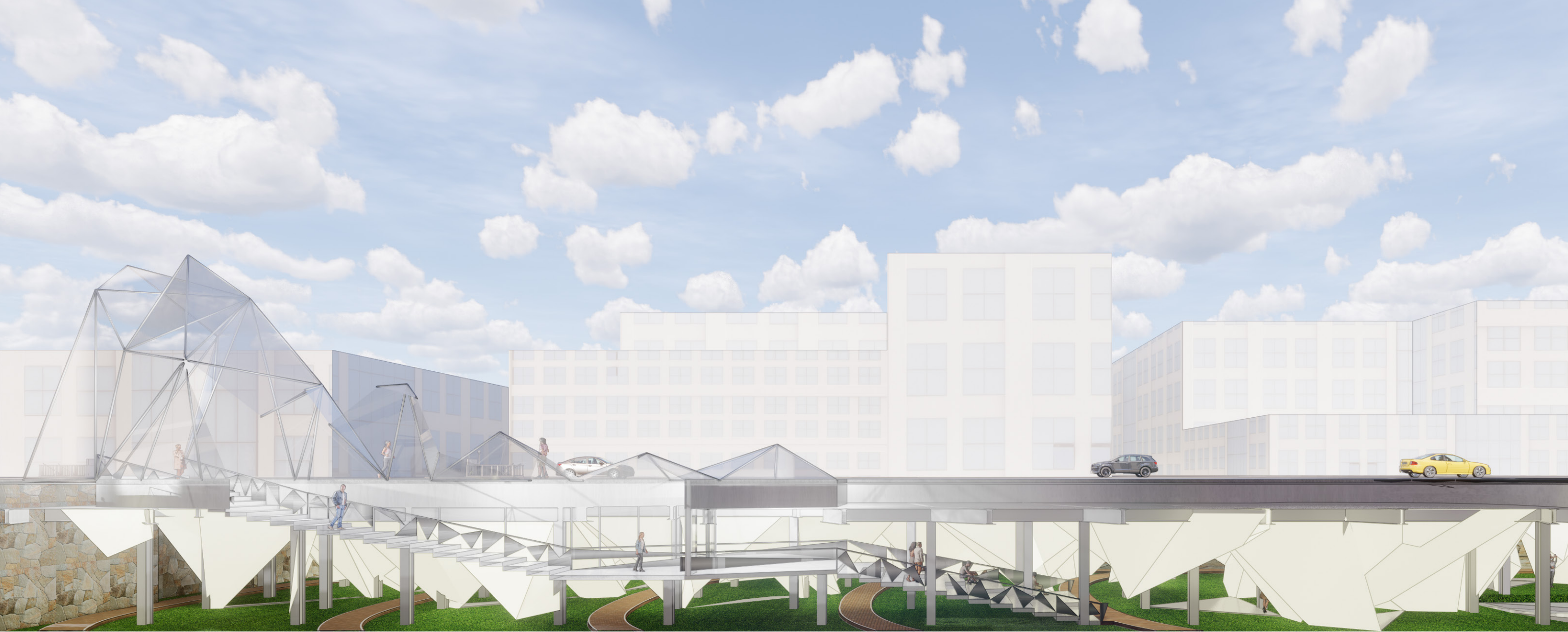
1/4" = 1" study model made from chip board, wire, and marker





The final design was made using a sturdy museum board and wood for the top and bottom. Each of the sides of the modules are colored with a spray painted finish that varies slightly in color. This versatile design can be easily installed on any wall.





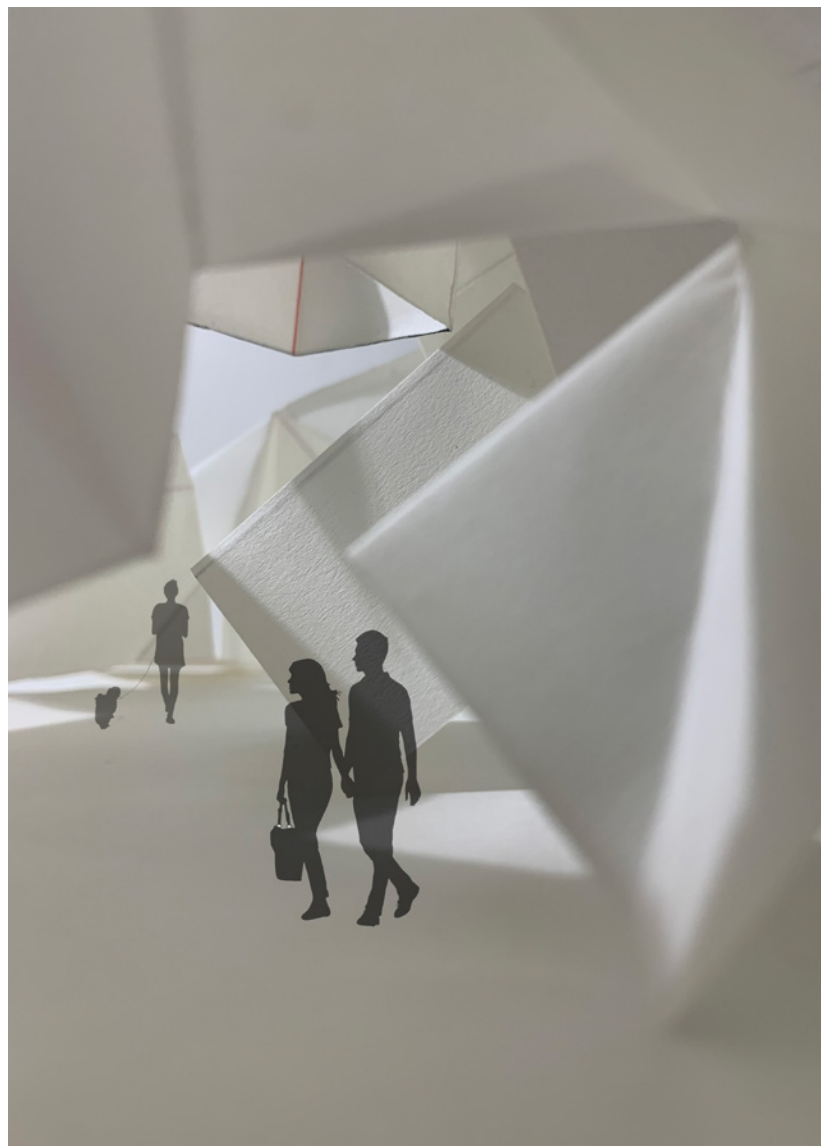
Site: The Lowline, New York, NY.

Indoor Public Space

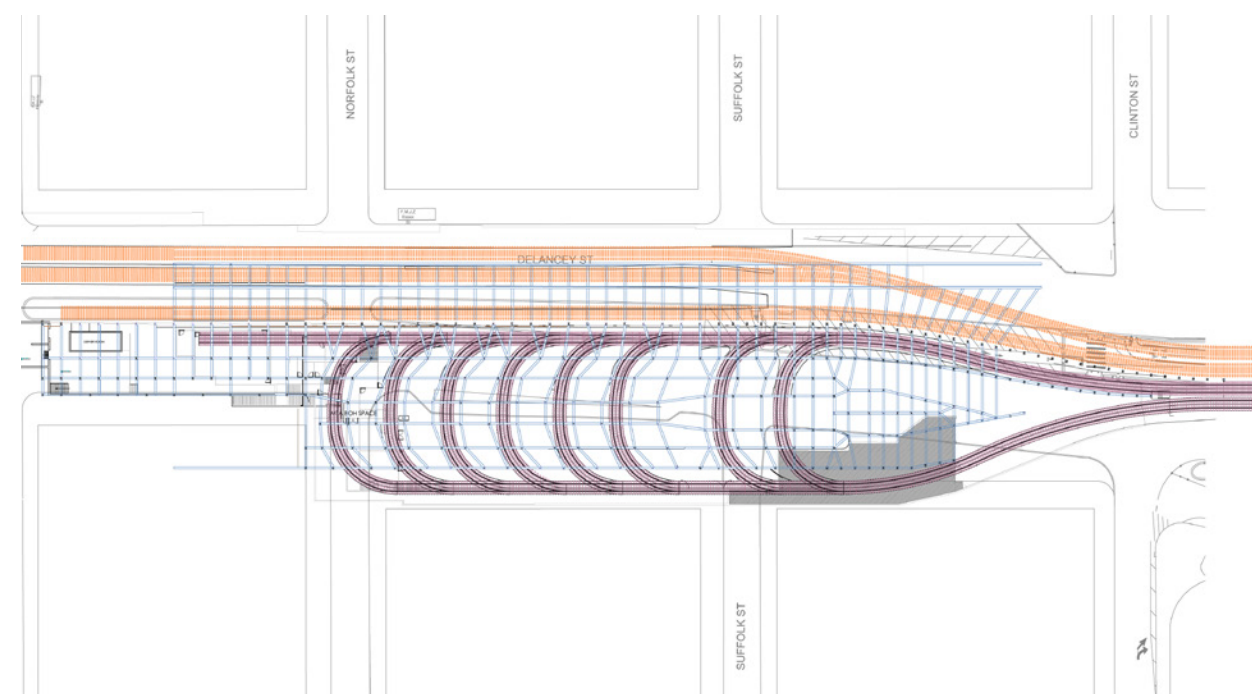
# INTERCONNECTED SYSTEMS

The design, created by deconstructing existing ceiling and trolley rail systems of the Lowline, aims to reimagine this space as a new indoor public space. Featuring glowing glass pyramids that change colors throughout the day, wooden trails along existing trolley tracks, and large spaces for picnics, sports, and performances, this indoor space redefines a park through complete artificiality. It becomes a place where one can relax, explore, and have unexpected encounters.



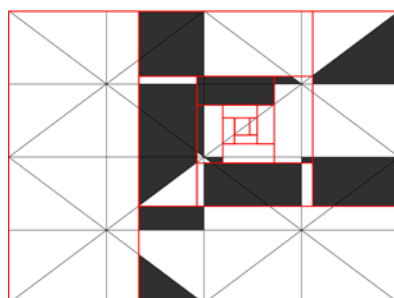


SITE DOCUMENTATION



Existing ceiling structure and trolley tracks overlayed

Space is constructed from manipulating the intersections of two separate systems. A strict rule was derived from the initial papermodels that can be applied to any two systems. Following the rule, the shape of the glowing triangles were derived from the existing trolley and ceiling systems.

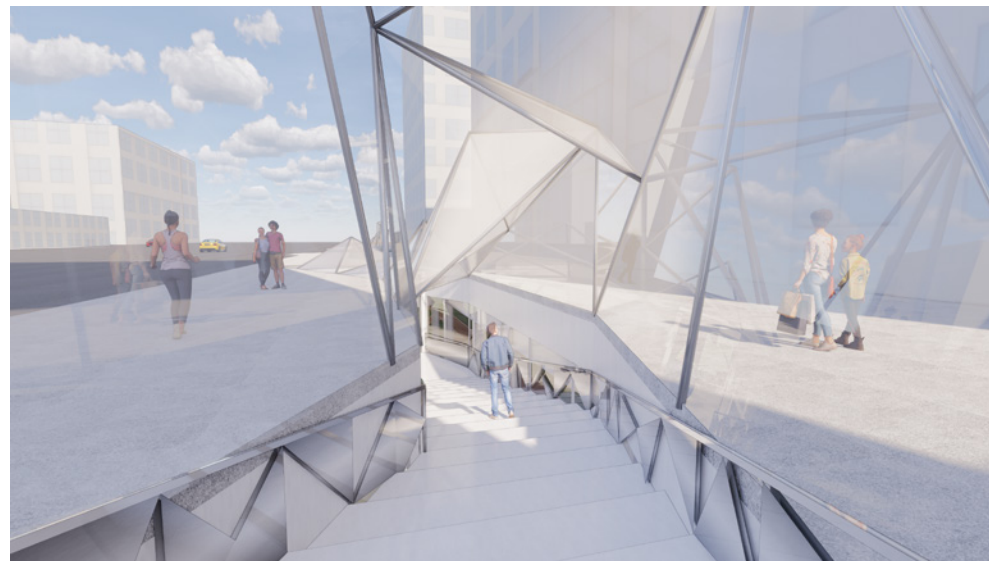




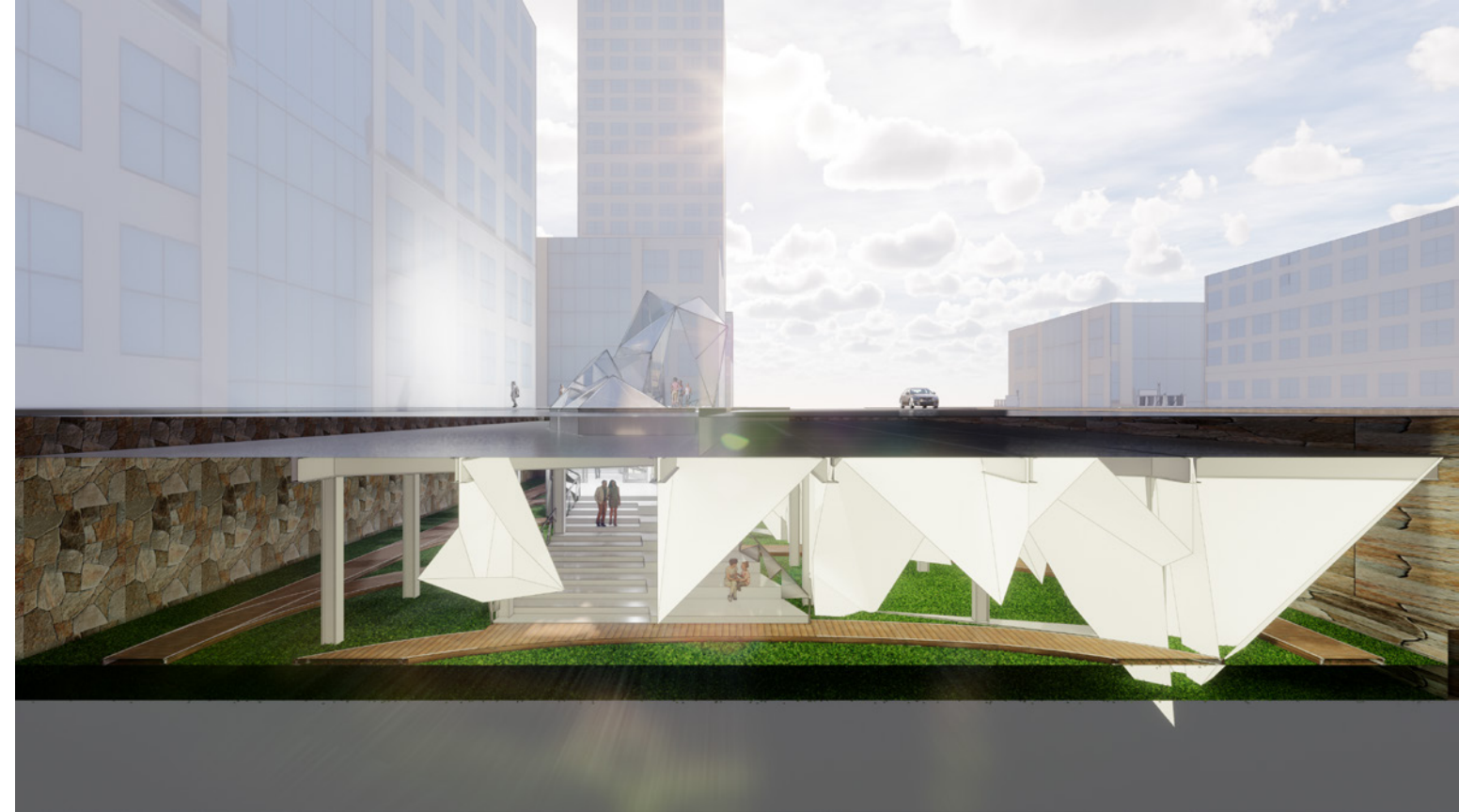
Exterior of main entrance



Staircase leading underground



Interior entrance vestibule



Glass pyramids above and below ground

The park itself is marked by the glass pyramid structure at the entrance which acts as a light beacon at night. An interior door entrance is also added to allow for easy daily operation and keeping the indoor shut after hours. A long grand staircase leads underground and separates at the bottom to form a circulation path as well as sitting area. The interior pyramids change colors from warm to cool tones as the day passes to indicate the passing of time from morning to night.

## INTERIOR PERSPECTIVES



Main staircase that becomes seating



Glowing triangles connected by triangular platforms





Site: 200 Willoughby Avenue, Brooklyn, NY.

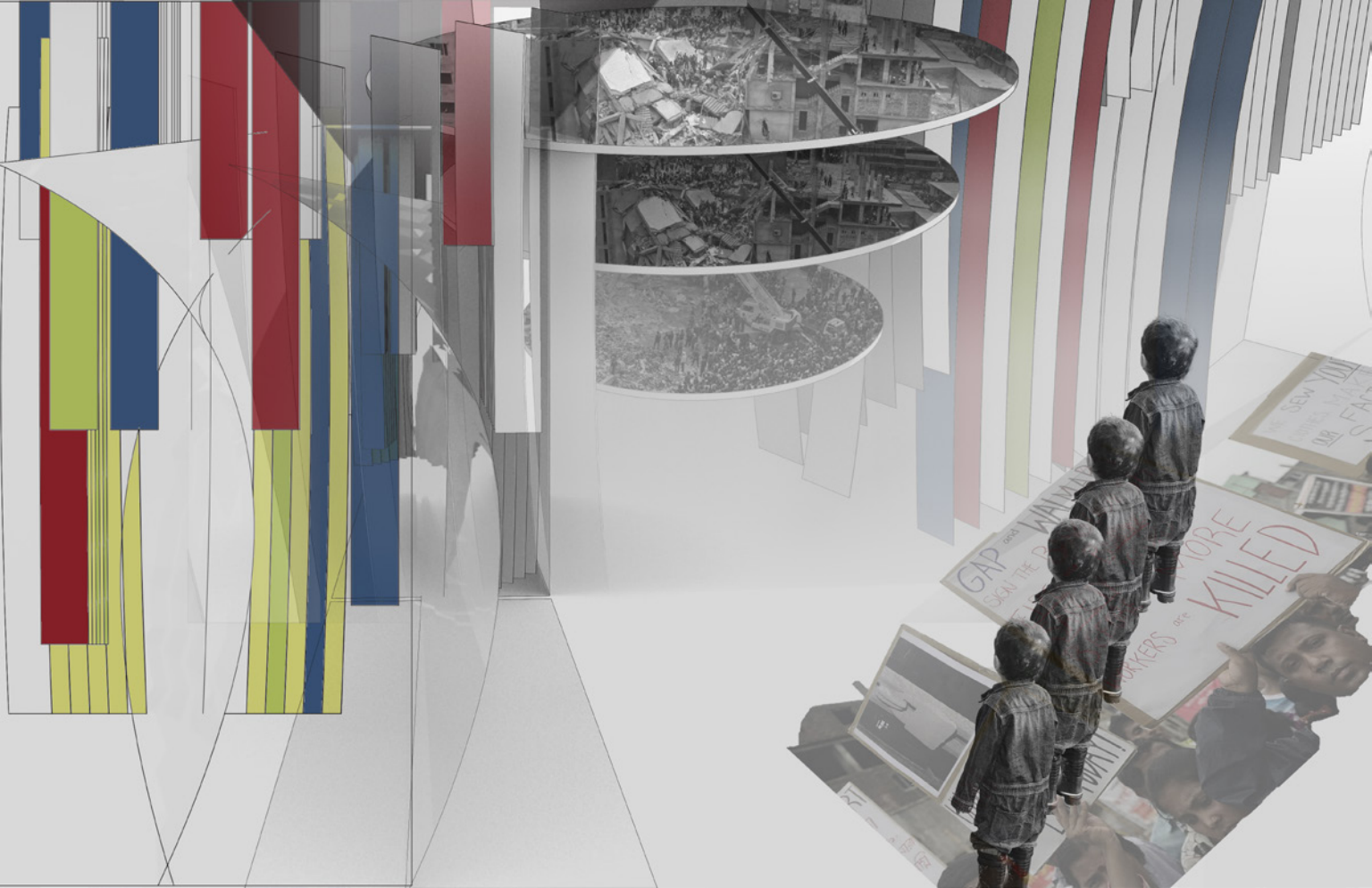
Installation

# ECHO OF SACRIFICE

With the Rana Plaza tragedy in the forefront, remembering and honoring those who are within the fast-fashion sweatshops and what they sacrifice is at the heart of this installation. Along with creating a memorial for the workers who lost their lives that day, there will be an aspect of contribution by donating to the installation using a color-coded system found on the central mobile after entering from one of two entrances. The simplicity of hanging strips of fabric alluding to structure and the motion-sensing audio combined, creates a serene environment in which an individual can calmly and reflectively commemorate the victims of Rana Plaza.

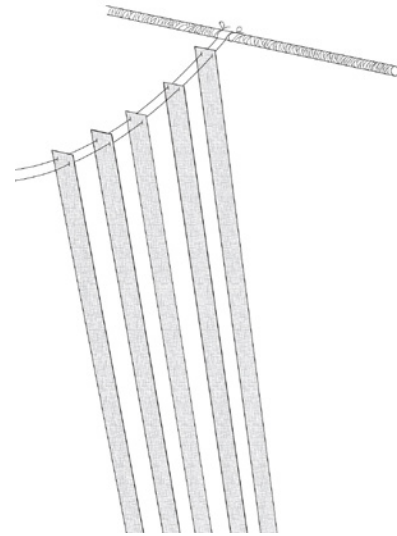
Members: Aixuan Li, Fanhao Sun, Hanxin Cen, Zhiying Liu, Liangyu Zhou, Yifan Hu, Yifei Xie, Leo Yang, Mily, and Shelby.



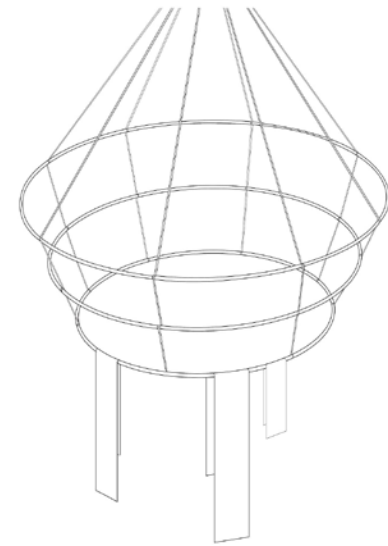


Concept Collage

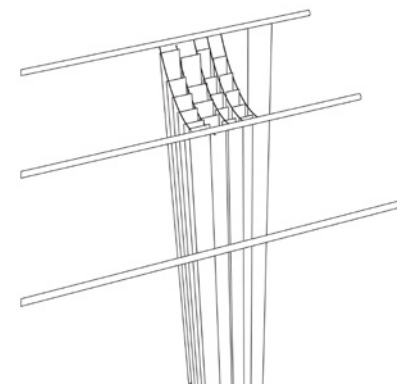
The directive is achieved by creating an intimate, secluded environment for an individual to occupy and have a moment to reflect on the lost lives of Rana Plaza. The users can reflect on their own actions and contributions to fast fashion, and consider the cost behind the bargains we benefit from the, seemingly, convenient fast-fashion industry.



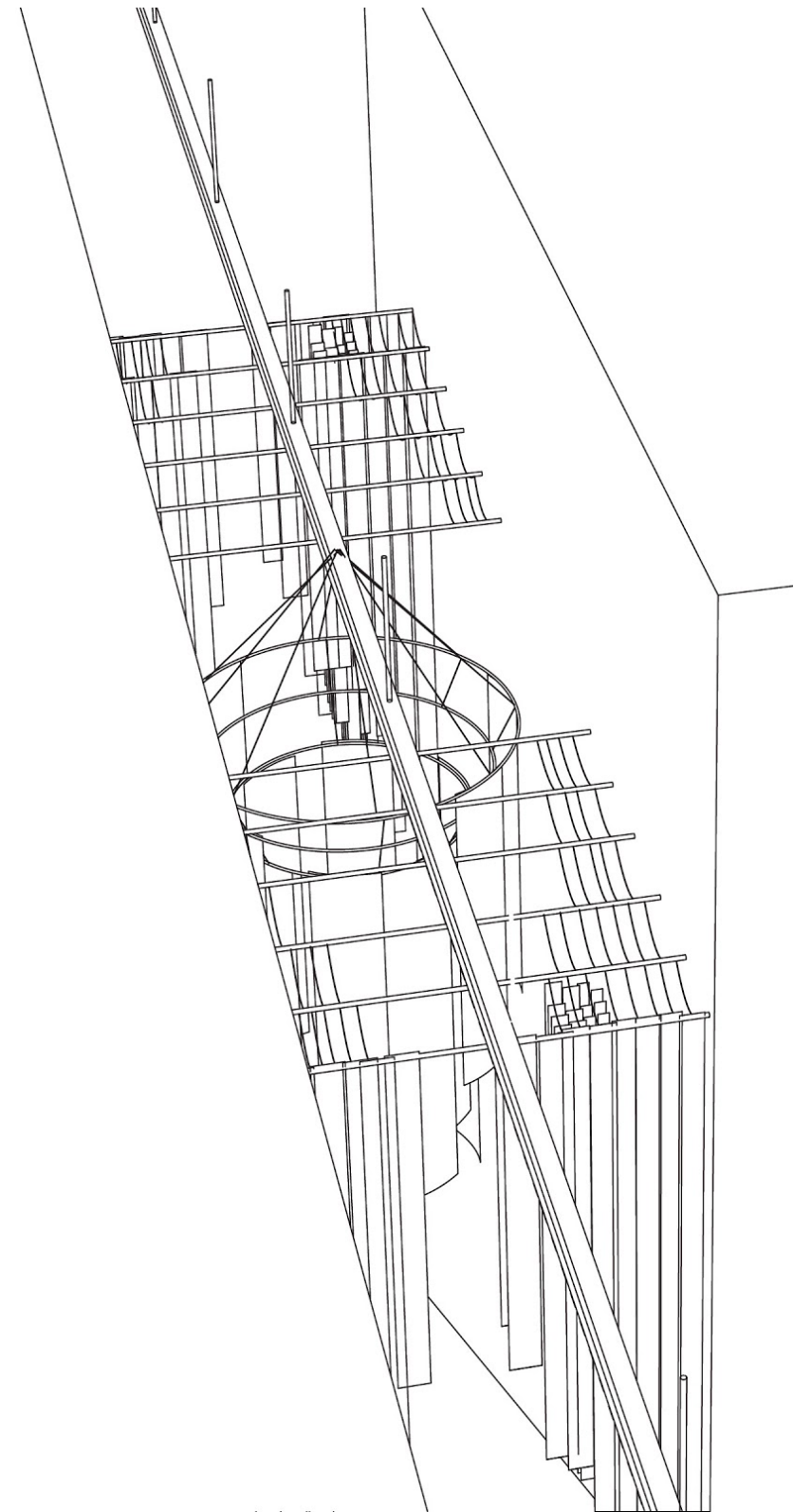
Threading



Donation Area

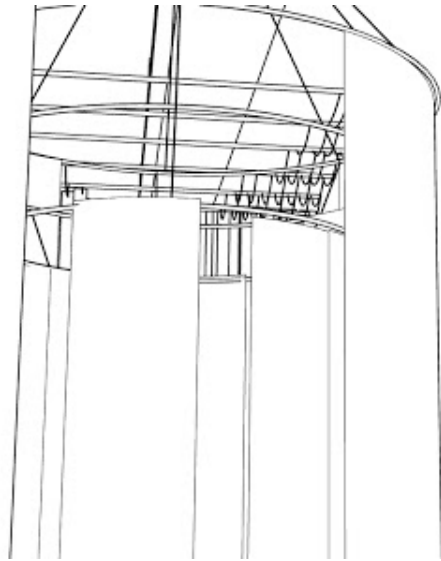


Hanging





Donation Area



Donation Area Detail



Entrances on either side

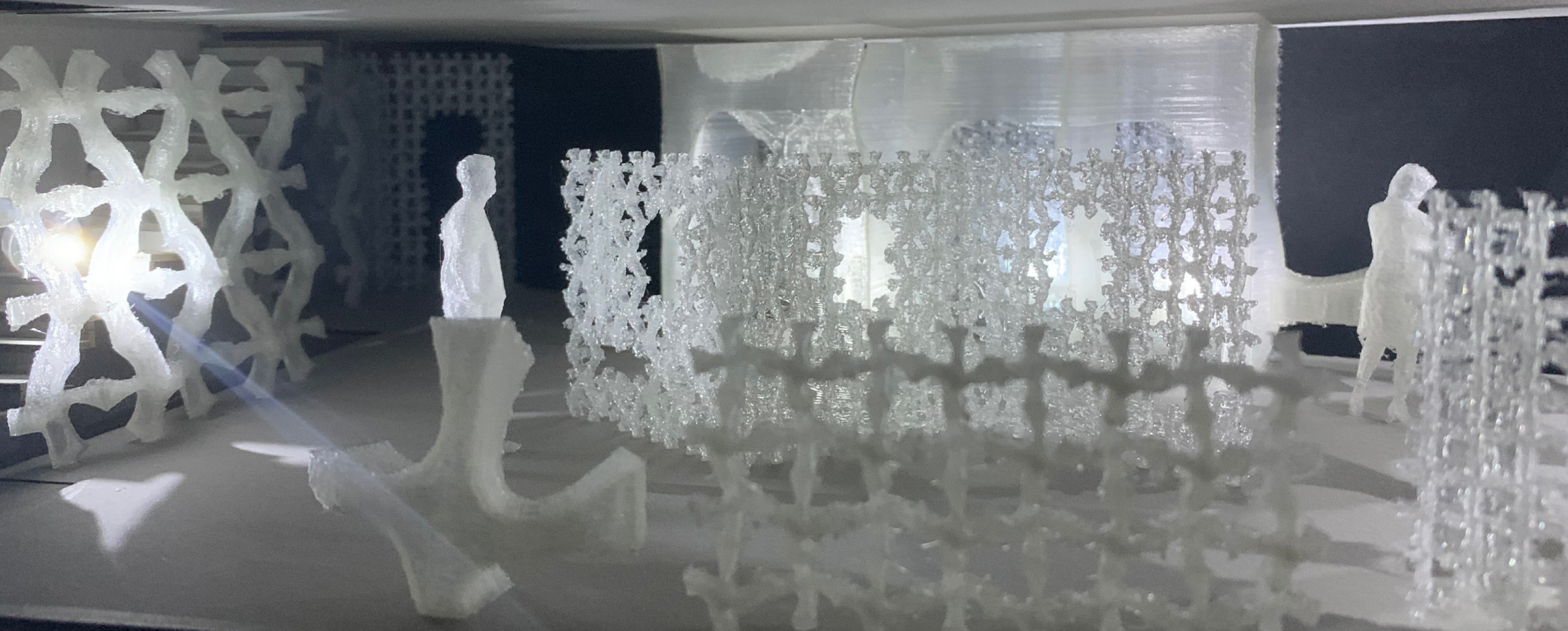
Donation area with speakers located at the top



Long Section Collage

Along with creating a memorial for the workers who lost their life that day, there will be an aspect of contribution, of giving back to the fast-fashion industry: adding and donating fabrics to the installation. This is achieved by a color-coded system in which the occupant can distinguish easily. The entrances are two hollows in which an individual can enter and walk through for a central mobile to be revealed, in which users can add donations to the mobile.





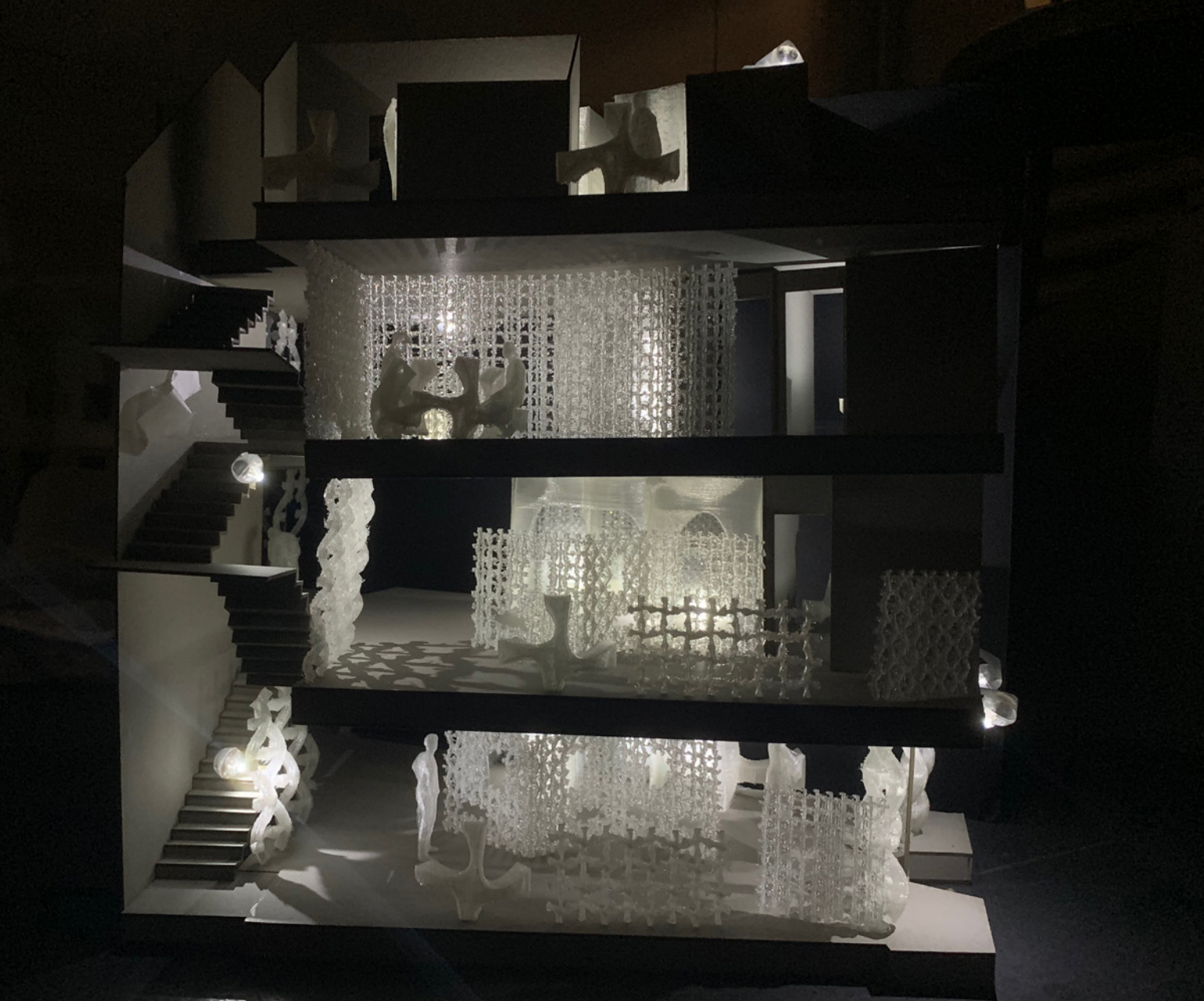
Site: 518 Hudson Street, New York, NY.

Retail

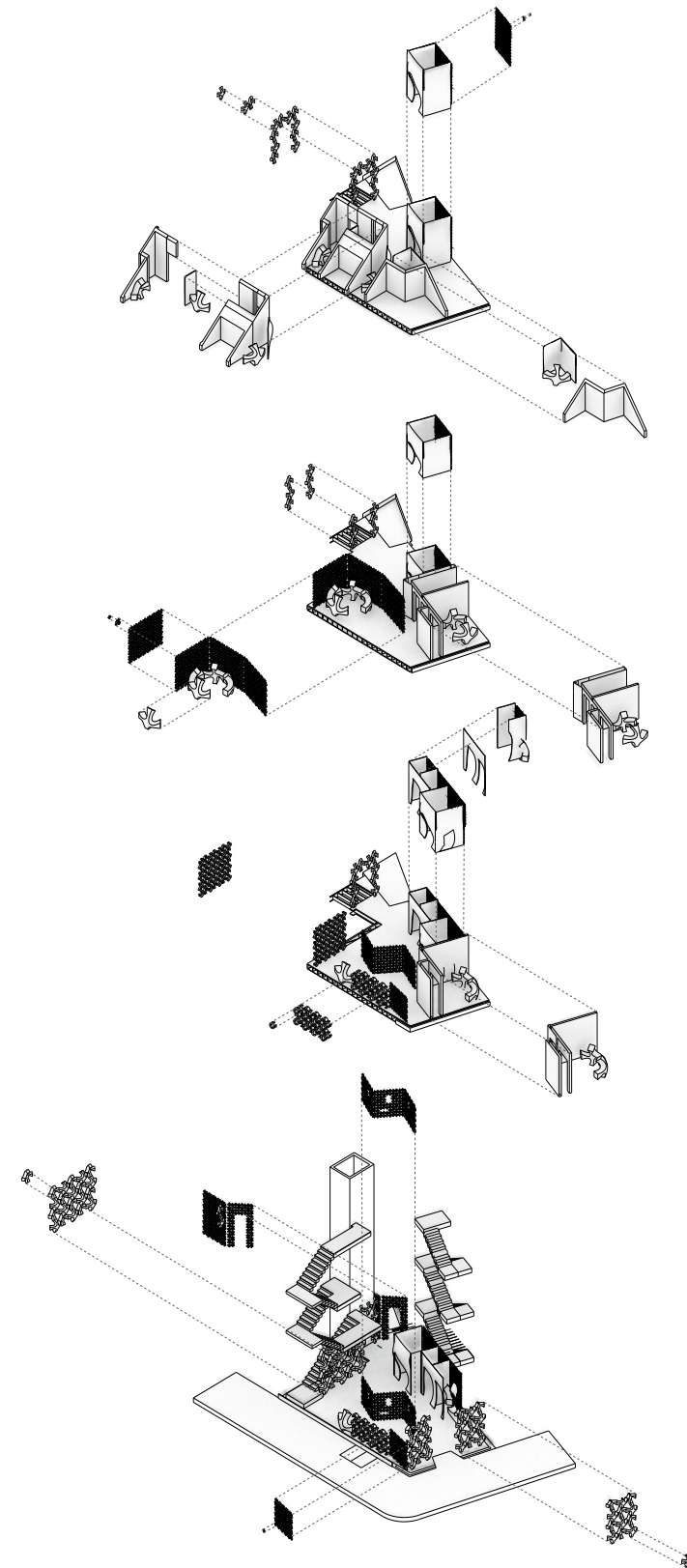
# MODULAR INFINITY

The objective of this project was to integrate a medical facility into a Housing Works' retail program to aid their cause of helping those with AIDS/HIV. The modular design was devised from the Housing Works structural system in which each branch supports another. Utilizing the changes in scale, the modules become the bases for seating display, and even some parts of the architecture for this four-story building.

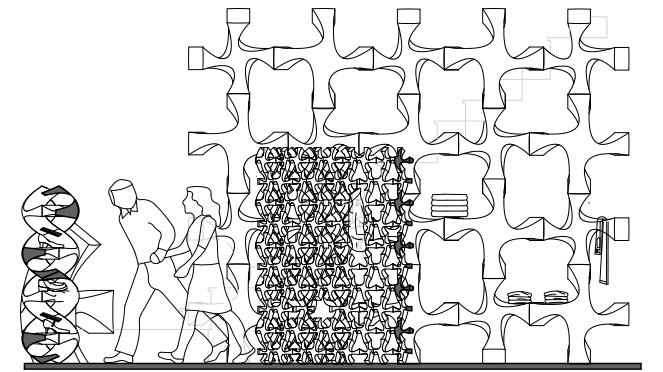
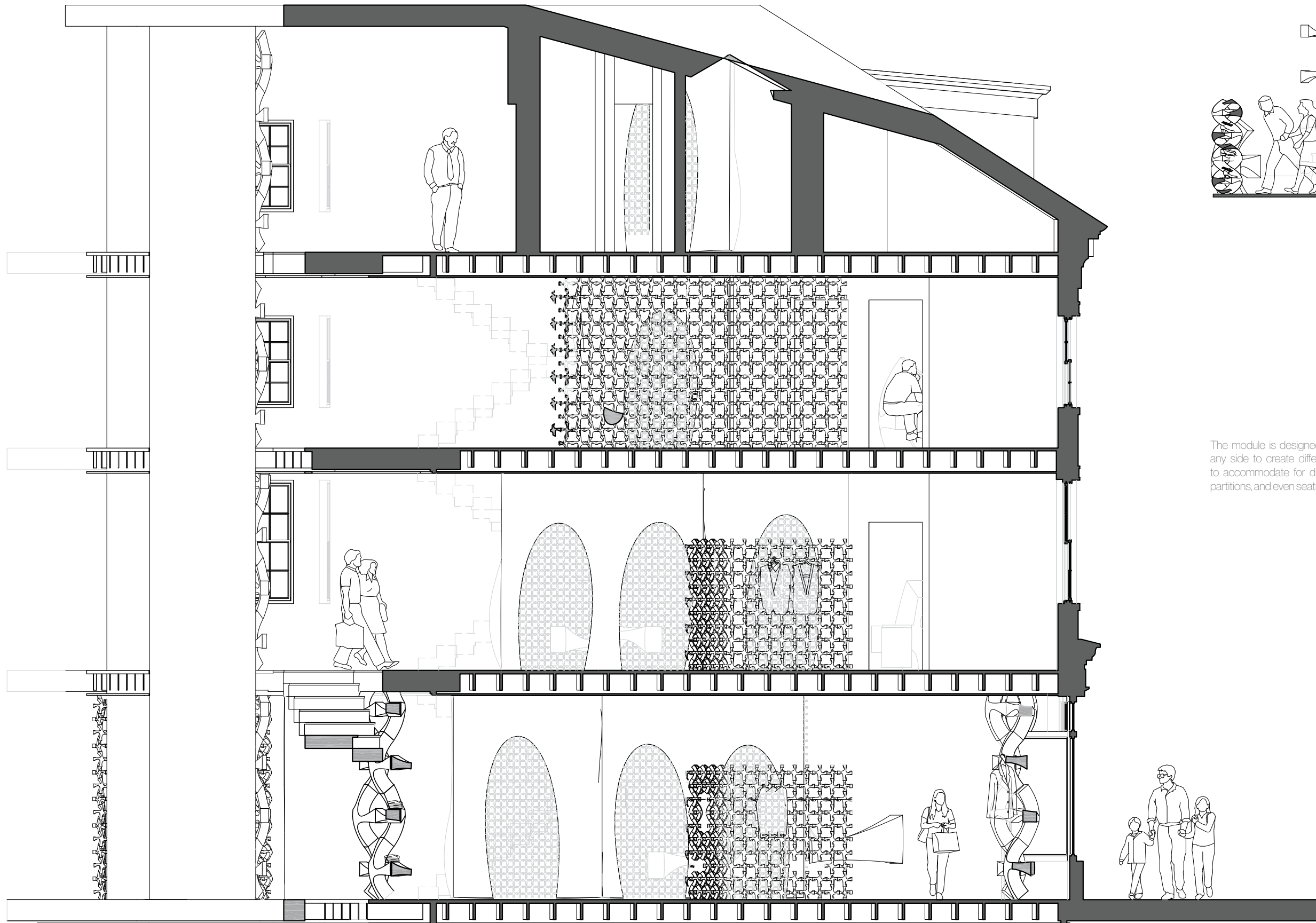




Out of consideration for the convenience and privacy of the users, the first two floors contain the retail and donation area while the top two are the medical facility. The degree of privacy increases as indicated by the apertures within and the height of the partitions.







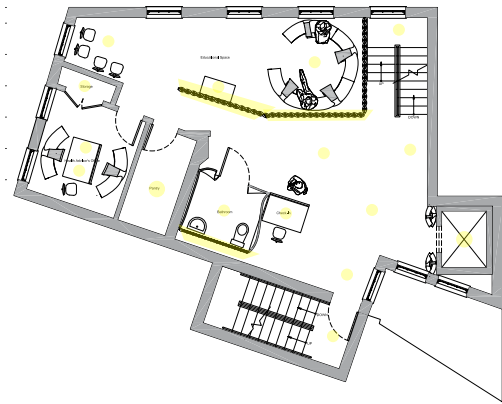
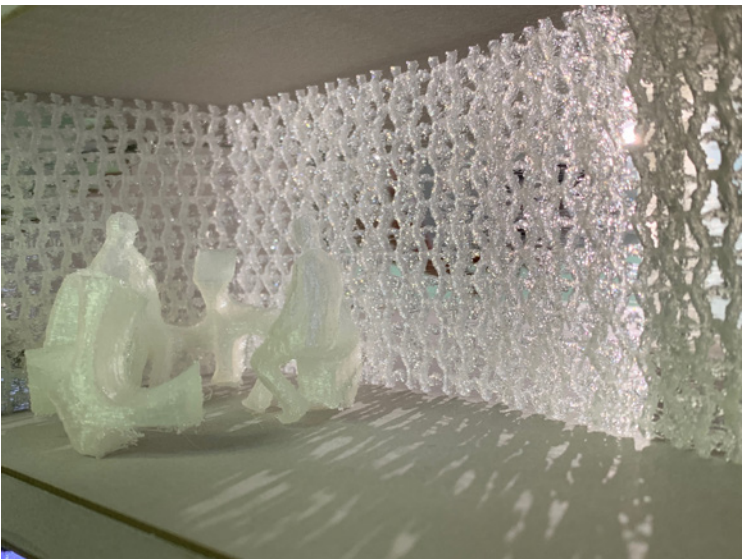
Detail of retail displays on the first floor

The module is designed so that the versatile pieces can be attached on any side to create different forms. The scale of these modules changes to accommodate for different usage such as shelves, hangers, counters, partitions, and even seating.

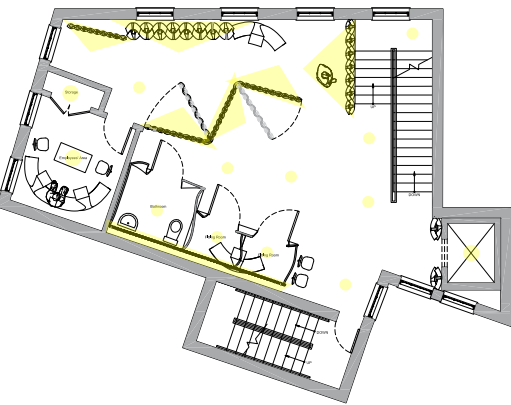




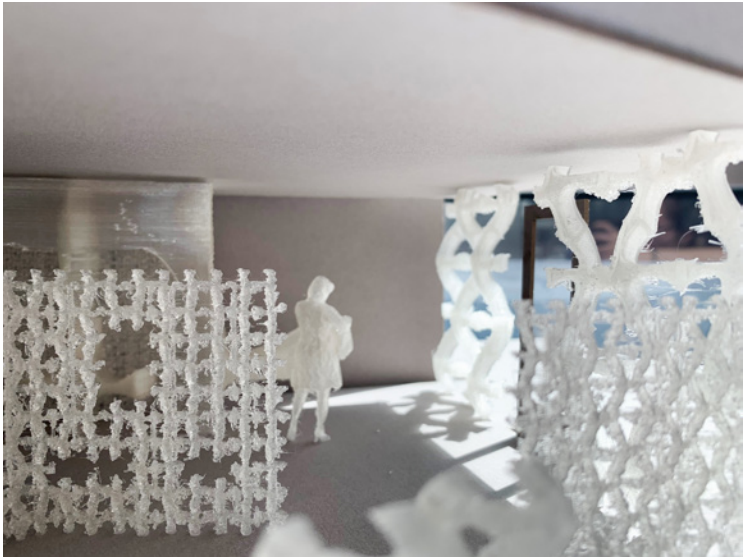
Third floor educational space



Second floor staircase and elevator

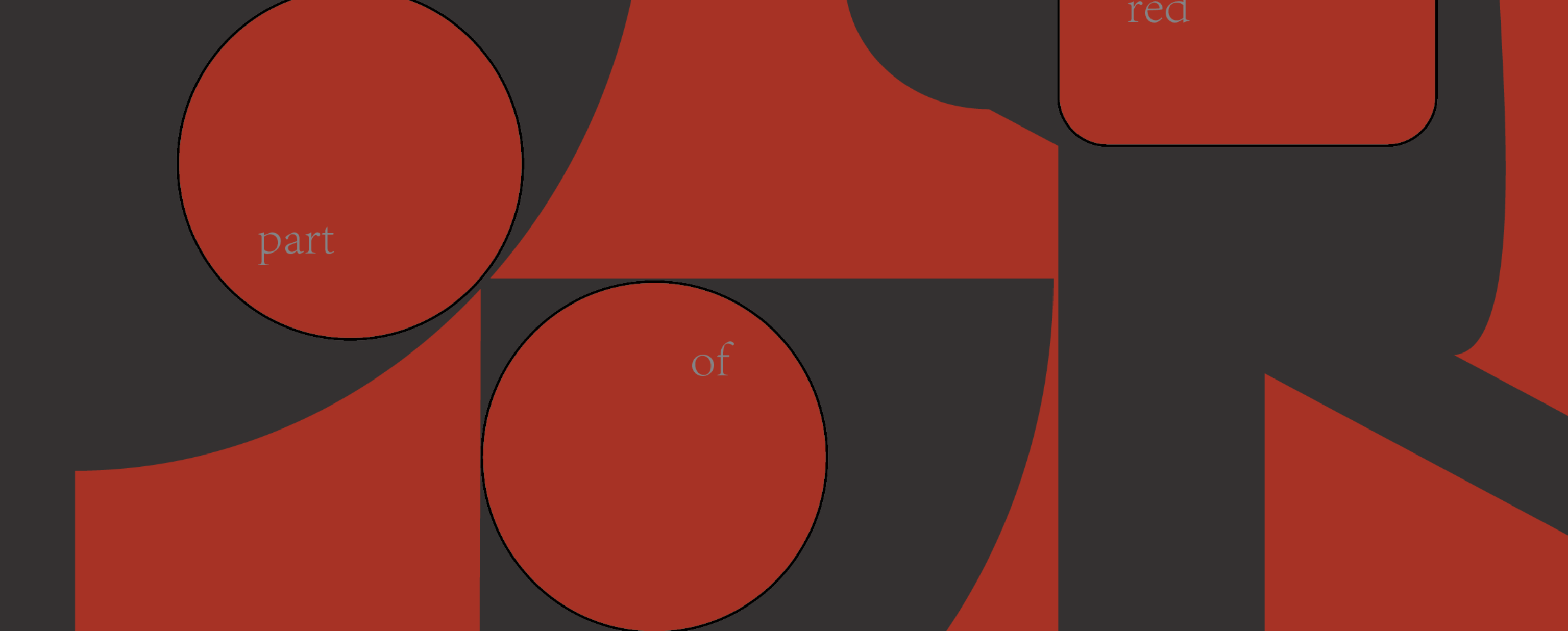


First floor retail and window displays



Lighting Diagrams





Site: 191 Smith Street, Brooklyn, NY.

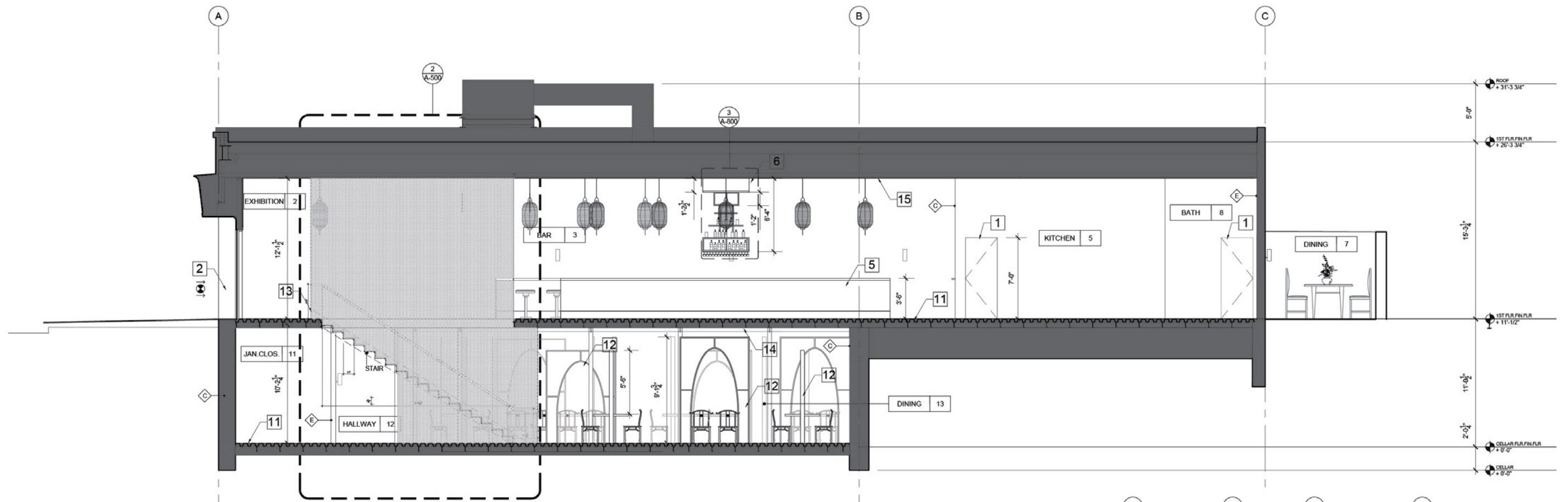
Bar / Restaurant

POR:

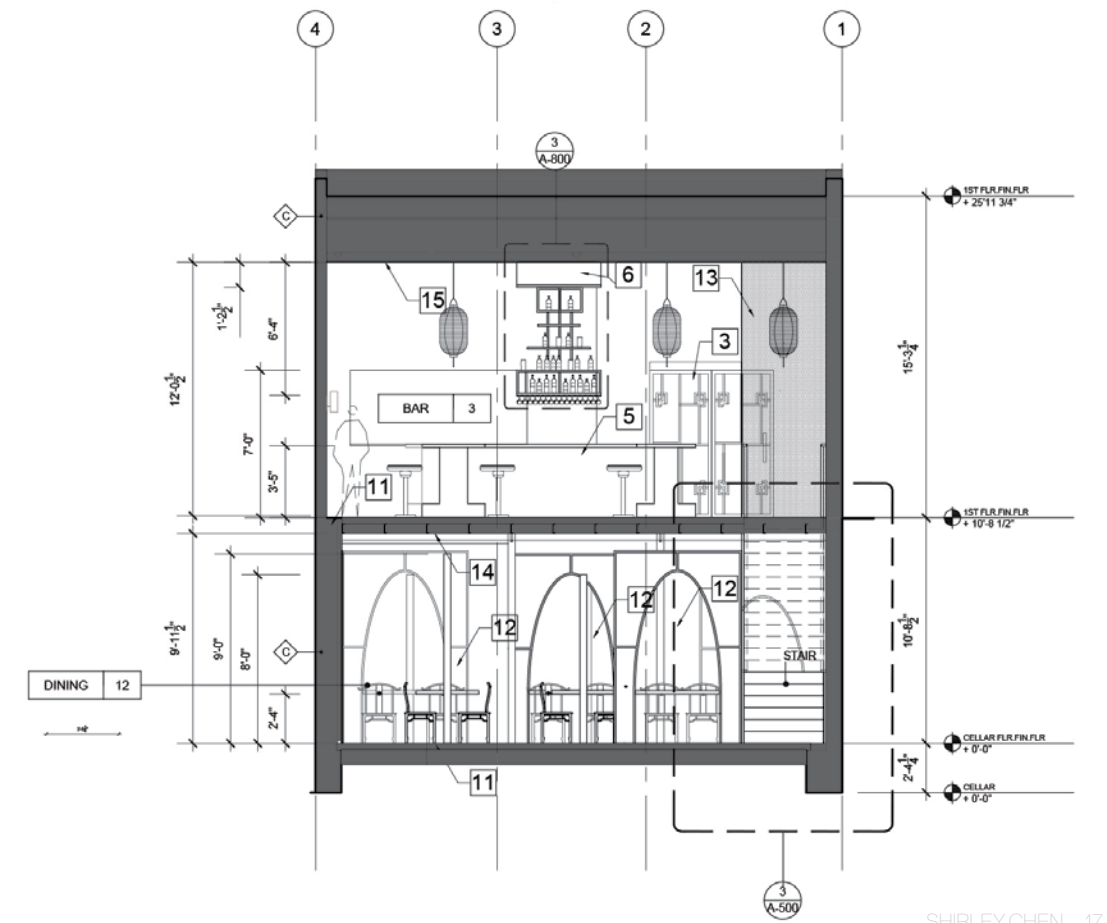
# PART OF RED

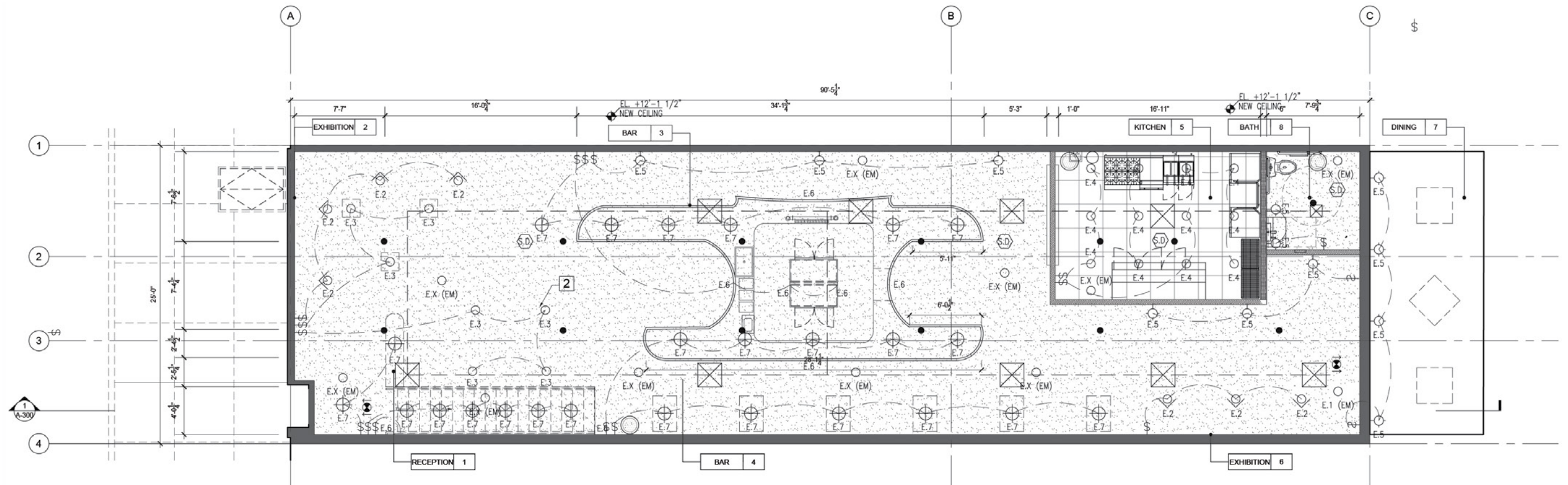
The goal of this project was to design a new restaurant/ bar within an existing two-story building. The color palette, custom partitions, and lanterns were inspired by Asian culture. The dark exterior is contrasted by the vibrant interior in order to represent the timid outer versus passionate inner personality. Through a set of technical drawings, the layout, materials, and construction methods were explored.



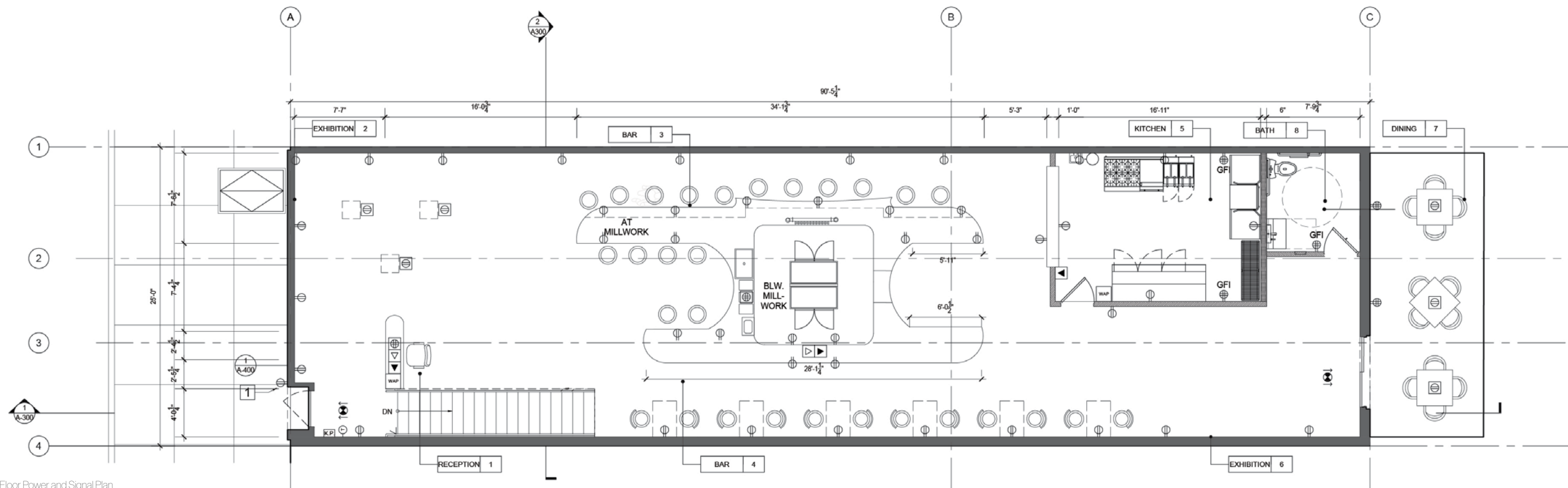


The first floor consists of art exhibition spaces and a large custom bar with indoor and outdoor seating as well as the kitchen. A perforated metal stairwell leads the user to the cellar floor where the main dining area is located with rounded tables and custom designed Shoji screens that glow from within. Hidden within a narrow hallway are two ADA compliant restrooms and the janitor's closet. The primary color scheme consists of red and black for a warm and intimate vibe.



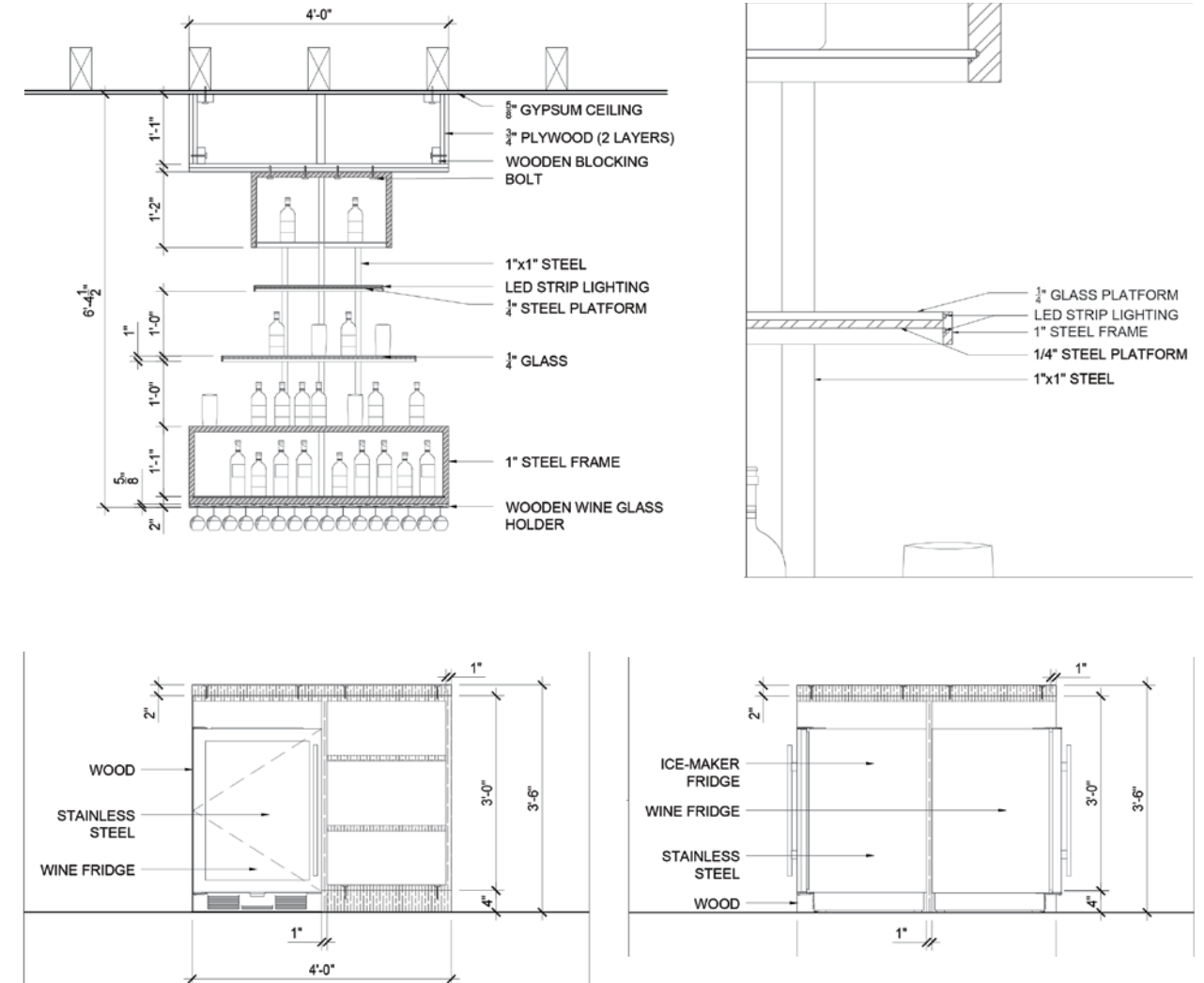
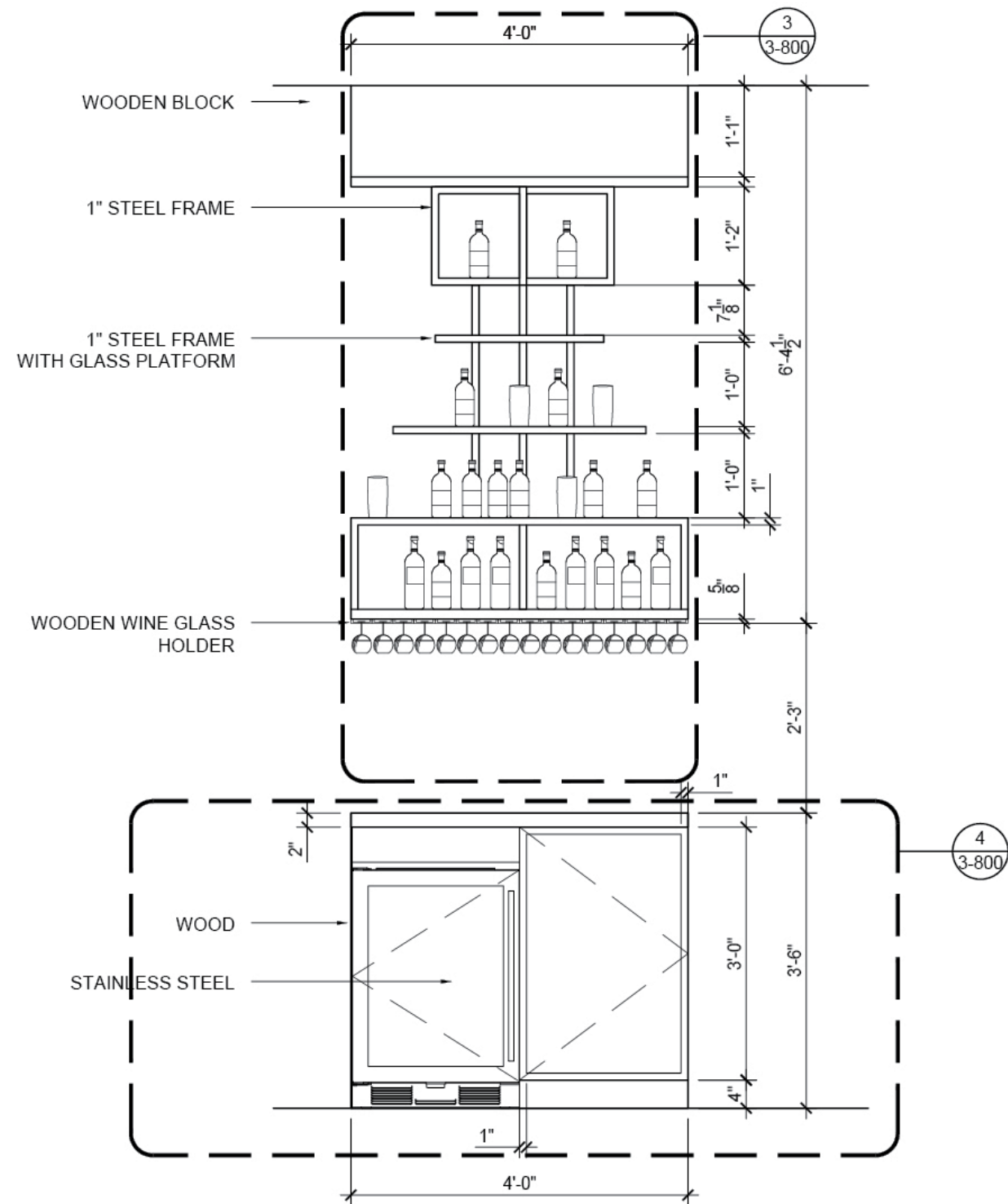


First Floor Reflected Ceiling Plan

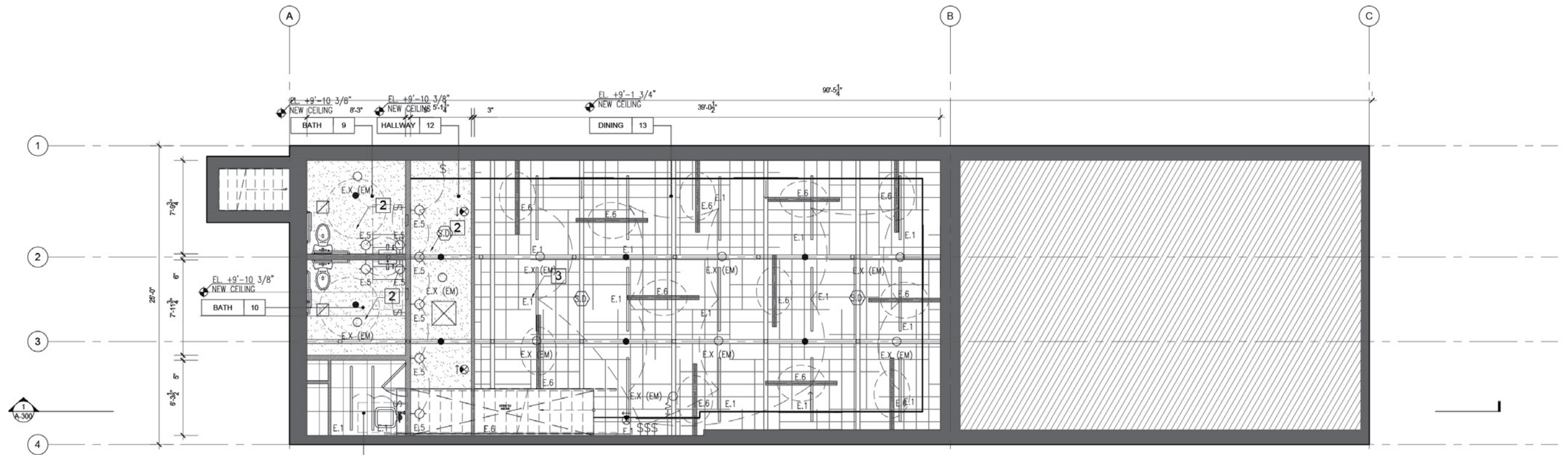


First Floor Power and Signal Plan

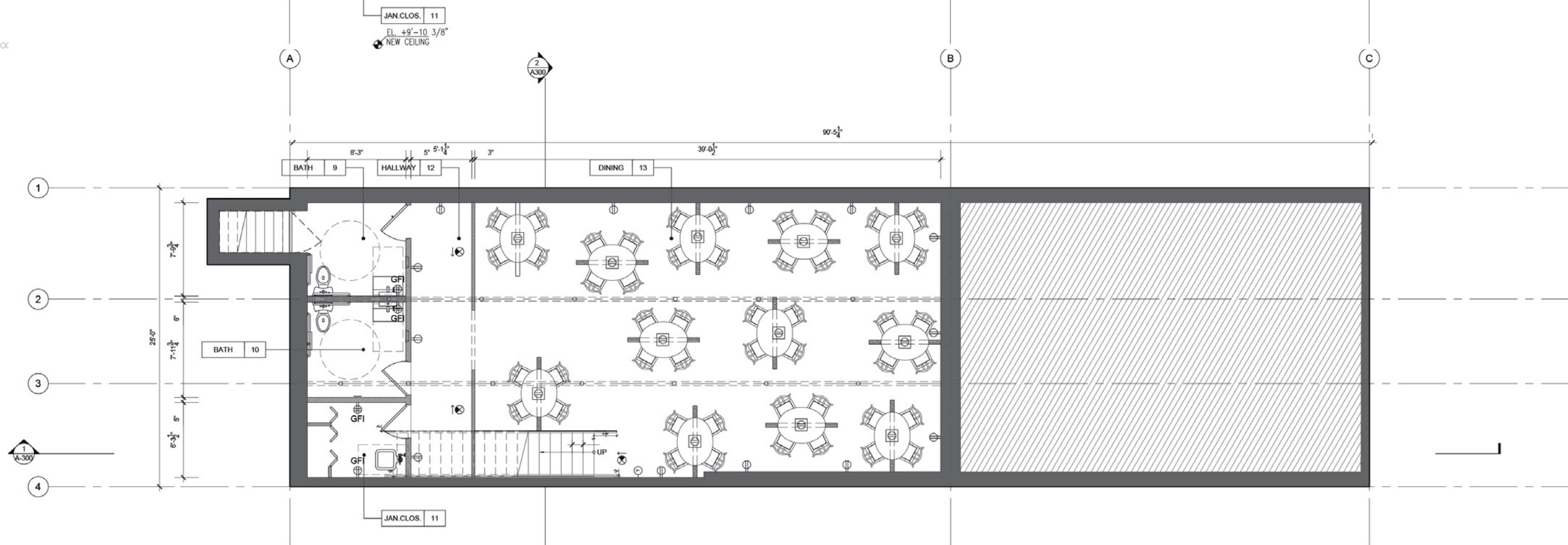






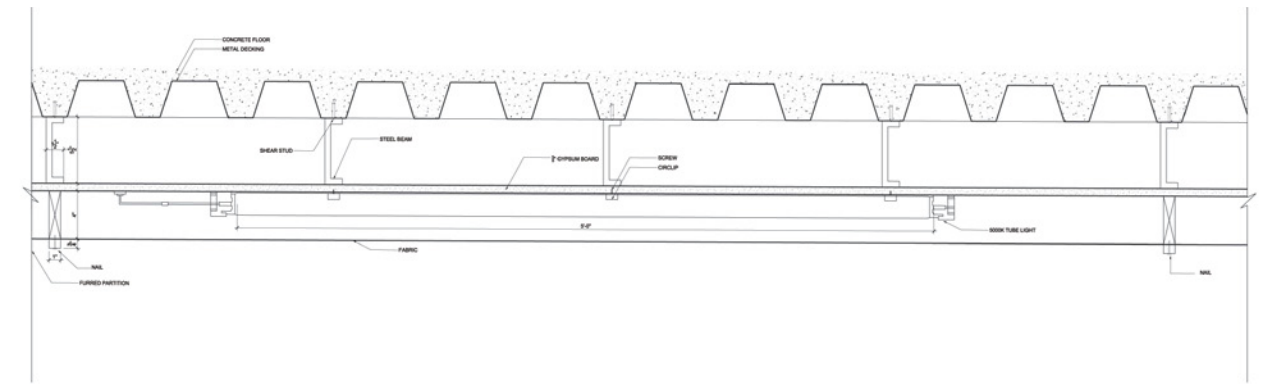
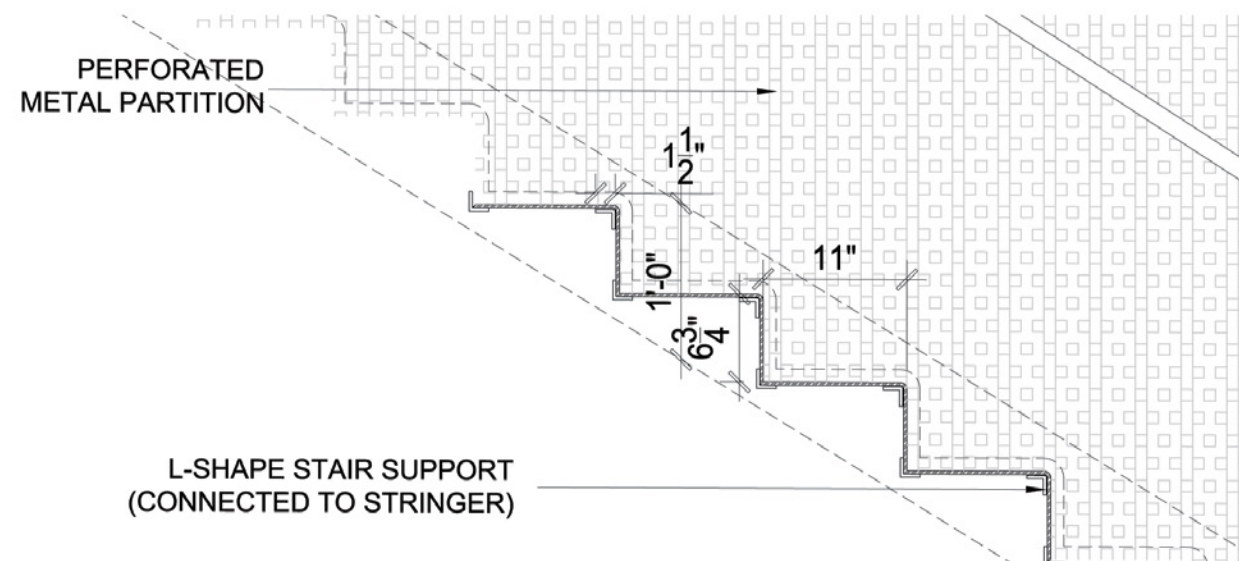
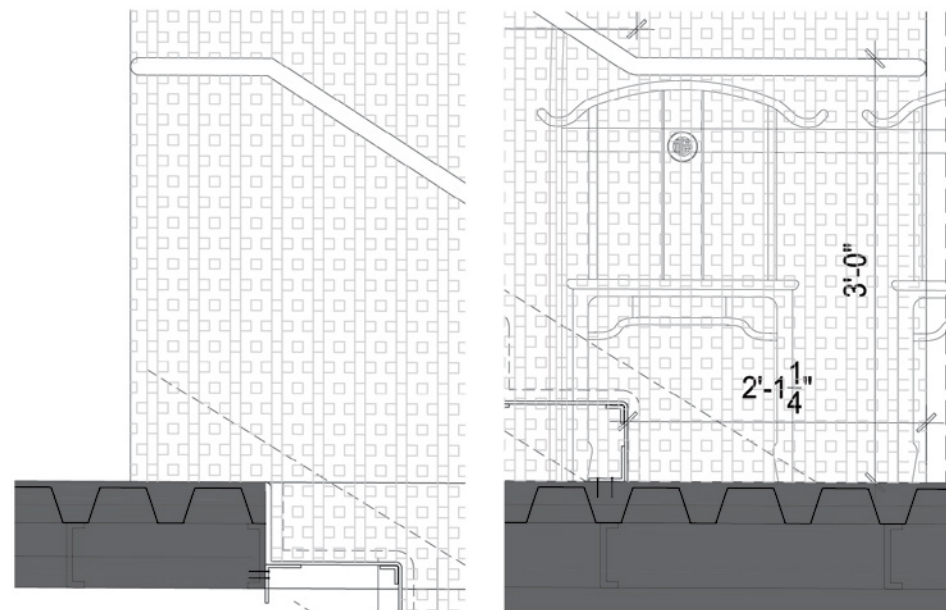
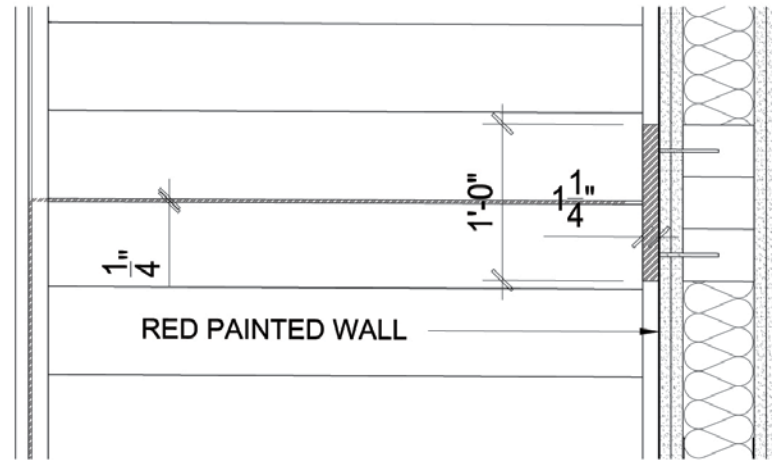


Cellar Flo.

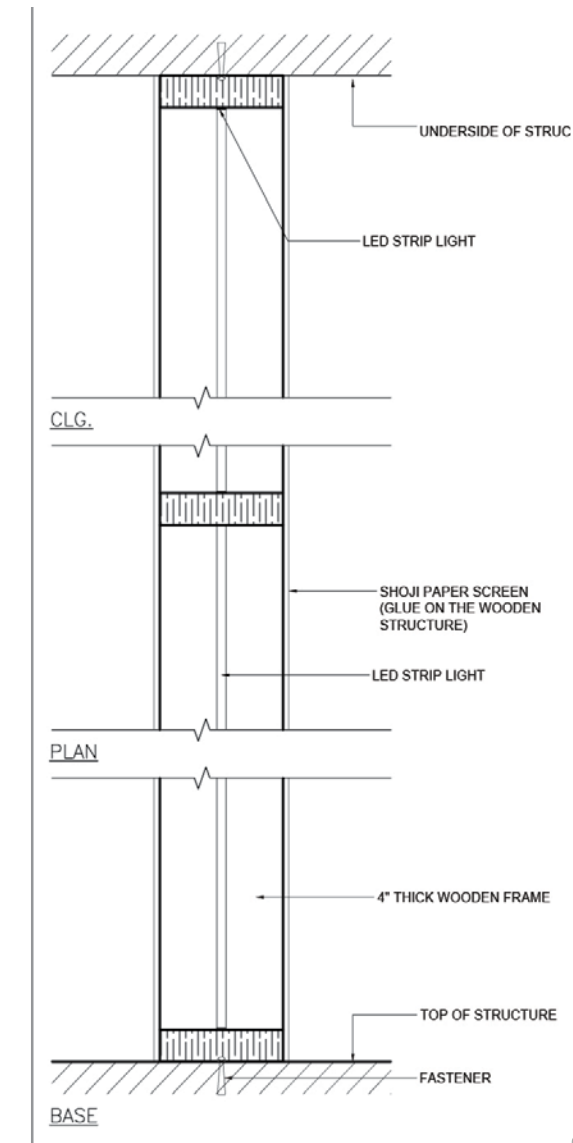


Cellar Flo.





### Custom Cellar Fabric Ceiling Detail



### Custom Partition Detail





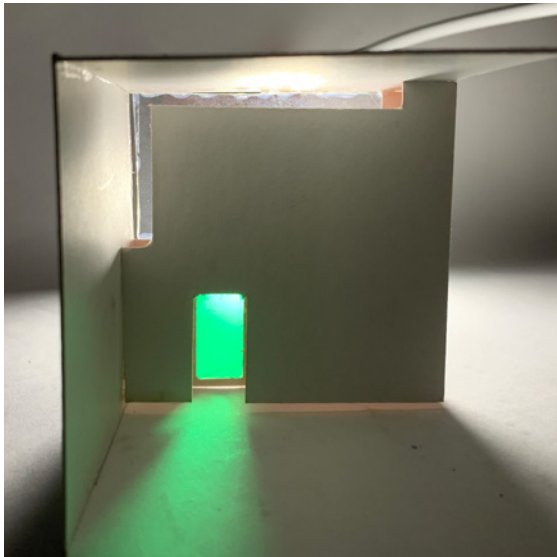
Site: 1065 Fulton Street, Brooklyn, NY.

Townhouse Residence

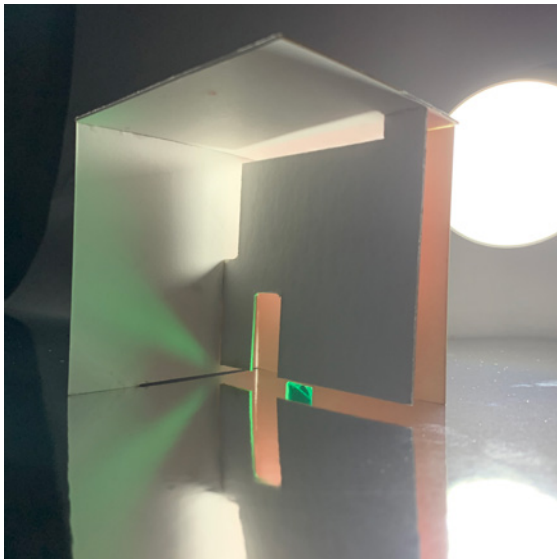
# DWELLING IN COLOR

The design, driven primarily by the clients' occupation in illustration and photography and the child's red-green color blindness, focuses on a family-oriented space in which the clients are able to experience various colors through their daily lives as they work in their home. Featuring an open and lofted space with the colors red, yellow, green, and blue changing at various times of the day due to sunlight, the home becomes a place for gathering and experiencing.

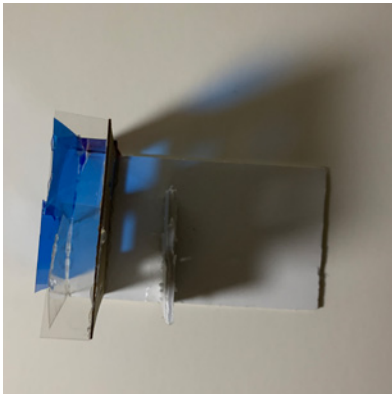
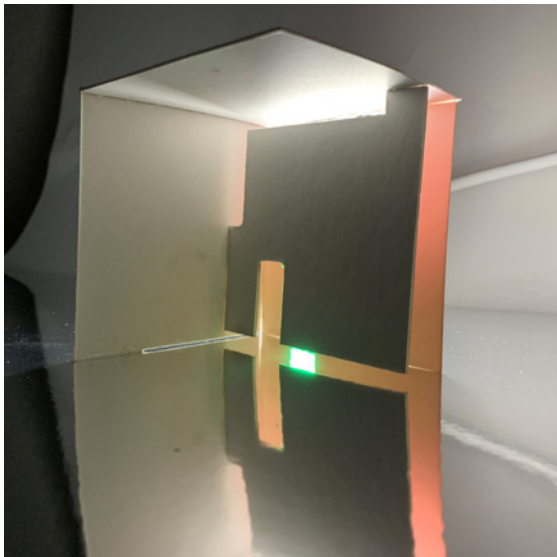
Light shining through a green translucent and clear transparent material and reflected off an off-setted red colored material to create the glow with two different colors.



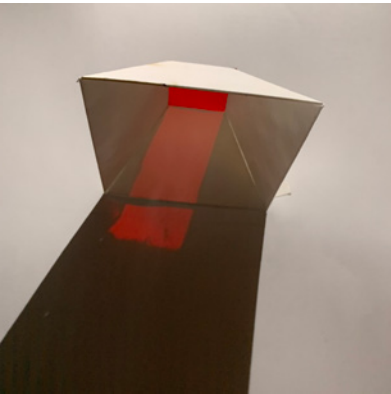
The color and angle of the glow changes based off the location of the apertures and light.



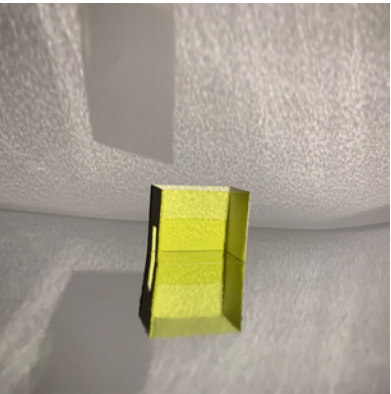
A reflective bottom surface allows for the extension of color and surface through space.



Light shines through a blue translucent material and passes a solid material with apertures.

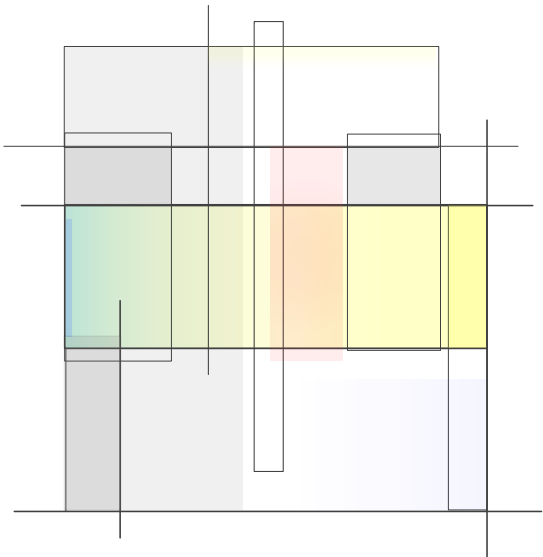


Light passes through a red translucent window and the color is reflected onto the angled surfaces.



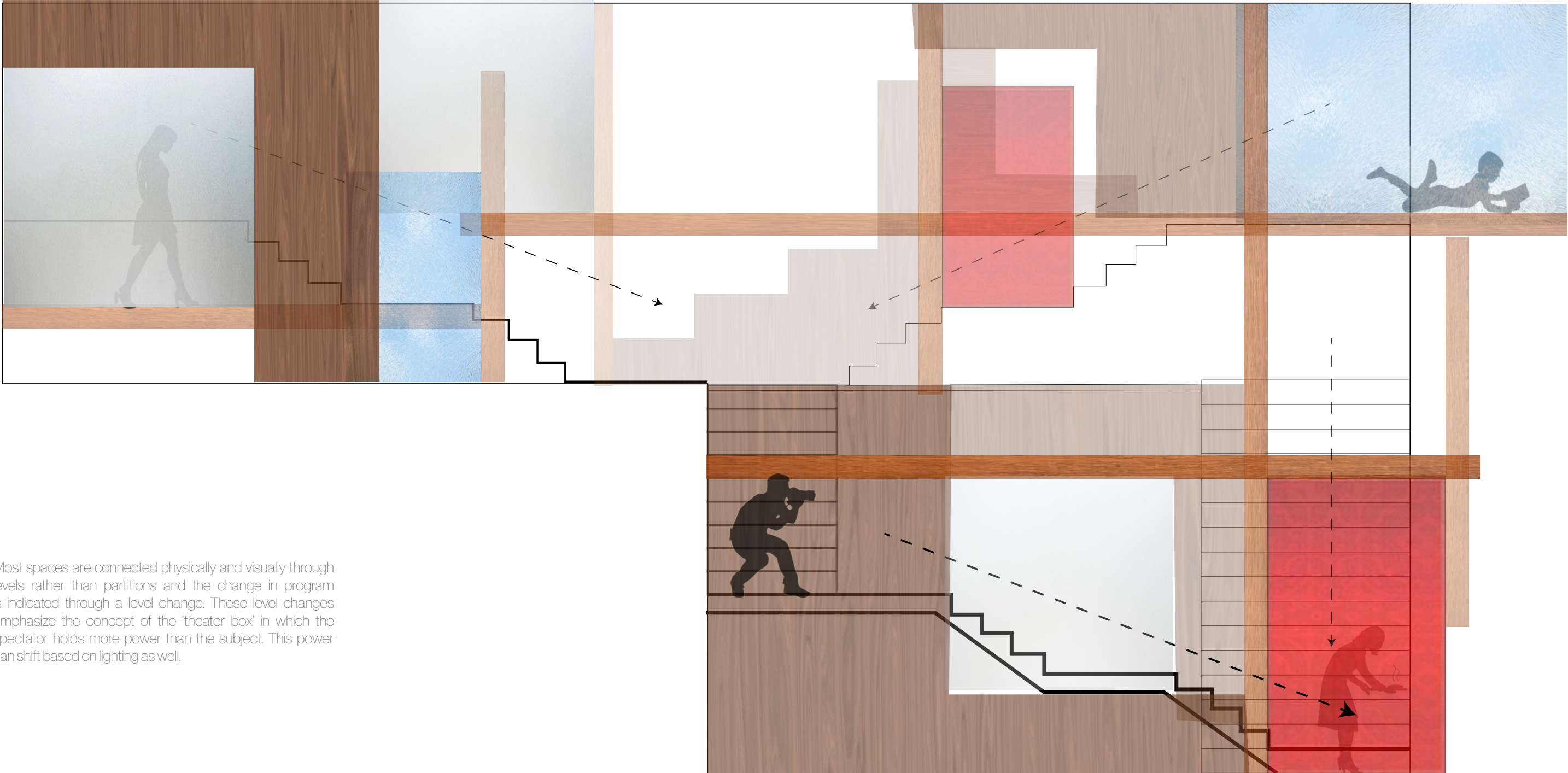
Looking through a yellow translucent material and extending the color through a reflection.

SPACE DIAGRAM



Through a series of color psychology research and lighting model studies, the choices of color are red, blue, yellow, and green. The primary colors are chosen to allow for the gradual change from yellow to purple as the day passes. Green was chosen on the window sill of the child's room because his color blindness causes him to see green as yellow, thus allowing him to experience the morning yellow like the rest of his family. The colors are aligned through the center of the space allowing for the colors to mix and change during different parts of the day.





Most spaces are connected physically and visually through levels rather than partitions and the change in program is indicated through a level change. These level changes emphasize the concept of the 'theater box' in which the spectator holds more power than the subject. This power can shift based on lighting as well.





Living Room / Kitchen



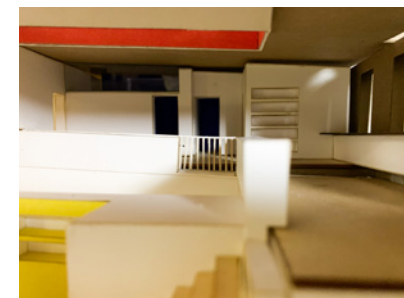
Short Section Perspective

A large loft connects the two levels physically and visually to create an open and airy space. The carved out forms creates doorways, windows, shelves, and even working surfaces. Slits within the walls and floors allows for the colors to slip into different rooms throughout the day. Platform extensions and stairs on the exterior wall allow the users to experience the outside view daily as they move through the house.

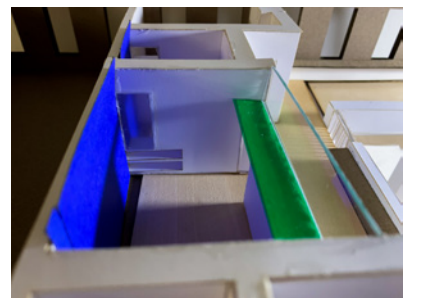
#### MODEL PHOTOS



Studio



Library / 2nd Floor



Child's Room



2ND FLOOR

Early Morning



Afternoon



Sunset



CHILD'S ROOM

Early Morning



Afternoon



Sunset



