



Process Book

Suture the Green Space

INT401_01 Repair, Reuse, Reactive
Qianrong Fu

A white paper bag, possibly a shopping bag, is shown with several green plastic ties or clips attached to its edges. The bag is slightly crumpled and has a small, bright light reflecting off its surface. The background is a plain, light-colored surface.

Repair Project: From Package to Bag

Site



My site for repairing is a plastic snack packge. The package itself does not have severe damage, but since the top is removed in order to get things inside, this plastic package will be disposed later. Therefore, I am taking this package and would like to repair it into something could be used rather than being disposed.

Material

Plastic & Tin Foil

Plastic is waterproof, and the tin foil that could prevent the light. They were hot sealanted together, which could prevent the air goes inside the package and changes quality of the food. The factory printed the advertisement at the front side, and the back side could is the silver color of the foil.

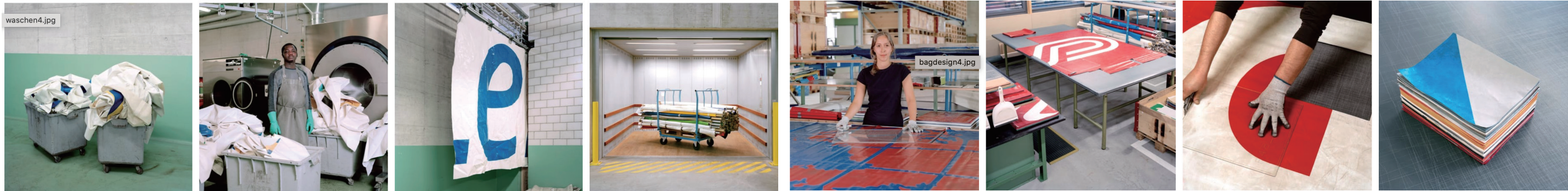


Case Study:Freitag: From Truck to Bag



TRUCKSPOTTING

CUTTING TARPS



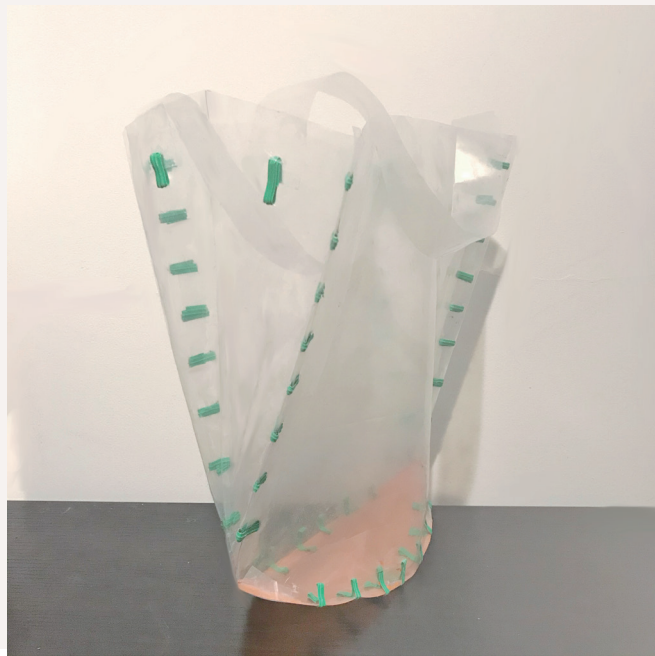
WASHING

BAG DESIGN

Iteration

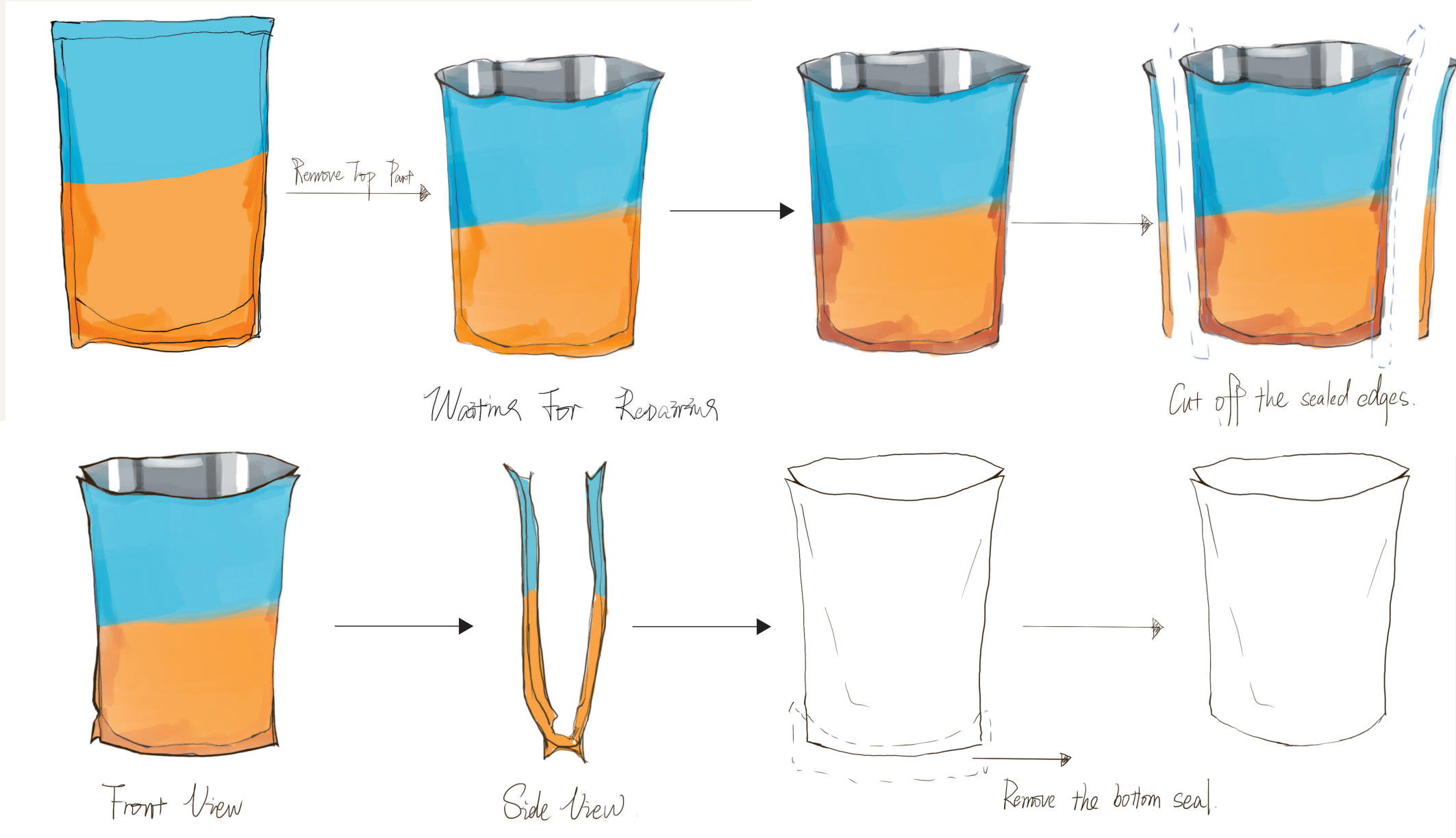


Photos



Process Diagram

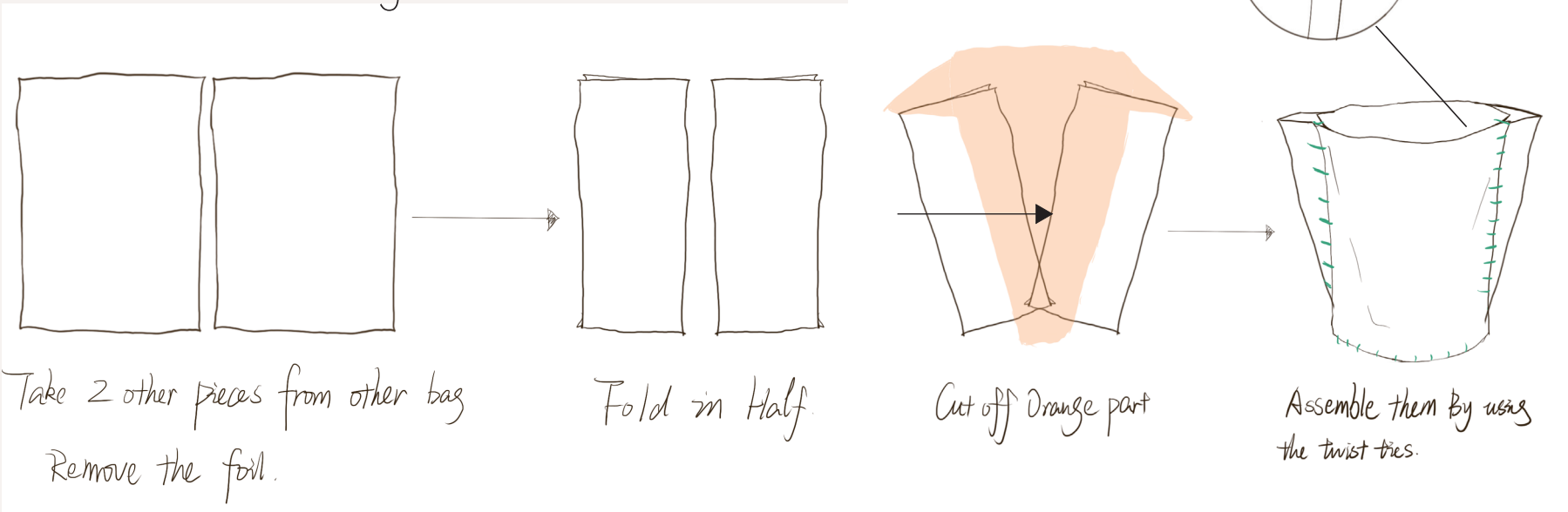
When the bag was not opened, all sides are sealed



Remove the foil on the plastic

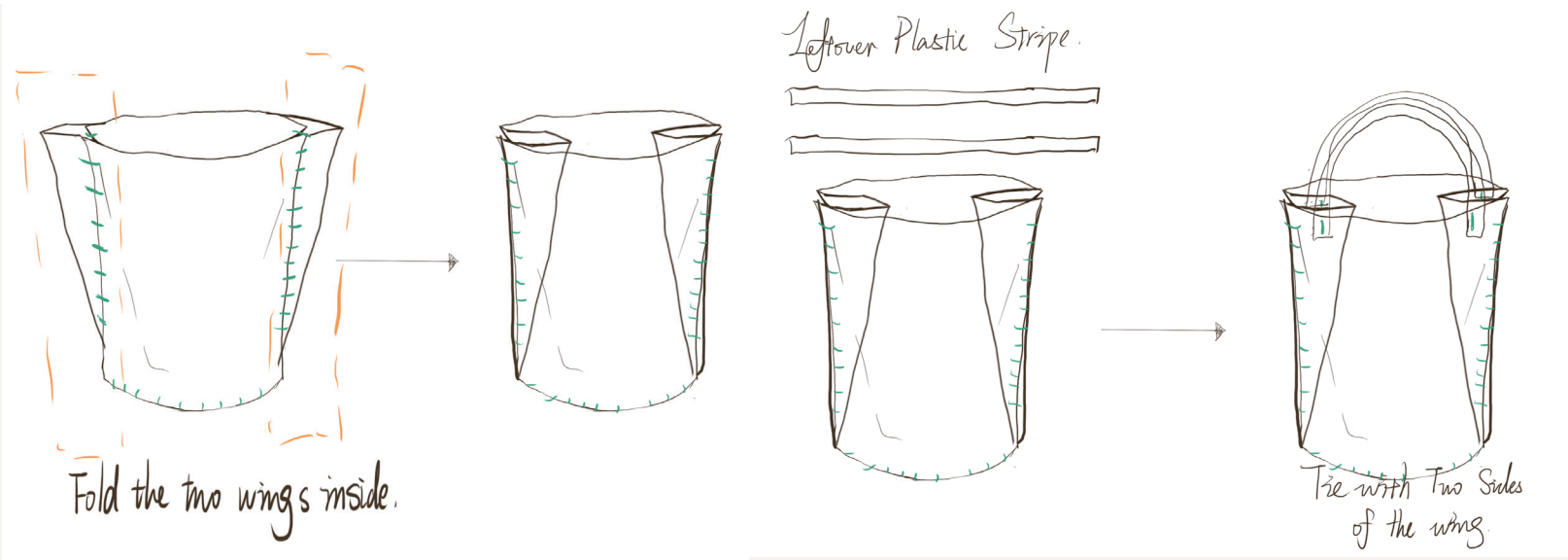
Process Diagram

Take two pieces from other bags



Cut Off the orange part, Fill the gap with the two pieces.

Use the twist tie to connect the two pieces



Tie the Stripe with the Twist Tie

Fold the two sides into the bag

An architectural rendering of a two-story brick building with a green roof. The building features several large, arched windows with black frames. In the foreground, a paved plaza is populated with various people, including a person pushing a stroller, a person sitting on a bench, and others walking. There are some plants and a small tree in the foreground. The overall style is a soft, painterly architectural illustration.

Site Research

Group member: Amanda East, Qianrong Fu, Jingzhe Gao, Seung Lee, Jingyi Liu, Kelli McGrath, Audrey Robinson, Cindy Wu, Leo Yang

Community Needs

Imagine a Community Center in the Park!

The Sara D. Roosevelt Park Coalition is working to transform the building in the park at Stanton St. into a community facility. If your community center could be anything, how would you want it to look and feel, what services or programs does our neighborhood need? Tell us what you envision by completing the following phrases:

The neighborhood needs a place to...

Swim! ^{Swim!} ^{Badminton}
have a community center
youth center ^{ping pong}
early childhood, youth, adult learning
Coffee House + seniors center.
housing! planning center for housing
green house
grow veggies!
make art
green house + 1
International Film Center
Community Center
roof garden, bathroom
Kids center
Community Center
Need more dist space
a fountain w/plants around it.

doggie daycare
port table
ping pong for youth
activities for youth!
Badminton Courts
Yoga

This building should have...

bathrooms open to the public ^{bathrooms}
Swimming pool ^{Green Stuff}
public bathroom ^(shower)
Security office/post ^{public education}
Ping pong for kids after school ^{PLAY Room}
roof garden
No parking inside the park! not allowed!
People should be able to enjoy the community!
Bathrooms ^{community room}
community activities ^(to rent or sign up for use)
ping pong, chess, ^{green roof}
kid/adult education programs ^{Green House}
Activities for children:
Swimming pool/garden/greenhouse/art center
bathrooms youth center
Restrooms (public) ^{SAUNA}
bathrooms ^{library}
Meeting room

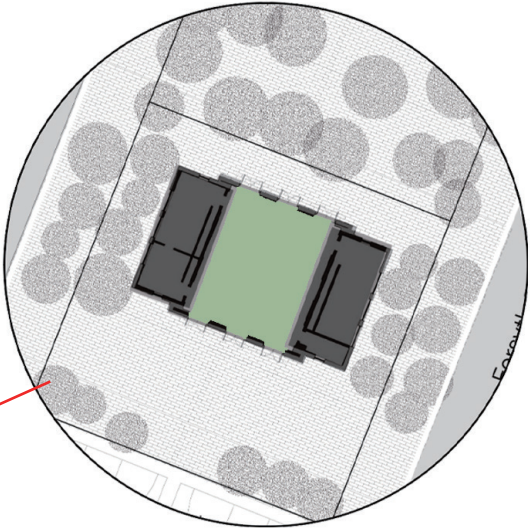
The community center can be for...

place for youth to learn sustainable "green jobs" ^{youth center}
a place for every generation to mingle ^{youth education or green skills}
to youth ^{learning center}
youth center ^{computers, bike repair}
sustainable/green living info center
green house ^{bring in high school to grow things}
youth center
CRAFT/ART SPACE - CERAMICS, art space
Zen center/greenhouse
youth/adult education
think tank & active workshop for community interventions & projects
A youth center! ^{Residents}

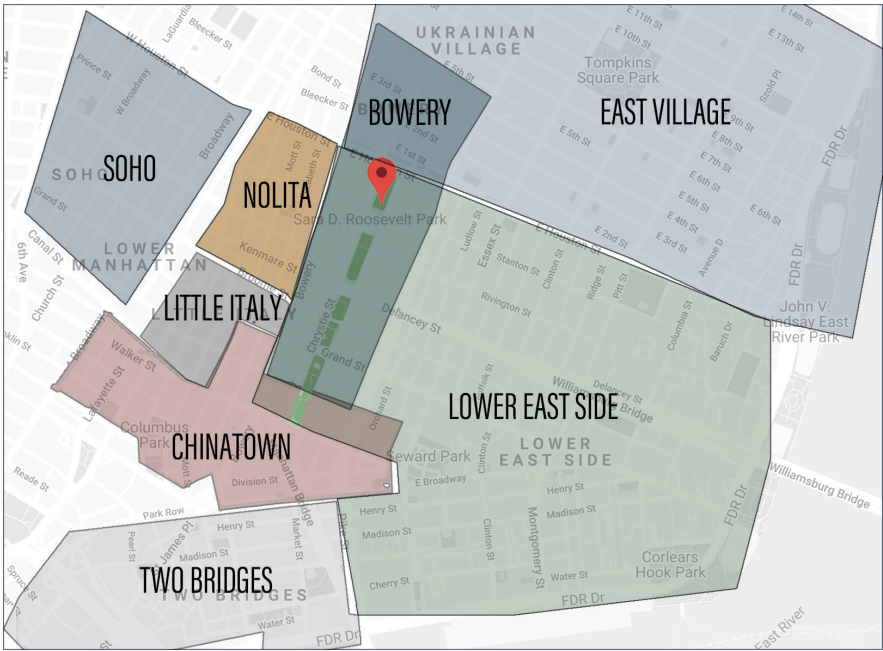
Site: Stanton Building



Surrounding Area



Neighborhood Context



Our site is located in the overlapped area between the lower east side and bowery. It is an area with a great mixture of different types of cultures, communities, and programs. It is easy to reach Chinatown, Little Italy, Nolita, Soho, Bowery, and East Village. It is surrounded by hotels, schools, university settlements, museums, and commercial areas.

Demographic (The demographic of the site is mostly White and Hispanic but as you move south of the site, the demographic becomes more Asian as you approach Chinatown which gives the site a unique mixture of culture. The most notable age that populate the surrounding area is mostly young children or elders. Although the surrounding site is a melting pot of different cultures and ages, they can all agree on the programs needed in the community. According to the community, the neighborhood needs a community center, a center for housing help, a greenhouse, a sports center, and a swimming pool. The building should have public bathrooms, public education/after school, library, meeting rooms, and a place for community activities.



Education, Museum, University Settlement



An architectural rendering of a courtyard space. The scene features a red brick wall with several arched openings. In the foreground, a person is sitting on a bench, and another person is walking. To the right, there is a small table with plants and a cart. The background shows a paved area and more arches. The overall atmosphere is bright and open.

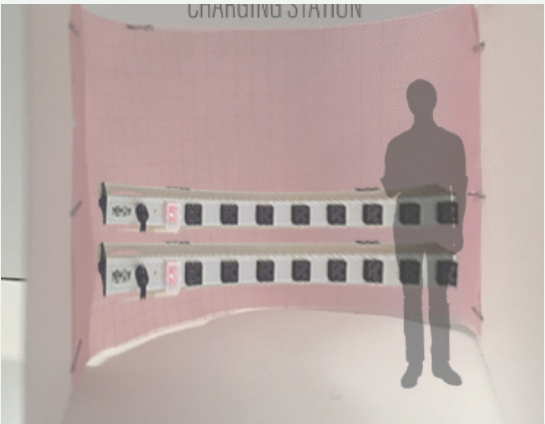
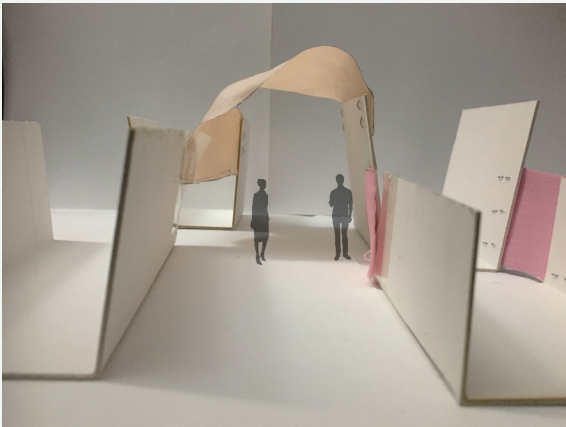
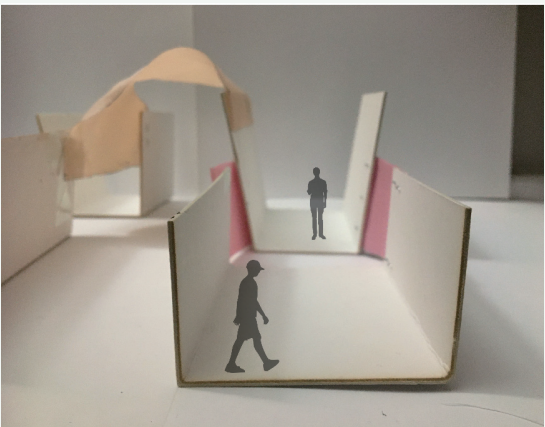
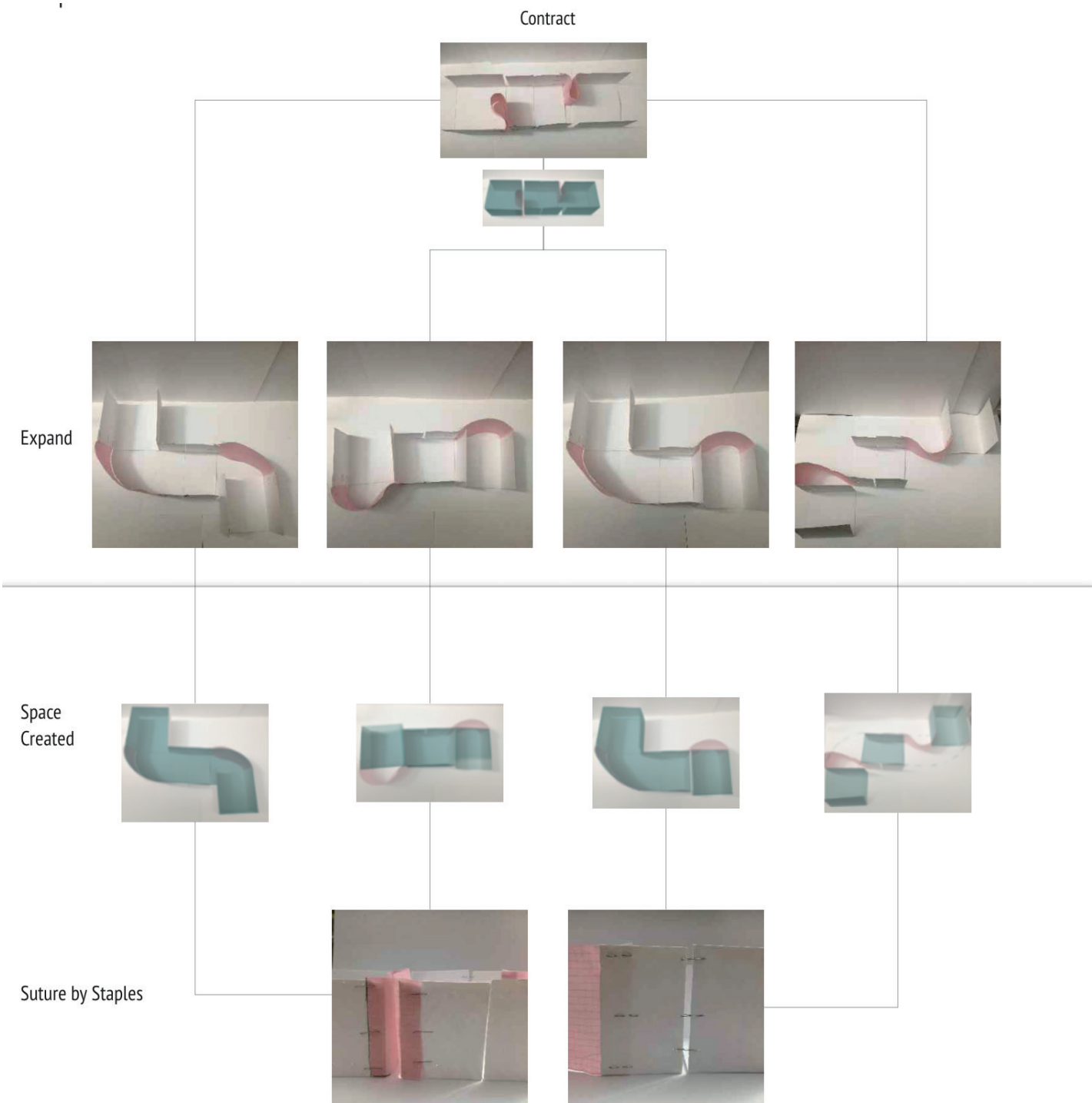
Suture the Green Space

Group member:

Concept Statement

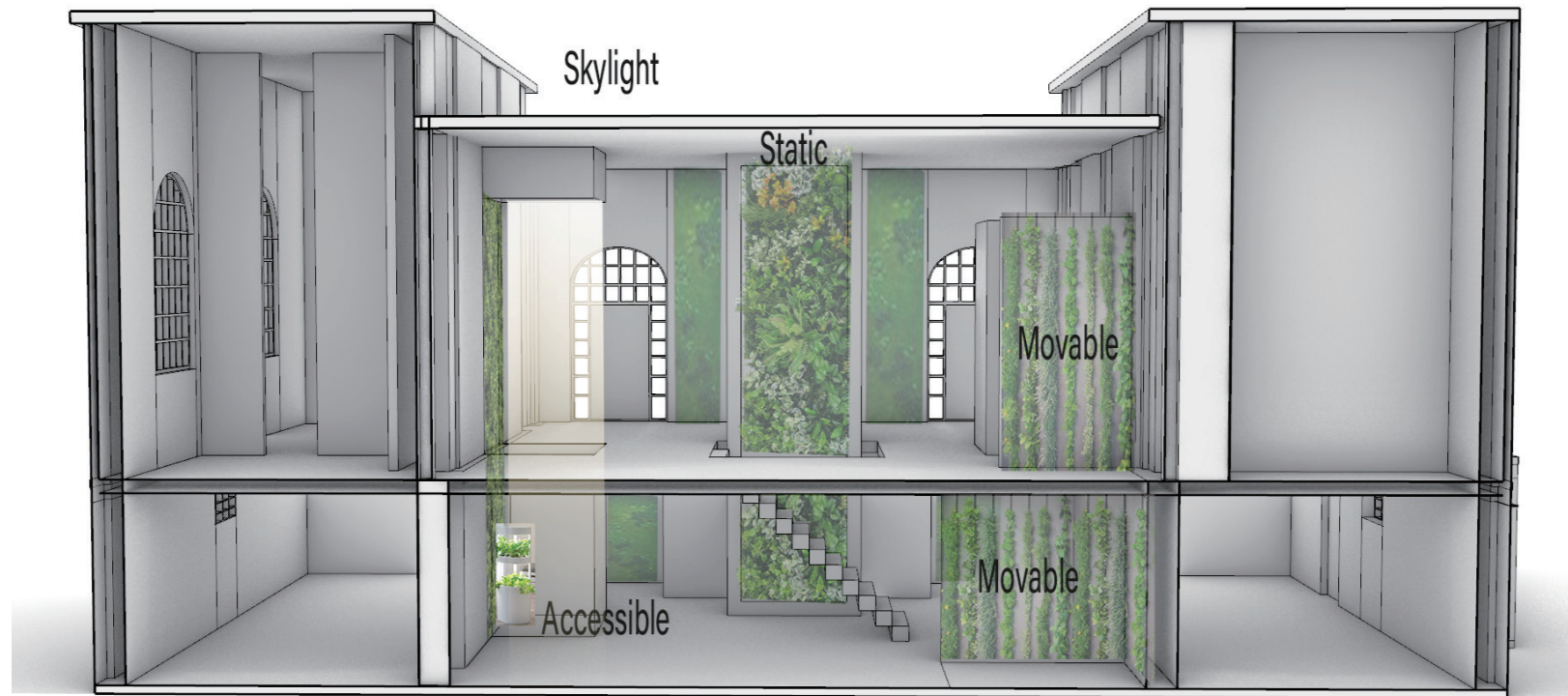
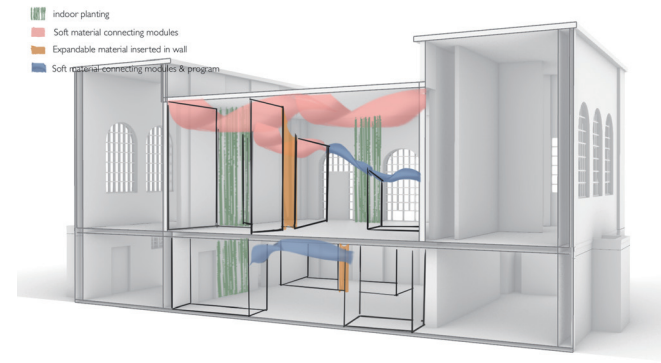
This proposal is about reactivating the Stanton Building as a tool-sharing resource and teaching tool as an interior community garden. Although there is already a community garden nearby, the garden in Stanton building provides a more protected environment for the plants, some of which are edible and can be used year-round. This provides the opportunity to teach the community members about plants that can be grown inside the building, and create a stronger connection between the interior of the building and the surrounding park. The garden can be moved around the building interior on moveable tools-carrying planting carts but also to extend gardening activities not to the exterior of the building. Community members could move the plants and tools with the carts as needed. My repair project revealed concepts about expansion, flexibility, and connection which informed the design proposal for enhancing the connections between interior and exterior. The design provides an opportunity to connect with the environment, to learn about growing plants, and to provide opportunities for community members to connect through these activities.

Concept Model



This concept model was inspired from the repair project. I took the idea of expansion, flexibility and connectivity of the bag that I made, and use the fabric and paper model to explore how the programs can be flexible in the space.

Concept Model Iteration



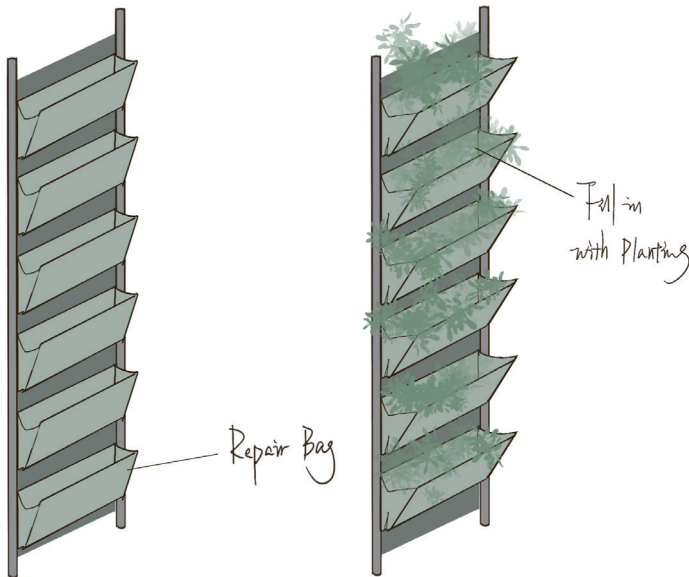
I decided to use the planting as a tool of connecting the space vertically, and it is also an natural element in the space, which is an expansion of the outdoor park planting



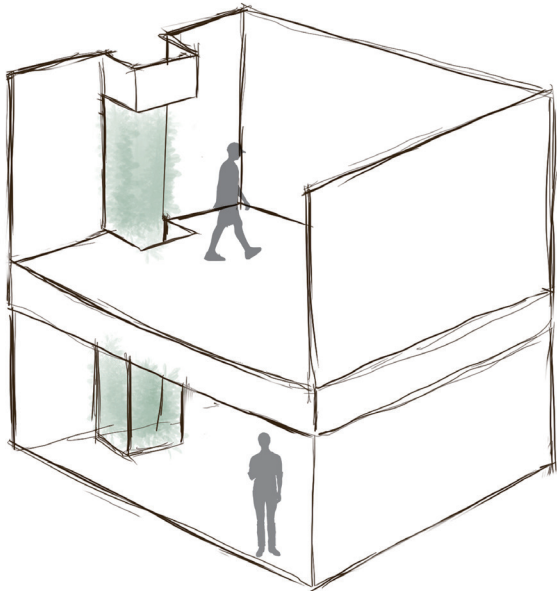
Planting in the Space



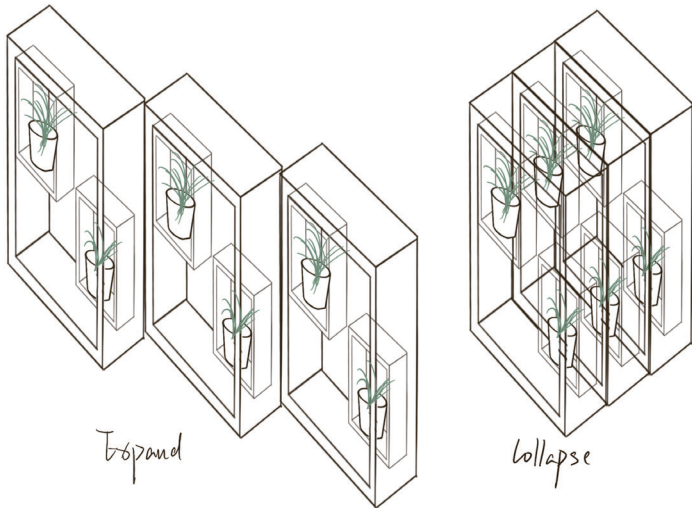
Planting Along Guardrail



Planting Bags on Wall



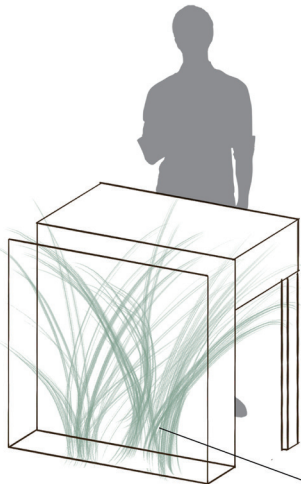
Vertical Garden



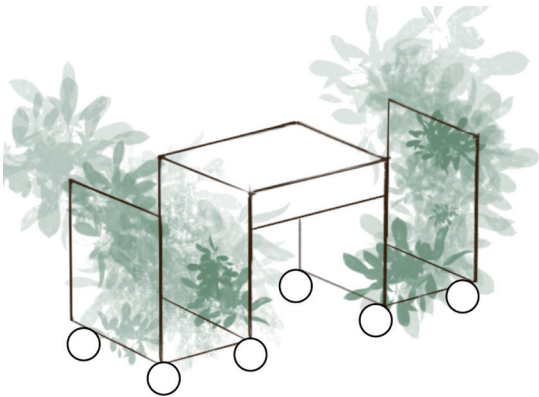
Flexible Shelf Partition



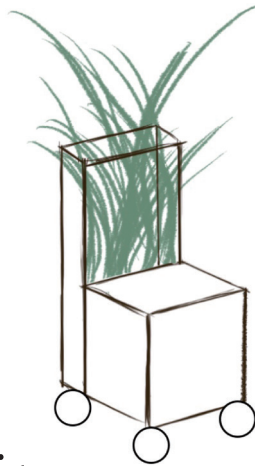
Planting & Tool Carts



Information Desk



Movable Planting Chair



Plant Types : For Vertical Garden



Philodendron

Having bright green, heart shaped leaves, philodendron is a fast growing, dependable climbing plant that grows nearly anywhere with very little attention. If you're a beginner when it comes to houseplants for growing vertically, this is a fantastic choice.



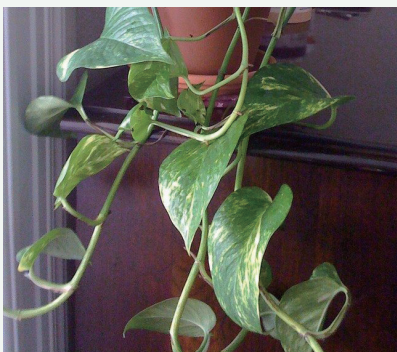
Air Plants

They are fun little plants available in hundreds of interesting species. Air plants thrive in bright, indirect light. They absorb moisture and nutrients not through roots, but through their leaves. Just soak the plants in room temperature water every couple of weeks, depending on humidity levels in your home. No other care is needed.



Hedera Helix Ivy

Hedera helix is an evergreen climbing plant, growing to 20–30 m (66–98 ft) high where suitable surfaces (trees, cliffs, walls) are available, and also growing as groundcover where no vertical surfaces occur. It climbs by means of aerial rootlets with matted pads which cling strongly to the substrate.



Pothos

They are fun little plants available in hundreds of interesting species. Air plants thrive in bright, indirect light. They absorb moisture and nutrients not through roots, but through their leaves. Just soak the plants in room temperature water every couple of weeks, depending on humidity levels in your home. No other care is needed.



Cissus Verticillata / Seasonvine

Cissus verticillata (Seasonvine) is a species of shrub in the family Vitaceae. It is a climber. It is native to Puerto Rico.



Lipstick Plant

Lipstick plant is a cascading plant with shiny green leaves and red, lipstick shaped blooms that show up throughout the year. This hardy plant, one of the best plants for an indoor wall, tolerates low light and dry conditions like a champ. Let it trail or train it to climb up a support.



Baby's Tear

The unusual appearance of the bromeliad would seem to indicate that the plant is high maintenance and requires special gardening skills. The plant is prized for its thick foliage that grows in a natural rosette. The wide leaves are sword shaped or scoop-like and grow around a central "cup." This cup catches water in the plant's habitat.



Bromeliad

The unusual appearance of the bromeliad would seem to indicate that the plant is high maintenance and requires special gardening skills. The plant is prized for its thick foliage that grows in a natural rosette. The wide leaves are sword shaped or scoop-like and grow around a central "cup." This cup catches water in the plant's habitat.

Plant Types : Potted Plants & Herb



Mint

Mint is a genus of plants in the family Lamiaceae (mint family). The exact distinction between species is unclear; it is estimated that 13 to 24 species exist. Hybridization occurs naturally where some species range overlap.



Purslane

Purslane (*Portulaca oleracea*) is an herb that is native to Asia, but has spread all across the world. It is commonly found in cleared areas. The purslane herb has red stems and fleshy, green leaves. The flowers are a bright yellow.



Lemon Balm

Lemon balm as a houseplant is a fabulous idea because this lovely herb offers a beautiful lemony aroma, a tasty addition to foods and drinks, and a pretty potted plant for a sunny window ledge. Knowing what this herb needs will allow you to grow it indoors, year round.



Parsley

Parsley herbs (*Petroselinum crispum*) grow best in a sunny, preferably south-facing window where they will receive six to eight hours of direct sunlight every day. If your window doesn't provide that much light, you'll have to supplement it with fluorescent lighting. Turn the pot every three or four days so that the plant doesn't lean into the sun.



Basil

Growing basil indoors is easy. Container grown basil should be planted in well-drained, nutrient-rich soil. Using the proper soil type is important in order to successfully grow basil inside. As basil is not tolerant of water stress, make sure pots provide adequate drainage. While the soil should be kept somewhat moist, it should never be soggy; otherwise, the roots will be prone to rotting.



Sage

Sage is a perennial, evergreen subshrub, with woody stems, grayish leaves, and blue to purplish flowers. It is a member of the mint family Lamiaceae and native to the Mediterranean region, though it has been naturalized in many places throughout the world. It has a long history of medicinal and culinary use, and in modern times it has been used as an ornamental garden plant.



Chives

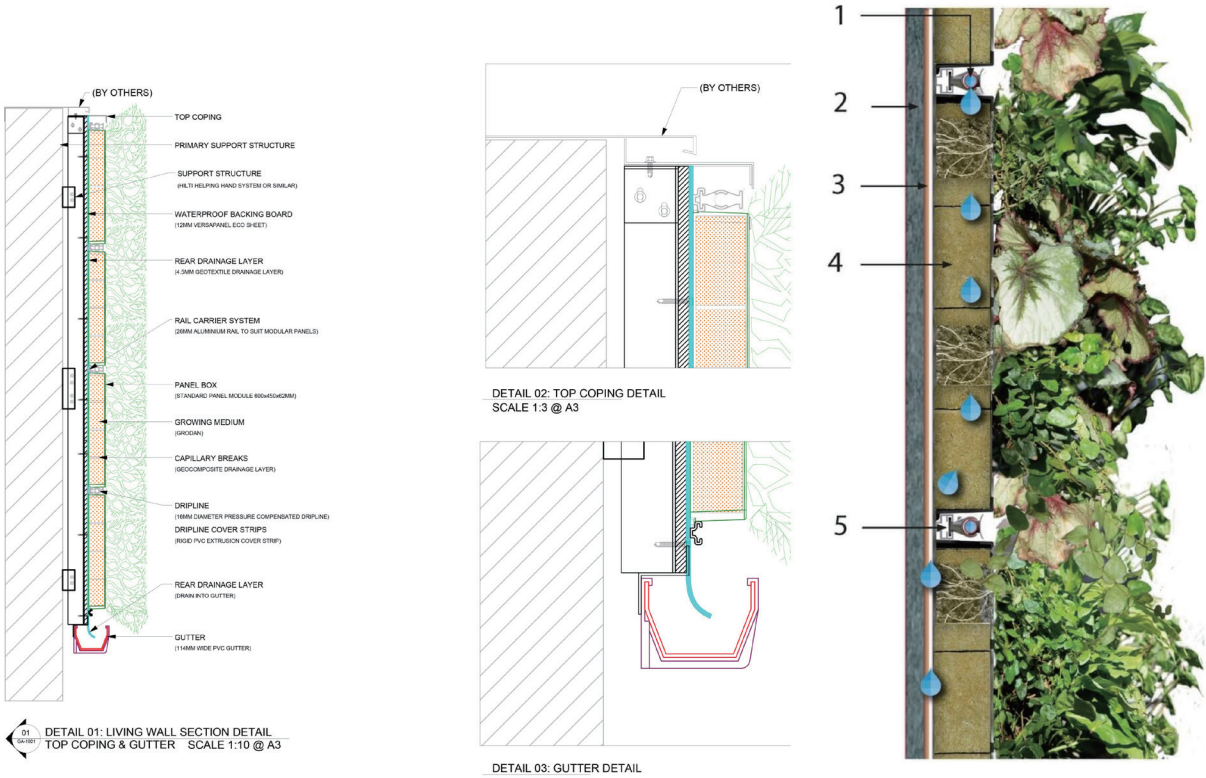
Chives growing indoors appreciate other growing pots close by to provide humidity as well as a fan for air circulation. Humidity for indoor chives may also be provided by nearby pebble trays filled with water or miniature water features nearby. Misting with a water bottle can also help prevent low humidity.



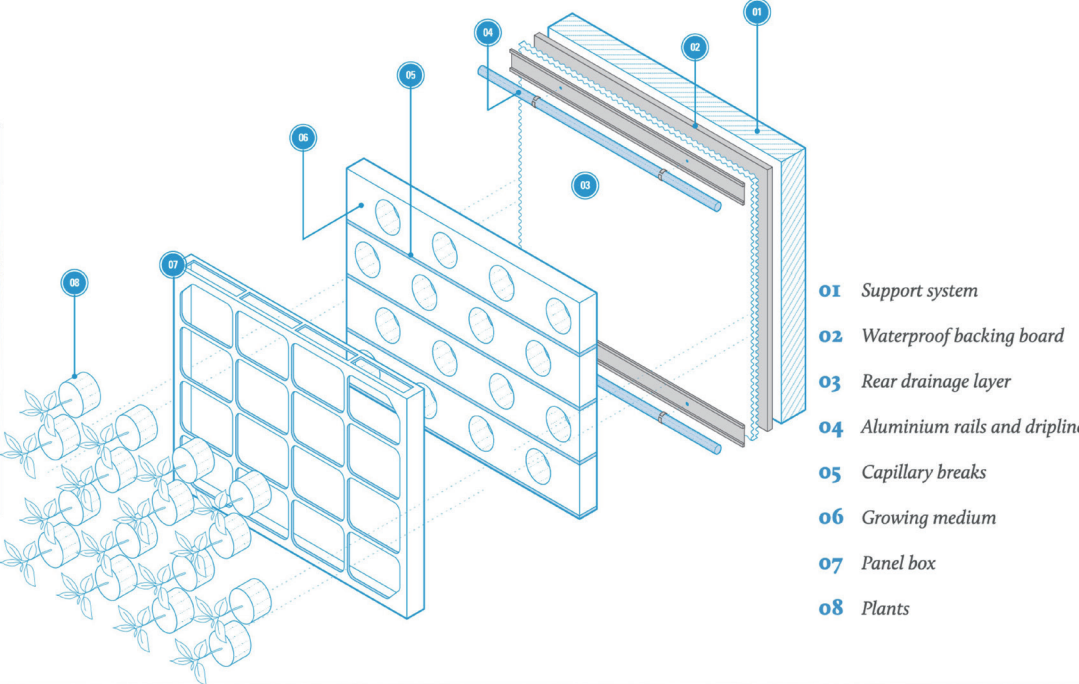
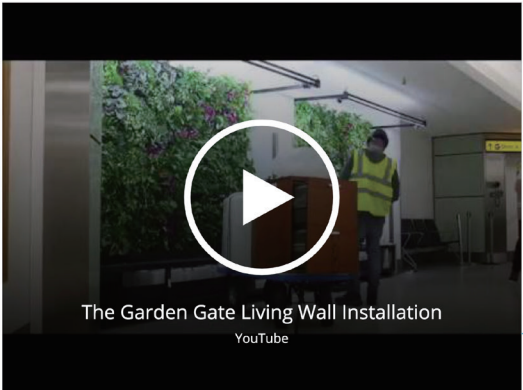
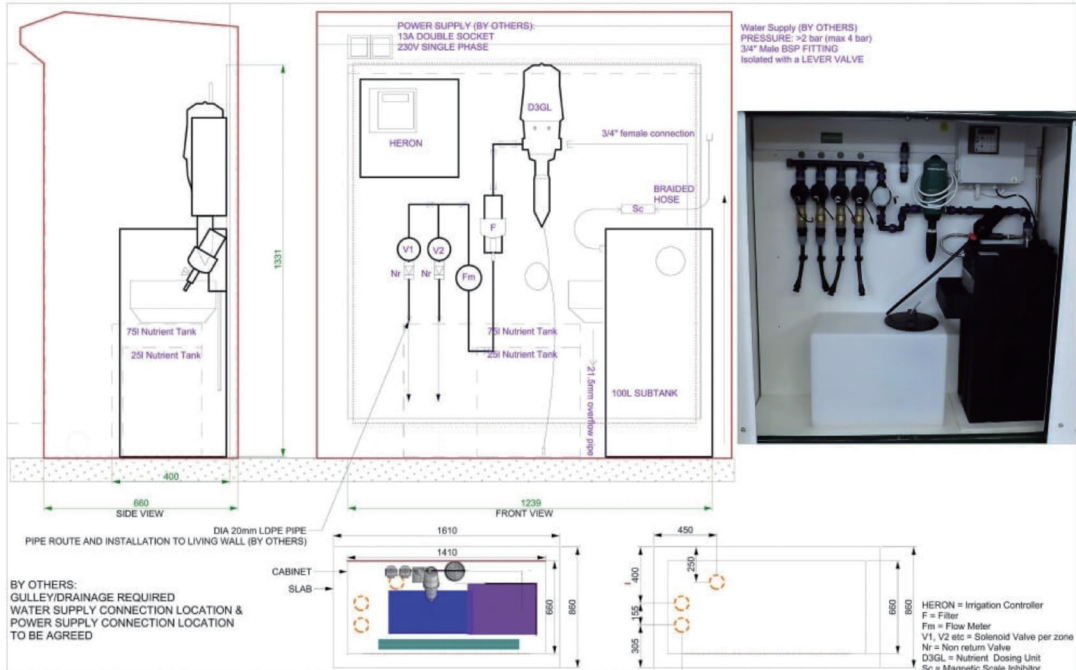
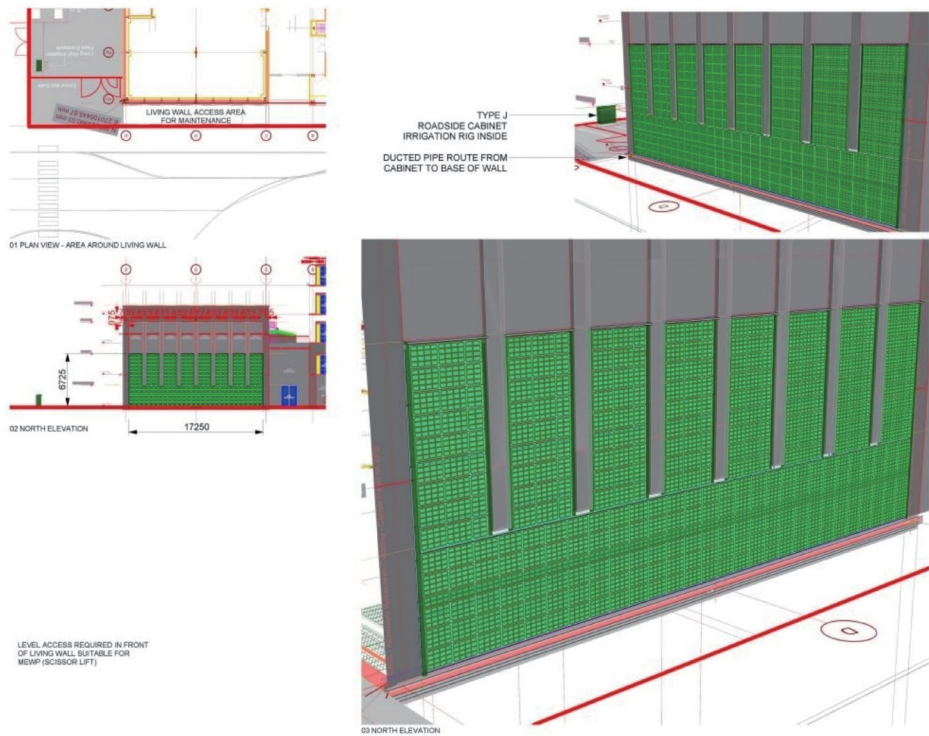
Cilantro

All parts of the plant are edible, but the fresh leaves and the dried seeds (as a spice) are the parts most traditionally used in cooking.

Assemblies & Irrigation



- 01 Pressure compensated Dripline
- 02 Waterproof Backing Board
- 03 Rear drainage layer
- 04 Growing medium
- 05 Rail carrier system, dripline and coverstrips



Model Iteration



In the model iteration, I explored more about how plant could be used in the space and connect the building vertically. The vertical circulation is dominating the main space. There are openings on the rooftop, which provides the space with enough natural lighting. However, a large portion of the floor area has been cut. In order to leave enough space for circulation, I did another stair study to explore how to free up the space



Stair Design Exploration

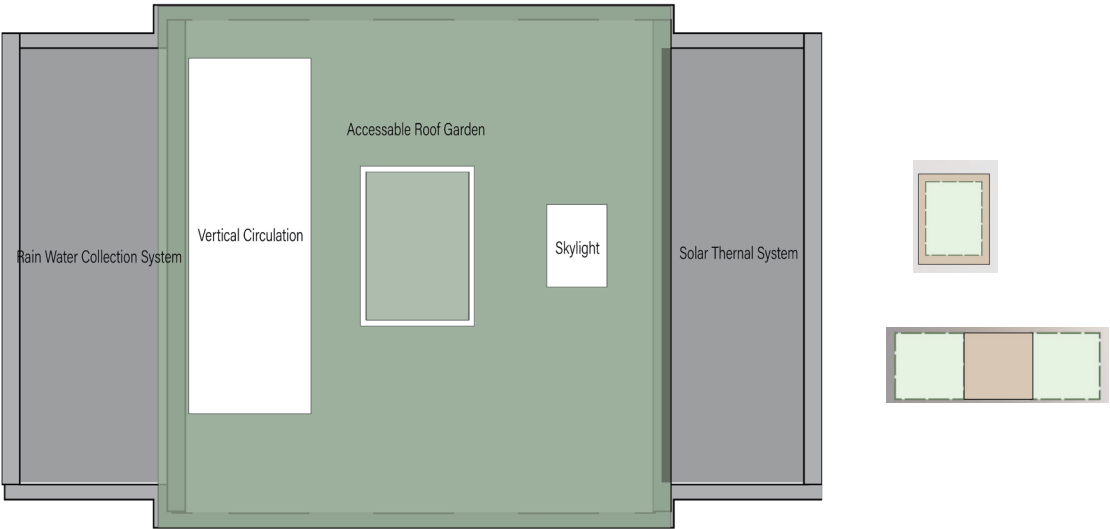


This stair study simplified the stair, and leave more space for the visual connection between north and south. Besides, I added the edible plants to grow on the guardrail, which people could have interaction with the plants in the space. I also enlarged the landing on the stair, and people can sit their and chatting. However, might block the circulation. In the next several weeks, I decided to push the stairs to the left side, combined it with the vertical planting on the wall.



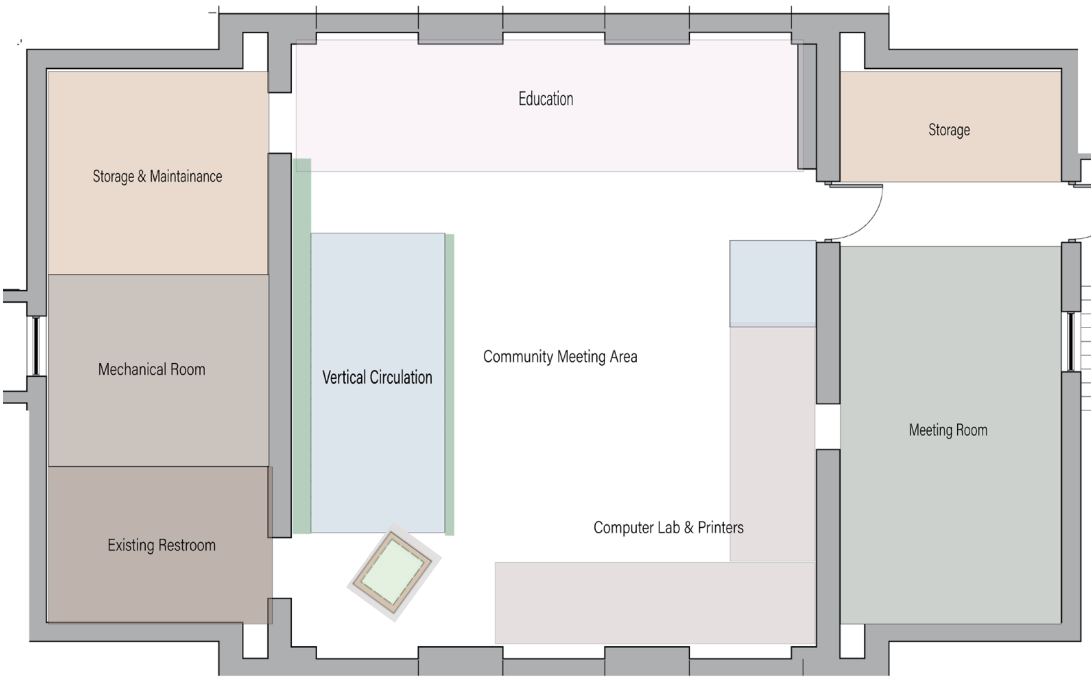
Program Diagram

The vertical garden and stair are combined together and located at the left side of main space, the information desk and the elevator are located at the right side of the main space. On the first floor, the right wing are staff office, homeless outreach center, and the tool shed. The left the building has emergency supplies and existing restroom. The cellar has educational area, printers and computer labs. The maintainence and storagee are located at the left wing of the cellar, the right wing are designed for people to have meeting rooms.

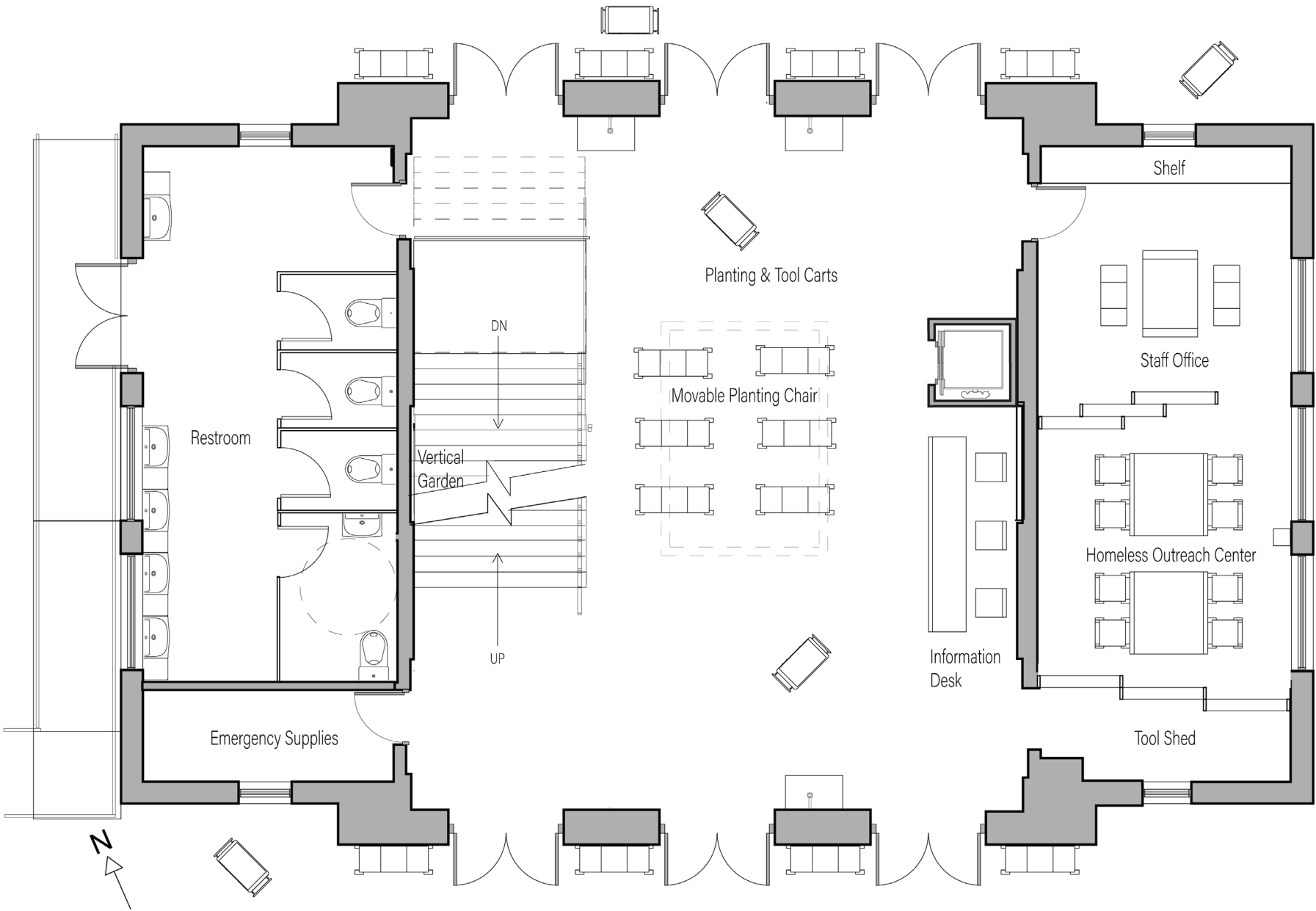


Planting & Tool Carts

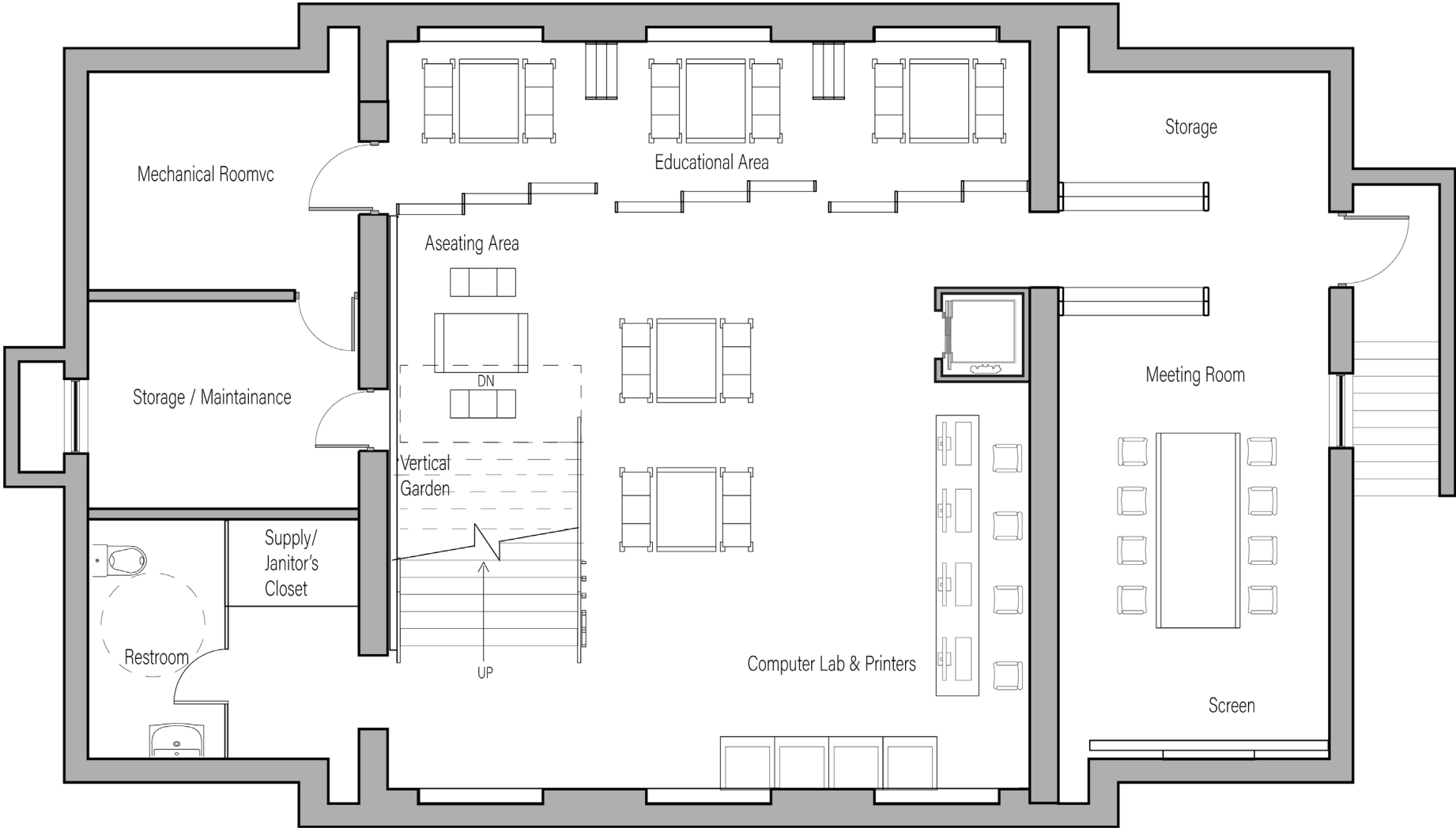
Movable Planting Chair



First Floor Plan



Cellar Floor Plan





Section

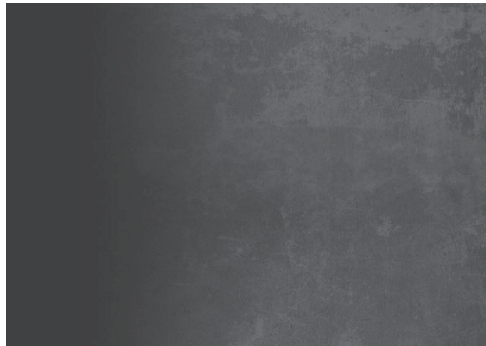


Section

Material & Lighting



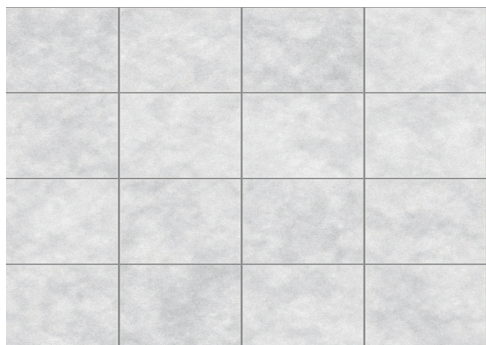
Reclaimed Wood



Stone



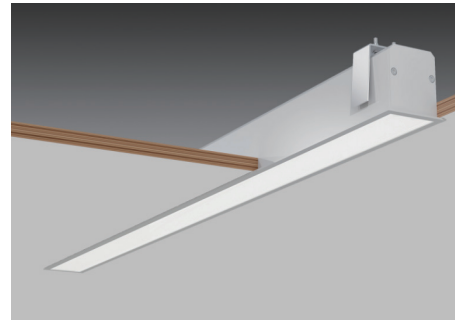
Glass



Stone Tile



Recessed Round Light



Recessed Linear Light



Cove light



Plant Growing Light







