

Yoonah Choi
Pratt Institute
2021







Belarus is one of Eastern European country, located between Poland and the border of Russia. It's often called as "White Russia" since people who are living Belarus can speak both Belarusian and Russian.

Food has strong symbolic meaning in Belarus. Belarus potatoes are known as the second bread. Most popular daily meals in Belarus are red meat, potatoes, and soup called Borscht: a soup made with beets with sour cream.



Blooming

is a set of tableware which was designed for the traditional Belarusian food and culture



Draniki: a hot potato pancake that was served with fresh homemade sour cream.

Borscht: a sour soup made of beetroot as the main ingredient and meat, potatoes, cabbage, carrots and onions.



Kompot: a non-alcoholic sweet beverage that may be served hot or cold, depending on tradition and season.

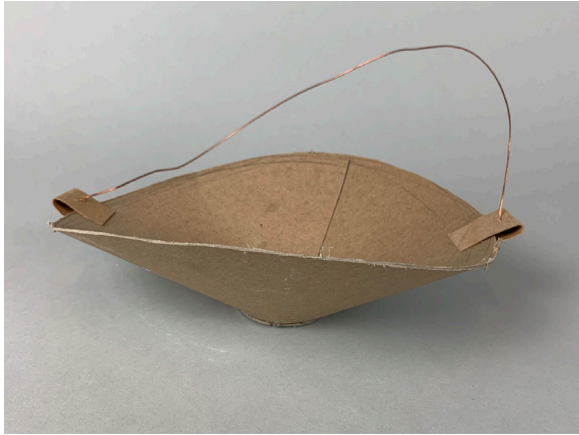


Nalisniki: Belarusian crepe-like pancakes filled with various fruit or sweet fillings such as kulaga or curd cheese.



Zephyr: a homemade sweet similar to a marshmallow



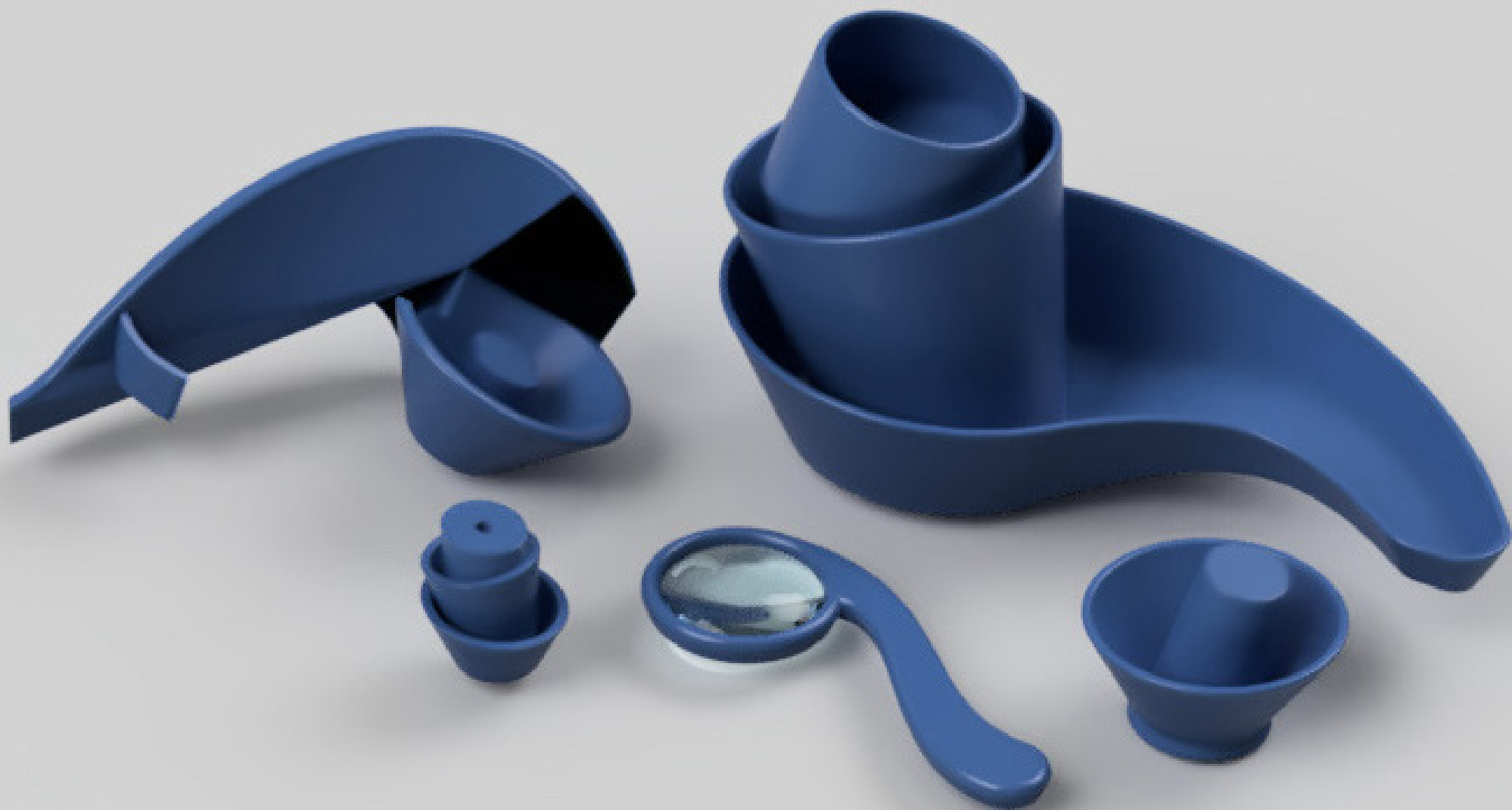








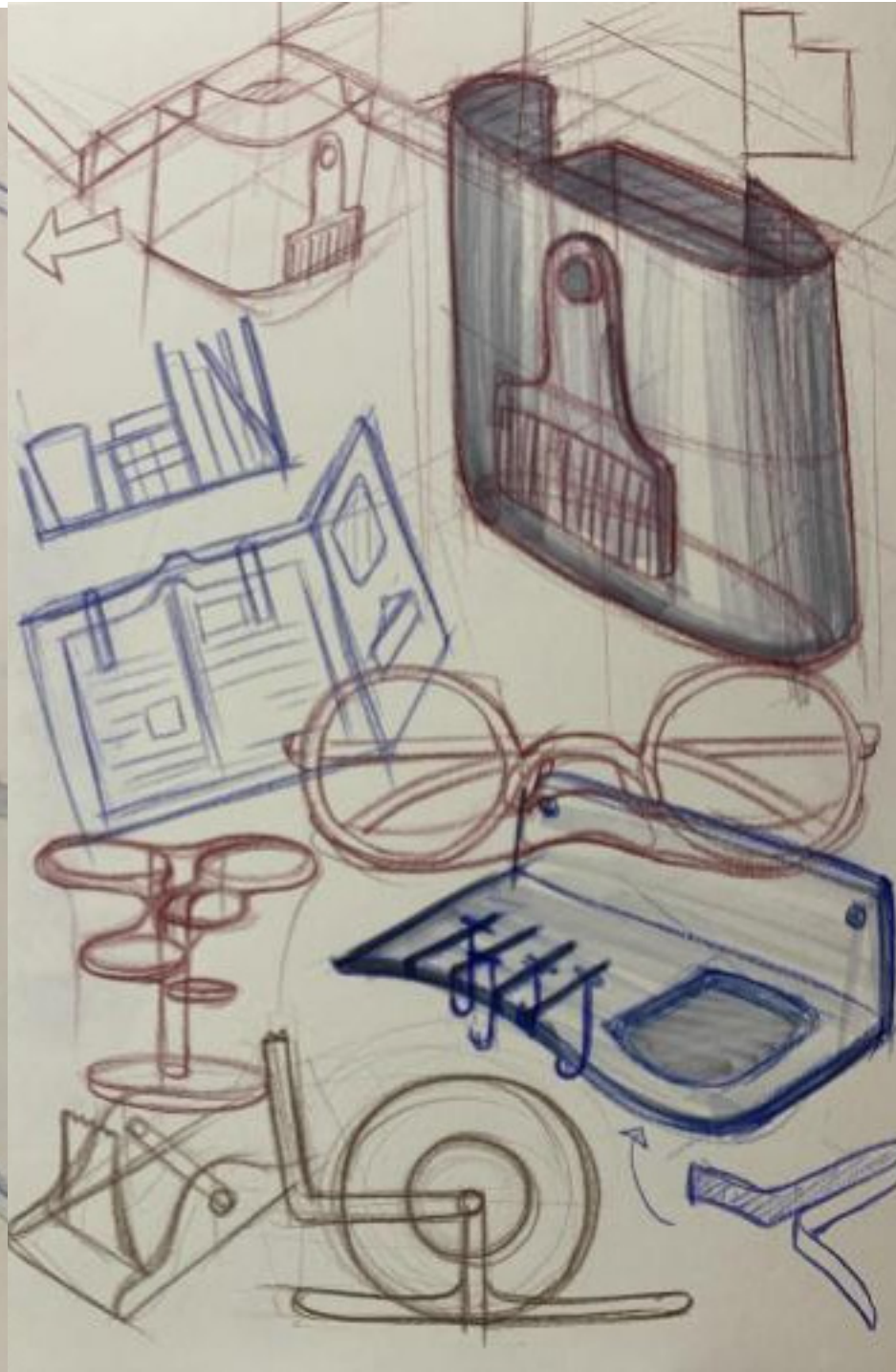
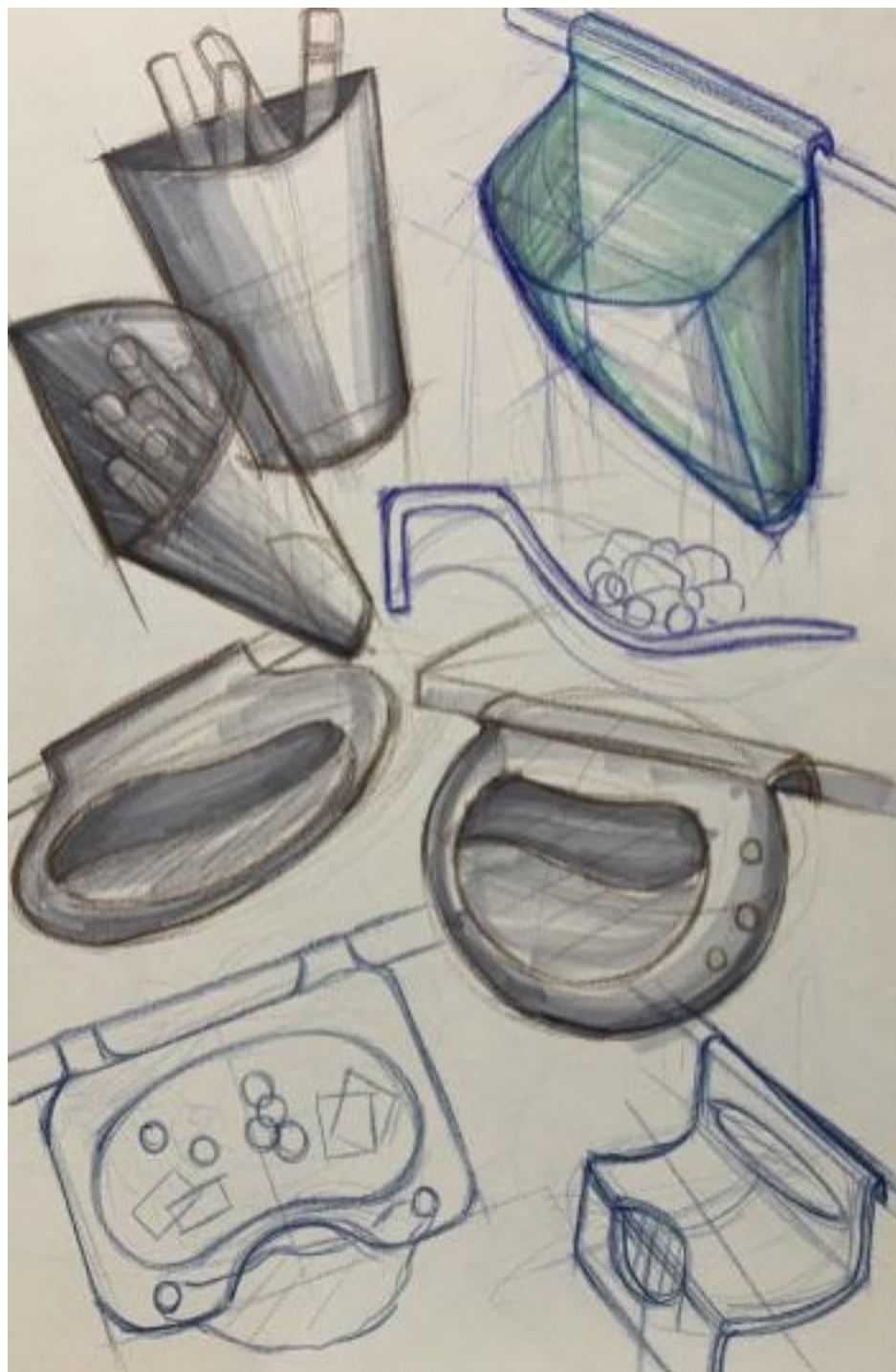


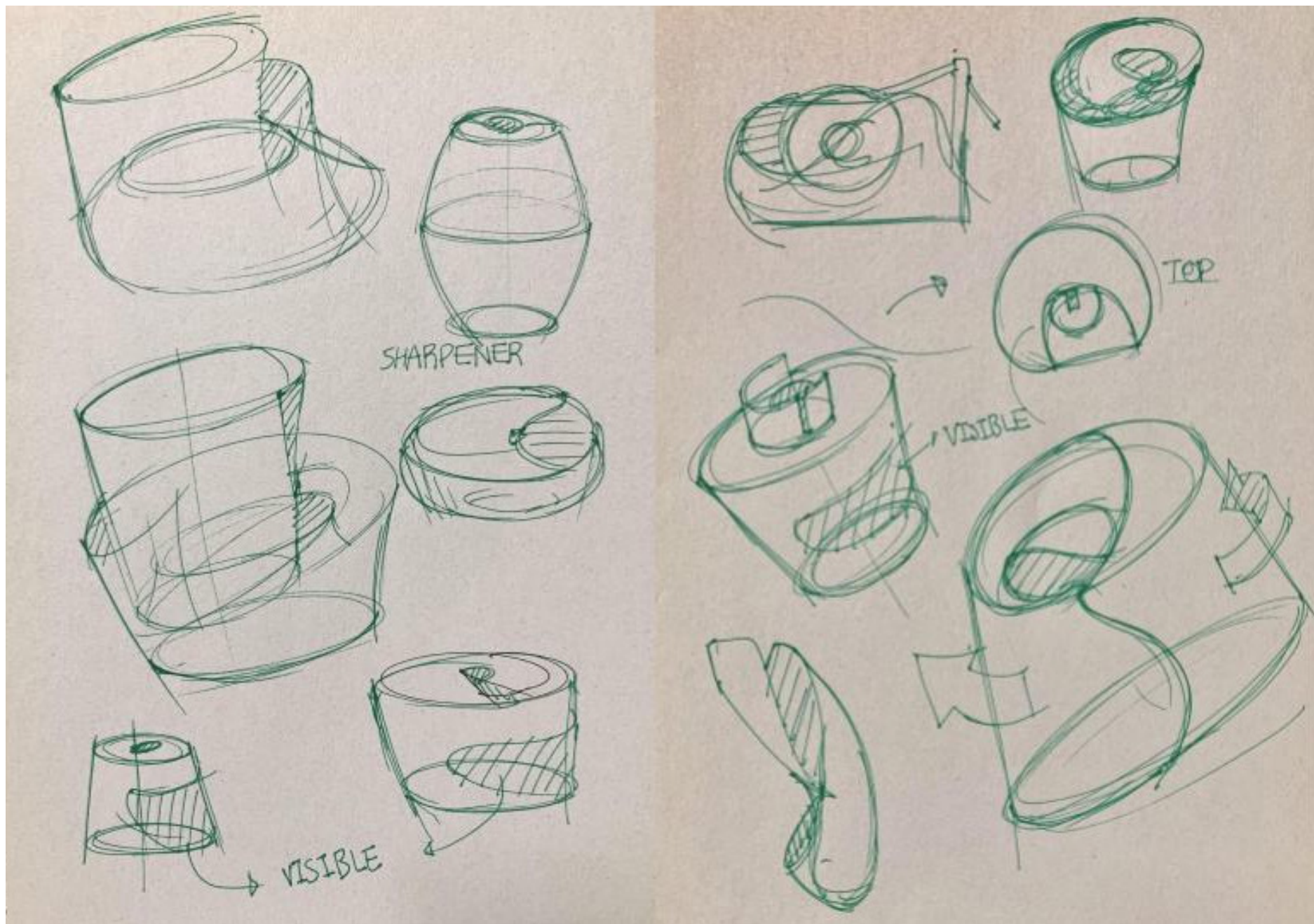


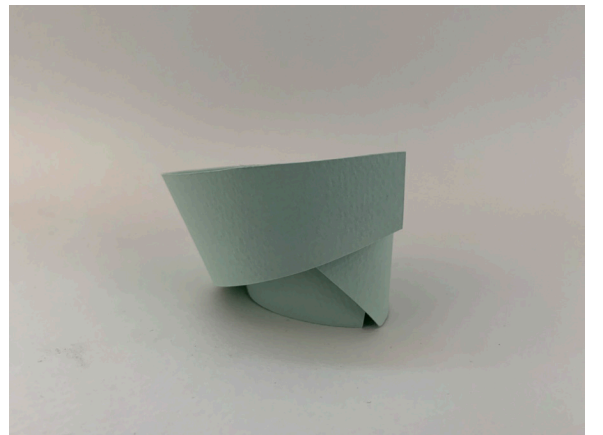
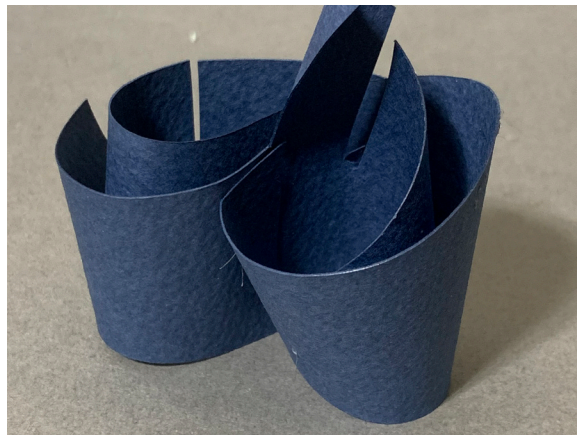
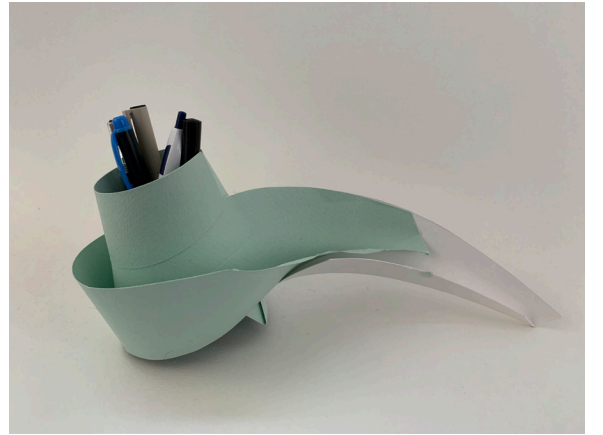
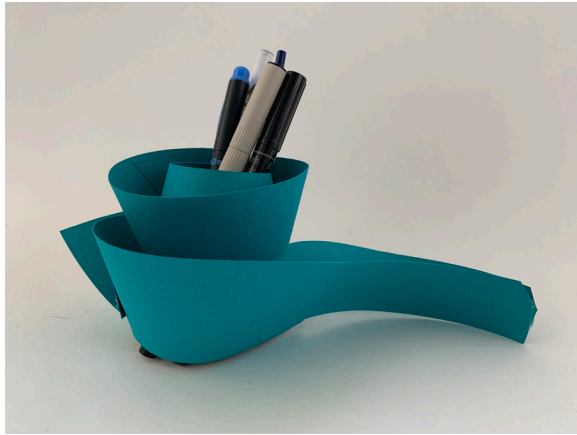
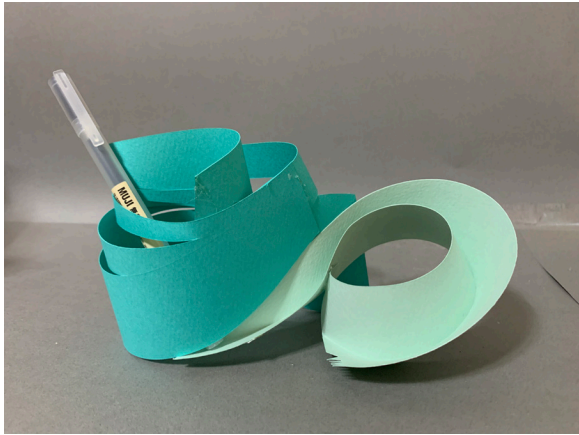
Rescence: Desk Environment

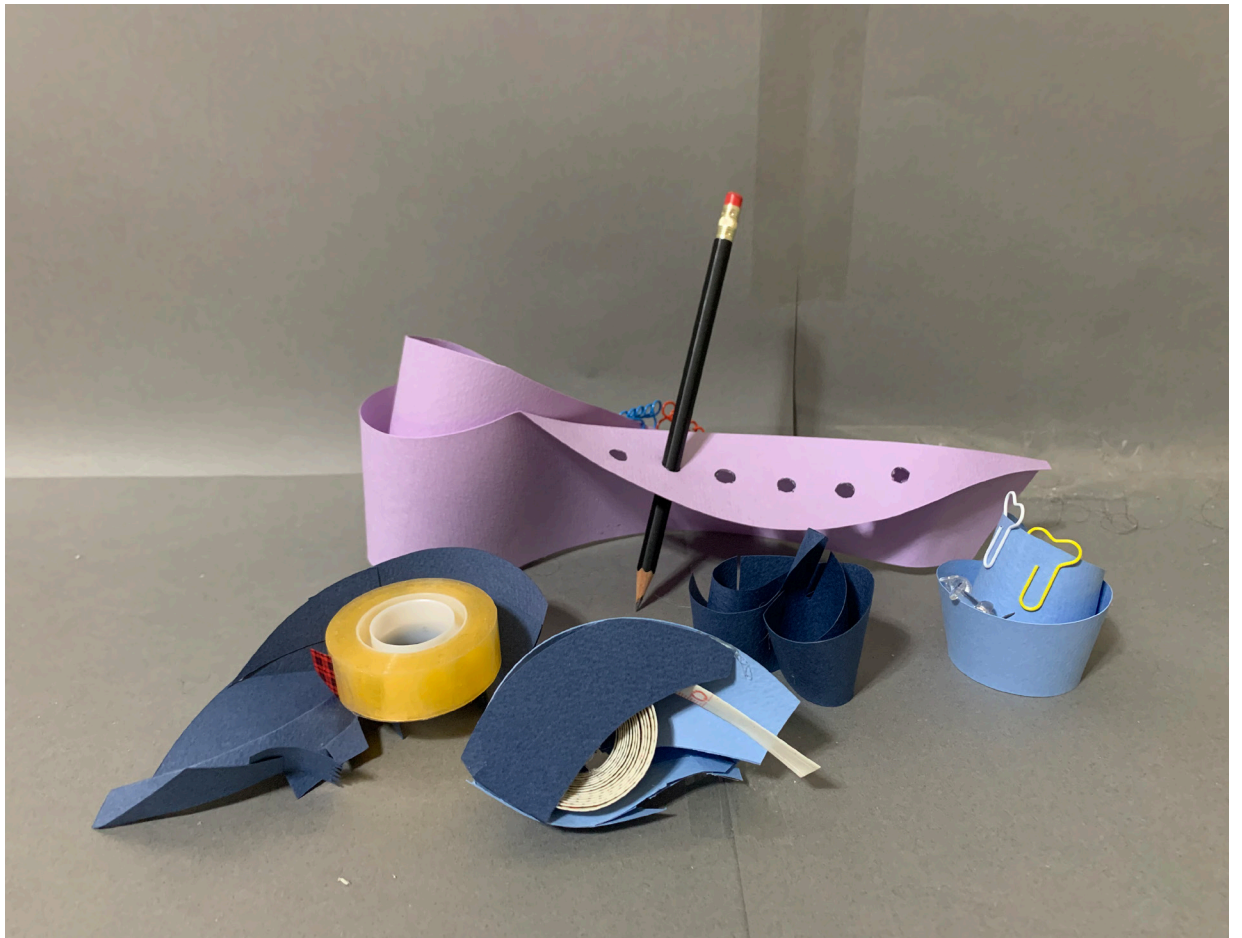
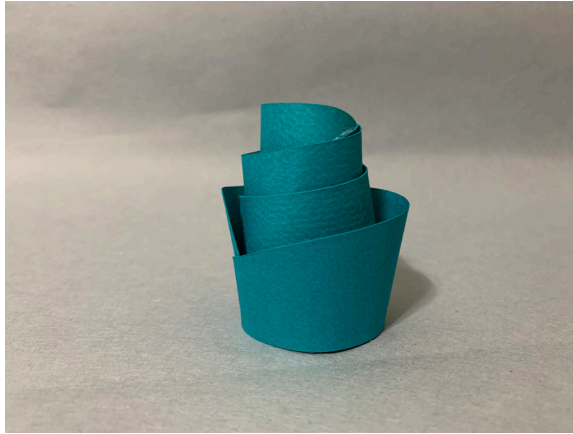


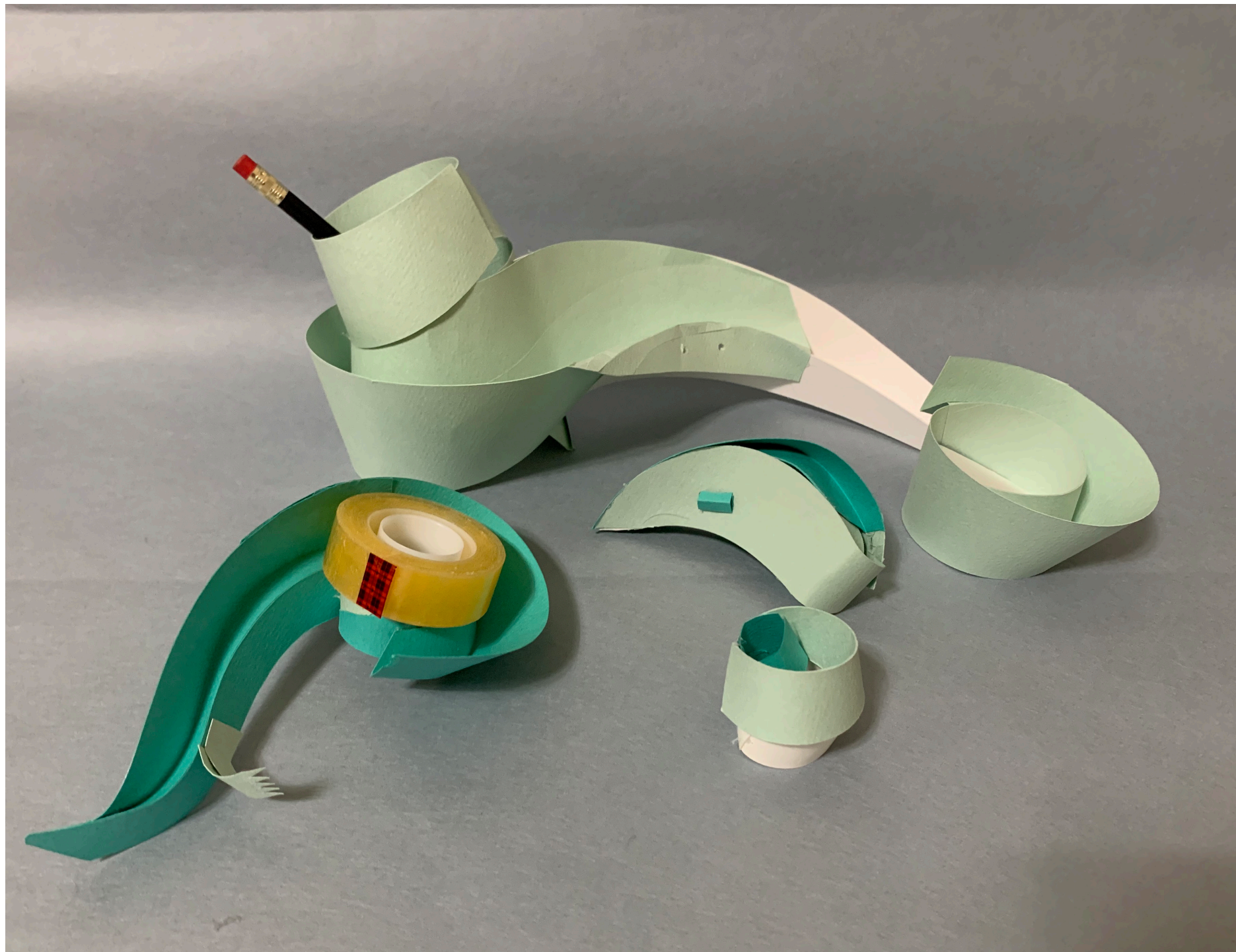


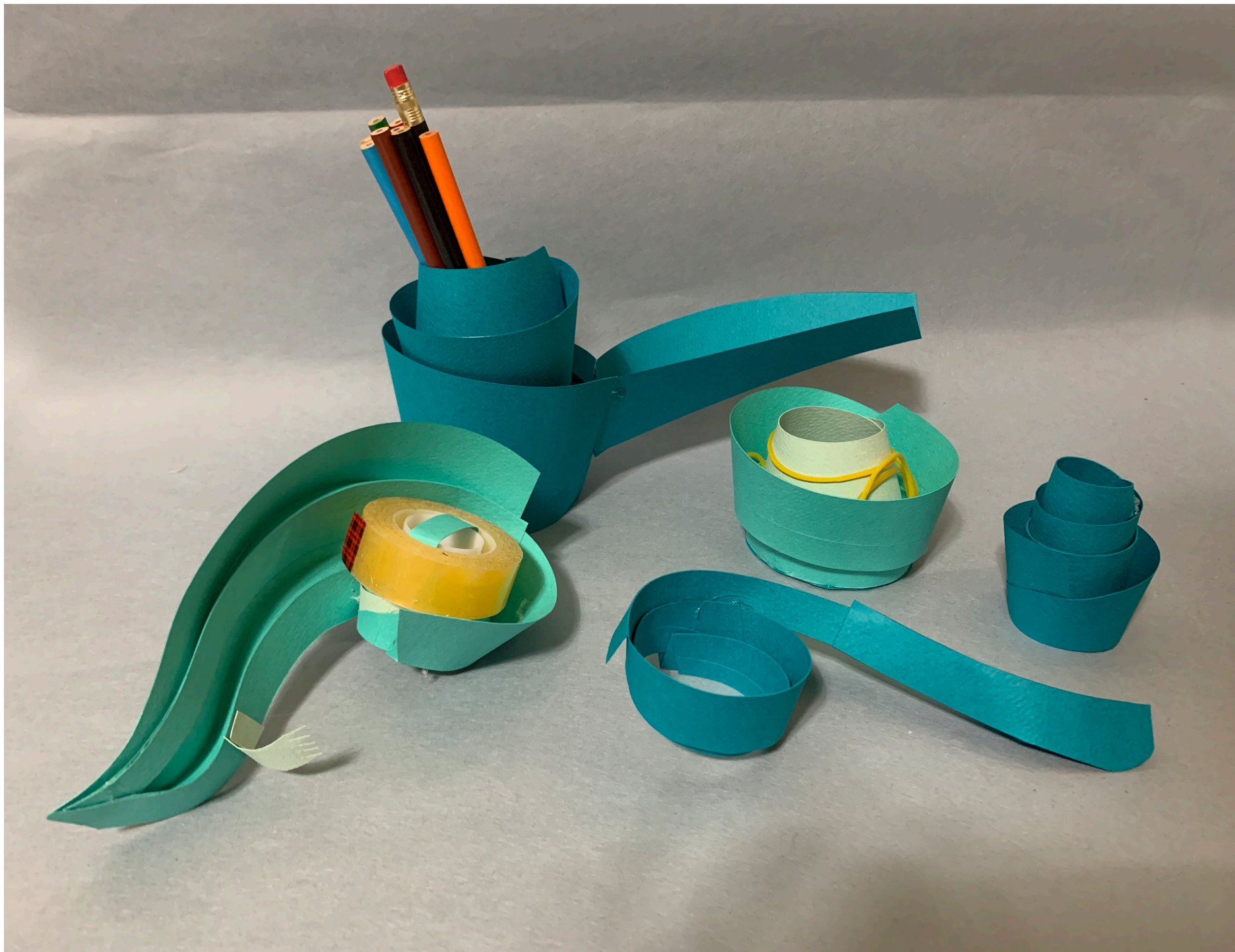


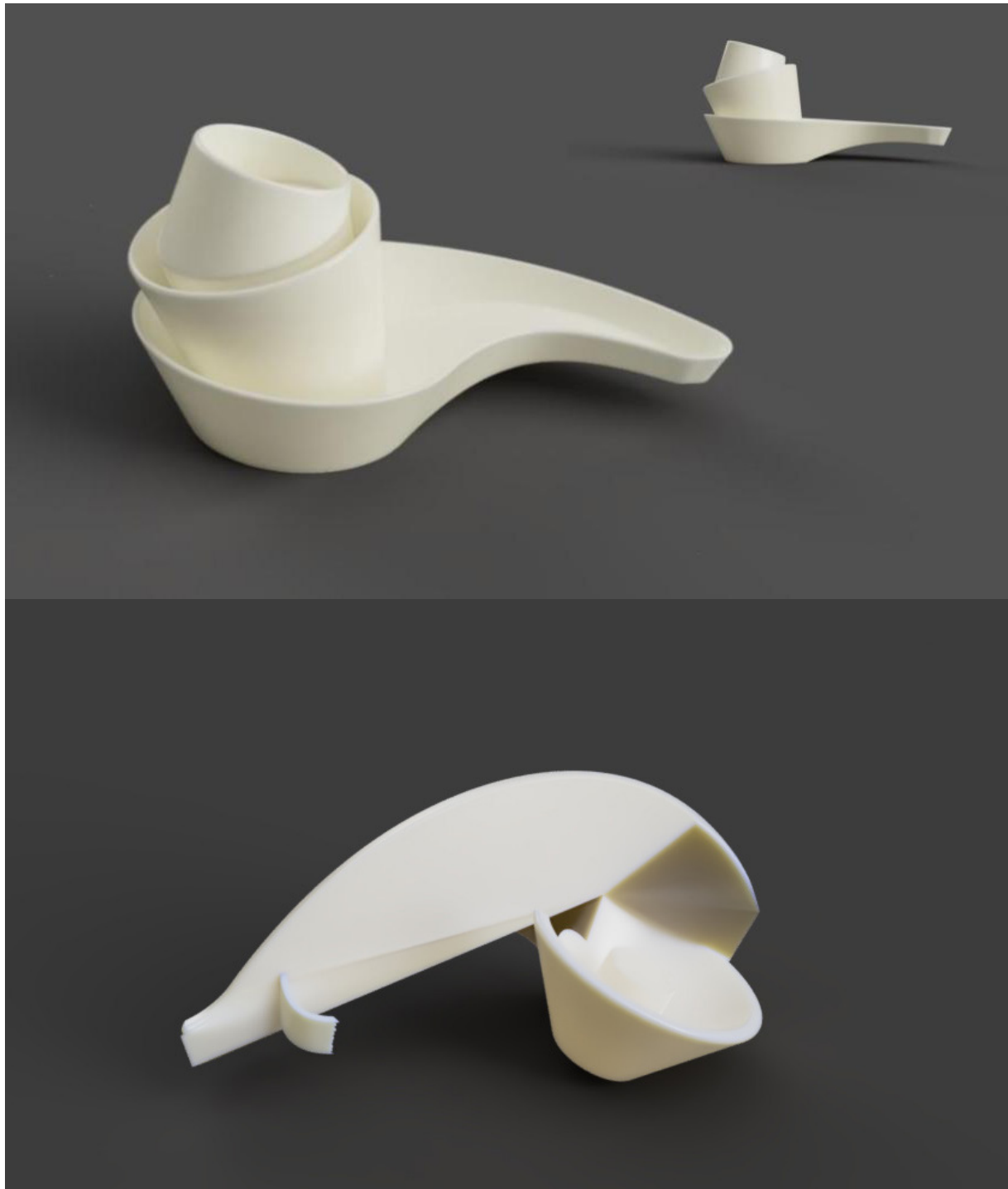




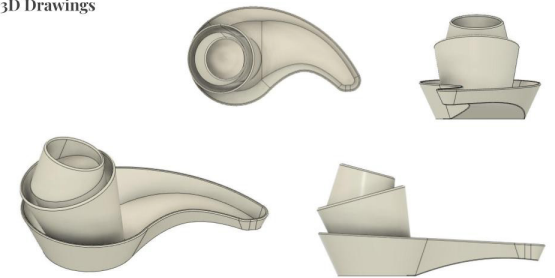




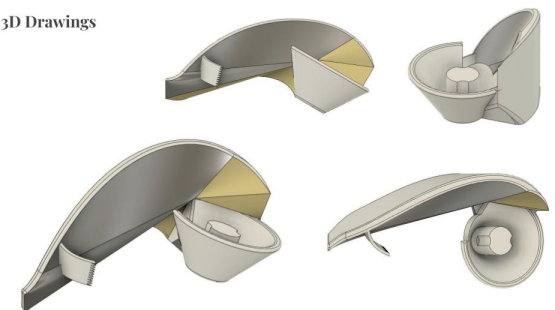




3D Drawings



3D Drawings



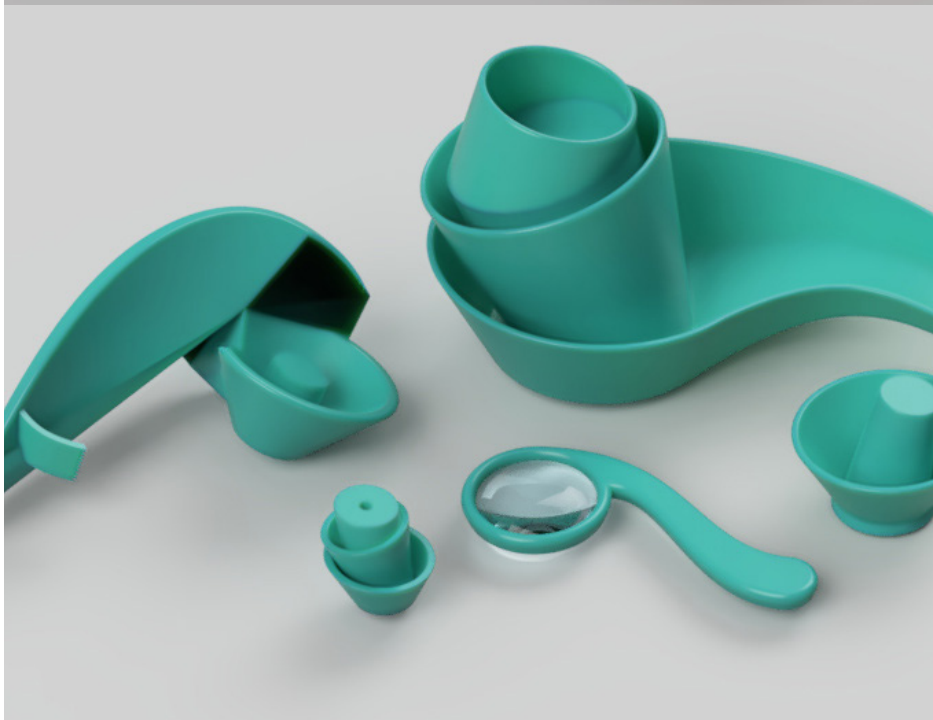
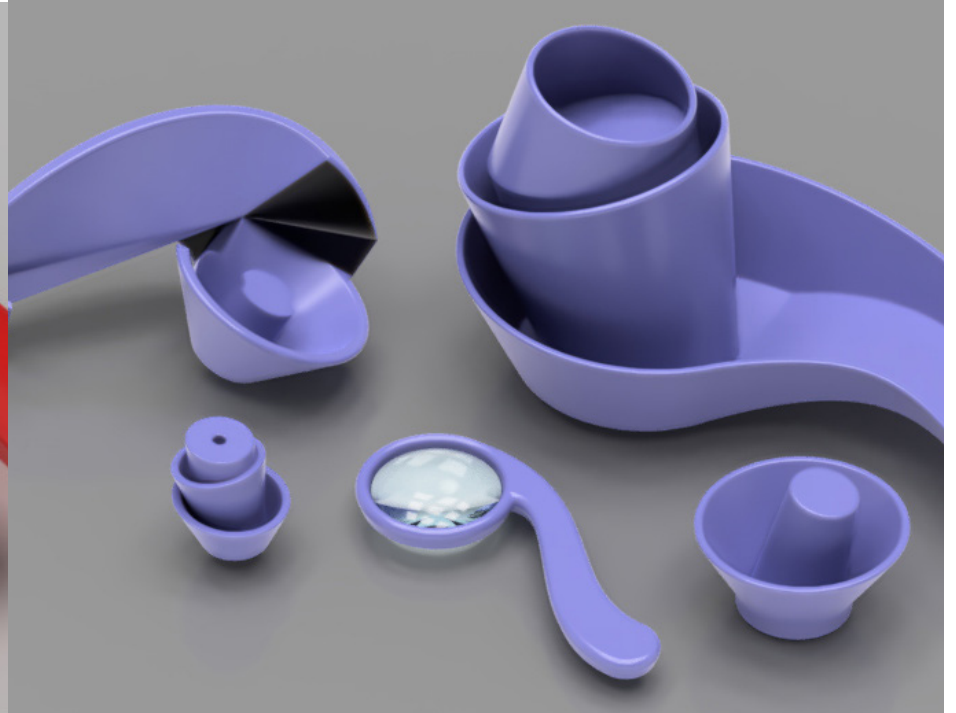


3D Drawings



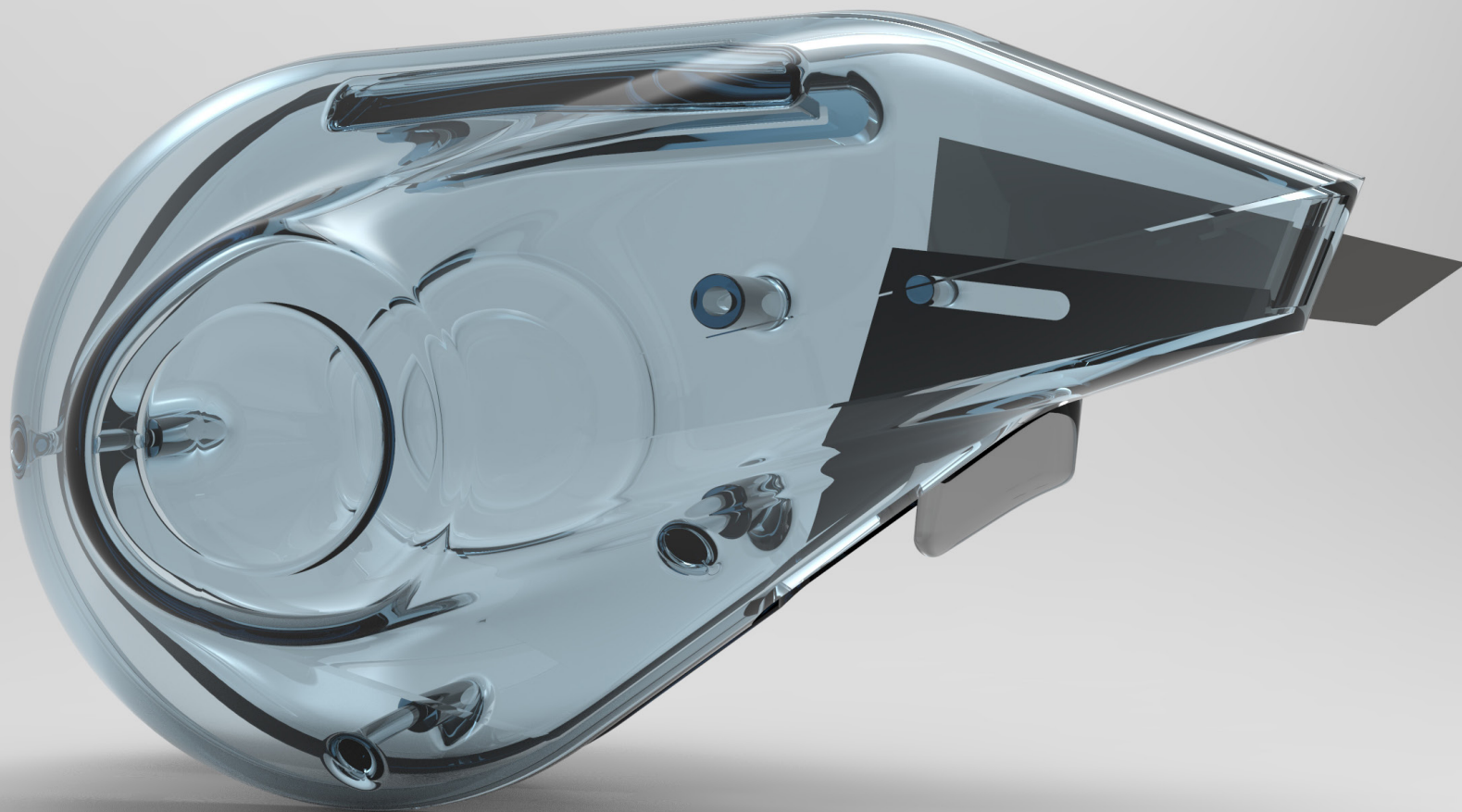
3D Drawings

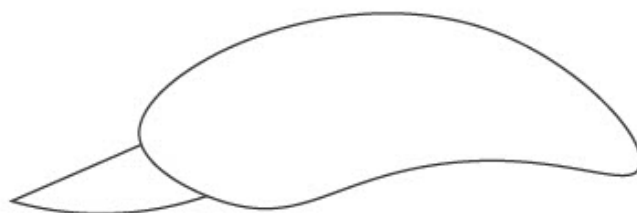
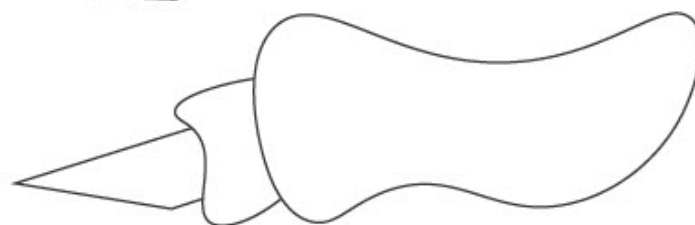
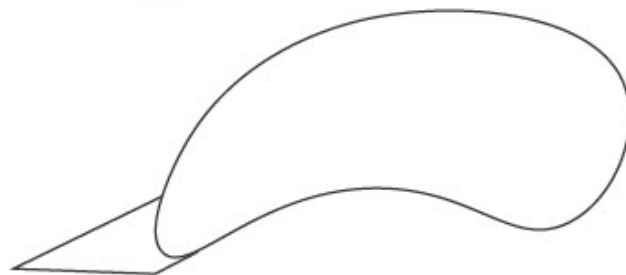
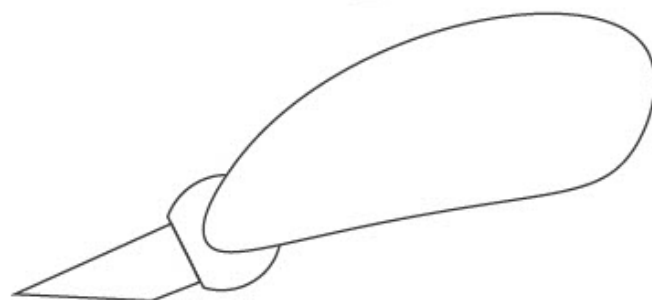
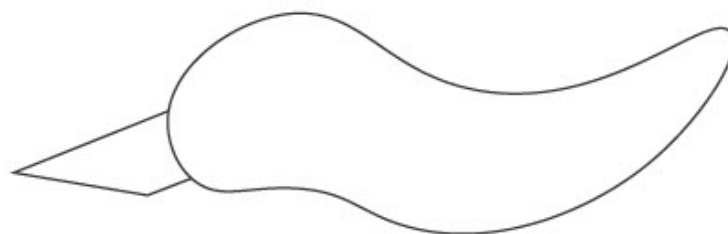
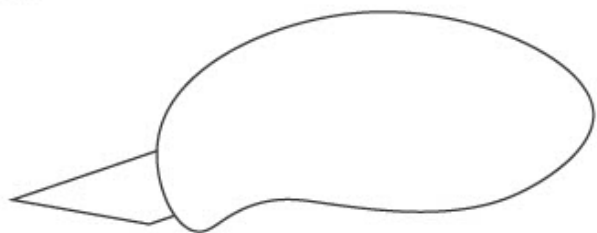
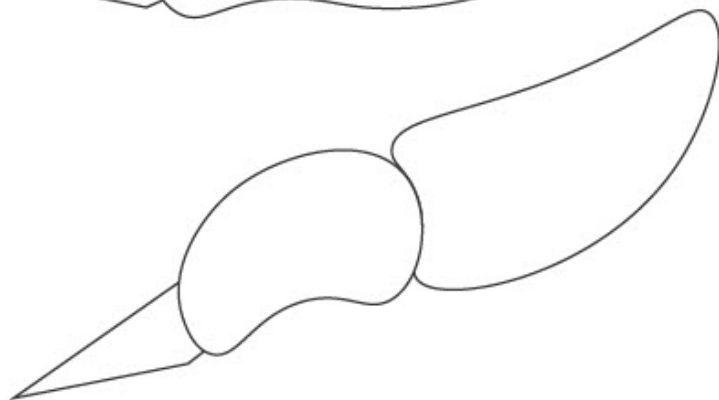
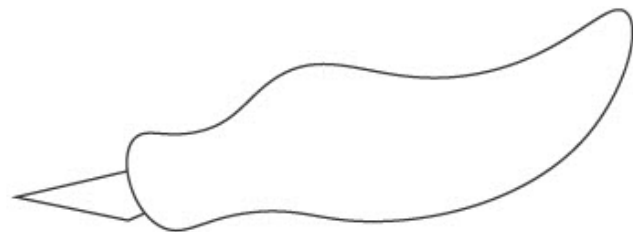
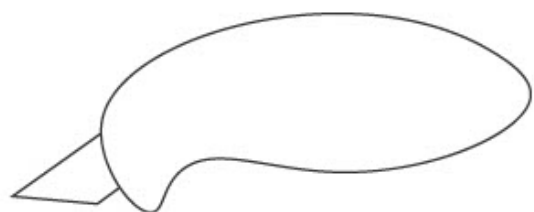
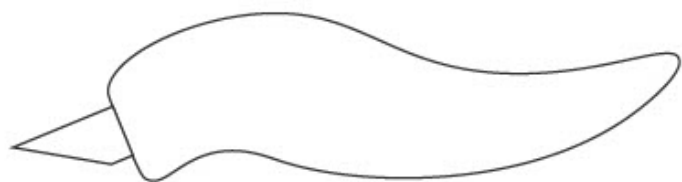


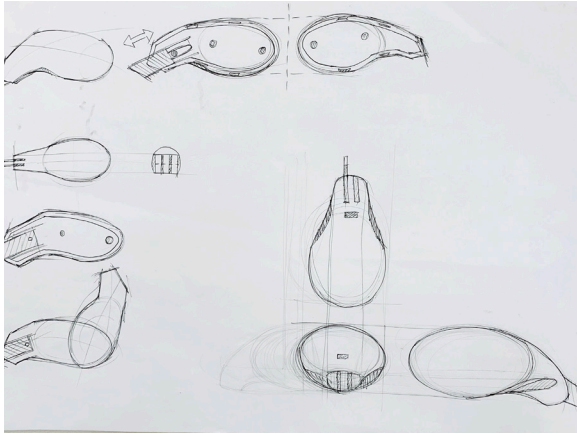


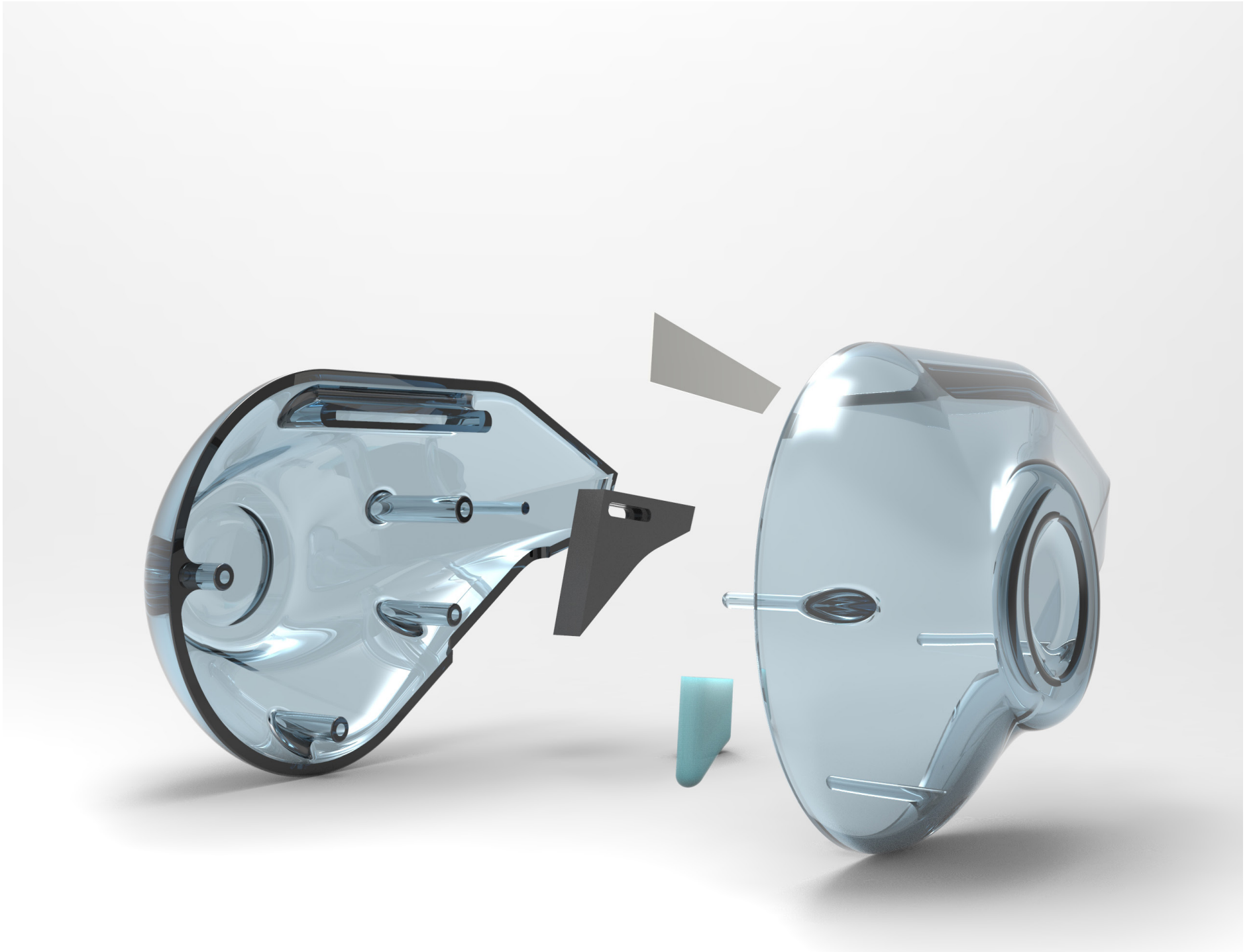


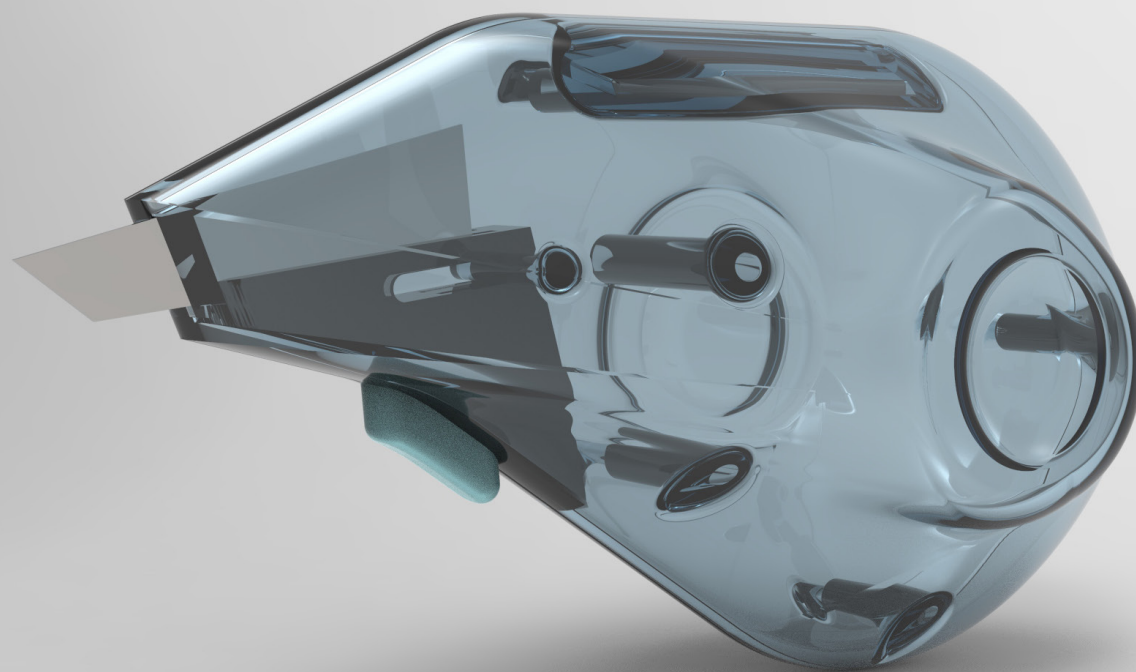
Mini-Exacto





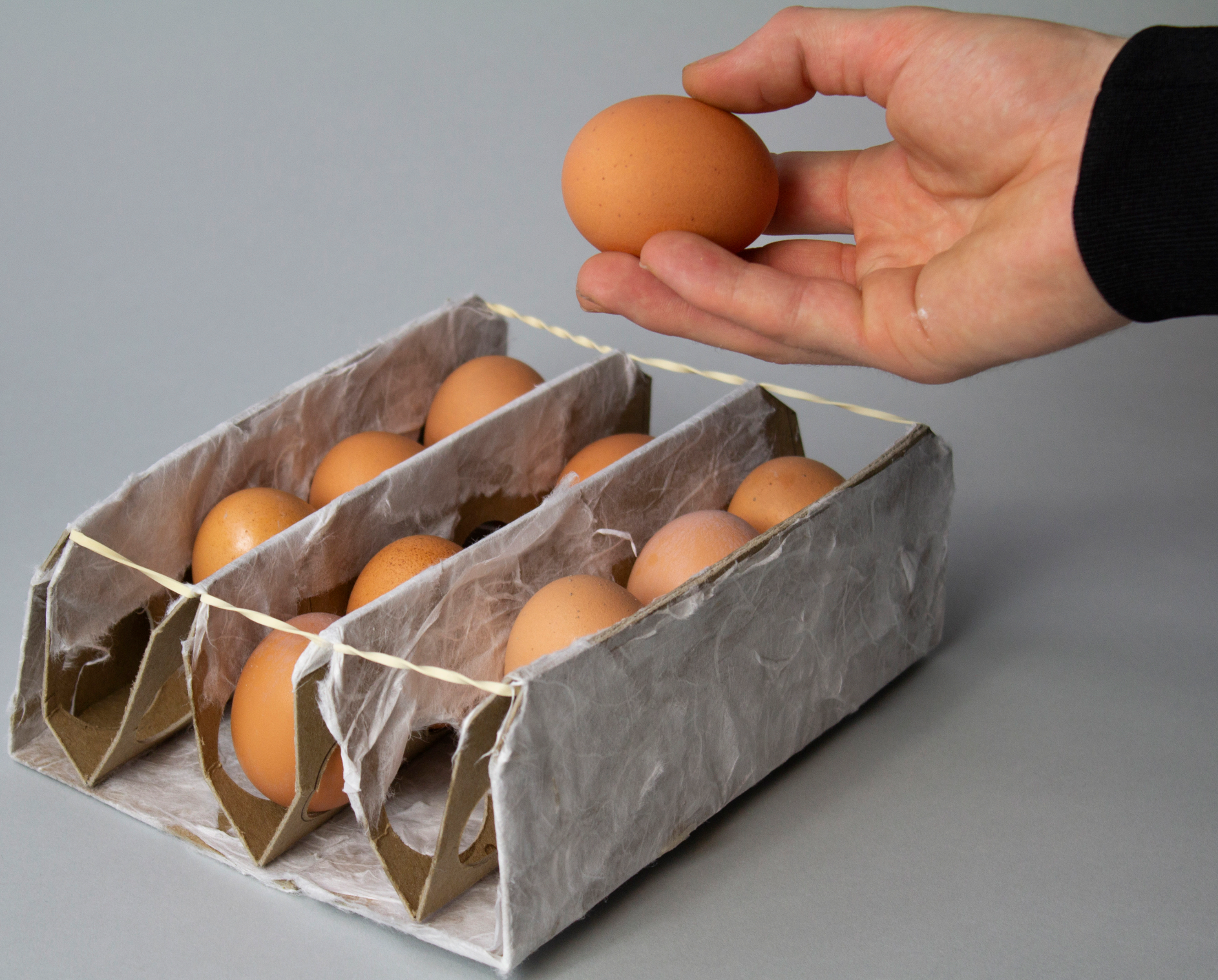






BUG Project: Egg Packaging Design





BUG: Holding Pistachio
shells

Solution: one bowl
with two sections



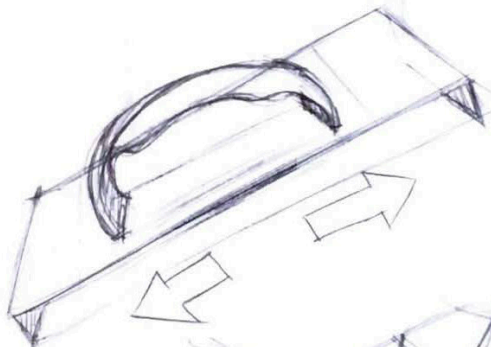
BUG: Holding device when I
lie down

Solution: collapsible pillow
tent that holds a device



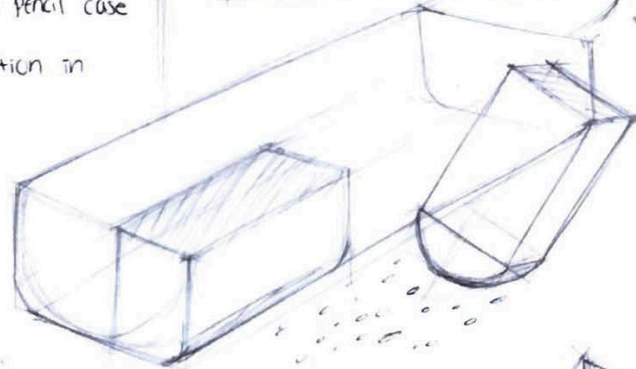
BUG: Cutting thick
chipboard straight

Solution: Adjustable
straight liner.



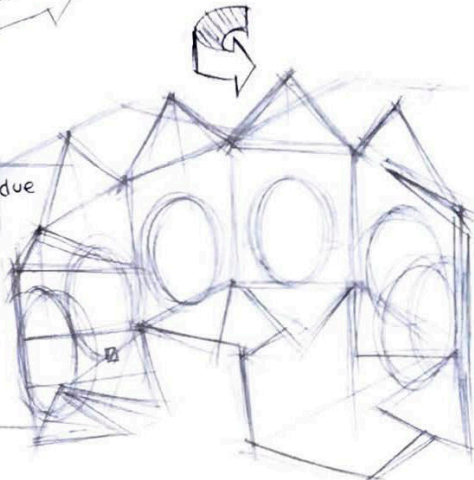
BUG: Eraser dust in pencil case

Solution: Different section in
pencil case



BUG: Eggs get cracked due
to a weak packaging

Solution: New packaging
design



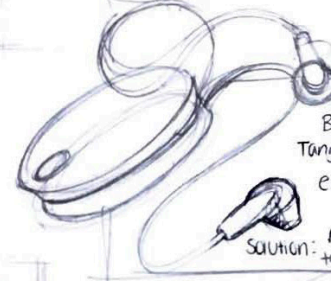
BUG: Sticky
honey bottle

Solution:
Pumping
bottle



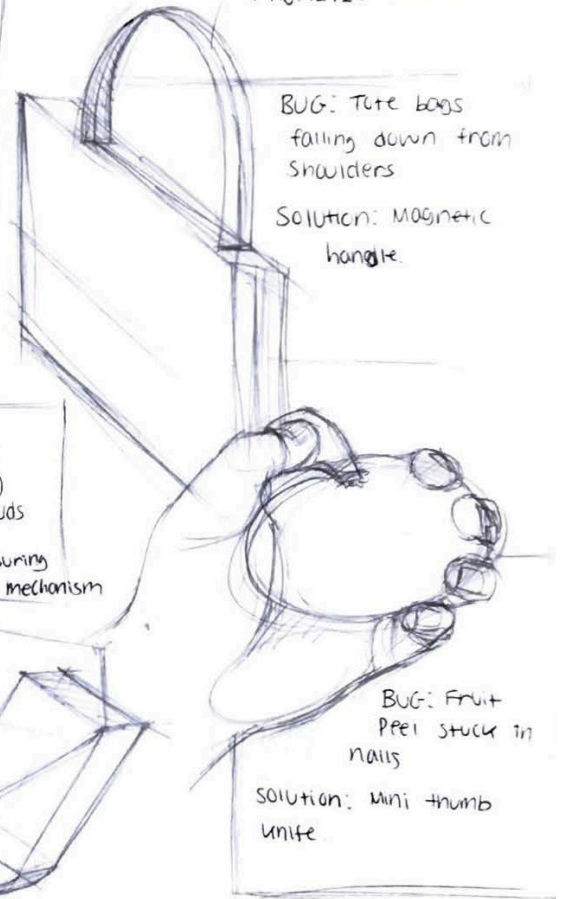
BUG:
Tangling
earbuds

Solution:
measuring
tape mechanism



BUG: Tote bags
falling down from
shoulders

Solution: Magnetic
handle.

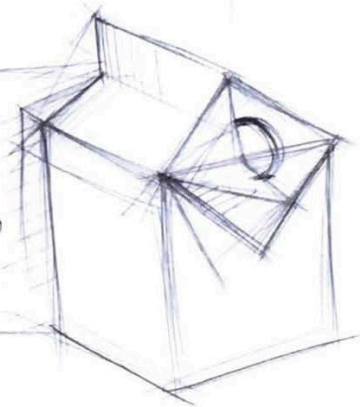


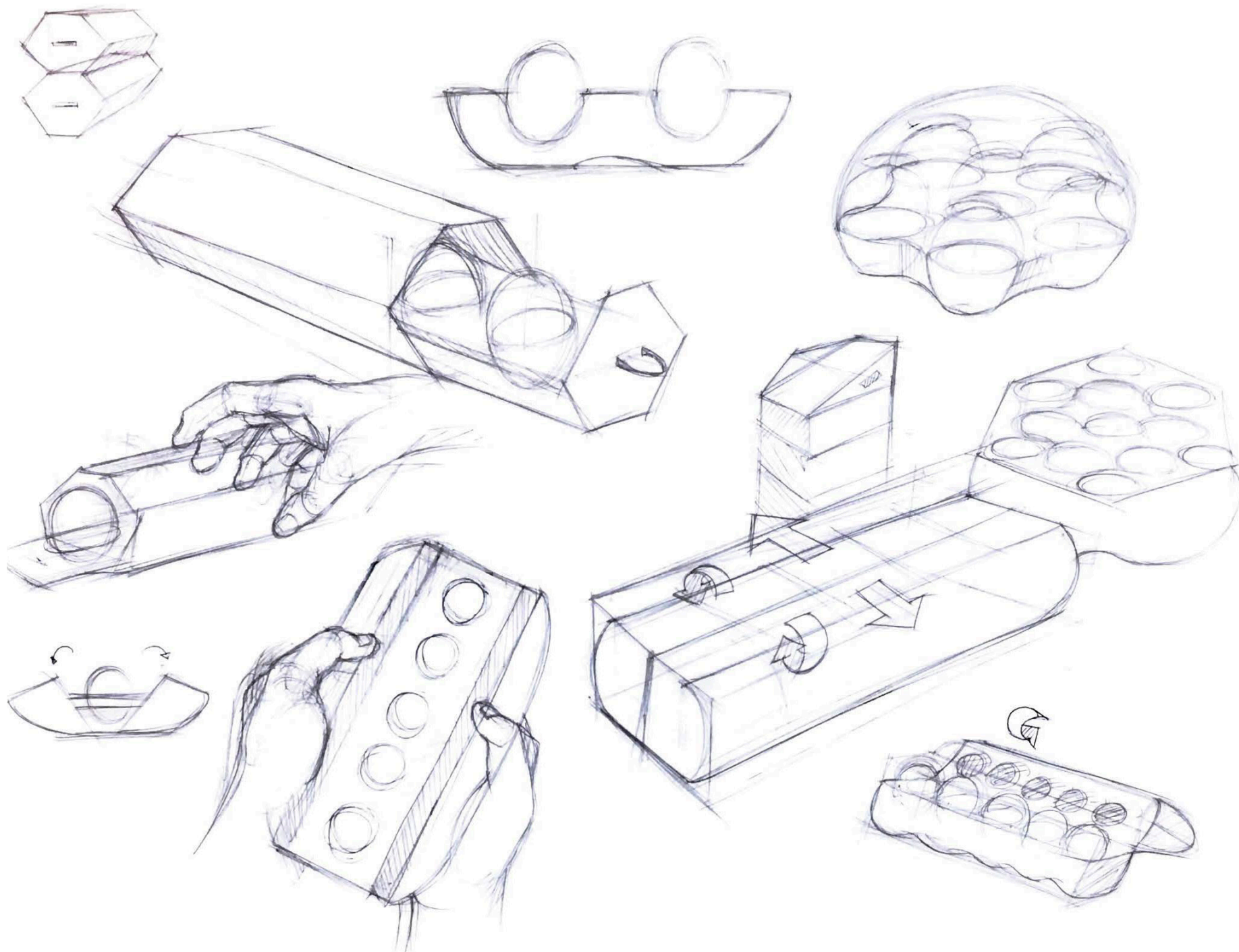
BUG: Fruit
peel stuck in
nails

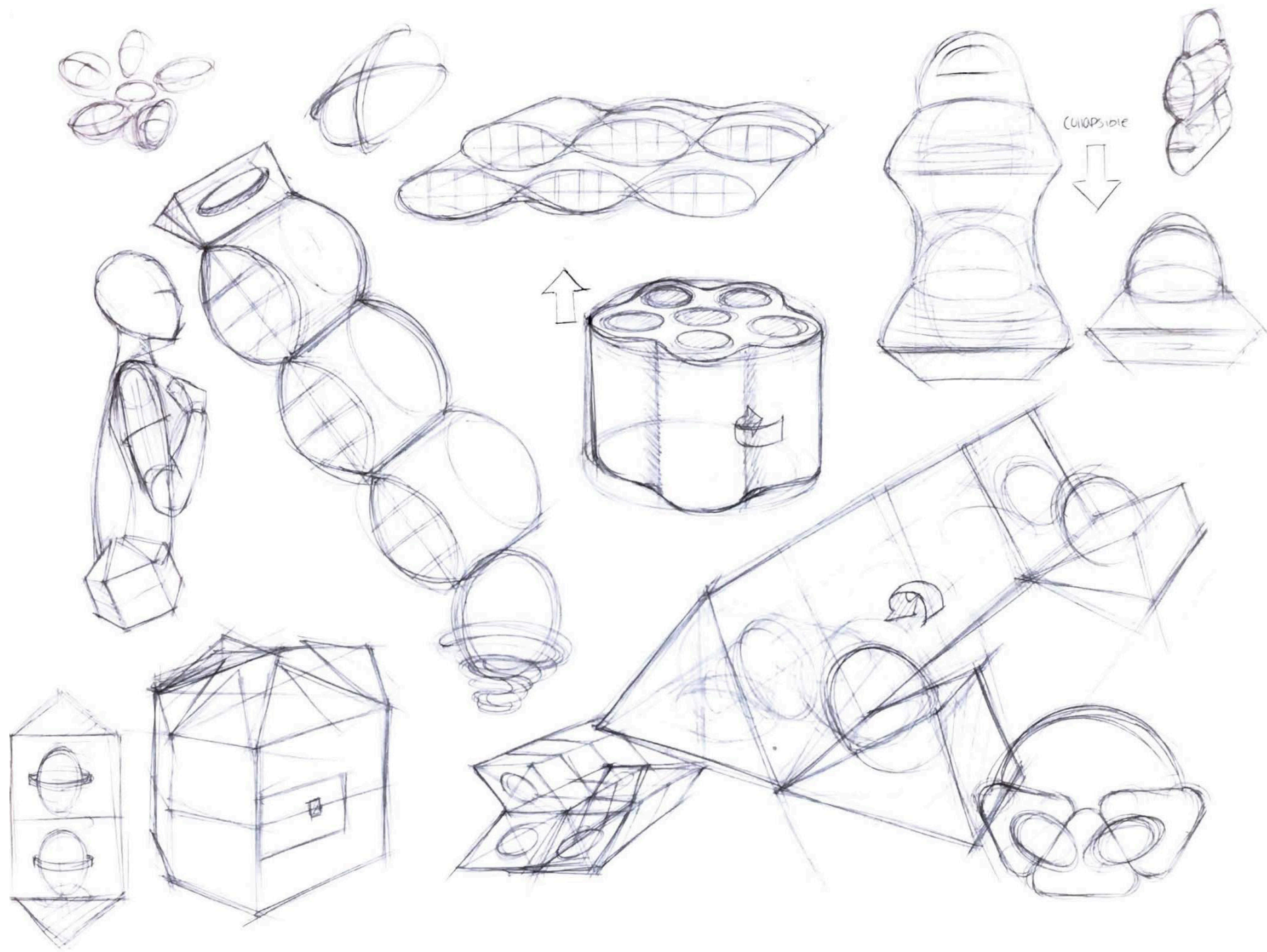
Solution: mini thumb
knife

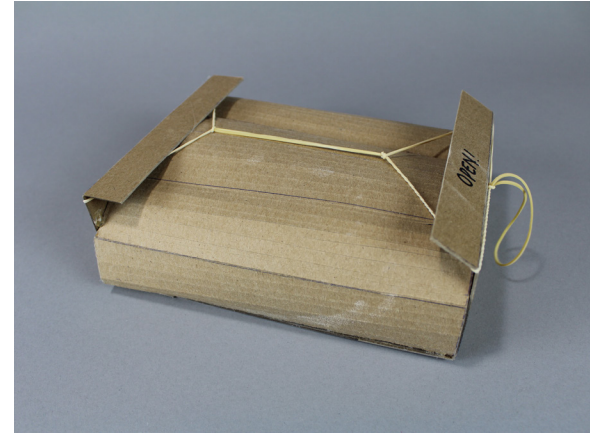
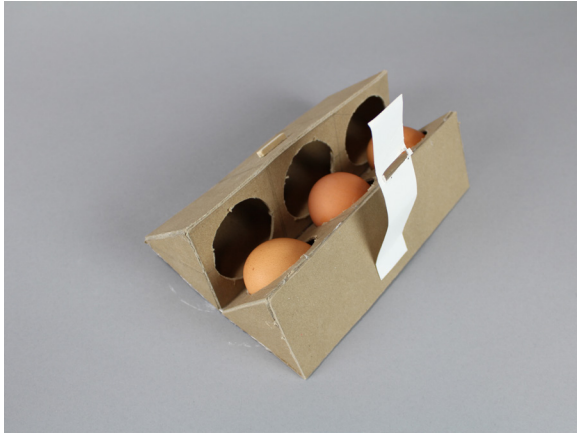
BUG: Opening milk
cartons

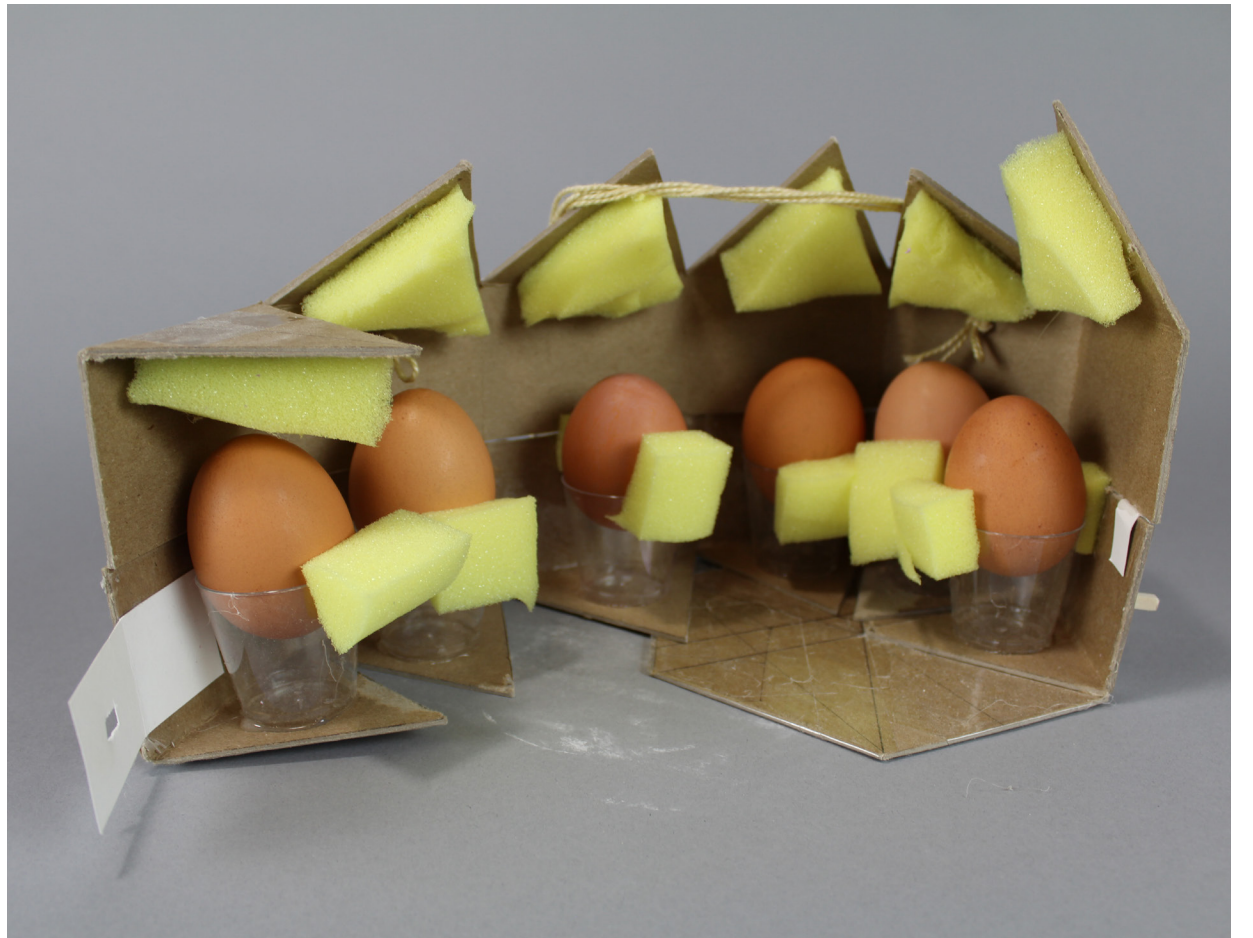
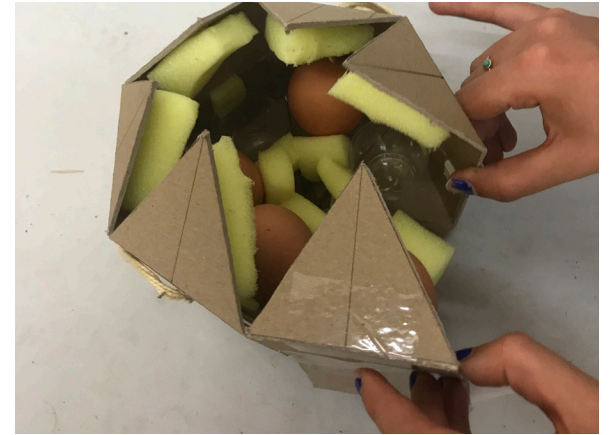
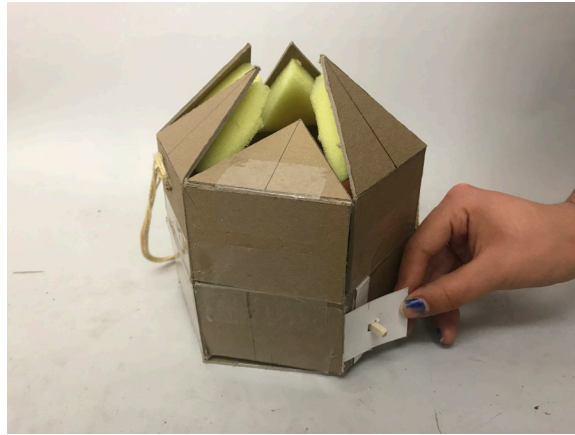
Solution: New
milk carton design

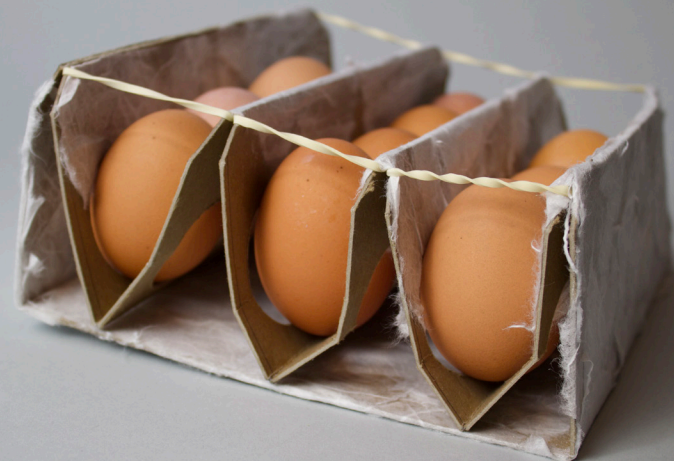
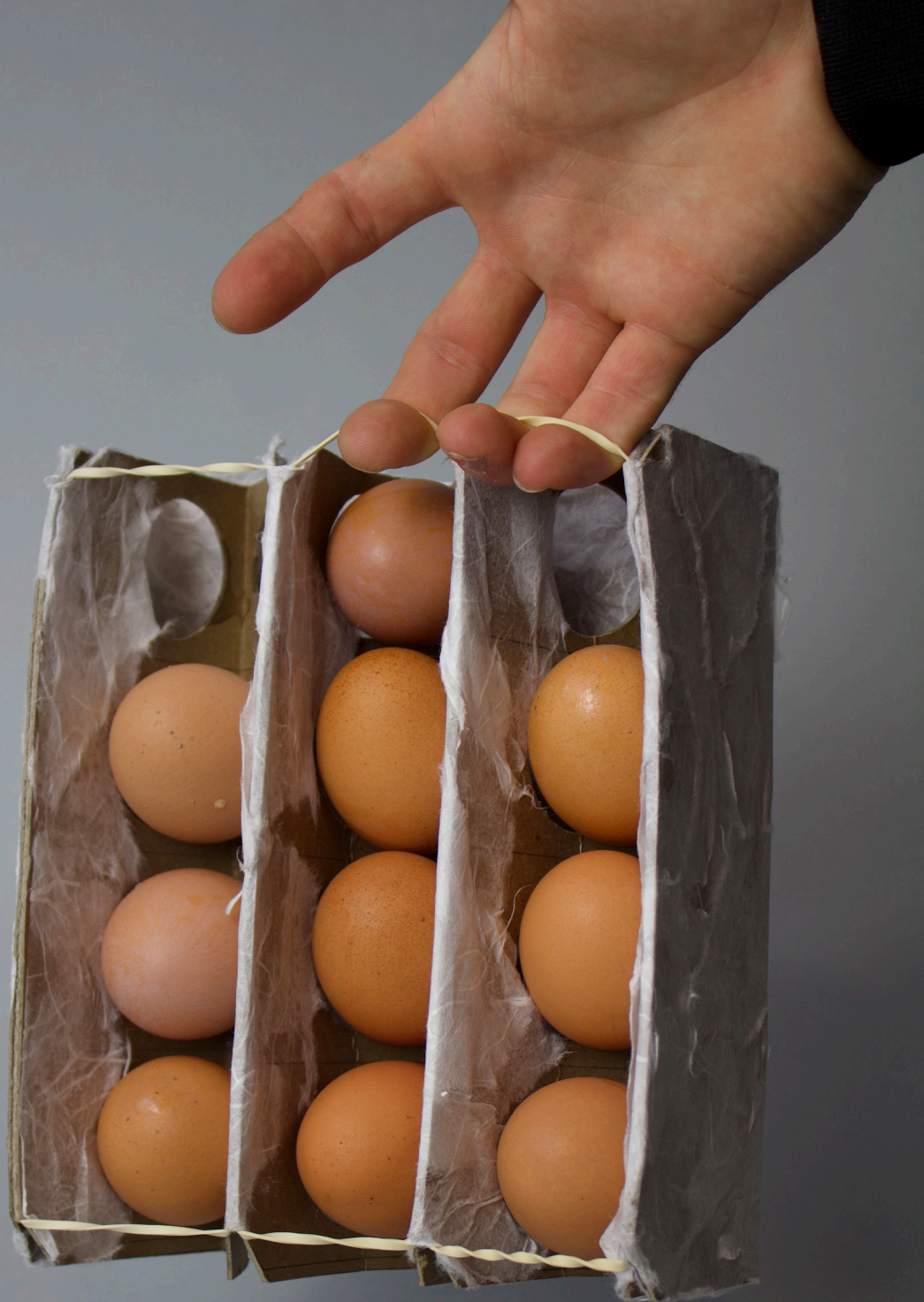








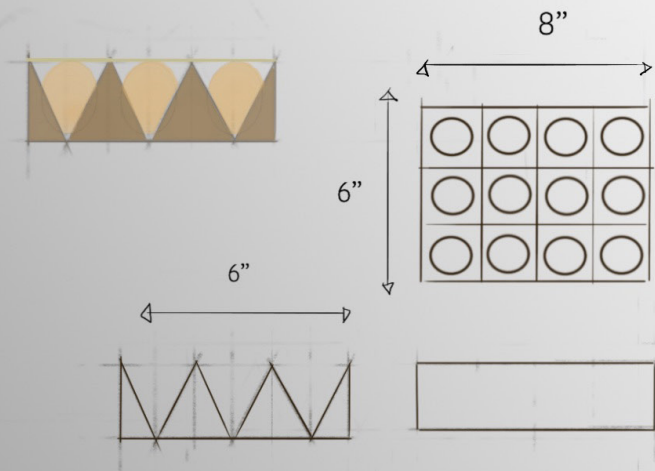
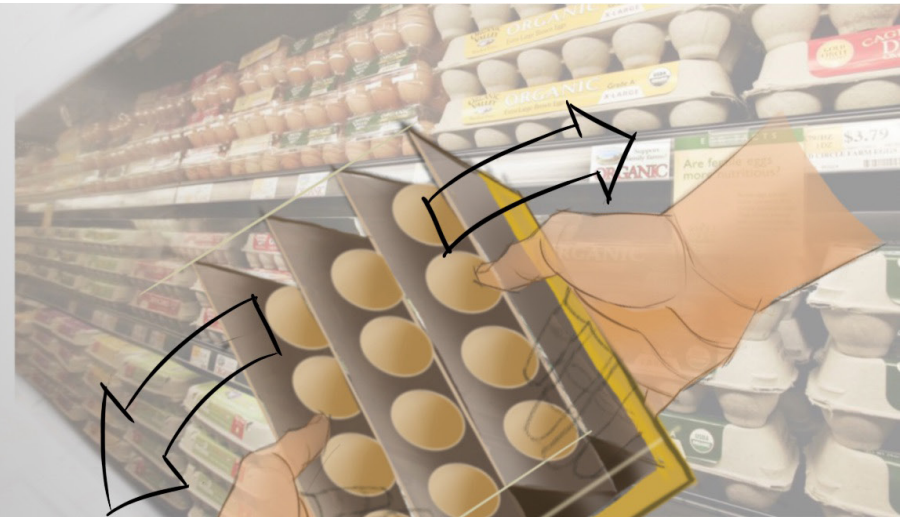
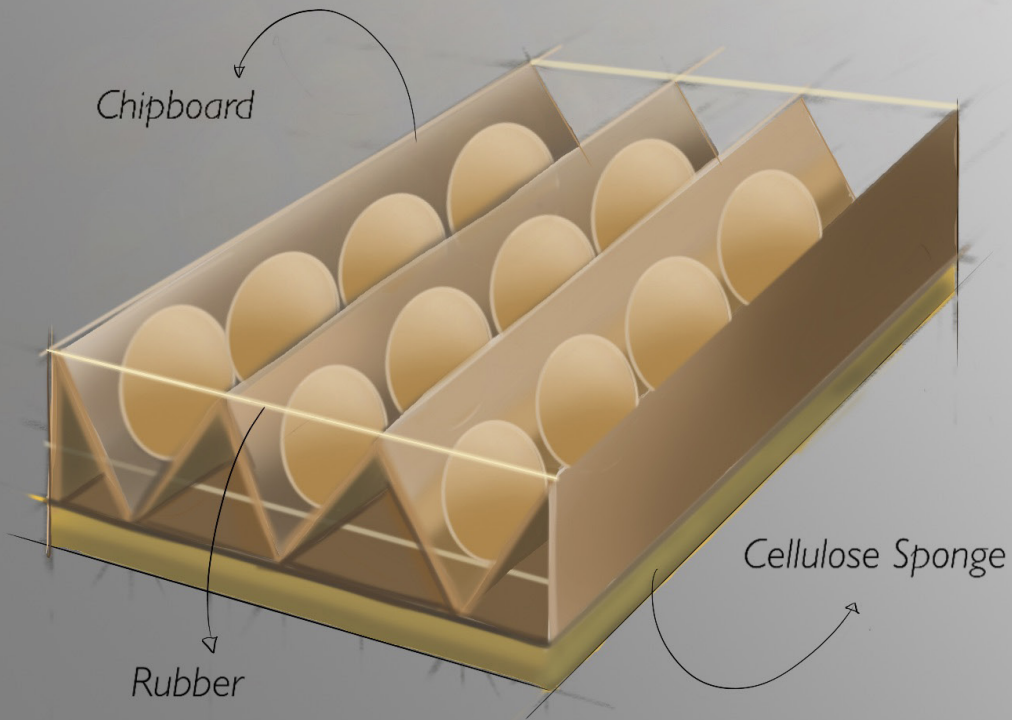




Egglio

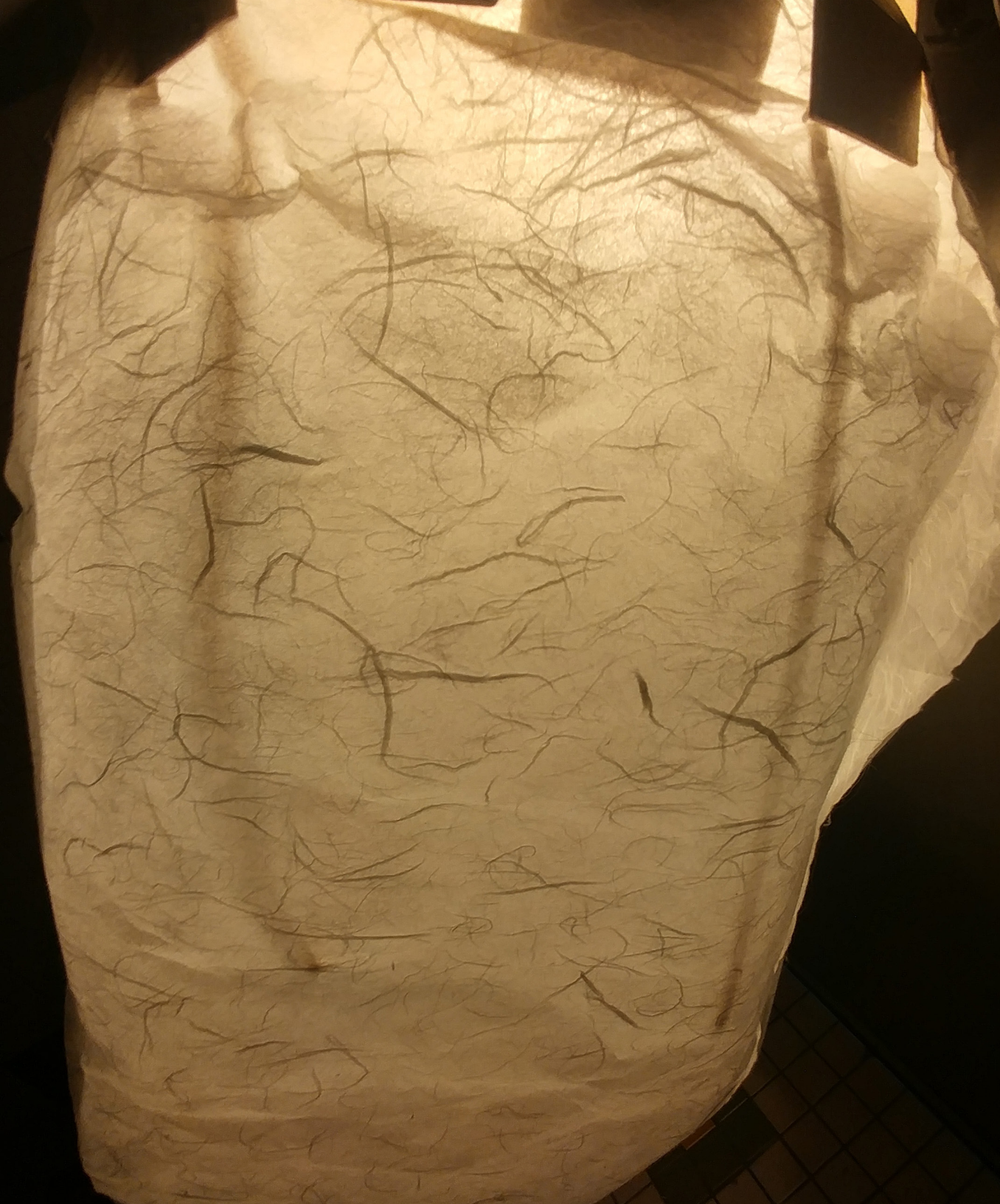
Designed by Yoonah Choi

Egglio is a new egg packaging for protecting eggs from breakage. Customers do not need to open packaging to check breakage since there is no opening cap. Smoothly stretch out the sides and take out your eggs!



Hanji:
Breathing Paper





The lighting design was inspired from the Korean culture and its traditional handmade paper called Hanji. The elongated and abstract structure and the way Hanji captures the shadows of rectilinear forms represent paper's long durability and traditional patterns that are inspired by Mondrian Art. Organic curves of translucent paper that move through the structure symbolizes wind and how natural light can flow through the Hanji.





Yoonah Choi
Pratt Institute 2021
ychoidesign99@gmail.com