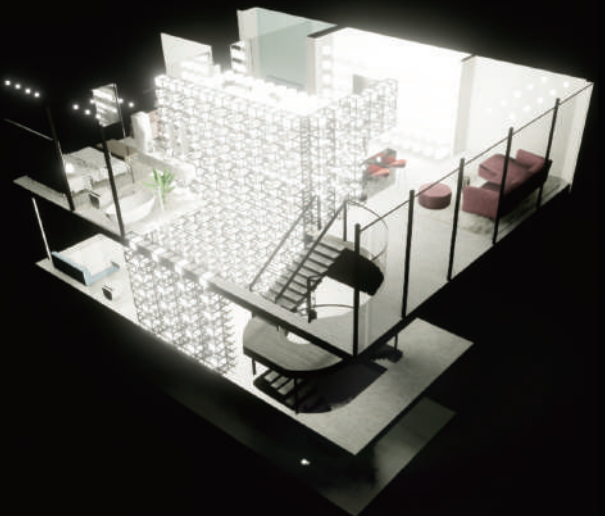
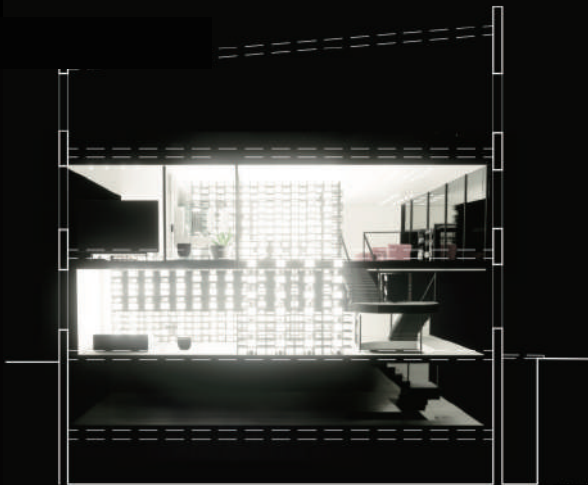




## MULTI-USE HOME : RESIDENTIAL + RETAIL

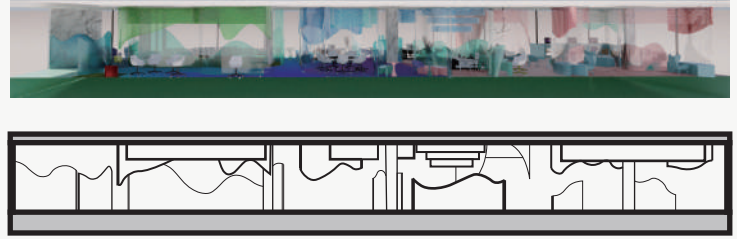
In this project the precedent study is Maison de Verre located in Paris, I was inspired by the mason's frosted glass blocks, and I designed a lighting and candle storage structure that go through the building. The first floor is designed as candle shop and grandma's personal area since she owns a small naturally scented candle shop, the basement floor is designed for making candles. The second floor is living area that designed for the rest of the family. The materiality of the dwelling is also very similar with Maison de Verre's design, which used lots of black steel and rubberized floor tiles and glass structures.





# LAP

LAP is a redesign of the office space for the United Nations Division for Inclusive Social Development. In LAP I experiment with 5 different methodologies from the curtain project: lines, layering, openness, gradation and color. By fitting the lines from curtain into the space I developed plan. The method of layering help to define the structure and variation of partitions. The gradation of carpet concept is from the curtain project, the subtle change of gradation include all the colors that included in client's sustainable development goal. The height variation of curved partition ensures the flexible privacy of the space.



SECTION A



WORKING ZONE



REST ZONE

