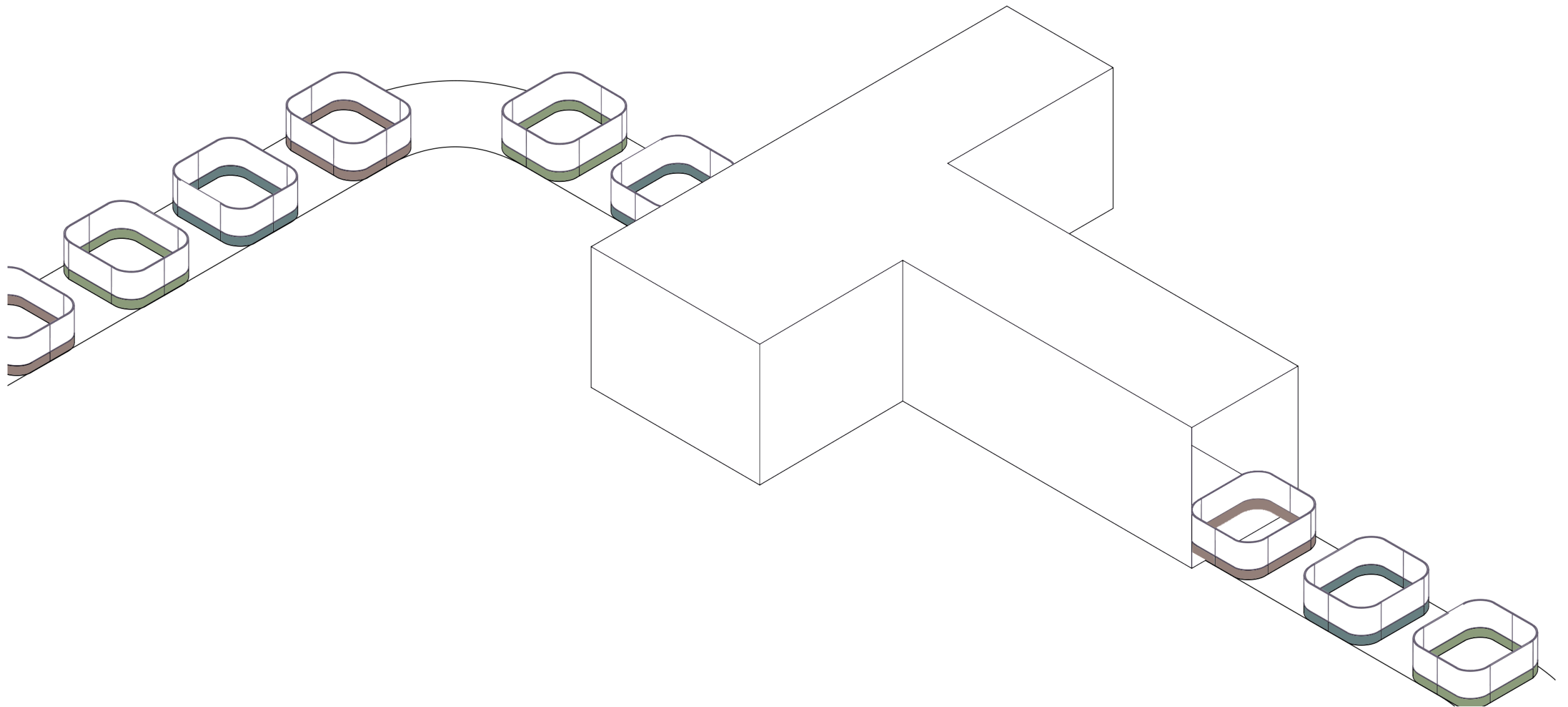


ANTI-BULLY CAPSULE

YUYANG BAI

PROFESSOR A. SCHWEDER

INT-402-04



CONTENT

01 THESIS STATEMENT

02 DEFINITION

03 PROPOSAL

04 ESCAPE

05 STRATEGY/PROGRAM

06 SITE

07 CAPSULE

08 FLOORPLAN

09 CIRCULATION

10 CAPSULE ON SITE

11 SECTION

12 AXONOMETRIC VIEW

YUYANG BAI

INTERIOR DESIGN
THESIS

01 THESIS STATEMENT

The project is focusing on the change of power dynamic between older & younger students in school and trying to solve the problem of bullying in schools.

By experiencing views from others, people can get a deeper understanding of each other, and reducing the power dynamic to create an equal communication scene.

02 DEFINITION

BULLYING
NOUN [U]
THE BEHAVIOR OF A
PERSON WHO HURTS OR
FRIGHTENS SOMEONE
SMALLER OR LESS
POWERFUL, OFTEN
FORCING THAT PERSON
TO DO SOMETHING THEY
DO NOT WANT TO DO:

DICTIONARY.
CAMBRIDGE.ORG

BULLYING IS UNWANTED, AGGRESSIVE BEHAVIOR AMONG
SCHOOL AGED CHILDREN THAT INVOLVES A REAL OR
PERCEIVED POWER IMBALANCE.

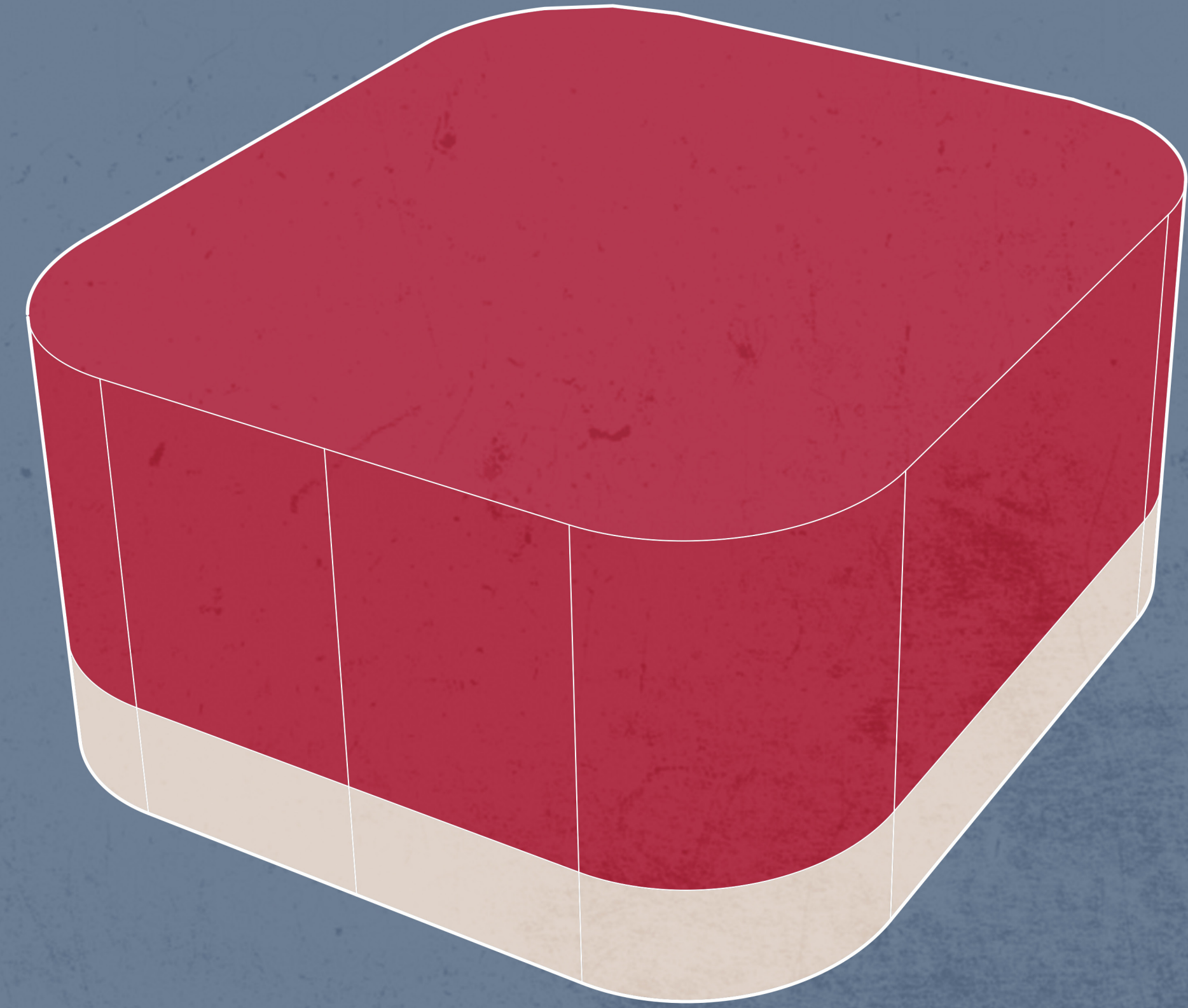
AN IMBALANCE OF POWER: KIDS WHO BULLY USE THEIR
POWER—SUCH AS PHYSICAL STRENGTH, ACCESS TO
EMBARRASSING INFORMATION, OR POPULARITY—TO
CONTROL OR HARM OTHERS. POWER IMBALANCES CAN
CHANGE OVER TIME AND IN DIFFERENT SITUATIONS, EVEN
IF THEY INVOLVE THE SAME PEOPLE.

REPETITION: BULLYING BEHAVIORS HAPPEN MORE THAN
ONCE OR HAVE THE POTENTIAL TO HAPPEN MORE THAN
ONCE.



03 PROPOSAL

The project is not only about updating the changes to my site, but also focusing on discover opportunities for design modules that could easily apply to other sites, in order to help more students that suffering from bullying in school.



04 ESCAPE

Everyone who lives in society is made from countless relationships. And everyone must admit that they have more or less unpleasant relationships. Even adults cannot handle it very well. In my thesis project, I am trying to create positive relationships by using narrative spaces to guide people. By helping and teaching children how to establish a healthy relationship, it will not only give them a better childhood in school but also can help them in the future of working and living with others.



05 STRATEGY/PROGRAM

PREVENT

PARENTS
SCHOOL STAFF

UNDERSTAND
BULLYING

COMMUNICATION

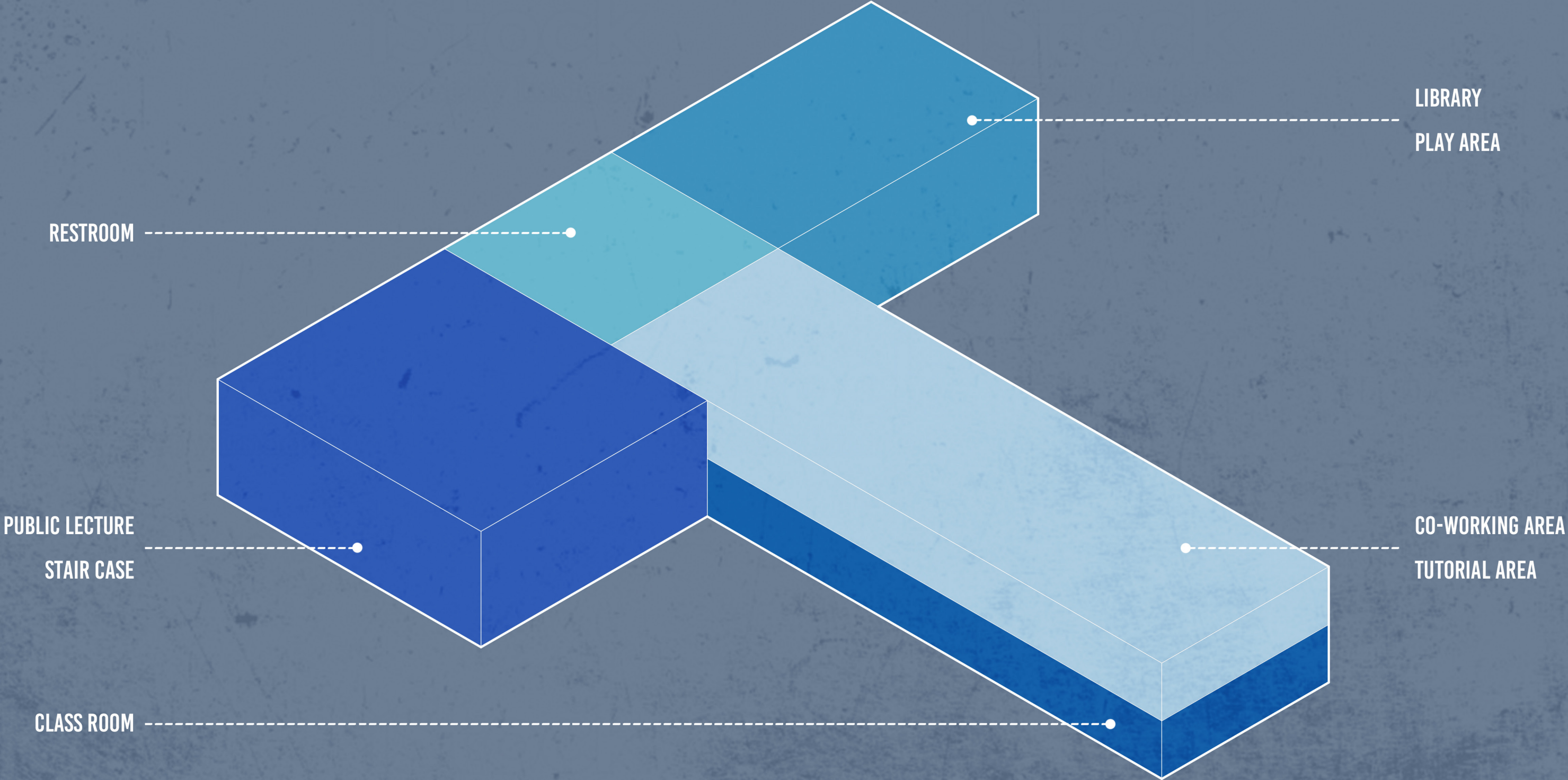
REWARD

PROGRAM

- TEACH/PARENTS CO-WORKING SPACE
- STUDENT SHARING STAGE
- MONITOR BULLYING “HOT SPOTS”
- CLASSROOM FOR PARENTS AND STAFF IN SCHOOL
- PAIR UP CENTER FOR STUDENT

DESIGN

- OPEN UP MORE PUBLIC SPACE
- BRING MORE NATURAL LIGHT
- COLLABORATE SPACE
- REDUCE POWER DYNAMIC
- AGE/GENDER/BODY TYPE/ETC. FRIENDLY



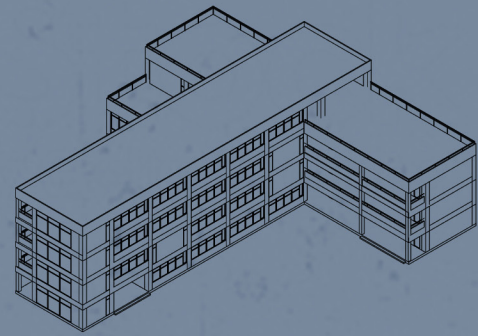
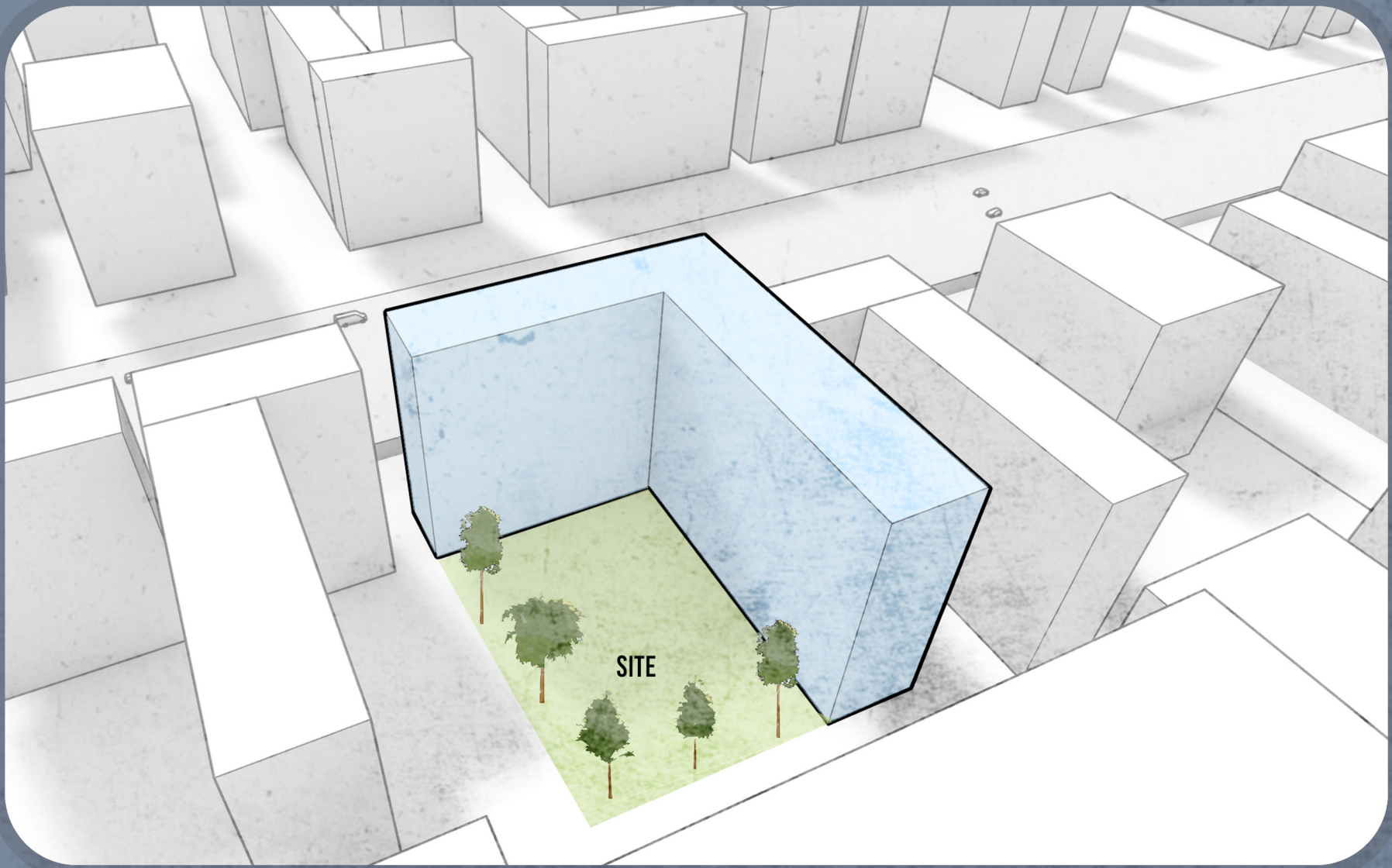
06 SITE

10 ZHONGGUANCUN NORTH 1ST STREET
BEIJING, CHINA

ZHONGGUANCUN NO.2 ELEMENTARY SCHOOL

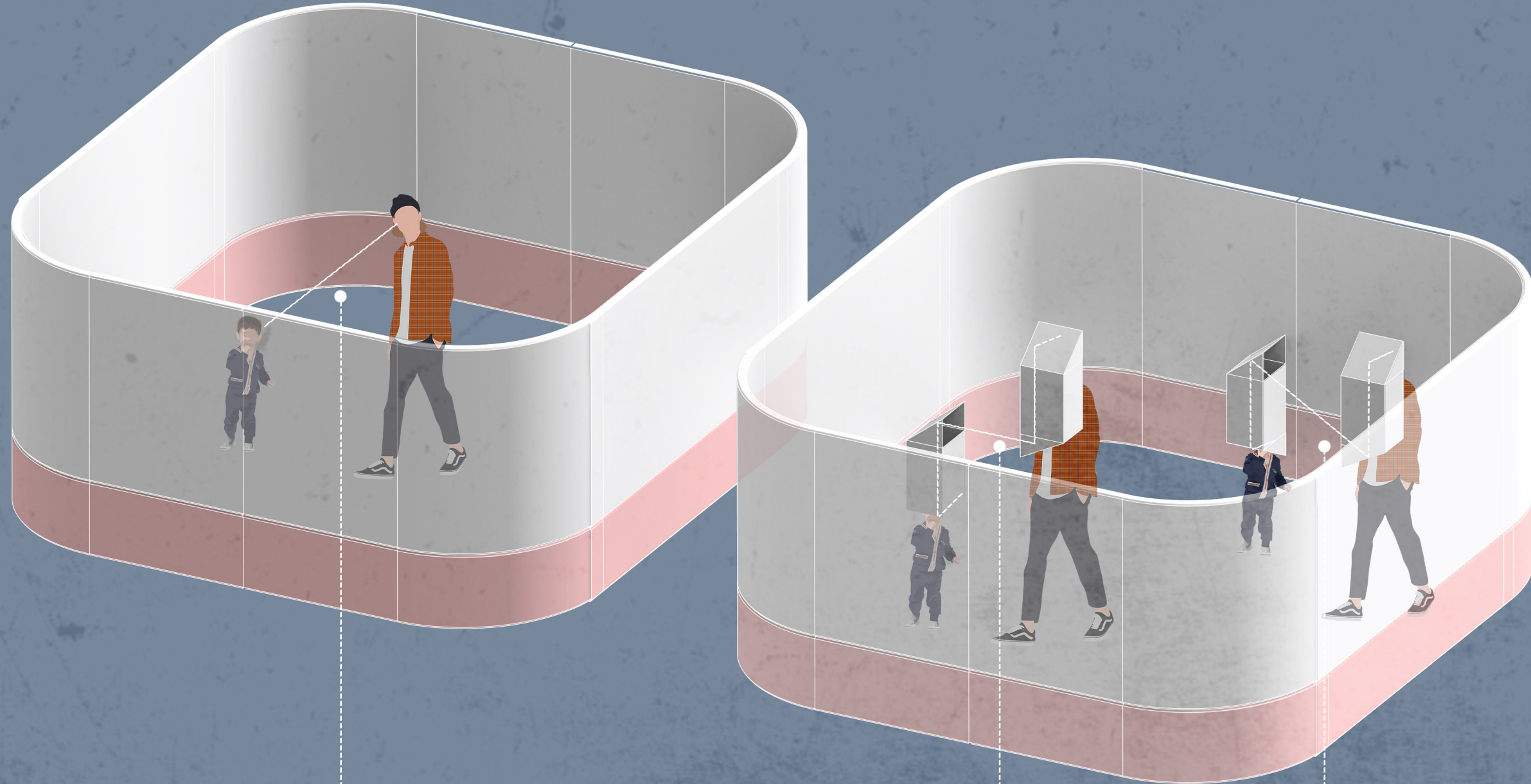
AN ELEMENTARY SCHOOL

FAMOUS FOR THE BULLY NEWS



07 CAPSULE

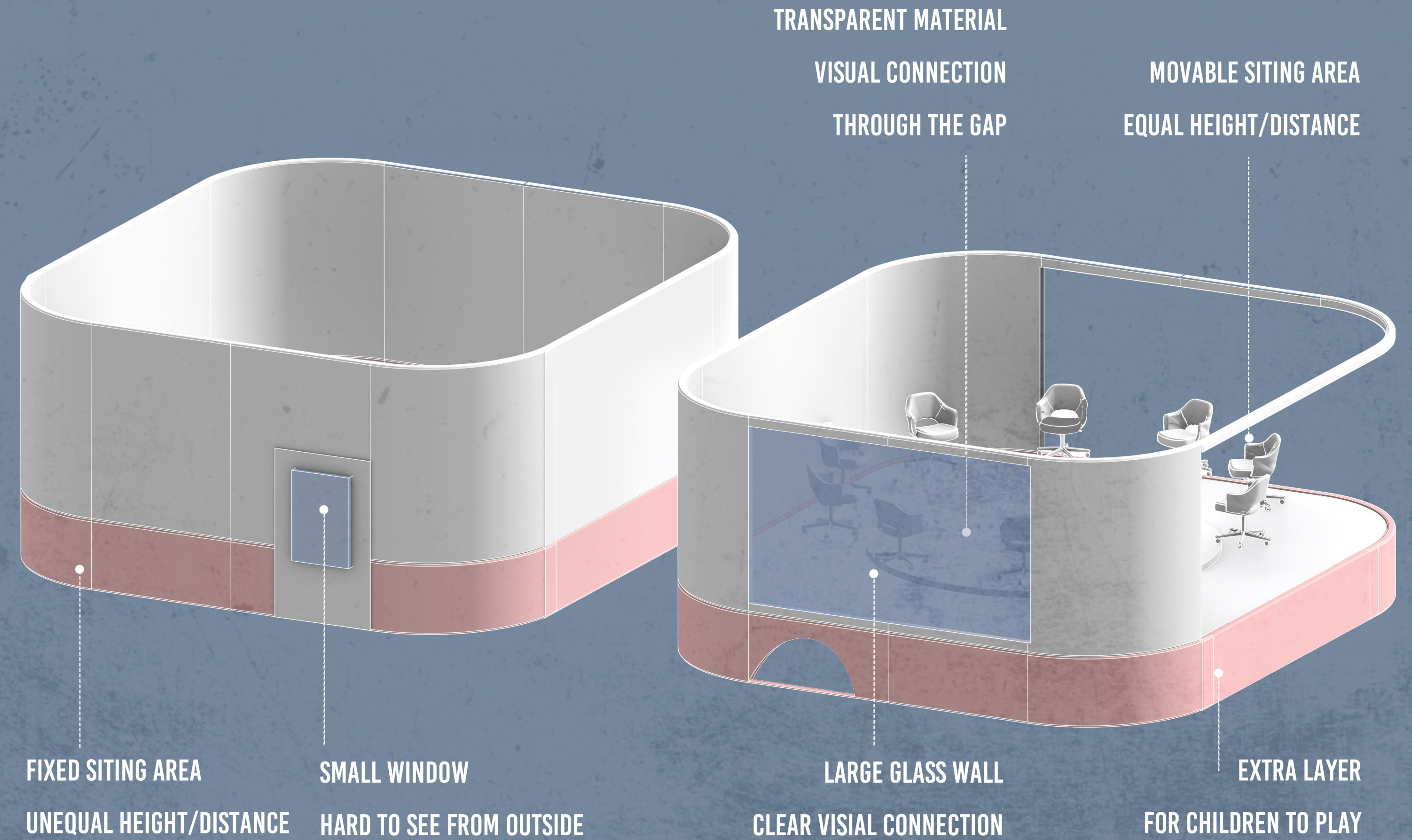
CAPSULE 00
SOCIAL EQUIPMENT



POWER DYNAMIC CREATED BY HEIGHT
UNBALANCED EYE LEVEL

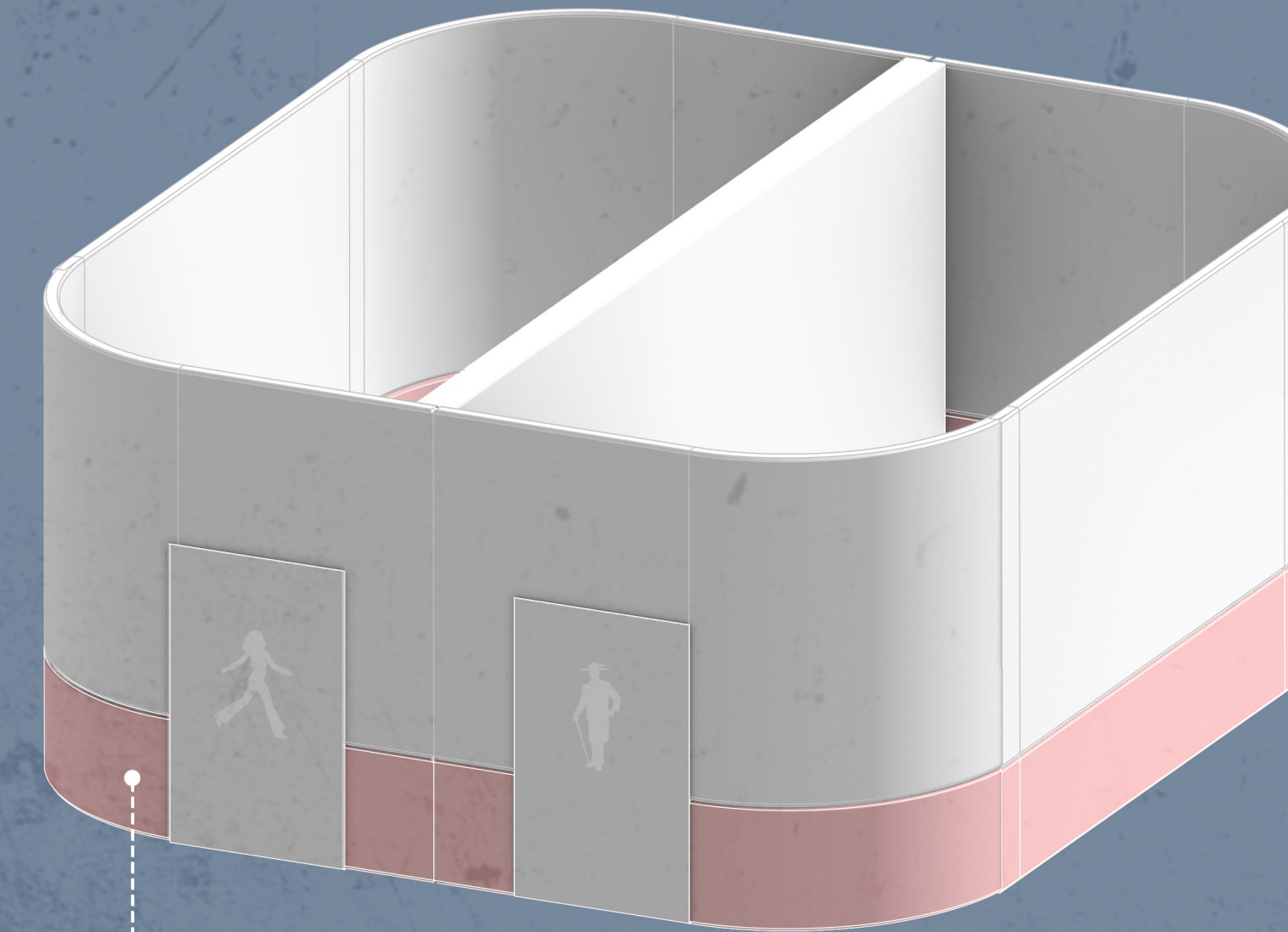
BALANCED EYE LEVEL REVERSED EYE LEVEL

**CAPSULE 01
CLASSROOM**



CAPSULE 02
RESTROOM

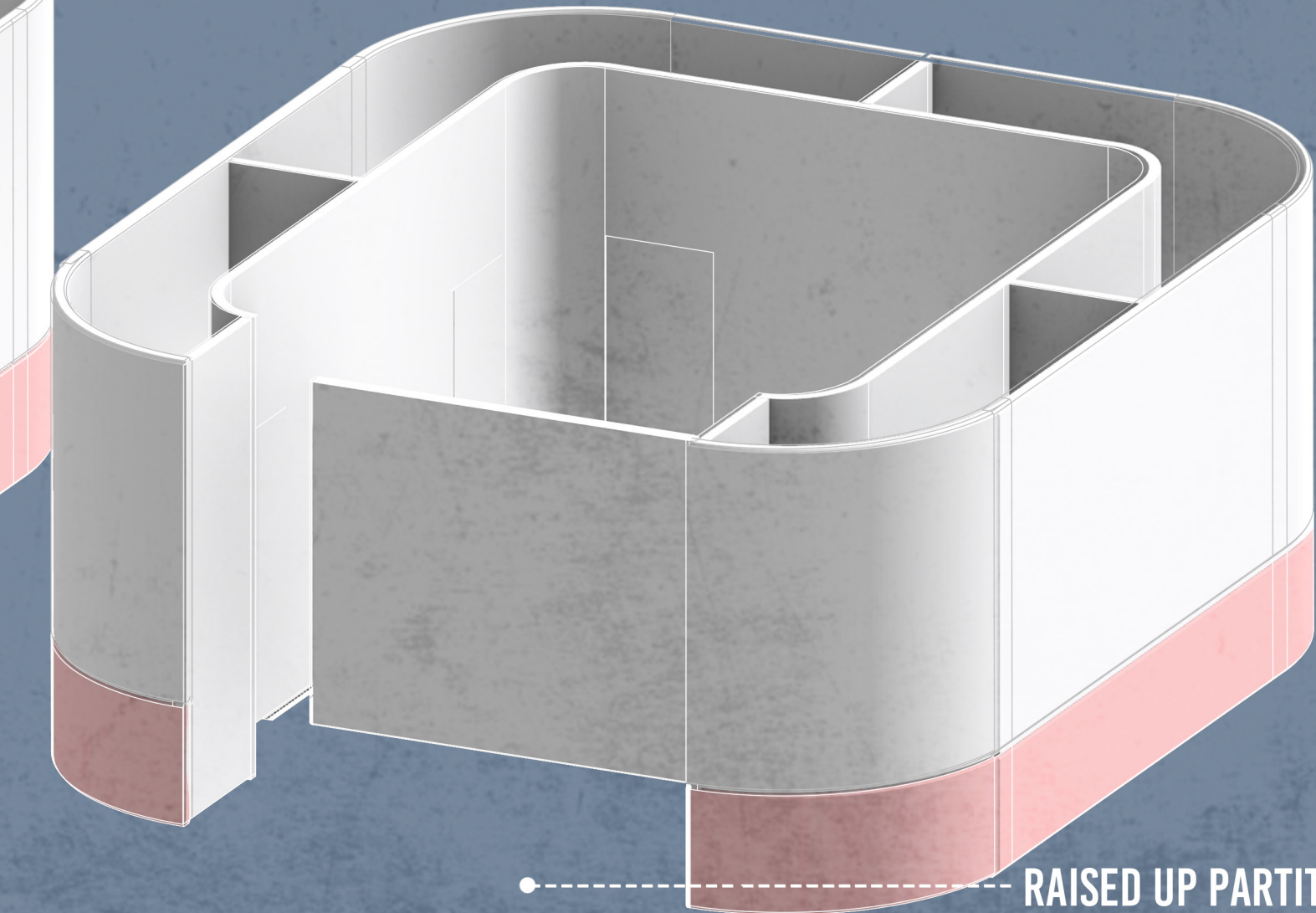
BINARY GENDER RESTROOM



FULLY CLOSED PARTITION

HARD TO KNOW WHAT IS GOING ON INSIDE

GENDER INCLUSIVE RESTROOM



RAISED UP PARTITION

VISIAL AND SOUND
CONNECTION THROUGH
THE GAP

CAPSULE 03
LIBRARY/PLAYGROUND

INDIVIDUAL ENTERTAINMENT
FACILITY

POWER DYNAMIC
CREATED BY HEIGHT
AND WEIGHT

VISION CONNECTION
THROUGH THE
TRANSPARENT MATERIAL

THRESHOLD WITH
DIFFERENT HEIGHT

COLLOBRATE
FACILITY

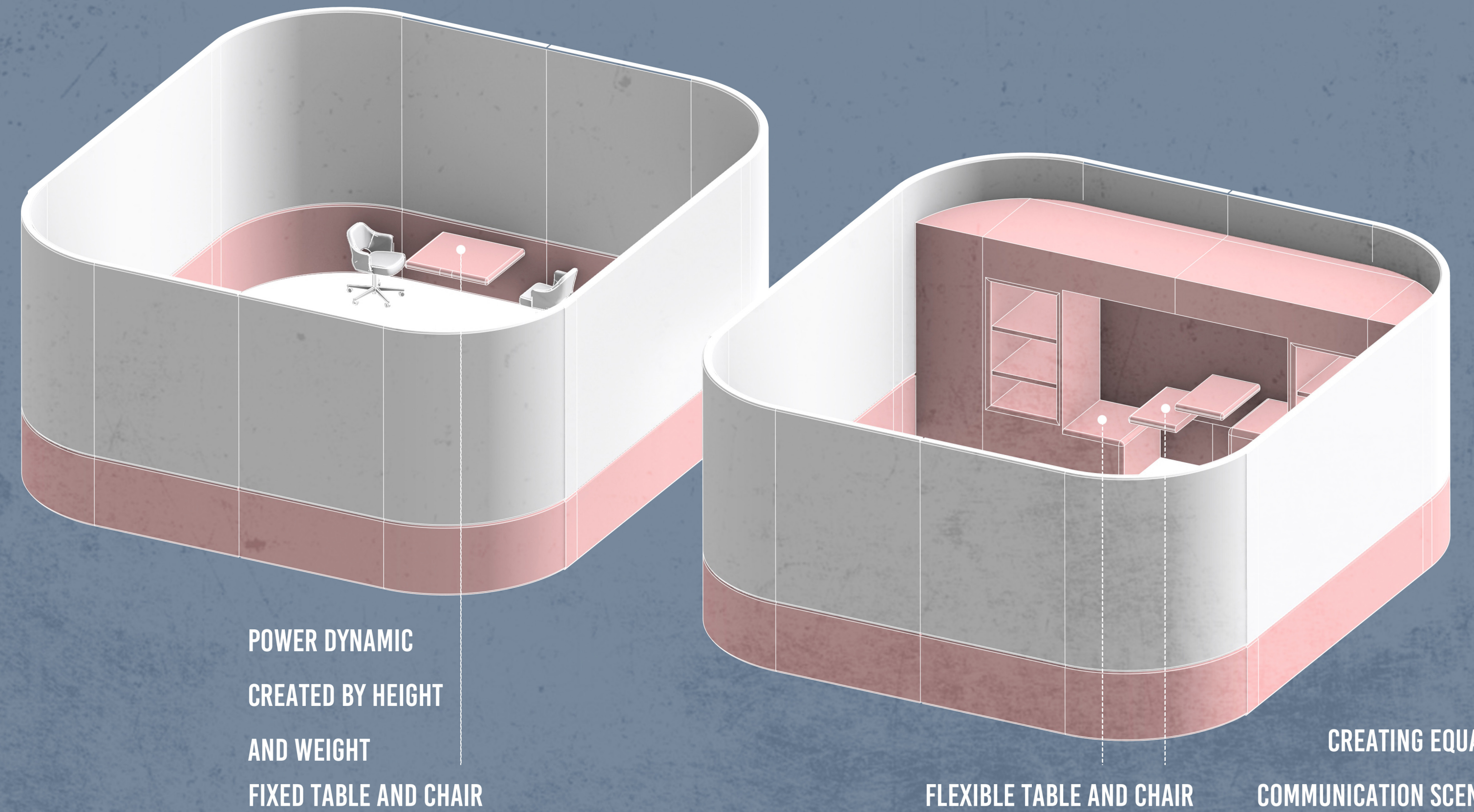
**CAPSULE 04
CO-WORKING STATION**

FULLY CLOSED CLASS ROOM

VISUAL CONNECTION
THOUGH THE HOLE

PARENTS/TEACHER
CO-WORKING AREA

CAPSULE 05
1 TO 1 TUTORIAL STATION

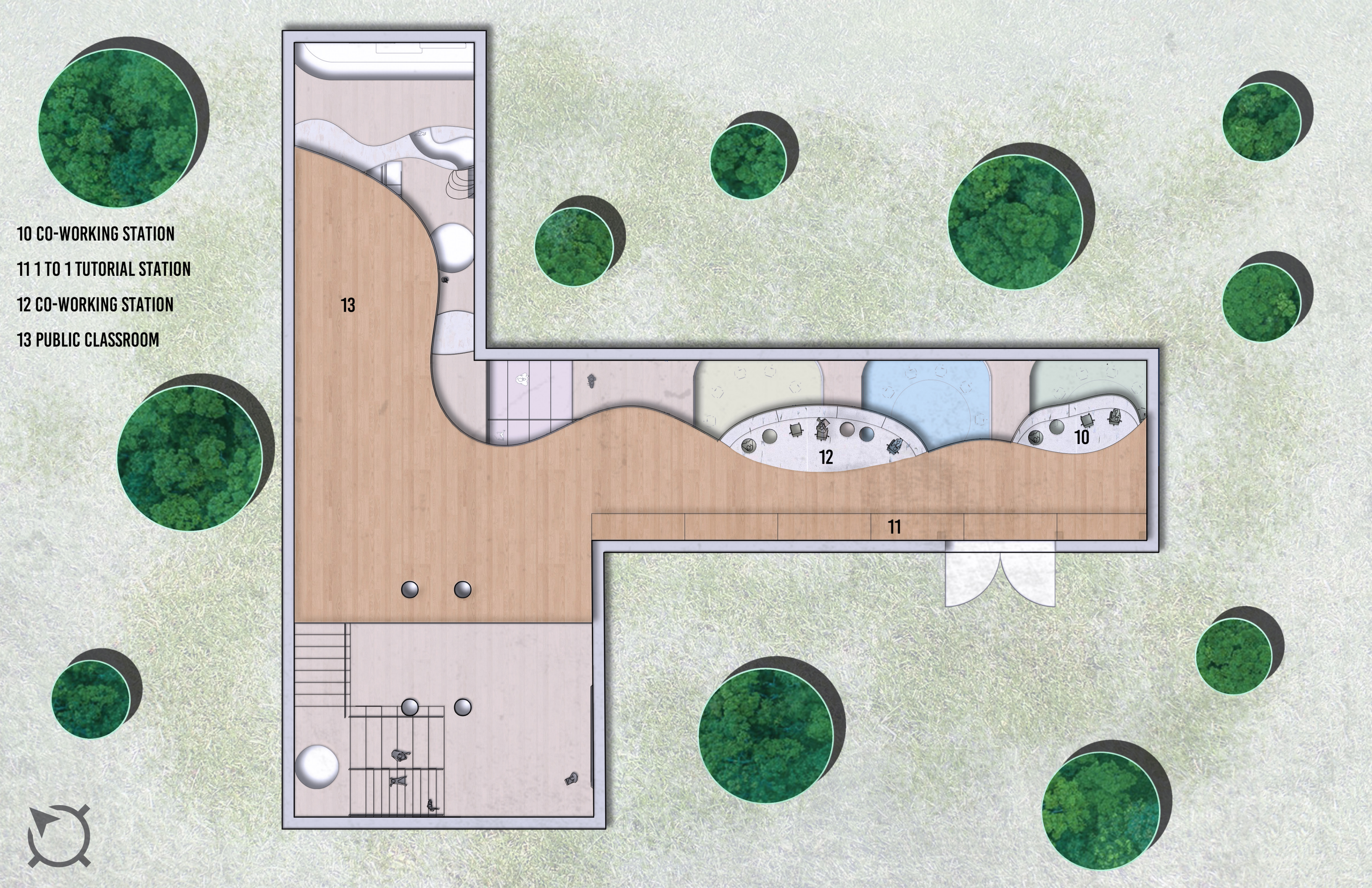


08 FLOORPLAN

1ST FLOOR PLAN



2ND FLOOR PLAN

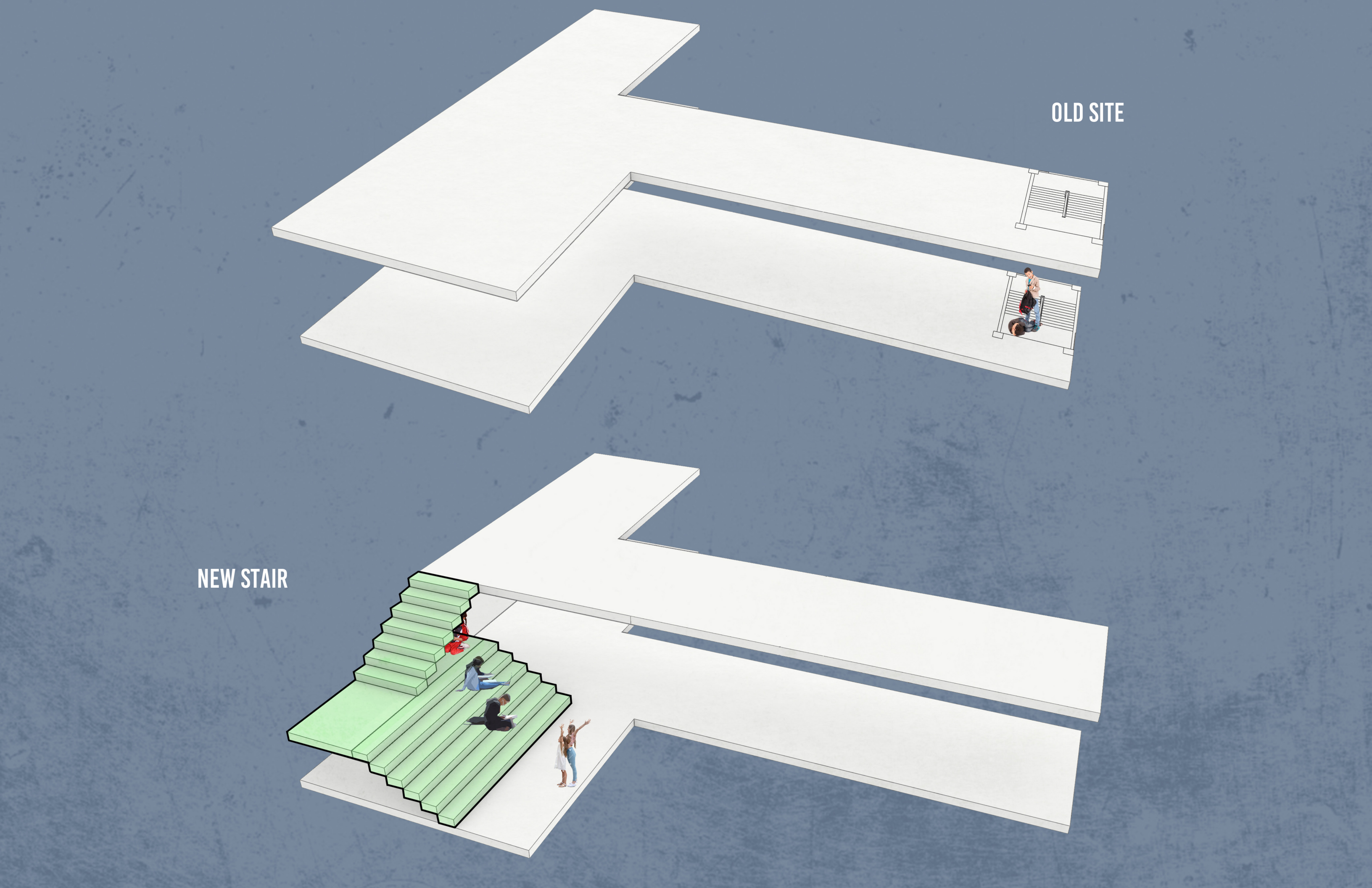


09 CIRCULATION

STAIR UPDATE

NEW STAIR

OLD SITE

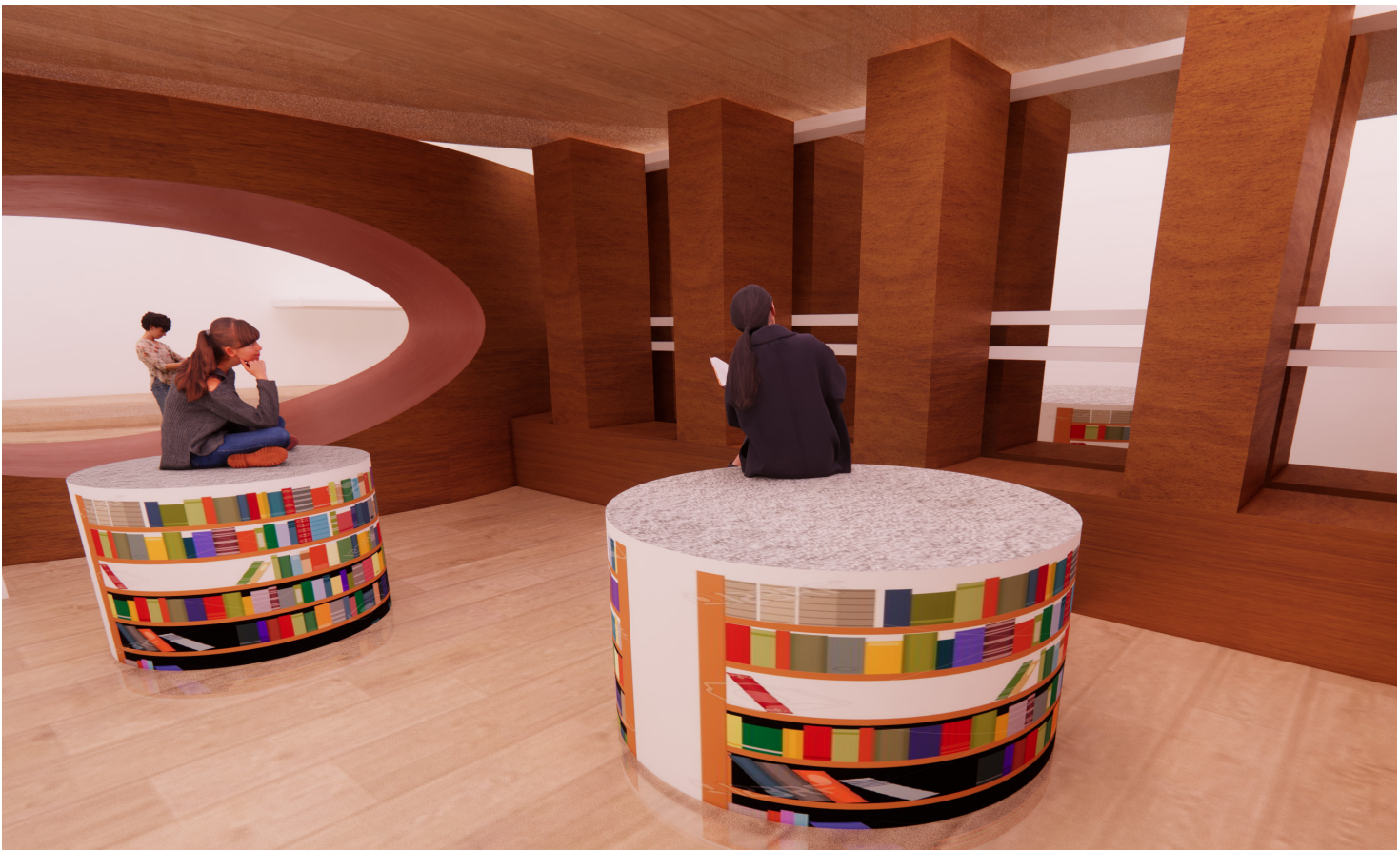


10 CAPSULE ON SITE

CAPSULE 01
ON SITE



CAPSULE 02/03
ON SITE



CAPSULE 04/05
ON SITE



11 SECTION



12 AXONOMETRIC VIEW

