



Interior

Design

Portfolio

/esi We

01 Mutual Exposed 04-37 ... **02**
Office 38-49 ... **03 Hostel** 50-
65 ... **04 Lowline** 66-83 ... **05**
Boundary 84-91 ... **06 Working**
Set 92-101 ... **07 Material** 102-
107... **08 POCKETS** 108-119

MUT. EXPO.

01

OVERSEAS

Economic gains often came with destructive forces on local cultures and environments in a phenomenon known as 'overtourism.' This project proposes a new tourism prototype that encourages the mutual cultural and knowledge exchange between the tourist children and the local left-behind children at a highly visited historical tourist destination.



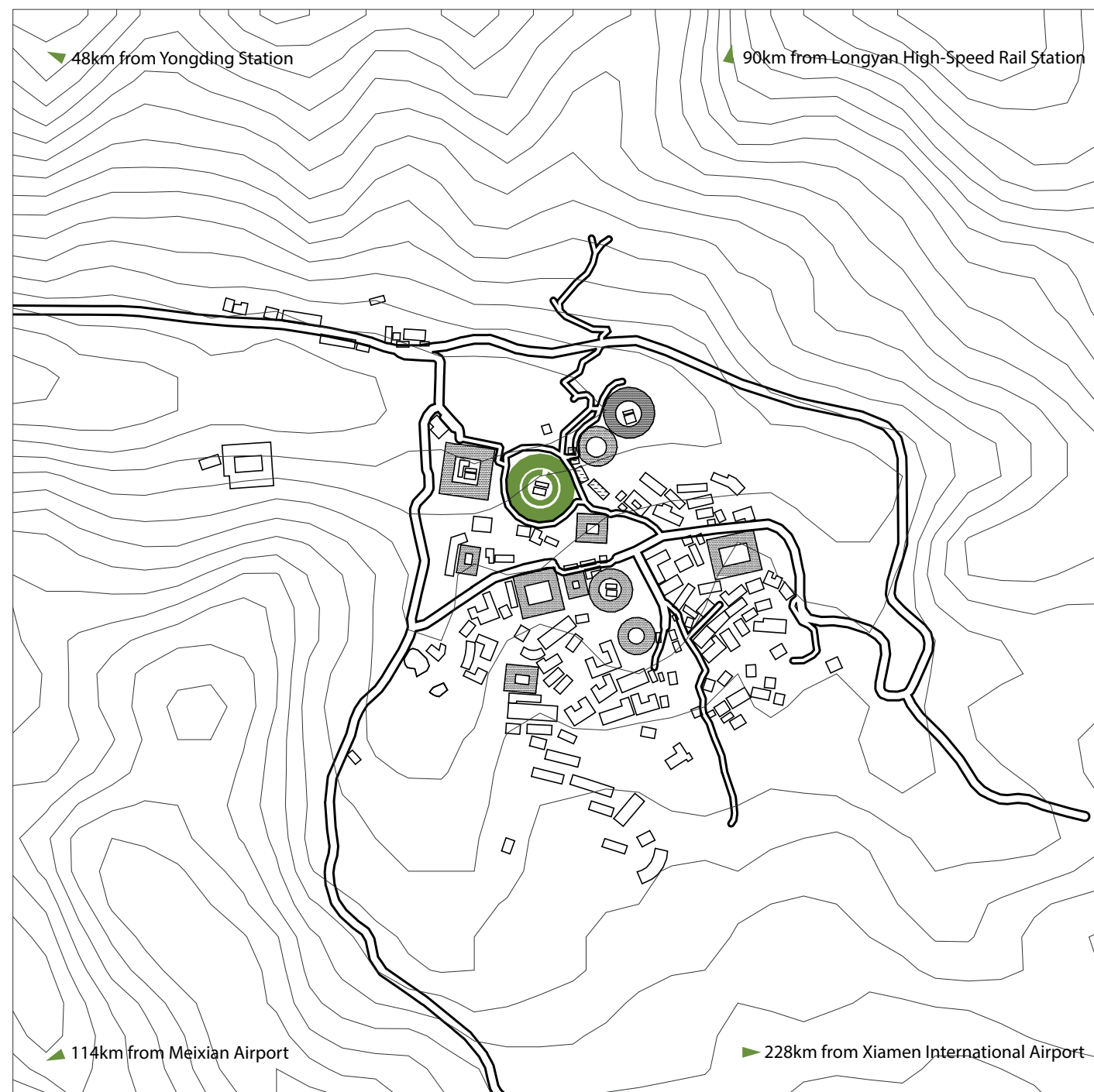
Site Taxonomy



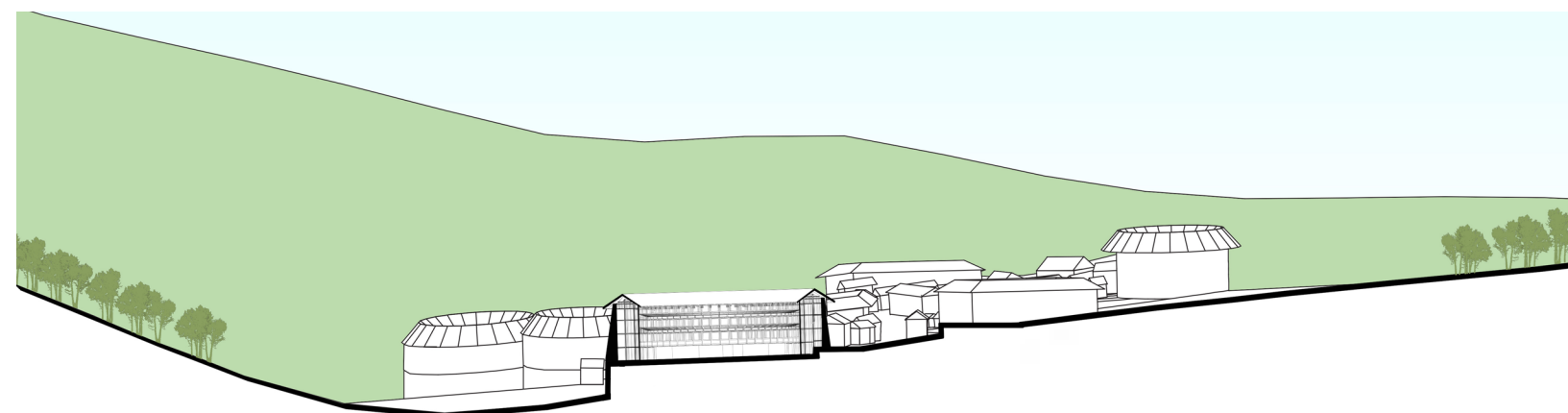
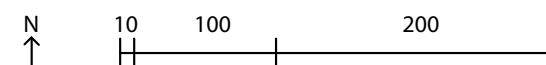
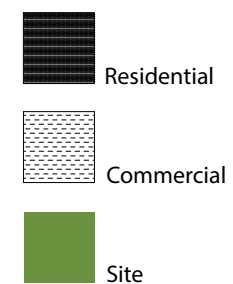
Program Collage Proposal



Chuxi village is surrounded by mountains and is situated among the terraced field terrain. Tulou is typically a large enclosed and fortified structure that was built between the 12th and 20th centuries. The word tulou, means earth building, as the structures are mainly formed by rammed earth, bamboo, wood and other materials.

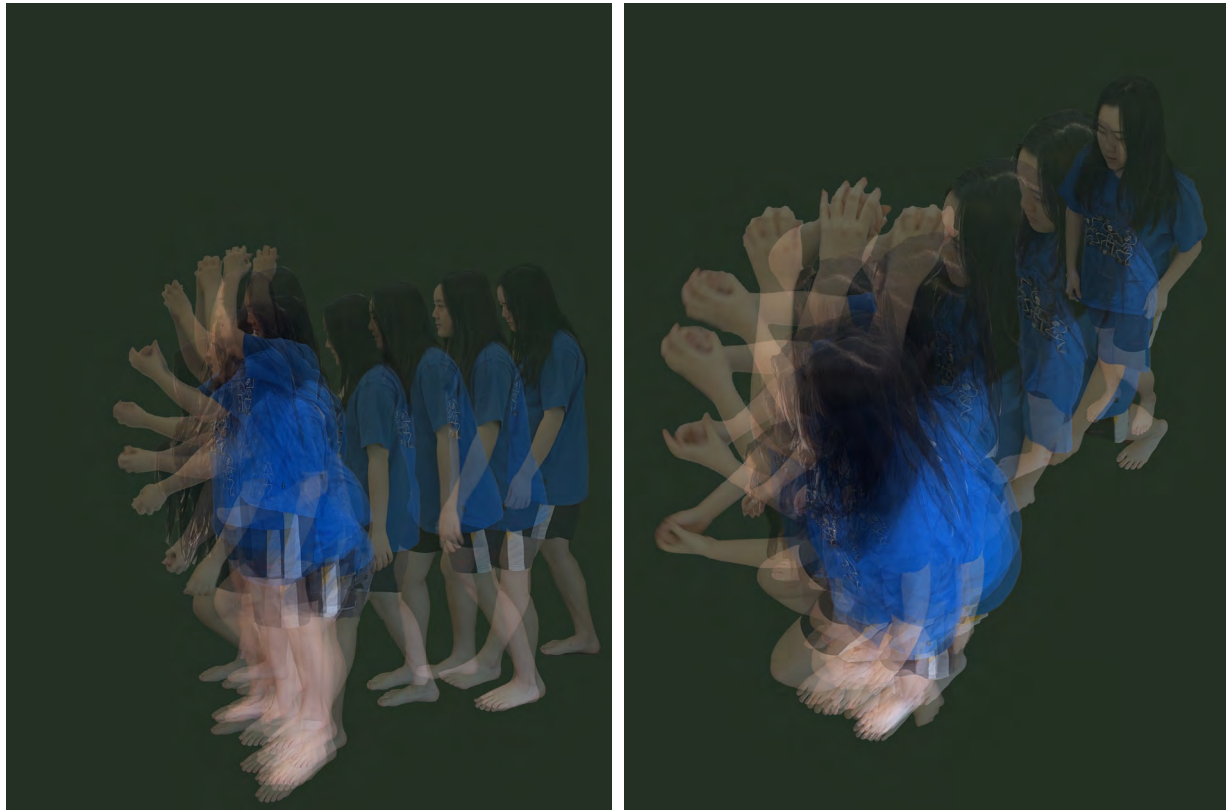


Site Plan



Site Section

Each Tulous was usually occupied by one large family clan of several generations. Water wells, ceremonial halls, bathrooms, wash rooms, were all shared property in tulou. Each smaller family basically occupies one side of the vertical zone of the space. In historical times, the Hakka were regarded as skilled farmers, cultivation was their main source of income.

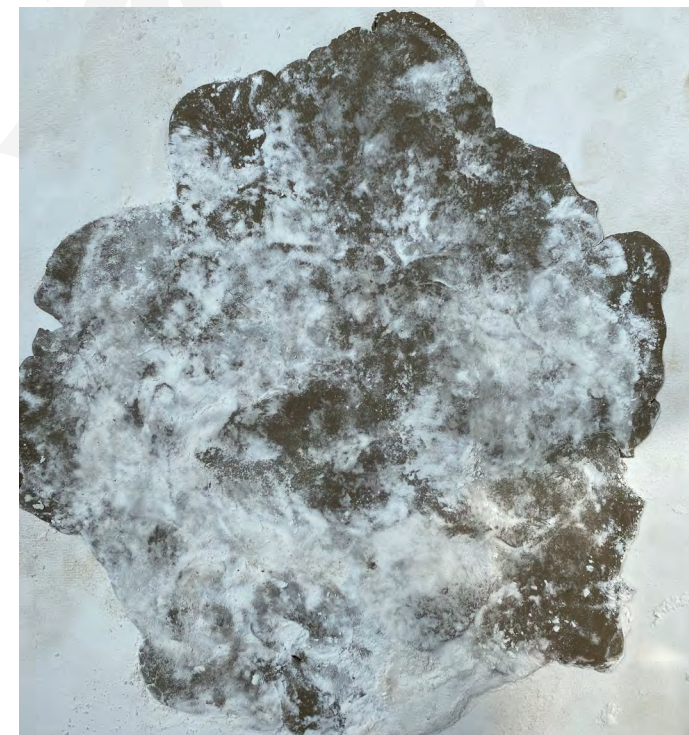


Photomontage of the action of building rammed earth

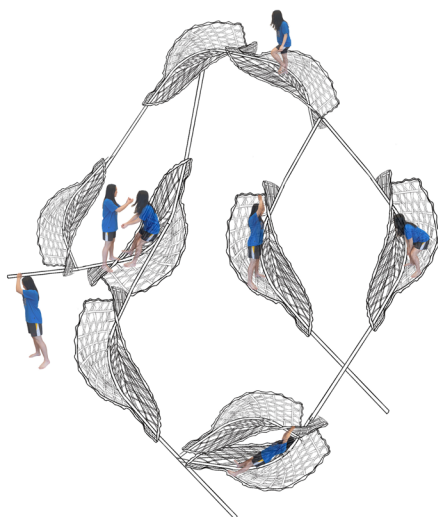
The collage image shows this hands-on activity allows you to physically create a relationship between the earth with your body. Then I experiment with flour and earth. When you pour flour on the earth, it would remain the same but when stepping on it, allows you to transform and combine the flour with the earth. The level of pressure affects the marks and the trace than leaves on the earth.



Diagram the action (of reflection)



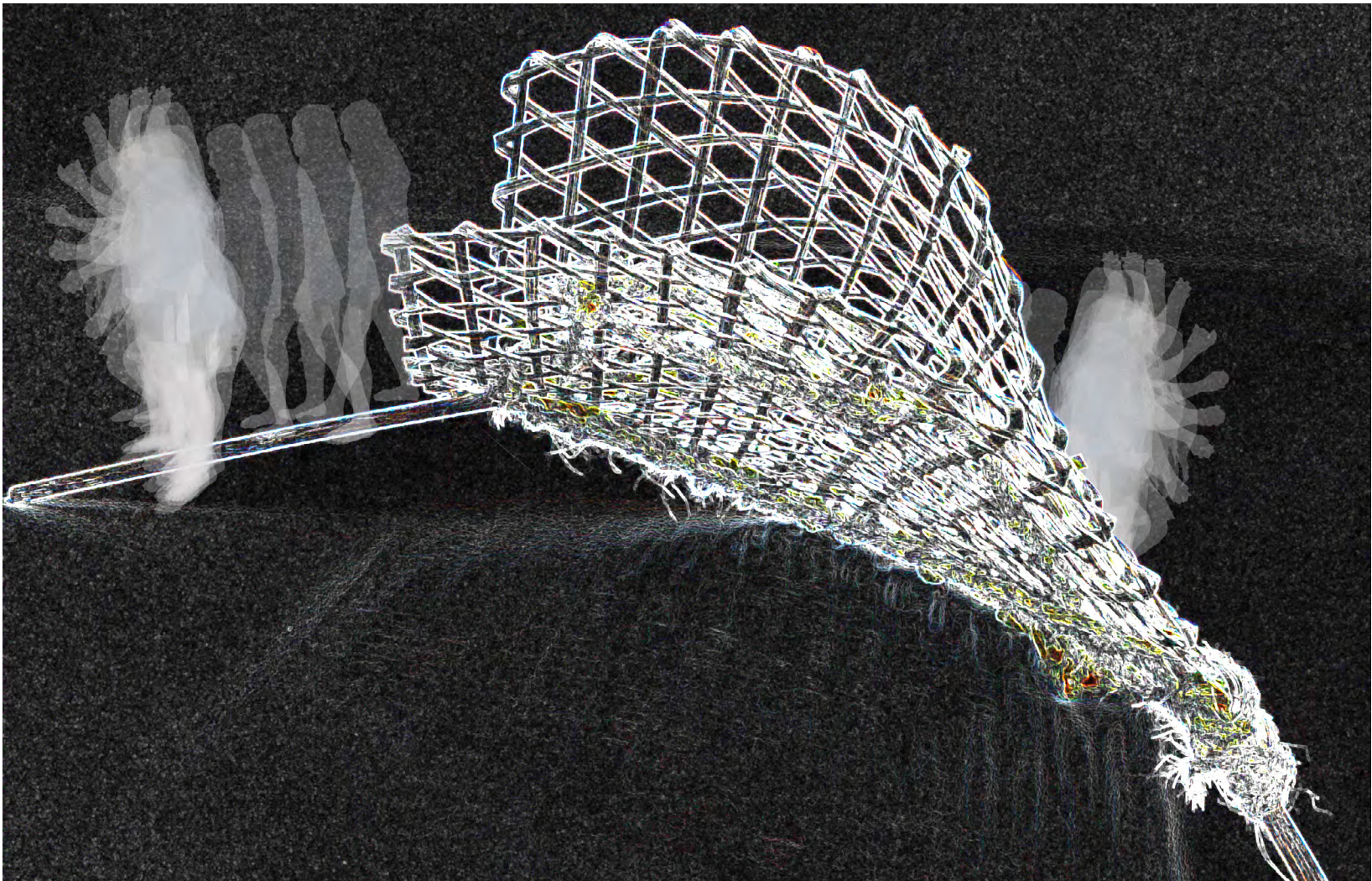
Stepping on earth with flour



Pathway of learning



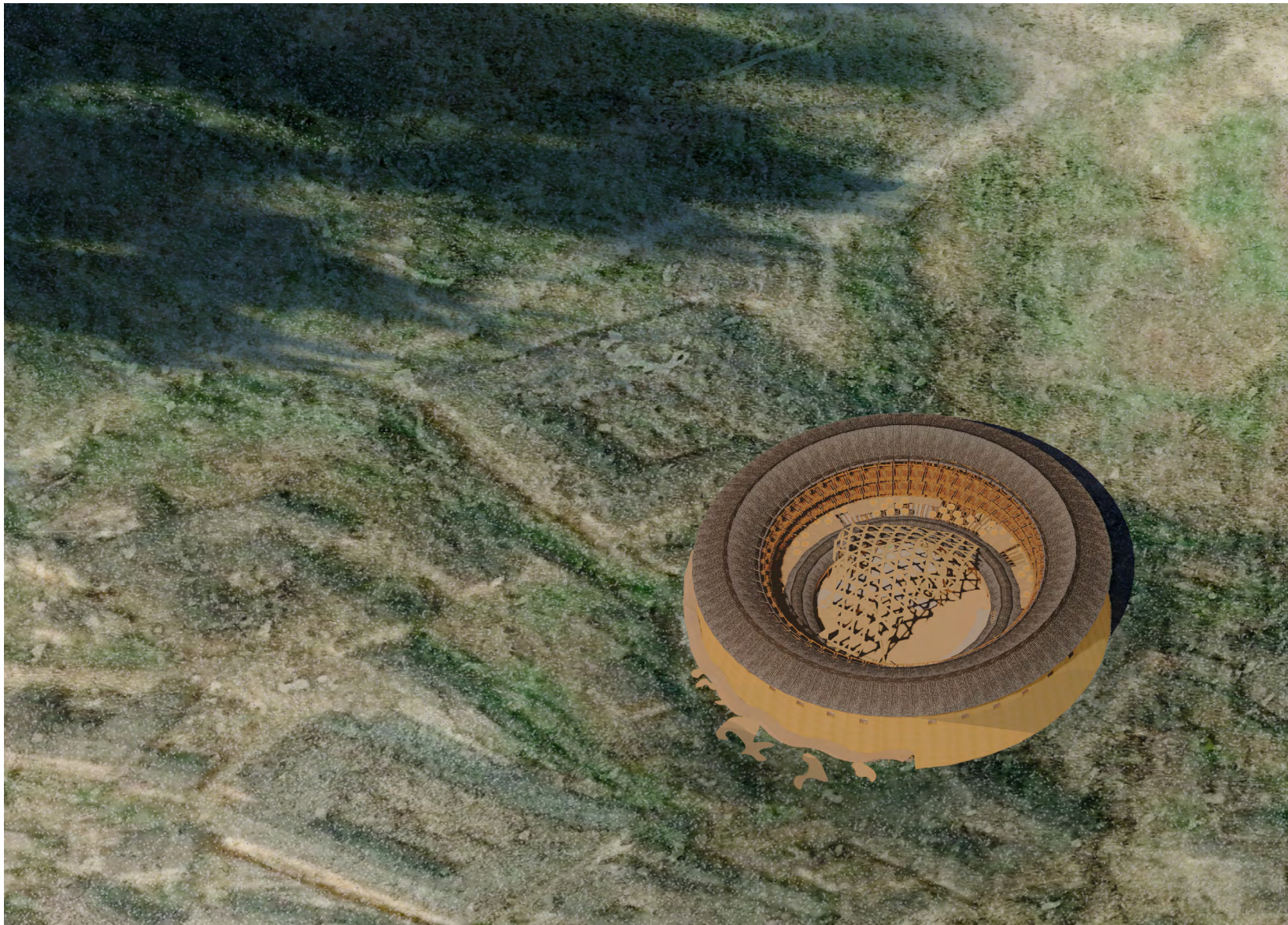
A Bridge/Canopy



A path that bridged the two opposite groups

纵横交错

I developed a physical model, I carried the idea of using two very different materials that are also traditional material for my site and then combined them with the help of a third material. The wood strick and the braided bamboo is attached and bended with the strength of the rope.

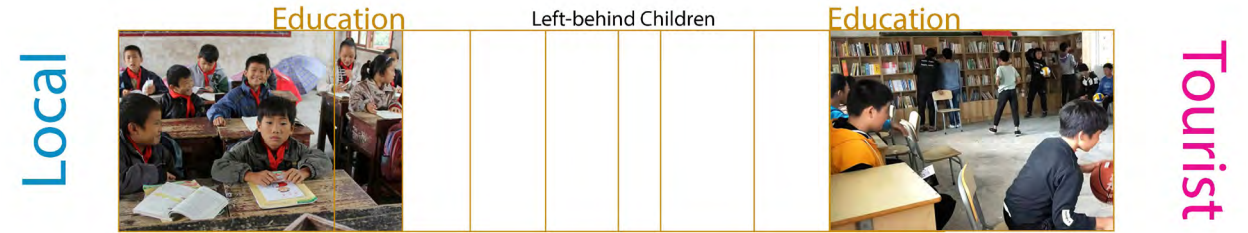


Site

As in China, a lot of children in these villages live with the elder at home while their parents are working far away in larger cities. They are being called the left-behind children. Many of them often are not very careful taking care of whether physically or mentally. This leads me to be more focused on a learning environment that can also be beneficial to the local children.

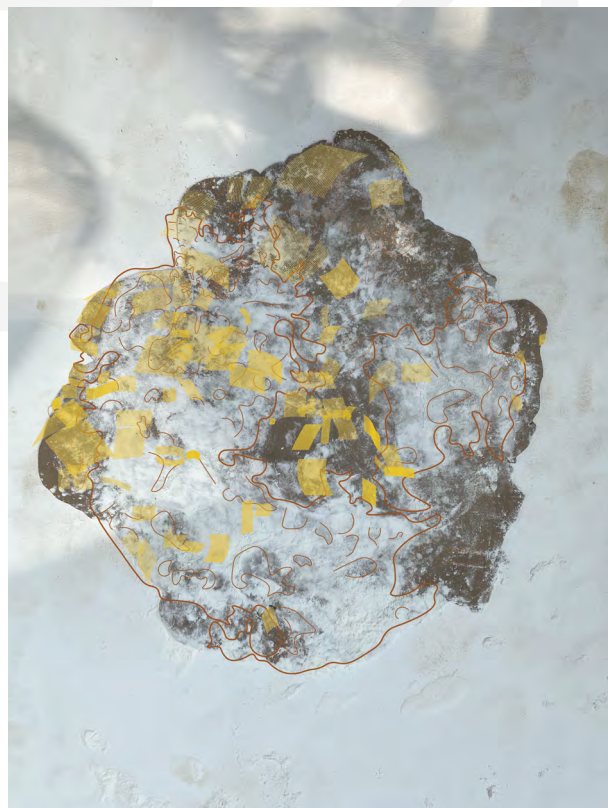


Classroom Types

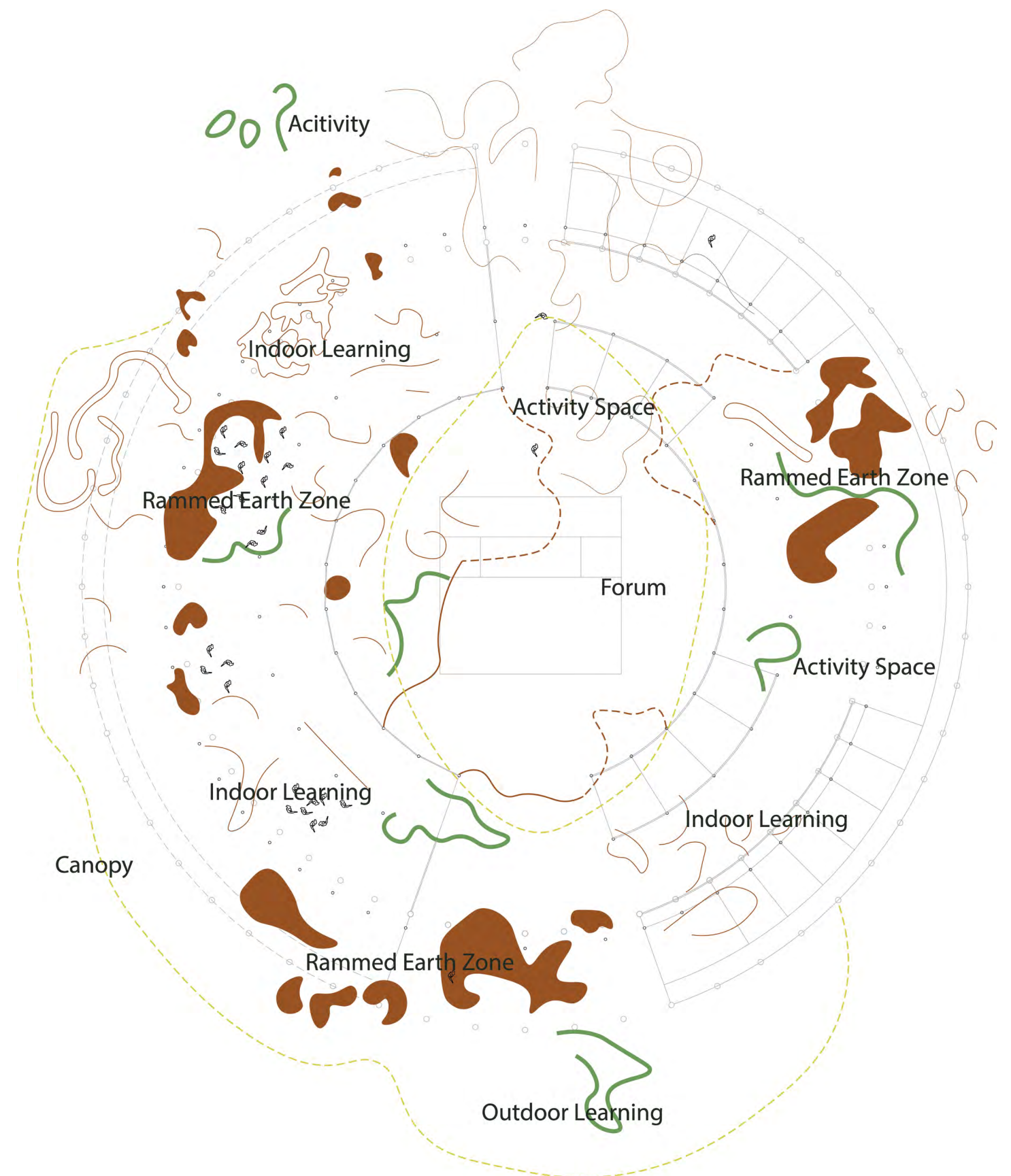


Program User

For my initial conceptual planning I traced the lines and mark of the stepping on earth exploration. The different density that forms the different space in the earth composed an interesting similar zone with my site. From there I used it as a tool to transform the space in my plan where I utilized the lines to change the level of the ground to form different learning environments.

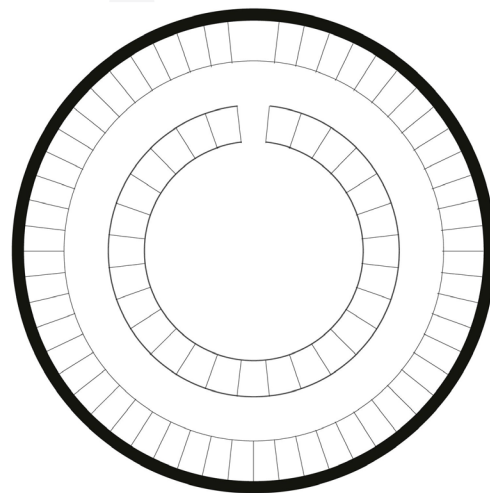


Tracing the Marks

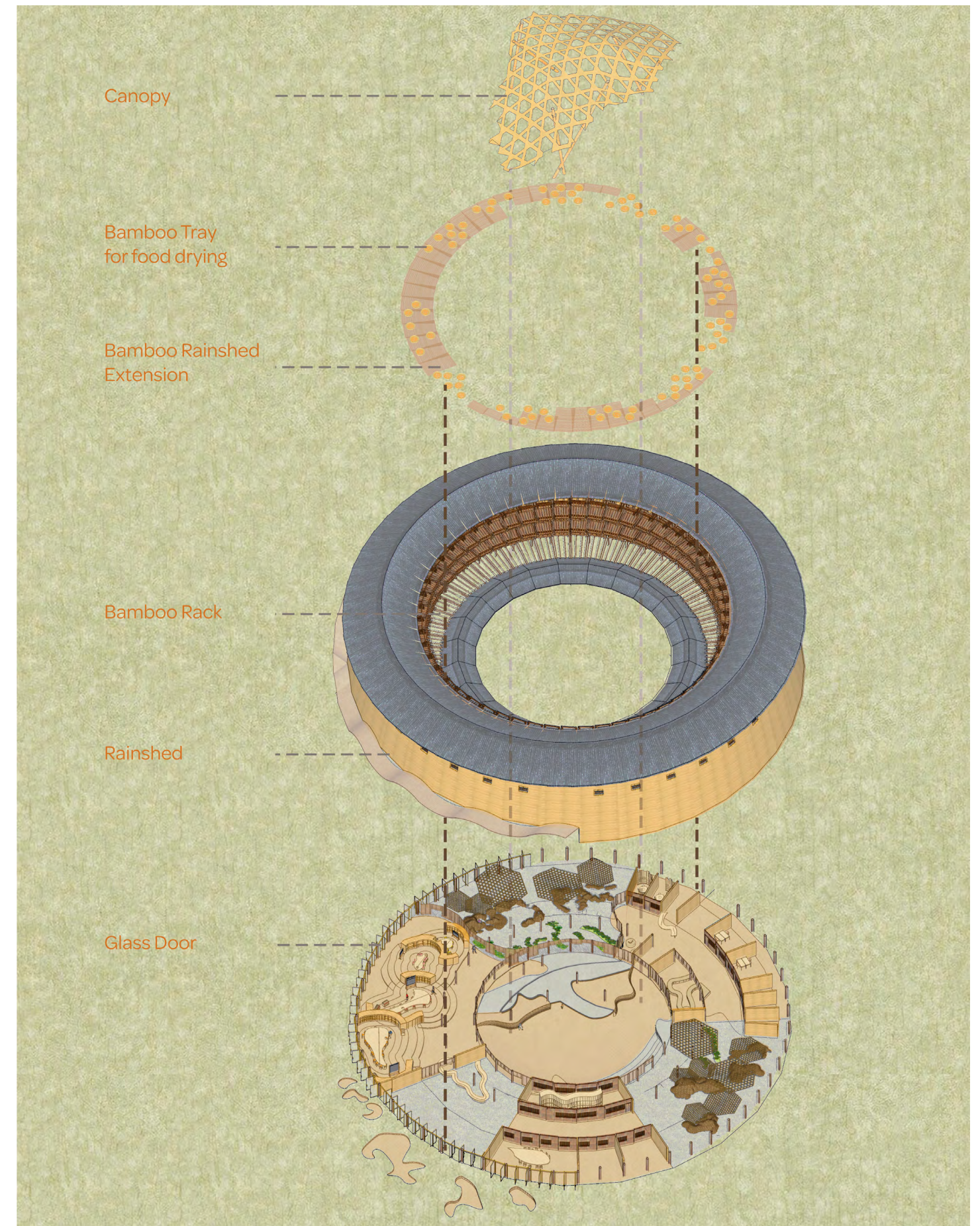


Conceptual Program Plan

I open up the walls to blurry the boundary of the interior with the exterior. The two rings are opened up and connected bamboo racks with extension rainshed on the top. The central forum is covered with the Canopy. The racks can also be used for food drying during harvest season in the fall.



Site Plan



Exploded Axon



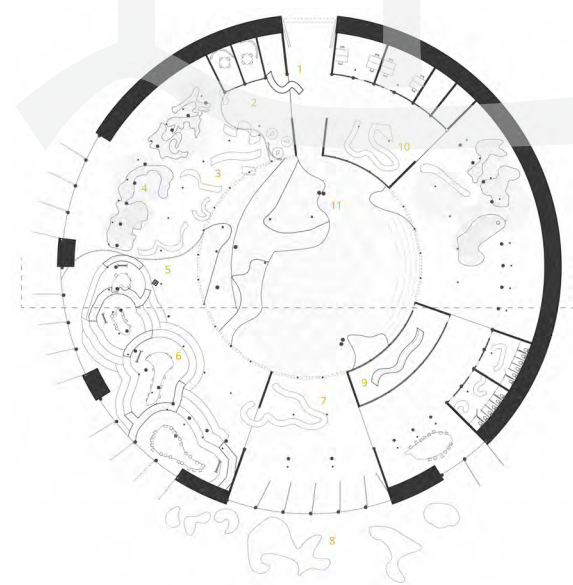
Plan

I have the idea of creating a continuous pathway of learning that bridges and encourages the two different users to engage.

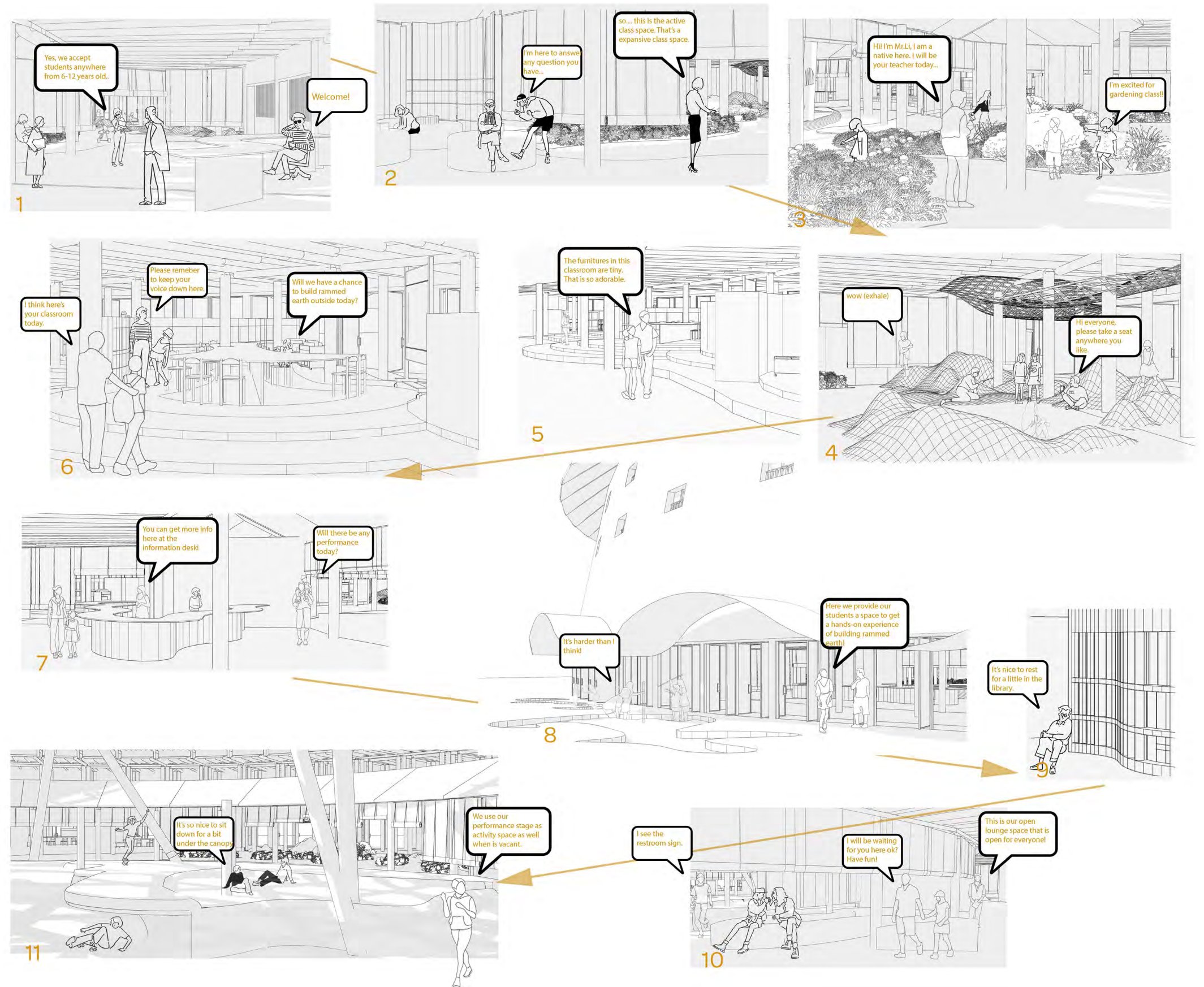


Looking over the forum

A storyboard to help explain a day in the life of different users here.



Plan



A Day In the Life of

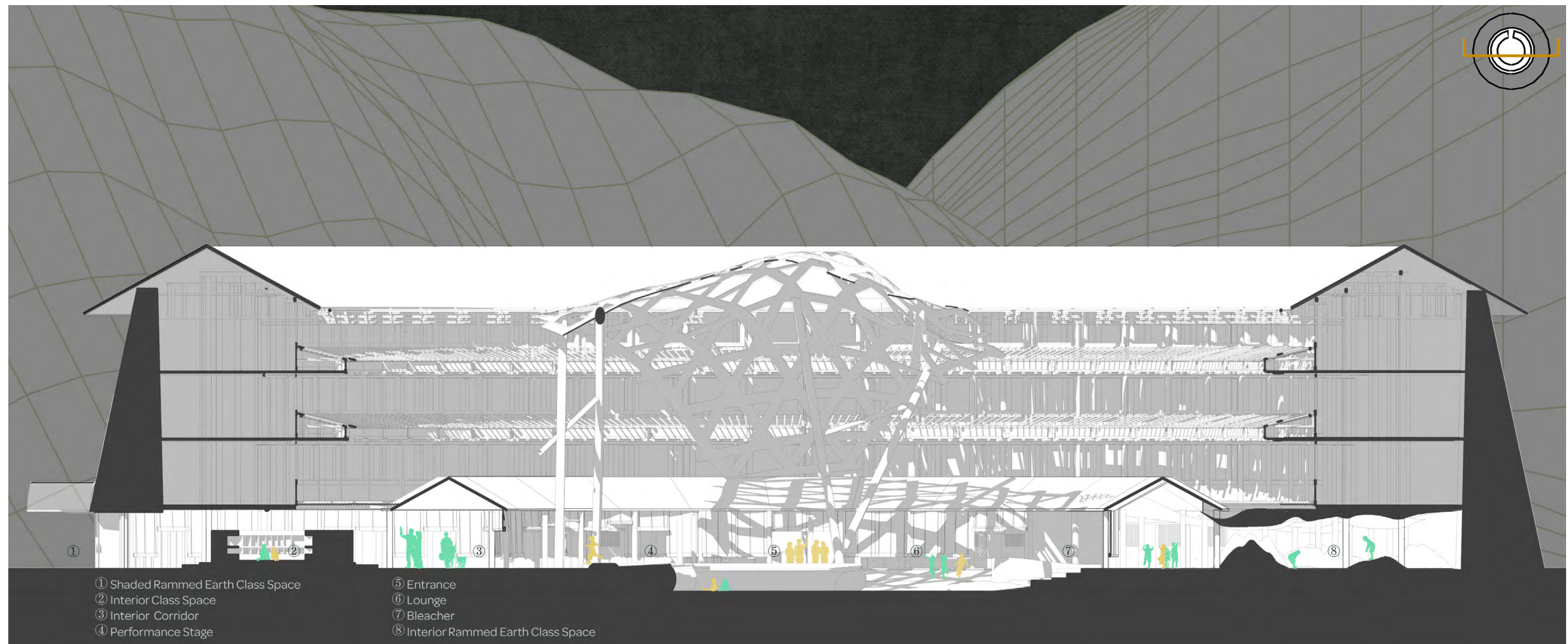


Axonometric View



Mobile Storage Furnitures

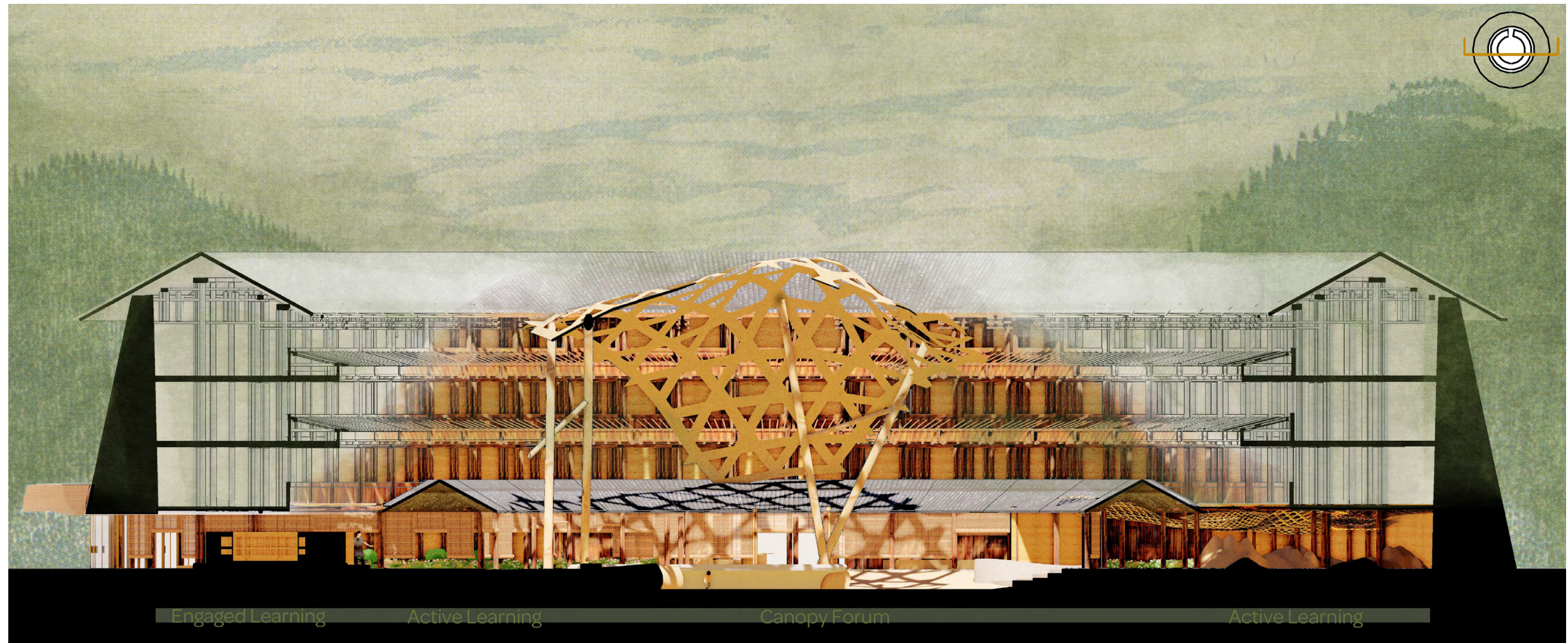
This axon here shows the different ground levels environment that encourage different activity, the mount where there is more for the active zone, the engaged zone classrooms are raised up a couple steps, the enclosed calm space, the carved central forum space. The changing in floor materials also emphasize the shift from different zones.



Section

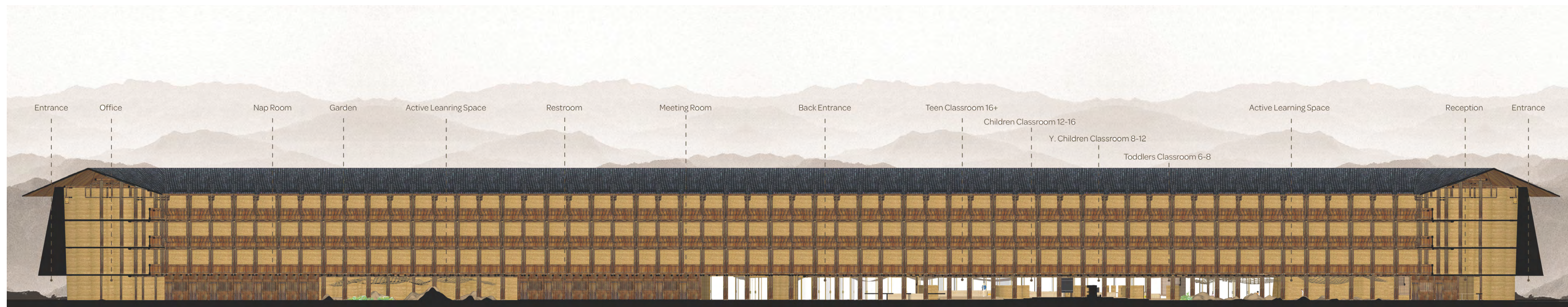
波属云委

This section cut in the center looking north shows a better understanding of the changes in ground.



Section

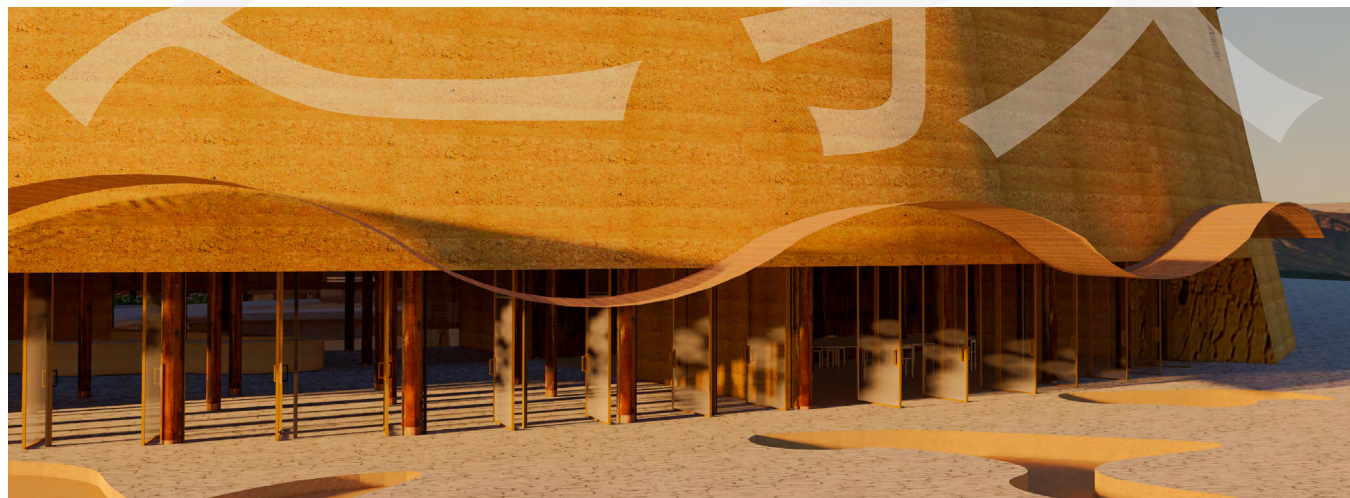
From the shaded exterior class space, to the interior class space, to the performance stage of the forum that is carved into the ground to the mount, the active class space.



Panorama section

This is a 360 degree section of my project. It shows a path of learning from entrance to the active learning space, that to the classroom space that is divided by different age range, then to the back entrance where open to an outdoor class space, then going into more private meeting space, restroom, nap room, the office and back to the entrance.

Here shows the renderings of the garden class space and the mount class space. These spaces of the mounts and the gardens form and enforce a center gathering space in between.



Shaded Outdoor Class Space



Garden Class Space



Mount Class Space



Classroom Space

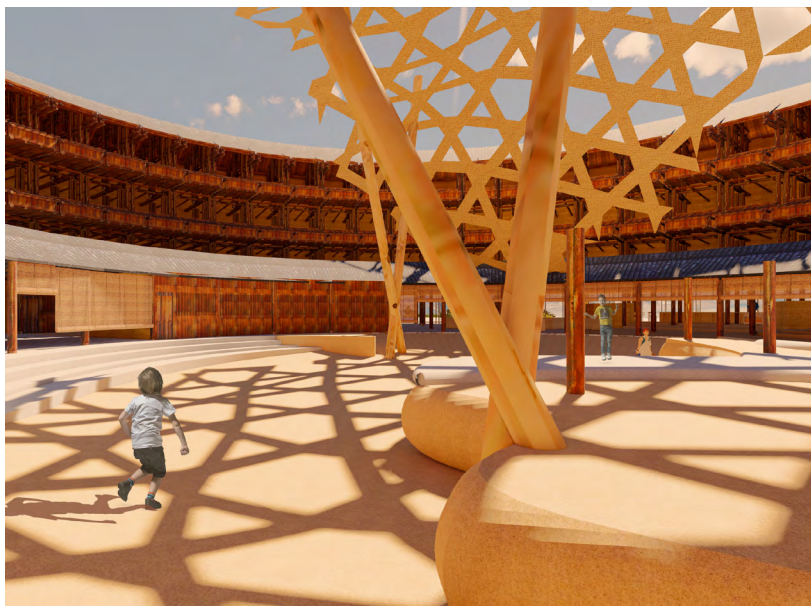


The Forum

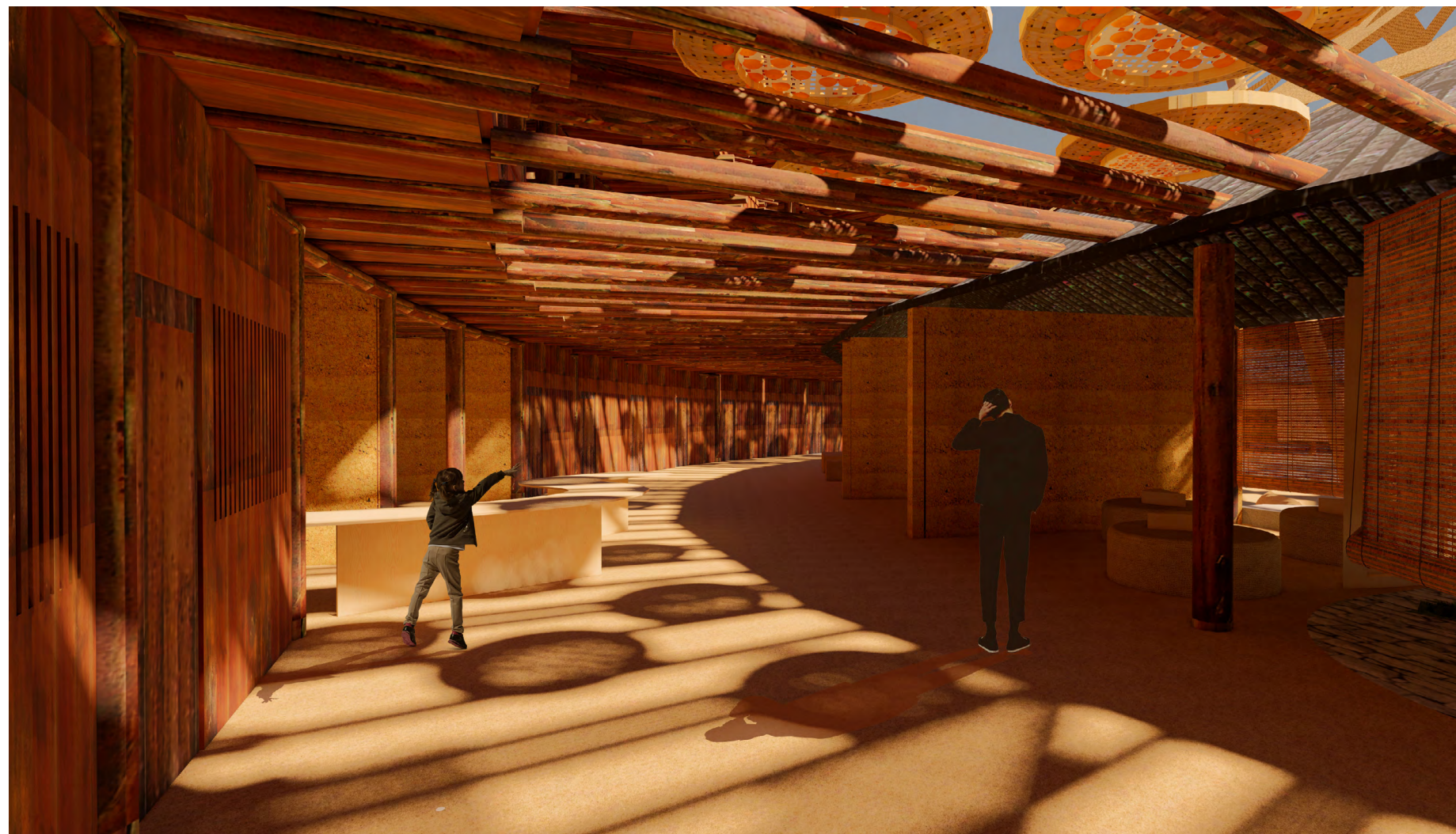
I want to use these moveable storage shelves that can be easily rearranged in this open plan space.



Inside the Classroom



The Forum

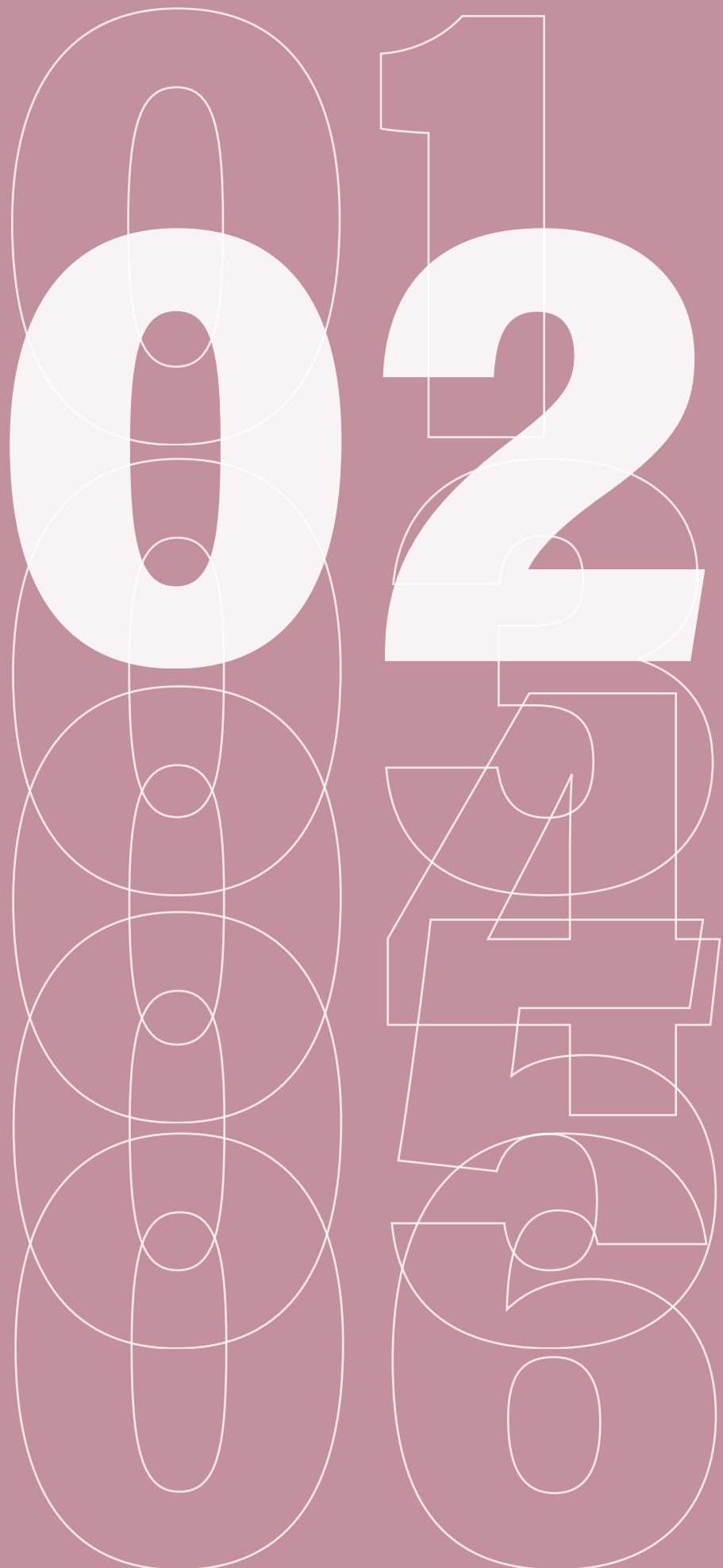


The Racks

有风有伴

Here's how the two rings are connected and when there's food drying happening during harvest season they can use the rack on the top. It creates unique shadows and atmosphere to the space.

OFFICE



This office project is a continuation of the curtain exploration. The project expands on three physical models that focused on work, rest and educate. Each has its own characteristic together creating a space that emphasizes on vertical linear elements.



Open space working area



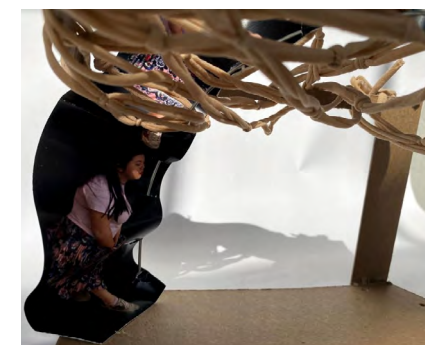
This office project expands on three physical models that focused on work, rest and educate. Each have it's own characteristic together create a space that emphasized vertical linear elements. Here I'm showing one of the perspectives of the open space working area. The table is hanging from the beam but also is attached to the ground.



The plan is being divided into three zones horizontally. The center part is a more solid zone as space is divided into an enclosed room. You can travel through this solid zone with three hallways that would transport you into the open space.



Work

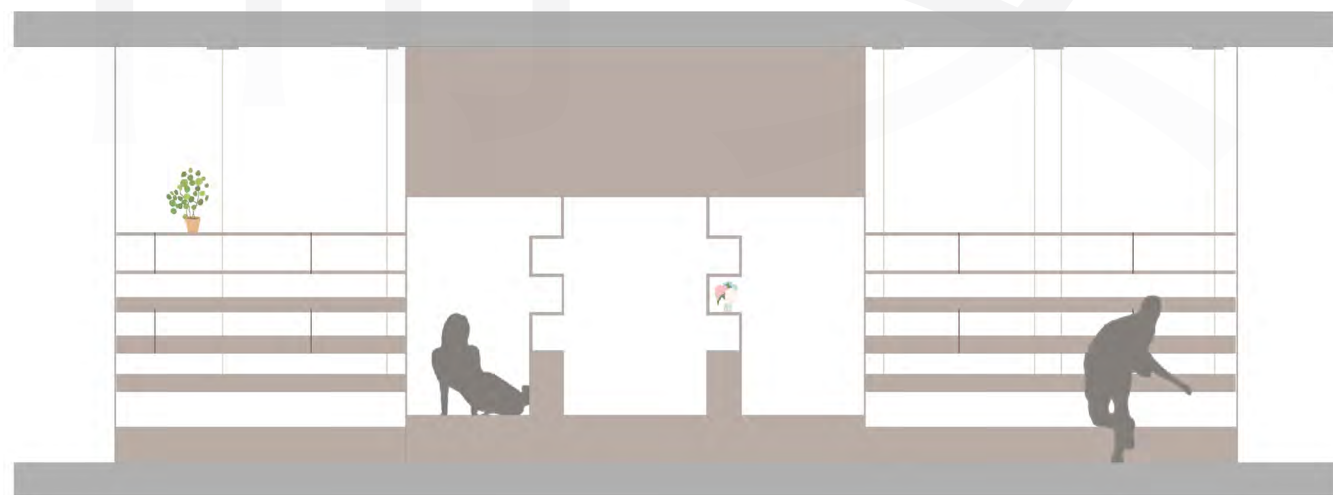


Rest



Educate

Looking at the shelves near the entrance. You will notice how some of the beams turn into a drop lighting when they hit the wall. The shelves at the lower level have a depth to prevent things from falling down as its hanging shelves. Also, you can see the more compressed hallway here with the wood wrapping around the whole space.



Section of resting zone



Hallway



Semi-private gathering space



Offices



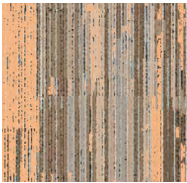
能上
能下



Fabric



Wood



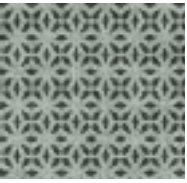
Carpet



Stone



Concrete



Fabric



Hallway



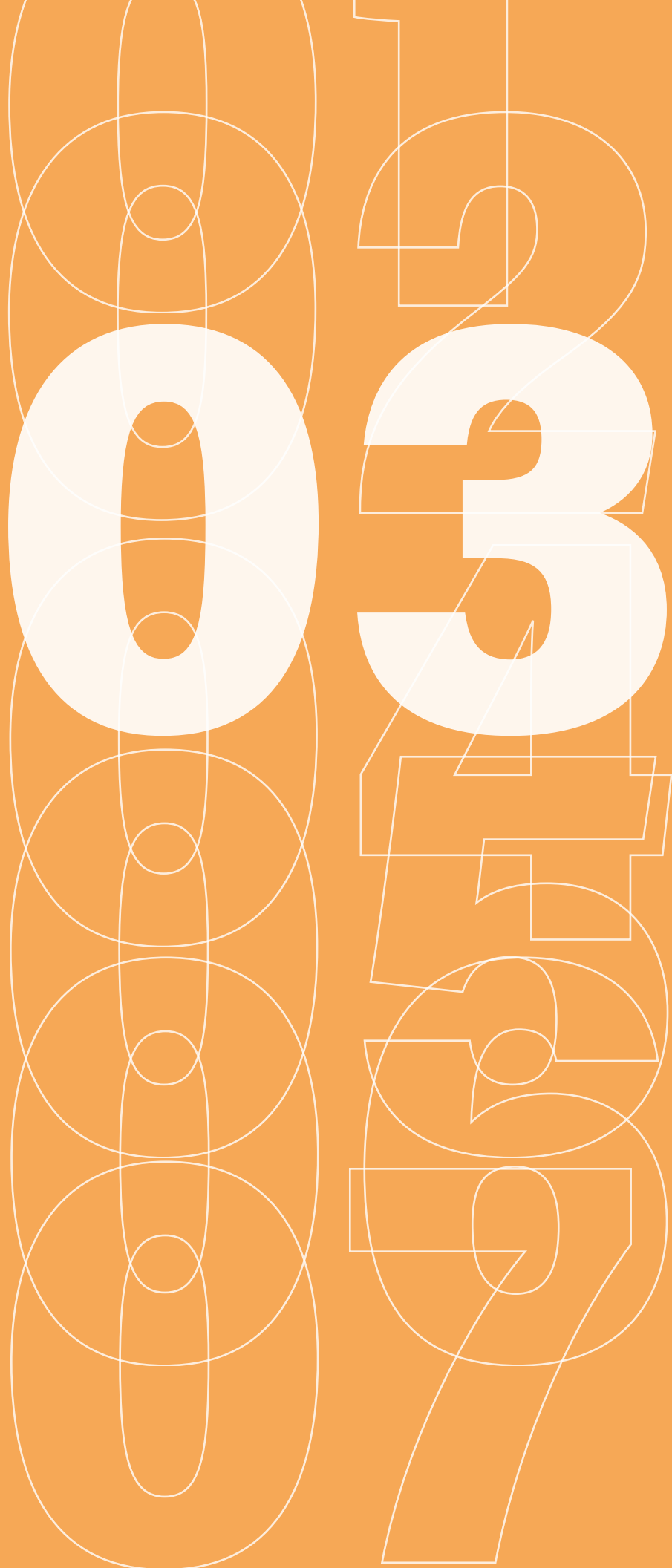
Section looking at different work zone



寓教于乐

The semi-private gathering space. This section is cut on of the main hallways in the space. Looking at the hanging shelves, the built-in seating, the semi-private meeting area, the high table area and also the open working space area.

HOSTEL



Hostel in Venice is a group project where we take into consideration of the current crisis that Venice holds. Venice is in need for creative design strategy for the preservation of Venice's tangible heritage.

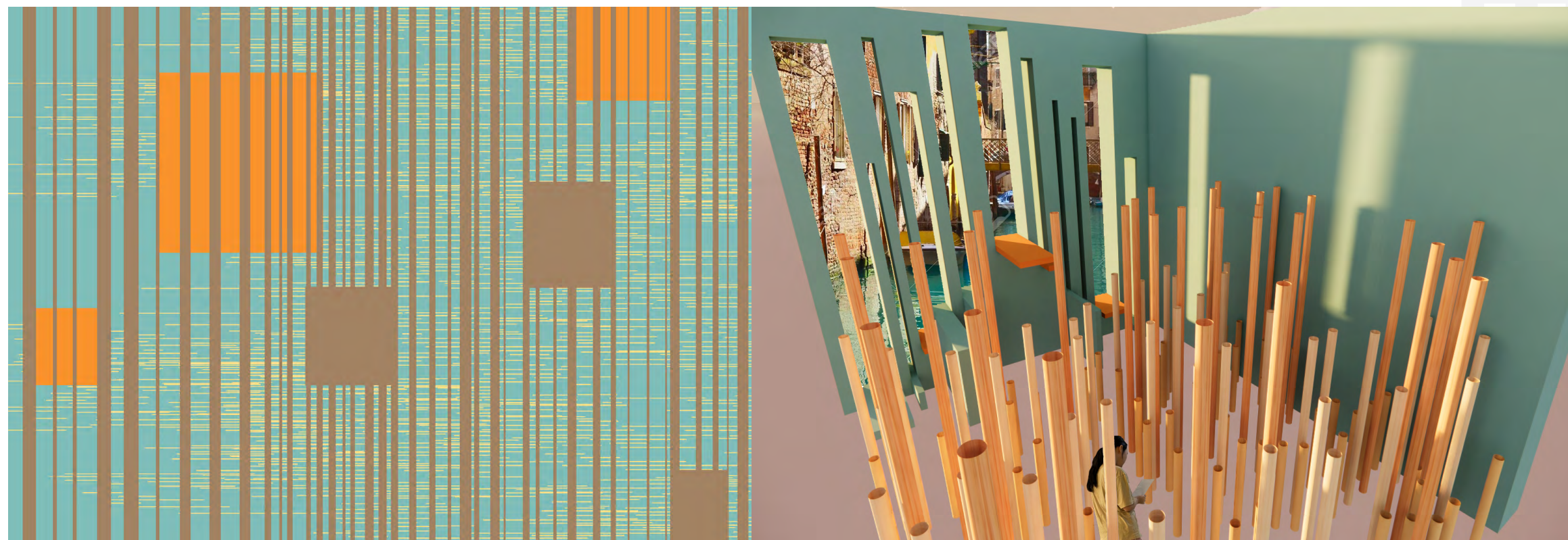


Facade



Program: LIVE

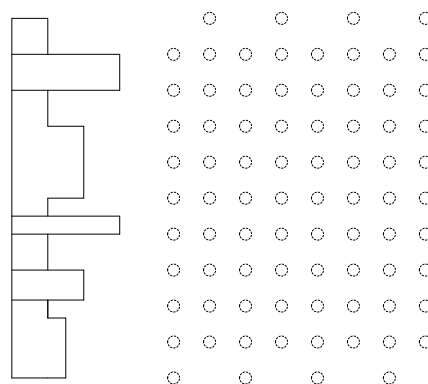
We proposed a hostel that would not only provide a sustainable living space for the tourist but also include programs that can positively impacts the tourist industry in Venice.



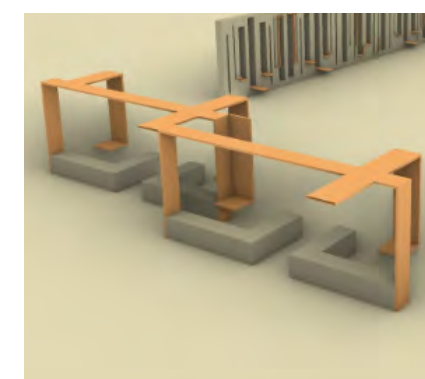
Program Diagram

Program Model

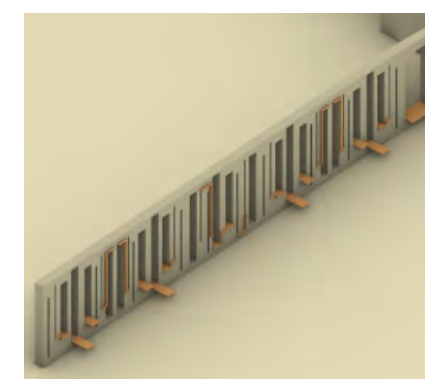
Each group member develop the following programmatic hostel components: reception/ lounge, dining area/kitchen, dormitory. I was in charge of developing the Live and the Retail program where I was focusing on the reception and lounge areas.



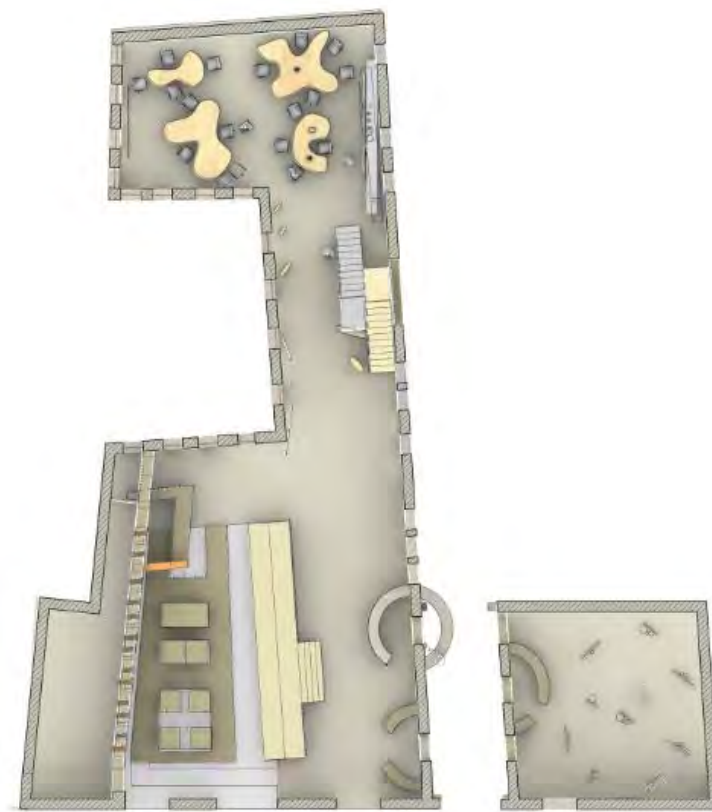
Live Diagram



Lounge



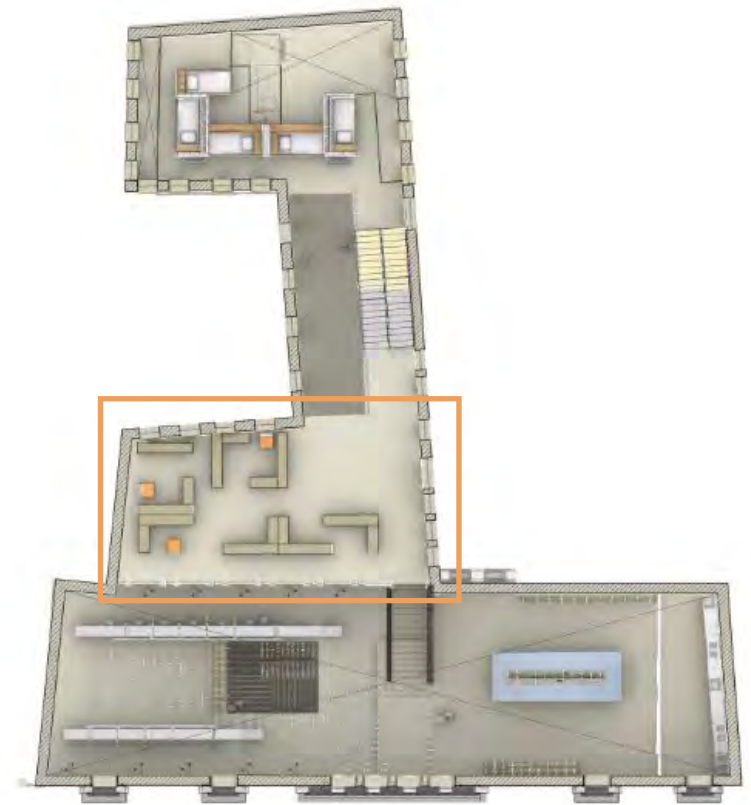
Partition



1st Floor



2nd Floor



4th Floor

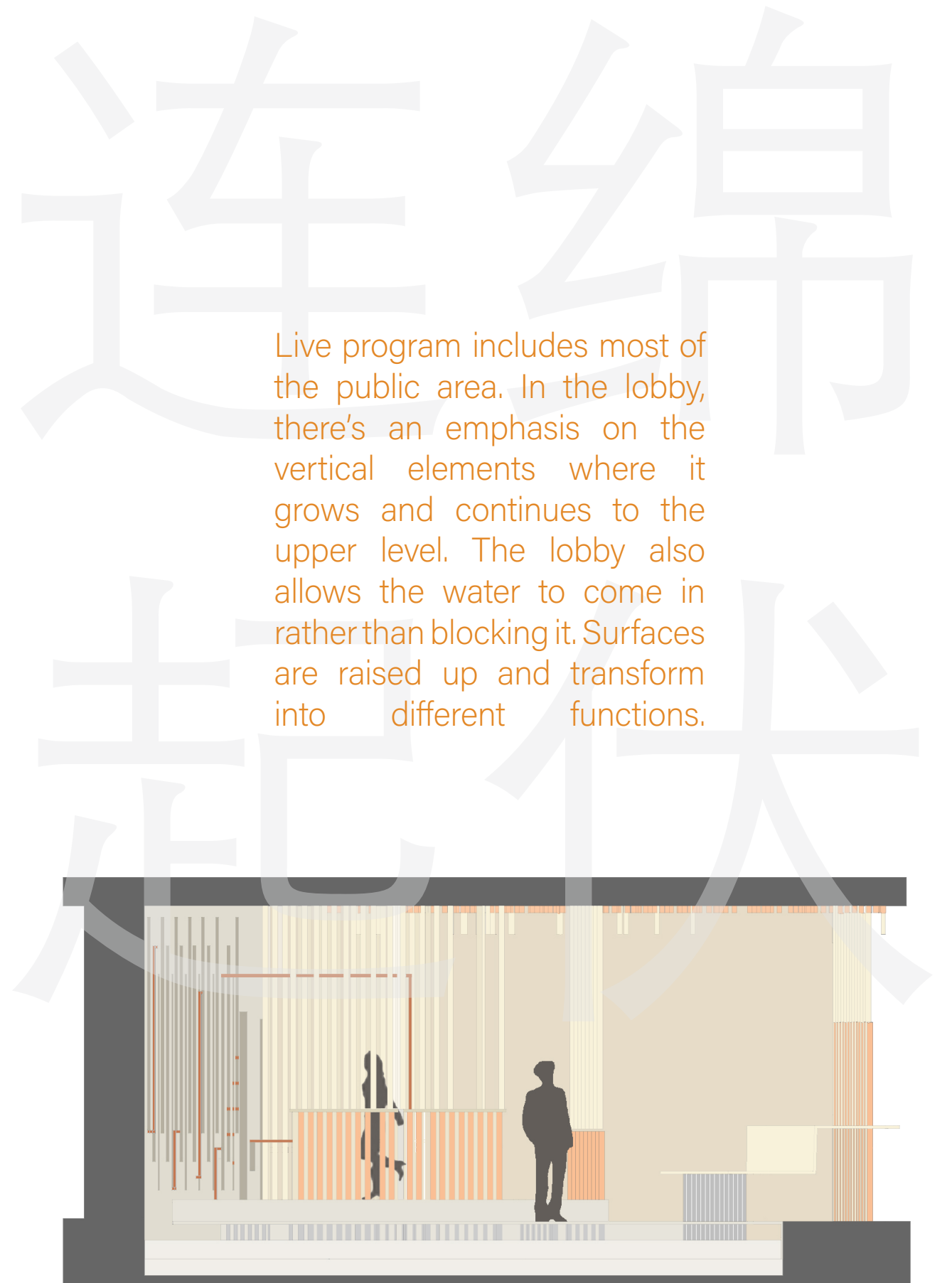
The site for our project has an odd shape and is located right next to the Unesco Venice office. Through our design progress, we see the narrow part in the center of the building as a bridge that allows connection from the front zone to the back zone.



Lobby



Lobby seating area



The stairs create an interesting circulation to the project. Rather than taking you directly to each floor. The double stairs lead you to different areas of the space. You might need to access a secondary circulation to move through the space.



Main stairs





Community gathering plaza



Lobby Hallway

Venice is in urgent need of a sustainable cultural tourism policy and better tourism management that considers the wellbeing of the local community. Our project focuses not only on the environment but also the people.



Lounge seatings



Gallery

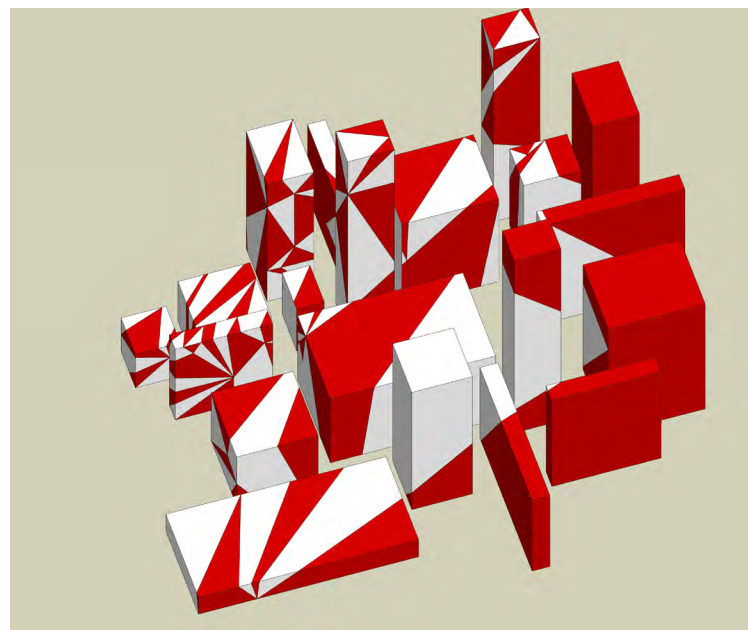
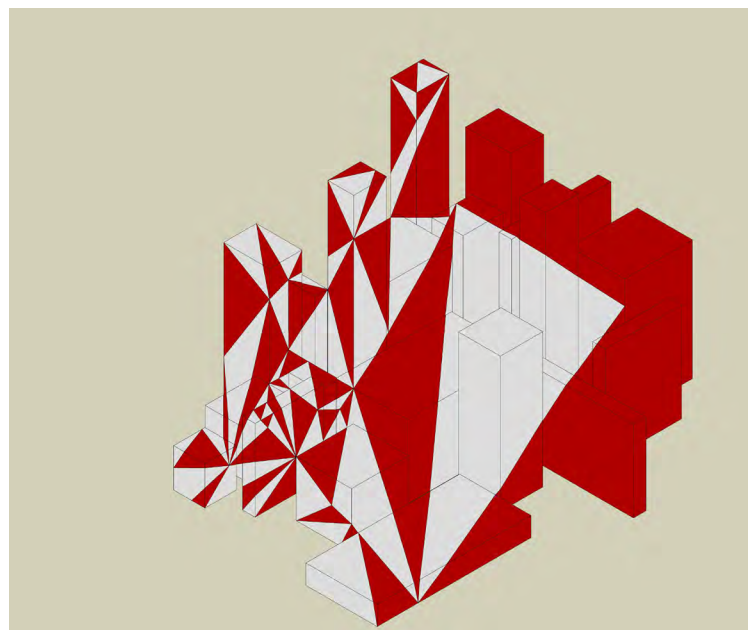
且不
给赏

This hostel also includes bubble tea shop & Gallery space. These programs help explore a much wider range of users. Not only the tourists can come stay at the hostel, locals are also welcome to explore and exchange.

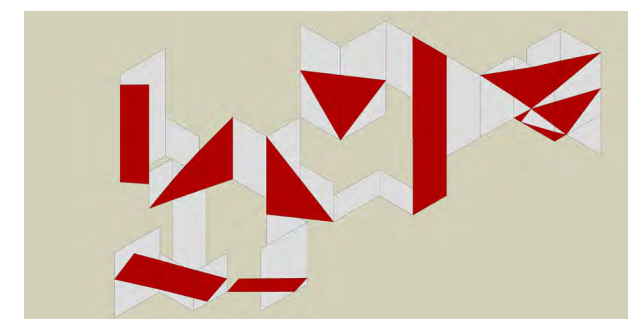
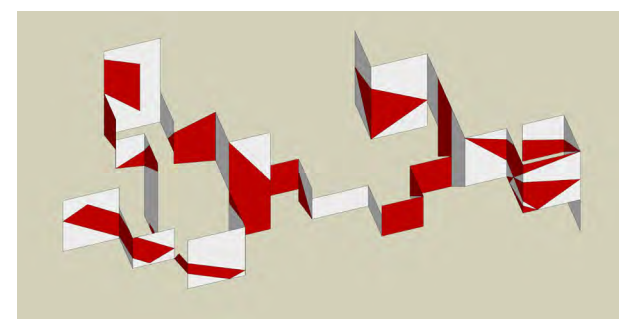
LOWLINE



Exploring the boundary of maze. For this project, I choose the idea of a maze as a boundary. When you are in a maze, even though you know that there's a way out you could never really see it if you just stand still at a point.



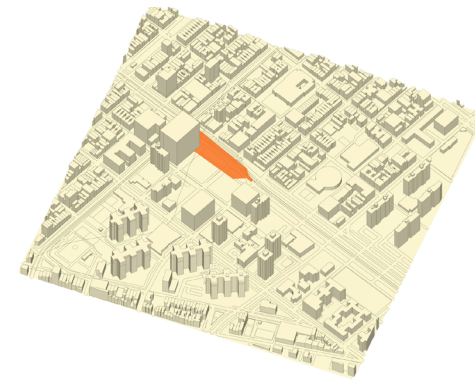
Visual Illusion Exploration of Volume



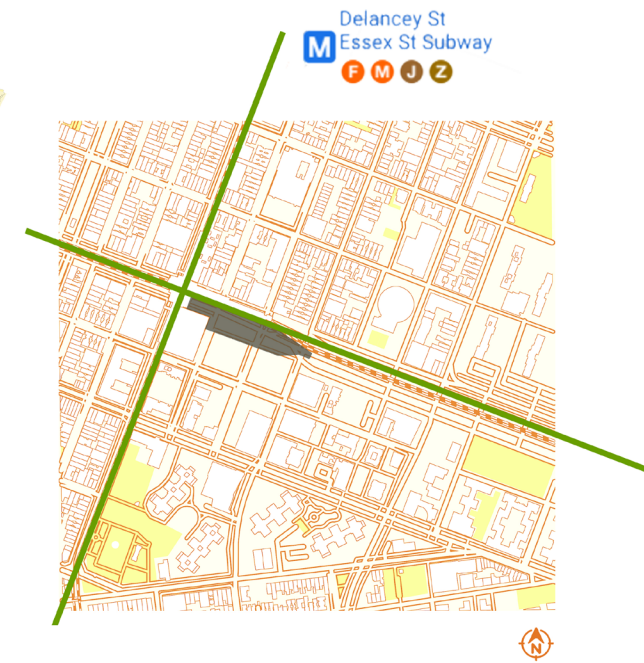
Visual Illusion Exploration on Surfaces

My project starts with looking at Varini's work that are designed to be viewed from a specific point that creates an optical illusion that tricks human vision. When standing at the very vantage point you would see the visual painting pop out the scene to the very front of the space.

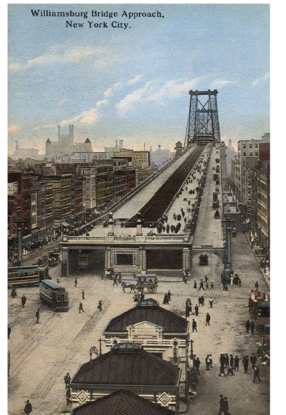
Going back to the low line site, the abandoned space has a lot of unique views to offer. The exposed steel structures with the marks and trace of the history of the once underground trolley terminal. I was inspired to create a public park that celebrates the underground culture of new york. It can be a space for the tourist to see the history of the abandoned terminal, it can also serve as a unique underground park for the locals.



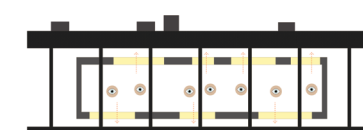
Site



LOWER EAST SIDE



My proposal is to insert a new volume into the site.



CALMNESS/
HONESTY/
PEACE

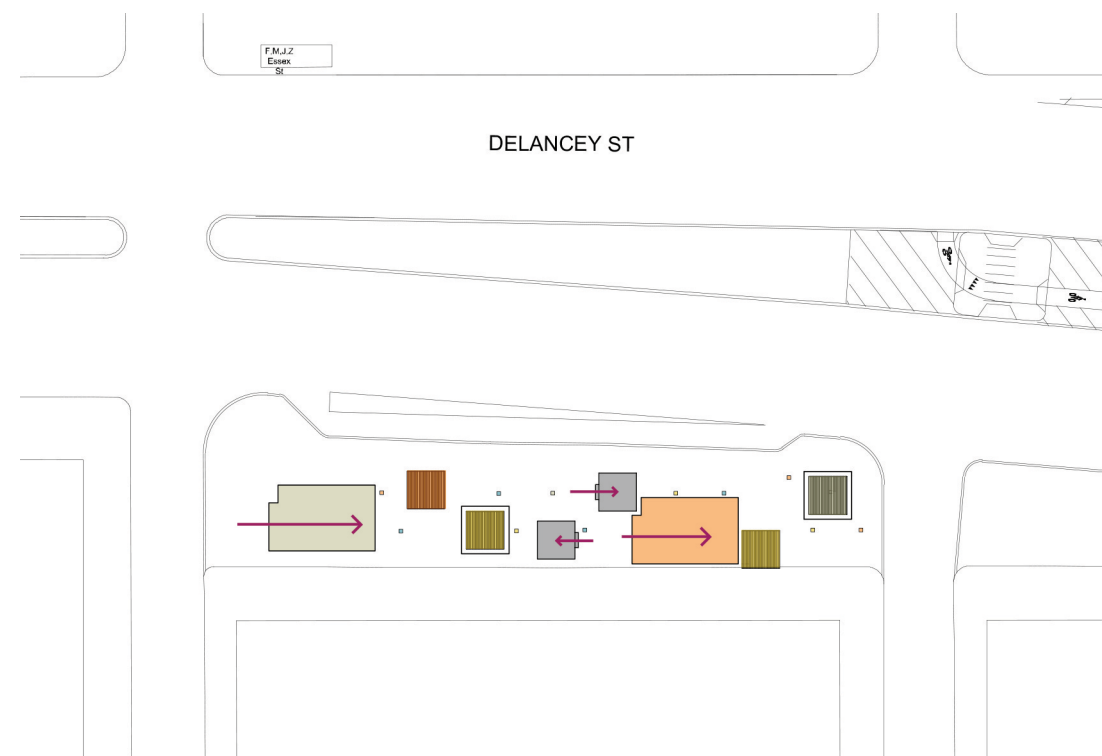
HUMOR/
FUN/
LIGHTNESS/
LOGIC

CREATIVITY/
PRODUCTIVITY/
PLEASURE/
OPTIMISM/
ENTHUSIASM

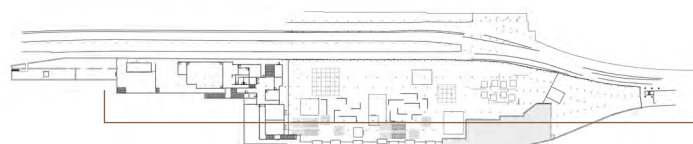
BALANCE/
HARMONY/
ACCEPTANCE

Color Therapy

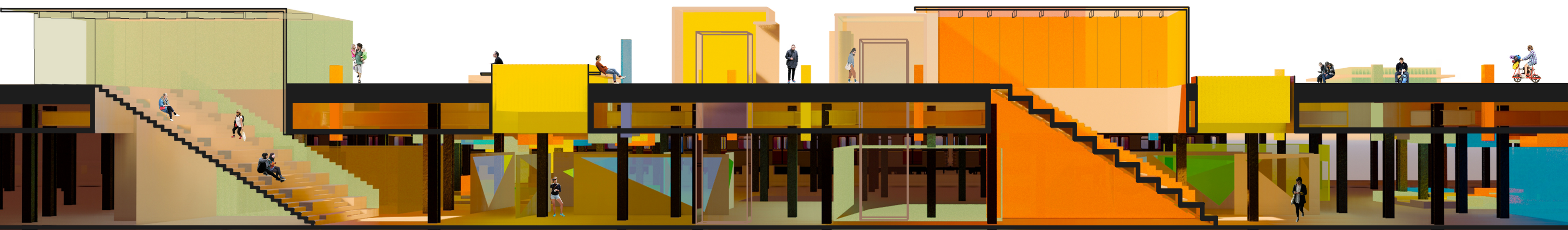




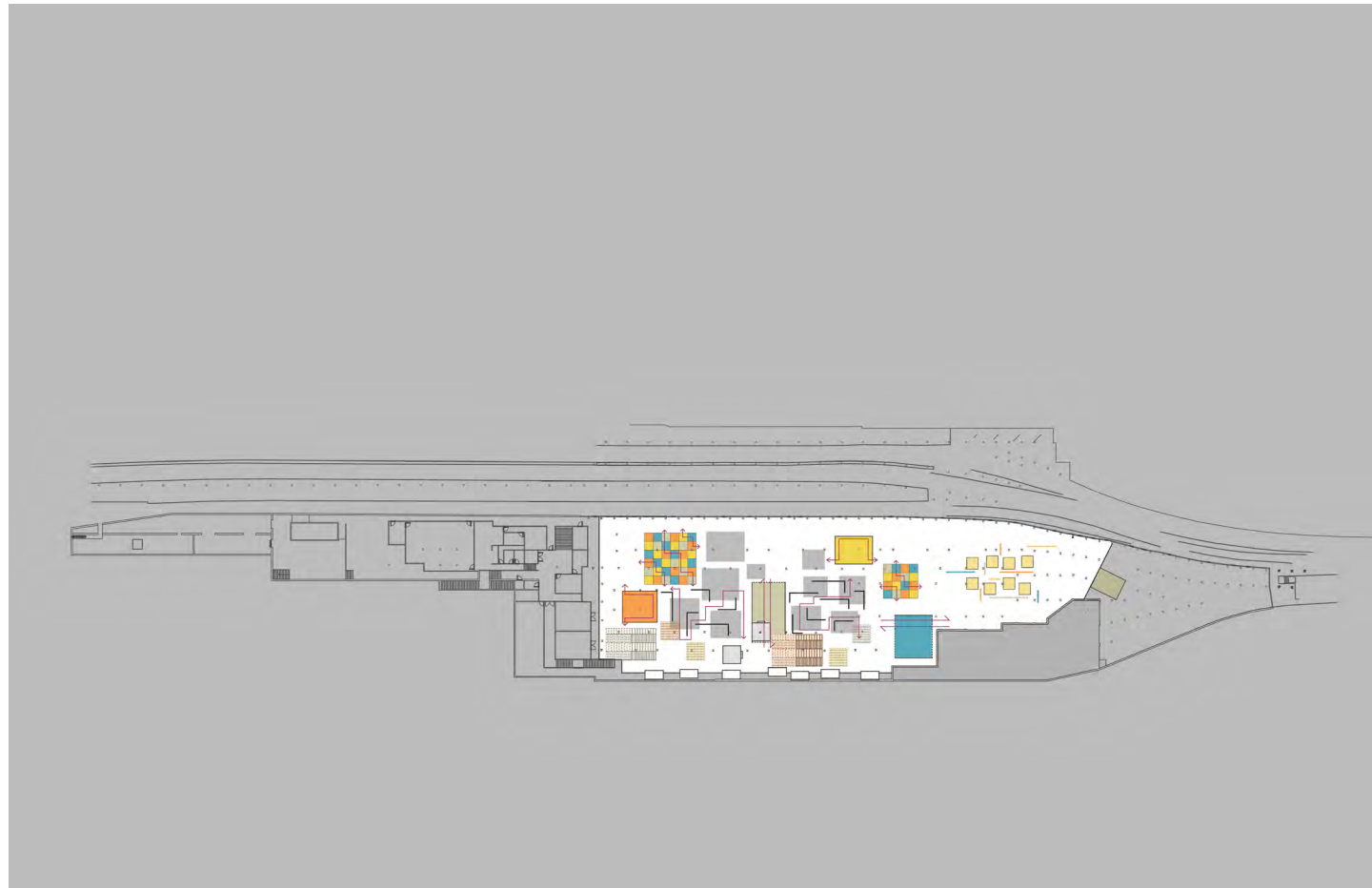
Ground Floor Plan



This section here helps showing the relationship between aboveground and underground. I kind of think of these above ground spaces as an extension of the space below. As you are already kind of experiencing the low line before you even enter the underground space.



天外有天

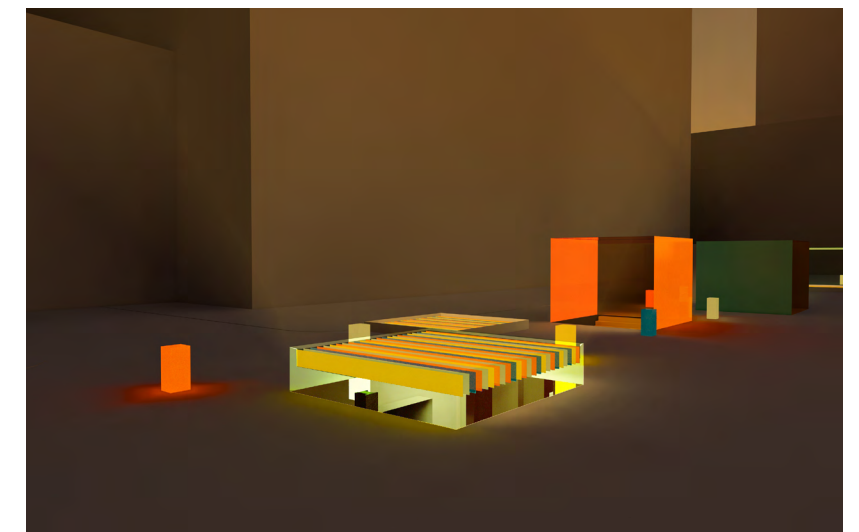


Plan

The white is to show the new volume that is being inserted into the space and the grey squares here show the places that are being cut out to show the existing ground. All of these colored squares have different functions and they represent different zones of the space.



Visual Overlay

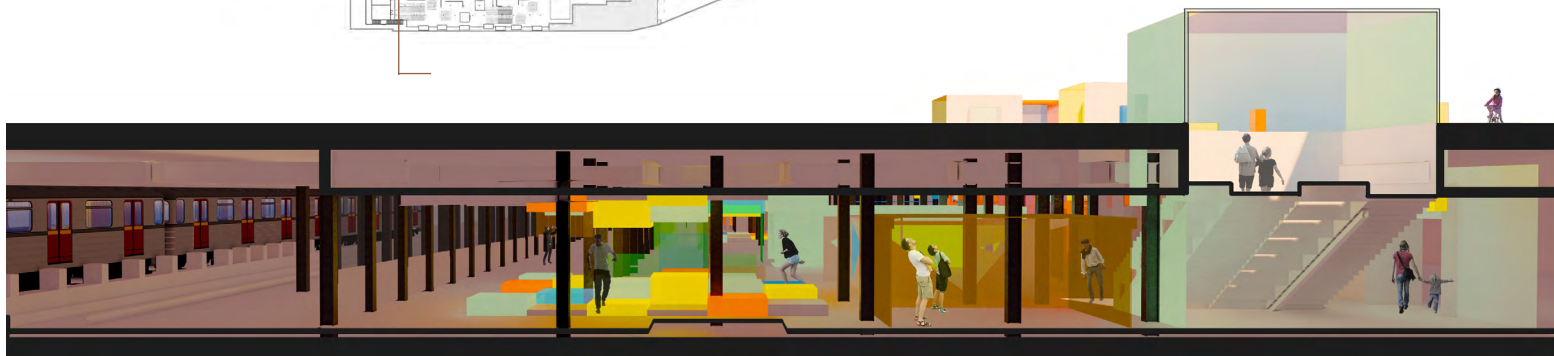
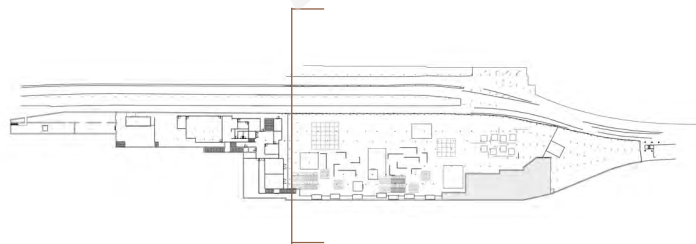
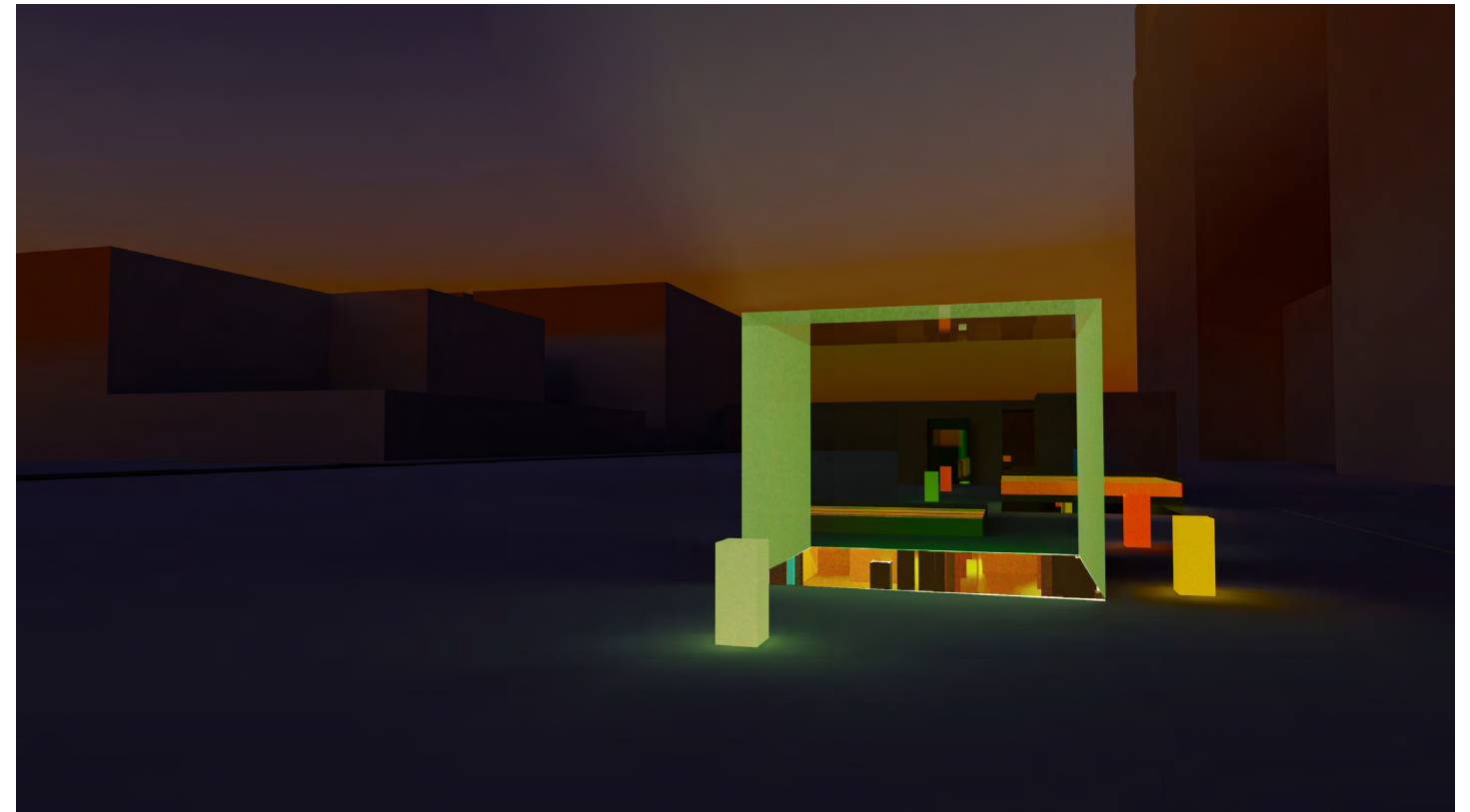


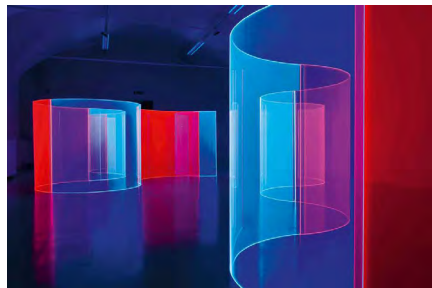
Lighten up city at night

This section shows some of the zone, the more enclosed space that encourages a slower circulation also can be utilized as event space. Next to it is when there's a mix of color which is a zone that is for social gatherings.

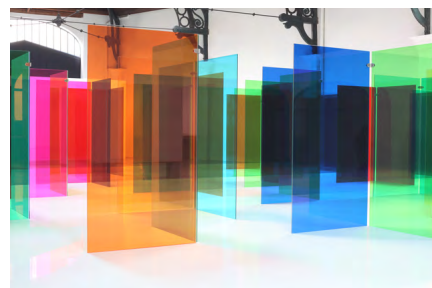


Above Ground





Fluorescent Acrylic



Plexiglass



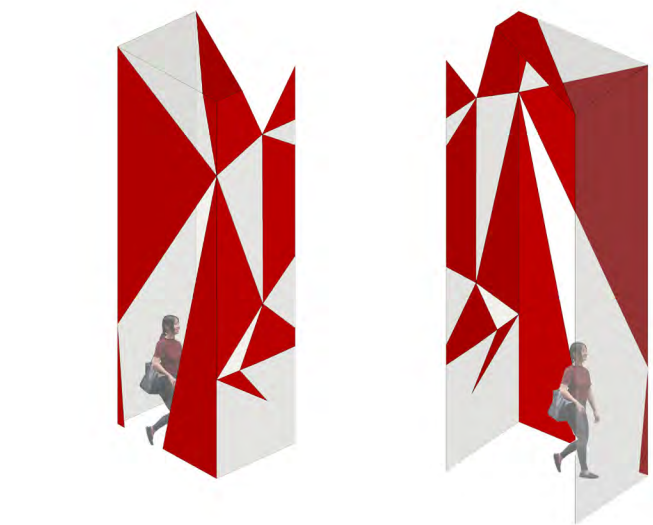
Entrance

This is a perspective view of the one of the entrance, where you can see places on the floor and the ceiling that are open up that you can see the existing sites. The skylight, the pixel glass partition area.



Wander Zone

This is more of the view of the pixel glass partition zone. It is a place that you would walk around and get lost a little, and when you circulate through it, it creates different views of the physical space that would give different experiences for the viewer.



Transparency



Seating Zone



Passage Zone

伏游

These zone that is more of a theorshole that is transporting circulation into other areas. Here kind of show and compare the different zones that encourage different activities.

白話



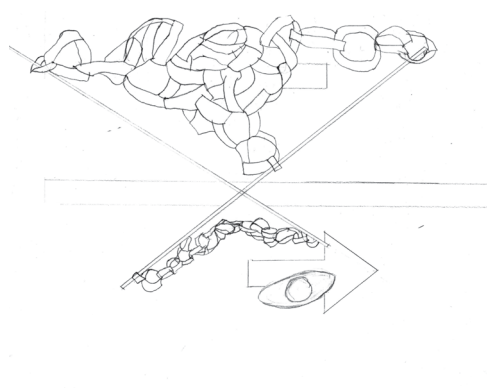
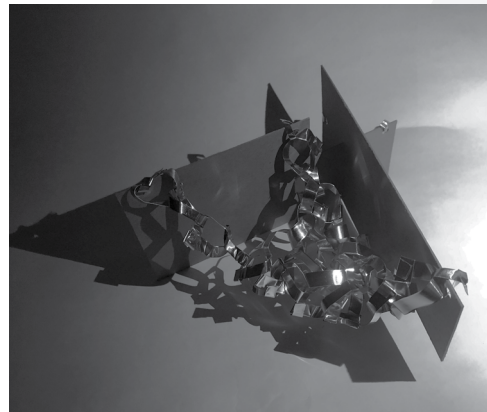
BOUNDARY



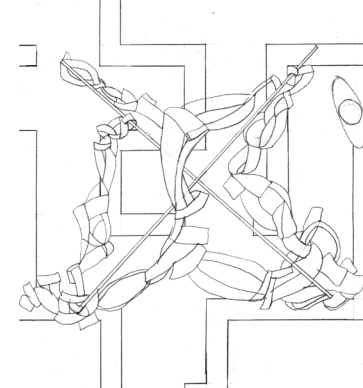
My project focused on the visual connection between the existing with the new. This is a underground park project where I explored the relationship of the aboveground with the underground, the light and the color.



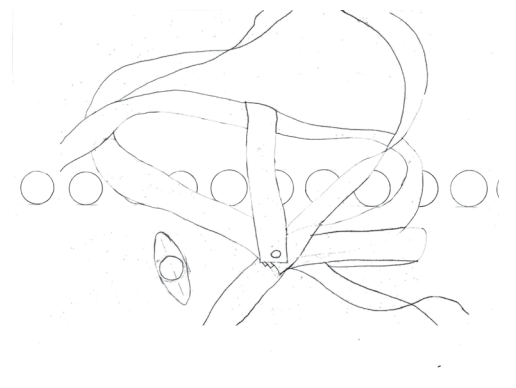
扑朔迷离



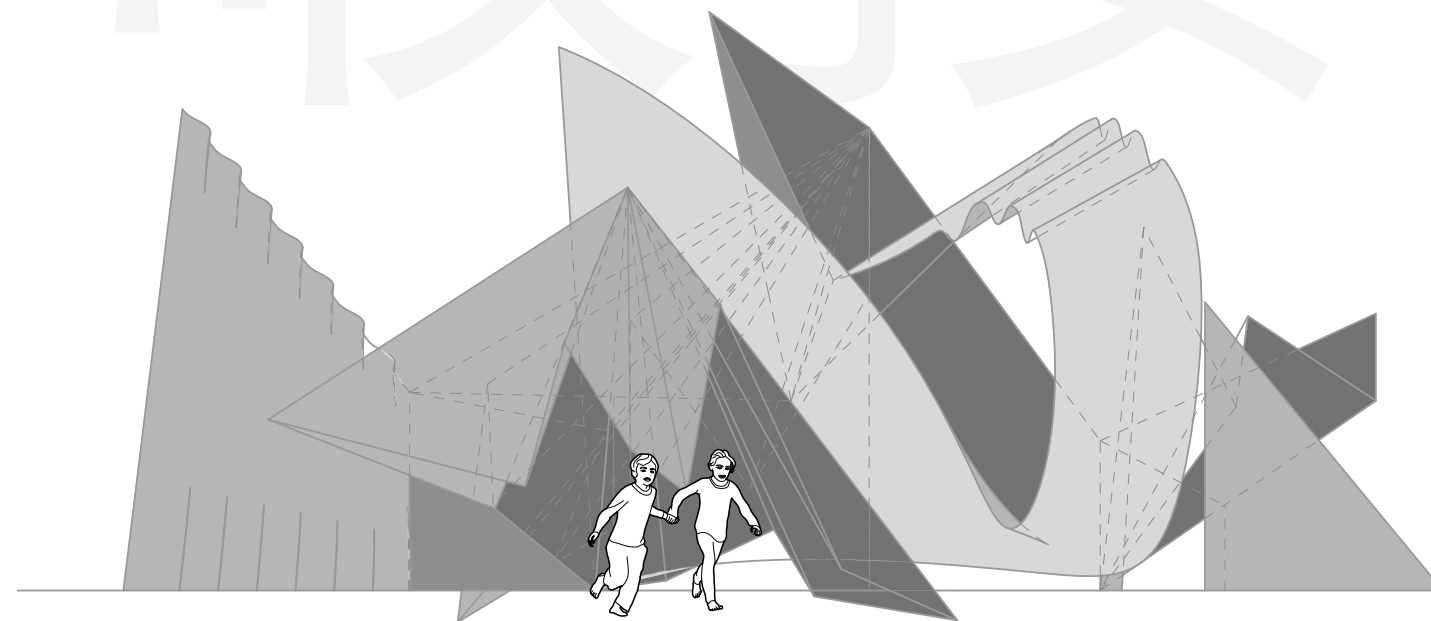
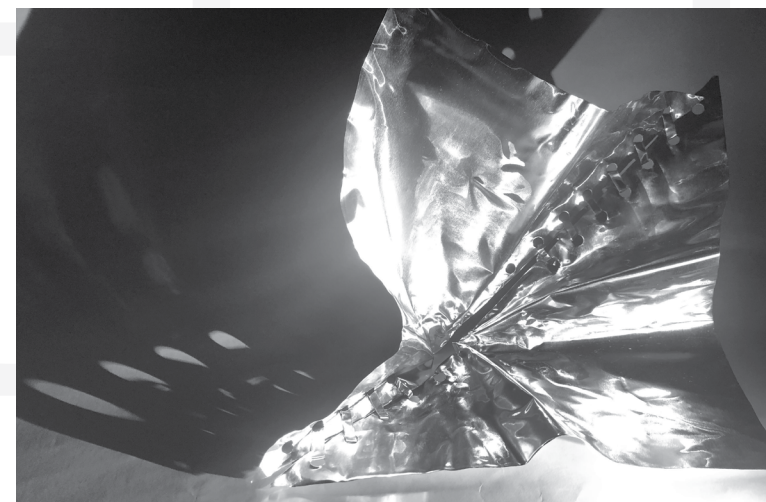
Road



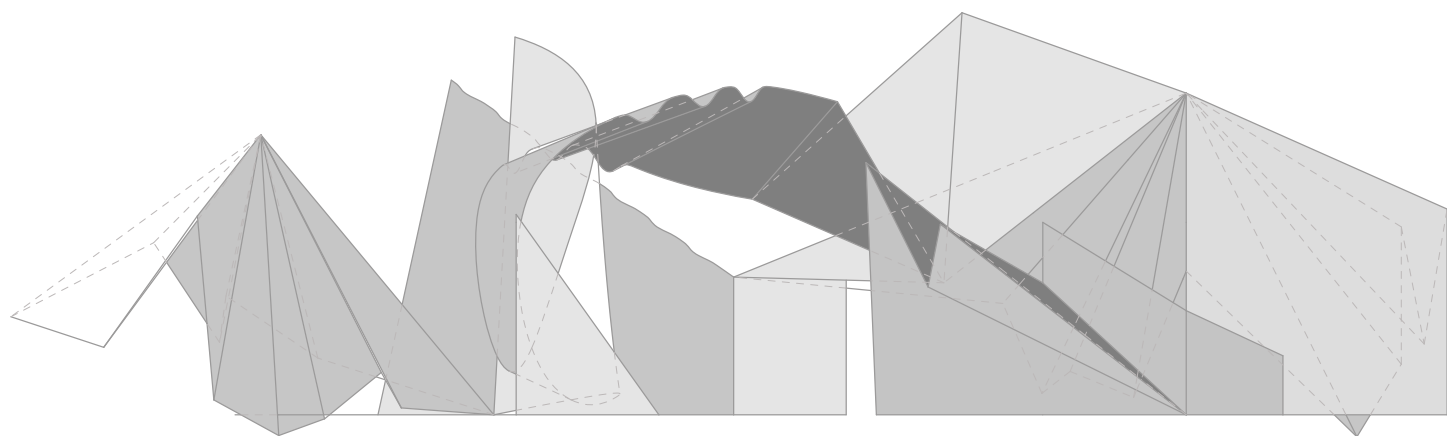
Maze



Jail



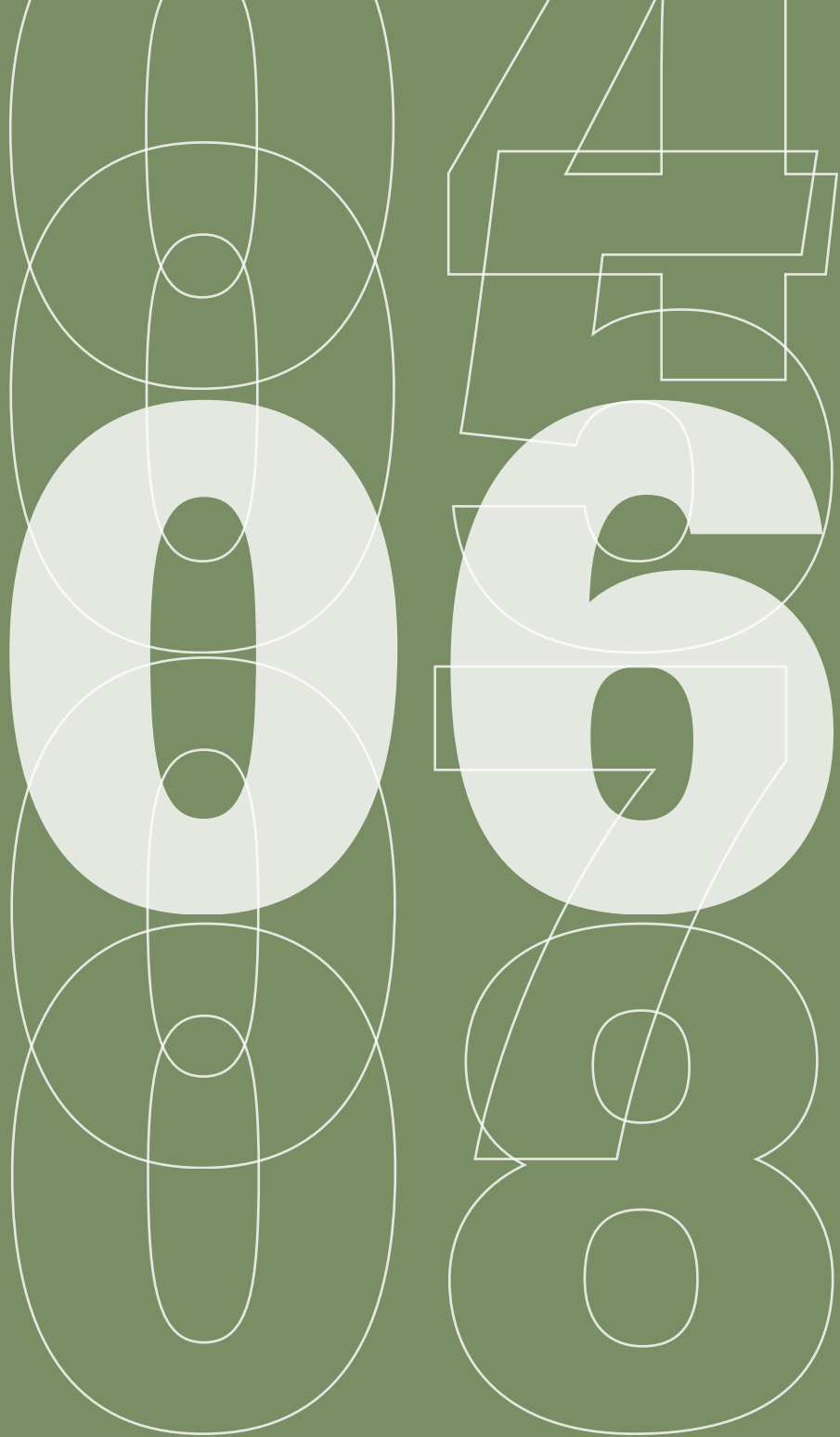
Boundary of Maze



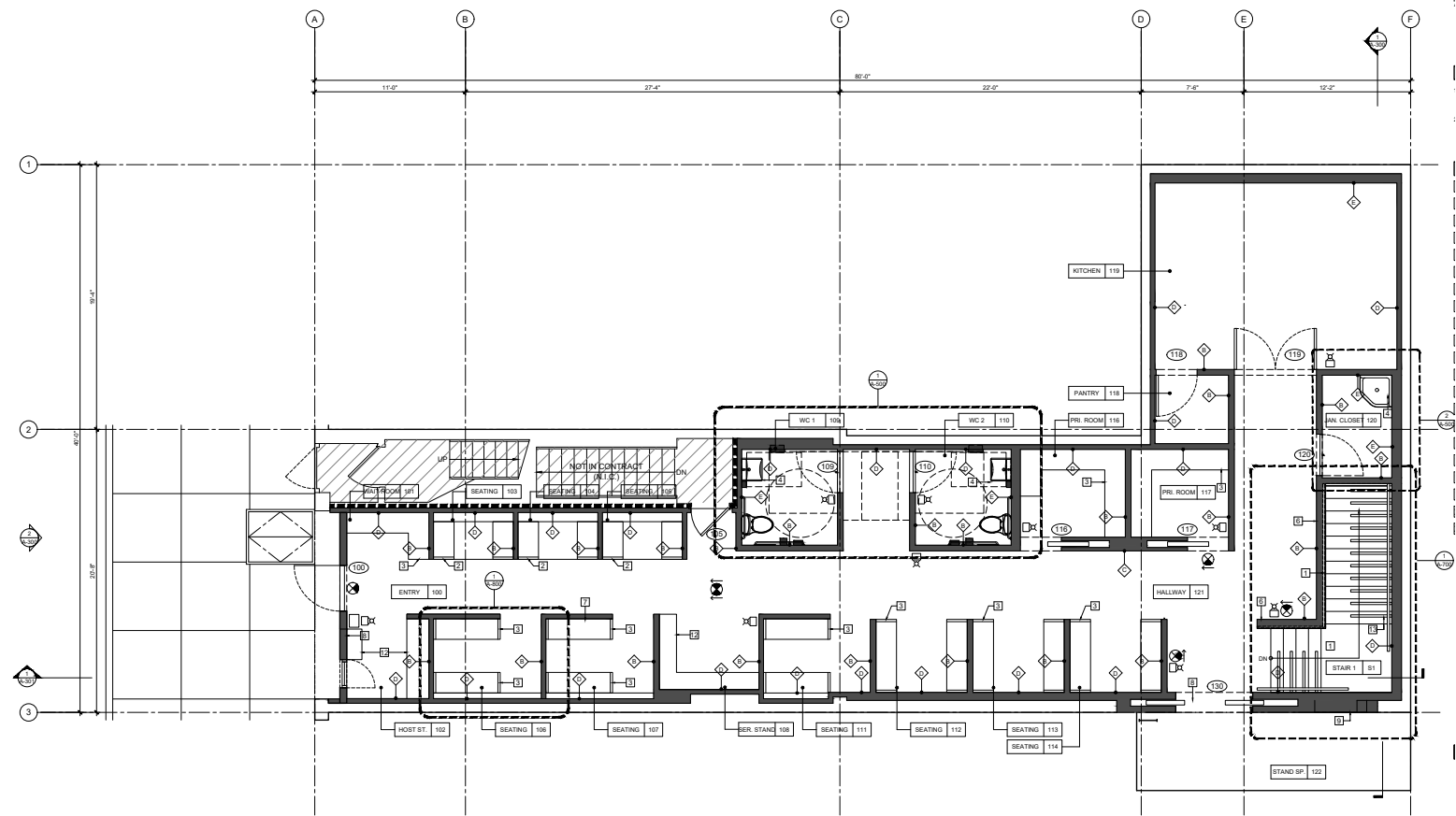
纷繁芜杂

Exploring the
boundary and
the experience
of a maze.

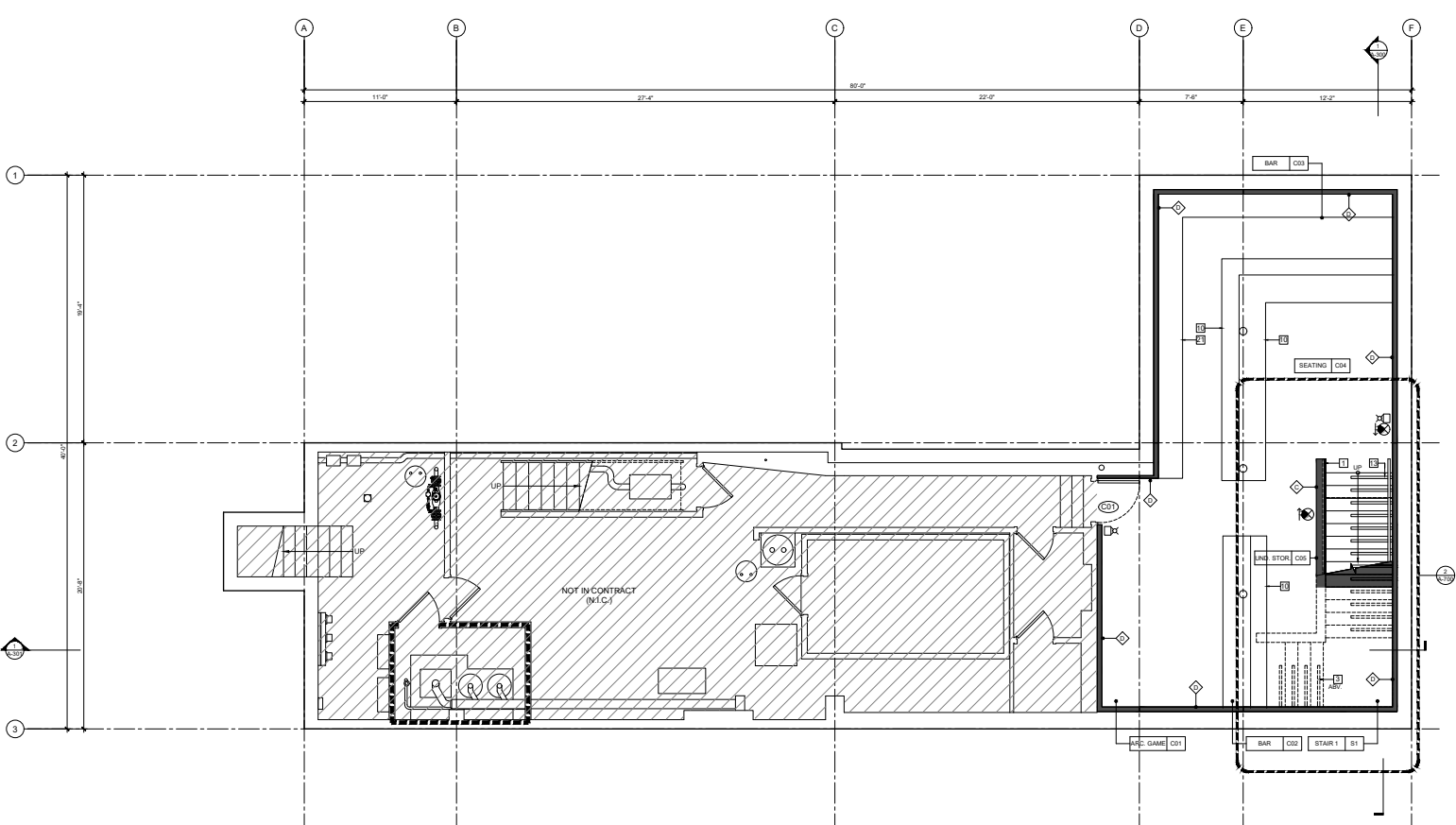
WOR. SET



A set of construction drawing of a bar design in brooklyn. This set will show case the ability in understanding how to produce a drawing set for construction.



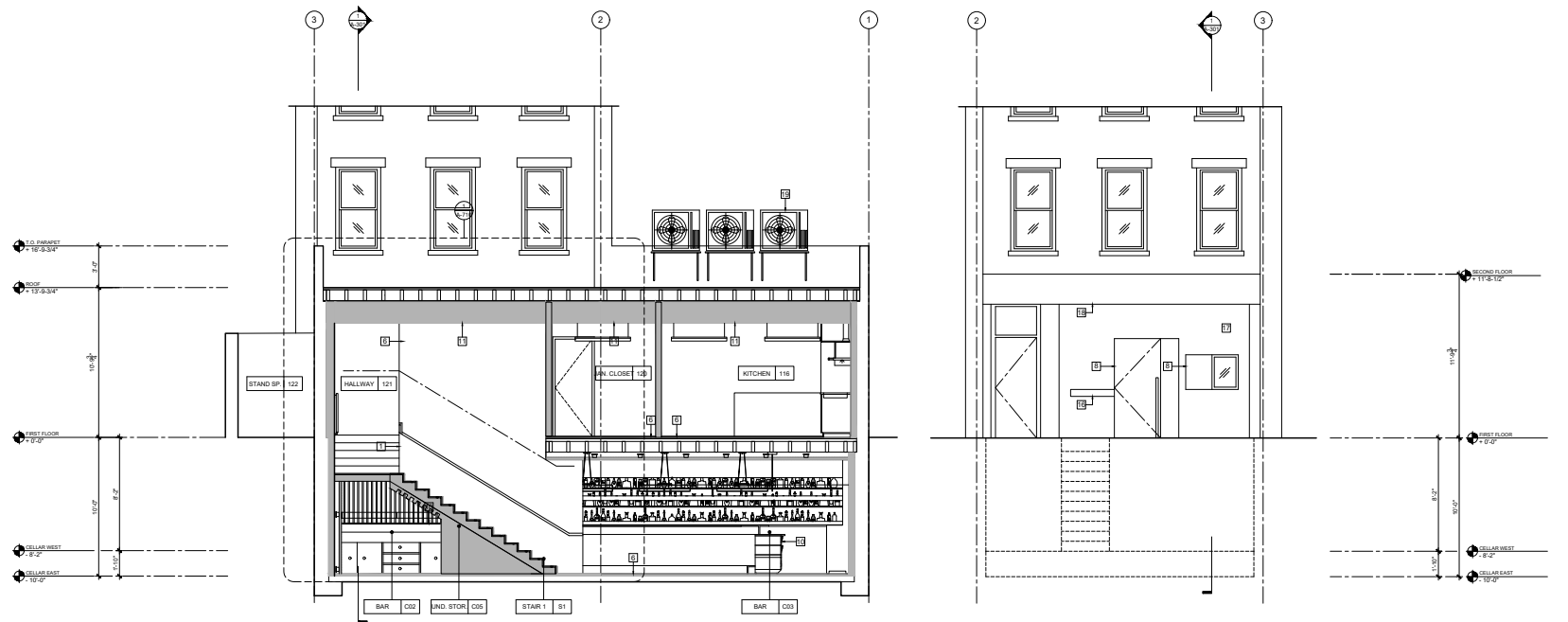
First floor construction plan



Cellar floor construction plan

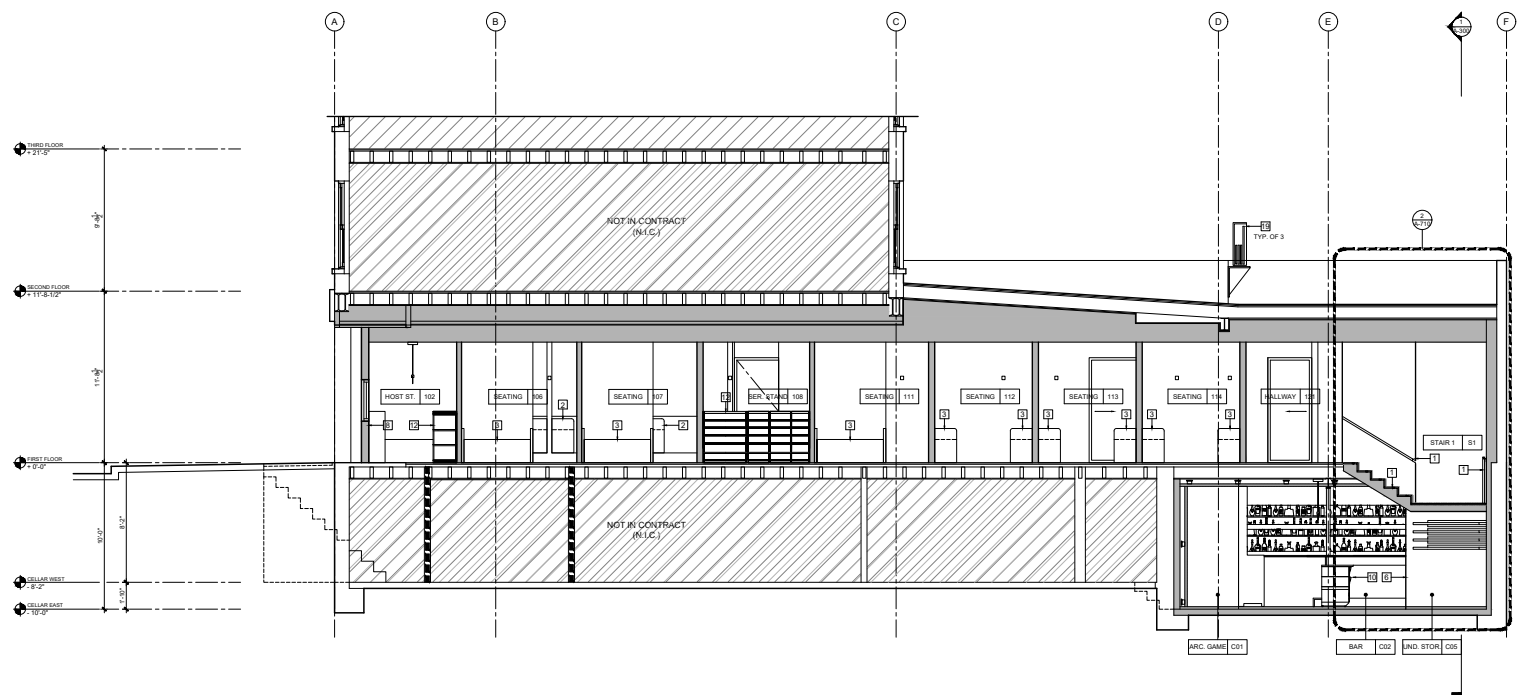
大舍

细入

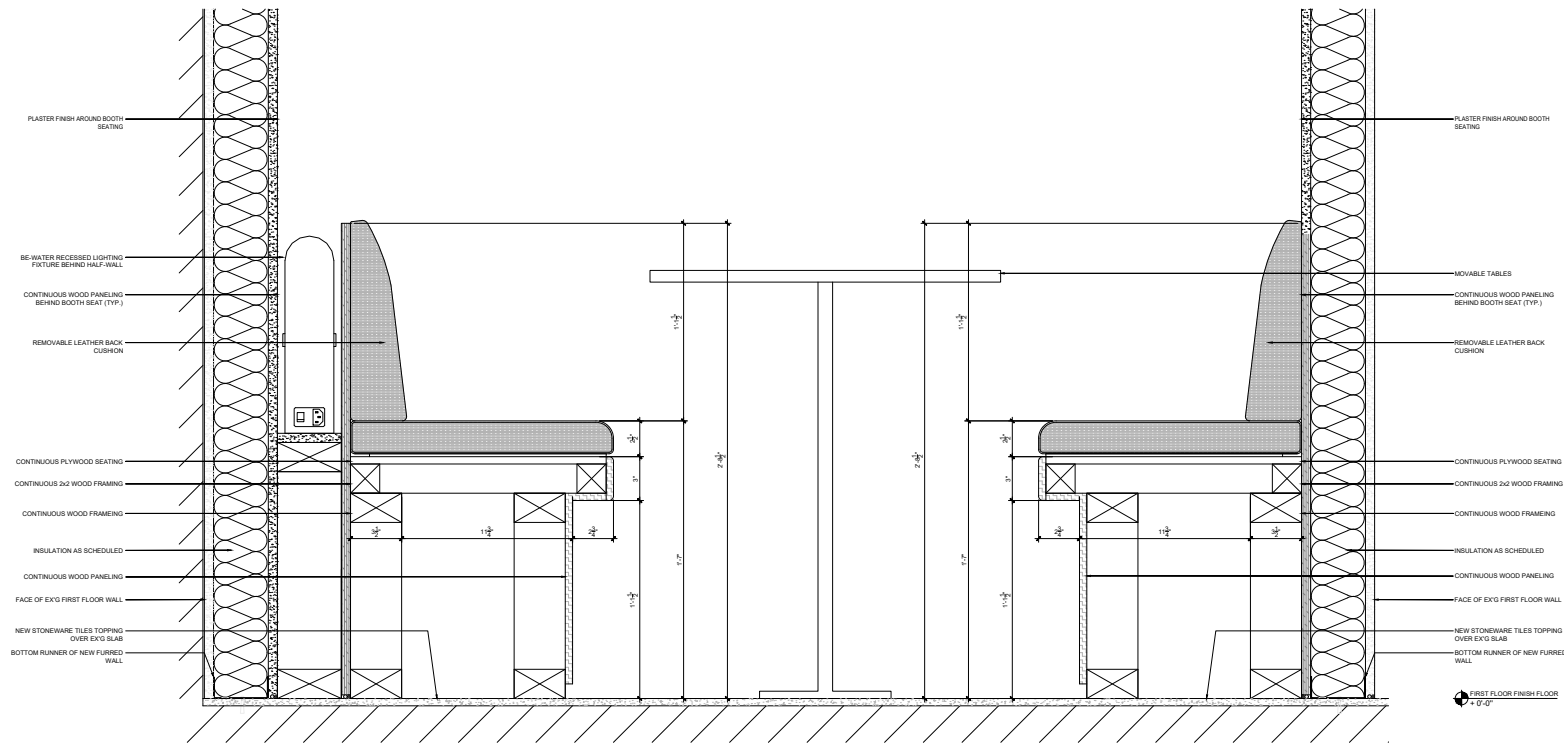


Building section (Looking west)

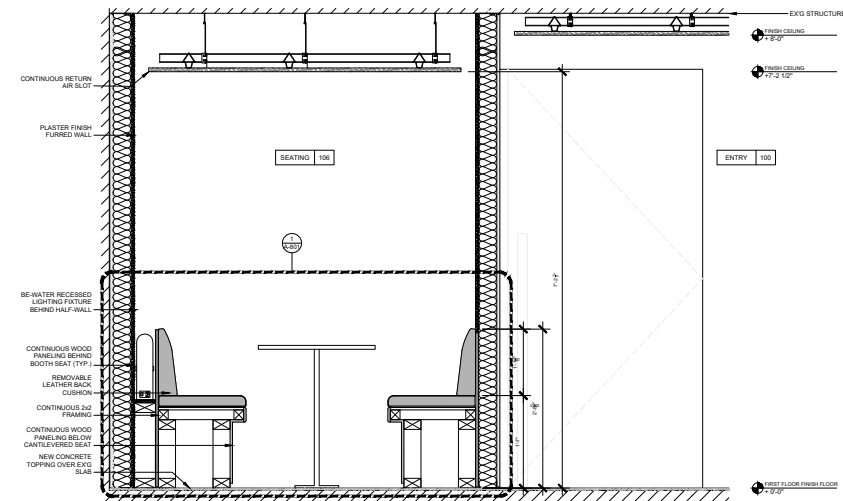
Elevation



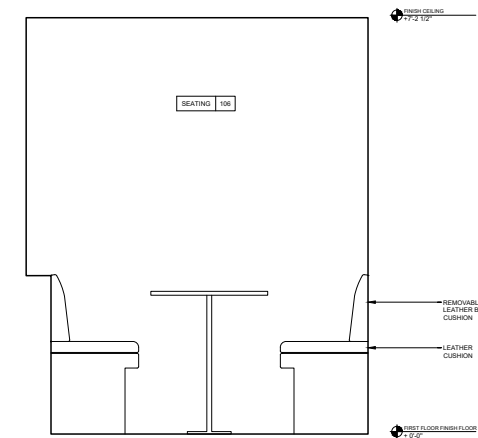
Building section (Looking north)



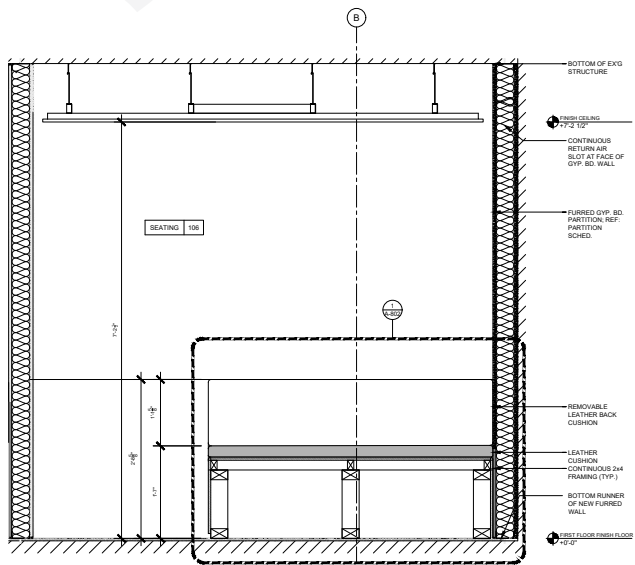
Section detail of private booth seating



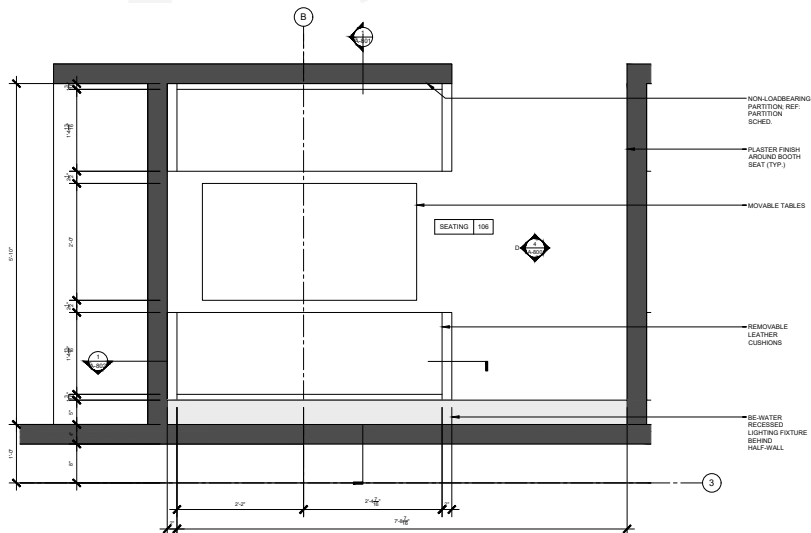
Enlarged section at seating booths



Enlarged section at seating booths



Enlarged section at seating booths

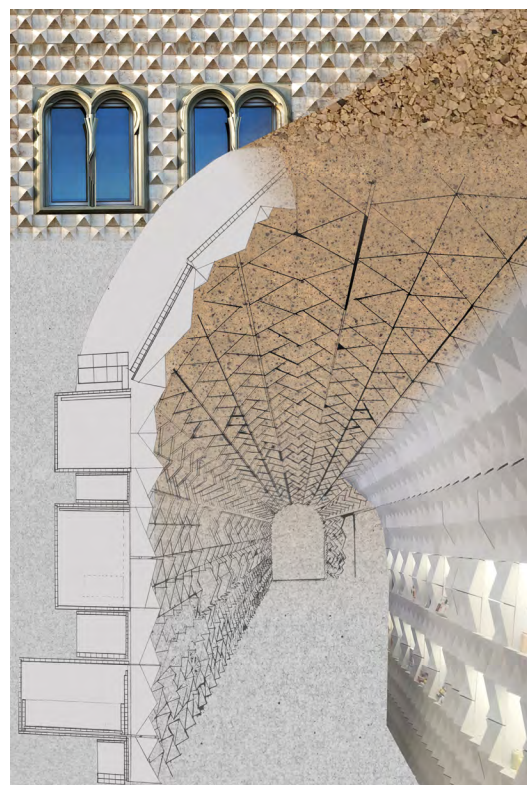
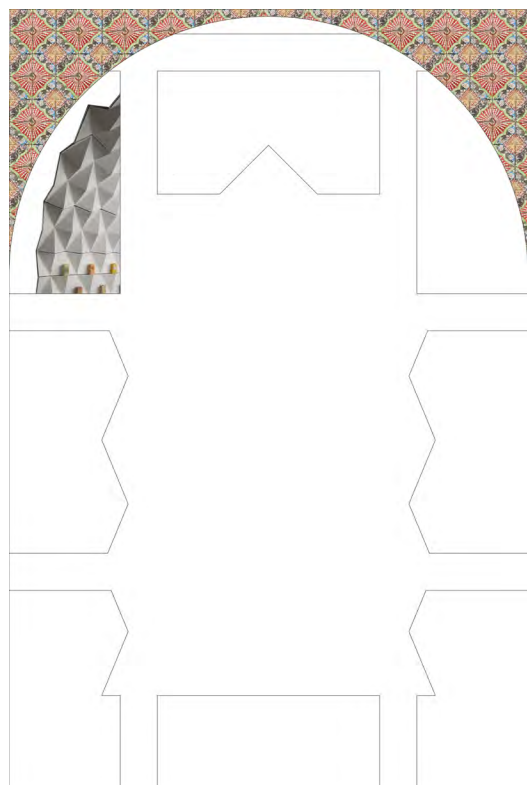


Elevation plan at seating booths

MATERIAL



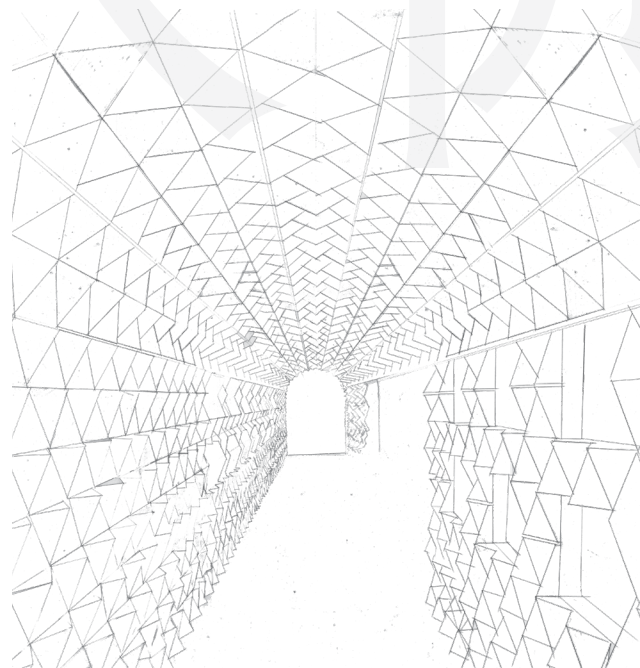
This tunnel-like interior references the history of the brand and traditional Portuguese architecture style. The drawing captures the atmosphere of the tunnel-like interior with the emphasis on the material and its connection to Portugal, the source and the material.



Progress Works

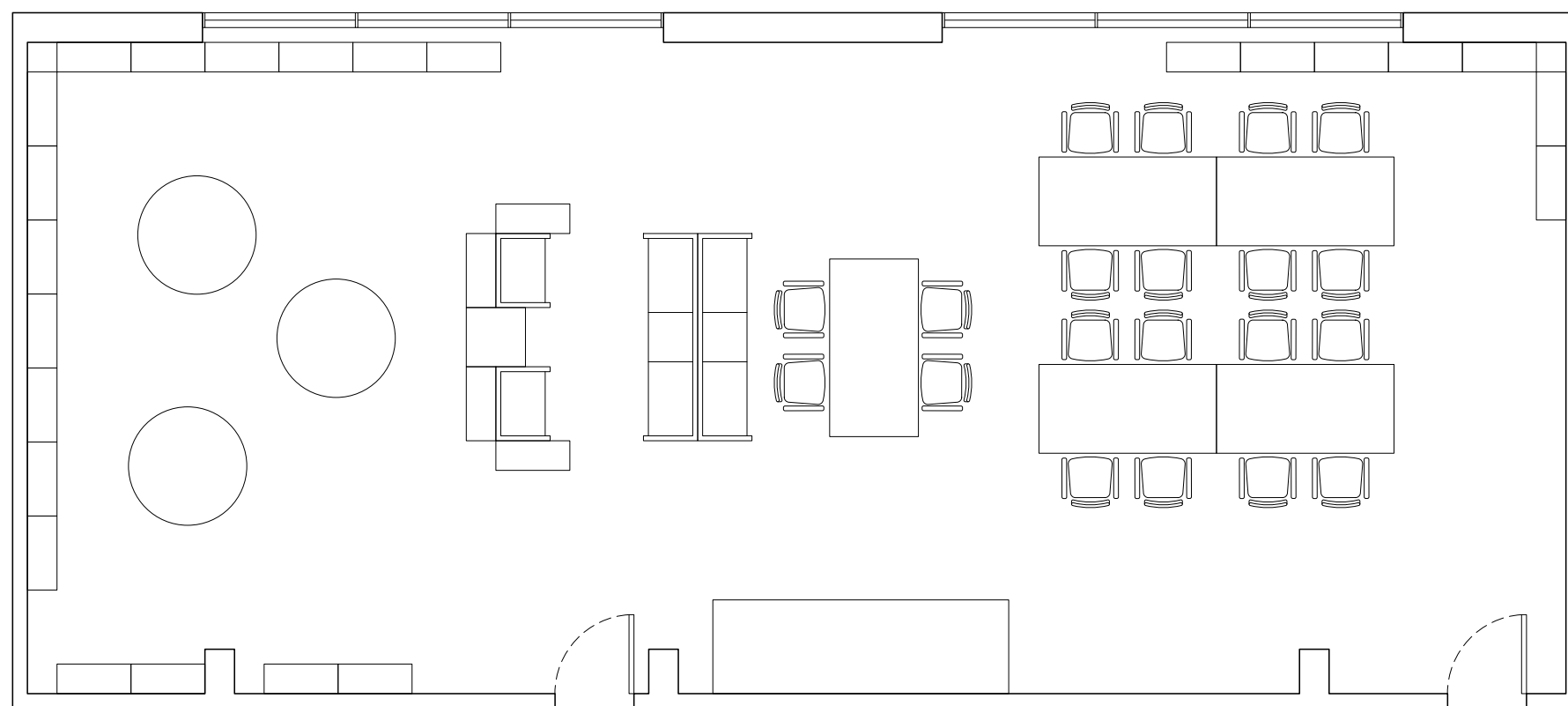
This is a boutique designed for a Portuguese Soap Company. This tunnel-like interior references the history of the brand and traditional Portuguese architecture style and combines with modern digital fabrication techniques.

The different shades of white is a significant part of the interior with the different shades produced by shadows of the textured surface. When you look up close, the surfaces of the panels are not smooth, but fuzzy. This is because of the fabricated process for this material. But when you look from a distance, the geometric patterns formed by the panels create a continuous tunnel-like interior.



An abstract graphic design on a dark brown background. On the left, a vertical sequence of overlapping circles and ellipses in white and light gray. On the right, a large, stylized number '8' in light gray, with a white outline of the same number behind it. The design is minimalist and geometric.

The goal of my project is to create spaces in the library that support multiple functions at the same time. Moreover, by designing new functions to the conventional elements of a public library encourage more visitors to this space. With the combination of the new and the old, the development of public library space should be moving toward a more innovative direction.

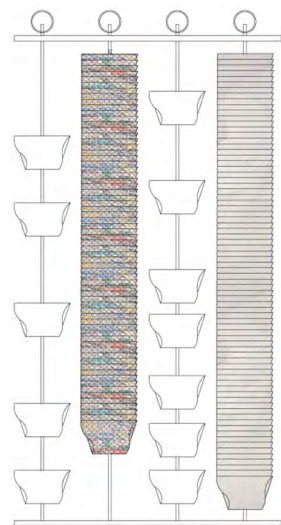


Site Plan



Site Photo

The site for this project is a shared library space located on the fourth floor of Forsyth Academy. My project is to help create spaces in the library that support multiple functions at the same time.

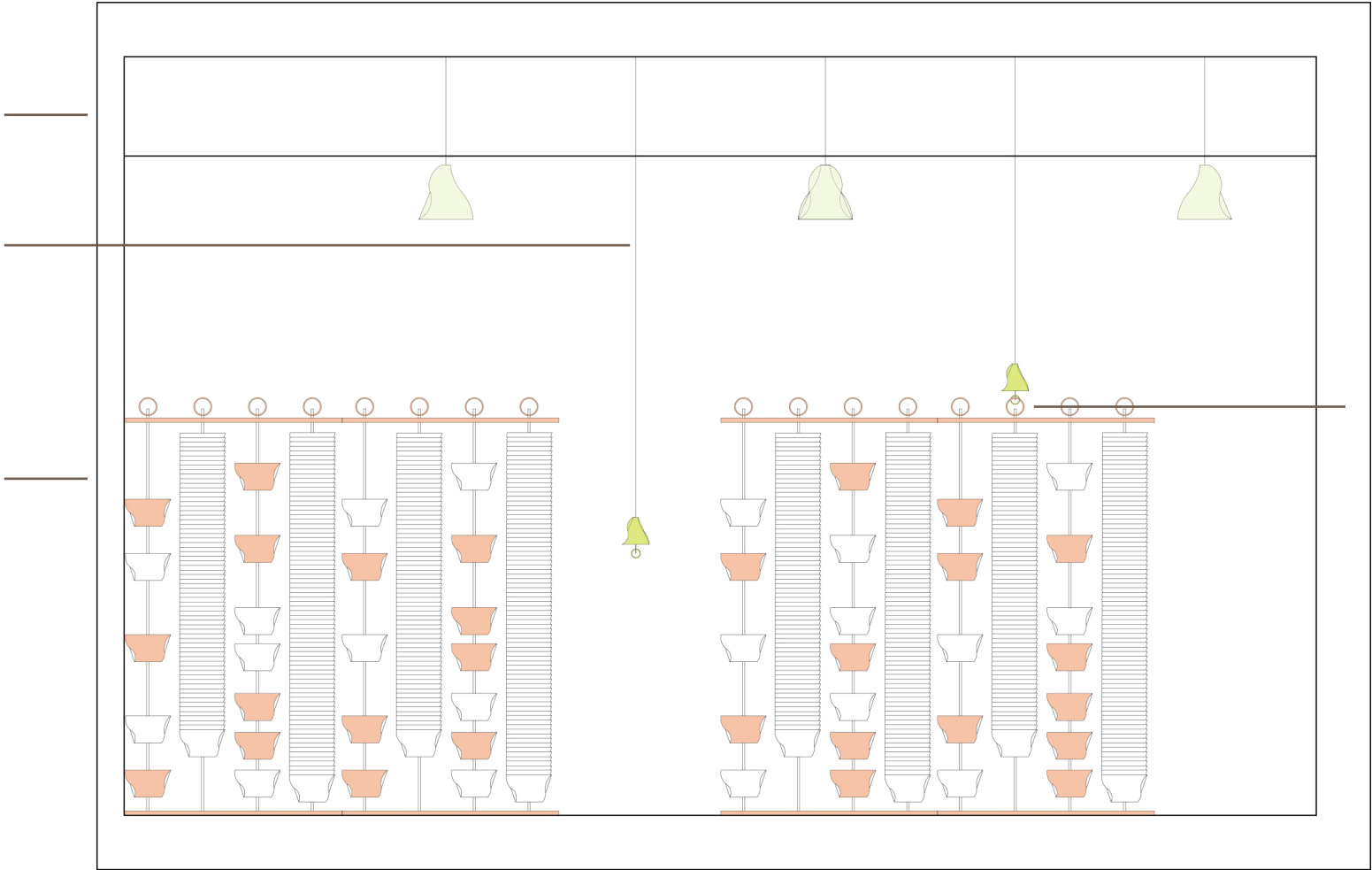


Stacked pockets as acoustic insulation

Fixed Lighting

Adjustable Lighting

Free Standing Partition



Hooked on

Elevation

Here's an elevation of the final proposal. Which mainly consisted of a free-standing partition with lighting fixtures hanging on the ceiling. Some of the fixtures are fixed, like the ceiling light in light green. Some are more flexible, like these lighting fixtures that can be manually pulled down to function as a task light.



"Pocket Bag" with recycled fabric

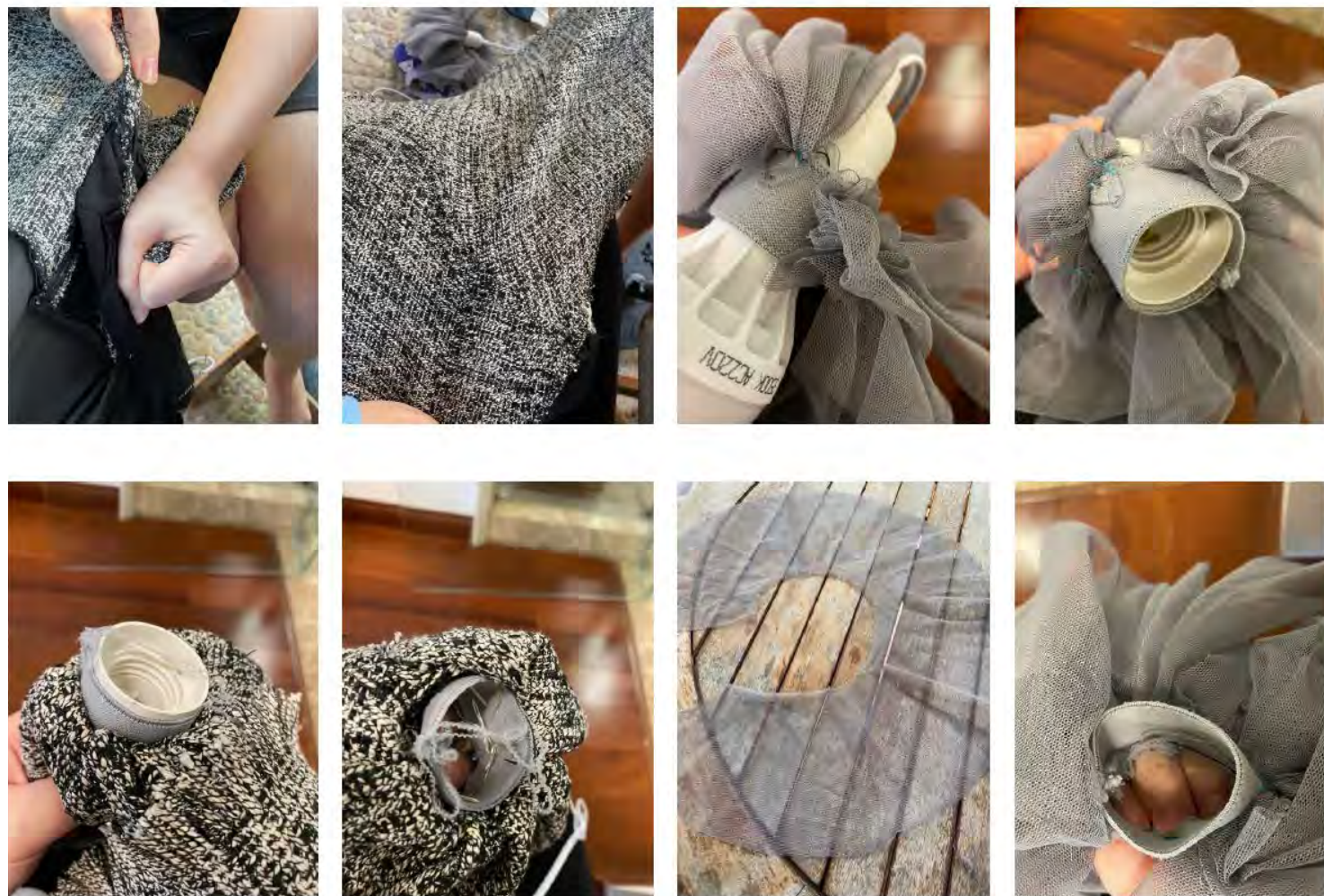


smaller size when is buttoned on



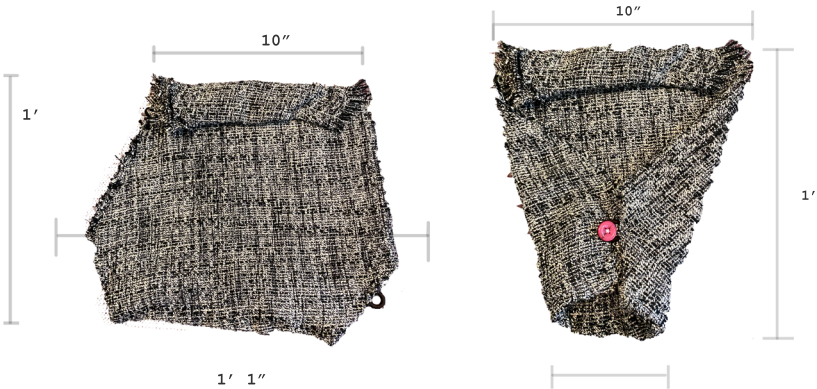
unfasten for a larger capacity





Fabrication of the lighting cover

Visitors can detach the pocket from the rack to use the pocket as a bag to carry around in the library. They could even borrow them out of the library to store books or other items. This allows the “pocket bags” to be used as a way of advertising the library to the other students.

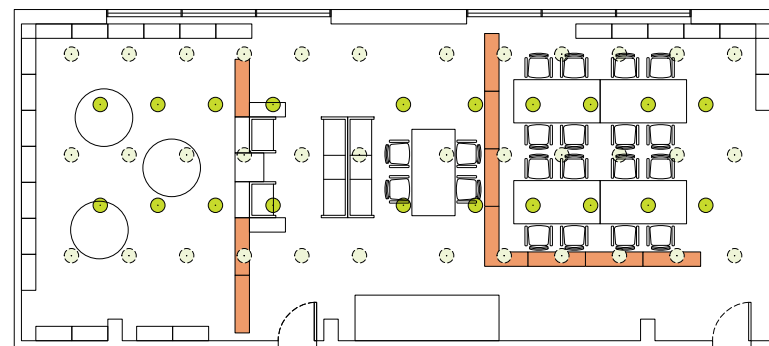


Dimension

Here shows the making of the lighting fixtures. As both the pockets and these lighting covers are designed to be removable. It can easily be taken down to be cleaned or to be replaced.



Easily attached to the light bulb



Flexible Planning



