

am

Aoife McCaul

Interior Design

CONTENTS



01	02	03	04	05	06
FRAGMENT / RECONCILE	IFETAYO CULTURAL ARTS ACADEMY	DANISH CULTURE HOUSE	VEILING THE UNKNOWN	ENTWINE BROOKLYN LIBRARY	GROUNDING THE CAUSEWAY
01	15	23	31	49	57

FRAGMENT / RECONCILE

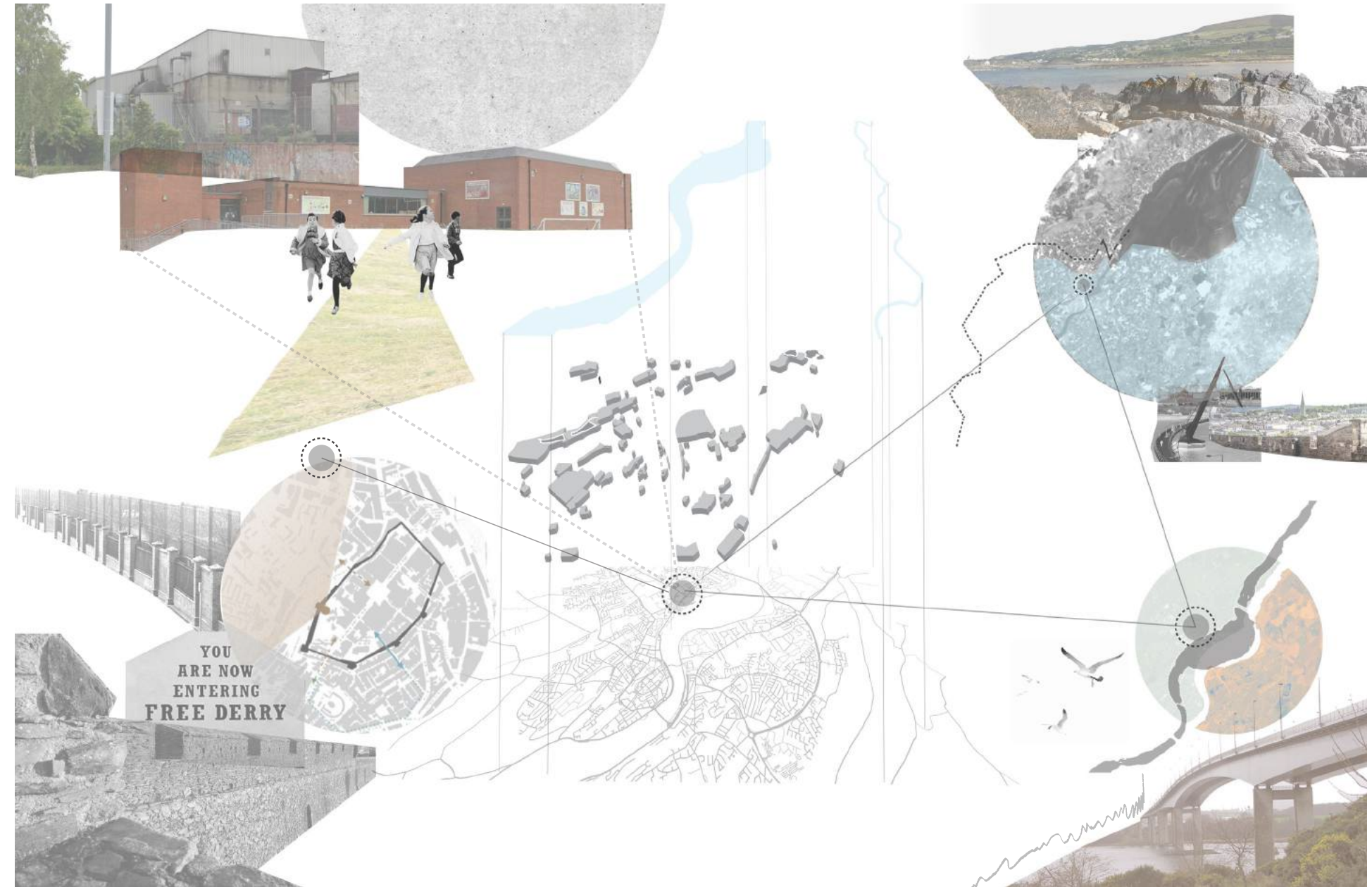
Instructor: Melissa Cicetti

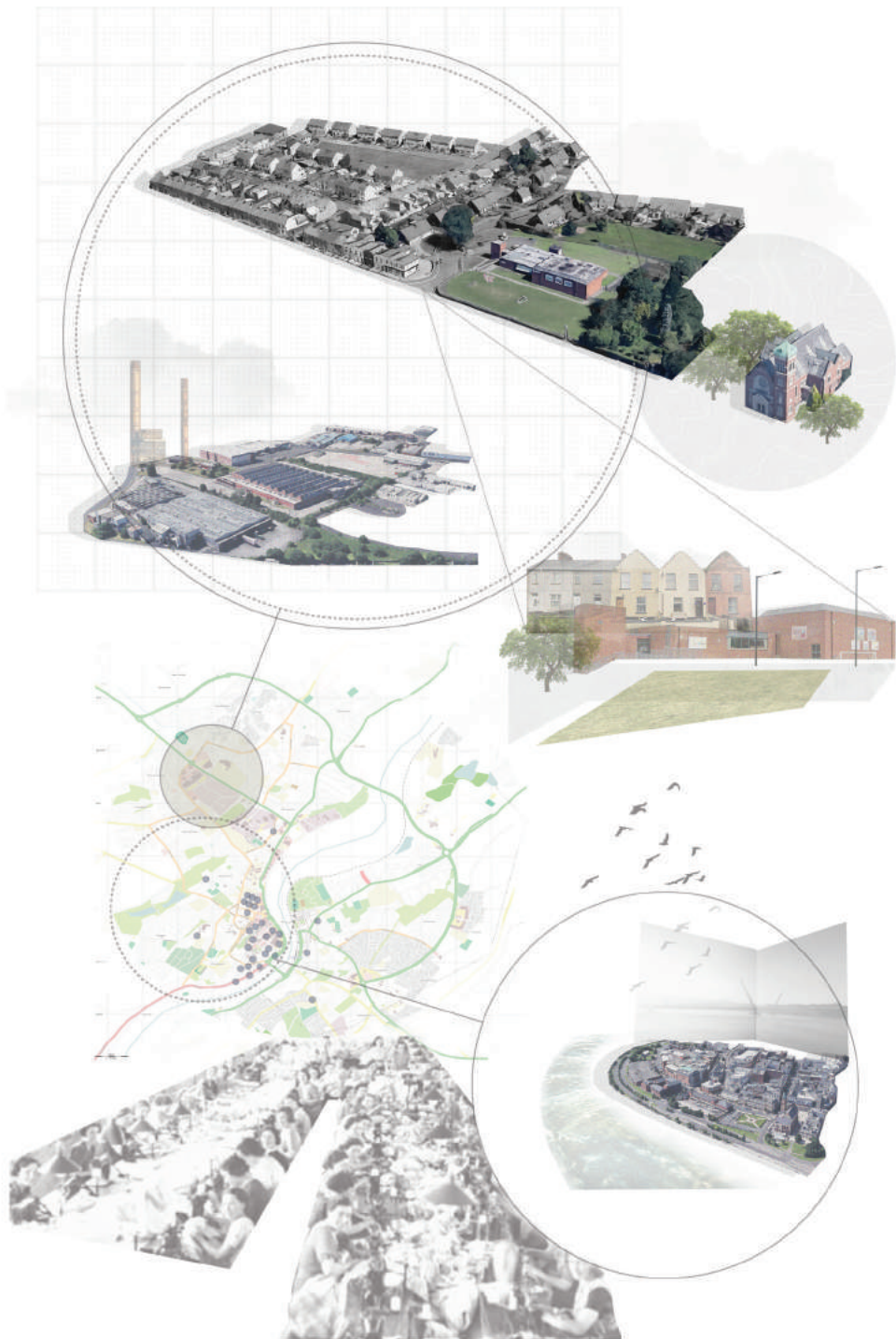
PROJECT BRIEF

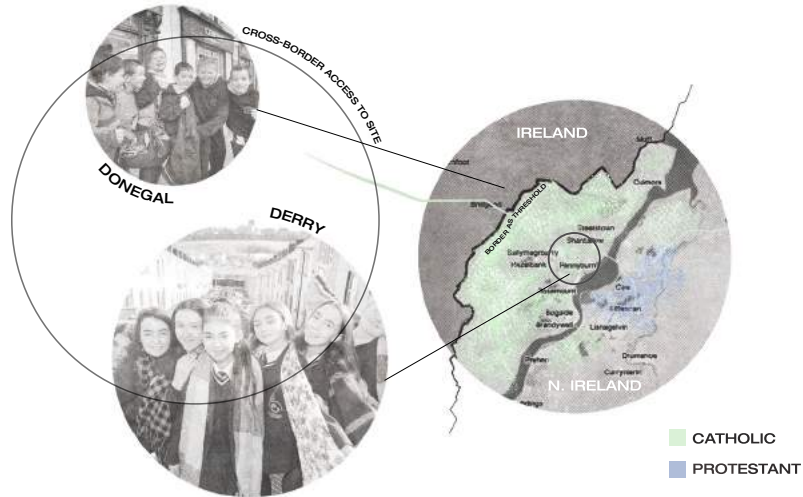
My thesis addresses the complexity of living in a post-conflict, economically deprived community that still struggles under the burden of the past. Following the events of the Troubles and the death of the only dominant industry, an entire generation is coming of age in Derry that not only has to navigate insurmountable unemployment rates, but also forge a path to peace with little to no outside support. To help mitigate the most pressing issue for youth in Derry, I propose a incubator and teaching facility to build community resilience through a strong network of small businesses. The center would provide the resources currently lacking in order to retain their workforce and make upward mobility possible within the city itself.

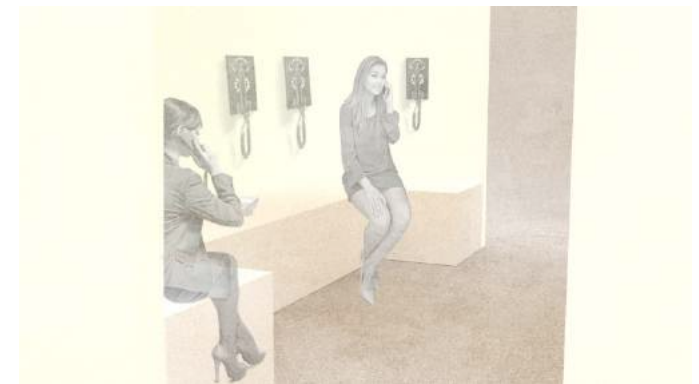
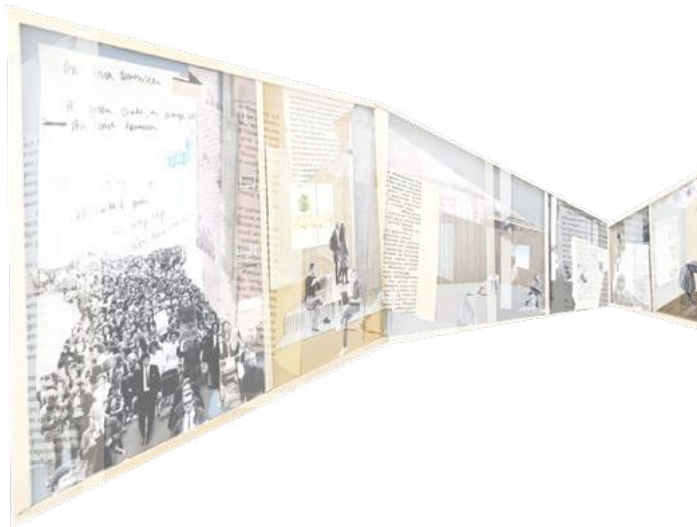
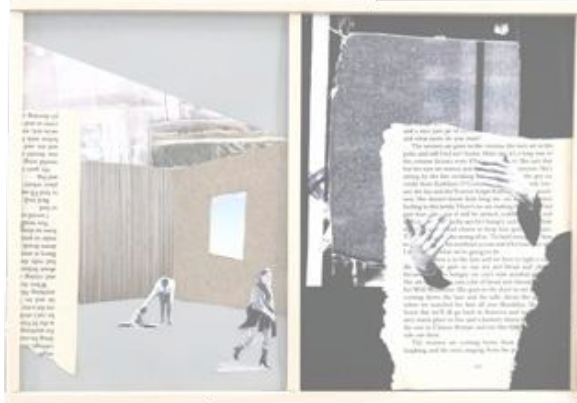
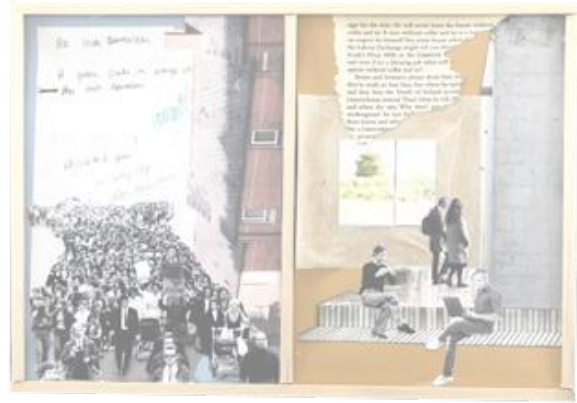
DESIGN STRATEGY

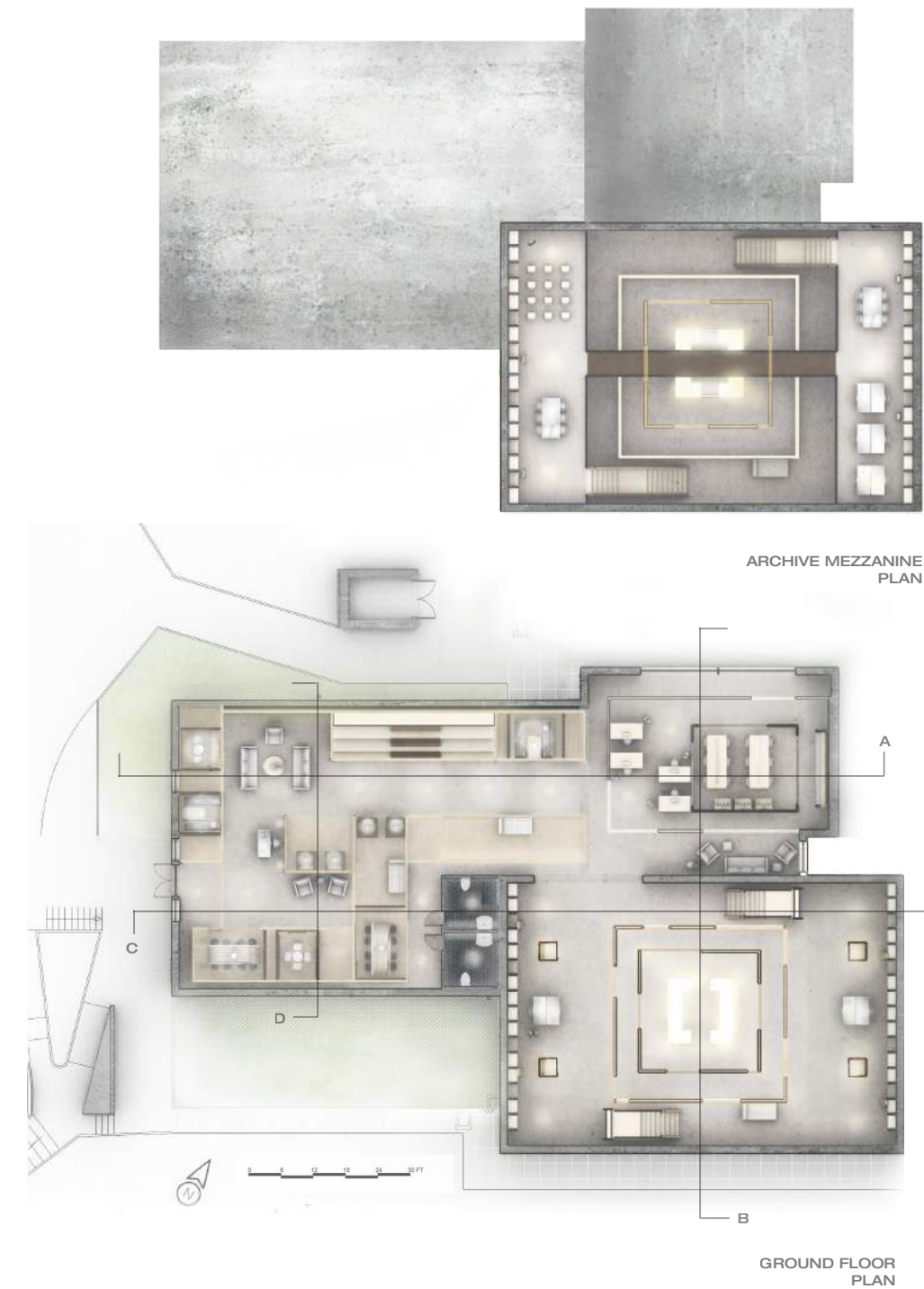
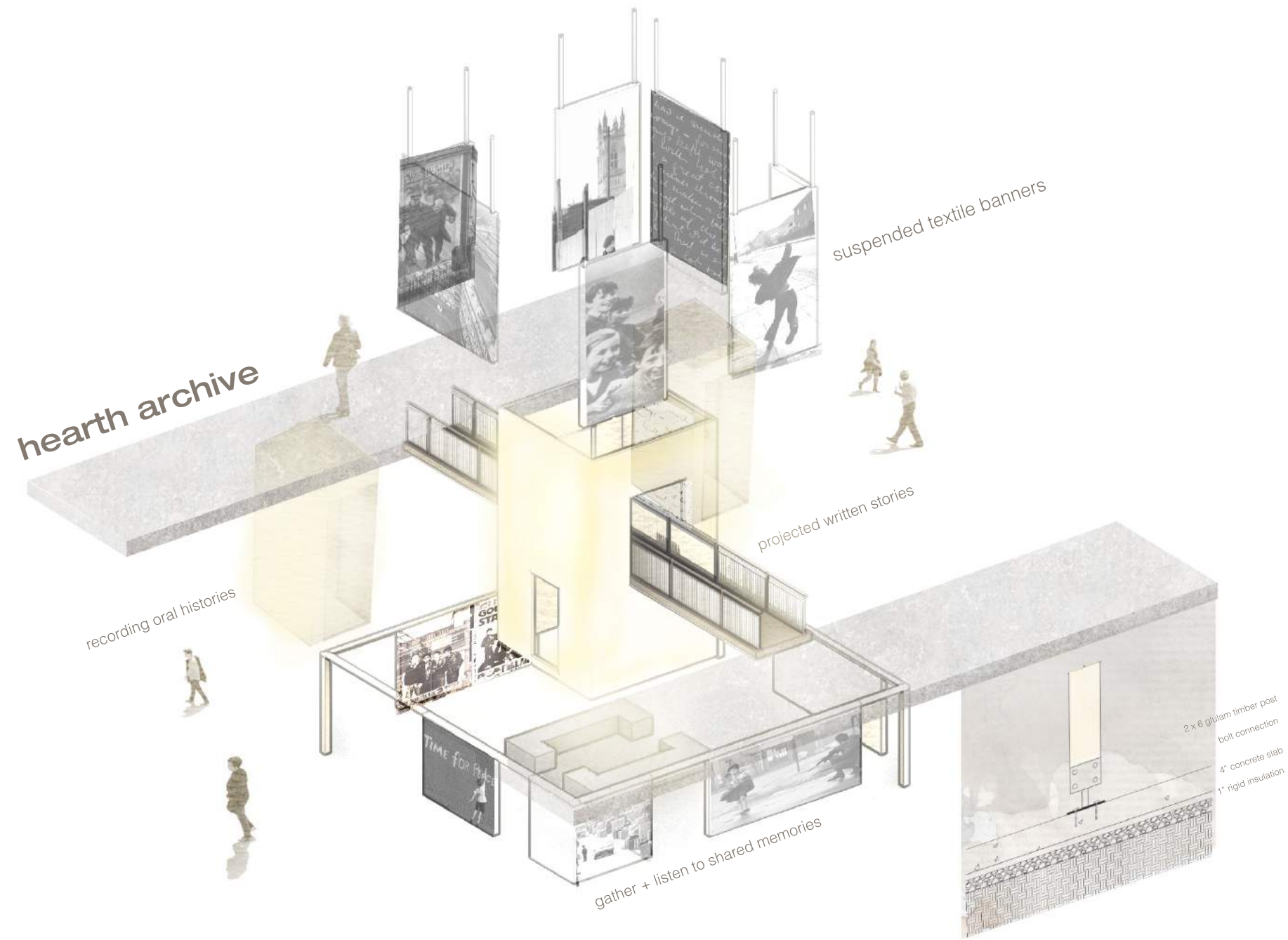
Growth is made possible by the incubator's interactive and reflective practices. It engages with the community on a macro scale, while also encouraging individual healing on a micro scale. As the user moves through the space, it transitions from a collaborative environment to a self-reflective one. An archive becomes the basis upon which to preserve and reflect the collective memory of the people it serves. By being informed by the past, they can move towards the best version of their future.





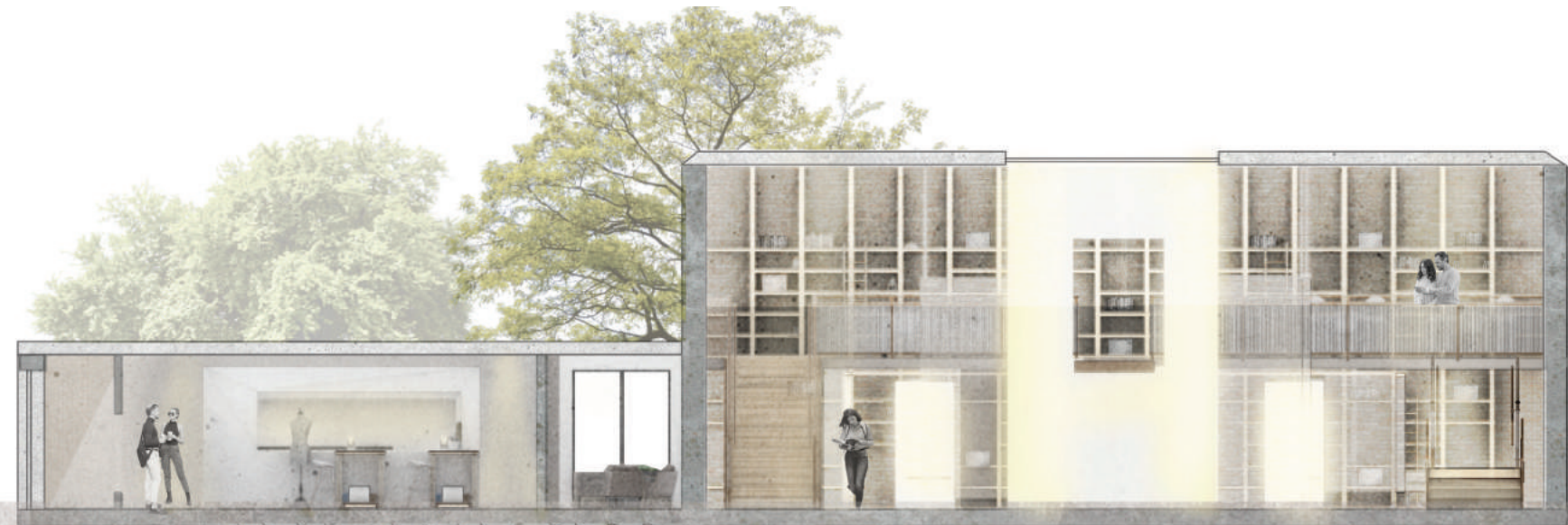








SECTION A



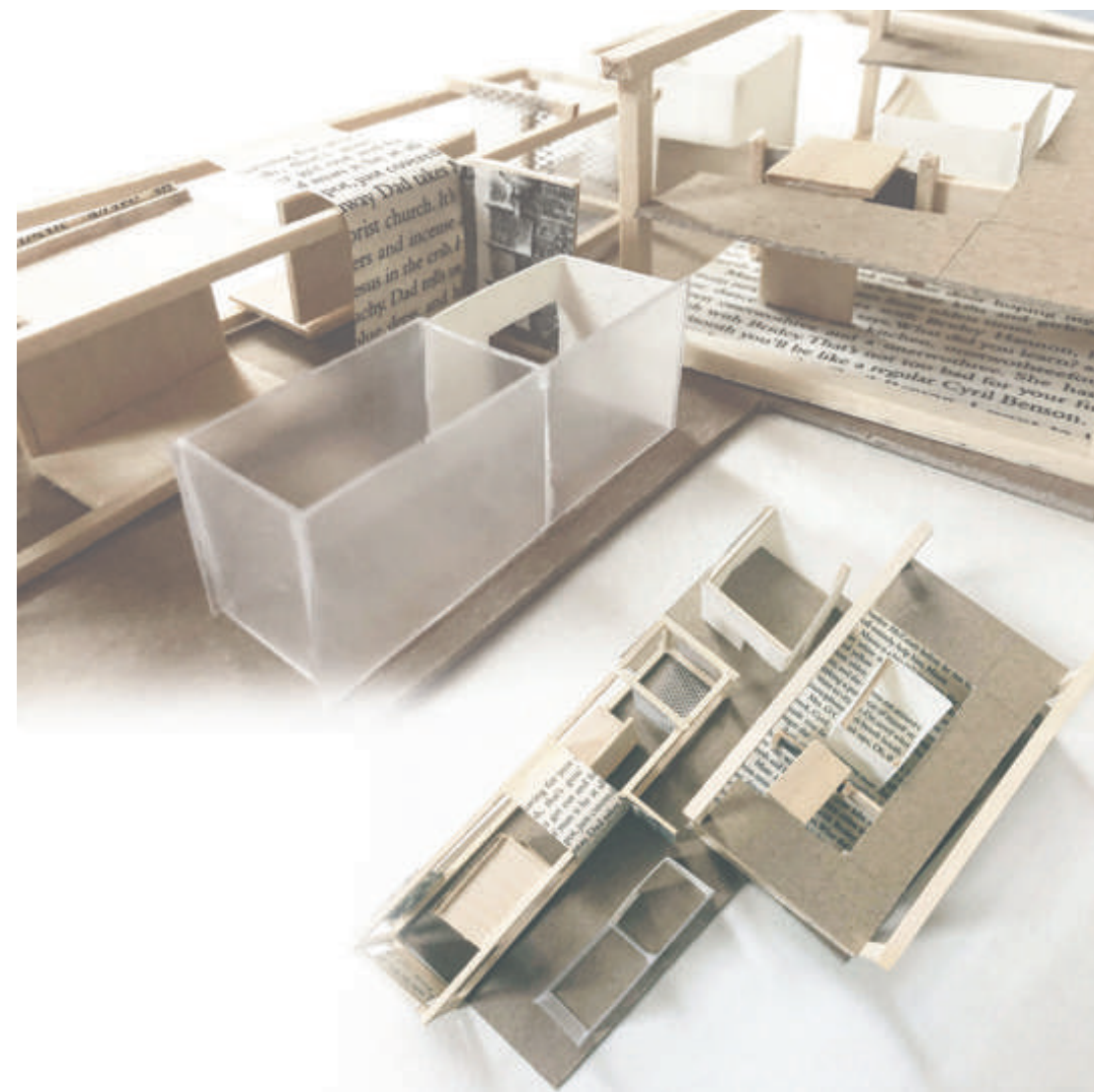
SECTION B



SECTION C



SECTION D





IFETAYO CULTURAL ARTS ACADEMY

Instructor: Jack Travis

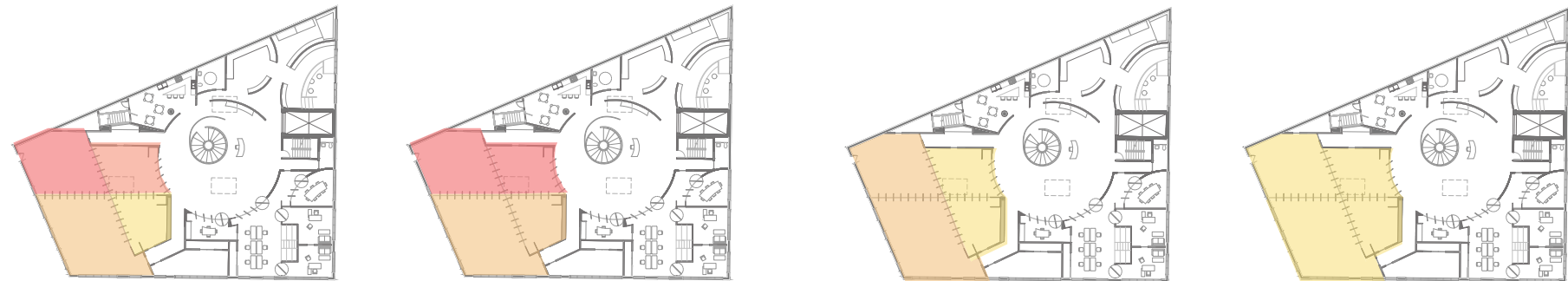
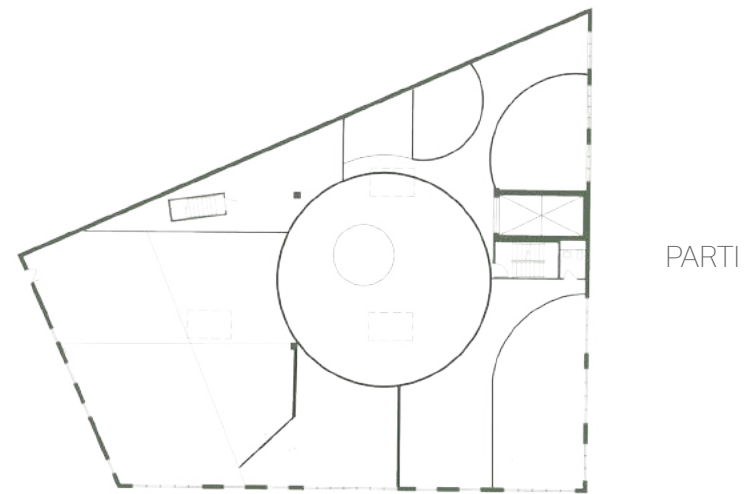
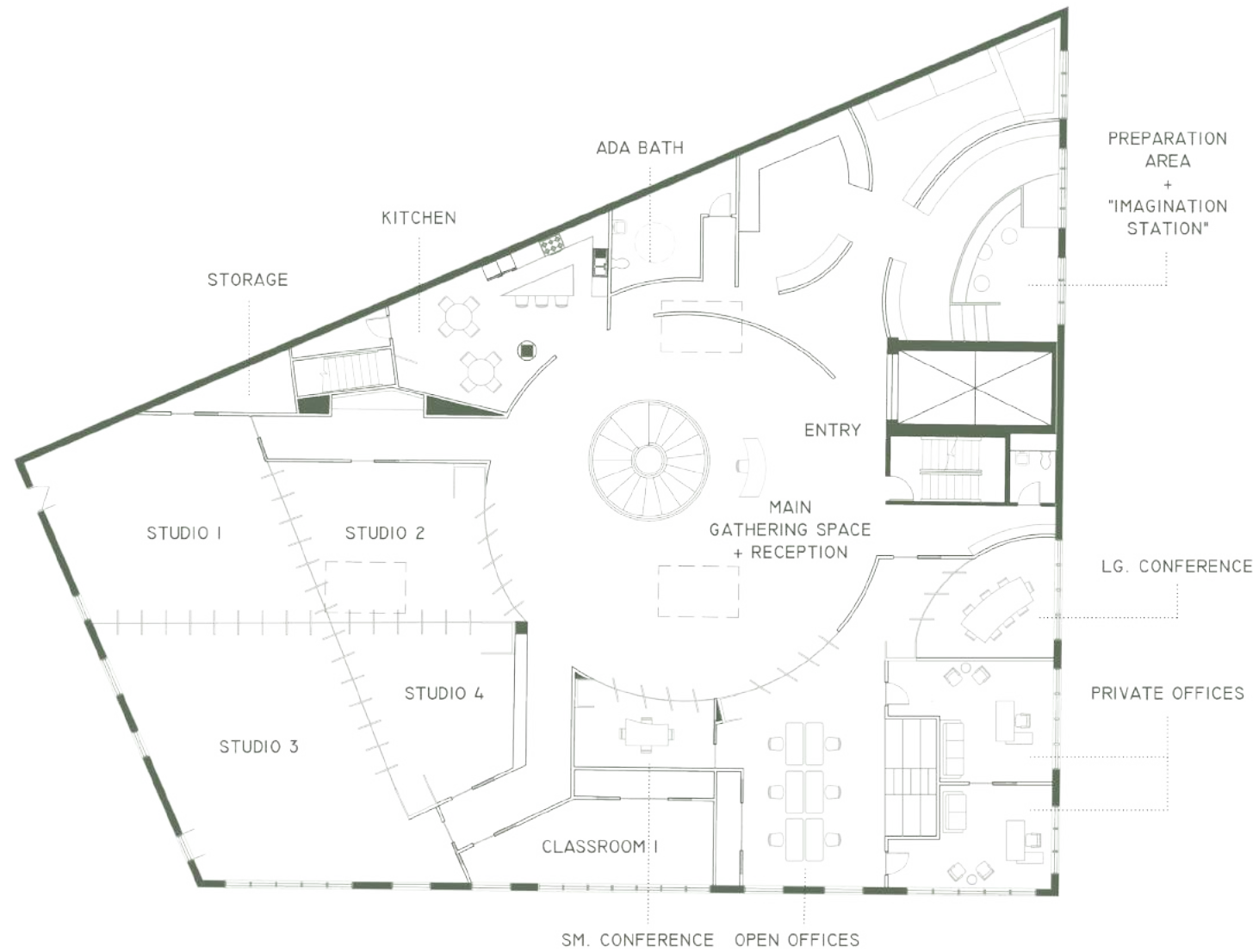
PROJECT BRIEF

This project is a renovation for an African-American cultural arts academy in Brooklyn, New York. The clients required multiple spatial configurations and flexibility for a diverse range of programs including dance, singing, art and education. A strong connection to African culture was also a priority within the organization's new headquarters.

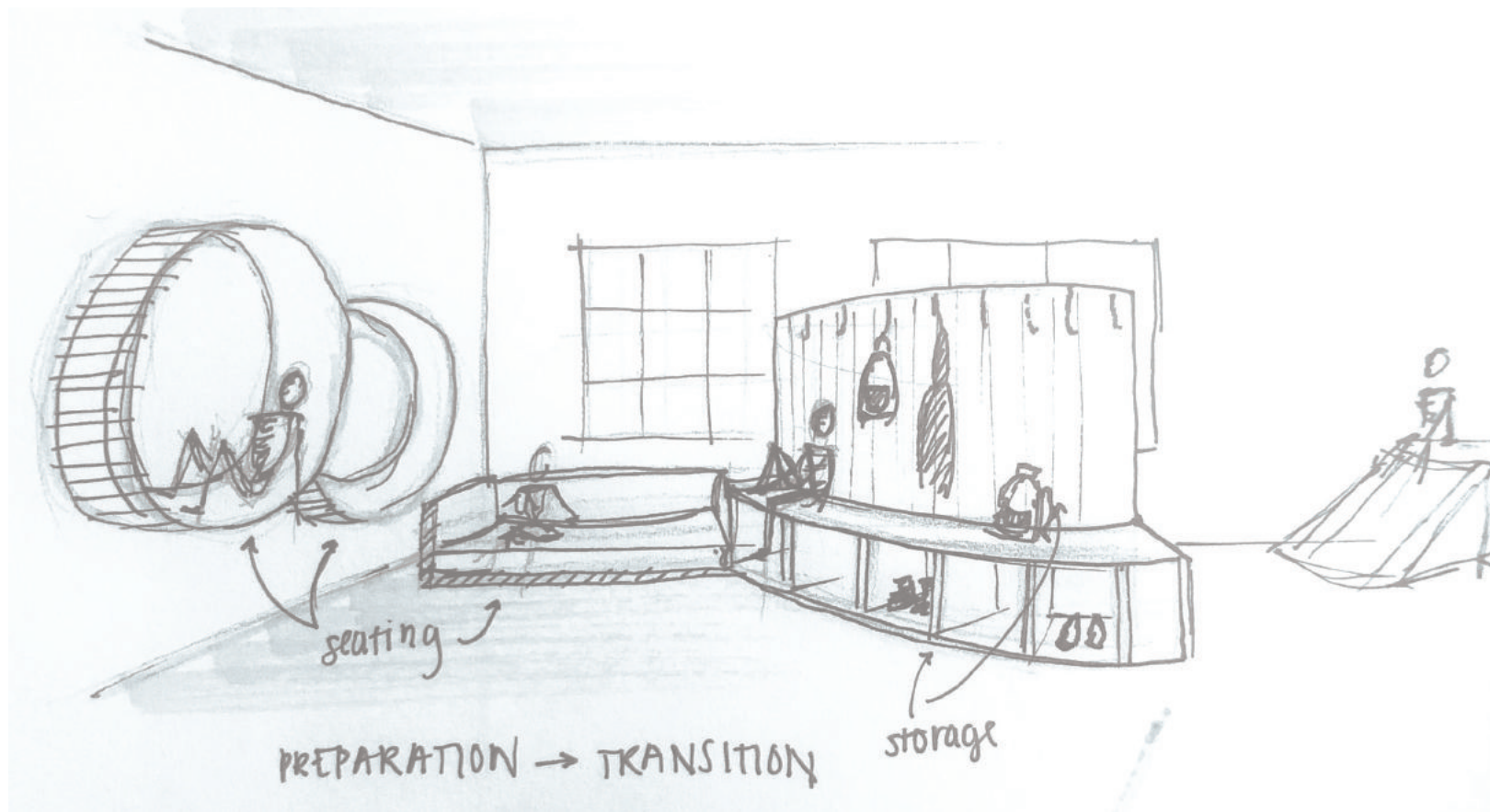
DESIGN STRATEGY

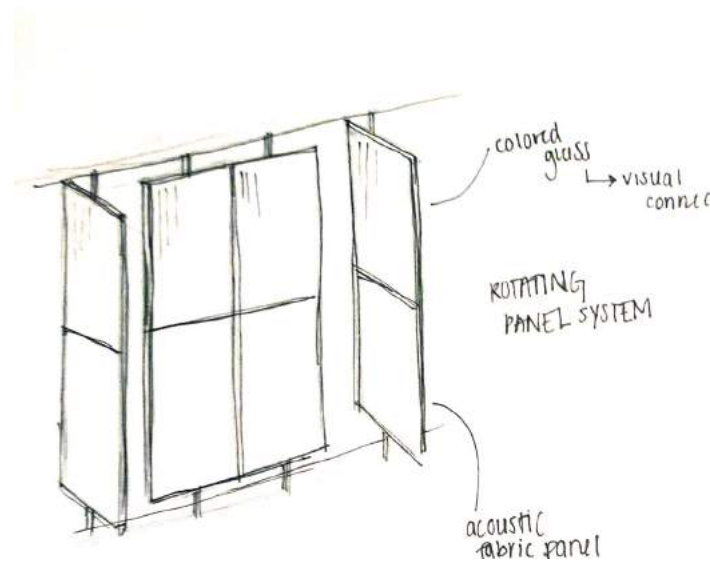
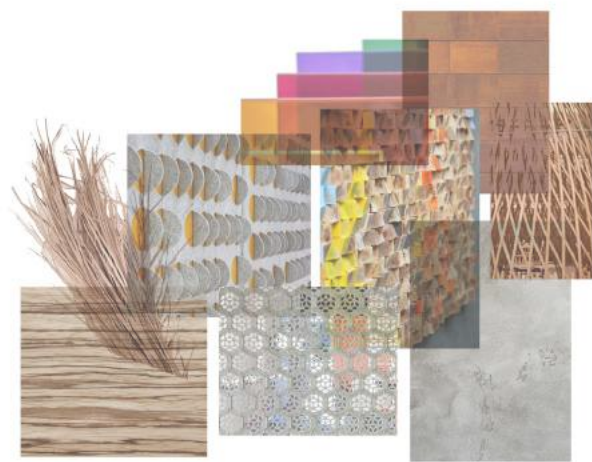
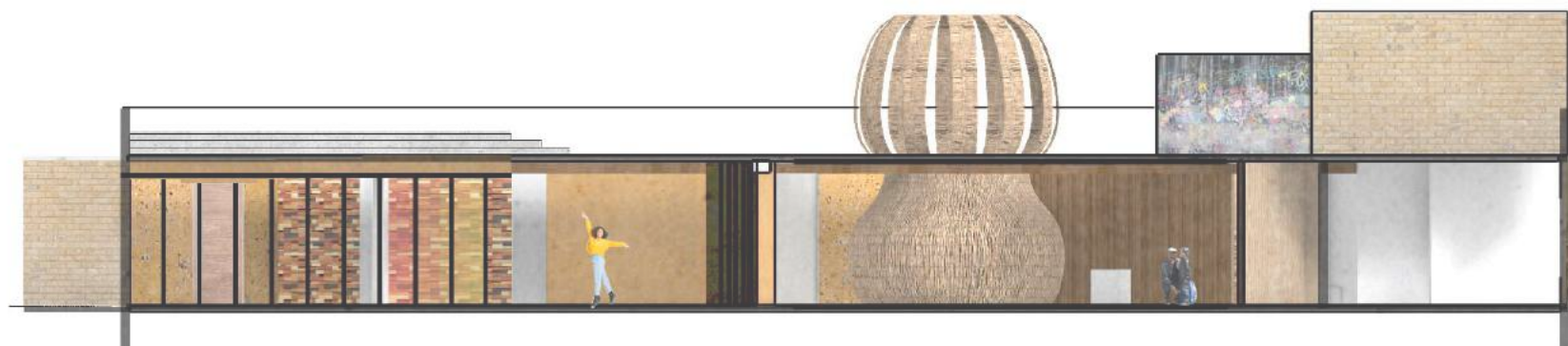
Providing a solid foundation upon which these students can form their individual and collective identity starts with addressing their most basic needs, in a place where they feel encouraged as they learn and grow. Ifetayo is a place for gathering and celebration, and a backbone for the community.





DANCE STUDIO CONFIGURATION DIAGRAMS





DANISH CULTURE HOUSE

Instructor: Birgitte Borup
DIS Copenhagen

PROJECT BRIEF

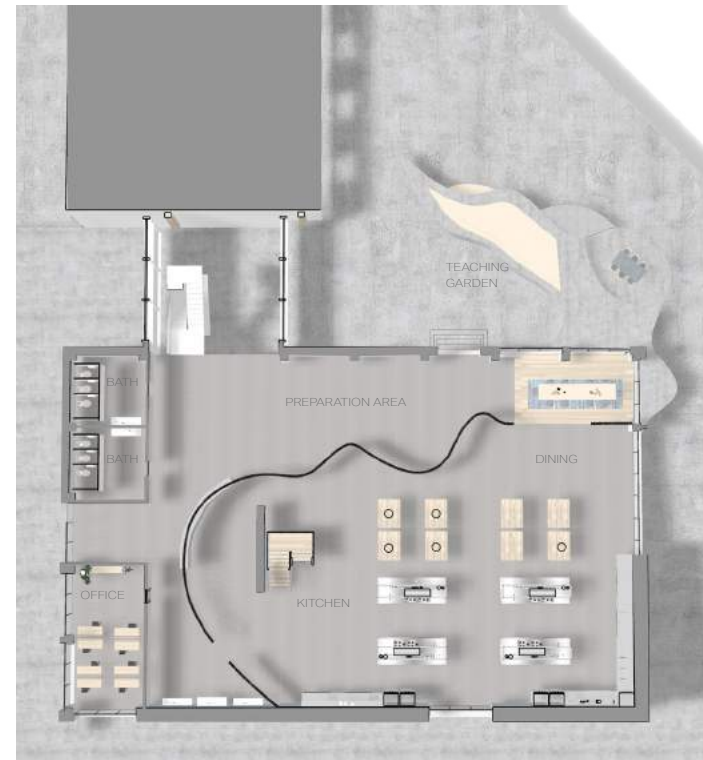
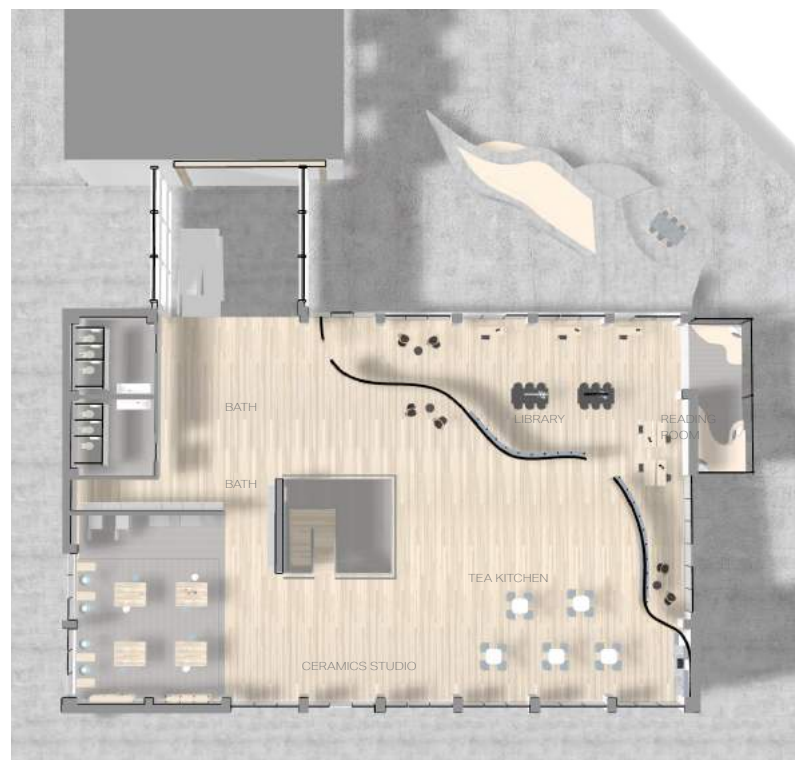
This project was completed studying abroad for interior architecture at DIS Copenhagen. This space functions as a culture house- a venue for children in Denmark to learn the importance of cooking, preparation, attention to detail, and immersion in their own culture. Programs include a full teaching kitchen to accommodate two classes at once, indoor and outdoor group dining areas, a ceramics studio to produce dinnerware for the kitchen, a tea kitchen and cafe seating area, and finally a library to house teaching materials.

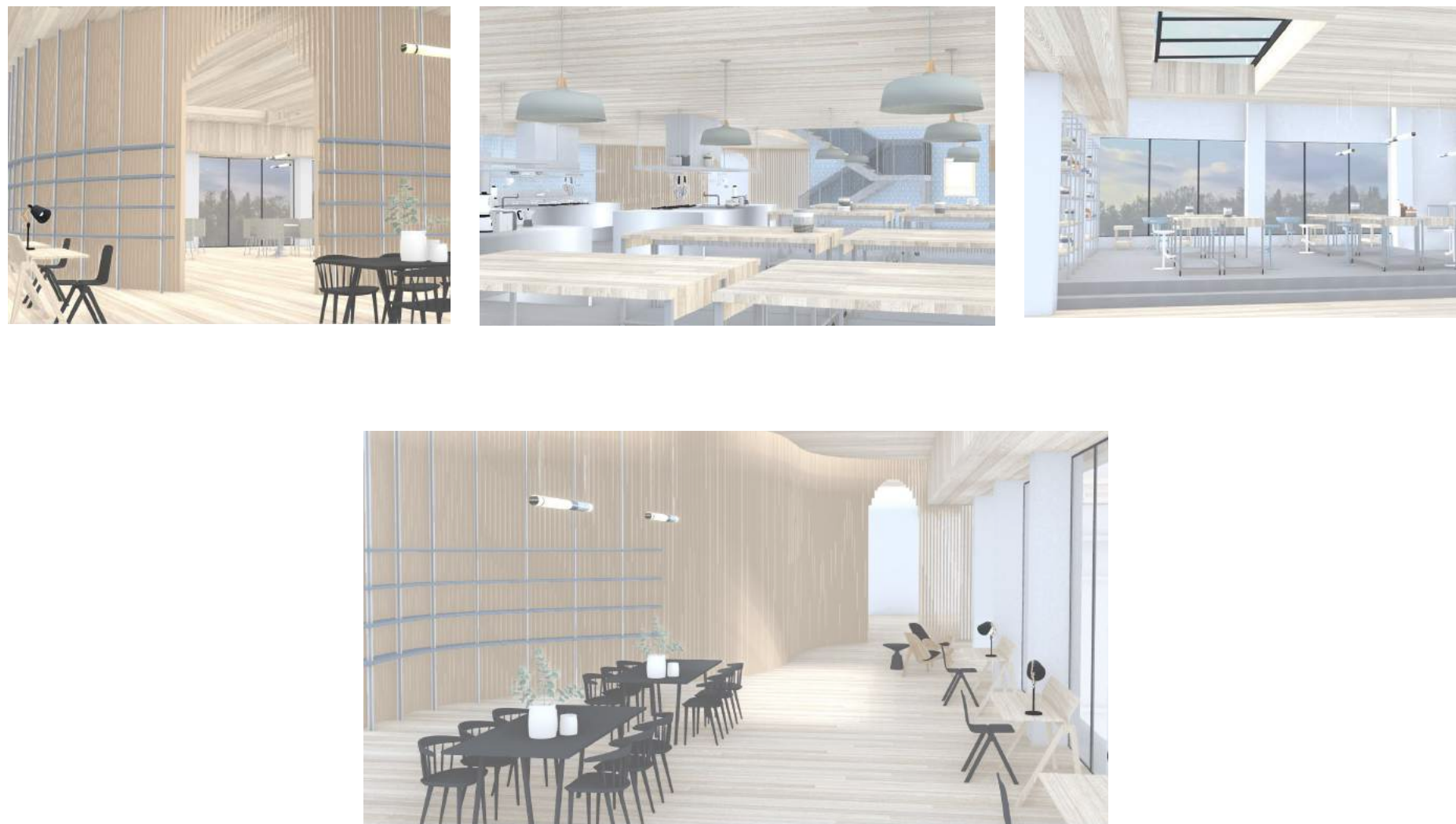
DESIGN STRATEGY

A wood slat wall weaves between each program to divide the spaces while maintaining a visual connection, reiterating the overlap between activities and the importance of every aspect of sharing a meal together.









VEILING THE UNKNOWN

Instructor: Calvert Wright

PROJECT BRIEF

This residential project was an exercise in the specific needs of an imagined multigenerational family with many quirks to accommodate. The family of four is made up of a grandmother with a sensitivity to noise, a father with a fear of windows, a mother who needs space to work at home, and a rambunctious young son.

DESIGN STRATEGY

The biggest challenge in the space was developing a panel system to cover nearly every window that would still allow for the transfer of air and light between the interior and exterior. An adjustable screen system obscures the windows while leaving them operational. The grandmother occupies the upper levels of the building, to limit her exposure to street-level noise, including access to a roof-top enclosed gardening space.









ENTWINE BROOKLYN LIBRARY

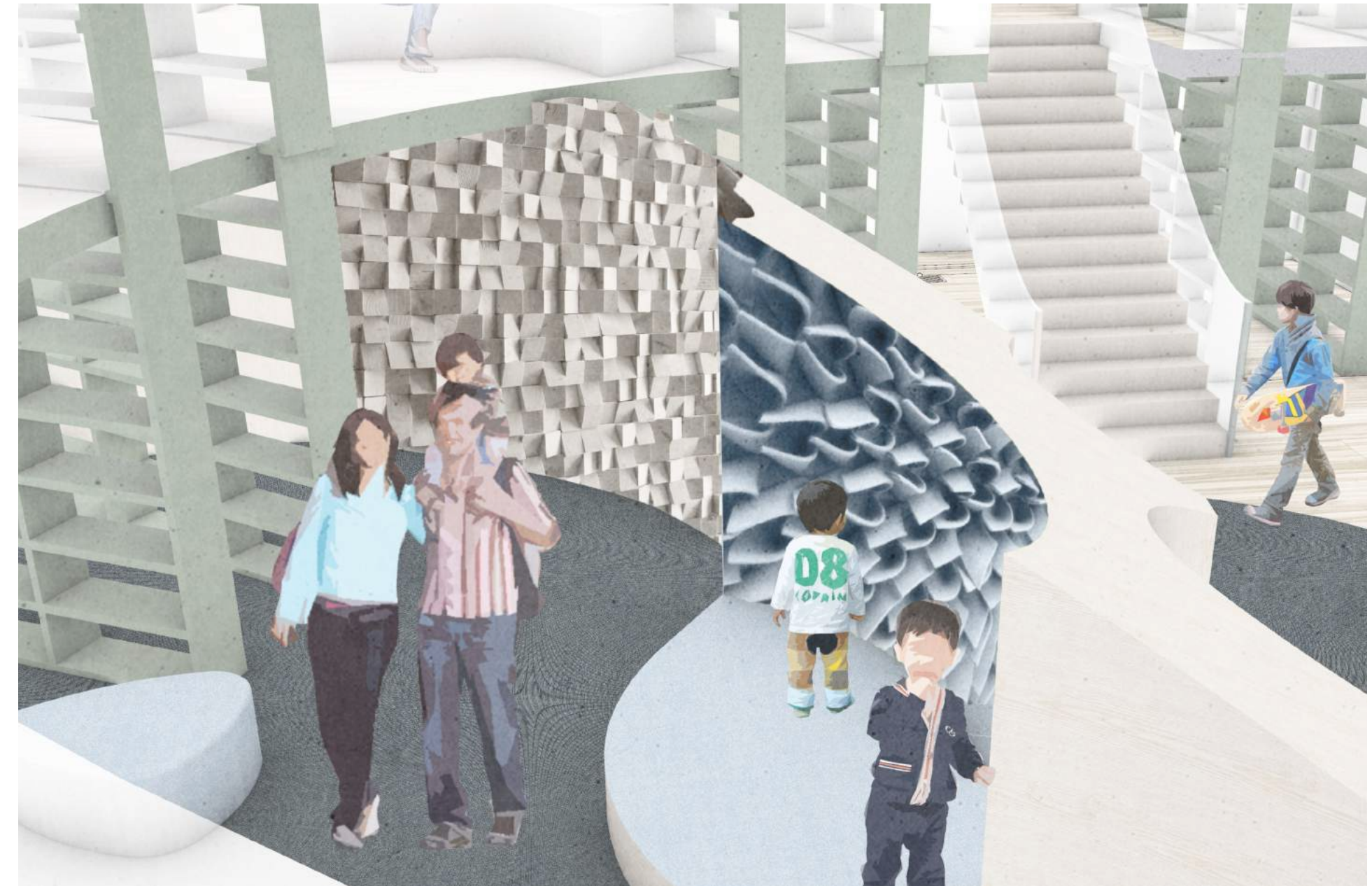
Instructor: Calvert Wright

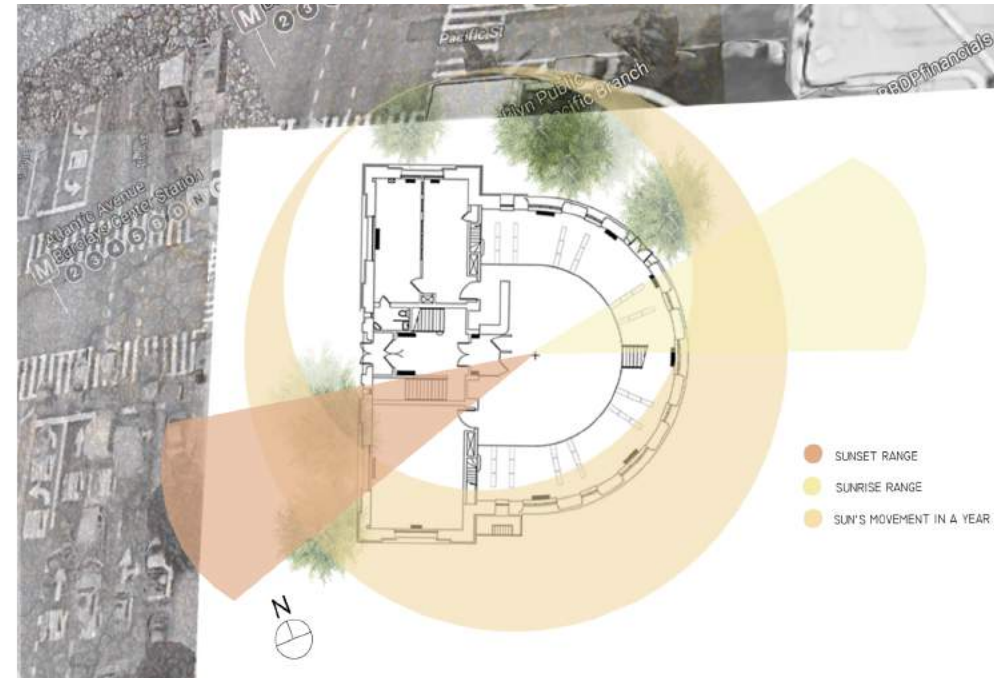
PROJECT BRIEF

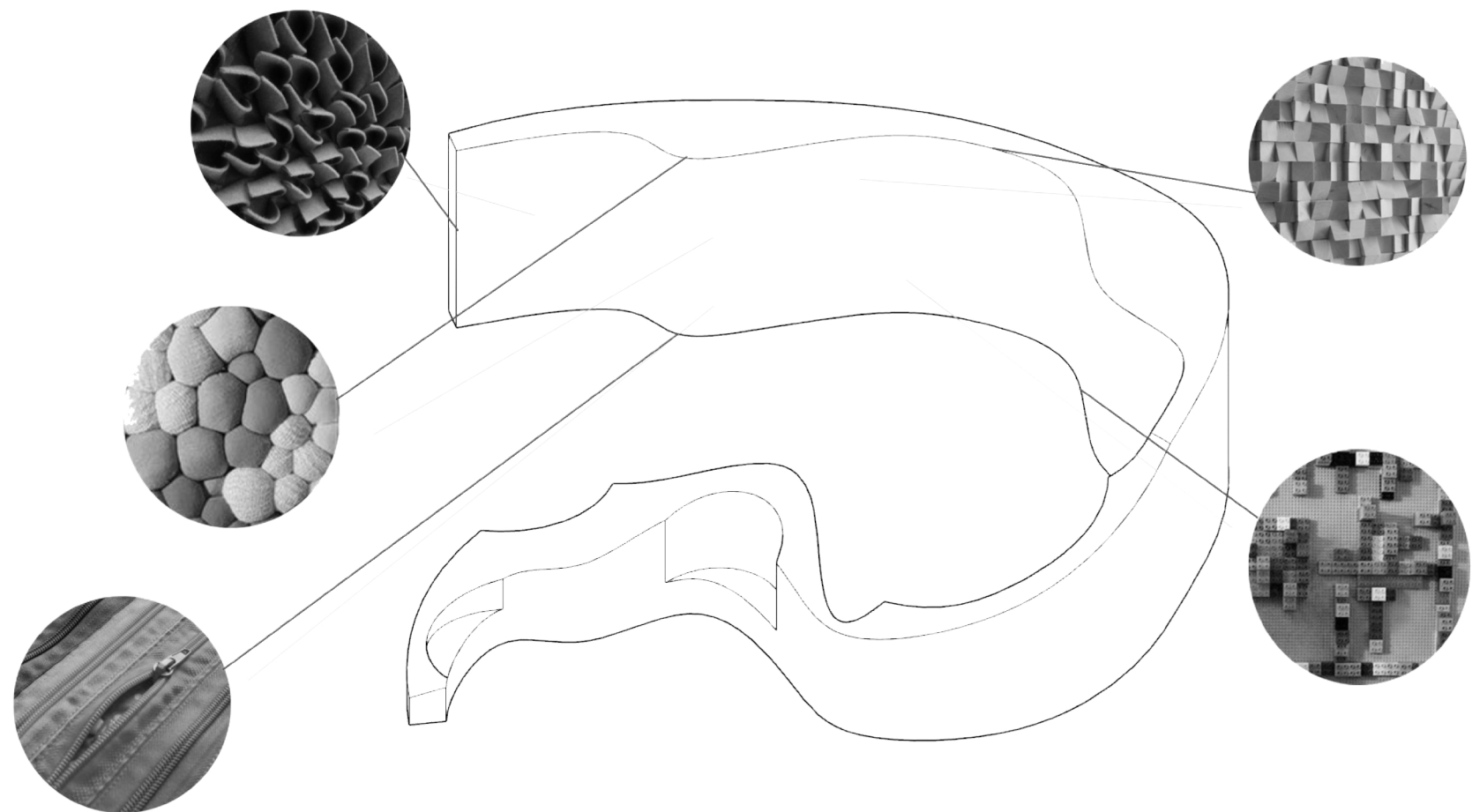
This project re-imagined a Brooklyn Public Library location as a center for family life and child development. The existing library prioritized children's programming but were limited to a small room in the corner of the library.

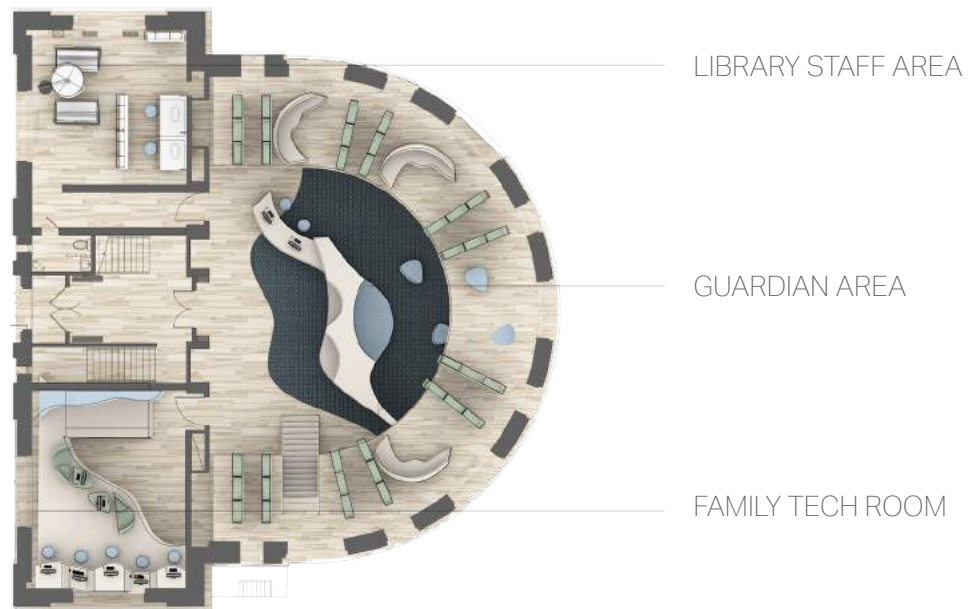
DESIGN STRATEGY

My proposal adds an organic form that transitions from a sensory wall to seating, to the main reception desk. There is also a platform for one of the library's more popular activities, storytime hour. The tactility of the wall encourages children to explore, with inspiration taken from the Montessori method of learning. The library also includes a new computer area where children can easily be assisted by a family member or staff, including a stroller storage area. The mezzanine level is dedicated to solo research or quieter activities.





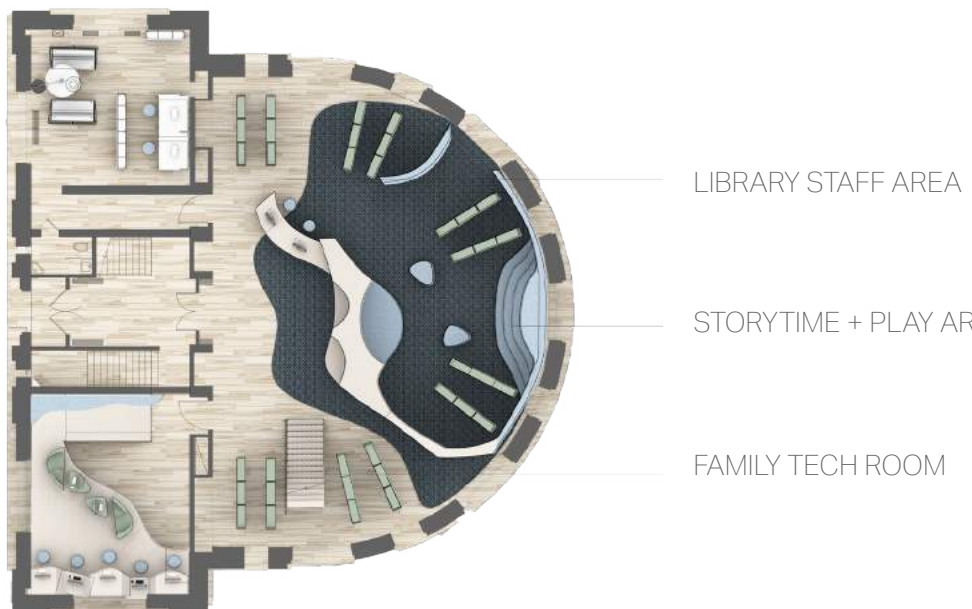




LIBRARY STAFF AREA

GUARDIAN AREA

FAMILY TECH ROOM



LIBRARY STAFF AREA

STORYTIME + PLAY AREA

FAMILY TECH ROOM



GROUNDING THE CAUSEWAY

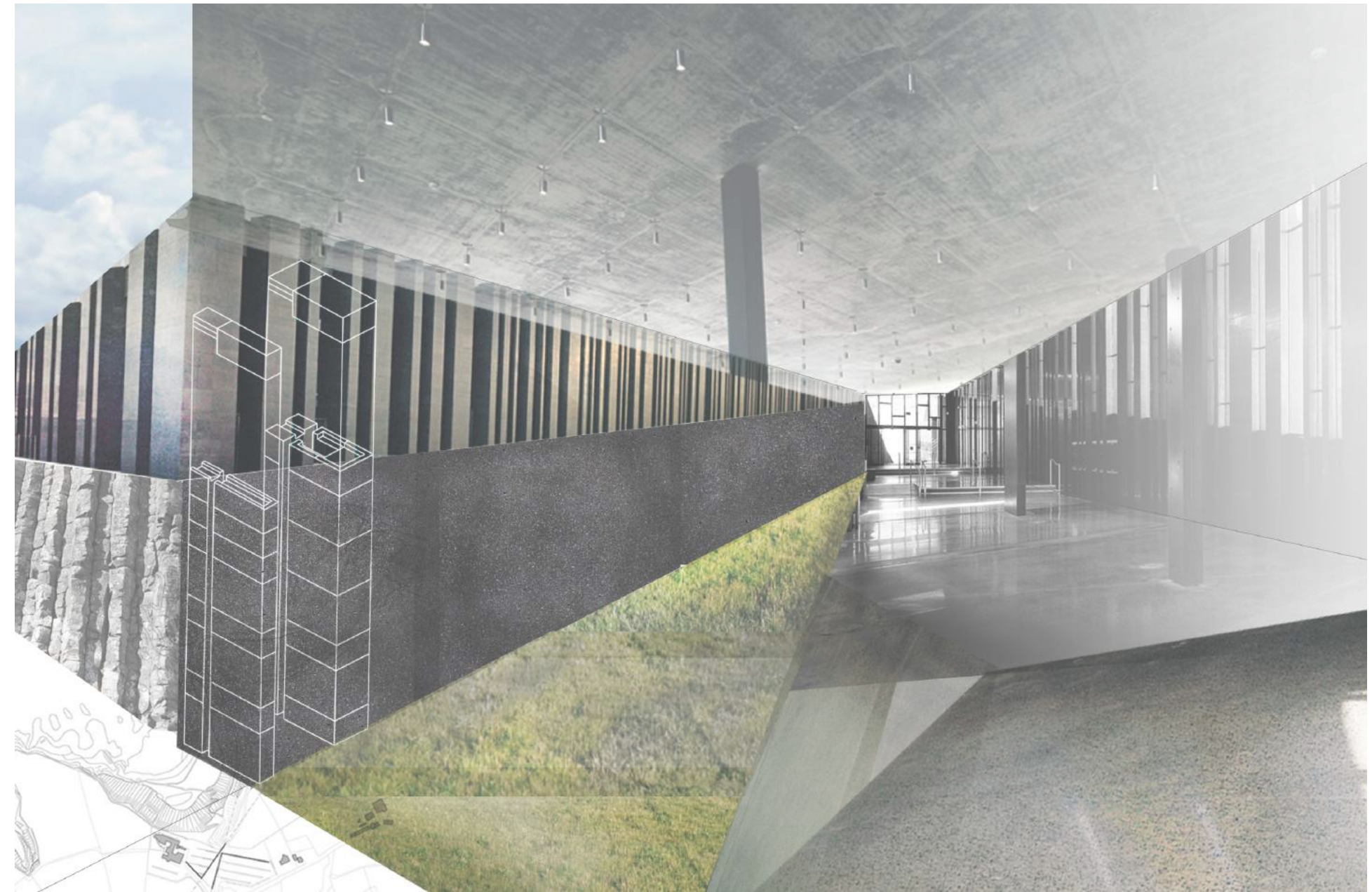
Instructor: Karin Tehve

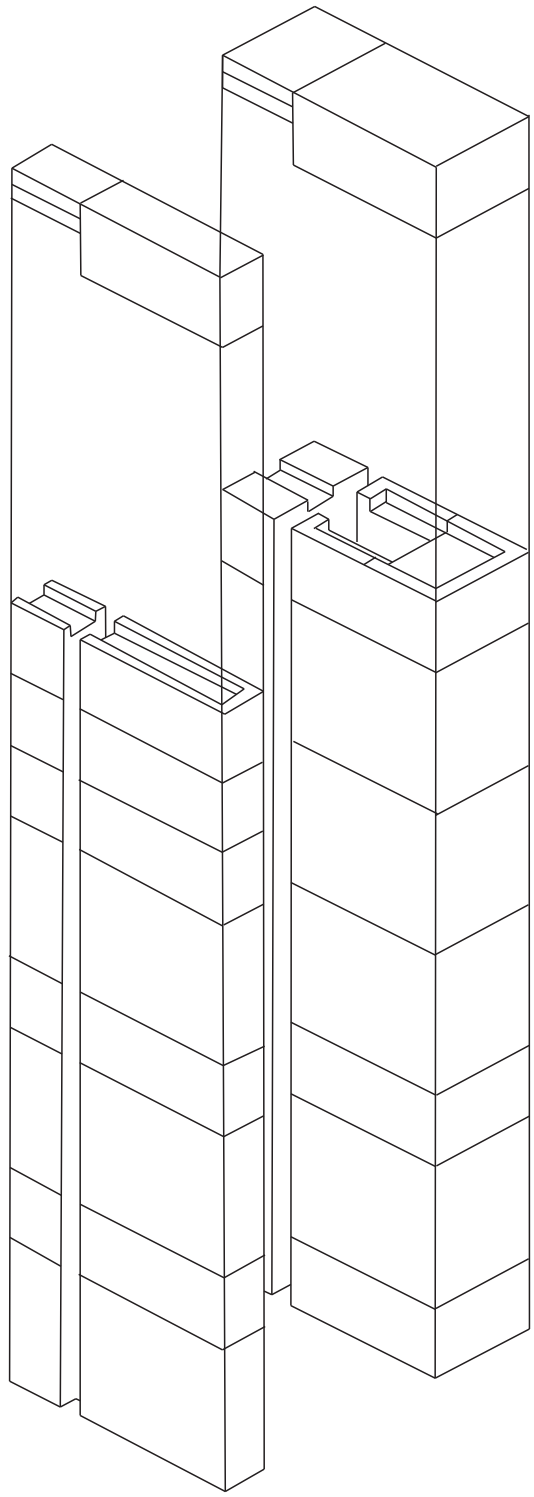
PROJECT BRIEF

This drawing was the result of a materiality and detail study of the Giant's Causeway Visitor's Centre, Co. Antrim, Northern Ireland. The centre emerges from a cliffside overlooking the causeway itself. The materiality references the form and texture of the famous basalt columns, reflected on the interior and exterior of the building.

DESIGN STRATEGY

My drawing highlighted the basalt material and concrete that makes up the basis of the project, alongside the natural structure of the stone that dictates its final form.





HENEGHAN PENG ARCHITECTS

