



CHUN

2021

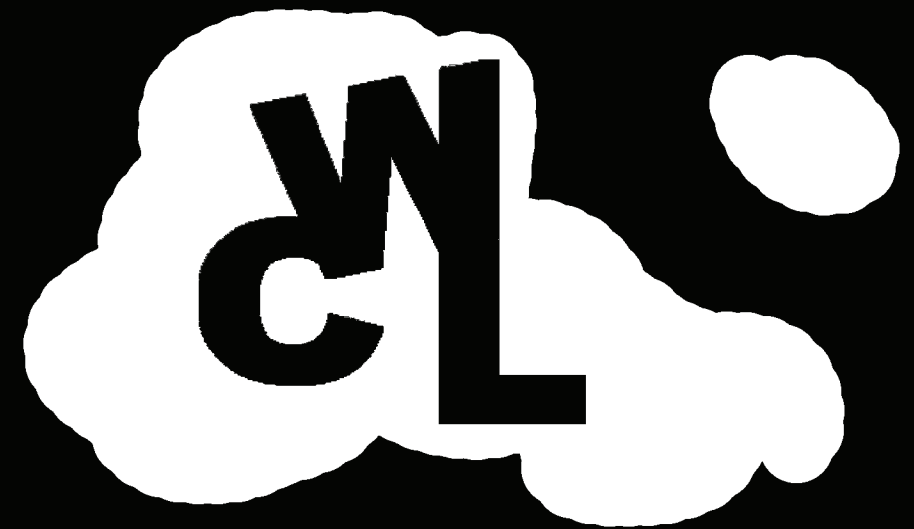
wai

wai

portfolio

wai

LEUNG



Chun Wai Leung

Interior Design



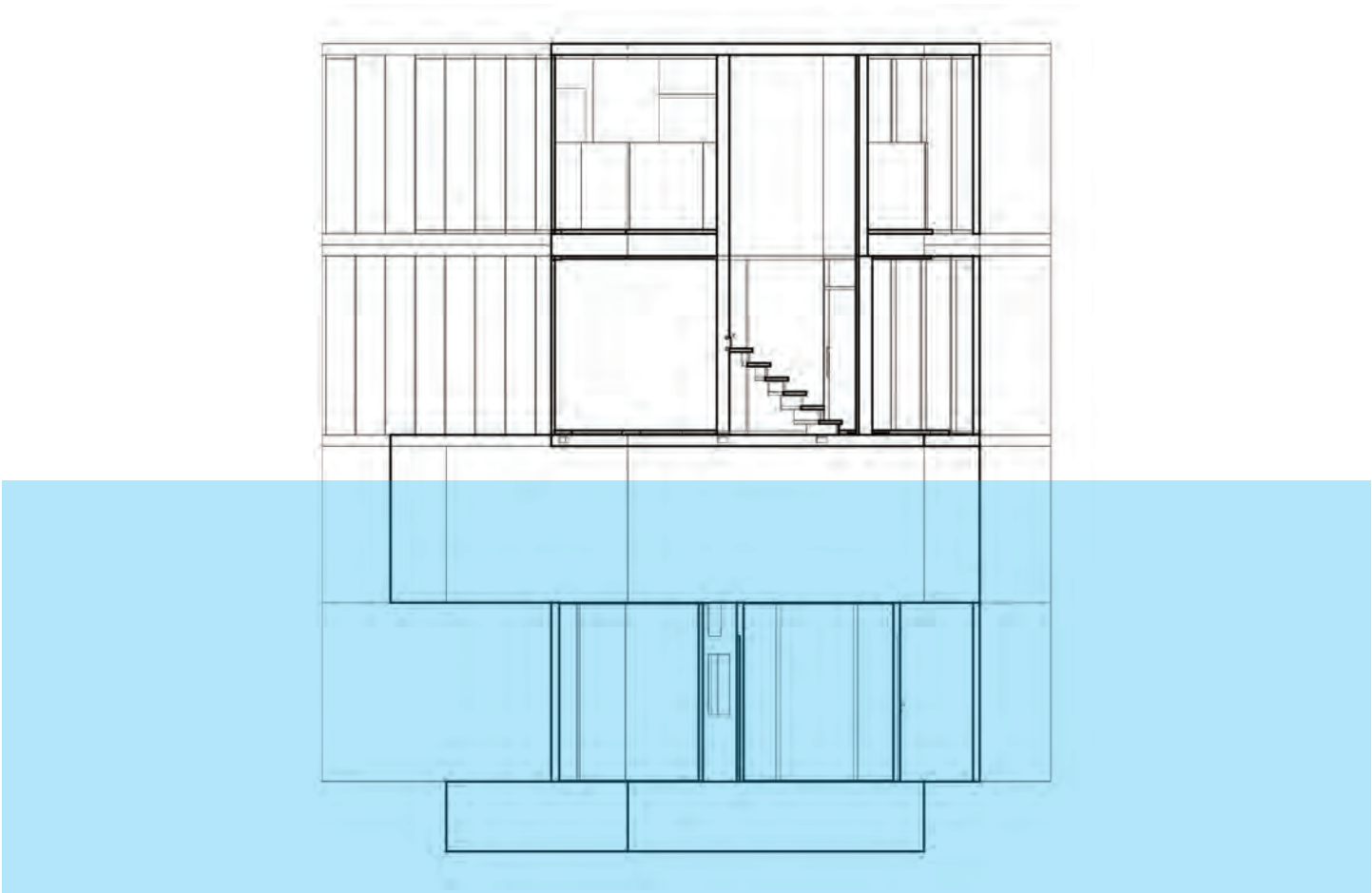


diving house

With global warming, the rising sea level makes people unimaginable the possibility of living at sea. The floating house was designed by me for future clients. This design highlights the combination of sports and water. Diving is my main source of design and it runs through the entire house. This design encourages users to exercise and explore the deeper side of the ocean from the connection between diving and life.

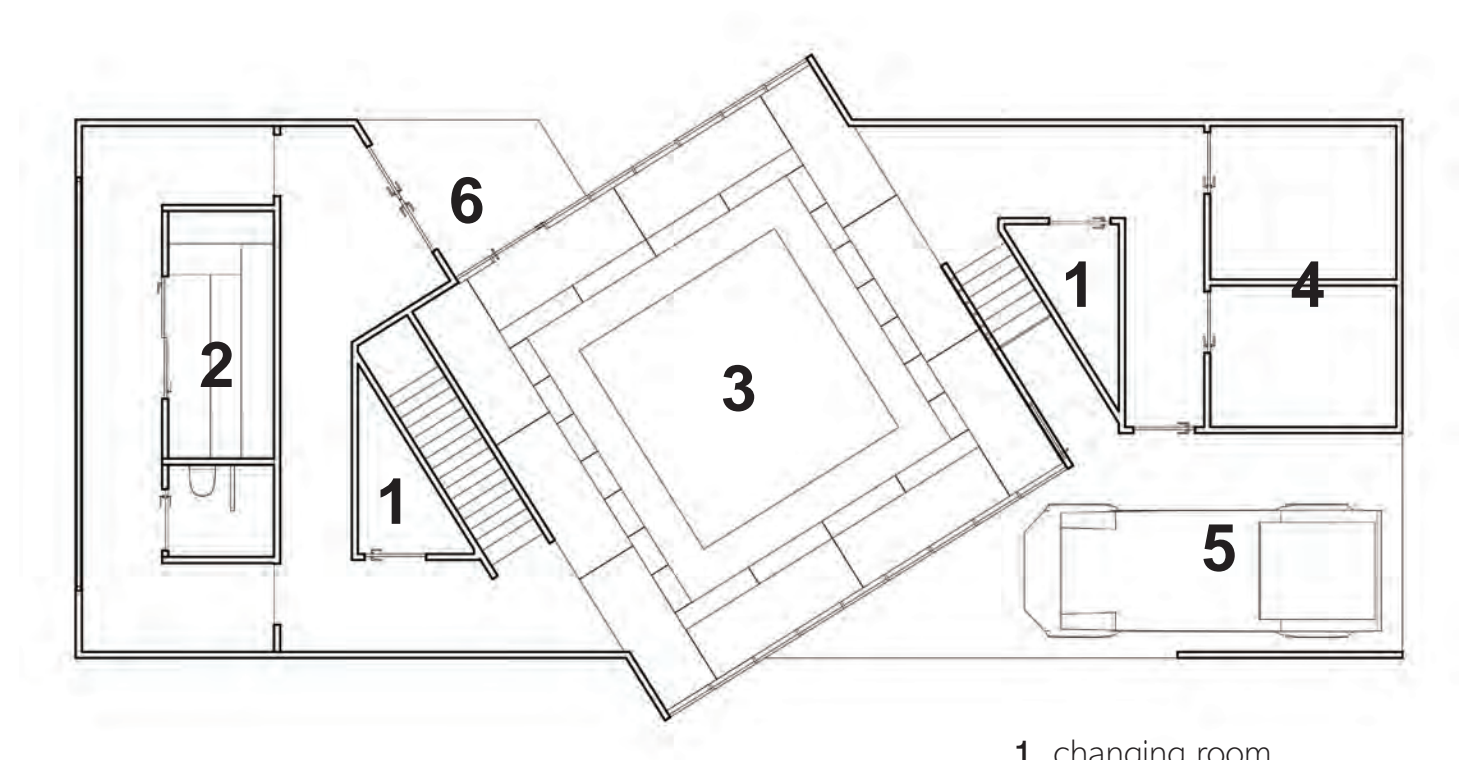


Section





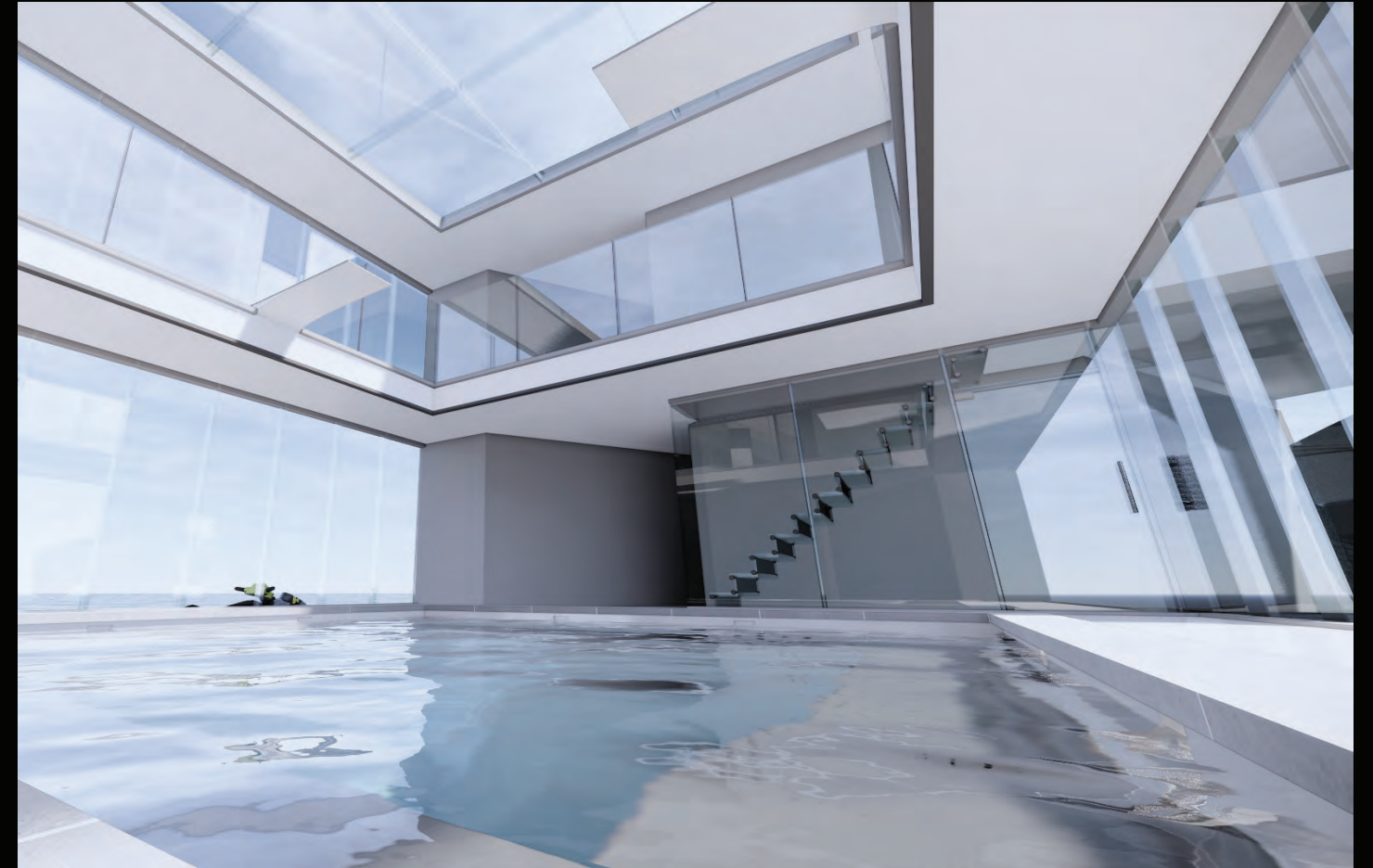
1st floor



- 1. changing room
- 2. sauna room
- 3. diving & bath
- 4. storage
- 5. parking
- 6. entrance & exist



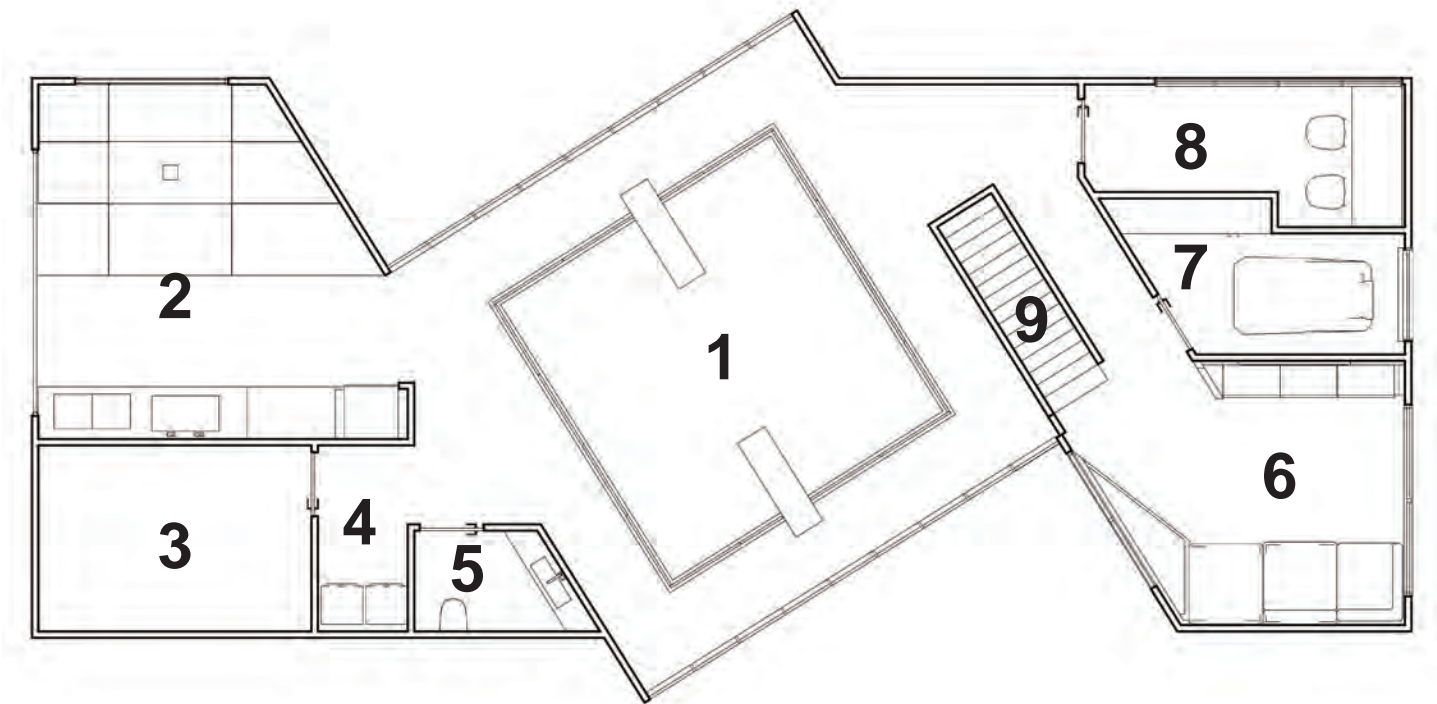
Clothes changing areas on both sides of the diving and bathing areas, making it more convenient for divers to change clothes and store things.



The first floor mainly focuses on rest and relaxation, such as sauna and onsen. The main circulation will pass through the diving area, allowing users to watch the diving process while passing by.



2nd floor



- 1. diving area
- 2. dinning area
- 3. storage
- 4. laundry area
- 5. toilet
- 6. living room
- 7. massage room
- 8. office



The design of the dining table comes from the Japanese tea table. The up and down telescopic table can save space very well and also play a versatility in use. The table seats are storage cabinets that can be opened, which can provide people with more household.



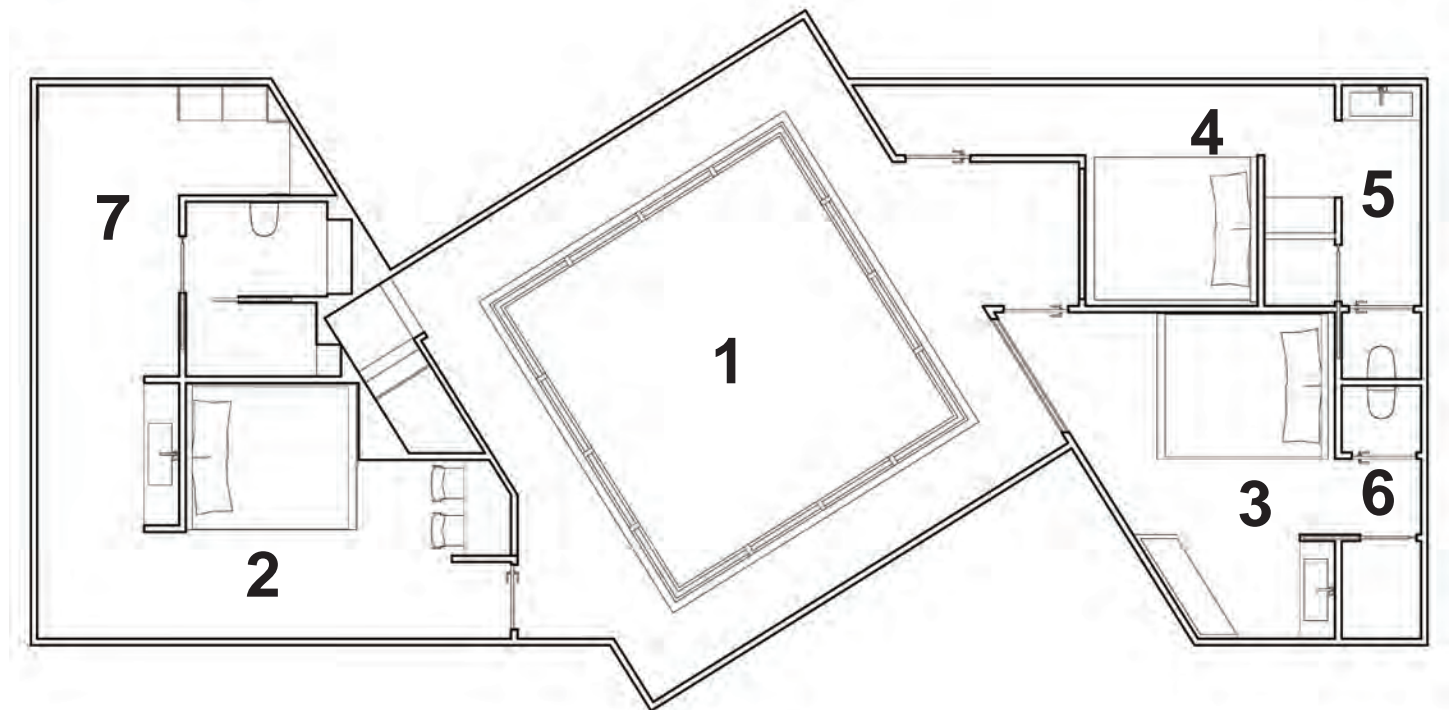
The second floor mainly focuses on diving and public places. The jumping place is continuously up from the first floor, surrounded by the user's circulation. This floor is at the top, so when guests or users themselves can see a better sea scenery during the rest. A large number of windows increase the light projection and allow users to feel the connection between life and the sea all the time.



Self built desk for saving the space for storage also built in to the wall to avoid the shaking effect while living on the ocean. The long window provide better opportunity for the user to relax and enjoying the view while working



-1st floor



- 1. underground swimming
- 2. master room
- 3. child room
- 4. guest room
- 5. bathroom
- 6. bathroom
- 7. bathroom



Every room can see the process of diving at any time. Through the glass, they can achieve a visual communication with people who are swimming and diving. The variable transparency of glass provides a very open space without lack of privacy.

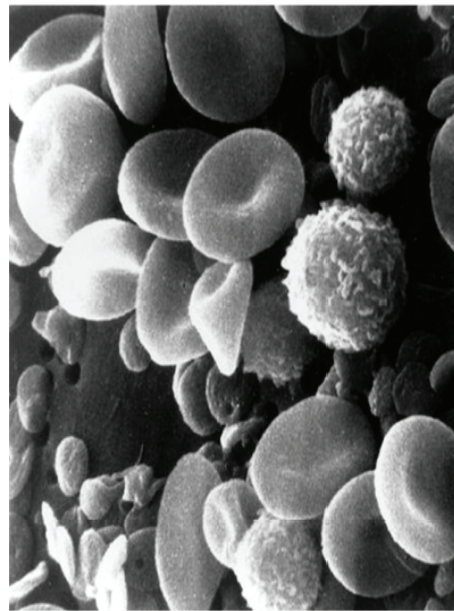


The -1 floor is focusing on user's private living space. One master room for the parent, one room for the child and one for the guest to stay. The diving theme connects with people's living. Users can watch the diving movement while inside the room. The glass is semi transparent which can turn in to private mode while it is need it.



distorted library

Due to the demand for workload often make the worker feel tired in space from visually. The design goal of this office is to make the space more rhythmic from the interior, so that the people working inside can also bring visual freshness while working. The inspiration for the wall comes from the division of cells, which reminds me of the job assignment scene in the company. The wall, which seems to be twisting, allows people's vision to continue outside the window to relax their vision. The entire space also has good light permeability, and enough sunlight can be obtained in each work area.



Inspiration:

Cells divide from one body to multiple bodies, fissioning into different individuals in different forms with the same body. The process of cell division reminds me of designing space. If people and space are integrated, then the wall is a division of them. And this separated existence has similarities with people and space, but there are differences.



Diagram:

Based on the investigation of cell division, I designed a preliminary diagram, using layering to express that cell division is different and the same between individuals and splits. If the front layer and the back layer are two separate individuals, then the place where their colors intersect is their connection. When they meet together, there is a kind of cross, but at the same time they have a certain kind of special connection.



Curtain:

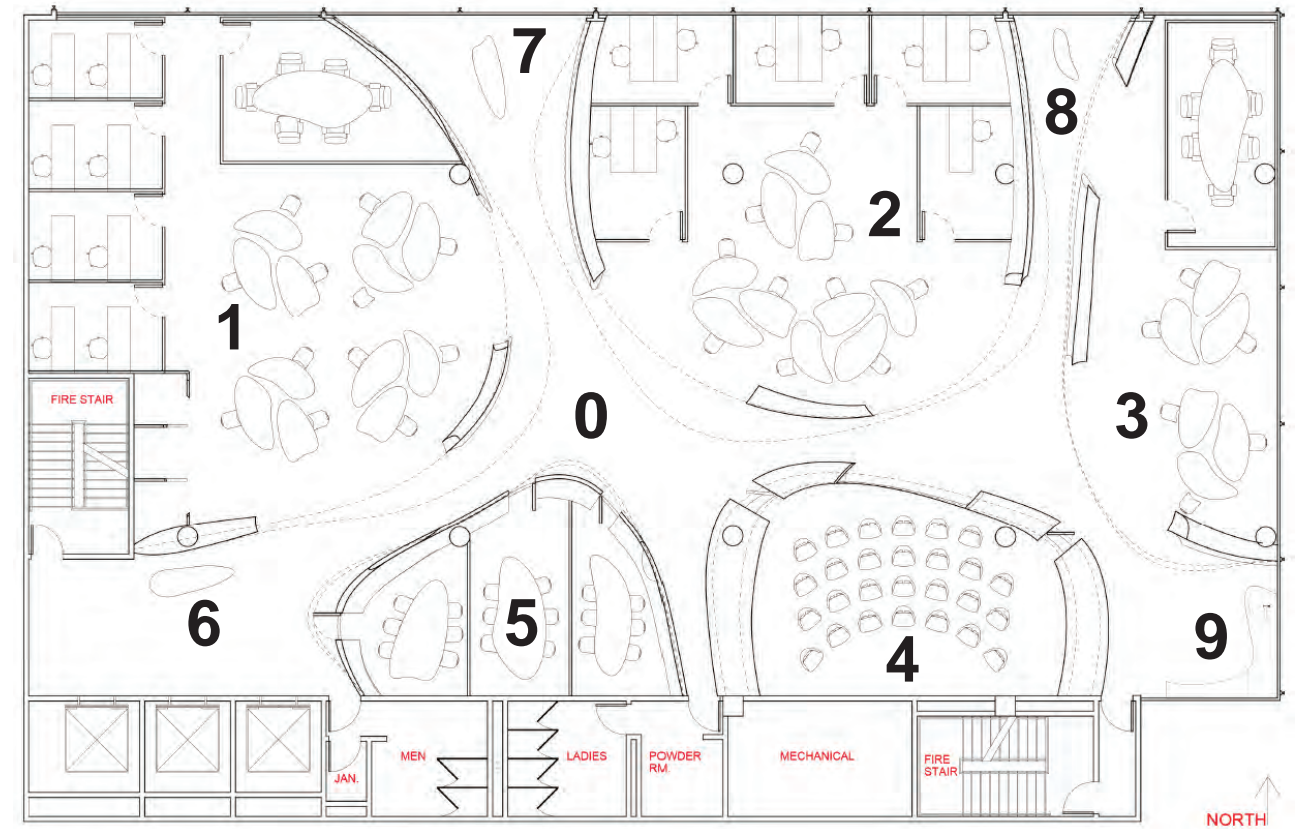
Curtain design is one of our early requirements. From the curtain to study and feel the needs of people in the space. Different functions are considered when making curtains, such as thermal, ventilation, and natural light. I extracted the patterns and symbols from the previous cell division diagram in my curtains. I look for the use of curtain function in the pattern. For example, the overlapping position is more light-blocking, and the single-layer position is more ventilated.



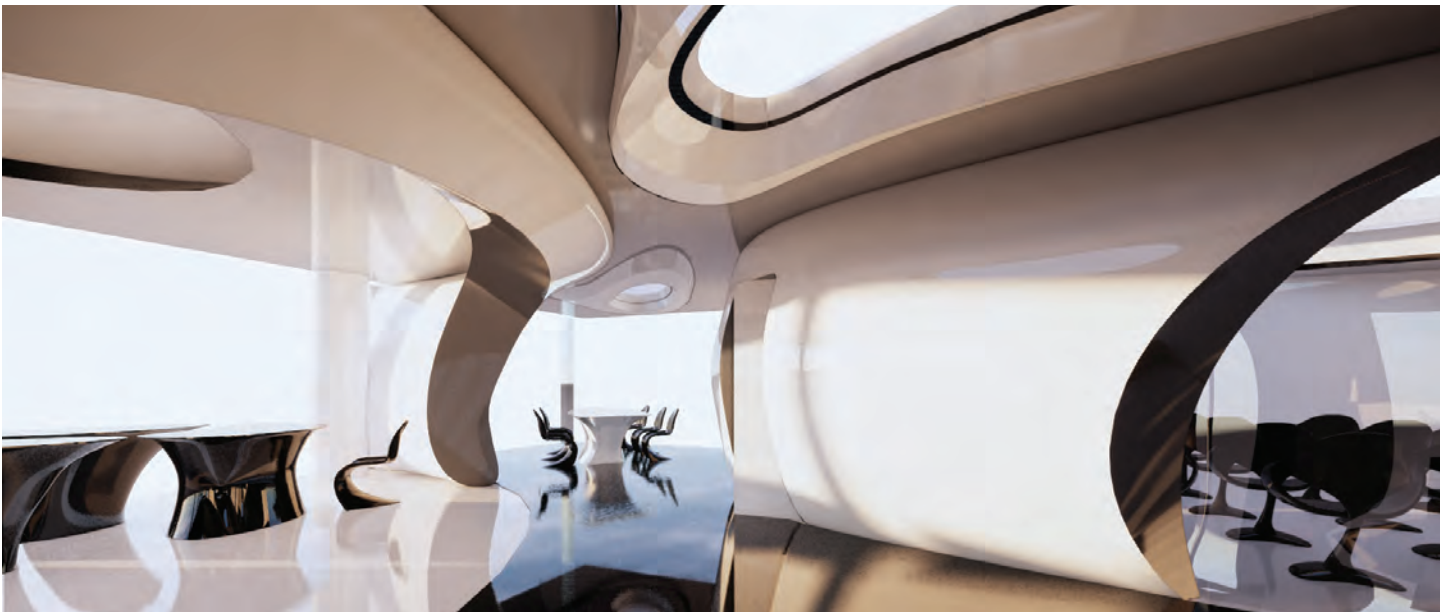
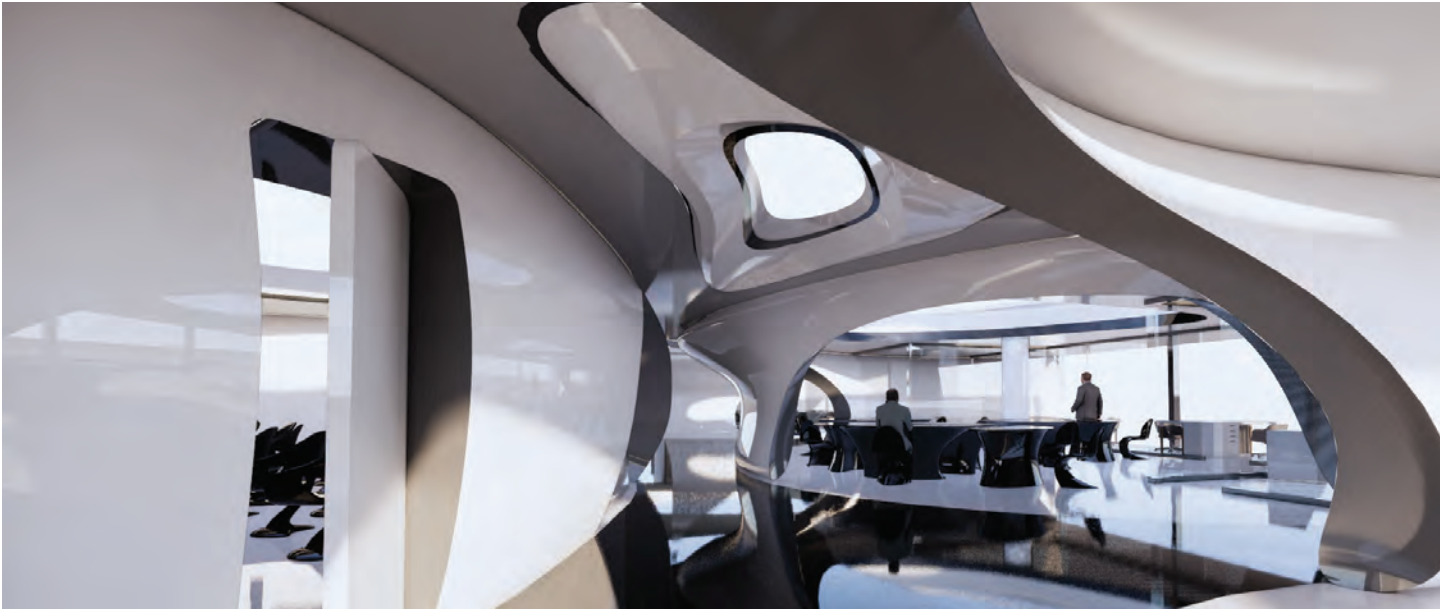
From cell division to the making of curtains, I learned the distortion of cell division and applied it to my design. According to the user's circulation and programs, an initial diagram is formed to feel the connection between the user and the space. The wall and the circulation of the user are on the same path to arouse a sense of communication between people and space. The design of circulation has four convergent marks, and circulation itself draw the relationship between people.



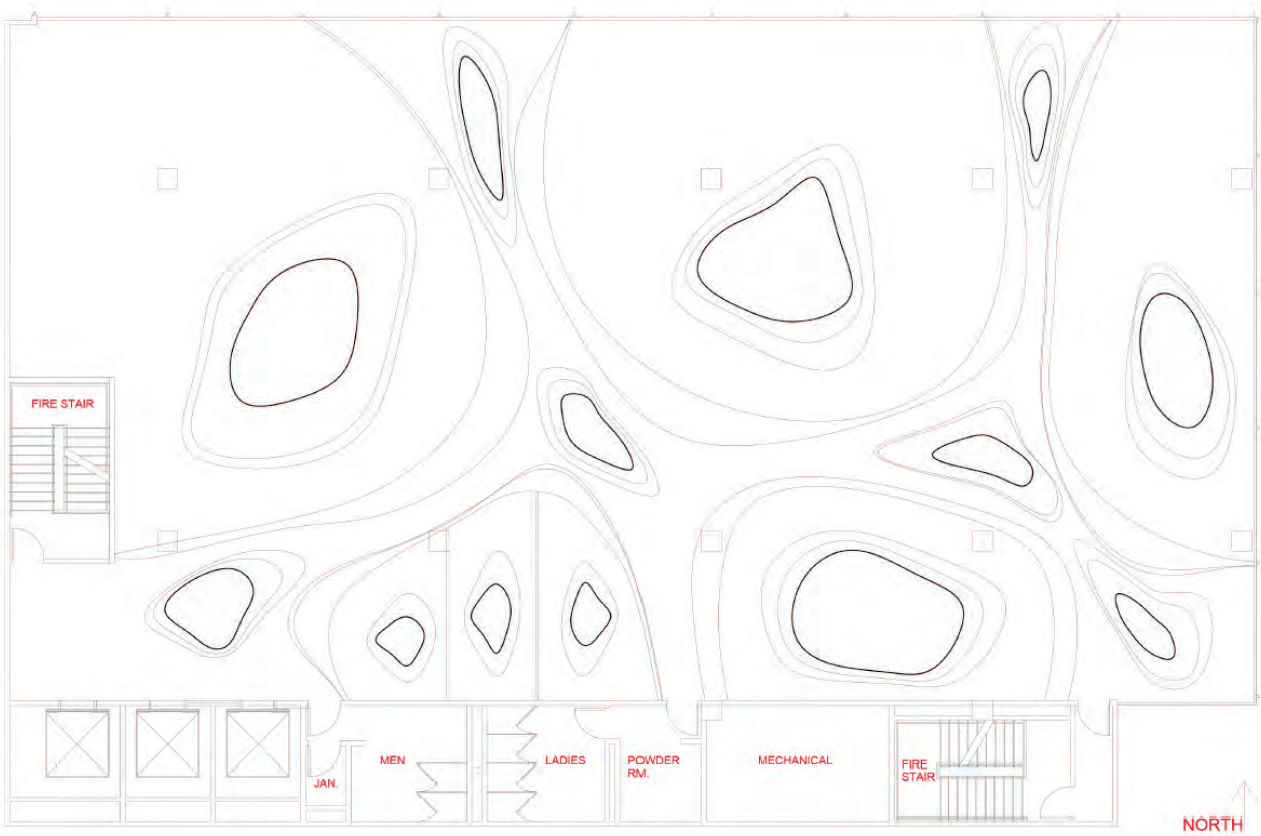
floor plan



- 0. main circulation
- 1. working area 1 (*public seating, meeting room, private office*)
- 2. working area 2 (*public seating, private office*)
- 3. working area 3 (*public seating, meeting room*)
- 4. lecture room
- 5. class rooms
- 6. front desk
- 7 & 8. public resting
- 9. eating

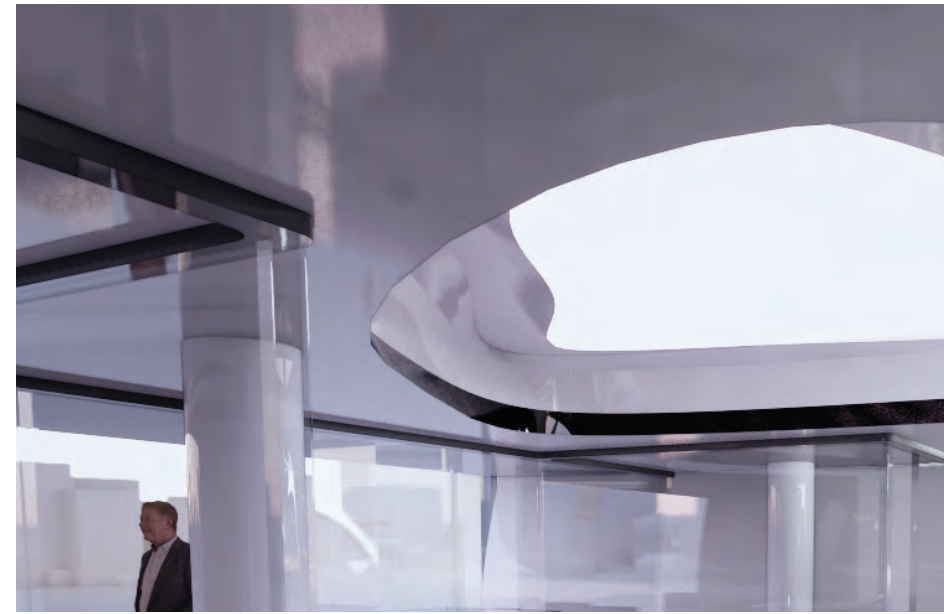


ceiling RCP



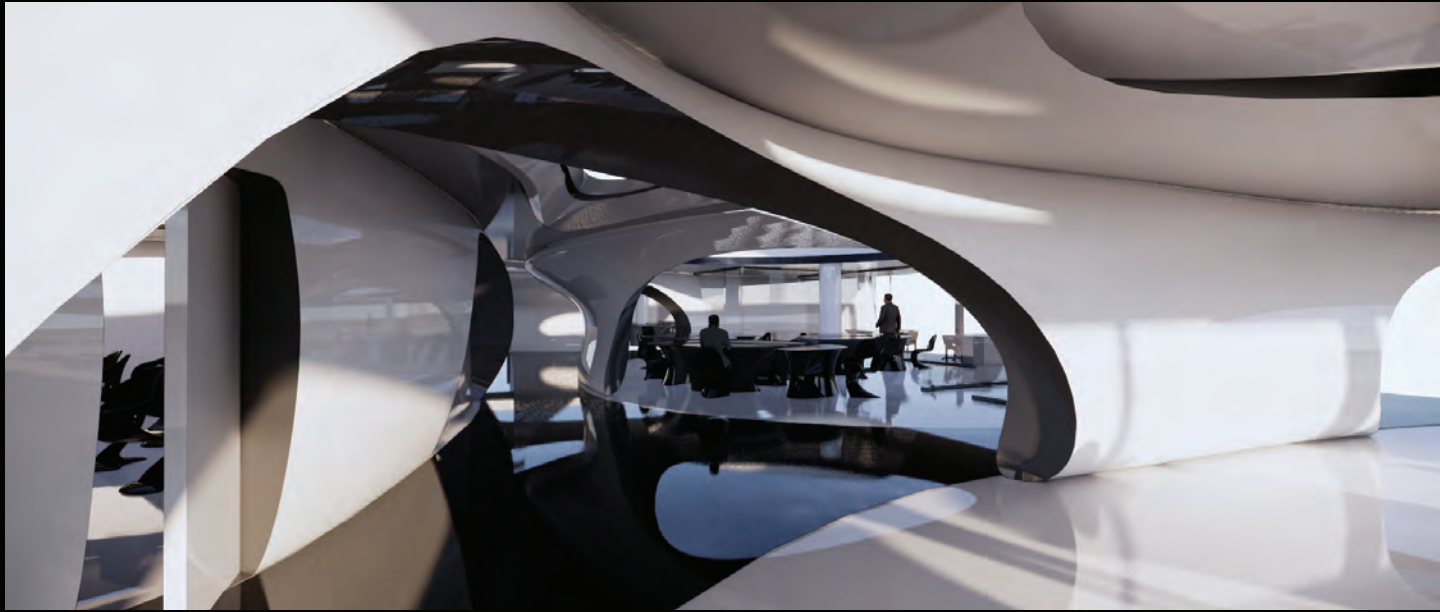


There are open workspaces, private offices and meeting rooms in working areas 1, 2, and 3. The twisted wall gives the space a kind of vitality, just like cell division. Inspired from the moving trajectory of a person to give the dynamics of the wall. A transition of black, white and gray is used on the color to allow the entire wall, ground and ceiling to find a common. The private working area also uses semi transparency glass to give users a sense of borderlessness.

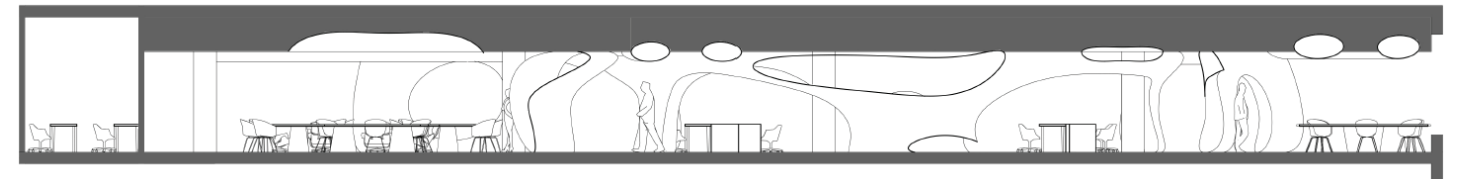


33
The shape of the lighting continues the split design of the curtains. The large area of light provides the workers' demand for brightness. The ground of circulation uses black to create contrast with the work area.





The large arc-shaped entrances and exits are not closed to make this space feel more free. Users can move from one work area to another at any time. The three main working areas can also directly see each other, increasing the sense of visual interaction. The distortion of the wall is from thin to thick so that it will not affect people's demand for width when walking.

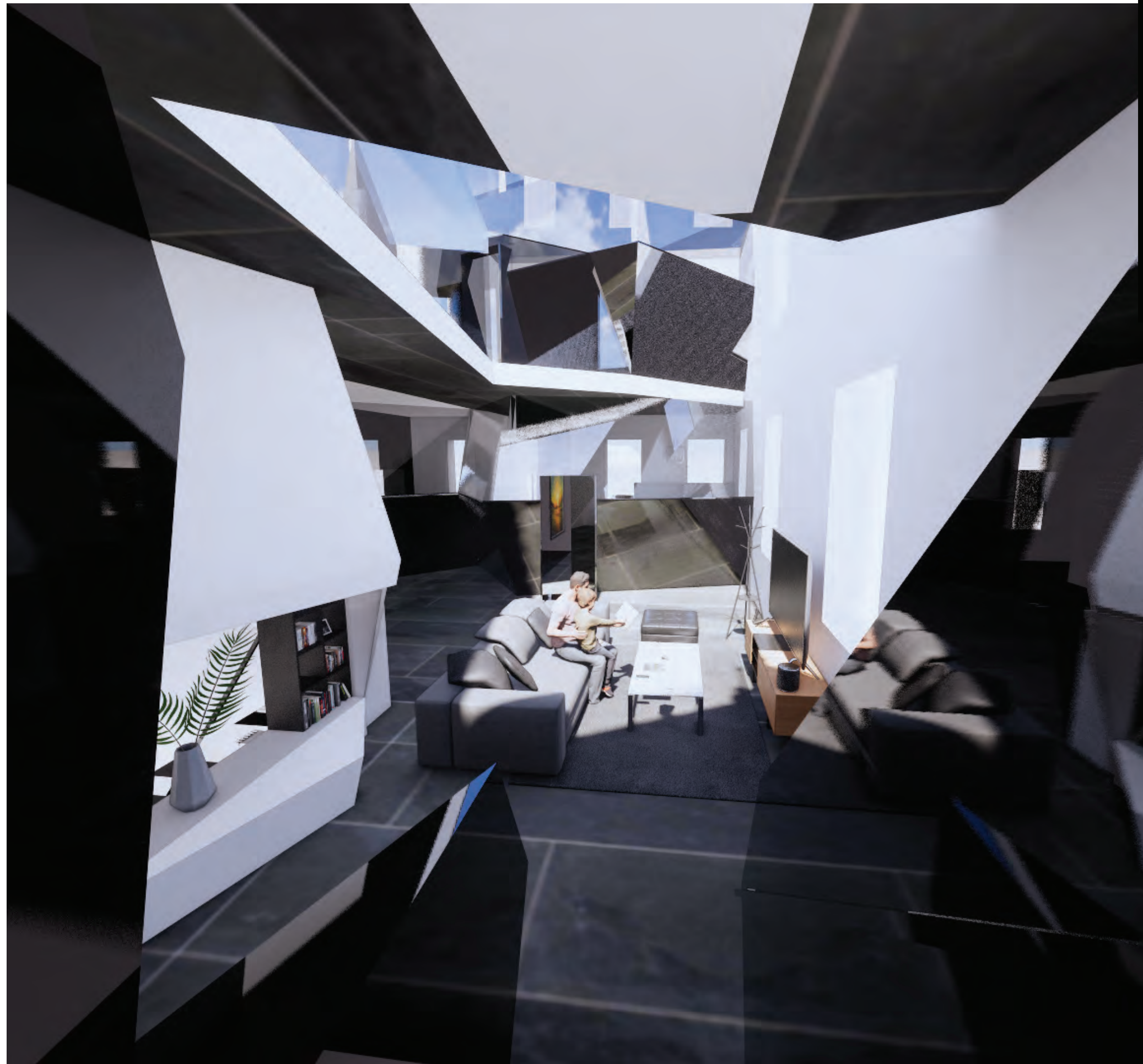




Self built table in the public working area matches the rhythm of the wall and continues the style of the panton chair. In terms of function, each table can be combined with another to achieve the way needed for communication for the users.

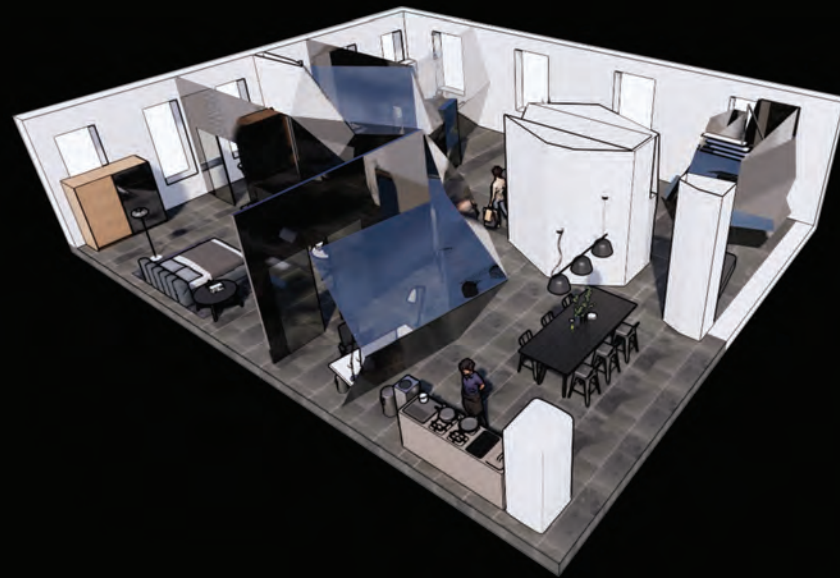
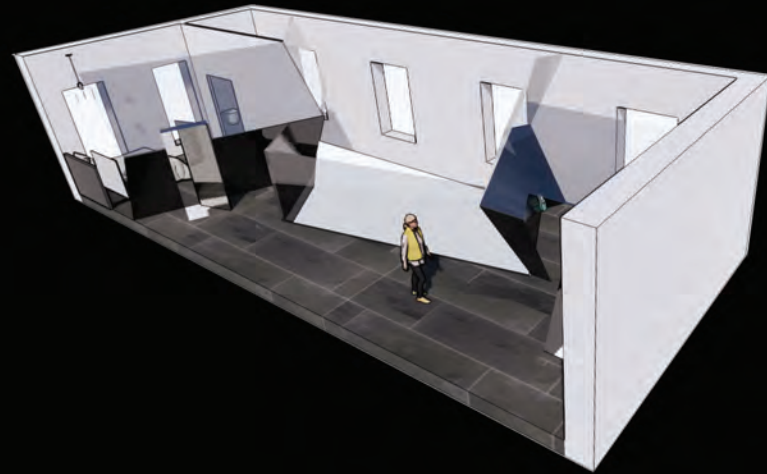


In the lecture room (4), there are 27 seats spread out in the middle, in order to have better viewing during the lecturing. The public resting (7, 8) and eating area (9) are both designed at the end of the circulation, so that the gathering effect can be better. These places are set next to the windows, which can also have a visual rest effect for the users by looking outside.

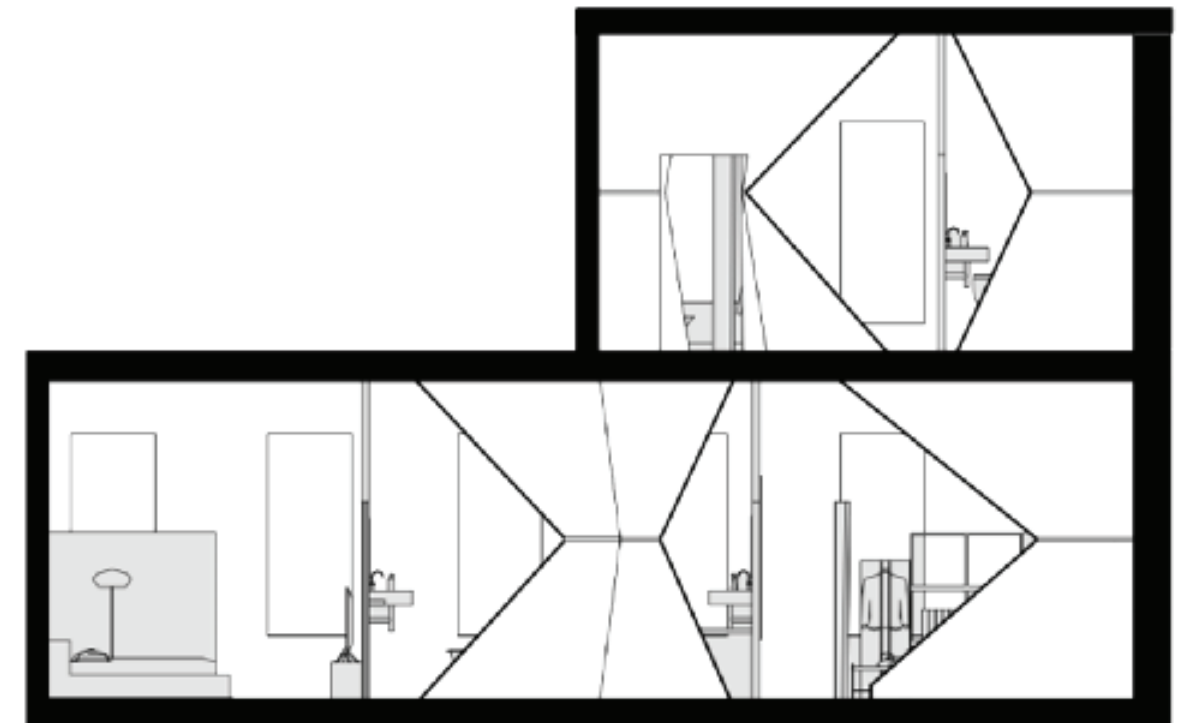


chiesel house

This design is inspired by the concept of fragments of life. I think that a person's life is composed of different pieces of life every day, so this idea has been derived from the shape and application in this house. Each wall is made of glass with variable transparency, and when the user inside opens the transparency, each room has a sense of unlimit-edness. The edges and corners of each different angle can reflect a dynamic in each corner, so that people in the room can feel the small changes in the house and life everywhere.

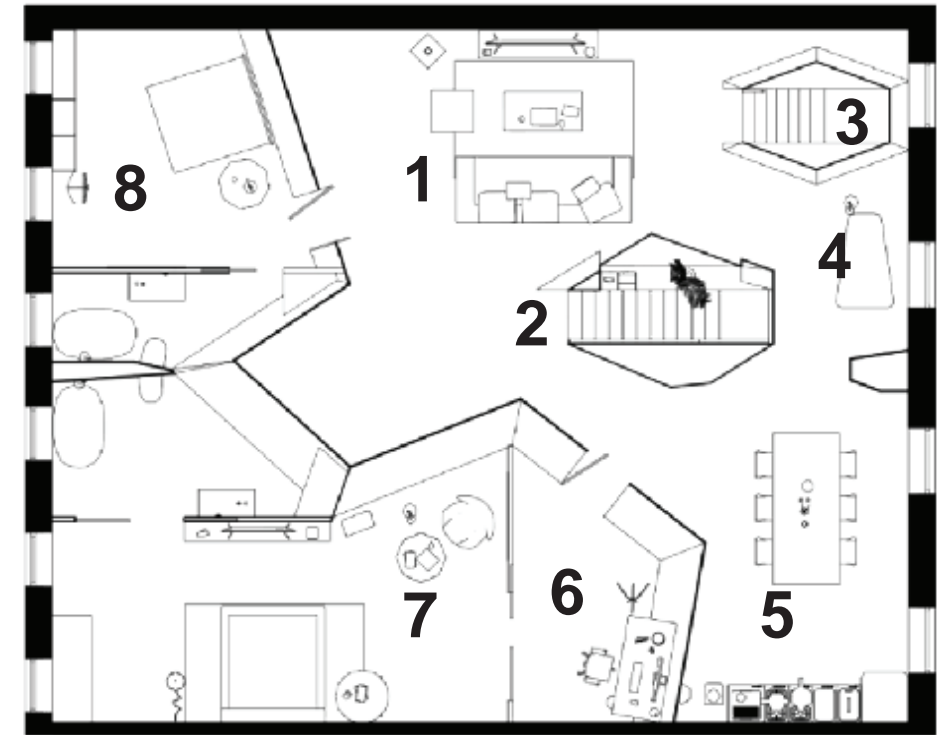


In addition, the corners of the wall are arc-shaped to ensure the safety of users. All the corners are also higher than 6', which also lowers the degree of danger from user's height. The chisel style of fragments encourages users to better feel the bits and





1st floor



- 1. living room area
- 2. come in
- 3. go up
- 4. storage area
- 5. dining area
- 6. private office for office room
- 7. master room
- 8. elder's room

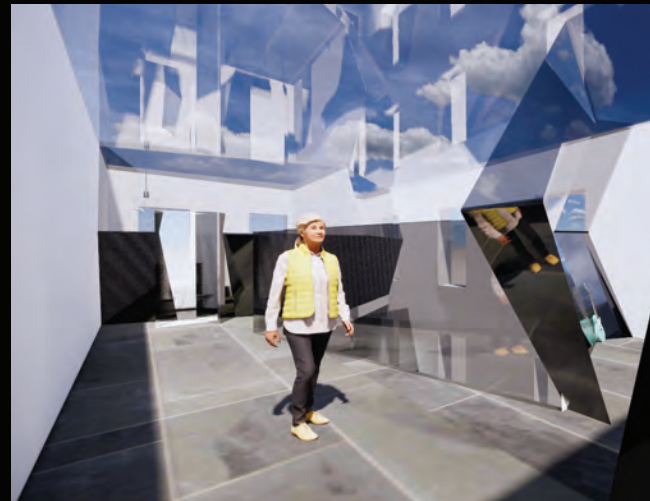


the height of the transformation of each wall is higher than 6', so that it can reflect the dynamics of the upstairs well. You can enjoy the feeling of openness without losing privacy.

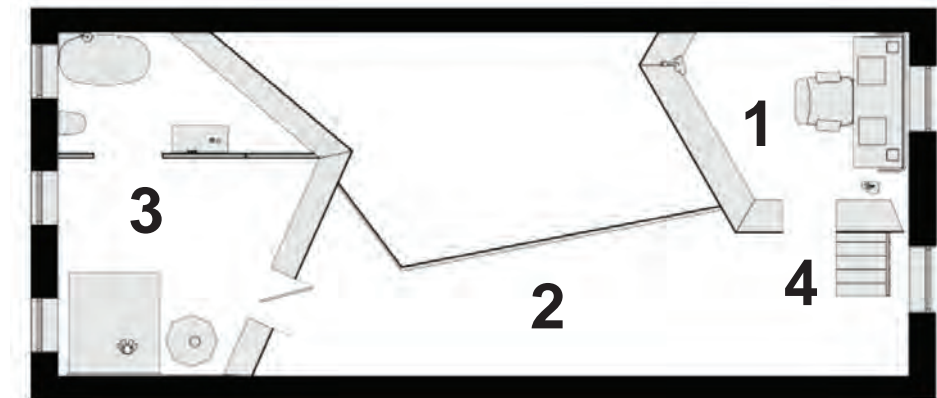


The *chisel* fragment-like structure runs through the room from the inside to the outside. The *1st floor* focuses on the master's room and the elderly's room. The changeable wall material can make the safety of the elderly get the first attention and guarantee. There is also a dedicated office and rest area in the master room.

2nd floor



The **second floor** focuses on children's activities, including children's rooms and music studios. According to the customer's love of children for music, the music studio area is designed to allow children to better create their own hobbies. Walls at different angles can also reflect sound, allowing users not only to experience life visually, but also to experience sound.



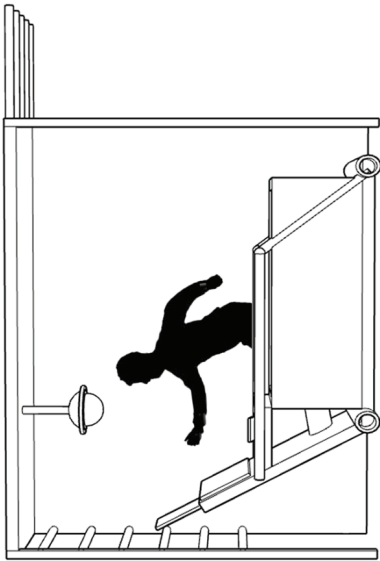
- 1. music room
- 2. bridge
- 3. child room
- 4. come up



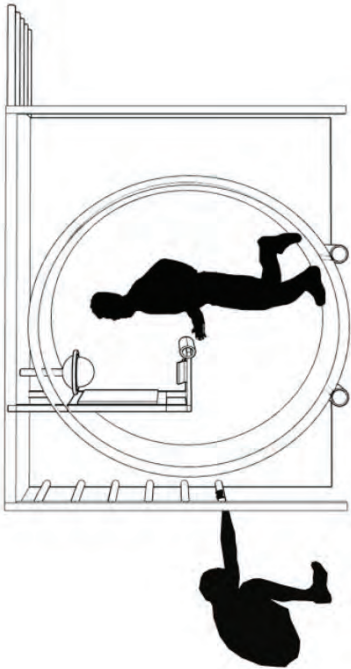
energetic library

In this library, a bold attempt was made to combine dynamic and static relationships. Reading and sports have always been basically two concepts, because the two have a positive and negative relationship. But my starting point before designing was to have doubts, because I think exercise and reading are actually moving, because one is the brain moving and the other is the body moving. So for people, both are very important. This design is to allow people in the library to enjoy the fun of reading and the importance of exercise for health.

3



4



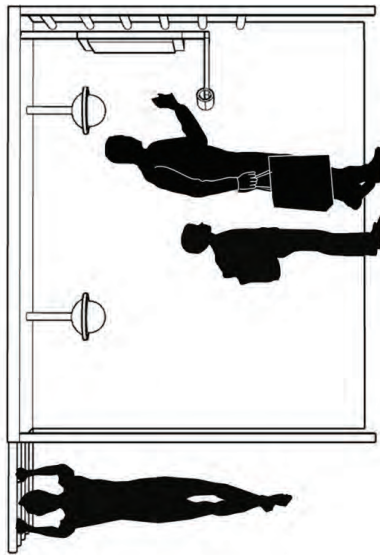
3

“running, reading, stretching module.”
This machine combines the operation of high speed running and reading. Fix the e-book so that the shaking of running will not be interrupted with movement.

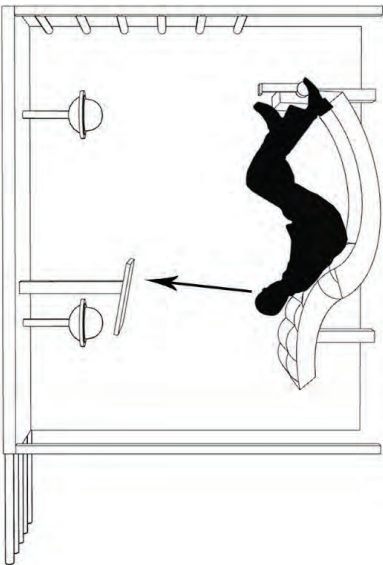
4

“running, reading, stretching module.”
The circular running area allows users to better adjust the speed they want. The e-book can adjust the height. The wheels under the machine for workers to move to different positions, which pro-

2



5



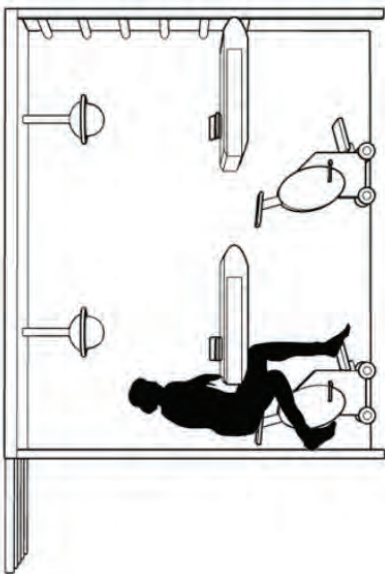
2

“Check in, pull up, stretch module.”
When users enter the library, they can have the opportunity to do the climbing poles on both sides to do a warm-up.

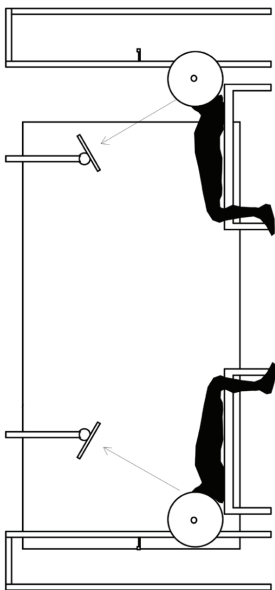
5

“laying, reading, exercise.”
The curved bed combines the function of a bicycle, and there is also an e-book on the top of the head for the user to read while laying down.

1



6

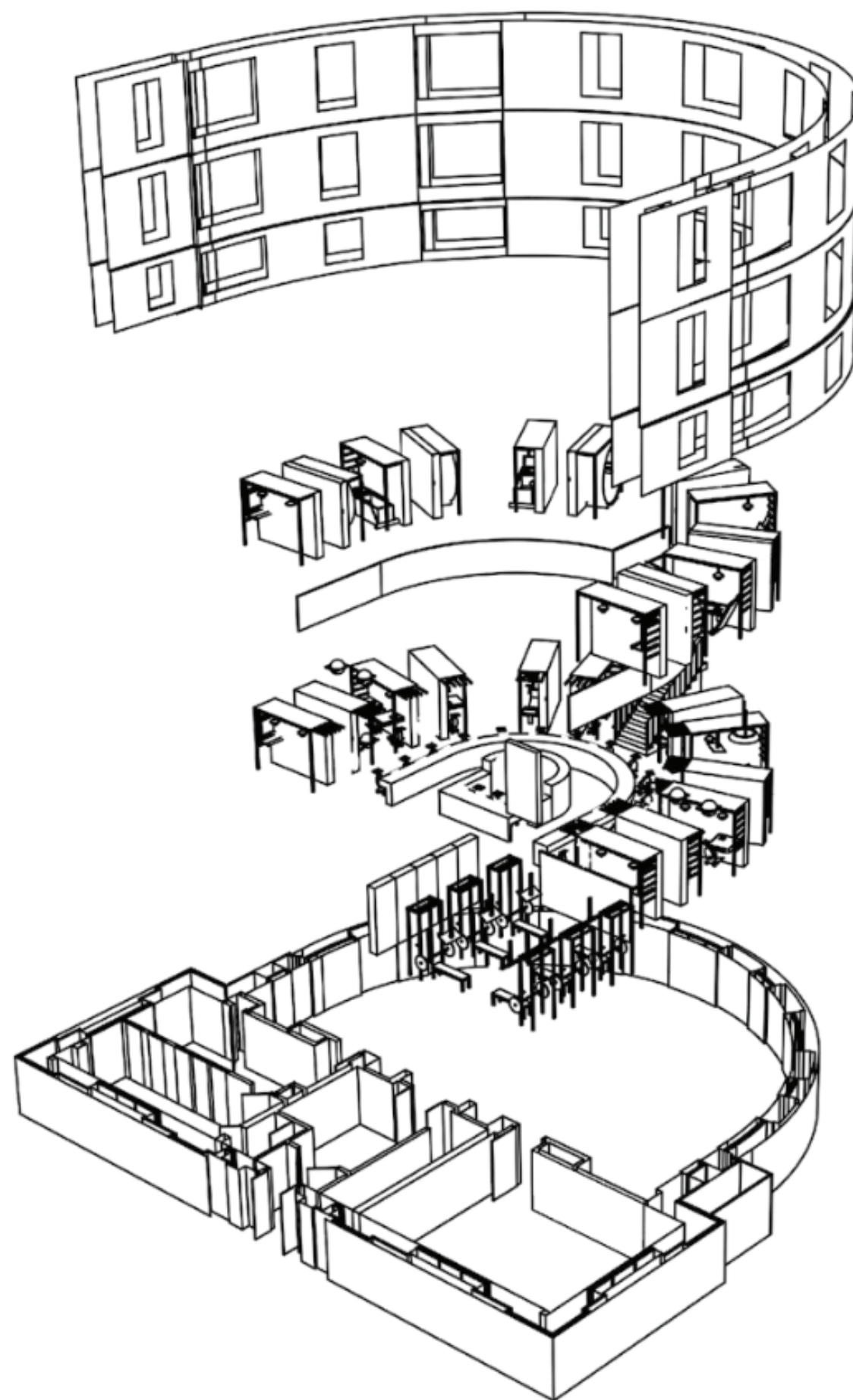
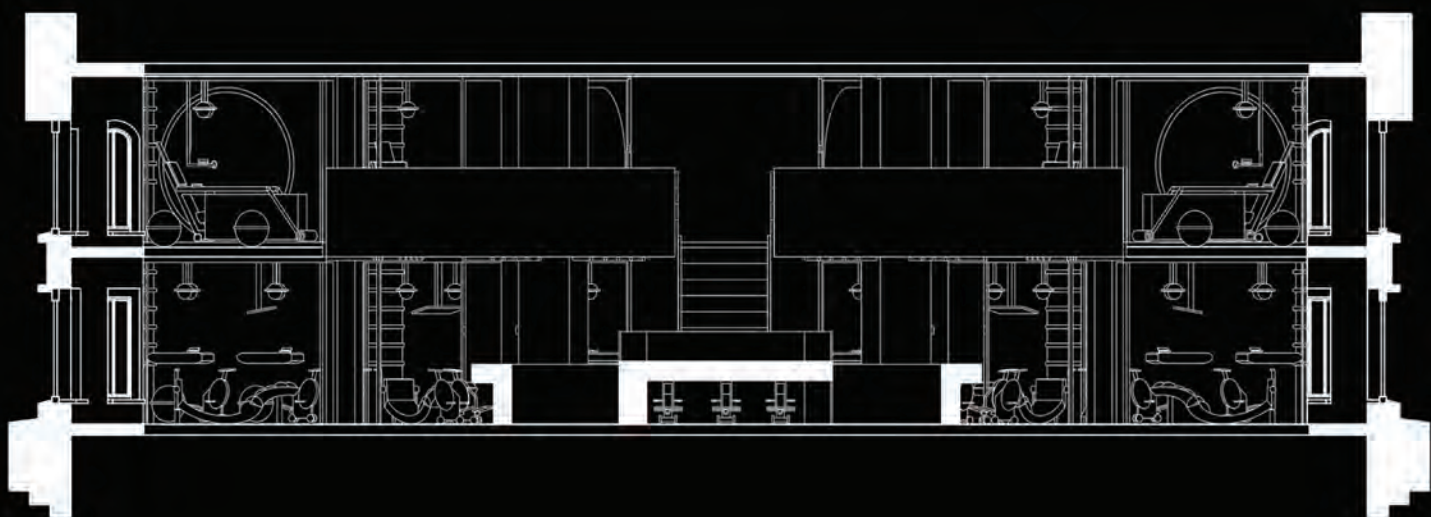
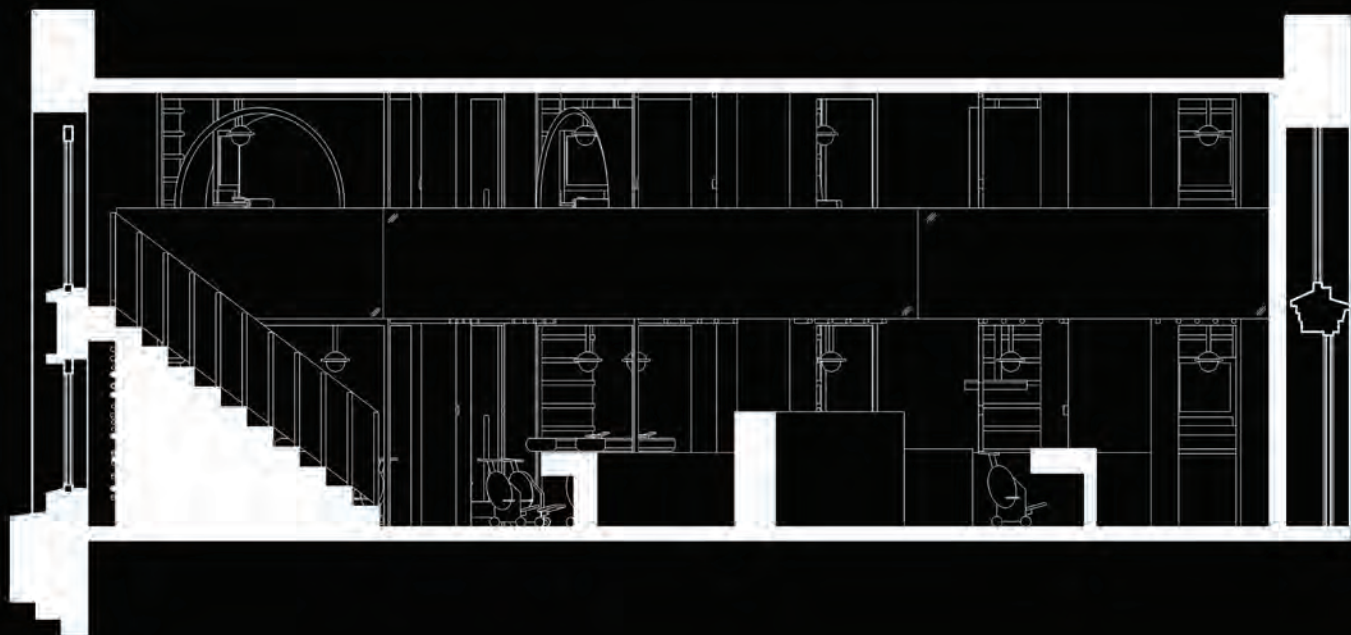


1

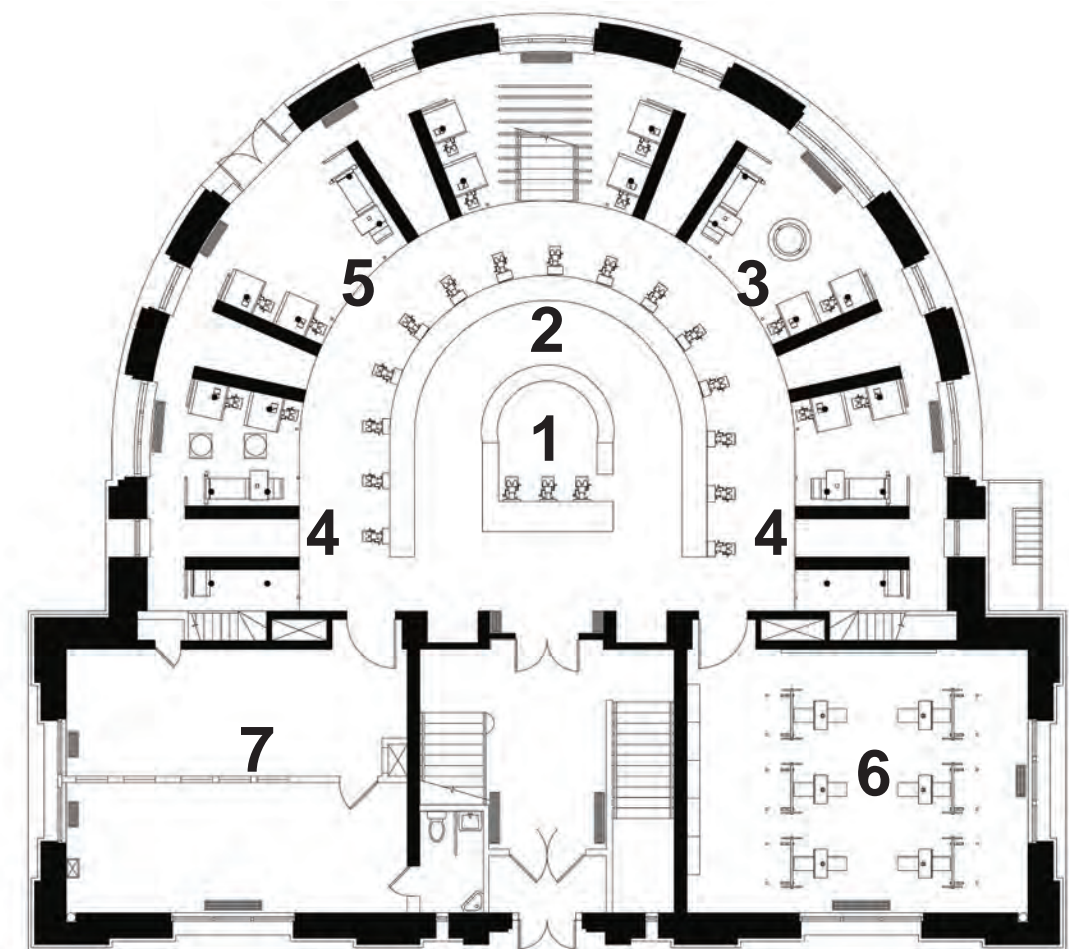
“seating exercise, reading, stretching.”
The fixed bicycle chair is combined with the reading table, allowing users to sit and have the opportunity to exercise.

6

“benching, squatting, reading.”
This is in the strength training reading area while exercising and having the opportunity to read books.



1st floor



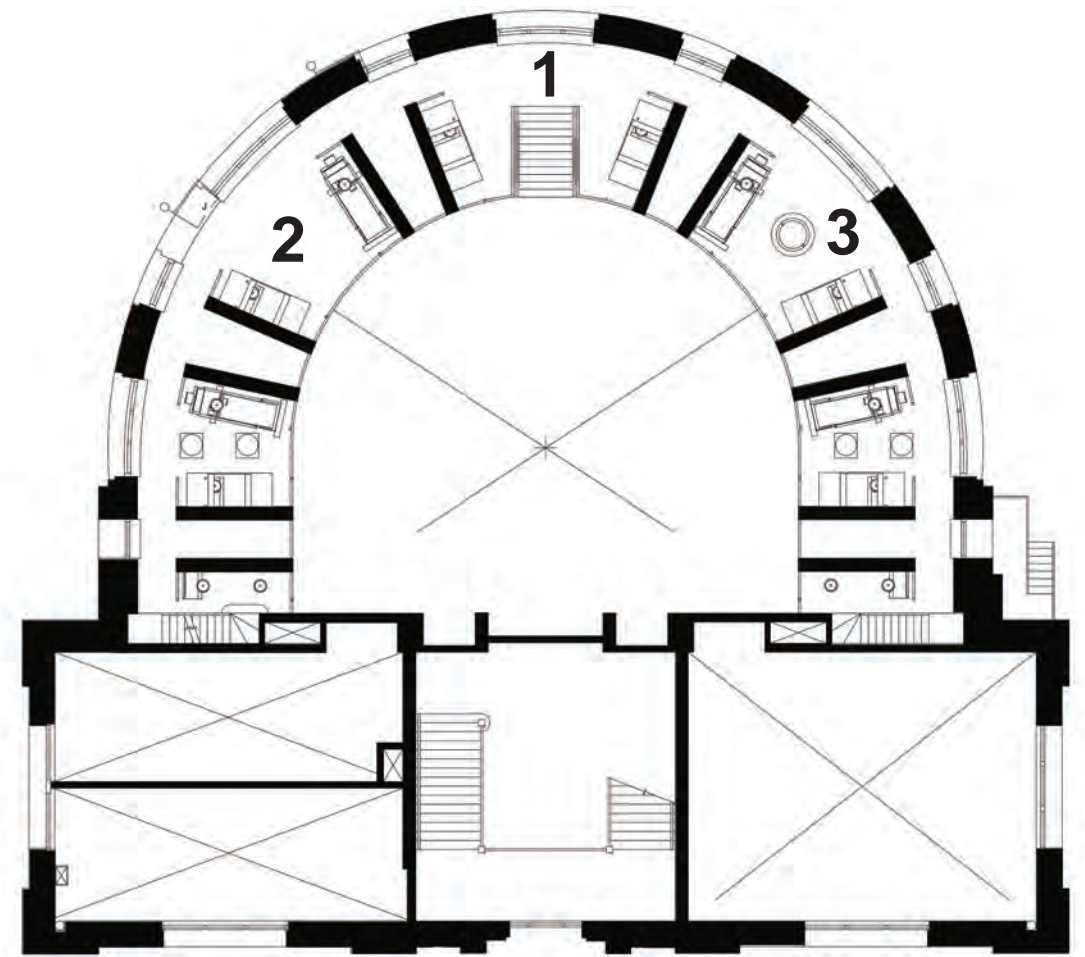
The 1st floor is mainly used by the elderly, so most of the combination of bookshelves and fitness equipment focuses on slow exercise. A private area next to it is dedicated to strength trainers, to achieve a combination of young and old in the 1st floor.

- 1. reception area
- 2. public reading area
- 3. quick changing area
- 4. modules (1,2,5)
- 5. fire exist
- 6. strength training area
module (6)
- 7. office & restroom

2nd floor



The 2nd floor mainly focuses on young people who like to be cardio in particular. The books on both sides are also biased towards young people's books. The quick changing area is convenient for exercisers who have just finished using modules.

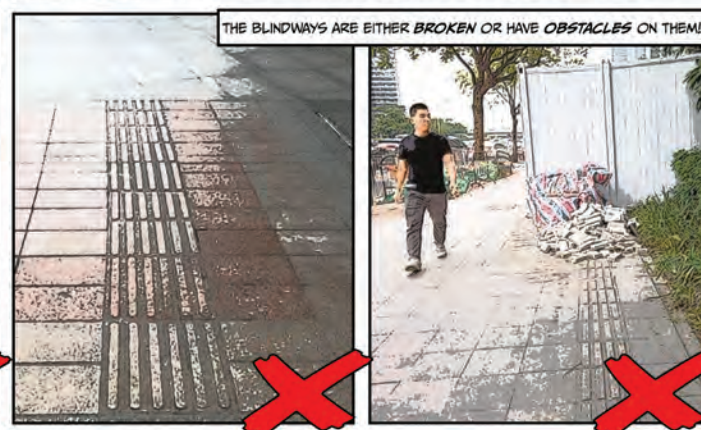
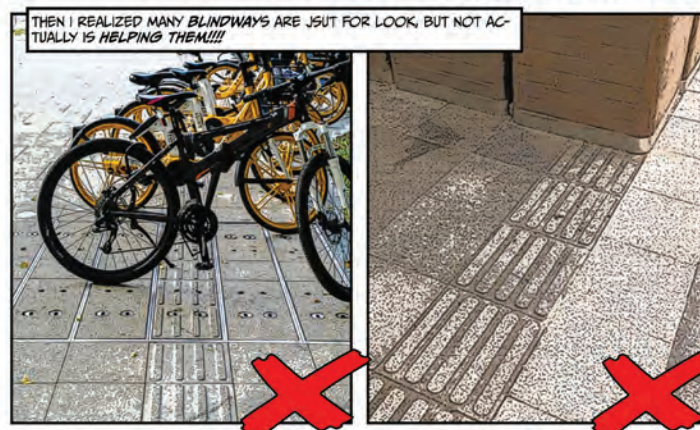
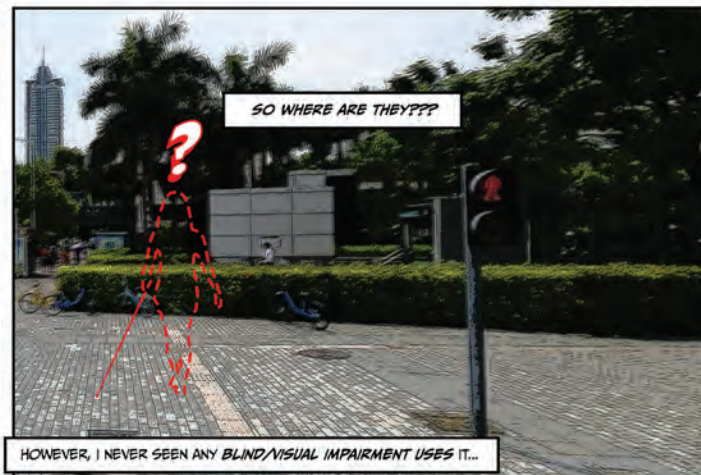
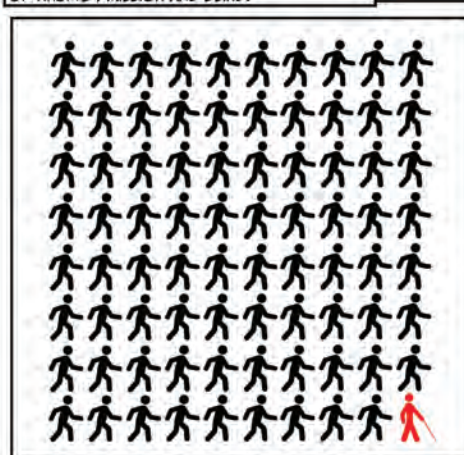
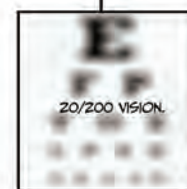
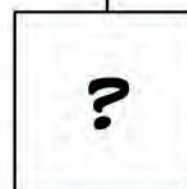
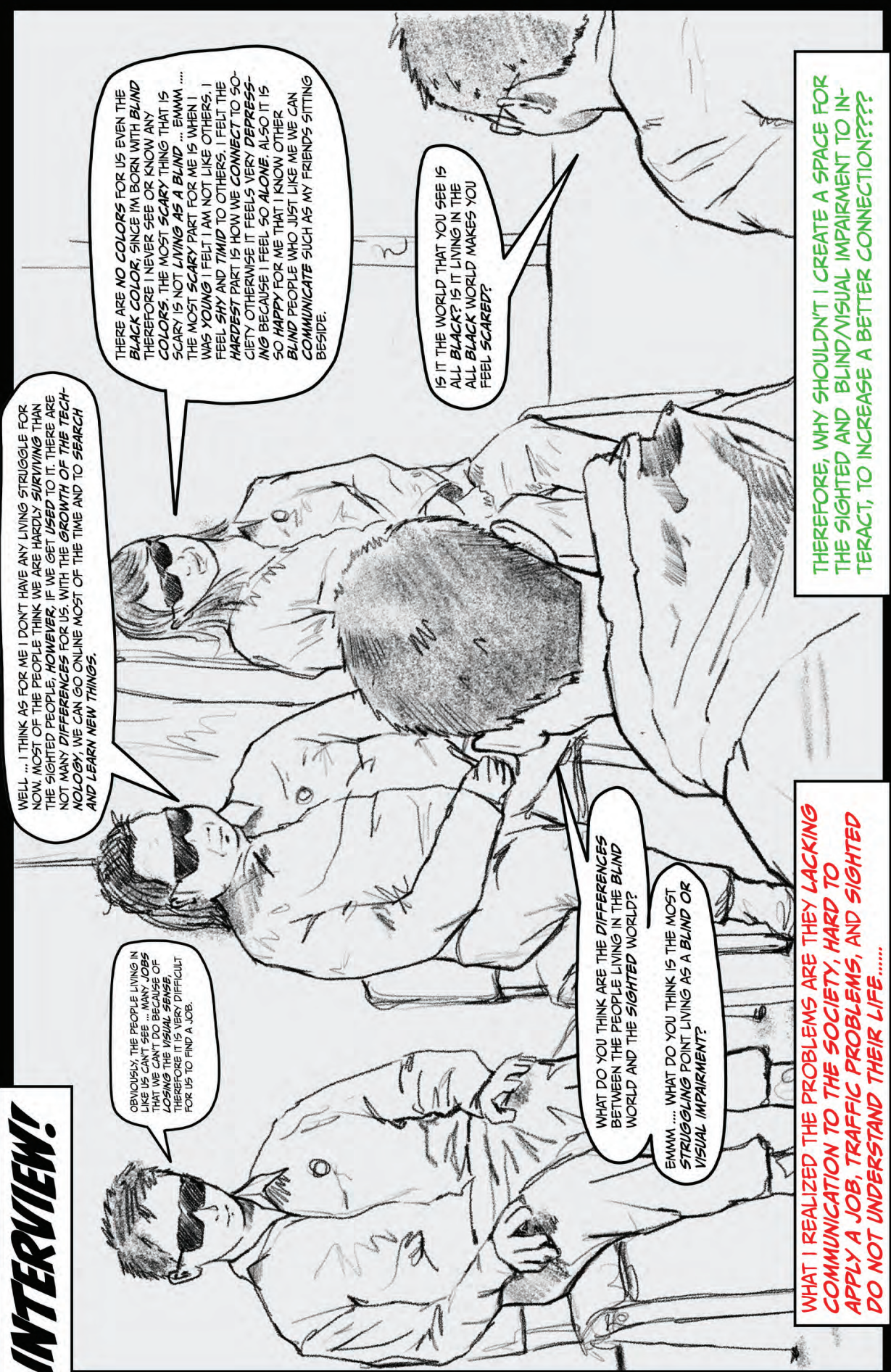


- 1. stair to go up
- 2. cardio modules (3,4)
- 3. quick changing area



pattern darkness

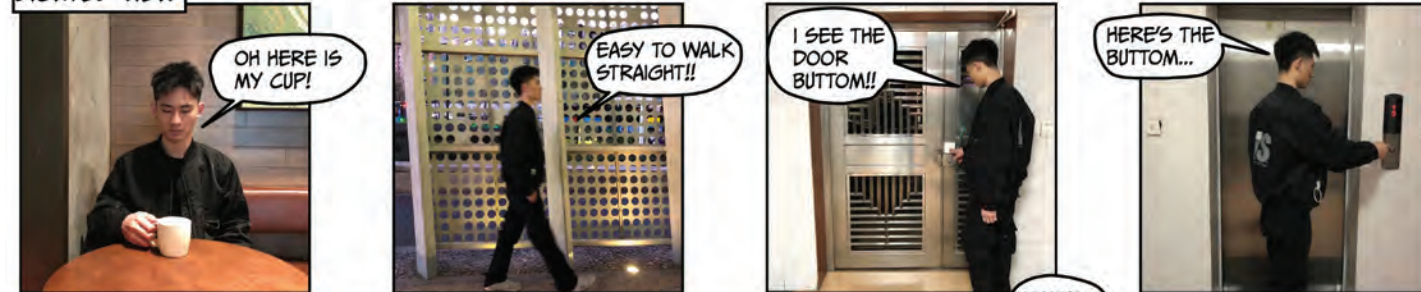
There is an invisible boundary between visual impairment and sight. This thesis creates a place to give sighted people an experience of how visual impairment is lived, while developing navigable environments using other senses for the blind. Through this interior, interpersonal connections between the visually impaired and sighted create an inclusive society.

PROBLEM!**RESEARCH!****VISUAL IMPAIRMENT & BLIND****INTERVIEW!**

OBJECT!



SIGHTED VIEW



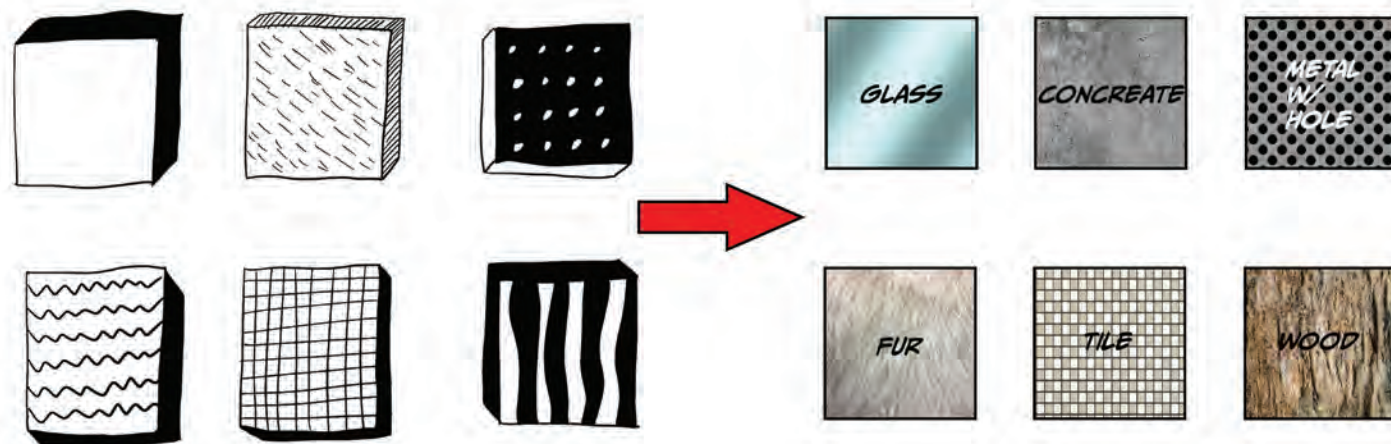
OBJECT IN USE VIEW



PATTERNS FROM OBJECT!

PATTERNS FROM TOUCHING THAT STANDS OUT TO ME WHILE USING THE OBJECT!

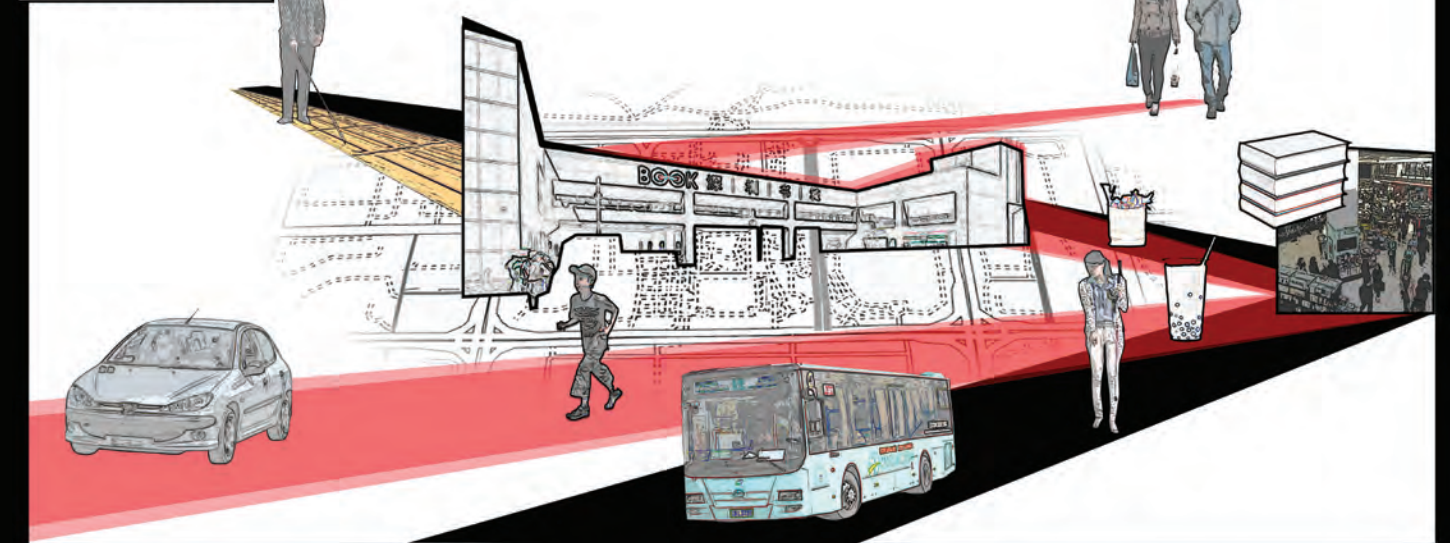
TRANSFER INTO MATERIALS!!



SITE-PHOTO!

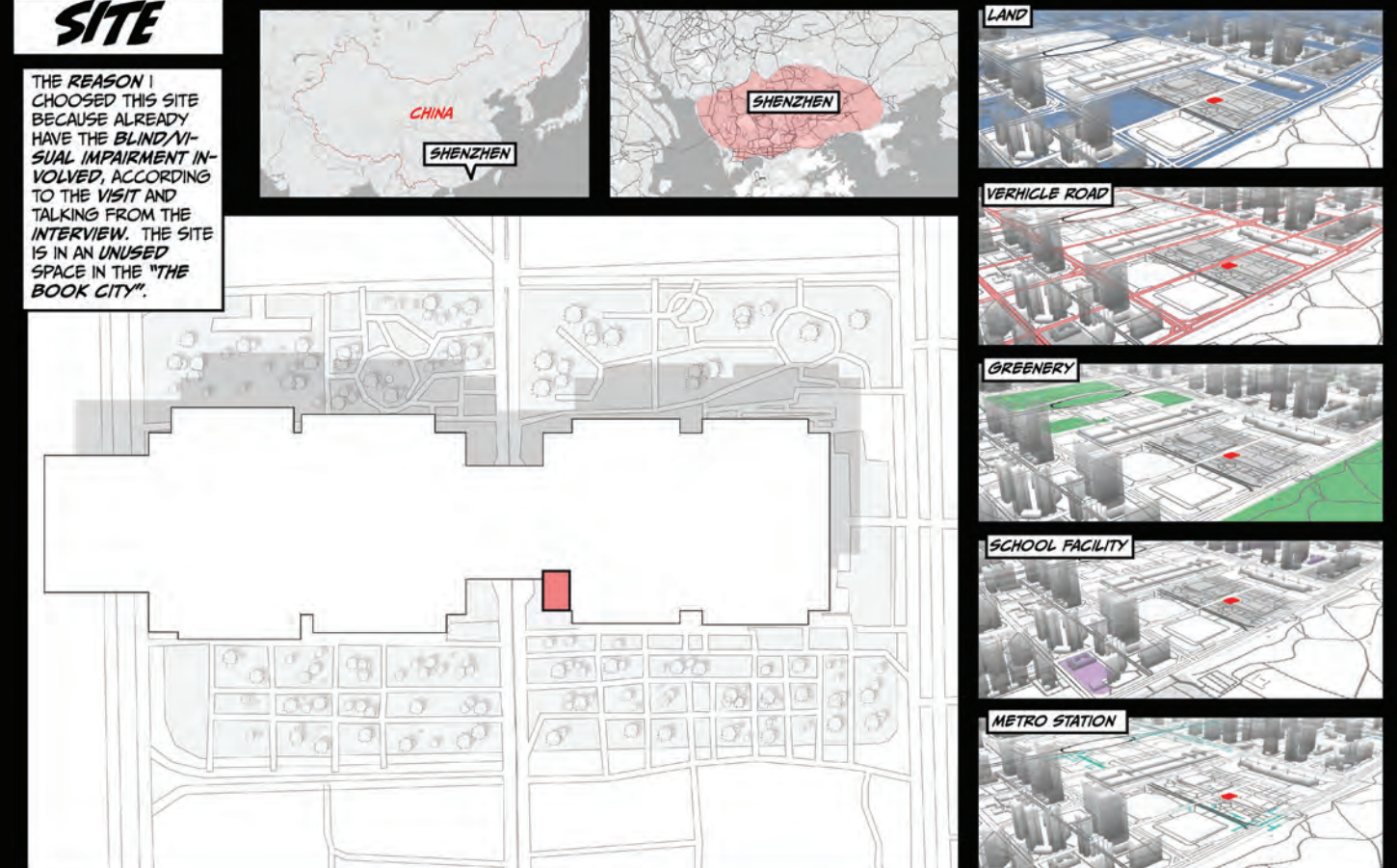


NETWORK

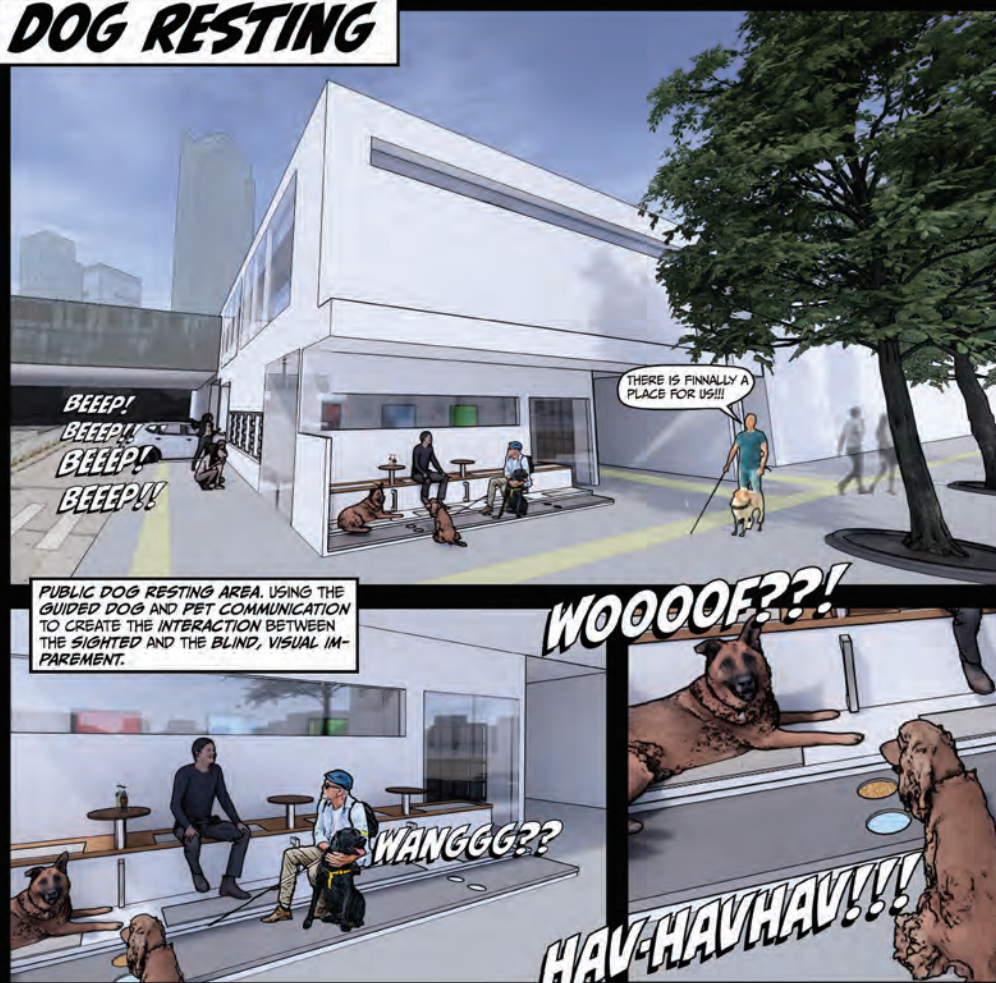


SITE

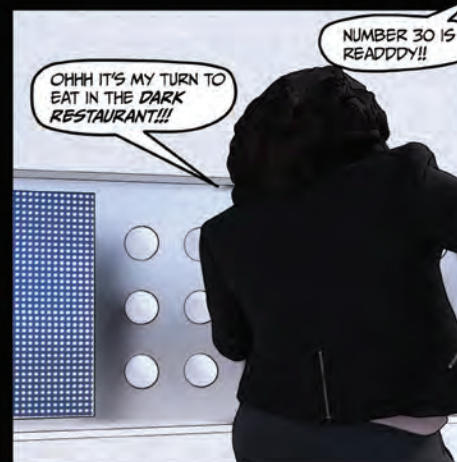
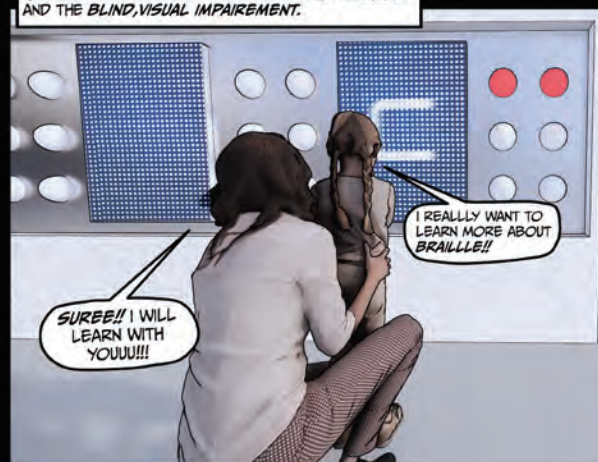
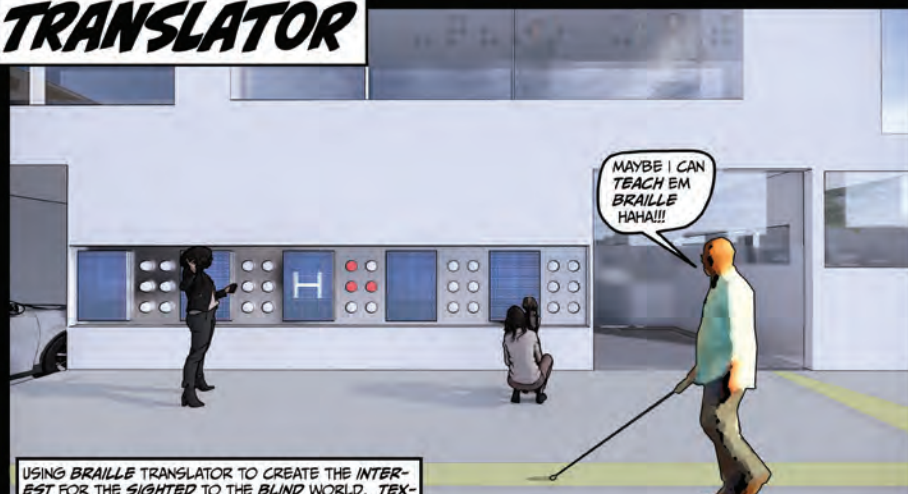
THE REASON I CHOOSED THIS SITE BECAUSE ALREADY HAVE THE BLIND/VISUAL IMPAIRMENT INVOLVED, ACCORDING TO THE VISIT AND TALKING FROM THE INTERVIEW. THE SITE IS IN AN UNUSED SPACE IN THE "THE BOOK CITY".



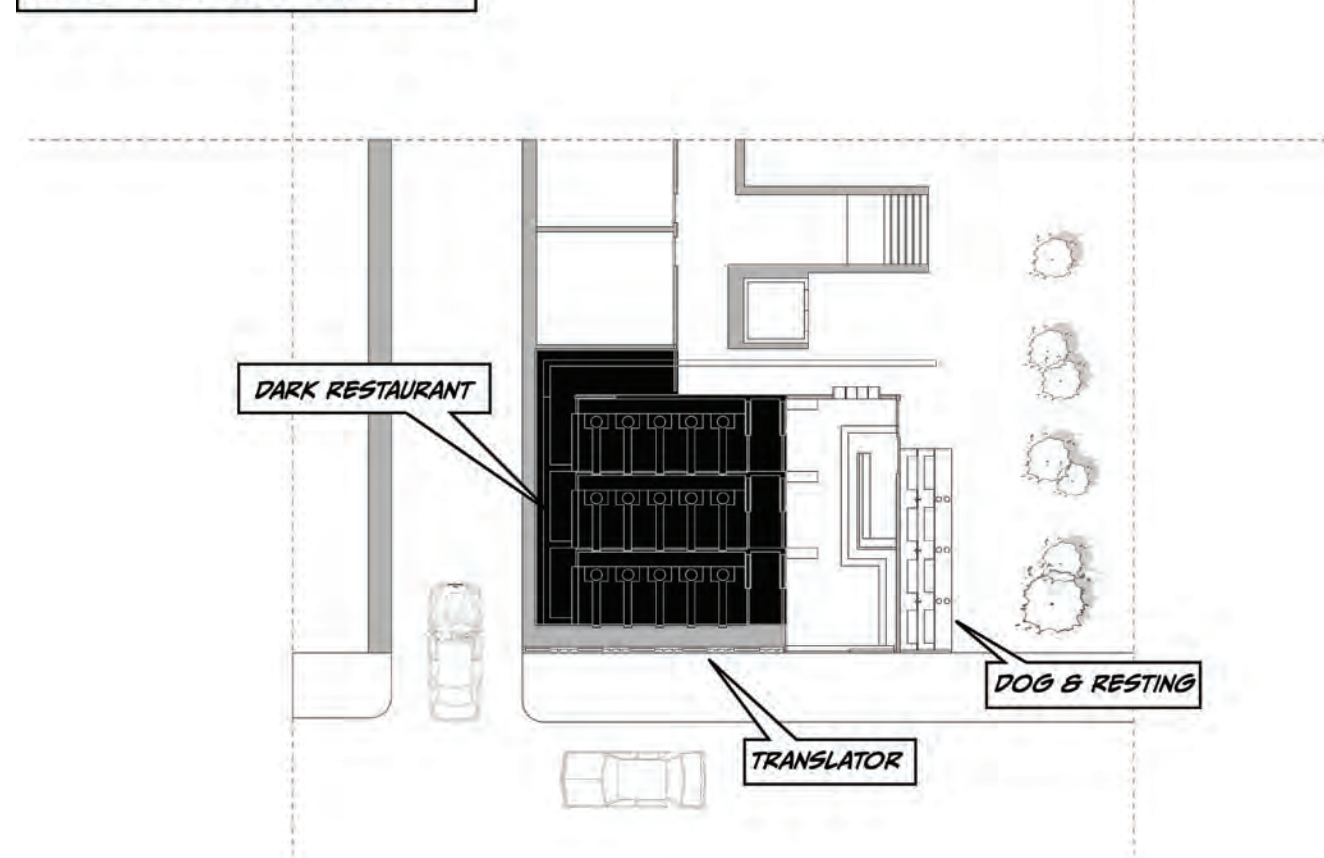
DOG RESTING



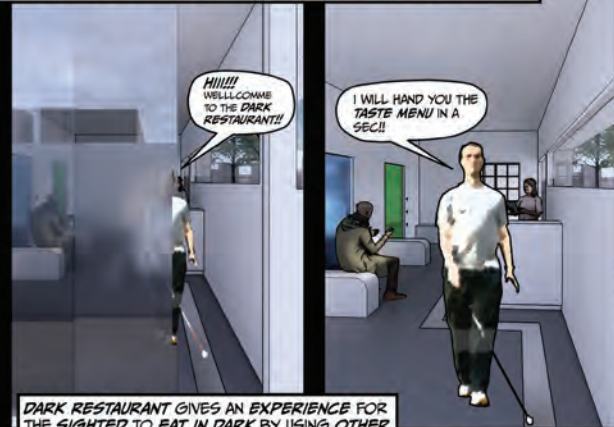
TRANSLATOR



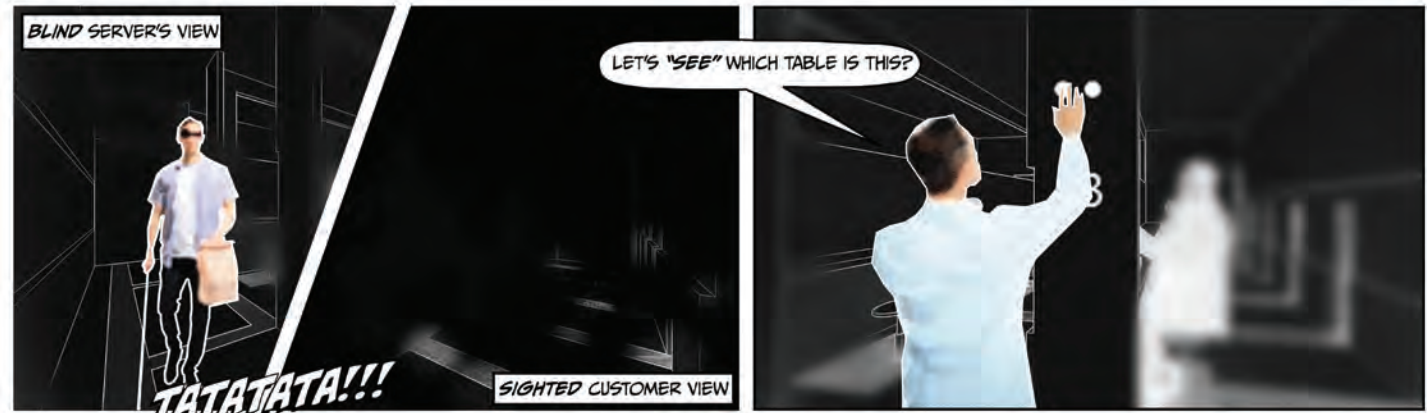
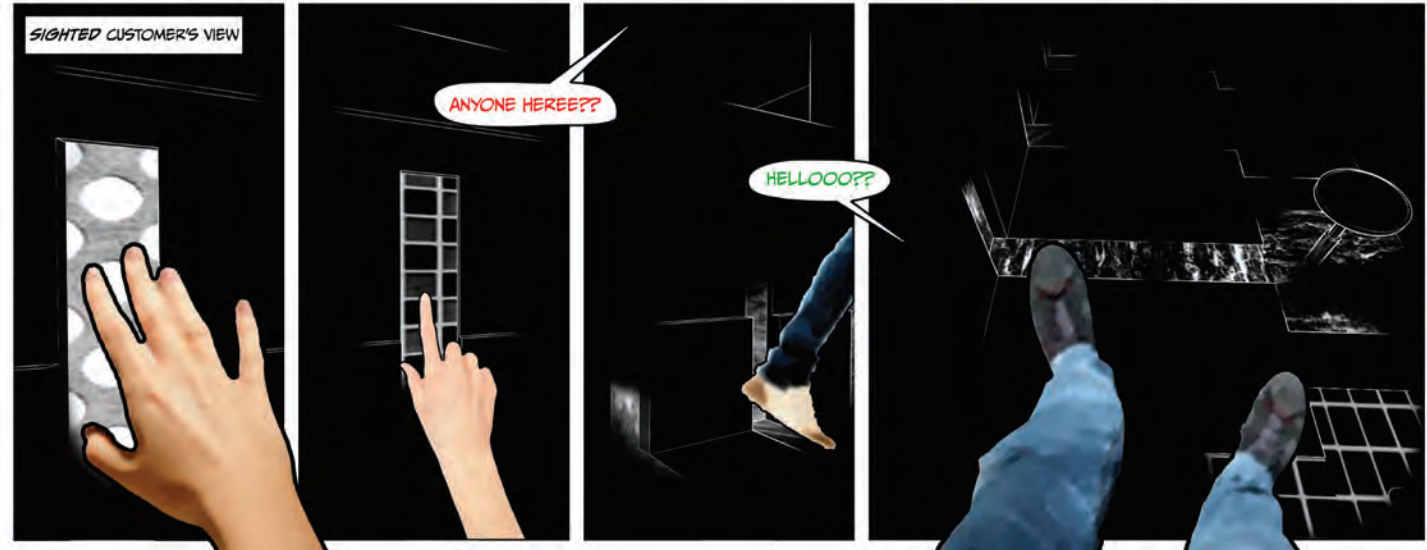
1ST FLOOR PLAN



DARK RESTAURANT



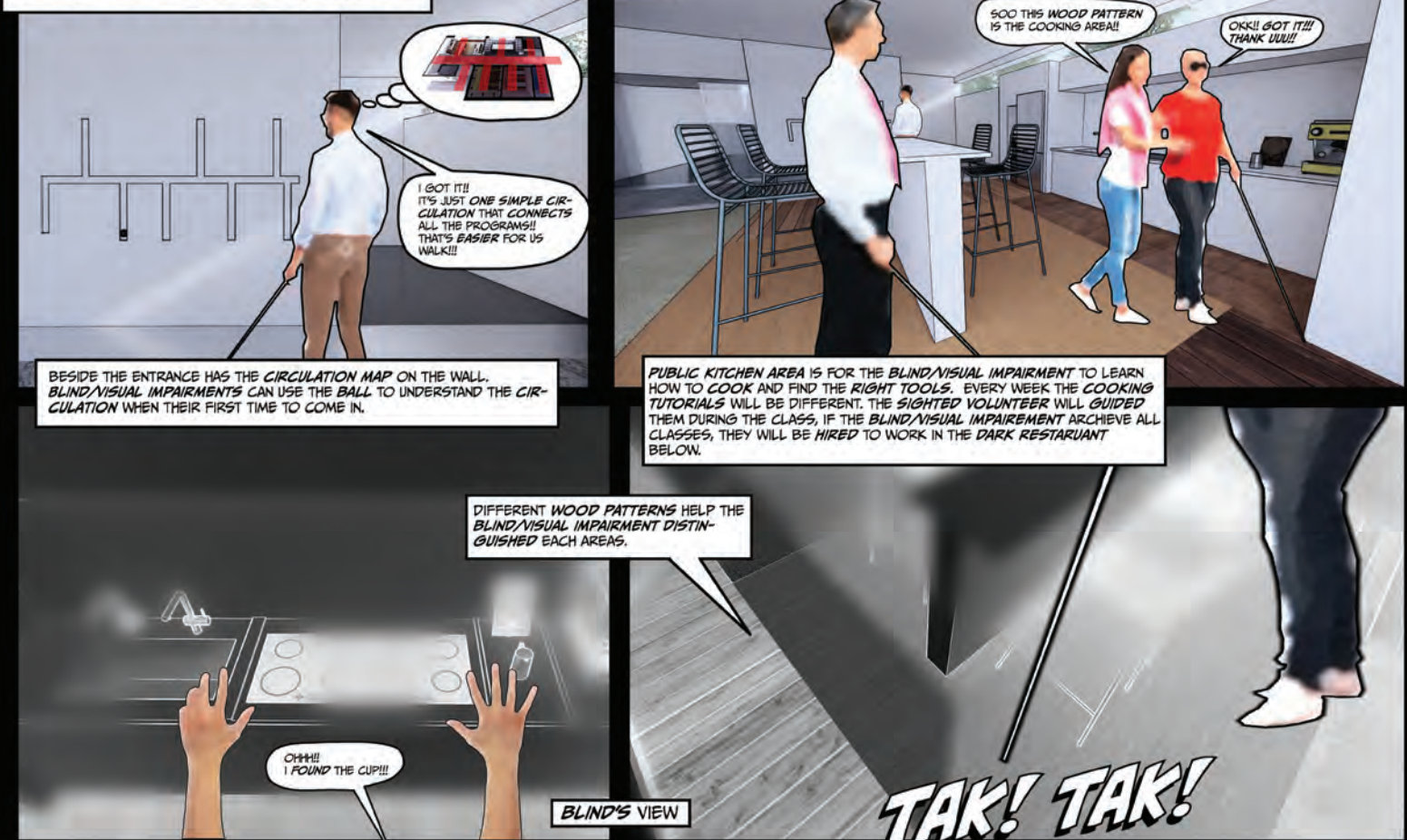
DARK RESTAURANT GIVES AN EXPERIENCE FOR THE SIGHTED TO EAT IN DARK BY USING OTHER SENSES BESIDE SIGHT, TO UNDERSTAND HOW BLIND FEELS LIKE. THE SIGHTED CUSTOMERS WILL CHOOSE THEIR FAVOURITE TASTE AND FIND BY TOUCHING THE RIGHT PATTERN TO THEIR TABLES. THE BLIND WILL WORK AS SERVER AND FOLLOW THEIR OWN NAVIGATION PATH.



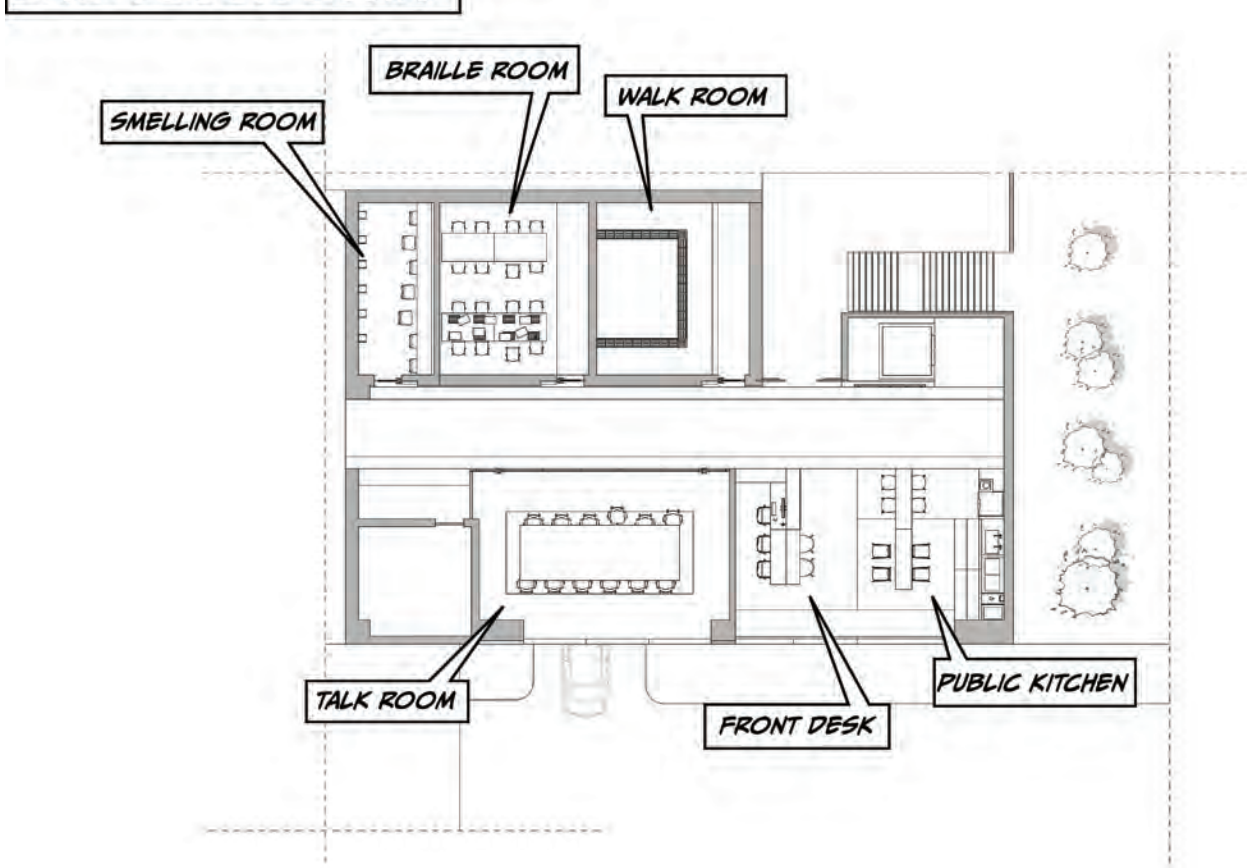
BLIND/VI CENTER



PUBLIC KITCHEN



2ND FLOOR PLAN



paintings- drawings

Before I switched to interior design major, I was studying painting and drawing majors. These are some of my paintings, which include illustration, painting, and drawing. I have learned painting since I was a child. When I was doing interior design, I would think about some spatial relationships from the perspective of painting.

Time- cycle

This is an early pencil drawing of mine. The effect of ink and wash is added from the still life drawing to express the concept of time. The single wheel behind it seems like a clock is constantly following the pace of time. The above machinery fell out of the bicycle over time.



A Corner in the City

When I was walking in New York for a day, I found a mouse jumping out from a corner and passing through the crowd quickly. I find it very interesting to see the feeling of this city from the perspective of a mouse. Maybe sometimes a city has a different understanding when viewed from different heights. This illustration done by ink pen & pencil.



Childhood nightmare

I believe that many people have had unforgettable nightmares. This painting is one of my childhood nightmares. Before I went to bed, I had just watched an episode of “The Smurfs” animation, but the originally happy animation turned into a scene where a group of vicious Smurfs came out to chase me. The painting was done by oil paint.



Untitled



In the past few years, I have studied fine art to interior design from the Pratt Institute. I have always insisted on bold ideas and tried different possibilities in my work. For me, sharing narratives is very important when doing interior design.

Whether from school or during my internship company, I feel the importance of teamwork. A team with good communication can make a project bigger and go further.

I hope that my work can let others see the creative possibilities both now and in the future. From the design, the society is more immersed in a creative space. Use the power of design to change some thorny issues in society.