

INTERIOR DESIGN

**THOUGHTS**

2017-2021

**FANHAO SUN**

# CONTESTS

NEW YORK

PRATT INSTITUTE

2017-2021

FANHAO SUN



TWISTED HEART  
5



MODULAR OFFICE  
16



HOUSE OF SERENITY  
26

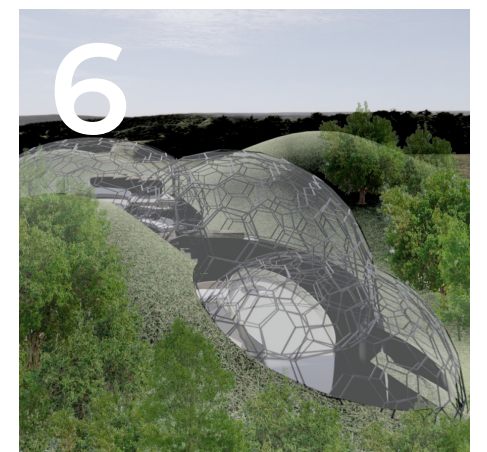
RECIPROCAL BASIN  
36



3FT ABOVE/UNDER  
46



BEETLES BUNKER  
58

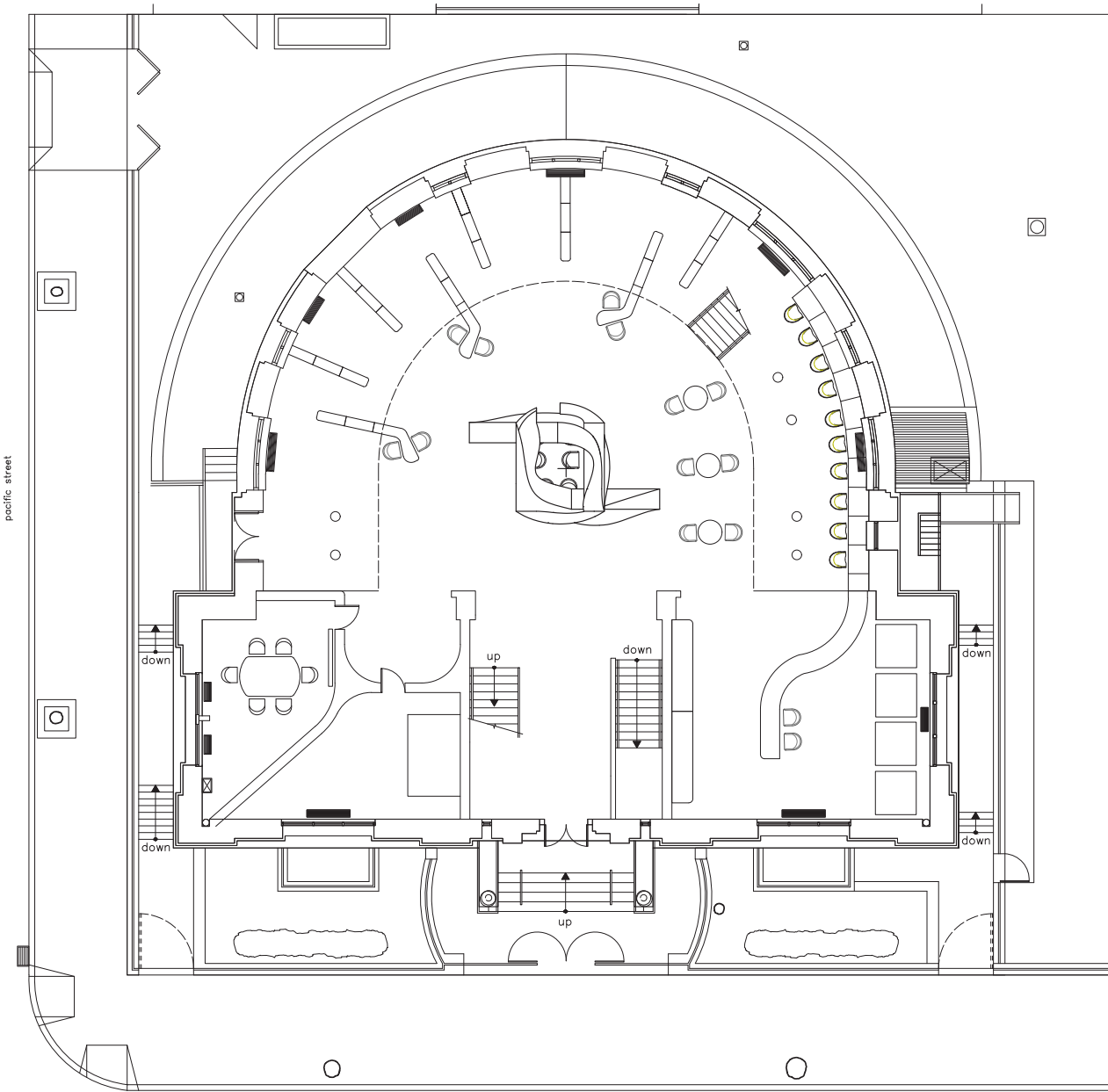




1.

# TWISTED HEART

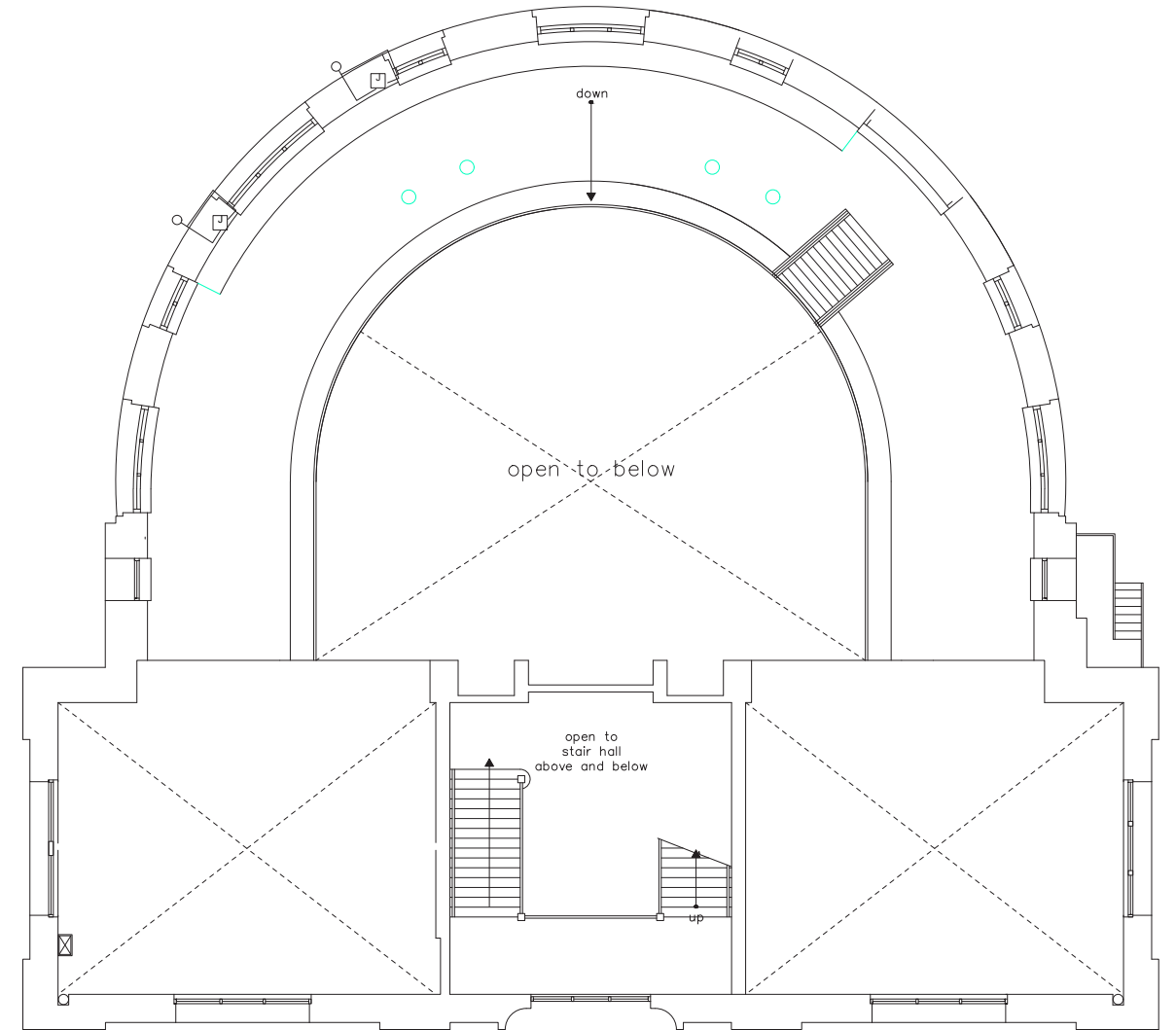
This is a library about technology. People can not only read, but use the space to produce music, animations, robotic constructions as well. Visitors can also borrow various devices they need such as laptops, tablets, cameras, recorders or any kind of chargers.



PLAN

FLOOR 1

## PLANS



PLAN

MEZZANINE



# THE “HEART”



RENDERING

The central reception space is designed for the staff. It not only serves as a reception desk, but also a small office space for a maximum of 4 people.

LOBBY

# SPECIAL SHELVES



RENDERING

There are tables next to book shelves working as small reading space. They are extended from the top of the book shelves. Outlets are also provided under each table.

LOBBY



# COMPUTER LAB



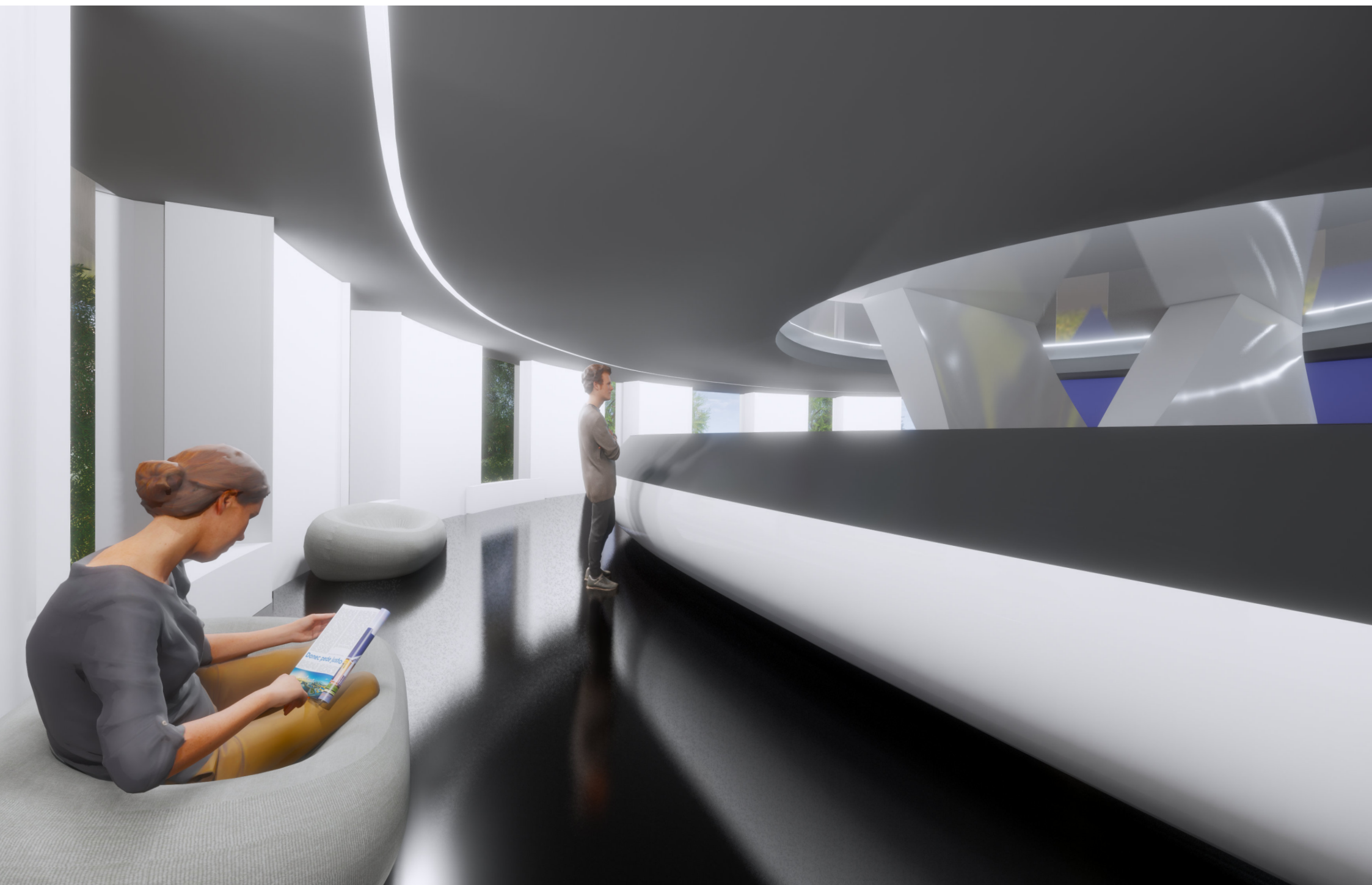
RENDERING

COMPUTER LAB

Visitors are also welcome to use our computer lab. We provide dozens of high configuration computers for research or other demands.



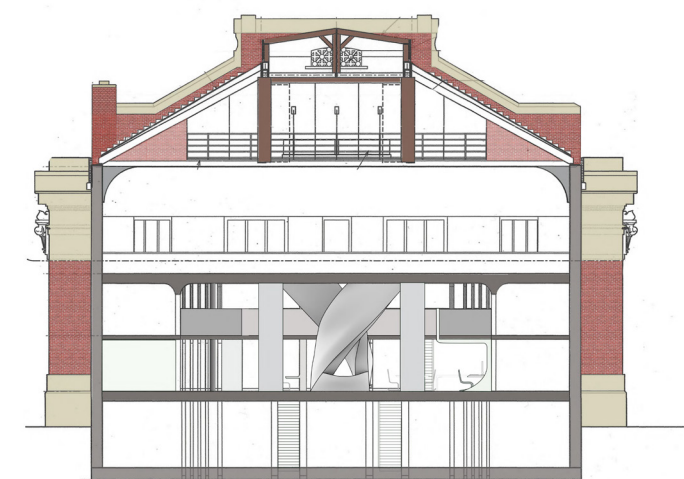
In the mezzanine, I left most of the space open and put some beanbags that can be arranged freely by the user. There is also a long LED screen to display the development of technology.



RENDERING

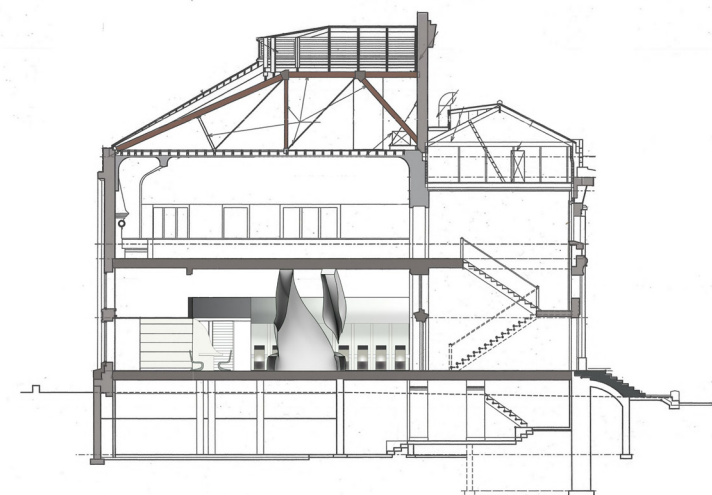
MEZZANINE

# MEZZANINE



SECTION 1

BUILDING

③ LONGITUDINAL SECTION  
1/2" = 1'

SECTION 2

BUILDING

④ CROSS SECTION  
1/2" = 1'



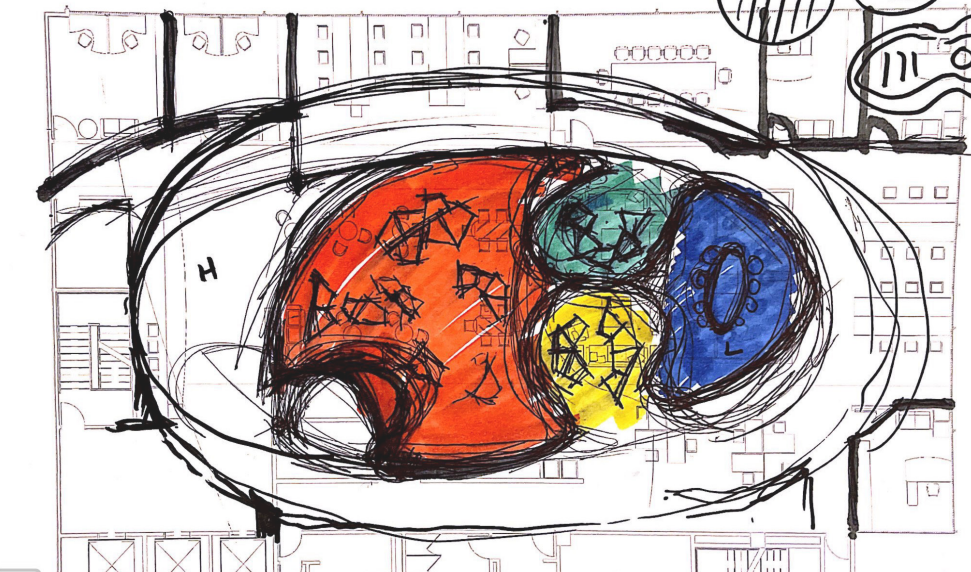
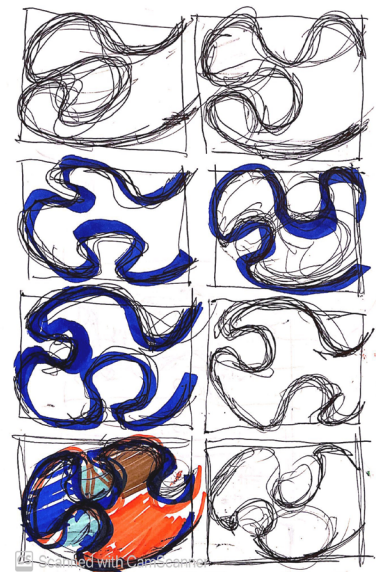
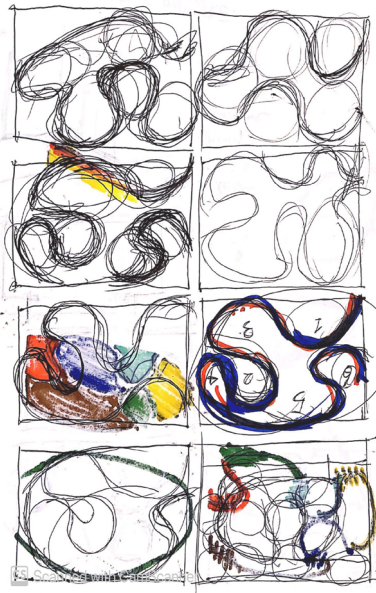
2.

# MODULAR OFFICE

I designed "Modular Office" for UN. In the center of the office, there is a multi-function space with modular furniture and curtain system I designed to adapt to different purpose of space



# CURTAIN SYETEM SKETCH



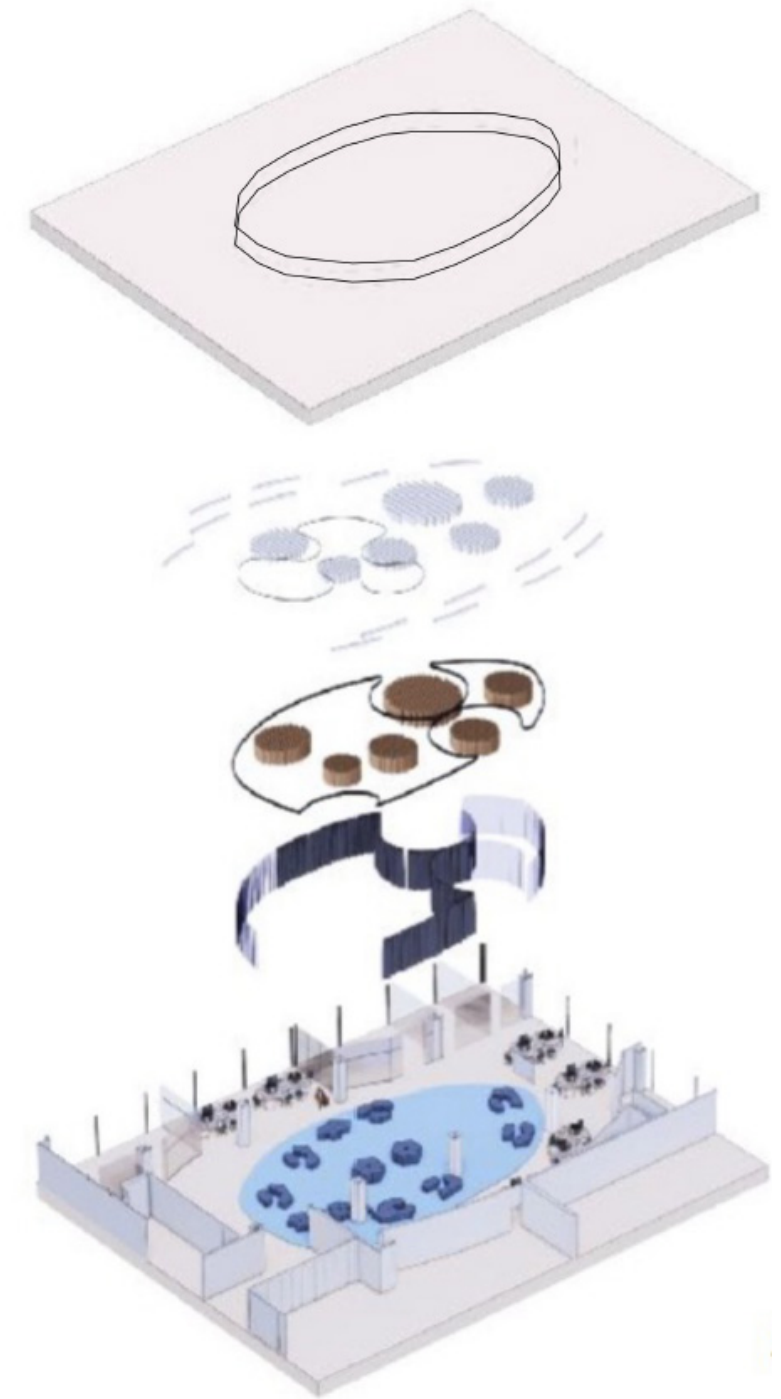
CEILING

LIGHTING  
FIXTURES

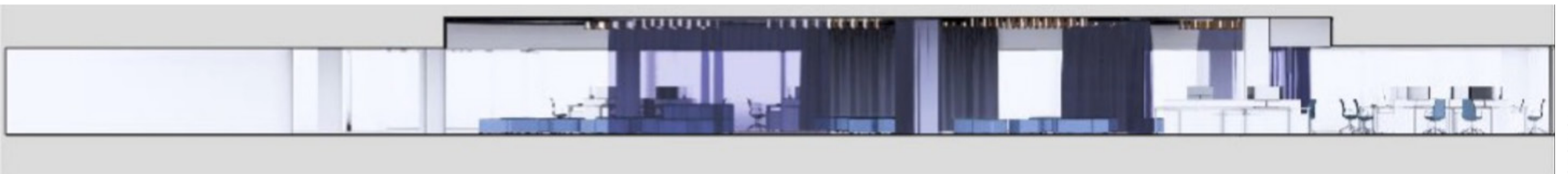
ACOUSTIC  
BAFFLES/  
CURTAIN  
TRACKS

CURTAINS

FURNITURE/  
WALLS

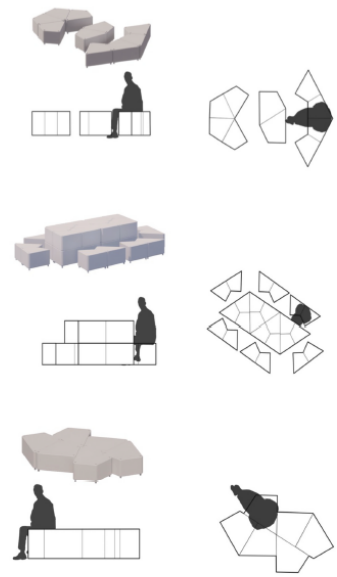
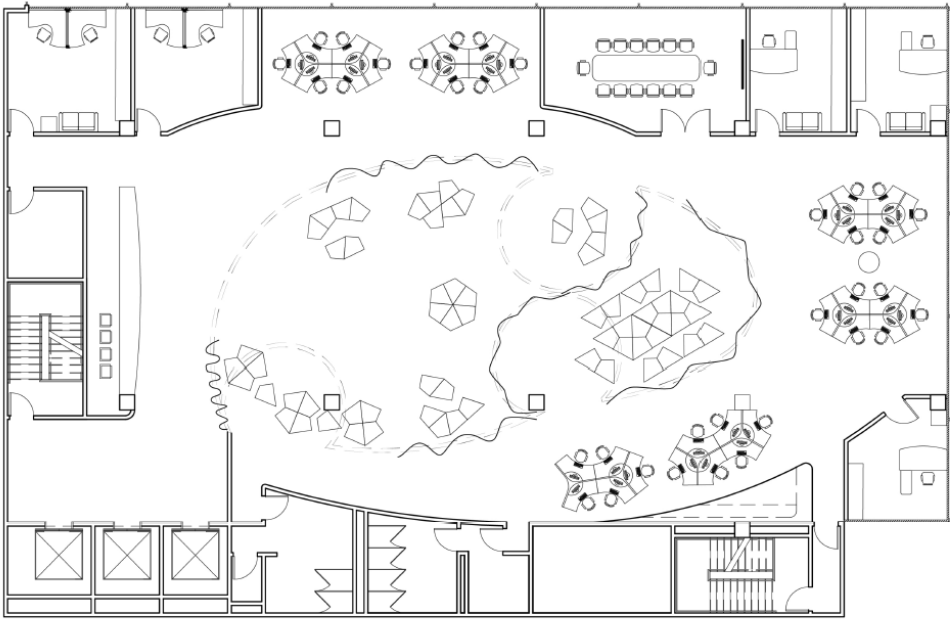


EXPLODED AXON



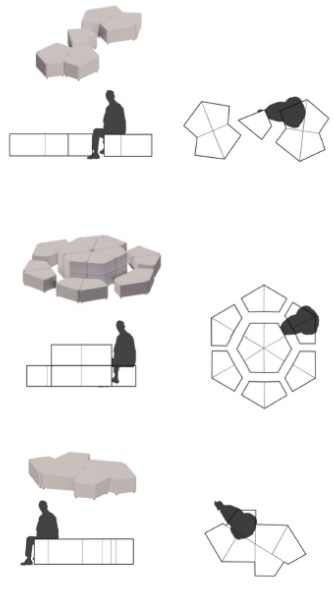
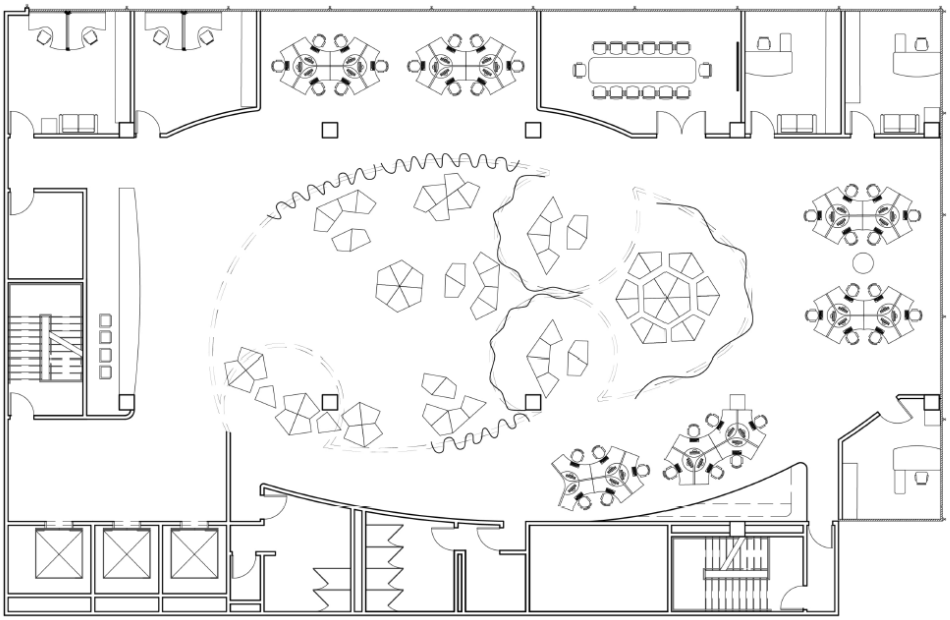
SECTION





DAILY MODE

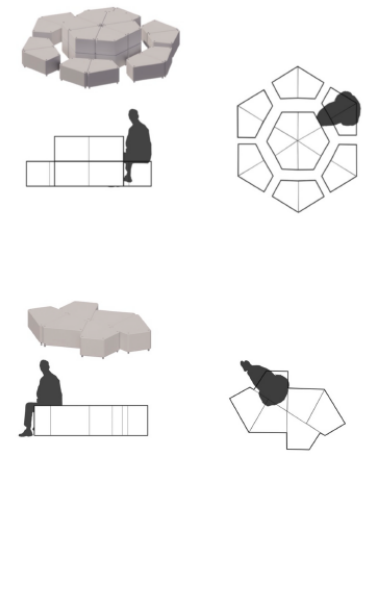
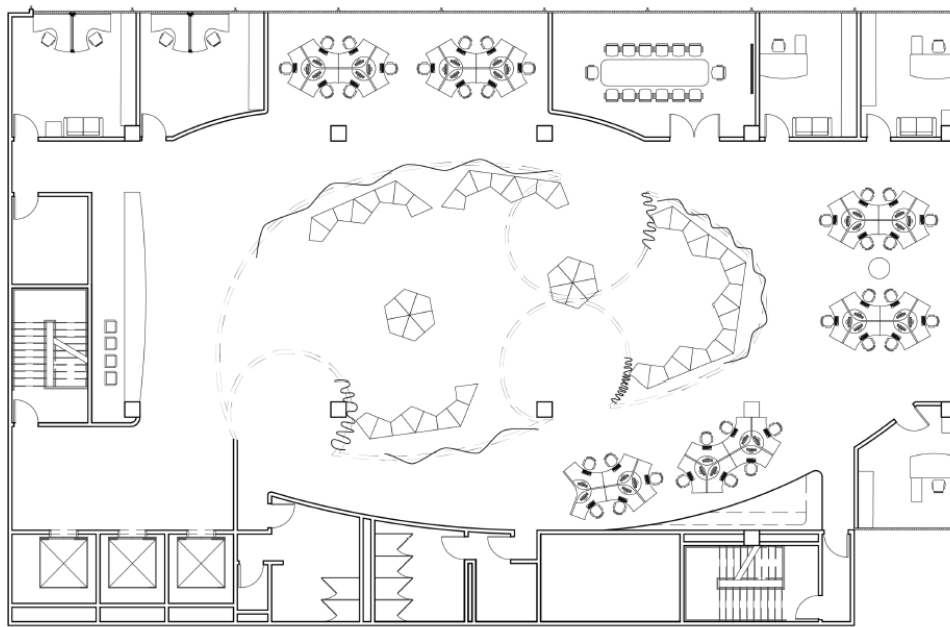
PLAN



CONFERENCE MODE

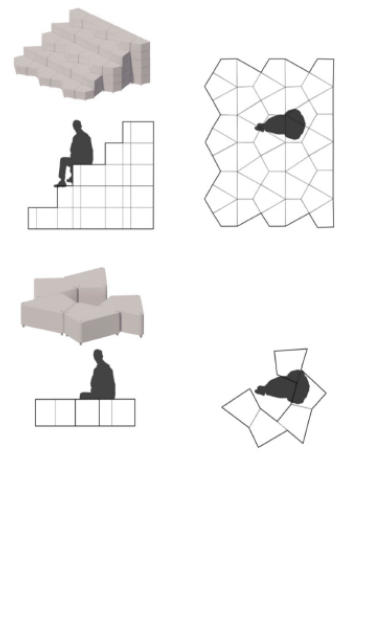
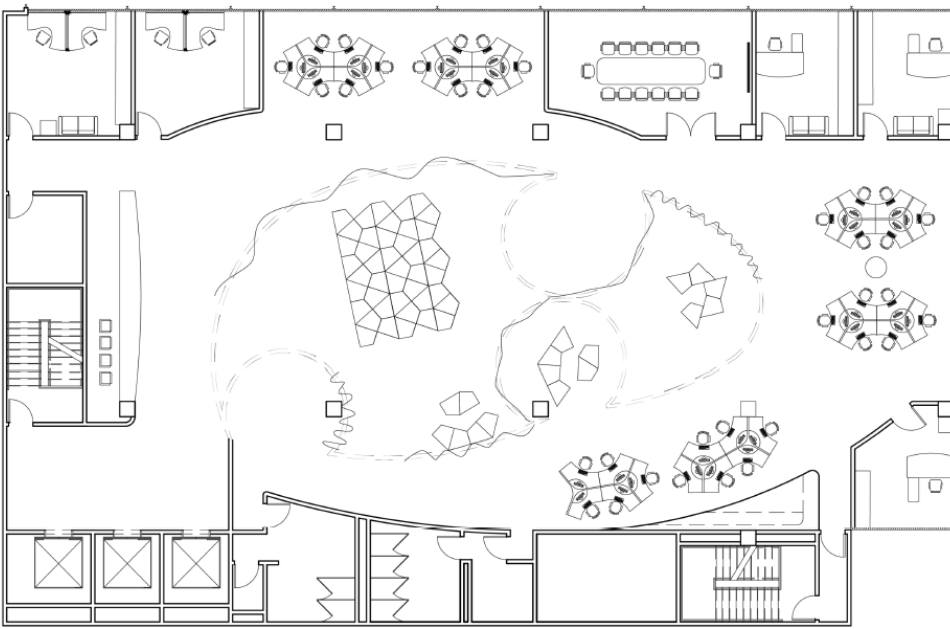
PLAN

# MODULAR FURNITURE



PARTY MODE

PLAN



LECTURE MODE

PLAN

The public space is filled with modular furnitures. It can be arranged as many different ways due to the needs.



# PUBLIC AREA





# OPEN OFFICE



OPEN OFFICE

The open office area is near the window space to get the best sunlight during the day. It is divided from the public space by an acoustic curtain system, which also creates privacy for the central place and quietness for the office space. .

RENDERING



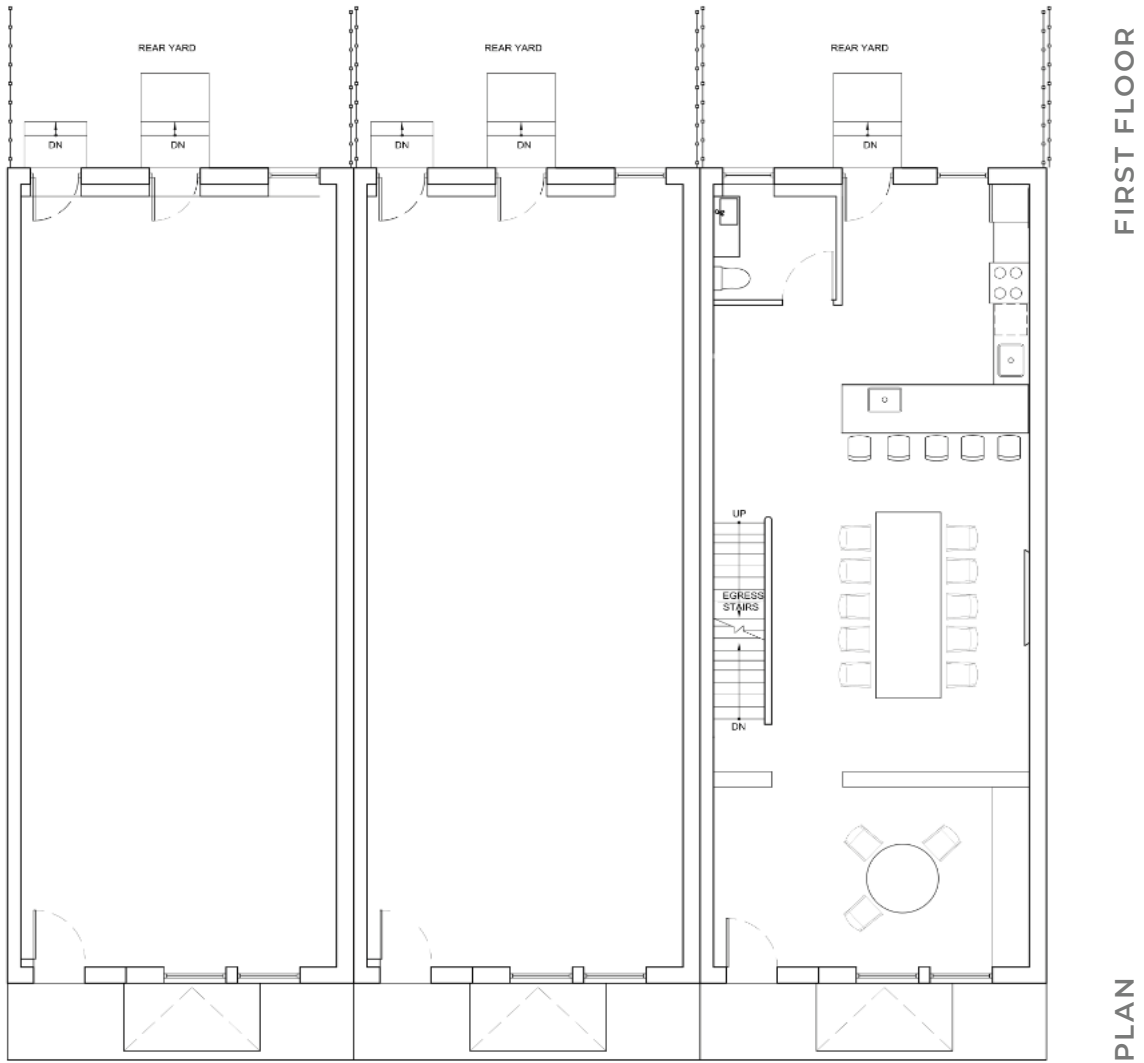
1065 FULTON STREET, BROOKLYN

3.

# HOUSE OF SERENITY

I designed "Modular Office" for UN in my junior year. In the center of the office, there is a multi-function space with modular furniture and curtain system I designed to adapt to different purpose of space

FALL, 2019

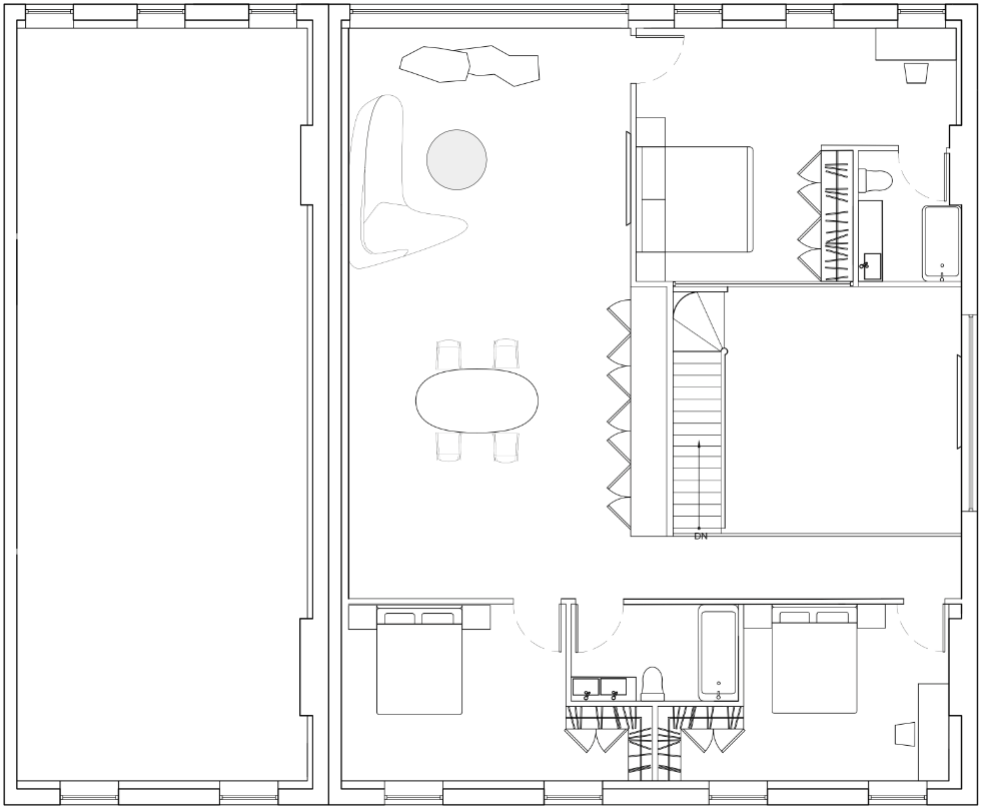


FIRST FLOOR

PLAN

This is a town house with a flower shop on the first floor. A family of 4 is living in the space. The flower shop is on the very entry of the house and kitchen and dining room are also on the first floor.

The main design strategy is inspired by the 1A earl's court street by Sophie Hicks. I use as much natural light as I can.



SECOND FLOOR

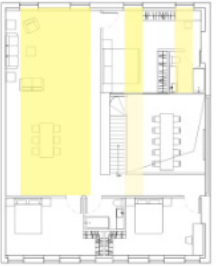
PLAN



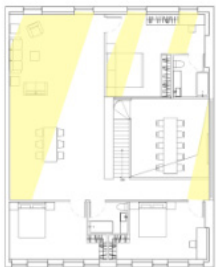
6:00 am



12:00 pm



14:00 pm



18:00 pm

Sun Light Analysis

### Grandma

From Japan  
Lack of ability to hear  
Photographer

### Mom

40  
Japanese Canadian  
Owns a flower shop at 1st floor  
Grows up in London

### Dad

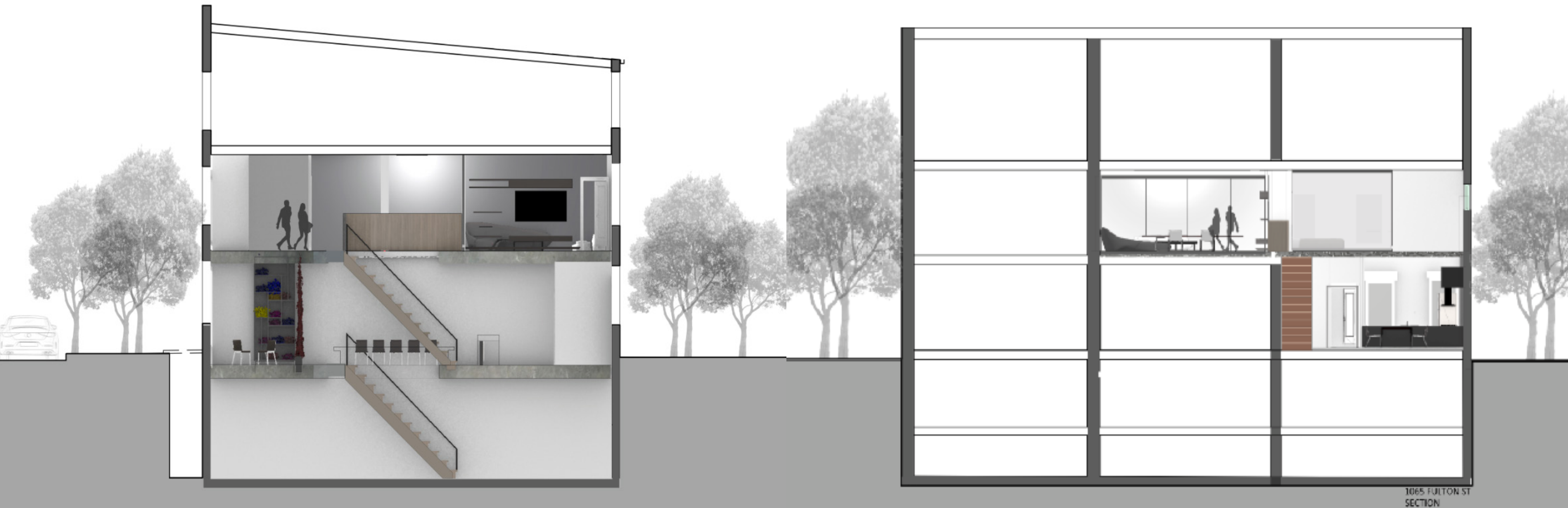
40  
Canadian  
Businessman  
Hates green

### Daughter

18  
Party a lot

# SECTIONS

This home occupies 3 of 9 units of the first and second floor. There are 3 bedrooms on the second floor.





The flower shop is right next to the dinning room. During day time, the dinning room can be used as a rest area for the client of flower shop. During night time, the flower shop is serving the family space.



RENDERING

DINNING SPACE

# FLOWER SHOP



RENDERING

FLOWER SHOP



# LIVING SPACE



RENDERING

LIVING ROOM(DAYTIME)

The living space is at the second floor. All the artificial lights are simulating the sunlight. There is a big glass wall in the bedroom. It is made of one-way mirror so that the sunlight through the skylight and go into the master bedroom while also prevent the privacy.



RENDERING

LIVING(NIGHT TIME)



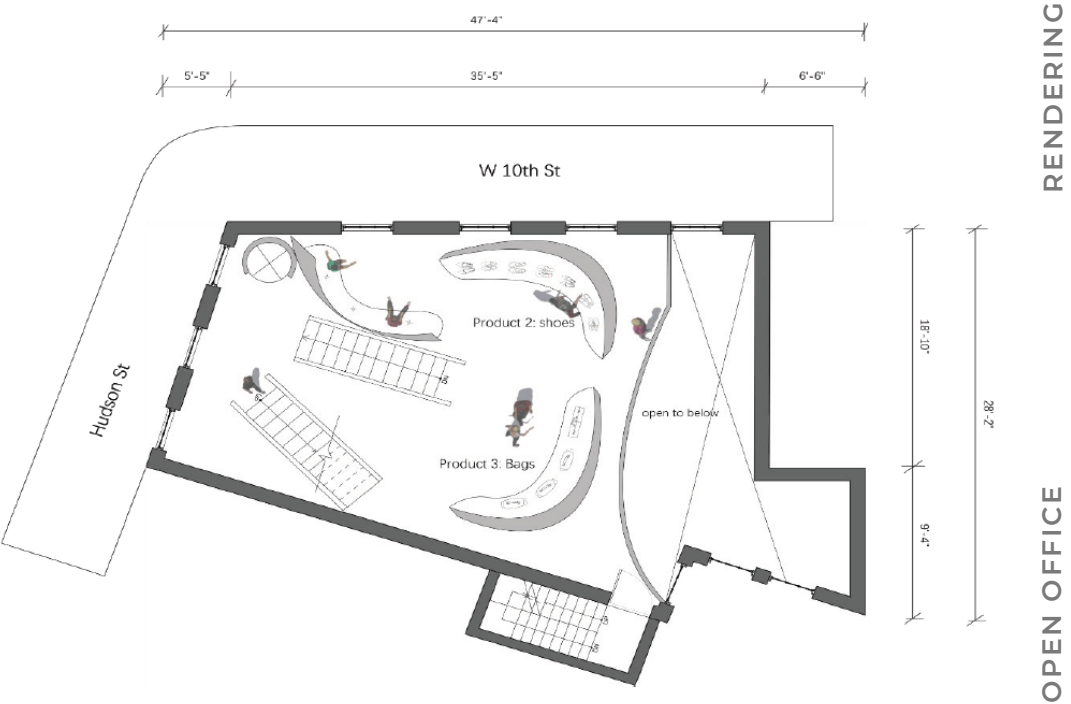
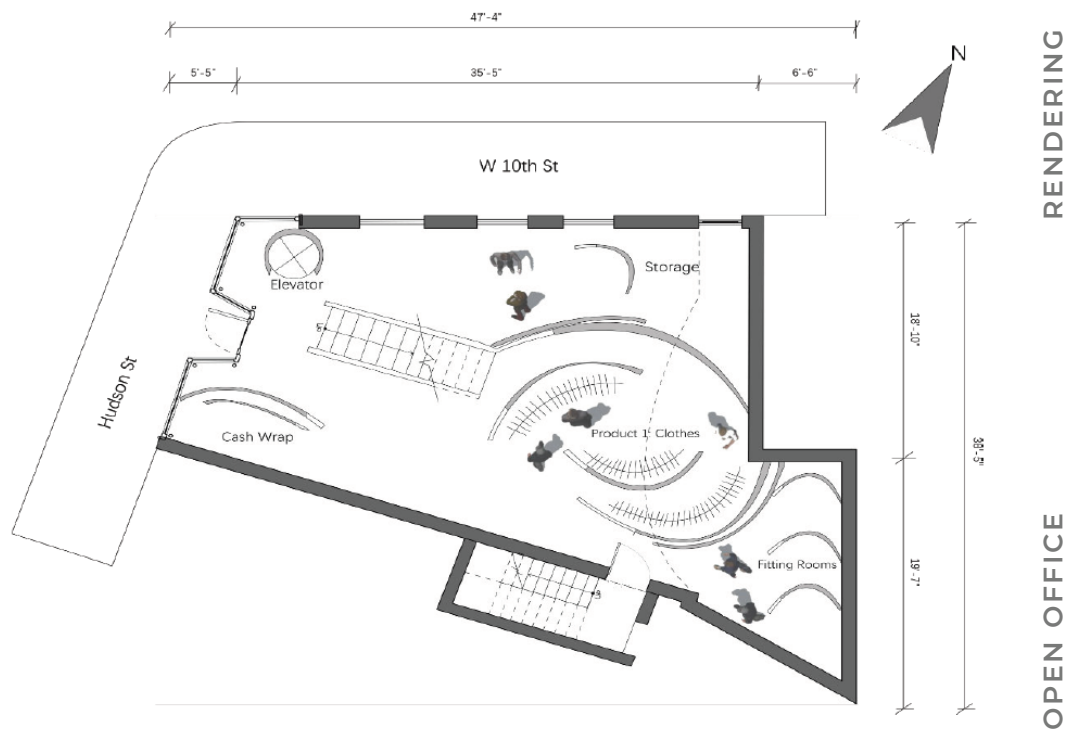
4.

# RECIPROCAL BASIN

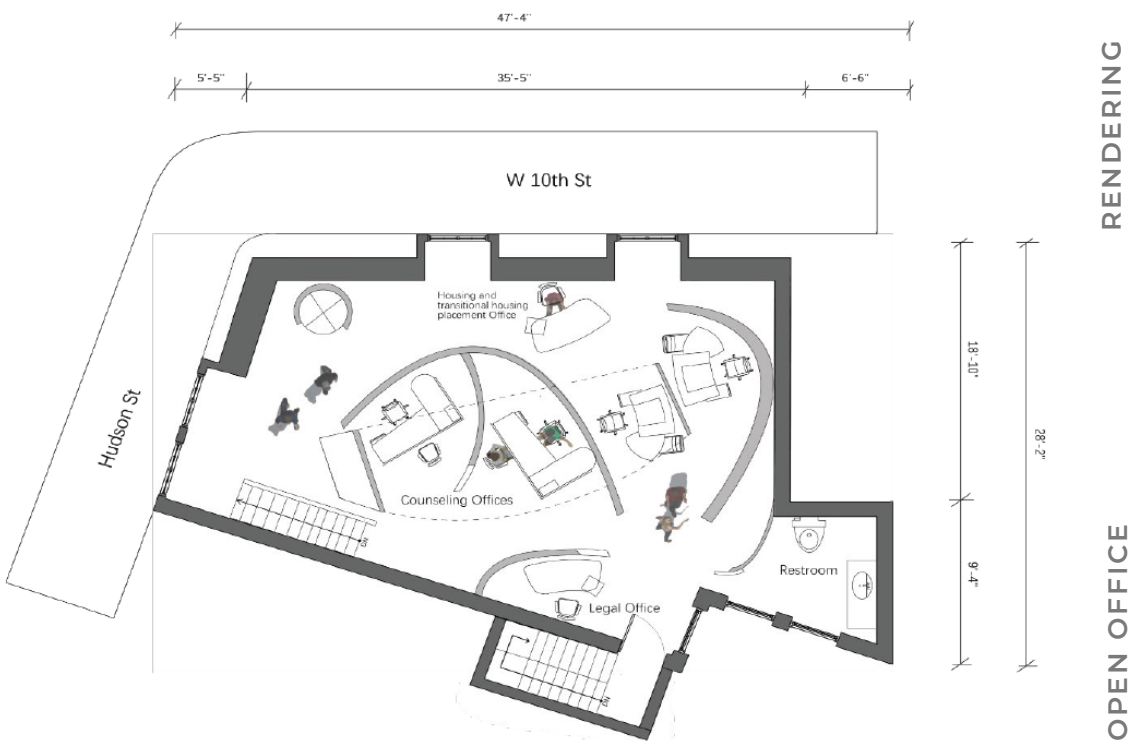
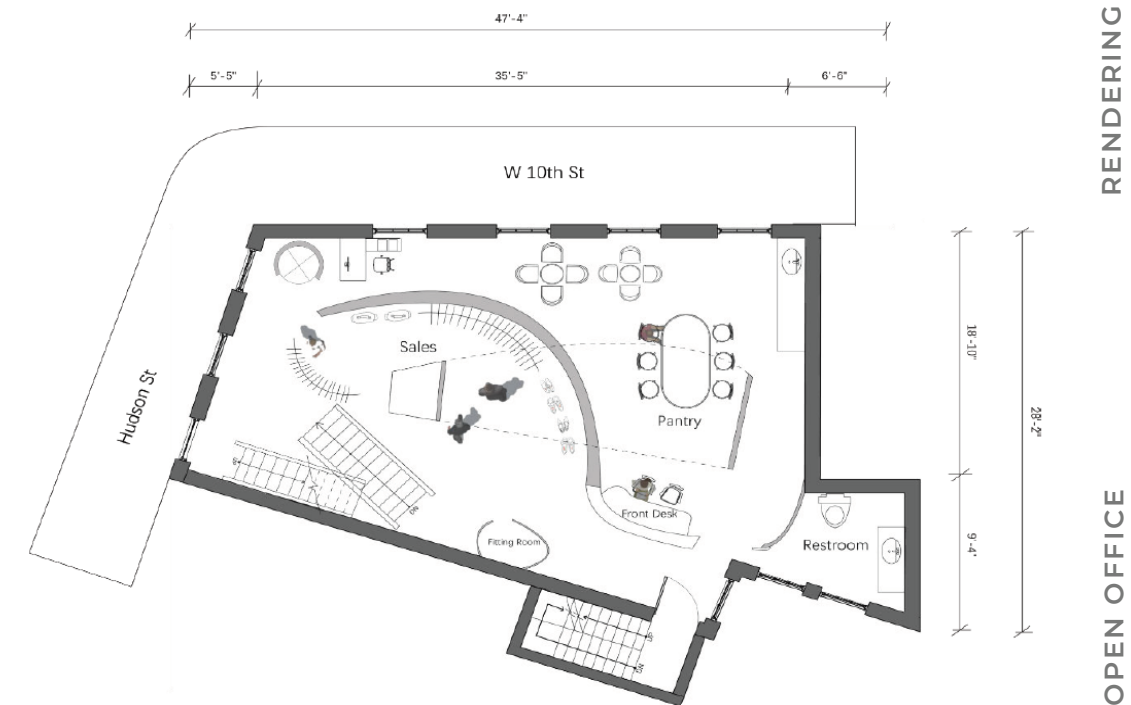
This is a vintage clothes shop and office for Housing Works. I designed this in my sophomore year. I used a lot of metallic material in this design.

SPRING, 2019

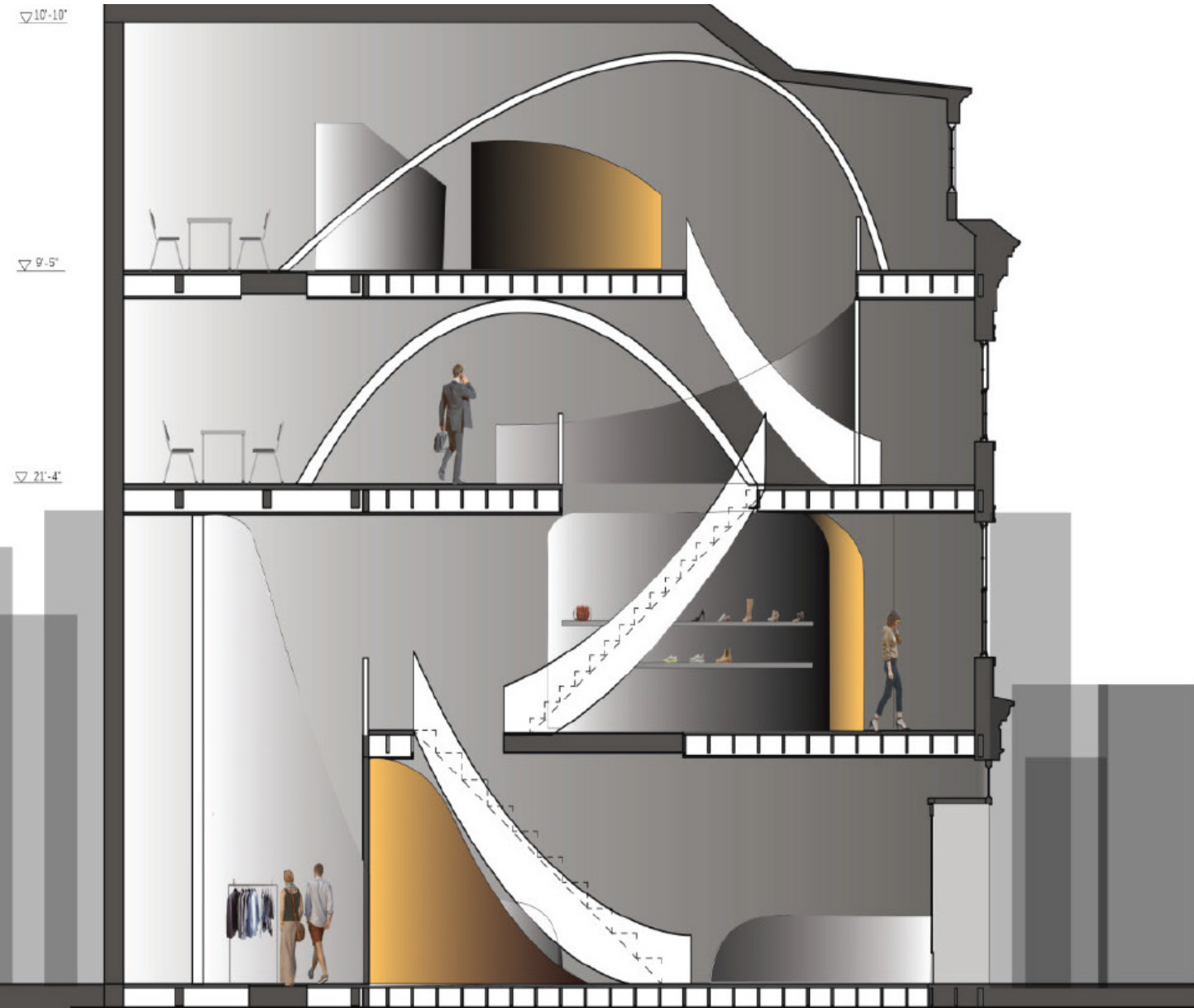




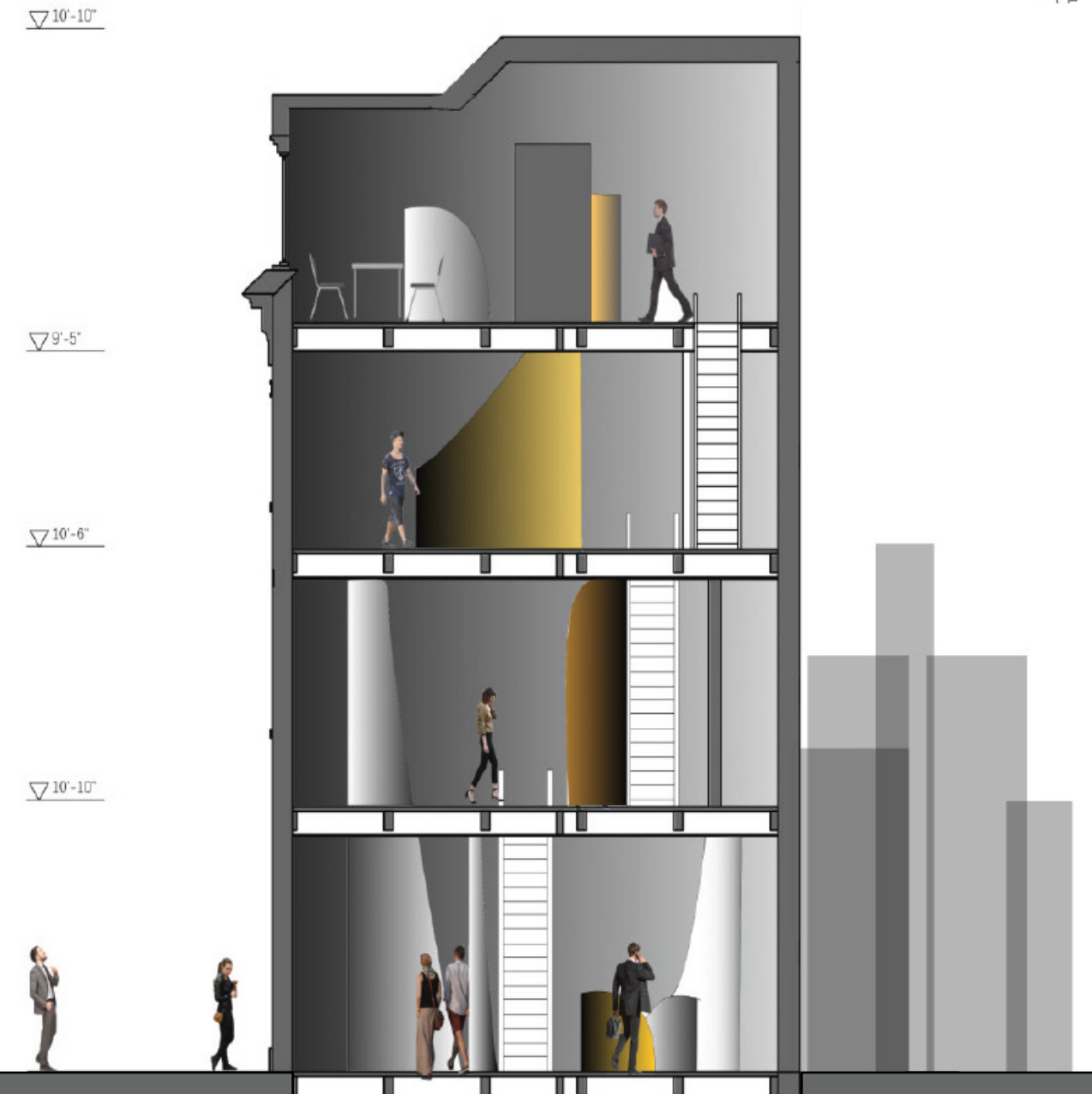
# FLOOR PLANS



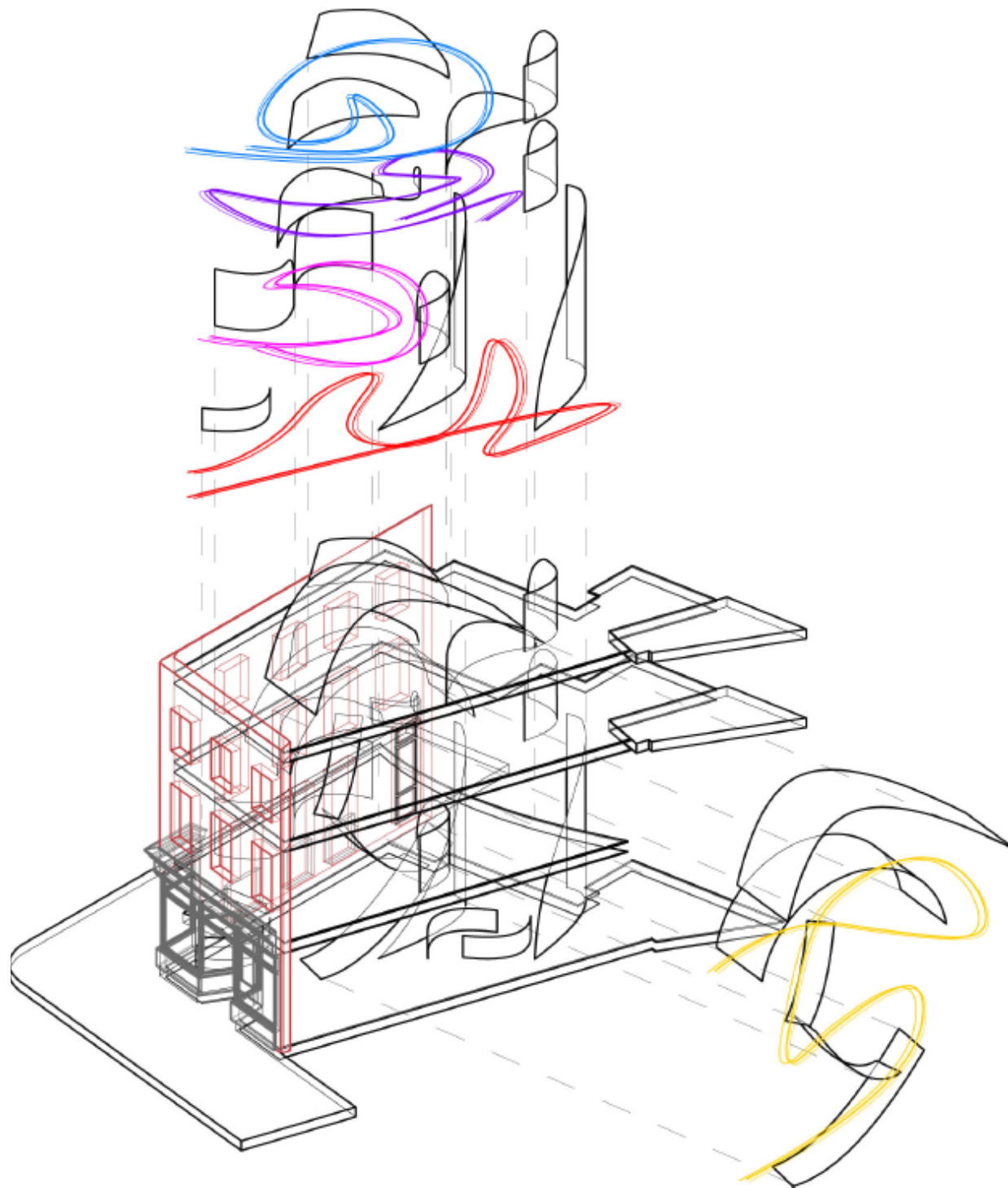
After researching my client, I find the word “reciprocal” and describe my client very properly. The customer and the organization are reciprocal to each other: they get money from their customer but also offer some very cheap and nice service to them such as education, medication and case management. I am designing the thrift store together with a case management office. The first and second floor are the main selling part of the thrift store. The third floor is a transition floor. There are discount place and the reception desk and lounge area of the management office. The whole top floor is office.



# SECTIONS

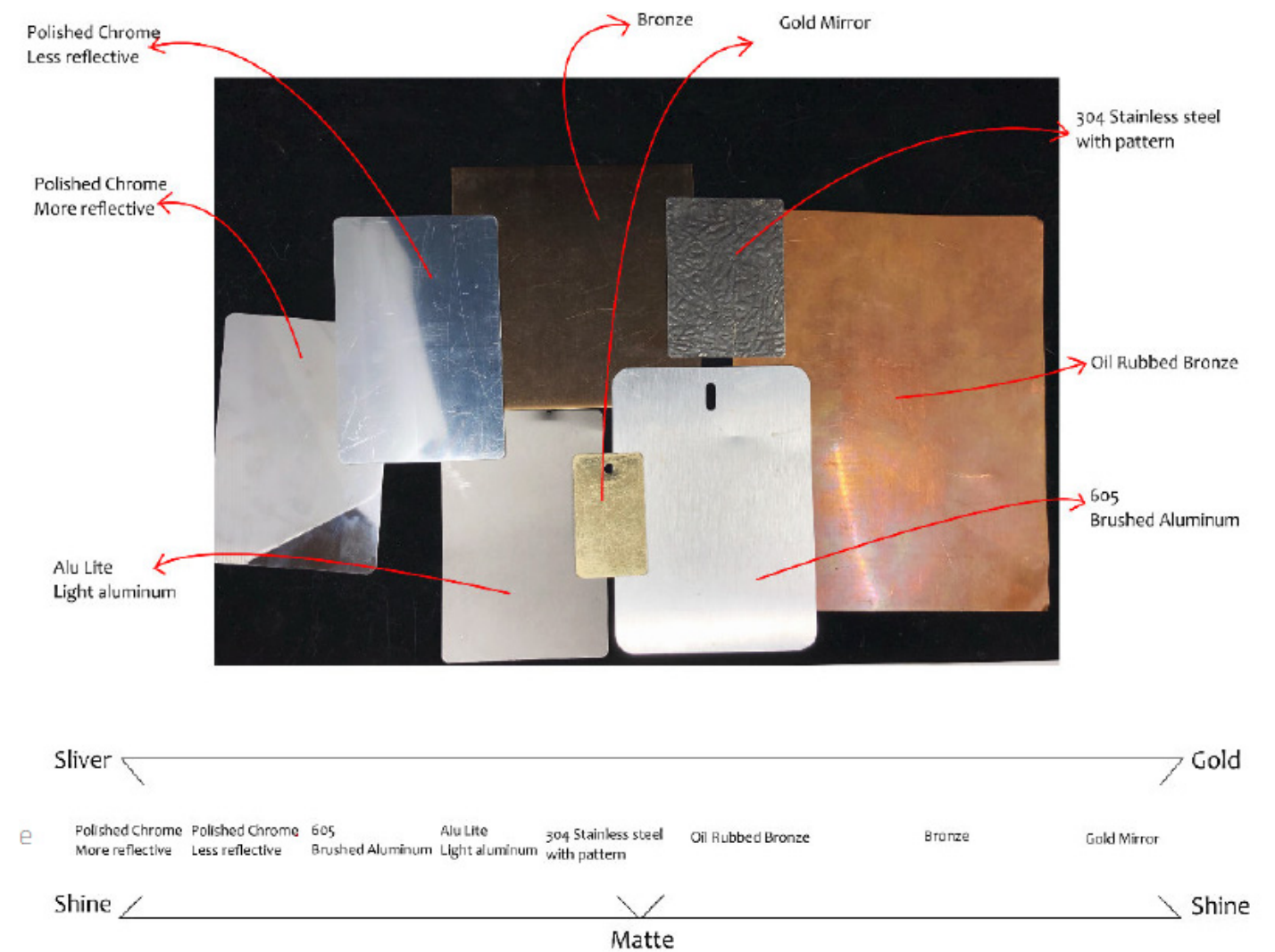


# EXPLODED



# MATERIAL

I used gold and silver material for different color ranges. I also choose different shiness metal for more diversities.

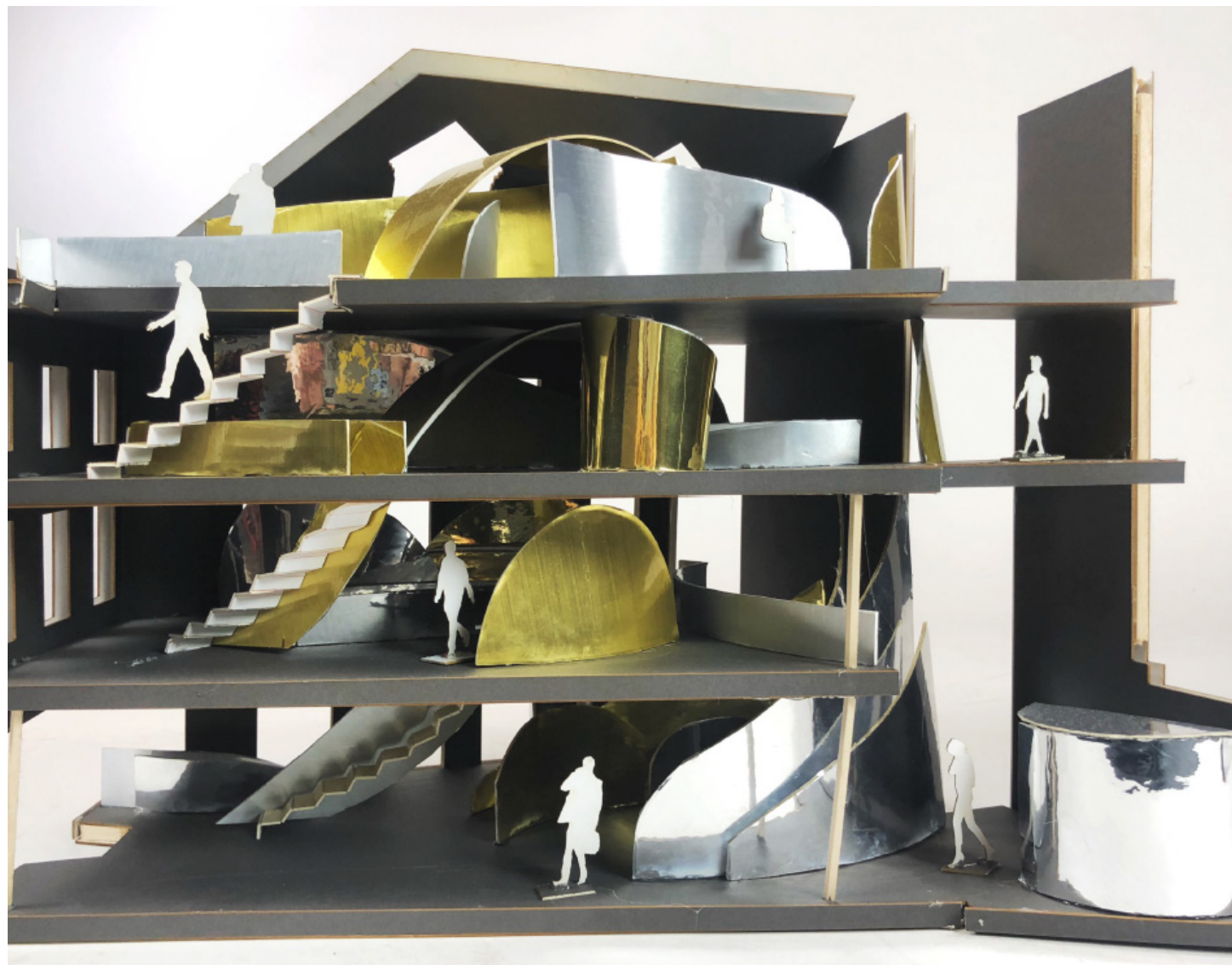






RENDERING

OPEN OFFICE



RENDERING

OPEN OFFICE

# MODEL

I used gold and silver material for different color ranges. I also choose different shiness metal for more diversities.



RENDERING

OPEN OFFICE

5.

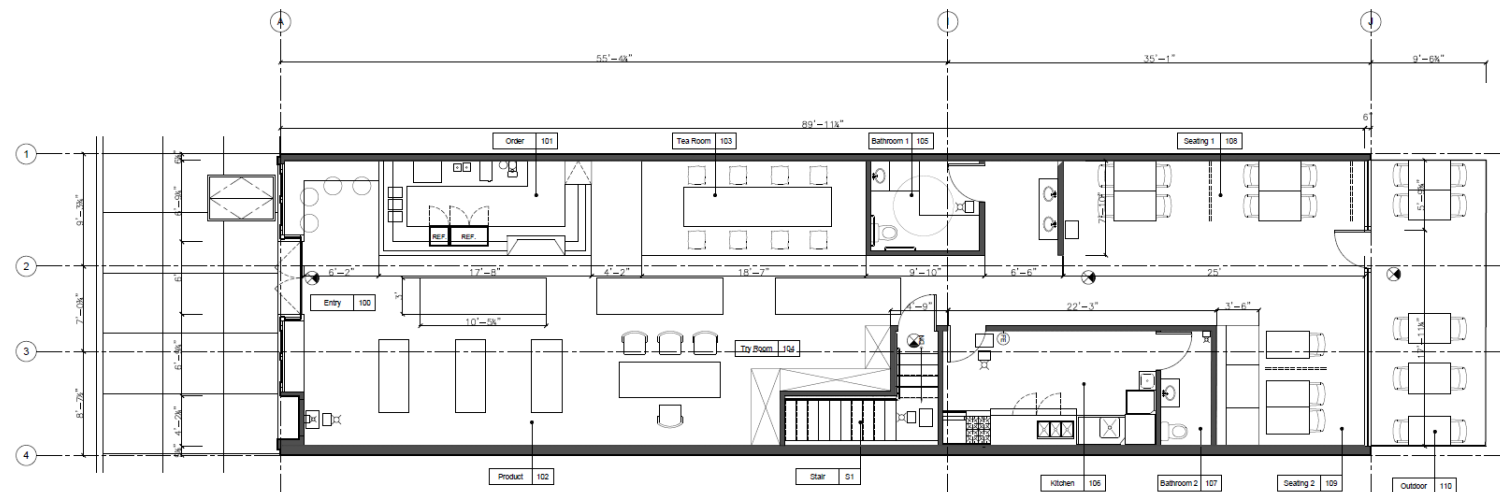
# 3 FT ABOVE UNDER

TEAM WORK WITH JIAWEI FU AND HANYU SHUANG

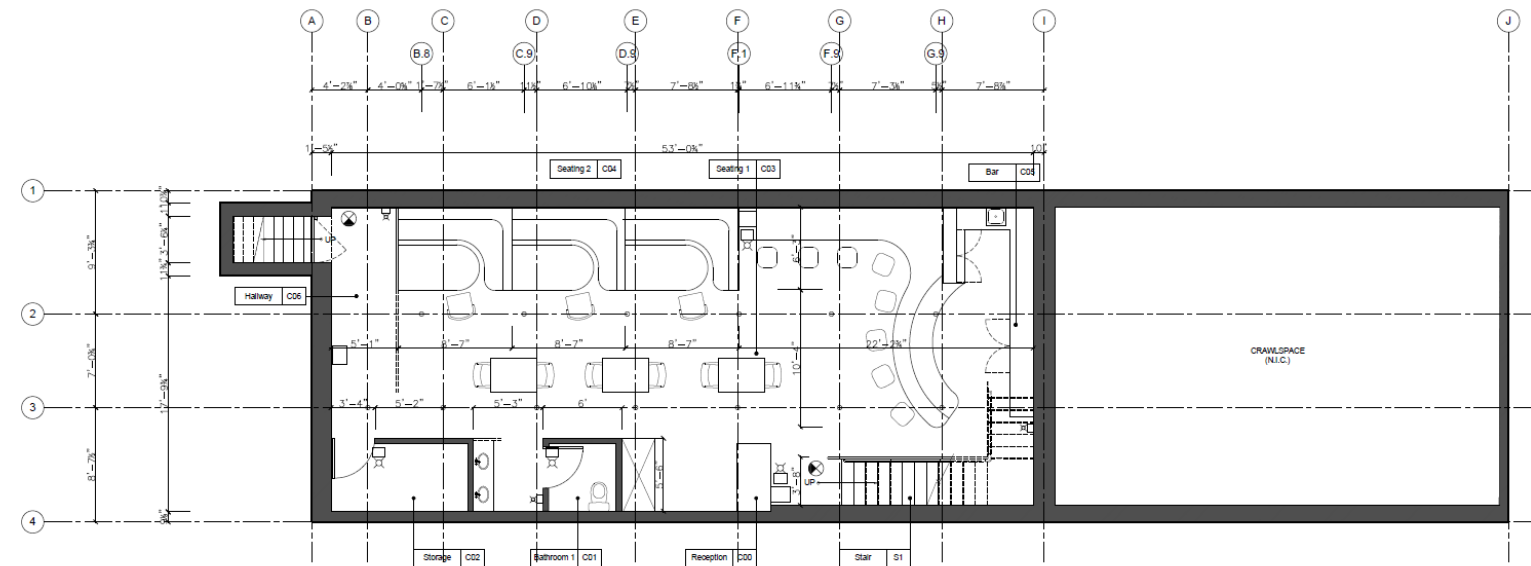
This is a tea house and bar. During the daytime, it is a traditional Chinese tea house on the ground floor. The bar is on the cellar level and only open at night

FALL, 2020





# PLANS



RENDERING

OPEN OFFICE

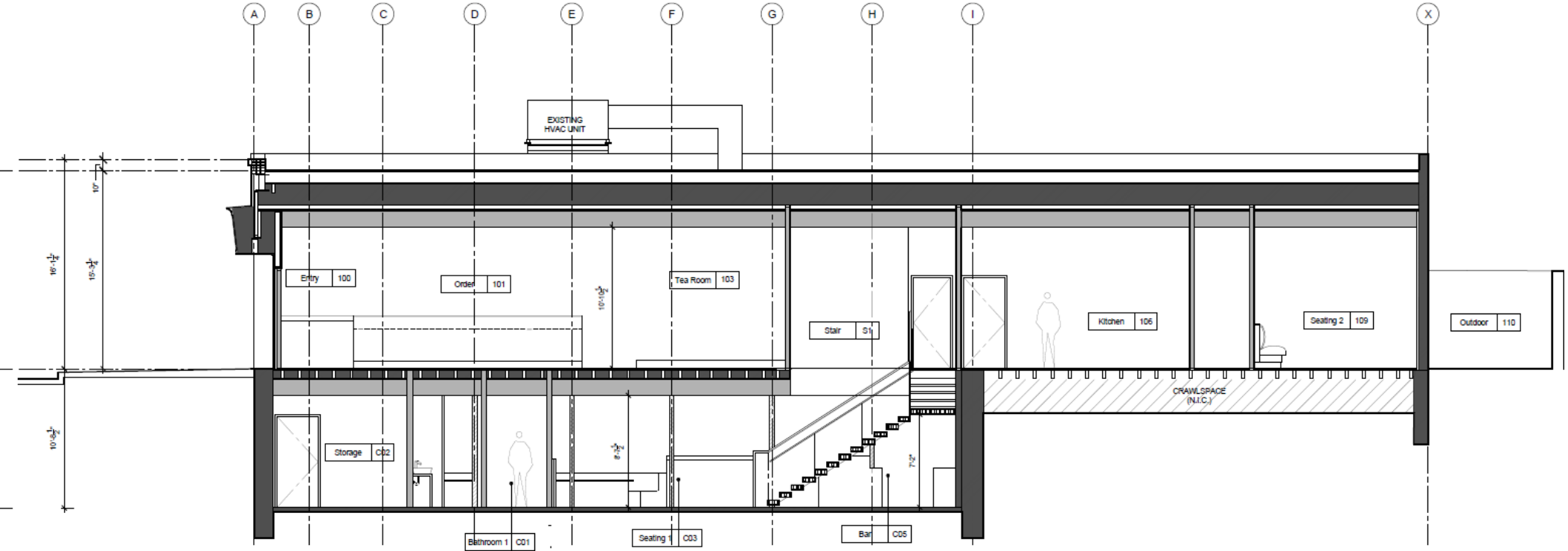
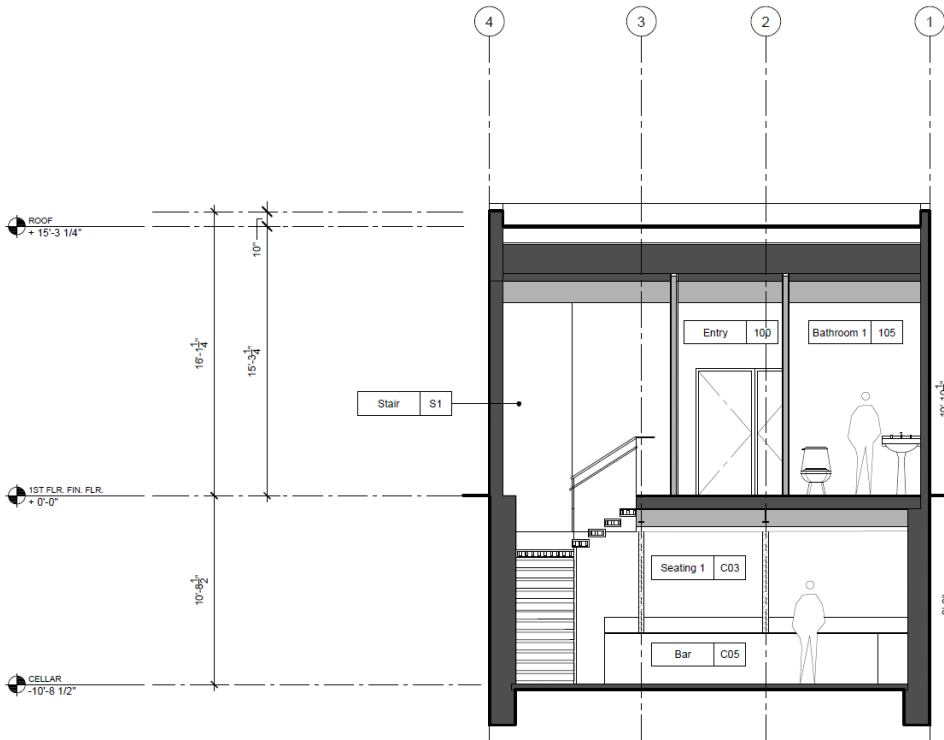
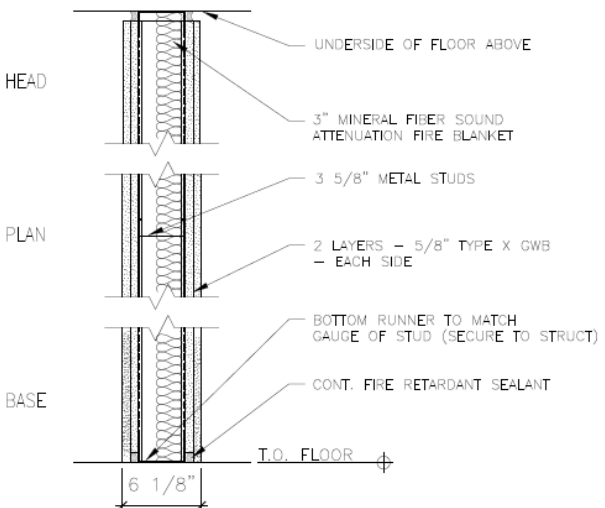
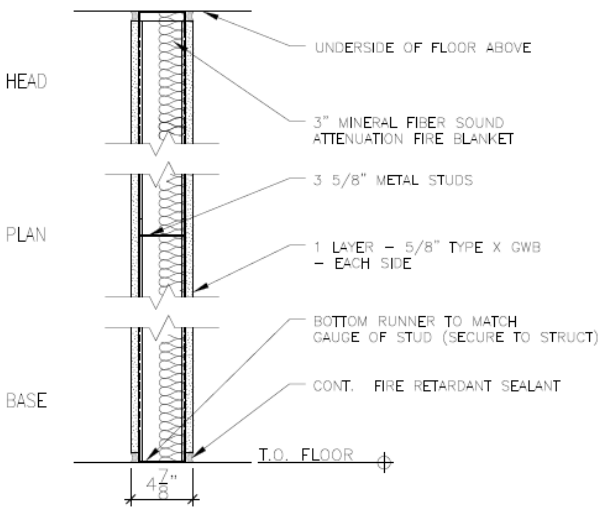
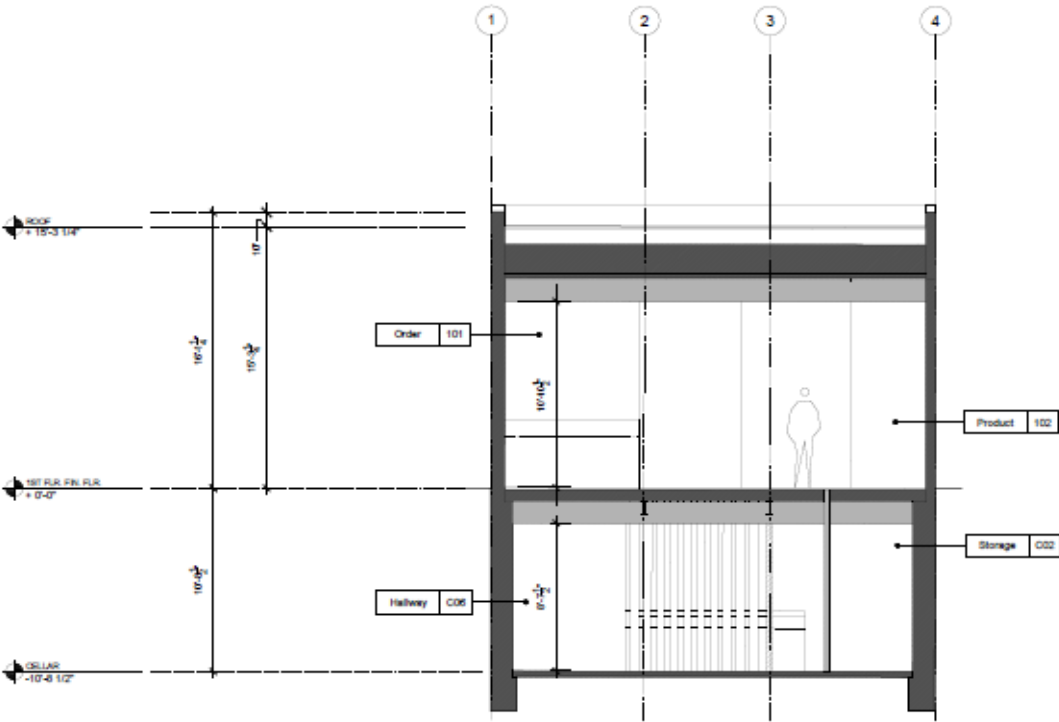


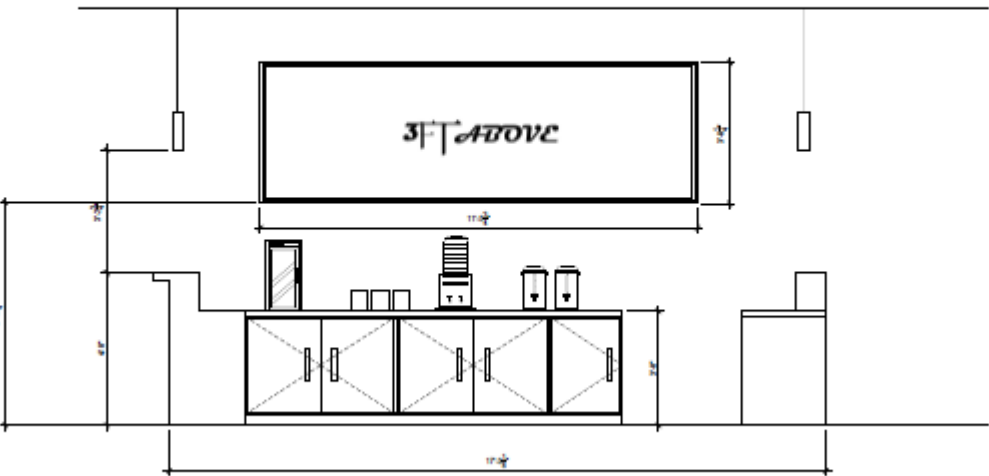
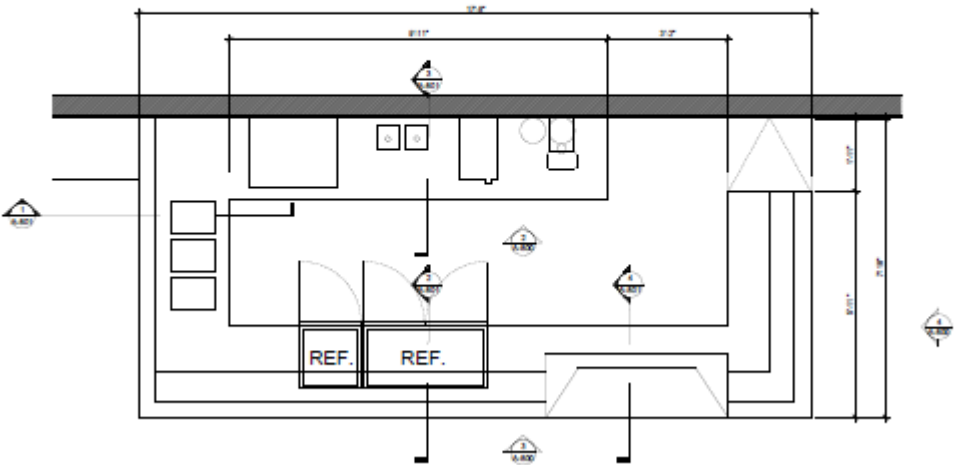
RENDERING

OPEN OFFICE

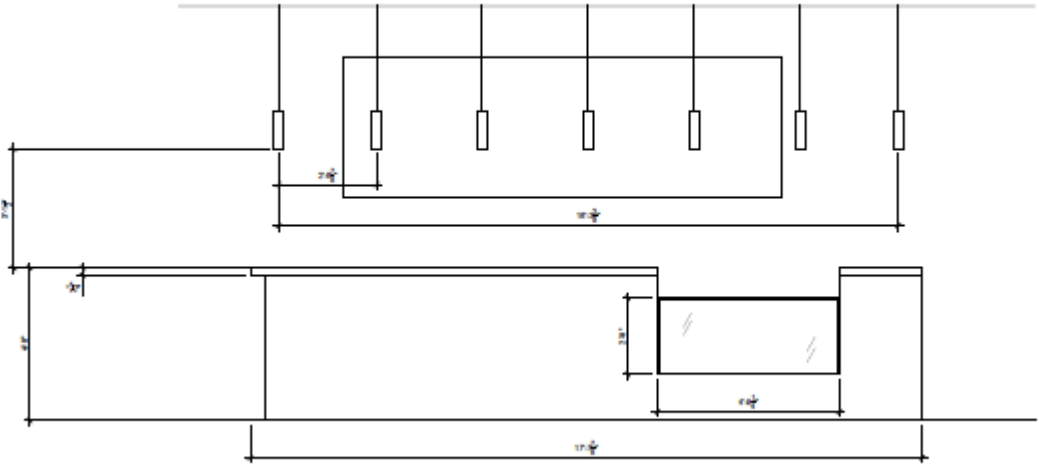
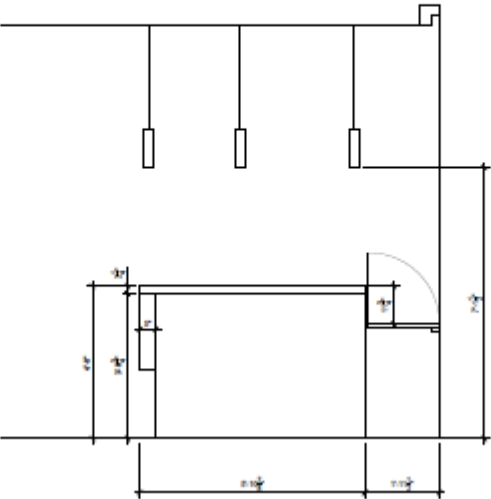


# SECTIONS

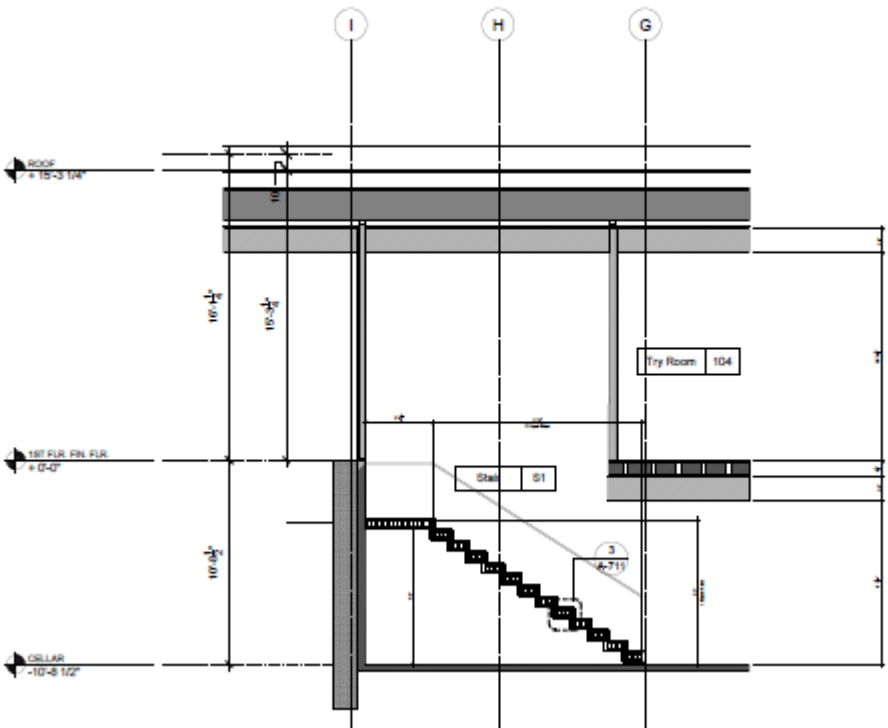
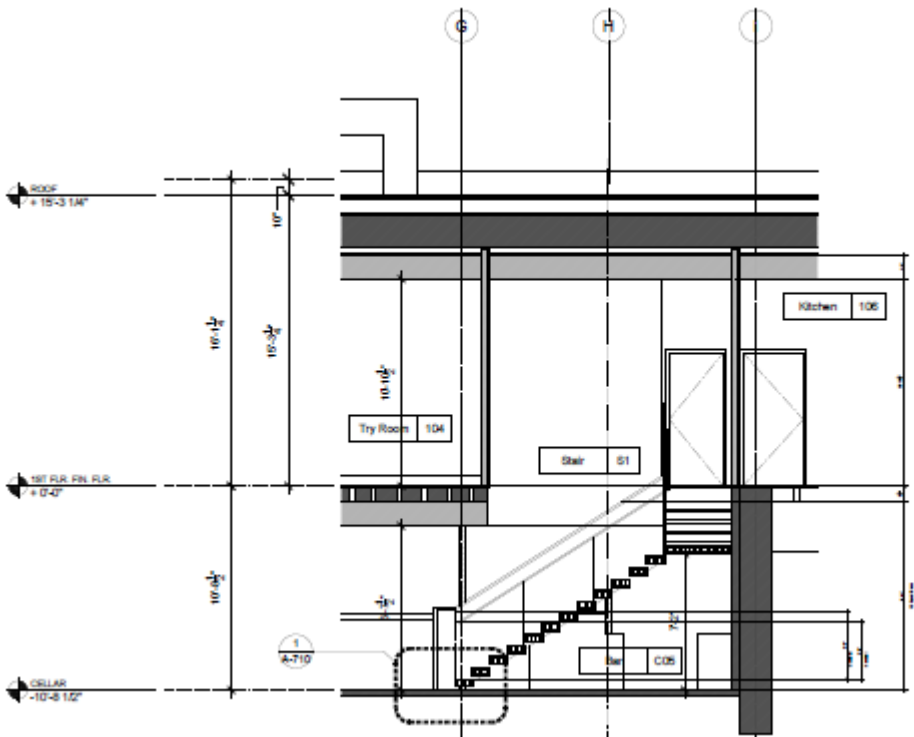




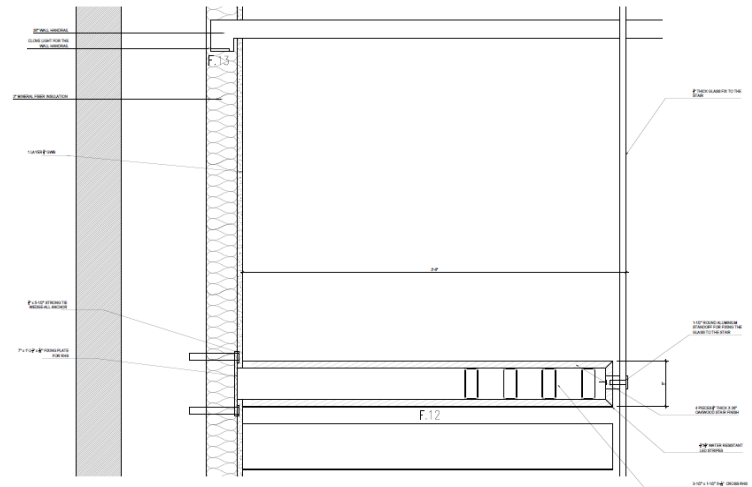
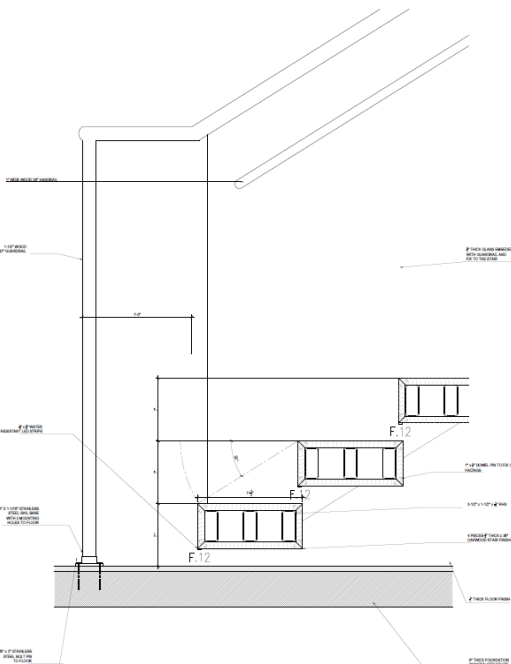
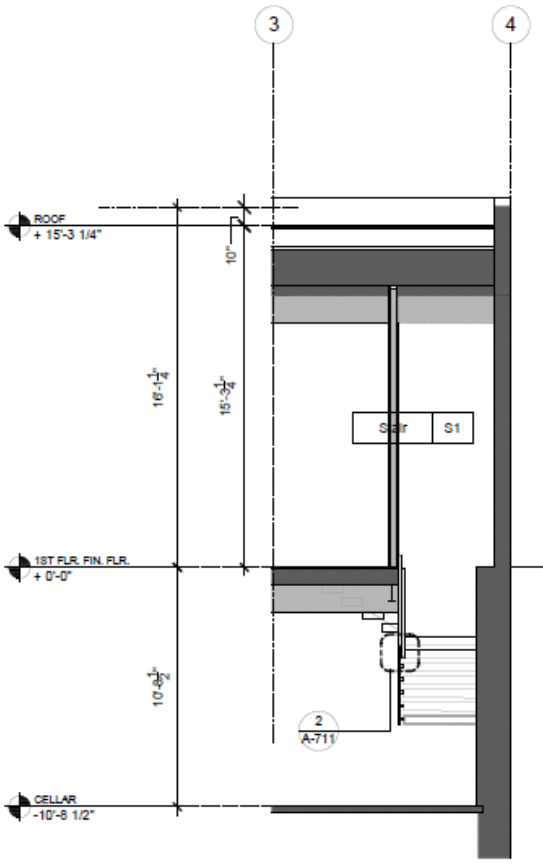
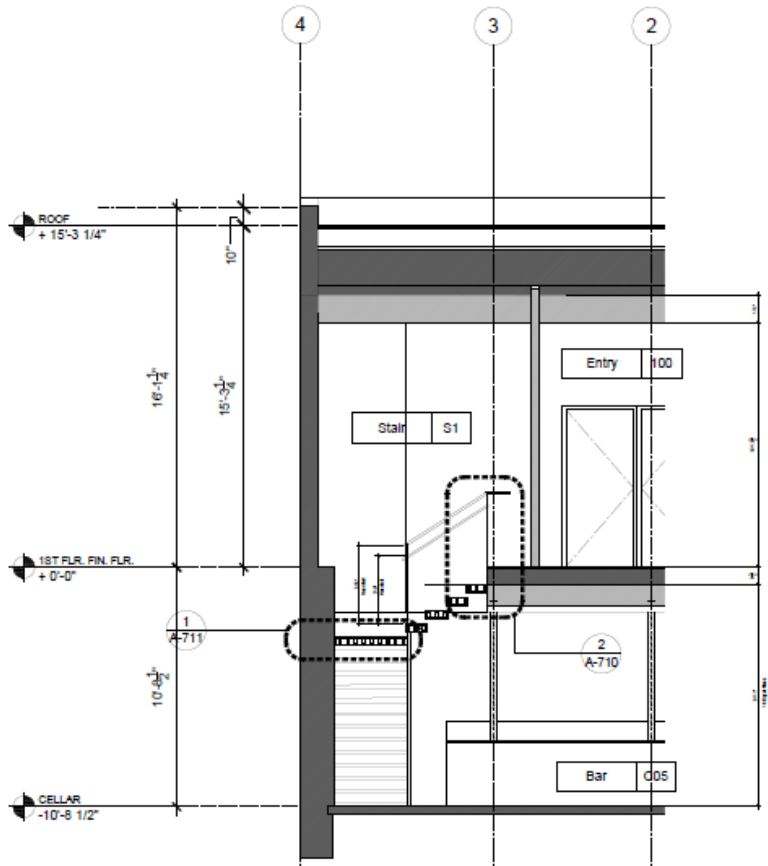
# MILLWORKS



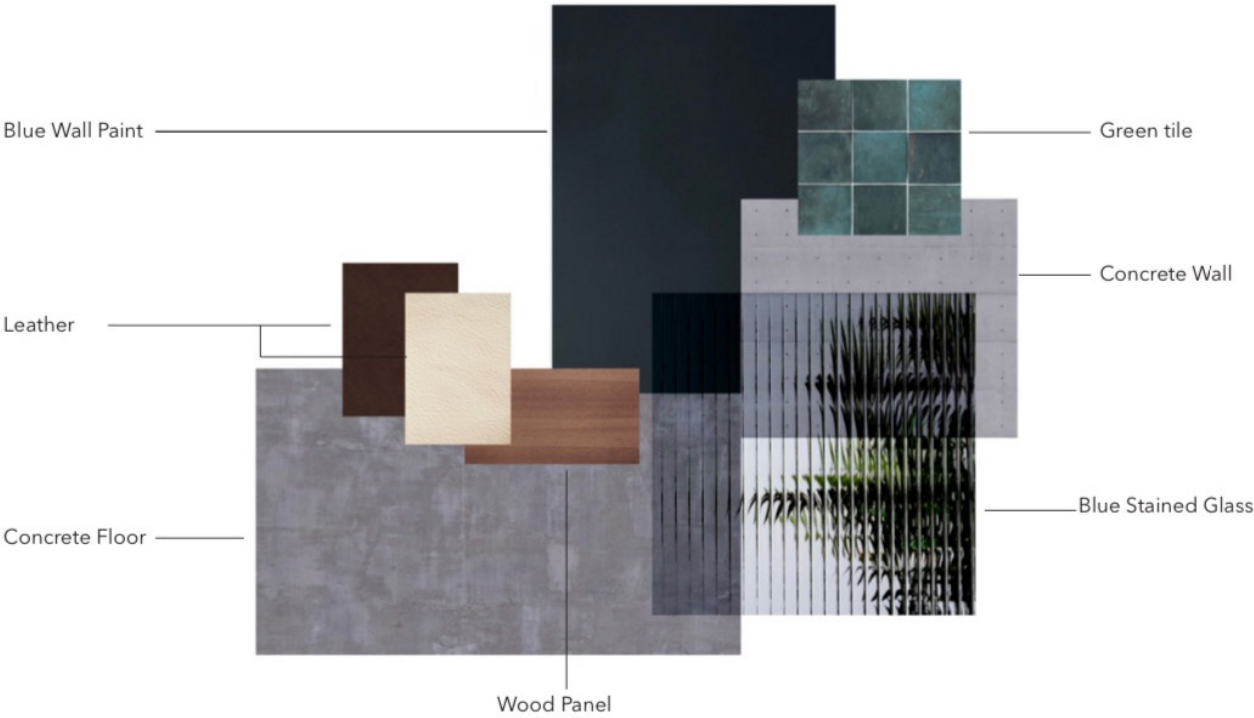




# STAIRS

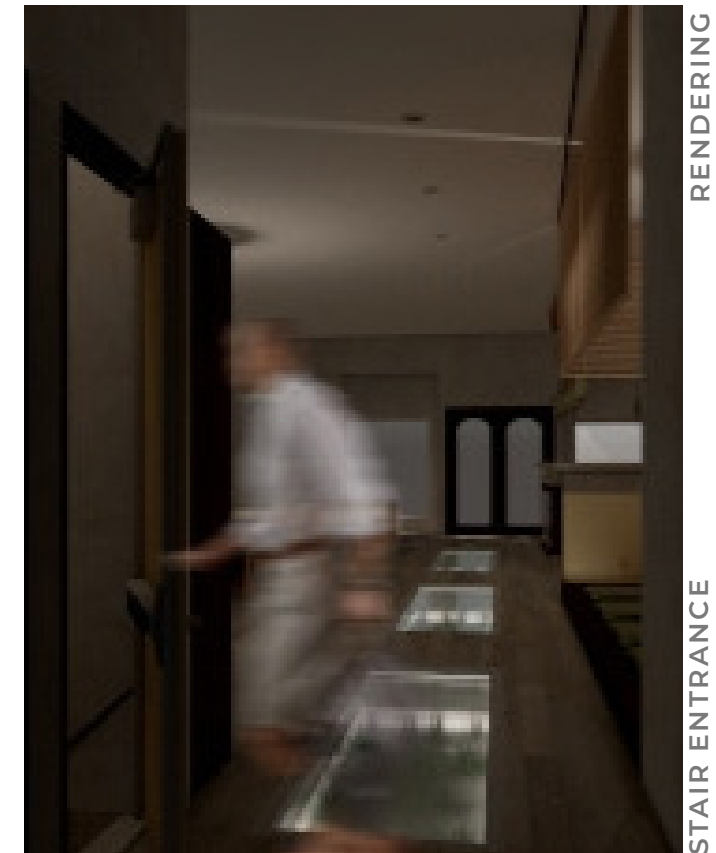


# MATERIALS





# ACCESS TO THE BAR





6.

TAHITI

# BEETLES BUNKER

The Beetles bunker is a place for future human refugee due to the pandemic. People and beetles are living together in this space while human are farming the beetles because they serve as the main food source.

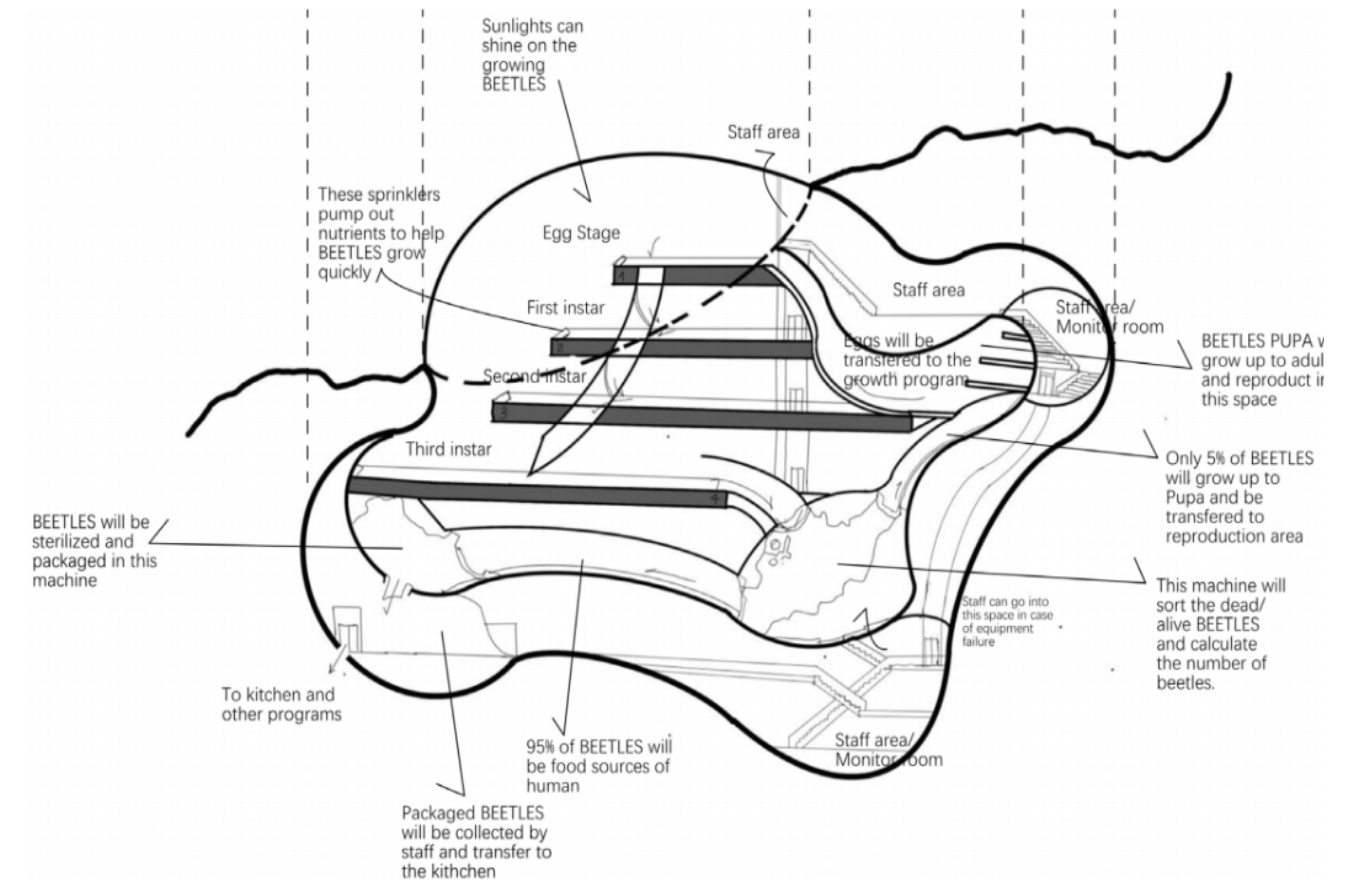
FALL, 2020



i am using the upper system of beetles farming to breed beetles in my bunker. Based on this cycle and concept, I decided to have 6 different stages: Eggs, First instar, Second instar, Third instar, Reproduction and Sorting. I placed all of them in a bunker and let them be a cycle.

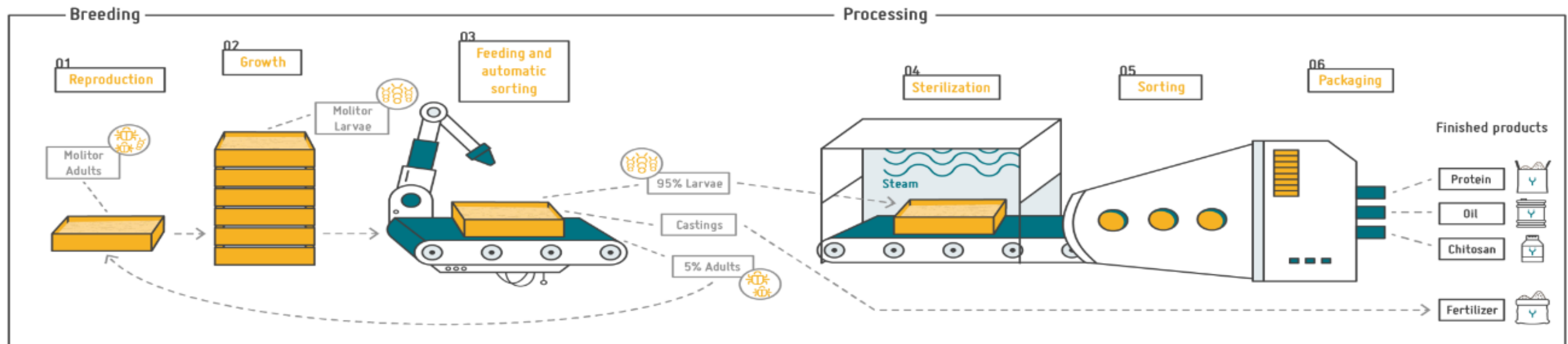
Typically, only beetle larvae—and not fully developed—beetles are eaten by people. In Cameroon, women who harvest the palm weevil put their ears to the trunk of a palm tree in an attempt to listen for larvae. The women are listening for beetles in instar, the most delectable developmental phase for dining.

# BEETLES CYCLE



BEETLES FARM

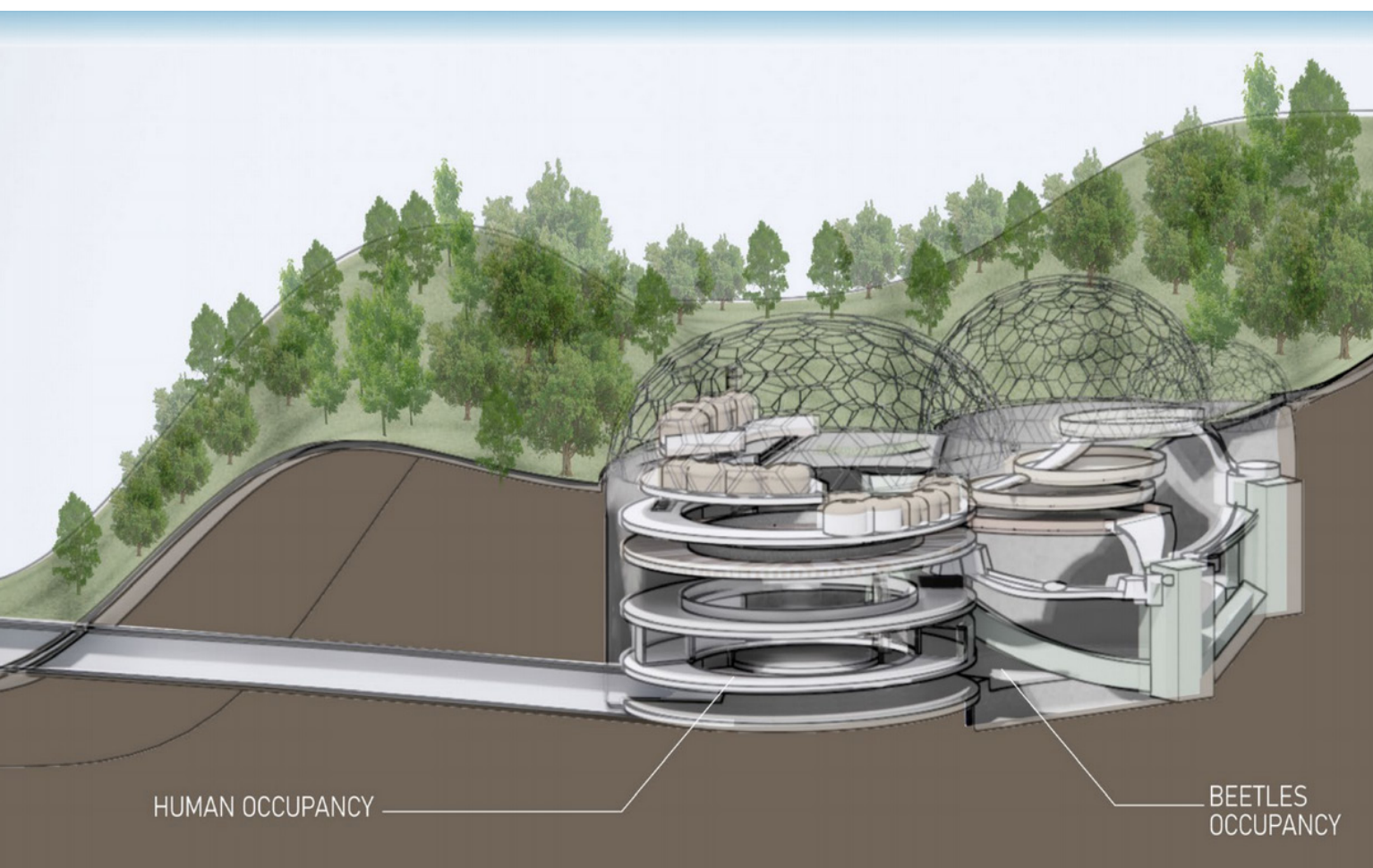
CONCEPT SECTION



BEETLES FARM

CYCLE

In my context of future world, the pandemic is out of control. Lots of animals dies because of it. In a result, beetles become a kind of very effective food source.

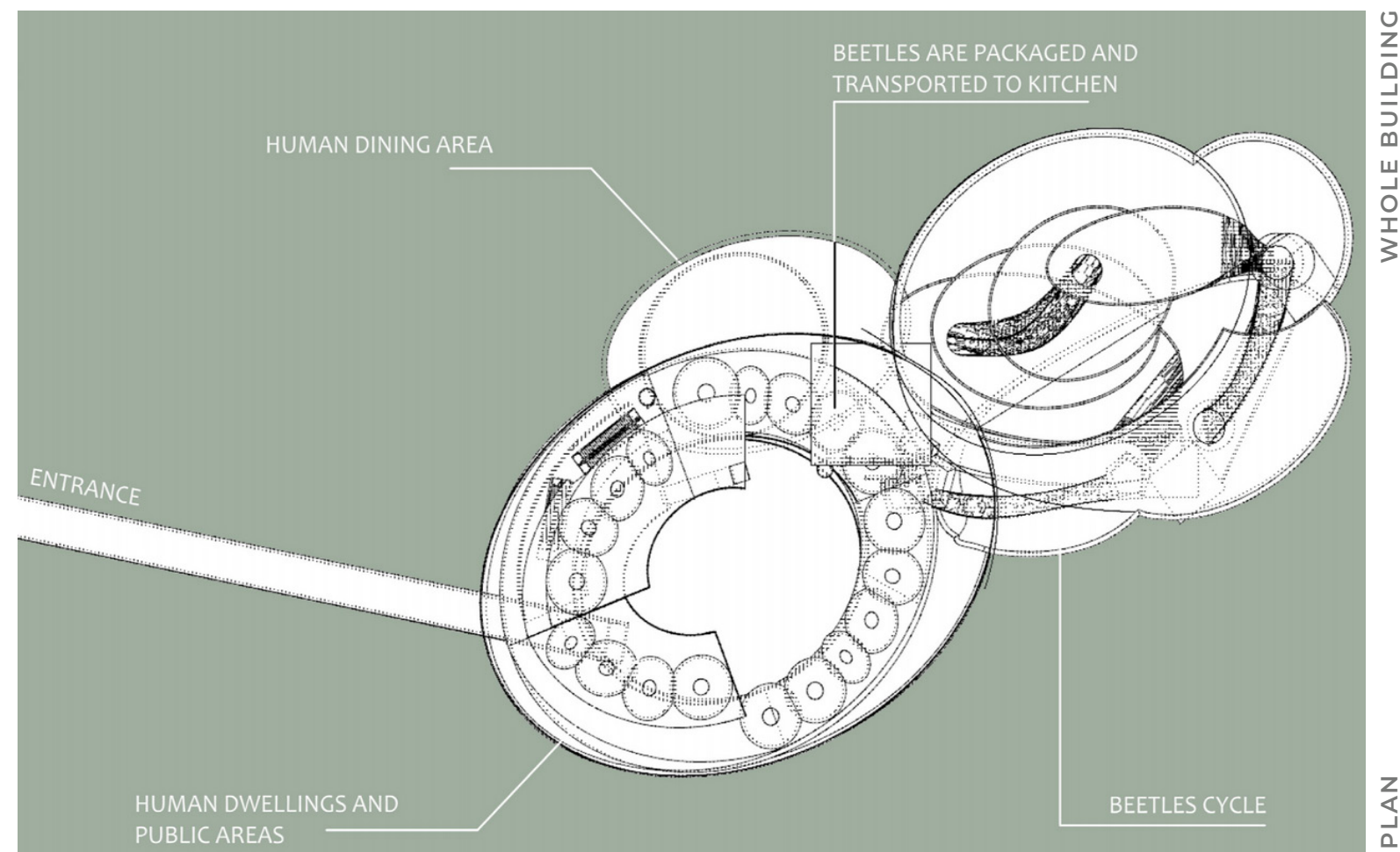


WHOLE BUILDING

SECTION

# BEETLES CYCLE

In my building, there are two parts of it: Beetles occupancy area and human occupancy area. They live separately but are affecting each other greatly in the space. Humans are farming the beetles and beetles serve as the main food source.

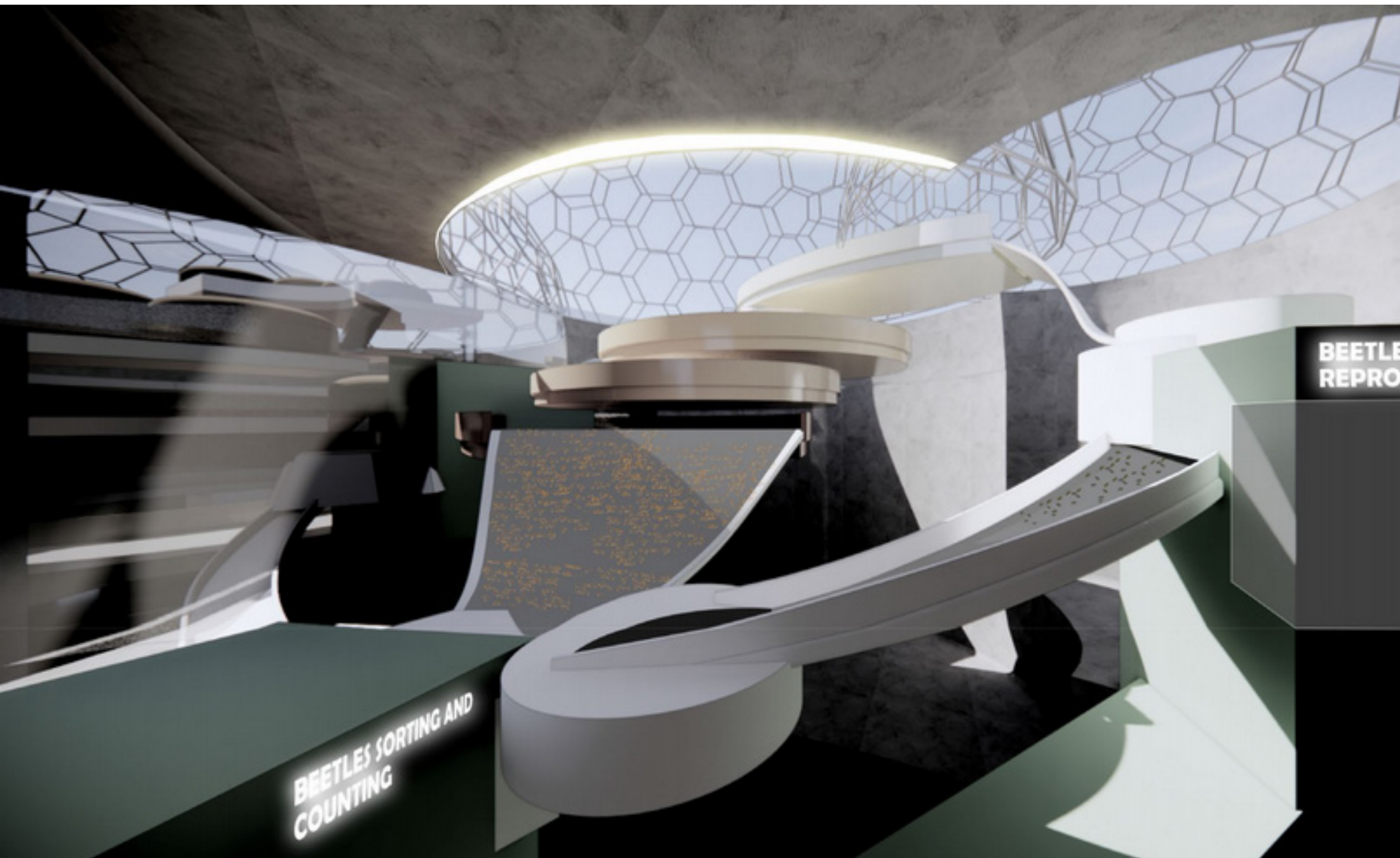


WHOLE BUILDING

PLAN



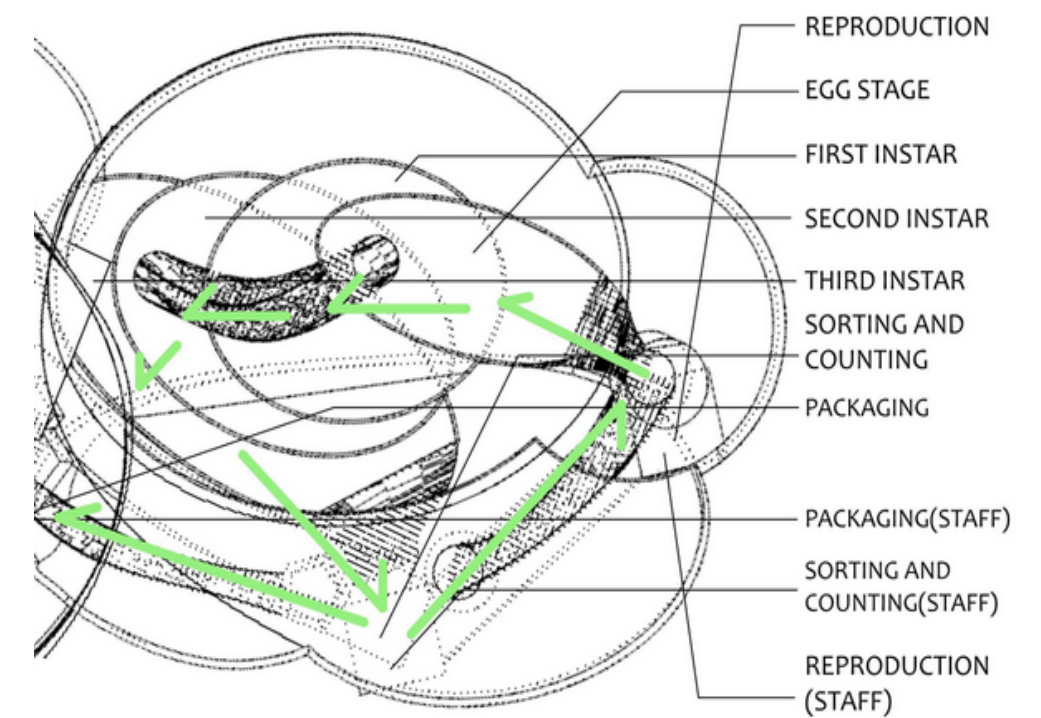
There are several platforms in the beetles occupancy area and the beetles are transport by the belts. I also open up the ceiling because the higher temperature can speed up the time of growth of beetles. Average timeline is 10-15 days for a beetle grown up to be edible.



BEETLES OCCUPANCY

RENDERING

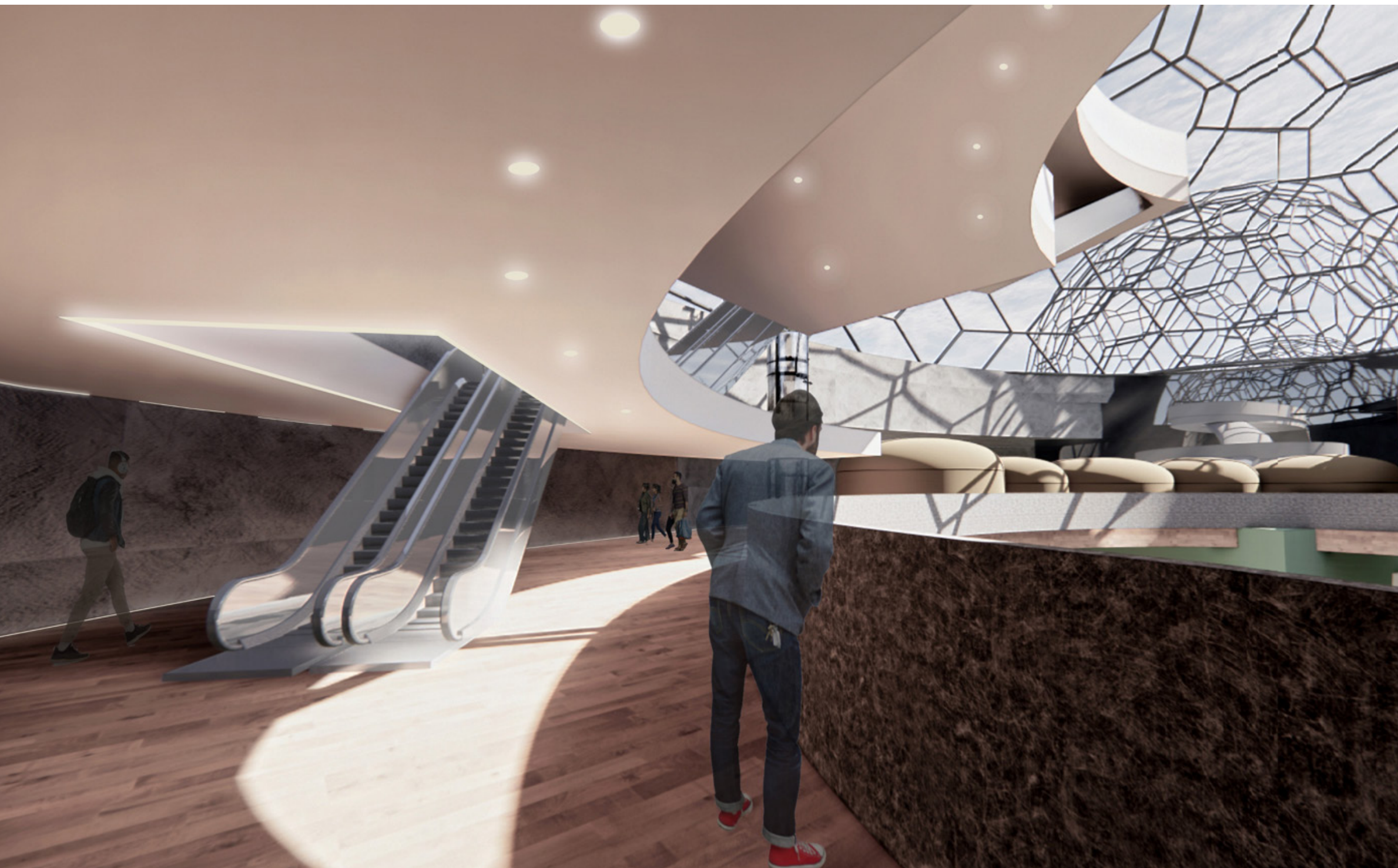
# BEETLES OCCUPANCY





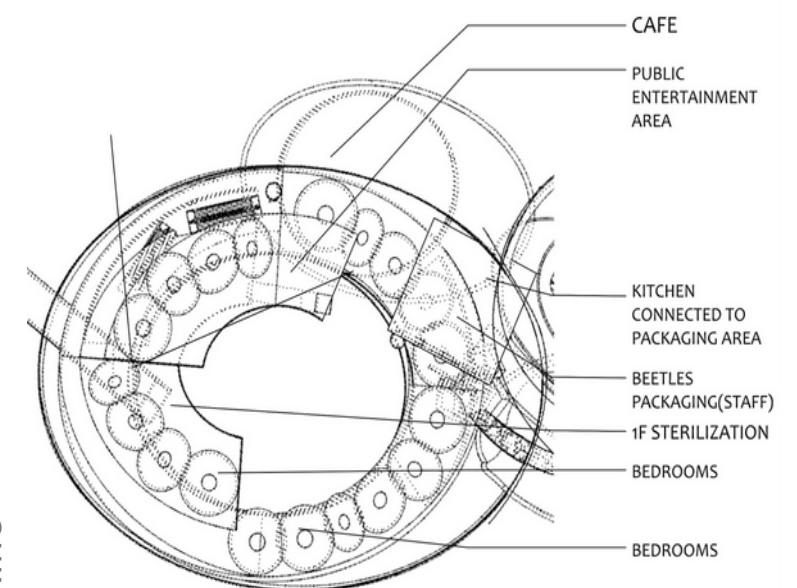
# HUMAN OCCUPANCY

In the human occupancy area, There are a lot of public space for activities of human.



HUMAN OCCUPANCY

RENDERING





## FANHAO SUN

THROUGHOUT MY FOUR YEAR STUDYING IN PRATT INSTITUTE, I'M INTRIGUED TO PURSUE POSSIBILITIES THROUGH SPACIAL/INTERIOR DESIGN. MY THOUGHT ALWAYS START WITH ANALYZING THE PROBLEM AND START ASKING TO MYSELF "WHAT CAN I DO". FINDING THE MOST APPROPRIATE SOLUTION IS MY CORE VALUE WHEN DESIGNING, AND PRACTISE THAT SOLUTION IN MY CREATIVE WAY. ALONGSIDE WITH DEEP UNDERSTANDING OF THE DESIGN PURPOSE, PRACTICALITY IS MY PRIORITY WHEN IT COMES TO DEEPER DEVELOPMENT. MY PAST EXPERIENCE WORKING IN KWG GROUP HOLDING GAVE ME ABANDENT KNOWLEGE OF MATERIAL, CONSTRUCTION RULES AND COMMUNICATION WITH CLIENT.

I BELEIVE EXPERIENCE IS THE TURE INSPIRATION, SO I TRAVEL A LOT. THE WORLD GIVES ME POWER TO DESIGN, AND I WISH TO DESIGN FOR THE WORLD.