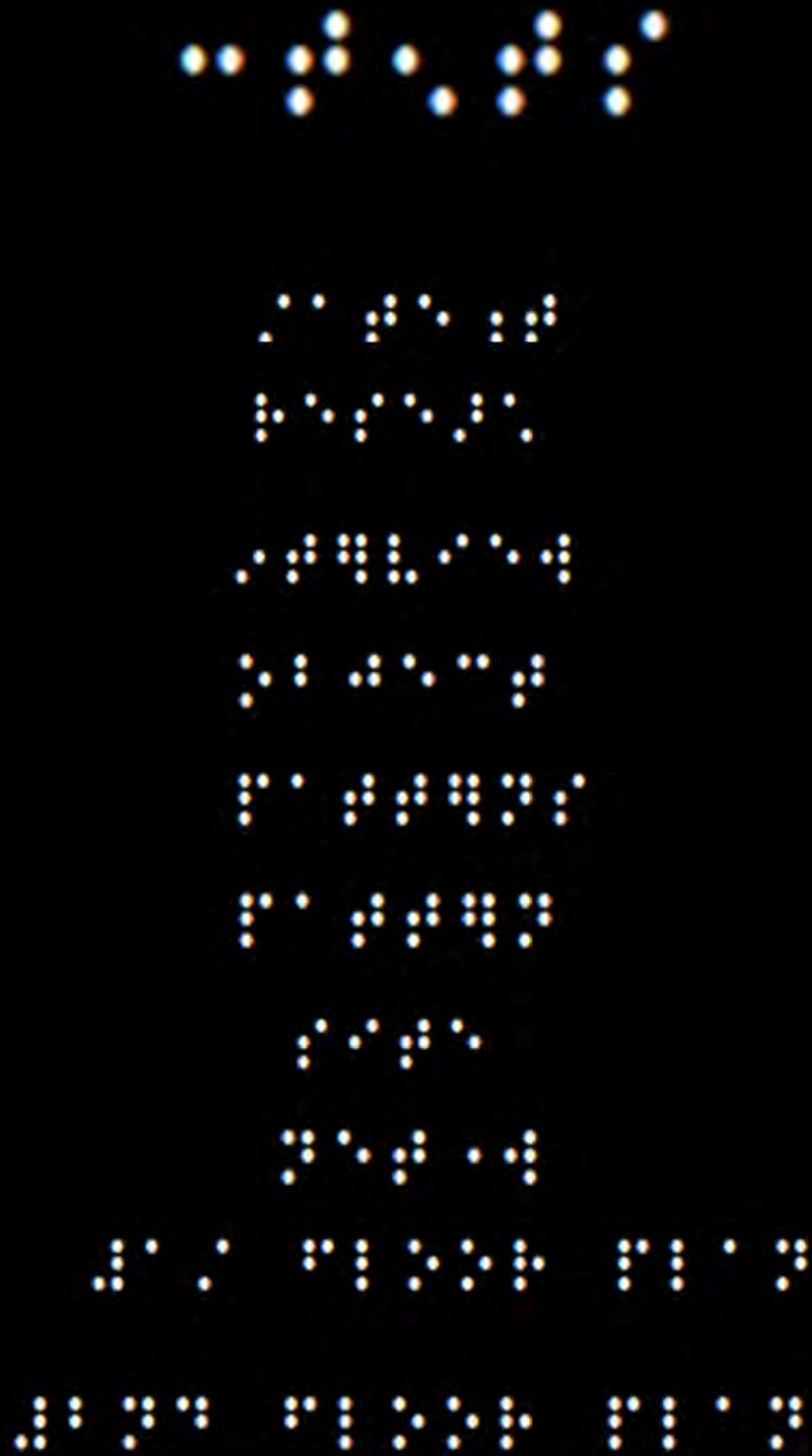


PATTERN DARKNESS

!?!?!?





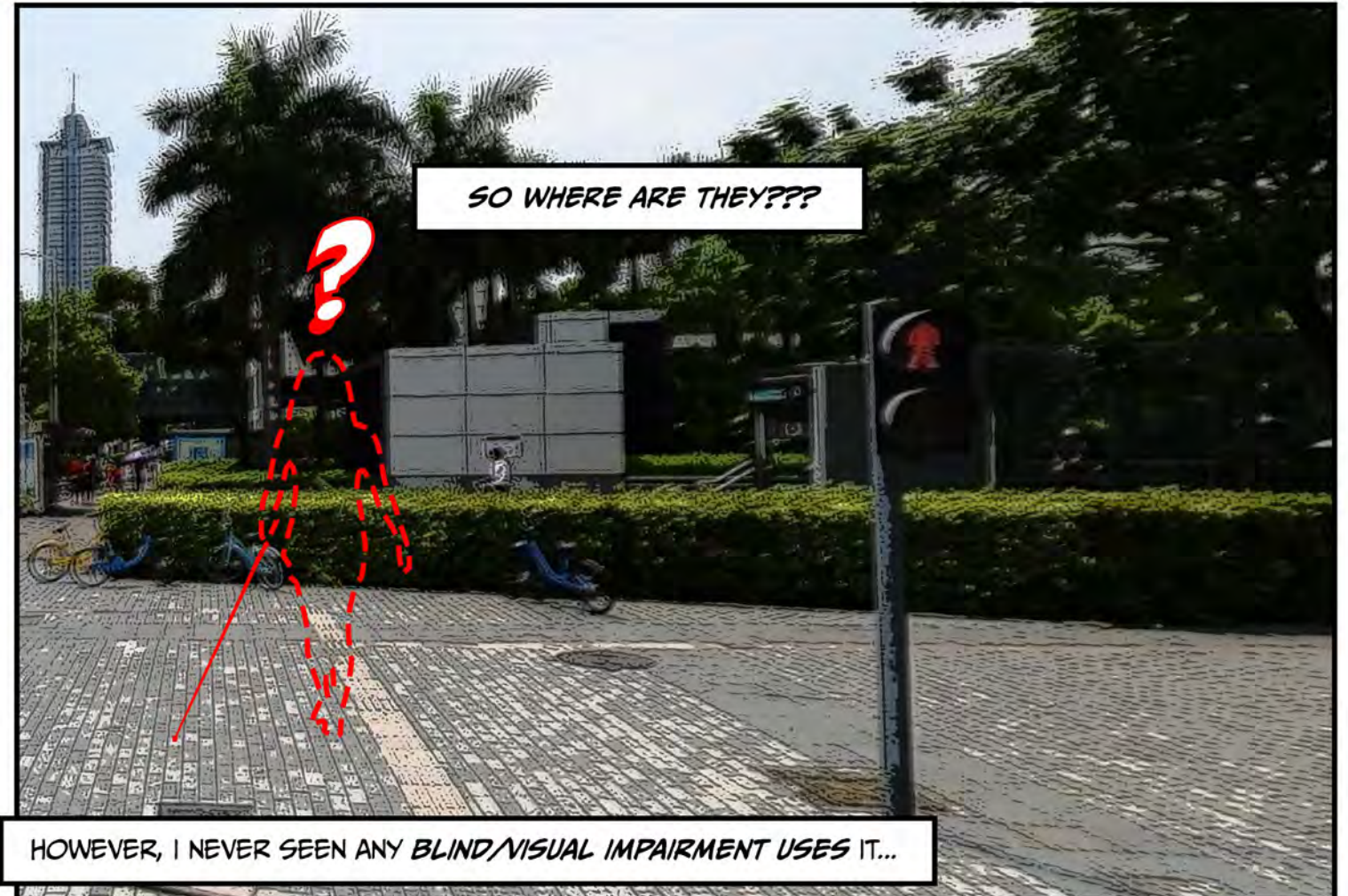
CONTENTS!!!

<i>PROBLEM!</i>	<i>----- 5</i>
<i>STATEMENT!</i>	<i>----- 7</i>
<i>RESEARCH!</i>	<i>----- 9</i>
<i>INTERVIEW!</i>	<i>----- 11</i>
<i>OBJECT!</i>	<i>----- 13</i>
<i>PATTERNS!</i>	<i>----- 15</i>
<i>SITE!</i>	<i>----- 17</i>
<i>NETWORK!</i>	<i>----- 19</i>
<i>1ST FLOOR!</i>	<i>----- 21</i>
<i>2ND FLOOR!</i>	<i>----- 33</i>

PROBLEM!



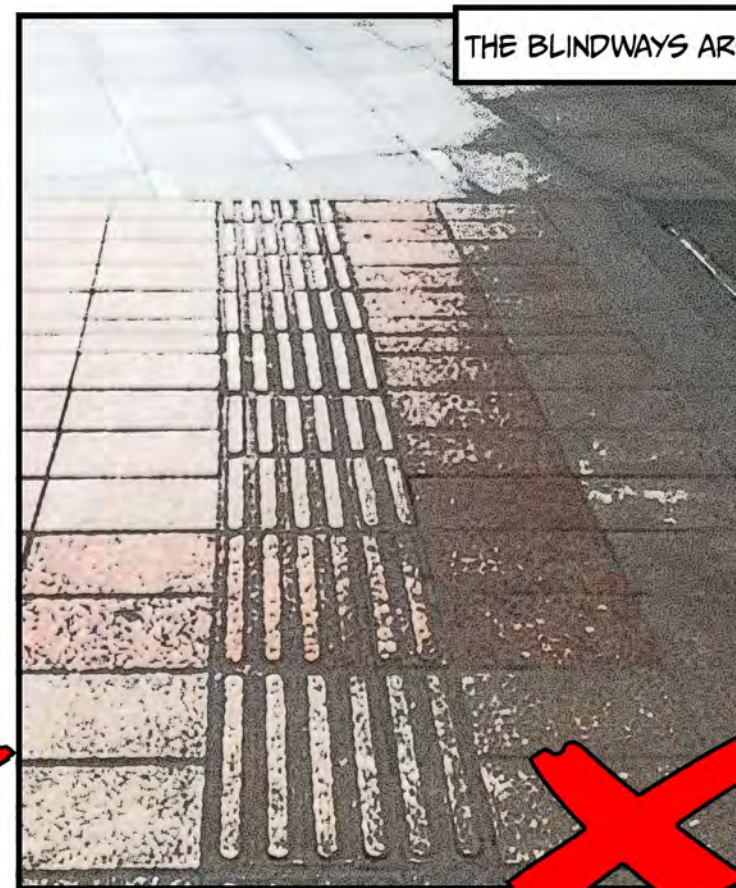
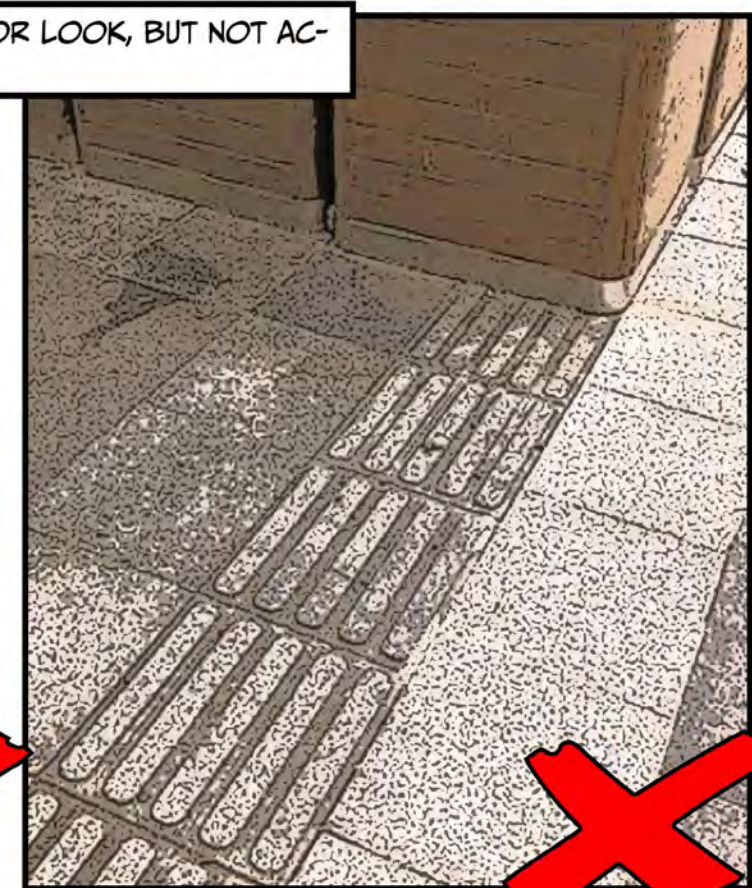
WHILE I WAS WALKING ON THE STREET, I SAW ALMOST EVERY STREET HAS THE **BLIND WAY**.....



SO WHERE ARE THEY???

HOWEVER, I NEVER SEEN ANY **BLIND/VISUAL IMPAIRMENT USES IT...**

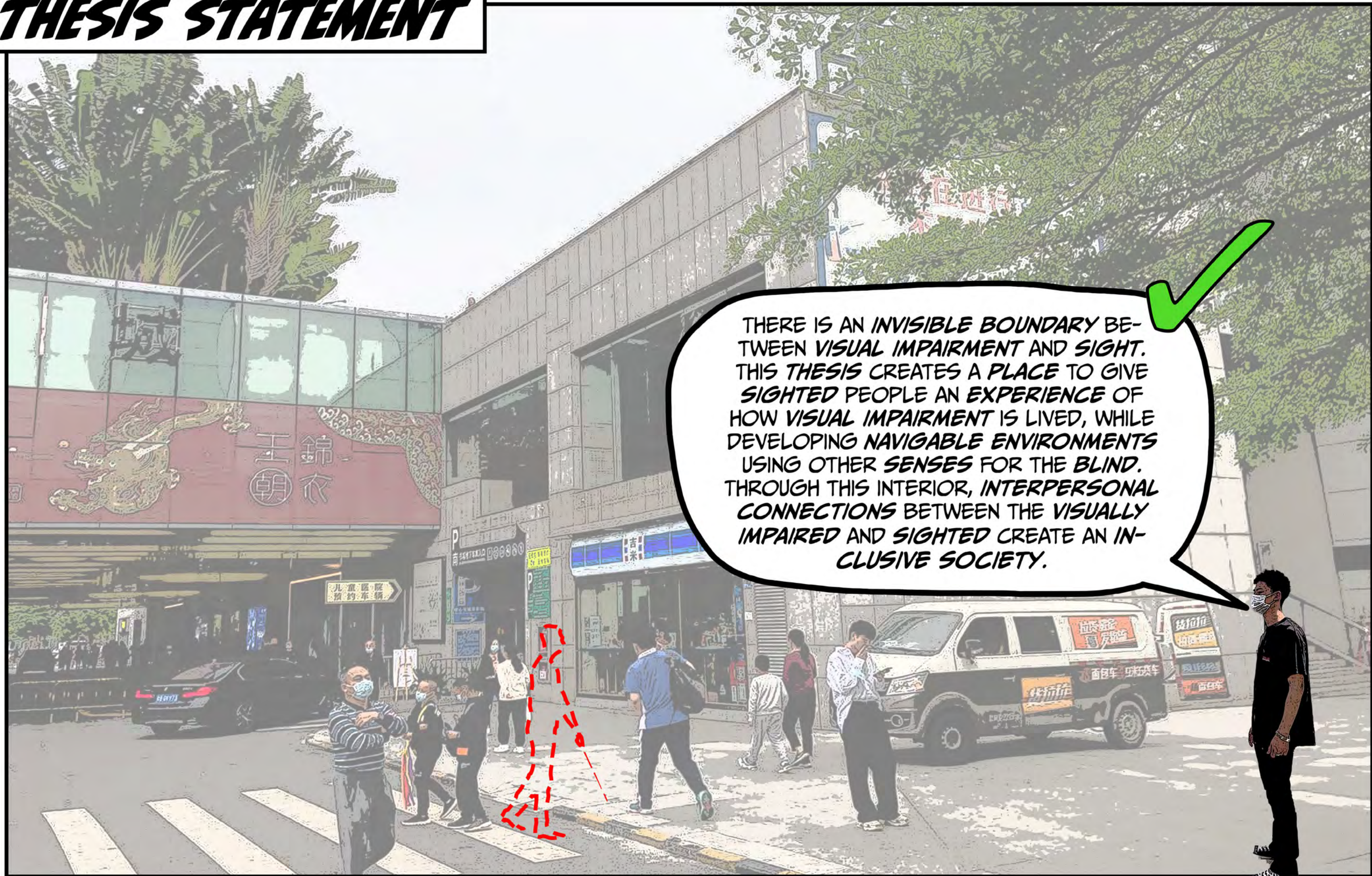
THEN I REALIZED MANY **BLINDWAYS** ARE JSUT FOR LOOK, BUT NOT ACTUALLY IS **HELPING THEM!!!!**



THE **BLINDWAYS** ARE EITHER **BROKEN** OR HAVE **OBSTACLES** ON THEM!!!



THESIS STATEMENT



THERE IS AN INVISIBLE BOUNDARY BETWEEN VISUAL IMPAIRMENT AND SIGHT. THIS THESIS CREATES A PLACE TO GIVE SIGHTED PEOPLE AN EXPERIENCE OF HOW VISUAL IMPAIRMENT IS LIVED, WHILE DEVELOPING NAVIGABLE ENVIRONMENTS USING OTHER SENSES FOR THE BLIND. THROUGH THIS INTERIOR, INTERPERSONAL CONNECTIONS BETWEEN THE VISUALLY IMPAIRED AND SIGHTED CREATE AN INCLUSIVE SOCIETY.

RESEARCH!



IN THE WORLD... THE POPULATION OF THE BLIND/VISUALLY IMPAIRMENT HAS BE 285 MILLION, OF WHOM 39 MILLION ARE BLIND.

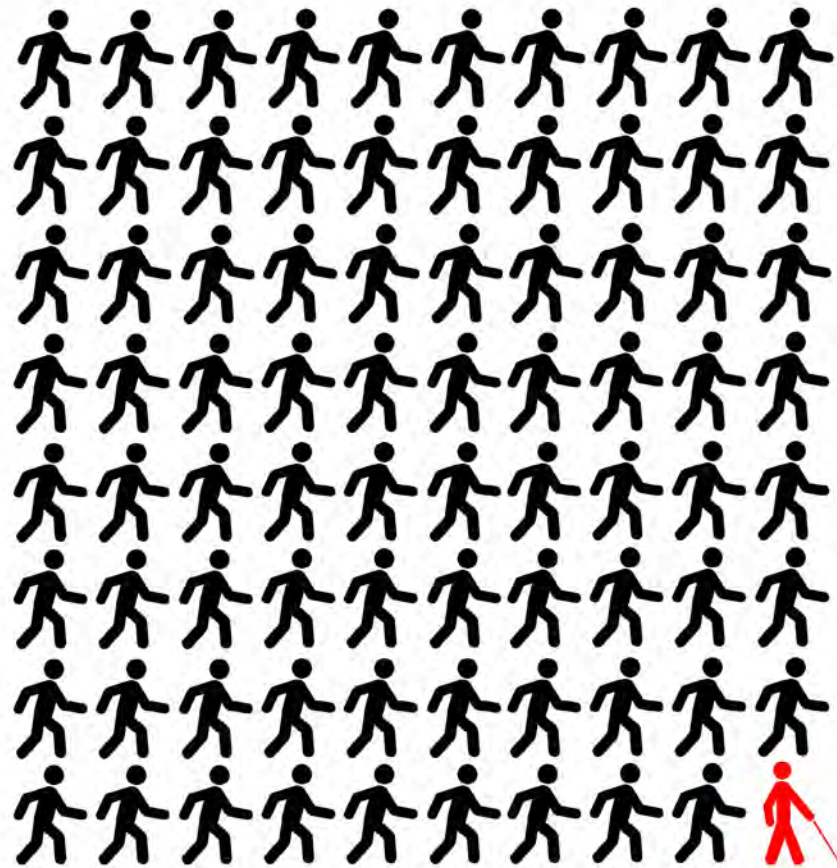
THERE ARE 17.31 MILLION PEOPLE WITH VISUAL IMPAIRMENT, BLIND IN CHINA.



THERE ARE AROUND 9 MILLION PEOPLE WITH VISUAL IMPAIRMENT, BLIND IN GUANGDONG.



THERE ARE AROUND 4.7 MILLION PEOPLE WITH VISUAL IMPAIRMENT, BLIND IN SHENZHEN.



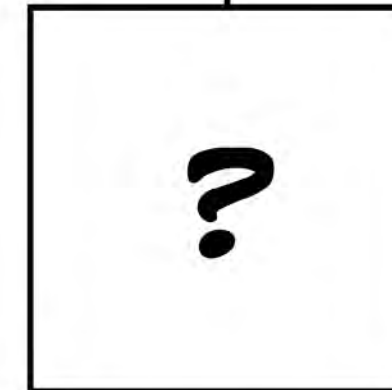
VISUAL IMPAIRMENT & BLIND



LOW VISION



TOTAL BLINDNESS



CONGENITAL BLINDNESS



LEGALLY BLIND

INTERVIEW!

OBVIOUSLY, THE PEOPLE LIVING IN LIKE US CAN'T SEE ... MANY JOBS THAT WE CAN'T DO BECAUSE OF LOSING THE VISUAL SENSE, THEREFORE IT IS VERY DIFFICULT FOR US TO FIND A JOB.

WELL ... I THINK AS FOR ME I DON'T HAVE ANY LIVING STRUGGLE FOR NOW. MOST OF THE PEOPLE THINK WE ARE HARDLY SURVIVING THAN THE SIGHTED PEOPLE, HOWEVER, IF WE GET USED TO IT. THERE ARE NOT MANY DIFFERENCES FOR US. WITH THE GROWTH OF THE TECHNOLOGY, WE CAN GO ONLINE MOST OF THE TIME AND TO SEARCH AND LEARN NEW THINGS.

THERE ARE NO COLORS FOR US EVEN THE BLACK COLOR, SINCE I'M BORN WITH BLIND THEREFORE I NEVER SEE OR KNOW ANY COLORS. THE MOST SCARY THING THAT IS SCARY IS NOT LIVING AS A BLIND ... EMMM THE MOST SCARY PART FOR ME IS WHEN I WAS YOUNG I FELT I AM NOT LIKE OTHERS. I FEEL SHY AND TIMID TO OTHERS. I FELT THE HARDEST PART IS HOW WE CONNECT TO SOCIETY OTHERWISE IT FEELS VERY DEPRESSING BECAUSE I FEEL SO ALONE. ALSO IT IS SO HAPPY FOR ME THAT I KNOW OTHER BLIND PEOPLE WHO JUST LIKE ME WE CAN COMMUNICATE SUCH AS MY FRIENDS SITTING BESIDE.

IS IT THE WORLD THAT YOU SEE IS ALL BLACK? IS IT LIVING IN THE ALL BLACK WORLD MAKES YOU FEEL SCARED?

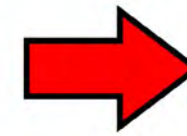
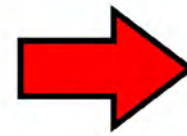
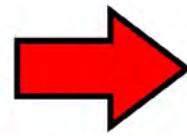
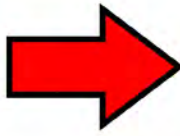
WHAT DO YOU THINK ARE THE DIFFERENCES BETWEEN THE PEOPLE LIVING IN THE BLIND WORLD AND THE SIGHTED WORLD?

EMMM WHAT DO YOU THINK IS THE MOST STRUGGLING POINT LIVING AS A BLIND OR VISUAL IMPAIRMENT?

WHAT I REALIZED THE PROBLEMS ARE THEY LACKING COMMUNICATION TO THE SOCIETY, HARD TO APPLY A JOB, TRAFFIC PROBLEMS, AND SIGHTED DO NOT UNDERSTAND THEIR LIFE.....

THEREFORE, WHY SHOULDN'T I CREATE A SPACE FOR THE SIGHTED AND BLIND/VISUAL IMPAIRMENT TO INTERACT, TO INCREASE A BETTER CONNECTION????

OBJECT!



"SOUND EXPAND"

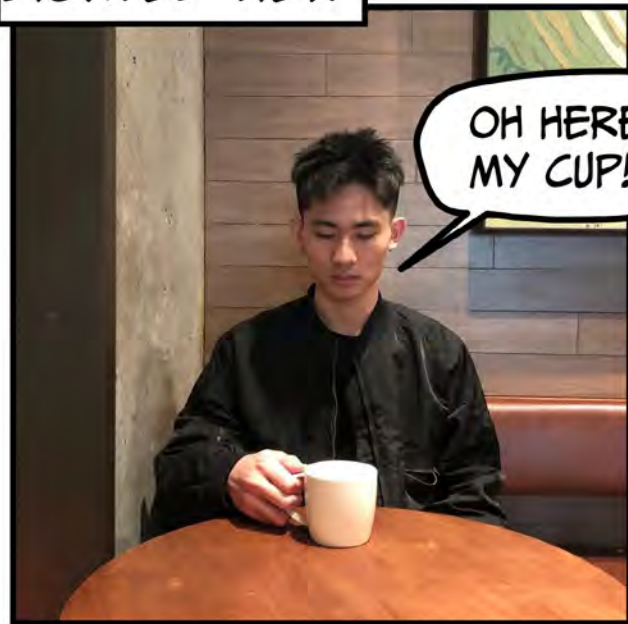
"SOUND ECHO"

"SOUND FOCUS"

"VISION OUT"

"NO VISION, BETTER SOUND"

SIGHTED VIEW

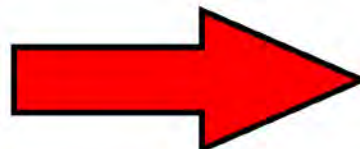
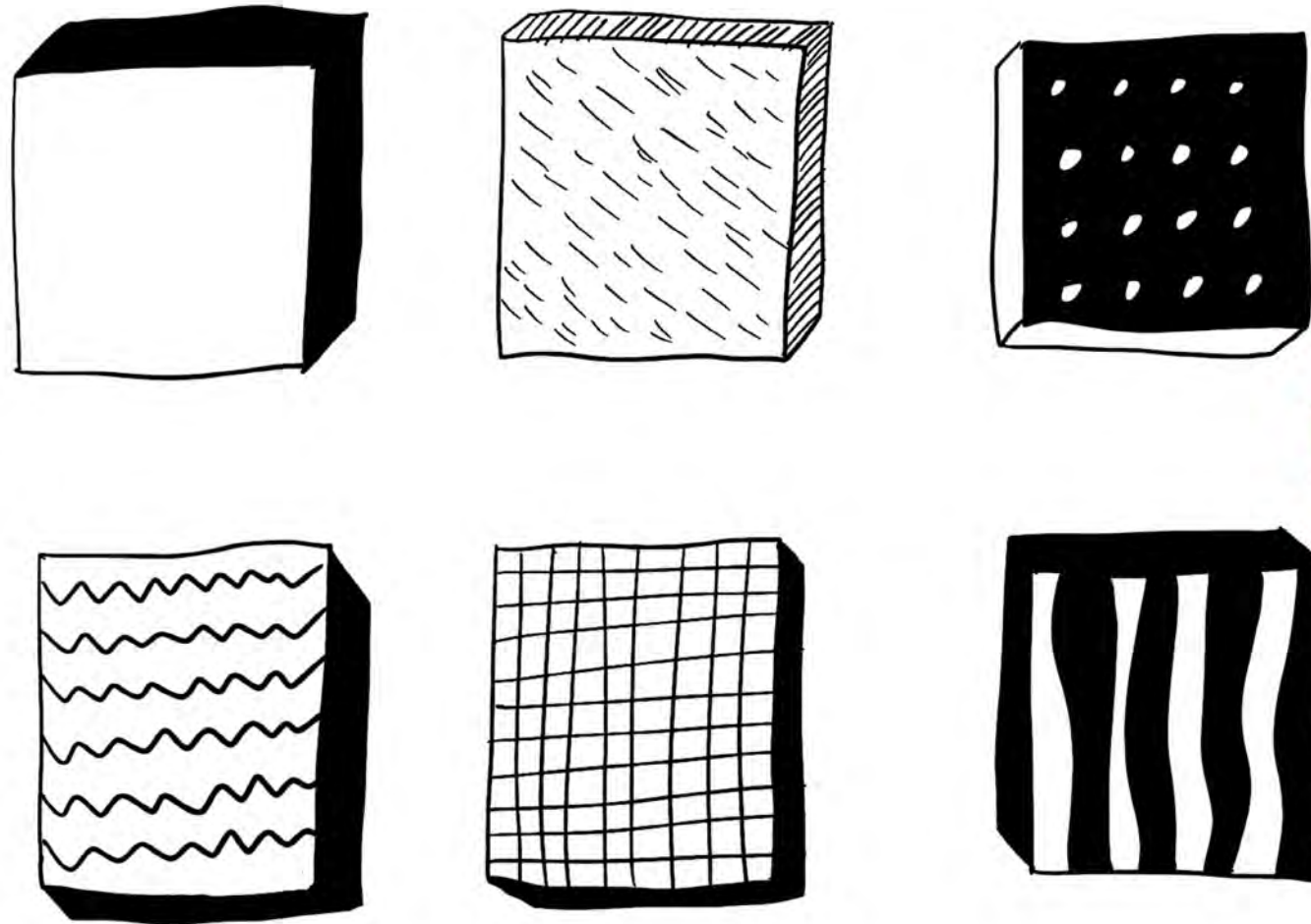


OBJECT IN USE VIEW

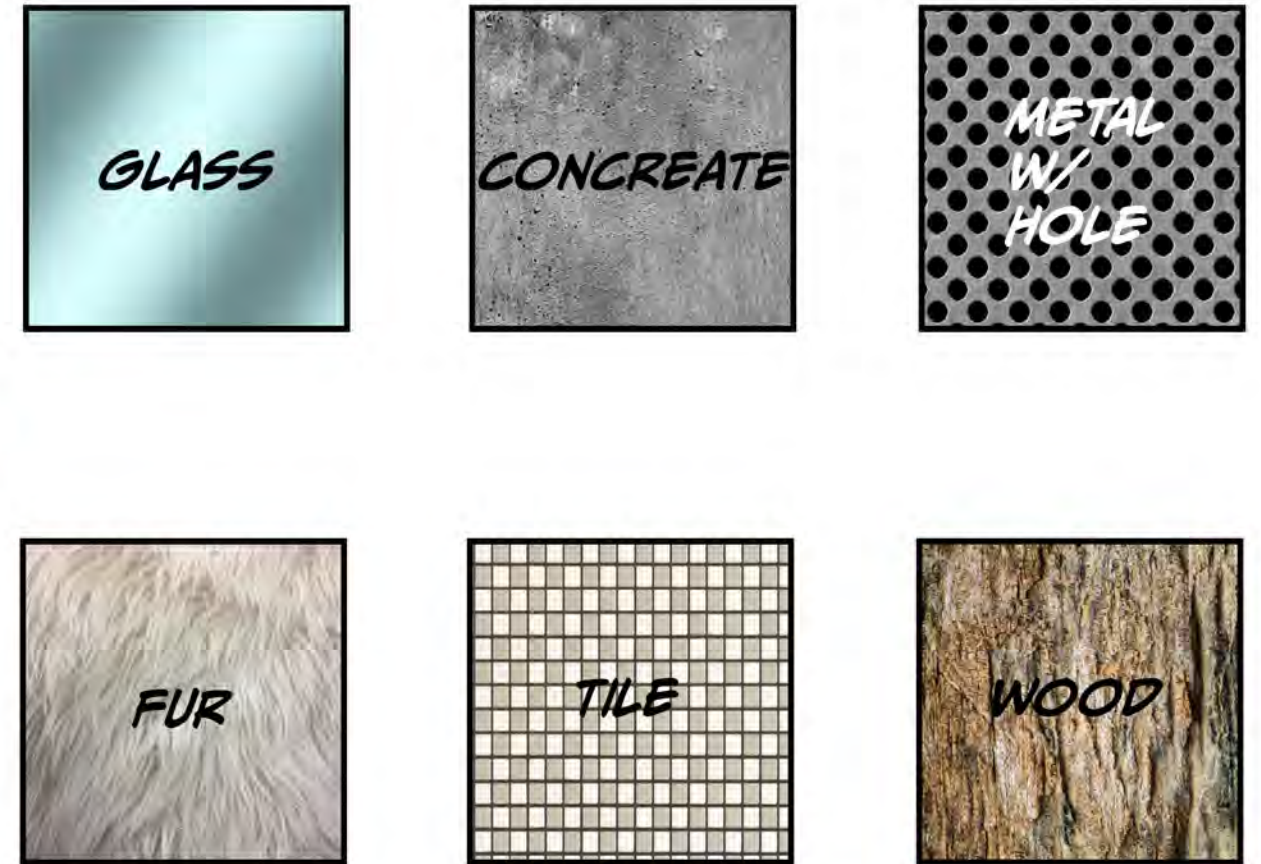


PATTERNS FROM OBJECT!

PATTERNS FROM TOUCHING THAT STANDS OUT TO ME WHILE USING THE OBJECT!

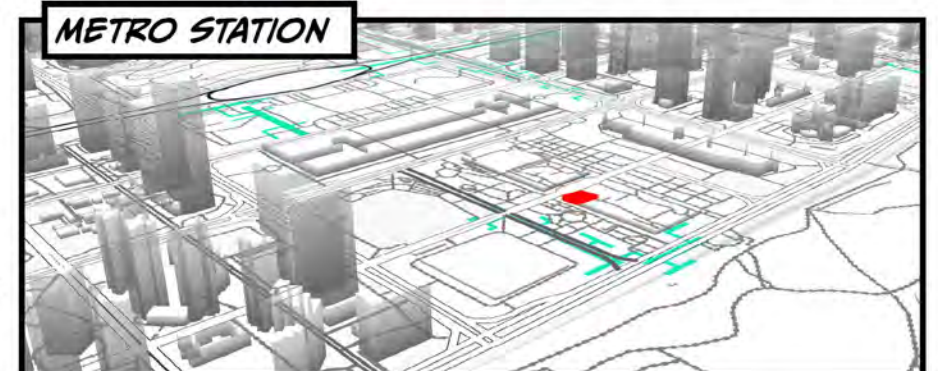
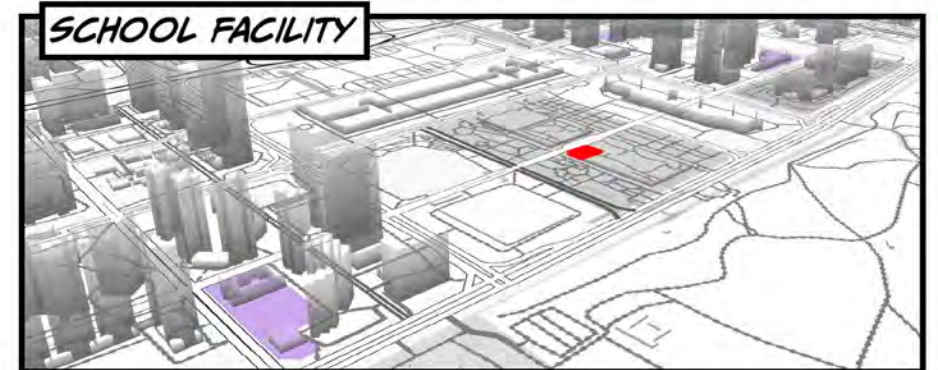
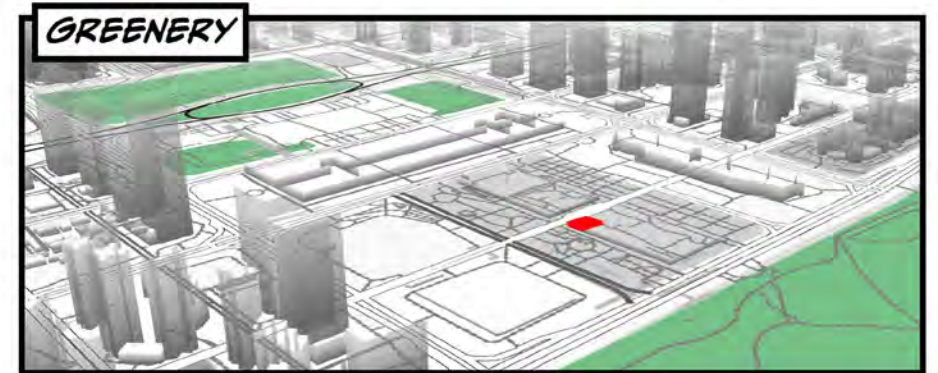
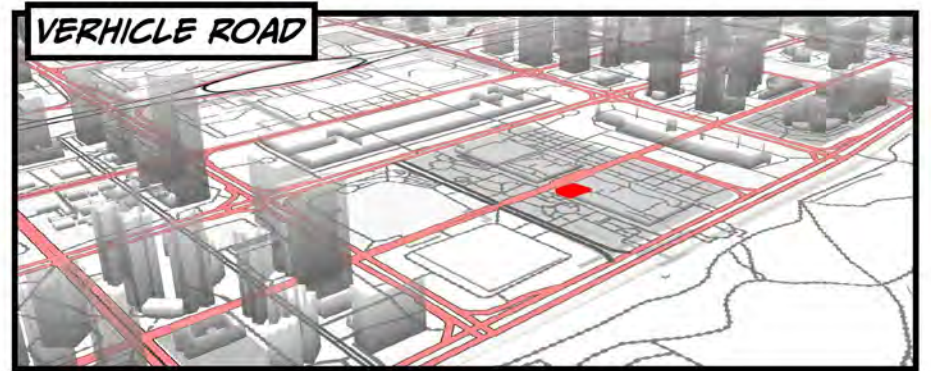
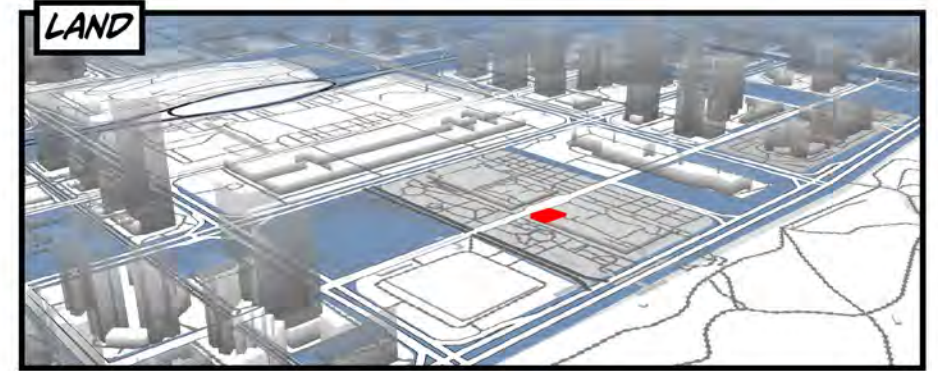
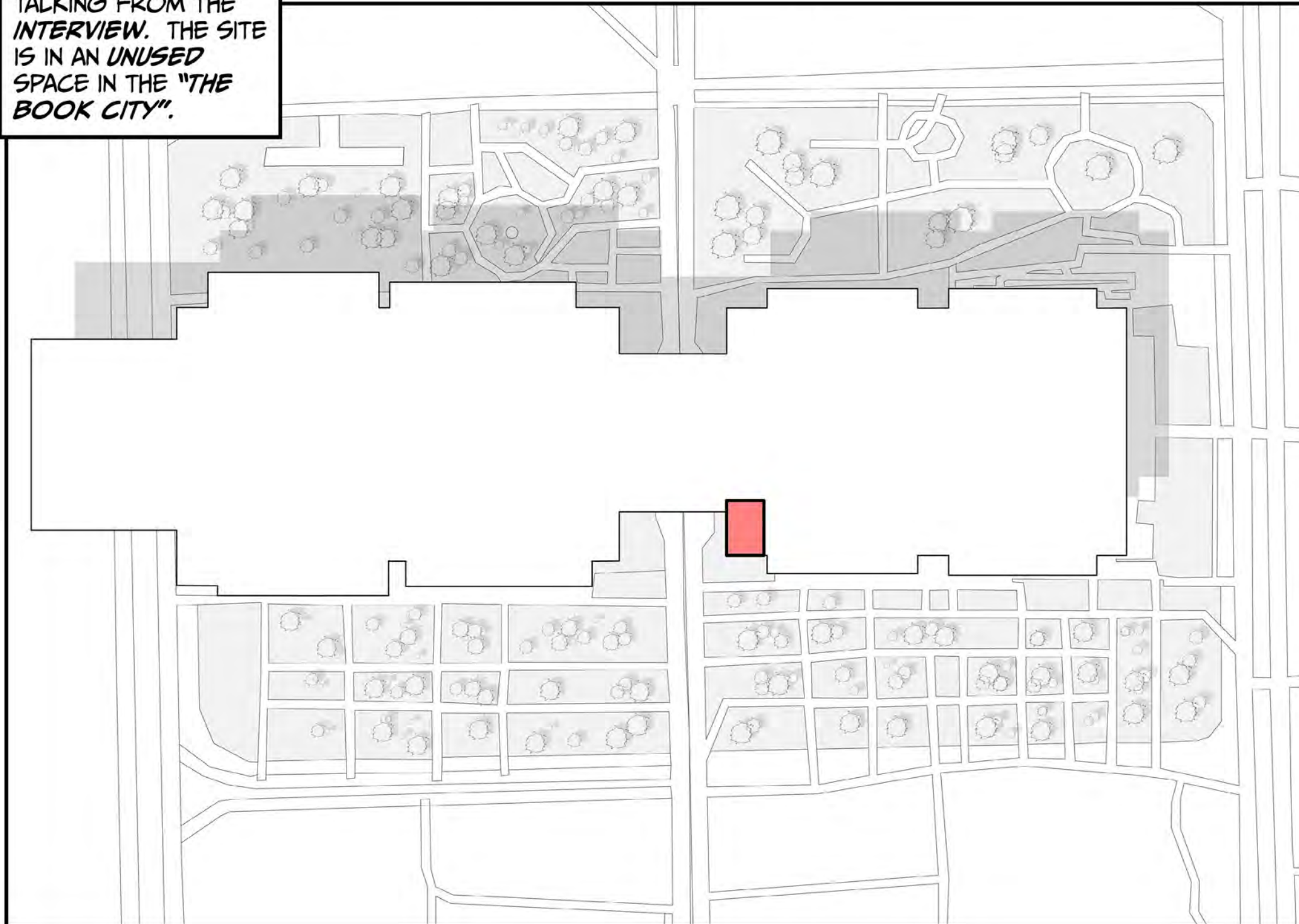


TRANSFER INTO MATERIALS!!



SITE

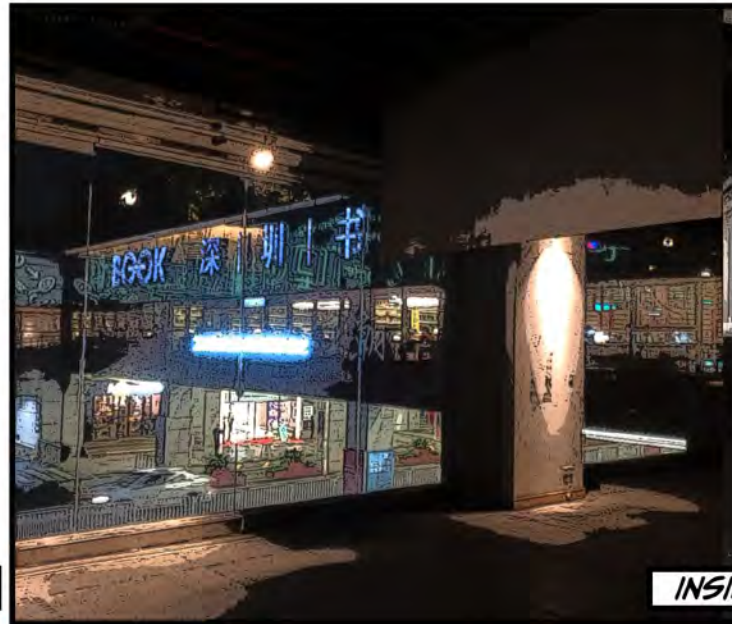
THE REASON I CHOOSED THIS SITE BECAUSE ALREADY HAVE THE *BLIND/VISUAL IMPAIRMENT INVOLVED*, ACCORDING TO THE *VISIT* AND TALKING FROM THE *INTERVIEW*. THE SITE IS IN AN *UNUSED SPACE* IN THE "*THE BOOK CITY*".



SITE-PHOTO!



OUTSIDE VIEW



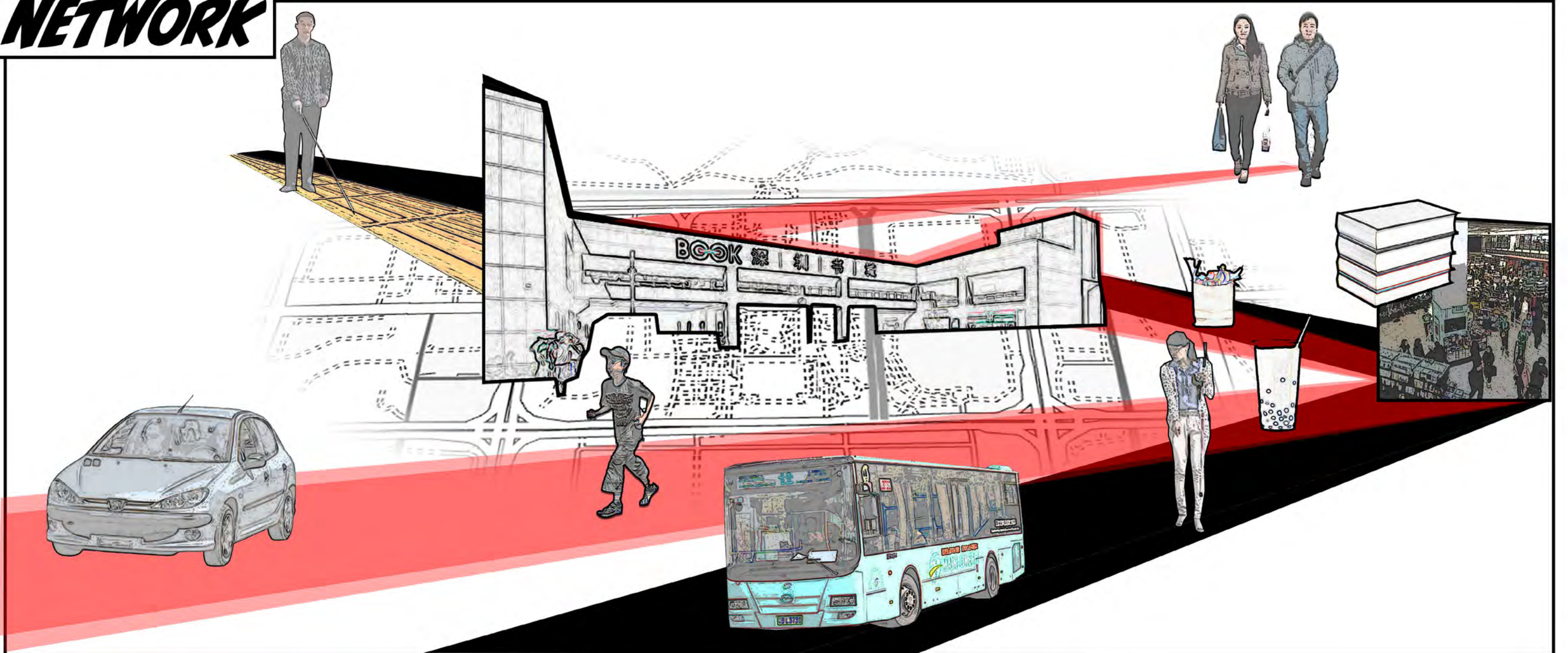
INSIDE VIEW



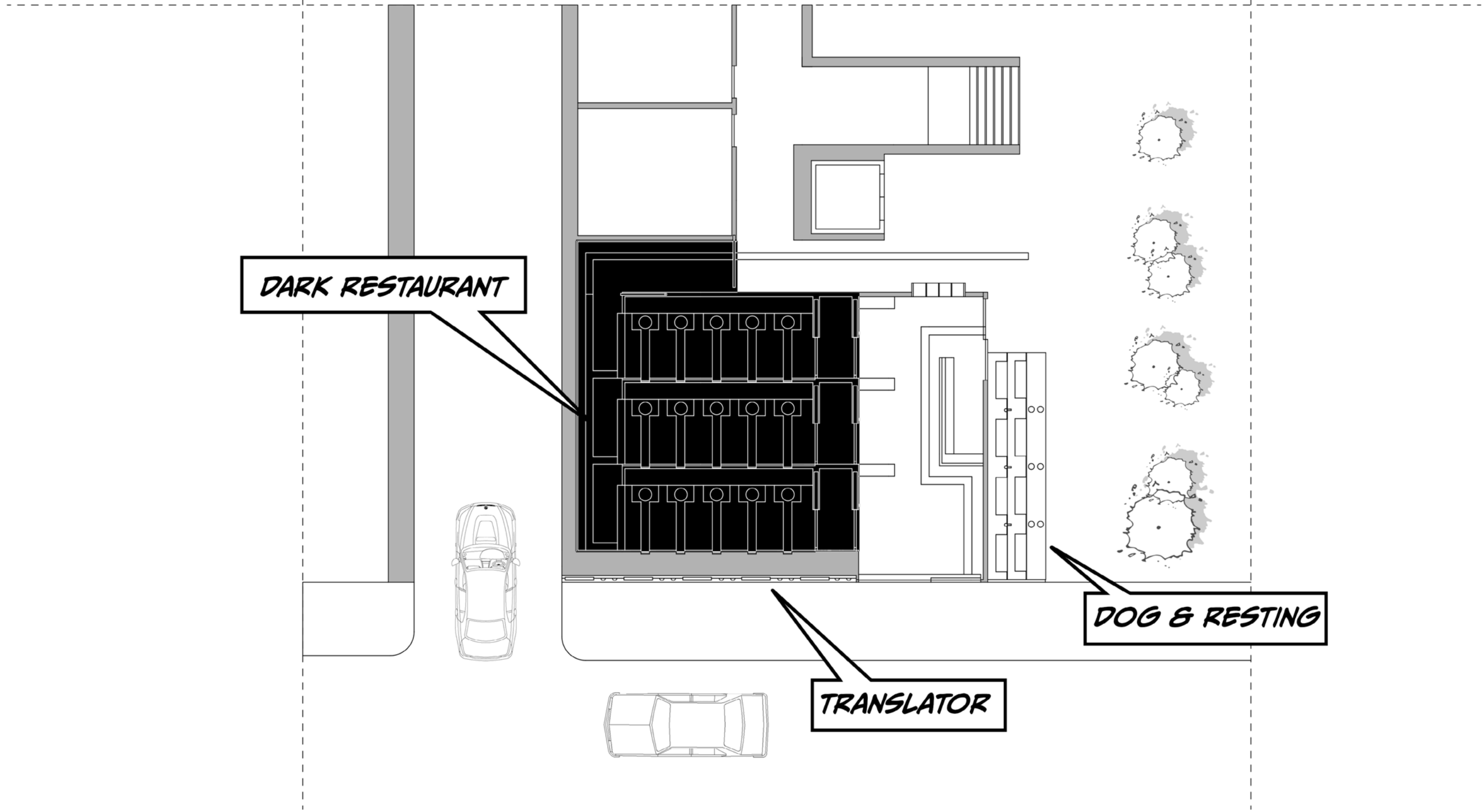
INSIDE VIEW



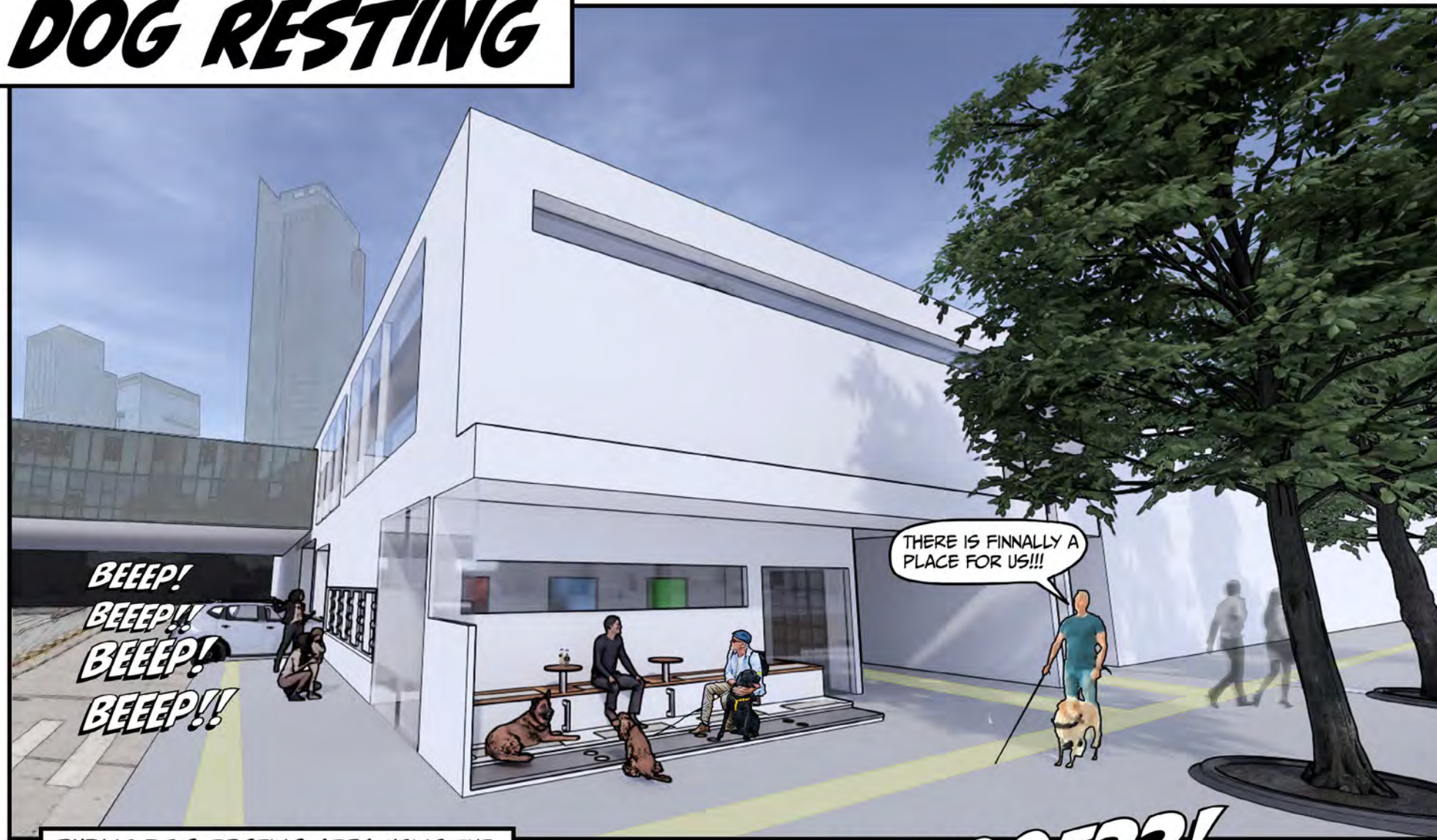
NETWORK



1ST FLOOR PLAN



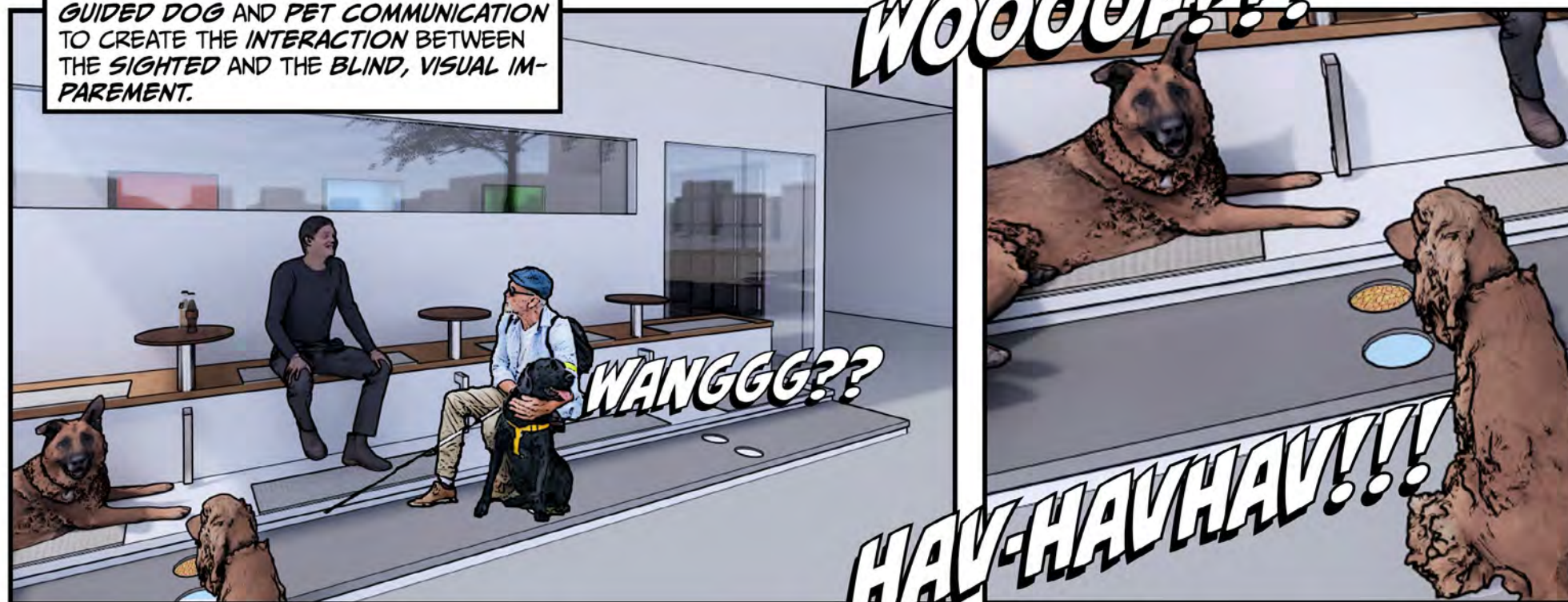
DOG RESTING



THERE IS FINNALLY A PLACE FOR US!!!

BEEP!
BEEP!
BEEP!
BEEP!!

PUBLIC DOG RESTING AREA. USING THE GUIDED DOG AND PET COMMUNICATION TO CREATE THE INTERACTION BETWEEN THE SIGHTED AND THE BLIND, VISUAL IMPAREMENT.



WANGGG??

WOOOOF???

HAV-HAVHAV!!!



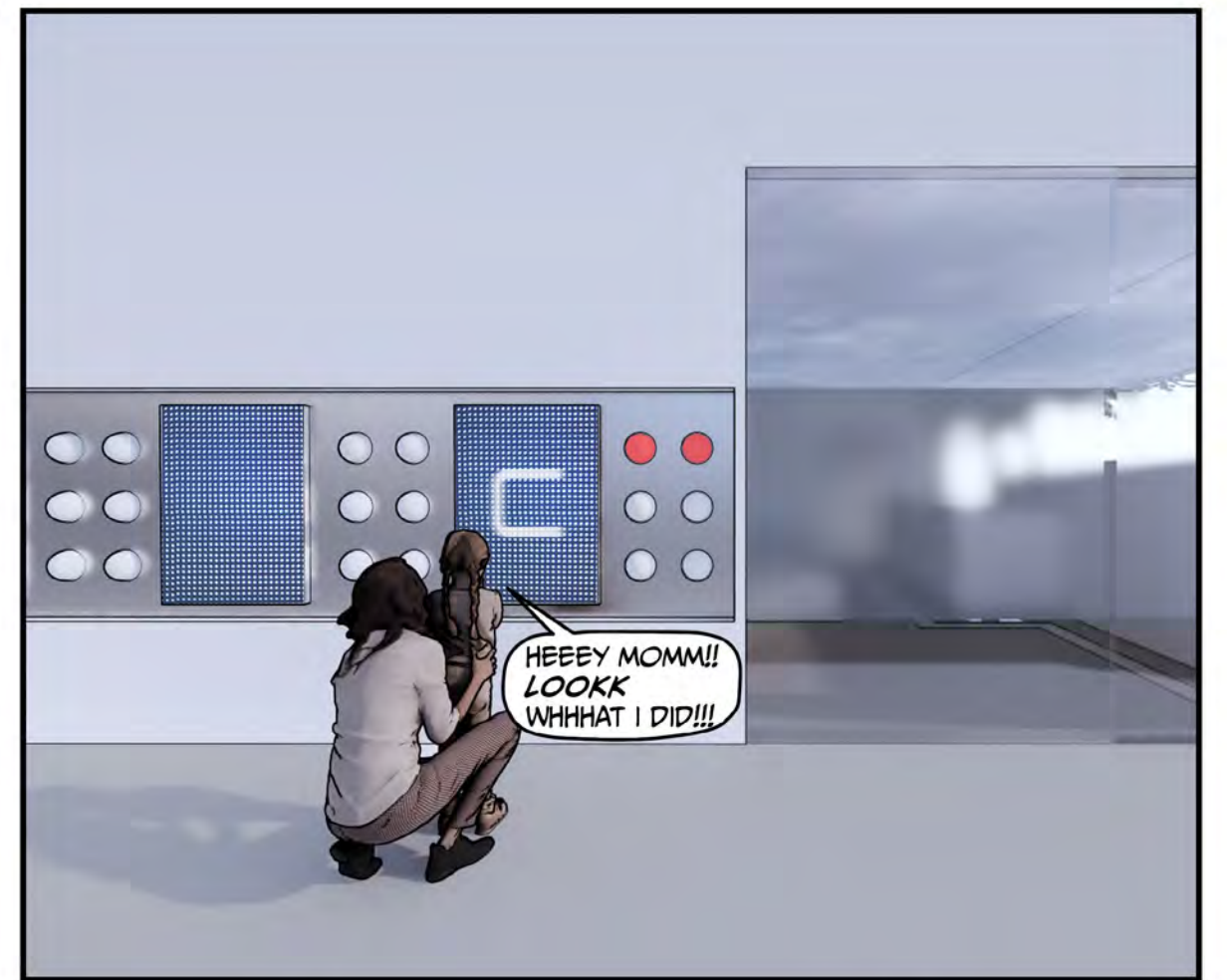
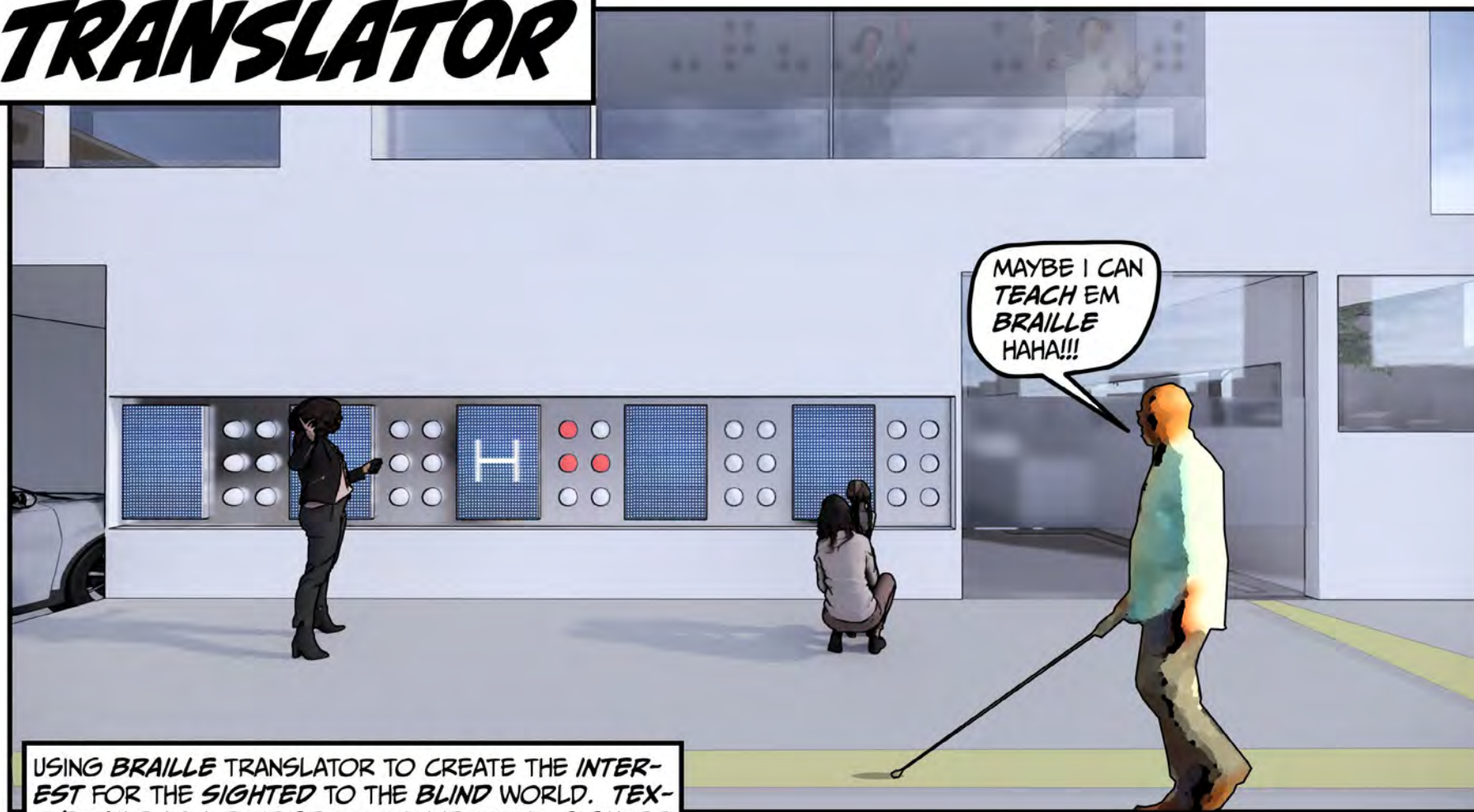
HI!! HOW ARE U DOING??

WHAT'S HER NAMME??

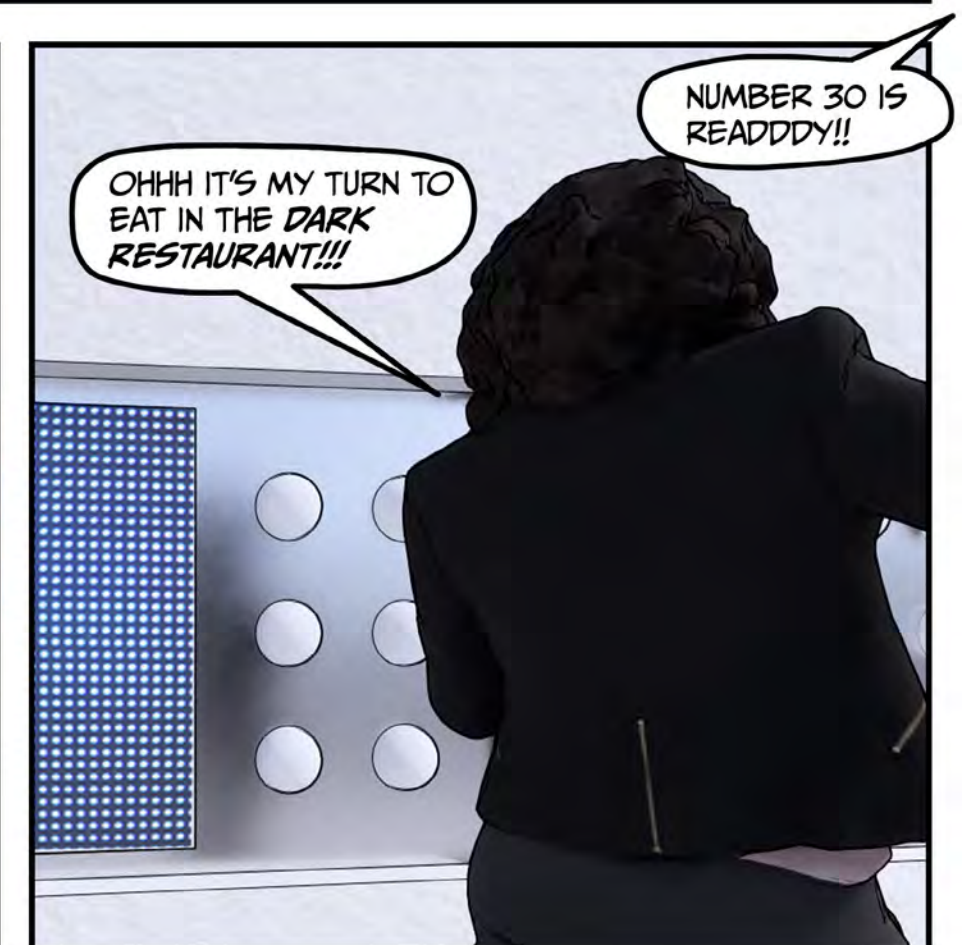
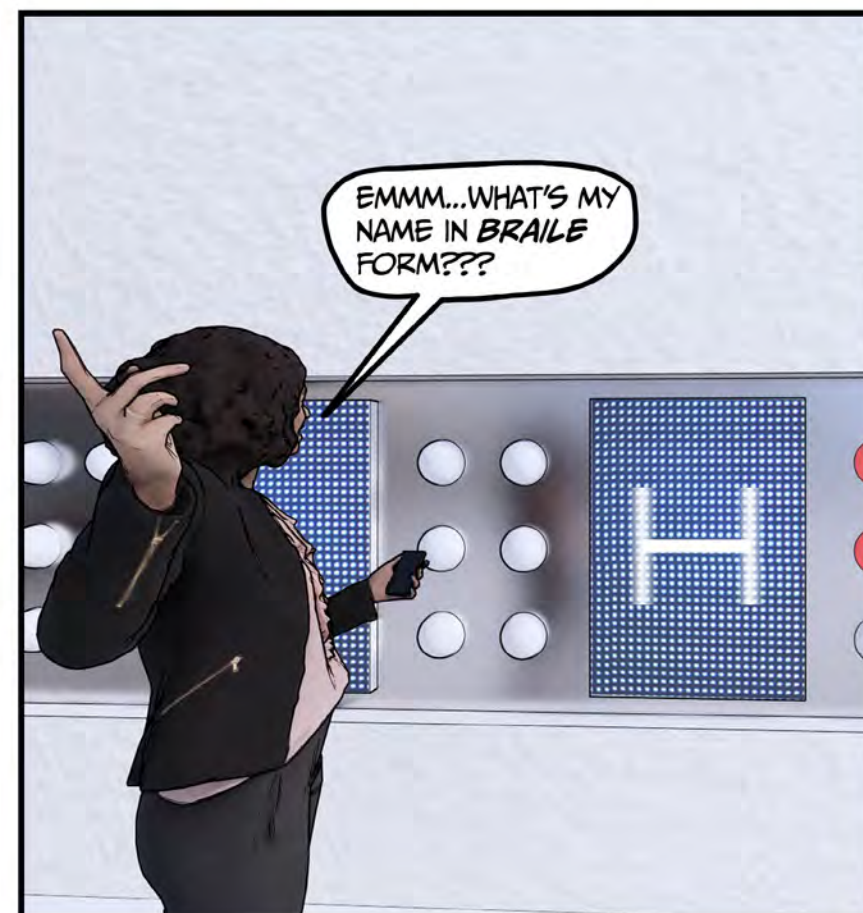
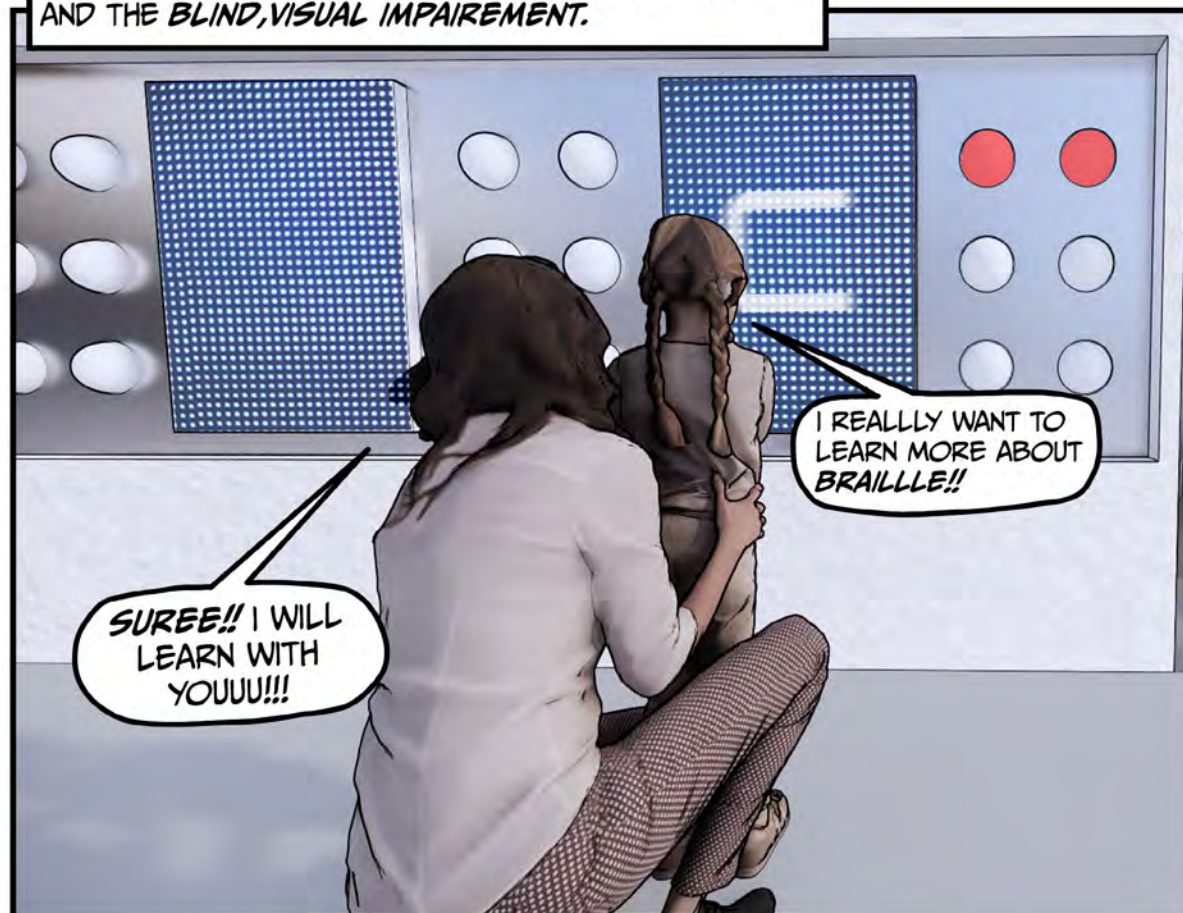
HER NAME IS LUCCCY!!!

HEY!! HOW ARE YOU??

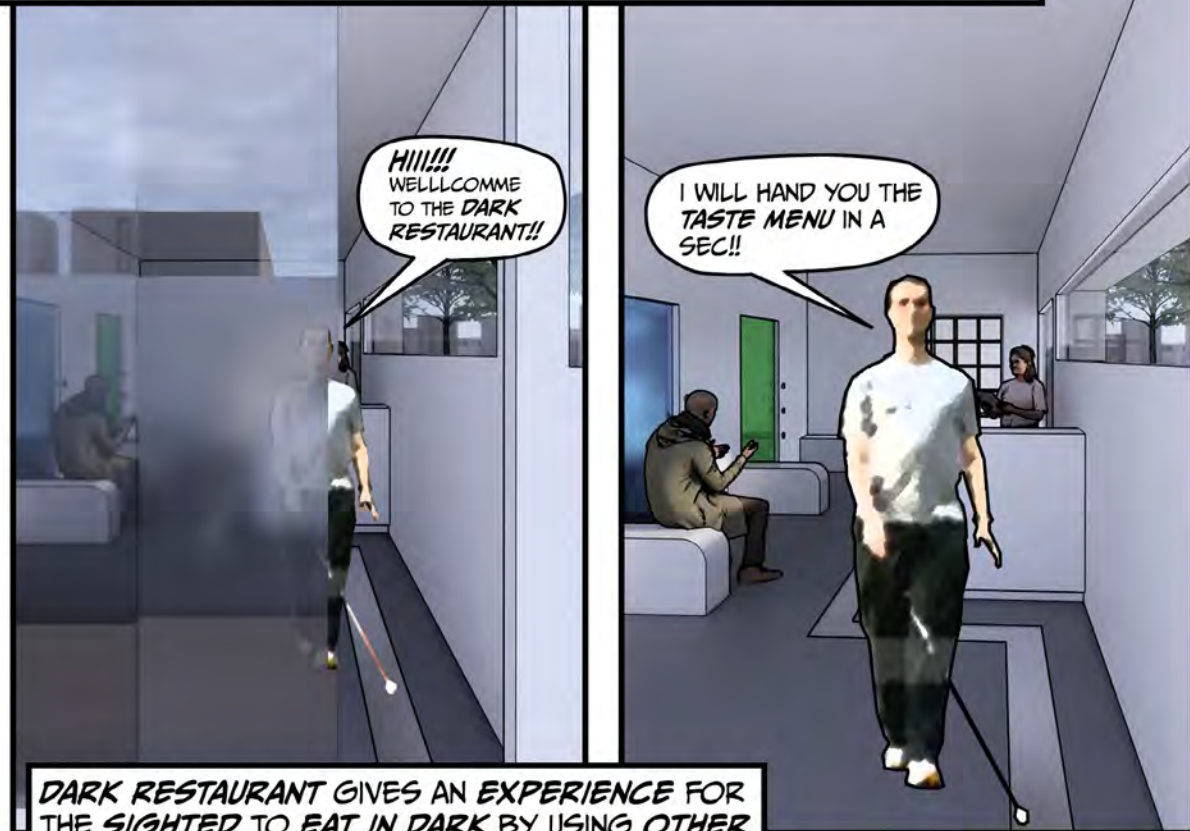
TRANSLATOR



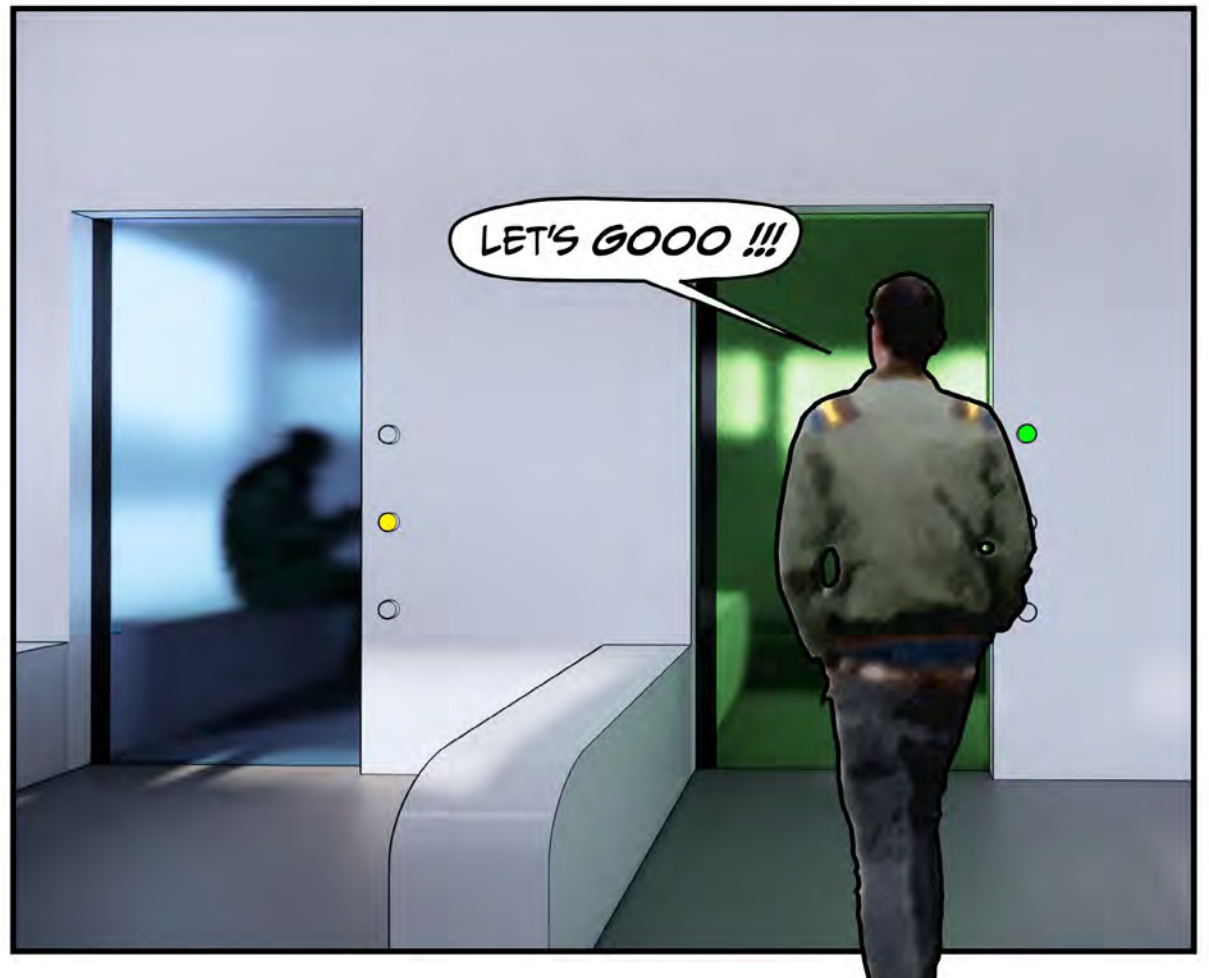
USING BRAILLE TRANSLATOR TO CREATE THE INTEREST FOR THE SIGHTED TO THE BLIND WORLD. TEXT/BRAILLE AS A BRIDGE TO CONNECT THE SIGHTED AND THE BLIND, VISUAL IMPAIRMENT.

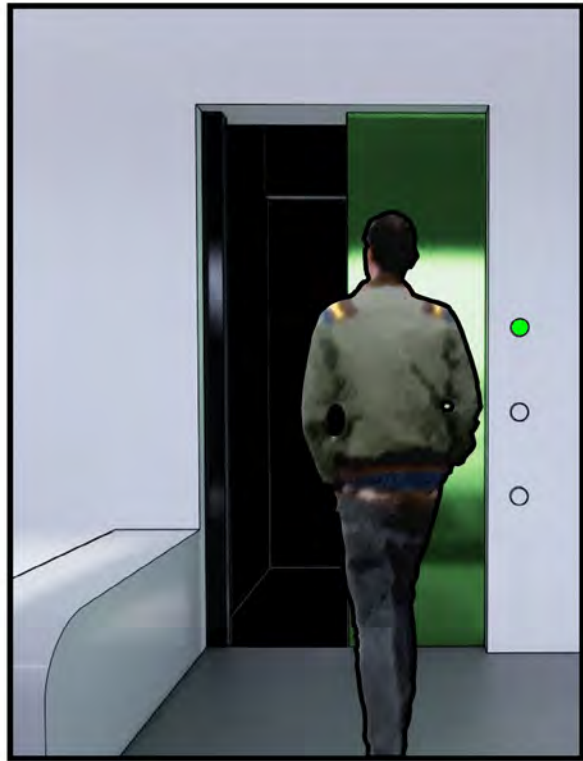


DARK RESTAURANT



DARK RESTAURANT GIVES AN EXPERIENCE FOR THE SIGHTED TO EAT IN DARK BY USING OTHER SENSES BESIDE SIGHT, TO UNDERSTAND HOW BLIND FEELS LIKE. THE SIGHTED CUSTOMERS WILL CHOOSE THEIR FAVOURITE TASTE AND FIND BY TOUCHING THE RIGHT PATTERN TO THEIR TABLES. THE BLIND WILL WORK AS SERVER AND FOLLOW THEIR OWN NAVIGATION PATH.

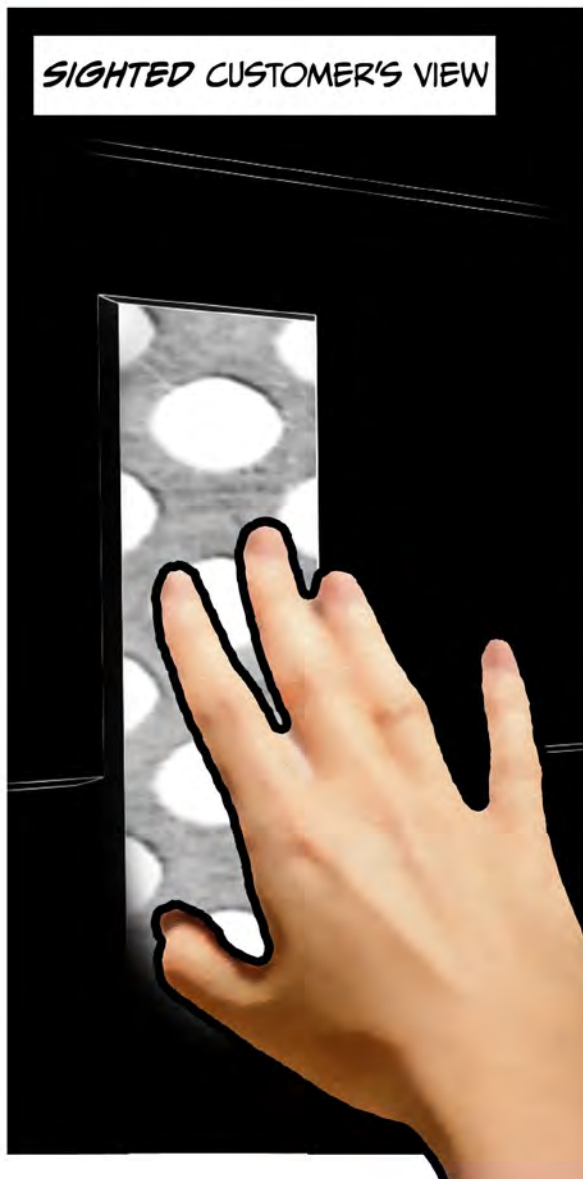




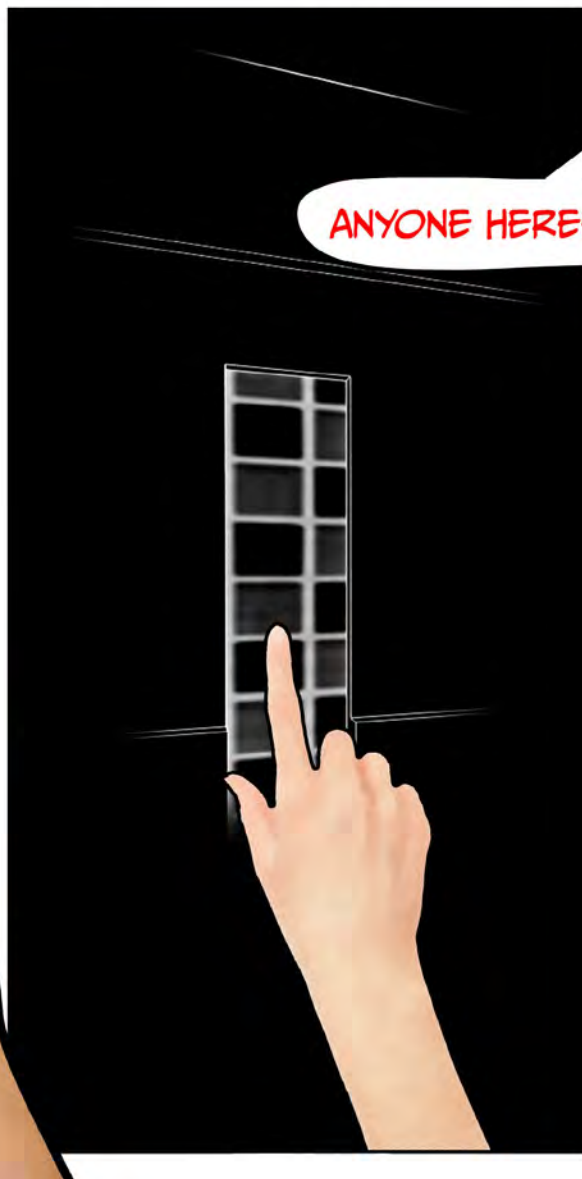
HOPE I CAN FIND THE RIGHT *PATTERN* TO MY TABLE!!!



I CAN'T *SEE* ANYTHING NOW !!



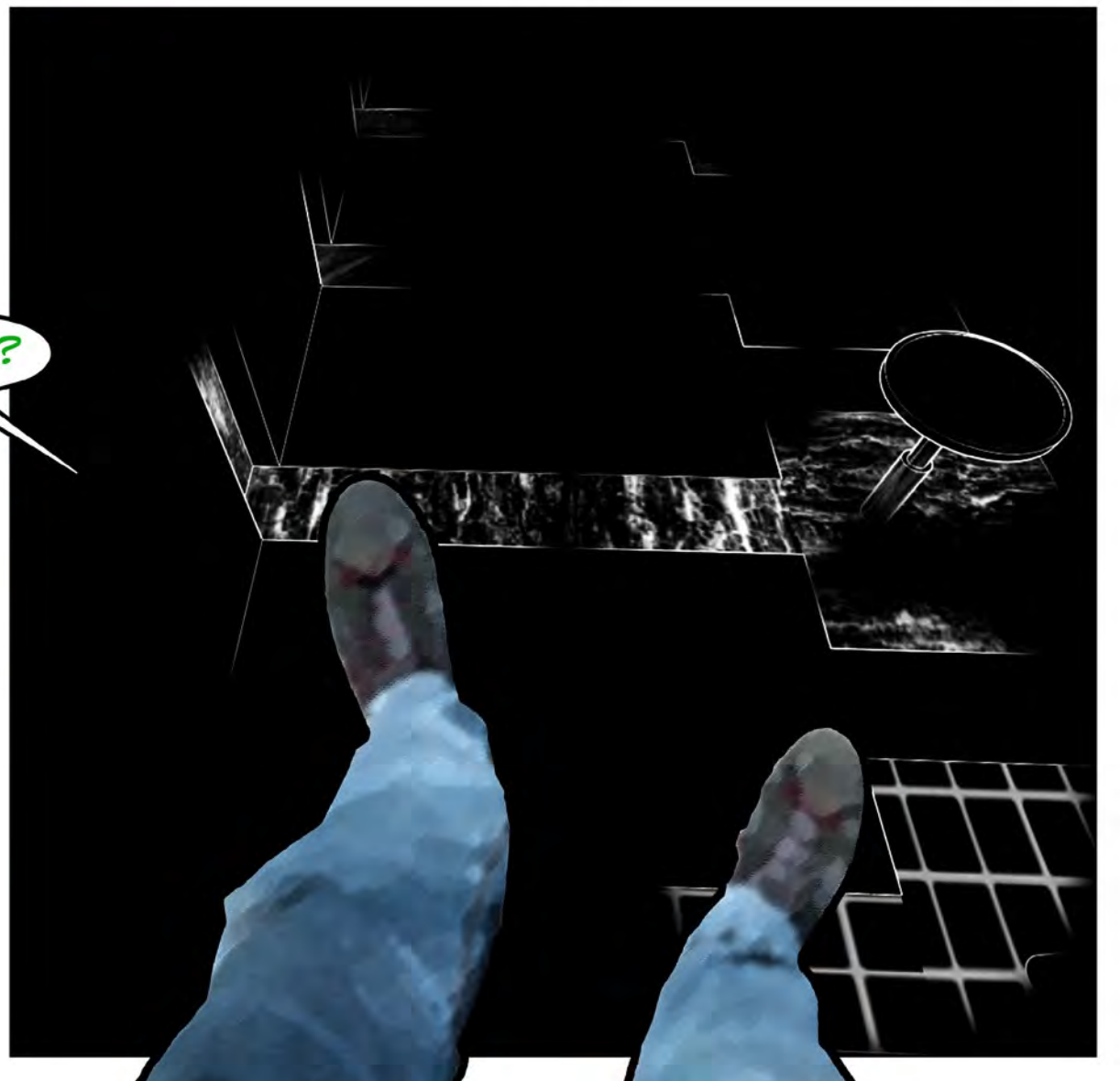
SIGHTED CUSTOMER'S VIEW

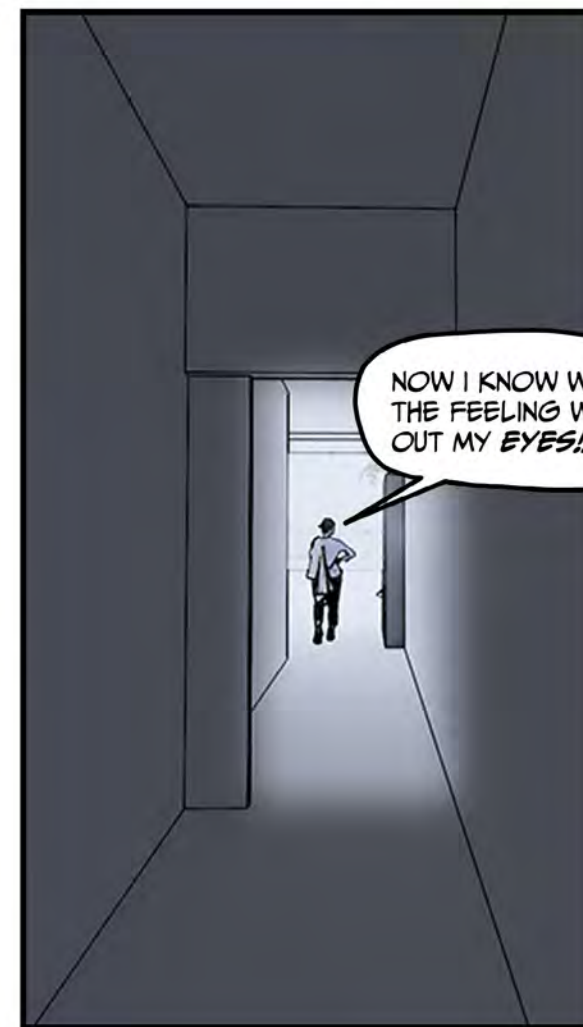
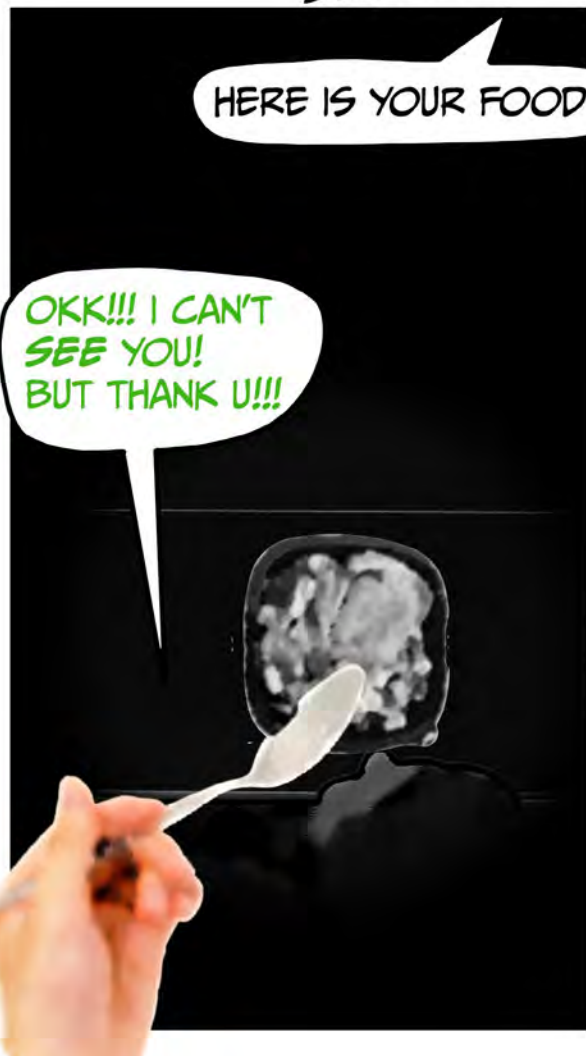


ANYONE HEREE??

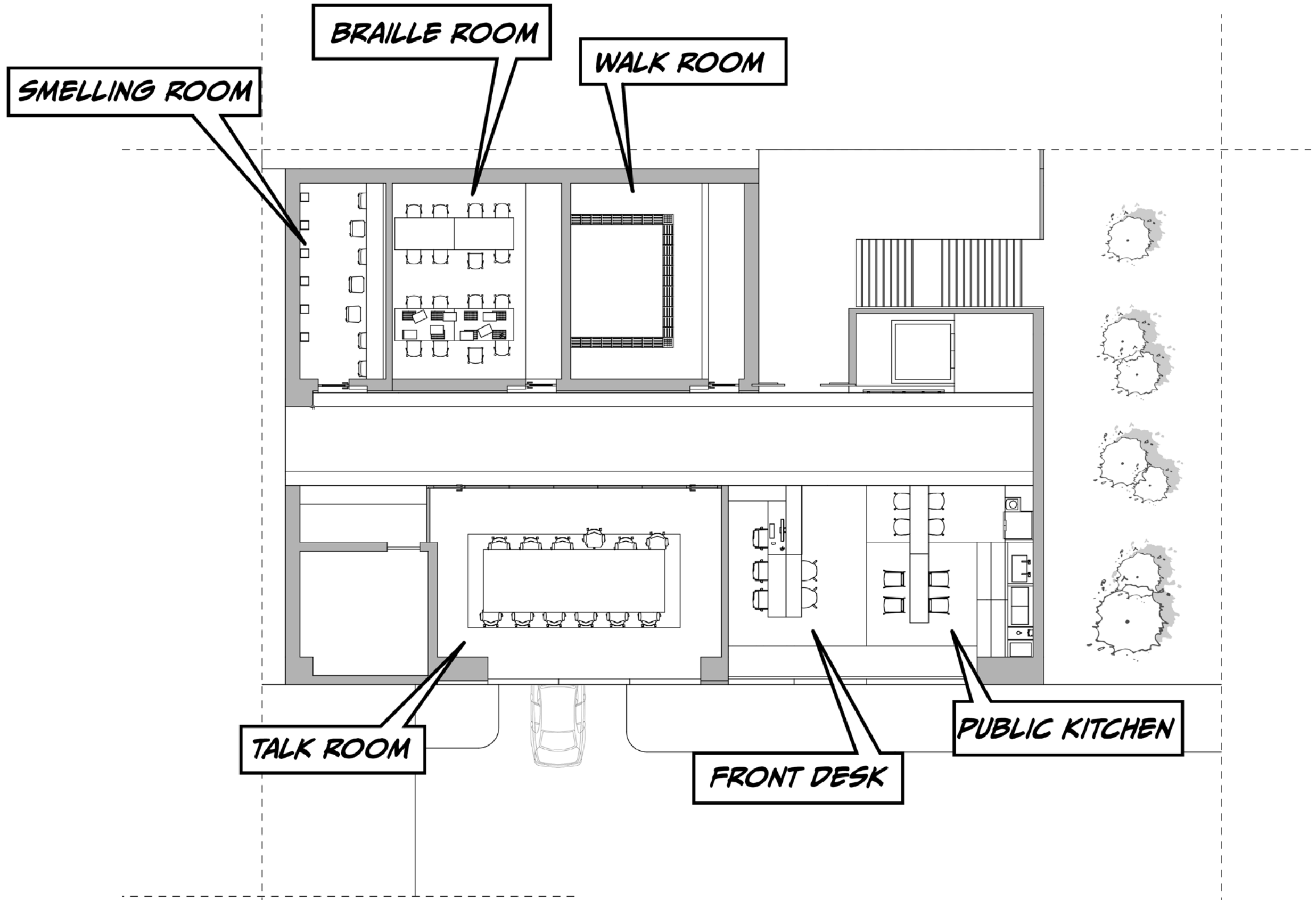


HELLOOO??

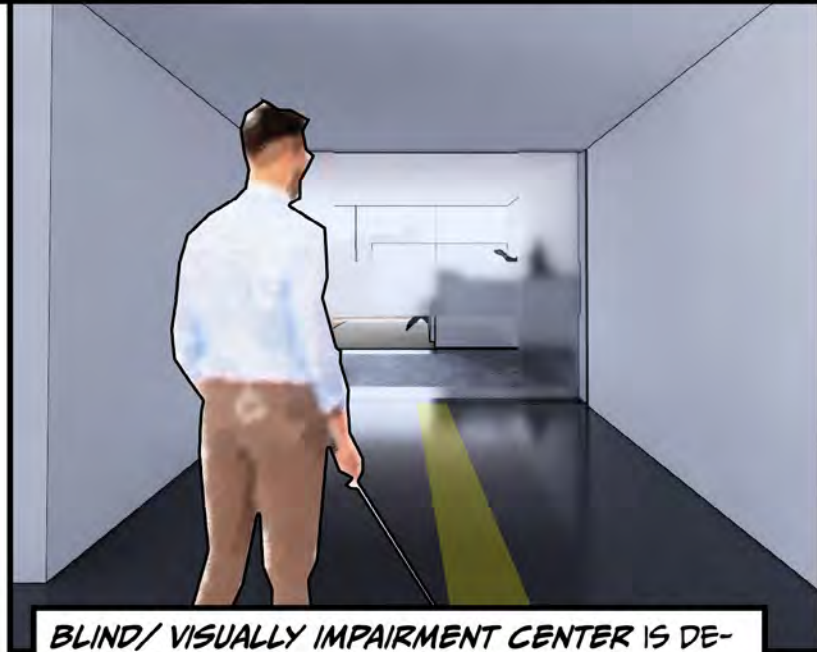




2ND FLOOR PLAN



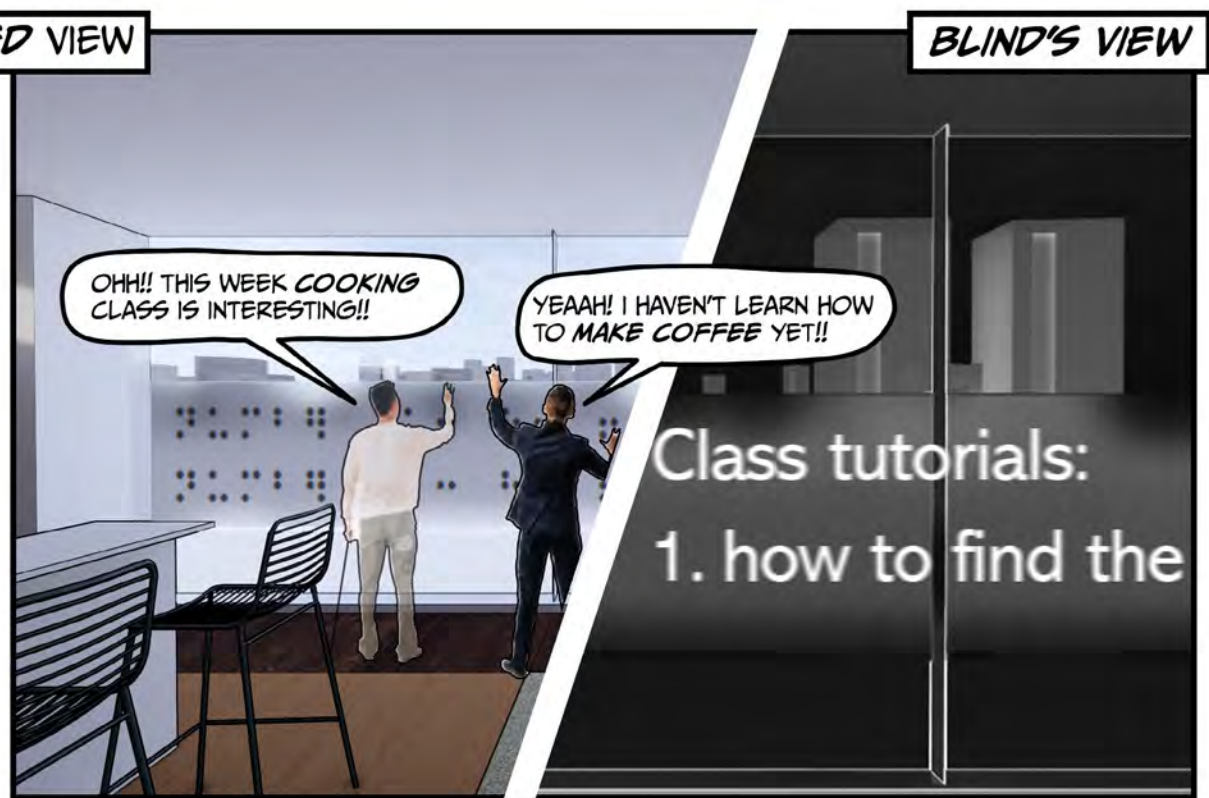
BLIND/VI CENTER



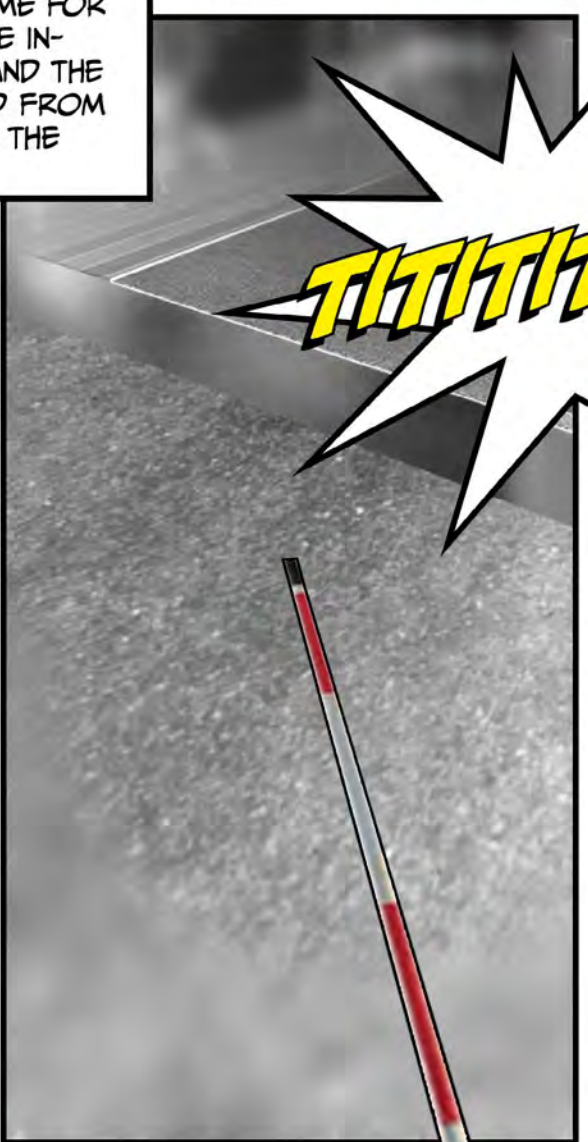
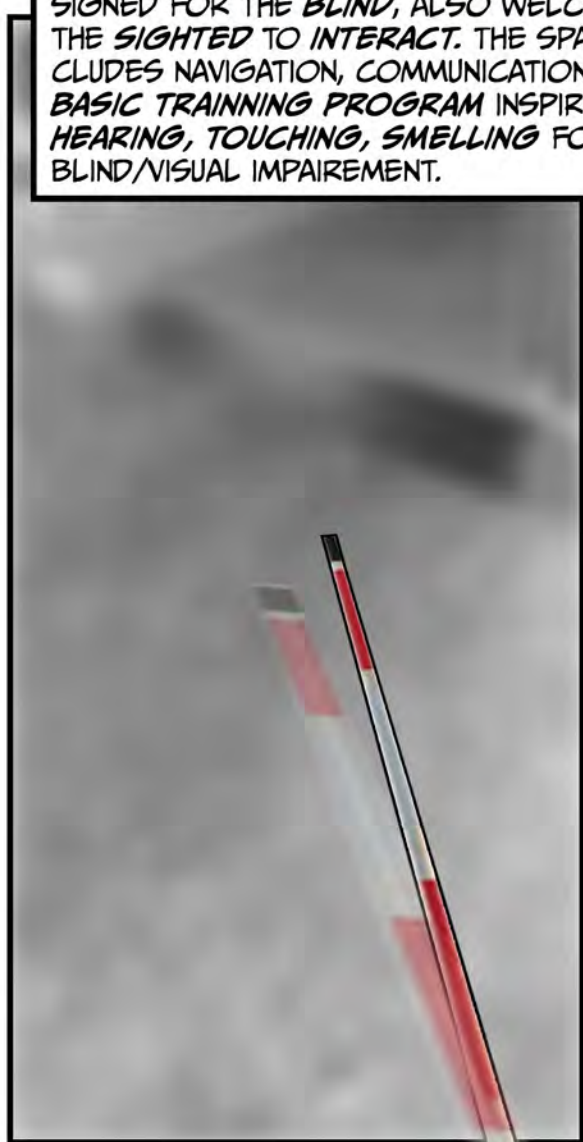
BLIND/ VISUALLY IMPAIRMENT CENTER IS DESIGNED FOR THE BLIND, ALSO WELCOME FOR THE SIGHTED TO INTERACT. THE SPACE INCLUDES NAVIGATION, COMMUNICATION AND THE BASIC TRAINING PROGRAM INSPIRED FROM HEARING, TOUCHING, SMELLING FOR THE BLIND/VISUAL IMPAIRMENT.



SIGHTED VIEW



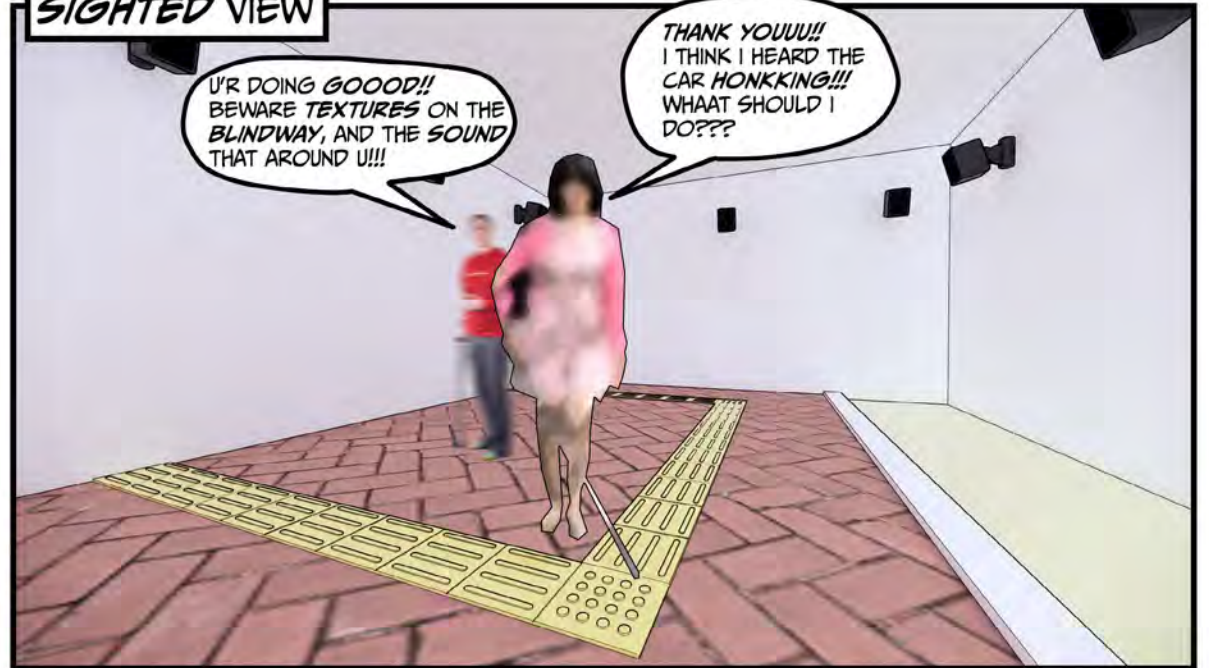
BLIND'S VIEW



WALK ROOM



SIGHTED VIEW



WALK ROOM SIMULATE VARIETY OF TRAFFIC SCENARIOS BY SOUND. THE PROGRAM GIVE MORE CONFIDENCE FOR THE BLIND TO BE READY FOR WALK OUTSIDE, ALSO GETTING TO KNOW HOW TO FACE DIFFERENT TYPES OF SETTING IN THE PUBLIC BY THEMSELF.

BLIND'S VIEW



BONGBONGGG!!

**BEEEE!!
BEEEE!!!**

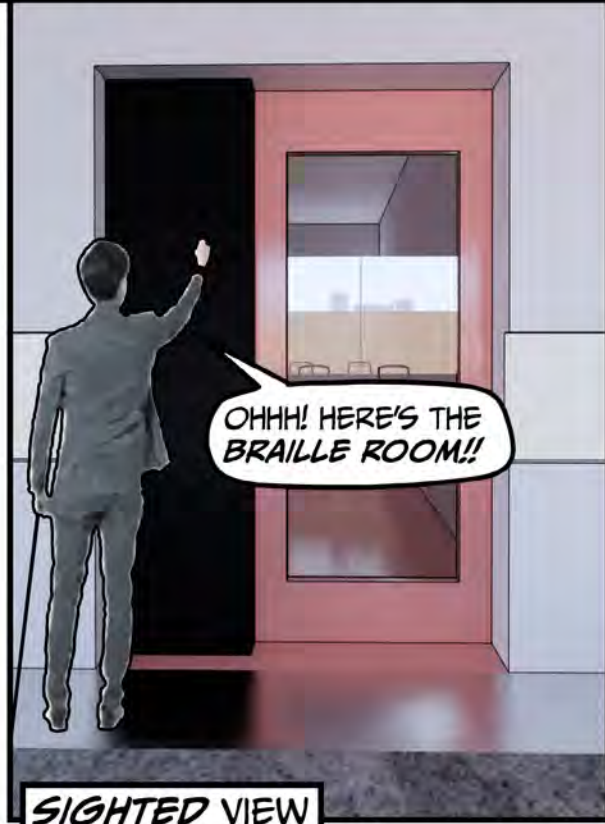
BLABLABLA

DONT BE AFRAID!!!

HEYYYYY!!!!

DIDIDI!!!

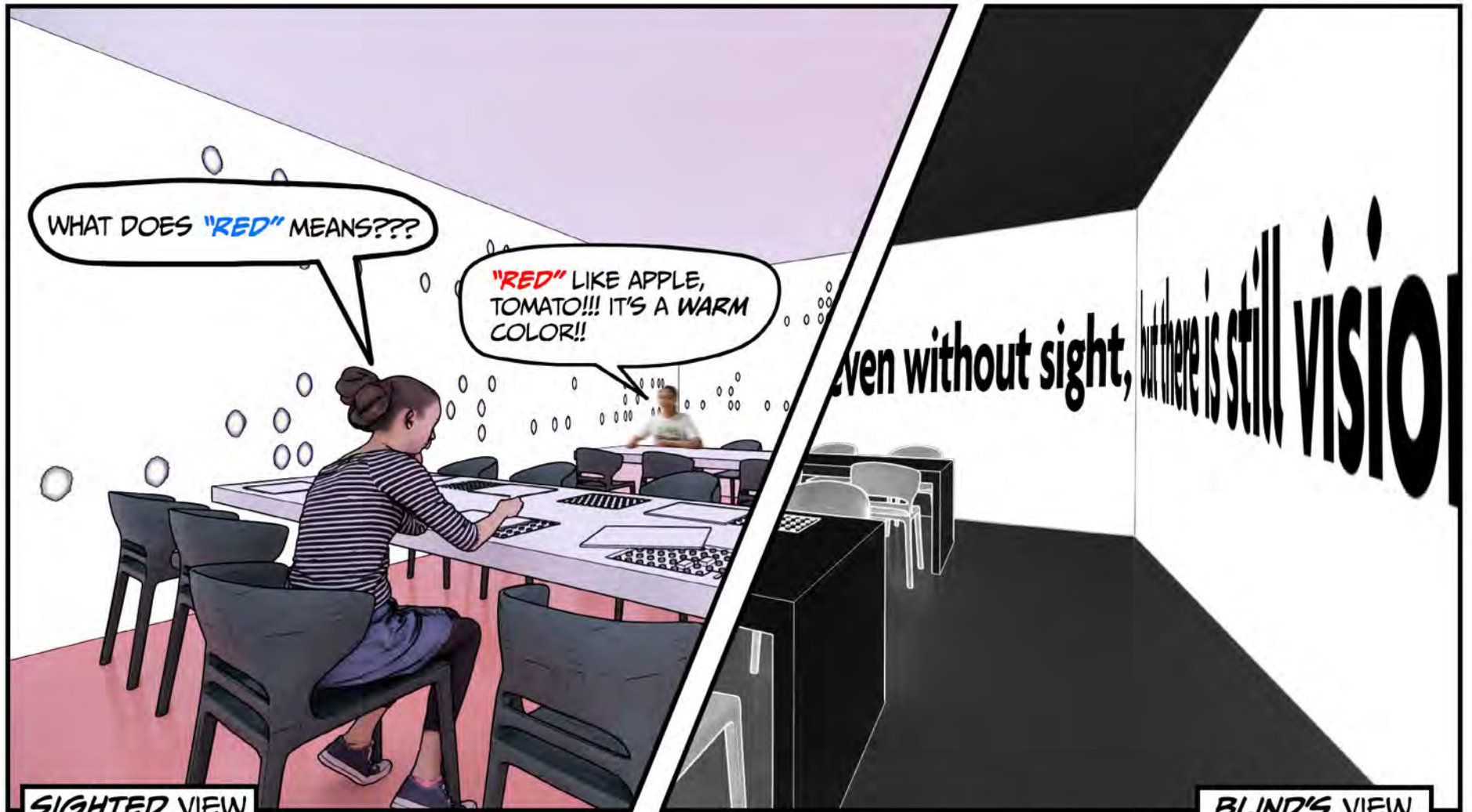
BRAILLE ROOM



SIGHTED VIEW

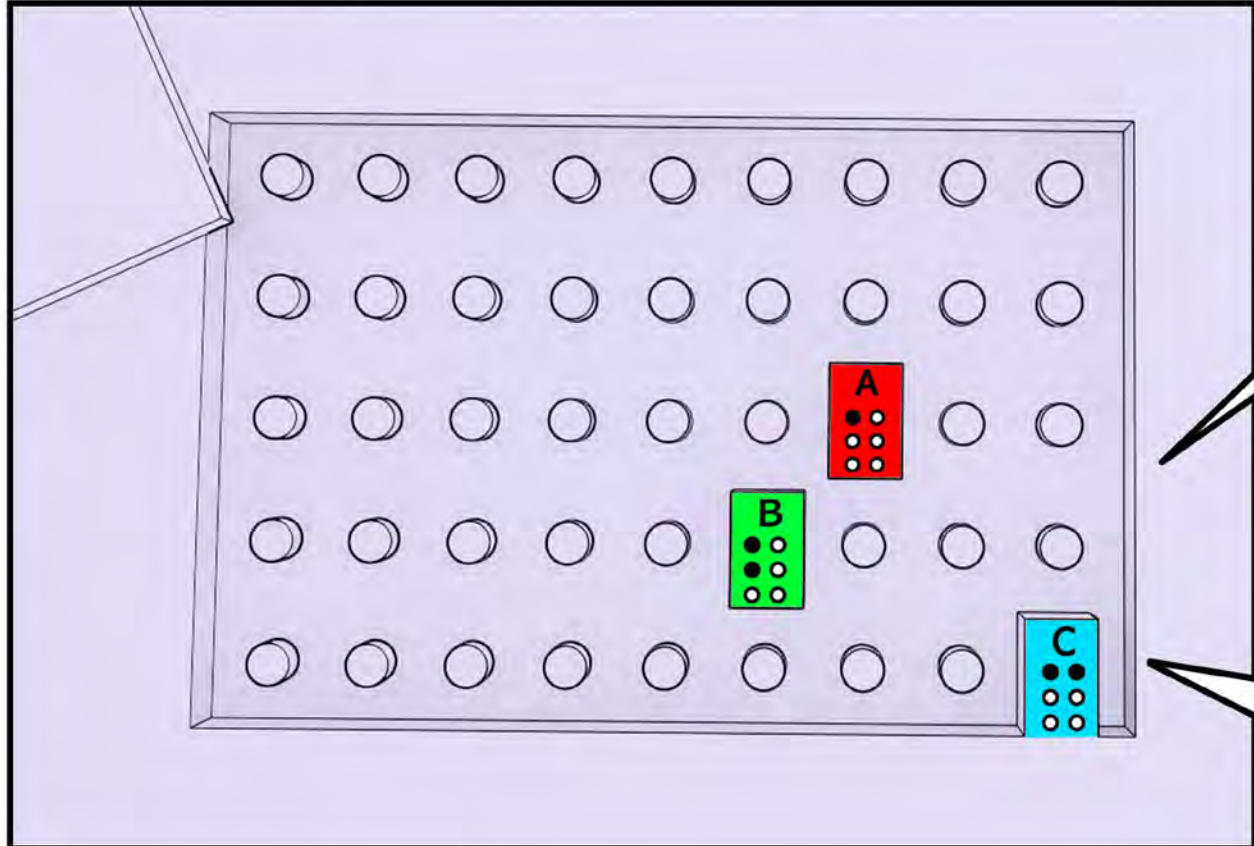
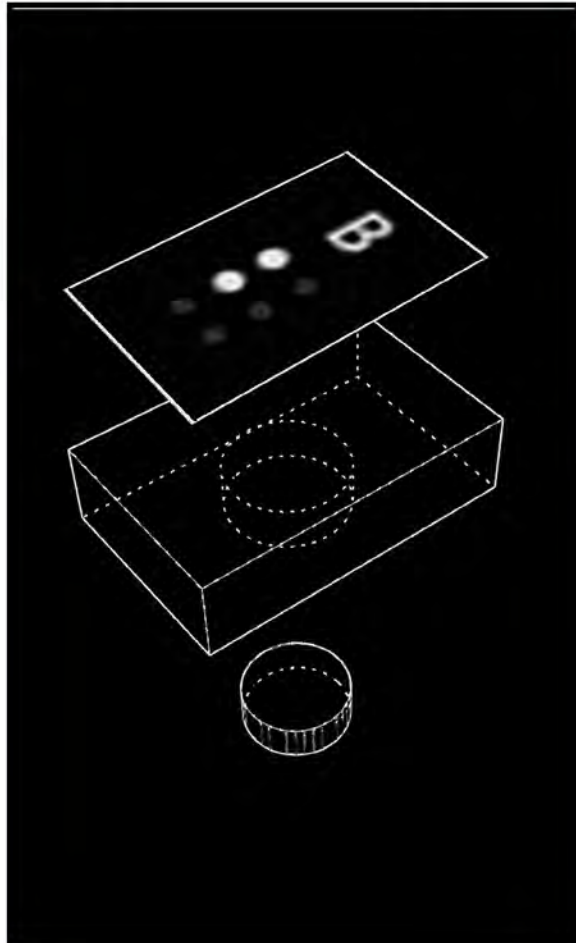
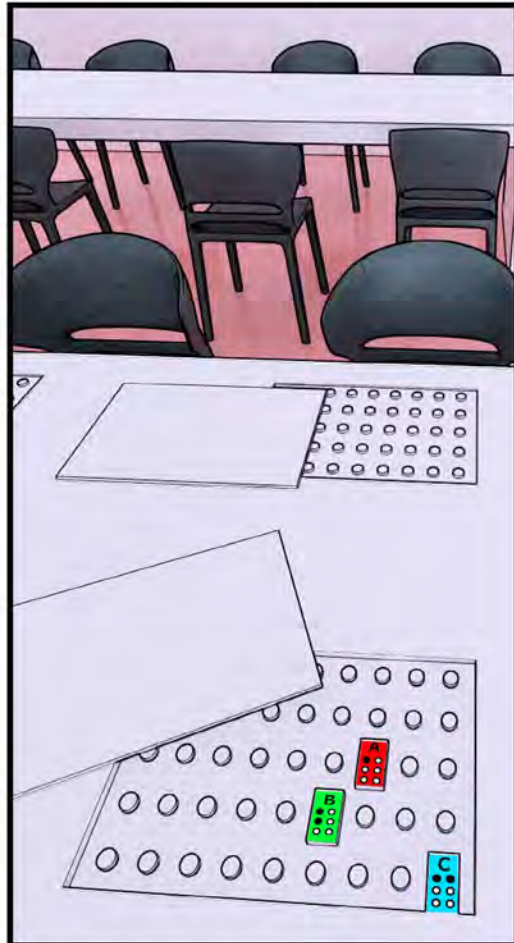


BLIND'S VIEW



SIGHTED VIEW

BLIND'S VIEW



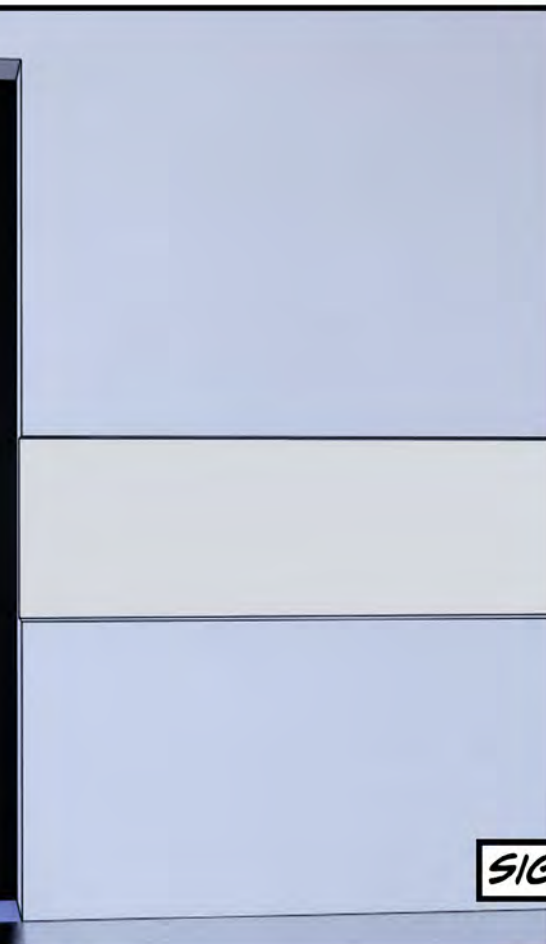
USING THE **BRAILLE** TABLE TO INSERT DIFFERENT **ALPHABET** TO GET TO KNOW EACH WORDS. ALSO EACH PIECES HAS **DIFFERENT COLORS**, IN ORDER TO **SHOW COLORS** FOR THE BLIND.

SIGHTED CAN ALSO COME IN TO LEARN **BRAILLE** WITH THE **BLIND/VISUAL IMPAIRMENT**. IN ORDER TO CREATE MORE **INTERACTION** BETWEEN THEM.

SMELL ROOM



SMELL ROOM PROVIDED DIFFERENT TYPES OF NATURAL SMELLS. ALLOWING THE BLIND/VISUAL IMPAIRED TO TRAVEL TO VARIETY SCENARIOS BY SMELLS.



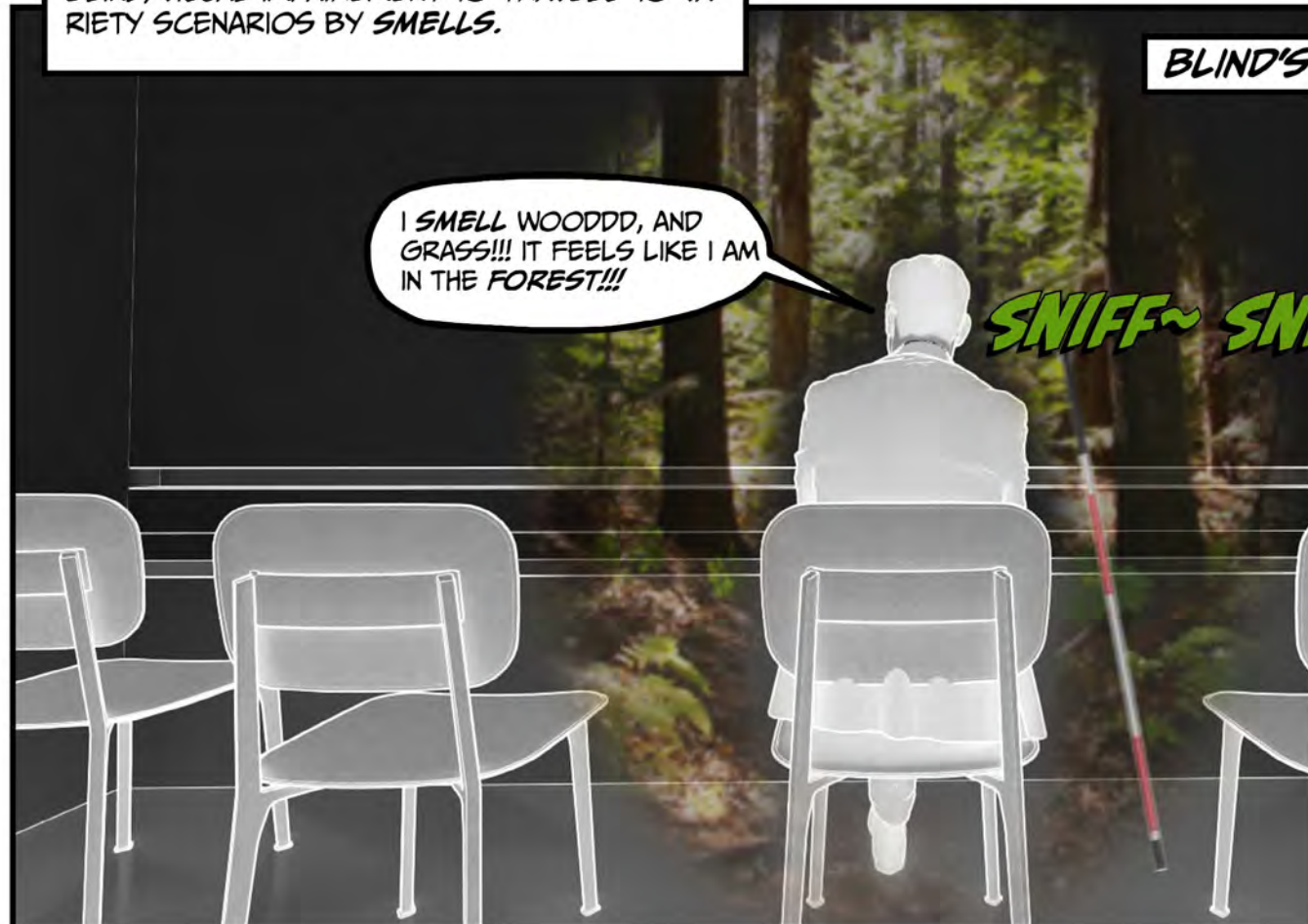
SIGHTED VIEW



DIFFERENT SMELLS WILL PROVIDED DIFFERENT COLORS.

SNIFF~ SNIFF~

BLIND'S VIEW



I SMELL WOODDD, AND GRASS!!! IT FEELS LIKE I AM IN THE FOREST!!!

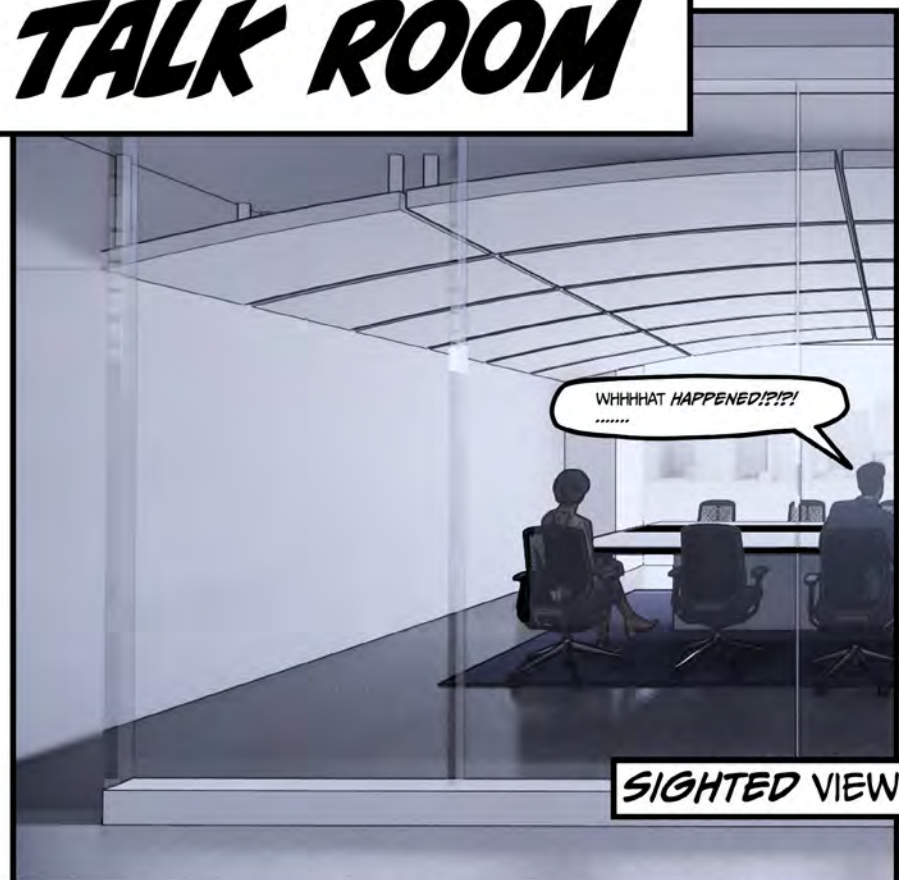
SNIFF~ SNIFF~



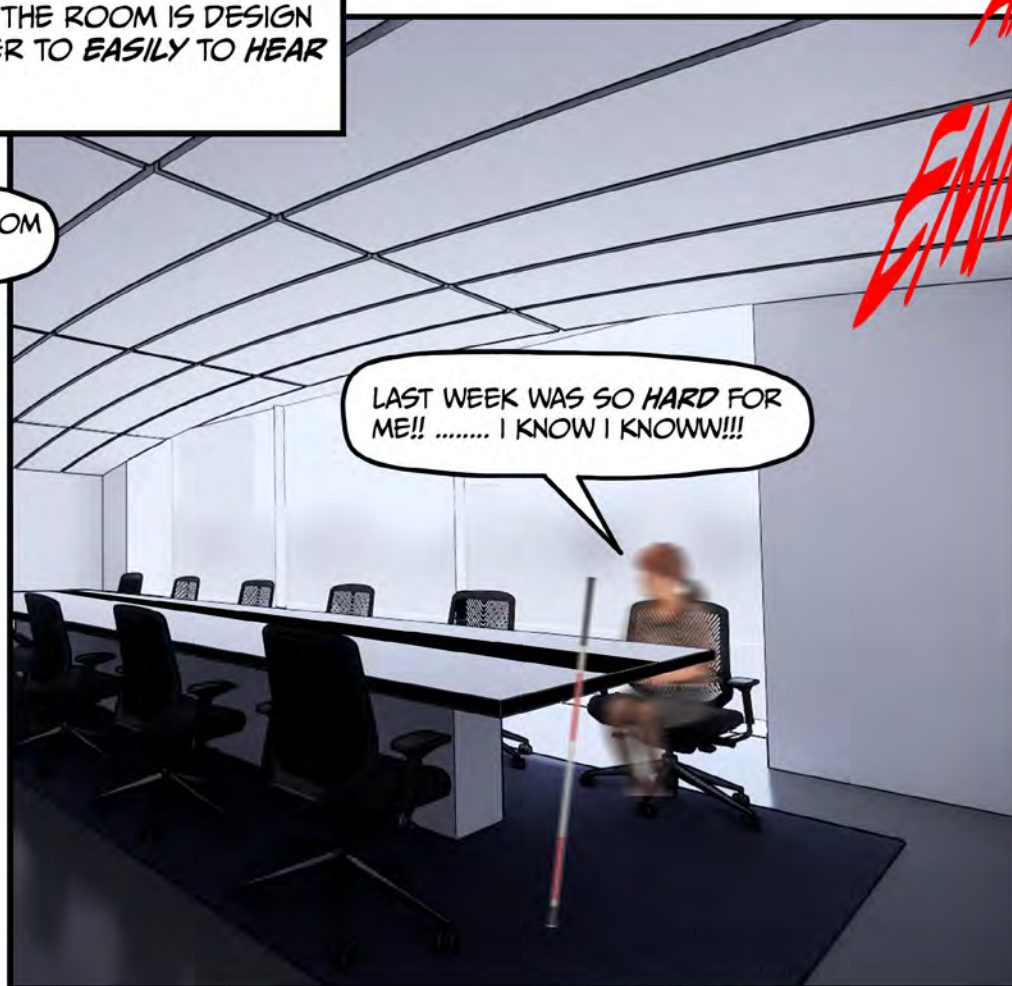
I SMELL SAND, AND FISH!!! I FEEL LIKE I AM ON THE BEACH!!!

SNIFF~ SNIFF~

TALK ROOM

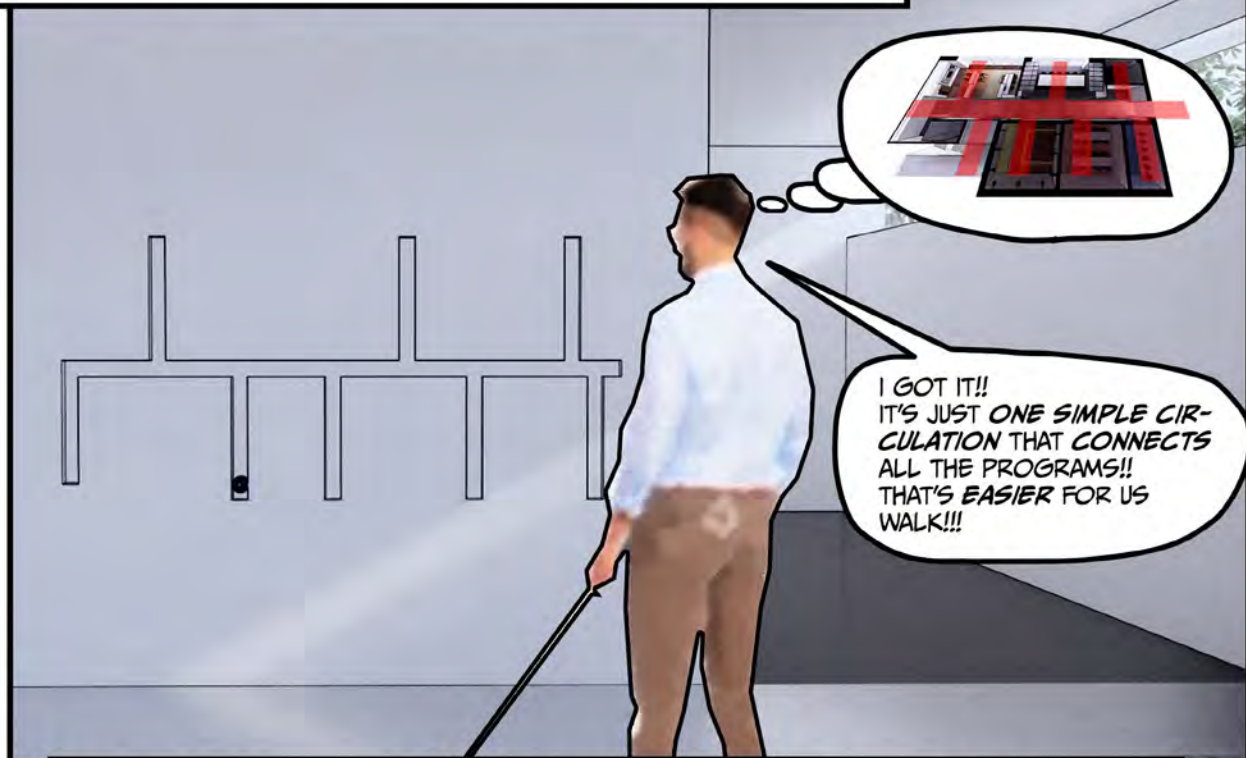


TALK ROOM PROVIDED A SPACE FOR BLIND/VISUAL IMAPIREMENT AND SIGHTED TO COMMUNICATE THEIR EXPERIENCES. THE ROOM IS DESIGN TO INCREASES THE SOUND FOR THE USER, INORDER TO EASILY TO HEAR OTHER'S TALKING.

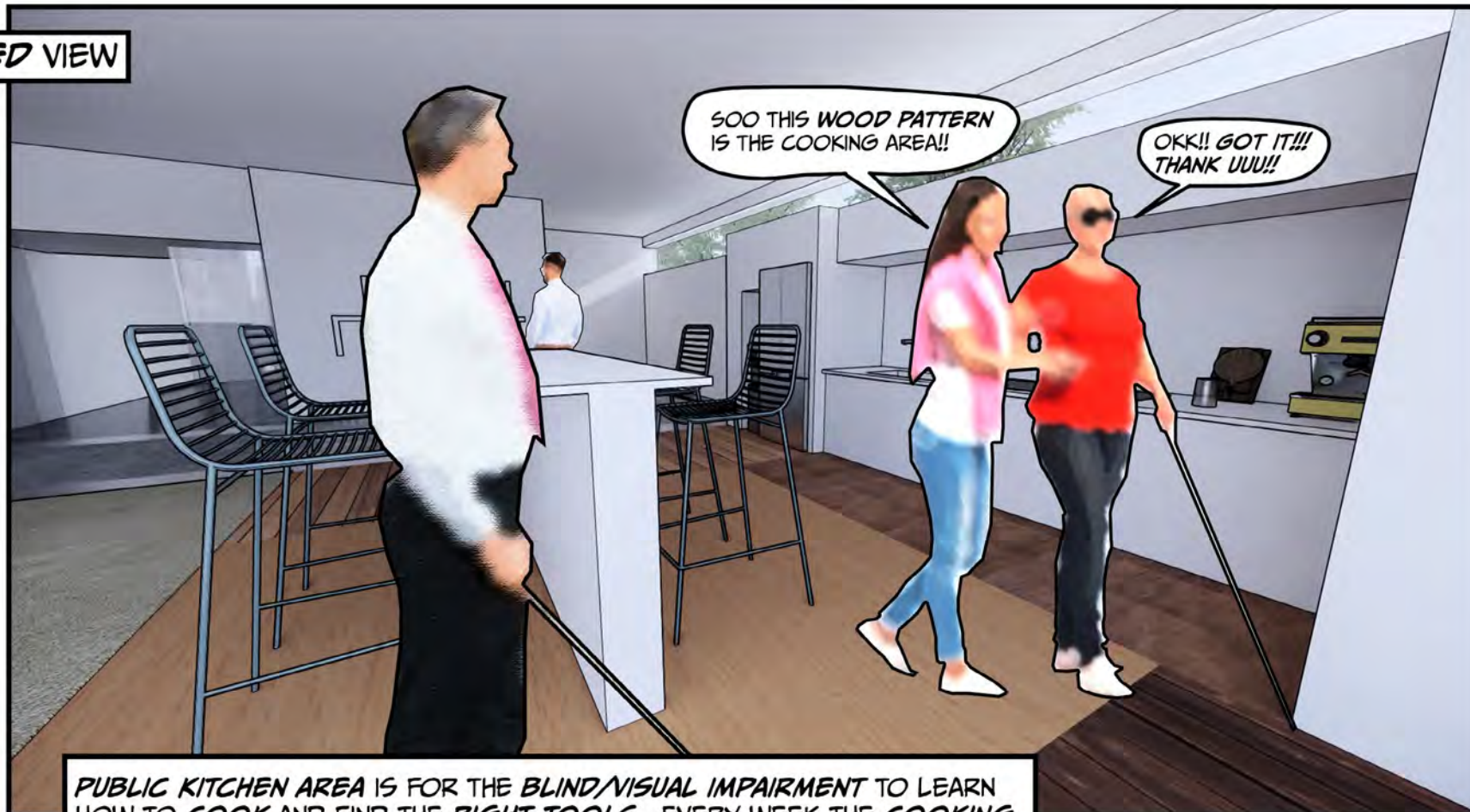


PUBLIC KITCHEN

SIGHTED VIEW

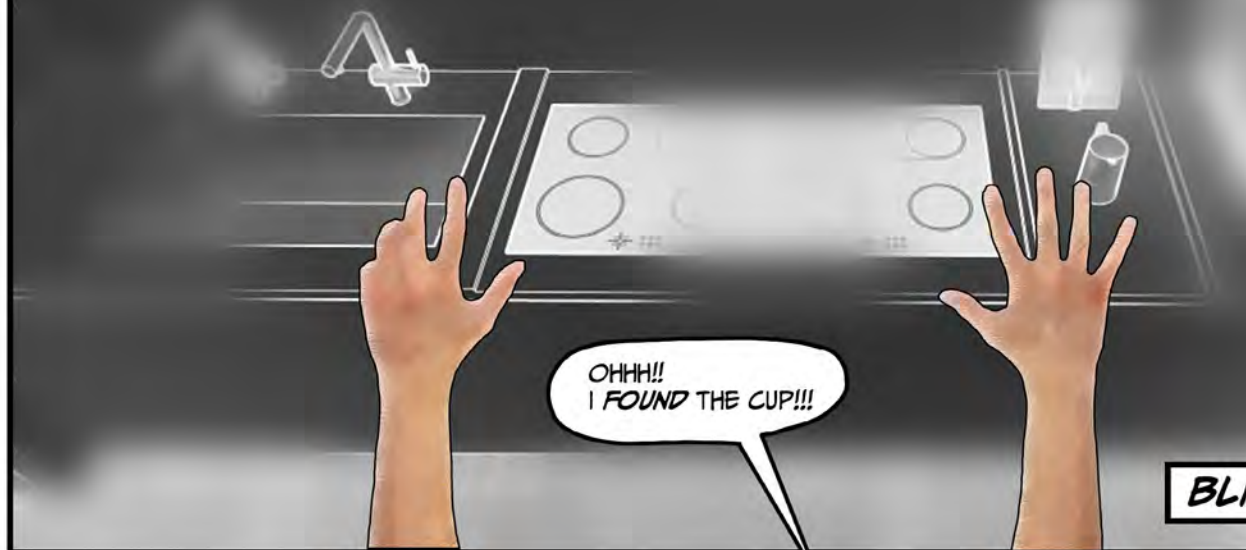


BESIDE THE ENTRANCE HAS THE CIRCULATION MAP ON THE WALL. BLIND/VISUAL IMPAIRMENTS CAN USE THE BALL TO UNDERSTAND THE CIRCULATION WHEN THEIR FIRST TIME TO COME IN.

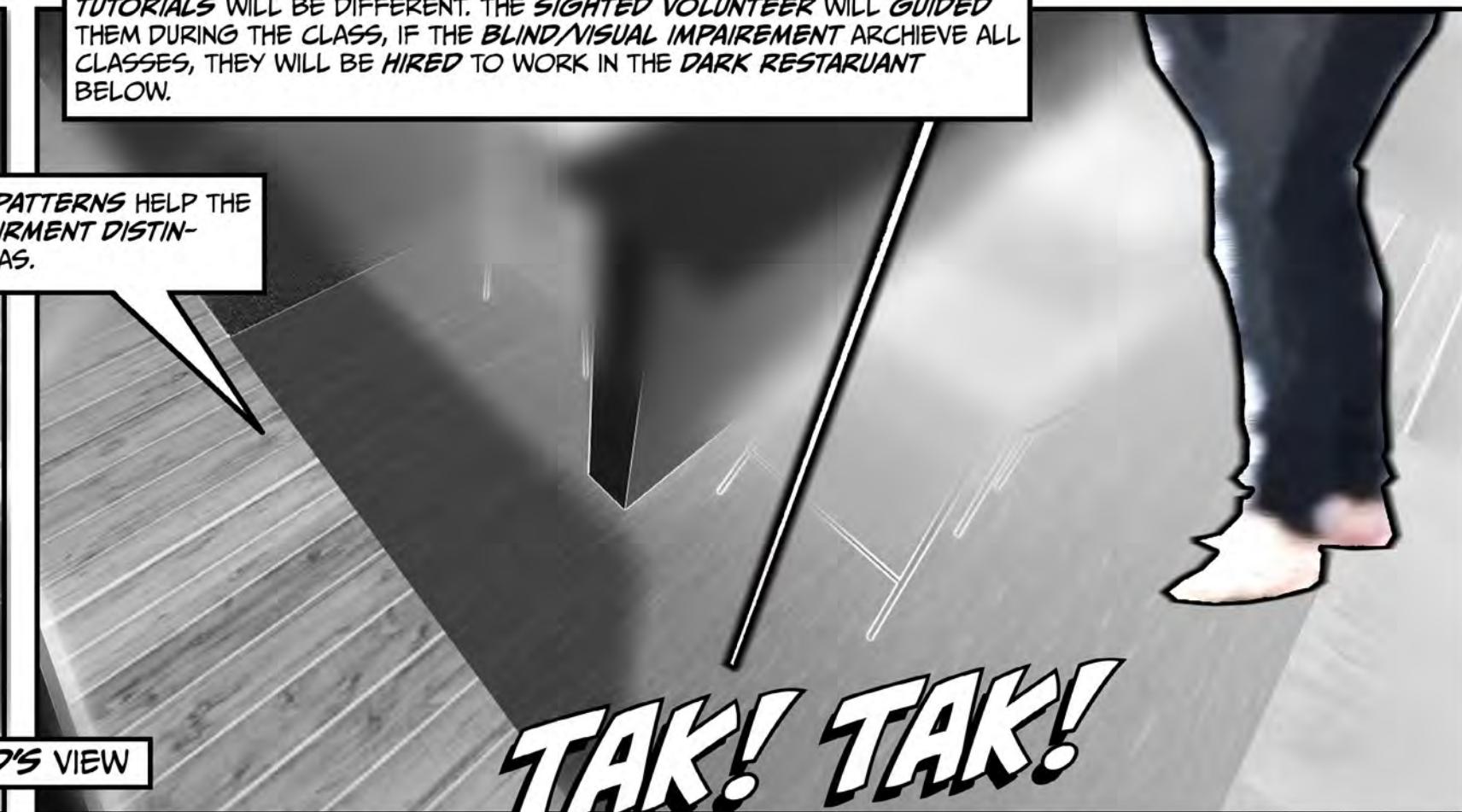


PUBLIC KITCHEN AREA IS FOR THE BLIND/VISUAL IMPAIRMENT TO LEARN HOW TO COOK AND FIND THE RIGHT TOOLS. EVERY WEEK THE COOKING TUTORIALS WILL BE DIFFERENT. THE SIGHTED VOLUNTEER WILL GUIDED THEM DURING THE CLASS, IF THE BLIND/VISUAL IMPAIRMENT ARCHIEVE ALL CLASSES, THEY WILL BE HIRED TO WORK IN THE DARK RESTARUANT BELOW.

DIFFERENT WOOD PATTERNS HELP THE BLIND/VISUAL IMPAIRMENT DISTINGUISHED EACH AREAS.



BLIND'S VIEW



TAK! TAK!