

Reframing the Chinese- American Aesthetic

Margot Lin

The Paper Placemat

CHINESE ZODIAC

The Chinese Zodiac consists of a 12-year cycle, each year of which is named after a different animal that imparts distinct characteristics to its year. Many Chinese believe that the year of a person's birth is the primary factor in determining that person's personality traits, physical and mental attributes and degree of success and happiness throughout his lifetime. To learn about your Animal Sign, find the year of your birth among the 12 signs running around the border.

DRAGON
1904-1916-1928-1940-1952-1964-1976-1988-2000-2012-2024-2036
You are eccentric and your life complex. You have a very passionate nature and abundant health. Many a Monkey or Rat fan is like you. Avoid the Dog.

SNAKE
1905-1917-1929-1941-1953-1965-1977-1989-2001-2013-2025-2037
Wise and intense with tendency towards physical beauty. Van and high tempered. The Bear is your enemy. The Cock or Ox are your best signs.

HORSE
1906-1918-1930-1942-1954-1966-1978-1990-2002-2014-2026-2038
Popular and attractive to the opposite sex. You are often ostentatious and impetuous. You need people. Many a Tiger or a Dog early but never a Rat.

SHEEP
1907-1919-1931-1943-1955-1967-1979-1991-2003-2015-2027-2039
Elegant and creative, you are timid and prefer anonymity. You are most compatible with Boars and Rabbits but never the Ox.

MONKEY
1908-1920-1932-1944-1956-1968-1980-1992-2004-2016-2028-2040
You are very intelligent and are able to influence people. An enthusiastic scholar, you are easily discouraged and confused. Avoid Tigers, Snakes or Dragons or a Rat.

COCK
1909-1921-1933-1945-1957-1969-1981-1993-2005-2017-2029-2041
A power in spirit, you are devoted to work and spend after knowledge. You are selfish and nervous. Rabbits are trouble. Snakes and Ox are foe.

DOG
1910-1922-1934-1946-1958-1970-1982-1994-2006-2018-2030-2042
Loyal and honest, you work well with others. Generous, yet stubborn and often selfish. Look to the Horse or Tiger. Watch out for Dragons.

BOAR
1911-1923-1935-1947-1959-1971-1983-1995-2007-2019-2031-2043
Noble and idealistic. Your friends will be lifelong, yet you are prone to marital strife. Avoid other Boars. Many a Rabbit or a Sheep.

RAT
1900-1912-1924-1936-1948-1960-1972-1984-1996-2008-2020-2032
You are ambitious, yet honest. Prone to spend freely. Snakes make loving friendships. Most compatible with Dragons and Monkeys. Least compatible with Horses.

DOG
1910-1922-1934-1946-1958-1970-1982-1994-2006-2018-2030-2042
Loyal and honest, you work well with others. Generous, yet stubborn and often selfish. Look to the Horse or Tiger. Watch out for Dragons.

BOAR
1911-1923-1935-1947-1959-1971-1983-1995-2007-2019-2031-2043
Noble and idealistic. Your friends will be lifelong, yet you are prone to marital strife. Avoid other Boars. Many a Rabbit or a Sheep.

RAT
1900-1912-1924-1936-1948-1960-1972-1984-1996-2008-2020-2032
You are ambitious, yet honest. Prone to spend freely. Snakes make loving friendships. Most compatible with Dragons and Monkeys. Least compatible with Horses.

OX
1901-1913-1925-1937-1949-1961-1973-1985-1997-2009-2021-2033
Wise, patient and stooping to others. You can be happy by yourself, yet make an outstanding partner. Many a Snake or Cock. The Sheep will bring trouble.

TIGER
1902-1914-1926-1938-1950-1962-1974-1986-1998-2010-2022-2034
Tiger people are aggressive, combative, courageous and sensitive. Look to the Horse and Dog to happiness. Beware of the Monkey.

RABBIT
1911-1923-1935-1947-1959-1971-1983-1995-1999-2011-2023
Luckiest of all signs, you are also talented and articulate. Affectionate, yet shy, you seek peace throughout your life. Many a Sheep or Bear. Your opposite is the Cock.

CHINESE ZODIAC

BOAR
1923 • 1935 • 1947 • 1959 • 1971 • 1983 • 1995 • 2007 • 2019
You are a splendid companion, an intellectual with a very strong need to set difficult goals and carry them out. You are sincere, tolerant, and honest but by expecting the same from others, you are incredibly naive. Your quest for material goods could be your downfall. The Boar would be best in the arts as an entertainer, or possibly a lawyer. Some Boars: Albert Schweitzer, Ernest Hemingway.

DOG
1922 • 1934 • 1946 • 1958 • 1970 • 1982 • 1994 • 2006 • 2018
The Dog will never let you down. Born under this sign, you are honest, and faithful to those you love. You are plagued with constant worry, a sharp tongue, and a tendency to be a fault finder, however. You would make an excellent businessman, activist, teacher, or secret agent. Some Dogs: Soetens, George Gershwin, Benjamin Franklin, Herbert Hoover, David Niven.

COCK
1921 • 1933 • 1945 • 1957 • 1969 • 1981 • 1993
The Cock is a hard worker; shrewd and definite in decision making, often speaking his mind. Because of this, you tend to seem boastful to others. You are a dreamer, flashy dresser, and extravagant to an extreme. Born under this sign you should be happy as a restaurant owner, publicist, soldier, or world traveler. Some Cocks: Rudyard Kipling, Caruso, Groucho Marx, Peter Dinklage.

MONKEY
1920 • 1932 • 1944 • 1956 • 1968 • 1980 • 1992 • 2004 • 2016
You are very intelligent and a very clever wit. Because of your extraordinary nature and magnetic personality, you are always well-liked. The Monkey must guard against being an opportunist and distrustful of other people. Your sign promises success in any field you try. Some Monkeys: Julius Caesar, da Vinci, Harry S. Truman, Elizabeth Taylor.

GOAT
1919 • 1931 • 1943 • 1955 • 1967 • 1979 • 1991 • 2003 • 2015
Except for the knack of always getting off on the wrong foot with people, the Goat can be a charming company. You are elegant and artistic but the first to complain about things. Put aside your pessimism and worry and try to be less dependent on material comforts. You would be best as an actor, gardener, or beachcomber. Some Goats: Michelangelo, Rudolph Valentino, Mark Twain, Orville Wright.

HORSE
1920 • 1932 • 1944 • 1956 • 1968 • 1980 • 1992 • 2004 • 2016
Your capacity for hard work is amazing. You are your own person - very independent. While intelligent and friendly, you have a strong streak of selfishness and sharp cutting and should guard against being egotistical. Your sign suggests success as an adventurer, scientist, poet, or politician. Some Horses: Rembrandt, Chopin, Davy Crockett, Teddy Roosevelt.

RAT
1924 • 1936 • 1948 • 1960 • 1972 • 1984 • 1996 • 2008
You are imaginative, charming, and truly generous to the person you love. However, you have a tendency to be quick tempered and overly critical. You are also inclined to be somewhat of an opportunist. Born under this sign, you should be happy in sales or as a writer, critic, or publicist. Some Rats: Shakespeare, Mozart, Churchill, Washington, Truman Copote.

OX
1925 • 1937 • 1949 • 1961 • 1973 • 1985 • 1997 • 2009
A born leader, you inspire confidence. You are conservative, methodical, and good with your hands. Guard against being chauvinistic and demanding your own way. The Ox would be successful as a skilled surgeon, general, or hair dresser. Some Oxen: Napoleon, Van Gogh, Walt Disney, Clark Gable, Richard Nixon.

TIGER
1926 • 1938 • 1950 • 1962 • 1974 • 1986 • 1998 • 2010
You are sensitive, emotional, and capable of great love. However, you have a tendency to get carried away and be stubborn. Your sign shows you would be excellent as a boss, explorer, race car driver, or outlaw. Some Tigers: Marco Polo, Mary Queen of Scots, Dwight D. Eisenhower, Marilyn Monroe.

RABBIT
1927 • 1939 • 1951 • 1963 • 1975 • 1987 • 1999 • 2011
You are the kind of person that people like to be around - affectionate, obliging, always pleasant. Being cautious and conservative, you are successful in business but would also make a good lawyer, diplomat, or actor. Some Rabbits: Rudolph Nureyev, Confucius, Orson Welles, Einstein.

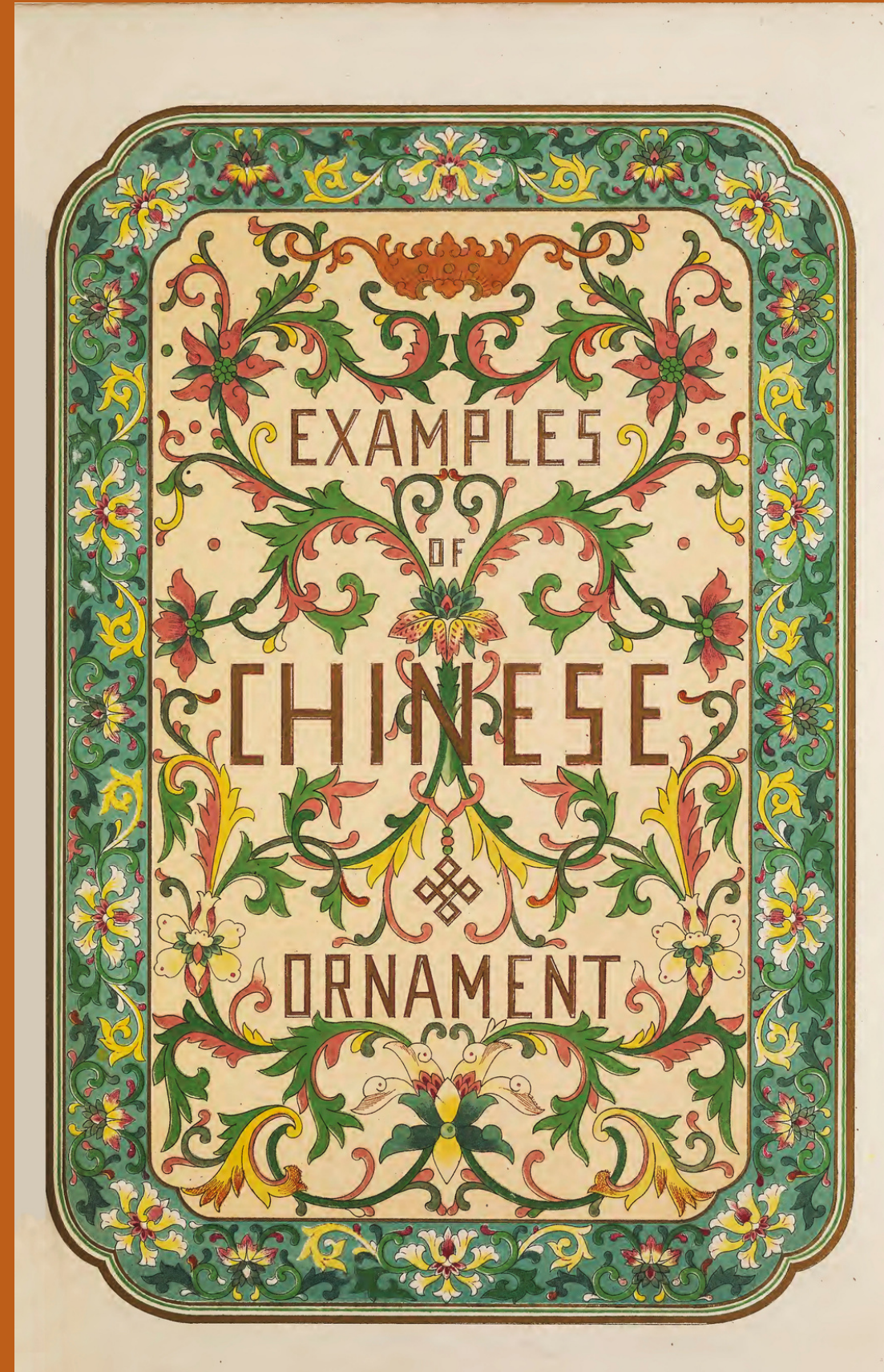
DRAGON
1928 • 1940 • 1952 • 1964 • 1976 • 1988 • 2000 • 2012
Full of vitality and enthusiasm, the Dragon is a popular individual even with the reputation of being foolhardy and a "big mouth" at times. You are intelligent, gifted, and a perfectionist but these qualities make you unduly demanding on others. You would do well as an artist, priest, or politician. Some Dragons: Joan of Arc, Pearl Buck, Freud.

SNAKE
1929 • 1941 • 1953 • 1965 • 1977 • 1989 • 2001 • 2013
Rich in wisdom and charm, you are romantic and deep thinking and your intuition guides you strongly. Avoid procrastination and your stingy attitude towards money. Keep your sense of humor about life. The Snake would be most content as a teacher, philosopher, writer, psychiatrist, and fortune teller. Some Snakes: Darwin, Edgar Allen Poe, Lincoln.

CHINESE ZODIAC

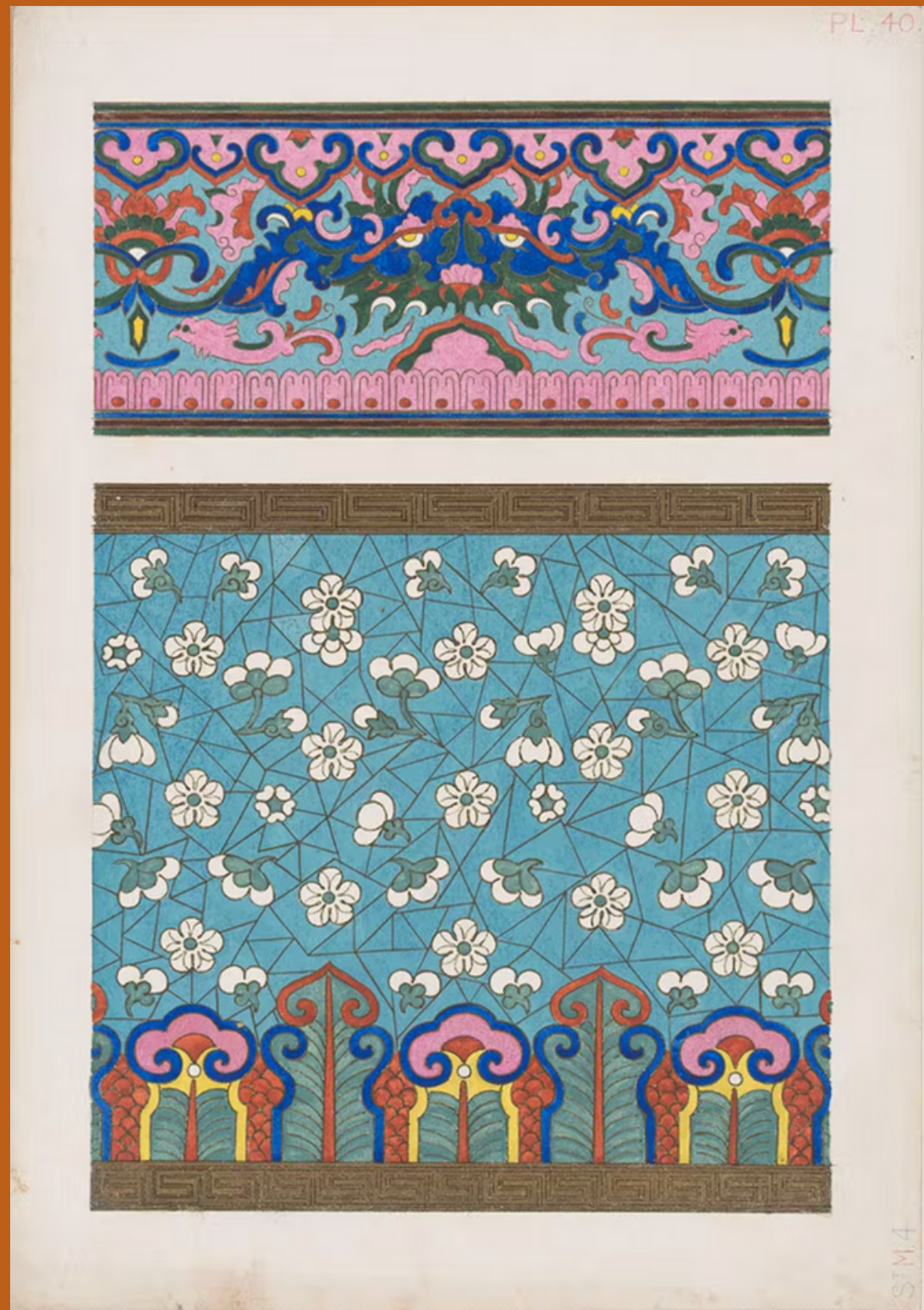
Charming, Witty, Gallant, Wise – Recognize Yourself!
Stingy, Selfish, Cunning (must be somebody else!)

The Chinese Zodiac is based on a twelve year cycle – each year is represented by an animal. Traditional Chinese beliefs are that a person's year of birth holds the key to their life-long character and well-being. Find the year you were born to determine your own sign.



Examples of Chinese Ornament

- By Owen Jones
- Published in 1867
- More of a design sourcebook, purely descriptive and lacked understanding of meaning behind motifs





How to Read Chinese Ceramics

- By Denise Leidy
- Published in 2015
- Drawing from collections at the Met
- Explains and interprets motifs



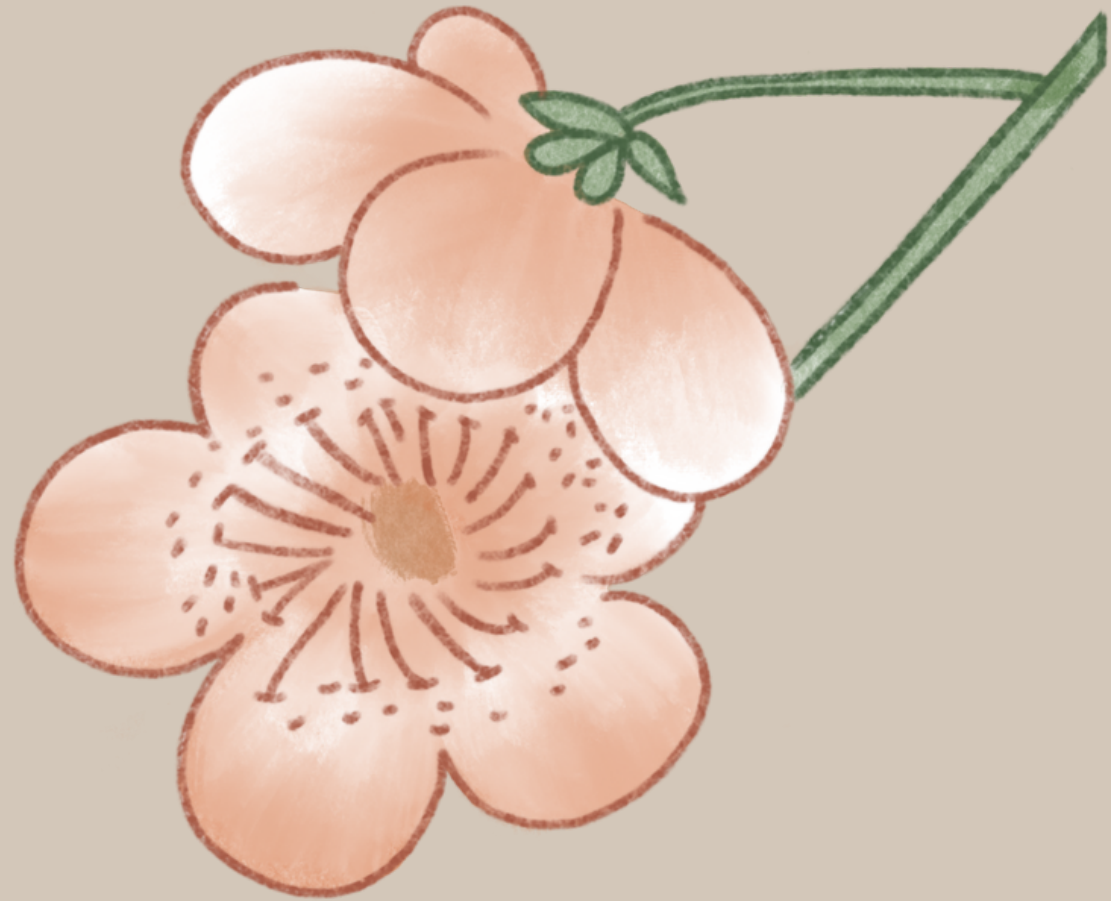






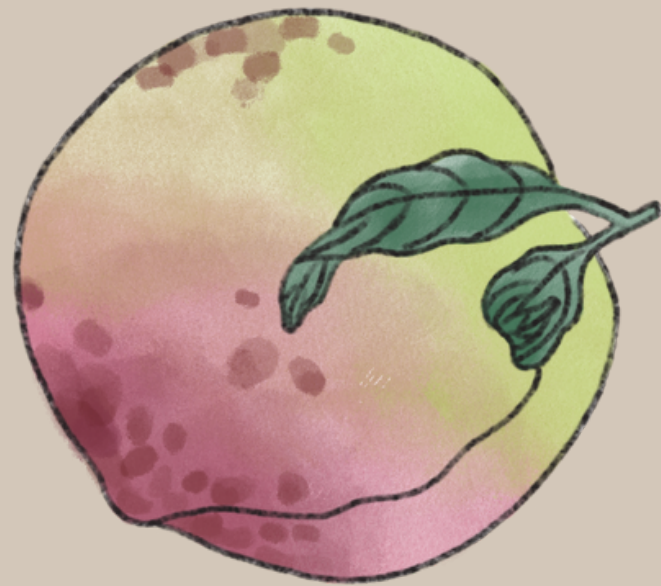






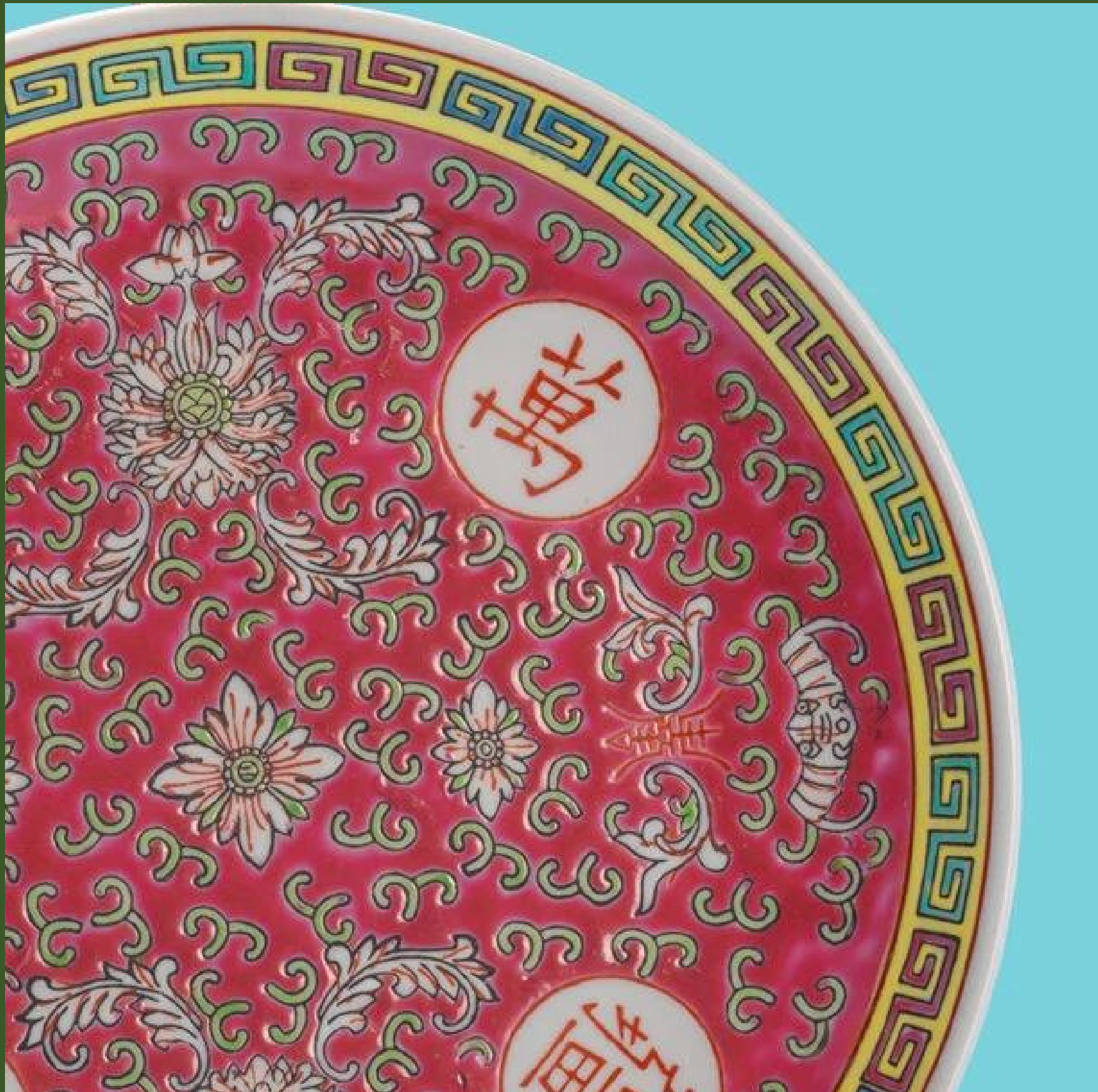




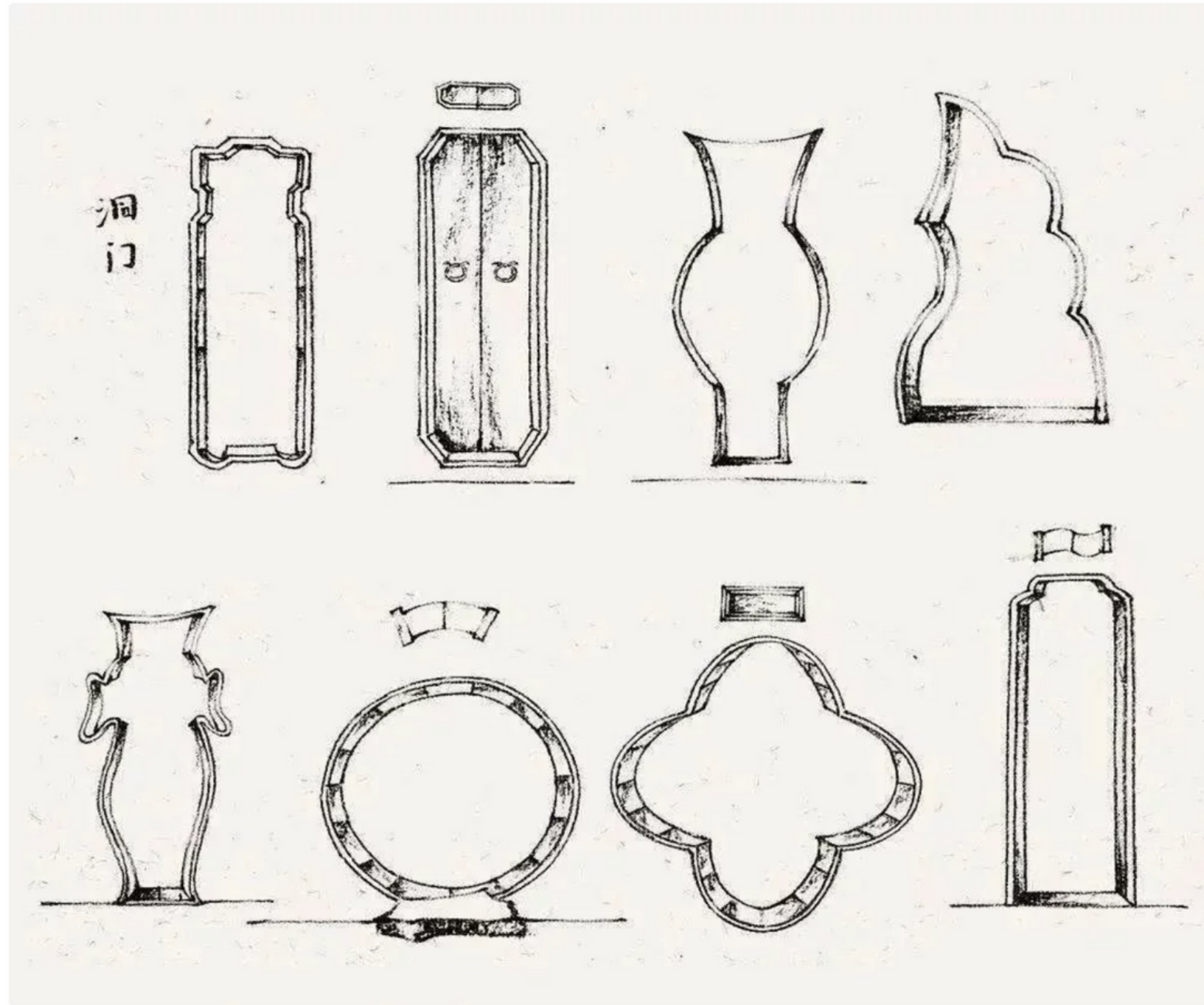








刘敦桢先生在《苏州古典园林》中对此有较为全面的概括:洞门的形式有圆、横长、直长、圭形、长六角、正八角、长八角、定胜、海棠、桃、葫芦、秋叶、汉瓶等多种,而每种又有不少变化,代表了天地自然符号、植物花卉和器物符号等。下面我们就来认识苏州园林中常见的几种洞门!



Hidden Symbolism in Chinese Decoration

LEIWEN 雷紋

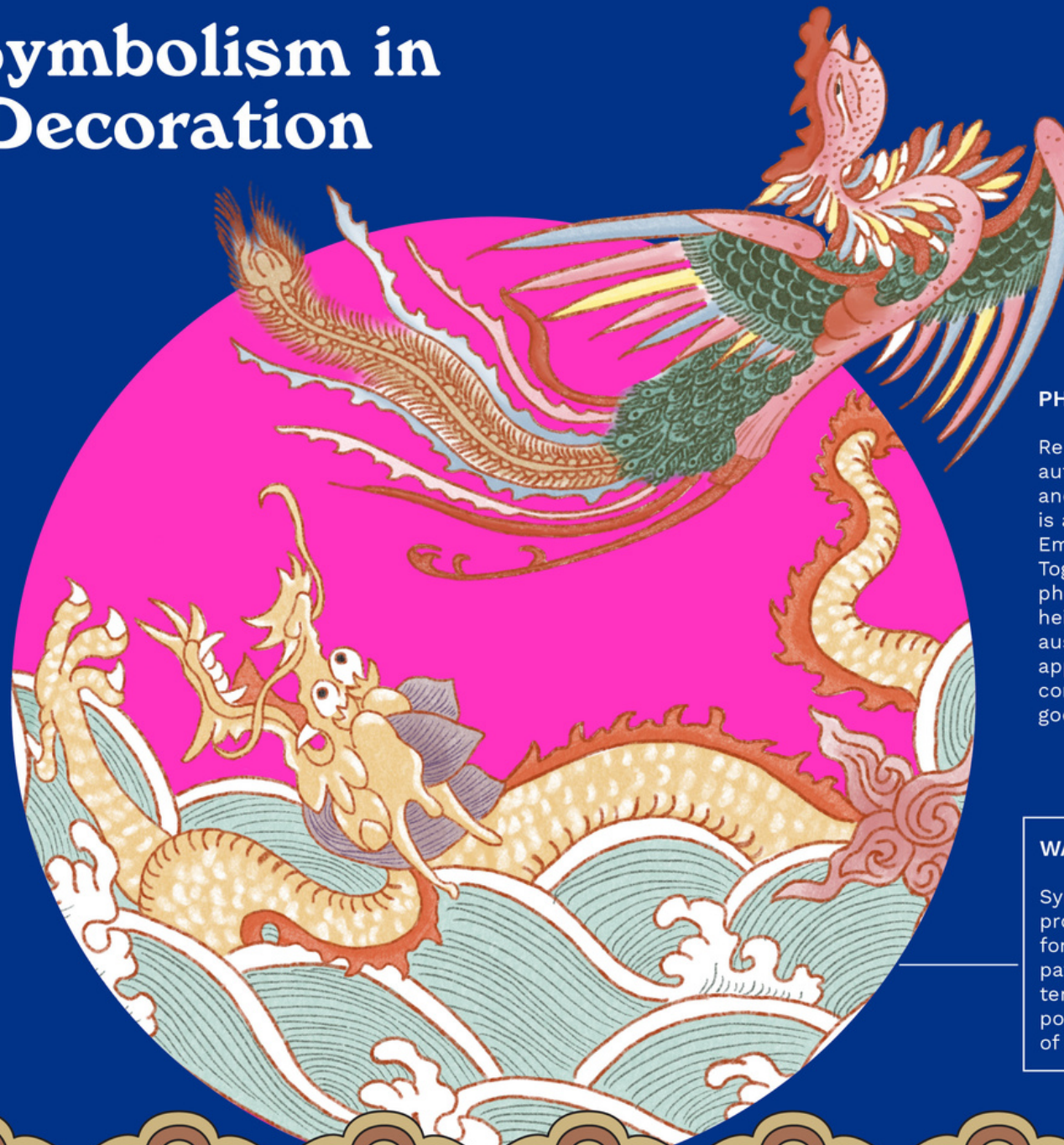
Also known as the thunder pattern, or the meander pattern in the West, the leiwen symbolizes life giving rain and abundance to farming people.

RUYI 如意紋

Meaning "as desired" or "as you wish," the ruyi is usually depicted with a long S-shaped handle and a head fashioned like a cloud or mushroom.

DRAGON 龍

Arguably the most well-known motif in Chinese art, the dragon symbolises the Emperor of China and is emblematic of male prowess, strength and divine rule. According to Chinese mythology, they rise up from the sea and create storm clouds that bring fertility to the land.



PHOENIX 鳳

Representing female authority, benevolence and beauty, the phoenix is associated with the Empress of China. Together, the dragon and phoenix represent the height of power and auspiciousness, often appearing at weddings to convey blessings and good fortune.

WATER PATTERN 水紋

Symbolizing eternity, prosperity, and good fortune, the water pattern is an umbrella term for motifs that portray different states of the sea.

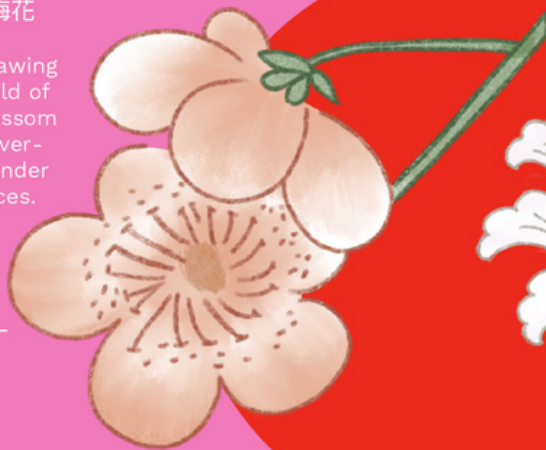
Hidden Symbolism in Chinese Decoration

LEIWEN 雷纹

Also known as the thunder pattern, or the meander pattern in the West, the leiwen symbolizes life giving rain and abundance to farming people.

PLUM BLOSSOM 梅花

Representing the thawing of winter and a herald of spring, the plum blossom is a symbol of perseverance and strength under adverse circumstances.



PEACH 桃子

Emblematic of longevity and health, peaches are a common symbol in Chinese art. In mythology, they're consumed by the immortals due to their mystic virtue of conferring eternal life on all who eat them.



PEONY 牡丹

Considered the "king of flowers," peonies are known to represent prosperity, happiness, and honor. Traditionally a token of love, they were exchanged as a farewell gift.



RUYI 如意纹

Meaning "as desired" or "as you wish," the ruyi is usually depicted with a long S-shaped handle and a head fashioned like a cloud or mushroom.

CHRYSANTHEMUM 菊花

A homophone for a character that means "long time," the chrysanthemum is associated with longevity and vitality. In ancient China, people drank chrysanthemum wine on the ninth day of the ninth lunar month as it was believed to prolong their lives.



LOTUS 莲花

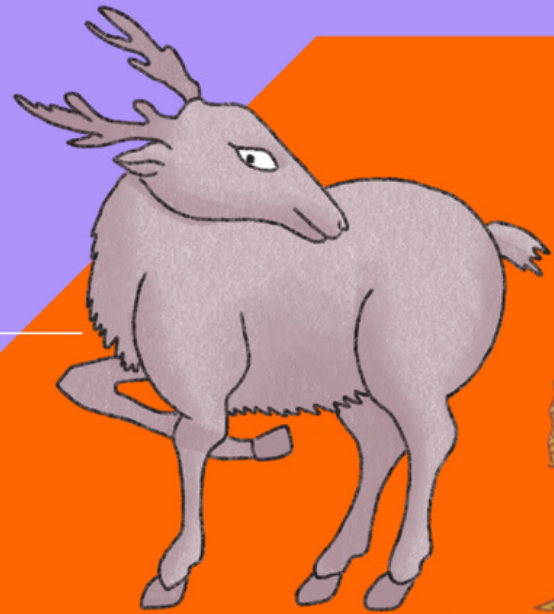
The lotus flower grows from the mud but remains unstained and pure. Because of this, it has come to symbolize rising from the dark into beauty and rebirth.



Hidden Symbolism in Chinese Decoration

DEER 鹿

A homophone for "lu," a character that means "good income," the deer is a symbol of good luck and prosperity. Because it's the only animal that can find the fungus of immortality in Chinese mythology, it's also an emblem of long life.



LEIWEN 雷紋

Also known as the thunder pattern, or the meander pattern in the West, the leiwen symbolizes life giving rain and abundance to farming people.

ROOSTER 公雞

Representing fidelity and punctuality, the rooster is an auspicious symbol of good luck and protection. Because the character for roosters' crowns, "guan," is homophonous to the word for "officials," it's also associated with wealth and power.

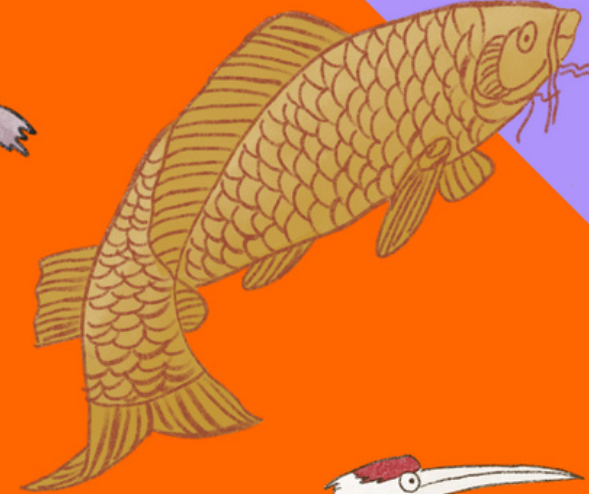


RUYI 如意紋

Meaning "as desired" or "as you wish," the ruyi is usually depicted with a long S-shaped handle and a head fashioned like a cloud or mushroom.

CARP 鯉魚

In Chinese folklore, carp that manage to leap over the Yellow River are believed to turn into dragons. It has thus become a symbol of success, strength, perseverance, and wealth.



CRANE 鶴

Also known as the "bird of the immortals," the crane embodies longevity and peace. It also represents long-lasting love and loyalty in marriage, as the bird is monogamous and stays with one partner until death.

